



Rock County STAR HERALD

Rock County's oldest business, printing since 1873

Thursday, December 8, 2022

Rural voters may return to live polls

Fraud allegations, staff harassment prompt discussion about mail ballots

By Mavis Fodness

Due to the poor treatment of her staff leading up to this year's Nov. 8 general election, Rock County Auditor Ashley Kurtz is asking mail ballot precincts to return to in-person voting.

For months, Kurtz's office fielded anonymous calls, and on Friday, Dec. 2, she addressed township supervisors at their annual association meeting.

"My staff was in tears about the way they were treated," Kurtz said. "We have to do something. I don't know what the answer is. We can at least start the conversation."

Township supervisors in attendance agreed to set up times for Kurtz to meet with them individually and discuss the various voting options.

Callers to the auditor's office who claimed the county's voting system, especially the use of mail ballots, was fraudulent were often unpleasant.

"I am just here to start the discussion about 'Do we want to stay with mail ballots' or 'Do we want to look at going back to polling places?'" Kurtz asked.

Of Rock County's 24 voting precincts, 18 townships currently use the mail ballot process in which registered voters automatically have a ballot sent to their homes through the mail. The registered voter fills out the ballot at home following enclosed instructions. Once sealed, the ballot is mailed back to the auditor's office to arrive on or before Election Day.

As an option, voters in a mail ballot precinct can still vote in person at the Rock County Courthouse on Election Day.

Kurtz said more than 200 voters from mail ballot precincts voted in person at the most recent election on Nov. 8.

"So I feel people are moving toward wanting to come to polling places. We have people who love mail ballots, too," she said.

"There is not a system that is going to keep everyone happy but at the same time we need to do something different than what happened.

"This (November) was my eighth election and by far the worst election answering questions and listening to their beliefs," Kurtz said.

While Kurtz didn't detail specific conversations, callers frequently didn't identify themselves and became belligerent when office staff explained the voting and canvassing processes.

Callers alleged that the mail ballot process is fraudulent with ballots mailed to deceased residents or to people not registered in the county.

"That's really not the case," Kurtz said. "We can explain our process from start to finish, but they still walk away."

Canvassing of the Nov. 8 elec-

Ballot discussion/see page 3A



Jim Juhl Myhre Studio photo/1208 santa and larsens

Bryce Niessink and Janice Fick played the roles of Santa and Mrs. Claus for photo sessions with Myhre Studio during Winterfest activities at the Luverne Elementary School Saturday. They're pictured here with the Larsen children (from left) Maddox, Lucy, Willow, Harper and Ella.

Santa visits, Flannel Fest, nativities and nutcrackers headline 2022 Winterfest

By Lori Sorenson

Luverne's Winterfest celebration over the weekend featured all the classic holiday activities, plus several new ones.

The Friday morning Puppet Show Story Hour at the Rock County Library started the weekend Friday morning. (page 14)

The Historic Hinkly House was open to the public Friday and Saturday (see page 5), and the congregation of St. John Lutheran Church featured more than 285 nativity sets in the second year of its Festival of Nativities (page 5.)

Winterfest/See page 5A



Erna Jessen's nativity set was among more than 285 on display at the St. John Lutheran Church's Festival of Nativities over the Winterfest weekend. Her name card explains that it took two years of weekly sessions to complete the set, with each piece requiring four coats of paint. "I was told the gold was special; you couldn't get that paint anymore at that time." (Heather Johnson photo)

Cleveringa Construction to change hands Jan. 1

Merlin Cleveringa to semi-retire, sell business to employees Uithoven and Sandbulte

"I can't say enough good about these two guys who are taking it over."

— Merlin Cleveringa about Adam Uithoven and Derek Sandbulte

By Lori Sorenson

A Dec. 1 ribbon-cutting celebrated new office space for Cleveringa Construction on South Highway 75 in Luverne, but the company families are celebrating a great deal more than that as the year comes to a close.

Merlin Cleveringa announced that he's semi-retiring in January and his two longtime employees, Adam Uithoven and Derek Sandbulte, are buying the business.

"I can't say enough good about these two guys that are taking it over," an emotional Cleveringa said Thursday. "It will be good."

Buying the business will be a natural transition for Uithoven who manages residential projects and Sandbulte who heads up ag



Lori Sorenson photo/1208 cleveringa changes hands

Merlin Cleveringa (center) is semi-retiring in January, and his two longtime employees, Adam Uithoven (left) and Derek Sandbulte, are buying the business effective Jan. 1, 2023. Cleveringa Construction is renting office space from Real Estate Retrievers in the remodeled Luverne Farm Store/True Value building on South Highway 75. The office façade is used to illustrate construction products and will be updated periodically as new products are introduced. The Cleveringa Construction business name will remain.

County grants 10-year tax abatement for New Vision warehouse

By Mavis Fodness

New Vision Co-Op intends to build a warehouse next spring in another expansion plan at its Magnolia feed mill.

Rock County commissioners agreed in a 4-1 vote to abate property taxes for new 62-by-352-foot warehouse during a Nov. 8 public hearing.

No one from the public commented at the hearing or in writing. The amount of abated taxes over the 10-year period will total \$83,841.

Commissioner Stan Williamson opposed the abatement, stating he preferred a five-year abatement, which would bring additional revenue into the county budget sooner.

The tax abatement program is an incentive for local businesses to expand in Rock County.

Business owners can apply to the program that provides 10 years of tax relief on the property's added value.

"It has done exactly what we hope these types of projects would do ... increase the tax base and increase the employment base," said County Administrator Kyle Oldre.

Williamson also opposed the abatement granted to New Vision earlier this year, also at the Magnolia location, for an additional storage facility and a new grain bin.

Under the warehouse agreement, \$11,977 is abated in years one through five. The amount is reduced annually by 20 percent each year until the ninth year when only \$2,396 is abated.

Tax abatement/See page 3A

construction work. Their two crews work together on projects when all hands are needed.

"I enjoy doing it, but it's definitely a challenging career, working in the elements," Uithoven said.

"But you can take a lot of pride in the work. At the end of the day, you're leaving something behind that someone raises their family in, and they find safety and shelter in and make memories of their own."

Sandbulte said he takes similar pride in ag construction.

"I grew up a farm kid. I have a love for farming, but I love this just as much, if not more," he said.

"It ties back to farming, back to commercial business. Hopefully we're making a product for another business or farm to make the money to raise their family and to continue in the business that they're doing."

Cleveringa said that Sandbulte understands the farming side of construction and what farmers need.

"I want to make the best product I possibly can for them," Sandbulte said.

All three started their con-

Cleveringa/continued on page 3A



COMMUNITY CALENDAR

Meetings

Vienna Township Board will meet at 7 p.m. Tuesday, Dec. 13, in the Kenneth Community Center.
Beaver Creek Township Board will meet at 7:30 p.m. Monday, Dec. 12, at the township hall.
American Legion Auxiliary #123 will meet at 10 a.m. Wednesday, Dec. 14, at Pizza Ranch. Members are asked to bring items for the Food Shelf. Call Dianna Tomlinson, 507-283-1934.

'Built like a Bison' at Blue Mounds Dec. 10

Bison have roamed the American West for thousands of years from numbers in the millions to just a few hundred, including today's herd at Blue Mounds State Park. Meet at the park picnic shelter from 11 a.m. to noon Saturday, Dec. 10, for "Built like a Bison," to learn what it takes for these creatures to thrive on the prairie. The program will conclude with an optional craft project to take home. Call 507-283-6057 with questions.

Donate blood Dec. 12 in Adrian

Sanford Health Adrian Clinic and Community Blood Bank will host a blood drive from 10:30 a.m. to 1:30 p.m. and from 3 to 5 p.m. Monday, Dec. 12, at the Adrian EMS Building. Donors can schedule through www.cbblifeblood.org under "events" or call 605-331-3222. Donors receive \$10 Subway gift cards.

Final New Life Celebration food distribution Dec. 15

New Life Celebration Church's final monthly food giveaway is at 4:30 p.m. Thursday, Dec. 15, at the Atlas building at 101 W. Maple Street in Luverne. Enter from Maple Street and stay along the west side of the building. Parking lot opens at 3 p.m. Do not block the Redeemed Remnants lot, intersection or alley.

Food will be loaded into vehicles, which exit via the alley going west. Call 507-283-8963 or 507-283-4366. Note: This is the final food distribution through New Life Celebration Church, which has offered the ministry since 2005.

Community Ed

Community Education will offer the following classes in the next few weeks. Call 507-283-4724 to register.

Students (grades 1-3) will follow along with the instructor step by step to create a painting at Paint & Snack class on Dec. 12. Fee is \$33.

Students (grades 4-6) will follow along with the instructor step by step to create a painting at Paint & Snack class on Dec. 19. Fee is \$33.

New Residents: Census Information Needed for Preschool Children. Call 507-283-4724 with information for children ages 0 to kindergarten. The school district uses the information for planning purposes, mailing out information on school events, including the state-mandated Preschool Screening for all 3-year-old children. If your child is 4 and has not been screened, call to complete the screening before kindergarten.

Library Happenings

For more information about library happenings, call 507-449-5040 or email rockcountystaff@gmail.com.

Trivia Night is at 7 p.m. the first Thursday of every month at Take 16 in Luverne. Team registration begins at 6 p.m.

Reminiscence Kits are available featuring various topics such as gardening, pets, baking, sewing, farming and hunting. The kits are designed to use with a loved one experiencing memory loss, encouraging the loved one to open up about activities they once loved in the past.



Lori Sorenson photo/1208 cleveringa ribbon cutting

Cleveringa Construction has new office space in the former Luverne Farm Store True Value building on South Highway 75 in Luverne. The staff and their families celebrated with a ribbon-cutting and open house Thursday, Dec. 1, along with Luverne Chamber Board members. Pictured are (front, from left) Austin Ossefoort, Harrison Uithoven, Adalyn Uithoven, Franklin Uithoven, Austin Sandbulte, Dennie Sandbulte, Ryan Voss, (second row) Shelly Nibbelink, Sam Honerman, Greg Uithoven, Adam Uithoven, Merlin and Carol Cleveringa, Angi and Derek Sandbulte, Mike DeBates, Cris Oeltjenbruns, Deb Aanenson, Jen Rolfs, Becky Walgrave, (back) Amber Lais, Nick Weidert, Rydell Uithoven, Ross Steensma, Linda Uithoven, Will and Barb Sandbulte, Cory Bloemendaal, Knute Oldre, Lois Leuthold, Rob Eisland, Steve Smedsrud and Bob Junak.

Real Estate Retrievers, Cleveringa Construction celebrate new office space on South Highway 75

By Lori Sorenson

Cleveringa Construction and Real Estate Retrievers celebrated the opening of the new office complex in the former Luverne Farm Store/True Value building on South Highway 75 in Luverne.

Cleveringa Construction did the remodeling work when Real Estate Retrievers bought the property and decided to lease the extra office space that was for rent on the south side.

"It's been a good move, because the street traffic has been good," Merlin Cleveringa said. (see the related story about his retirement and sale of the construction business.)

"The nice thing is Real Estate Retrievers does all our closings for us, so it kind of works back and forth both ways. It's a good mix."



Lori Sorenson photo/1208 real estate retrievers ribbon-cutting

Luverne Area Chamber Board members and the community celebrated the new office space of Real Estate Retrievers with a ribbon-cutting Thursday, Dec. 1, in the former Farm Store True Value building on South Highway 75. Pictured are (from left) Becky Walgrave, Cory Bloemendaal, Missy Aanenson, Jen Rolfs, Deb Aanenson, Sherri Thompson, Amber Lais, Shelly Nibbelink, Mike DeBates, (back) Bob Junak, Steve Smedsrud, Lois Leuthold, Keith Elbers, Cris Oeltjenbruns, Merlin Cleveringa and Knute Oldre.

WCCO to feature Luverne's 5,000 nutcrackers Dec. 14

WCCO reporters were in Luverne Tuesday afternoon to interview Betty Mann at the Rock County History Center.

They were interested in the fact that there are more

nutcrackers in Luverne than there are people. (Luverne's latest census in 2020 fell just short of 5,000.)

The filming crew focused on both the nut-

cracker collection — now at more than 5,000, and also the community's unique draws.

For example, they were in Luverne earlier this year to explore the Blue Mounds

State Park.

The segment will air just after 10 p.m. Wednesday, Dec. 14, on the CBS local channels. It can also be watched on wcco.com any time after that.

Ballot discussion stems from allegations, harassment/from 1A

tion results did not find any discrepancies in tabulation and was certified as accurate.

The Nov. 8 general election wasn't the first election in 2022 in Rock County.

Due to a special election called to fill the open District 1 U.S. representative seat, an extra primary and election was conducted this summer in the timeframe of the 2022 midterm elections.

The overlapping of deadlines led to more ques-

tions coming to the auditor's office.

Kurtz's conversation with township supervisors was supported by the county commissioners, who all attended the township association meeting.

Commissioner and Board Chairman Jody Reisch said commissioners directed Kurtz to have callers who have questions about the state's voting process talk directly to the board.

"If there is an issue, we

can fix it," he said.

"We all want things done the right way and we have no time for anybody to be belligerent or treat folks less than kind. I am glad Ashley brought this up today. We are open to suggestions to make this fair and good to exercise your right as a U.S. citizen."

Township supervisors decide which voting system to use in their individual townships. Many townships turned to mail ballots

due to the lack of people wanting to serve as election judges, accessible polling locations and cost of electronic voting machines.

Kurtz understands those township supervisors who've chosen to be mail ballot precincts and their reluctance to return to in-person voting.

"Nobody wants to sit there all day, especially at primary elections when you sit there all day for a handful of voters," she said.

#TellUsTuesday Results

Scan Here to Vote for this Week's Survey!



How Much Christmas Shopping Do You Have Done?

Started	19%
Almost done	46%
Nowhere close	12%
Haven't started	23%

Dial-a-Specialist

Your One Stop Guide to Local Businesses

DR. MICHAEL SMITH
 Most Insurance Accepted
ROCK COUNTY CHIROPRACTIC
 Laser Therapy • Custom Orthotics
 Men, Women & Children's Health
 Athletic Care • Massage Therapy
 Work & Auto Injuries • Postural Restoration
WWW.ROCKCOUNTYCHIROPRACTIC.COM
 283-2561 • 103 E. MAIN, LUVERNE

• Chiropractic

Viking Electric LLC
Tim Gangestad
 Owner
 (507) 290-2595
Viking electric
 Conquering all of your electrical needs!
 Residential • Commercial • Agricultural

• Electrician

Luverne
 MINNESOTA City Offices
 Love the life!
 PO Box 659, Luverne, MN 56156
 507-449-2388 (24 hour voice mail)
www.cityofluverne.org

• City

LUVERNE HEALTH & WELLNESS
 Codie Zantenhorst, DC
 LuverneChiro.com
 Chiropractic Acupuncture Massage
 Auto, Work, and Sports Injuries
 109 S Freeman Ave Luverne, MN
 507.449.4400

• Chiropractic

Hills day care receives boost from state grant

By Mavis Fodness

The city of Hills received a \$120,000 grant from the Minnesota Department of Employment and Economic Development.

The money will further the city's project to convert a former commercial building into a facility that houses three independent family child care businesses.

Hills was one of 17 communities who split \$2.5 million to increase the supply of quality child care providers to support regional economic development.

Governor Tim Walz announced the grant awards in a Thursday, Dec. 1, press release.

"In every community across the state, we hear from families and small businesses that increasing access to affordable child

care is the best way to support the work force, grow our economy and foster economic prosperity," Walz said.

Hills began their day care project earlier this year when city officials acquired a tax-forfeited property from the county.

They spent \$25,000 cleaning up the commercial building located on South Main Avenue.

The building formerly housed four individual businesses before most recently becoming a private home.

Shortly after acquiring the building, Hills officials requested and received \$100,000 from Rock County commissioners to assist in the building's remodel.

The \$100,000 was a portion of federal dollars the county received from the federal American Rescue Plan Act of 2021.

Tax abatement/from page 1A

The new warehouse will be located near the railroad tracks on the extreme south side of the cooperative's property.

Discussions with the Ellis & Eastern Railroad resulted in the change in the building's design.

"They didn't want them (New Vision) in the railroad's right of way, so they are redesigning the building a little bit," Oldre said.

"They will still maintain that square footage but they will shift the entry point."

The warehouse will store bagged feed for purchase by customers. New Vision expects to hire two additional full-time employees as a result of the expansion, bringing the total number of employees to 25, according to Oldre.

The warehouse is the fourth abatement granted to New Vision Co-Op in the past 11 years.

The company received a five-year abatement in 2011 to build the \$16 million Magnolia feed mill.

A 10-year tax abatement was granted in 2016 for a \$1.2 million fertilizer and grain storage expansion at the Hills location.

sion at the Hills location.

Nykamp housing initiative request granted

Commissioners unanimously granted Alex and Shannon Nykamp a five-year tax abatement on a new home built in Battle Plain Township.

The public hearing also took place Nov. 8 with no public comments.

Abatement total is \$4,046 (\$809 per year) and involves only the county's increased share of new house value.

The new home's value is estimated at \$381,400. The land value and previous house value prior to the new home was \$30,000.

The request is part of the Rock County Home Initiative for homeowners to request tax abatement on new residential structures. "The program is doing exactly what we want it to do," said commissioner Jody Reisch.

"We continue to get our base for our taxes and yet we are adding value to the other entities."

Cleveringa Construction business changes hands/continued from page 1A

struction careers under Van Aartsen Construction where Cleveringa got his start in the trade more than 30 years ago working for Darrel and the late Gerrit Van Aartsen.

"A big thank you goes to Darrel and Gerrit for what I've learned in the construction business," Cleveringa said.

He started his own business in 2005, and Uithoven and Sandbulte began shortly after the business was established.

All three are quick to point out that the business wouldn't be where it is today without their full team of employees, 10 in all.

"It's not just us. It's the whole crew," Uithoven said. "We wouldn't be anything without them."

Sandbulte said, "It took all of our employees to get where we're at."

Cleveringa said most of his employees have been with the business for 10 or more years.

"I can't say enough good about our employees," he said. "Anything we ask them to do, they just do. They take care of you. ... But you never put somebody on something you wouldn't do yourself."

Uithoven said employees have stayed because of that.

"I think we have that respect for each other," he said. "We're basically like family. We spend more time with each other than we do with our own families."

And they're quick to thank their own families. Uithoven and his wife, Linda, have four children, and Sandbulte and his wife, Angie, have three.

"We thank our families

and our wives for putting up with all the time we put in," Uithoven said.

Cleveringa said he feels blessed the business has done well enough to support his workers and their families.

"It's the good Lord who took us to where we're at," he said.

"I never dreamed I'd have something to sell when we went into this. You only hoped you'd have enough money to make a living. Now, being able to pass it on to these two boys is ... very fun."

The business sale takes effect Jan. 1, and Cleveringa will phase into retirement.

"It's time. We signed papers last Monday. It was a bittersweet moment. There were a few tears shed

... tears of joy."

Cleveringa will work part time for Uithoven and Sandbulte, selling homes and helping with business connections.

"It's fun to watch these guys take over. It just is. It's neat to pass along something you have made a career of," Cleveringa said.

"Listening to these guys and watching these guys work. They're craftsmen. I probably wouldn't sell this to just anybody. I just know what they can do."

Opportunity for change

Cleveringa Construction formerly officed out of the family home west of Luverne, but he and his wife of 46 years, Carol, are moving to their lake home in Hendricks.



Mavis Fodness photo/1208 Flannel Fest 2022

Eighteen four-person teams competed in "Pizza, Pitchers & Puzzles" Saturday afternoon during Flannel Fest at Big Top Tents and Events in Luverne. Teams had two hours to complete a 300-piece puzzle, drink 12 beers and eat one large pizza.

Flannel Fest offers friendly Winterfest competition

By Mavis Fodness

Carolyn Diedrich of Luverne took top honors at the inaugural Flannel Fest chili cook-off Saturday at the Big Top Tents & Events.

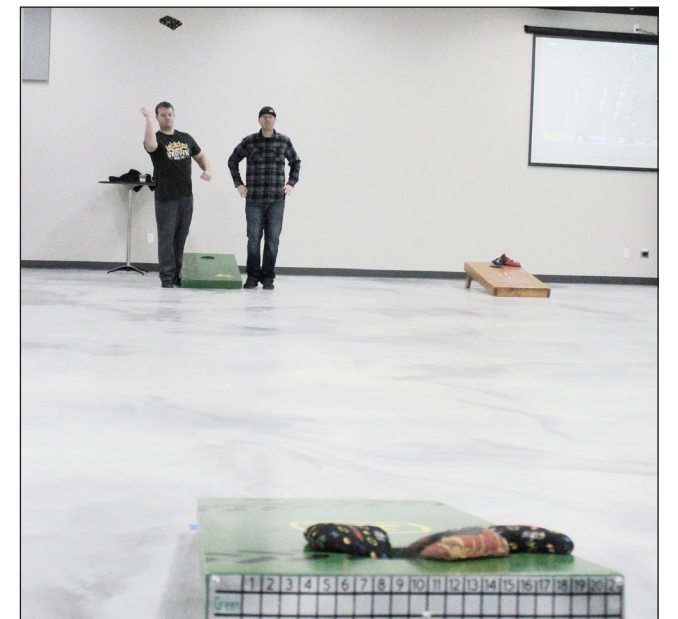
Diedrich bested six other competitors in the fundraiser for the Luverne Hockey Association.

"The whole day was a great turnout," said Amber Lais with the Luverne Area Chamber. "Some things weren't well attended, but overall it was a good day."

The most attended events included "Pizza, Pitchers & Puzzle," where 18 four-person teams had to complete a 300-piece puzzle, drink 12 cans of beer and eat a large pizza, and Beer Pong, where 20 teams competed against each other.

In the best-dressed flannel contest, Logan Norman and Madi Oye took top honors.

At right, Derek Shubert (left) tosses a bag as his opponent Chad Newell watches during the Cornhole tournament.



In the photograph above left, special mugs were designed for the first Flannel Fest event. Pictured above right, Steve Vis (from left), Kayla Vis, Lisa DeBoer and Dave DeBoer work to complete the puzzle portion of the "Pizza, Pitchers & Puzzle" event at Big Top Tents and Events Saturday afternoon during the Luverne Winterfest. Activities at Big Top were dubbed "Flannel Fest," and attendees were encouraged to dress in flannel shirts.

You can recycle more than your paper!

You can also recycle:

- + Metal
- + Plastic
- + Glass
- + Paper
- + Cardboard
- + Aluminum

Keep the OCEAN Clean

INJURED AT WORK? DISABILITY DENIED?

Contact Us Today For Free Advice

Workers' Compensation
Long-Term Disability
Social Security Disability

507-923-4169
www.GetFields.com

Steve Fields
Minnesota Attorney

FIELDS LAW FIRM

AMERICA'S ORIGINAL BUTCHER
OMAHA STEAKS
SINCE 1917

Butcher's Deluxe Package

- 4 Butcher's Cut Top Sirloins (5 oz.)
- 4 Air-Chilled Boneless Chicken Breasts (5 oz.)
- 4 Boneless Pork Chops (6 oz.)
- 4 Individual Scalloped Potatoes (3.8 oz.)
- 4 Caramel Apple Tartlets (4 oz.)
- 1 jar Omaha Steaks Seasoning (3.1 oz.)
- 8 FREE PureGround® Filet Mignon Burgers (6 oz.)

71941ALG separately \$225.94
SPECIAL INTRODUCTORY PRICE **\$99.99**

8 BURGERS FREE

ORDER NOW! ▶ 1.855.402.7187 Ask for 71941ALG
OmahaSteaks.com/GiftGiving3287

Savings shown over aggregated single item base price. Photos exemplary of product advertised. Limit 2. 8 free 6 oz. burgers will be sent to each shipping address that includes 71941. Standard S&H added per address. Offer available while supplies last. Items may be substituted due to inventory limitations. Cannot be combined with other offers. Other restrictions may apply. All purchases acknowledge acceptance of Terms of Use. OmahaSteaks.com/terms-of-use/CSI or call 1.800.226.9872 for a copy. Expires 12/31/22. | Omaha Steaks, Inc.

THE BEST STEAKS OF YOUR LIFE OR YOUR MONEY BACK

Wellness program makes getting up off the floor much easier

While taking pictures at the Luverne Cardinals season-opening gymnastics match,



RUMINATIONS

By Mavis Fodness, Reporter

I knelt down to get a better shot of the athletes.

It's not unusual for me to duck down, mainly so I don't block any of the spectators' views.

What made last week notable is that I easily stood up without the usual grunts and side rolls to push myself off the floor.

A month ago I joined an online fitness group called S7 Wellness.

Since then I've been held accountable to calorie counts, taking 7,000 steps and drinking at least 75 ounces of water each day.

So far, I've lost 15 pounds, which my oldest daughter, who is S7's nutrition coach, contributes mainly to water loss.

I'll take the water loss, especially since I've kept that weight off through Thanksgiving.

With fewer pounds, I fit into my clothes better. I sleep better. With twice-a-week yoga workouts I find (much to my surprise) I can get to my feet a lot more fluidly than I used to.

I've learned fat can be lost only by eating better and not by sweating it off. That suits me just fine, since I don't enjoy run-

ning or lifting weights.

The online wellness is tailored to fitting into my current routine.

I am eating foods I normally would have eaten, but I am making better choices, eating regularly while watching the portion sizes.

Through a phone app I dutifully enter the items I eat at each meal including the two squares of Ghirardelli chocolate.

Surprisingly, I used to not eat enough calories during the week and binged on the weekends. When I was hungry, I would grab something convenient that was high in calories but low in nutritional value.

Now I pack a lunch and snacks when I am at the office and on those occasions I chose to eat a restaurant, I check to see if their menu is online before walking through the door. (I love those places who include calories with their food offering so I know how much I am consuming.)

Slowly, I'm bringing my metabolism back to where my daily calorie count is increasing and the scale is staying at the same weight or going lower.

Best of all, I am able to easily get up off the floor without embarrassment.

Thank you, Chamber, for the events promoting for our little city

STAR HERALD EDITORIAL

The Luverne Area Chamber's annual meeting is Monday night, and it will be a time for board members, businesses and individuals to reflect on the organization's mission and accomplishments.

Looking at the agenda, it appears the past year has seen a dizzying level of community events to promote the town.

For example, in 2022 the Chamber and its partners:

- Welcomed approximately 6,000 visitors to the Rock County Veterans Memorial Building.

- Assisted in coordinating three charter bus tours and seven family reunions.

- Answered approximately 50 calls per week from people asking for information about individuals, businesses, organizations, institutions and events.

- Celebrated community growth by hosting 12 ribbon-cuttings.

- Worked on member information and support through 11 "Love the Business Coffees."

- Worked with the Cardinal Pride Committee, Luverne Baseball Association, Rock County Fair Board and community businesses

- on hosting special events in the community.

- Distributed over 75 hometown greeter bags to new residents.

- Assisted in coordinating the nutcracker fine art project of placing and dedicating three 7-foot nutcrackers along the Main Street corridor.

- Conducted a successful charitable raffle of two E-bikes, with proceeds supporting new projects, events and initiatives approved by the Chamber Board.

- Hosted community events that drew an estimated 37,000 people to town throughout the year.

- Distributed the Star Herald's Luverne Visitors Guides (filling over 1,500 individual requests plus shipping of 25 cases of 90 guides to Travel Information Centers and Chambers).

- Continued promoting the

community through partnerships with Explore Minnesota.

In the December Chamber newsletter, director Jane Lanphere thanked businesses, organizations and individuals for their help in making the holidays special and making the community vibrant all year long.

"On behalf of the adults and children of this community — our most sincere thank you for weeks of wonderful special events and happenings," she wrote.

"There are countless institutions, organizations, businesses and individuals who have worked diligently to provide so many great experiences for those of us living here and away. There is hardly a day of the week that something unique isn't going on that we can do and enjoy ... and that's because of all of you."

In our opinion ...



Take close look at your vehicle tires as winter snow returns

Question: How do you determine if your tires are unsafe for winter driving?

Answer: Over the years, I have investigated numerous crashes where worn tires were a contributing factor. Tires with inadequate tread depth may cause your vehicle to skid or slide out of control on a slippery or wet road surface. It is important to remember that unsafe tires can hydroplane on both wet and snow covered roadways.

When losing control of your vehicle, you can easily go off the road and into the ditch, or into oncoming traffic, possibly causing serious injury or death.

According to Minnesota State Statute 169.723 a tire shall be considered unsafe if it has:

- (1) Any part of the ply or cord exposed; or
- (2) Any bump, bulge or separation; or



ASK A TROOPER

By Sgt. Troy Christianson,
Minnesota State Patrol

- (3) a tread design depth of less than 2/32 (1/16) of an inch measured in the tread groove nearest the center of the tire at three locations equally spaced around the circumference of the tire, exclusive of tie bars or for those tires with tread wear indicators; or
- (4) Been worn to the level of the tread wear indicators in any two tread grooves at three locations; or
- (5) A marking "not for highway use," or "for racing purposes

only," or "unsafe for highway use;" or

(6) Tread or sidewall cracks, cuts or snags deep enough to expose the body cords.

My best advice is to keep an eye on your tires. Check your tire pressure often as it can be as much as 50 percent underinflated before it is visibly noticeable. Use a pressure gauge to check each tire and know what your pressure should be. Routine maintenance is good insurance; rotate, balance and be

sure that your vehicle is correctly aligned, according to your vehicle owner's manual.

Taking a few seconds to walk around your vehicle before leaving for your destination can pay off, potentially keeping you from getting into a crash. Speaking from personal and professional experience, the "snow" tires I run at this time of the year have made all the difference throughout some of the deepest snow and treacherous conditions. I would not want to be without them. Having a set of tires with good, legal tread depth will increase your chances of not being involved in a crash, especially when the weather and road conditions become poor.

Send your questions to Sgt. Troy Christianson — Minnesota State Patrol at 2900 48th Street NW, Rochester MN 55901-5848. (Or reach him at, Troy.Christianson@state.mn.us)

VOICE OF OUR READERS

Ahrendts applaud Winterfest, choir concert

Letter to the Editor:

A job well done to everyone who worked so hard to make the Winterfest weekend a success.

The highlight for us was the Cardinal Choir at the high school choir Christmas concert. Hats off to Seana Graber for combining the children with special needs with other choir members. The smiles on their faces showed it was a highlight for them also. It was heartwarming!

**Ken and Pauline Ahrendt,
Luverne**

E-mail: editor@star-herald.com Web site: star-herald.com
Phone: 507-283-2333 Fax: 507-283-2335

Published Thursdays by Tollefson Enterprises
POSTMASTER: Send address changes to
117 West Main, P.O. Box 837, Luverne, MN 56156.
Periodicals postage paid at Luverne,
Permit #33 and at additional mailing offices.

General manager: Rick Peterson
Sales: Wyatt VanSteenberg
Office manager: Deb Lusty
Office assistant: Jennifer Nelson
Production Manager: Heather Johnson
Production: Brooke Huisman

News staff:
Lori Sorenson, editor
Mavis Fodness, reporter
Esther Frakes, copy editor
Greg Hoogeveen, sports editor

Rock County
STAR HERALD
Rock County's newspaper since 1873

(ISSN 0889-888X)

SUBSCRIPTION RATES
\$74 per year in Rock County; \$91 per year all other areas.
Single copies \$1.25

Entire contents copyrighted by
Tollefson Publishing Roger Tollefson, publisher

The *Star Herald* encourages letters to the editor expressing the opinions of readers and intends to print all letters. Letters not meeting the guidelines will not be printed. The *Star Herald* will verify the authenticity of all letters. Letters must have the name of the writer, a signature and address. Unsigned letters will not be considered. The *Star Herald* will edit for grammar, spelling and clarity. Any letters containing offensive language, libelous or slanderous material, or misleading or false information will be rewritten before being published. The *Star Herald* will not publish letters written with the sole intent to advertise or serve as a thank-you. Letters with more than 300 words may be edited. The deadline for letters is Monday 10 a.m. They may be delivered or mailed to the editor, *Rock County Star Herald*, P.O. Box 837, 117 W. Main St., Luverne, Minn. 56156.

ON THE RECORD

Dispatch report

Nov. 25

•Complainant on 20th Avenue and 71st Street, Valley Springs, South Dakota, reported a railroad crossing repair.

•Complainant on Highway 23 and 141st Street, Garretson, South Dakota, reported a driving complaint.

Nov. 26

•Complainant on S. Main Avenue, Hills, reported a disorderly.

•The Lyon County Jail in Rock Rapids, Iowa, issued a warrant.

•Complainant on E. Main Street reported a road closure.

•Complainant on County Road 4 and 170th Avenue, Luverne, reported a driving complaint.

•Complainant on Kniss Avenue and Virginia Street reported a driving complaint.

•Complainant on S. Kniss Avenue reported an open door.

Nov. 28

•Complainant on Brown Street and McKenzie Street reported suspicious activity.

•Complainant reported a vulnerable adult.

•Complainant on W. Gabrielson Road requested roadside assist.

•Complainant on S. Kniss Avenue reported suspicious activity.

Nov. 29

•Complainant reported theft.

•Complainant on Commerce Road reported a civil issue.

•Complainant on S. Donaldson Street reported a miscellaneous public assist.

Nov. 30

•Complainant east-bound on Interstate 90, mile marker 6, Beaver Creek, reported a driving complaint.

•Complainant on County Road 20, Beaver Creek, reported a driving complaint.

•A fire call was reported at location on 71st Street, Beaver Creek.

•Complainant on N. Estey Street reported vandalism.

•Complainant on 201st Street, Jasper, reported a civil issue.

Dec. 1

•Complainant on Highway 23 and County Road 4, Valley Springs, South Dakota, reported a driving complaint.

•An accident was reported at the Luverne High School.

•Complainant on S. Anna, Hills, reported a harassing communication.

•An outage was reported.

•Complainant on 111th Street, Luverne, reported a driving complaint.

•Complainant on Highway 23 and County Road 5, Beaver Creek, reported a driving complaint.

•A fire call was reported on E. Maple Street.

•Complainant on S. Donaldson Street reported a civil issue.

•Complainant on N. Estey Street reported vandalism.

•A warrant was issued.

•Complainant on N. Oakley Street reported property damage.

•Complainant on N. Oakley Street reported property damage.

Dec. 2

•Complainant on E. Main Street, Hardwick, reported a driving complaint.

•Complainant on E. Luverne Street reported a civil issue.

•Complainant on N. Freeman Avenue reported a civil issue.

•Complainant on N. Cedar Street reported vandalism.

•Complainant on N. McKenzie Street and E. Dodge Street reported vandalism.

•Complainant on N. Cedar Street reported vandalism.

In addition, officers responded to 3 motor vehicle accidents, 3 deer accidents, 2 vehicles in the ditch, 1 transport, 2 escorts, 18 ambulance runs, 1 parking violation, 4 paper services, 4 animal complaints, 1 fingerprint request, 7 burn permits, 7 background checks, 4 gas drive-offs, 3 alarms, 4 purchase and carry permits, 3 stalled vehicles, 36 traffic stops, 5 abandoned 911 calls, 1 test, 3 welfare checks and 2 follow-ups.



Heather Johnson photos/1208 nativity sets

Festival of Nativities

Over 300 people viewed nativity sets at St. John Lutheran Church over the two-day Festival of Nativities during Winterfest weekend. There were 285 nativities on display loaned to the event by 46 people. The committee of Janet Marshall, Connie Boler, Becky DeBoer, Chris Fick, Carol Goehle, Heather Johnson and Becky Booe had worked since September to plan this year's event. Weekend refreshments were managed by Esther Frakes and Cindy Kemp.



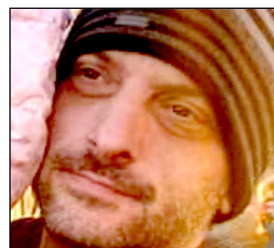
Body of missing Luverne man found near truck in ditch

By Lori Sorenson

The search for a missing person over the weekend ended sadly Monday when the Rock County Sheriff's Office announced that the man had been found, but that he'd died near his pickup that was in the ditch near Hardwick.

The search for 39-year-old Jason Remme, Luverne, began Saturday morning after his family reported to the Sheriff's Office that he hadn't been seen since Friday around 7 p.m.

An "attempt to locate" was circulated among surrounding law enforcement agencies, and his mother, Idella Rye, shared on Facebook a



photograph of her son and his pickup.

"He has epilepsy. We don't know if he has any of his meds," she wrote, asking people to call the Sheriff's Office if they'd seen him.

She said he'd been seen Saturday late afternoon at Blue Mound Liquor where he'd left his cell phone.

The post was shared widely on social media, and on Monday the Rock County Sheriff's Office received a report of a pickup in the ditch near the intersection of 191st St. and 160th Ave near Hardwick.

The Ford pickup matched the descrip-

tion of the one Remme had been driving.

In a statement released Monday evening, Sheriff Evan Verbrugge said Remme had been found, but that he had died about 20 yards from where his truck went in the ditch.

Temperatures Saturday night hovered in the teens.

"Foul play is not suspected," Verbrugge said. "Our deepest sympathies go out to the Remme family during this time of grief."

Remme was transported to Ramsey County Medical Center where an autopsy will be conducted. Hartquist Funeral Home assisted with transportation.

Winterfest/ From page 1A

The craft show at school was a draw for holiday shopping, and photos with Santa (Bryce Niessink and Janice Fick) attracted families from far and wide.

Flannel Fest at Big Top Tents and Events was a weekend highlight for Winterfest goers.

A chili cook-off supported youth hockey, and friendly competitions included bean bags, beer pong and "Pizza, Pitchers & Puzzles."

Vocalist Madi Oye led karaoke, and a flannel fest contest honored the best-dressed attendees.

"It is a great event that offers a different kind of thing to do. It should be such a fun time for everyone," Lanphere said ahead of the weekend to promote Winterfest.

The History Center's nutcracker open house boasted 5,000 (the latest count) nutcrackers on display.

The Carnegie Minstrels highlighted the Community Christmas Cantata, "Let There Be Christmas" in the school performing arts center to benefit the Rock County Food Shelf.



Hinkly Nutcracker Open House

Above right, Brittany and Levi Forness enjoy music by Shirley Harrison as she plays her dulcimer Saturday afternoon at the Hinkly Nutcracker Open House. The event, which featured tours of the historic home and unique nutcracker displays, was part of Luverne's annual Winterfest Celebration over the weekend.

(Photos shared by Kristin Suhr)

PALACE THEATRE		UPCOMING EVENTS
	Black Panther: Wakanda Forever PG-13	Friday, December 9 7:00 pm Sunday, December 11 2:00 pm
Tickets: \$5 for kids age 3 – 12 th grade, \$7 for adults		
	Luverne Street Music Presents: The Sound of Christmas	Saturday, December 10 4:00 pm 6:30 pm
FREE RECITAL		
	Afternoon Escape: Ticket to Paradise PG-13	Thursday, December 15 2:00 pm
Tickets: \$5		
	Ring in the New Year with MASON DIXON LINE!	Saturday, December 31 7:30 pm
<i>The Midwest's premier Country-Rock Band!</i> TICKETS ON SALE NOW!		
104 E. Main St. • Luverne, MN 56156 • 507.283.4339 WWW.PALACETHEATRE.US		

YOU CAN RECYCLE MORE THAN YOUR PAPER!



You can also recycle:
+ Metal + Paper + Cardboard
+ Plastic + Glass + Aluminum



Mavis Fodness photos/1208 Respect Lunch 2022

Respect Lunch allows Luverne Elementary students to practice good table manners

Luverne Elementary School's 506 kindergarten through fifth-grade students enjoyed their annual Respect Lunch Friday when kitchen staff prepared a sit-down meal of mashed potatoes, corn and ham, with sugar cookies decorated as Christmas trees for dessert. Students dressed up for the occasion and invited adult parents or guests to join them at the tables. The 506 kindergarten through fifth-grade students practiced passing the meal items to one another and carried on polite conversations at their tables, which were decorated with

tablecloths, centerpieces and disposable flatware. Diners were serenaded with live piano music by Janine Papik. The event is organized by the school's Parents Partners in Education or PPIE.

Above: Volunteers Kathy Eggebrecht (right) and Marilyn Bergman distribute meal baskets to each of the tables of fourth-graders.

At left: Plates of sugar cookies stand ready for delivery to tables as volunteer Courtney DeBoer counts out festive paper plates, napkins and flatware.

Above, right: Janine Papik plays festive piano music for students and invited guests as they dine.

At right: Volunteer George Bonnema places a basket of ham slices on the table for fourth-graders (from left) Brecken Van Belle, Boston Groff and Avery Van'tHof.



Saturday's a busy day for Santa

Ol' St. Nick makes stops in Beaver Creek, Hardwick

Santa Claus will stop in **Beaver Creek** Saturday, Dec. 10.

He will pose for pictures and listen to Christmas lists from 9:15 to 10:30 a.m. at the city of Beaver Creek office.

Saturday afternoon Santa travels to **Hardwick** for Santa Claus Day, which is from 2 to 3:30 p.m. at the Hardwick Community Hall.

Zoo Man Show takes place from 2 to 2:30 p.m. Cookie decorating and make/take item crafts along with pictures with Santa will be from 2:30 to 3:30 p.m.

Santa's visit to Hardwick is sponsored by the Hardwick Community Club.

MENU

Monday, Dec. 12: Baked seasoned fish, potatoes, green beans, dinner roll, dessert.

Half-Price Day sponsored by Christian Reformed Church.

Tuesday, Dec. 13: Meatloaf, corn, baked potato with sour cream, bread, dessert.

Wednesday, Dec. 14: Baked chicken, peas and carrots, mandarin oranges, rice pilaf, gelatin with whipped topping.

Thursday, Dec. 15: Sloppy Joe on a bun, romaine salad with dressing, baked beans, warm peaches.

Friday, Dec. 16: Turkey and noodles, California Normandy vegetables, warm apple slices, cake.

Half-Price Day sponsored by Grace Lutheran Church.

LSS Dining offers well-balanced and affordable meals in a community atmosphere.

Call Pam Franken at 283-9846, extension 11 to reserve one day prior, to arrange to pick up a dinner or for home-delivered meals.

Gift certificates are available at the meal site or online at www.lssmn.org/nutrition.

1943: Colby's Diamond Club story continues

The following article is part of the Diamond Club Member group that began in the January 7, 1943, issue of the Rock County Star Herald. Members of this group consist of persons of age 75 and older.

The following appeared in The Rock County Herald on July 1, 1943, and is continued from last week.

Helped Bind Grain

Before she was married, Mrs. Ellis W. Colby learned how to do both indoor and out of door work. She states that she has bound grain after a "self-rake", the predecessor of the binder. "We'd bind all day," she states, "and in the evening, we'd shock up what we bound during the day."

Her mother had worked in a tailor shop in Norway, and from her, Mrs. Colby learned the art of sewing. She has sewn many men's shirts, and other garments by hand, she declares. Her mother also could weave, and Mrs. Emmett Kennedy, daughter of Mrs. Colby, has a portion of Mrs. Colby's cloth which she has then made into a petticoat for her own wedding.



BITS BY BETTY

By Betty Mann,
Rock County Historian

During the early days of Martin township, it was customary to walk to town, in her case about four miles each way, to buy groceries. Many times, she states, she walked to Beaver Creek carrying a pail full of eggs or butter. Butter would bring about 10 cents a pound, and eggs about six cents per dozen. However, prices of commodities purchased were correspondingly low. Shoes, the sturdy kind with copper toes, sold for about \$2 per pair. When she was a girl, nearly

Walked to Town

Bits, continued on page 7A

REMEMBER WHEN

10 years ago (2012)

•More than \$900 was raised for the Rock County SHARE program during photos with Santa at the Winterfest Craft Show Saturday at Luverne Elementary School. Rodger and Dianne Ossenfort played the part of Santa and Mrs. Claus for their 26th year. They posed for pictures, listened to requests for gifts and gave treats to children who came to see Santa. One child said, "Kind of," when Santa asked him if he had been a very good boy.

25 years ago (1997)

•The early-morning breakfast crowd got a rude awakening Wednesday morning when they met at Hardee's for coffee. On the door, a black and white sign read, "Sorry. We are closed. Thanks for your local patronage."

According to District Manager Tarryl Olson, the restaurant closed Tuesday afternoon. In a brief interview with the *Star Herald* Tuesday night, Olson said only that the business was closed and he was in the process of cleaning it out.

He would not comment on why the restaurant closed.

50 years ago (1972)

•Residents of Rock County received an early Christmas gift this week — compliments of Mr. and Mrs. Ben E. Schoneman, Luverne.

The Luverne couple this week turned over 34 acres of land in Luverne Township to be used as a county park.

The donated land is located two miles south of Luverne near Highway 75 and runs south to CSAH 16. Seven acres is to be developed outright including the south edge of the southern most pond. The remaining acres have been deeded to the county, but the Schonemans will retain gravel rights there. The only other stipulation in giving the land to the county is that no admission be charged once the park is developed.

Schoneman is a retired veterinarian who has resided in

Luverne since 1947.

75 years ago (1947)

•The local school board last week approved a "cost-of-living" salary increase of \$125 each to all Luverne teachers. Representatives of the Luverne Educational association met with the school board, pointing out that the cost of living had increased about five per cent since they signed their contracts. After some discussion, it was agreed to grant each teacher an increase of \$125, which represents on the average a five per cent salary increase.

100 years ago (1922)

•Gratifying progress is being made by the committees of Dell-Hogan post and the Women's Auxiliary of the American Legion, in charge of the different phases of work connected with the indoor circus which will be held on Friday and Saturday, December 8 and 9. The list of varied attractions they have already arranged for promise to make it equally as good, or probably it will even excel every carnival project that has ever been held here.

The armory will be lined on all sides with booths and stands, about fourteen or fifteen in all, each featuring a different attraction. There will be "raffle" stands, side show tents, lunch counters, and shooting galleries.

The circus will be held on the evening of each day. At eight o'clock the band will begin to play, starting the good time which will last far into the night. A boxing match between the two Davies boys of Magnolia will be put on at about nine o'clock, followed by several other exhibition attractions of much merit.

The greatest curiosity will undoubtedly be the old time bar and dance hall, a rejuvenation of the days of '49, when the dances were held in the bar rooms and thirst was slakened after each dance. Thirty masked girls, each a proficient dancer, will be in attendance.

Know It and Grow It: Tips for success with holiday plants

By **George Bonnema**
Luverne horticulturalist

We visited our son in Detroit over Thanksgiving weekend, and that trip always includes visiting a couple of the biggest and best greenhouses in the city as well as the Eastern Market in downtown Detroit. For a gardening and plant addict, this makes driving 14 hours each way a bonus on top of the time spent with Grant.

I am inspired but not tempted by some of the plants and fresh holiday décor we get to see. Case in point were the beautiful white hellebores loaded with flowers and buds ... excellent plants for a greenhouse, not so much for our homes. They thrive in a cool environment, but humans tend to like warm, and you can't please both, so the plant will soon become the victim.

Another holiday temptation are paper white narcissus bulbs. They are fun to force and will grow and bloom quickly in a tray of rocks and water. The description says the flowers are fragrant ... and they are. What the description doesn't say is what that fragrance is like. If you want to know, try growing them.

Flowering plants that are traditional but more sure to please are cyclamen, poinsettias and amaryllis.

Poinsettias are a traditional favorite. The colored leaves are just that. The flowers are the tiny yellow cyathia in the center of the colored leaf cluster. The plants are happiest with uniformly moist soil. Too wet will rot the roots. Dry to the point of wilting, even just a little, will result in leaf drop. Bright indirect sun will keep the plant happy.

Cyclamen plants grow from a bulb (corm) that

sits at soil level. The plant will continue blooming throughout the winter if given the right conditions.

Any blooming plant has a higher light requirement than do non-bloomers because sunlight gives energy, and energy is necessary for the plant to continue producing flower buds.

Cyclamen grow best in a cool, (although not as cool as the aforementioned hellebore) brightly lit area. An east-facing window is perfect. This is another plant that prefers uniformly moist soil, and by uniformly moist, I'm referring to moist like a cake is moist. When the flower on the stem has finished blooming, give the stem a gentle "tug" to pull it off the bulb. I know people who have successfully kept a cyclamen in bloom year-round for several years.

Amaryllis are the drama plants for winter. They grow from a bulb, and like a tulip, the flower buds form in the bulb prior to its going dormant. Your job as the plant keeper is to persuade that flower to come out of the bulb and bless you with its beauty.

In recent years "waxed" bulbs are the easy route because you don't have to plant the bulb in soil. Looks easy and is easy, but I have yet to see a real success story. The flower stem gets pretty heavy so if it actually gets to that stage, it is difficult to keep it standing upright. And when it's done or you're tired of it, you pitch it ... end of story.

On the other hand, I believe that when I purchase a bulb like this, I am making an investment in its future, and my plan is to have the joy of a repeat performance year after year.

Next week, I'll tell you how to make that happen.

Bits/continued from page 6A

everyone drove oxen. Mrs. Colby said that she learned how to guide an ox-team by shouting "gee" and "haw" and by cracking a long whip over their backs. After her step-father obtained a team of horses, he'd hitch them to a wagon load of grain and drive to Luverne, and she'd follow him with another load, drawn by oxen.

Railroad Built

Mr. and Mrs. Colby were married in Martin township, Dec. 5, 1883, and they immediately began farming on the southwest quarter of section 16, Martin township. In 1889, the Great Northern railroad was built directly through their farm. "It was nice to have the railroad," Mrs. Colby states, "but I certainly became tired of closing gates. It seemed as though every time a teamster would go through, he'd leave a gate open and our stock would get out."

Mr. and Mrs. Colby lived on that farm for 19 years, and then moved to the farm Mr. Colby bought from his father, the north half of section 10 in Martin township. This, according to Mrs. Colby, was considered the largest tree claim in the county, 40 acres having been planted to trees on that place. The Colby grove, as it was known, was a community landmark, and a gathering place for the people of the community whenever a holiday called for a celebration. Mr. Colby helped to plant the trees, and later, sawed some of them into lumber. They lived on that place from 1904 until 1915, and then moved to Luverne.

Hospitality Compared

Comparing hospitality then to hospitality now, Mrs. Colby recalls how one night, 29 persons stayed at their place, and she made breakfast for all of them the following day. Included in the group were the members of her family, a threshing crew, a bridge building gang, and hired help. She and her daughters would bake 12 to 14 loaves of bread every other day, and a cake every day. "No one needed a special invitation to come to visit on those days," Mrs. Colby says. "They'd just walk right in, and no one thought of letting them go away without having something to eat."

Because of the size of the family she had to care for, Mrs. Colby always had a big garden and raised lots of chickens. Sometimes, she'd raise as many as 500 chicks a year with setting hens alone.

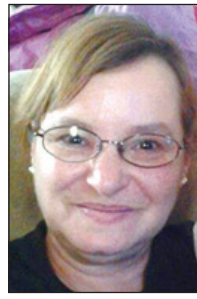
Eight Children Living

Mr. and Mrs. Colby had 10 children, eight of whom are living. They are Mrs. Emil Hoyme, Hills; Mrs. R. Emmett Kennedy, Luverne; Mrs. C. J. Rierson, Hills; Mrs. Paul Pierce, Long Beach; Mrs. George Dawson, Sacramento; James Colby, Long Beach; Mrs. Blaine Christian, Portland, Ore., and Dr. Henry Colby, Minneapolis. She also has 15 grandchildren and one great-grandchild.

Mr. Colby died here in 1926, and at the present time, Mrs. Colby lives alone in her own apartment and does her own work here. As a hobby, she crochets and raises houseplants.

Susan Horton

Susan M. Badger Horton, 69, Luverne, died Wednesday, Nov. 30, 2022, at the Sanford Luverne Medical Center in Luverne.



Visitation will be from 6 to 8 p.m. Thursday, Dec. 8, at the Hartquist Funeral Home in Luverne. Mass of Christian Burial will be at 10:30 a.m. Friday, Dec. 9, at St. Catherine Catholic Church in Luverne. Burial will follow at St. Catherine Cemetery in Luverne.

Susan Badger was born on Oct. 12, 1953, to Gerald and Bertha (Sorrell) Badger in Utica, New York, where she was raised. She was baptized in 1953 and confirmed in 1967 at St. Agnes Catholic Church. She attended school in Utica, graduating from Thomas R. Proctor High School in 1971. Following school, Susan worked as a teacher's aide at local schools. The family moved to Urbana, Ohio, for a few years in the early 1980s before moving to Luverne. While in town, Susan worked in hospitality at Good Samaritan Society - Mary Jane Brown, was a hospice volunteer, and worked several years at Pizza Ranch in Luverne.

Susan was a devoted member of St. Catherine Catholic Church in Luverne, where she taught catechism, volunteered at adoration

chapel, and helped serve at Mass. She loved her prayer books and was a faithful member.

Susan was an avid reader. She enjoyed camping with Jeff and Heather at Kayuta Lake in Forestport, New York, dancing with Denise, and spending time with Brittany and family at The Lake. Susan was a great listener and cared for everyone around her.

Susan is survived by her husband, Earl Horton, of Spokane, Washington; three children, Jeffrey Badger (Heather Bumbolo) of Utica, New York, Brittany (Jason) Remme of Luverne, and Allen Lampron of Luverne; 17 grandchildren; five great-grandchildren; her mother, Bertha Badger of Utica; four siblings, Denise Gleba, Mark Badger (Kim Chapple), Todd (Tracy) Badger, and Kevin Badger of Utica; several nieces, nephews, family and friends; and special friend Marie Chapin.

She was preceded in death by her father, Gerald Badger; two brothers, David and Daniel Badger; sister-in-law Colleen Badger; and nephew Jason Badger.

Arrangements are provided by Hartquist Funeral Home of Luverne, hartquist-funeral.com.

(1208 F)

Donald Matus

Donald Orville Matus, 92, Luverne, died peacefully Nov. 29, 2022, in Urbandale, Iowa.



A memorial service will take place in Luverne at a later date.

Don Matus was born on Feb. 13, 1930, to Frank and Amy Matus in Pipestone County. He was raised and graduated from high school in Beaver Creek.

Don married LaVonne Stoterau on May 25, 1952, in Luverne. After their marriage, Don served two years in the U.S. Army, serving in the Korean War. Don worked over 40 years as a self-employed insurance agent for life and health insurance.

He was a member of

Joseph Jeffer

Joseph Martin Jeffer, 80, Luverne, died Tuesday, Nov. 29, 2022, at the Sanford Luverne Medical Center in Luverne.



A memorial service was Saturday, Dec. 3, at the Dingmann Funeral Home in Luverne. A private family burial of cremains will be at a later date.

Joseph Jeffer was born on Aug. 22, 1942, to Dick and Hattie (Lyftogt) Jeffer in Ashton, Iowa. Joe lived in Ashton, Matlock, Iowa, and Leota and graduated from Edgerton High School in 1960.

Joe married Wilma Smidstra on Aug. 29, 1963, at the American Reformed Church in Luverne. They lived in Luverne. Wilma passed away in 2018. Joe and Wilma had a son, Richard, and a daughter, Rachelle.

Joe had many jobs during his career, and all of them related to driving truck.

When Joe wasn't working, he kept very busy with his love for the outdoors. He enjoyed trapping, bow hunting, muzzle loader hunting, slug hunting and fishing. He enjoyed competing in indoor and outdoor archery, pistol

Bethany Lutheran Church in Luverne.

Don enjoyed fishing and hunting and spending his winters in Apache Junction, Arizona. Don spent the last few years of his life living close to family in Urbandale, Iowa.

Don is survived by sons Robert (Rhonda) Matus of Urbandale and Thomas (Sharon) Matus of Carlsbad, California; a daughter, Jennifer Lee of Edina; five grandchildren; seven great-grandchildren; and a brother, Chuck (Dottie) Matus.

He was preceded in death by his wife, LaVonne; his parents; and a brother, Dale.

(1208 F)

OBITUARIES

Randall Harms

Randall Lee Harms, 54, Sioux Falls, South Dakota, died Tuesday, Nov. 29, 2022, as the result of a workplace accident.



A funeral service was Monday, Dec. 5, at Grace Lutheran Church in Luverne. Burial followed at Maplewood Cemetery in Luverne.

Randall Lee Harms was born on March 5, 1968, to Larry and Lorna (Noerenberg) Harms in Luverne. He was raised in Luverne and graduated from Luverne High School in 1986.

He furthered his education and obtained an associate's degree from Worthington Community College in Worthington. He then attended Southwest Minnesota State College in Marshall for one year. Randy went to work at Sailor Plastics for a short time before moving to Sioux Falls, South Dakota, where he began working at Bell Box, where he remained for 27 years.

He began dating Nikki Smith, who became his life partner. On March 23, 2001, they were blessed with a daughter, Cameron.

Randy was a member of Grace Lutheran Church in Luverne. He loved music and was known as an encyclopedia of classic rock music. Randy was also an avid sports fan. He loved hockey and still

skated. He also had numerous hockey jerseys. He was an avid fan of the Minnesota Vikings, Minnesota Wild hockey team, and attended many local Stampede hockey games in Sioux Falls. He enjoyed going to sprint car races at Huset's Speedway

in Brandon, South Dakota, and in Knoxville, Iowa. He also enjoyed watching the Indianapolis 500 in Indianapolis, Indiana.

Randy loved spending his free time with his family, watching his daughter and nieces' sporting events and other events, and visiting with his parents. His siblings were his best friends.

Randy is survived by his life partner, Nikki Smith of Sioux Falls; daughter Cameron Harms of Brookings, South Dakota; his parents, Larry and Lorna Harms of Luverne; partner parents Randy and Debbie Smith of Sioux Falls; two siblings, Wayne Harms of Luverne and Shelley (Blair) Nattress of Luverne; two nieces; and numerous friends.

He was preceded in death by his sister-in-law, Peggy Harms; and both sets of grandparents.

Arrangements were provided by Hartquist Funeral Home of Luverne, hartquist-funeral.com.

(1208 F)

DEATH NOTICE

Martha Lursen

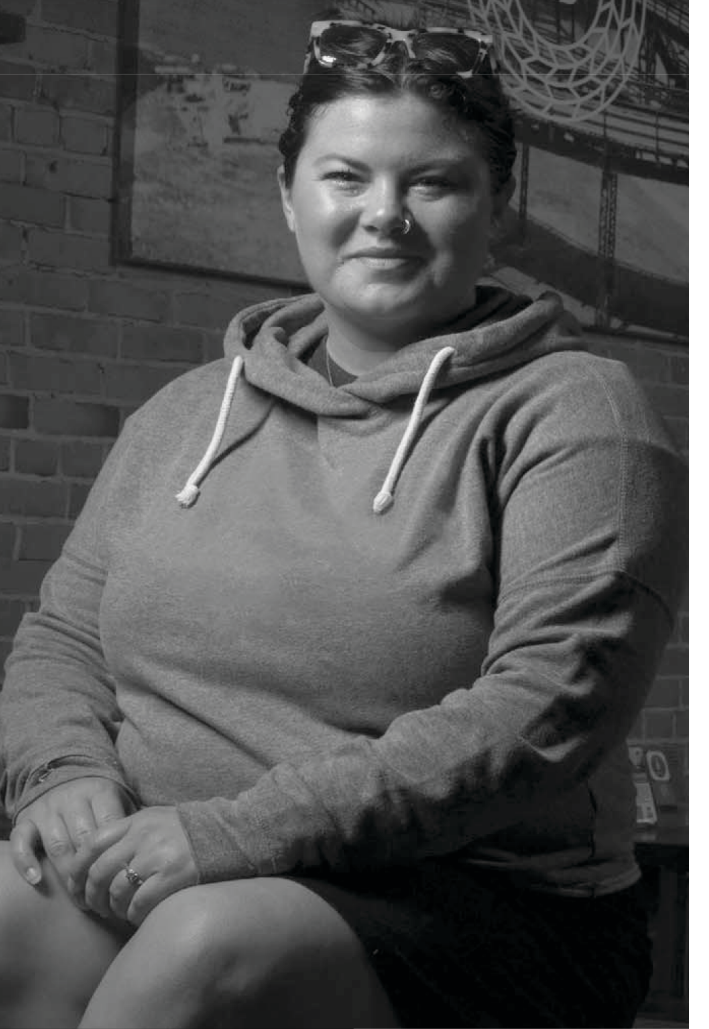
Martha Lursen, 95, Adrian, died Thursday, Dec. 1, 2022, at the Sanford Luverne Medical Center in Luverne.

A memorial service was Monday, Dec. 5, at the Dingmann Funeral Home in Adrian. A private family burial preceded the funeral.

Arrangements were provided by Dingmann Funeral Home of Adrian, dingmannandsons.com.

(1208 DN)

Health insurance
that fits
my budget?
I'm covered.



MNSure helped me
save money on my
health insurance.
Find free help at
mnsure.org



READ US ONLINE!
star-herald.com

(1208 F)

Gymnasts start season with win

By Mavis Fodness

Luverne gymnasts started the 2022-23 season at home Thursday night, Dec. 1, with a clear win over the Blue Earth Area Buccaneers.

The Cardinals posted a 126.075 to 119.575 victory.

Coach Phoebe Flom is relieved to have the first meet end with a win.

"We got the first-meet jitters out of the way," she said. "The next one will go better."

Those jitters led to missed connections on the balance beam and passes on the floor exercise.

Flom said she expects scores to be higher at the next meet.

"There were many rule changes that even the judges were interpreting differently and came to find out were wrong," she said.

The Cardinals take on the reigning conference champions, Worthington Trojans, Tuesday night, Dec. 6, in Worthington.

As a team, Luverne posted the top scores against the Buccaneers in all four events with 35.175 on vault, 29.475 (uneven bars), 29.35 (balance beam) and 32.075 (floor exercise).

On the same events BEA posted 34.025, 27.025, 27.175 and 31.35 respectively.

Individually, Luverne sophomore Ella Reisdorfer topped the all-around with a 34.3 followed by BEA's Addison Armstrong, 33.275. Luverne's Amira Cowell was third, 31.125.

Reisdorfer also topped the podium on the vault 9.075, uneven bars 8.325 and balance beam 8.250. BEA's Armstrong won the floor exercise with an 8.9.

Cardinals placing in the Top 10 included:

•vault: Kianna Winter, second, 8.775; Kendra Thorson, fifth, 8.675; Cowell, eighth, 8.550.

•uneven bars: Cowell, second, 7.975; Hailey Como, sixth, 6.650; Reagan Gangestad, seventh, 6.525, Addyson Mann, eighth, 6.150.

•balance beam: Winter, third, 7.5; Thorson, fifth, 7.45; Mann, sixth, 6.6; Cowell, seventh, 6.35.

•floor exercise: Reisdorfer, second, 8.65; Cowell, third, 8.250; Winter, fourth, 8.1; Como, seventh, 7.075; and Mann, ninth, 6.85.

Luverne's junior varsity gymnasts won the meet over BEA, 111.4 to 93.55.



Mavis Fodness photo/1208 Gymnastics

Sophomore Amira Cowell competes on the balance beam Thursday night, Dec. 1, to open the 2022-23 gymnastics season at home in Luverne against Blue Earth Area. The Cardinals bested the Buccaneers by more than seven points.

Individual stats:

All-around: Reisdorfer 34.3, Cowell 31.125.

Vault: Reisdorfer 9.075, Winter 8.775, Thorson 8.675, Como 8.65, Cowell 8.55

Uneven bars: Reisdorfer 8.325, Cowell 7.975, Como 6.65, Gangestad 6.525, Mann 6.15

Balance beam: Reisdorfer 8.25, Winter 7.5, Thorson 7.0, Mann 6.6, Cowell 6.35

Floor exercise: Reisdorfer 8.65, Cowell 8.25, Winter 8.1, Como 7.075, Mann 6.85

Luverne wrestlers win big in Flandreau

LHS team takes team championship in boys' and girls' divisions, places 15 individual wrestlers on the podium

By Greg Hoogeveen

Luverne Cardinal wrestlers showed up in a big way for their first tournament Saturday, Dec. 3, in Flandreau, South Dakota.

According to coach Jordan Kopp, each and every wrestler contributed to the team and fed off each other's energy in the match.

"These kids left it all out on the mat," he said.

"I remember after the third round, one of the coaches came up and said we had a 30-point lead, and it started to become reality that we were legit contenders."

The Cardinals took the team championships in both the boys' and girls' divisions Saturday, beating out 12 other South Dakota teams.

Madison, South Dakota, was the second-place team, coming in 20 points behind the Cardinals.

In the boys' division Luverne placed 11 wrestlers on the podium.

First-place honors went to Leif Ingebretsen in the 126-pound weight

class and DJ Rock in the 160-pound class.

Second-place winners were Bernie Rock at 113 pounds, Matthew Gangestad at 120, Jaden Reisch at 152 and Sam Rock at 170.

Third-place winners were Josh Stroh at 132 pounds and Masyn Akkerman at 285.

Fourth-place winners were Brody Kopp at 106 pounds, Rayden Boyenga at 132, and Hudson Hough at 138.

In the girls' division Luverne placed four champions. Zakayda Bradley was first at 106 pounds, Julia Hoogland at 126, CeCe Rock at 143 and Andi Luitjens at 154.

"It was an awesome feeling knowing how hard these kids have worked," Kopp said.

"It showed in their wrestling and even better that they were able to take home first place."

The Cardinals were scheduled to travel to the Redwood Valley Invitational Tuesday, Dec. 6, and the Jackson County Central Invitational Saturday, Dec. 10.



Greg Hoogeveen photos/1208 LHS BHOC Hein

Defenseman Kalad Hein lays out a Two Rivers opponent in the second period Nov. 29. Both teams traded goals to end the game in an overtime tie, 2-2.

Cardinal boys' hockey team wins 2, ties 1

By Greg Hoogeveen

The Luverne boys' hockey team opened their season with two wins and a tie this past week.

The Cardinals traveled to Marshall for a 5-3 win over the Tigers on Tuesday, Nov. 29. They hosted Two Rivers Friday, Dec. 2, for a game that ended in a 2-2 tie.

The LHS boys wrapped up their weekend with an 11-1 victory over Waseca at home Saturday, Dec. 3.

The Cardinals boys, now 2-0-1 for the season, will play New Ulm on the road Friday, Dec. 9, at New Ulm before hosting Win-dom on Dec. 13.

Luverne 11, Waseca 1

The Luverne boys'

hockey team beat conference rivals Waseca 11-1 Saturday, Dec. 3, at home, where the Cardinals posted two hat tricks — one by Brock Behrend and another by Patrick Kroski.

Waseca got the first goal of the game at 2:12 in the first period, but that's where the scoring stopped for the Bluejays.

Behrend scored his first of three goals at 7:11 with an assist from Kroski, and 42 seconds later Behrend scored again at 7:53 assisted by Maddux Domagala.

Not to be outdone, Kroski then scored two goals of his own at the

Boys Hockey, see page 10A

Lady Patriots' gritty play results in one win, one loss

By Greg Hoogeveen

The Hills-Beaver Creek girls' basketball team played two gritty games this week at home.

The Patriots lost to Russell-Tyler-Ruthton 54-33, Tuesday, Nov. 29, and regrouped to take down Edgerton at home 60-55 Friday, Dec. 2.

The H-BC girls were scheduled to play Murray County Central at home Tuesday, Dec. 6, and take on Adrian-Ellsworth Friday, Dec. 9, in Adrian.

H-BC 60, Edgerton 55

The Lady Patriots posted their first team win this season against Edgerton High School Friday, Dec. 2.

H-BC coach Dylan Gehrke described the contest as a game of two halves.

"Edgerton is a very physical and tough squad," Gehrke said.

"Their press gave us some troubles throughout the first half, and the girls could not get anything to drop in."

He said the Patriots dug themselves into a 14-point deficit at half-time, 24-10, but told the girls, "We need to stick together and grind this game out."

The Patriots started to get some shots to fall in the second half.

Juniors Layla Deelstra and Lanae Elbers led the charge, helping the Patriots trim the deficit and take the lead.

H-BC scored 50 second-half points, shooting 53 percent from the field and making 17 of 22 at the free throw line.

Four Patriots girls ended the game in double digits. Abbie Harris and Olivia Deelstra posted 15 points, Layla Deelstra made 13, Lanae Elbers contributed 12 and Brynn Rauk added another five points.

Rauk also grabbed nine rebounds and four steals. Harris was 6 for 6 at the free-throw line.



Greg Hoogeveen photos/1208 HBC GBB Deelstra

Sophomore Emma Deelstra drives the lane Dec. 2 in H-BC's win against Edgerton.

"Props to our girls for continuing to fight."

— Head Coach Dylan Gehrke

H-BC 33, RTR 54

The H-BC girls' basketball team hosted RTR for their home opener Tuesday, Nov. 29.

H-BC played tough but found themselves behind early 28-9 to end the first half.

"We battled throughout most of the first half. It was 16-9 and RTR ended up going on a 12-0 run to end the half," Gehrke said, adding that H-BC had ample shot opportunities throughout the game but couldn't get them to drop.

"Props to our girls for continuing to fight," he said.

Lady Pates, see page 9A

LHS girls' hockey team records sixth straight win

By Greg Hoogeveen

The Luverne girls' hockey team posted two shutouts this past week against conference opponents in the Blue Mound Ice Arena.

Luverne blanked Marshall 3-0 at home Tuesday, Nov. 29, and outshot Waseca 6-0 on home ice Saturday, Dec. 3.

The Cardinals, now 6-0 for the season, were scheduled to host Austin Tuesday, Dec. 6, and travel to Mankato Saturday, Dec. 10. They'll host Minnesota River Dec. 16.

Luverne 6, Waseca 0

The Cardinals had no trouble taking down conference rival Waseca 6-0 Saturday, Dec. 3, at home.

Luverne got out to an early lead in the first period with a goal at 4:06 by Ellie Van Batavia assisted by her big sister, Kamryn Van Batavia, and Payton Behr.

Behr added a second goal at 9:19 with an assist by Kamryn Van Batavia.

Kamryn Van Batavia closed the period with another goal at 16:36.

In the second period Greta McClure netted the first of her two goals at 12:13 assisted by Izzy Steensma and Mallory Nelson.

In the third period McClure got her second goal of the night at 10:23 assisted by Steensma.

Kamryn Van Batavia also got her second goal in the third period at 11:55 assisted by Behr.



Greg Hoogeveen photos/1208 LHS GHOC Nelson

Above, senior Mallory Nelson keeps the puck in play with a slapshot toward the goal Nov. 29 against rival Marshall.

Left, sophomore Payton Behr takes a shot at the Marshall goalie Nov. 29 in Marshall.

Luverne overpowered Waseca on the ice, allowing only two shots on Luverne's goalie, Mallory Von Tersch, the entire game.

The Cardinals hammered Waseca's goalie, Illamay Draheim with 57 shots.

Luverne 3, Marshall 0

The Cardinal girls took down conference rival Marshall 3-0 Tuesday, Nov. 29, in Luverne.

Both team played solid defense and tried to create shooting opportunities on the opposing goalie.

The two teams were scoreless until halfway through the second period.

At 10:04 in Period 2, Behr finally beat Marshall goalie Bella Deutz on a power-play to score the first goal with an assist by Kamryn Van Batavia.

At the 7:19 mark in the third period, Kamryn Van Batavia posted her 13th goal of the season, beating the Marshall goaltender with an assist from Payton Behr to put Luverne ahead 2-0.

In the third period with about five minutes left in the game, the Tigers pulled their goalie to get an extra attacker.

However, with 4:44 left in the game, Behr, assisted by Kamryn Van Batavia and Steensma, sneaked an empty net goal to clinch the 3-0 win.

Luverne goalie Von Tersch blocked 18 Marshall shot attempts. Luverne had 33 shots on goal.

Luverne girls basketball team starts 2022-23 season with two wins

By Greg Hoogeveen

The Luverne girls' basketball team defeated Edgerton Thursday, Dec. 1, and Southwest Christian Monday, Dec. 5, to start the season 2-0.

The Cardinals are scheduled to host Pipestone Friday, Dec. 9 and then travel to Jackson County Central Tuesday, Dec. 13.

Luverne 60, Edgerton 24

The Cardinal girls' basketball team won on the road against Edgerton Monday, Dec. 5.

"Overall, it wasn't our best game, but we will use it as a learning experience," said coach TJ Newgard.

The first half was riddled with missed shots and turnovers by both teams.

"We did not do a good job of finishing around the rim, especially when there was any sort of contact," Newgard said.

At the end of the first half Luverne led the Dutchmen 36-11.

The second half was played much like the first, with both teams struggling to score and getting into foul trouble.

Kira John and Elizabeth Wagner played well, with Wagner posting 14 points, 12 rebounds and 7 steals and John contributing 21 points and 6 rebounds.



Greg Hoogeveen photos/1208 LHS GBB Kira

Junior Kira John shoots over a Southwest Christian defender Dec. 1 in Luverne.

"Right now we are turning the ball over far too much and need to value each possession," Newgard said after the game.

"We are still looking for more depth in games like this. We need girls to come in and contribute positive minutes on a consistent basis."

Luverne 65, Southwest Christian 39

The Luverne girls' basketball team opened their 2022-23 season at home defeating Southwest Christian 65-39 Thursday, Dec. 1

The Cardinals were able to move the ball



Greg Hoogeveen photos/1208 LHS GBB Wagners

Senior sisters Christina and Elizabeth Wagner team up to pass the ball inside against the Eagles during the home game Dec. 1. Christina scored a total of 12 points and Elizabeth scored 21 points.

around on offense and keep defensive pressure on the Eagles in the first half.

Luverne went on to lead Southwest Christian 30-26 at the break and pulled away in the second half, defeating the Eagles 65-39.

Elizabeth Wagner led the team scoring with 21 points. Christina Wagner assisted with 12 points, and Sarah Stegenga posted 8 points.

Eight other Cardinal girls contributed in scoring throughout the game.

Lady Pates/continued from 8A

In the second half H-BC cut the lead to 15 with a chance at a scoring run but couldn't capitalize on the momentum.

The Patriots played with RTR during the second half, 24-26, but ended up losing in the final minutes of the game 54-33.

Gehrke said he was pleased with his team's performance and strong second half play.

"We just need to work on putting two halves together," he said.

Elbers led the Patriots with a total of nine points, nine rebounds, two steals and five blocked shots.

Defensively, Olivia Deelstra helped out with 11 total rebounds, one steal and two blocked shots.



Greg Hoogeveen photos/1208 HBC GBB Steinhoff

Junior forward Larissa Steinhoff shoots from outside the 3-point line Nov. 29 in the game against Russell Tyler Ruthton. She made six points, three rebounds and three steals in the game.

Here

FOR YOUR HEALTH

IN LUVERNE

When you need care, you want to know it's close to where you live, work and play. That's why Sanford Health provides expert primary and specialty care right where you call home. Visit your local Sanford Health clinic today to get to know a provider who cares in your community.

Call (507) 283-4476 to make an appointment.

Sanford Luverne Clinic
1601 Sioux Valley Drive
Luverne, MN

SANFORD
HEALTH

249-605-766 5/22



Greg Hoogeveen photos/1208 LHSBBB DeBeer

LHS junior Gavin DeBeer goes airborne against the Eagles guard Aidan Schaap to draw the foul Dec. 1 in Luverne. DeBeer led the scoring with 17 points and 6 rebounds.

Cardinal boys' basketball team drops home opener

By Greg Hoogeveen

The Luverne High School boys' basketball team opened the 2022-23 season at home losing to Southwest Minnesota Christian 75-46 Thursday, Dec. 1.

The Cardinals started out slow and were not able to catch up in the contest where the LHS shots failed to fall and the Eagles were able to win the battles in the paint.

The Eagles led by 10 points in the first half with solid play inside,

and they were able to outrebound Luverne both halves with 53 compared with Luverne's 24.

For Luverne, Gavin DeBeer led with 17 points, Carter Sehr had 12 points, Gannon Ahrendt had 11 points and two blocked shots, and Riley Sneller scored six.

DeBeer led the Cardinals with six rebounds. Ja'Shon Winter had four, and Cowell, Sehr and Elijah Woodley contributed three rebounds each.

The Cardinals led in

steals with 12 (Southwest Christian had eight), and posted a free-throw percentage of 33 percent compared with the Eagles' 25 percent.

But that wasn't going to be enough to offset Southwest Christian's offensive pressure, and the Cardinals fell 75-46.

The Cardinals were scheduled to play the next two games on the road, meeting the Dutchmen in Edgerton Monday, Dec. 5, and the Arrows in Pipestone Friday, Dec. 9.



Greg Hoogeveen photos/1208 LHS BHOC Sudenga

Junior Owen Sudenga skated by several opponents to shoot a wrist shot past the Marshall goalie Nov. 29. Sudenga ended the game with two goals in Luverne's 5-3 win at the Blue Mound Arena.

Boys' Hockey/continued from 8A

13-minute mark of the first period and added another at 14:40 assisted by Sage Viessman.

Luverne closed the first period with a 4-1 lead.

In the second period Tucker Dammann scored a shorthanded goal at 3:17 followed by another from Kroski during a Bluejays penalty at 4:33. Behrend scored his third goal assisted by Kroski and Owen Sudenga at 9:40.

Domagala scored at 11:22 assisted by Ethan Langseth. And at 13:06 Brady Bork scored with an assist by Sudenga.

Kroski got his fourth goal unassisted at 13:45. Dammann scored again, his second goal at 16:45, to close out Luverne's 11-point scoring run in the second period.

The two teams skated to a scoreless third period to end the game at 11-1, Luverne.

Cardinals' goalie Tyler Arends stopped 18 of 19 Waseca shots in the game. Luverne registered 47 shots on goal.

Luverne 2, Two Rivers 2

The Cardinals tied with Two Rivers 2-2 Friday, Dec. 2, in the Blue Mound Ice Arena.

The Warriors opened the scoring late in the first period at 15:45 when the puck deflected past Cardinal goalie Arends.

Behrend scored a shorthanded goal in the second period at 9:12 with an assist from Kroski, putting the score at 1-1 after two periods.

Luverne and Two Rivers again traded goals in the third period.

The Warriors scored at 3:32 taking the lead 2-1. Luverne at scored at 14:24 with a power play goalie beater from Kroski assisted by Gavin Reisch and Sudenga.

This led to overtime play with neither Luverne or Two Rivers being able to capitalize on the extra eight minutes of play.

Cardinals' goalie Tyler Arends stopped 33 of 35 Two Rivers shots in the game. Luverne placed 41 shots on goal.

Luverne 5, Marshall 3

The Cardinals opened their 2022-23 season on the road Tuesday, Nov. 29, by beating Marshall 5-3.

The Tigers posted two goals late in the first period and then again early in the second. However, Luverne scored the next four goals on power plays.

Sudenga scored at 13:27 assisted by Blaik Bork and Kroski.

Domagala scored at 14:03 assisted by Kroski and Behrend.

Behrend scored at 15:18 assisted by Bork and Kroski.

Sudenga scored at 15:47 assisted by Kroski and Behrend.

The third period's only score was from Luverne's Behrend at 15:42 assisted by Kroski and Henry Hartquist, with an empty net shot at even strength when Marshall pulled their goalie for an extra attacker. Luverne was able to stop any scoring.

Cardinals' goalie Tyler Arends stopped 24 of 27 Two Rivers shots in the game. Luverne placed 33 shots on goal.

Oh, what a night!

By Scott Rall

Outdoors columnist

I had the Black Pack Pheasant Attack group, (four seasoned black Labradors ranging in age from 2-11 years), out one afternoon this week, and man, was it an adventure!

I invited a friend who was in Nobles County for the week, and we made plans to try a pincher move on what is now very educated pheasants.

He went in from one end and I approached from the other. You can only do this move with two experienced hunters that you have some experience with, because if it works out as planned, you end up trapping the birds between the two of you.

Only after the birds have taken wing and moved off to the side in one direction or another can either hunter actually fire the gun safely.

Well, before we got close to one another, he had already harvested his two Minnesota roosters. I, on the other hand, had just missed a lay-up. A lay-up is an easy shot when the bird originates



within 20 yards of me and is flushed by one of my dogs. I don't miss this kind of shot very often, but when I do, it screws with my head.

We met in the middle, and he decided to take his dog and wander back to the truck. I continued to work my way around in some great habitat, flushing one hen right after another.

There is one spot on this parcel that is normally good for a bird, and it allows the hunter to work toward a big bend in a modest creek. The birds run ahead until they have no place left to run and have to take wing.

As we neared the creek, one of my dogs went on point. Most Labradors are

not pointing dogs, but my big linebacker dog Sarge will point on occasion. As the other three were quartering back and forth, I saw Sarge had entered a little plum thicket and was standing like a statue. I figured this could be my chance to redeem myself after the earlier easy shot miss.

As I eased my way closer, he pounced, and what happened next was not what I expected. I figured a great big, full-color rooster was about to erupt, but what I got was a dog with a big mouth full of fur.

Sarge was just as proud as punch as he held on to a completely alive, hissing and growling opossum. He

brought it back to me and sat there at heel like some sort of proud papa. I grabbed it by the tail and told him to drop, and Sarge told me to go jump into a lake. I imagine he was telling himself that it is so rare that I get a creature like this I will just hold on to it for as long as I please.

It took some coaxing, but a little training collar incentive and he finally dropped it. Once I had it clear, I was going to dispatch it. Sarge had removed most of the life in it by now, and as I contemplated my next move, one of the other three dogs had just flushed a great big rooster about 20 yards ahead of me. With a gun in one hand and opossum in the other, there

was no way I was going to get a gun on that bird, and he made his easy escape. I pitched the now waning mammal into the grass, and as I did so, yet another rooster flushed at the very end of gun range.

I made a great shot and piled up that bird, and 30 seconds later I had one dog with a rooster and a second dog, not Sarge, with the same opossum. If it was fun for Sarge, it just had to be as much fun for Ghost.

Now I've hunted all of my dogs the same for north of 15 years. They all know their job and stay close. It is the most satisfying endeavor to be able to do so with a high level of control, and in most cases with some pretty great hunting outcomes.

If you would have seen me on this day, you would have bet your IRA on the fact that I had taken up pheasant hunting about three days earlier. Sitting on the tailgate of the truck with the one beer I brought and one beautiful bird and reliving my last 45

minutes are part of what makes an outdoor lifestyle so great.

I cannot imagine a life without a lot of dogs in it. This evening made crystal clear one of my famous sayings: One of the few things that can impress the daylight out of you and then disappoint the daylight out of you two minutes later is a dog.

I took this afternoon hunt as a success. Not because I shot so well – I did not – not because of the greatest dog work I have ever experienced – it was not – but just for the humor of it all and the look on Sarge's face and how proud he was with his big, furry prize.

Dog training is never done and this night was living proof of that.

Scott Rall, Worthington, is a habitat conservationist, avid hunting and fishing enthusiast and is president of Nobles County Pheasants Forever. He can be reached at scottarall@gmail.com, or on Twitter @habitat champion.

KEEP IN MIND! We Have Early Deadlines

CHRISTMAS
Star Herald

December 29 Edition
Deadline for advertising will be
Thursday, Dec. 22 by 10 am

NEW YEAR'S
Star Herald

January 5 Edition
Deadline for advertising will be
Thursday, Dec. 29 by 10 am

OUR OFFICE WILL BE CLOSED Monday, December 26 and Monday, January 2

Star Herald CHURCH

December 8, 2022 Page 11A

St. Catherine Catholic Church
203 E. Brown St., Luverne
St. Catherine Ph. 283-8502; www.stscl.org
Monsignor Gerald Kosse, Pastor

Sundays 8:30 a.m. Mass. Public Mass will be celebrated at FULL capacity in the church. Masses: 9 a.m. Wednesdays, 10 a.m. Friday at the nursing homes – check the bulletin. All Sunday masses will be live streamed on Facebook at https://www.facebook.com/pg/stoclouverne/videos/. Visit www.stscl.org for more information.

Luverne Christian Reformed Church
605 N. Estey St., Luverne
Office Ph. 283-8482; Prayer Line Ph. 449-5982
www.luverneccr.com — office@luverneccr.com

Sundays 9:30 a.m. Worship service. 6:30 p.m. Evening worship service. We are streaming Sunday services live on YouTube at 9:30 a.m. and 6:30 p.m. Send him a friend request if you're not connected. You may also visit our website for delayed broadcasts. Also our services are on local cable TV at 5:30 p.m. on Wednesdays and at 6:30 p.m. on Thursdays. In all circumstances, may we joyfully declare: "Our help is in the name of the Lord, the Maker of heaven and earth." Psalm 124:8.

First Baptist Church
103 N. Jackson St., P.O. Box 975, Luverne
Ph. 283-4091; email: fbcluv@iw.net — www.fbcluverne.org
Walt Moser, Pastor

Sundays, 10:30 a.m. In-person worship service. Service is also on Facebook Live at 10:30 a.m.

Grace Lutheran Church
500 N. Kniss Ave., Luverne
Ph. 507-283-4431; www.graceluverne.org — graceluverne@iw.net
Dave Christenson, Interim Pastor

Thursday, Dec. 8: 8:30 p.m. Missions in Action. Saturday, Dec. 10: 2 p.m. David Nelson Ordination Service. Sunday, Dec. 11: 9 a.m. Worship service with Sunday School Christmas program. 10 a.m. Coffee Fellowship. 10 a.m. Sunday School and Drums. 6-7:30 p.m. 9th-12th grade Christmas Party. 6:30 p.m. Transitional Task Force meeting. Tuesday, Dec. 13: 9 a.m. Staff meeting. 6:45 p.m. Ministry meetings. 8 p.m. PPC meeting. Wednesday, Dec. 14: 7 a.m. Men's Bible Study. 6:15 p.m. 9th Grade confirmation class. 7 p.m. Advent Service. 7:45 p.m. Voices of Grace rehearsal. Online, TV and Radio Worship options are available. Online worship: Sundays 9 a.m. at www.graceluverne.org, click Worship tab; or Facebook page at Grace Lutheran ELCA, Luverne. TV: Vast Channel 3 Mondays at 4:30 p.m. and Fridays at 10 a.m. Radio: KQAD-AM Radio Sundays at 8:15 a.m.

Bethany Lutheran Church
720 N. Kniss Ave., Luverne
Ph. 507-283-4571 or 605-215-9834
Andrew Palmquist, Pastor

Sundays, 9 a.m. Sunday School and Bible class. 10:15 a.m. Worship service; worship online as well (at els.org). Tuesdays, 6:30 p.m. Zoom Bible study. Wednesdays, 7 p.m. Advent Vespers. See our Facebook page, Bethany Lutheran Church (Luverne) for other classes and events.

American Reformed Church
304 N. Fairview Dr., Luverne
Ph. 507-283-8600; email: office@arcluverne.org

Thursday, Dec. 8: School Youth Retreat. Friday, Dec. 9: 6:30 a.m. Community Men's Bible Study. Sunday, Dec. 11: 9:30 a.m. Worship Service with Holy Communion. 10:50 a.m. Sunday School. 10:50 a.m.-1:20 p.m. Christmas program practice. 6 p.m. Sunday School Christmas program. Tuesday, Dec. 13: 12 p.m. Staff meeting. 7 p.m. Consistory meeting. Wednesday, Dec. 14: 5:30 p.m. Midweek Meal. 6:30 p.m. Pioneer Clubs and Youth Groups. Services are also broadcast on Vast Channel 3 on Mondays at 6 p.m. and Wednesdays at 4 p.m. DVD's available upon request. To stay up to date on announcements, follow us on Facebook and Instagram @ arcluverne.

Rock River Community Church
1075 110th Ave., Luverne
Ph. 507-283-9070; email: info@rockrivercommunity.church
Bob Junak, Pastor

Come as you are—Sundays @ 10 a.m.: Main Service. Kids church age 3-6th grade—Nursery. Wednesdays @ 6:30 p.m. Midweek Service—Kids age 3-6th grade.

United Methodist Church
109 N. Freeman Ave., Luverne
Ph. 283-4529

Thursday, Dec. 8: 7 p.m. AA meeting. Saturday, Dec. 10: 8 p.m. AA meeting. Sunday, Dec. 11: 9 a.m. Adult Sunday school. 9:15 a.m. Coffee. 10:30 a.m. Worship Service with Holy Communion. Prayer Warriors after service. 4:30 p.m. Genesis/Revelation Bible Study. Tuesday, Dec. 13: 1:30 p.m. Sewn in Faith. 7 p.m. Scouts. Wednesday, Dec. 14: 9 a.m. Open Prayer Chapel. 6:15 p.m. FUEL. 6:30 p.m. confirmation. 8 p.m. AA meeting. Thursday, Dec. 15: 7 p.m. AA meeting. Live streamed on Facebook and radio.

First Presbyterian Church
302 Central Lane, Luverne
Ph. 283-4787; email: Firstpc@iw.net

Sunday, Dec. 11: 9 a.m. Adult Sunday school. 10:15 a.m. Worship service. Youth Sunday school during worship service. In-person Worship service

and live on Facebook. Our Facebook page can be found under First Presbyterian Church of Luverne. We are also on the local Luverne cable station at 10 a.m. and 6 p.m. on Tuesdays and 10 a.m. on Thursdays.

St. John Lutheran Church
803 N. Cedar St., Luverne
Ph. 283-2316; email: stjoh@iw.net
www.stjohne Lutheranluverne.org

Saturday, Dec. 10: 5:30 p.m. Saturday Worship. Sunday, Dec. 11: 9 p.m. Worship Service. 10:15 a.m. Adult Bible Study. 10:15 a.m. Sunday School. Monday, Dec. 12: 1 p.m. Quilters meet. 7:30 p.m. Men's Club. Tuesday, Dec. 13: 7 p.m. Women's Missionary. Wednesday, Dec. 14: 9 a.m. Bible Study. 6 p.m. Advent Vespers. 6:30 p.m. Catechesis Class. Kids for Christ. 7 p.m. Senior choir. 7:30 p.m. Youth Group. Services will be available on the Vast Channel 3 Sunday and online at the city website, cityofluverne.org.

Living Rock Church
500 E. Main St., Luverne
Ph. 449-0057; www.livingrockswmn.org
Josh Hayden, Pastor

New Life Celebration Church
101 W. Maple, Luverne
Ph. (605) 368-1924; email: newlifecelebration@gmail.com
Food mission every third Thursday.

Zion Evangelical Lutheran Church
305 E. 2nd St., P.O. Box 36, Hardwick
Ph. (507) 669-2855; zionoffice@alliancecom.net
Jesse Baker, Pastor

Sunday, Dec. 11: 9 a.m. Worship service. 10:15 a.m. Sunday School. 10:30 a.m. Bible study. Worship service on Luverne cable at 3:30 p.m. every Thursday and Friday.

First Lutheran Church
300 Maple St., Valley Springs, S.D.
Ph. (605) 757-6662 — firstpalisade@alliancecom.net
Mark Eliason, Pastor

Sunday, Dec. 11: 10:30 a.m. Sunday School kids Christmas program at First Lutheran Church.. All are welcome. We Are ONLINE! Facebook: @FirstLutheranValley Springs; YouTube: FirstPalisadeLutheran-Parish.

Palisade Lutheran Church
211 121st St., Garretson, S.D.
Ph. (507) 597-6257 — palisadechurch@alliancecom.net
www.palisadelutheran.org
Mark Eliason, Pastor

Thursday, Dec. 8: 1:30 p.m. WELCA meeting. 7 p.m. Palisade council meeting. Sunday, Dec. 11: 9 a.m. Sunday School kids Christmas program at Palisade Lutheran Church. Wednesday, Dec. 14: 7 p.m. Holden Evening Prayer Service for Advent Season at Palisade. (Dec. 14 and 21). We Are ONLINE! Facebook: @PalisadeLC; YouTube: FirstPalisadeLutheranParish.

First Presbyterian Church
201 S. 3rd St., P.O. Box 73, Beaver Creek
Ph. 507-935-5025
email: lori.firstpres@gmail.com

Sundays, 9:30 a.m. Worship Service. Second Tuesday of each month, 7 p.m. Session meeting.

Magnolia United Methodist Church
501 E. Luverne St., Magnolia
Ph. 605-215-3429
email: magnoliannumc@gmail.com
Nancy Manning, Pastor

Sunday, 9 a.m., in-person with livestream available on the church's Facebook site.

Steen Reformed Church
112 W. Church Ave., Steen
Ph. 855-2336
Jeremy Wiersema, Pastor

Sunday, 9:30 a.m. and 6 p.m. Worship service in-person with livestream available on Facebook and YouTube. Radio worship on KQAD Sundays at 9:30 a.m.

Bethlehem Lutheran Church
112 N. Main St., Hills
Ph. 962-3270 / bethlehemofhills@gmail.com
Nita Parker, Pastor

Sunday, Dec. 11: 9 a.m. Worship at Tuff Chapel. 9 a.m. Sunday school. 10 a.m. Worship Service. Worship will be streamed live to Facebook at Bethlehem of Hills. You can find more info on our website blchills.org.

Hills United Reformed Church
410 S. Central Ave., Hills
Office Ph. 962-3254
hillsurc@alliancecom.net
Alan Camarige, Pastor

I don't understand it, but I'm glad it's for you and me!

Imagine putting a cute guinea pig (a favorite pet in our house!) down in an advanced math class and trying to teach the "piggie" a complex formula that was written on the whiteboard. It would be pretty difficult, if not impossible, for the pet to understand the formula. It simply would be beyond its comprehension.

Like that furry rodent, there are quite a few things in life that we have difficulty understanding. For example, where does color come from? How much air is in the earth's atmosphere? How much water is contained in the oceans? What is on the other side of a black hole? Or how large is the universe?

There is something else that we cannot fully understand, and yet it is also very wonderful—God's love and peace.

You see, sadly, by nature we are enemies of God. We are born and conceived in sin. We desire and carry out actions which God tells us not to do. And we often ignore that which God wants us to do. These sinful actions, desires, attitudes, and words all warrant God's anger and demand punishment.

Here is the part we cannot understand — despite people's enmity and sin toward God, he continued to love us anyway. God carried out an act of love that was so awesome, so amazing, it is beyond our understanding.

The Almighty God allowed his one and only Son to become one of us, yet without sin. This is the great mystery of the incarnation. This is what we celebrate at Christmas! Jesus, the Christ-child is Immanuel, "God with us" in human flesh. He came to be our substitute, our brother, our Savior. He cried for us, experienced hunger, hurt, and tears for us, he even bled for us.

BUILT ON A ROCK

By Pastor Andrew Palmquist, Bethany Lutheran Church, Luverne

Only this God-man Jesus could establish peace between God and humans, and the cost would be enormous — his life. It transcends our understanding, yet as a grown man, on Good Friday, Christ, though perfectly innocent, suffered and died on the cross to save sinners — you and me!

Then just as he promised, Jesus arose from the dead three days later, proving that you and I have indeed been reconciled to God. We have true peace. In Christ you are no longer God's enemy, but his dearly loved child!

What is more, God the Holy Spirit provides you with faith to trust in what your Savior has accomplished! He does this through his Word and blessed sacraments. Our peace is strong and certain, not because it is based on human reasoning or intelligence, but because it is established and provided by our loving heavenly Father.

You and I cannot fully comprehend this wonderful peace from God, yet we believe and know that it is true, for our Lord Jesus has assured us that we have a place reserved for us in the glories of heaven! Join us in God's House this Advent and Christmas as we await the coming of our Savior-King!

"The peace of God, which transcends all understanding, will guard your hearts and your minds in Christ Jesus." Philip-pians 4:7

These weekly church page messages are contributed to God's Work through the Church and by these concerned and responsible citizens & businesses:

Call Rick to place your ad!
283-2333

Read us online!

Rock County
STAR HERALD
www.Star-Herald.com

Trust in Him



Papik MOTORS
283-9171
PAPIK.COM
Luverne • Rock Rapids • Sibley

SECURITY SAVINGS BANK
bankwithssb.com 507.449.6000
Member FDIC Luverne, MN

HSS HILLS STAINLESS STEEL & EQUIPMENT CO., INC.
506 W. Koehn, P.O. Box 987, Luverne, MN
PHONE 507-283-4405
Church is Important - Please Attend!

HARTQUIST
Funeral and Cremation Services
Pipestone • Luverne • Lake Benton • Jasper • Tyler
www.HartquistFuneral.com

Buffalo Ridge INSURANCE
507-283-2381 www.buffaloridgins.com E-mail: info@buffaloridgins.com

Pizza Ranch
110 E Main, Luverne 507-283-2379

McClure Electric
Alan M. Aanenson, owner
Farm, Home & Commercial Wiring
Luverne, MN Phone 507-283-4716

CWG Business Insurance.
Tri-State Region Period!

TUFF MEMORIAL HOME
A HOME WITH A HEART!
Hills, MN • 507-962-3275

MANLEY TIRE & OIL SERVICE
Manley Minnesota
1-800-615-3704
Open six days a week - Closed on Sundays
To God be the Glory.

MINNWEST BANK
116 East Main Street • Luverne • 507-283-2366
Hwy. 75 • 800 South Kniss • Luverne • 507-283-9131
www.minnwestbank.com • Member FDIC • MoneyLine 888-616 BANK

Luverne ANNOUNCER

Advertise Here

First Farmers & Merchants
We believe in you.
Member FDIC. And the community.
303 E. Main, Luverne, MN
507-283-4463 | www.fmbank.com

Star Herald PUBLIC NOTICES

Community Transit of UCAP seeks quotes

Legal Notice

Request for Quotes: Community Transit of United Community Action Partnership is seeking quotes for the 2023 year from qualified vendors for Maintenance on their Public Transit Buses. Maintenance requirements can be received by contacting 507-537-7628 ext. 1126. Quotes will be accepted until December 30th, 2023, at 4:30 p.m. They can be mailed or dropped off at UCAP, 1400 South Saratoga Street, Marshall, MN 56258. ATTN: Randy Seiler. UCAP reserves the right to reject any of all quotations and is a non-profit organization exempt from sales tax. (12-08)

Kristi's assumes name

MINNESOTA SECRETARY OF STATE CERTIFICATE OF ASSUMED NAME MINNESOTA STATUTES, CHAPTER 333

The filing of an assumed name does not provide a user with exclusive rights to that name. The filing is required for consumer protection in order to enable consumers to be able to identify the true ownership of a business.

ASSUMED NAME: Kristi's
PRINCIPAL PLACE OF BUSINESS:
211 E. Main Street, Luverne, MN 56156 USA
NAMEHOLDER(S):
Name: Kristi K Knutson
Address: 204 W. Main, Luverne, MN 56156 USA

If you submit an attachment, it will be incorporated into this document. If the attachment conflicts with the information specifically set forth in this document, this document supersedes the data referenced in the attachment.

By typing my name, I, the undersigned, certify that I am signing this document as the person whose signature is required, or as agent of the person(s) whose signature would be required who has authorized me to sign this document on his/her behalf, or in both capacities. I further certify that I have completed all required fields, and that the information in this document is true and correct and in compliance with the applicable chapter of Minnesota Statutes. I understand that by signing this document I am subject to the penalties of perjury as set forth in Section 609.48 as if I had signed this document under oath.

Signature : /s/ Kristi Knutson
MAILING ADDRESS: None Provided
EMAIL ADDRESS FOR OFFICIAL NOTICES: kristiknutson@gmail.com
(12-01, 12-08)

Holtrop probate

STATE OF MINNESOTA PROBATE COURT
COUNTY OF ROCK DISTRICT COURT
PROBATE DIVISION

In Re:Estate of Court File No. 67-PR-22-281
Francis C. Holtrop, a/k/a Francis Colleen Holtrop,
Deceased Amended ORDER AND NOTICE OF HEARING
FOR FORMAL PROBATE OF WILL AND
APPOINTMENT OF PERSONAL REPRESENTATIVE
IN SUPERVISED ADMINISTRATION
AND NOTICE TO CREDITORS

TO ALL INTERESTED PERSONS AND CREDITORS:

It is Ordered and Notice is hereby given that on the 9th day of January, 2023, at 8:30 O'clock a.m., a hearing will be held in the above named Court at Rock County Courthouse, Luverne, Minnesota, via Zoom, for the formal probate of an instrument purporting to be the will of the above named deceased, dated February 18, 1997, and for the appointment of Constance Jean Wiertzema whose address is 675 State Hwy. 270, Hills, MN 56138, as personal representative of the estate of the above named decedent in supervised administration, and that any objections thereto must be filed with the Court. That, if proper, and no objections are filed, said personal representative will be appointed to administer the estate, to collect all assets, pay all legal debts, claims, taxes and expenses, and sell real and personal property, and do all necessary acts for the estate. Upon completion of the administration, the representative shall file a final account for the allowance and shall distribute the estate to the persons thereto entitled as ordered by the Court, and close the estate.

Notice is further given that ALL CREDITORS having claims against said estate are required to present the same to said personal representatives or to the Court Administrator within four months after the date of this notice or said claims will be barred.

Date Filed: November 29, 2022

/s/ Terry S. Vajrt
District Court Judge

Jennifer L. Eisma-Reinke
Attorney for Petitioner
Eisma and Eisma
130 East Main
Luverne, MN 56156
(507) 283-4828
I.D. #389457

/s/ Natalie Reisch
Court Administrator

(COURT SEAL)

(12-08, 12-15)

Mortgage foreclosure sale set for Feb. 2, 2023

NOTICE OF MORTGAGE FORECLOSURE SALE
THE RIGHT TO VERIFICATION OF THE DEBT AND IDENTITY OF THE ORIGINAL CREDITOR WITHIN THE TIME PROVIDED BY LAW IS NOT AFFECTED BY THIS ACTION.

NOTICE IS HEREBY GIVEN: That default has occurred in the conditions of the following described mortgage:

DATE OF MORTGAGE: December 8, 2022
ORIGINAL PRINCIPAL AMOUNT OF MORTGAGE: \$154,141.00
MORTGAGOR(S): Ryan L Jacobsma and Brittany A Jacobsma, husband and wife
MORTGAGEE: Mortgage Electronic Registration Systems, Inc., as nominee for Movement Mortgage, LLC

DATE AND PLACE OF RECORDING:
DATE AND PLACE OF FILING: Recorded on December 30, 2020 as Document Number 198890 in the Office of the County Recorder of Rock County, Minnesota.

ASSIGNMENTS OF MORTGAGE: Assigned to: Movement Mortgage, LLC by assignment recorded on August 31, 2022 as Document Number 203052 in the Office of the County Recorder of Rock County, Minnesota.

LEGAL DESCRIPTION OF PROPERTY: The North Fifty (N.50) feet of Eight (8) in Block Six (6) in P.J. Kniss Addition to the Village (now City) of Luverne, Min-

nesota.
Rock County, Minnesota.
STREET ADDRESS OF PROPERTY: 125 S WEST PARK STREET, LUVERNE, MN 56156
COUNTY IN WHICH PROPERTY IS LOCATED: Rock County, Minnesota.
THE AMOUNT CLAIMED TO BE DUE ON THE MORTGAGE ON THE DATE OF THE NOTICE: \$155,108.34
TRANSACTION AGENT: Mortgage Electronic Registration Systems, Inc.
NAME OF MORTGAGE ORIGINATOR: Movement Mortgage, LLC
RESIDENTIAL SERVICER: ServiceMac, LLC
TAX PARCEL IDENTIFICATION NUMBER: 20-1014-000
TRANSACTION AGENT'S MORTGAGE IDENTIFICATION NUMBER: 100670800032658734

THAT no action or proceeding has been instituted at law to recover the debt then remaining secured by such mortgage, or any part thereof, or, if the action or proceeding has been instituted, that the same has been discontinued, or that an execution upon the judgment rendered therein has been returned unsatisfied, in whole or in part.

PURSUANT, to the power of sale contained in said mortgage, the above described property will be sold by the Sheriff of said county as follows:

DATE AND TIME OF SALE: February 02, 2023 at 10:00 AM.
PLACE OF SALE: Rock County Sheriff's Office, 1000 N. Blue Mound Avenue, Luverne, MN 56156.

to pay the debt then secured by said mortgage and taxes, if any actually paid by the mortgagee, on the premises and the costs and disbursements allowed by law. The time allowed by law for redemption by said mortgagor(s), their personal representatives or assigns is six (6) months from the date of sale.

TIME AND DATE TO VACATE PROPERTY: Unless said mortgage is reinstated or the property redeemed, or unless the time for redemption is reduced by judicial order, you must vacate the premises by 11:59 p.m. on August 2, 2023.

THE TIME ALLOWED BY LAW FOR REDEMPTION BY THE MORTGAGOR, THE MORTGAGOR'S PERSONAL REPRESENTATIVES OR ASSIGNS, MAY BE REDUCED TO FIVE WEEKS IF A JUDICIAL ORDER IS ENTERED UNDER MINNESOTA STATUTES, SECTION 582.032, DETERMINING, AMONG OTHER THINGS, THAT THE MORTGAGED PREMISES ARE IMPROVED WITH A RESIDENTIAL DWELLING OF LESS THAN FIVE UNITS, ARE NOT PROPERTY USED IN AGRICULTURAL PRODUCTION, AND ARE ABANDONED.

MORTGAGOR(S) RELEASED FROM FINANCIAL OBLIGATION ON MORTGAGE: None
Dated: November 30, 2022

MOVEMENT MORTGAGE, LLC
Mortgagee

TROTT LAW, P.C.

By: /s/
N. Kibongni Fondungallah, Esq.
Samuel R. Coleman, Esq.
"Sung Woo Hong, Esq."
Attorneys for Mortgagee
25 Dale Street North
St. Paul, MN 55102
(651) 209-9760
(22-1244-FC01)

THIS IS A COMMUNICATION FROM A DEBT COLLECTOR.
(12-08, 12-15, 12-22, 12-29, 01-05, 01-12)

Division of School Finance 400 NE Stinson Blvd. Minneapolis, MN 55413		District Revenues and Expenditures Budget for Fiscal Year (FY) 2022 and FY 2023						ED-00110-45
General Information: Minnesota Statutes 2021, section 123B.10, requires that every school board shall publish the subject data of this report.								
District Name:	Hills-Beaver Creek Public School						District Number:	0671
Fund	FY 2022 Beginning Fund Balances	FY 2022 Actual Revenues and Transfers In	FY 2022 Actual Expenditures and Transfers Out	June 30, 2022 Actual Fund Balances	FY 2023 Budget Revenues and Transfers In	FY 2023 Budget Expenditures and Transfers Out	June 30, 2023 Projected Fund Balances	
General Fund/Restricted	\$ 964,645	\$ 646,648	\$ 670,700	\$ 940,593	\$ 549,495	\$ 559,594	\$ 930,494	
General Fund/Other	\$ 3,046,063	\$ 4,852,178	\$ 4,679,416	\$ 3,218,825	\$ 4,209,210	\$ 4,510,689	\$ 2,917,346	
Food Service Fund	\$ 214,016	\$ 272,733	\$ 236,450	\$ 250,299	\$ 170,700	\$ 273,689	\$ 147,310	
Community Service Fund	\$ 183,221	\$ 138,903	\$ 105,914	\$ 216,210	\$ 139,270	\$ 145,915	\$ 209,565	
Building Construction Fund	\$ -	\$ -	\$ -	\$ -	\$ -	\$ -	\$ -	
Debt Service Fund	\$ 160,504	\$ 648,261	\$ 660,114	\$ 148,651	\$ 642,259	\$ 658,439	\$ 132,471	
Trust Fund	\$ -	\$ -	\$ -	\$ -	\$ -	\$ -	\$ -	
Internal Service Fund	\$ -	\$ -	\$ -	\$ -	\$ -	\$ -	\$ -	
* OPEB Revocable Trust Fund	\$ -	\$ -	\$ -	\$ -	\$ -	\$ -	\$ -	
OPEB Irrevocable Trust Fund	\$ -	\$ -	\$ -	\$ -	\$ -	\$ -	\$ -	
OPEB Debt Service Fund	\$ -	\$ -	\$ -	\$ -	\$ -	\$ -	\$ -	
Total - All Funds	\$ 4,568,449	\$ 6,558,723	\$ 6,352,594	\$ 4,774,578	\$ 5,710,934	\$ 6,148,326	\$ 4,337,186	
Long-Term Debt		Current Statutory Operating Debt per Minnesota Statutes 2021, section 123B.81						
Outstanding July 1, 2021	\$ 8,074,478	Amount of General Fund Deficit, if any, in excess of 2.5% of expenditures 06/30/2022				\$ 0		
Plus: New Issues	\$ -							
Less: Redemmed Issues	\$ 372,835	Cost per student - Average Daily Membership (ADM) 06/30/2022						
Outstanding June 30, 2022	\$ 7,701,643	Total Operating Expenditures				\$ 5,400,278.43		
Short-Term Debt		FY 2022 Total ADM Served + Tuitioned Out ADM + Adjusted Extended ADM				354.81		
Certificates of Indebtedness	\$ -	FY 2022 Operating Cost per ADM				\$ 15,220.20		
Other Short-Term Indebtedness	\$ -							
<i>The complete budget may be inspected upon request to the superintendent.</i>								
Comments:								

* Other Post-Employment Benefits (OPEB)

(12-08)

LOCAL. DIGITAL. ADVERTISING.

170,000 monthly impressions!

Advertise YOUR business on 55" digital screens in 12 locations!

For more information contact:

Rick Peterson
507-290-0924 • bluemounddigital@gmail.com

Wyatt VanSteenberg
507-220-1994 • wyatt.bluemounddigital@gmail.com

507-283-2333 (Star Herald)



blue mound digital
Rock County STAR HERALD Luverne ANNOUNCER

EMPLOYMENT

Family and Children's Social Services Supervisor: Nobles County has an opening for a family and children's social service supervisor. Apply now for this exciting career opportunity! This position is responsible for the administration of the family and children's social services programs for the Community Services Department. Duties include, but are not limited to: supervising staff; directing activities; planning and developing budgets, and performing additional tasks as assigned. **QUALIFICATIONS:** Bachelor's degree with a minimum of four years' experience in public or private social work; or equivalent combination. Previous supervisory experience preferred. Must possess a valid State of Minnesota driver's license. Nobles County offers an excellent benefit package and an opportunity for occasional telecommuting! **APPLY TO:** Nobles County Administration Office. Visit our website at www.co.nobles.mn.us for application and to view full job description and benefit sheet. **Deadline: Open until filled, first review date December 16, 2022.** EEO/AA Employer (12.1-12.10)

CARDS OF THANKS

Thanks to everyone that added to our 50th anniversary fun, with old pictures, memories you shared, gifts, cards, calls, texts and visits. Special thanks to Amy, Jay-lee, Angi, Mike, Reagan and Alex. You have put the crazy in the past 50 years. Love ya!
LeRoy and Sue Van Klei
(12.8-12.10)

MISCELLANEOUS

HAVE A UNIQUE SERVICE OR BUSINESS? Get the word out to over 1.4 million households. Call WIDE AREA CLASSIFIEDS today, 507-359-7326. (tc)



Read
Recycle
Reuse

EMPLOYMENT

WE'RE HIRING GENERAL LABORER

FOR THE AREA'S PREMIER CONSTRUCTION COMPANY



- COMPETITIVE WAGES
- BENEFITS
- GREAT WORK ENVIRONMENT

CLEVERINGA
CONSTRUCTION, INC.

CALL 507-920-5631
IN OUR NEW OFFICES:
615 SOUTH KNISS AVE (HWY 75), LUVERNE MN 56156

APPLY NOW

EMPLOYMENT

Hills-Beaver Creek
Public Schools
OPEN POSITION

Grade 6-8 Math/Grade 8 Physical Science
Teacher Long Term Substitute
2022-2023 School Year (starting January 2023)

Position: Long Term Substitute 6-8 Mathematics and Middle Level Physical Science

- **Qualifications:** Current Minnesota 5-8 Math License and Grades 8 Physical Science or ability to obtain
- **Application Deadline:** Position open until filled.
- **Starting Date:** January 3, 2023

Apply To: Andrew Kellenberger, Principal, Hills-Beaver Creek Schools, PO Box 547, 301 N. Summit Ave, Hills, MN 56138 or email - a.kellenberger@isd671.net. Submit a letter of application, resume, copy of teaching license, transcripts, and three (3) current letters of reference

Location: Hills-Beaver Creek Secondary - Hills, MN

District Application: Submit a completed and signed copy of the district's classified employment application found on the district website at www.hbcopatriots.com under the employment tab.

Hills-Beaver Creek School District
301 N. Summit Avenue
PO Box 547
Hills, Minnesota 56138
Website:
www.hbcopatriots.com
Email:
a.kellenberger@isd671.net
Phone: (507) 962-3240

- An Equal Opportunity Employer -

EMPLOYMENT

HSI Habilitative Services, Inc.

We are hiring for Part-time and Full-time Caregiver positions in Luverne, MN. We have flexible schedules and currently looking to fill awake overnight and afternoon/evening positions. Our employees work with individuals with disabilities and mental health in group home settings. No experience or CNA required for Caregiver roles as we provide on the job training. Apply online today if you meet these basic requirements: 18 years of age or older, clear criminal background check, and valid DL with clean driving record (except for overnights). We pay \$15 and up depending on the location and FT benefits start at 30 hrs/wk. Now offering On-Demand Pay, access to your money anytime, no need to wait until pay day!

Apply online: SevitaCareers.com (search by Luverne)
Questions contact Krissi @ 978-209-1069

EMPLOYMENT

ROCK COUNTY SHERIFF'S OFFICE

Part-time /Full-time Dispatcher

The Rock County Administrator is now accepting applications for the position of **Dispatcher** in the Rock County Sheriff's Office until **December 22, 2022 at 5:00PM. Full-time and Part-Time positions are available.** Minimum qualifications are a High School diploma or equivalent with one year of work related experience. Applicants must possess excellent communication skills, have the ability to read a map and multi-task duties in a fast paced environment. The work is performed on a shift rotation basis and is a union position of Local Union No. 2558C. **Starting hourly wage will be \$20.62 - \$22.31 DOQ with additional compensation for overtime and shift differentials.** Rock County offers an excellent benefit package for the Full-Time position. All interested persons must complete a Rock County application form; for an application form and full job description, please go to https://www.co.rock.mn.us/job_opportunities/index.php. For additional questions, please contact the Rock County Administrator's Office at 507-283-5065 at the Rock County Courthouse in Luverne, Minnesota. Office hours are from 8:00 a.m. to 5:00 p.m., Monday through Friday or email susan.skattum@co.rock.mn.us.

An Equal Opportunity Employer

ROUTE DRIVERS WANTED Fuel/Propane Delivery & Service.

Great overtime potential, Class B, CDL Lic, Hazmat & tanker endorsement required. Competitive wage and excellent benefits including health & dental insurance, and a 401(k) plan.

Call Bill or Quay at
(952) 466-3720 or email
quayz@midcountycoop.com

MC Mid-COUNTY ENERGY
FUELS • PROPANE • LUBRICANTS
700 W. Lake, P.O. Box 177, Cologne, MN 55322

Advertise Today!
Call Rick or Wyatt 283-2333

Get the Star Herald Online
12 months \$46
24 Hour Access 99¢

Online + Print Edition
In County: 12 months \$88
Out of County*: 12 months \$115

Print Edition Only
In County: 12 months \$74
In County: 6 months \$54

Out of County*: 12 months \$91
Out of County*: 6 months \$68

Give the gift of your local Star Herald

mcAN
Minnesota Classified Advertising Network

HELP WANTED
FRITO LAY FLEET
TECHNICIAN, FARGO, ND
Go to FritoLayEmployment.com, enter requisition #355978. Frito-Lay Fleet Technicians are essential to our team because they work on our fleet vehicles and keep our drivers safe. Are you looking for a job at a company that rewards the mechanically gifted? Although you will start out working for Frito-Lay, this job can open the door to career opportunities with our parent company, PepsiCo. WHAT WE OFFER: INDUSTRY LEADING BENEFITS: Pay Rate \$28.90 up to \$37.29/hour rate based on experience, \$7,500 sign on bonus. First half at 90 days / Second half at 180 days, Medical, vision, dental, Mental Health, life, RX, LTD, STD, Financial Well-Being: Healthy Money & Retirement Counselors. Full benefits first day of full-time employment, 401K and pension, Work/Life Benefits: Maternity & Paternity leave, Child & Elder Care assistance, Tool & boot allowance, Uniforms provided, 10 paid holidays, Paid vacation after one full year, Company stock purchase plan, HSA, Tuition reimbursement, Company discounts: Auto & Home / Identity Theft / Mortgage / Group Legal / Services on various consumer goods, Matching charitable donations, Adoption / Fertility assistance.

WANTED TO BUY
WANTED:
ALL 1970S MOTORCYCLES
Running or not. Titled or not. Cash in exchange. Sell now while prices are high! Call Dan at 612/720-2142

BUYING AND SELLING
silver bars, silver dollars, rare coins, gold coins, gold jewelry, any gold-silver items, collector coins. Kuehl's Coins, Fairmont, Minnesota 507/235-3886

ADOPTION
CALIFORNIA COUPLE PROMISES baby loving home, full time mom, secure future, educational opportunities. Generous living expenses/relocation paid. Danielle/Ed 818/356-6981 or attorney 310/663-3467

MISCELLANEOUS
THE GENERAC PWRCELL a solar plus battery storage system. Save money, reduce your reliance on the grid, prepare for power outages and power your home. Full installation services available. \$0 Down financing option. Request a free, no obligation quote today. Call 888/913-5895

FREE HIGH-SPEED INTERNET
for those that qualify. Government program for recipients of select programs include Medicaid, SNAP, Housing Assistance, WIC, Veterans Pension, Survivor Benefits, Lifeline, Tribal. 15 GB internet service. Bonus offer: Android tablet FREE with one-time \$20 co-pay. Free shipping & handling. Call Maxsip Telecom today! 866/433-5324

AUCTIONS
HIGHWAY 59 AUCTION SERVICE
Slayton MN, December 12th 10AM. Equipment and Machinery consignment! Now taking consignment! Fair commissions! Call Jess Donkersloot 507/370-1912 today. Website: auctionzip.com

MISCELLANEOUS
DONATE YOUR CAR
truck or boat to Heritage For The Blind. Free 3-day vacation, tax deductible, free towing, all paperwork taken care of 844/220-9501

ENJOY 100% GUARANTEED delivered-to-the-door Omaha Steaks! Get 8 FREE Filet Mignon Burgers! Order The Butcher's Deluxe package this holiday season- only \$99.99. Call 855/402-7187 and mention code 71941ALG or visit www.omahasteaks.com/GiftGiving3287

DISH NETWORK
\$64.99 for 190 Channels! Blazing fast internet, \$19.99/mo. (where available.) Switch & get a FREE \$100 Visa gift card. FREE voice remote. FREE HD DVR. FREE streaming on ALL devices. Call today! 855/562-4309

Classified Advertising that is Easy!
THE MINNESOTA CLASSIFIED Ad NETWORK
Make an impact with your advertising dollar with classified advertising that reaches over 2.5 million readers!

mcAN STATEWIDE CLASSIFIEDS
Your newspaper representative can provide complete details.
The 2x4 Network is a program of the MNA, phone 800-279-2979

Nothing says Christmas like a card from home...

Look for our display at Christmas in the Park!

SEND A CARD TO A SERVICE MEMBER!


Let our soldiers, airmen and women, sailors and marines know you are thankful for their service!

- Use a greeting card - or make your own!
- Do NOT put your card in an envelope.
- Avoid using glitter - it's a problem if it gets on uniforms.
- Avoid political statements or religious discussions, but feel free to let them know you are praying for them!
- Don't date your card/letter because they will be sent out all year long as part of MILITARY MISSIONS care packages.

Cards will be collected at the park or drop them off at The Star Herald office.

Do you have a loved one serving in the military?
If you'd like cards sent specifically to your service member, please contact The Star Herald office with their address and we will make sure some of the cards get sent to them!
Questions? Please contact us at 507-283-2333.

Rock County
STAR HERALD



Open House
December 15 • 9-4
 Cookies, coffee and cider

SECURITY SAVINGS BANK

Luverne
 bankwithssb.com

Member FDIC



Mavis Fodness photos/1208 Library Santa

Santa, Winterfest puppet show return to library

The Winterfest puppet show and the in-person visit by Santa Claus returned, after a two-year hiatus, to the Rock County Library Friday morning in the library basement. Children's librarian Bronwyn Wenzel explained that the puppet show (pictured above) called "What?! Santa Retires?!" needed to be recorded "because the puppets went on vacation." Library staff wrote and performed in the video recorded puppet show, where Santa retires to Hawaii and is later lured back to work through a special present purchased by Mrs. Claus.

Below: Hanna Goembel intently watches the video puppet show.



Quinn Overgaard scowls while having his picture taken Friday morning at the Rock County Library's Winterfest puppet show and visit with Santa (Jake Rauk). **Below:** Daxton Mann (left) and Carter Brandt stare eagerly at Santa (played by Jake Rauk) as they wait for candy canes to be handed out. Maria Sandager (center) waits her turn.




Christmas Season is approaching...
GIVE THE GIFT THAT LASTS ALL YEAR!
 Give a gift subscription to the
Rock County Star Herald
 or
Star Herald Online Edition

TO SUBSCRIBE - Visit star-herald.com or call 283-2333



LIVE STAGE SHOW

A Prairie Christmas-On Stage is a delightful celebration of food, stories, music and memories from the Heartland.

Book your spot now for this beloved holiday tradition. Longtime broadcaster and America's Storyteller, Jeff Gould adapts his nationally syndicated A Prairie Christmas radio program to the stage—with heartwarming results.

Fun and interactive, A Prairie Christmas-On Stage is fun sleigh ride through the season packed with hilarious stories, poignant memories and nostalgic moments. It's sure to be one of the highlights of your holidays and a surefire way to get into the Christmas spirit.

FEATURING JEFF GOULD WITH LIVE MUSIC
 Learn more about Jeff and A Prairie Christmas at ILikeThatStory.net.

FRIDAY, DECEMBER 16
SPRINGBROOKE EVENT CENTER

5:00 PM	Social Hour
6:00 PM	Dinner (Tony's Catering Buffet Style) Pork Loin, Bacon-Wrapped Chicken Breast, Cheesy Hash Browns, Greenbean Casserole, Salad, Dinner Rolls and NY Style Cheesecake
7:15 PM	Show Begins

TO PURCHASE TICKETS:
 Contact
 Tyson Metzger @ 605-251-1228
 or
 Erin Metzger @ 605-370-1616
 or go to
ilikethatstory.net/a-prairie-christmas

In de-icing season, a 'less is more' approach best protects runoff into rivers, streams

With the arrival of winter come warnings to avoid using too much of a good thing to maintain snowy roadways, sidewalks and parking lots.

Salt — often used to de-ice our paved surfaces — is commonly over-applied, sending too much chloride into our waterways and wreaking havoc for fish and other wildlife. Minnesotans can do their part this winter with a "less is better" strategy for salting surfaces and by using other tools to get the job done.

It only takes one teaspoon of salt to permanently pollute five gallons of water. That's right, it's there for good. Chloride from de-icing is one of the largest contributors to a growing salty water problem in Minnesota.

Minnesotans can take action this winter with these smart salting tips:

- Shovel and scrape. The more snow and ice you remove, the less salt is needed to be effective. (Go to youtube.com and watch "Improved Winter Maintenance: Good Choices for Clean Water" about tools, techniques and products that you can use to keep your driveways and sidewalks safe while protecting our waters.
- 15 degrees Fahrenheit and below is too cold for salt. Most salts stop working at this temperature. Use sand instead for

traction, but remember that sand does not melt ice.

- Use the right amount. That crunch from sidewalk salt under your feet does not signify safety. People often think more salt equals more snow and ice melt. Around 12 ounces — roughly a coffee mug full — effectively treats a 20-foot driveway or 19 sidewalk squares (about 1,000 square feet). Aim to apply salt consistently (e.g. with a spreader), and use only in critical areas.
- Sweep up visible salt on dry surfaces. It is no longer doing any work and will be washed away into local waters. You can keep it to use later.
- Don't expect perfect conditions. Slow down and drive carefully. Always give plow drivers plenty of space to do their work. Consider purchasing wintertires.
- Wear proper footwear. Wear shoes or boots with good traction and pay attention to where you are walking, avoiding icy spots, if possible. Take it slow and give yourself extra time to get where you're going.
- Hire certified Smart Salters. Businesses that need someone to shovel or plow should hire a trained and certified Smart Salting contractor.

The MPCA offers training. Check the website pca.state.mn.us to learn more about Smart Salting training and related topics.

WINTER SPORTS

Featuring LUVERNE Hockey, Gymnastics & Wrestling AND LUVERNE & HILLS-BEAVER CREEK Basketball

December 8, 2022

A production of The Star Herald & Featured Advertisers



Greg Hoogeveen photos/1208 boys hockey preview

The 2022-23 Luverne boys' hockey team includes five returning seniors, (from left) Ethan Langseth, Brock Behrend, Gavin Reisch, Brady Bork and Kaleb Hein.

Expectations are high for Cardinals boys' hockey team

By Greg Hoogeveen

The Luverne High School boys' hockey team returns 21 skaters from last year's program, and head coach Phil Paquette said internal competition will improve the team play.

"Expectations are high coming off our success last year with our returning performers," he said.

The 2022-23 varsity roster consists of five seniors, eight juniors, seven sophomores and one ninth-grader.

In that roster they are returning all-conference selections senior Brock Behrend

"We are looking forward to the challenges and successes we can reach as a team."

— Phil Paquette, head boys' hockey coach

and junior Patrick Kroski, plus two honorable mention all-conference players, juniors Tyler Arends and Owen Sudenga.

Also returning are defensive leaders Ethan Langseth, a senior, and Henry Hartquist, a junior.

Last season the Cardi-

nals finished 16-11. They were seeded third in the section, losing to eventual champion Mankato East.

Paquette said he hopes to build on last season and finish as section champions this year.

"We have more depth this year," he said.

"But a challenge again this year is we have only one goalie, Tyler Arends, and we'll rely heavily on him."

Other seniors on the roster include defense and forward Kaleb Hein and forwards Brady Bork and Gavin Reisch.

Other juniors include defenseman Will Serie and forwards Elliot Domagala, Spencer Kracht and Tucker Dammann.

Sophomores on the roster are forwards Alex Schlosser, Jose Medina and Levi Gonnerman, defensemen Layke Miller and Sage Viessman, and defense/forwards Blaik Bork and Marcus Vortherms.

The lone ninth-grader on the roster is forward Maddux Domagala.

Boys hockey/see page 8B

Cardinals girls to be a powerhouse for 2022-23 season

By Greg Hoogeveen

The Luverne girls' hockey team starts the 2022-23 season on a high note coming off a 23-5-0 previous season that ended with an appearance at the Minnesota State High School girls' hockey tournament.

The Cardinals beat New Ulm 3-2 in overtime to clinch the Section 3A Championship only to lose to South St. Paul 3-1 and River Lakes 4-2 in the finals.

Head coach Tony Sandbulte, now in his 15th year, said he's looking forward to building on a strong program and helping the younger players make adjustments to playing at the varsity level.

"We have the right group of leaders in place," he said. "And it will be exciting to see how they will help the underclassmen and gel as a team."

A strong core of players will be led by team captain Kamryn Van Batavia, senior forward, who signed to play hockey next year at Minnesota State University, Mankato. Assistant captains are Mallory Nelson, senior defenseman, and Mallory Von Tersch, senior goalie.

The 2022-23 Cardinal girls' hockey roster also consists of junior forward Anika Boll, sopho-



Greg Hoogeveen photos/1208 girls hockey preview

Three seniors return to lead the 2022-23 Luverne girls' hockey program. They are (from left) Mallory Nelson, Mallory Von Tersch and Kamryn Van Batavia.

more forwards Payton Behr and Zariah Holmgren, freshmen forwards Paula Martinez, Ella Apel, Greta Mc-

Clure and Hannah Woodley, and freshman goalie Emma Saarloos.

The six eighth-graders on

the team include forwards Tenley Behr, Izzy Steensma, Marlee Nelson and defensemen Cassidy Saarloos,

Macie Edstrom and Rylee Kurtz.

The team includes seventh-grade forward Ellie Van Batavia, who has already seen playing time with her big sister, Kamryn.

"Playing with Kamryn and being on the same line as her has been a great start to my first year of varsity," Ellie said.

"On the ice she gives me positive feedback, and we communicate and connect with each other really well. I'm looking forward to making memories with her and seeing how far our team goes," she said.

For her part, Kamryn said she's enjoyed the family connection on the ice.

"Being able to play with my sister is special, but being able to play on the same line is very special and exciting," Kamryn said.

"This is our first year playing with each other so we are still getting used to playing together. We have a sister connection, which allows us to work well together."

A fun fact about this year's team is that there are three sets of sisters playing on the team.

In addition to the Van Batavia sisters, Tenley and Payton

Girls' hockey/see page 8B



Greg Hoogeveen photos/1208 boys bb preview

The 2022-23 Luverne boys' basketball program returns five seniors. They are (front, from left) Marcus Feit, Riley Sneller, Tyson Cowell, (back) Gannon Ahrendt and Ja'Shon Winter.

Luverne boys' basketball team sets sights set high for 2022-23

By Greg Hoogeveen

The 2022-23 Luverne boys' basketball team may be lacking in varsity experience, but head coach John Sichmeller, now in his 10th year, is optimistic about the upcoming season.

"I am excited to see how the team improves throughout the year and to see which players step up throughout the season," Sichmeller said.

"We are looking to rely on our seniors to lead us this year."

The Cardinals' roster includes six seniors, guard Marcus Feit, guard Tyson Cowell, forward Riley Sneller, forward Ja'Shon Winter, forward Ashton Eitreim, and forward Gannon Ahrendt.

Ahrendt, who reached his 1,000th point during his junior season, is on track to break the school's scoring record.

"It is very impressive to reach 1,000 points anytime, but as a junior it is even more impressive," Sichmeller said in February.

"Gannon would probably

already be the school's all-time leading scorer if we wouldn't have had a shortened season last year and had he not broken his leg this year," he said back then.

Ahrendt is just the second boys' basketball player in Luverne High School history to reach the milestone.

Brett Heronimus was the first in 2013 and still holds the school record with 1,248 total points. Ahrendt, as a junior, had 1,017 points as of Feb. 21, 2022.

Underclassmen on the 2022-23 squad also include two juniors, center Gavin DeBeer and forward Isaac DeBates, three sophomores, guard Carter Sehr, center Eli Woodley and forward Landon Ahrendt, and one freshman, guard Jaydon Johnson.

Last year the Cardinals posted a 10-14 record.

They finished their year losing 51-49 to Fairmont High

"We are looking to rely on our seniors to lead us this year."

*— John Sichmeller
LHS head coach
boys basketball*

School in the Subsection 3AA South quarterfinal.

The Cardinals were set to play their first game against the Southwest Minnesota Christian Eagles at home Dec. 1 and in Hills against the H-BC Patriots Dec. 6.

They'll face the Pipestone Arrows in Pipestone on Friday, Dec. 9.



photo/1208 LHS BB Gannon Ahrendt dunks the ball against H-BC Gannon Ahrendt dunks the ball during a February 2022 game against Hills-Beaver Creek. He had 1,017 points as of Feb. 21, 2022, during his junior year.

GRINNELL MUTUAL MEMBER
Heartland Mutual Insurance Company
 Specializing in Farm & Home Insurance
"Serving our Policyholders for over 125 years"
 Lismore • 507-472-8216 | Luverne • 507-283-9182

MIDWEST DRY CAST
 THICKER slat
 STRONGER design
 LONGER warranty
 1281 101st Street
 Luverne, MN 56156
 Office: 507.935.5555
 sales@midwestdrycast.com
 www.midwestdrycast.com

Mark's PLUMBING, HEATING, A/C, LLC
 507-283-9245
TEMPSTAR
 Heating and Cooling Products
 608 W. HATTING, LUVERNE
 MARK & CINDY KURTZ, OWNER
 Master Plumber Lic. #066849-PM

MINNWEST BANK
 116 East Main Street • Luverne • 507-283-2366
 Hwy. 75 • 800 South Kniss • Luverne • 507-283-9131
 www.minnwestbank.com • Member FDIC • MoneyLine 888-616 BANK

CHS

Luverne Building Center
 102 E. Maple
 Luverne, MN
 507-283-9151

BRANDENBURG Gallery
 213 E. Luverne St.
 Luverne, MN 56156
 507-283-1884

Country Cupboards
"Where Fine Craftsmen Produce Work With Pride!"
 2 miles south of Luverne on Hwy. 75
 Phone 507-283-8176

EISMA AND EISMA ATTORNEYS AT LAW
 130 East Main St. Luverne MN
 507-283-4828

BIG Oru's BAR
 UPTOWN ADRIAN, MN
 507-483-2885

LOCAL DIGITAL ADVERTISING.
 Rick Peterson
 507-290-0924
 bluemounddigital@gmail.com
 Wyatt VanSteenberg
 507-220-1994
 wyatt.bluemounddigital@gmail.com
 507-283-2333 (Star Herald)

blue mound digital
 STAR HERALD ANNOUNCER

VERSTEEG EXCAVATION
 Tree Removal | Grain Hauling | Excavating/Demolition
 Conservation Work | Snow Removal | Trucking
CHAD VERSTEEG
 507-227-2522
 1432 150th Ave.
 Luverne, MN 56156



Greg Hoogeveen photos/1208 girls bb preview

The Luverne 2022-23 girls' basketball roster includes seven seniors. They are (front, from left) Emma Beyer, Jocelyn Hart, Averill Sehr, (back) Lauren Hansen, Elizabeth Wagner, Christina Wagner and Jady Hart.

Luverne girls' basketball team to build off previous success

By Greg Hoogeveen

The 2022-23 girls' basketball team approaches the new season on the heels of a 23-5 record last year that ended with a loss in sub-sections to Fairmont.

Head coach T.J. Newgard, now in his ninth season as head coach, said the Cardinals are well-positioned for success.

"This team has won a lot of games and we are looking to compete for a section championship this year," he said.

"This team is full of great players but even better people. They pride themselves on how they carry themselves on the court, in the classroom and in the community."

He said the Cardinals will rely on a solid group of seven seniors for leadership this year.

They include point guard Christina Wagner, point guard Emma Beyer, guard Averill Sehr, guard Elizabeth Wagner, center Jocelyn Hart, center Lauren Hansen and point guard/center Jady Hart.

The team will also look for contributions from seven juniors on the roster.

They include guard Tori Serie, guard

Sarah Stegenga, point guard Dennie Sandbulte, point guard Kira John, guard Kiesli Smith, guard Josi Voorhees and guard Kayla Bloemendaal.

Newgard said he has high hopes for the Luverne team, whose roster is loaded with upperclassmen.

"We are just looking forward to competing each time we step on the floor," he said.

He mentioned that Minnesota Basketball News publication has Luverne ranked 14th in its pre-season issue. It also has Elizabeth Wagner listed in the Top 50 Players in girls' 2A.

With this leadership and some hard work on the court, Newgard said the season looks bright.

"We hope to be playing our best at the end of the season and make a deep run in the postseason," he said.

The Luverne girls' basketball team was set to play the Southwest Minnesota Christian E-gals at home Dec. 1. The Cardinals were scheduled to play the Edgerton Dutchmen in Edgerton Dec. 5.

They'll face the Pipestone Area Arrows at home on Friday, Dec. 9.



Submitted photo

Luverne High School basketball player Christina Wagner dribbles through traffic during a game with the Worthington Trojans in February 2022.

 **HARTQUIST**
FUNERAL & CREMATION SERVICES
Celebrating Life
Pipestone Luverne Lake Benton Jasper Tyler
www.HartquistFuneral.com

 **HILLS STAINLESS STEEL & EQUIPMENT CO., INC.**
505 W. Koehn • PO Box 987 • Luverne, MN 56156
Phone: (507) 283-4405 • Fax: (507) 283-4407
www.hss20.com
TANK TRAILER REPAIR & PARTS • STAINLESS STEEL FABRICATING

 **First Farmers & Merchants**
We believe in you.
Member FDIC. And the community.
FREE Mobile Deposit!
Luverne 507.283.4463 For more details visit www.ffmbank.com Find us on FACEBOOK

 **Jordan and Stacey Smidt**
Owners
507-449-6102
stacey.smidt@gmail.com
bigtoptentrentalsmn.com
GO BIG RED!!

 **Bill Korth**
Auction Service
Licensed Auctioneer
710 N. Oakley
Luverne, MN 56156
Home: 507-283-4766
Cell: 507-227-4958

 **808 S. Kniss**
Luverne, MN
507-283-2381
Buffalo Ridge
INSURANCE

Quality Service Since 1927!
McClure Electric
121 N. Cedar, Luverne, MN | 507-283-4716
Alan M. Aanenson, owner

Ketterling Services, Inc.
401 S. Cedar St. • Luverne, MN • 507-283-2863 • www.ketterlingservicesinc.com
Hours: Tues.-Fri. 8:30 a.m. to Noon & 1 p.m. to 5 p.m. Sat. 8:30 a.m. to Noon
Roll-Off Service for Building Demo & Remodeling
SANITATION: Commercial Residential Rural RECYCLING: Collection Dropoff
Monthly - Weekly - Daily

DEN HERDER CONSTRUCTION, INC.
P.O. Box 522 • Luverne, MN 56156-0522
507-920-8916 or 507-920-8917

New Prairie Insulation
Beaver Creek, Minn.
507-673-2548


 **Dylan Tieszen**
Owner / Technician
218 S Main St
Steen MN 56173
(507) 855-2333
tieszenautomotive@yahoo.com
tieszenautomotive.com

Vander Kooi Law Offices, P.A.
127 East Main, Luverne, MN
Phone 507-283-9546



Greg Hooegeven photos/1208 gymnastics preview

The 2022-23 gymnastics team returns its entire varsity roster from last year. They are (front, from left) sophomore Amira Cowell, freshman Addyson Mann, junior Sarah de Cesare, (back) freshman Kianna Winter, sophomore Kendra Thorson, sophomore Ella Reisdorfer and sophomore Hailey Como.

Varsity experience will carry LHS gymnasts to new heights

By Greg Hooegeven

The 2022-23 Luverne High school gymnastics team returns last year's entire varsity roster.

This bodes well for the upcoming season, according to 29-year Cardinal head coach Phoebe Flom.

"We have girls with a lot of varsity experience and success," she said.

"This is a very talented group of gymnasts who are very self-motivated and strong, and basically a dream to coach."

She said the team will lean on sophomores Ella Reisdorfer and Amira Cowell, two varsity all-around gymnasts with state gymnastics experience to help them advance this season.

The roster also includes juniors Sarah de Cesare and Brooklyn Wicks, sophomores Hailey Como and Kendra

Thorson, freshmen Addyson Mann, Gabriella Nath-Huls, and Kianna Winter, eighth-graders Reinha John and Reagan Gangestad and seventh-graders Jerzey Hood and Morgan Nath-Huls.

Last year's LHS gymnastics season record was 7-4, and Flom said she and the team are looking to improve on that this year.

"We hope to send some more girls to state again," she said. "These gymnasts can make a run at the record."

The goal this year is to break the school team score record of 135.525 points that was set in 2017.

Flom said the team will face injury challenges early in the season with two gymnasts recovering from an ATV accident earlier this year.

Loosbrock is out for the season, and de Cesare, a

varsity all-around competitor, is out until she is medically cleared.

In addition, Flom said a few others are starting the season with pulled muscles and are not yet practicing at their full capacity.

Flom said she's generally optimistic about the 2022-23 gymnastics season.

"This is the most talented team I have ever coached," she said.

"They are working hard to add new, advanced skills. If you haven't seen a gymnastics meet in a while, you would be impressed with the skill level of these girls."

The Cardinals' home opener was set for Dec. 1 with Blue Earth Area, and they were scheduled to compete Dec. 6 in Worthington.

They will travel to the St. James Invitational Dec. 10.



Minnesota State High School League photo

Luverne gymnastics coach Phoebe Flom (left) stands by as LHS gymnast Ella Reisdorfer completes a pike Tsukahara off the vault during the 2022 MSHSL gymnastics tournament. Reisdorfer competed in the all-around competition.

Elbers Auction Service
 "Quality Auctions Since 1988"
 Your complete auction service • No sale too big or too small
Keith Elbers, Auctioneer / Real Estate Sales
 www.ElbersAuction.com Lic #67-62
 office: 507-962-3433
 home: 507-962-3432
 cell: 507-920-6131
 keith@realestateretrievers.com

Real Estate Retrievers
 Allstate Realty Team - Rewarding you with Results

The Estenson Company, LLC
 Call me today for a complimentary insurance review.
Tim Knoll (507) 283-2386
 419 E. Main
 Luverne
 tknoll@iw.net

Allstate
 You're in good hands.

Insurance subject to availability and qualifications.
 Allstate Indemnity Company, Northbrook, Illinois © 2022 Allstate Insurance

Henning
 CONSTRUCTION INC

ADRIAN - LUVERNE, MINNESOTA
 201 Louisiana Ave | Adrian, MN | 507-483-2486
 www.henninginc.com

Luverne ACE
 So much more than just a Hardware store
210 East Lincoln • Luverne • 507-283-4161

Luverne BODY SHOP AUTO GLASS

KEVIN AAKER
 kevin@luvernebodyshop.com
 ANDREW HEMME
 andrew@luvernebodyshop.com

920 Commerce Rd.
 Luverne, MN 56156
 507.283.8711

H&A

224 E MAIN ST
 LUVERNE, MN 56156
 PHONE 507-283-4085
 HEIDBRINK & ASSOCIATES
 HEIDBRINKAGENCY.COM

FARM • HOME • BUSINESS • LONG TERM CARE • AUTO • CROP • LIFE • HEALTH

HOWLING DOG SALOON
 507-449-0454
NOW HIRING!

ROCK VETERINARY CLINIC, P.A.

1295 101st St
 Luverne, MN 56156
 Large and small animal services
 (507) 283-9524 • 1-800-632-8838
 rockvetclinic@gmail.com

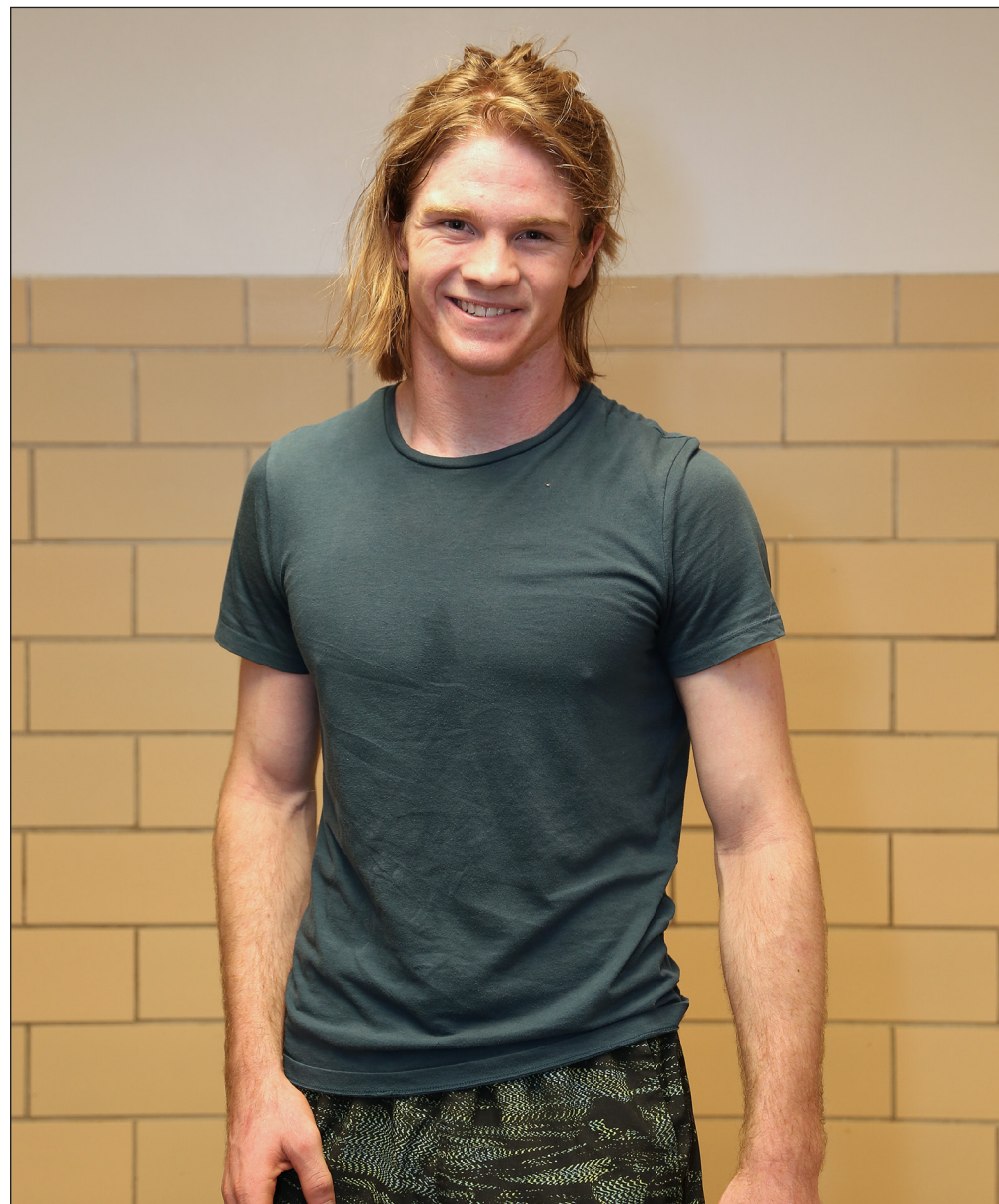
Dr. Tanner Brolsma
LUVERNE
 Family Dental
 115 East Main Street
 Luverne, MN 56156
 (507) 283-9129

Real Estate Retrievers
 Allstate Realty Team - Rewarding you with Results
REALESTATERETRIEVERS.COM

LUVERNE, MN 507-283-4216
 HILLS, MN 507-962-3433
 PIPESTONE, MN 507-562-0450
 EDGERTON, MN 507-631-1717

Rock County
STAR HERALD
 STAR-HERALD.COM | 507-283-2333 |   

Nutrien
 Ag Solutions™
 612 W Hatting Street, Luverne, MN 56156
 www.nutrienagsolutions.com • 507-449-7679



Greg Hooegeven photos/1208 wrestling preview

The 2022-23 Luverne wrestling team will be led by one senior, DJ Rock, who is new to the program. He and his family moved to the Luverne district from Colorado, where he has state wrestling experience.

“We continue to grow and provide the opportunities for our wrestlers to compete.”

“What many of these kids have accomplished isn’t always reflected by the final score.”

*— Jordan Kopp
Luverne High School
wrestling head coach*

Team growth, girls’ wrestling high points for 2022-23 season

By Greg Hooegeven

Growth and competition are this year’s focus for the 2022-23 Luverne High School wrestling program, according to head coach Jordan Kopp.

“We continue to grow and provide the opportunities for our wrestlers to compete,” said Kopp, who has six years of head coaching experience, plus six years as assistant coach at LHS.

He said the program has a healthy number of participants this year, with 28 wrestlers on the roster.

With these numbers, Kopp said he hopes to fill all the weight classes for this year’s matches.

“Last year we were only able to fill 10 weight classes out of the regular 14, so every dual meet we were behind 24 team points,” he said.

That was four weight classes that didn’t have LHS wrestlers, which meant giving up six team

points per class. Despite this, Luverne won five team duals, and Kopp has his sights set on improving that record this year.

The 2021-22 team had five wins and 14 losses, but Kopp said his athletes continued to give their best in practice and competition.

“What many of these kids have accomplished isn’t always reflected by the final score,” he said.

He said he and his staff like to focus on being competitive, filling a full dual meet roster, and continuing to grow the program.

The coach also said the Cardinals’ wrestling program will draw strength from returning letter winners.

They include juniors Cash Bonnett who will compete in the 182-pound weight class and Jacob Madison in the 195 class, sophomores Leif Ingebretsen at 138 and Jayden Reisch at 170, freshmen Cameron McCrary at

145 and Rayden Boyenga at 132 and eighth-graders Brody Kopp competing in 113, Matthew Gangestad at 132, Josh Stroh at 132 and Hudson Hough at 138.

The team has a new senior member, DJ Rock, who moved to the Luverne School District this fall. He competed previously in Colorado, where he was a state qualifier at the 152-pound weight class.

His brother, Sam, a junior competing at 170, also comes to LHS with state wrestling experience in Colorado.

And the Rock family doesn’t stop there. Two sisters, freshman Bernie competing in the 120 class and eighth-grader Cece at 152, are also part of the Luverne wrestling program, with their varsity contributions to be determined.

Female wrestlers aren’t new to the LHS program and the Minnesota State High School League; however, girls’ wrestling became an MSHSL-sanctioned sport in the

2021-22 season.

LHS grad Justyce Ripka was the Cardinals’ last female wrestler in the program.

This year, the Rock sisters will be joined by three other Luverne girls participating on the team.

They include junior Julia Hoogland, who will compete at 120, and sophomores Andrea Lui-tjens at 152 and Zakada Bradley at 106. Kopp said he looks forward to seeing them progress with the team.

Kopp and his assistants said they are excited for the upcoming season and are looking to be competitive with their numbers.

Their first competition was set for Dec. 3 at the Flandreau, South Dakota, Invitational, and Dec. 6 in Redwood Falls for the Redwood Valley Invitational.

They compete next Saturday in Jackson at the JCC Invitational. The first home competition is set for Dec. 17.

Viking Electric LLC
Tim Gangestad
Owner
(507) 290-2595
vikingelectricmn@gmail.com
Conquering all of your electrical needs!
Residential • Commercial • Agricultural

TITAN MACHINERY
410 W Koehn Ave · Luverne, MN
507.283.2319
www.titanmachinery.com
CASE II

Sterling's
Cafe & Grille
108 E. MAIN ST. • LUVERNE, MN 56156
507-449-0220 • WWW.STERLINGSLUVERNE.COM

Kozlowski
Insurance Agency & Financial Services, Inc.
212 S Kniss, Luverne • (507) 283-3704 or (877) 631-3704

Loosbrock Electrical Construction, LLC
Scott Loosbrock
Owner
Licensed • Bonded • Insured
Residential • Commercial • Industrial • Agriculture
scott@loosbrockelectric.com
www.loosbrockelectric.com 507-360-5418

taco john's
SOUTH JOHN'S
SINCE 1969
South Hwy. 75, Luverne
507-283-4562

Dingmann
Funeral Home • Cremation Service
www.dingmannandson.com
Luverne 507-283-4567
Worthington 507-372-4250
Adrian 507-483-2761

WALLY'S NURSERY
1st corner West of Hills, Minnesota
Phone 507-962-3267

TUFF
MEMORIAL HOME
A HOME WITH A HEART!
Hills, Minnesota • 507-962-3275

Connell
Car Care
800-844-2341

JOHN DEERE | **C&B**
C&B — Luverne

A-1 Auto Care
Irwin Rozeboom, owner
Open 8 a.m. to 5 p.m. weekdays & Saturdays by appt.
Shop Phone: 507-673-2232
Home Phone: 507-673-2488



Greg Hoogeveen photos/1208 HBC boys preview

The 2022-23 Hills-Beaver Creek boys' basketball seniors are (from left) Eli Taubert, Brayden Metzger, Brock Harnack and Joshua Wiersema. Head coach Kale Wiertzema said he'll look to this group for team leadership.

H-BC boys' basketball looking to seniors for leadership

By Greg Hoogeveen

The 2022-23 Hills-Beaver Creek boys' basketball team lost nine seniors from last year and they are leaning on the new crop of seniors early in the season, according to head coach Kale Wiertzema.

"Since losing 95 percent of our scoring and minutes played from last year, our focus is to enjoy the process by getting better every day," he said.

"The expectation is that we will be a much different team by the end of the year."

Last season H-BC finished 11-13 and 9-7 in the Red Rock Conference.

This year's roster includes seniors Brayden Metzger, Brock Harnack, Eli Taubert and Josh Wiersema.

"We'll need them to be great lead-

"The expectation is that we will be a much different team by the end of the year."

— Kale Wiertzema
H-BC boys' basketball head coach

ers early in the season," Wiertzema said.

Junior athletes on the team are Riley Tatge and Cooper Gehrke.

Sophomores are James Vanden-Bosch, Beau Bakken, Cameron Allen, Sawyer Bosch and Jackson Gacke.

Freshmen Jamin Metzger, EJ Wegener and Micah Bush round out

the roster.

"Our biggest challenge this year is our inexperience at varsity level," Wiertzema said.

"My hope is our underclassmen lead well and our sophomores and freshmen step up in a hurry. Both are capable but need to be confident in their new roles."

He said the Patriots are dealing with

a couple of injuries to start the year.

For example, Bush is recovering from a broken collar bone and Cooper Gehrke is waiting for results from a knee injury.

Despite his young team, Wiertzema said he's optimistic that his athletes will grow into their varsity responsibilities.

"What I'm looking forward to the most is the depth we'll have at all three levels," he said.

"It's already made practices much more competitive and gives us the opportunity to play fast and stay fresh."

The Patriots were set to open their season at home against Luverne Dec. 6. They'll face Red Rock Central at home Dec. 13.

Meulebroeck, Taubert & Co., PLLP
Certified Public Accountants
• Tax planning & preparation • Accounting, Payroll & Bookkeeping services
• Agri-plan™ - pretax medical deductions
109 S. Freeman, Luverne, MN
507-283-4055

ROCK COUNTY RCE CHIROPRACTIC
WWW.ROCKCOUNTYCHIROPRACTIC.COM
MICHAEL P. SMITH, D.C.
507-283-2561
103 E. MAIN
LUVERNE
- CHIROPRACTIC CARE - LASER THERAPY
- MASSAGE THERAPY - CUSTOM ORTHOTICS
- POSTURAL RESTORATION - NUTRITIONAL SUPPLEMENTS

State Farm
Jason Vote, Agent
311 W Gabrielson Rd #3
Luverne, MN 56156
507-283-4401

CLEVERINGA CONSTRUCTION, INC.
507-920-5631
Merlin Cleveringa
Adam Uithoven 507-227-1770 | Derek Sandbulte 507-227-1065
Luverne
507-283-2698 Home
Lic. #BC-20552185

KLOSTERBUER & HAUBRICH, LLP
DONALD R. KLOSTERBUER
JEFFREY L. HAUBRICH
DAVID A. OWENS
120 N MCKENZIE, LUVERNE, MN
507-283-9111

Luverne Area Chamber & CVB
Luverne, MN 56156 ~ 507-283-4061

S & S LOCKER SERVICE
204 S. Main St. Hills, MN 56136
507-962-3251
sslocker@alliancecom.net

Quality PRINTING, INC.
PAPER, SIGNS & PROMOTIONAL ITEMS
401 W Hatting St., Luverne, MN 56156
507-283-1716
qualityprinting-luverne.com

McClure PLUMBING, HEATING, AIR CONDITIONING, INC.
412 S. Kniss • Luverne, MN • 507-449-2828

Sunshine Gas
North Highway 75, Luverne (507) 283-4889

TOP NOTCH Car Wash
A Notch Above the Rest
305 Mag Road • Luverne, MN

Wayne's BODY SHOP
TIM WALGRAVE • JOSH VANDENHOEK • SETH MILLER
310 W. Hatting Street, Luverne MN
Office: 507-449-8315 Fax: 507-449-8326

Christmas Season is approaching...
GIVE THE GIFT THAT LASTS ALL YEAR!
Give a gift subscription to the
Rock County Star Herald
or
Star Herald Online Edition
TO SUBSCRIBE - Visit star-herald.com or call 283-2333

WINTER SPORTS SCHEDULES

LUVERNE

GIRLS' BB

Nov 29	Mt Lake Area	H
Dec 1	Southwest Minnesota Christian	H
Dec 5	Edgerton	A
Dec 9	Pipestone Area	H
Dec 13	Jackson County Central	A
Dec 16	Redwood Valley	H
Dec 20	Hills-Beaver Creek	A
Jan 3	Windom	A
Jan 6	Marshall	H
Jan 7	Montevideo @ SMSU Marshall	A
Jan 10	Worthington	H
Jan 13	St James Area	A
Jan 17	Jackson County Central	H
Jan 20	Windom	H
Jan 24	Pipestone Area	A
Jan 27	Redwood Valley	A
Jan 28	TBD @ Augustana	A
Feb 2	Fairmont	H
Feb 3	St James Area	H
Feb 7	Martin County West	A
Feb 9	Adrian Area	H
Feb 10	Canby	A
Feb 14	Tracy-Milroy-Balaton	H
Feb 16	Worthington	A
Feb 18	Big South Conference Showcase	A
Feb 25	Subsection	H
March 15-17	State Tournament	A

BOYS' BB

Dec 1	Southwest Minnesota Christian	H
Dec 6	Hills-Beaver Creek	A
Dec 9	Pipestone Area	A
Dec 12	Edgerton	H
Dec 13	Jackson County Central	H
Dec 16	Redwood Valley	H
Jan 3	Windom	A
Jan 6	Marshall	H
Jan 7	Montevideo @ SMSU Marshall	A
Jan 9	Worthington	A
Jan 13	St James Area	A
Jan 14	Colman-Egan	A
Jan 17	Jackson County Central	A
Jan 20	Windom	H
Jan 24	Pipestone Area	H
Jan 27	Redwood Valley	A
Jan 31	Martin County West	A
Feb 2	Fairmont	A
Feb 3	St James Area	H
Feb 7	Hills-Beaver Creek	H
Feb 13	Adrian Area	H
Feb 16	Worthington	H
Feb 24	Minneota	H
Feb 25	Big South Conference Showcase	A

WRESTLING

Dec 3	Flandreau Invitational	A
Dec 6	Redwood Valley Invitational	A
Dec 10	Jackson CC Invitational	A
Dec 17	Tournament	H
Jan 7	Garretson Invitational	A
Jan 10	Adrian Area	A
Jan 12	Triangular	A
Jan 14	Conference Tournament Fairmont	A
Jan 17	Worthington/Windom Triangular	H
Jan 21	Invitational Wabasso	A
Jan 26	Triangular	A
Jan 31	Quad	H
Feb 7	Viborg	A
Feb 9	Triangular	H
Feb 10	Triangular	A
Feb 16	Sectional Tournament	A
Feb 24	Individual Section Tournament	A
Feb 25	Individual Section Tournament	H
Mar 2-4	State Tournament	A



GIRLS' HOCKEY

Nov 15	New Ulm	A
Nov 17	Windom	H
Nov 19	Minnesota River	A
Nov 22	Fairmont	A
Nov 29	Marshall	H
Dec 3	Waseca	H
Dec 6	Austin	H
Dec 10	Mankato East	A
Dec 16	Minnesota River	H
Dec 17	River Lakes Stars	H
Dec 22	Worthington	A
Dec 26-28	Tournament @ Schwan Super Rink	
Jan 3	Fairmont	H
Jan 10	Albert Lea	A
Jan 13	Breckenridge/Wahpeton	A
Jan 14	Warroad Public	A
Jan 19	New Ulm	H
Jan 21	Dodge County	A
Jan 24	Worthington	H
Jan 27	Marshall	A
Feb 2	Windom	A
Feb 4	Waseca	A

BOYS' HOCKEY

Nov 29	Marshall	A
Dec 2	Two Rivers	H
Dec 3	Waseca	H
Dec 9	New Ulm	A
Dec 13	Windom	H
Dec 17	Rochester Lourdes	A
Dec 22	Worthington	A
Dec 28-30	Tournament @ Graham Arena Complex	A
Jan 3	Fairmont	A
Jan 7	MBA Storm	H
Jan 12	Redwood Valley	A
Jan 14	Waseca	A
Jan 17	Albert Lea	A
Jan 21	Dodge County	A
Jan 24	Worthington	H
Jan 26	New Ulm	H
Jan 31	Redwood Valley	H
Feb 2	Marshall	H
Feb 4	MBA Storm	A
Feb 7	Fairmont	H
Feb 10	Minnesota River	H
Feb 11	Minnesota River	A
Feb 16	Windom	A

GYMNASTICS

Dec 1	Blue Earth Area	H
Dec 6	Worthington	A
Dec 10	St James Invitational	A
Dec 15	Pipestone Area	H
Jan 5	Redwood Valley	A
Jan 7	Fairmont/MCW Invitational	A
Jan 10	Windom	H
Jan 17	JCC	H
Jan 26	Marshall	A
Jan 31	Fairmont	A
Feb 2	St James Area	H
Feb 7	New Ulm	H
Feb 18	Sections	A

HILLS-BEAVER CREEK



H-BC GIRLS' BB

Nov 26	MN West	A
Nov 29	Russell-Tyler-Ruthon	H
Dec 2	Edgerton	H
Dec 6	MCC	H
Dec 9	Adrian-Ellsworth	A
Dec 16	Alcester-Hudson	A
Dec 17	Central Lyon	H
Dec 20	Luverne	H
Dec 22	MLA-C	A
Jan 3	Elkton-Lake Benton	A
Jan 5	HLOF	H
Jan 9	Westbrook-Walnut Grove	A
Jan 10	West Lyon	A
Jan 12	Southwest MN Christian	A
Jan 14	Dakota State	A
Jan 17	Adrian-Ellsworth	H
Jan 20	MLA-C	H
Jan 21	Elkton	A
Jan 24	Edgerton	A
Jan 27	MCC	H
Jan 28	Red Rock Central	A
Jan 31	St Mary	A
Feb 6	Southwest MN Christian	H
Feb 10	HLOF	A
Feb 16	Westbrook-Walnut Grove	H
Feb 20	Red Rock Central	H

H-BC BOYS' BB

Dec 6	Luverne	H
Dec 13	Red Rock Central	H
Dec 16	Alcester-Hudson	H
Dec 17	Central Lyon	H
Dec 20	MLA-C	A
Dec 30	Tournament at SMSU	A
Jan 3	Elkton-Lake Benton	A
Jan 6	MCC	A
Jan 10	HLOF	H
Jan 13	Southwest MN Christian	H
Jan 14	Elkton	A
Jan 17	Edgerton	A
Jan 19	Adrian-Ellsworth	A
Jan 21	Dakota State	A
Jan 26	Westbrook Walnut Grove	H
Jan 28	Red Rock Central	A
Jan 31	MCC	H
Feb 3	Edgerton	H
Feb 7	Luverne	A
Feb 9	HLOF	A
Feb 14	Southwest MN Christian	A
Feb 17	MLA-C	H
Feb 21	Westbrook Walnut Grove	A
Feb 24	Russell-Tyler-Ruthon	A
Feb 27	Adrian-Ellsworth	H

**CHAMPIONS
KEEP PLAYING
UNTIL THEY
GET IT RIGHT.**



310 Gabrielson Rd., Luverne MN 56156 • 507-449-6000



205 E. Warren St., Luverne MN 56156 • 507-283-4429



Samantha McGaffee photo/1208 HBC girls

Taylor Huisman (left) and Olivia Bork are the senior leaders for the Hills-Beaver Creek girls' basketball team for the 2022-23 basketball season.

Lady Patriots to focus on 'attitude and effort' for 2022-23 basketball season

By Greg Hoogveen

Hills-Beaver Creek girls' basketball head coach Dylan Gehrke said his young team has been working hard in the offseason, and he looks forward to those efforts paying off for the 2022-23 season.

"These girls lived in the gym this past summer, and it will be exciting to see them contribute this year on the JV and varsity level," Gehrke said.

The Lady Patriots will return three starters from last year, senior guard Olivia Bork, junior guard Layla Deelstra and junior forward Lanae Elbers.

He said he'll also look for leadership from returning juniors Larissa Steinhoff and Brynn Rauk, freshman Abbie Harris, and eighth-grader Olivia Deelstra, all of whom contributed playing time on the varsity squad last year.

"All of these girls will be taking on more responsibilities throughout the season," Gehrke said.

"All of these girls will be taking on more responsibilities throughout the season."

"Here at H-BC our main goal is that we are growing as people just as much as we are as players."

— Dylan Gehrke
H-BC girls' basketball head coach

He said the team's main focus this year will be on attitude and effort.

"If we can take care of those two things, we will hopefully come out on top a lot throughout the season" Gehrke said.

Last year the Lady Pates were runners-up in the conference, and Gehrke said he hopes to be battling up there again this year.

The Patriots' roster also includes sophomores Bailey Spykerboer and Emma Deelstra and freshmen Izzy Wysong, Claire Knobloch, and Ella Sammons, who will see some of their first playing time this season on the floor for the varsity team.

Last year the H-BC girls were 11-5 in the conference with an overall record of 13-13. This year Gehrke said his team

faces another tough non-conference schedule.

"I know our girls will be up for the battle against some of the bigger schools in Minnesota, and out-of-state opponents as well," he said.

"Here at H-BC our main goal is that we are growing as people just as much as we are as players."

He said a sign in the locker room has been influential for Patriot athletes for years.

It says, "Person > Player," meaning that personal development comes ahead of athletic achievement.

"That is still our main focus," Gehrke said. "If we can be great people and teammates and focus on making everyone else's job easier, we will have a successful season, in my eye."

They were scheduled to host the Edgerton Flying Dutchmen Dec. 2 and Murray County Central Dec. 6. They will face Adrian-Ellsworth on the road Friday Dec. 9.

Girls' hockey/ from page 1B

Behr and Cassidy and Emma Saarloos are also playing together on the LHS team.

Coach Sandbulte is joined by assistant manager Matt McClure and volunteer assistants Ellen (Dahl) and Skyler Wenninger.

Sandbulte said he's pleased to be in a strong position starting the 2022-23 season, despite losing senior leaders who have moved on to play at the college level.

LHS 2022 grad Billi Connell is playing softball for the Minnesota Gophers, and Reghan Bork is playing hockey for Concordia College in Moorhead.

The Cardinals girls have already amassed a 5-0 record for the current season, beating New Ulm, Windom, Minnesota River, Fairmont and Marshall.

They were set to meet Waseca Saturday, Dec. 3, at home and Austin on Tuesday, Dec. 6, at home.

They will travel to Mankato East on Dec. 10.

Boys' hockey/ from page 1B

Paquette is in his seventh season as head coach.

He and assistant coaches Chris Denhoed and Kaden Ericson are excited for this season.

"We are looking forward to the challenges and successes we can reach as a team," Paquette said.

The Cardinals boys' hockey team won their first game of the season Nov. 29 against Marshall 5-3 in Marshall.

They were set to play Dec. 2 at home against Two Rivers and Dec. 3 at home against Waseca. They'll play New Ulm on the road Friday, Dec. 9.

Good Luck to the
COACHES and ATHLETES

Luverne Cardinals & H-BC Patriots

Papik MOTORS
Luverne • Rock Rapids • Sibley

NOW IN 3 LOCATIONS!
Let the Papik team take care of all of your automotive needs.
We make it easy!

507-283-9171 WWW.PAPIK.COM

PizzaRanch.com

NEXT TIME HAVE IT DELIVERED!

Order online or give us a call!

Pizza Ranch 507-283-2379
110 E Main, Luverne