



Rock County STAR HERALD

Rock County's oldest business, printing since 1873

Thursday, November 17, 2022

Rock County voter turnout 75 percent, local precincts report first in state

Nolz, Saker, DeBates, Hartman on school board; Aaker keeps council seat; Baustian loses bid for House

By Lori Sorenson

Rock County voter turnout in the 2022 general election was nearly 75 percent, according to local election official Ashley Kurtz.

Of Rock County's 5,582 registered voters, 4,163 participated in the midterm (non-presidential)

election.

That turnout is high compared with Minnesota's 60.66 percent turnout and the national turnout of just under 50 percent.

However, Kurtz said 2022's local participation is similar to the 2018 midterm election, which

attracted 73.44 percent of Rock County voters.

Rock County stood out in the 2022 election for another reason, according to Kurtz.

"We are proud to say we were the first county in the state fully reported," she shared in an

email at 9:10 p.m. Tuesday, Nov. 8, after all local precincts had reported.

"Everything went well. I feel like we have a great system at the courthouse on Election Night. We have lots of help, including employees from other departments

such as Administration and Land Records."

She said the staff divides and conquers election night duties, with an absentee processing room, a mail ballot processing room

Election results/see page 3A

All eyes are on day care plans in Luverne

Investment in day care center to pay off in long run

By Lori Sorenson

Luverne leaders are forging ahead with a \$6.4 million plan to convert former office space into a child care center.

Costs are daunting and smaller models struggle with earning a profit, but research shows the long-term community benefits are well worth the investment.

"By having a facility that can provide quality early care education to your youngest residents, it's going to relieve burdens from the school district and social service programs," said Trisha Lien, business development specialist with First Children's Finance.

"And this facility has the ability to break cycles that cost a lot of communities down the road."

Lien addressed a room full of city and county leaders Wednesday night, Nov. 9, in City Hall council chambers.

Of all the day care projects she's worked with over her career, Lien said Luverne's day care center plans will stand out as a model to be replicated.

"There are a lot of people in your region who are dying to know what Luverne and Rock County are doing and how are they doing it," Lien said.

"I can't tell you the number of times in a month I get asked that specifically. 'What are they doing over there? How are they getting this done?' All I can tell them is watch and see. There are going to be a lot of communities that will replicate this if this comes to fruition."

First Children's Finance is a national nonprofit organization that provides loans and business development assistance to child care businesses serving low- and moderate-income families.

The organization has been working with Luverne and Rock County for the past six years.

Costs to build and operate

The city of Luverne purchased the 30,000-square-foot Total Card Inc. building for \$515,000 this year — a "steal" at \$17 per square foot, considering the original asking price was \$1.1 million.

The city will renovate the building at an estimated cost of \$6.4 million (including architect and engineering fees and center equipment) and lease it to a non-profit board for \$1 per year.

The non-profit will acquire a license to operate the child care

Day care center/see page 14A



Mavis Fodness photo/1117 H-BC Veterans Program 2022

The Hills-Beaver Creek eighth- and ninth-grade girls sing "God Bless the U.S.A." to a full secondary school gymnasium during the Veterans Day program featuring H-BC elementary and secondary students on Friday, Nov. 11, in Hills.

Hills Veterans Day program celebrates 'heroes'



Rhird-graders sign "thank you" during their Veterans Day performance of "Proud of our Veterans" Friday at H-BC Secondary School. Pictured in the bleachers in Hills are (from left) Maddox Baker, Mallorie Boeve, Bryce Metzger and Gracie Heilderberg.

By Mavis Fodness

About two dozen local veterans attended the Veterans Day program Friday at Hills-Beaver Creek Secondary School, where they were treated as "everyday heroes."

"I wanted the public to notice that veterans are everyday people — high school students, young adults, janitors, volunteers, business people," said Randi Oftedahl, middle school teacher at H-BC.

The student-led ceremony featured four high school students — Oliva Bork, Malli Ternus, Britton McKenzie and Leif Tollefson — reading "Defining a Hero."

Standing in front of the crowded secondary gymnasium were five

community members — Dean Goettisch, Holly Sammons, Deb Hartz, Carter Abels and Carter Hartz — everyday people who live locally and are veterans, who served or are currently serving their country unselfishly.

Seated in two front rows were many members of the Hills American Legion Post #399 and other veterans. Each received a gift of appreciation from the school.

During the program elementary and secondary students sang and the high school band played patriotic songs in honor of the veterans.

Elementary students displayed patriotic artwork in the school's entryway.



Hills American Legion #399 members Carter Abels, Carter Hartz and Deb Hartz salute the American flag during the Posting of Colors Friday morning during the Veterans Day program at Hills-Beaver Creek Secondary School in Hills. The front row featured local veterans for whom students presented a program to the theme, "Defining a Hero."



H-BC high school students delivered the Veterans Day message "Defining a Hero" Friday as local veterans (from left) Dean Goettisch, Carter Hartz, Holly Sammons, Deb Hartz and Carter Abels represent everyday people who are veterans and heroic in their service to preserve the freedoms in the U.S.



COMMUNITY CALENDAR

Meetings

Annual meeting of the **Rock County Association of Townships** will be at 1 p.m. Friday, Dec. 2, in the downstairs meeting room at the Rock County Library. Representatives from each township are encouraged to attend.

Collections due by Nov. 21

Operation Christmas Child Shoebox collection week is Nov. 14-21. Boxes can be ordered online at samaritanpurse.org. Boxes may also be picked up at the American Reformed Church in Luverne (south door) and dropped back to the church.

Call Edna Buys, 507-227-7169 or Charla Sandbulte, 507-227-1722, for more information.

Food distribution is Nov. 17

New Life Celebration Church's third Thursday monthly food giveaway is at 4:30 p.m. Thursday, Nov. 17, at the Atlas building at 101 W. Maple Street in Luverne.

Enter from Maple Street and stay along the west side of the building. Parking lot opens at 3 p.m. Do not block the Redeemed Remnants parking lot, intersection or alley entrance. Food will be loaded into vehicles, which exit via the alley going west. Call 507-283-8963 or 507-283-4366 with questions.

SHARE distribution dates

Those wishing to receive groceries, clothing and toys from the Rock County SHARE program must apply by Wednesday, Nov. 23.

SHARE will distribute the gifts to Rock County residents in need from noon to 1:30 p.m. Wednesday, Dec. 7, at the Luverne National Guard Armory on South Freeman Avenue.

Note: SHARE is NOT accepting donations of used items at this time. To support the program, mail financial gifts to SHARE, PO Box 792, Luverne, MN 56156.

For information, contact Amy at 507-227-6944 or Monica at 507-820-1100.

UMC hosts free community Thanksgiving meal Nov. 23

The United Methodist Church will host its Wednesday night free community Thanksgiving meal at 5:30 p.m. Wednesday, Nov. 23. A pick-up option is available by calling 507-283-4529.

Thanksgiving at the Eagles Club

The Luverne Eagles Club will host a traditional Thanksgiving meal from 11 a.m. to 1 p.m. Thursday, Nov. 24, for a freewill donation. Meal includes turkey, dressing, mashed potatoes, gravy, corn, cranberries and pumpkin pie. Home-delivered meals are available by calling 507-227-2776 or 507-920-7649 by Monday, Nov. 21.

Community Ed

Community Education will offer the following classes in the next few weeks. Call 507-283-4724 to register or for more information.

Students (grades K-5) can learn to **decorate holiday cookies** like a professional at B'S Bakehouse on Dec. 10. Register by Nov. 18. Fee is \$30.

Ages 2 - 5 years will enjoy activities in the preschool rooms when they attend **Grandparent & Me** with a grandparent or another favorite adult on Nov. 22. No fee, but registration is required.

Register by Nov. 30 for the outdoor portion of **Snowmobile Safety** to be held on Dec. 10. Plan to do the online portion (\$29.95 online) prior to coming for the outdoor portion. Outdoor portion cost is \$10.

New Residents: Census Information Needed for Preschool Children. Call 507-283-4724 with information for children ages 0 to kindergarten. The school district uses the information for planning purposes.

If your child is 4 and has not been screened, call to complete the screening before kindergarten.



Lori Sorenson photos/1117 bogeys restaurant

The Luverne Country Club board and staff celebrated a ribbon-cutting of Bogey's Bar and Grill Monday night in the clubhouse. Pictured are (from left) Chamber Board members Becky Walgrave, Cris Oeltjenbruns and Shelly Nibelink, LCC board member Mary Jo Graphenteen, Bogey's manager Lisa Remme, LCC board president Lee Sells, LCC board members Evan Verbrugge and Ben Nath and Chamber Board member Tony Schomacker. (Below right, Remme prepares burgers on the grill)

Country Club opens Bogey's Bar and Grill

By Lori Sorenson

The Luverne Country Club opened Bogey's Bar and Grill this fall with a variety of food and drink options, plus bar and patio seating available.

Manager Lisa Remme hosted a Luverne Chamber gathering Thursday morning, when she explained food and entertainment options.

"We just added a kids' menu, and we keep adding new things to the menu as people suggest things to us," she told a room full of Chamber members, who ordered lunch from the menu following the meeting.

"There's always room to keep growing, but the menu has what we currently offer."

Board president Lee Sells explained that the clubhouse used to have a full kitchen, then went to partial kitchen and now is back to full kitchen capacity again.

"Lisa came on the board this fall and had a bunch of good ideas and asked about being open this winter, so we figured we'd give it a try," Sells said.

He explained that the party room is available to be leased for events. It has a capacity of roughly 100. If the entire building is reserved, it has a capacity of 200 people.

Bogey's Bar and Grill can serve food for private events, or people can bring in their own caterers.

The Luverne Country Club website has a price list for event rental options.

Sells said the clubhouse is always open to the public, but there hasn't always been a full kitchen. Now they're trying to get the word out that it's a restaurant for everyone — not just club members.

Daily specials are shared on the restaurant's Facebook page, which also has the business hours and other information.

The Luverne Country Club phone number is 507-283-4383.



Bogey's Bar and Grill manager Lisa Remme addresses a gathering of Luverne Chamber members in the Luverne Country Club clubhouse Thursday morning to share information about the restaurant and the club's options for renting the event center.

#TellUsTuesday Results

Scan Here to Vote for this Week's Survey!



Have You Or A Loved One Served In The Military?

Yes, I have.	24%
No, I have not but a loved one has.	50%
Yes, a loved one and I have both served.	11%
No, but I support our troops.	15%

Christmas Season is approaching...

GIVE THE GIFT THAT LASTS ALL YEAR!

Give a gift subscription to the
Rock County Star Herald
OR
Star Herald Online Edition

TO SUBSCRIBE - Visit star-herald.com or call 283-2333

Rock County
STAR HERALD



Dial-a-Specialist Your One Stop Guide to Local Businesses

DR. MICHAEL SMITH
Most Insurance Accepted
WWW.ROCKCOUNTYCHIROPRACTIC.COM
283-2561 • 103 E. MAIN, LUVERNE

Viking Electric LLC
Tim Gangestad
Owner
(507) 290-2595
Conquering all of your electrical needs!
Residential • Commercial • Agricultural

Luverne
MINNESOTA City Offices
Love the life!
PO Box 659, Luverne, MN 56156
507-449-2388 (24 hour voice mail)
www.cityofluverne.org

LUVERNE HEALTH & WELLNESS
Codie Zantenhorst, DC
LuverneChiro.com
Chiropractic Acupuncture Massage
Auto, Work, and Sports Injuries
109 S Freeman Ave Luverne, MN
507.449.4400

• Chiropractic

• Electrician

• City

• Chiropractic

Election results/from page 1A

and one person assigned strictly to uploading results.

Meanwhile a group of employees assists those from the polls bringing in results, and others help carry equipment in as it's being brought back from the precincts.

"We've done it this way for a few years, and it works really well for us," Kurtz said.

"Every year we learn things that we can tweak for the next election, so it seems like the process gets quicker and more efficient each election.

Kurtz said credit for a smooth election night is shared with many.

"Our city clerks and election judges that process polling place results work hard to make sure their numbers all balance before getting to the courthouse as well, which also helps the process," she said.

"There are a lot of tasks that have to happen from the time that the polls close at 8 p.m. and when the results are posted online. I think we've come up with a good system to get us there."

Rock County deep red

Meanwhile, Rock County voters showed their true Republican colors on their ballots for state and federal offices in Minnesota.

DFL governor Tim Walz won his bid for re-election with 52.27 percent of state votes, but if Rock County voters had their way, the next governor would have been Republican challenger Scott Jensen, who captured nearly 70 percent of Rock County votes.

Similarly, DFL incumbent Steve Simon was re-elected as Minnesota's Secretary of State. However, Simon's Republican challenger Kim Crockett had more than 70 percent of Rock County's votes.

Rock County's "red" trend continued for state attorney general and state auditor. DFL incumbent Keith Ellison was re-elected as attorney, but in Rock County, his Republican challenger Jim Schultz had 72 percent of Rock County votes. And DFL incumbent Julie Blaha was re-elected as state auditor, but 70.21 percent of Rock County voters chose Republican Ryan Wilson.

Following are official results from local contested races.

Luverne School Board

The Luverne School Board election drew extra attention this year with 18 candidates for five open seats.

Four were elected out of 15 candidates vying for the four-year terms on the board. They include Zach Nolz (1,173 votes, 11.27

"We are proud to say we were the first county in the state fully reported. Everything went well. I feel like we have a great system at the courthouse on Election Night."

— Ashley Kurtz election official

percent), Randy Saker (1,020 votes, 9.8 percent), Michael DeBates (913 votes, 8.77 percent) and Eric Hartman (902 votes, 8.67 percent).

Ryan DeBates was elected to fill the remaining two years of the seat vacated by Jeff Stratton who left the board to become the school resource officer. DeBates captured 1,288 votes (46.53 percent) in the three-way contest.

Luverne City Council

In the race for Luverne City Council's Ward 2 seat, incumbent Kevin Aaker narrowly defeated challenger Mert Kracht by 10 votes, 377-367.

The margins were close, but not close enough to trigger an automatic recount. The difference needs to be less than one-half of one percent. In this case, the difference was 1.34 percent.

Minnesota House

In the contest between two Luverne candidates for Minnesota's District 21A House seat, Republican incumbent Joe Schomacker beat D-FL challenger Pat Baustian with 74.29 percent of the votes (13,536). Baustian garnered 25.64 percent (4,671).

Hills and Beaver Creek city council races

The Hills City Council election had five candidates vying for two open seats. Newcomer Cory Metzger garnered the most votes, 171 and 30.11 percent, with incumbent Vickie Busswitz keeping her seat with 149 votes and 26.23 percent.

Four people filed for two open seats on the Beaver Creek City Council.

Council members Jeff Dysthe and Pat Bender did not file for re-election, and Heidi Freese (89 votes, 36.93 percent) and Jacob Conger (78 votes, 32.37 percent) were elected to replace them.

For more complete 2022 election results, see the Minnesota Secretary of State website, sos.state.mn.us. Click on elections and 2022 results.



Mavis Fodness photo/1117 Friend of Education 2023

The Luverne Public Schools custodial staff members are the 2023 Luverne Education Association Friend of Education as announced Monday afternoon during a kickoff to American Education Week. Pictured are (seated, from left) Randy DeSplinter, Jason Brechler, Barry Shelton, (second row) Cory Schmuck, Dwight Smedsrud, Ron Stuckenbroker, Lowell Schelhaas, Kirk Terrio, Beryl Moser, (back) Britton Stratton, Matthew Fleming, Connor Gumto and Jonathon Dolo. Missing is David Cutshaw.

Custodial staff recognized as LEA's Friend of Education

By Mavis Fodness

The custodial staff members at Luverne Public Schools say they are only doing their jobs, but the Luverne Education Association said they go above and beyond normal duties in their support of public education.

The 14 full- and part-time custodians were selected as the 2023 LEA Friend of Education Monday after-

noon at an ice cream social to kick off American Education Week at Luverne schools.

"Because of these guys' work and dedication, it makes my job easy," said Cory Schmuck, buildings and grounds supervisor.

The custodians also make teachers' jobs easier in the 420,000-square-foot elementary

and middle-high school facilities, according to nominations submitted to the LEA selection committee.

"The custodians are wonderful. So much of what they do often goes unnoticed," wrote one nominator.

"Besides taking care of the classrooms and hallways day-to-day, they

LEA friend, go to page 5A

Christensen named 2023 LEA Teacher of the Year

By Mavis Fodness

A third-grade teacher at Luverne Elementary was chosen by her peers as the 2023 Luverne Education Association Teacher of the Year.

Pam Christensen began teaching full time at Luverne Elementary in 2000. She's spent all but one year teaching third-graders.

The annual announcement took place Monday in the Luverne Middle-High School commons and kicked off American Education Week.

"This week we celebrate everyone who works with our students," said Amy Sahly, last year's LEA Teacher of the Year. "Thank you for all the amazing work you do with and for our kids."

The LEA also awarded the 2023 Friend of Education to the school custodial staff. See related story.

Sahly said the nominations for Christensen singled out her caring nature with both students and staff as to why they selected her as their top teacher.

"She genuinely cares about each student and has an individual approach to teaching.



Mavis Fodness photo/1117 Toy 2023

Pam Christensen, a third-grade teacher at Luverne Elementary, is the 2023 Luverne Education Association Teacher of the Year. The award was announced Monday in the Luverne Middle-High School Commons and kicks off festivities for American Education Week, which continued through Friday.

and respect while holding them accountable.

"She's a great listener and take the time to listen to her students fully to understand them. She also displays these qualities with her coworkers.

"She has demonstrated a high level of professionalism and dedication that would be difficult for any to achieve.

"She is amazing." Christensen, an LHS Class of '82 graduate, was influenced to make education her career choice by her teacher parents, the late Konrad and Barb Eidahl. Konrad taught sixth grade and Barb instructed preschoolers. Both inspired their second oldest child to be the best teacher possible.

"I was always drawn to teaching at the elementary level," Christensen said. "Students at this age are excited about learning, and I am excited about helping them reach their potential."

She stressed that get-

Christensen, go to page 5A

"She has a way of helping each student feel loved and accepted. She treats each one of her students — even the challenging ones — with compassion, patience

Fruit Favorites Gift Box

ONLY \$24.99
Special, limited-time offer!
SAVE \$13!
Reg. Price \$37.99

Call 1-855-942-1350 to order item 296X or Visit HaleGroves.com/H3YF51

* Only \$24.99 (reg. \$37.99) plus \$7.99 shipping and handling per pack to 48 contiguous states. Some restrictions may apply. Limit 5 boxes per customer. IC: H3YF51

★★★★★★★★★★★★★★★★

THANK YOU DISTRICT 1 FOR YOUR SUPPORT AND FOR YOUR VOTE OF CONFIDENCE.

★★★★★★★★★★★★★★★★

Paid for by Gary Overgaard on his own behalf

SANTA PIZZA TRAIN

2 Hour Train Ride, Personal Pizza, Soda or Water, Visit to Santa's Private Car for Family Photos, Hot Chocolate and a Cookie

Adult \$40 (13+) • Child \$30

Friday Evening 5pm
Sat & Sun at 11 am, 2 pm or 5 pm
Nov. 4 through Dec. 18, 2022

Reservations 715.635.3200
www.spoonertrainride.com

Rock County **STAR HERALD** Luverne **ANNOUNCER**

EARLY DEADLINES

The deadline for advertising in the November 23 (Wednesday) issue of the **Rock County Star Herald** will be Thursday, November 17 by 10 am

The deadline for advertising in the November 26 issue of the **Luverne Announcer** will be Tuesday, November 22 by 10 am

Questions?
Call 283-2333

HAPPY THANKSGIVING

Our office will be closed Thursday & Friday, Nov. 24 & 25.

You can recycle more than your paper!

You can also recycle:

- + Metal
- + Plastic
- + Glass
- + Paper
- + Cardboard
- + Aluminum

Keep the OCEAN Clean

Has peak life satisfaction passed me by?

(As a grandparent I'm just getting started again)

Are we ever satisfied with the lives we're living?

Does there ever come a time when we don't strive to earn more money, search for that perfect job, that perfect house and family and the perfect relationship? This striving often shows up in the social media posts we share with one another.

Lately I find myself sharing less of myself on social media.

Does this mean my striving in life has waned and I've reached my peak life experiences just south of the age of 60?

According to nationwide polls, it appears I've reached and passed peak life satisfaction.

Did you know the average Minnesotan experiences peak life satisfaction at age 43?

That's according to a survey conducted by Mixbook Photo Co., a technology platform for making photobooks.

It had 3,442 people age 65 and older respond to the survey.

The survey took a deep look at when the average American believed they had obtained peak life satisfaction — a happiness with the trajectory of their lives, jobs, friends, family and relationships.

While Minnesotans indicated their peak satisfaction at age 43, the national average was 44.

Surveys indicated by that time in their lives they had a family, an established career, a stable



RUMINATIONS

By Mavis Fodness, Reporter

home, and hopefully, an income that allowed spending on vacations, cars, dining out, etc.

There were variations between states.

Marylanders reached this point at a relatively young age of 37. Comparatively, Vermonters reached contentedness at age 63.

The survey also found that 52 percent of respondents felt the pandemic increased their satisfaction with life.

I found myself drawing closer to what I have — during the pandemic days in 2020 and 2021.

The result of being quarantined is that we took stock of what's important — spending more quality time with loved ones and appreciating what we have.

It's not so surprising that a photo book company would say relationships and celebrating memories are what people are the happiest with.

I created one of those memories recently, traveling two hours to attend a five-minute school program performance by my oldest grandchild.

It was her first, and a few tears were still falling when she walked on the stage with her fellow kindergartners.

When she caught a glimpse of her parents and her grandparents in the stands, however, a giant smile appeared.

And, yes, her first concert became a social media post — and my satisfaction with life will increase as she grows.

World Kindness Day reminds us to give others 'space and grace'

World Kindness Day was Nov. 13, a day that more than ever before needs recognition.

Here at NAMI Minnesota, we've been promoting "Space and grace," to give others space to err, to be upset or mad. It means giving others grace so that our response to them is not filled with anger or frustration.

When we respond with grace and space, we actually feel better — because we have responded with kindness.

Grace and space also apply to us as individuals — reminders that we're not perfect, that we make mistakes, that we aren't always at our best. It's accepting ourselves as who we are and loving ourselves unconditionally and that we will do better next time.

The Greek Author Aesop wrote, "No act of kindness, no matter how small, is ever wasted."

After a tough two and a half years, we need more acts of kindness toward individuals and our greater communities. We can make a difference to one person, and for the greater good.

This year the theme of World Kindness Day 2022 was "Be Kind

GUEST EDITORIAL

By Sue Abderholden, Director of NAMI Minnesota

Whenever Possible." It's taken from the Dalai Lama who adds, "It is always possible."

So, what is possible? Focus on individuals. Send a kind note to someone. Bring someone who is struggling a meal or rake their leaves. Ask the cashier, clerk or waitperson how they are doing, thank them for their work — especially if you can see that place is understaffed. Bring items to a food shelf, donate blood, place a book in a free library, etc.

So, what is possible? Focus on the greater community. Encourage elected officials to fund important programs that bring people together or support them living in the community.

It could be funding youth programs at the park, arts in the schools, in-home support for people with disabilities or pro-

grams serving children and adults with mental illnesses. Donate to a nonprofit that does good work.

The important thing is to do something to make our communities a little kinder. Stop and think before posting a mean meme on social media, yelling at someone who cut you off on the freeway, or being impatient with a person struggling to pay for their groceries.

We control how we respond, and if we respond with grace and space, and show kindness to others, we will feel better too.

The National Alliance on Mental Illness is a non-profit organization working to improve the lives of children and adults with mental illnesses and their families through education, support and advocacy.



The best part of fall is coming ... the Thanksgiving meal

As you probably know, the season of fall is my favorite time of the year because fall means football and pheasant hunting.

Unfortunately, it also means Old Man Winter is just around the corner.

The cold weather of the past weeks reminds us it's time to make the switch from lawn mower to snow blower. Rakes are replaced by snow shovels, and flip flops are kicked to the closet, with the snow boots front and center.

The calendar tells us the official start of winter is still a month off, so let's not write off fall just yet.



FOR WHAT IT'S WORTH

By Rick Peterson, general manager

There is still a lot of football yet to be played, and watching the Vikings this year has been nothing short of exciting. Some of the best pheasant hunting of the season is yet to come.

Let's not forget about Thanksgiving. It's just a week from today.

The turkey might cost a little more this year, but the turkey is still the best buy in the meat department.

Turkey, stuffing, mashed potatoes and gravy is without question the most economical holiday meal and, in my opinion, the best.

The Thanksgiving meal also

gets bonus points for being No. 1 when it comes to leftovers.

Once again, The Star Herald is collecting greeting cards to send off to our men and women who are serving in our country's military ranks at home and around the world.

We will have a display in the city park with a mailbox for you to drop off your greeting cards. You may also drop off your greeting cards at our office.

Check out the ad in today's Star Herald it's on Page 14A for more details.

**This.
Is.
Your.
Page.**

The Star Herald encourages letters to the editor expressing the opinions of readers and intends to print all letters. See more instructions below.

E-mail: editor@star-herald.com Web site: star-herald.com
Phone: 507-283-2333 Fax: 507-283-2335

Published Thursdays by Tollefson Enterprises
POSTMASTER: Send address changes to
117 West Main, P.O. Box 837, Luverne, MN 56156.
Periodicals postage paid at Luverne,
Permit #33 and at additional mailing offices.

General manager: Rick Peterson
Sales: Wyatt VanSteenberg
Office manager: Deb Lusty
Office assistant: Jennifer Nelson
Production Manager: Heather Johnson
Production: Brooke Huisman

News staff:
Lori Sorenson, editor
Mavis Fodness, reporter
Esther Frakes, copy editor
Greg Hoogveen, sports editor

Rock County
STAR HERALD
Rock County's newspaper since 1873

(ISSN 0889-888X)

SUBSCRIPTION RATES
\$74 per year in Rock County; \$91 per year all other areas.
Single copies \$1.25

Entire contents copyrighted by
Tollefson Publishing Roger Tollefson, publisher

The *Star Herald* encourages letters to the editor expressing the opinions of readers and intends to print all letters. Letters not meeting the guidelines will not be printed. The *Star Herald* will verify the authenticity of all letters. Letters must have the name of the writer, a signature and address. Unsigned letters will not be considered. The *Star Herald* will edit for grammar, spelling and clarity. Any letters containing offensive language, libelous or slanderous material, or misleading or false information will be rewritten before being published. The *Star Herald* will not publish letters written with the sole intent to advertise or serve as a thank-you. Letters with more than 300 words may be edited. The deadline for letters is Monday 10 a.m. They may be delivered or mailed to the editor, **Rock County Star Herald**, P.O. Box 837, 117 W. Main St., Luverne, Minn. 56156.

ON THE RECORD

Dispatch report

- Nov. 4**
- Complainant reported theft.
 - Complainant reported outage.
 - Complainant on County Road 6, southbound from 41st Street, Hills, reported a driving complainant.
 - Complainant on N. Jackson Street reported harassing communications.
- Nov. 5**
- A hazmat issue was reported on County Road 4 and County Road 6, Beaver Creek.
- Nov. 6**
- Extra patrol was provided on County Highway 4, Beaver Creek.
 - Complainant on S. East Park Street reported vandalism.
 - Complainant on W. Maple Street reported an open door.
 - Complainant on County Road 11 and Highway 270, Steen, reported burning.
 - Complainant west-bound on Interstate 90, mile marker 19, Magnolia, reported a driving complaint.
- Nov. 7**
- Complainant reported a civil issue.
 - Complainant on E. Main Street and Summit Street, Hardwick, reported property damage.
 - Complainant on W. Mead Court reported a civil issue.
 - Complainant on 145th Avenue and County Road 8, Luverne, reported an abandoned vehicle.
 - Complainant on Highway 75 and 171st Street, Luverne, reported a parking issue.
 - Complainant on W. Veterans Drive reported a runaway.
 - Complainant on Minnesota Avenue, Steen, reported a runaway.
- Nov. 8**
- Complainant in Luverne reported a civil issue.
 - Complainant reported an outage.
 - Complainant on Central Lane reported a transient.
 - A warrant was issued on 81st Street, Beaver Creek.
 - Complainant on W. Veterans Drive reported a runaway.
 - Complainant on W. Lincoln Street reported trespassing.
 - Complainant on Crawford and Blue Mound Avenue reported suspicious activity.
 - Complainant on S. Donaldson Street reported a disorderly.
 - Complainant on S. Kniss Avenue reported a transient.
 - Complainant on Highway 75, southbound from Pipestone, reported a driving complaint.
- Nov. 9**
- Complainant on Main Street and Kniss Avenue reported suspicious activity.
 - Complainant on W. Church Avenue, Hills, reported suspicious activity.
 - Complainant on S. Dakota Street, Steen, reported vandalism.
 - Complainant on N. Kniss Avenue reported an assault.
 - Complainant on County Road 6 and County Road 4, Beaver Creek, reported roadside assist.
 - Complainant on E. Warren Street reported harassing communications.
 - Complainant on County Road 20 and County Road 13, Hills, reported a driving complaint.
- Nov. 10**
- Complainant on S. Freeman Avenue reported a fire.
 - Complainant westbound on Interstate 90, between markers 8 and 9, Beaver Creek, reported debris.
 - Complainant on N. Kniss Avenue reported a runaway.
 - Complainant on Highway 23, mile marker 10, Beaver Creek, reported a driving complaint.
 - Complainant on 90th Avenue, Luverne, reported a sudden death.
- Nov. 11**
- Complainant east-bound on Interstate 90, mile marker 6, Beaver Creek, reported a driving complaint.
 - Complainant on 110th Avenue and 115th Street, Luverne, reported a driving complaint.
 - Assistance from another department was provided westbound on Interstate 90, mile marker 5, Beaver Creek.
 - Complainant on N. Kniss Avenue reported theft.
 - Complainant on W. Lincoln Street reported a civil issue.
 - Complainant on E. Main Street and Blue Mound Avenue reported debris.
 - Complainant on S. McKenzie Street and E. Warren Street reported a hazmat issue.

In addition, officers responded to 1 motor vehicle accident, 4 deer accidents, 13 ambulance runs, 4 paper services, 7 animal complaints, 2 fingerprint requests, 7 burn permits, 3 alarms, 3 drug court tests, 9 purchase and carry permits, 2 stalled vehicles, 33 traffic stops, 9 abandoned 911 calls, 2 tests, 2 reports of cattle out, 1 OFP and 2 follow-ups.



Lori Sorenson photos/1110 highway 75 smoke test

Where there's smoke ...

... there's smoke testing of sewer lines underneath Highway 75. The work is part of the infrastructure project that closed six blocks of the main corridor north of Main Street in Luverne from Oct. 17 for a month. Smoke testing identifies sections of the sanitary sewer system that may have defects such as cracks, leaks or faulty connections that allow rainwater to enter the underground pipe network. The work also includes spot repairs, new manholes and directional boring of new service lines under the highway. The project is expected to be finished this week.



LEA Friend of Education/from page 3A

are the ones setting up for concerts, games, events and other activities. They are the silent heroes that make our school a wonderful place."

Other comments echoed these sentiments.

"They take tremendous pride in the school and work hard to keep it clean and safe."

Some were more specific. For example: "The custodians are very helpful

in helping unlock doors in the morning for students as well as cleaning snow off the parking lots."

And: "(They are) always willing to go out of their way to help students. Example: Looking everywhere (basement) for a certain size lightbulb for a project."

This year, student comments joined those of the teaching staff.

"Janitors have helped me and countless other

students get their lockers open when the code slips our minds. Being a janitor is a thankless job and it takes a very special person to do it."

At Monday's plaque presentation in the middle-high school commons, the janitorial staff at the event received a standing ovation and applause.

Custodians and their years of service include Randy DeSplinter (10

years), Jason Brecher (12 years), Barry Shelton (11 years), Dwight Smedsrud (11 years), Ron Stuckenbrocker (9 years), Kirk Terrio (3 years), Beryl Moser (1 year), Britton Stratton (1 year), Connor Gumto (6 years), Jonathon Dolo (1 year), David Cutshaw (1 year) and Cory Schmuck (1 1/2 years).

The LEA also honored the 2023 Teacher of the Year at Monday's event. (See related story.)

Christensen/from page 3A

ting to know her students through listening to them goes a long way in education.

"By getting to know my students, I am better equipped to teach to their strengths, identify and intervene on problems early, and find a balance for the different learning styles in class," Christensen said.

"Teaching is a great platform to impact young lives with positivity, kindness and compassion. I look forward to meeting

my new students every fall."

Christensen and her late husband, Tim, have three adult children. Cody lives in Luverne, Matt in Chicago and Stephanie (Tim) Connell and daughter, Callie, live in Maui.

"I am proud to be a teacher in my hometown," Christensen said. "It is my joy to be working with the wonderful staff and students at Luverne schools. All of us working together leads to great results."

Butcher's Deluxe Package

- 4 Butcher's Cut Top Sirloins (5 oz.)
- 4 Air-Chilled Boneless Chicken Breasts (5 oz.)
- 4 Boneless Pork Chops (6 oz.)
- 4 Individual Scalloped Potatoes (3.8 oz.)
- 4 Caramel Apple Tarts (4 oz.)
- 1 jar Omaha Steaks Seasoning (3.1 oz.)
- 8 FREE PureGround™ Filet Mignon Burgers (6 oz.)

71941ALG separately \$225.94
SPECIAL INTRODUCTORY PRICE **\$99.99**

THE BEST STEAKS OF YOUR LIFE OR YOUR MONEY BACK

8 BURGERS FREE

ORDER NOW! » 1.855.402.7187 Ask for 71941ALG
OmahaSteaks.com/GiftGiving3287

Savings shown over aggregated single item base price. Photos exemplary of product advertised. Limit 2. 8 free 6 oz. burgers will be sent to each shipping address that includes 71941. Standard S&H added per address. Offer available while supplies last. Items may be substituted due to inventory limitations. Cannot be combined with other offers. Other restrictions may apply. All purchases acknowledge acceptance of Terms of Use. OmahaSteaks.com/terms-of-use/OSI or call 1.800.226.9872 for a copy. Expires 12/31/22. | Omaha Steaks, Inc.

GREEN EARTH PLAYERS PROUDLY PRESENTS

TICKETS ON SALE NOW

CALL THE PALACE BOX OFFICE
AT: 507-283-4339

OR ONLINE AT: **PALACETHEATRE.US**

November 11 & 12 at 7 pm and November 13 at 2 pm
November 17, 18 & 19 at 7 pm and November 20 at 2 pm

PALACE THEATRE **UPCOMING EVENTS**

Green Earth Players Present:
Elf Jr. The Musical

November 17 - 20

TICKETS ON SALE NOW!

Ticket to Paradise PG-13

Thursday, November 24 7:00 pm
Friday, November 25 7:00 pm
Saturday, November 26 7:00 pm
Sunday, November 27 2:00 pm

Tickets: \$5 for kids age 3 - 12th grade, \$7 for adults

Ring in the New Year with
MASON DIXON LINE!

Saturday, December 31 7:30 pm

The Midwest's premier Country-Rock Band!

TICKETS ON SALE NOW!

104 E. Main St. • Luverne, MN 56156 • 507.283.4339
WWW.PALACETHEATRE.US f @ t w

READ THE NEWS ONLINE!

**Sports
Opinion
News
Classifieds**

Subscribe to the online edition of the
Star Herald

Veterans share stories with students

Luverne Elementary students hosted a Veterans Day Coffee & Treats Open House Friday morning for local veterans. The two-hour event in the school commons was hosted by the fifth-graders and organized by the school's elementary student council. Local veterans and their families were invited to sit at tables with students who had lists of questions for the guests. Students in other grades delivered "thank you" messages scrolled in crayon and pencil.

At right: Air Force veteran Jim McKenzie of Sioux City, Iowa, talks with a group of students that includes his granddaughter Taedra McKenzie, who shared pictures from her grandfather's service in the military.

Below: Kindergarten teacher Cathy Rust takes a picture of student Sadie Zeutenhorst with her great-grandfather, Raymond Sneller of Sioux Falls, a Marine who served in the Korean War.



Above, left: Kindergartner Noah Eggebrecht gives his grandpa, Dale Gertz of Luverne, a thank-you note he colored during class and presented to veterans who attended the Veterans Day Coffee & Treats at Luverne Elementary school Friday morning. **Above, right:** Veteran Jim Klosterbuer shares a laugh with students. Mavis Fodness photos

1943: John Swenson, 86, 'un-retires' to farm again

The following article is part of the Diamond Club Member group that began in the January 7, 1943, issue of the Rock County Star Herald. Members of this group consist of persons of age 75 and older.

The following appeared in The Rock County Herald on June 10, 1943.



BITS BY BETTY

By Betty Mann,
Rock County Historian

That a person is never really too old to begin farming has been demonstrated by John Swenson of Mound township, who held a sale and decided to retire about two years ago, and is now back "in the harness" once more and is happy about it.

Mr. Swenson decided he was going to quit farming so he sold his property and rented the place to his son-in-law and daughter, Mr. and Mrs. Mike Hemmer. He still lived on the farm, however, as he couldn't see where he could gain anything by moving to town, and enjoyed it, although he didn't have quite the same personal interest in the work he had when he was in business for himself. Then came the opportunity to go into partnership with another son-in-law and daughter, Mr. and Mrs. Hans Christensen, which gave him a chance to do some work for himself. Now he is raising hogs, milking cows and doing other work with as much enthusiasm as ever.

Mr. Swenson has lived

in Rock county for 52 years, and has watched it develop from a prairie community of scattered homesteads to its present stage. He is proud of the county, the state and the nation and is grateful for the many opportunities which have been afforded him during the past five decades.

Born May 23, 1867, in Varmiland, Sweden, a place near the boundary line separating Norway and Sweden, Mr. Swenson grew to young manhood in the land of his birth. His father and mother, Mr. and Mrs. Carl Swenson, were farmers, and he learned about farming by helping the family at home until he was old enough to obtain a job as a farm hand for a small sum of spending money. He recalls the first money he earned that he could call his own was in payment for herding sheep.

He received the equivalent of 25 cents per week.

He was the oldest of a family of eight, four boys and four girls. When he was 17, he was permitted to go to Christiania (now Oslo), Norway, because the other children were old enough to help with the work at home. There he worked, helping to build concrete docks in the harbor for a period of three years. The wages were good, and he managed to save a little money.

The money came in handy, for relatives in the United States kept writing for him to come to this country, and he, together with two brothers, decided to make the trip. During the journey, they encountered a storm, making travel perilous, so the boat stopped for one and one-half days until the wind subsided.

The beginning of the trip to Rock county is one that he will never forget, Mr. Swenson states. He and many others had boarded a train to come west, and were just leaving New York when it left the track and went into the river. It was later learned that a switchman had made a mistake, and the train went on the wrong track. Some of the cars rolled over several times before landing in the water, but the coach he was in was not badly damaged and he managed to get out. Many people were killed and others were seriously hurt. Six

doctors were rushed to the scene to administer medical aid, and another train was sent to pick up the passengers who had escaped unharmed. All his personal belongings, which consisted of a trunk and satchel full of clothing and other personal effects were lost.

When he arrived at Beaver Creek, he was met by an uncle, and the late Fred Norelius, for whom he worked during the year of 1899. Then he started to work for Elmer Gates at a salary of \$18 a month, the biggest wages they were paying at that time for farm help. After working there for three years, he began farming for himself.

On Nov. 25, 1895, Mr. Swenson was married to Ida Jaqua in Battle Plain township, and from the first of March the following year, they lived with Mrs. Swenson's parents.

That spring, they became engaged in farming for themselves. Their first two years of married life were spent on a farm in Beaver Creek township. From there they moved to Mound township, and lived there seven years before they moved to Springwater township where they remained another seven years. In 1908, they purchased the southwest quarter of section 30, Mound township, from Dr. Vail, and this has since

Bits, continued on 7A

REMEMBER WHEN

10 years ago (2012)

•Luverne Brew Partners has announced plans for a new craft brewery at 505 and 509 East Main Street in Luverne.

It will occupy the former Connell Luverne Building at the corner of Main Street and Blue Mound Avenue and the Sturdevant Auto Supply building to the west of the former Connell building.

The brewery's first batch of craft beers is expected to be available in the summer of 2013.

Luke Rensink, Sioux Falls, founder and former partner in Hesit Brewery, has been hired as head brewer. Bo Belanger, owner and founder of South Shore Brewery in Ashland, Wis., brings his skills as master brewer and has been hired as project consultant.

25 years ago (1997)

•Day care in Rock County got a boost Monday when the Luverne City Council approved a \$25,000 donation to the Rock County Day Care Center Corporation. The money is designated for renovation and lease costs to convert an existing downtown building into a day care center.

The city donation is part of the estimated \$200,000 needed for the project's start-up expenses. ...

The center will need an estimated 4,000-square-foot area to serve about 70 children.

50 years ago (1972)

•"If I had it to do over again, I don't think I'd change a thing." Those are the words of Virgil Thompson, who Wednesday completed 25 years of delivering milk to homes throughout the city of Luverne.

The greatest satisfaction he has had, he said, is that of the close relationships which have developed between himself and his customers over the years, and being able to work at a vocation that permitted him to be out of doors.

75 years ago (1947)

•The total number of deer hunters representing Rock county in the north woods for the opening of the deer season increased to 122 this week with 77 additional licenses having been sold since last week's news story was printed.

County Auditor Koehn believes this year's number is an all-time record for Rock county, the total exceeding last year's figure by six.

100 years ago (1922)

•Beginning this week all parcel post received at the postoffice in Luverne will be delivered by carrier regardless of whether the addressee of the parcel has rented a postoffice lock box or not, except in the case of general delivery parcels, when the addressee is a transient or when his street address is unknown or when he resides outside of the city delivery windows.

This is being done to relieve congestion in the postoffice and relieve clerks from the handling of parcel post at the delivery windows.

Parcel post for the business district will be delivered first to avoid inconvenience caused by delay of receiving goods. Residence districts will be served next.

MENU AT GENERATIONS

Monday, Nov. 21: Tuna noodle casserole, mixed vegetables, warm cinnamon applesauce, dessert.

Tuesday, Nov. 22: Barbecue pork on a bun, coleslaw, vegetarian baked beans, warm fruit crisp.
Half-Price Day spon-

sored by Minnwest Bank.

Wednesday, Nov. 23: Turkey with gravy, mashed potatoes, corn, dinner roll, dessert.

Thursday, Nov. 24—Closed. Happy Thanksgiving!

Friday, Nov. 25: Tater

tot hotdish, green beans, romaine lettuce with dressing, dinner roll, warm apple slices with raisins.

LSS Dining offers well-balanced and affordable meals in a community atmosphere.

Call Pam Franken at 283-9846, extension 11 to reserve one day prior, to arrange to pick up a dinner or for home-delivered meals.

Gift certificates are available at the meal site or online at www.lssmn.org/nutrition.

OBITUARIES

Sandra Winter

Sandra "Sandy" Ann (Popken) Winter, age 80, died at her home on Thursday, November 10, 2022, under hospice care after being diagnosed with Stage 4 lung cancer on October 27, 2022.



Memorial visitation will be Saturday, November 12, beginning at 1 p.m. with a memorial service at 3 p.m., all at Bethany Lutheran Church in Luverne. Burial will be held later at Pleasant View Cemetery near Luverne. Memorials may be given to the Bethany Lutheran Church Helping Hands mission fund. To sign an online registry, please visit www.hartquistfuneral.com.

Sandra "Sandy" Ann (Popken) Winter, age 80, died at her home near Luverne, Minnesota, on Thursday, November 10, 2022 under hospice care after being diagnosed with Stage 4 lung cancer on October 27, 2022.

Sandy was born May 11, 1942, to Otto and Emma (Marineau) Popken in LeMars, Iowa. The youngest of 17 years of six siblings, she grew up playing with nieces, nephews and cats on farms in Sioux County, Iowa, and south of Luverne, Minnesota. She attended the Ash Creek country school and graduated from Luverne High School in 1959.

She met Gerald Winter at a Luther League roller skating party when she was 15 and married him a month after her 18th birthday in June of 1960. They spent the next 62 years raising livestock, crops and kids on their farm seven miles southwest of Luverne.

Sandy was a mom, a grandma and a great-grandma. Her greatest accomplishment in life was giving her children, Mike (1962), Brenda (1963), Lori (1964), and Sarah (1982) good soil in which to plant their own gardens. She delighted in snuggling and rocking each one of her 17 grandchildren as babies and then watching them become gifted musicians, athletes, scientists, dancers, salesmen, managers and parents. She planted and harvested a fall crop of radishes with a great-granddaughter this fall.

Sandy was a motorcyclist. In their years together, Sandy accompanied Gerald on countless motorcycle trips including across Alaska in 2003. When "caboose" daughter Sarah was about to join the family, Sandy told Gerald, "We're going to need a sidecar." And he knew what she meant. The three of them repeated the camping trips and travels the older three kids had enjoyed 20 years earlier.

Sandy was employed seasonally at Wally's Nursery in Hills, Minnesota, for 40 years, retiring in 2015. She enjoyed the plants and the customers who shared her

love of gardening. Some of her grandchildren delighted in "got-to-work-with-Grandma day" and got to pull the plant wagon with her.

Sandy was a gardener. In the spring, her sunroom was filled with hundreds of seedlings. In the summers she tended a massive garden and shared the abundance with friends and family. She spent the fall canning, freezing and drying the harvest. Sandy spent the winter months perusing seed catalogs and waiting for spring.

Sandy was a quilter. Every wall of her home displays a quilted panel celebrating beauty, colors and patterns. Several unfinished quilts and countless bins of fabric remain in her sewing room. Sandy was a bookkeeper. A high school business teacher recommended her for the secretarial position at Luverne City Hall which she held from 1959 until Mike was born. She kept the farm books and served as the financial officer for Bethany Lutheran Church from 2010 until last Sunday.

Sandy was a listener in a family of talkers. She said her secret to a successful marriage was "not saying everything you think."

Sandy was a follower of Jesus Christ. She used her final days and nights well. She said a special goodbye to as many of her grandchildren as could visit, telling them how much she loved them and reminding them to love Jesus and be good.

When it became difficult to sleep at night, she spent the hours "counting my blessings, singing 'praise God from whom all blessings flow' and praying for Gerald."

She died with a Bible and a seed catalog on her nightstand and her family by her side.

Sandy is survived by her husband, Gerald; children Mike (Karen) Winter, Brenda Winter (Jim Juhl), Lori (Dave) Tingle, and Sarah Winter (Clayton Peters), all of Luverne; grandchildren, Trenton (Sydney) Winter, Jess (Kyle) Connelly, Brandon, Austin and Jordan Winter; Emilia (Adam) Simmons, Joe (Jennifer) Juhl, Kate Juhl; Bo Bieber, Jackson Winter, Sydney Bieber, JaShon and Kianna Winter, Kaleah and Kingston Woods, Danika and Isaiah Peters; and 10 great-grandchildren Charlie, Harrison and Isla Winter; Nathanael, Fisher, and Christian Connelly; Evelyn and Lillian Simmons and Tenley and Addison Juhl; and a sister, LuElla Karr, Hayward, Iowa.

She was preceded in death by her parents and four brothers, Kenneth, Darrel, Arnold and Wayne Popken.

Memorials may be given to the Bethany Lutheran Church Helping Hands mission fund.

(1117 V)

Joan Michelsen

Joan Carol Michelsen, 82, of Grace Lutheran Church Magnolia, died Monday, Nov. 14, 2022, at the Tuff Memorial Home in Hills.

Visitation will begin at 9 a.m. Friday, Nov. 18, and a funeral service will be at 10:30 a.m., all at Grace Lutheran Church in Luverne. Burial will follow at Maplewood Cemetery in Luverne.

Joan Kjelden was born on July 18, 1940, to Alf and Lilly (Hemmingson) Kjelden in Watertown, South Dakota. She attended school and graduated from Watertown High School in 1958. She worked for a short time and then enrolled in the School of Practical Nursing in Mitchell, South Dakota, where she earned her degree as a Licensed Practical Nurse (LPN). Following nursing school, Joan took a job at the Luverne Medical Center in Luverne. It was here that she met her future husband, Wayne Michelsen.

The couple was united in marriage on Nov. 21, 1964, at Grace Lutheran Church in Luverne. They lived on their farm near Magnolia. Joan worked various jobs throughout her life, including real estate agent, church youth director, and a rubber stamp card maker. Due to her declining health, Joan became a resident at the Tuff Memorial Home in Hills in September 2019.

Joan was a member

of Grace Lutheran Church where she participated in circle, directed youth choirs, taught Sunday School, led the WINGS program, and served as the superintendent of Sunday School. She enjoyed crafts, was a talented card maker and had a soft spot



for animals. She loved spending time with her family and was grateful to be an active part of her grandchildren's lives. She enjoyed attending as many of their activities as possible.

Joan is survived by her husband, Wayne, of Magnolia; children Angela (Dave) Swenson of Sioux Falls, South Dakota, and Stacey (Bradley) Hustoft of Luverne; seven grandchildren, Christopher Vickery, Jamie Vickery, Brittany (Lance) Van Der Weerd, Matthew Schmuck, Mona-ya Hustoft, Zayna Hustoft and Jacinda Hustoft; three great-grandchildren, Mad-die, Karlie and Jackson Van Der Weerd; siblings Lyle Tofteland of North Chicago, Illinois, and Lynna (Ron) Christensen of Sioux Falls; and other family.

She was preceded in death by her parents and her son-in-law, Todd Schmuck.

Memorials are preferred to the Grace Lutheran Church Youth Fund.

Arrangements are provided by Hartquist Funeral Home of Luverne, hartquistfuneral.com.

(1117 F)

Carrole Horn

Carrole Lee Horn, 82, of Beaver Creek, died Saturday, Nov. 12, 2022, at the Sanford USD Medical Center in Sioux Falls, South Dakota, surrounded by her family.

A memorial service was at 10 a.m. Wednesday, Nov. 16, at the Palisade Lutheran Church in rural Rock County. Burial was in the Beaver Creek Cemetery.

Carrole Emery was born on Jan. 1, 1940, to Milo and Edna (Samuelson) Emery in Sioux Falls, South Dakota. She graduated from Beaver Creek High School in 1957 and from Nettleton Business College in Sioux Falls in 1984.

Carrole married Harvey Horn on May 31, 1958, at St. John Lutheran Church in Luverne. After their marriage, the couple lived in rural Luverne. They later moved to rural Hardwick.

After Harvey's death in 1981, Carrole moved into Luverne. She moved to the place where she grew up in rural Beaver Creek in 1995. Carrole worked in Personal Lines and Specialty Insurance at Tri-State Insurance in Luverne. She later worked as a custodian at the Luverne Public School and as a caregiver at Poplar Creek Estates.

She was an active member of Palisade Lutheran Church in rural Rock Coun-

ty, where she served as president of the WELCA for over 20 years and on the building committee. She was a member of the Extension Club and bowling league, and she served as a 4-H leader and a Girl Scouts leader.

She enjoyed sewing, gardening, cooking, canning and very much enjoyed her children, grandchildren and great-grandchildren.

Carrole is survived by her six children, Candace (Michael) Reese of Luverne, Kimberly (Jeffery) Wells of Big Lake, Judith (Rick) Teune of Bourbonnais, Illinois, Harvey M. (Dawn) Horn of Zimmerman, Valarie (Michael) Kastner of Slayton, and Melinda (Jack) Bendix-Horn, of Lenexa, Kansas; 12 grandchildren, Alyssa, Samantha, Joshua, Dustin, Taylor, John, Tanner, Tucker, Katarina, JT, Kyle and Jason; and 15 great-grandchildren.

She was preceded in death by her parents; her husband, Harvey; and a granddaughter, Deanna Joy Green on Nov. 12, 1997.

Arrangements were provided by Dingmann Funeral Home of Luverne, dingmannandsons.com.

(1117 F)

John Ruddy

John Anthony Ruddy, 74, Beaver Creek, died Tuesday, Oct. 25, 2022, at the Sanford Luverne Medical Center.

Arrangements will take place at a later date with Dingmann Funeral Home of Luverne.

John Ruddy was born Nov. 1, 1947, to Cletus and Carol (Larson) Ruddy in Luverne. He graduated from Luverne High School in 1965.

John married Karen Dubas on June 15, 1973, at the Church of St. Andrew in Elk River.

The couple lived in Elk River before moving to Brooklyn Center in 1976. John worked as a diesel mechanic at Rapid Way in St. Louis Park. They moved to an acreage near Beaver Creek in 1987. John worked at IBP in Luverne.

He was a member of St. Catherine Catholic Church in Luverne and of the Luverne Lions. He enjoyed his family, the outdoors and

all kinds of animals.

John is survived by his wife, Karen Ruddy, Luverne; son Shawn Ruddy of Luverne; daughter Renae Ruddy of rural Beaver Creek; three grandchildren, Katrina, Kailey and Karter John Ruddy; sister Corrine Nath



of Luverne; and three brothers, Darrell Ruddy of rural Luverne, Robert (Gloria) Ruddy of Ostego, and David (Rose) Ruddy of Luverne.

He was preceded in death by his parents; an infant granddaughter, Carissa Ruddy in 2005; brothers Loren "Bud", Michael, Gene, Dale, James and Donald Ruddy; and sisters Mavis Wahlert, Patricia Miller, Delores Kasemodel, Marilyn Palmer, Judy Craig and an infant sister, Theresa.

Arrangements were provided by Dingmann Funeral Home of Luverne, dingmannandsons.com.

(1117 F)

Daniel Siegfried

Daniel Lee Siegfried, 72, of rural Valley Springs, South Dakota, died Wednesday, Nov. 9, 2022, at his home.

A memorial visitation was Wednesday, Nov. 16, from 10 a.m. to noon at the Hartquist Funeral Home in Luverne.

Daniel Siegfried was born on June 1, 1950, to Lester and Bette (McKay) Siegfried in Redwood Falls. He grew up on a farm and helped his parents with the milk cows. He graduated from Redwood Falls High School, having participated in student council, plays, and the track team.

Dan attended the University of Minnesota, Morris, where he met his future wife, Mary Finke. Dan and Mary were married in 1971 at the United Methodist Church in Luverne. Following their marriage they moved to a farm place near Hills.

Dan farmed many years of his life and also had a long career in the crop insurance business. Dan served on the local township board, school board, Co-op Elevator Board and was a member of the Masons.

In his retirement years, Dan was his wife's caregiver in her Parkinson's disease process. Dan and Mary provided a steadfast example of love and commitment to their children and grandchildren.

Dan loved his family, people, travel, history, hunting, fishing, cooking, baking and classic cars.

Dan is survived by his wife, Mary; his children Michele Baker of Sioux Falls, South Dakota, Mike (Beth) Siegfried of Worland, Wyoming, and Angie (Jon) Steinbach of Montevideo; his grandchildren, Peyton, Karlee, Abby, Anna, Victor and Quinn; and a great-grandchild, Skylar; siblings Gary (Diane) Siegfried of Redwood Falls, Dennis Siegfried of Maple Grove, Julie (David) Lawson of Le Roy, Sue Bowen of Morton, and Rick (Denise) Siegfried of Redwood Falls; and other relatives and friends.

He was preceded in death by his parents and his sister-in-law Vicki Siegfried.

Arrangements were provided by Hartquist Funeral Home of Luverne, hartquistfuneral.com.

(1117 F)

Bits/from page 6A

been the Swenson home.

Mr. and Mrs. Swenson were the parents of eight children, all of whom are living. They include Charlie, Walter, Chester and Edwin Swenson, all of Springwater township; Mrs. Mike (Esther) Hemmer, Luverne township; Mrs. Myrble Newberg, Beaver Creek; Mrs. Ivan (Edna) Anderson, Spokane, Wash. and Mrs. Hans (Gladys) Christensen with whom Mr. Swenson lives on the home farm in Mound township.

Mrs. Swenson died

April 16, 1930, and his two brothers, Emil and Gus, who came to this country at the same time as Mr. Swenson did, are also dead. He has one brother living in Sweden, and at one time had three sisters in Norway, but he does not know if they are living at the present time or not.

He has 30 grandchildren, one of whom is Carl Anderson, former Luverne boy, who is now serving with the U.S. Navy. He is the son of Mr. and Mrs. Ivan Anderson of Spokane.

CELEBRATIONS

Card shower

Betty Mulder celebrated her 80th birthday on Wednesday, Nov. 9. Greetings may be sent to her at 503 Rapp Street, Luverne, MN 56156.

READ US ONLINE!
star-herald.com

SAVE THE DATE

WORTHINGTON AREA Symphony Orchestra

WATER MUSIC!

TUESDAY, NOVEMBER 22, 2022
7:30 P.M.

DR. CHRISTOPHER STANICHAR,
CONDUCTOR

FEATURING
PREMIERE OF "MINNESOTA LAKES"
COMPOSED FOR W.A.S.O. BY DR. STANICHAR

& TCHAIKOVSKY'S "SWAN LAKE SUITE"
WITH DANCE ACADEMY DANCERS

MEMORIAL AUDITORIUM
714 13TH STREET • WORTHINGTON, MN

ADULT TICKETS - \$15
STUDENT TICKETS - \$5

All tickets reserved and sold at the Auditorium Box Office
507.376.9101 • www.friendsoftheauditorium.com

This activity is made possible by the voters of Minnesota through a grant from the SW MN Arts Council, thanks to a legislative appropriation from the arts and cultural heritage fund.

Youth wrestling club starts in Hills

Offering to expand athletic options for Hills, Beaver Creek, Steen youth

By Mavis Fodness

Jamie Terry wants children in the Hills-Beaver Creek-Steen areas to experience wrestling this winter.

The Hills' Aces Youth Wrestling Club will have an organizational meeting and practice from 6:30 to 7:30 (tonight) Thursday, Nov. 17, at the Game Plan 4 Hope Team E Fieldhouse in Hills.

Terry sees wrestling as another athletic option to the traditional girls' and boys' basketball programs.

"Hills-Beaver Creek (School District) has a great group of coaches and athletic opportunities already available, so we are not looking to pull kids from any one program to another," she said.

"We see a lot of older kids year after year who are not engaged in the current offering of winter sports, most of which we see in other sports for different reasons."

Wrestling has been a positive activity for her own four young boys.

"We stress to our boys that hard work, accountability, discipline and determination play a big part in everything you do in life," Terry said.

"It is very rewarding to see all of their work pay off for them when they improve. We would love to see others who participate in the Hills' Aces club grow and improve in the same ways."

Terry's children wrestled through the Luverne Area Youth Wrestling club, which is open to pre-kindergarten through sixth-grade students.

"We have several H-BC students who love to wrestle and, as the current circumstances stand, they can only wrestle up to sixth grade as a club sport in Luverne," Terry said.

"At that point, they either end their career or change schools, as there is no co-op agreement to allow them to continue beyond that point."

Terry hopes in the coming years another co-operative agreement could be put into place to bring wrestling back to the high school level for H-BC students.

In the meantime, Hills' Aces will be open to both girls and boys in pre-kindergarten through eighth grade.

Participants can choose to wrestle at area youth tournaments with a possibility of competing at the Minnesota state youth wrestling tournament.

Parent volunteers will be this year's Hills' Aces coaches and wrestling instructors.

"Dalton Engelkes and Dusty Seachris, both former wrestlers, are slated to head up the coaching with several others volunteering to lend a hand and support them where needed at practices and meets," she said.

For its inaugural year, no membership fees are charged. "We would like to strongly encourage those who are able to please make any donation that you can to Game Plan 4 Hope in lieu of registration to the club," Terry said.

For more information about Hills' Aces Wrestling Club, contact Terry at 605-496-2353 or jamie.terry1107@gmail.com.



Contributed photo

Piper Wynia was recently recognized by the Minnesota State High School Clay Target League for her shooting average during the five-week fall trapshooting season. The Luverne High School sophomore had the second-highest season average in Conference 9 with a 22.3 out of 25.

LHS sophomore recognized for target shooting average

By Mavis Fodness

Piper Wynia, a sophomore at Luverne High School, achieved the second-best average this fall in the Minnesota State High School Clay Target League.

Through the five-week fall season, Wynia averaged 22.3 out of 25 shots in one round, and she had two perfect 25s.

"I did it the first night of league (Sept. 19) and the last night of league (Oct. 24)," Wynia said.

"I was scared I would miss the last one, but when I hit it (the last clay), I let out a breath to the cheers of everyone. It's pretty cool."

Also shooting Perfect 25s during the fall season for the Luverne High School team were teammates Alex Dewispelaere, Landon Ahrendt and Chase Matthesen.

Topping Wynia in the Conference 9 shooting average was Alexis Schweiss from Gibbon-Fairfax-Winthrop with a 22.9 average.

James Meyer Jr. of Tri-City United High School had the top boys' season average of 23.7.

Wynia joined the trap shooting team as a sixth-grader, following in her sister Leah's footsteps.

This summer she joined the summer trap league, shooting with her mom, Julie, and dad, Ryan.

Coach Scott Loosbrock noticed the extra work made the difference in increasing Wynia's shooting average.

"She worked really hard and did a fabulous job getting there," he said.

Loosbrock organized the grades 6-12 trapshooting team in the spring of 2017 with the focus on the spring season.

The fall season is primarily used as practice for the spring season.

"All the kids did well this season," Loosbrock said. "The more they do it, the better they get."

Loosbrock said he is excited for the upcoming spring season, which may be his last.

"I'm running out of time during the day," said Loosbrock, who operates his own business. "I'm not stepping down, but I'm looking for someone this spring to be the head coach."

Several volunteers already assist students during the one-night-a-week league shoot, which Wynia said has taught her the shooting fundamentals.

"I like the coaches because they are so encouraging," she said.

Wynia also likes that the team doesn't travel. All shooting is done at the Luverne Sportsmen's Club.

Only the state championship and MSHSL state tournament are conducted elsewhere.

Anyone interested in being head coach should contact Loosbrock at 507-360-5418.

Luverne Taekwondo athletes compete in Midwest Championships in Tea, South Dakota, Nov. 5.

By Lori Sorenson

Several members of Luverne Taekwondo competed at the 38th Annual Midwest Taekwondo Championships in Tea, South Dakota, Saturday, Nov. 5.

In the Women's Black Belt division, Haley Tollefson placed third and Peggy Johnson was fourth in sparring. Johnson was also fifth in Individual Forms.

In the Junior Girls 15-17 Black Belt Division, Perceyis Trierweiler was second in sparring. She and Reagan Gangestad were also third in team forms.

Gangestad was also fourth in sparring and third in individual forms in the Junior Girls 12-14 Black Belt Division.

In the Juniors Girls 9-11 Colored Belt Division, Alexandra Gangestad was third in sparring.

The Luverne competitors were coached by Grand Master Wes Grieme, head of the Luverne taekwondo program, and 5th Dan Master Suzie Walgrave.

The five Luverne athletes were among the approximately 180 competitors registered for the Midwest Taekwondo Championships, which were last held in 2018.



Submitted photo

Five Luverne athletes were among roughly 180 competitors at the Midwest Taekwondo Championships in Tea, South Dakota, Saturday, Nov. 5. They are (front, from left) Haley Tollefson, Alexandra Gangestad, (back) Master Suzie Walgrave, Peggy Johnson, Reagan Gangestad, Perceyis Trierweiler and Luverne Taekwondo Grand Master Wes Grieme.



THE OUTDOORS

By Scott Rall
Outdoors columnist

What to do about 'bird bandits'

There is just never a dull day in the field when you share it with four Labradors.

I have a great start to the 2022 pheasant season. Bird numbers are far higher than last season and the only challenge has been the high temperatures.

The first weekend of the season we hosted the Minnesota governor in Worthington. That was a pretty big undertaking. The second weekend of the season we hosted 17 American war heroes from all over the United States. And in between this all I have managed to get out a few times to chase roosters.

Dog training is a never-ending effort. You can have a dog trained to a high level; I call this high and tight, like a Marine Corp haircut, and if you let off the training gas, this same dog can fall back into some very poor habits in a very short time. I guess a better term might be training retention.

I have been associated with a professional training facility since 1996. We train hunting dogs for customers from all over the country. We have sent home some very fine dogs, and with little to no effort expended by the owner to maintain their knowledge and skills, these same dogs can look like they received no formal training at all when we see them 12 months later.

My current training challenges are not anything new but can still be a challenge to fix. My newest dog, Ghost, is a bird-stealing little bandit. If he is not the first one to the fall and the first to pick up the bird, he will try to steal that bird from whichever other dog has it. This can end up with a bird that does not look as good as it should.

My old adage is to always allow every dog to go to where the bird fell. This gets the maximum number of noses on the ground in case the bird is not completely dead and has a propensity to run off and hide to a point where the dogs cannot find it.

Lost cripples are a real drag. With the fall being as dry as it has been, the scenting conditions have been just awful. I have not lost a bird yet this season and hope to be able to say the same thing when the season closes on or about Jan. 1, 2023.

The other issue I am dealing with is if Ghost is the first to the bird, in an attempt to be sure no other dog tries to steal it from him, he will run off with the bird in his mouth. Only when all the others dogs are back by my side will he come running in to deliver his prize.

My solution is called a "set him up" activity. I will sit one dog by my side and make all of the other dogs sit about 35 yards away. I will give the command "sit," and with all the dogs complying, I will toss a bird 20 yards from the dog at my side, 50 yards from all of the others. I will then release them from the sit command, and every dog will tear up sod trying to be the first to make the retrieve. When the closest dog has the bird in his mouth, I will give a



I solemnly swear ...

Tara Zewiske takes her oath of office from Mayor Pat Baustian Monday morning in Luverne City Hall Council Chambers as a new board member of the Luverne Economic Development Authority. She is fulfilling the remainder of Mike Engesser's term, which expires January 2023, and then will serve a six-year term set to expire January 2029. (Submitted photo)

COMMUNITY CALENDAR

Mobile dental clinic Nov. 30 and Dec. 1

The mobile dental clinic will be in Luverne on Wednesday, Nov. 30, and Thursday, Dec. 1, at the Rock County Health and Human Services community room.

This clinic provides dental care for adults and children ages 0-100+. Call 612-746-1530 to schedule an appointment. All forms of insurance are accepted. The clinic is organized by #Luv1LuvAll's Rock County Oral Health Task Force.

Free Narcan training Dec. 5

A free public training on how to respond to an opioid overdose using Naloxone (Narcan) will be from noon to 1 p.m. or 4:30 to 5:30 p.m. Monday, Dec. 5, at Sanford Luverne. Registration is preferred by Nov. 28. Call 507.449.1246 or email stephanie.pierce@sanfordhealth.org.

St. John Festival of Nativities Dec. 2-3

St. John Lutheran Church, Luverne, will host its Festival of Nativities from 4 to 7 p.m. Friday, Dec. 2, and from 9 a.m. to 3 p.m. Saturday, Dec. 3. View nativities of all sizes and shapes, from handcrafted and international to children's sets and more. Refreshments will be served. It's free and open to the public with handicap accessibility. Call 507-283-2316 with questions.

Library Happenings

For more information about library happenings, call 507-449-5040 or email rock-countystaff@gmail.com.

Story Time with Bronwyn is Fridays from now through Dec. 2. The event starts at 10 a.m.

Rall/from page 8A

"here." The collar correction is not for him trying to get the bird but for failure to comply with the well-known command "here."

This results in two things. The first result is that Ghost will not develop a negative response to birds, i.e., I am chasing the bird and get a negative correction when trying to do so. This is the last thing we want. We want him to want the bird with all his might. He will instead understand the second thing, that he must comply with "here" each and every time.

This training is not difficult in short grass where you can see everything developing in real time and know exactly when to make the command and the corresponding corrections. This is far more difficult in grass that is 4 feet tall where you cannot see when and who has the bird and exactly when they found it.

In a normal outing, my four black Labradors, whom I affectionately call my black attack pheasant pack, will each make a few retrieves. No one dog will be the first to fall each and every time. No one dog will outperform

his three other competitors. If one dog comes back with all the birds every time, you know something nefarious is going on in the tall grass when you cannot see.

Working to fix this issue in short grass will ultimately result in proper behavior in the tall grass. You just need to stay focused and make corrections when you can.

Ghost is much younger than the others and he is really fast. I just need to make sure, as you should too, that each bird is brought to hand in a condition that does not make it look like it got hit by a car at 55 mph.

Dog training is a continual process. Understand that, and you will be a much more satisfied dog owner and end up with much better results.

Scott Rall, Worthington, is a habitat conservationist, avid hunting and fishing enthusiast and is president of Nobles County Pheasants Forever. He can be reached at scottarall@gmail.com. or on Twitter @habitat champion.

Blue Mounds park/recreation area to close during special hunt Nov. 19-20

Blue Mounds State Park will be closed to all visitors on Nov. 19 and 20 for a special deer hunt. The purpose of the hunt is to prevent overpopulation of deer and to protect natural resources.

"Too many of one animal or plant species in an area can start to throw off the balance of other species in that area," said Tavis Westbrook, Natural Resource Program coordinator for Minnesota State Parks and Trails.

"When there are too many deer in a park, they feed too much on certain trees and native plants, so

occasionally we allow deer hunts as a way to protect natural resources and bring the deer population back into better balance."

Hunts also will take place at some other Minnesota state parks and recreation areas this fall, and access to these areas will vary. Some will remain open to all visitors, some will have limited public access and some will be open only to hunters with special permits.

The deadlines have passed for youth and adults to apply for the permits to participate in the hunts.

The Minnesota Department of Natural

Resources thanks visitors for their patience and understanding during the hunts.

For a list of state parks and recreation areas that are open, partially open or closed during the 2022 hunting season, visit mndnr.gov/parkhunts, contact the DNR Information Center at info.dnr@state.mn.us or call 888-646-6367 (8 a.m. to 6 p.m. Mon.-Fri., 8 a.m. to 4:30 p.m. Sat.).

Details on which areas of each park affected by the special deer hunts can also be found in the "Visitor Alert" boxes on the individual park website pages at mndnr.gov.

You can get stronger. Rehab therapy can help.

Completing the tasks of everyday life can be overwhelming after an illness or injury. Our outpatient rehabilitation therapy team at the Good Samaritan Society provides individualized support during every phase of your recovery.

When you're facing physical challenges or need help with speech, language or swallowing, we'll help you heal faster so you can get back to living. We have services to support people of all ages.

Learn more about our outpatient therapy services at good-sam.com



 Good Samaritan Society®

A healthy home starts with healthy air.



LENNOX

Air is life. Make it perfect.

RECEIVE UP TO
\$1,200
IN REBATES
on a complete Ultimate Comfort System.*

 **McClure**
PLUMBING, HEATING, AIR CONDITIONING, INC.

Luverne, MN

(507) 449-2828

412 S. Kniss, Luverne, MN 56156

Offer expires December 2, 2022. *Rebate requires purchase of qualifying items between September 12, 2022 to December 2, 2022. Qualifying items must be installed by December 9, 2022. Rebate claims must be submitted (with proof of purchase) to www.lennoxconsumerrebates.com no later than December 23, 2022. Rebate is paid in the form of a Lennox Visa® Prepaid card. Prepaid Card is subject to terms and conditions found or referenced on card and expires 12 months after issuance. Conditions apply. See www.lennox.com/terms-and-conditions for complete terms and conditions. © 2022 Lennox Industries Inc. Lennox Dealers are independently owned and operated businesses.

Star Herald CHURCH

Page 10A November 17, 2022

The best is yet to come

As a little boy I was always looking forward to something. When will Grandpa and Grandma get here? How many more days until Christmas? When is Dad coming home from work? When is supper? When can we play a game, fix a puzzle, read a book, or watch Captain Kangaroo?

As I got older, I was still looking forward to many things. I couldn't wait until I was old enough to drive, get my first job, buy my first car, or graduate from high school.

Then I couldn't wait until I was finished with college and started working full time.

I asked my wife to marry me with the wedding date over eight months later, and those eight months seemed like forever.

I couldn't wait because I was always looking forward to something. I guess the reason this was true is because I believed that the best was yet to come.

I still believe the best is yet to come, and I want to challenge all of us to live that way.

In the book of Exodus, God, with his mighty hand and outstretched arm, leads the people of Israel out of Egypt. God parted the Red Sea, and the people crossed on dry land. They escaped Pharaoh and his mighty army through God's miraculous protection.

Now safe on the other side out of their enemy's reach, one would be certain that the people would believe that the best is yet to come. However, the people complained and they looked back. They wished they were still slaves in Egypt.

BUILT ON A ROCK

By Pastor Jeremy Wiersema, The Reformed Church of Steen

God has a plan and a purpose for each of us.

For some reason, they did not believe that the best was yet to come. Why did they look back with so much fondness on the days of their captivity? Why do we sometimes look back in our own lives at the good old days? Why do we try to live our adult lives looking back in time? Don't we believe the best is yet to come?

God has a plan and a purpose for each of us. He wants what is best for me and he wants what is best for you. Therefore we need to teach ourselves to look forward much more than we look backward. Otherwise we risk making the same mistakes the Israelites did.

Today we all need to make a choice. Will we choose to believe that with God's leading in our lives, the best is yet to come? Or will we choose to live like our best days are behind us?

Join me and let's look forward together!

St. Catherine Catholic Church

203 E. Brown St., Luverne
St. Catherine Ph. 283-8502; www.stscl.org
Monsignor Gerald Kosse, Pastor

Sundays 8:30 a.m. Mass. Public Mass will be celebrated at FULL capacity in the church. Masses: 9 a.m. Wednesdays, 10 a.m. Friday at the nursing homes – check the bulletin. All Sunday masses will be live streamed on Facebook at <https://www.facebook.com/pg/stscluverne/videos/>. Visit www.stscl.org for more information.

Luverne Christian Reformed Church

605 N. Estey St., Luverne
Office Ph. 283-8482; Prayer Line Ph. 449-5982
www.luverneccrc.com – office@luverneccrc.com

Sundays 9:30 a.m. Worship service. 6:30 p.m. Evening worship service. We are streaming Sunday services live on YouTube at 9:30 a.m. and 6:30 p.m. Send him a friend request if you're not connected. You may also visit our website for delayed broadcasts. Also our services are on local cable TV at 5:30 p.m. on Wednesdays and at 6:30 p.m. on Thursdays. In all circumstances, may we joyfully declare: "Our help is in the name of the Lord, the Maker of heaven and earth." Psalm 124:8.

First Baptist Church

103 N. Jackson St., P.O. Box 975, Luverne
Ph. 283-4091; [email: fbcluv@iw.net](mailto:fbcluv@iw.net) – www.fbcluverne.org
Walt Moser, Pastor

Sundays, 10:30 a.m. In-person worship service. Service is also on Facebook Live at 10:30 a.m.

Grace Lutheran Church

500 N. Kniss Ave., Luverne
Ph. 507-283-4431; www.gracluverne.org – gracluverne@iw.net
Dave Christenson, Interim Pastor

Thursday, Nov. 10: 8:30 a.m. Missions in Action. Sunday, Nov. 13: 9 a.m. Worship service with baptism. 10 a.m. Coffee. Sunday School. Drums & Jesus. 2:15 p.m. Worship at Poplar Creek. 6:30 p.m. Transitional Task Force meeting. Tuesday, Nov. 15: 8: 9 a.m. Staff meeting. Wednesday, Nov. 16: 7 a.m. Men's Bible Study. 6:15 p.m. 8th Grade confirmation class. 7:30 p.m. 9th Grade confirmation class. Online, TV and Radio Worship options are available. Online worship: Sundays 9 a.m. at www.gracluverne.org, click Worship tab; or Facebook page at Grace Lutheran ELCA, Luverne. TV: Vast Channel 3 Mondays at 4:30 p.m. and Fridays at 10 a.m. Radio: KQAD-AM Radio Sundays at 8:15 a.m.

Bethany Lutheran Church

720 N. Kniss Ave., Luverne
Ph. 507-283-4571 or 605-215-9834
Andrew Palmquist, Pastor

Sundays, 10:15 a.m. Worship service; worship online as well (at els.org). Tuesdays, 6:30 p.m. Zoom Bible study. See our Facebook page, Bethany Lutheran Church (Luverne) for other classes and events.

American Reformed Church

304 N. Fairview Dr., Luverne
Ph. 507-283-8600; [email: office@arcluverne.org](mailto:office@arcluverne.org)

Thursday, Nov. 17: 9 a.m. Cookie Crew. Friday, Nov. 18: 6:30 a.m. Community Men's Bible study. Saturday, Nov. 19: 5:30 p.m. Buntjer Family adoption fundraiser. Sunday, Nov. 20: 9:30 a.m. Worship Service. 10:50 a.m. Sunday School. Tuesday, Nov. 22: 12 p.m. Staff meeting. 7 p.m. Cantata rehearsal. Wednesday, Nov. 23: NO Midweek activities. 7 p.m. Thanksgiving Eve worship service. Services are also broadcast on Vast Channel 3 on Mondays at 6 p.m. and Wednesdays at 4 p.m. DVD's available upon request. To stay up to date on announcements, follow us on Facebook and Instagram @arcluverne.

Rock River Community Church

1075 110th Ave., Luverne
Ph. 507-283-9070; [email: info@rockrivercommunity.church](mailto:info@rockrivercommunity.church)
Bob Junak, Pastor

Come as you are—Sundays @ 10 a.m.: Main Service. Kids church age 3-6th grade—Nursery. Wednesdays @ 6:30 p.m. Midweek Service—Kids age 3-6th grade.

United Methodist Church

109 N. Freeman Ave., Luverne
Ph. 283-4529

Thursday, Nov. 17: 7 p.m. New AA group. Saturday, Nov. 19: 8 p.m. AA meeting. Sunday, Nov. 20: 9:30 a.m. Adult Sunday school; FUEL. 9:45 a.m. coffee hour. 10:30 a.m. Worship Service. 4:30 p.m. Genesis/Revelation Bible Study. Monday, Nov. 21: 6:30 p.m. Genesis/Revelation Bible Study. Tuesday, Nov. 22: 1:30 p.m. Sewn in Faith. Wednesday, Nov. 23: 5:30 p.m. Community Thanksgiving meal. NO FUEL and confirmation. 8 p.m. AA meeting. Thursday, Nov. 24: Office is closed. Live streamed on Facebook and radio.

First Presbyterian Church

302 Central Lane, Luverne
Ph. 283-4787; [email: Firstpc@iw.net](mailto:Firstpc@iw.net)

Sunday, Nov. 20: 9 a.m. Adult Sunday school. 10:15 a.m. Worship service. Youth Sunday school during worship service. In-person Worship service and live on Facebook. Our Facebook page can be found under First Presbyterian Church of Luverne. We are also on the local Luverne cable station at 10 a.m. and 6 p.m. on Tuesdays and 10 a.m. on Thursdays.

St. John Lutheran Church

803 N. Cedar St., Luverne
Ph. 283-2316; [email: stjohn@iw.net](mailto:stjohn@iw.net)
www.stjohnlutheranluverne.org

Thursday, Nov. 17: 10:30 a.m. SD DCE Cluster. Saturday, Nov. 19: 5:30 p.m. Worship Service. Sunday, Nov. 20: 9 a.m. Worship Service. 10:15 a.m. Sunday School. 11:15 a.m. Junior Choir. Monday, Nov. 21: 1 p.m. Quilters meet. 7 p.m. Parish Planning Committee. Wednesday, Nov. 23: 9 a.m. Bible Study. 7 p.m. Thanksgiving Eve Worship. 7:30 p.m. Youth Group. Thursday, Nov. 24: Church office closed. 1:30 p.m. Chapel – Mary Jane Brown. 2:30 p.m. Chapel – Poplar Creek. Services will be available on the Vast Channel 3 Sunday and online at the city website, cityofluverne.org.

Living Rock Church

500 E. Main St., Luverne
Ph. 449-0057; www.livingrockswmn.org
Josh Hayden, Pastor

New Life Celebration Church

101 W. Maple, Luverne
Ph. (605) 368-1924; [email: newlifecelbration@gmail.com](mailto:newlifecelbration@gmail.com)
Food mission every third Thursday.

Zion Evangelical Lutheran Church

305 E. 2nd St., P.O. Box 36, Hardwick
Ph. (507) 669-2855; zionaoffice@alliancecom.net
Jesse Baker, Pastor

Sunday, Nov. 20: 9 a.m. Worship service. 10:15 a.m. Sunday School. 10:30 a.m. Bible study. Worship service on Luverne cable at 3:30 p.m. every Thursday and Friday.

Ben Clare United Methodist Church

26762 Ben Clare Ave., Valley Springs, S.D.
igtwb@WOW.net
Bill Bates, Pastor

First Lutheran Church

300 Maple St., Valley Springs, S.D.
Ph. (605) 757-6662 – firstpalisade@alliancecom.net
Mark Eliason, Pastor

Thursday, Nov. 17: 7 p.m. Parish Council meeting at First Lutheran Church. Sunday, Nov. 20: 9:30 a.m. Sunday School. 10:30 a.m. Worship Service. We Are ONLINE! Facebook: @FirstLutheranValley Springs; YouTube: FirstPalisadeLutheranParish.

Palisade Lutheran Church

211 121st St., Garretson, S.D.
Ph. (507) 597-6257 – palisadchurch@alliancecom.net
www.palisadelutheran.org
Mark Eliason, Pastor

Thursday, Nov. 17: 1:30 p.m. Palisade WELCA meeting. 7 p.m. Parish Council meeting at First Lutheran Church. Sunday, Nov. 20: 9 a.m. Worship Service. 10 a.m. Sunday School. We Are ONLINE! Facebook: @PalisadeLC; YouTube: FirstPalisadeLutheranParish.

First Presbyterian Church

201 S. 3rd St., P.O. Box 73, Beaver Creek
Ph. 507-935-5025
[email: lori.firstpres@gmail.com](mailto:lori.firstpres@gmail.com)

Sundays, 9:30 a.m. Worship Service. Second Tuesday of each month, 7 p.m. Session meeting.

Magnolia United Methodist Church

501 E. Luverne St., Magnolia
Ph. 605-215-3429
[email: magnoliammunc@gmail.com](mailto:magnoliammunc@gmail.com)
Nancy Manning, Pastor

Sunday, 9 a.m., in-person with livestream available on the church's Facebook site.

Steen Reformed Church

112 W. Church Ave., Steen
Ph. 855-2336
Jeremy Wiersema, Pastor

Sunday, 9:30 a.m. and 6 p.m. Worship service in-person with livestream available on Facebook and YouTube. Radio worship on KQAD Sundays at 9:30 a.m.

Bethlehem Lutheran Church

112 N. Main St., Hills
Ph. 962-3270 / bethlehemofhills@gmail.com
Nita Parker, Pastor

Sunday, Nov. 20: 9 a.m. Worship at Tuff Chapel. 9 a.m. Sunday school. 10 a.m. Worship Service. Worship will be streamed live to Facebook at Bethlehem of Hills. You can find more info on our website blchills.org.

Hills United Reformed Church

410 S. Central Ave., Hills
Office Ph. 962-3254
hillsurc@alliancecom.net
Alan Camarigg, Pastor

These weekly church page messages are contributed to God's Work through the Church and by these concerned and responsible citizens & businesses:

Call Rick to place your ad!

283-2333

Read us online!

Rock County
STAR HERALD
www.Star-Herald.com

Trust in Him



Papik
MOTORS
283-9171
PAPIK.COM
Luverne • Rock Rapids • Sibley

SECURITY SAVINGS BANK
bankwithssb.com 507.449.6000
Member FDIC Luverne, MN

HSS HILLS STAINLESS STEEL & EQUIPMENT CO., INC.
506 W. Koehn, P.O. Box 987, Luverne, MN
PHONE 507-283-4405
Church is Important - Please Attend!

HARTQUIST
Funeral and Cremation Services
Pipestone • Luverne • Lake Benton • Jasper • Tyler
www.HartquistFuneral.com

Buffalo Ridge
INSURANCE
507-283-2381 www.buffaloridgeins.com E-mail: info@buffaloridgeins.com

Pizza Ranch
110 E Main, Luverne 507-283-2379

McClure Electric
Alan M. Aanenson, owner
Farm, Home & Commercial Wiring
Luverne, MN Phone 507-283-4716

CWG
Business Insurance.
Tri-State Region *Period!*

TUFF
MEMORIAL HOME
A HOME WITH A HEART!
Hills, MN • 507-962-3275

MANLEY
TIRE & OIL SERVICE
Manley Minnesota
1-800-615-3704
Open six days a week - Closed on Sundays
To God be the Glory.

MINNWEST BANK
116 East Main Street • Luverne • 507-283-2366
Hwy. 75 • 800 South Kniss • Luverne • 507-283-9131
www.minnwestbank.com • Member FDIC • MoneyLine 888-616 BANK

Luverne ANNOUNCER

Advertise Here

First Farmers & Merchants
We believe in you.
Member FDIC. And the community.
303 E. Main, Luverne, MN
507-283-4463 | www.ffmbank.com

Hearing on sale of hemp-derived products set for Nov. 22

NOTICE OF PUBLIC HEARING ON PROPOSED ORDINANCE FOR HEMP DERIVED PRODUCTS

NOTICE IS HEREBY GIVEN, That the Rock County Board of Commissioners will conduct a public hearing on November 22, 2022, at 9:00 A.M. in the Herreid Board meeting room located at 204 E. Brown Street, Luverne, Minnesota, for the purpose of hearing public comment to a proposed Ordinance for the sale of Hemp Derived Products. The full text of the proposed Ordinance is on file at the Rock County Administrator's office or can be viewed at www.co.rock.mn.us. Written comments should be submitted to the Rock County Administrator by 5:00 P.M., November 21, 2022. All persons desiring to be heard shall be given an opportunity to present testimony.

Dated: November 8, 2022

By Order of the Rock County Board of Commissioners Kyle Oldre, Rock County Administrator PO Box 509 Luverne, MN 56156 507-283-5065

(11-17)

Rock County Highway Dept. seeks bids by Dec. 12

NOTICE TO CONTRACTORS

S.A.P. 067-605-015; S.A.P. 067-606-017; S.A.P.067-606-018; S.A.P. 067-607-019; S.A.P. 067-609-020

Sealed proposals will be received by the Rock County Highway Department at Luverne, Minnesota until 11:00 A.M. on Monday December 12th, 2022.

READ CAREFULLY THE PROVISIONS FOR THE WAGE RATES AS CONTAINED IN THE SPECIAL PROVISIONS, AS THEY WILL AFFECT THIS PROJECT.

Attention is called to the fact that the Contractor must comply with the Special Equal Employment Opportunity Provisions as contained in the Proposal. Proposals will be opened and read publicly in the presence of the Rock County Highway Engineer at the Rock County Highway Building located at 1120 North Blue Mound Avenue in Luverne, Minnesota immediately following the hour set for receiving bids for the following Rock County Highway work. Bids will be awarded on Tuesday, December 13, 2022, at the regular Rock County Board of Commissioners Meeting held in the Law Library at the Rock County Courthouse.

The Major Quantities of Work are: 86,957 Sq. Yds. Stabilized Full Depth Reclamation; 232,547 Gallons Bituminous Material for Mixture; 255.5 Tons Cement; 146,787 Sq. Yds. Mill Bituminous Pavement; 33,719 Tons Type SP 12.5 Bituminous Wear Course Mix; 26,599 Tons Aggregate Shouldering Class 1; 10,410 Gallons Bituminous Material for Fog Seal. 67 Ft. of 16'x4' PCST. Box Culvert + 2 End Sections; 65 Ft. of 14'x64 PCST. Box Culvert + 2 End Sections; 130 Ft. of 10'x4' PCST. Box Culvert + 4 End Sections.

Plans, specifications and proposals may be viewed and downloaded on Quest at www.questcdn.com and at the Rock County Highway Department website, www.co.rock.mn.us/highway . Questions may be directed to the office of the Rock County Highway Engineer, 1120 North Blue Mound Avenue, P.O. Box 808, Luverne, MN 56156-0808 / (507) 283 - 5010.

The non-refundable cost for Plans and one proposal will be \$50.00.

Bids must be accompanied by a certified check or corporate surety bond drawn in favor of the Rock County Treasurer in the amount of at least five percent (5%) of the proposal. Sealed bids shall be clearly marked "PROJECT NO. SAP 067-605-015; Etc.

The Board of Rock County Commissioners reserves the right to reject any or all bids and to waive any defects therein.

Rock County is an Equal Opportunity/Affirmative Action Employer.

Mark R. Sehr, P.E. Rock County Highway Engineer (11-17, 11-23, 12-01)

Rock County Commissioners meet Sept. 20

Herreid Board Room 9:00 A.M. Rock County Courthouse Sept. 20, 2022

The meeting was called to order by the Chair with Commissioners Overgaard, Thompson, Burger and Williamson present. Also in attendance were Administrator Kyle Oldre, County Attorney Jeff Haubrich, Deputy Administrator Susan Skattum and Star-Herald Reporter Mavis Fodness.

The Pledge of Allegiance was recited by those in attendance.

Motion by Williamson, seconded by Overgaard, to approve the September 20, 2022, County Board agenda, declared carried on a voice vote.

Motion by Overgaard, seconded by Burger, to approve the September 06, 2022, County Board minutes, declared carried on a voice vote.

Motion by Burger, seconded by Thompson, to approve the consent agenda, declared carried on a voice vote.

1. FY23 SSTS Grant Agreement

2. Y23 Health Insurance Renewal w/SWWC; reflects a 9.5% increase

Motion by Overgaard, seconded by Reisch, to go into closed session at 9:03 a.m. for the purpose of discussing union negotiation strategies, declared carried on a voice vote.

Motion by Williamson, seconded by Thompson, to arise from closed session at 9:40 a.m., declared carried on a voice vote.

Ashley Kurtz, Auditor/Treasurer, presented the claims; motion by Overgaard, seconded by Thompson, to approve the claims as presented, declared carried on a voice vote. A complete listing the claims is available at the Auditor/Treasurer's office. SEPTEMBER 20, 2022 CLAIMS OVER \$2,000

Table with 2 columns: Vendor Name, Amount. Includes BREMIK MATERIALS, INC (\$2,013.54), CHS INC (27,878.36), COUNTIES PROVIDING TECHNOLOGY (6,755.00), etc.

TOTAL \$157,225.42

The County Board was in receipt of the Fund Balance report; motion by Burger, seconded by Overgaard, to approve, declared carried on a voice vote.

Kurtz informed the County Board that Resolution No. 22-22, authorizing conveyance of tax forfeited land to governmental subdivision (City of Hills) for conditional use was rejected by the Department of Revenue as the intended use (daycare facility) was not considered a public use. Kurtz presented a new resolution, #30-22, authorizing the conveyance of tax-forfeited parcels to the City of Hills for the purchase price of \$1.00 as per their request to correct a blighted area. Motion by Williamson, seconded by Thompson, to approve Resolution No. 30-22, declared carried on a voice vote.

The Administrator and Auditor/Treasurer led a discussion regarding the 2023 Budget and setting the Preliminary Levy. After considerable discussion, motion by Thompson, seconded by Reisch, to set the Preliminary Levy at \$6,827,411.00, a 4.5% increase, declared carried on a voice vote.

Mark Sehr, Engineer, presented an amendment to the Road Use & Repair Agreement with Walleye Wind, stating that wind turbine component delivery route adjustments have been made due to MnDOT restrictions on the proposed haul routes due to the ongoing I-90 construction project. On a recommendation from the Engineer, motion by Williamson, seconded by Overgaard, to approve the amendment, declared carried on a voice vote.

The County Board was in receipt of a proposed ordinance for the sale of Hemp Derived Eligible Cannabis products; the Administrator stated that prior to adopting the proposed ordinance, a Public Hearing must be scheduled to allow for public comment. Motion by Thompson, seconded by Reisch, to schedule a Public Hearing on October 18, 2022, at 9:05 a.m. in the Herreid Board meeting room to allow public comment on the proposed Sale of Hemp Derived Eligible Cannabis Products Ordinance, declared carried on a voice vote.

The Administrator presented an update of the Opioid settlement, stating Rock County is scheduled to received \$14,655.26/yr for the next nine years. Oldre stated that Rock County has been in receipt of several inquiries from organizations about expenditure eligibility, proper spending of opioid funds are as follows:

- 1. Spend the money to save lives
2. Use evidence to guide spending
3. Invest in youth prevention
4. Focus on racial equity
5. Develop a fair and transparent process for deciding where to spend the funds
6. All expenditures must be approved by board resolution.

The Administrator stated that New Vision Coop has submitted a tax abatement request for new construction at their existing facility at 1856 County Highway 4, Magnolia, MN. The new construction includes the addition of a \$1.5 million warehouse and will increase their employee base by (2) new employees. Motion by Overgaard, seconded by Thompson, to set a Public Hearing date of November 8, 2022, at 9:00 a.m. in the Herreid Board meeting room of the Rock County Courthouse, declared carried on a voice vote.

Auditor/Treasurer Ashely Kurtz also stated that she is in receipt of a Rock Home Initiative application from Alex and Sharon Nykamp for new construction located at 329 Rock River Drive, Edgerton, MN, located in Battle Plain township. Motion by Overgaard, seconded by Thompson, to schedule a Public Hearing for November 8, 2022, at 9:00 a.m. in the Herreid Board meeting room of the Rock County Courthouse, declared carried on a voice vote.

The Administrator reminded the County Board of the Rock Strong event sponsored by the Rock County EDA and Sioux Valley Electric scheduled for September 22nd; currently 30-40 invitees have confirmed their attendance.

The County Board was in receipt of correspondence from Representative Joe Schomacker requesting data from the Department of Public Safety Driver Vehicle Services regarding the schedule changes to drivers testing centers in Pipestone, Rock and Murray. The data request references details as to why the Pipestone, Rock and Murray DPS testing center's office hours are being downsized to (1) day per month, what recruitment efforts both locally and at the state DPS offices are being done to recruit additional employees.

The Administrator's update included activities regarding the installation of security cameras at the Courthouse, budget details and economic development. Commissioner Williamson stated that he attended the following meetings: ACE Volunteer Appreciation, Rural Water, Soil & Water Conservation District and Ordinance development.

Commissioner Thompson stated that she attended the following meetings: ACE Volunteer Appreciation, Ordinance development and Regional Development Commission. Commissioner Overgaard stated that he attended the following meetings: Economic Development Authority and ACE Volunteer Appreciation.

Commissioner Burger stated that he attended the following meetings: ACE Volunteer Appreciation, Southwest Mental Health, Community Corrections, AMC Legislative Policy Conference and Personnel Committee of the County Board.

Commissioner Reisch stated that he attended the following meetings: Economic Development Authority, Personnel Committee of the County Board, Southwestern MN Opportunity Council.

With no further business to come before the County Board, the meeting was declared adjourned by order of the chair.

(11-17)

Rock County Commissioners meet Oct. 4

Herreid Board Room 9:00 A.M. Rock County Courthouse Oct. 4, 2022

The meeting was called to order by the Chair with Commissioners Overgaard, Thompson, Burger and Williamson present. Also in attendance were Administrator Kyle Oldre, County Attorney Jeff Haubrich and Star-Herald Reporter Mavis Fodness.

The Pledge of Allegiance was recited by those in attendance.

Motion by Overgaard, seconded by Thompson, to approve the October 04, 2022, County Board agenda, declared carried on a voice vote.

Motion by Overgaard, seconded by Williamson, to approve the September 20, 2022, County Board minutes, declared carried on a voice vote.

Motion by Williamson, seconded by Burger, to approve the Consent Agenda, declared carried on a voice vote.

1. At-Scene/Crime Fighters software renewal - \$3,950.00

2. Resolution No. 31-22, Lincoln-Pipestone Rural Water Board appointments - Earl DeWilde, Randy Kraus and Peter Petersen

Calla Jarvie, Rock County Community Library Director, presented an update from the Rural Library Conference that was held in Chattanooga, TN. Conference highlights were non-traditional programming, book clubs, re-entering success (prisoners), responding to crisis and that libraries have become anchor institutions in offering these non-traditional programming for users. Overall benefits of the conference were networking with other attendees.

Rachel Jacobs, Land Records Office Director, gave a presentation regarding how property/market values are determined. The Land Records Office tracks all land sales verifying if it was a good sale as many factors established by statute determine the status of the sale. The sales median must be between 90% - 105%, again established by statute; sales determine market values. The County Board thanked Jacobs for the informative presentation.

Ashley Kurtz, Auditor/Treasurer, presented the claims and per diems of \$2,500; motion by Reisch, seconded by Overgaard, to approve the claims and per diems, declared carried on a voice vote. A complete listing the claims is available at the Auditor/Treasurer's office. OCTOBER 4, 2022 CLAIMS OVER \$2,000

Table with 2 columns: Vendor Name, Amount. Includes AMERICAN ENGINEERING TESTING, INC (\$8,700.00), BREMIK MATERIALS, INC (3,807.25), CCP INDUSTRIES INC (2,069.39), COMMISSIONER OF TRANSPORTATION DILIGENT CORPORATION (9,719.21), etc.

TOTAL \$240,862.66

The County Board was in receipt of the Fund Balance report from the Auditor/Treasurer; motion by Overgaard, seconded by Thompson, to approve, declared carried on a voice vote.

The Auditor/Treasurer requested approval of Resolution No. 32-22, establishing a County Absentee Ballot Board for the 2022 General Election; motion by Burger, seconded by Overgaard, to approve Resolution No. 32-22, declared carried on a voice vote. The County Board also indicated that any comments regarding the integrity of the elections process in Rock County are encouraged to make an appointment with the County Board to discuss the issue.

Mark Sehr, Engineer, requested authorization to purchase a John Deere 6040DW 624 P Wheel loader from the Minnesota State Bid Program. The front end loader would replace unit #278 (1998 John Deere 544H wheel loader). The equipment replacement was identified on the Rock County CIP for 2023 and will use wind tower production tax funds to pay for the expenditure. The state bid proposal is as follows:

Table with 2 columns: Item, Amount. Includes John Deere 6040DW 624 P Wheel Loader (\$239,468.09), Less 1998 John Deere 544H (-45,000.00), Total (\$194,468.09)

Motion by Williamson, seconded by Overgaard, to authorize the purchase,

declared carried on a voice vote.

The County Board recognized Doug Bos for his recent award - Source Water Protection Award, from the Minnesota Department of Health and the Minnesota Rural Water Association for his leadership efforts in protecting community drinking water sources. Bos stated that Rock County has made progress in improving the nitrate levels in the Rock River and he credits that back to land owners and producers for their willingness to implement best management practices and state and federal programs for developing easement programs to protect drinking water resources.

The County Board was informed of an employee resignation from Deputy Michael Westerbur; the County Board accepted the resignation with regret. The Administrator stated that the Sheriff is working on filling the vacant position.

The County Board was in receipt of a Conditional Use Permit (CUP) for a feedlot expansion in Section 11 of Springwater Township for Christensen Farms. This is an NPDES permitted feedlot site and is the permitting authority for this site and will manage all the feedlot permitting as such. A public hearing was held on September 26th at 7:00 and resulted with no comments or questions; the Planning Commission recommends approval. Motion by Overgaard, seconded by Reisch, to approve, declared carried on a voice vote.

The Administrator informed the County Board that the American Rescue Plan has appropriated \$2 billion to the Treasury for fiscal years 2022 and 2023 and launched a Local Assistance and Tribal Consistency Fund and will provide payments to eligible revenue sharing counties and eligible Tribal governments to use for any governmental purpose except for a lobbying activity. Rock County is eligible for \$100,000 for FY2022 - 2023. Motion by Thompson, seconded by Burger, to authorize the Auditor/Treasurer to submit formal request for the Local Assistance and Tribal Consistency funding, declared carried on a voice vote.

The Administrator provided a follow up discussion regarding the Rock Strong Event, stating the participants learned of the many resources to assist with economic development within their municipality; also thanked Sioux Valley Energy for hosting the event.

The Administrator stated that he had a follow up with a deputy who originally intended to retire at the year and rescinded his resignation letter until the deputy vacancies have been filled. Also stated he attended an Emergency Management Table Top exercise and other economic development meetings.

Commissioner Williamson stated that he attended the following meetings: Walleye Wind, Rock Strong Event and Southwest Health and Human Services meeting to discuss mental health services.

Commissioner Thompson stated that she attended the following meetings: Southwest Health and Human Services, Southwest Health and Human Services/Mental Health, Plum Creek Library, Rock Strong Event.

Commissioner Overgaard stated that he attended the following meetings: Walleye Wind, Rock Strong Event, Solid Waste, Southwest Energy Board and Planning and Zoning.

Commissioner Burger stated that he attended the following meetings: Walleye Wind, Southwest Health & Human Services/Mental Health, Union negotiation and Southwest Health & Human Services.

Commissioner Reisch stated that he attended the following meetings: Union negotiation, City/County Liaison and Rock Strong Event.

With no further business to come before the County Board, the meeting was declared adjourned by order of the chair.

(11-17)

Rock County Commissioners meet Oct. 18

Herreid Board Room 9:00 A.M. Rock County Courthouse Oct. 18, 2022

The meeting was called to order by the Chair with Commissioners Overgaard, Thompson, Burger and Williamson present. Also in attendance were Administrator Kyle Oldre, Deputy Administrator Susan Skattum, County Attorney Jeff Haubrich and Star-Herald Reporter Mavis Fodness.

The Pledge of Allegiance was recited by those in attendance.

Motion by Burger, seconded by Overgaard, to approve the October 18, 2022, County Board Agenda, declared carried on a voice vote.

Motion by Williamson, seconded by Overgaard, to approve the October 04, 2022, County Board minutes, declared carried on a voice vote.

Motion by Williamson, seconded by Thompson, to call a Public Hearing to order at 9:03 A.M., declared carried on a voice vote.

Terry Gray, Herb N'Legend Business Owner, made the following comments regarding the proposed ordinance: Minnesota law is more restrictive than the Federal law, thus why the need for an ordinance; amend the Tobacco Ordinance to incorporate language regulating the sale of hemp products, requested the language in Section 7 be modified to reflect "a licensed product". Tim Jungers, attendee also supported Gray's comments.

Christina Perez, attendee also supported Gray's comments.

Ann Orren, Community Public Health Supervisor, stated that legislation and regulations regarding Hemp are likely to change frequently, thus would be the reasoning for a separate ordinance.

Motion by Burger, seconded by Overgaard, to close the Public Hearing at 9:38 A.M., declared carried on a voice vote.

The County Board was in receipt of a resolution adopting an ordinance regulating the sale of Hemp Derived Products. After considerable discussion, motion by Overgaard to table action of the adoption of the ordinance; motion was seconded by Burger and declared carried on a 4-1 vote with Commissioner Reisch voting nay.

Ann Orren, Community Public Health Supervisor, presented information regarding the Minnesota Opioid Settlement. Rock County's expected portion of the settlement is \$453,668.98 paid directly to the county over the course of 18 years and Johnson & Johnson payments over 9 years. Public Health departments shall serve as the lead agency and Chief Strategist to identify, collaborate, and respond to local issues. Motion by Burger, seconded by Thompson, to designate SWHHS/Public Health to manage the compliance of the settlement funds, declared carried on a voice vote.

Eric Sage, Rock County Opportunities Director, introduced himself to the County Board and stated he looks forward to his new role as the Director as Rock County Opportunities.

Mark Sehr, Engineer, requested approval of the final payment of \$168,657.39 to Central Specialties, Inc. for the 2021 Bituminous Overlay projects; motion by Burger, seconded by Overgaard, to approve, declared carried on a voice vote.

The Engineer also requested approval of the final payment of \$19,204.52 to Henning Construction Company for the 2021 Box Culvert projects; motion by Overgaard, seconded by Thompson, to approve, declared carried on a voice vote.

Commissioner Overgaard extended a thank you to Sehr on behalf of Walleye Wind for his efforts with the project; the County Board thanked Sehr as well.

Ashley Kurtz, Auditor/Treasurer, presented claims which reflected a claim payable to Midway Ford Co. for a 2022 Ford 250 pickup that was purchased from the state bid; the Administrator requested that the pickup be purchased for Building & Maintenance and recommended payment from reserves. Motion by Williamson, seconded by Overgaard, to authorize the purchase of \$39,700 for Building Maintenance and to pay the expenditure from Reserves, declared carried on a voice vote.

Motion by Overgaard, seconded by Thompson, to pay the claims, declared carried on a unanimous vote. A complete listing the claims is available at the Auditor/Treasurer's office.

Table with 2 columns: Vendor Name, Amount. Includes OCTOBER 18, 2022 CLAIMS OVER \$2,000, A & B BUSINESS INC (\$5,251.74), CHS INC (52,124.74), COUNTIES PROVIDING TECHNOLOGY (6,755.00), etc.

continued on next page...

Star Herald PUBLIC NOTICES

Page 12A November 17, 2022

...continued from previous page

The County Board was in receipt of the Fund Balance report which reflected receipt of October tax collection and PILT payment; motion by Burger, seconded by Overgaard, to approve the Fund Balance report, declared carried on a voice vote.

The Auditor/Treasurer was informed that the County Board took action to designate the Public Health to handle disbursement of funds and compliance of the Opioid Settlement funds.

Pam Dooyema, Rock County Resident, voiced concerns over the mail ballot process. The Auditor/Treasurer addressed the following issues: •voter rolls come from the State and a voter remains on the voter roll for (4) years until a qualified credential is presented to remove them from the roll; •if a voter votes more than once using a mail ballot, the voter along with a witness is committing voter fraud, a felony; •the mail ballot process is adopted by each precinct which is required to abide by polling place regulations

The Auditor/Treasurer also stated that the Courthouse serves as a polling place and mail ballot recipients have the option of bringing their mail ballot to the Courthouse polling place to vote.

Shane Halbur, new Manager of Walleye Wind introduced himself to the County Board and stated that the project is expected to be completed by year end. The Walleye Wind facility will employ the Plant Manager and (3) Service Technicians; the facility will be located at 1064 40th Ave, Luverne, MN. Ryan Holtz, Rural Water Plan Manager, discussed the results of the October 6, 2022, bid letting conducted by Banner & Associates to dig a new well; (2) bids were received:

Thein Well/Spicer, MN - \$332,386.00
Sargent Drilling/Geneva, NE - \$747,969.00

There was a brief discussion regarding the bid differentials; the Rural Water Board took action on 10/10/2022 to accept the bid from Thein Well/Spicer, MN for \$332,386.00. Motion by Williamson, seconded by Overgaard, to approve the bid from Thein Well/Spicer, MN, declared carried on a voice vote.

Holtz stated that the project has received \$25,000 in grants from Minnesota Department of Health along with \$100,000 in county funds formerly known as ARPA; Holtz requested to utilize \$2.09 million of Rural Water Assessment Funds to pay the remainder of the expenditure. Motion by Williamson, seconded by Reisch, to approve the utilization of the assessment funds, declared carried on a voice vote.

The County Board was in receipt of correspondence from the City of Luverne informing them that the estimated renovation cost for the proposed day care facility is \$6.2 million and requesting the county for \$1 million to assist with the renovation expenditure. No action was taken at this time.

The County Board briefly discussed the AMC Fall District VIII meeting scheduled for October 27, 2022, in Wabasso, MN; the Administrator encouraged those attending to review the list of proposed legislative issues and vote on the top three priorities.

Motion by Burger, seconded by Overgaard, to accept the 2023 insurance renewals for MN Life Group & Voluntary Life, Delta Dental, Vision Care and the addition of new voluntary benefit Long Term Disability, declared carried on a voice vote.

Motion by Overgaard, seconded by Williamson, to approve the Johnson Controls Building Maintenance renewal, declared carried on a voice vote. The renewal has no rate increase.

The Administrator briefly discussed who was designated as the AMC voting delegates and it was deemed to make no changes.

Motion by Overgaard, seconded by Reisch, to transfer \$25,000 of ARPA funds to the Rock County Economic Development Authority for to be used for marketing strategies, declared carried on a voice vote.

The Administrator report that he and Deputy Administrator attended the MACA/MCHMA Fall Conference where Recruitment and Retention strategies were discussed and was a presenter regarding the proposed Hemp Ordinance; also has had discussions with contractor regarding repair issues on the Tunnel and that Johnson Controls are currently reviewing the bids the HVAC projects at the Human Services and Library buildings. Commissioner Williamson stated that he attended the following meetings: Southwestern Mental Health and (2) Rural Water meetings.

Commissioner Thompson stated that she attended the following meetings: Meet/greet of the Luverne City Administrator candidates and requested accident data at the intersection of CSAH 4 and CSAH 6; also requested follow up from the Auditor/Treasurer regarding Dooyema's concerns of why ballots are mailed to registered voters no longer residing at their address.

Commissioner Overgaard stated that he attended the following meetings: Next ERA via Zoom meeting where lack of transmission lines in Dodge County was discussed. Commissioner Burger stated that he attended the following meetings: Meet/greet of the Luverne City Administrator candidates, Daycare meeting, Southwestern Mental Health, Southwestern Mental Health Adult Consortium Annual meeting and Sharing Hands-Nurse Family Partnership.

Commissioner Reisch stated that he attended the following meetings: Union negotiation and Southwest Minnesota Opportunity Council.

With no further business to come before the County Board, the meeting was declared adjourned by order of the chair.

(11-17)

Mortgage foreclosure sale set for Sept. 29

NOTICE OF MORTGAGE FORECLOSURE SALE

THE RIGHT TO VERIFICATION OF THE DEBT AND IDENTITY OF THE ORIGINAL CREDITOR WITHIN THE TIME PROVIDED BY LAW IS NOT AFFECTED BY THIS ACTION.

NOTICE IS HEREBY GIVEN that default has occurred in the conditions of the following described mortgage:

DATE OF MORTGAGE: April 21, 2010

MORTGAGOR: Bradley G Moss and Dawn M Moss, husband and wife as joint tenants.

MORTGAGEE: Heritage Bank N.A.

DATE AND PLACE OF RECORDING: Recorded April 26, 2010, Rock County Recorder, Document No. 173571.

ASSIGNMENTS OF MORTGAGE: Assigned to: Central Mortgage Company. Dated April 21, 2010, Recorded April 26, 2010, as Document No. 173572. And thereafter assigned to: Mortgage Electronic Registration Systems, Inc. Dated October 19, 2015, Recorded October 26, 2015, as Document No. 187187. And thereafter assigned to: Bayview Loan Servicing, LLC. Dated August 29, 2019, Recorded August 30, 2019, as Document No. 195483. And thereafter assigned to: Nationstar Mortgage LLC. Dated June 30, 2022, Recorded June 30, 2022, as Document No. 202762.

TRANSACTION AGENT: NONE

TRANSACTION AGENT'S MORTGAGE IDENTIFICATION NUMBER ON MORTGAGE: NONE

LENDER OR BROKER AND MORTGAGE ORIGINATOR STATED ON MORTGAGE: Heritage Bank N.A.

RESIDENTIAL MORTGAGE SERVICER: Nationstar Mortgage LLC d/b/a RightPath Servicing

MORTGAGED PROPERTY ADDRESS: 744 171st Street, Luverne, MN 56156
TAX PARCEL I.D. #: 110034000

LEGAL DESCRIPTION OF PROPERTY:

A tract of land in the NW 1/4 of Section 14, Township 103 North, Range 46 West of the 5th P.M. Rock County, Minnesota, described as follows:

Commencing at the Northwest Corner of the NW 1/4, then east along the North Line of said Section a distance of 2,345 feet to the point of beginning; thence continuing east along the North Line of said NW 1/4 a distance of 295 feet; thence south and parallel to the West Line of said Section a distance of 375 feet; thence west and parallel to the North Line of said Section a distance of 295 feet; thence north and parallel to the West Line of said Section a distance of 375 feet to the point of beginning.

COUNTY IN WHICH PROPERTY IS LOCATED: Rock

ORIGINAL PRINCIPAL AMOUNT OF MORTGAGE: \$180,000.00

AMOUNT DUE AND CLAIMED TO BE DUE AS OF DATE OF NOTICE, INCLUDING TAXES, IF ANY, PAID BY MORTGAGEE: \$204,309.90

That prior to the commencement of this mortgage foreclosure proceeding Mortgagee/Assignee of Mortgagee complied with all notice requirements as required by statute; That no action or proceeding has been instituted at law or otherwise to recover the debt secured by said mortgage, or any part thereof;

PURSUANT to the power of sale contained in said mortgage, the above described property will be sold by the Sheriff of said county as follows:

DATE AND TIME OF SALE: September 29, 2022, at 10:00 A.M.

PLACE OF SALE: Sheriff's Office, Main Entrance, Law Enforcement Center, 1000 North Blue Mound Avenue, Luverne, MN

to pay the debt then secured by said Mortgage, and taxes, if any, on said premises, and the costs and disbursements, including attorneys' fees allowed by law subject to redemption within six (6) months from the date of said sale by the mortgagor(s), their personal representatives or assigns unless reduced to Five (5) weeks under MN Stat. §580.07.

TIME AND DATE TO VACATE PROPERTY: If the real estate is an owner-occupied, single-family dwelling, unless otherwise provided by law, the date on or before which the mortgagor(s) must vacate the property if the mortgage is not reinstated under section 580.30 or the property is not redeemed under section 580.23 is 11:59 p.m. on March 29, 2023, unless that date falls on a weekend or legal holiday, in which case it is the next weekday, and unless the redemption period is reduced to 5 weeks under MN Stat. Secs. 580.07 or 582.032.

MORTGAGOR(S) RELEASED FROM FINANCIAL OBLIGATION ON MORTGAGE: None

"THE TIME ALLOWED BY LAW FOR REDEMPTION BY THE MORTGAGOR, THE MORTGAGOR'S PERSONAL REPRESENTATIVES OR ASSIGNS, MAY BE REDUCED TO FIVE WEEKS IF A JUDICIAL ORDER IS ENTERED UNDER MINNESOTA STATUTES, SECTION 582.032, DETERMINING, AMONG OTHER THINGS, THAT THE MORTGAGED PREMISES ARE IMPROVED WITH A RESIDENTIAL DWELLING OF LESS THAN FIVE UNITS, ARE NOT PROPERTY USED IN AGRICULTURAL PRODUCTION, AND ARE ABANDONED."

Dated: July 26, 2022

Nationstar Mortgage LLC
Mortgagee/Assignee of Mortgagee

LIEBO, WEINGARDEN, DOBIE & BARBEE, P.L.L.P.
Attorneys for Mortgagee/Assignee of Mortgagee

4500 Park Glen Road #300
Minneapolis, MN 55416
(952) 925-6888
21 - 22-002677 FC

IN THE EVENT REQUIRED BY FEDERAL LAW: THIS IS A COMMUNICATION FROM A DEBT COLLECTOR.

(08-04, 08-11, 08-18, 08-25, 09-01, 09-08)

Notice of postponement

NOTICE OF POSTPONEMENT OF MORTGAGE FORECLOSURE SALE

Pursuant to the provisions of Minnesota Statutes 580.07, the foregoing foreclosure sale is postponed until November 10, 2022 at 10:00 AM at the Sheriff's Office, Main Entrance, Law Enforcement Center, 1000 North Blue Mound Avenue, Luverne, MN, in said county and state.

Dated: September 27, 2022

Nationstar Mortgage LLC
Mortgagee/Assignee of Mortgagee

LIEBO, WEINGARDEN, DOBIE & BARBEE, P.L.L.P.
Attorneys for Mortgagee/Assignee of Mortgagee

4500 Park Glen Road #300
Minneapolis, MN 55416
(952) 925-6888
21 - 22-002677 FC

IN THE EVENT REQUIRED BY FEDERAL LAW: THIS IS A COMMUNICATION FROM A DEBT COLLECTOR.

(10-06)

Notice of postponement

NOTICE OF POSTPONEMENT OF MORTGAGE FORECLOSURE SALE

Pursuant to the provisions of Minnesota Statutes 580.07, the foregoing foreclosure sale is postponed until December 22, 2022 at 10:00 AM at the Sheriff's Office, Main Entrance, Law Enforcement Center, 1000 North Blue Mound Avenue, Luverne, MN, in said county and state.

Dated: November 8, 2022.

Nationstar Mortgage LLC
Mortgagee/Assignee of Mortgagee

LIEBO, WEINGARDEN, DOBIE & BARBEE, P.L.L.P.
Attorneys for Mortgagee/Assignee of Mortgagee

4500 Park Glen Road #300
Minneapolis, MN 55416
(952) 925-6888
21 - 22-002677 FC

IN THE EVENT REQUIRED BY FEDERAL LAW: THIS IS A COMMUNICATION FROM A DEBT COLLECTOR.

(11-17)

Steinhoff Petition for determination of descent

STATE OF MINNESOTA IN DISTRICT COURT

COUNTY OF ROCK FIFTH JUDICIAL DISTRICT

In re Estate of: Case Type: Decree of Descent
Court File: 67-PR-22-276
Judicial Officer: Terry S. Vajrjt

DANIEL HENRY STEINHOFF, Decedent NOTICE OF AND ORDER FOR HEARING ON PETITION FOR DETERMINATION OF DESCENT

Debra A. Steinhoff has filed a Petition for Determination of Descent. It is Ordered that on December 12, 2022, at 8:30 a.m., a hearing will be held in this Court at Luverne, Rock County, Minnesota, on the petition.

The petition represents that the decedent died more than three (3) years ago leaving property in Minnesota. The petition requests the Court probate the decedent's Will and determine the descent of such property and assign the property to the persons entitled.

Any objections to the petition must be raised at the hearing or filed with the Court prior to the hearing. If the petition is proper and no objections are filed or raised, the petition will be granted.

Notice shall be given by publishing this Notice and Order as provided by law and by Mailing a copy of this Notice and Order to each interested person by United States mail at least 14 days before the time set for the hearing.

Dated: Nov. 9, 2022 BY THE COURT
/s/ Terry S. Vajrjt
Judge of District Court

Dated: Nov. 9, 2022 /s/ Natalie Reisch
Court Administrator

Daniel A. Birkholz #8370
Birkholz & Associates, LLC
209 Armstrong Blvd. South
PO Box 461
St. James, MN 56081
507-375-3374

State of Minnesota District Court
Rock County Fifth Judicial District
Court File Number: 67-PR-22-276
Case Type: Decree of Descent

Notice of Remote Zoom Hearing

In re the Estate of DANIEL HENRY STEINHOFF, Deceased
You are notified this matter is set for a remote hearing. This hearing will not be person at the courthouse.

Hearing Information
December 12, 2022
Probate Hearing
8:30 A.M.

The hearing will be held via Zoom and appearance shall be by video and audio unless otherwise directed with Judicial Officer Terry S. Vajrjt, Rock County District Court. The Minnesota Judicial Branch uses strict security controls for all remote technology when conducting remote hearings.

You must:
• Notify the court if your address, email, or phone number changes.
• Be fully prepared for the remote hearing. If you have exhibits you want the court to see, you must give them to the court before the hearing. Visit https://www.mncourts.gov/Remote-Hearings.aspx for more information and options for joining remote hearings, including how to submit exhibits.
• Contact the court at 507-935-7006 if you do not have access to the internet, or are unable to connect by video and audio.

To join by internet:
1. Type https://zoomgov.com/join in your browser's address bar.
2. Enter the Meeting ID and Meeting Passcode (if asked):
Meeting ID: 161 190 6203
Password: 218937
3. Update your name by clicking on your profile picture. If you are representing a party, add your role to your name, for example, John Smith, Attorney for Defendant.
4. Click the Join Audio icon in the lower left-hand corner of your screen.
5. Click Share Video.

To join by telephone (if you are unable to join by internet):
Be sure you know how to mute your phone when you are not speaking and unmute it again to speak.

1. Call Toll-Free: 1-833-568-8864
2. Enter the Meeting ID and Meeting Passcode:
Meeting ID: 161 190 6203
Password: 218937

Para obtener más información y conocer las opciones para participar en audiencias remotas, incluido cómo enviar pruebas, visite www.mncourts.gov/Remote-Hearings. Boqueo www.mncourts.gov/Remote-Hearings oo ka eego faahfaahin iyo siyaabaha aad uga qeybgeli karto dawad-dhageysi ah fogaan-arag, iyo sida aad u soo gudbineyso wixii caddeymo ah.

Dated: November 9, 2022

Natalie Reisch
Rock County Court Administrator
204 E. Brown St, P.O. Box 745
Luverne MN 56156
507-935-7006

(11-17, 11-23)

Advertise Today!
Call Rick or Wyatt 283-2333

LOCAL.
DIGITAL.
ADVERTISING.

170,000 monthly impressions!

Advertise YOUR business on 55" digital screens in 12 locations!

For more information contact:

Rick Peterson
507-290-0924
bluemounddigital@gmail.com

Wyatt VanSteenberg
507-220-1994
wyatt.bluemounddigital@gmail.com



Rock County STAR HERALD Luverne ANNOUNCER

CARDS OF THANKS

The Marie Klarenbeek family thank you for all your thoughts, prayers, cards, messages, visits, food and gifts since Mom's passing. Your thoughtfulness and kindness will not be forgotten. Especially thanks to the staff at The Oaks, Poplar Creek and Mary Jane Brown throughout the year. Your gifts of loving, gentle care with respect was felt by our whole family. Thanks to Matt and the entire staff of Hartquist. Your professional, yet personal guidance was outstanding and helped us through this journey.

God's blessings to all!
Gloria & Lyle & family
Colleen & Jim & family
(11.17-11.19))

MISCELLANEOUS

HAVE A UNIQUE SERVICE OR BUSINESS? Get the word out to over 1.4 million households. Call WIDE AREA CLASSIFIEDS today, 507-359-7326. (tc)

EMPLOYMENT

Help Wanted: Son-D Farms in Adrian is seeking a pick-up driver. Full or part-time. Call Doug for information, 507-370-1590. (11.5-12.15)

Ellsworth Public School is seeking a Paraprofessional and an Assistant Cook. Applications can be found online at <https://www.ellsworth.mntm.org/staff/employment-opportunities.cfm> or by calling the school office at 507-967-2242. (11.5-11.24)

Interested in Advertising?
Call Rick or Wyatt
283-2333

EMPLOYMENT

TITAN MACHINERY

Titan Machinery needs to add an experienced Service Expert to our team in Luverne, MN!

As a Service Advisor, you will be a valued member of Team Titan by:

- **Taking Care of Our Customers:** Professionally handle customer inquiries and communications such as repair estimates, proper maintenance schedules and warranty inspections
 - **Being an Expert:** Understand financial drivers of the service department and assist the Service Manager/Team with various technical systems, tracking logs and adherence to company policy and procedures
 - **Showing Commitment to Excellence:** Complete all administrative work associated with the service department including work order and warranty claim administration. Support the Service Manager in scheduling adequate work flow for the department
 - **Being Safe:** Show a focus on always keeping yourself and your team members safe
- This position is a great fit for your career if you:**
- Have 1+ years of related work experience
 - Can use a computer as needed to complete your work
 - Have great attention to detail, and enjoy working with numbers and reports
 - Enjoy 'tying up loose ends' and connecting with multiple people to complete projects
 - Can stay up-to-date on product training
- Benefits include, but are not limited to:**
- Performance-based incentives
 - HSA (Health Savings Account)—\$1500 tax-free each year, paid to your account by Titan Machinery
 - 401(k) with company matching on your first day of full-time employment

Apply online at www.titan-machinery.com/careers or direct inquiries to: **Titan Machinery, HR**
644 East Beaton Drive
West Fargo, ND 58078-2648
701-356-0130
EEO/AA: Women, minorities and the disabled are encouraged to apply.



EMPLOYMENT

HELP WANTED

FULL-TIME TELLER/BOOKKEEPER

This position requires assisting customers with basic financial needs.

Duties include: Cash checks/take deposits, Process loan payments, Issue money orders, Open/close accounts
Incentives: Competitive wages, 401k matching, Health insurance, Disability insurance, Life insurance, Paid vacation

Please send resume to, or pick up job application at:

Adrian State Bank
322 Maine Ave
Adrian, MN 56110-0129

For more information, contact Matt at 507-483-2447.

EMPLOYMENT

HSI Habilitative Services, Inc.

We are hiring for Part-time and Full-time Caregiver positions in Luverne, MN. We have flexible schedules and currently looking to fill awake overnight and afternoon/evening positions. Our employees work with individuals with disabilities and mental health in group home settings. No experience or CNA required for Caregiver roles as we provide on the job training. Apply online today if you meet these basic requirements: 18 years of age or older, clear criminal background check, and valid DL with clean driving record (except for overnights). We pay \$15 and up depending on the location and FT benefits start at 30 hrs/wk. Now offering On-Demand Pay, access to your money anytime, no need to wait until pay day!

Apply online: SevitaCareers.com (search by Luverne)
Questions contact Krissi @ 978-209-1069

MN VETERANS HOME LUVERNE

NOW HIRING

Administrative Assistant

(Office & Administrative Specialist Intermediate)
This full-time position provides administrative and reception services to various departments within the facility.

- Why Work for the Luverne Veterans Home
- Competitive pay
 - Low-cost, comprehensive medical and dental insurance
 - Paid holidays and generous vacation, sick leave and paid parental leave
 - State of Minnesota retirement plan
 - High-quality CMS ratings
 - Strong staffing ratios

Apply online:

<https://mn.gov/mmb/careers>

For additional information call

507-920-0000
AA/EOE



EMPLOYMENT

EMPLOYMENT

Luverne Public Schools is accepting applications for a

FULL/PART-TIME CUSTODIAN

Shift differential paid after 6 p.m.
Benefits include hosp. insurance, holidays, vacation and sick leave. Day hours during summer / evening hours during school year. Submit letter of application and resume form to Luverne Public Schools, 709 North Kniss, Luverne, MN 56156.

EOE

Attention Caregivers

New Position up to 20 hours a week in Luverne with the potential to work fulltime.
Wildrose Home Care is looking for **caregivers** to help with Morning and Bedtime cares for a female client. Flexible scheduling available! Call for application
507-337-1101



Bomgaars is Hiring!

We're looking for **Full and Part-time Cashiers** to join our team today.

We offer competitive wages, flexible hours and an employee discount on purchases.
PLUS earn an extra \$2.50 on the weekends.

The ideal candidate will be reliable, ambitious, detail-oriented and possess the ability to multi-task.

Pre-employment drug screen required. EOE

APPLY at the Luverne Bomgaars Store
405 W Interstate Dr., Luverne, MN



NEW OPPORTUNITIES!

Delivery Specialist (CDL)

- Safely deliver animal health products to farmers across the United States
- CDL required to operate tractor and trailer
- Ensure accurate, timely and bio-secure delivery to customer location

Purchaser

For **Pipestone Repairs & Maintenance Department**

- Maintain & organize inventory of supplies for PIPESTONE Repairs & Maintenance department
- Communicate with maintenance team
- Build vendor connections
- Diversify supply & reduce costs

Order Fulfillment

- Pick, pack & ship supplies, and animal health products
- Receive product accurately & timely
- Inventory counts & controls
- Understand/adherence to bio-security requirements

Check out the full job descriptions and apply on our website at www.pipestone.com or call 507-825-2532



HIGH SCHOOL + COLLEGE CREDIT

Juniors and Seniors: Earn credits that count for both high school and college with courses at Southeast Technical College.

Registration now open.

SCHOLARSHIPS AVAILABLE

SOUTHEAST
Technical College

605-367-6040 | admissions@southeasttech.edu
SOUTHEASTTECH.EDU/DUALCREDIT



LAND FOR SALE

LAND FOR SALE

LAND FOR SALE

LAND FOR SALE

LEGAL: Approximately 113.93 acres located in the SW1/4 of 29-102-46, Rock County, MN, unimproved, highly productive farmland.

TERMS: Sealed bids will be accepted until 5:00 p.m., November 18, 2022, at 130 East Main, Luverne, MN. All bidders who have submitted a bid prior to said deadline will have the opportunity to submit additional bids until property is sold. Highest bidder will be required to sign a Purchase Agreement with ten percent (10%) non-refundable earnest money down payment on the date of the sale and the balance at closing with possession going to Buyer for 2023.

Sale is subject to approval by the Heirs of Ramona Vlastuin. For further details and an information packet contact Douglas Eisma, Eisma & Eisma, Attorneys at Law, (507) 227-2829.



mcan

Minnesota Classified Advertising Network



WANTED TO BUY

WANTED:

ALL 1970S MOTORCYCLES
Running or not. Titled or not. Cash in exchange. Sell now while prices are high! Call Dan at 612/720-2142

Classified Advertising that is Easy!

THE MINNESOTA CLASSIFIED AD NETWORK

Make an impact with your advertising dollar with classified advertising that reaches over 2.5 million readers!



Your newspaper representative can provide complete details.
The 2x4 Network is a program of the MNA, phone 800-279-2979

MISCELLANEOUS

THE GENERAC PWRCELL

a solar plus battery storage system. Save money, reduce your reliance on the grid, prepare for power outages and power your home. Full installation services available. \$0 Down financing option. Request a free, no obligation quote today. Call 888/913-5895

DISH NETWORK

\$64.99 for 190 Channels! Blazing fast internet, \$19.99/mo. (where available.) Switch & get a FREE \$100 Visa gift card. FREE voice remote. FREE HD DVR. FREE streaming on ALL devices. Call today! 855/562-4309

DONATE YOUR CAR

truck or boat to Heritage For The Blind. Free 3-day vacation, tax deductible, free towing, all paperwork taken care of 844/220-9501

MISCELLANEOUS

DIRECTV STREAM

Carries the most local MLB Games! CHOICE Package, \$89.99/mo. for 12 months. Stream on 20 devices in your home at once. HBO Max included for 3 mos. (w/CHOICE Package or higher.) No annual contract, no hidden fees! Some restrictions apply. Call IVS 855/803-9309

ENJOY 100% GUARANTEED

delivered-to-the-door Omaha Steaks! Get 8 FREE Filet Mignon Burgers! Order The Butcher's Deluxe package this holiday season- only \$99.99. Call 855/402-7187 and mention code 71941ALG or visit www.omahasteaks.com/GiftGiving3287

Advertise here statewide in 230+ newspapers for only \$279 per week! Call 800-279-2979

Day care/from 1A

center for 186 kids (average 163 operating capacity). This is 24 infants in three rooms, 42 toddlers in three rooms, 60 preschoolers in three rooms and 60 school-age children in two rooms.

Operating at full capacity, the center will require a minimum of 35 full-time positions.

Among them will be a licensed director at \$28 per hour,

“At this wage, you’re going to recruit and retain a high-quality director,” Lien said. “You’ll get one to leave Sioux Falls and come to Luverne.”

An assistant director would be hired at \$18 per hour, a teacher at \$17, assistant teacher at \$15, an aide at \$13 and a cook/custodial person at \$15 per hour.

Staffing represents more than 70 percent of a day care operation’s costs, and Lien said it’s the one thing a center can’t afford to compromise on.

‘Quality costs money’

“These wages and benefits packages are well above the average for the state of Minnesota, and it’s with good reason,” she said.

“It’s because you’re a state-of-the-art facility that exists nowhere else in the state of Minnesota for a model that currently doesn’t yet exist.”

She said South Dakota’s lower wages will allow Luverne’s facility to recruit quality staff.

“It creates a draw for people to leave Sioux Falls and come here,” Lien said

Tentative weekly rates proposed in Luverne would be \$208 for infants, \$194 for toddlers, \$180 for preschoolers and \$100 for school age kids during the school year and \$160 during the summer.

These rates are proposed based on studies of local working family incomes.

Lien and other day care center planners said operating at full capacity with all profits accounted for, a center at these rates would be unable to show a profit.

That’s why a good share of Wednesday’s discussion centered on how Luverne’s day care center will be supported.

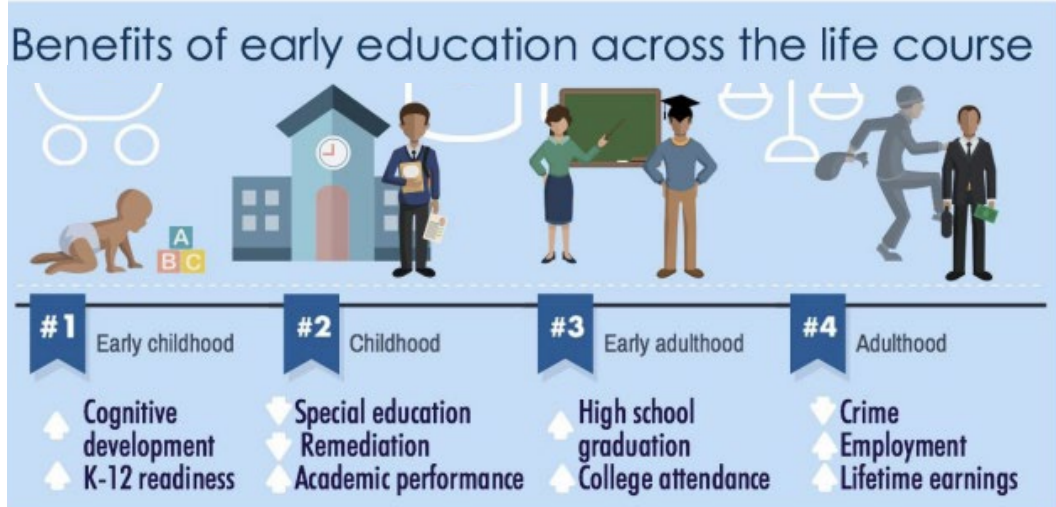
Funding sources

To pay for the \$6.4 million renovation costs, the city is anticipating a federal grant of \$2.6 million, contributions of \$1 million each from the city and county, a \$1.24 million countywide fundraising effort, and a \$500,000 Minnesota grant.

The grants have not yet been realized, and county leaders have not yet agreed to the \$1 million request.

And even after construction is paid for, the center will need help in order to cash flow.

The city of Luverne purchased the 30,000-square-foot Total Card Inc. building for \$515,000 and will renovate it at an estimated cost of \$6.4 million (including architect and engineering fees and center equipment) and lease it to a non-profit board for \$1 per year.



“By having a facility that can provide quality early care education to your youngest residents, it’s going to relieve burdens from the school district and social service programs,” said Trisha Lien, business development specialist with First Children’s Finance.

Working families’ wages can’t afford day care salaries

To understand why it’s so difficult for day care centers in outstate Minnesota to succeed, Lien said it’s important to understand income demographics and economies of scale.

Day care centers in metro areas have access to families earning higher wages and there are more of them to utilize a day care center.

“The larger the center, the more profitable it is,” Lien said.

In the metro area, parents pay \$427 per week for infant care. In outstate Minnesota, it’s \$180.

“Keep in mind, throughout Minnesota, the cost to provide child care

doesn’t change,” Lien said.

“Staff isn’t paid more in the metro, food doesn’t cost more in the metro, The difference is what you can charge based on the average household income. That’s why the model is so broken, and it requires public and private investment to make it sustainable in greater Minnesota.”

She said the annual price of child care in Minnesota for infants is \$16,000 for a center.

“It has surpassed the average annual tuition and fees at a public four-year college or university,” she said.

Part of that is due to licensure and standards in Minnesota.

“South Dakota and

Iowa have very different licensing requirements,” Lien said. “South Dakota doesn’t have a ‘Quality rating and approval system’ and licensing requirements are minimal.”

So, that means quality comes at a price, and it shows how we need outside investment.

For a center to succeed, communities need to subsidize operations

Mayor Pat Baustian said the long-term community benefits will be well worth the investment, and he said the city of Luverne is committed to the day care investment no matter what.

“We can’t afford not to,” he said. “Child care is a critical part of our social infrastructure in a healthy

community.”

He said when local leaders first started looking at day care six years ago, there were 51 home day cares in Rock County. Today we have 31.

“Parents need access to day care to maintain a productive lifestyle and employment,” Baustian said. “Without quality day care and education for children, that directly impacts our area.”

He said businesses were coming to Luverne’s EDA saying they can’t get employees to work for a full eight hours because they have to leave early or come in late to pick up kids.

“As the county looks to recruit a new manufacturer, the non-negotiables that we know about are education, health care and day care,” Baustian said.

“We want to be part of the solution. Child care is essential for our continued economic development in our cities and county.”

Growing tax base means government can afford to subsidize day care

He also said Luverne and Rock County are well-positioned to afford the investment in child care.

“We have been fortunate to see economic development while struggling with a day care shortage,” Baustian said.

He mentioned Lineage

Logistics \$25 million cold storage warehouse and 80 new jobs. Also Premium Minnesota Pork’s \$40 million smoke house will bring more than 80 jobs, and the county is currently courting a major manufacturer.

These multi-million-dollar projects add tax base, and their property taxes bring in extra income to support further growth and important city amenities.

In this case, Baustian said the growth will help the city subsidize day care operations to the tune of \$50,000 per year

“This is an essential service,” he said.

“Property insurance, utilities costs, security costs, lawn care, snow removal ... We need to cover those costs in order to make this as successful as we can. We know it will cost money, but it’s an essential piece of our long-term continued growth.”

Baustian said he hoped the county and others will support the effort.

“If we’re looking at attracting and maintaining employees to Luverne and Rock County, this is a must.”

“Healthy communities need day care, health care, education ... We cannot afford to kick this down the road any further. We would encourage the county to be our partner in the capital campaign as much as possible.”

Nothing says Christmas like a card from home...

Look for our display at *Christmas in the Park!*

SEND A CARD TO A SERVICE MEMBER!

Let our soldiers, airmen and women, sailors and marines know you are thankful for their service!

- Use a greeting card - or make your own!
- Do NOT put your card in an envelope.
- Avoid using glitter - it’s a problem if it gets on uniforms.
- Avoid political statements or religious discussions, but feel free to let them know you are praying for them!
- Don’t date your card/letter because they will be sent out all year long as part of MILITARY MISSIONS care packages.

Cards will be collected at the park or drop them off at The Star Herald office.

Do you have a loved one serving in the military?
If you’d like cards sent specifically to your service member, please contact The Star Herald office with their address and we will make sure some of the cards get sent to them!
Questions? Please contact us at 507-283-2333.

Rock County **STAR HERALD**



School history records rewritten

For the first time in LHS school history, not one, but two, fall sports teams claimed section titles. The girls' tennis and the boys' cross country teams accomplished feats no other LHS girls' tennis or boys' cross country team completed before in claiming the section trophy that took them to the MSHSL championships, where the boys' cross country team placed second, something no other LHS boys' cross country team has ever done.

Learn more about the journey these two teams completed.

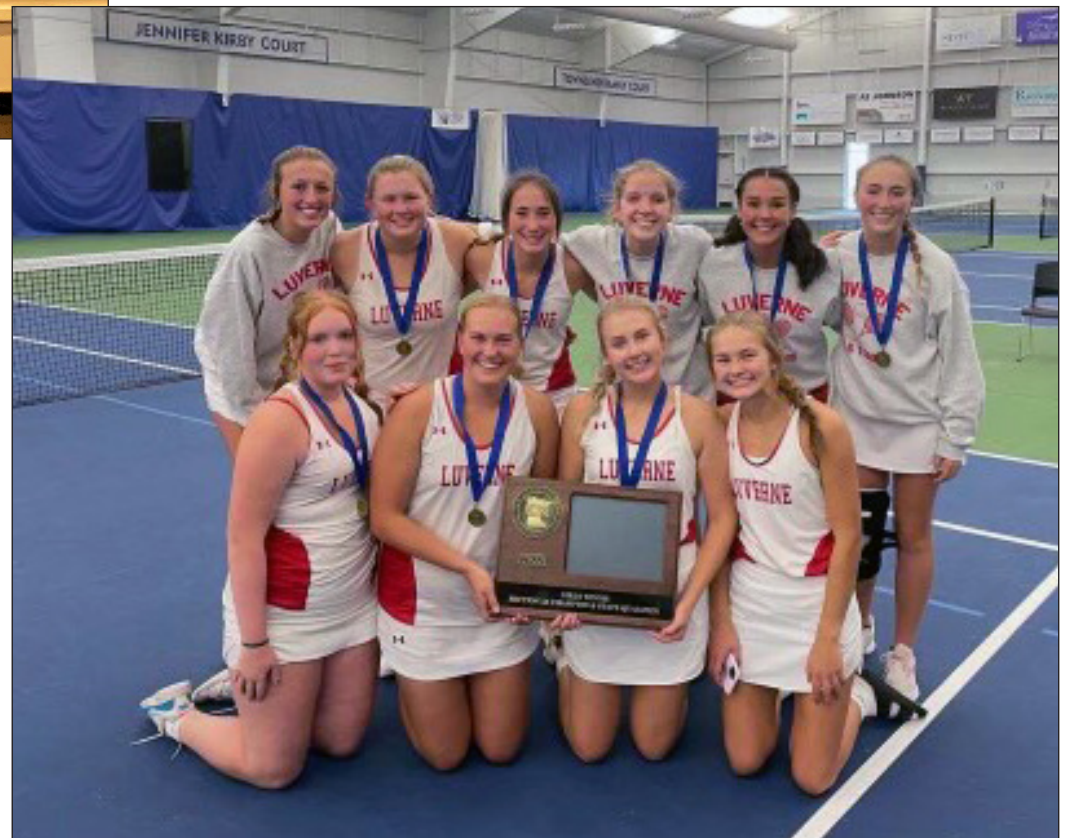
The girls' tennis team story is on pages 2-3 and the boys' cross country team on pages 4-6.

LHS Boys' Cross Country team

Luverne's boys' cross country team poses with the second-place trophy Nov. 5 at the Minnesota State High School League cross country championships. Pictured (front row, from left) are Owen Janiszski, Camden Janiszski, Carsen Tofteland, Ryan Fick, (back) Pete Janiszski, Sage Viessman, Kaleb Hemme, Zach Terrio, Leif Ingebretsen, Dylan Ommen and Jodi Nelson.

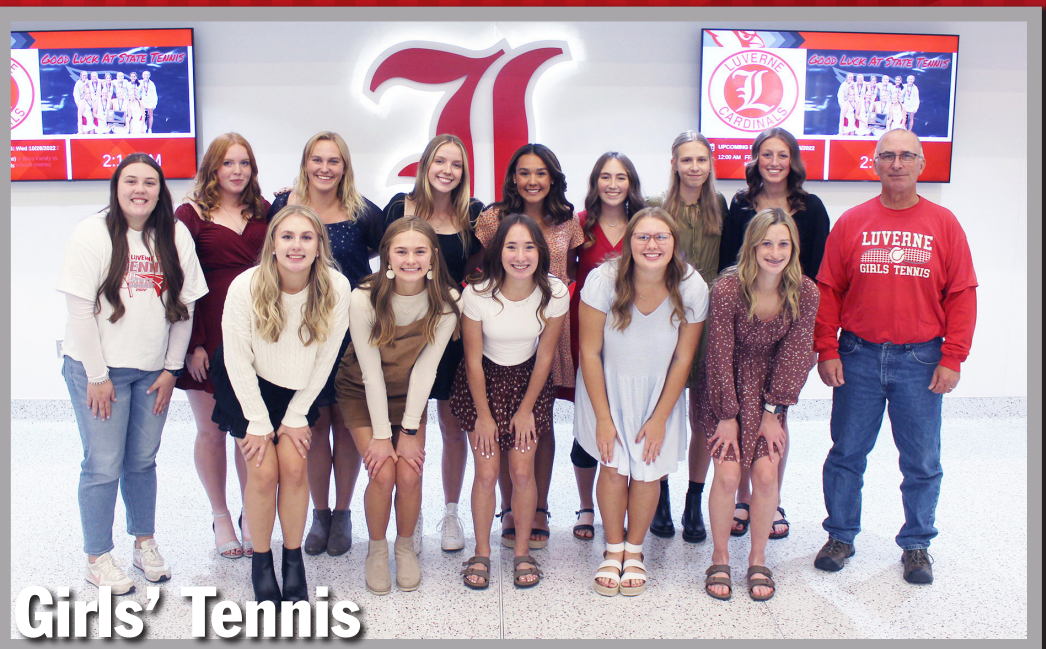
LHS Girls' Tennis team

Luverne's girls' tennis team is the first in school history to claim a Section 3A championship trophy Oct. 6 in Sioux Falls. Pictured (front row, from left) are Priscilla Muehr, Tori Hemme, Katharine Kelm, Sarah Stegenga, (back) Augusta Papik, Caitlin Kindt, Morgan Hadler, Cassandra Chesley, Roselynn Hartshorn and Rayann Remme.



Congratulations
to the state competitors
in Tennis and Cross Country!

Sunshine Foods
 WE HAVE THE FOOD TO FUEL YOUR ATHLETE!



Girls' Tennis

Cross Country

The 13-member Luverne High School girls' tennis team consists of (front row, from left) Katharine Kelm, Sarah Stegenga, Morgan Hadler, Caitlin Kindt, Corynn Oye, (back) Ella Lanoue, Priscilla Muehr, Tori Hemme, Cassandra Chesley, Roselynn Hartshorn, Rayann Remme, Emma Nath, Augusta Papik and coach Jon Beers.

Qualifiers for the Minnesota State High School League State Cross Country Championships include (front row, from left) Ella Schmuck and Jenna DeBates, (back) boys' team members of Leif Ingebretsen, Dylan Ommen, Kaleb Hemme, Sage Viessman, Ryan Fick, Owen Janiszski, Carsen Tofteland, Camden Janiszski, Zach Terrio and senior manager Camden Hoven.

Congratulations to the LHS girls' tennis team on a great season!

Girls' tennis team earns first section championship

By Mavis Fodness

The Luverne High School girls' 2022 tennis season took many turns before the team cemented their place in school history. They are the first girls' tennis team to win a section championship and earn the right to represent Section 3A in the Minnesota State High School League tennis tournament.

The team started the season red hot with seven straight wins before suffering their first loss to Fairmont in a close 3-4 match.

Fourth-year coach Jon Beers regularly moved players around in the team lineup, all in preparation for the section tournament. He knew the loss wouldn't deter the team's goal of becoming section champions. "The girls will learn from this and will only get better," Beers said.

And play better they did.

The team ended the season with a 13-6 win-loss record, amassed a 9-1 record against Section 3A schools, and went 4-3 against other Big South Conference schools.

Luverne's strong doubles play often put the Cardinals on the winning side of numerous 4-3 matches.

At the Oct. 24 pep fest send-off for the girls' tennis team to play the next day at the state tournament, Beers pointed to the team's

early season win at the doubles tournament in Worthington as a precursor to their successful season.

"We also scored more points than any other Luverne team has scored before," he said.

The ability to score points became apparent as Luverne entered the section playoffs.

The team was seeded No. 2 behind conference champions Pipestone Area (who was the only Section 3A school to win a match against the Cardinals).

Luverne opened the quarterfinals against Benson-Kerkhoven-Murdock-Sunburg at home Tuesday, Oct. 4, but rain postponed the match until the following day. Just as the final match was being played, rain returned and postponed its finish. Because the courts were not drying fast enough after the late afternoon rain, the match was moved to Worthington.

"I was a little worried how the girls would do after the rain delay, but we got to Worthington, and Augusta (Papik) and Caitlin (Kindt) finished the match with a great tie-breaker win in the second set to get us the win," Beers said.

Luverne was matched up with Lac Qui Parle in the semi-finals match. A lineup change for the Cardinals brought the match down

Girls' tennis, continued on page 3B



Top, left: Caitlin Kindt makes a serve against her No. 3 singles Pine City opponents Tuesday afternoon, Oct. 25, in the consolation round of the state Class A tennis tournament in Minneapolis. With the loss, the Cardinals ended the 2022 season with a 13-6 record.

At left: LHS girls' tennis coach Jon Beers (center) gathers team members together at the state Class A tournament Tuesday, Oct. 25, in Minneapolis. Although the team did not win a match at the state level, Beers reminded the team they are the first in LHS history to qualify for the MSHSL event.

Below: Junior Cassi Chesley waits for the serve against her Providence Academy opponent with her No. 2 doubles partner, Roselynn Hartshorn (not pictured) in the quarter final round of the Minnesota Class A State Tennis Tournament Tuesday morning, Oct. 25, in Minneapolis.

Contributed photos



Henning
CONSTRUCTION INC.
ADRIAN - LUVERNE, MINNESOTA
201 Louisiana Ave | Adrian, MN | 507-483-2486
www.henninginc.com

CATTNACH
INSURANCE AGENCY
Auto • Farm/Home • Crop/Hail • Commercial Life • Health • Long Term Care • Disability
info@Cattnach.com South Hwy. 75, Luverne, MN
www.Cattnach.com 507-283-8383

Country Cupboards
"Where Fine Craftsmen Produce Work With Pride!"
2 miles south of Luverne on Hwy. 75
Phone 507-283-8176

Luverne
BODY SHOP
AUTO GLASS
KEVIN AAKER
kevin@luvernebodyshop.com
ANDREW HEMME
andrew@luvernebodyshop.com
920 Commerce Rd.
Luverne, MN 56156
507.283.8711

Luverne Public Schools
www.isd2184.net
a place to grow...
a place to excel...
a place to stand out...

FREE in-home water test
Culligan Water
of Southern Minnesota
CULLIGANMN.COM
507-283-9105

HARTQUIST
FUNERAL & CREMATION SERVICES
Celebrating Life
Pipestone Luverne Lake Benton Jasper Tyler
www.HartquistFuneral.com

Luverne Area
Community Foundation
102 E. Main St. • P.O. Box 623 • Luverne, MN 5616
www.luvacf.org • (507) 220-2424
Give Where You Live
today, tomorrow & beyond

Mark's
PLUMBING, HEATING, A/C, LLC
507-283-9245
TEMPSTAR
Heating and Cooling Products
608 W. HATTING, LUVERNE
MARK & CINDY KURTZ, OWNER
Master Plumber Lic. #066849-PM



Mavis Fodness photo
An afternoon pep fest on Oct. 24 celebrated the 13-4 Cardinals, and coach Jon Beers (far left, at podium) congratulated the team that includes (from left) Caitlin Kindt, Emma Nath, Corynn Oye, Augusta Papik, Cassandra Chesley, Morgan Hadler, Roselynn Hartshorn, Rayann Remme, Sarah Stegenga, Tori Hemme, Katharine Kelm, Ella Lanoue, Priscilla Muehr, and assistant coach Zoe DeBates.

"Girls, we are proud of you," Beers (pictured below) said. "We are going to go up and represent Luverne the best we can, have some fun and hopefully make a lot of good memories."



Contributed photos
Sarah Stegenga and Katherine Kelm warm up at the Minnesota State High School League state girls' tennis team championships. The partners played at No. 1 doubles. In the individual section qualifying tournament, the duo was one match away from reaching the individual tournament. **Below:** Rayann Remme battled injury this season before returning for the state tournament, where she played No. 1 singles.

LHS girls' tennis team set a school record in 2022

Girls' Big South Conference runner-up

Girls' Section 3A champions
(first time)

Season record: 13-6

Individually, girls' team members on All-Conference honorable mention team:

Katharine Kelm, Sarah Stegenga and Roselynn Hartshorn.

Girls' tennis, from page 2B

again to Caitlin Kindt, who was playing No. 4 singles.

"She split the first two sets with her opponent and the third set came down to a tie breaker," Beers said. "Caitlin ended up winning the tie breaker 9-7."

The team win put Luverne in the section finals against Pipestone Area. This time the Cardinals came out on top of the 4-3 win, with the final match again coming down to Kindt.

"I think all the girls had a great day, but Caitlin was the last one on the court with both semis and the finals and was able to win both matches," Beers said.

Team members moving on



to state included Katharine Helm, Sarah Stegenga, Roselynn Hartshorn, Cassi Chesley, Rayann Remme, Augusta Papik, Caitlin Kindt, Morgan Hadler, Emma Nath, Corynn Oye, Tori Hemme, Priscilla Muehr and Ella Lanoue.

Earning individual honorable mention Big South Conference honors were Sarah Stegenga, Roselynn Hartshorn and Katharine Helm.

Coach Beers said their goal to be Section 3A champions was achieved through hard work and perseverance.

"You never know just how good the other section teams will be each year, but I always felt that if we played our best, we had a really good chance at

making it to state," he said. "I know the girls are excited for the opportunity to play some of the best teams in the state."

Luverne opened state play Oct. 25 against Providence Academy of Plymouth at the Reed-Sweatt Tennis Center on the University of Minnesota Campus in Minneapolis. A 0-7 loss brought the Cardinals to meet Pine City in the consolation round, again dropping a 0-7 decision.

Beers repeated his pride in the Cardinal girls' tennis team and their 2022 accomplishments.

"The girls had a great season and should be very proud of everything they accomplished this year," he said.

808 S. Kniss
Luverne, MN
507-283-2381

Buffalo Ridge
INSURANCE

Elbers Auction Service
"Quality Auctions Since 1988"
Your complete auction service • No sale too big or too small

Keith Elbers, Auctioneer / Real Estate Sales
www.ElbersAuction.com Lic #67-62

office: 507-962-3433
home: 507-962-3432
cell: 507-920-6131
keith@realestateretrievers.com

Real Estate Retrievers

Loosbrock Electrical Construction, LLC

Scott Loosbrock
Owner

Licensed • Bonded • Insured
Residential • Commercial • Industrial • Agriculture

scott@loosbrockelectric.com
www.loosbrockelectric.com 507-360-5418

Meulebroeck, Taubert & Co., PLLP
Certified Public Accountants

* Tax planning & preparation • Accounting, Payroll & Bookkeeping services
* Agri-plan™ - pretax medical deductions

109 S. Freeman, Luverne, MN
507-283-4055

CWG
Business Insurance.
Period!

Tri-State Region
Ten Roundwind Road
Luverne, Minnesota 56156
(507) 283-9561; (800) 533-0303
www.cwgins.com

Continental Western Group
A BERKLEY COMPANY

HOWLING DOG SALOON

507-449-0454

NOW HIRING!

Luverne Building Center

102 E. Maple
Luverne, MN
507-283-9151

Luverne
MINNESOTA
Love the life!

City of Luverne
305 East Luverne Street
Luverne, MN 56156
City Office 507-449-2388
Public Works 507-449-5043
Public Utilities 507-449-2388
www.cityofluverne.org

Dr. Tanner Brolsma
LUVERNE Family Dental

115 East Main Street
Luverne, MN 56156
(507) 283-9129

Congratulation to the boys' cross country team!

They've reached heights no LHS boys' cross country team has ever reached before

By Mavis Fodness

A winning streak developed this fall when the Luverne High School boys' cross country team earned its first section championship in school history and another trip to the Minnesota State High School League Class A Cross Country Championships in Northfield on Nov. 5.

According to head coach Pete Janiszkeski, 2022 was the 25th year out of the past 26 years that Luverne has sent at least one person to the state meet.

School history was again made when the boys' team ran fast enough to reach the state awards podium. They claimed the silver medal and were just three points away from first-place Heritage Christian of Maple Grove.

"This was absolutely an amazing race," Janiszkeski said at the state meet. "We are the best team ever!"

Individually, sophomore Owen Janiszkeski placed fifth followed by all-state teammates Ryan Fick and Camden Janiszkeski.

"You all ran faster today than you did at sections last week," Janiszkeski said. "We had three individuals in the Top 25 — we've never done that before."

The Luverne boys' team first made school history Oct. 27 when they won the Section 3A Championship.

At the state meet, Luverne's runners averaged under 17 minutes in the 5,000-meter race that included 160 runners.

Luverne's results included:

- Sophomore Owen Janiszkeski, fifth, 16:09.09
- Junior Ryan Fick, 15th, 16:37.87
- Senior Camden Janiszkeski, 25th, 16:42.60
- Sophomore Leif Ingebretsen, 77th, 17:27.65
- Sophomore Sage Viessman, 80th, 17:29.65
- Senior Carsen Tofteland, 95th, 17:45.10
- Sophomore Kaleb Hemme, 134th, 18:30.49

Senior Dylan Ommen and junior Zach Terrio were alternate runners for the state meet.

The second-place finish at the state championships capped off a successful year for the boys' team.

Janiszkeski outlined the season at the team's send-off at the Nov. 3 pep fest in the middle-high school performing arts center.

"They've won the most meets that they've ever won. They're probably the most talented and fastest group that we've had, and that testifies to all your hard work," he said.

As a team, the boys won six meets, including the Big South Conference (also a first in school history) and the Section 3A championship.

Janiszkeski was optimistic going into the state meet.

"If things go well, we can probably be in the top five, and if we have great races and perform at our very, very best, we have a shot at making it to the podium," he said.

Last year the boys' team was the Section 3A runners-up. They finished ninth out of 16 teams at the 2021 state meet.

Opening the 2022 season, Luverne was ranked fourth by the Minnesota Cross Country Coaches Association.

Individually, Camden Janiszkeski was ranked eighth and brother Owen was ranked ninth. At last year's state meet, Camden finished 15th and Owen 17th.

The week before the state meet, Luverne was still ranked fourth in Class A and Owen moved to sixth

Boys' cross country, continued on page 5B



Mavis Fodness photos

Owen Janiszkeski (No. 1088) paces a group of runners including his brother, Camden (No. 1087) at the Minnesota State High School League cross country championships Nov. 5 in Northfield. It's the second year the brothers have run together at the state meet, with the first being in 2021. Owen finished the 5,000-meter race in fifth place with Camden finishing in 25th. Below: Ryan Fick (No. 1084) runs easily with a small group of runners. He finished 15th individually in the cool, rainy conditions.



State FarmTM

Jason Vote, Agent
311 W Gabrielson Rd #3
Luverne, MN 56156
507-283-4401

Cannell
Car Care
800-844-2341

Sunshine Gas

North Highway 75, Luverne (507) 283-4889

CONGRATULATIONS CROSS COUNTRY & TENNIS

A-1 JET, LLC.
Waterjet Cutting and Product Design
401 W. Edgehill Street, Luverne, MN 56156
(605) 335-1538

CHS

Dingmann
Funeral Home • Cremation Service
www.dingmannandson.com

Luverne 507-283-4567
Worthington 507-372-4250
Adrian 507-483-2761

Bill Korth
Auction Service
Licensed Auctioneer

710 N. Oakley
Luverne, MN 56156
Home: 507-283-4766
Cell: 507-227-4958

MINNWEST BANK

116 East Main Street • Luverne • 507-283-2366
Hwy. 75 • 800 South Kniss • Luverne • 507-283-9131
www.minnwestbank.com • Member FDIC • MoneyLine 888-616 BANK

Luverne Area Chamber & CVB

Luverne, MN 56156 ~ 507-283-4061

Quality Service Since 1927!

McClure Electric
121 N. Cedar, Luverne, MN | 507-283-4716

Alan M. Aanenson, owner

Heartland Mutual Insurance Company
Specializing in Farm & Home Insurance

"Serving our Policyholders for over 125 years"

Lismore • 507-472-8216 | Luverne • 507-283-9182

BILL'S WATER CONDITIONING
BRANDON WATER SOFTENER SERVICE
Family owned since 1971

SERVICE • RENTAL • SALES
Luverne: 507-283-4448 Brandon: 605-582-6585
www.billswater.com



Mavis Fodness photos

The Luverne boys' cross country team (in white, third from left) prepares to leave the starting line Nov. 5 for the Class A championship at St. Olaf College in Northfield. The team returned for the second consecutive year, finishing ninth as a team last year. This year, the boys made history by becoming the first LHS boys' cross country team to reach the awards podium with a second-place finish out of 16 teams. Three runners— Owen Janiszkeski, Ryan Fick and Camden Janiszkeski — finished in the Top 25, also a first in LHS history.



Leif Ingebretson (No. 1086) and Sage Viessman (No. 1092) race to finish 77th and 80th respectively helping the Luverne boys' cross country team to a history-making second place Nov. 5 at the MSHSL Class A boys' cross country championships in Northfield. **Below, left:** Senior Carsen Tofteland nears the finish of the 5,000-meter cross country race. **Below, right:** Kaleb Hemme.



Boys' cross country, from page 4B

individually. Camden, who battles anemia, was no longer ranked in the state.

Camden finished 25th individually at the state meet.

"It was a little disappointing, especially how hot I started out," Camden, a senior, said. "I was thinking this was going to be the perfect season, but things were out of my control so I am rolling with the punches."

Two mantras were used to motivate the team during the 2022 season, according to team captains Camden Janiszkeski and Carsen Tofteland.

Unofficially, the mantra of "M.I.L.L.R." or "Man I Love Running" was used in fun.

"It was something fun we picked up since we started making YouTube videos to document our season," Tofteland said. "It is something we can have a little fun with during the season and lighten up the mood every once in a while."

The official mantra for the 2022 season was "Job's Not Finished."

Janiszkeski said he and his teammates embraced "Job's Not Finished" because everyone can get just a little bit better and that their job as athletes is really never finished.

"We set the goal at the beginning of the season to be on the podium or on the top of the podium (at state), so our job was never finished," Janiszkeski, a three-time state qualifier, said.

On Nov. 5 the Luverne boys' team had their best day. "We all did our best and had our best day," Tofteland said.

Also, as a team, the boys excelled as students.

Both the Luverne girls' and boys' cross country teams earned All-State team academic gold for a team grade point average above 3.75.

Individually, Camden Janiszkeski and Jenna DeBates earned individual All-State academic honors.

DeBates, Schmuck represent Luverne girls at state

As the cross country season got underway in October, junior Jenna DeBates was ranked the third-highest individual girl runner in Class A, according to the rankings by the Minnesota Cross Country Coaches Association.

She didn't disappoint coaches as she qualified for the Nov. 5 state championships in Northfield for the fifth-straight year.

Joining DeBates in Northfield was teammate freshman

Boys' cross country, continued on page 6B

TITAN MACHINERY
410 W Koehn Ave · Luverne, MN
507.283.2319
www.titanmachinery.com




TOP NOTCH
Car Wash
A Notch Above the Rest
305 Mag Road · Luverne, MN



VERSTEEG EXCAVATION
Tree Removal | Grain Hauling | Excavating/Demolition
Conservation Work | Snow Removal | Trucking

CHAD VERSTEEG
507-227-2522
1432 150th Ave.
Luverne, MN 56156



Luverne ACE
So much more than just a Hardware store
210 East Lincoln · Luverne · 507-283-4161



EISMA AND EISMA
ATTORNEYS AT LAW
130 East Main St. Luverne MN
507-283-4828



Pizza Ranch
110 E. Main, Luverne 507-283-2379



New Prairie Insulation
Beaver Creek, Minn.
507-673-2548



Nutrien
Ag Solutions™
612 W Hatting Street, Luverne, MN 56156
www.nutrienagsolutions.com · 507-449-7679



First Farmers & Merchants
We believe in you.
Member FDIC. And the community.

FREE Mobile Deposit!
Luverne 507.283.4463 For more details visit www.ffmbank.com Find us on FACEBOOK



DEN HERDER
CONSTRUCTION, INC.
P.O. Box 522 · Luverne, MN 56156-0522
507-920-8916 or 507-920-8917



JOHN DEERE | **C&B**
C&B — Luverne



Kozlowski
Insurance Agency & Financial Services, Inc.
212 S Kniss, Luverne • (507) 283-3704 or (877) 631-3704



Boys' Big South Conference champions
(first time)

Boys' Section 3A champions
(first time)

Boys' State Class A second place
(first time a boys' team placed in the top three)

Individually, boys' team members on All Conference team: Owen Janiszkeski, Ryan Fick.
All Conference honorable mention: Camden Janiszkeski and Sage Viessman.

Individually, girls' team members on All Conference team: Jenna DeBates and Ella Schmuck.
All Conference honorable mention: Grace Ingebretsen and Khloe Visser.

LHS' boys' cross country team set school history in 2022



Mavis Fodness photos

At the Nov. 5 awards ceremony, the Luverne boys' cross country team receives their second-place medals from Minnesota State High School League Officials. The boys wear matching T-shirt or sweatshirts with the season's fun mantra of "M.I.L.R." or Man, I Love Running." Luverne team members pictured from left include Camden Janiszkeski, Owen Janiszkeski, Carsen Tofteland, Ryan Fick, Sage Viessman, Kaleb Hemme, Leif Ingebretsen, alternate Zach Terrio, alternate Dylan Ommen, assistant coach Jodi Nelson and head coach Peter Janiszkeski. **Above:** Fifth-place medalists Jenna DeBates and Owen Janiszkeski.



The start finds Ella Schumuck (813) and Jenna DeBates (812) running with other Section 3A individual qualifiers in the Nov. 5 state cross country Class A girls' race as rain drizzle fell in into Northfield that kept temperatures in the high 30s.

Boys' cross country, from page 5B

Ella Schmuck.
Coach Pete Janiszkeski asked DeBates at the Nov. 3 pep fest for the cross country program if the fifth time gets any less special.
She shook her head, "No."
"Point being," Janiszkeski said, "they've put in a lot of hard work, and any time you qualify for a state competition it's a tremendous accomplishment of the work they put in."
DeBates finished fifth out of 158 runners on the 5,000-meter course. Schmuck finished 47th.
This year's meet was the first either runner ran without an entire Luverne team beside them. The girls finished third at the section meet and didn't qualify for the state meet.
"I don't think it hit either one of us until we were standing in the starting line and it was just the two of us," DeBates said.
Schmuck admitted that she was nervous at the starting line.
"It was kind of scary," she said. "I had been there before so I was prepared."
The experience will be put to good use next year, according to Coach Janiszkeski.
"That's what fuels you to grow, improve and get better as a competitor."

Wayne's BODY SHOP
TIM WALGRAVE • JOSH VANDENHOEK • SETH MILLER
310 W. Hatting Street, Luverne MN
Office: 507-449-8315 Fax: 507-449-8326

Viking Electric LLC
Tim Gangestad
Owner
(507) 290-2595
vikingelectricmn@gmail.com
Conquering all of your electrical needs!
Residential • Commercial • Agricultural

SECURITY SAVINGS BANK
310 Gabrielson Rd.
Luverne MN 56156 • 507-449-6000
Member FDIC

CLEVERINGA CONSTRUCTION, INC.
507-920-5631
Merlin Cleveringa
Adam Uithoven 507-227-1770 | Derek Sandbulte 507-227-1065
Luverne 507-283-2698 Home Lic. #BC-20552185

Real Estate Retrievers
Allstate Realty Team ~ Rewarding you with Results
LUVERNE, MN 507-283-4216
HILLS, MN 507-962-3433
PIPESTONE, MN 507-562-0450
EDGERTON, MN 507-631-1717
REALESTATEREtrievers.COM

ROCK VETERINARY CLINIC, P.A.
1295 101st St
Luverne, MN 56156
Large and small animal services
(507) 283-9524 • 1-800-632-8838
rockvetclinic@gmail.com

KLOSTERBUER & HAUBRICH, LLP
DONALD R. KLOSTERBUER
JEFFREY L. HAUBRICH
DAVID A. OWENS
120 N MCKENZIE, LUVERNE, MN
507-283-9111

Quality PRINTING, INC.
PAPER, SIGNS & PROMOTIONAL ITEMS
401 W Hatting St., Luverne, MN 56156
507-283-1716
qualityprinting-luverne.com

ROCK COUNTY ROC CHIROPRACTIC
MICHAEL P. SMITH, DC
507-283-2561
103 E. MAIN
LUVERNE
- CHIROPRACTIC CARE
- MASSAGE THERAPY
- POSTURAL RESTORATION
- LASER THERAPY
- CUSTOM ORTHOTICS
- NUTRITIONAL SUPPLEMENTS
WWW.ROCKCOUNTYCHIROPRACTIC.COM

H&A HEIDEBRINK & ASSOCIATES
224 E MAIN ST
LUVERNE, MN 56156
PHONE 507-283-4085
HEIDEBRINKAGENCY.COM
FARM • HOME • BUSINESS • LONG TERM CARE • AUTO • CROP • LIFE • HEALTH

Papik MOTORS
Luverne • Rock Rapids • Sibley
LUVERNE 507-283-9171
ROCK RAPIDS 712-472-2595
SIBLEY 712-754-4651
WWW.PAPIK.COM

Rock County Abstract & Title, Inc.
LORI DERAGISCH
President
LDRCAT@iw.net
110 N Oakley St
Luverne, MN
Phone 507-283-8460
Fax 507-283-8461

The Estenson Company, LLC
Call me today for a complimentary insurance review.
Tim Knoll (507) 283-2386
419 E. Main
Luverne
tknoll@iw.net
Allstate
You're in good hands.
Insurance subject to availability and qualifications.
Allstate Indemnity Company, Northbrook, Illinois © 2022 Allstate Insurance

75 Diner
Visit our website for a menu!
920 S Kniss Ave | 507-449-8334 | 75diner.com

Luverne Aquatics & Fitness