



Rock County STAR HERALD

Rock County's oldest business, printing since 1873

Thursday, July 27, 2023

H-BC School Board reviews elementary architect plans

By Mavis Fodness

After months of discussing needs for the new Hills-Beaver Creek Elementary School, board members reviewed the preliminary layout plans Monday night at their regular meeting.

School board and building committee members Tim Bosch, Chris Harnack and Ethan Rozeboom reviewed the architect's (ATS&R) plans and noted some areas that may change.

Building and steering committees have approved general layout for 56,730-square-foot facility. Bid letting for the \$26.5 million elementary school project is set for December.

However, the overall layout for the 56,730-square-foot facility has been agreed upon by both the building committee and the community steering committee that has been working on the project.

Bid letting for the \$26.5 million elementary school project is set for December.

Superintendent Todd Holthaus said the committees will choose between precast panels or

bricks for the school façade and will decide on specific finishes, mechanics and upgrades to utilities prior to the bid letting.

The preliminary blueprints show offices, the preschool and

the proposed day care facility at the front entrance of the elementary school.

The day care is designed for a maximum of 32 children ages 6 weeks to kindergarten age.

Grade levels anchor one side of the building while the gymnasium and cafeteria are on the other side.

Grade levels are grouped as

H-BC building update/see p. 5

Geckos, dragons and isopods ... Oh my!

Johnson brings exotic pets for 4-H exhibits

By Mavis Fodness

As the 2023 Rock County Fair gets underway this week, 4-H'er Ashlyn Johnson hopes for the 10th-straight time to earn a grand or reserve ribbon at the 4-H pet show.

For the past nine years, beginning when she was a third-grader, Johnson has placed first or second in the pet show each year, based on her knowledge and care for the pet she had prepared for the fair.

At her first 4-H pet show in 2014, Johnson, a 2023 graduate of Luverne High School and daughter of Jim and Heather Johnson, exhibited a hamster named Kibbles.

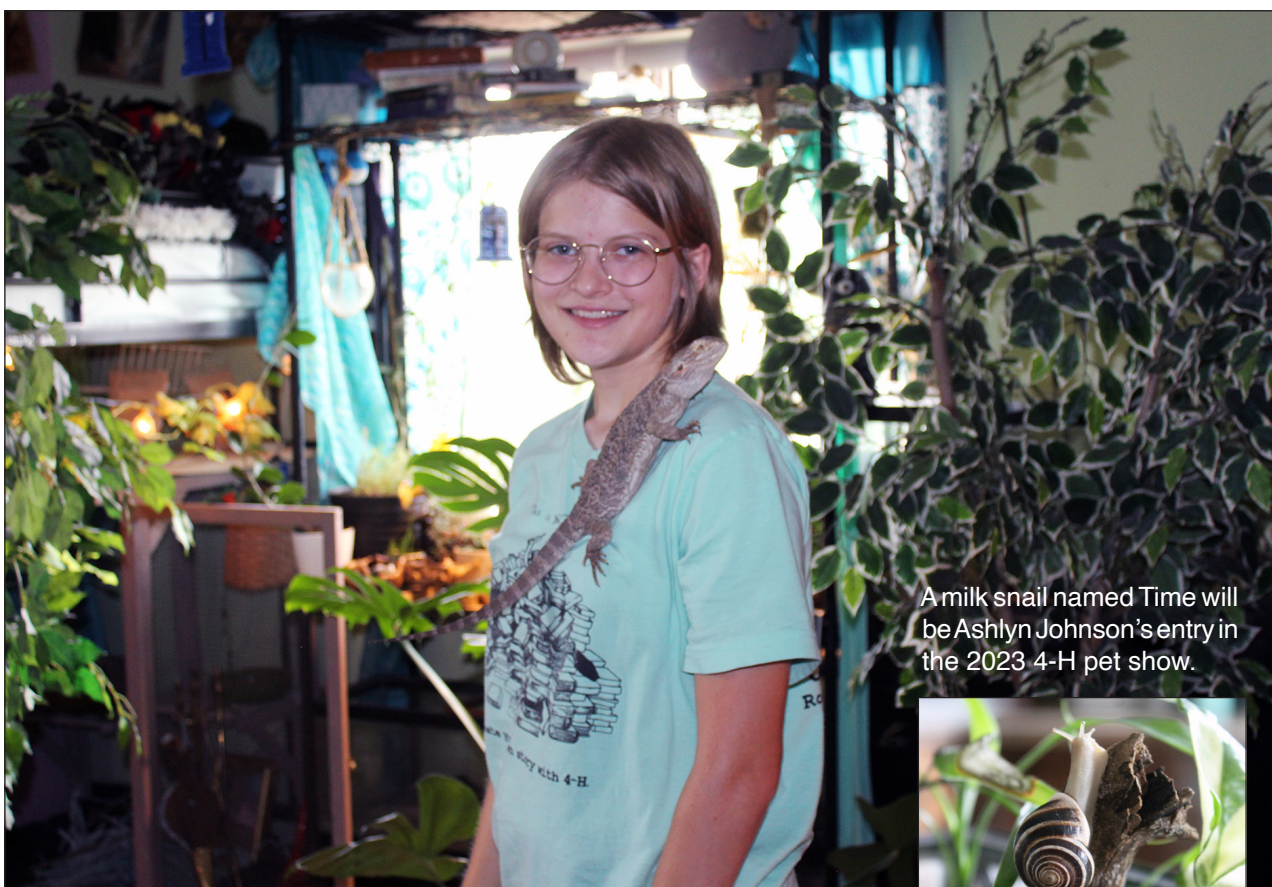
She steers away from exhibiting the more common cat or dog typically brought to the pet show.

Her cat, Charles, forced Johnson to make the more unusual pet choices.

"I wanted to bring my cat one year — he's a little skittish," Johnson said. "As I brought him there (to the fairgrounds), he was just too scared and I didn't want to stress him out. So we brought him home, and I brought my hamster instead."

Since then, she's shown four hamsters (Kibbles, Oreo 1, Oreo 2 and Biscuit), a mouse, a crested gecko, a bearded dragon, isopods and last year's pet show grand champion, a pigeon named Bowie.

In the past decade, Johnson's interest in animals grew. She soon became the one to



Mavis Fodness photo/0727 4-H 2023 Preview Johnson Ashlyn Johnson poses with her 2019 grand champion pet, a bearded dragon named Thorn, which was among Johnson's nine-year streak of winning grand or reserve champion ribbons at the Rock County 4-H pet show. Wednesday, July 26, is the first day of the 2023 Rock County Fair.

A milk snail named Time will be Ashlyn Johnson's entry in the 2023 4-H pet show.



call to rescue various mammals, birds or reptiles in her Christensen Drive neighborhood.

"I am not sure why I like them so much, but ever since I was little, I was interested in bugs and stuff," Johnson said.

The "stuff" has included a mouse named Missy and, by 2018, the first reptile, a crested

gecko named Nix to join the Johnson household as 4-H projects.

Over the years, Johnson has constructed habitats for the reptiles using discarded aquariums and lining them with dirt or sand, selecting plants and other elements to simulate a natural home for her pets

She has turned her bedroom into a sanctuary for her pets that include the 2018 through 2021 grand champion pets.

The 4-H judges have shown great interest in how Johnson chooses and houses her animals.

"I think it's just more fun to

Johnson 4-H pets/see page 8

City reviews \$4 million in 2024 capital expenditures

By Jason Berghorst

The Luverne City Council is considering \$4,039,200 in capital improvements for the proposed 2024 budget.

At their July 19 meeting, council members heard budget requests from city department heads as part of the normal city budget process.

Expenses for water, wastewater, electric, fire, government buildings, parks and recreation, streets, airport, pool and fitness, parking lots, Luverne Loop and civil defense make up this year's requests.

Council members will vote on the proposed capital expenses at an upcoming meeting.

Those expenses will be factored into the city's overall budget that needs to be in place by mid-September's preliminary levy decisions.

Wastewater- \$1,090,450

The Wastewater Department led all departments with a total request of \$1,090,450.

According to city officials, the majority of that expense, \$782,950, will be to extend sewer services for the proposed multifamily housing development in the Sybesma Addition.

"We want to be ready for that

City budget planning/see p. 2

Food shelf puts out plea for donations

By Jason Berghorst

On July 18 Rock County Food Shelf Co-Director Katie Baustian posted a call for donations on the organization's Facebook page.

"It has been a while since our shelves have been this bare," she wrote. "If you enjoy donating items, we are in need of many."

The post included photos of mostly bare shelves at the food shelf location on Maple Street in Luverne along with a list of a dozen specific items most in need.

The post was shared by 55 people and spurred a number of donations in the last week by individuals, organizations, businesses and churches to help restock the shelves.

"We knew that would happen," Baustian said.

"This community has always been so generous; once they knew there was a need, they stepped up. We're so grateful



Jason Berghorst photo/0727 food shelf Katie Baustian and Mary Gehrke, co-directors of the Rock County Food Shelf, recently put out a call for donations after the shelves at the Maple Street location started getting bare.

for that."

Baustian and co-director Mary Gehrke said that even though the shelves are mostly full again, the situation highlights the community need for

the food shelf and for the donations to continue.

The program receives no government funding.

Food shelf /see page 3

County approves letter of support for housing grant

By Mavis Fodness

Commissioners issued a letter of support for the housing project proposed for the city of Luverne.

County administrator Kyle Oldre wrote the support letter for the Southwest Minnesota Housing Partnership (SMHP) project.

"The county board believes the units, consisting of two, three and four-bedroom townhomes, will help address the critical shortage our community currently faces in affordable housing," Oldre wrote.

"The board is also very supportive of the fact that this project includes four units designed for persons with disabilities.

"... please let this letter serve as the county board's very strong support for your efforts."

The board approved the letter of support at the July 11 commissioners meeting after it was requested by Jen Theneman, director of real estate and community

"The county board believes the units, consisting of two, three and four-bedroom townhomes, will help address the critical shortage our community currently faces in affordable housing."

— County Board letter of support

development with the housing partnership.

In her June 26 email to Oldre, Theneman asked for potential fi-

Housing support/see page 2



Food shelf/from page 1

Increased use

The food shelf is open every Thursday from 1 to 3 p.m. and also from 5 to 6 p.m. on the first and third Thursdays of the month.

Families can visit the food shelf twice a month.

The food shelf serves 35 to 48 families per week, an average that is higher than it's ever been.

"Some families have one person, some have up to 10," Gehrke said. "So that's a lot of people being served each week."

The food shelf distributes 1,600 to 1,800 pounds of food per week, which is an average of 40 to 50 pounds per household.

Gehrke said there are new households visiting the food shelf every week.

"Oftentimes they have jobs and may be moving to town for those jobs, but they need the help when there are moving expenses, rent deposits and other things at that same time," Gehrke said.

"We're happy to help them get settled or on their feet in their new community. Some of them may move around more and aren't here as long because of changes in their work."

Other reasons for the increased traffic at the food shelf, according to Baustian, may be higher grocery prices, children home from school in the summer, more retired people on fixed incomes, and changes in government support available to families.

"We ask people if they are using EBT or food stamp benefits, and many say they have recently gotten a job and no longer qualify for those benefits, but they still are in need of support for food," Baustian said.

Those 65 and older comprise another growing population accessing the food shelf.

"It can be very hard to afford groceries on such a fixed income," Gehrke said. "Sixty-five to 75 is our fastest growing group that uses the food shelf now."

Gehrke and Baustian said personal care and hygiene products are also very popular at the facility. Toilet paper, dish soap, toothpaste, laundry detergent and feminine hygiene products are some of the most needed items.

"You don't realize how expensive those items have gotten," Gehrke said.

'Dignity of the person'

The food shelf previously operated in cramped quarters in the basement of the United Methodist Church.

The fact that it now has its own building on Maple Street may be another reason for increased use, Baustian said.

"We are in our second year in this facility now and it's made a world of difference," she said. "To have this larger, open space with a waiting area is just a much more enjoyable experience."

The directors said since the move to the new space, those visiting the food shelf are able to "shop" on their own and even use grocery carts.

"It really is like shopping at the store," Gehrke said. "We want them to feel comfortable."

"It's about the dignity of the person," Baustian said. "That's the big goal."

Gehrke said the food shelf is also working to make the food selection more appropriate for the people of different cultural backgrounds who are served by the program.

"If we can add new foods that are more popular or familiar with people

"Oftentimes they have jobs and may be moving to town for those jobs, but they need the help when there are moving expenses, rent deposits and other things at that same time. We're happy to help them get settled or on their feet in their new community."

*—Mary Gehrke,
Rock County Food Shelf co-director*

from different backgrounds, we definitely want to do that," she said.

Gehrke added that one regular volunteer at the evening shift at the food shelf also speaks Spanish.

"You can just see the peoples' faces light up when they are able to visit with her in their own language," Gehrke said. "All of those things make the food shelf experience more dignified."

Support still needed

The directors pointed out that there are many ways to support the food shelf's continued mission.

Donations of non-perishable food and hygiene products can be dropped off on the east side of the building on West Maple Street, and cash donations are always welcome.

"We purchase about \$3,000 worth of groceries a month," Gehrke said.

Each month one or two Rock County churches are also encouraged to collect items for the food shelf.

"Some churches do it all year around; some just during their month," Gehrke said. "We appreciate all the donations we can get."

Baustian and Gehrke said local physicians and many other groups donate food for holidays and other special occasions throughout the year.

For example, 4-H and other groups have created "birthday bags" that have all the supplies needed for a child's birthday party in a bag that parents can pick up in order to provide a birthday party for their child.

The Backpack Program, which provides take-home food for school-aged students, also distributes from the food shelf.

The organization partners with the local farmers market in a number of ways to provide more healthy options, and local gardeners share fresh fruits and vegetables with the food shelf as well.

Baustian said Sunshine Foods in Luverne donates excess food and other products. "Sunshine is very supportive," she said.

"We are also part of the food rescue program through Dollar General," Gehrke said. "At times they donate food from their store to use before it is no longer useful."

Overall, the co-directors of the Rock County Food Shelf say they're grateful for the support and are always ready to share information about the important program to others.

"If anyone or organization would like a tour of the food shelf and learn about how we operate, please contact Katie Baustian," the July 18 Facebook post stated.

"We appreciate your continued support of our mission."

Questions can be directed to Baustian or through the food shelf Facebook page.



Mavis Fodness photo/0729 Fair Monday 2023

4-H'ers bring projects, vendors set up for county fair

This year's Rock County Fair features 94 4-H'ers bringing general projects to exhibit at the fair. At Monday afternoon's entry day, the youth brought their projects to the 4-H exhibit building for judging and ribbon placings.

Youth in grades 6 and above are eligible to earn a trip to exhibit their projects at the Minnesota State Fair. The exhibit hall opens to the public at 1 p.m. Wednesday, July 26, when the state fair-qualified exhibits will be revealed.

Also on Wednesday, 70 4-H'ers will bring livestock to be housed at the fair through Saturday. The first of the 4-H livestock shows begins Wednesday night at 5 p.m. The pet show is conducted in the show arena.



Pictured above right, Peyton Blom, a member of the Denver Go-Getters 4-H Club, talks with judge Jennifer Oldenburg about the hat rack she made from horseshoes and barn wood. Blom explained she learned how to weld for the project and how the project will be used to hold and display her collection of cowboy hats.



Mavis Fodness photo/0729 Fair Monday 2023

Robert Dothager of Vandelia, Illinois, spreads wood shavings along the race course Monday afternoon for the pig races at the Rock County Fairgrounds. Dothager is one of the vendors setting up for the start of the 2023 county fair that begins on Wednesday, July 26, and goes through Saturday, July 29.

TREE & BRUSH REMOVAL NOTICE: WESTSIDE TOWNSHIP, NOBLES COUNTY

Notice is hereby given to all landowners or tenants to remove all trees, brush and thistles from your ditches **by August 15**. The township will take action to address these issues and will charge the landowner on their taxes for any costs incurred. Any questions can be addressed to the Township Board.

Karen Cook Westside Township Clerk

SAVE THE DATE

SALE LUVERNE
**FALL CITY-WIDE
GARAGE SALES
SEPTEMBER 14, 15, 16**



More can be recycled than your papers!

You can also recycle:

- + Metal
- + Plastic
- + Glass
- + Paper
- + Cardboard
- + Aluminum

Thank You!

Interested in Advertising?

Call Rick or Wyatt

283-2333

Anybody have a set of chaps we can borrow?

'Star Busters' team in training for July 28 Ag Olympics at the fair

Office chatter at the Star Herald has been entertaining this week.



ON SECOND THOUGHT

By Lori Sorenson, editor

"I'm definitely wearing a cowboy hat," I said.

"I think I can turn some jeans into Daisy Dukes," Greg chimed in.

"But wait — then you'll need chaps. Where can we get those?"

Mavis, a seasoned horse rider, volunteered to bring her wardrobe to work.

We discussed safety. "If the air quality is poor, I'll have my inhaler handy."

And we discussed ways to cheat ... "if we put Gracie in the wheelbarrow, we can just carry it."

If it isn't obvious, the Star Herald has a team in Friday night's Ag Olympics at the fair.

We'll be competing as the "Star Busters" among teams with names like "City Slickers," "Cagey Cardinals," "Rock Bottoms" and more.

It all starts at 7 p.m. Friday, July 28, in the grandstands at the fairgrounds in Luverne.

We'd like to train for the physical challenges, but we're not sure how.

For example, who has access to a 4-foot round bale or square straw bales for the "bale rolling and stacking" competition?

Other categories of Ag Olympics include "Move the Calf," "Backseat Driver," "Three-Man Wheelbarrow Race," and "Bucket Relays."

With three of our four team members over the age of 54, we're hoping for short distances and light bales.

At least one woman must compete in each of the challenges. (As farm girls, Mavis

and I are confident we'll be the stars of our Star Busters team).

But we're more than a little concerned that some of our opponents stacked their teams with 20-somethings.

We're just assuming that whatever we may lack in athletic prowess we'll make up for in style. Hopefully there's a ribbon for that.

Pucker up, buttercup!

Speaking of style, I'm personally excited about Friday's intermission when a lucky volunteer will pucker up to kiss a pig for charity.

Potential kissers are school principal Ryan Johnson, county administrator Kyle Oldre and city mayor Pat Baustian.

Whose lips would you like to see on a pig snout? The one ending up with the most money gets to pucker up. Look for donation boxes at the grandstand gates. (I heard the principal is already busy raising money for the other kissers.)

Money raised will go to Carson's Cause, a foundation for local brain health started in memory of my son, Carson Ehde, who died by suicide on Sept. 13, 2022.

Thanks, fair board members, for choosing Carson's Cause as this year's Kiss the Pig charity.

We really miss our Carson, but thanks to generous donors, we're making a difference and honoring his memory. Find us on the Luverne Area Community Foundation website, luvacf.org, and on Facebook.

Brain health is health.

Let's talk about it like we talk about health

GUEST EDITORIAL

By Angela Nolz, Licensed Professional Clinical Counselor and Sanford Integrated Health Therapist

Brain health is health. This concept lives in my mind, daily. I have worked as a mental health therapist for the past 15 years.

The more research emerges, the better we understand the inner workings of the brain, and yet, we have so very far to go to best understand illness and best recovery treatments.

Some things have changed in the 15 years that I've been involved in this field, but the need for mental health services and the need to destigmatize these illnesses remains.

Mental health professionals, including psychiatrists, psychologists, professional counselors, social workers and case managers, work from research and evidence-based modalities. We are bound by stringent ethical standards.

The work can be hard but is incredibly rewarding.

Each of us in this field understands brain health is health. Mental illness is not a flaw of character. It is not a choice. It is not a sin.

According to CDC, more than 31 percent of people in the United States will experience an anxiety disorder at some point in their lives. About one out of every six adults will have depression at some time in their life. Depression affects 16 million American adults every year. These illnesses do not discriminate, impacting youth and elderly, men

and women, poor and affluent and people of all races.

This work is vast. For me and for others who do this work locally, we have chosen to keep our focus here, in the southwest region of Minnesota.

We "Love the Life" and work to ensure that all people know how important their lives are, to not give up even when things feel hopeless. Hope is at the core of this work — always.

Luverne is currently part of a Minnesota Department of Health grant to engage in "Pathways to Care" that focuses on youth mental health and ensures no one falls through the cracks. We continue to offer classes like "Talk Saves Lives" and "More than Sad" to ensure we are having the difficult conversations that lead people to the help they need.

All local agencies are attempting to expand their workforce to improve population-to-services ratios. All local mental health pro-

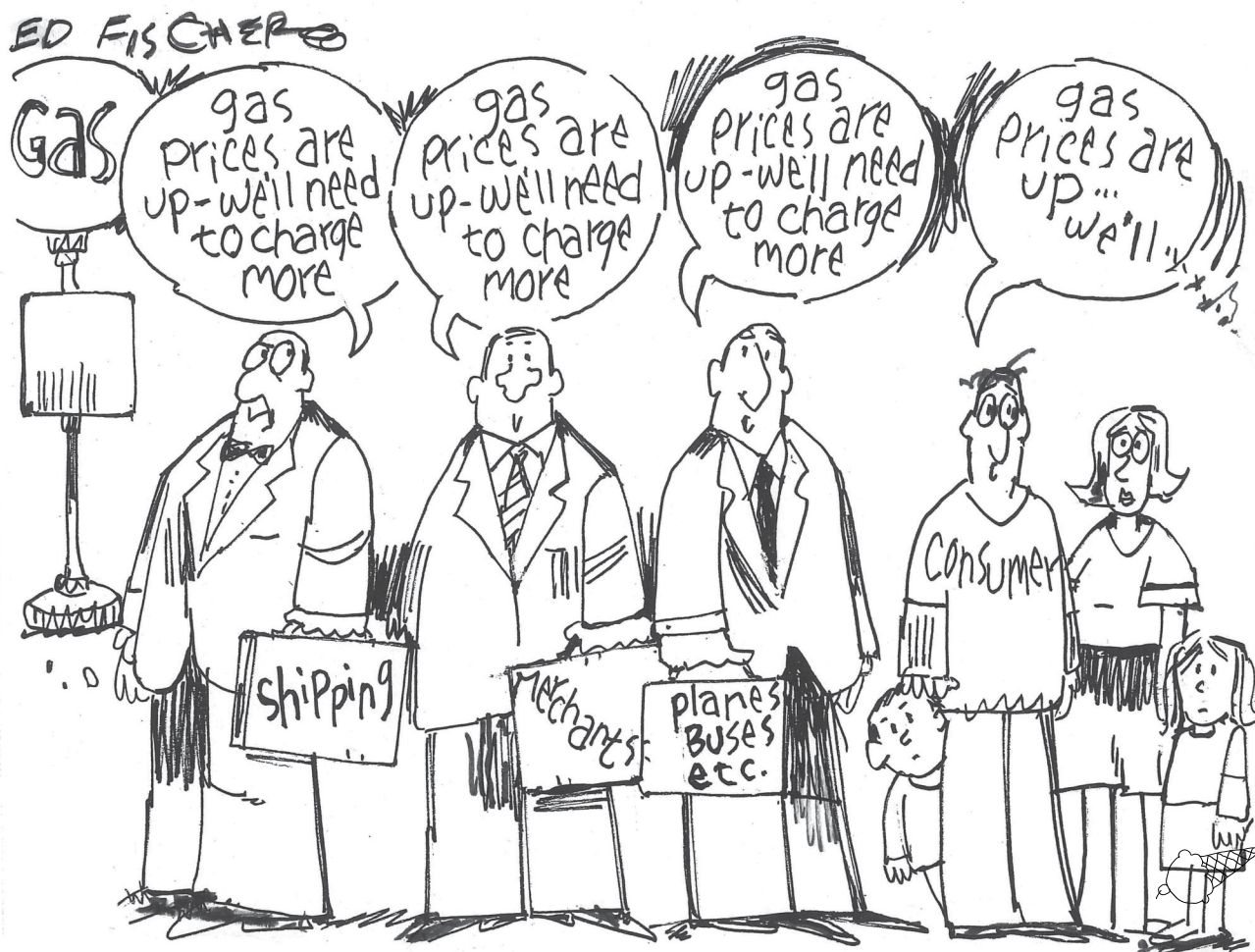
viders meet monthly as part of the Luv1LuvAll Brain Health group to explore gaps in services, upstream approaches and community engagement opportunities.

We will soon host our third annual "Out of the Darkness" suicide prevention walk from 9 to 11 a.m. Saturday, Sept. 16, at the Luverne City Park. These walks help us process grief as a community, provide hope and share a community goal of suicide prevention.

The walks are hosted by the American Foundation for Suicide Prevention all over the state of Minnesota and the nation. To register for the Sept. 16 walk in Luverne, go to AFSP.org/luverne.

I hope that people are talking about mental health. I pray they are seeking services when needed, without shame or stigma.

We will, as a mental health community, continue this work as long as it takes to ensure help is available and that we are talking about brain health as health.



More than 120 events, activities at the fair; make sure you attend one or more

If you don't know it's fair week, you must be living under a rock. The four-day event actually takes months of planning and preparation by the volunteers that make up the Rock County Agricultural Society.

The behind-the-scenes work is so good you don't even notice it. I mean that as a compliment.

You probably won't notice the freshly painted buildings, the new additional sidewalks and the upgrades to the commercial buildings. The reason you probably won't notice the improvements is because



FOR WHAT IT'S WORTH

By Rick Peterson, general manager

the fairgrounds are always very well maintained.

The slate of daily events is sure to appeal to a whole array of fairgoers. Personally for me, the one "must have" fair item is praline pecan

ice cream from the Rock County Dairy Association's ice cream booth.

Last year's big hit, Celebrity Dairyland Donkey Races, is back again this year. One of the many new attractions this year, sure to

be a hit and no doubt full of laughs, is the Ag Olympics.

There are over 120 different events and activities going on over the four days. Enjoy the fair, and here is a tip of the hat to the Rock County Agricultural Society for a job well done.

One last personal note ... The appointment was for 1:30 last Friday afternoon. We put it off as long as we could. The final hour still came too

soon.

For 14 years we hunted the rooster every fall.

Hazel quartered well, stayed close and pointed hard and steady.

It was the retrieve where she really excelled. Those are the memories I will recall.

It is not easy putting your four-legged hunting buddy to rest.

I'm sure this fall while searching for the rooster — this time without Hazel — I will stop and remember her as one of the best.

R.I.P. Hazel Fasan Yager.

E-mail: editor@star-herald.com Web site: star-herald.com
Phone: 507-283-2333 Fax: 507-283-2335

Published Thursdays by Tollefson Enterprises
POSTMASTER: Send address changes to
117 West Main, P.O. Box 837, Luverne, MN 56156.
Periodicals postage paid at Luverne,
Permit #33 and at additional mailing offices.

General manager: Rick Peterson
Sales: Wyatt VanSteenberg
Office manager: Deb Lusty
Office assistant: Jennifer Nelson
Production Manager: Heather Johnson
Production: Brooke Huisman

News staff:
Lori Sorenson, editor
Mavis Fodness, reporter
Esther Frakes, copy editor
Greg Hoogveen, sports editor

Rock County
STAR HERALD
Rock County's newspaper since 1873

(ISSN 0889-888X)

SUBSCRIPTION RATES
\$79 per year in Rock County; \$96 per year all other areas.
Single copies \$1.25

Entire contents copyrighted by
Tollefson Publishing Roger Tollefson, publisher

The *Star Herald* encourages letters to the editor expressing the opinions of readers and intends to print all letters. Letters not meeting the guidelines will not be printed. The *Star Herald* will verify the authenticity of all letters. Letters must have the name of the writer, a signature and address. Unsigned letters will not be considered. The *Star Herald* will edit for grammar, spelling and clarity. Any letters containing offensive language, libelous or slanderous material, or misleading or false information will be rewritten before being published. The *Star Herald* will not publish letters written with the sole intent to advertise or serve as a thank-you. Letters with more than 300 words may be edited. The deadline for letters is Monday 10 a.m. They may be delivered or mailed to the editor, *Rock County Star Herald*, P.O. Box 837, 117 W. Main St., Luverne, Minn. 56156.

ON THE RECORD

Dispatch report

July 14

•Complainant west-bound on Interstate 90, mile marker 10, Luverne, reported a pedestrian.

•A warrant was issued on Park Avenue, Kenneth.

•Complainant on S. Kniss Avenue reported a disorderly.

•A warrant was issued on E. Luverne Street.

•Complainant on E. Dodge Street reported an outage.

•Complainant on Mead Court reported a civil issue.

•Complainant east-bound on Interstate 90, exit 4, Beaver Creek, reported a driving complaint.

•A warrant was issued on W. 4th Street, Sioux Falls, South Dakota.

•Complainant northbound on Main Street and Kniss Avenue reported a lost child.

July 15

•Complainant on County Road 6, Hills, reported suspicious activity.

•Complainant east-bound on Interstate 90, mile marker 8, Beaver Creek, reported debris.

•Complainant on S. Walnut Avenue reported a disorderly.

July 16

•Complainant west-bound on Interstate 90, mile marker 12, Luverne, reported a driving complaint.

•Complainant west-bound on Interstate 90, exit 1, Beaver Creek,

reported a driving complaint.

•Complainant on E. Fletcher Street reported a narcotics law issue.

•Complainant on E. Dodge Street reported a fire.

July 17

•A warrant was issued on E. Fletcher Street.

•Complainant east-bound on Interstate 90, mile marker 10, Luverne, reported a road and drive law issue.

July 18

•Assistance from another department was requested.

•Complainant east-bound on Interstate 90, mile marker 1, Valley Springs, South Dakota, reported a road and drive law issue.

•Complainant on County Road 17 and County Road 4, Manley, reported a pedestrian.

July 19

•An outage was reported.

•Complainant on S. Kniss Avenue reported trespassing.

In addition, officers responded to 5 motor vehicle accidents, 1 deer accident, 1 vehicle in ditch, 4 transports, 7 ambulance runs, 8 paper services, 4 animal complaints, 1 fingerprint request, 4 burn permits, 1 alarm, 1 drug court test, 3 purchase and carry permits, 1 stalled vehicle, 26 traffic stops, 7 abandoned 911 calls, 3 welfare checks, 1 OFP and 2 follow-ups.

Blue Mounds State Park announces summer programs

The Blue Mounds State Park has announced its July programs and events. Contact bluemounds.statepark@state.mn.us or 507-283-6050 with questions or special requests.

Mammal Mania Nature Cart will be from 2 to 3 p.m. Thursday, July 27, at the Picnic Area. Bison may be the star of the show, but they are not the only mammal that make their home at the park. All ages welcome!

Magical Monarchs will be from 7 to 8 p.m. Friday, July 28, at the Amphitheater. The monarch has become a national icon for pollinators across America. From life cycles to a long migration, explore the world of pollinators through the lens of our state butterfly. Bring a chair as seating is limited.

Wetland Wonders will be from 3-4 p.m. Saturday, July 29, at the Picnic Area. Home to animals like great blue herons, painted turtles, and beavers, wetlands are more than just a swamp. Discover the wonders of wetlands through eyes of animals big and small and learn why we as humans need these wonderful places. This program is designed for ages 6-12 years old, but all ages are welcome.

Blue Mounds Birding will be from 7 to 8 p.m. Saturday, July 29, at the Picnic Area. Learn about popular bird species at the park and how to identify birds in the wild. We will hike a short half-mile hike to practice new skills. *Bring sun and insect protection as well as good walking shoes. Bring your binoculars if possible. All ages welcome.

DO YOU HAVE A US FLAG TO RETIRE?

If your US flag is ready to retire and you'd like to properly dispose of it, please place it in the

Flag
RETIREMENT BOX

located on the lower level of the **Rock County Courthouse** across from the **Veterans Service Office.**



ATS&R, made a rendering of the new elementary school in Beaver Creek. This view has the Rauk Service Station and current elementary school in the western background. This is a photograph of the graphic shared at Monday's meeting.

H-BC elementary school building plan update/continued from p. 1

K-2 and 3-5 with collaborative spaces outside the four classrooms in each area.

Between the grade level groups are the media center, maker space and support services classrooms.

"I like that the architects will integrate community elements into the building from the three communities," Bosch said.

While those elements are yet to be determined from the communities of Hills, Beaver Creek and Steen, the cornerstones and other masonry elements from the existing school will be incorporated into the new school.



"I like that the architects will integrate community elements into the building from the three communities."

— *Tim Bosch,*
H-BC School Board

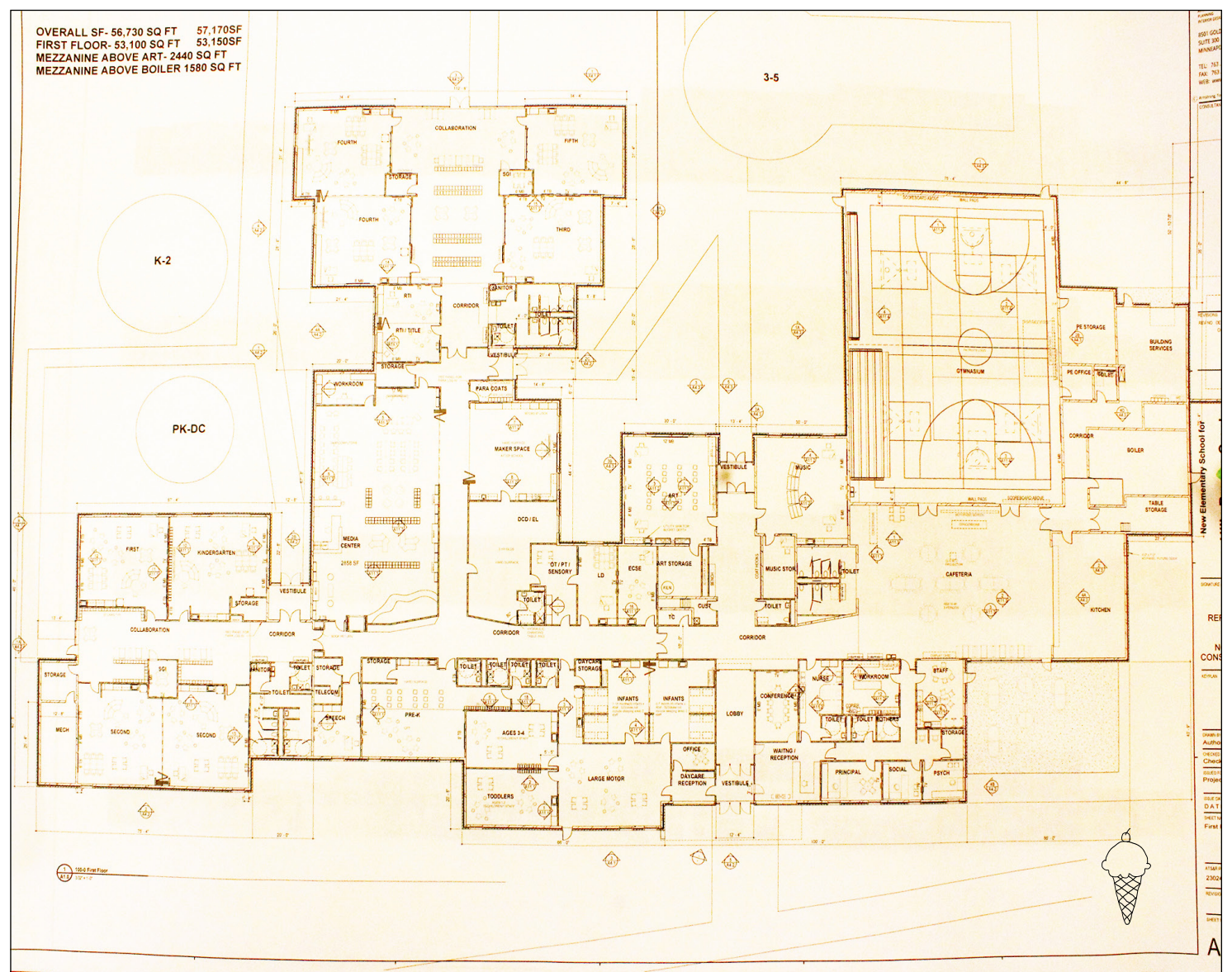
The committees will continue meeting to discuss renovations of the existing bus and vehicle garages at

the Hugo Goehle location in Hills to meet the district's needs.

"We have a dollar cap," Holthaus said. "Is it smart to tear down and build new? We are asking questions and making sure we have it figured out (before the garage projects begin next year)."

District voters approved \$3.475 million to demolish the former high school and improve the Hugo Goehle gymnasium, secondary school parking lot as well as the vehicle garages.

Board members did not make formal decisions at Monday's meeting.



During their Monday night meeting, Hills-Beaver Creek School Board members received their first look at the preliminary blueprints for the new elementary school to be built in Beaver Creek. This is a photograph of the plans.



Oil Change SPECIALS

VALID THROUGH AUGUST 31, 2023

Ford is offering PICK UP AND DELIVERY

\$39.99*

6 QUART OIL CHANGE

\$109.99*

13 QUART DIESEL OIL CHANGE

*EXCLUDING TAX & DISPOSAL

Herman

LIVERNE, MN

Since 1932

www.hermanmotorco.com
624 S. Kniss Ave Luverne, MN • 507-283-4427

HILLS-BEAVER CREEK SCHOOL DISTRICT

REQUEST FOR QUOTES

The Board of Education of Independent School District No.671, also known as Hills-Beaver Creek School District, will receive sealed firm quotes for delivery of up to 15,000 Gallons of Heating Fuel Oil at its Elementary Site in Beaver Creek 404 S 4th St (2,000-gallon tank capacity) and delivery of up to 25,000 Gallons of Liquid Propane delivered to two District Sites in Hills, MN—301 N Summit Ave and 205 E 2nd St.

Quote must indicate that delivery service company is able to furnish trained and certified LP gas service within 24 hours.

All quotes are to be sealed and mailed to Amanda Rozeboom, Business Manager at Hills-Beaver Creek School District, PO Box 547, 301 N. Summit, Hills, Minnesota 56138 and received on or before 3:00 P.M., Wednesday, August 9, 2023 at the District Office.

Quotes will be publicly opened after the submission deadline.

The Board reserves the right to accept or reject any or all quotes in whole or in part.

The Board also reserves the right to waive any formalities without cause and without explanation to any bidders

Hills-Beaver Creek District No. 671
Tamara Rauk, Clerk of the Board



Submitted photo

Grace Ingebretsen, a Blue Mounds State Park summer employee, demonstrates the capabilities of the new trackchair available for anyone with mobility issues to use on the hiking trails and in the camping areas of the park. Use of the trackchair is free with reservations at the park office and a park pass.

All-terrain trackchair arrives at Blue Mounds State Park

By Mavis Fodness

Blue Mounds State Park became the sixth location last week where an all-terrain trackchair is available for public use through the DNR.

The trackchair is battery-powered and can travel on trails that can't be accessed using a regular wheelchair.

According to Blue Mounds State Park manager Chris Ingebretsen, the trackchairs can maneuver on the majority of the park's trails.

"They won't be able to use it on the Burr Trail or on the 1- and 2-mile loop," he said.

The trackchair is limited to trails with inclines of 20-percent or less and is unable to be driven over thick mud areas.

A battery-operated trackchair can travel four- to seven-miles before recharging.

There is no charge for use of the chair, but visitors must have a state park permit.

Reservations for the trackchair are made through the state park's main entrance office.

Ingebretsen tried the trackchair himself last week.

Top speed is 3 mph.

"It's a nice leisurely ride," he said.

Ingebretsen had his own par-

"My mom is an avid hiker, but my dad can't do long distances. It's a great opportunity for them to do a long-distance hike together again."

— State park manager Chris Ingebretsen on the arrival of one of eight new trackchairs available in state parks across Minnesota

ents in mind when he filled out the application for a trackchair in the Blue Mounds.

"My mom is an avid hiker, but my dad can't do long distances," he said. "It's a great opportunity for them to do a long-distance hike together again."

The Minnesota Department of Natural Resources launched the trackchair program in 2022 with five chairs.

"These trackchairs represent the type of investment the DNR will make over the next several years, thanks to historic legislative funding for our Get Out MORE (Modernize Outdoor Recreation Experiences) Initiative, which aims to ensure Minnesotans of all abilities and interests enjoy world-class outdoor experiences," said DNR commissioner Sarah Strommen.

Action Manufacturing of Marshall was awarded the bid to provide the eight additional trackchairs to state parks, including the one at Blue Mounds.

Cost of the chair is currently \$15,800.

The amount is more than last year's \$14,500 per chair cost.

"We added a few more amenities," said Jamie McBride, a consultant for the state park and recreation program.

These include joy stick that can be operated from either side of the trackchair, a place to carry a backpack or bag, and extra pockets so users don't have to hold personal items in their laps.

The trackchair can be used year-round.

MENU AT GENERATIONS

Monday, July 31: Chicken-fried steak with gravy, mashed potatoes with gravy, carrots, dinner roll.

Half-Price Day sponsored by Grace Lutheran Church.

Tuesday, Aug. 1: Turkey noodle casserole, broccoli, cinnamon baked apple slices, dinner roll.

Wednesday, Aug. 2: Meatloaf, baked potato with sour cream, corn, bread, dessert.

Thursday, Aug. 3: Baked fish, rice pilaf, California Normandy vegetables, applesauce, dessert.

Half-Price Day sponsored by Minnwest Bank.

Friday, Aug. 4: Barbecue pork on a bun, coleslaw, pineapple.

LSS Dining offers well-balanced and affordable meals in a community atmosphere.

Call Pam Franken at 283-9846, extension 11 to reserve one day prior, to arrange to pick up a dinner or for home-delivered meals.

Gift certificates are available at the meal site or online at www.lssmn.org/nutrition.

1943: Carolene Anderson is one of Kenneth's pioneers

The following article is part of the Diamond Club Member group that began in the January 7, 1943, issue of the Rock County Star Herald. Members of this group consist of persons of age 75 and older.

The following appeared in The Rock County Herald on Nov. 18, 1943.

A resident in this part of Minnesota for over 60 years, Mrs. Carolene Anderson, Kenneth, can truly be classed as one of the pioneer women of this community.

Now living with her son-in-law and daughter, Mr. and Mrs. Henry Vande Velde in Kenneth, she is in good health, although her eyesight is failing. Her one big regret is that she can't work as much as she'd like to. "I do a little housework," she said, "but I wish I could work in the store where they need help, and it's so hard to get."

Mrs. Anderson was born at Konsmosogn, Norway, June 7, 1857, the daughter of Ole and Seerie Torkelsdatter Olson. Her father was killed in an accident when she was eight years old, and after his death, her grandfather operated their farm. She helped contribute to the upkeep of the home by herding and helping to care for cattle and sheep, as there were no sons in the family. She earned \$5 from spring until fall.

Her father met his death, she explained, when he was on his way home from town where he had



BITS BY BETTY

By Betty Mann, Rock County Historian

gone to buy rye, fish and leather for the family's supply of food and shoes. He was driving homeward with his team, one of which was a horse he had recently bought, when the tragedy occurred. In some manner, the strange horse shied away at a bridge, and the other horse followed him down a steep embankment. When her father was found some time later, he was dead.

Mrs. Anderson tells about how a traveling shoemaker came to their home every year and made their year's supply of shoes. And another thing about Norway at the time she lived there, she says, was that women did all the dairying. "As long as I was in Norway, I never saw a man milk a cow," she said.

Mrs. Anderson remained at home with her mother until she was 15 years old, and they began working for the neighbors

Bits, continued on page 7

REMEMBER WHEN

10 years ago (2013)

•More than 60 area children participated in the Missoula Children's Theatre performance of "The Secret Garden" Saturday. Drama students tried out for parts on Monday, practiced Monday through Saturday morning and presented a full-length musical Saturday afternoon. In 2013, Missoula Children's Theatre will work with 65,000 children in more than 1,200 communities in 50 states and 17 countries. Among cast members who received major parts were Makayla Bakken, Ashlee Boltjes, Jordan Winter, Naomi Vonkeman, Jonah Louwagie, Paul Witte, Hannah Ehlers, Megan Rogers, Aidan Bartels, Knute Oldre, and Anna Warntjes. ...

Josie Golla attended the Missoula Children's Theater makeup workshop last week and spent the rest of her day as a tiger. She is the daughter of Luverne's Nate and Molly Golla.

25 years ago (1998)

•The Manitou Hotel has stood on the southwest corner of Freeman and Main since 1901. Alex Frick purchased the hotel from Inga Bolte in 1987 and started his business, Manitou Carpets. He said the red brick building was built by the Luverne Hotel Corporation.

According to the Rock County Herald of 1900 and 1901, a group of civic-minded people joined together to raise money and build the hotel. They had about four locations to choose from, including the spot where the United Methodist Church is located, but 34 of 37 stockholders approved the purchase of the site across the street from the church from F.N. Laugharn, Col. Harrison White's implement business was located on the spot. The lot cost \$3,000.

Luverne architect W.E.E. Greene drew up the plans for the building and supervised its construction. It opened for business Nov. 29, 1901, before a formal banquet and dance for 151 ticketholders officially kicked things off on Dec. 11. The writers at the Rock County Herald pronounced, "Hotel Manitou is the pride of our town."

The first managing proprietors of the hotel were Grant and Martha Bronson, Owatonna.

50 years ago (1973)

•Joleen Davis, daughter of Mr. and Mrs. Dale Davis, Magnolia, has been selected to receive the Merit Achievement Award and to have her biography published in the seventh annual edition of "Who's Who Among American High School Students."

Joleen was selected for the honorary award on the basis of academic achievement and school activities.

In addition to having her biography published in the book, she will compete for one of ten \$1,000 scholarship awards funded by the publishers and will be invited to participate in the firm's annual, "Survey of High Achievers," later in the academic year.

Students from over 18,000 public, private and parochial high schools throughout the country are recognized for their leadership in academics, athletics, activities or community service in "Who's Who Among American High School Students."

75 years ago (1948)

•The Cozy Rest Motel has been completed by its owner, Kenneth Beelman, on South Kniss avenue, about a half block south of Main street. The new brick structure has five single

rooms and two double rooms, each complete with hot and cold showers and toilet facilities.

Mr. and Mrs. Beelman plan to operate the Cozy Rest Motel on a year-round basis. The cabins will have steam heat.

100 years ago (1923)

•Not much can be said of the baseball game between Luverne and Lismore Sunday afternoon, except that Luverne suffered its worst drubbing of the season, losing out by a 14 to 3 score.

Petersen, pitching for Luverne, was hit in the right hand by a batted ball in the first inning, which partially disabled him for the remainder of the game. The other men of the team also seemed to be all out of form, while the Lismore players were up on their toes all the time. Lismore brought in three runs in the first inning and then did not score again until the fifth. Luverne, getting in one run in each of the first three innings, tied the score at 3 to 3 at the end of the third inning. After that Luverne's teamwork gave away entirely, and Lismore scored heavily in each succeeding inning, with the exception of the eighth.

In the eighth and last innings, Petersen gave up the mound to Hettinger, and Finke was succeeded by Hammond. Petersen and Hettinger struck out eight, allowed two hits, and hit three batters. Dieters, pitching for Lismore, struck out eight, allowed five hits, and hit two batters.

A consultation held immediately after the game resulted in the disbanding of Luverne baseball team for the season. Out of the twelve games played this season the Luverne team won five and lost seven.

OBITUARY

Earl Madison

Earl Francis Madison, age 77, of Adrian, died Tuesday, July 18, 2023, at the Sanford USD Medical Center in Sioux Falls, South Dakota.



A time of fellowship was from 5-7 p.m. Friday, July 21, at St. Adrian Catholic Church in Adrian, with Parish Prayers at 5 p.m. A time of fellowship was also one hour prior to the service at the church on Saturday. A

Memorial Mass was at 11 a.m. Saturday at St. Adrian Catholic Church in Adrian, officiated by Monsignor Richard Colletti. Burial took place in the St. Adrian Cemetery.

In lieu of flowers, memorials are preferred to St. Adrian Catholic Church or St. Adrian Cemetery.

Dingmann Funeral Home & Cremation Services in Adrian is in charge of arrangements.

MEMORIAL SERVICE

Donald Matus

Donald Orville Matus, age 92, of Luverne, died peacefully November 29, 2022, in Urbandale, Iowa.

He was born February 13, 1930, in Pipestone County, Minnesota, to Frank and Amy Matus. He was raised and graduated from high school in Beaver Creek.

Don married LaVonne Stoterau on May 25, 1952, in Luverne. After their marriage, Don served two years in the U.S. Army, serving in the Korean War.

Don worked over 40 years as a self-employed insurance agent for life and health insurance. He was a member of Bethany Lutheran Church in Luverne.

Don enjoyed fishing and hunting and spending his

winters in Apache Junction, Arizona. Don spent the last few years of his life living close to family in Urbandale, Iowa.

Don is survived by sons Robert (Rhonda) of Urbandale, Iowa, and Thomas (Sharon) of Carlsbad, California; daughter Jennifer Lee of Edina, Minnesota; five grandchildren; seven great-grandchildren; and brother Chuck (Dottie) Matus.

He was preceded in death by his wife, LaVonne, his parents, and a brother, Dale.

A memorial service will be held at 1 p.m. Monday, July 31, at Bethany Lutheran Church in Luverne. The family will receive family and friends at noon.

DEATH NOTICE

Lois Kleine

Lois Arlene Kleine, age 89, of Luverne, died Saturday, July 22, 2023, at the Accura in Spirit Lake, Iowa.

A funeral will be at 10:30 a.m. Tuesday, August 1, at the Dingmann Funeral Home in Luverne. Visitation will be one hour prior to the service at the funeral home. Burial will be in the Maplewood Cemetery in Luverne.

Bits by Betty features Kenneth resident Carolene Anderson/continued from page 6

in the community when she had the chance. At the age of 18, she went to the town of Grimstad where she did housework in various homes. She was thus employed when her cousin, Gaar Aanenson, who had come to Luverne, wrote to her and told her to come to America. His description of the country and its opportunities appealed to her so she made arrangements to make the trip. Mr. Aanenson sent her enough money for her passage, as she was unable to save enough out of her own earnings.

She left Christiansand, Norway, July 16, 1881, going from there to Liverpool, England, and thence to the United States. She suffered so much from seasickness that the ship's doctor had engaged a place in a hospi-

tal in Boston for her where they planned to take her after they landed. She vowed, she said, that once her foot ever touched ground again, she would never travel in another ship as long as she lived. She recovered sufficiently after reaching shore to continue the remaining part of the journey, and on August 5 she arrived at the depot here.

As her train came in to Luverne, she anxiously looked around for someone she knew, but no one was there. "What shall I do now?" she thought as she stepped onto the platform. Nels Nelson, pioneer Luverne merchant, happened to be at the depot, and it was he who consoled her with the statement that her relatives would soon come to get her, which they eventually did.

She had a chance to go to a show the second night she was in Rock county, she recalls, but refused to do so on the grounds that she had no decent hat to wear. "I had a real pretty hat," she said, "I had used it for a pillow on the train, so it really wasn't the thing to be wearing to a show."

She attended school the following winter where her teacher was Dan Matthews, son of a Congregational minister. Through the school and through her five cousins who were about her age, she learned to speak English well enough to carry on a conversation. She then secured work in Luverne, and was employed at the Dr. Spaulding and the J.A. Harroun homes until her marriage. Her salary was \$2.00 per week.

Her marriage to Ole M. Anderson of Luverne took place at the Gaar Aanenson home, August 29, 1889, Rev. Thurmo performing the ceremony. They spent the first few years of their married life in Luverne, and Mrs. Anderson recalls that her husband on many occasions drove a team for Charles Lamb and Jack Perser, Englishmen, who had come to Rock county, and who were ardent wild game hunters.

One of the thrills she experienced some years later was seeing President Theodore Roosevelt who stopped here while making a tour on a special train.

They rented a farm six and one-half miles northeast of Luverne where they lived 20 years before moving into Nobles county, where they bought a farm,

and which was their home until they retired and moved to Kenneth in 1935. Mr. Anderson died there in 1940.

Mr. and Mrs. Anderson became the parents of six children, all of whom are living. They are John O. Anderson, Vienna township; Carl H. Anderson, Luverne; Mildred S. Anderson, Chicago; Lillian R. Anderson, Kenneth; Mrs. Henry Vande Velde, Kenneth, and Elmer M. Anderson, Hardwick. She also has 11 grandchildren.

Mrs. Anderson has no living brothers or sisters. She, herself, was a twin, but her twin sister died at

birth. Mrs. Anderson is a member of the Kenneth Lutheran church, but belongs to no other congregations. She attributes her long life to the will of God, stating that "each and every man has an allotted time to live, and that time will not be changed, regardless of how hard he has worked, or of anything else that he might have done."

Mrs. Anderson reads well enough yet to keep abreast of the days' happenings. She also can see well enough to do mending and other similar needlework for short periods of time.



Monday afternoon music

At right, the Brass Quartet of Tyler Hodge (left), Gavin Folkestad, William Johnson and James Jarvie entertained the public Monday night in one of dozens of free activities at the Plaza on Main in Luverne. The events, organized through the Luverne Area Chamber, have ranged from music performances to coloring to yoga. "We do have great things planned at the Plaza," said chamber director Jane Lanphere. "The Plaza is available for public use, too." Thirty lawn chairs were recently added to the Plaza along with four square folding tables for group events. "We really want to get it to be a place where people are comfortable using the area." Events are scheduled at the Plaza through August. Reservations for use of the space are through the chamber office, 507-283-4061.



Mavis Fodness photos/0729 Brass Quartet at Plaza

UPCOMING EVENTS AT THE PLAZA

Live music on the Plaza Ron and Jane Cote will provide live music at the Plaza on Main from 11 a.m. to 12:45 p.m. Thursday, July 27. Enjoy lunch from WildFlowers Lunch Trailer. Attendees are asked to bring a chair.

Seniors in motion Seniors in Motion is a free mobility and fitness class hosted by Luverne Aquatic & Fitness at the Plaza on Main from 10 to 11 a.m. Wednesday, Aug. 2.

Free root beer floats and historic downtown tours To celebrate National Root Beer Float Day, Take 16 Brewing and the Luverne Chamber will host golf cart tours of the historic Luverne downtown at 2 and 4 p.m. Sunday, Aug. 6, and serve root beer floats at the Plaza from 2 to 6 p.m. Call 507-283-4061 to reserve a seat.

Super Summer Books "Super Summer Books," a child reading outreach, is hosted by the Rock County Community Library at the Plaza on Main from 10 to 10:30 a.m. Tuesday, Aug. 15.

Yard Games & Fellowship Free fun activities will be available at the Plaza on Main from 11 a.m. to 1 p.m.

Thursday, Aug. 17, hosted by Rock County Opportunities. WildFlowers Food Truck will be available for lunch.

Music on the Plaza with Bruce Dysthe Bruce Dysthe will sing from 5:30 to 6:30 p.m. Thursday, Aug. 17, at the Plaza. Enjoy the great sounds of one of the area's finest vocalists. WildFlowers Food Truck will serve from 5 to 6:30 p.m.

Crazy Summer Fun for Kids This event is hosted by Luverne Chamber at the Plaza on Main from 10 a.m. to noon Friday, Aug. 18. Free lunch will be served for kids. Reservations are requested by Aug. 16. Call the Chamber at 507-283-4061.

Sip & Ride Golf Cart Coffee Tour This event is hosted by Luverne Chamber at the Plaza on Main. Rides depart at 8 and 10 a.m. Saturday, Aug. 19, for the Tales of the Graves golf cart tour. Reserve your seat by calling the Chamber at 507-283-4061.

Stick Fitness This is a free exercise class hosted by Luverne Aquatic & Fitness at the Plaza on Main from 10 to 11 a.m. Monday, Aug. 21.

COLLEGE NEWS

Anderson graduates from ASU

Jadyn Anderson, Luverne, graduated summa cum laude from Arizona State University, Tempe, on May 10 with a Bachelor of Science in Design (BSD) in architectural studies with minors in communications and sustainability. She also received the Moer Honor Award for a 4.0 GPA.

Anderson receives scholarship

The Boyd Midwest Family Private Foundation has awarded Jadyn Anderson, Luverne, a \$4,000 scholarship for the 2023-2024 school year. The scholarship is renewable for up to four years. Jadyn is pursuing a Master in Architecture from the University of Wisconsin in Milwaukee.

READ US ONLINE!
star-herald.com

NEW STUDENT REGISTRATION



LUVERNE PUBLIC SCHOOL ANNOUNCEMENT

Families that would like to register a new student for the 2023-2024 school year are encouraged to call Luverne Public Schools to set up an appointment.

The Luverne Elementary office phone number is 507-283-4497 option 4 and the Luverne Middle School/High School office phone number is 507-283-4491 option 5.

OPEN HOUSE AUGUST 30

Open House will be held August 30th
Elementary School 4 - 6 PM
Middle School and High School 4 - 7 PM

PALACE THEATRE		UPCOMING EVENTS
PALACE THEATRE	BANK NITE MOVIE:	
	TBD	Thursday, August 3 6:00 pm
	Sponsored by: First Farmers & Merchants Bank and Papik Motors	
	FREE ADMISSION	
MISSOULA CHILDREN'S THEATRE	THE PRINCESS AND THE PEAS	
	Friday, August 4	3:00 AND 5:30 pm
	Tickets: \$5	
B	Barbie	PG-13
	Saturday, August 5 Sunday, August 6	7:00 pm 7:00 pm
	Tickets: \$5 for kids age 3 - 12 th grade, \$7 for adults	
104 E. Main St. • Luverne, MN 56156 • 507.283.4339		
WWW.PALACETHEATRE.US		



In the past nine years, County K9s 4-H Club member Ashlyn Johnson has exhibited the grand champion or reserve champion pet at the Rock County Fair. Pictured (above, from left) are pets Bowie the pigeon (2022 winner), Biscuit the hamster (2020 during the virtual fair), Oreo 1 the hamster (2015), (below from left) Oreo 2 the hamster (2016), Missy the mouse (2017) and Kibbles the hamster (2014), the first pet Johnson exhibited at the Rock County Fair. Her grand-champion-ribbon streak is now at past six-straight years.

Ashlyn Johnson has history of winning 4-H ribbons with exotic pets/continued from page 1



bring a pet you can actually tell the judge about — something that the judge doesn't already know," she said.

Johnson spends at least a year researching an animal before she decides it will suit her as a pet.

Her more unusual pets have come in the last two years when she exhibited isopods (crustaceans) in 2021 and Bowie (a pigeon) in 2022.

Owning a pigeon is Johnson's ultimate pet goal.

"They're completely domesticated," she said.

"They are like dogs and cats basically. Any pigeons you see outside are just feral animals — they are not meant to live outdoors (but in covered coops)."

Johnson transported her



pigeon to last year's fair in a see-through backpack. Those who asked questions often received a quick lesson about pigeons.

"I walked past people and they would point and ask 'Is that a bird?' It was kind of fun," Johnson said.

This week's pet exhibit will be transported in a ter-

rarium, as "Time" is a milk snail.

"Pets is my favorite project," Johnson said. "It's the easiest, too. I don't prepare anything. I just bring them and I decide what to say when I get there — I think you should know everything about your pet before you get it."

Her knowledge and demonstrated excellence in the pet project earned Johnson an achievement medal in 2021, the highest honor a 4-H'er can receive in a 4-H project area.

Johnson takes her streak of six-straight grand champion ribbons into the 2023 pet show in the indoor show arena to lead off the 4-H livestock events beginning at 5 p.m. Wednesday, July 26.



DO YOU HAVE A GRAD GOING OFF TO COLLEGE?
Give them the gift of the Star Herald to keep them updated on all the latest Rock County news!

GET THE STAR HERALD ONLINE

12 months	\$46
24 Hour Access	99¢

PRINT EDITION ONLY

In County: 12 months	\$79
In County: 6 months	\$59
Out of County*: 12 months	\$96
Out of County*: 6 months	\$73

ONLINE + PRINT EDITION

In County: 12 months	\$93
Out of County*: 12 months	\$120

* Mailed as periodicals. Allow up to 2 weeks out of state.

There is no better way to keep your grad connected to their home town community.

WE HAVE DEADLINES

Our deadlines for the Announcer and Star Herald are as follows. We appreciate your cooperation in getting us any advertising or legals in a timely manner. Thank you!

DEADLINE

ANNOUNCER
DEADLINE FOR DISPLAY ADS AND CLASSIFIEDS
THURSDAYS AT 10:00 A.M.

STAR HERALD
DEADLINE FOR DISPLAY ADS, CLASSIFIEDS AND LEGALS
MONDAYS AT 10:00 A.M.

Don't miss out on your local sports updates!

Subscribe to view online!

Rock County STAR HERALD

Interested in Advertising?

CALL Rick or Wyatt to advertise in next week's paper.

Rock County STAR HERALD 283-2333

Help your loved one celebrate any occasion by posting an ad!

Call: **283-2333**

Birthdays
Bridal Showers
Anniversaries
Baby showers

LOCAL. DIGITAL. ADVERTISING.

170,000 monthly impressions!

Advertise YOUR business on 55" digital screens in 12 locations!

For more information contact:

Rick Peterson 507-290-0924 bluemounddigital@gmail.com	Wyatt VanSteenberg 507-220-1994 wyatt.bluemounddigital@gmail.com
--------------------------------------------------------------------	-------------------------------------------------------------------------------

Rock County STAR HERALD Luverne ANNOUNCER

Quiet title action

STATE OF MINNESOTA
COUNTY OF ROCK

IN DISTRICT COURT
FIFTH JUDICIAL DISTRICT
Case Type: Quiet Title Action
Court File: 67-CV-23-145

Allen Fick and Dennis Hanson and Bernice Hanson,
Plaintiffs,

vs.
Marlin Fick, Marilyn Doppenberg, and all heirs, known and unknown, of Florence E. Fick
a/k/a Florence Fick, and all other persons unknown claiming any right, title, estate,
interest or lien in the real estate described in the complaint herein,
Defendants

SUMMONS

THE STATE OF MINNESOTA TO THE ABOVE-NAMED DEFENDANTS.

You are hereby summoned and required to serve upon Plaintiffs' attorney an Answer to Complaint, which is filed in the office of the Court Administrator of the above-named county, within twenty (20) days after service of this Summons upon you, exclusive of the day of service. If you fail to do so, judgment by default will be taken against you for the relief demanded in the Complaint. This action involves, affects, or brings in question real property situated in the County of Rock, State of Minnesota, described as follows:

Parcel 1: The West Two (2) Rods in the Southwest Quarter of the Southeast Quarter (SW 1/4 of SE 1/4) in Section Twenty (20) in Township One Hundred Two (102) North of Range Forty-six (46) West of the 5th P.M., Rock County, Minnesota, except for that portion of said West Two (2) Rods contained within Parcel 2 described below.

Parcel 2: A tract of land in the West One-Half of the Southeast Quarter (W1/2 of SE 1/4) of Section Twenty (20), Township One Hundred Two (102) North, Range Forty-six (46), West of the 5th P.M., described as follows: commencing at the Southeast corner of said Southeast Quarter (SE 1/4), thence going in a Westerly direction on the South side of said Southeast Quarter (SE 1/4) 2,311.5 Feet to the point of beginning; thence going in a Northerly direction parallel to the East side of said Southeast Quarter (SE 1/4) 663 Feet; thence going in a Westerly direction parallel to the South side of said Southeast Quarter (SE 1/4) 328.5 Feet, more or less, to the West line of said Southeast Quarter (SE 1/4); thence going in a Southerly direction along the West line of the subject Southeast Quarter (SE 1/4) 663 Feet, more or less, to the Southwest corner of the subject Southeast Quarter; thence going in an Easterly direction along the South line of the subject Southeast Quarter (SE 1/4) 328.5 Feet, more or less, to the point of beginning, subject to easements, restrictions, and encumbrances, if any.

The object of this action is to remove, terminate and quiet any interest of the defendants to this action and to the real estate described above.

NOTICE IS FURTHER GIVEN THAT NO PERSONAL CLAIM is made against any of the Defendants. If any Defendant unreasonably defends the action, the Plaintiffs are requesting an order of the Court directing that said Defendant shall pay full costs to the Plaintiffs.

Civil cases are subject to Alternative Dispute Resolution processes as provided in Rule 114 of the General Rules of Practice for District Courts. Alternative Dispute Resolution includes mediation, arbitration, and other processes set forth in the rules. You may contact the Court Administrator for information about these processes and about resources available in your area.

The undersigned hereby acknowledges that sanctions may be awarded pursuant to Minnesota Statutes 549.211.

Dated: June 27, 2023

/s/ Paul A. Vis

Paul A. Vis, Attorney at Law
130 E. Main
Luverne, MN 56156
507-283-4828, FAX 507-283-9188
Attorney ID No. 297550

(07-13, 07-20, 07-27)

Mortgage foreclosure sale set for Aug. 31

NOTICE OF MORTGAGE FORECLOSURE SALE

NOTICE IS HEREBY GIVEN that default has occurred in the conditions of the following described mortgage:

DATE OF MORTGAGE: March 3, 2004
ORIGINAL PRINCIPAL AMOUNT OF MORTGAGE: \$42,800.00
MORTGAGOR(S): Steven K. Baumgard and Rosalia H. Baumgard, Husband and Wife

MORTGAGEE: First Premier Bank
DATE AND PLACE OF RECORDING:
Recorded: March 16, 2004, Rock County Recorder
Document Number: 158299
ASSIGNMENTS OF MORTGAGE:
And assigned to: Washington Mutual Bank, FA
Dated: March 3, 2004
Recorded: March 16, 2004, Rock County Recorder
Document Number: 158300
And assigned to: JPMorgan Chase Bank, National Association
Dated: December 23, 2021
Recorded: December 27, 2021, Rock County Recorder
Document Number: 201638
And assigned to: Community Loan Servicing, LLC
Dated: December 23, 2021
Recorded: December 27, 2021, Rock County Recorder
Document Number: 201639
And assigned to: Nationstar Mortgage LLC
Dated: June 28, 2022
Recorded: June 28, 2022, Rock County Recorder
Document Number: 202740
Transaction Agent: Not Applicable
Transaction Agent Mortgage Identification Number: Not Applicable
Lender/Broker/Mortgage Originator: First Premier Bank
Residential Mortgage Servicer: Nationstar Mortgage LLC
COUNTY IN WHICH PROPERTY IS LOCATED: Rock
Property Address: 109 S. Cottage Grove Ave, Luverne, MN 56156
Tax Parcel ID Number: 20-0855-000
LEGAL DESCRIPTION OF PROPERTY: The S 1/2 of Lot in Block 3 in Kniss Park Addition to the City of Luverne, Rock County, Minnesota
AMOUNT DUE AND CLAIMED TO BE DUE AS OF DATE OF NOTICE: \$31,275.57
THAT all pre-foreclosure requirements have been complied with; that no action or proceeding has been instituted at law or otherwise to recover the debt secured by said mortgage, or any part thereof; that this is registered property;
PURSUANT to the power of sale contained in said mortgage, the above-described property will be sold by the Sheriff of said county as follows:
DATE AND TIME OF SALE: August 31, 2023, at 10:00 A.M.
PLACE OF SALE: County Sheriff's office, in the lobby of the Rock County Law Enforcement Center, 1000 N. Blue Mound Avenue, Luverne, Minnesota
to pay the debt secured by said mortgage and taxes, if any, on said premises and the costs and disbursements, including attorney fees allowed by law, subject to redemption within six (6) months from the date of said sale by the mortgagor(s), their personal representatives or assigns.
If the Mortgage is not reinstated under Minn. Stat. §580.30 or the property is not redeemed under Minn. Stat. §580.23, the Mortgagor must vacate the property on or before 11:59 p.m. on February 29, 2024, or the next business day if February 29, 2024, falls on a Saturday, Sunday or legal holiday.
Mortgagor(s) released from financial obligation: NONE

THIS COMMUNICATION IS FROM A DEBT COLLECTOR ATTEMPTING TO COLLECT A DEBT. ANY INFORMATION OBTAINED WILL BE USED FOR THAT PURPOSE.

THE RIGHT TO VERIFICATION OF THE DEBT AND IDENTITY OF THE ORIGINAL CREDITOR WITHIN THE TIME PROVIDED BY LAW IS NOT AFFECTED BY THIS ACTION.

THE TIME ALLOWED BY LAW FOR REDEMPTION BY THE MORTGAGOR, THE MORTGAGOR'S PERSONAL REPRESENTATIVES OR ASSIGNS, MAY BE REDUCED TO FIVE WEEKS IF A JUDICIAL ORDER IS ENTERED UNDER MINNESOTA STATUTES, SECTION 582.032, DETERMINING, AMONG OTHER THINGS, THAT THE MORTGAGED PREMISES ARE IMPROVED WITH A RESIDENTIAL DWELLING OF LESS THAN FIVE UNITS, ARE NOT PROPERTY USED IN AGRICULTURAL PRODUCTION, AND ARE ABANDONED.

DATED: July 5, 2023
MORTGAGEE: Nationstar Mortgage LLC

Wilford, Geske & Cook, P.A.
Attorneys for Mortgagee
7616 Currell Boulevard, Suite 200
Woodbury, MN 55125
651-209-3300
File Number: 050335-F2

(07-13, 07-20, 07-27, 08-03, 08-10, 08-17)

Rock County passes title and summary of ordinance

Title & Summary of
An Ordinance Enacting a Code of Ordinances for the County of Rock, State of Minnesota, Revising, Amending, Restating, Codifying and Compiling Certain Existing General Ordinances of the County of Rock Dealing with Subjects Embraced in Such Code of Ordinances

1. **Title of Ordinance:** An Ordinance Enacting a Code of Ordinances for the County of Rock, State of Minnesota, Revising, Amending, Restating, Codifying and Compiling Certain Existing General Ordinances of the County of Rock Dealing with Subjects Embraced in Such Code of Ordinances

2. **Summary of Ordinance:** The Ordinance provides for the compilation, revision and codification of the ordinances of Rock County into one ordinance in book form under the following Titles:

Chapter

TITLE I: GENERAL PROVISIONS

10. Rules of Construction; General Penalty

TITLE III: ADMINISTRATION

30. Emergency Management
31. Employee Policies

TITLE V: PUBLIC WORKS

50. Solid Waste Management

TITLE VII: TRAFFIC CODE

[Reserved]

TITLE IX: GENERAL REGULATIONS

90. Right-of-Way Management

TITLE XI: BUSINESS REGULATIONS

110. General Business Licensing; Administration
111. Food and Beverage Establishments
112. Lodging Facilities
113. Tobacco Sales and Use
114. Youth Camps
115. Public Swimming Pools
116. Adult Entertainment
117. Transient Merchants
118. Hemp-Derived Products

TITLE XIII: GENERAL OFFENSES

130. Clandestine Drug Lab Sites

TITLE XV: LAND USAGE

150. Subsurface Sewage Treatment
151. Manufactured Homes Parks; Recreational Camping Areas
152. Riparian Buffers
153. Planning and Zoning

TABLE OF SPECIAL ORDINANCES

[Reserved]

PARALLEL REFERENCES

References to Minnesota Statutes
References to Ordinances

INDEX

3. **Availability of Ordinance:** A complete printed copy of this Ordinance is available for inspection by any person during regular business hours in the office of the County Administrator located at 204 East Brown, Luverne, Minnesota 56156. This Ordinance was passed by the Board of Commissioners of the County of Rock on the 11th day of July, 2023, and shall become effective seven (7) days after the date of publication or August 1, 2023, whichever is later

/s/ Sherri Thompson
Chair, Rock County Board of Commissioners

ATTEST:
/s/ Kyle J. Oldre
Rock County Administrator
(07-20, 07-27)

Public Notice City of Luverne, Minnesota

ANNUAL DISCLOSURE OF TAX INCREMENT DISTRICTS FOR THE YEAR ENDED DECEMBER 31, 2022
(Minnesota Statutes, Section 469.175 (5))

	Pamida DISTRICT 16	Minnwest Bank - State Farm DISTRICT 17	Luverne Family Hsg DISTRICT 18	Ford Dealership DISTRICT 21	Barck Street DISTRICT 22	Sharkee's - Mert's DISTRICT 23	Ramage Culligan DISTRICT 24
Current Net Tax Capacity	\$25,350	\$1,707	\$9,336	\$30,178	\$18,689	\$0	\$0
Original Net Tax Capacity	\$326	\$462	\$100	\$3,397	\$627	\$0	\$0
Captured Net Tax Capacity	\$25,024	\$1,245	\$9,236	\$26,781	\$18,062	\$0	\$0
Principal and Interest Payments Due in 2023	\$35,525	\$0	\$8,754	\$21,651	\$2,743	\$0	\$0
Tax Increment Received in 2022	\$26,353	\$1,311	\$9,727	\$23,521	\$13,449	\$0	-\$387
Tax increment Expended in 2022	\$26,353	\$1,370	\$9,671	\$22,652	\$2,581	\$532,149	\$1,000
Month / Year First Tax Increment Receipt	Jun-99	Jun-99	Jun-99	Jun-17	Jun-17	Jul-19	Jul-18
Date of Required Decertification	12/31/24	12/31/24	12/31/24	12/31/41	12/31/42	12/30/44	12/31/43

Additional information regarding each district may be obtained from:

Robyn Wessels
City of Luverne
305 E Luverne St.
Luverne, MN 56156
507-449-9900
rwessels@cityofluverne.org

(07-27)

FREE INTERNET
Qualify today for the Government Free Internet Program

YOU QUALIFY for Free Internet if you receive Housing Assistance, Medicaid, SNAP, WIC, Veterans Pension, Survivor Benefits, Lifeline and Tribal.

Bonus offer: 4G Android Tablet with one time co-pay of \$20

CALL TODAY (866) 433-5324

maxsip
ACP program details can be found at www.fcc.gov/affordable-connectivity-program-consumer-faq

844-605-7368

BOGO 40% OFF
ENDS 10/31

RENEWAL by ANDERSEN
FULL-SERVICE WINDOW & DOOR REPLACEMENT

Prepare for power outages today
WITH A HOME STANDBY GENERATOR

50 MONEY DOWN + LOW MONTHLY PAYMENT OPTIONS

Contact a Generac dealer for full terms and conditions

REQUEST A FREE QUOTE
CALL NOW BEFORE THE NEXT POWER OUTAGE
(855) 984-8982

FREE 7-Year Extended Warranty*
- A \$695 Value!

*To qualify, consumers must request a quote, purchase, install and activate the generator with a participating dealer. Call for a full list of terms and conditions.



**CITY OF LUVERNE, MINNESOTA
SUMMARY FINANCIAL REPORT**

The purpose of this report is to provide a summary of financial information concerning the City of Luverne to interested citizens. The complete financial statements may be examined at City Offices, 305 East Luverne Street, Luverne, MN, 56156. Questions about this report should be directed to Robyn Wessels at (507) 449-9908.

Summary Financial Report
Revenues and Expenditures for General Operations
Governmental Funds
For the Years Ended December 31, 2022 and 2021

	Total 2022	Total 2021	Percent Increase (Decrease)
Revenues			
Taxes	\$ 3,286,464	\$ 2,944,477	11.61 %
Special assessments	29	176	(83.52)
Licenses and permits	189,655	45,718	314.84
Intergovernmental	3,388,760	2,719,416	24.61
Charges for services	861,688	768,048	12.19
Fines and forfeits	11,003	9,252	18.93
Investment earnings (loss)	(193,193)	(27,666)	(598.30)
Miscellaneous	120,269	1,196,071	(89.94)
Total Revenues	\$ 7,664,675	\$ 7,655,492	0.12 %
Per Capita	\$ 1,553	\$ 1,548	0.30 %
Expenditures			
Current			
General government	\$ 1,078,828	\$ 892,315	20.90 %
Public safety	1,496,349	1,420,015	5.38
Public works	1,126,205	989,496	13.82
Culture and recreation	1,533,878	1,250,472	22.66
Conservation and development	952,762	2,004,546	(52.47)
Capital outlay			
General government	519,741	130,688	297.70
Public safety	125,105	81,695	53.14
Public works	1,372,329	1,918,794	(28.48)
Culture and recreation	1,568,336	5,160,456	(69.61)
Conservation and development	62,970	303,237	(79.23)
Debt service			
Principal	195,000	515,000	(62.14)
Interest and other costs	164,000	52,528	212.21
Bond issuance costs	-	95,223	(100.00)
Total Expenditures	\$ 10,195,503	\$ 14,814,465	(31.18) %
Per Capita	\$ 2,065	\$ 2,995	(31.05) %
Total Long-term Indebtedness	\$ 5,260,000	\$ 5,455,000	(3.57) %
Per Capita	1,065	1,103	(3.40)
General Fund Balance - December 31	\$ 2,854,279	\$ 3,247,957	(12.12) %
Per Capita	578	657	(11.96)

Statement of Net Position
Proprietary Funds
December 31, 2022

	Business-type Activities - Enterprise Funds					Governmental Activities - Internal Service Funds
	601 Water	602 Sewer	604 Electric	Other Proprietary Funds	Total	
Assets						
Current Assets						
Cash and temporary investments	\$ 2,563,138	\$ 752,315	\$ 4,749,362	\$ 1,403,633	\$ 9,468,448	\$ 1,413,488
Restricted assets						
Cash and temporary investments	224,382	937,536	506,158	6,215	1,674,291	-
Receivables (net of allowance for uncollectibles)						
Accrued interest	2,843	2,035	9,713	1,562	16,153	2,243
Delinquent taxes	741	927	-	-	1,668	-
Accounts, net	96,419	115,410	287,915	76,826	576,570	95
Loans	2,838	2,838	2,838	6,112	14,626	4,366
Current special assessments	6,516	8,564	-	-	15,080	-
Delinquent special assessments	1,171	1,225	-	1,650	4,046	-
Intergovernmental	43,339	59,213	-	156,716	259,268	-
Due from other funds	-	-	2,964,000	-	2,964,000	50,311
Inventories	53,473	53,473	699,286	265,147	1,071,379	-
Prepaid items	-	-	329	-	329	7,067
Total Current Assets	2,994,860	1,933,536	9,219,601	1,917,861	16,065,858	1,477,570
Noncurrent Assets						
Special assessments receivable						
Noncurrent	77,630	102,032	-	-	179,662	-
Loans receivable - noncurrent	13,906	13,906	566,180	29,951	623,943	21,393
Notes receivable - noncurrent	-	1,300,000	-	-	1,300,000	-
Capital assets						
Land	102,967	218,528	369,325	178,828	869,648	-
Construction in progress	138,161	617,329	8,450,344	-	9,205,834	-
Buildings	973,702	559,156	1,565,539	326,929	3,425,326	280,609
Improvements and infrastructure	13,809,434	27,384,551	21,888,608	3,140,832	66,223,425	722,901
Machinery and equipment	463,293	628,550	4,183,692	891,593	6,167,128	556,054
Total capital assets	15,487,557	29,408,114	36,457,508	4,538,182	85,891,361	1,559,564
Less accumulated depreciation	(7,769,736)	(7,486,334)	(15,734,282)	(2,103,103)	(33,093,455)	(771,879)

Total Capital Assets (Net Of Accumulated Depreciation)	<u>7,717,821</u>	<u>21,921,780</u>	<u>20,723,226</u>	<u>2,435,079</u>	<u>52,797,906</u>	<u>787,685</u>
Total Noncurrent Assets	<u>7,809,357</u>	<u>23,337,718</u>	<u>21,289,406</u>	<u>2,465,030</u>	<u>54,901,511</u>	<u>809,078</u>
Total Assets	<u>10,804,217</u>	<u>25,271,254</u>	<u>30,509,007</u>	<u>4,382,891</u>	<u>70,967,369</u>	<u>2,286,648</u>
Deferred Outflows of Resources						
Deferred pension resources	68,827	91,756	43,034	95,389	299,006	94,165
Deferred other postemployment benefits	663	813	418	513	2,407	688
Total Deferred Outflows of Resources	<u>69,490</u>	<u>92,569</u>	<u>43,452</u>	<u>95,902</u>	<u>301,413</u>	<u>94,853</u>
Liabilities						
Current Liabilities						
Accounts payable	\$ 48,706	\$ 32,468	\$ 543,176	\$ 49,999	\$ 674,349	\$ 10,773
Contracts payable	7,094	12,426	195,874	28,445	243,839	30,637
Retainage payable	658	27,195	279,242	2,637	309,732	-
Advances from other funds	-	-	-	38,336	38,336	-
Due to other funds	-	1,235,000	-	-	1,235,000	-
Due to other governments	3,932	-	26,829	24,700	55,461	-
Accrued interest payable	12,106	12,433	40,537	-	65,076	-
Wages and related benefits payable	11,914	6,473	8,198	11,265	37,850	11,039
Customer deposits payable	6,526	5,853	25,621	6,215	44,215	-
Compensated absences payable - current	25,268	13,798	13,299	16,127	68,492	117,313
Bonds payable - current	205,750	919,250	440,000	-	1,565,000	-
Total Current Liabilities	<u>321,954</u>	<u>2,264,896</u>	<u>1,572,776</u>	<u>177,724</u>	<u>4,337,350</u>	<u>169,762</u>
Noncurrent Liabilities						
Compensated absences payable - noncurrent	58,977	40,834	34,898	41,968	176,677	317,431
Bonds payable - noncurrent	2,133,319	8,037,631	15,357,938	-	25,528,888	-
Net pension liability	225,917	300,635	140,486	313,326	980,364	309,052
Other postemployment benefits liability	7,831	9,602	4,953	6,048	28,434	8,132
Total Noncurrent Liabilities	<u>2,426,044</u>	<u>8,388,702</u>	<u>15,538,275</u>	<u>361,342</u>	<u>26,714,363</u>	<u>634,615</u>
Total Liabilities	<u>2,747,998</u>	<u>10,653,598</u>	<u>17,111,051</u>	<u>539,066</u>	<u>31,051,713</u>	<u>804,377</u>
Deferred Inflows of Resources						
Deferred pension resources	<u>6,534</u>	<u>9,029</u>	<u>4,538</u>	<u>8,920</u>	<u>29,021</u>	<u>8,954</u>
Net Position						
Net investment in capital assets	5,371,000	12,925,278	5,969,071	2,406,634	26,671,983	787,685
Restricted for debt service	855,750	269,250	-	-	1,125,000	-
Unrestricted	<u>1,892,425</u>	<u>1,506,668</u>	<u>7,467,799</u>	<u>1,524,173</u>	<u>12,391,065</u>	<u>780,485</u>
Total Net Position	<u>\$ 8,119,175</u>	<u>\$ 14,701,196</u>	<u>\$ 13,436,870</u>	<u>\$ 3,930,807</u>	<u>40,188,048</u>	<u>\$ 1,568,170</u>

Adjustments to Reflect the Consolidation of Internal Service Fund Activities Related to Enterprise Funds

437,303

Net Position of Business-type Activities

\$ 40,625,351

Statement of Revenues, Expenses and Changes in Net Position
Proprietary Funds
For the Year Ended December 31, 2022

	Business-type Activities - Enterprise Funds					Governmental Activities - Internal Service Funds
	601 Water	602 Sewer	604 Electric	Other Proprietary Funds	Total	
Operating Revenues						
Charges for services/sales	\$ 2,150,649	\$ 2,128,260	\$ 7,523,818	\$ 2,857,695	\$ 14,660,422	\$ 898,470
Cost of sales	-	-	-	(1,390,434)	(1,390,434)	-
Service income	52,343	35,471	120,675	7,244	215,733	-
Other income	5,749	1,307	109,698	10,750	127,504	215,843
Total Operating Revenues	<u>2,208,741</u>	<u>2,165,038</u>	<u>7,754,191</u>	<u>1,485,255</u>	<u>13,613,225</u>	<u>1,114,313</u>
Operating Expenses						
Personal services	382,379	388,655	332,704	431,669	1,535,407	412,748
Supplies	163,442	171,115	307,055	111,323	752,935	56,289
Other services and charges	522,959	356,571	1,705,030	373,820	2,958,380	543,642
Power purchased/delivered	-	-	3,508,454	-	3,508,454	-
Depreciation	393,907	425,777	957,874	172,626	1,950,184	20,372
(Negative) pension expense	23,561	(402)	(30,112)	45,475	38,522	30,275
Total Operating Expenses	<u>1,486,248</u>	<u>1,341,716</u>	<u>6,781,005</u>	<u>1,134,913</u>	<u>10,743,882</u>	<u>1,063,326</u>
Operating Income (Loss)	<u>722,493</u>	<u>823,322</u>	<u>973,186</u>	<u>350,342</u>	<u>2,869,343</u>	<u>50,987</u>
Nonoperating Revenues (Expenses)						
Property taxes	741	906	-	-	1,647	-
Federal grants and aids	-	495,158	-	-	495,158	-
State grants and aids	-	-	21,419	-	21,419	-
Investment income (loss)	(139,764)	(100,008)	(479,624)	(75,334)	(794,730)	(108,139)
Gain (loss) on disposition of assets	-	-	38,845	-	38,845	-
Interest and other costs	(31,717)	(217,991)	(755,610)	-	(1,005,318)	-
Interest on customer deposits	(2)	(2)	(94)	-	(98)	-
Amortization revenue (expense)	4,732	7,776	24,203	-	36,711	-
Contributions to component unit	(40,000)	(65,000)	(70,000)	-	(175,000)	-
Total Nonoperating Revenues (Expenses)	<u>(206,010)</u>	<u>120,839</u>	<u>(1,220,861)</u>	<u>(75,334)</u>	<u>(1,381,366)</u>	<u>(108,139)</u>
Income (Loss) Before Capital Contributions and Transfers	<u>516,483</u>	<u>944,161</u>	<u>(247,675)</u>	<u>275,008</u>	<u>1,487,977</u>	<u>(57,152)</u>
Transfers In	-	-	-	-	-	700,000
Transfers Out	(250,000)	(290,000)	(1,171,413)	(390,000)	(2,101,413)	(200,000)
Special assessments	84,146	110,596	-	-	194,742	-
Capital Grants and Contributions	43,339	58,920	-	156,716	258,975	-
Change in Net Position	<u>393,968</u>	<u>823,677</u>	<u>(1,419,088)</u>	<u>41,724</u>	<u>(159,719)</u>	<u>442,848</u>
Net Position, January 1	<u>7,725,207</u>	<u>13,877,519</u>	<u>14,855,958</u>	<u>3,889,083</u>	<u>40,347,767</u>	<u>1,125,322</u>
Net Position, December 31	<u>\$ 8,119,175</u>	<u>\$ 14,701,196</u>	<u>\$ 13,436,870</u>	<u>\$ 3,930,807</u>	<u>\$ 40,188,048</u>	<u>\$ 1,568,170</u>

Changes in Net Position as Shown Above

\$ (159,719)

Adjustment to Reflect the Consolidation of Internal Service Fund Activities Related to Enterprise Funds

(76,466)

Changes in Net Position and Business-type Activities

\$ (236,185)

Statement of Cash Flows
Proprietary Funds
For the Year Ended December 31, 2022

	Business-type Activities - Enterprise Funds				Total	Governmental Activities - Internal Service Funds
	601 Water	602 Sewer	604 Electric	Other Proprietary Funds		
Cash Flows from Operating Activities						
Cash receipts from customers	\$ 2,232,220	\$ 2,167,554	\$ 7,674,924	\$ 2,854,838	\$ 14,929,536	\$ 875,636
Cash paid to suppliers	(707,020)	(502,533)	(5,761,931)	(1,911,295)	(8,882,779)	(630,195)
Cash paid to and on behalf of employees	(339,715)	(478,022)	(396,183)	(371,674)	(1,585,594)	(378,844)
Other receipts	4,765	-	109,088	9,384	123,237	214,497
Net Cash Provided (Used) by Operating Activities	1,190,250	1,186,999	1,625,898	581,253	4,584,400	81,094
Cash Flows from Noncapital Financing Activities						
Transfers to other funds	(250,000)	(290,000)	(1,171,413)	(390,000)	(2,101,413)	(200,000)
Transfers from other funds	-	-	-	-	-	700,000
Payment to component unit	(40,000)	(65,000)	(70,000)	-	(175,000)	-
Loan/note payments received	8,561	11,891	6,287	18,439	45,178	-
(Increase) decrease in due from other funds	-	-	(1,920,000)	-	(1,920,000)	1,604
Increase (decrease) in due to other funds	-	1,114,308	-	38,336	1,152,644	-
Federal aids received	-	247,579	-	-	247,579	-
State aids received	-	(58,457)	21,419	-	(37,038)	-
Property taxes received	-	279	-	-	279	-
Net Cash Provided (Used) by Noncapital Financing Activities	(281,439)	960,600	(3,133,707)	(333,225)	(2,787,771)	501,604
Cash Flows from Capital and Related Financing Activities						
Proceeds from bonds issued	-	-	11,843,316	-	11,843,316	-
Acquisition of capital assets	(277,880)	(866,395)	(10,542,698)	(461,252)	(12,148,225)	(623,861)
Capital grants received	-	58,920	-	-	58,920	-
Payment from developers	-	650,000	-	-	650,000	-
Proceeds from sale of capital assets	-	-	56,108	-	56,108	-
Principal paid on long-term borrowings	(285,750)	(929,250)	(490,000)	-	(1,705,000)	-
Interest and fiscal charges paid on long-term borrowings	(35,774)	(226,550)	(728,391)	-	(990,715)	-
Net Cash Provided (Used) by Capital and Related Financing Activities	(599,404)	(1,313,275)	138,335	(461,252)	(2,235,596)	(623,861)
Cash Flows from Investing Activities						
Loss on cash and investments	(140,476)	(100,668)	(481,539)	(75,197)	(797,880)	(108,829)
Net Increase (Decrease) in Cash and Cash Equivalents	168,931	733,656	(1,851,013)	(288,421)	(1,236,847)	(149,992)
Cash and Cash Equivalents, January 1	2,618,589	956,195	7,106,533	1,698,269	12,379,586	1,563,480
Cash and Cash Equivalents, December 31	\$ 2,787,520	\$ 1,689,851	\$ 5,255,520	\$ 1,409,848	\$ 11,142,739	\$ 1,413,488
Cash and Cash Equivalents are Comprised of						
Cash and temporary investments	\$ 2,563,138	\$ 752,315	\$ 4,749,362	\$ 1,403,633	\$ 9,468,448	\$ 1,413,488
Restricted assets						
Cash and temporary investments	224,382	937,536	506,158	6,215	1,674,291	-
Total Cash and Cash Equivalents	\$ 2,787,520	\$ 1,689,851	\$ 5,255,520	\$ 1,409,848	\$ 11,142,739	\$ 1,413,488
Reconciliation of Operating Income (Loss) to Net Cash Provided (Used) by Operating Activities						
Operating income (loss)	\$ 722,493	\$ 823,322	\$ 973,186	\$ 350,342	\$ 2,869,343	\$ 50,987
Adjustments to reconcile operating income (loss) to net cash provided (used) by operating activities						
Depreciation	393,907	425,777	957,874	172,626	1,950,184	20,372
Interest paid on customer deposits	(2)	(2)	(94)	-	(98)	-
(Increase) decrease in assets						
Accounts receivable	30,213	5,148	31,238	(8,259)	58,340	13,587
Special assessments receivable	(906)	(1,225)	-	(1,392)	(3,523)	-
Inventories	11,021	11,021	(309,960)	4,440	(283,478)	-
Prepaid items	-	-	(329)	-	(329)	6,969
(Increase) decrease in deferred outflows of resources						
Deferred pension resources	19,944	46,470	40,494	19,631	126,539	28,511
Deferred other postemployment benefit resources	(45)	83	123	(14)	147	4
Increase (decrease) in liabilities						
Accounts payable	(8,082)	13,732	36,264	2,359	44,273	(6,958)
Due to other governments	5	-	2,615	2,958	5,578	-
Wages and related benefits payable	3,908	(5,280)	(1,042)	779	(1,635)	1,110
Deposits payable	(79)	(100)	(807)	(450)	(1,436)	-
Compensated absences payable	15,227	(82,009)	(30,556)	14,014	(83,324)	(33,278)
Other postemployment benefits liability	13	(1,759)	(1,892)	(259)	(3,897)	(628)
Net pension liability	106,532	114,742	28,153	158,641	408,068	144,071
Increase (decrease) in deferred inflows of resources						
Deferred pension resources	(103,899)	(162,921)	(99,369)	(134,163)	(500,352)	(143,653)
Total Adjustments	467,757	363,677	652,712	230,911	1,715,057	30,107
Net Cash Provided (Used) by Operating Activities	\$ 1,190,250	\$ 1,186,999	\$ 1,625,898	\$ 581,253	\$ 4,584,400	\$ 81,094
Schedule of Noncash Investing, Capital and Financing Activities						
Book value of disposed/traded of capital assets	\$ -	\$ -	\$ 76,357	\$ -	\$ 76,357	\$ -
Capital assets acquired on account	\$ 7,751	\$ 39,621	\$ 475,116	\$ 31,082	\$ 553,570	\$ -
Special assessments levied	\$ 85,317	\$ 111,821	\$ -	\$ 1,392	\$ 198,530	\$ -
Amortization of bond (premium) discount	\$ (4,732)	\$ (7,777)	\$ (24,204)	\$ -	\$ (36,713)	\$ -

The notes to the financial statements are an integral part of these statements.

(7/27)



**INJURED AT WORK?
DISABILITY DENIED?**

**Contact Us Today
For Free Advice**


Workers' Compensation
Long-Term Disability
Social Security Disability

507-923-4169
www.GetFields.com

**FIELDS
LAW FIRM**

Read the Public Notices online

www.star-herald.com



mcan

Minnesota Classified Advertising Network

<p>EMPLOYMENT</p> <p>KMS PUBLIC SCHOOLS has FT paraprofessional position opening for 2023-2024. Apply at www.kms.k12.mn.us or send letter of interest, resume and three letters of recommendation to: KMS District Office, Box 168, Kerkhoven, MN 56252</p>	<p>MISCELLANEOUS</p> <p>FREE HIGH-SPEED INTERNET for those that qualify. Government program for recipients of select programs include Medicaid, SNAP, Housing Assistance, WIC, Veterans Pension, Survivor Benefits, Lifeline, Tribal. 15 GB internet service. Bonus offer: Android tablet FREE with one-time \$20 copy. Free shipping & handling. Call Maxsip Telecom today! 866/433-5324</p>	<p>MISCELLANEOUS</p> <p>SAFE STEP North America's #1 Walk-In Tub. Comprehensive lifetime warranty. Top-of-the-line installation and service. Now featuring our FREE shower package and \$1600 Off for a limited time! Call today! Financing available. Call Safe Step 833/966-3882</p>
<p>WANTED TO BUY</p> <p>WANTED: ALL 1970S MOTORCYCLES Running or not. Titled or not. Will pick up. Cash in exchange. Sell now before prices fall. Call Dan at 612/720-2142</p>	<p>DISH NETWORK: Only from Dish, 3-year TV price guarantee! 99% signal reliability, backed by guarantee. Includes Multi-Sport with NFL Redzone. Switch and get a FREE \$100 gift card. Call today! 855/562-4309</p>	<p>SAVE MONEY! Call your local newspaper or MNA 800-279-2979 to find out how you can save money by placing your advertisement here!</p>
<p>Classified Advertising that is Easy! The Minnesota Classified Ad Network Make an impact with your advertising dollar with classified advertising that reaches over 1 million readers!</p>	<p>DONATING YOUR VEHICLE? Get more! Free towing. Tax deductible. Plus, a \$200 restaurant voucher and a 2-night/3-day hotel stay at one of 50 locations. Call Heritage for the Blind to donate your vehicle today 844/220-9501</p>	<p>INFLATION IS AT 40 YEAR HIGHS Interest rates are way up. Credit Cards. Medical Bills. Car Loans. Do you have \$10k or more in debt? Call National Debt Relief & find out how to pay off your debt for significantly less than what you owe! Free quote: Call 844/205-5439</p>

Redbirds/from page 9

BOX Score
Inning 1 2 3 4 5 6 7
FINAL
 Tea 1 0 0 0 2 0 3
 RBirds 1 4 2 0 8 1 x 16

BATTING

Luverne	AB	R	H
S. Wenninger	4	1	1
Overgaard	0	1	0
Serie	5	2	3
Smith	4	1	2
Maurer	0	0	0
Paquette	2	1	0
Beyer	2	1	1
C. Wenninger	5	2	2
Lundgren	2	2	0
Sterrett	1	1	0
Beers	3	1	2
Haugen	3	1	2

Sehr 4 2 2 2
2B: Serie, Lundgren
3B: Serie, Smith, Beers
Total Bases: Serie 7, Smith 4, Beers 4, Lundgren 3, Haugen 2, C. Wenninger 2, Sehr 2, Beyer, S. Wenninger

PITCHING

Luverne	IP	H	R	ER
S.O.				
C. Wenninger	2	2	1	0
Haugen	2	0	0	0
Beyer	1	1	0	0
Serie	2	2	2	4

Pitches-Strikes: C. Wenninger 37-23, Haugen 24-14, Beyer 16-11, Serie 44-24
Batters Faced: C. Wenninger 8, Haugen 6, Beyer 4, Serie 9

Junior Legion state bound/from page 9

season for the team that showed consistent improvements. "We definitely had our moments this summer when we looked like a team that had no business going to the state tournament," Haugen said. "But they learned from those games, and it really turned around in the playoffs. We have 13 players, which isn't a ton, but those 13 guys are all in, and all of them contributed to us making state."

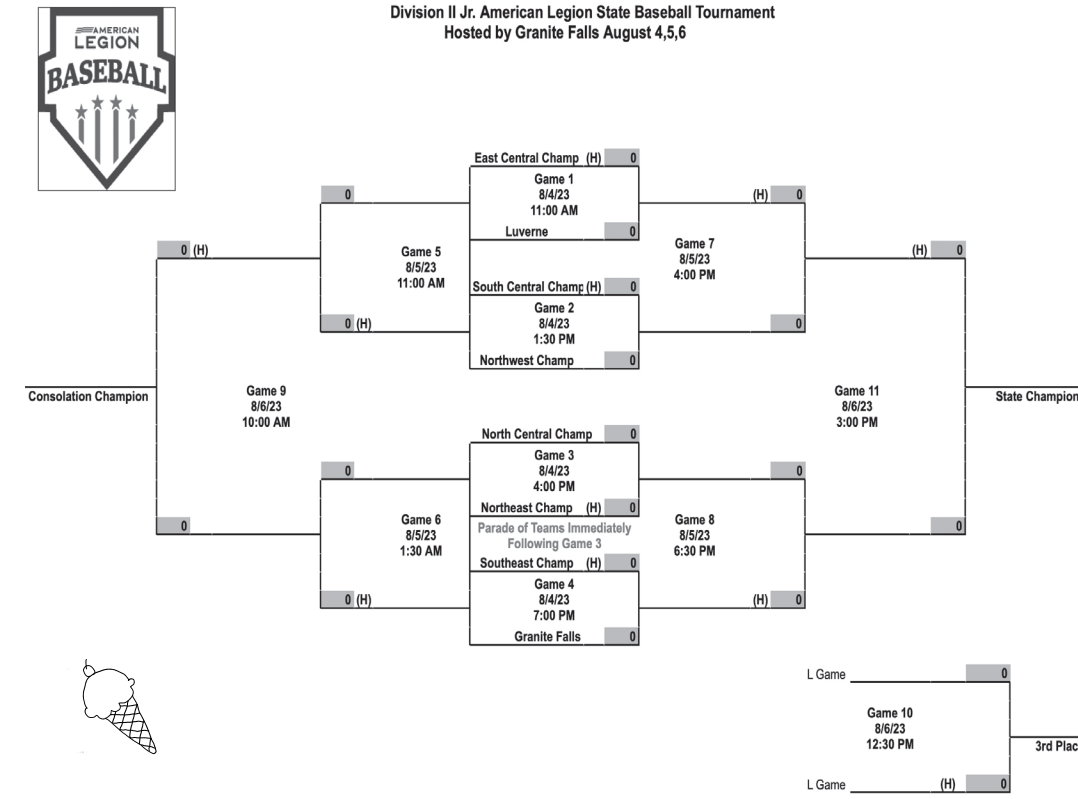


Luverne Jr. Legion players pile on each other after beating Sleepy Eye 6-5 for the Southeast Championship July 23.

Timeout from page 9

handle. Nothing can go wrong there ... I have seen round and square bales but never handled them. I have, however, pushed a car out of gas and had a paper route with bales of papers. Bucket races I have some knowledge of. Back in 2014 when Luverne got hammered with rain and flooding, I helped bale out a few basements and sump pump holes. All in all, I think I'm ready for Ag Olympics (as long I survive the Donkey Races unscathed). No matter how you look at it, these will be new and fun experiences to try in front of crowds of people.

Maybe I'll take home a ribbon. If nothing else, I'll have new stories to tell. Wish me luck, and cheer on the Star Herald team at these events. And if you are ever invited to try something different or new, give it a chance. The worst that could happen is you'll make a fool of yourself in front of a crowd. The best thing that could come of it is you've tried something new and uncomfortable and now have a story to tell and build on in the future.



Region 13C/from page 9

- 2023 Region 13C seeds**
1. Luverne Redbirds
 2. Fairmont Martins
 3. Milroy Irish
 4. Windom Pirates
 5. Hadley Buttermakers
 6. Jackson Bulls
 7. Lakefield Horned Frogs
 8. Heron Lake Lakers



2023 Region 13C Playoffs
Best of 3 Series
4 Series Winners Qualify for State

No. 1 Luverne Redbirds vs No. 8 Heron Lake Lakers
Game 1 July 26 at Redbird Field, Luverne 7:30 p.m.
Game 2 July 29 at Laker Field, Heron Lake 2 p.m.
Game 3 July 30 at Redbird Field, Luverne 2 p.m.

No. 4 Windom Pirates vs No. 5 Hadley Buttermakers
Game 1 July 26 at Island Park, Windom 7:30 p.m.
Game 2 July 29 at Laurie Mahon Field, Hadley 2 p.m.
Game 3 July 30 at Island Park, Windom 2 p.m.

No. 2 Fairmont Martins vs No. 7 Lakefield Horned Frogs
Game 1 July 26 at Herb Wolf Field, Fairmont 7:30 p.m.
Game 2 July 28 at Stan King Field, Lakefield 7:30 p.m.
Game 3 July 30 at Herb Wolf Field, Fairmont 2 p.m.

No. 3 Milroy Irish vs No. 6 Jackson Bulls
Game 1 July 26 at Irish Yard, Milroy 7:30 p.m.
Game 2 July 28 at Wacker Field, Jackson 7:30 p.m.
Game 3 July 30 at Irish Yard, Milroy 2 p.m.

Star Herald CLASSIFIEDS

GARAGE SALES

HUGE Connell Family Rummage—Everything needs to go and priced to sell! Halloween costumes, girls pretend play costumes, blue tarp, puzzles, cube shelves, hand saw, suitcases, air grease gun, cooler, tons of home decor, kitchen items (pots, pans, bread machine, Keurig, jars, toasters, storage containers & more), gnomes, bedding & blankets, lamps, steam cleaner, outdoor decor, tool box, kids games & books, Skill saw, heat gun, tool belt, tons of kids toys (Hot Wheels, bay blades, monster trucks, Barbies, doll house & accessories, baby highchair, crib & more), helmets, DVDs, Steve Hanks Angel prints, adult women clothing and shoes, boys and girls clothing and shoes. 1190 N. River Road, Luverne. July 26, 27, 28. Wed., 11 a.m.-5:30 p.m.; Thurs., 8 a.m.-5:30 p.m.; Fri., 8 a.m.-Noon. (7.22-7.27)

Garage Sale—708 Britz Drive, Luverne, MN. Wed., July 26-Sat., July 29: 12-7 p.m. Shop, lawn and garden, miscellaneous kitchen and household items, antique lanterns, small writing desk and other miscellaneous. (7.22-7.27)

RENTALS

Apartment for rent—Two-bedroom apartment with central air, on-site laundry and one-stall garage. No pets and no smoking. Located in quiet area. 55+ community. Call 507-920-0406. (7.8-7.27)

Now Leasing Under New Management!
Top Hat Apartments
 All electric Appliances included

- 305 E. Crawford St.
 1 bedroom 1 bath w/ garage
 furnished optional
 Approx. 1000 sq ft.
- 309 E. Crawford St.
 2 bedrooms 1 bath w/ garage
 Approx. 1400 sq ft.

Call 949-444-1744

EMPLOYMENT

Nobles County Community Services is accepting applications for registered nurses. If you have a passion for public health and serving the community this could be the career for you! Join our public health service unit and you'll be part of a skilled, caring, and knowledgeable professional team whose talents and contributions promote, strengthen and protect the health of individuals, families, and communities in Nobles County. Working in programs such as: Family Home Visiting for prenatal and post-partum women and newborns, Child and Teen Check Ups, and Public Health Preparedness. You can make a difference! **Registered Nurse:** performs professional nursing duties to ensure administration and coordination of established public health programs based upon the needs identified when working with individuals and families in the community. Weekends and holidays off! We offer flexible scheduling and telecommute options following an initial probationary period. Proficiency in a second language may be eligible for an extra \$1.00 per hour. Excellent Benefit package. **APPLY TO:** Nobles County Administration Office. Visit our website at www.co.nobles.mn.us for application and to view full job description and benefit sheet. **Deadline: Open until filled.** EEO/AA Employer (7.8-7.27)

Make the Wise Choice

RECYCLE THIS NEWSPAPER!

SERVICES

BEAN WALKERS
ROCKS, STICKS, ETC...
WE HAVE SEVERAL CREWS
 We also walk pastures with thistles and pick up sticks, tear down old fences and cover silage piles. **Any type of farm work. 29 YEARS EXPERIENCE REFERENCES AVAILABLE. FOR MORE INFO PLEASE CALL CELL 712-251-3277 HOME 712-943-2084 712-899-5219**

EMPLOYMENT

NOW HIRING Direct Support Professional

RCO is seeking exceptional and caring Direct Support Professionals to join our team! We currently have three shifts available:
 1. 5:45am-12:45pm Monday-Friday
 2. 7:45am-3:15pm Monday-Friday
 3. Substitute as needed (must work one shift every 90 days)
 No experience needed. Extensive in-person training provided. Candidates must be minimum of 18 years of age, have a valid driver's license and a good driving record, and must pass a background check with the Department of Human Services. Come be part of an organization that makes a difference in the lives of people with disabilities! Fill out the application on our website to apply: www.rockcountyoopp.org/employment-application Contact 507-283-4582 or info@rockcountyoopp.org with questions.

WE'RE HIRING

LPN & RN POSITIONS OPEN IMMEDIATELY

- Flexible Shifts
- Competitive pay (based on experience)
 - LPN's \$28-32 an hour
 - RN's \$36-40 an hour
- May be eligible for a \$4,000 sign on bonus (Cannot have been previously employed by NLTC within the last 12 months.)
- Health insurance offered
- PTO accrued each pay period
- Rewarding work environment

Apply online at:
www.newlifetreatment.com/careers
 Or contact Malinda at 507-777-4321 ext. 210

FOR SALE

For Sale—Small 5 horsepower snowblower. \$300 or best offer. Call 507-227-8817. (7.8-7.27)

MISCELLANEOUS

HAVE A UNIQUE SERVICE OR BUSINESS? Get the word out to over 1.4 million households. Call WIDE AREA CLASSIFIEDS today, 507-359-7326. (tc)

EMPLOYMENT

EMPLOYMENT

JJ's Tasty DRIVE-IN

HELP WANTED

FULL AND PART-TIME POSITIONS
 ON-THE-JOB TRAINING • COMPETITIVE PAY
 FUN ATMOSPHERE! • MUST BE 16 TO APPLY

STOP IN AND APPLY IN PERSON

As a leading provider of home and community-based specialized health care, we believe every person has the right to live well.

Come Join Us!
 Now hiring Caregivers in Luverne

- Full- and Part-time positions available starting at \$15.00 per hour
- Benefit Package for Full-time Positions
- Paid Time Off, Holiday Pay, Paid Training
- Pay On Demand

HSi Habilitative Services, Inc.
 For more information or to apply, visit: sevitahealth.com/join-us/careers

Join our amazing team

Blue Dragon Academy is looking to fill the following positions:

- + Infant Teacher
- + Toddler Teacher
- + Preschool Teacher
- + Floater
- + After School Aide

Applications can be found on www.bluedragonacademy.org or call 605-594-KIDS (5437) to set up an interview. **apply now!**

DEADLINE FOR CLASSIFIEDS IS MONDAY @ 10 a.m.

Kruger and Smith honored for race careers and accomplishments

By Greg Hoogeveen

This past week two local race car drivers were honored for their careers in the sport.

Jeremy Smith was inducted into the Murray County Speedway Hall of Fame on July 15.

Smith has been racing since he was 17 years old.

He started out in the sportsmen class and worked his way through hobby stock, B-Mod and eventually A-Mods where he has been racing for the past seven years.

Some of the races highlighting Smith's career are his first-ever hobby stock win at Huset's in 1996 and his back-to-back points championships in Worthington and Slayton.

"I appreciate all the people I have met along the way and all their help," he said, adding that he's not



Jeremy Smith's car #7J.

done racing yet.

"It's been harder to go racing with family and life events as you get older."

David Kruger, known as "Quicksilver," was honored posthumously with a Memorial Race at the Rock Rapids Speedway July 18.

Kruger began racing at the age of 36 and continued up to his full-time retirement in 2007.

He notched 40 career wins at Rapid Speedway, 27 wins at Huset's and 16 victories at Lake County Speedway in Madison.

He also won the Jackson National Championship in Jackson in 1990.

Kruger passed away Jan. 11 of this year, leaving behind a legacy of racing history.



Jeremy Smith was inducted into the Murray County Speedway Hall of Fame July 15. Pictured are (front, from left) Shelly Smith, Bard Smith, Clyde Smith, Jeremy Smith, Makenzie Smith, Sara Helling (in hat), Hannah Helling, Jacey Smith, (back) Matt Thier, Jarad Smith, Keith Petersen, Chad Smith, Adam Humphrey, Joe Voss and Trevor Ruesch.



David Kruger (at left) and his "Quicksilver" number 97 stockcar.

Weekly race results

Following are racing results for local drivers competing in Rock Rapids, Hartford, Slayton, Worthington and Brandon for the week of July 18-24.

Rapid Speedway

July 18 Rock Rapids, IA
Lyon County Fair
Late Model Street Stocks
7th #20K, Spencer Kalass, Luverne

July 21 Rock Rapids, IA
Fan Appreciation Night
Sportsman's
4th #24H, Brock Harnack, Hills
5th #17, Brandon Boeve, Beaver Creek

Hobby Stocks
2nd #22E, Eric Gaul, Luverne
6th #14K, Bryant Klaassen, Adrian
11th #10, Blake Schneekloth, Brandon

B-Modifieds
6th #52, Trevor Kracht, Luverne
Stock Car
1st #46, Colton Arends, Luverne
4th #20K, Spenser Kalass, Luverne
5th #40, Scott Overgaard, Luverne

10th #42, Chad Overgaard, Luverne
12th #4D, Cory Kelderman, Hills
15th #15, Thomas Kracht, Luverne
16th DNF-#69, Cadyn Wessels, Luverne
17th DNF-5X, Kevin Kremin, Kenneth

Murray County Speedway
July 21 Slayton, MN
Rained out

I-90 Speedway
July 22 Hartford, SD
No local drivers

Worthington Speedway
July 22 Hartford, SD
No races

Huset's Speedway
July 19 Brandon, SD
Silver Dollar Nationals
No local drivers

IMCA Stock Car
B Feature 1, top 4 transfer
12th #42, Chad Overgaard, Luverne
15th #69, Cadyn Wessels, Luverne
B Feature 2, top 4 transfer
5th #46, Colton Arends, Luverne

The Rock County Fair
ENDURO RACE
SATURDAY • JULY 29
GATES OPEN 6 PM
Rock County Fair Grandstands
\$750 to win both classes!
Tickets \$10
8 & under \$3
Pit gates open at 4 pm for inspection.
RACES START 7 PM SHARP
CALL GREG VANDE VELDE AT 507-920-5189 FOR MORE INFO AND TO SIGN UP YOUR CAR

WE HAVE DEADLINES

Our deadlines for the Announcer and Star Herald are as follows. We appreciate your cooperation in getting us any advertising or legals in a timely manner. Thank you!

ANNOUNCER DEADLINE FOR DISPLAY ADS AND CLASSIFIEDS THURSDAYS AT 10:00 A.M.

STAR HERALD DEADLINE FOR DISPLAY ADS, CLASSIFIEDS AND LEGALS MONDAYS AT 10:00 A.M.

TO PLACE AN AD, CALL
283-2333

MUSIC ON THE PATIO
BRUCE DYSTHE
ROCK COUNTY FAIR
SATURDAY, JULY 29
11:00 am - 1:00 pm
2:00 - 4:00 pm
PERFORMER CHANGE

24/7... Rain or shine ...
Your local, independent agent will be there.
Working for you - meeting your needs.
Buffalo Ridge INSURANCE
Auto-Owners INSURANCE
LIFE • HOME • CAR • BUSINESS
Cory Bloemendaal, CIC Steve Smedsrud, CIC Sadie Steen
South Hwy. 75, Luverne, MN | 507-283-2381

READ US ONLINE!
star-herald.com

ROCK COUNTY MINNESOTA
AUCTION
Hardwick, MN
160± Acres
Windmill Income!
CLOSES: THURSDAY, AUGUST 17 | 1PM CDT 2023

Auctioneer's Note: Steffes Group is honored to be able to present 160± acres of prime land in Denver Township, Rock County, MN. This parcel boasts a CPI of 95.1. There are three windmills that provide a revenue opportunity as well, while contributing to a sustainable and environmentally friendly operation. Whether you are a farmer looking to expand your farming operation or an investor seeking a valuable asset, this land offers immense potential. Don't miss out on the chance to acquire this prime land with the added advantage of wind energy!

From Hardwick, MN, head 3.6 miles west on County Hwy 7/1st Street, then 1.9 miles north on County Hwy 11. Land is located on the west side of the road.

The Korver Survivors Trust | Kevin Korver, Trustee
Ashley Huhn of Steffes Group, 320.693.9371 or 701.238.1975
Scott Steffes, MN14-51 | Ashley Huhn, MN47-002

320.693.9371 | SteffesGroup.com
Steffes Group, Inc., 23579 MN Hwy 22 South, Litchfield, MN
TERMS: 10% down upon signing purchase agreement, payable by cash or check. Balance due at closing within 30 days. This is a 5% buyer's premium auction.

Hidden in the Herald
We are hiding things in the Star Herald! Count the items, pictured below, and submit your guess before 10 am on Monday, July 31. All correct guesses will be entered in a drawing to win a \$25 Sunshine Foods gift certificate!

Congrats to last week's winner, Lana Henrichs!! There were 34 ribbons hidden!

This week you are looking for Ice Cream Cones!

The ice cream cones look like this! (Do not count this ice cream cone.)

FACEBOOK MESSENGER
EMAIL YOUR GUESS

Rock County STAR HERALD Sunshine Foods

Submit your guess via e-mail to sales@star-herald.com or message us on Facebook at RCStarHerald - please include your name, phone number and guess. You can also drop your guess off at the Star Herald office. Guesses must be submitted by 10 am on Monday, July 31.

Name _____ Phone Number _____ My Guess _____

Music on the Patio at the Rock County Fair

Thursday, July 27	Thursday, July 27	Friday, July 28	Friday, July 28	Friday, July 28	Saturday, July 29	Saturday, July 29
Classic Country with Gloria Jean	Goodroad Band	Mogen's Heroes	Shirley Harrison	Praire Home Rebellion	Bruce Dysthe	Back 40 Band
11:30 am - 1:30 pm 3:00 - 4:00 pm	6:00 - 9:00 pm	12:30 - 1:30 pm 3:00 - 5:00 pm	1:30 pm - 2:00 pm	6:00 - 9:00 pm	11:00 am - 1:00 pm 2:00 - 4:00 pm	5:00 - 8:00 pm