



Rock County STAR HERALD

Rock County's oldest business, printing since 1873

Thursday, March 23, 2023

H-BC purchases land for new elementary school

Sale contingent on results of April 11 referendum vote

By Mavis Fodness

The Hills-Beaver Creek School Board signed a purchase agreement to buy almost 15 acres as the site for a new elementary school in Beaver Creek.

Board members met in special session late Friday afternoon.

The agreement with Spring Brooke LLC is for 14.45 acres located in the Spring Brook Addition.

Purchase price is \$377,665.

The property is west of the Spring-Brooke Events, Golf & Grill along Golf Course Lane in Beaver Creek.

H-BC school board members met in a half dozen closed sessions focused on finding a location for the new elementary school.

Friday's agreement is a relief to the board.

"Having a location identified for the proposed new elementary school is a big step in the plans for the district and important information for voters," said board chairman Arlyn Gehrke. "The purchase agreement is contingent on a successful bond referendum vote scheduled for Tuesday, April 11.

Voters will be asked two questions:
•Question 1: Authorize the H-BC



Rendering courtesy of ATSR Architects

The Hills-Beaver Creek School Board agreed to purchase 14.45 acres from the Spring Brooke LLC, owners of the events center and future golf course on the east side of Beaver Creek. The sale is contingent on H-BC district residents' approval of a \$26.5 million bond referendum vote scheduled for Tuesday, April 11. The rendering features a pre-kindergarten through fifth-grade elementary school and future athletic facilities.

School District to build a new elementary school for grades pre-kindergarten through fifth grade for \$26.5 million.

•Question 2: Authorize the H-BC School District to make upgrades and an expanded

parking area at the Hugo Goehle gymnasium site, demolish the former high school on East Second in Hills, and construct a

H-BC school building/see page 5A

City hosts hearing for nutcracker proposal

By Lori Sorenson

More than 50 people attended a public hearing Monday night in Luverne City Hall where the Board of Appeals and Adjustments considered a variance request for a 73-foot-tall nutcracker on South Highway 75.

The meeting allowed for public comment, and several people spoke in favor of — and some in opposition to — what will be "The World's Largest Nutcracker."

It will be funded Just For Nuts Inc., a Luverne private nonprofit that has drawn more than \$200,000 in local donations and \$50,000 from the Blandin Foundation.

Structurally, the 65-foot-tall nutcracker will stand on an 8-foot-tall pedestal and will be supported by an existing 40-foot-tall solid steel post that once carried a "Mobil" sign for a service station.

The property is home to Those Blasted Things, opened more than

Nutcracker hearing/see page 3A

Future of mail ballot voting discussed at March 27 meeting

By Lori Sorenson

Rock County Commissioners will host an informational meeting Monday night with city and township clerks to discuss the possibility of returning to in-person voting in precincts that have been using mail ballots.

The meeting will be at 5:30 p.m. Monday, March 27, in the basement of the Rock County Library.

County election official Ashley Kurtz encourages at least one representative from each

city and township to attend the meeting.

It will address possible polling place options, election judge recruitment and machine costs.

"Any changes will obviously have a great impact on the townships and cities," Kurtz said.

She said potential changes in local election practices were prompted by "numerous challenges" presented by people who

Mail ballots/see page 2A

Wind energy production taxes bring in record amounts in 2022

By Mavis Fodness

Rock County will collect nearly \$1 million in wind energy production taxes in 2023.

The amount due is from the four wind farms currently operating in the county for taxes payable by April 1.

The total amount, \$936,102, is the most production tax collected in the county and is an increase over last year.

"It's a pretty substantial increase," said auditor-treasurer Ashley Kurtz at the Rock County

Commissioners' meeting March 14.

The county collected \$767,870 in 2021 from three wind farms in the county.

The fourth, Walleye Wind LLC, came online in late 2022 when 40 turbines were constructed in western Rock County. With a couple of months of operation, Walleye Wind generated \$35,548 in taxes in 2022.

Other wind farms, township locations, number of turbines, and the amount in tax generated

in 2022 include:

•Prairie Rose Wind LLC, Springwater, Rose Dell, Denver, 119, \$890,445.

•Rock County Wind Fuel LLC; Luverne, two, \$7,990.

•Community Renewables, Martin, four, \$1,620.

Of the total production tax, 20 percent is forwarded to the townships where the turbines are located, and the rest, 80 percent, is used by the county.

Wind energy/see page 2A

Winter storm causes local headaches (again)

By Lori Sorenson

Another winter storm plagued the region last week, closing roads and prompting cancelation of classes, events and other activities.

This system dropped only 3 to 4 inches of snow Thursday, March 16, but strong winds on its heels promptly blew roads closed and caused dozens of accidents and stranded motorists.

According to Luverne Fire Chief David Van Batavia, he and his crew utilized the four-door Ranger with snow tracks for several rescues Thursday.

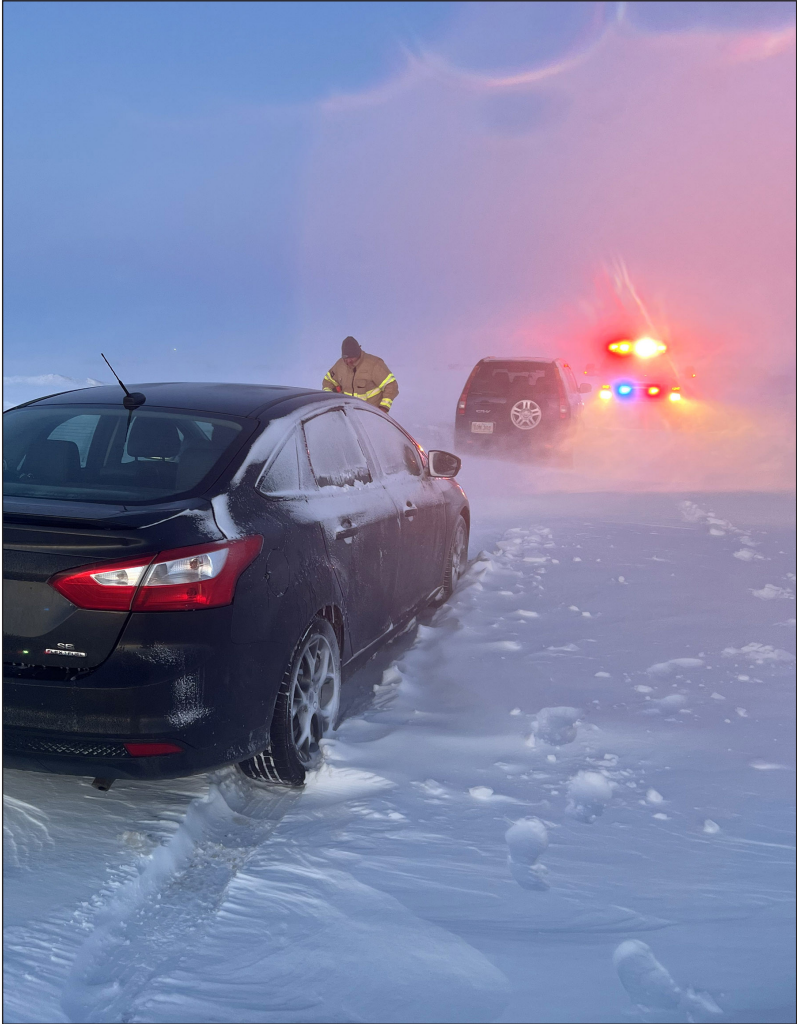
"It was a long night," he said.

Four people were rescued in the Ranger and three were picked up by truck, he said.

One was five miles west of Luverne on County Road 5, two were five miles west of Luverne on County Road 8.

A semi driver needed rescuing on I-90 after he broke down, and three people were stuck two miles south of Hills.

Many of the motorists who needed rescuing were traveling after the Minnesota Department of Transportation issued no travel



Luverne Fire Chief David Van Batavia shared this image of a winter storm rescue Thursday using the department's four-door Ranger that's equipped with tracks for snow travel.

Springwater Township elects new board member with 20 write-in ballots

By Lori Sorenson

The Springwater Township Board annual meeting and election attracted 21 voters and several nonresidents Tuesday night, March 14.

That's more than seven times the usual number at the annual meeting of an otherwise uneventful township in western Rock County.

At issue was snow removal — the difficulty in keeping roads cleared. And at the end of the night, the township board chair lost his re-election, and a 38-year snow removal contract will end this year.

Kurt Wenzel has been on the township board since 2009 and has served as chairman since 2016.

He was the only candidate on Tuesday's ballot, but 20 people wrote in Curt Sandbulte's name for the township seat. Only one person voted for Wenzel.

"I don't think we've ever had that many people show up for a township annual meeting," said Teresa Kramer, who has been Springwater Township's clerk

"It's been a frustrating winter for everyone. Probably more so for livestock farmers trying to get feed in and trucks in and out."

— Curt Sandbulte, newly elected township board member

since 2001.

She registered three new voters that evening (the roster of registered voters in the township is now at 142).

She said tensions ran high at the meeting. "I haven't seen anything like that before," Kramer said. "They weren't happy."

Township constituents voted to pursue a snow removal contract with Chad Versteeg Construction for next winter.

The record shows Mike Gangestad made the motion and Dalton Gath seconded with those

Springwater Township/8A



7 28028 20389 19

Opinion
Obituaries

Page 4A
Page 7A

Sports 1B
Public notices 3B

www.star-herald.com

Volume 148, Number 12

Luverne, MN 56156 USPS 468-040

How to reach us

507-283-2333 PO Box 837
editor@star-herald.com Luverne, MN 56156

COMMUNITY CALENDAR

Meetings

Blue Mound Cemetery Association will meet at 2 p.m. Tuesday, March 28, in the home of the Randy and Kathy Remme.

Pleasantview Cemetery Association will meet at 7 p.m. Monday, April 3, in the home of Brent and Jodi Taubert. Call 605-929-1593 with questions.

Parkinsons Support Group change of date – The group will now meet at 2 p.m. Thursday, April 6, at Poplar Creek in Luverne. All are welcome. Call 507-935-8173 with questions.

SAIL classes in Beaver Creek

SAIL classes meet in Beaver Creek Monday and Wednesday mornings now through May 24. The classes, Stay Active and Independent for Life, improve strength and balance. They meet from 9:30 to 10:30 a.m. in Beaver Creek City Hall in Beaver Creek. There is no cost to attend, but pre-registration is required by calling Linda Wenzel, 507-283-5064.

Child’s Remembrance Garden Wine Tasting, Dinner March 25

A Wine Tasting and Dinner for the Child’s Remembrance Garden will be at 6:30 p.m. Saturday, March 25, at Big Top Tents and Events, Luverne. A cash bar is available for those not drinking wine. Get tickets by March 22 at Blue Mound Liquor or 507-449-5052. See childsremembrancegarden.org or the group’s Facebook.

‘Amphibians and Reptiles’ at Blue Mounds March 25

Meet from 10 to 11 a.m. Saturday, March 25, in the Picnic Shelter at the Blue Mounds State Park for a program on “Amphibians and Reptiles.” Learn which amphibians and reptiles you can find in the park and explore the life cycle of these animals to discover how they give clues about the health of an ecosystem. Call 507-283-6050 for details.

Students perform ‘Barnyard Moosical’ and ‘Yee-Haw’

Luverne Elementary School students will perform two musicals on Friday, March 31, in the school performing arts center. First-graders will perform “A Barnyard Moosical” at 1:30 p.m. and second-graders will perform “Yee-Haw” at 2:15 p.m. Both programs will also be streamed online.

Mobile dental clinic March 30

The mobile dental clinic will be in Luverne Thursday, March 30, in the Rock County Health and Human Services community room. This clinic, organized by #LuvLuvAll’s Rock County Oral Health Task Force, provides dental care for adults and children ages 0 to over 100. Call 612-746-1530 to schedule an appointment. All forms of insurance are accepted.

Tree trimming and pruning help

Project Food Forest is offering to help with any and all tree trimming for trees less than 10 years old. The local organization will provide one-on-one guidance in the process, specifically tailored to individual trees. To schedule a service, email mickey@projectfoodforest.org or call 605-215-1051. The service is available through March 31, weather permitting.

Free tax preparation at library

AARP volunteers will offer free tax preparation for low-income individuals and seniors at the Rock County Library on Mondays starting Feb. 13 through April 15. Call 507-449-5040 for appointments. Bring documents, including last year’s tax return and a form of identification to document social security number. Tax returns for 2021 will be prepared if requested.

#TellUsTuesday Results

Scan Here to Vote for this Week’s Survey!



Are You Ready For March Madness?

Yes, I already have my bracket filled out	5%
Yes, I enjoy watching the games	38%
No, not really my thing	57%

Historic Spring Brook Bridge in Beaver Creek to be rehabilitated this year

By Lori Sorenson
Beaver Creek City Council members reviewed information at their March 8 meeting that puts wheels in motion to repair the historic bridge on Spring Brook Road on the northeast edge of town. The Rock County Highway Department is facilitating the effort, which started over five years ago with a grant application to repair the historic bridge.

The engineer estimated the project would cost \$208,393, but a Feb. 13 bid letting returned several bids significantly over that estimate.

The Rock County Board on March 7 accepted the low bid from Prahm Construction, Slayton, for \$367,873, and agreed to cover the additional cost of the project.

Funds will come from the Local Bridge Replacement Program through the Motor Vehicle Leased Sales Tax.

As part of the funding agreement, the City of Beaver Creek will pay \$10,000 for the project.

Construction will begin this fall, and the road will be closed for six weeks during that time.

Background

For several years the bridge been showing signs of wear — cracking, pitting and some erosion underneath.

However, the concrete structure is on the list of historic bridges with the Minnesota Department of Transportation, which means repairs are planned



Construction on the historic Spring Brook Bridge in Beaver Creek will begin this fall, and the road will be closed for six weeks during that time.

with an eye toward historic preservation.

A 2014 Historical Bridge Study of the Spring Brook Bridge found it to be “in fair condition overall,” but pointed out several deficiencies.

“The most significant defects include cracking and spalling of the wingwalls and headwalls, deterioration and undermining of the abutments, and erosion/exposure of the east bridge slopes,” the report stated.

In the spring of 2017, Beaver Creek received a \$40,000 engineering grant from the Minnesota Historical Society because the bridge was added to the National Register of Historic Places in 1989.

Spring Brook Road, which becomes First Avenue as it enters town, was at one time a primary

thoroughfare into Beaver Creek’s bustling downtown, which boasted several gas stations, a motel and other businesses.

Spring Brook Bridge was added to the National Register of Historical Places in 1989. Its builder, Perley Gillham, built dozens of bridges throughout various townships in southwest Minnesota.

Gillham was known for his unique concrete arch bridge designs.

According to MnDOT’s summary of the historical structure, the Spring Brook Bridge is a single-span, reinforced concrete, filled-spandrel, barrel-vaulted arch bridge, with slightly flared wingwall abutments.

It was constructed in 1911 by Perley N. Gillham, who designed and constructed reinforced-concrete arch bridges.

“Design and construction of reinforced concrete arch span exemplifies Gillham’s style and construction method, such as the scribed line in the arching edge, distinctive slab railing and decorative concrete molding along the lower edge of all coping,” the MnDOT site reads.

Rehabilitation won’t change Spring Brook Bridge’s current one-lane design.

When compared to today’s bridge standards, it would continue to be classified as “functionally obsolete,” a distinction it received in 1991.

Fewer than 100 vehicles travel the gravel road over the Spring Brook Bridge on a daily basis. The bridge continues to be safe.

Mail ballots/from page 1A

called into question the integrity of mail elections.

“I know that conducting elections by mail was the answer to solve the issue of election judge shortage and machine costs years ago,” Kurtz wrote in her letter.

“And for years we’ve done this process and there have been zero issues.”

However, during the 2022 elections, she said she and her staff were harassed and intimidated by some members of the public who questioned their practices.

“My staff was in tears about the way they were treated,” Kurtz told the County Board about the 2022 election. “We have to do something.”

While Kurtz didn’t detail specific conversations, she said callers frequently didn’t identify themselves and became belligerent when office staff explained the voting and canvassing processes.

They alleged that the mail ballot process is fraudulent with ballots mailed to deceased

residents or to people not registered in the county.

“That’s really not the case,” Kurtz said last fall. “We can explain our process from start to finish, but they still walk away.”

In continuing the conversation, she said she’s open to hearing from elected officials from other parts of the county.

“Rock County has always followed all statutes and procedures set forth by the Minnesota Secretary of State in regard to the handling of mail ballots,” Kurtz said in her March 13 letter.

“However, in 2022 our office fielded numerous complaints about such procedures.”

She said the County Board had election concerns brought to the county board meetings, but only one person (Pam Dooyema) was willing to voice a concern at a public meeting.

Kurtz said she hopes for a productive discussion among area elections officials at Monday’s meeting.

LHS competes in BPA contests

By Mavis Fodness
Ten Luverne High School students participated in 10 events at the state Secondary Business Professionals of America convention March 9-11 in Minneapolis.

The top three individuals or teams in each event move on to compete at the national BPA convention April 26-30 in Anaheim, California.

No LHS student qualified for the national contest.

Results are as follows:
•Podcast production team: Reese Louwagie, Mallory Von-Tersch, Jadya Hart, Averill Sehr, eighth.

•Entrepreneurship: Kylie Vander Lugt, 16th.

•Fundamental accounting: Anja Jarchow, 25th, Reese Louwagie, 34th.

•Administrative support concepts: Augusta Papik, 60th, Isabella Lanoue, 96th.

•Computer programming concepts: Connor Bose, 57th,

Kasey Buss, 58th.

•Digital communication and concept design: Isabella Lanoue, 49th.

•Digital marketing concepts: Isabella Lanoue, 105th, Augusta Papik, 116th.

•Financial math and analysis concepts: Kylie Vander Lugt, 84th.

•Medical terminology concepts: Augusta Papik, 92nd, Kylie Vander Lugt, 151st.

•Meeting and event planning concepts: Kylie Vander Lugt, 103rd.

LHS students qualified for the workplace skills assessment program at regional contests.

The WSAP prepares students to succeed, and it assesses real-world business skills and problem-solving abilities in finance, management, information technology and computer applications.

There are 72 BPA competitive events.

Wind energy taxes/from page 1A

The county’s portion is used to complete annual payments to two general obligation bonds issued in 2014 and 2015 for the county’s broadband and road improvement projects.

After the bond repayments, the rest of the tax money is used by the county highway department for equipment

purchases.

Townships split \$187,220 of the 2022 wind production tax. The township and the tax amount include:

- Beaver Creek, \$7,110
- Denver, \$95,779
- Luverne, \$1,598
- Martin, \$424
- Rose Dell, \$68,841
- Springwater, \$13,469

Dial-a-Specialist

Your One Stop Guide to Local Businesses



DR. MICHAEL SMITH

Most Insurance Accepted




ROCK COUNTY
CHIROPRACTIC

Laser Therapy • Custom Orthotics
Men, Women & Children's Health
Athletic Care • Massage Therapy
Work & Auto Injuries • Postural Restoration

WWW.ROCKCOUNTYCHIROPRACTIC.COM
283-2561 • 103 E. MAIN, LUVERNE

• Chiropractic




Viking Electric LLC

Tim Gangestad
Owner

(507) 290-2595

Conquering all of your electrical needs!
Residential • Commercial • Agricultural

• Electrician



Luverne MINNESOTA


Love the life!

PO Box 659, Luverne, MN 56156
507-449-2388 (24 hour voice mail)

www.cityofluverne.org

City Offices

• City



Codie Zeutenhorst, DC



LUVERNE HEALTH & WELLNESS

LuverneChiro.com

☒ Chiropractic ☒ Acupuncture ☒ Massage
☒ Auto, Work, and Sports Injuries

109 S Freeman Ave Luverne, MN

507.449.4400

• Chiropractic

World’s Largest Nutcracker public hearing/continued from page 1A

20 years ago by Vance and Becky Walgrave, who granted an easement to the nonprofit in order to build the giant nutcracker.

They and their daughter, Katie, are on the Just For Nuts board, which submitted the variance request to the city for the oversized structure last month.

The city’s ordinance allows for signs up to 96 square feet. The proposed sign is roughly 600 square feet, so the Walgraves applied for a variance in order to request an exception to the rule.

As part of the variance process, the city hosted a public hearing to share information and field comments.

The proposal

At the start of the hearing, Vance Walgrave explained the rationale for their giant nutcracker idea.

He said he and his family saw an opportunity to capture interstate traffic to build on tourism that the nutcracker collection is already attracting downtown.

“We have an opportunity to pick off a lot of these people with our nutcracker,” he said. “It’s a known fact that people don’t stop just once if they’ve had a good experience. They come back.”

His daughter, Katie, shared more information.

“The Rock County History Center has the third-largest nutcracker collection in the world, as well as local history,” she said. “We can see by the number of people visiting there, it’s working.”

She said their location at Those Blasted Things is the perfect place for the structure, because it’s private property where a large sign already used to be. (She pointed out that Mobil sign that once topped the post was slightly shorter but larger than the proposed nutcracker.)

“If we can get them off the interstate that’s already our biggest hurdle,” she said.

“For motorists traveling west on I-90, the nutcracker will loom on the horizon just as they pass Luverne’s nutcracker billboard.”

She also pointed out that the Just For Nuts nonprofit has a lifetime easement for the sign and the parking lot.

It also allows plenty of space for people to take pictures with the nutcracker.

The concrete base will be 8 feet tall with stairs going up to it so people can stand at the foot of the nutcracker with space to walk around and a railing for safety.

“The people that we’re working with, the fabricators, are Chicago Fiberglas Works and engineering firm Mobile Film Construction,” Katie Walgrave said.

“Both are used to making unusual projects, and that makes them ideal; they can think outside the box for our outside-the-box project. ... And they’re from Chicago so they’re used to wind and building things to withstand it.”

The nonprofit will set up a fund to support future maintenance, such as repainting every 10 to 15 years.



Lori Sorenson photo/0323 nutcracker hearing

Shawn Kinsinger shares testimony in favor of the World’s Largest Nutcracker coming to Luverne during a public hearing Monday night in Luverne City Hall for the variance application for the oversized structure on Highway 75.

Anticipated economic impact in Luverne

Katie pointed out that the Jolly Green Giant in Blue Earth County brings in 40,000 people since the community started promoting the statue for tourists.

Considering the already growing interest in the nutcracker collection downtown, she estimates Luverne could bring in 50,000 people per year.

“If only 5 percent of those 50,000 spend \$200 – getting gas, staying and getting something to eat, that’s \$500,000 per year for our local economy,” she said.

“That’s taxable dollars from people not in our community. Considering the multiplier effect, that’s \$3.5 million into our community. That’s a lot of money per year at no cost to anyone here.”

She said she’ll contact the Guinness World Book of Records when the nutcracker is built. “We’ll have the bragging rights to the world’s largest nutcracker. There are people out there seeking world record attractions.”

The nonprofit Just for Nuts will continue raising money and will support other future ventures in the community.

Katie quoted from the Blandin website: “Vibrant communities don’t arrive by accident, and they’re not going to last long in isolation. Resilient communities make their own future, both by taking responsibility for it and by building powerful networks of sustaining relationships. These actions catalyze a community’s ability to expand opportunities for all its residents.”

She said that’s exactly why Blandin gave them the grant.

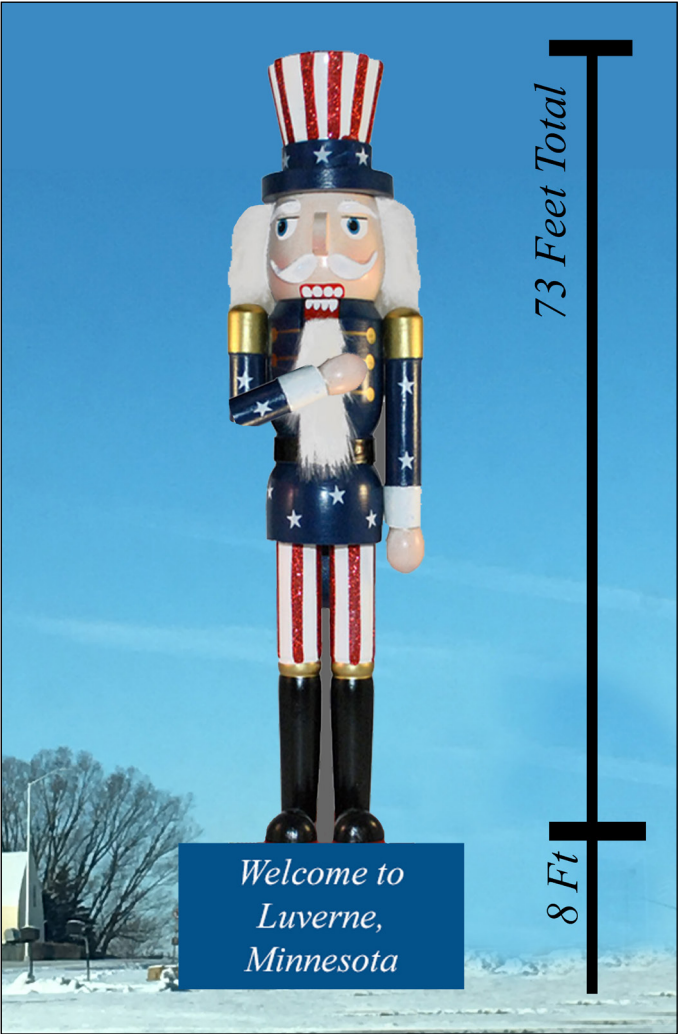
“They saw what we’re doing and saw it as a good idea to help the community,” she said.

“Getting people to come off the interstate is the biggest hurdle. This nutcracker will accomplish that.”

Public comments

Tammy Makram, who ran the Coffey Haus on Main Street for 10 years, was among the first to speak at the hearing.

“I truly believe the Coffey Haus would still be here if we’d had something to draw people off the interstate and bring them



The proposed statue is roughly 600 square feet.

downtown,” she said.

“We had events to bring people to town, but it wasn’t enough to bring people to town year-round.”

She said the Walgraves’ nutcracker will be good for everyone in town.

“When I had my coffee shop, people would come from the Blue Mounds State Park into town for a latte,” she said.

Shawn Kinsinger, Palace Theatre director, also spoke in favor of the nutcracker as a tourism draw.

He said he’s given more than 100 tours of the Palace to visiting groups, sometimes as many as 60 people, and they’re always interested in seeing other points of interest in town.

“It never fails that the nutcracker collection is on their list of places and things to see and do,” he said.

“The nutcracker collection absolutely does bring people into Luverne. I have watched tour groups come into the Palace, excited for a tour, carrying their newly purchased nutcracker souvenirs with them.”

Scott Wessels, who has been vocal about his opposition to the plan on his “Luverne Chatter” Facebook blog, also spoke Monday.

He expressed doubt

“To be honest, the Jolly Green Giant has a legacy ... the people of Blue Earth embraced the statue of the Jolly Green Giant because it was a large employer of the community. It was something they grew up loving. ... it had something to do with their community,” Wessels said.

“This is a more recent event that not everyone has embraced.”

Lori Hallstrom operates a gallery downtown and formerly had a retail store. She defended the Walgraves’ intent.

“One thing I do know is that when I was open, Those Blasted Things would send everybody to Main Street,” she said. “I see this as a great opportunity. It’s visible from the interstate. It gets people there, where they’ll tell them about downtown to see the nutcracker collection.”

Chamber Director Jane Lanphere shared a story about a phone call she received from a charter bus driver who is bringing three chartered buses, 165 people total, to Luverne this spring.

“They’re going to stay in Luverne and dine on their own at night. They’re probably each spending \$200. So that’s \$300,000,” she said.

“Why did they pick Luverne? Because the man who was planning the tour was trying to find something that would satisfy both the men and women. He said the nutcrackers and the military museum were the perfect combination.”

Lanphere also shared about a conversation she had recently with the Chamber director in Austin who wanted to know which contractors were going to build Luverne’s nutcracker.

“She said when Hormel decided privately to build a museum about canned meat, there were people in Austin who said that did not represent Austin, and they did not want to associate themselves with a stinky pork plant,” Lanphere said.

“Today that museum brings 100,000 traveler per year to Austin. Every retail and service business in that community has benefited. She said they are now planning to put statues of dancing pigs along the highway – 22-foot statues – to draw more people into the town. Hooks are what brings

more traffic into town.”

DJ Luethje worked for 18 years for Explore Minnesota Tourism at the rest area on I-90.

“People are always asking, ‘What’s there to see? What’s different here from other states?’ There’s the Jolly Green Giant, Spam Museum, the Shoe in Redwing, ... people want to stop and make memories,” she said.

“Let’s do this. I think it’s a great idea.”

Diana Hensley of the Cozy Rest Hotel said the local CVB board has for years tried to promote things in Luverne that make the town special.

“We have prairie and we have bison, but so many coming through our area on their way to the Black Hills are not necessarily impressed with our small herd,” she said.

“So many things that we’ve tried have not been unique enough to draw people in. This is an opportunity to draw people to Luverne for something unusual, and it will differentiate our community from all the other prairie towns along I-90.”

Several other citizens and businesspeople spoke at the meeting, and the Board of Appeals and Adjustments had also received nearly a dozen written statements.

Becky Walgrave informed the group that a mural at Those Blasted Things near the giant nutcracker will be completed to promote other areas of interest in the community. It will also have room to promote local businesses.

“If anyone’s concerned that we’re doing this for Those Blasted Things, we’re doing this because we’re proud of Luverne and we want to make it go,” she said.

“We’re hoping that people will also go downtown. That’s our goal. That’s why we started this.”

She shared a story about a mom, daughter and granddaughter from Columbus, Nebraska, who recently stopped in. They came specifically because they heard about the History Center’s nutcracker collection

“They stayed overnight. They searched for all the nutcrackers and took pictures with them. They did things downtown. When they heard about the large nutcracker, they said, ‘We will be back.’”

Board chair Caroline Thorson thanked attendees and especially those who spoke.

“That’s what this is for, and I appreciate your comments and the fact that you took time out of your night to come and learn and to share with us your thoughts and opinions.”

She said at the next meeting on April 3 the board will take action on the variance request. Meeting time is 5 p.m.



Get the most out of your lawn this spring.

Save now with

50% OFF

Your First Application

SCHEDULE YOUR APPOINTMENT TODAY! 1-888-709-3751

*Requires purchase of annual plan. Special price is for first Lawn application only. Requires purchase of annual plan, for new residential EasyPay or PrePay customers only. Valid at participating TruGreen locations. Availability of services may vary by geography. Not to be combined with or used in conjunction with any other offer or discount. Additional restrictions may apply. Consumer responsible for all sales tax. *Purchase of annual lawn plan required for TruGreen Lawn Assessment, which is performed at the first visit. *Guarantee applies to annual plan customers only. BBB accredited since 07/01/2012. ©2023 TruGreen Limited Partnership. All rights reserved. In Connecticut, B-0153, B-1380, B-0127, B-0200, B-0151.



Steve Fields
Minnesota Attorney

**INJURED AT WORK?
DISABILITY DENIED?**

**Contact Us Today
For Free Advice**

Workers’ Compensation
Long-Term Disability
Social Security Disability

507-923-4169
www.GetFields.com

Bridal Shower

for **ERICA MARSHALL**

bride-to-be of John Ferguson

Saturday, April 1 at 1:30 pm
St. John Lutheran Church Atrium
803 N. Cedar St., Luverne, MN

The couple is registered at
Williams Sonoma, Target & Bed, Bath & Beyond

REQUEST FOR GRAVEL BIDS

CLINTON TOWNSHIP

Gravel to be spread on Clinton Township roads.

Submit bids to
Lowell Bonnema
1161 21st St
Steen, MN 56173
507-855-2380
bids will be opened

Monday, April 3 2023

at 8 p.m. at the
Township Hall
Lowell Bonnema, Clerk

Tired of all the snow? Grab a book for a little escape

As the weekly blizzards keep bearing down on Rock County this winter, the library is providing me with some needed sunshine.



RUMINATIONS

By Mavis Fodness, Reporter

corn in Iowa, and walked on stage during a teenage Miss America pageant in New Jersey.

In the recently completed pageant story, the author epitomized a common book theme: People generally emerge wiser and stronger from their experiences.

“Life is like an arrow — sometimes you get pulled back only to be launched into something beautiful.”

From all our weather woes, we will also emerge stronger and wiser from our experience.

We will emerge from this winter less likely to be under drought conditions. Our lawns will be lush and our farmland recharged for the upcoming growing season.

The calendar will soon turn to April, and with it a more pleasant reality emerges. With the warm weather, snow is less likely a possibility.

We will soon return to more pleasurable outdoor activities that don’t involve moving snow.

When needed, however, the library will be right there.

For I’d rather read about the struggles of winter through a good book than experience the feeling myself.

Avoid excessive alcohol use during March Madness

GUEST OPINION

The NCAA tournament, known as March Madness, showcases some of the best basketball talent in the nation, but for every tip-off, students and fans are likely tipping back an excessive amount of alcohol.

It can be challenging at any time of the year to avoid excessive alcohol use. It can be particularly difficult for someone in recovery or the average person choosing sobriety for their health.

Fortunately, there are practical approaches that anyone can utilize to avoid excessive alcohol use during March Madness and maintain their sobriety.

However, if you know someone struggling with a drug or alcohol addiction, they must receive help. Addictions always worsen with time and no treatment.

“Binge drinking is most common among young adults ages 18 to 34, primarily among men,” said Marcel Gemme of addicted.org.

“We have found that adequate preventative information and awareness about the dangers of binge drinking has helped numerous people avoid the pitfalls.”

Avoiding binge drinking or relapsing takes work and awareness, and one can still enjoy March Madness.

Suppose someone is in recovery from addiction or choosing so-

briety. In that case, begin by identifying relapse triggers, such as places, people, groups, events or environments. Avoid these and set clear boundaries and limitations.

Manage any negative emotions with healthy outlets such as exercise or hobbies. Attend the game or post-game celebrations with other sober like-minded people. Bring non-alcoholic drinks. Practice saying no when offered alcohol.

Finally, have an exit plan if things become too much to manage, and lean on support such as family, peers, friends or group meetings.

In contrast, suppose someone is a casual drinker of legal age. Stick to one or two alcoholic beverages during the game.

Drink lots of water and have a full meal to avoid drinking on an empty stomach. Avoid drinking games and any environments promoting excessive alcohol use. Do not drink and drive, even if you do not feel intoxicated.

Binge drinking is a method of consuming alcohol that rapidly increases blood alcohol concen-

tration to or above .08 percent. Among men, this may take five or more drinks within two hours, and for women four or more drinks in two hours.

There are significant dangers associated with this type of drinking. The unfortunate consequences negatively affect college students, their families, and college campuses.

While poor academic performance is obvious, the more severe consequences include alcohol poisoning, suicide attempts, health problems, personal injury, DUIs, unsafe sexual behavior, violence, sexual assault, assault and even death.

All of this is avoidable with awareness and prevention.

March Madness offers some of the best basketball in the nation, but festivities should never cost someone their health or future.

Make good choices, stay aware, and be responsible.

Nickolaus Hayes is a health care professional in the field of substance abuse and addiction recovery with a focus on education.

Brooks: ‘What’s your better idea?’

To the Editor:

If you try to make everyone happy, you will lose as a community. You’re a town of 5,000 people, with perhaps 2,000 or so homes. Are a thousand of them, or even a 500, complaining?

What happens is CAVE-rs (Citizens Against Virtually Everything) complain and it might be as many

as 50 people (typically it’s more like ten) and then you fold as a community.

The good people don’t want to get involved in the fight and negativity, so they say nothing and the naysayers simply have their way.

Ask them this: “What else can we hang our hat on besides the mundane ‘quality of life,’ ‘Mayberry,’

‘friendly people,’ ‘historic downtown,’ and the list of generic things every community, everywhere already use? And what do we have that we can leverage without spending an arm and a leg to get there?

Even if you go the nutcracker route for just a few years, it will at

Brooks, continued on page 5A

Becker: ‘People are busy and want to see things’

To the Editor:

Marketing is about quirky ideas! I am writing this letter to the editor to share some things to ponder. After years of being in marketing, I have attended many trainings, read more books than I want to share as well as listened to leaders in this field. I am sharing this with you:

To best market an idea or concept, you always need a “hook” to grab people’s attention. It needs to be quirky and unique because people are tired of the same look, same view. This is why many are changing newsletters from all writing to pictures and graphics because people are busy and want to see things and not spend time reading long stories. Readers have commented on seeing results and successes instead of having to read them.

Some ideas may not generate money for a cause, but instead generate donations, which saves the entity money. A recent event was done with giving food, and the outcome resulted in over \$8,000 in food.

In marketing, we know we will never make everyone happy, so this is when we can welcome these individuals to be part of the planning and to give input

VOICE OF OUR READERS

because it is important to listen, but you cannot please everyone all the time.

If someone does not like a concept, then sit down and let’s talk about ways to improve the concept instead of tearing down someone’s work. Ideas are formulated when great minds come together for a greater cause – in this case the love of our community.

Assomeone who also loves Luverne, even though I live in Sioux Falls, I support my hometown through the Legacy Foundation Project and work directly with businesses in Luverne for the non-profit I lead.

Here are some things others may not see:

1) I see a lot of young people in Luverne when I come to visit and of course do not know them because of how long I have been away from Luverne.

2) I also see Luverne as a great community for people to retire in because it is small, safe, and there are good people with strong programming.

3) Additional mental health services/programming needs to be started by a strong non-profit through grant funding or through foundation support.

4) Luverne is an amazing community which I witnessed with my brother Dan’s event last October. We grossed a significant amount of money in one night for him with people of all ages coming to Take 16.

A few years ago, a group of my camping friends came to Luverne for a fun day of eating, shopping and we did not plan on going to the nutcracker museum. We ended up going, and honestly, the group shared this was one of the best experiences because it was different and unique. We got Chamber punch cards and stopped at many of the stores and spent money with local retailers, ate at Sterling’s and had a beer at Take 16 (or two) and then went to the museum.

Becker, continued on page 6A

Are you ‘for it’ or ‘against it’?

This is going to be one of my shorter columns mostly because all I am going to do is ask myself a few questions, and my answers will be one of two possible answers which are “for it” or “against it”.

First question: Should the state of Minnesota eliminate state tax on Social Security benefits? For it.

Should the state of Minnesota offer free school lunches to all students? For it.

Should the government forgive \$20,000 in student loans? Against it.

Should the FDIC cover deposit losses over \$250,000 for the depositors of the Silicon Valley Bank? Against it.

Should a complete reconstruction of State Highway 75 from the Iowa border to Pipestone start this spring? For it.

Political term limits? For it. Flat income tax across the board? For it.

Daylight saving time or Standard time ... just pick one? For it.

Unemployment benefits



FOR WHAT IT’S WORTH

By Rick Peterson,
general manager

for School Paraprofessionals? For it.

Giant Nutcracker? For it. Bacon and eggs? For it.

Bacon on everything? Against it.

Green beer on St. Patrick’s Day? For it.

Self-checkouts? For it.

Adding a credit card fee to your bill? Against it.

Raising prices to cover credit card fees? For it.

Ready for spring? FOR IT!

E-mail: editor@star-herald.com Web site: star-herald.com
Phone: 507-283-2333 Fax: 507-283-2335

Published Thursdays by Tollefson Enterprises
POSTMASTER: Send address changes to
117 West Main, P.O. Box 837, Luverne, MN 56156.
Periodicals postage paid at Luverne,
Permit #33 and at additional mailing offices.

General manager: Rick Peterson

Sales: Wyatt VanSteenberg

Office manager: Deb Lusty

Office assistant: Jennifer Nelson

Production Manager: Heather Johnson

Production: Brooke Huisman

News staff:

Lori Sorenson, editor

Mavis Fodness, reporter

Esther Frakes, copy editor

Greg Hoogeveen, sports editor

Rock County
STAR HERALD
Rock County's newspaper since 1873

(ISSN 0889-888X)

SUBSCRIPTION RATES
\$79 per year in Rock County; \$96 per year all other areas.
Single copies \$1.25

Entire contents copyrighted by
Tollefson Publishing Roger Tollefson, publisher

The *Star Herald* encourages letters to the editor expressing the opinions of readers and intends to print all letters. Letters not meeting the guidelines will not be printed. The *Star Herald* will verify the authenticity of all letters. Letters must have the name of the writer, a signature and address. Unsigned letters will not be considered. The *Star Herald* will edit for grammar, spelling and clarity. Any letters containing offensive language, libelous or slanderous material, or misleading or false information will be rewritten before being published. The *Star Herald* will not publish letters written with the sole intent to advertise or serve as a thank-you. Letters with more than 300 words may be edited. The deadline for letters is Monday 10 a.m. They may be delivered or mailed to the editor, *Rock County Star Herald*, P.O. Box 837, 117 W. Main St., Luverne, Minn. 56156.

ON THE RECORD

Dispatch report

March 10
•Complainant on N. Estey Street reported a disorderly.
•Complainant on N. Davidson Street requested assistance from another department.
March 11
•Complainant east-bound on Interstate 90, mile marker 7 and 8, Beaver Creek, requested assistance from another department.
•Complainant on N. Kniss Avenue and Main Street reported debris.
•Complainant westbound on Interstate 90, mile marker 18, Magnolia, requested assistance from another agency.
March 12
•Complainant east-bound on Interstate 90, mile marker 9, Beaver Creek, reported a driving complaint.
•Complainant east-bound on Interstate 90, mile marker 6, Beaver Creek, reported a driving complaint.
•Complainant issued a warrant.
March 13
•Complainant on 71st Street, Beaver Creek, requested assistance from another department.
•Complainant on 191st Street, Jasper, re-

ported weapons.
March 14
•Complainant on Minnesota Avenue and Dakota Road reported a fire.
•Complainant in Hills reported a civil issue.
•Complainant on Main Street and Estey Street, Luverne, reported a parking issue.
•Complainant in Luverne reported a civil issue.
•Complainant on 3rd Street and Church Avenue, Hills, reported a parking complaint.
•Complainant east-bound on Interstate 90, mile marker 8, Luverne, reported a driving complaint.
March 15
•Complainant on 30th Avenue reported a road closure.
•Complainant on 20th Avenue, Valley Springs, South Dakota, reported a civil issue
In addition, officers responded to 23 motor vehicle accidents, 2 deer accidents, 17 vehicles in the ditch, 12 ambulance runs, 6 paper services, 2 animal complaints, 1 fingerprint request, 3 burn permits, 1 background check, 1 alarm, 2 purchase and carry permits, 5 stalled vehicles, 13 traffic stops, 16 abandoned 911 calls, 1 test, 1 welfare check, 2 OFPs and 1 follow-up.

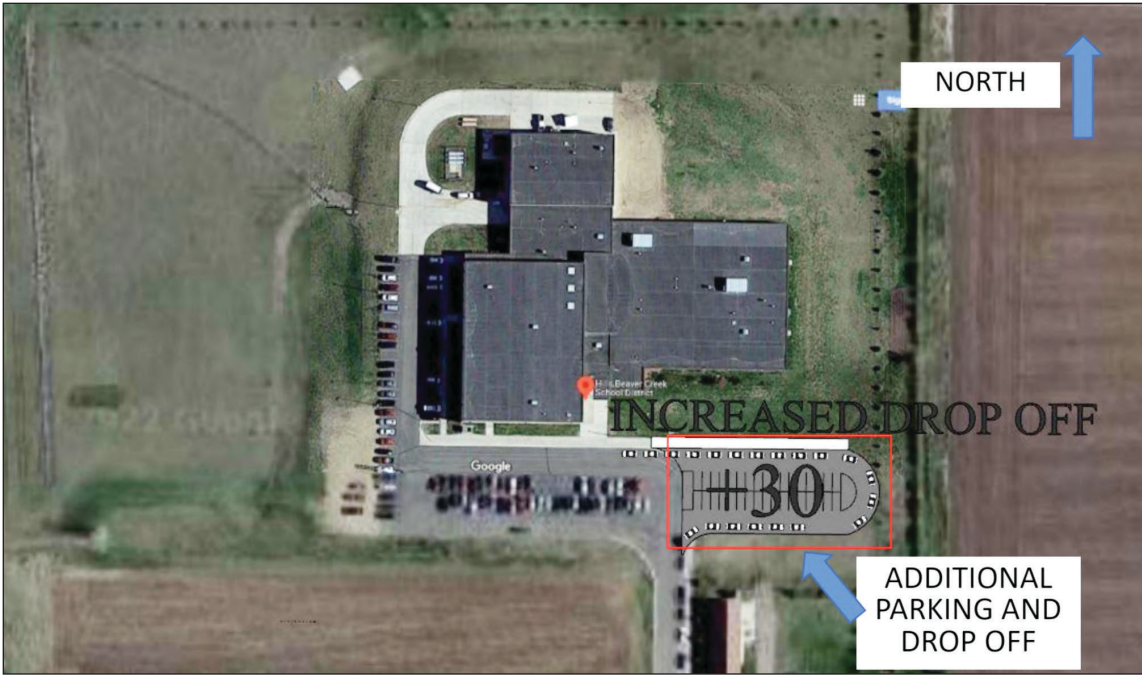


Rendering courtesy of ATSR Architects

The second bond referendum question asks Hills-Beaver Creek School District voters for \$3.475 million to demolish the former high school (pictured above) on East Second Street in Hills and repurpose the area as a parking lot for the existing Hugo Goehle gymnasium and locker rooms, which will also be remodeled under Question 2 of the referendum.

H-BC school building/continued from page 1A

new parking area at the current secondary school, also in Hills. Cost is \$3.475 million.
The land purchase from SpringBrooke LLC is contingent on the successful passing of H-BC's bond referendum Question 1.
Question 2 cannot pass without voters also agreeing to Question 1.
Two public meetings and tours are scheduled related to the upcoming referendum vote.
The first meeting is 7 p.m. Thursday, March 23, (today) at the elementary school gymnasium in Beaver Creek.
The second meeting is 7 p.m. Tuesday, March 28, at the Hugo-Goehle gymnasium at 205 E. Second in Hills.



Two bond referendum questions will be asked to residents of the Hills-Beaver Creek School District, including a second question for \$3.475 million that includes expanding the parking lot at the existing secondary school in Hills located on Summit Avenue.

Becker/continued from page 4A

Luverne has done a great job marketing Hot Dog Night, which by the way was a quirky thing back when we were kids. Many made jokes about this promotion, but look at the number of people who come to town for the music, dance performances, ice cream and hot dogs!

There are many more ways Luverne can be marketed, which is one of my strengths, but ideas have to be quirky to draw tourists to town!
Before Luverne can draw new people to move into Luverne, you need to have more affordable houses for people to move into, so

they don't have to travel from Sioux Falls and other areas.
Honestly, Craig and I loved living in Luverne and would have stayed, but there were not employment opportunities in Luverne for us. After three years of commuting, no prospect of employment for us in Luverne and getting

pregnant with our son, Thomas, we moved to Sioux Falls where we have been for over 25 years. If you ask us if we plan to stay here, that is questionable because we would love to retire ... where? Luverne
Julie (Pick) Becker,
Sioux Falls,
Formerly of Luverne

Brooks/continued from page 4A

least get people to pull off the freeway, perhaps spend a few hours in downtown, and if just 10 people a day stop because of the nutcrackers, that's 10 more people a day than you have now.
And if half of them eat lunch, or check out a couple of shops while in town, that's five more lunches each day than you have now. Why not take advantage of, and leverage, something you already have? And that someone has so freely given to the town to help it?
What do you have to lose? And do you have anything better to hang your hat on now that will differentiate you from everyone else? Is anything even in the pipeline?
And if it's the military museum, the gallery or other "static" activities, just remember that once we've

*What do you have to lose?
And do you have anything better to hang your hat on now that will differentiate you from everyone else?
Is anything even in the pipeline?*

been there and seen those, there's no reason to come back. You could have a lot of fun with the nutcrackers.
Imagine a "where's Waldo" nutcracker hidden among them and whoever finds him wins something. Every day it's moved. A person could spend hours just trying to find Waldo among 3,000-plus nutcrackers.
And they might come back time and again. And what if people were encour-

aged to give nutcrackers to the museum? It might only be a year or two before it's the largest collection in the world.
It would certainly put Luverne "on the map," and it even fits the European theme and history of the town.
And I will always fiercely defend Betty. She's solid as a rock, works pretty much full time, has "given" her collection for everyone on the planet to see, and I'm quite sure she's saner than

the people complaining about the idea, which wasn't even hers.
They should call me the crazy one if they don't like it. Betty has just played along thinking it might make a difference for Luverne. It wasn't her idea to make this the brand. It was mine.
When people complain, you should always ask, "What's your better idea?" And it can't be the generic mumbo jumbo that people won't go 10 minutes out of their way for.
Sorry if I'm being a bit harsh, but if you bend to the naysayers, you will never move forward as a community. People hate change, yet without it, you will die as a community economically.
Roger Brooks,
author, speaker and destination expert,
Peoria, Arizona

GREEN EARTH PLAYERS PROUDLY PRESENTS

ALICE IN WONDERLAND
Adaptation by Tim & Carol Coyynova

MARCH 24-26 AND MARCH 30 - APRIL 2, 2023
THE HISTORIC PALACE THEATRE • LUVERNE, MINNESOTA
TICKETS: 507-283-4339 • PALACETHEATRE.US

Main Street First Farmers & Merchants VARTQUIST Palace

Rock County	
2023 Board of Appeal & Equalization Schedule	
Monday, April 10 , 2023	
CLINTON TOWNSHIP Clinton Township Hall - Steen	9:00 to 9:30 A.M.
BEAVER CREEK TOWNSHIP Beaver Creek Township Hall	10:00 to 10:30 A.M.
SPRINGWATER TOWNSHIP Springwater Township Hall	11:00 to 11:30 A.M.
BATTLE PLAINS TOWNSHIP Justin Prins Residence - 1941 231 st St, Edgerton	3:00 to 3:30 P.M.
MOUND TOWNSHIP County Highway Building- Luverne	7:00 to 7:30 P.M.
Tuesday, April 11 , 2023	
VIENNA TOWNSHIP Kenneth Community Center	10:00 to 10:30 A.M.
MAGNOLIA TOWNSHIP County Highway Building - Luverne	3:30 to 4:00 P.M.
DENVER TOWNSHIP Hardwick City Hall	7:00 to 7:30 P.M.
Wednesday, April 12 , 2023	
LUVERNE TOWNSHIP Pizza Ranch, 110 E. Main St., Luverne	11:00 to 11:30 A.M.
Thursday, April 13, 2022	
OPEN BOOK MEETING AT COURTHOUSE Kananranzi, Martin, Mound, Rose Dell Township	9:00 A.M.
Tuesday, June 20, 2023	
ROCK COUNTY BOARD OF APPEAL & EQUALIZATION Rock County Courthouse, Luverne	6:30 to 7:00 P.M.

Celebrating 10 YEARS

LUVERNE STREET MUSIC

Duet / Ensemble Festival
Sunday, March 26 at 2:00 pm
at the Carnegie
205 N Freeman Street

Annual Spring Showcase
Saturday, April 22
Two recitals: 4:00 pm and 6:30 pm
at the American Reformed Church
304 N Fairview Dr

Both events are free and open to the public.

luvernestreetmusic luvernestreetmusic@hotmail.com

HELP SAVE THE PLANET

RECYCLE

BASEBALL & SOFTBALL FUNDRAISER

WATER SOFTENER Salt Sale

Sponsored by Bill's Water Conditioning
Delivery will be
Saturday, April 1, from 9 am-3 pm
or through prior arrangements

\$10 / bag (50 pound bags - minimum 2 for delivery)
If you pick up at Bills Water, price is \$7.50 per bag
Bags may be picked up April 1 at 606 E. Dodge St.
10 bags or more for out of town delivery
Pre-order & prepay on or before April 1

You may stop at Bill's Water Conditioning
or Call Bill's Water Conditioning at 283-4448
or Coach Paquette at 507-220-0363 or Coach Mauer 320-212-0041

www.star-herald.com



Martha and retired Pastor Terry Morse (above) were honored by congregation members for their dedication to the First Presbyterian Church in a special ceremony March 12. Pastor Terry received the Pastor Emeritus honor (right).

Morse honored as Pastor Emeritus



The Reverend Doctor Terry Morse was honored with the title of Pastor Emeritus during the Sunday worship service at the First Presbyterian Church in Luverne on March 12.

The title is given to a pastor who retires and the congregation is later moved “with affection and gratitude” to continue an association in an honorary relationship.

“Today that title is given to you once again,” said the Rev. Dr. Val Putnam, interim Presbyterian Church pastor in Luverne.

“You are ‘Pastor Terry,’ and you will be as long as you live. You will be Pastor Terry, because this congregation and the Session has recognized the outstanding contribution you’ve made to this church.”

Pastor Morse and his wife, Martha, were both honored during the March 12 service.

“Martha has been with Terry as a partner in ministry this whole

time, and this whole congregation is aware of her energy, imagination and love,” Putnam said. “We are so blessed to have Martha with us.”

Phil Voigt and Deb VanderKooi shared comments about the Morses during the ceremony.

Voigt said he admired the Morses’ ability to adapt to the congregation and the community when they first moved to Luverne, and he thanked them for their sacrifices and grace.

“Please know this congregation will continue to be blessed, as it has been, through your service,” Voigt said.

“We’d like to acknowledge that this congregation cares for you. We know that life has thrown you some curves, and we have watched you take on significant challenges while maintaining a gracious approach to them.”

VanderKooi thanked Pastor

Morse for his generous spirit and gentle guidance.

“Thank you, Pastor Terry, for all you’ve done for our community and for the First Presbyterian Church,” she said.

Morse thanked the congregation for the honor when he accepted the plaque.

“You’ve been such a wonderful part of my life, Martha’s life and the life of my family,” he said.

“You all are very special to me. And I am so grateful and I will always have you in my heart and pray for you as you continue your journey in faith and hope. God bless you all.”

The Morses have served churches in California, New Jersey, New York, Pennsylvania and Minnesota. Pastor Morse retired in 2012 after 40 years in the ministry.

“Ministry is a challenge,” he said. “But it’s also a wonderful opportunity to enjoy God’s people.”

CELEBRATIONS

Open house

An open house bridal shower for **Erica Marshall**, bride-to-be of John Ferguson, will be at 1:30 p.m. Saturday, April 1, in the atrium of St. John Lutheran Church in Luverne.

GENERATIONS MENU

Monday, March 27: Chili, corn, fruit, cornbread, dessert.

Tuesday, March 28: Chicken ala king, peas and carrots, pineapple chunks, gelatin with whipped topping, brown rice.

Wednesday, March 29: Goulash, mixed green salad with dressing, tropical fruit, bread, dessert.

Thursday, March 30: Pork loin, candied yams, steamed California Normandy vegetables, dinner roll, dessert.

Half-Price Day sponsored by Christian Reformed Church.

Friday, March 31: Lemon pepper fish, baked potato with sour cream, coleslaw, bread, apple Brown Betty.

LSS Dining offers well-balanced and affordable meals in a community atmosphere.

Call Pam Franken at 283-9846, extension 11 to reserve one day prior, to arrange to pick up a dinner or for home-delivered meals.

Gift certificates are available at the meal site or online at www.lssmn.org/nutrition.

Winter weary? Bring touch of spring inside

I, as well as many of you, am getting weary of winter. The lengthening hours of daylight and warmth of the sun on the days we see it are encouraging.

A road trip to Sioux Center yesterday (Sunday) to visit a relative showed lots of open ground, a sharp contrast to our white landscape and the snow-piled road ditches.

My therapy this week is to go and cut a few branches of pussy willow, apricot and lilac to force indoors. Forsythia, plum, and crabapple are other good candidates. I will cut the stems, put them in a deep vase of water, and set the vase in a bright, sunlit area, but not in direct sun.

It is exciting to watch how quickly the emerging leaves and flower buds expand. You can expect color



KNOW IT AND GROW IT

By George Bonnema, Luverne Horticulturalist

within two weeks.

That’s the best I can do today to assure you that spring will come ... because it always does!

Bonnema is a gardening enthusiast and former greenhouse owner. He can be reached at flowergb@iw.net.

1943: Diamond Club’s William Mitchell talks about life before retirement

The following article is part of the Diamond Club Member group that began in the January 7, 1943, issue of the Rock County Star Herald. Members of this group consist of persons of age 75 and older.

The following appeared in The Rock County Herald on Sept. 2, 1943.

You can’t beat a life of retirement for a good time, according to William Mitchell, Luverne, who after four years of taking life easy, still has enough fun working with his tools and in his garden, to keep him from being lonesome to be “on the job.”

Mr. Mitchell retired in 1939 after having been employed for 53 years as railroad depot agent, telegraph operator and yardmaster in towns and cities throughout a big area in the Midwest. Now, when he tires of just loafing, he goes out to his workshop where he has a lathe and other woodworking tools, or he works in his garden. Being a city councilman, he also has certain duties to perform in connection with that office, so he certainly isn’t living a life of idleness, although it might be one of leisure.

Mr. Mitchell has had an interesting life, ever since he was a boy. Born in Fond de Lac, Wis., Sept. 3, 1868, the son of James Monroe and Mathilda Dusenberry Mitchell, he moved with them at the age of three to Winnecheik county, Iowa. The trip was made by ox-team and covered wagon, and he recalls ferrying across the Mississippi river at McGregor.

His first home was a log house. There were many snakes in the country at that time, and on many occasions his mother would carry him around while



BITS BY BETTY

By Betty Mann, Rock County Historian

driving snakes through openings in the log floor.

“Wild! I’ll say that country was wild in those days,” Mr. Mitchell relates. “You could hear the wolves howl at night, and lots of times I heard the groundhogs and the skunks fight for possession of the living quarters under the house. I’d lie in bed and listen to them, half scared to death.”

His father borrowed money from his grandfather at 12 percent interest to buy the land on which they settled. At that time, the farm consisted of 80 acres of hard timber. Now it has been all cleared, and farm land.

He helped his father clear the land, and rattle snakes often hid in the brush piles which were numerous in the clearings. When the brush would be burned, the snakes crawl out, only to find men and boys waiting with pitchforks to kill them. Mr. Mitchell states that on

Bits, continued on page 8A

REMEMBER WHEN

10 years ago (2013)

•The historic Palace Theatre is once again challenged to keep pace in business that caters to large, multiplex theaters in a digital age.

Board members of the Blue Mound Area Theatre group recently learned that the Palace Theatre must switch to digital projection by the end of the year or cease to offer first-run movies.

The current 35 mm format is being phased out, and in order to continue offering first-run movies in Luverne, a digital projector will be required.

Early estimates are that the upgrade will cost nearly \$70,000, and local theater board members are wondering how it will be paid for.

BMAT members considered options Monday night at their annual meeting.

25 years ago (1998)

•Fourteen students from Luverne High School, along with their German teacher, Esther Spease, will leave for Germany on March 28.

Students making the trip are Trista Boyenga, NicCeynowa, John Cox, Katie Dukleth, Sarah Ebert, Aaron Hilger, Jeff Kaczrowski, Becky Kaczrowski, Jason Krueger, Jordan Petersen, Jessica Popp, Alex Serie, Andy Tilstra and Katie Vander Kooi.

While in Germany they will visit Frankfurt, Rothenburg ob der Tauber, Munsingen, Oberammergau, Munich and Heidelberg.

50 years ago (1973)

•Thanks to an alert neighbor, Gordon Helgeson still has his IHC 806 tractor.

The tractor, taken from the yard of his farm about a mile and a half northwest of Beaver Creek Sunday night, was recovered several hours later from a farm field about three miles north of Valley Springs.

The neighbor, who requested that his identity be withheld, said he had been watching television Sunday evening, and decided to step out of doors.

As he stood there, he heard the sound of a tractor, but could see no lights. He recognized the sound as coming from a diesel tractor, he said, and he became curious. ...

The farmer recognized the make and size of the tractor as one of two of its kind in the neighborhood. He said he just had a hunch it was Gordon Helgeson’s.

75 years ago (1948)

•Luverne baseball enthusiasts will have an opportunity Monday night to lay the foundation for the organization of a baseball team to play in Nobles county league.

A meeting has been called for 7:30 p.m. in the courthouse basement, and all young men interested in playing are urged to attend.

A league comprised of Worthington, Adrian, Rushmore and Ellsworth, has already been formed, and Luverne and Hardwick have been invited to make it a six-team loop.

Considerable interest has been shown in the sport here by young men who have passed the junior league age, and an appeal is made to them to be present at Monday night’s meeting.

100 years ago (1923)

•A basketball tournament, similar to the district tournament held here a week ago Saturday, will be staged at the armory tomorrow for the purpose of determining the county championship. The boys’ teams of Luverne, Beaver Creek, Magnolia, and Hardwick high schools will enter, but only girls’ teams of Luverne, Hardwick and Beaver Creek will play. Hills will not participate in the tournament.

As there are only three girls’ teams, it has been rather difficult to arrange for the preliminaries. Luverne will play Hardwick here this afternoon, however, and the winners of this game will play the Beaver Creek girls, who now hold the best record for the season, for championship honors tomorrow evening.

OBITUARIES

Dwayne Rollag

Dwayne Allen Rollag, formerly of Brookings, South Dakota, died peacefully March 11, 2023, at the age of 92, in Surprise, Arizona, under the loving care of family and hospice.

He was born June 18, 1930, in Steen, Minnesota, to Orville and Rose Rollag. He was the oldest of their seven children. At age 6, he moved with his family to Rock Rapids, Iowa, where he graduated from high school in 1948.

Dwayne always loved music, so it was fitting that he began to pursue a music degree at the University of South Dakota. Just shy of completing that degree, he served in the army during the Korean War and was medically discharged. He then had the opportunity to work over a summer as a surveyor, and he discovered his passion for engineering. Thereafter, he obtained a bachelor's degree in civil engineering at the University of Minnesota in 1959.

He worked for three years as a professional engineer before attending South Dakota State Univer-

sity (SDSU) to complete his master's degree in 1966. He finished his Ph.D. in Civil Engineering at Purdue University in 1975 and became a professor at SDSU. He thoroughly enjoyed teaching and mentoring students and said that they kept him young at heart. In 1979 he became the SDSU department head of civil and environmental engineering and served in that role until his retirement in 1999. Dwayne specialized in water treatment and management and was active and recognized locally, regionally and nationally on many water and wastewater related issues.

Dwayne married Helen Lu Haggard of Luverne, Minnesota, on September 1, 1956. The two spent most of their years living in Brookings, South Dakota, where they raised their three girls, Susan, Mary and Lisa, before retiring to Sioux Falls, South Dakota, and wintering in Goodyear, Arizona.

Dwayne enjoyed spending time with friends, golfing, running, playing the trumpet in the municipal band, serving in the Rotary Club,

strumming on his guitars, listening to choirs, and attending country or rock concerts. His favorite thing to do, though, was to spend time with his family, which involved many sporting events, movies with popcorn, dining at favorite restaurants, walking the dogs, and enjoying lots of cats. Dwayne loved his children and grandchildren and was especially fond of celebrating their events and accomplishments. He was a self-proclaimed stubborn Norwegian Lutheran and was an active, devoted member of First Lutheran Church, Brookings, South Dakota. Dwayne was a loyal husband, father, sibling, friend, community member and SDSU Jackrabbit fan. He had a humble, generous heart, and he maintained a strong faith and positive, uplifting spirit throughout his life.

He will be greatly missed by his loving wife of 66 years, Helen Rollag; three daughters, Susan (Joe) Bowar of Goodyear, Arizona, Mary Liggins of Sioux Falls, South Dakota, and Lisa (Dan) Ostlie of Fargo, North Dakota; grandchildren Keesha and Theron Liggins, Lauren, Ben and Sarah Ostlie; and great-grandchild Brielle Davis; siblings Sharon Snuttjer

of Clive, Iowa, and Rhea Jean (John) McBride of St. Paul, Minnesota; sister-in-law Winifred Haggard of DeSmet, South Dakota; and many nieces, nephews and extended family.

He was preceded in death by his parents, Orville and Rose Rollag; siblings and their spouses, Donavan (Catherine) Rollag, Doris (Diedrik) Nelson, Darlene (Gene) VandeKop, and David Rollag; his mother-in-law, Jessie Haggard; brothers-in-law Jerome Snuttjer and Dale (Sonia) Haggard; and great-grandson Kyrie Davis.

A celebration of life service will be planned for the summer of 2023. Burial of cremains will be at the Maplewood Cemetery in Luverne, Minnesota. In lieu of flowers, the family requests that memorials be directed to the Dwayne and Helen Rollag Scholarship Endowment in CE at SDSU by mail in memory of Dwayne Rollag to SDSU Foundation, Lohr Building, 815 Medary Avenue, Brookings, SD 57006 or online at <https://givenow.sdstate-foundation.org/campaigns/24272/donations/new?a=4854132&amt> (0323 V)

Mavis King

Mavis King, 92, Luverne, formerly of Dell Rapids, South Dakota, died Saturday, March 18, 2023, at Sanford Luverne Hospital.

A Mass of Christian Burial will begin at 10 a.m. Saturday, March 25, at St. Mary Catholic Church in Dell Rapids. Visitation will be one hour prior to the service.

Mavis Lund was born on April 24, 1930, to Charles and Minnie (Roemeling) Lund in Adrian. She was a graduate of Adrian High School and Mankato State Teachers College. She taught elementary school in Brewster, Pipestone and Adrian. After moving to Dell Rapids, she taught in the Dell Rapids Elementary School. She became director of the Dell Rapids Carnegie Public Library in 1971, retiring in 1992.

Mavis married Jud King on Jan. 9, 1960, in Adrian. They owned and operated the Dells Theatre until Jud's death in 1997.

Mavis was a member of St. Mary's Catholic Church and Altar Society. She enjoyed her Red Hat Society friends and their outings. She was involved in the Dell Rapids Museum and Historical Society for many years. Mavis was an avid reader all her life and enjoyed the Minnesota Twins.

She is survived by her sister, Mary Kloster of Otsego; nieces and nephews Anne

(Jim) LeBrun of Luverne, Bret (Gina) Heitkamp of Champlin, Kyle (Eileen) Heitkamp of Excelsior, Kimberly (Craig) Lieberherr of Maple Grove, Karen (Shawn) Julian of Hudson, Wisconsin, and Kent Kloster of Delano; great-nieces and nephews Tyler (Anna) LeBrun, Alex (Shay) LeBrun, Brandon (Kaylee) LeBrun, Kalyn (Kevin) Auth, Stephanie (Mitch) Heitkamp, Scott (Aja) Heitkamp, Marshall (Erin) Heitkamp, Hannah (Alton) Heitkamp, Lincoln Heitkamp, Justin Lieberherr, Zack (Katie) Lieberherr, Paige Lieberherr, Ashley (Will) Julian, Lauren Julian and Sidney Julian; eight great-great nieces and nephews.

She was preceded in death by her husband, Jud; her parents; sisters Joyce Benson and Charlotte Heitkamp; brothers-in-law Don Heitkamp, Brad Benson and Lawrence Kloster; great-niece Alecia Heitkamp, and special aunt and friend Angeline Reisdorfer.

Memorials may be directed to the Dell Rapids Hospital Foundation, Dell Rapids St. Mary Catholic Church or the Dell Rapids Museum.

Arrangements are provided by Kahler Funeral Home of Dell Rapids, www.kahlerfh.com.

(0323 F)

Loren Wenzel

Loren Alvin Wenzel died on March 2, 2023, at his home in Cape Coral, Florida. He was 77.

Born on December 12, 1945, in Luverne, Minnesota, to lifelong residents Alvin and Lois (Kuechenmeister) Wenzel, Loren was the eldest of three siblings. Growing up surrounded by a large extended family, including fifteen aunts and uncles and numerous cousins, instilled in him an appreciation for the importance of family, which he passed down to his children and grandchildren, nieces and nephews.

A 1963 graduate of Luverne High School, Loren excelled at varsity basketball and football. He was "a late bloomer" (as he would say later), waiting several years after high school to attend college at Inver Hills Community College while he worked nights at a slaughterhouse in South Saint Paul. He then earned a BS in accounting and MBA from Mankato State University (1978, 1980) and a doctorate of business administration (specializing in historical accounting) from Memphis State University (1990).

After holding teaching

positions at Wichita State University (Kansas; 1987-1988), Mankato State University (Minnesota; 1988-1998), Buena Vista University (Iowa; 1998-1999), and Austin Peay State University (Tennessee; 1999-2000), Loren moved on to Marshall State

University (West Virginia; 2000-2009), where he was Professor and Head of the Division of Accountancy and Legal Environment and the Elizabeth McDowell Lewis Endowed Chair of the Lewis College of Business. During Loren's tenure at Marshall, the West Virginia Society of Certified Public Accountants named him the West Virginia Outstanding Accounting Educator of the Year for 2004. From 2009 until his retirement to Cape Coral in 2013, Loren was Dean of the West Liberty University College of Business.

Never admitting talent or particular intelligence, Loren attributed his success to stubbornness, and teaching was a way to show his fellow screw-offs what was possible with grit and determination. He was passionate about this pursuit and created an extended family of former graduate assistants and students over

the course of his career.

Borrowing from the observations of Lewis Grizzard, Loren would quip, "If you're not the lead dog, the view never changes." But he ultimately proved the truth behind the joke, traveling extensively as a leader in his field, both at home and abroad through teaching positions in Germany and India. He was invited to present his doctoral thesis in Sansepolcro, Italy, the birthplace of Luca Pacioli, the father of double-entry accounting.

A generous host with a hearty laugh that inspired others to join in, Loren was known for keeping glasses ever full and sharing fresh fish out on his lanai, among the murals he had commissioned to fill the walls surrounding the pool. He loved to innovate new ways to infuse cuts of meat and fish with deliciousness, then cook them in the smoker or on the grill.

We will remember Loren by keeping our glasses full, laughing at ourselves in absurd situations, and enjoying life.

Loren was predeceased by his wife, Nylah (Roozen) Wenzel; his father, Alvin Wenzel; his sister, Carol Krugerud; and his nephew Adam Krugerud.

He is survived by his mother, Lois Wenzel of Hastings, Minnesota, and his sister, JoAnn Meyers (David) of New York; his daughter Lisa Szumilas (Jeff) of Hudson, Wisconsin; Lisa's mother, Jan Good (Dale) of White Bear Lake, Minnesota; his daughter Sara Riley (Andrew), and 2-year-old granddaughter Adrienne of Oak Park, Illinois; his son, Karl Wenzel, of Kansas City, Missouri; and Sara and Karl's mother, Judy Peterson (Frank Gersich) of Salina, Kansas; his bonus sons, Mike (Sheila) and Dan (Renee) Roozen, step-granddaughters Crystal and Cassandra and step-great-grandson Brandon; and numerous nieces and nephews.

The family is grateful to the "dream team," headed by Dee Dillon, and special neighbors Richard and Bonnie Chapelle, Mark and Gina Spaulding, and Maria and Kenneth Cacace for their support in Cape Coral.

A celebration of life and interment of ashes will take place at the family plot in Luverne at a later date this summer.

Donations in his memory may be made to the Alzheimer's Foundation (<https://alzfdn.org/support->).

(0323 V)

DEATH NOTICES

Bruner Keesey

Bruner Keesey, age 2 months, Luverne, died unexpectedly on Tuesday, March 14, 2023, at the Sanford Luverne Medical Center.

Arrangements are pending through the Hartquist Funeral Home in Luverne, hartquistfuneral.com. (0323 DN)

Yuvonne Graphenteen

Yuvonne Graphenteen, 91, Luverne, died Wednesday, March 15, 2023, at the Parkview Manor in Ellsworth.

Services are pending at a later date through the Hartquist Funeral Home in Luverne, hartquistfuneral.com. (0323 DN)

ADVERTISE TODAY
with the Star Herald

Call Rick or Wyatt

507-283-2333

email sales@star-herald.com

FREE INTERNET
Qualify today for the Government
Free Internet Program

**YOU QUALIFY for
Free Internet if you
receive Medicaid,
SNAP, WIC,
Housing Assistance,
Veterans Pension,
Survivor Benefits,
Lifeline and Tribal.**

maxsip
CONNECTS

CALL TODAY (866) 433-5324

**Bonus offer: 4G Android Tablet with
one time co-pay of \$20**

ACP program details can be found at www.fcc.gov/affordable-connectivity-program-consumer-faq

**Prepare
for power
outages
today**

**WITH A HOME
STANDBY GENERATOR**

\$0 MONEY DOWN + LOW MONTHLY PAYMENT OPTIONS

Contact a Generac dealer for full terms and conditions

**REQUEST A
FREE QUOTE**

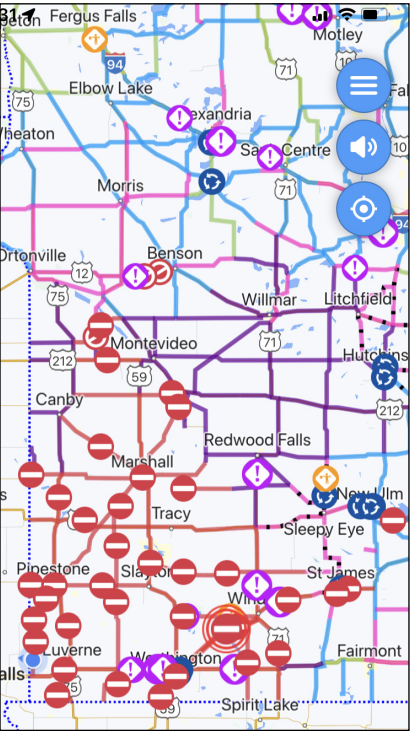
CALL NOW BEFORE THE
NEXT POWER OUTAGE

(855) 984-8982

FREE 7-Year Extended Warranty*
— A \$695 Value!

*To qualify, consumers must request a quote, purchase, install and activate the generator with a participating dealer. Call for a full list of terms and conditions.

READ US ONLINE!
star-herald.com



All roads were closed in southwest Minnesota Thursday evening.

Storm/

from 1A warnings. However, Van Batavia said some were simply trying to get home from work before the roads were announced closed. The Minnesota Department of Transportation closed all state highways and Interstate 90 Thursday in Rock, Nobles and Cottonwood counties, along with portions of Jackson and Watonwan counties in southcentral and the southwest corner of Minnesota. I-90 from the South Dakota border to Jackson was closed. “Strong winds are creating blowing and drifting snow, significantly reducing visibility,” the state announced. “The road closures are expected to remain overnight and until conditions improve on Friday. MnDOT reminds motorists that it is illegal to travel on a closed road, and if a motorist requires rescuing, they are liable for all related rescue costs.” State and county plows were out Friday morning, but blowing and drifting snow made for difficult travel most of the day Friday and into Friday night.

Springwater Township write-in election/continued from page 1A

in attendance voting “aye” and no one voting “nay.” Rodney Lowe has been Springwater Township’s contracted snow mover for 38 years. “I’ll be the first to admit we’ve struggled this year,” Lowe said after the meeting. “When we get wind like this, it takes three to five days to get the roads cleared.” He and his brother move snow on 103 miles of township roads — 55 miles in Springwater Township and the rest in two neighboring South Dakota townships. “The thing that bothers me is that it sounds like they really bad-mouthed me at the meeting,” Lowe said. “I get that nobody likes to look out and see the plow hasn’t been by, but we always try to make one pass, so at least people can get out. But we can’t help that wind blows the roads shut behind us. ... It’s not like I’m sitting at home eating bonbons.” He said Springwater isn’t the only township in Rock County struggling to keep up. Beaver Creek Township hired an extra snowblower to help the plow driver keep up, and Rose Dell Township hired a dozer to push snow from the shoulders farther off the road. “They’ve spent \$50,000 just dozing the snow,” Lowe said. “That’s in addition to their regular plowing.” Lowe’s bill so far in Springwater Township is roughly \$80,000. “That’s the most it’s ever been,” he said. “A typical winter for Springwater Township is \$11,000.” He said citizens are usually happy with his work because he uses a snowblower to spread the snow out of the ditch, rather than just winging it up on shoulders. This year, however, the practice of plowing a path and following up with the blower didn’t keep up with drifting snow that plugged the roads behind him. Springwater Township Board member Tom Baustian said Lowe’s equipment has a plow, but not the extra blade to “wing” snow up on road shoulders. “A wing on the plow buys you more time,” Baustian said. “When Rodney comes through with an 8-foot-wide path, it just drifts shut behind him. ... The wind was the real enemy here. It wasn’t Rodney Lowe.” Springwater Township’s contract with VerSteeg goes into effect next winter, but last week he started helping Lowe with the miles on the east half of the township.

Baustian admitted the meeting had become contentious, but he defended Lowe’s work history with the township. “We appreciate all the service he has given us over the years,” he said. “We were just at a breaking point, and we were worried about liability ... for emergency equipment to get in and out, if needed.” For his part, Sandbulte said he wasn’t that interested in becoming an elected official; he just found himself moving his own snow this winter, and frequently the neighbors’ snow, when the township plow couldn’t keep up. “It’s been a frustrating winter for everyone,” Sandbulte said. “Probably more so for livestock farmers trying to get feed in and trucks in and out.” He has shared frequent social media video posts of himself cleaning the roads so he can feed and bed his livestock and help his dad, Gerrit Sandbulte, with cows that are calving. “Also, I have a video of me bringing my kids to the county road for the bus in my loader tractor,” Sandbulte said. He said many of the people who showed up at Tuesday’s meeting were frustrated with the condition of their roads this winter. “Some of them have had to use paid time off because they haven’t been able to get to work for multiple days after a storm has ended,” Sandbulte said. Sandbulte said he’s not exactly sure how he came to be an elected township board member. “I’m honestly not sure who spearheaded the write-in,” he said. “I think it snowballed from one or two people, and they told one or two people, and so on.” He was sworn in Friday, and his three-year term starts with the April 4 Springwater Township Board meeting. “Hopefully I can do a good job,” Sandbulte said. “It will be a steep learning curve for me, but I travel all these township roads with the balers, so that should help. ... I’ve talked to board members from other townships in Rock County who are more than willing to answer any questions I have.”

Bits by Betty/continued from page 6A

several occasions while pitching bundles to his father on a grain stack that snakes would crawl out of the bundles. However, neither his father nor he was ever hurt. After finishing the public school, he attended high school in Ossian, Iowa, and after that went to Upper Iowa University at Fayette, where he took a business course. He came home and worked on the farm, then decided he wanted to be a railroad man. He was given a chance to learn to be a telegraph operator, and then was given his first job at La Porte. His salary was \$40 a month for a 16-hour day. From that time until coming to Luverne in 1918, Mr. Mitchell was moved from one town to another. While he was employed at Dysart, Iowa, he became acquainted with Cora Brode, and they were married at her home in Benton county, Dec. 23, 1891. He worked nights at Dysart for eight years. He reports that he sold many tickets to people from that area who were coming to southwestern Minnesota on home seeker’s excursions. In the spring, these same people would leave on immigrant trains for their new homes which had been arranged for the previous autumn. He served at Morrison, Iowa, as a telegraph operator at the time a flood washed out a stretch of track between Morrison and Reinbeck, about five miles in length. He was on duty three days and

three nights without relief, and as a result, he fell asleep on the job. The company found it out, and that ended his career in Morrison. He served in a number of other towns and finally landed in Cedar Rapids. From there he came to Ellsworth in 1906, where he remained until going to Wattertown in 1911. Ellsworth was a booming railroad town then, and Mr. Michell served as yardmaster, one of the toughest jobs in railroad-ing. Considerable amount of livestock was shipped from Ellsworth at that time. He remembers one time a whole trainload of cattle was shipped from there to Liverpool, England. He served in Watertown eight years and then came to Luverne, where he was station agent and operator until his retirement in 1939. Looking back over his 53 years of service, he states, “Railroading really gives a person a good schooling. You learn how to know and how to take people — a matter of fact, you can learn to read their minds. I used to study people, and got so that I could tell what they were going to ask me before they ever spoke a word. The company would send “spies” around to check up on the employees, and I got so I could tell one the minute he began coming down the walk.” Mr. and Mrs. Mitchell became the parents of seven children, all except one of whom are living. They include Lawrence of Minneapolis; Gertrude, of Napa, Calif.; Harold, of Luverne; Dorothy (Mrs. Selmer Bly) Valley Springs; James, who is serving with the army in India and Delmer of Luverne. They have 10 grandchildren and four great grandchildren. He has one living sister, Mrs. Caroline Finney, Hattiesville, Maryland. Mr. Mitchell is a member of the Methodist church, the Masonic Blue Lodge, the Commandery and Eastern Star. He served three years as mayor of the city, and has been on the city council for four years. He attributes his good health and age to just keeping busy, and having good habits. “I can’t remember that I’ve had a doctor more than once in my life,” he states. In addition to wood-working, Mr. Mitchell also keeps bees as a hobby. “It’s not only interesting, but it’s profitable,” he declares.



HOW SWEET IT IS:
THE MUSIC OF JAMES TAYLOR & CARLY SIMON
Saturday, April 1 • 7:00 pm



“GO SEE THIS SHOW!” CBS TV
ARTRAGEOUS!
ELECTRIFYING ART & MUSIC CIRCUS
Friday, April 14 • 7:00pm





DON'T MISS OUT!
MEMORIAL AUDITORIUM PERFORMING ARTS CENTER
www.friendsoftheauditorium.com
714 13th St. Worthington, MN
507-376-9101



SCAN ME

Give Where You Live
today, tomorrow & beyond

 LUVERNE AREA COMMUNITY FOUNDATION

GRANT APPLICATIONS DUE MARCH 31, 2023

Who can apply?

Not-for-profit organizations (either singly or as a consortium), government agencies, academic and research institutions located within Rock County are among the organizations eligible to request support from the Luverne Area Community Foundation.

The Luverne Area Community Foundation invites applications that will enhance the quality of life in the following areas:

- Arts & Humanities •Community & Civic Affairs
- Social & Economic Growth •Nutrition •Environment
- Recreation •Education
- Support Programs - children to senior citizen
- Community Health & Wellness including physical & mental health

How to apply?

APPLY ONLINE AT:
<http://www.luvacf.org/application-information.html>
or contact Emily Crabtree at
507- 220-2424 or emily@luvacf.org

 LUVERNE AREA COMMUNITY FOUNDATION
P.O. Box 623 | 102 E. Main | Luverne, MN | 507-220-2424
Office Hours: T-TH 9:00-12:00 & 1:00-4:00
www.luvacf.org



Join us for an open house

Please be our guest and help us celebrate those who support the mission, vision and values of Sanford Luverne Hospice.

Saturday, April 15
2-4 p.m.
Generations
105 S. Estey St., Luverne, MN

The event will feature an orchestra and light refreshments. We look forward to seeing you there.

**If you have questions, call
(605) 312-5500 for more information.**

SANFORD
HEALTH

797-723-863 03/23

Blue Mound Figure Skaters perform annual ice show

By Greg Hooegeveen

The Blue Mound Figure Skaters performed their 32nd Annual Ice Show, “The ’90s Rewind,” Friday, March 17, and Saturday, March 18, at the Blue Mound Ice Arena.

“Coaches start planning the show theme and details back in August and do a lot of behind-the-scenes work,” said Katie Kopp, BMFS Board member.

“That involves picking music, selecting costumes, choreographing routines, writing the script, adding small details, coordinating ideas with our decorations committee who brings the theme to life.”

She said the show is performed with help from many people involved with BMFS.

“We have 12 instructors, many board members and parent volunteers who put on the production,” Kopp said. “All of our parents volunteer in some capacity.”

The show incorporates over 100 member skaters including their fathers, hockey players

‘The ’90s Rewind’ draws large crowds



and one guest skater.

Special guest skater Paige Schumacher from The National Sports Center performed twice in the show.

“It’s so neat to see our beginner skaters to our high freestyle skaters perform and know where they started and all they’ve learned,” Kopp said.

“The very best part is seeing the excitement on their faces after the shows are all done. It’s such a fun way to end our season.”

She said this year all the coaches are BMFS alumni.

“It was a pretty fun show to reminisce on great memories as we looked back at all the shows,” she said. “1992 was the first year BMFS had an ice show.”

Both shows were well attended with 400 at Friday’s performances despite winter weather.

Saturday’s performances had over 500 in attendance, with many people having to stand for the show.



Greg Hooegeveen photo/0323 Schumacher
Special guest skater Paige Schumacher from The National Sports Center performed twice in this year’s show.



Greg Hooegeveen photo/0323 Papik
Augusta Papik skates solo to “My Heart Will Go On” from the 1997 movie “Titanic” in this year’s ice show.



At top: Tots skaters Lena Langner (left), Destiny Bonilla Soto, and Lucy Almond skate to their Beanie Babies routine March 18 in the Blue Mound Figure Skaters ice show “The ’90s Rewind” at the Blue Mound Ice Arena. Above: The Senior Synchro Team skates to Britney Spears at the March 18 BMFS ice show. Pictured are Emma Schneekloth (left), Augusta Papik, Marisa Thier, Grace Schneekloth, Mara Thier, Josalyn Hiebert, Reese Henning, Katharine Kelm and Hannah Woodley.



Greg Hooegeveen photo/0323 rollerbladers
Second-graders Haidynn Kingery and Braelinn Papik get into the routine in “The ’90s Rewind” ice show.



Greg Hooegeveen photo/0323 Kelm
Senior Katharine Kelm skates to her solo to “Skyfall” at this year’s BMFS ice show at the Blue Mound Ice Arena.

2022-23 Big South All-Conference Team selections announced

Two gymnasts from Luverne High School were named to the 2022-23 Big South Conference Gymnastics All-Conference Team – West Division.

Sophomores Amira Cowell and Ella Reisdorfer were among the 13 athletes named to the team.



Greg Hooegeveen photo/0323 gymn
LHS sophomores Ella Reisdorfer (left) and Amira Cowell were named to the 2022-23 Big South All-Conference gymnastics team.



Greg Hooegeveen photo/0323 ghoc
All-Conference honors went to LHS girls’ hockey players (from left) eighth-grader Tenley Behr, sophomore Payton Behr, senior Kamryn Van Batavia and senior Mallory Nelson.

Four girls’ hockey players from Luverne High School were named to the 2022-23 Big South Conference All-Conference Team.

Senior Kamryn Van Batavia and sophomore Payton Behr were named to the Big South Conference All-Conference Team.

Senior Mallory Nelson and eighth-grader Tenley Behr were named to the Big South Conference All-Conference Honorable Mention Team.

The Luverne Cardinals girls’ hockey team also topped the Big South Conference for the 2022-2023 season with a 14-0-0 record.

Big South/see p.5B

Think spring and recreational vehicles

I took a trip down to Omaha this past weekend to meet some friends, and it only took about 30 minutes to the south of town on that trip to be almost completely snowless.

I still have a drift in my front yard that is over 6 feet tall, and that wasn’t stacked there by a tractor or snow blower. My tender little fruitless flowering crab apple tree has been diagnosed by my tree guy as dead on arrival when spring comes. There is not 3 square inches of bark left on the entire tree that the rabbits didn’t eat.

Winter still has a pretty good grip in southwest Minnesota, but I am told by those in the know that spring will show up sooner or later.

When the weather does finally change, all kinds of fun activities will be made available to those who choose to suffer in a northern climate.

One of those pastimes will be the start of the side-by-side UTV rides I love so much.

My brother decided he was in the market for a used UTV, and he has no experience at all in this marketplace. He reached out to me and was asking for suggestions. Of course, as his little brother I had all kinds of ideas for him to consider.

I think that overall, the



THE OUTDOORS

By Scott Rall, Outdoors columnist

“When the weather does finally change, all kinds of fun activities will be made available to those who choose to suffer in a northern climate.”

recreational vehicle market has changed a ton over the past 10 years. The Polaris Ranger is certainly the dominant provider of these vehicles in our area. I think this has mostly to do with the fact that there are more dealers of Polaris around then other manufacturers.

I have owned two ATVs and six side-by-sides, or UTVs, as they are referred to.

Years ago I was of the mindset that it had to be a Polaris or it was going to be nothing at all. This is no longer the case. There are several other companies in this market now, and they are all fine machines.

You would do fine with either a Polaris, Can Am, Kawasaki, Honda or a John Deere Gator.

Each has its benefits over the competitors.

The first thing I would look for is local service. There is no Polaris dealer in my town so I have to drive 30 miles in about three different directions in order to get it serviced.

If you can do the service yourself, this is less of an issue, but I am not that guy. Sure, I can change the oil and other little stuff, but for the bigger things it is a trailer it to the dealer and drop it off and then go back to work and repeat the process to pick it up when it is finished. Local service is pretty important to me and will bear heavily on my next trade.

What follows is a hash-over of what I think are each brand’s
Think spring/see p.5B

In like a lion and out like a lamb

Perhaps you've heard the old saying that March is "in like a lion and out like a lamb."

This phrase probably originated with the stars in the sky. March begins with the constellation Leo, the lion, rising in the east, and ends with Aries, the ram, setting in the west.

This phrase has also come to represent the dynamic weather of this month. This year, March began with a biting cold that spread like the fierce roar of a lion — complete with more than our fair share of storms. But as the end of the month draws closer, we look forward to the weather changing into a softer, gentler springtime reminiscent of the nature of a lamb.

When the flakes first began to fall, it was beautiful. Few can deny the splendor of the town, the fields, and yes, even the roads covered in a clean, white blanket of snow. The frosted trees sparkled with an almost-magical translucence. People celebrated having a white Christmas. Ice fishers took to the frozen lake, and snowmobilers rejoiced at the chance to hit the trails again.

Yet, before too long, what on the surface looked beautiful and even magical turned out to be dangerous, too. It's all charming until you have to shovel it, plow it, or drive to work in it. The beauty of winter hides the fierceness of its power. I suspect even the most hardened lifelong Minnesotan is now ready to see some green. At first, the lion-like weather was an intriguing change, but now we're ready for the lamb.

The same is happening right now in many churches. The season of Lent, like the

BUILT ON A ROCK

By Pastor Phil Booe,
St. John Lutheran
Church, Luverne

snow, can be both beautiful and biting. The vivid violet paraments and veils, the flickering candles and somber music — few can deny that the church takes on a special beauty during this time of the year.

But always present is also the magnificent Lion of Judah, the King of Kings, Jesus Christ. His beauty, too, hides the fierceness of his power. Lent reminds us that yes, he's the God of love, but he's also just and righteous. It's dangerous for sinners to be in his presence. Hence, why, despite the beauty of Lent, there is penitence, too. He calls us to be perfect, even as our Heavenly Father is perfect. We must admit we are not. Ashamed of our sin, we are ready for change. We repent and look for salvation. We're ready for the Lamb.

As March gives way to April, the Church brings us into Holy Week, where we witness the Lion of Judah, the perfect man, and holy God, willingly laying down his life to save us from our sins. Like a lamb being led to slaughter, Jesus Christ sacrifices himself for us.

This year, as the bitter snow gives way to beautiful new life, let us reflect on the new life we have in Christ. We came in with the Lion, but we'll go out with the Lamb.

As John the Baptist said, "Behold, the Lamb of God, who takes away the sins of the world!"

St. Catherine Catholic Church
203 E. Brown St., Luverne
St. Catherine Ph. 283-8502; www.stscl.org
Monsignor Gerald Kosse, Pastor

Sunday: 8:30 a.m. Mass. Public Mass will be celebrated at FULL capacity in the church. Masses: 9 a.m. Wednesdays, 10 a.m. Friday at the nursing homes — check the bulletin. All Sunday masses will be live streamed on Facebook at <https://www.facebook.com/pg/stccluverne/vid-eos/>. Visit www.stscl.org for more information.

Luverne Christian Reformed Church
605 N. Estey St., Luverne
Office Ph. 283-8482; Prayer Line Ph. 449-5982
www.luverneccrc.com — office@luverneccrc.com
Joe Steenholdt, Pastor

Sunday: 9:30 a.m. Worship service. 6:30 p.m. Evening worship service. We are streaming Sunday services live on YouTube at 9:30 a.m. and 6:30 p.m. Send him a friend request if you're not connected. You may also visit our website for delayed broadcasts. Also our services are on local cable TV at 5:30 p.m. on Wednesdays and at 6:30 p.m. on Thursdays. In all circumstances, may we joyfully declare: "Our help is in the name of the Lord, the Maker of heaven and earth." Psalm 124:8.

First Baptist Church
103 N. Jackson St., P.O. Box 975, Luverne
Ph. 283-4091; email: fbcluv@iw.net — www.fbcluverne.org
Walt Moser, Pastor

Sundays: 10:30 a.m. In-person worship service. Service is also on Facebook Live at 10:30 a.m.

Grace Lutheran Church
500 N. Kniss Ave., Luverne
Ph. 507-283-4431; www.graceluverne.org — graceluverne@iw.net
Dave Christenson, Interim Pastor

Thursday, March 23: 8:30 a.m. Missions in Action. Sunday, March 26: 9 a.m. Worship Service 10 a.m. Fellowship Coffee. 10 a.m. Coffee/Sunday School and Drums. Tuesday, March 28: 7 a.m. Dorcas Circle meeting at The Bean. 8:30 a.m. Grace Notes assembly. 9 a.m. Staff meeting. 3 p.m. Worship at Poplar Creek. Wednesday, March 29: 7 a.m. Men's Bible Study. 5-6:30 p.m. Lenten Supper. 7:30 p.m. Voices if Grace rehearsal. Online, TV and Radio Worship options are available. Online worship: Sundays 9 a.m. at www.graceluverne.org, click Worship tab; or Facebook page at Grace Lutheran ELCA, Luverne. TV: Vast Channel 3 Mondays at 4:30 p.m. and Fridays at 10 a.m. Radio: KQAD-AM Radio Sundays at 8:15 a.m.

Bethany Lutheran Church
720 N. Kniss Ave., Luverne
Ph. 507-283-4571 or 605-215-9834
Andrew Palmquist, Pastor

Sundays: 9 a.m. Sunday School and Bible class. 10:15 a.m. Worship service; worship online as well (at els.org). Tuesdays, 6:30 p.m. Zoom Bible study. Wednesdays, 7 p.m. Lenten Vespers. See our Facebook page, Bethany Lutheran Church (Luverne) for other classes and events.

American Reformed Church
304 N. Fairview Dr., Luverne
Ph. 507-283-8600; email: office@arcluverne.org

Friday, March 24: 6:30 a.m. Community Men's Bible Study. Sunday, March 26: 9:30 a.m. Worship Service. 10:50 a.m. Sunday School. 2-4 p.m. Middle School Gathering. Monday, March 27: 6:30 p.m. VBS work night. Tuesday, March 28: 12 p.m. Staff meeting. Wednesday, March 29: 5:30 p.m. Midweek meal. 6:30 p.m. Pioneer Clubs and Youth Groups. Thursday, March 30: 9 a.m. Cookie Crew. CommServices are also broadcast on Vast Channel 3 on Mondays at 6 p.m. and Wednesdays at 4 p.m. DVD's available upon request. To stay up to date on announcements, follow us on Facebook and Instagram @arcluverne.

Rock River Community Church
1075 110th Ave., Luverne
Ph. 507-283-9070; email: info@rockrivercommunity.church
Bob Junak, Pastor

Come as you are — Sundays @ 10 a.m.: Main Service. Kids church age 3-6th grade — Nursery. Wednesdays @ 6:30 p.m. Midweek Service — Kids age 3-6th grade.

United Methodist Church
109 N. Freeman Ave., Luverne
Ph. 283-4529

Saturday, March 25: 8 p.m. AA meeting. Sunday, March 26: 9 a.m. Coffee hour and Adult Sunday School. 10:30 a.m. Worship Service. 4:30 p.m. Genesis/Revelation Bible Study. Monday, March 27: 6:30 p.m. Genesis to Revelation Bible Study. Tuesday, March 28: 9:30 a.m. Folding Team. 1:30 p.m. Sewn in Faith. 7 p.m. Scouts. Wednesday, March 29: 9 a.m. — 7 p.m. Prayer Chapel. 6:15 p.m. FUEL. 6:30 p.m. Confirmation. 7 p.m. Lenten Service. 8 p.m. AA meeting. Bishop Women's Gathering. Live streamed on Facebook and radio.

First Presbyterian Church
302 Central Lane, Luverne
Ph. 283-2131; email: fpcemilie@gmail.com

Wednesday, March 22: 5:30 p.m. Bell Choir. 6 p.m. Chancel Choir. 7 p.m. Lenten Service at First Presbyterian Church. Sunday, March 26: 9 a.m. Adult Sunday School — topic: Dementia. 10:15 a.m. In-person Worship Service (View on Facebook under First Presbyterian Church of

Luverne, City of Luverne's LUV TV or on the local Luverne cable station at 10 a.m. and 6 p.m. on Tuesdays and 10 a.m. on Thursdays), Youth Sunday School during Worship. Monday, March 27: 9 a.m.-12 p.m. Quilting. Wednesday, March 29: 5:30 p.m. Bell Choir. 6 p.m. Chancel Choir. 6:15-8 p.m. Senior Highs. 7 p.m. Lenten Service at United Methodist Church. We are also on the local Luverne cable station at 10 a.m. and 6 p.m. on Tuesdays and 10 a.m. on Thursdays.

St. John Lutheran Church
803 N. Cedar St., Luverne
Ph. 283-2316; email: stjohn@iw.net
www.stjohnlutheranluverne.org

Saturdays: 5:30 p.m. Worship Service. Sundays: 9 a.m. Worship Service. 10 a.m. Fellowship Time. 10:15 a.m. Sunday School. 10:15 a.m. Adult Bible Study. Wednesdays: 9 a.m. Bible Study. 6:30 p.m. Catechesis Class. 6:30 p.m. Kids for Christ. 7:30 p.m. Youth Group. Services will be available on the Vast Channel 3 Sunday and online at the city website, cityofluverne.org. Holy Communion is offered on 2nd and 4th weekends and Liturgical Feasts.

Living Rock Church
500 E. Main St., Luverne
Ph. 449-0057; www.livingrockswmn.org
Josh Hayden, Pastor

New Life Celebration Church
101 W. Maple, Luverne
Ph. (605) 368-1924; email: newlifecelebration@gmail.com

Zion Evangelical Lutheran Church
305 E. 2nd St., P.O. Box 36, Hardwick
Ph. (507) 669-2855; zionoffice@alliancecom.net
Jesse Baker, Pastor

Sundays: 9 a.m. Worship service. 10:15 a.m. Sunday School. 10:30 a.m. Bible study. Worship service on Luverne cable at 3:30 p.m. every Thursday and Friday.

Ben Clare United Methodist Church
26762 Ben Clare Ave., Valley Springs, S.D.
igtwb@WOW.net
Bill Bates, Pastor

First Lutheran Church
300 Maple St., Valley Springs, S.D.
Ph. (605) 757-6662 — firstpalisade@alliancecom.net
Mark Eliason, Pastor

Sunday, March 26: 10:30 a.m. Worship at First Lutheran Church. 9:30 a.m. Sunday School. Wednesday, March 29: 7 p.m. Lenten Service at Palisade Lutheran Church. All are welcome. We Are ONLINE! Facebook: @FirstLutheranValley Springs; YouTube: FirstPalisadeLutheranParish.

Palisade Lutheran Church
211 121st St., Garretson, S.D.
Ph. (507) 597-6257 — palisadechurch@alliancecom.net
www.palisadelutheran.org

Sunday, March 26: 9 a.m. Worship Service at Palisade Lutheran Church. 10 a.m. Sunday School. Wednesday, March 29: 7 p.m. Lenten service at Palisade Lutheran Church. We Are ONLINE! Facebook: @PalisadeLC; YouTube: FirstPalisadeLutheranParish.

First Presbyterian Church
201 S. 3rd St., P.O. Box 73, Beaver Creek
Ph. 507-935-5025

email: lori.firstpres@gmail.com

Sundays: 9:30 a.m. Worship Service. Second Tuesday of each month, 7 p.m. Session meeting.

Magnolia United Methodist Church
501 E. Luverne St., Magnolia
Ph. 605-215-3429

email: magnoliannumc@gmail.com

Nancy Manning, Pastor

Sundays: 9 a.m., in-person with livestream available on the church's Facebook site.

Steen Reformed Church
112 W. Church Ave., Steen
Ph. 855-2336

Jeremy Wiersema, Pastor

Sundays: 9:30 a.m. and 6 p.m. Worship service in-person with livestream available on Facebook and YouTube. Radio worship on KQAD Sundays at 9:30 a.m.

Bethlehem Lutheran Church
112 N. Main St., Hills
Ph. 962-3270 / bethlehemofhills@gmail.com
Nita Parker, Pastor

Sundays: 9 a.m. Worship at Tuff Chapel. 9 a.m. Sunday school. 10 a.m. Worship Service. Worship will be streamed live to Facebook at Bethlehem of Hills. You can find more info on our website blchills.org.

Hills United Reformed Church
410 S. Central Ave., Hills
Office Ph. 962-3254
hillsurc@alliancecom.net
Alan Camarigg, Pastor

These weekly church page messages are contributed to God's Work through the Church and by these concerned and responsible citizens & businesses:

Call Rick to place your ad!

283-2333

Read us online!

Rock County
STAR HERALD
www.Star-Herald.com

Trust in Him



Papik Motors
283-9171
PAPIK.COM
Luverne • Rock Rapids • Sibley

HILLS STAINLESS STEEL & EQUIPMENT CO., INC.
506 W. Koehn, P.O. Box 987, Luverne, MN
PHONE 507-283-4405
Church is Important - Please Attend!

Buffalo Ridge Insurance
507-283-2381 www.buffaloridgeins.com E-mail: info@buffaloridgeins.com

McClure Electric
Alan M. Aanenson, owner
Farm, Home & Commercial Wiring
Luverne, MN Phone 507-283-4716

TUFF MEMORIAL HOME
A HOME WITH A HEART!
Hills, MN • 507-962-3275

MINNWEST BANK
116 East Main Street • Luverne • 507-283-2366
Hwy. 75 • 800 South Kniss • Luverne • 507-283-9131
www.minnwestbank.com • Member FDIC • MoneyLine 888-616 BANK

Advertise
Here

SECURITY SAVINGS BANK
bankwithssb.com 507.449.6000
Member FDIC Luverne, MN

HARTQUIST
Funeral and Cremation Services
Pipestone • Luverne • Lake Benton • Jasper • Tyler
www.HartquistFuneral.com

Pizza Ranch
110 E Main, Luverne 507-283-2379

CWG Business Insurance.
Tri-State Region Period!

MANLEY TIRE & OIL SERVICE
Manley Minnesota
1-800-615-3704
Open six days a week • Closed on Sundays
To God be the Glory.

Luverne ANNOUNCER

First Farmers & Merchants
We believe in you.
Member FDIC. And the community.
303 E. Main, Luverne, MN
507-283-4463 | www.ffmbank.com

Mortgage foreclosure sale set for Feb. 23, 2023

NOTICE OF MORTGAGE FORECLOSURE SALE
THE RIGHT TO VERIFICATION OF THE DEBT AND IDENTITY OF THE ORIGINAL CREDITOR WITHIN THE TIME PROVIDED BY LAW IS NOT AFFECTED BY THIS ACTION.

NOTICE IS HEREBY GIVEN, that default has occurred in the conditions of the following described mortgage:

Mortgagor: Mannuel Olson, A Single Person
Mortgagee: Mortgage Electronic Registration Systems, Inc., as mortgagee, as nominee for Reliabank Dakota, its successors and assigns
Dated: September 25, 2018
Recorded: September 27, 2018
Rock County Recorder Document No. 193501
Assigned To: Citizens Bank, N.A.
Dated: October 14, 2020
Recorded: October 15, 2020
Rock County Recorder Document No. 198166
Transaction Agent: Mortgage Electronic Registration Systems, Inc.
Transaction Agent Mortgage Identification Number: 101134900000029609
Lender or Broker: Reliabank Dakota, a Corporation
Residential Mortgage Servicer: Citizens Bank
Mortgage Originator: Reliabank Dakota, a Corporation

LEGAL DESCRIPTION OF PROPERTY: LOT 2 IN BLOCK 2 IN AUDITOR'S PLAT NO. 2 IN THE SW 1/4 OF SECTION 2 IN TOWNSHIP 102 NORTH OF RANGE 45 WEST OF THE 5TH PM, ROCK COUNTY, MINNESOTA.

This is Abstract Property.

TAX PARCEL NO.: 20-0215-000
ADDRESS OF PROPERTY:
728 N Estey St
Luverne, MN 56156
COUNTY IN WHICH PROPERTY IS LOCATED: Rock
ORIGINAL PRINCIPAL AMOUNT OF MORTGAGE: \$85,877.00
AMOUNT DUE AND CLAIMED TO BE DUE AS OF DATE OF NOTICE: \$102,709.00

That prior to the commencement of this mortgage foreclosure proceeding Mortgagee/Assignee of Mortgagee complied with all notice requirements as required by statute; that no action or proceeding has been instituted at law or otherwise to recover the debt secured by said mortgage, or any part thereof;

PURSUANT to the power of sale contained in said mortgage, the above described property will be sold by the Sheriff of said county as follows:

DATE AND TIME OF SALE: February 23, 2023, 10:00 A.M.
PLACE OF SALE: Lobby of Rock County Law Enforcement Center, 1000 N Blue Mound Ave, Luverne, MN

to pay the debt then secured by said Mortgage, and taxes, if any, on said premises, and the costs and disbursements, including attorneys' fees allowed by law subject to redemption within 6 Months from the date of said sale by the mortgagor(s), their personal representatives or assigns.

DATE TO VACATE PROPERTY: The date on or before which the mortgagor must vacate the property if the mortgage is not reinstated under Minnesota Statutes section 580.30 or the property redeemed under Minnesota Statutes section 580.23 is August 23, 2023 at 11:59 p.m. If the foregoing date is a Saturday, Sunday or legal holiday, then the date to vacate is the next business day at 11:59 p.m.

MORTGAGOR(S) RELEASED FROM FINANCIAL OBLIGATION ON MORTGAGE: NONE

THE TIME ALLOWED BY LAW FOR REDEMPTION BY THE MORTGAGOR, THE MORTGAGOR'S PERSONAL REPRESENTATIVES OR ASSIGNS, MAY BE REDUCED TO FIVE WEEKS IF A JUDICIAL ORDER IS ENTERED UNDER MINNESOTA STATUTES SECTION 582.032, DETERMINING, AMONG OTHER THINGS, THAT THE MORTGAGED PREMISES ARE IMPROVED WITH A RESIDENTIAL DWELLING OF LESS THAN FIVE UNITS, ARE NOT PROPERTY USED IN AGRICULTURAL PRODUCTION, AND ARE ABANDONED.

Dated: December 21, 2022

Citizens Bank, N.A., Assignee of Mortgagee
By: HALLIDAY, WATKINS & MANN, P.C.
Attorneys for:
Citizens Bank, N.A., Assignee of Mortgagee
1333 Northland Drive, Suite 205
Mendota Heights, MN 55120
801-355-2886
651-228-1753 (fax)

THIS COMMUNICATION IS FROM A DEBT COLLECTOR ATTEMPTING TO COLLECT A DEBT. ANY INFORMATION OBTAINED WILL BE USED FOR THAT PURPOSE.
MN21097.

(12-29, 01-05, 01-12, 01-19, 01-26, 02-02)

Notice of postponement of mortgage foreclosure sale

NOTICE IS HEREBY GIVEN, that the above Mortgage Foreclosure Sale is hereby postponed to March 15, 2023, at 10 a.m., Lobby at Rock County Law Enforcement Center, 1000 N. Blue Mound Ave., Luverne, MN in said County and State.

Dated: February 28, 2023

By: Halliday, Watkins & Mann, P.C.
Attorneys for:
Citizens Bank, N.A., Assignee of Mortgagee
1333 Northland Drive, Suite 205
Mendota Heights, MN 55120
801-355-2886
MN21097

(03-09)

Notice of postponement of mortgage foreclosure sale

NOTICE IS HEREBY GIVEN, that the above Mortgage Foreclosure Sale is hereby postponed to April 6, 2023, at 10 a.m., Lobby at Rock County Law Enforcement Center, 1000 N. Blue Mound Ave., Luverne, MN in said County and State.

Dated: March 17, 2023

By: Halliday, Watkins & Mann, P.C.
Attorneys for:
Citizens Bank, N.A., Assignee of Mortgagee
1333 Northland Drive, Suite 205
Mendota Heights, MN 55120
801-355-2886
MN21097

(03-23)

Mortgage foreclosure sale set for May 25

NOTICE OF MORTGAGE FORECLOSURE SALE
NOTICE IS HEREBY GIVEN, that default has occurred in the conditions of that certain Mortgage, dated May 3, 2018, executed by Randy L. Hamm and Gina L. Hamm, husband and wife, as Mortgagors, to First State Bank Southwest, organized and existing under the laws of Minnesota, as Mortgagee, filed with the Rock County Recorder on May 9, 2018, as Document No. 192638;

That no action or proceeding has been instituted at law to recover the debt secured by said mortgage, or any part thereof; that there has been compliance with all notice provisions and conditions precedent as required by law; and that the mortgagee or assignee has elected to declare the entire sum secured by the note and mortgage to be immediately due and payable as provided in the note and mortgage;

That the original or maximum principal amount secured by the mortgage was Two Hundred Twenty-Five Thousand and No/100 DOLLARS (\$225,000.00);

That there is due and claimed to be due on the mortgage, including interest to date hereof, the sum of One Hundred Eighty-Nine Thousand Six Hundred Thirty-Eight and 83/100 DOLLARS (\$189,638.83);

And that pursuant to the power of sale therein contained, said mortgage will be foreclosed and the tract of land lying and being in the County of Rock, State of Minnesota, described as follows, to-wit:

The North Five Hundred Fifty-five (N 555) feet of the West Four Hundred Seventy-five (W 475) feet of the Northwest Quarter (NW 1/4) of Section Twenty-three (23), Township One Hundred Four (104) North, Range Forty-four (44) West of the 5th P.M., Rock County, Minnesota.

Property address: 1912 221st St., Edgerton, MN 56128.

Parcel identification number: 01-0098-000.

will be sold by the sheriff of said county at public auction on the 25th day of May, 2023, at 10:00 o'clock a.m., at the Rock County, Minnesota, Sheriff's Office located at 1000 North Blue Mound Avenue in the City of Luverne, in said county and state, to pay the debt then secured by said mortgage on said premises and the costs and disbursements allowed by law, subject to redemption by the mortgagor, their personal representative or assigns within six (6) months from date of sale.

TIME AND DATE TO VACATE PROPERTY: If the real estate is an owner-occupied, single-family dwelling, unless otherwise provided by law, the date on or before which the mortgagor(s) must vacate the property if the mortgage is not reinstated under Section 580.30 or the property is not redeemed under Section 580.23 is 11:59 p.m. on November 25, 2023.

THE TIME ALLOWED BY LAW FOR REDEMPTION BY THE MORTGAGOR, THE MORTGAGOR'S PERSONAL REPRESENTATIVES OR ASSIGNS, MAY BE REDUCED TO FIVE WEEKS IF A JUDICIAL ORDER IS ENTERED UNDER MINNESOTA STATUTES, SECTION 582.032, DETERMINING, AMONG OTHER THINGS, THAT THE MORTGAGED PREMISES ARE IMPROVED WITH A RESIDENTIAL DWELLING OF LESS THAN FIVE UNITS, ARE NOT PROPERTY USED IN AGRICULTURAL PRODUCTION, AND ARE ABANDONED.

Transaction agent: N/A.

Transaction agent's Mortgage identification number: N/A.

Mortgage originator: First State Bank Southwest.

THIS COMMUNICATION IS FROM A DEBT COLLECTOR ATTEMPTING TO COLLECT A DEBT. ANY INFORMATION OBTAINED WILL BE USED FOR THAT PURPOSE. THE RIGHT TO VERIFICATION OF THE DEBT AND IDENTITY OF THE ORIGINAL CREDITOR WITHIN THE TIME PROVIDED BY LAW IS NOT AFFECTED BY THIS ACTION.

Dated this 13th day of March, 2023

First State Bank Southwest, Mortgagee

/s/ Michael S. Dove

Michael S. Dove #214310

GISLASON & HUNTER LLP

2700 South Broadway

P. O. Box 458

New Ulm, MN 56073-0458

Phone: 507-354-3111

Fax: 507-354-8447

Attorneys for Mortgagee

(03-23, 03-30, 04-06, 04-13, 04-20, 04-27)

Mortgage foreclosure sale set for April 27, 2023

NOTICE OF MORTGAGE FORECLOSURE SALE
NOTICE IS HEREBY GIVEN that default has occurred in the conditions of the following described mortgage:

DATE OF MORTGAGE: February 9, 2012

ORIGINAL PRINCIPAL AMOUNT OF MORTGAGE: \$240,000.00

MORTGAGOR(S): Justin Birger, Her Husband and Laressa Birger, His Wife
MORTGAGEE: Mortgage Electronic Registration Systems, Inc., as mortgagee,

as nominee for Dacotah Bank, its successors and assigns

DATE AND PLACE OF RECORDING:

Recorded: February 21, 2012 Rock County Recorder

Document Number: 178607

ASSIGNMENTS OF MORTGAGE:

And assigned to: Colonial Savings, F.A.

Dated: January 19, 2017

Recorded: February 13, 2017 Rock County Recorder

Document Number: 190119

Transaction Agent: Mortgage Electronic Registration Systems, Inc.

Transaction Agent Mortgage Identification Number: 100793500000021541

Lender/Broker/Mortgage Originator: Dacotah Bank

Residential Mortgage Servicer: Colonial Savings, FA

COUNTY IN WHICH PROPERTY IS LOCATED: Rock

Property Address: 302 E 7th St, Hills, MN 56138

Tax Parcel ID Number: 15-0316-000

LEGAL DESCRIPTION OF PROPERTY: Lot Three (3) and Four (4) in Block Two (2) of Parkview Second Addition to the City of Hills, Rock County, Minnesota

AMOUNT DUE AND CLAIMED TO BE DUE AS OF DATE OF NOTICE: \$196,278.85

THAT all pre-foreclosure requirements have been complied with; that no action or proceeding has been instituted at law or otherwise to recover the debt secured by said mortgage, or any part thereof; that this is registered property;

PURSUANT to the power of sale contained in said mortgage, the above-described property will be sold by the Sheriff of said county as follows:

DATE AND TIME OF SALE: April 27, 2023, at 10:00 A.M.

PLACE OF SALE: County Sheriff's office, in the lobby of the Rock County Law Enforcement Center, 1000 N. Blue Mound Avenue, Luverne, Minnesota

to pay the debt secured by said mortgage and taxes, if any, on said premises and the costs and disbursements, including attorney fees allowed by law, subject to redemption within six (6) months from the date of said sale by the mortgagor(s), their personal representatives or assigns.

If the Mortgage is not reinstated under Minn. Stat. §580.30 or the property is not redeemed under Minn. Stat. §580.23, the Mortgagor must vacate the property on or before 11:59 p.m. on October 27, 2023, or the next business day if October 27, 2023 falls on a Saturday, Sunday or legal holiday.

Mortgagor(s) released from financial obligation: NONE

THIS COMMUNICATION IS FROM A DEBT COLLECTOR ATTEMPTING TO COLLECT A DEBT. ANY INFORMATION OBTAINED WILL BE USED FOR THAT PURPOSE.

THE RIGHT TO VERIFICATION OF THE DEBT AND IDENTITY OF THE ORIGINAL CREDITOR WITHIN THE TIME PROVIDED BY LAW IS NOT AFFECTED BY THIS ACTION.

THE TIME ALLOWED BY LAW FOR REDEMPTION BY THE MORTGAGOR, THE MORTGAGOR'S PERSONAL REPRESENTATIVES OR ASSIGNS, MAY BE REDUCED TO FIVE WEEKS IF A JUDICIAL ORDER IS ENTERED UNDER MINNESOTA STATUTES, SECTION 582.032, DETERMINING, AMONG OTHER THINGS, THAT THE MORTGAGED PREMISES ARE IMPROVED WITH A RESIDENTIAL DWELLING OF LESS THAN FIVE UNITS, ARE NOT PROPERTY USED IN AGRICULTURAL PRODUCTION, AND ARE ABANDONED.

DATED: March 1, 2023

MORTGAGEE: Colonial Savings, F.A.

Wilford, Geske & Cook, P.A.

Attorneys for Mortgagee

7616 Currell Boulevard, Suite 200

Woodbury, MN 55125

651-209-3300

File Number: 050335-F2

(03-09, 03-16, 03-23, 03-30, 04-06, 04-13)

Rock County Planning and Zoning hearing set for March 27

Notice of Public Hearing for Conditional Use Permit
Pursuant to the Rock County Zoning Ordinance, notice is hereby given by the Rock County Planning and Zoning Commission that a public hearing will be held at the Rock County Law Enforcement Center located at 1000 North Blue Mound Avenue, Luverne, Minnesota at 7:00 p.m Monday, March 27, 2023. The purpose of this hearing is to rule on the applications for Conditional Use Permits as listed in this notice:

Applicant:	Duininck, Inc.
Location:	A portion of the SE 1/4 of Section 15 of Luverne Township, T102N, R45W, Rock County, Minnesota
Conditional Use:	Placement and operation of a temporary asphalt plant
Zoning District:	A-2, General Agriculture
Applicant:	Duininck, Inc.
Location:	Portions of Section 14 & 11 of Denver Township, T104N, R45W, Rock County, Minnesota
Conditional Use:	Aggregate rock quarry mining, stockpiling, washing, and associated processing
Zoning District:	A-2, General Agriculture
Applicant:	Duininck, Inc.
Location:	Portions of Section 14 & 11 of Denver Township, T104N, R45W, Rock County, Minnesota
Conditional Use:	Placement and operation of a temporary asphalt plant
Zoning District:	A-2, General Agriculture
Applicant:	Duininck, Inc.
Location:	Portions of the SW 1/4 of Section 21 of Battle Plain Township, T104N, R44W, Rock County, Minnesota
Conditional Use:	Aggregate mining, stockpiling, washing, and associated processing, and the stockpiling and recycling of concrete and asphalt
Zoning District:	A-2, General Agriculture
Applicant:	Duininck, Inc.
Location:	Portions of the SW 1/4 of Section 21 of Battle Plain Township, T104N, R44W, Rock County, Minnesota
Conditional Use:	Placement and operation of a temporary hot mix asphalt plan
Zoning District:	A-2, General Agriculture

By Order of the Rock County Planning and Zoning Commission
Eric Hartman, Zoning Administrator

311 W. Gabrielson Road
Luverne, MN 56156
507-283-8862

(03-16, 03-23)

Bauman probate

STATE OF MINNESOTA	PROBATE COURT
COUNTY OF ROCK	DISTRICT COURT
	PROBATE DIVISION
In Re: Estate of Dallas Dale Bauman, a/k/a Dallas D. Bauman, a/k/a Dallas Bauman, Deceased	Court File No. 67-PR-23-52 ORDER AND NOTICE OF HEARING FOR FORMAL PROBATE OF WILL AND APPOINTMENT OF PERSONAL REPRESENTATIVE IN SUPERVISED ADMINISTRATION AND NOTICE TO CREDITORS

TO ALL INTERESTED PERSONS AND CREDITORS:

It is Ordered and Notice is hereby given that on the 3rd day of April, 2023, at 8:30 O'clock A.M., a hearing will be held in the above named Court at Rock County Courthouse, Luverne, Minnesota, for the formal probate of an instrument purporting to be the will of the above named deceased, dated December 2, 2022, and for the appointment of David James Goedken, whose address is 28413 Bulick Avenue, Adrian, Minnesota 56110, as personal representative of the estate of the above named decedent in supervised administration, and that any objections thereto must be filed with the Court. That, if proper, and no objections are filed, said personal representative will be appointed to administer the estate, to collect all assets, pay all legal debts, claims, taxes and expenses, and sell real and personal property, and do all necessary acts for the estate. Upon completion of the administration, the representative shall file a final account for the allowance and shall distribute the estate to the persons thereto entitled as ordered by the Court, and close the estate.

Notice is further given that ALL CREDITORS having claims against said estate are required to present the same to said personal representative or to the Court Administrator within four months after the date of this notice or said claims will be barred.

Date Filed: March 6, 2023	/s/ Terry S. Vajrt District Court Judge
Jennifer L. Eisma-Reinke Attorney for Petitioner Eisma and Eisma 130 East Main Luverne, MN 56156 (507) 283-4828 I.D. #389457	/s/ Natalie Reisch Court Administrator (COURT SEAL) (03-16, 03-23)

Luke probate

STATE OF MINNESOTA	PROBATE COURT
COUNTY OF ROCK	DISTRICT COURT
	PROBATE DIVISION
In Re: Estate of Duane A. Luke, a/k/a Duane Luke, Deceased	Court File No. 67-PR-23-55 ORDER AND NOTICE OF HEARING FOR FORMAL PROBATE OF WILL AND APPOINTMENT OF PERSONAL REPRESENTATIVE IN SUPERVISED ADMINISTRATION AND NOTICE TO CREDITORS

TO ALL INTERESTED PERSONS AND CREDITORS:

It is Ordered and Notice is hereby given that on the 10th day of April, 2023, at 8:30 O'clock a.m., a hearing will be held in the above named Court at Rock County Courthouse, Luverne, Minnesota, for the formal probate of an instrument purporting to be the will of the above named deceased, dated October 22, 2013, and for the appointment of Todd Luke whose address is 814 N. Cedar St., Luverne, Minnesota 56156, as personal representative of the estate of the above named decedent in supervised administration, and that any objections thereto must be filed with the Court. That, if proper, and no objections are filed, said personal representatives will be appointed to administer the estate, to collect all assets, pay all legal debts, claims, taxes and expenses, and sell real and personal property, and do all necessary acts for the estate. Upon completion of the administration, the representative shall file a final account for the allowance and shall distribute the estate to the persons thereto entitled as ordered by the Court, and close the estate.

Notice is further given that ALL CREDITORS having claims against said estate are required to present the same to said personal representative or to the Court Administrator within four months after the date of this notice or said claims will be barred.

Date Filed: March 8, 2023	/s/ Terry S. Vajrt District Court Judge
Douglas E. Eisma Attorney for Petitioner Eisma and Eisma 130 East Main Luverne, MN 56156 (507) 283-4828 I.D. #158343	/s/ Natalie Reisch Court Administrator (COURT SEAL) (03-16, 03-23)

Star Herald PUBLIC NOTICES

Notice of special election for ISD #671 on April 11

NOTICE OF SPECIAL ELECTION
INDEPENDENT SCHOOL DISTRICT NO. 671
(HILLS-BEAVER CREEK)
STATE OF MINNESOTA

NOTICE IS HEREBY GIVEN that a special election has been called and will be held in and for Independent School District No. 671 (Hills-Beaver Creek), State of Minnesota, on Tuesday, April 11, 2023, for the purpose of voting on the following questions:

School District Question 1 Approval of School District Bond Issue

☐ **Yes**

☐ **No**

Shall the school board of Independent School District No. 671 (Hills-Beaver Creek) be authorized to issue its general obligation school building bonds in an amount not to exceed \$26,500,000 to provide funds for the acquisition and betterment of school sites and facilities, including the construction and equipping of a new Pre-K-5 elementary school; and the decommissioning of the existing elementary school?

BY VOTING "YES" ON THIS BALLOT QUESTION, YOU ARE VOTING FOR A PROPERTY TAX INCREASE.

School District Question 2 Approval of School District Bond Issue

☐ **Yes**

☐ **No**

If School District Question 1 is approved, shall the school board of Independent School District No. 671 (Hills-Beaver Creek) also be authorized to issue its general obligation school building bonds in an amount not to exceed \$3,475,000 to provide funds for the acquisition and betterment of school sites and facilities, including the decommissioning of a portion of the former Hills-Beaver Creek Secondary School; the construction of upgrades and improvements to the gymnasium, locker rooms, and parking lots at that site; the construction of a parking lot expansion at the current High School/Middle School site; and remodeling and upgrades to the bus garage facility?

BY VOTING "YES" ON THIS BALLOT QUESTION, YOU ARE VOTING FOR A PROPERTY TAX INCREASE.

The combined polling places for this election and the precincts served by those polling places will be as follows:
COMBINED POLLING PLACE: Beaver Creek City Offices
311 E. 1st Avenue
Beaver Creek, MN 56116

This combined polling place serves all territory located in Independent School District No. 671 located in Beaver Creek Township; Springwater Township; the City of Beaver Creek; Rock County, Minnesota.
COMBINED POLLING PLACE: Hills American Legion
207 South Main Ave.
Hills, MN 56138

This combined polling place serves all territory in Independent School District No.671 located in Martin Township; Clinton Township; the City of Steen; the City of Hills; Rock County, Minnesota.
Any eligible voter residing in the School District may vote at said election at the combined polling places designated above for the precinct in which he or she resides. The polls for said election will be opened at 7:00 o'clock a.m. and will close at 8:00 o'clock p.m. on the date of said election.
A voter must be registered to vote to be eligible to vote in this election. An unregistered individual may register to vote at the combined polling place on election day

Dated: January 23, 2023

BY ORDER OF THE SCHOOL BOARD
/s/
School District Clerk
Independent School District No. 671
(Hills-Beaver Creek)
State of Minnesota
(03-23, 03-30)

H-BC School Board meets Feb. 27

Hills-Beaver Creek Dist. 671
Minutes
Feb. 27, 2023

The Hills-Beaver Creek School Board met for its semi-monthly meeting at 7:05 p.m. in the H-BC Secondary School Board room, 301 N Summit Ave, Hills, MN.

Board members and Administration present were Bosch, Harnack, Helgeson, Rauk, Rozeboom and Uittenbogaard. Superintendent Holthaus and Business Manager Rozeboom were also in attendance. Board member Gehrke and Principal Kellenberger were absent.

Motion by Rozeboom, second by Harnack, and carried to approve the agenda.
No Visitors.

PATRIOT PRIDE:
-Bus Driver Appreciation Day - 2/22
-National FFA Week 2/21-2/24
-Read Across America Day March 2
-Section Basketball Girls 2/25 and Boys 3/4
-National Public School Week 2/27-3/3

Committee Reports/Updates:
-Personnel/Finance Meeting - 2/13, MSHSL Meeting 2/15
Motion by Harnack, second by Helgeson, and carried to approve Consent Agenda:
-Minutes—2/13/2023
-Bills
-Imprest Cash Report
-Treasurer Report -Student Accounts Report
Motion by Helgeson, second by Uittenbogaard, and carried to approve
Revised District Budget Income and Expenses for Fiscal Year 2023
Motion by Rauk, second by Harnack, and carried to approve Southwest West Central Service Cooperative 2023-2024

Contract
DISTRICT NON-ACTION ITEMS:
•Superintendent/Elementary Principal Report
•Legislative Update - Rozeboom

AGENDA ITEMS FOR THE NEXT REGULARLY SCHEDULED MEETING
DATES TO REMEMBER:
Regular Board Meeting, Monday, February 27
Regular Board Meeting, Monday, March 13

ENTER CLOSED SESSION
Motion by Rozeboom, second by Rauk, and carried to approve entering closed session for the purposes of developing or considering offers or counteroffers for the purchase or sale of real property, pursuant to Minnesota Statutes Section 13D.05, subdivision 3(c)(3). The real property is described as: The East half (E 1/2) of the Southwest quarter (SW 1/4) of the Northeast quarter NE 1/4) of Sec. 28, TWP 102 Range 46 West of the 5th P.M.; [contains approximately 20 acres] All of Block Twenty (20) and the following lots in Block Twenty-nine (29): all of Lots 1,2,3,4,5,6,7, the South 40.5 feet of Lot 8, all of Lots 12, 13, 14, First Addition, City of Beaver Creek, Minnesota, [contains approximately 5.68 acres] Blocks ten (10) and (19), Original Plat, City of Beaver Creek, Minnesota [contains approximately 4.96 acres] City of Beaver Creek First Addition Lots 5 Thru 12 Block 23 & All of Blocks 24, 25 & 26
City of Beaver Creek Crawford's Addition Blocks 3-4-5-& 6
City of Beaver Creek Outlot 6-7-8-9-10-11-12-13-14
City of Beaver Creek, MN Spring Brook Addition Parcels-13-0127-000-13-0132-000
City of Beaver Creek, MN Block 5 Spring Brook Addition, Parcel 13-0154-000 The W 1/2 of the NW 1/4 of Section 2, Township 101N, Range 46W, of the 5th P.M., Rock County, Minnesota, Except the North 720 feet of the East 605 feet of the West 1325 feet.

RECONVENE FROM CLOSED SESSION
Motion by Rozeboom, second by Uittenbogaard, and carried to approve adjournment of meeting.
Time of Adjournment: 8:18 p.m.

Tamara Rauk, Clerk
(03-23)

Mortgage foreclosure sale set for April 21

NOTICE OF MORTGAGE FORECLOSURE SALE
THE RIGHT TO VERIFICATION OF THE DEBT AND IDENTITY OF THE ORIGINAL CREDITOR WITHIN THE TIME PROVIDED BY LAW IS NOT AFFECTED BY THIS ACTION.

NOTICE IS HEREBY GIVEN that default has occurred in the conditions of the following described mortgage:
DATE OF MORTGAGE: June 24, 2021
ORIGINAL PRINCIPAL AMOUNT OF MORTGAGE: \$78,780.00
MORTGAGOR(S): Noah D. Meyer, a single person
MORTGAGEE: Mortgage Electronic Registration Systems, Inc.
TRANSACTION AGENT: Mortgage Electronic Registration Systems, Inc.
MIN#: 1005210-0808093166-7
LENDER OR BROKER AND MORTGAGE ORIGINATOR STATED ON THE MORTGAGE: Plains Commerce Bank
SERVICER: PennyMac Loan Services, LLC
DATE AND PLACE OF FILING: Filed June 30, 2021, Rock County Recorder, as Document Number 200387
ASSIGNMENTS OF MORTGAGE: Assigned to: PennyMac Loan Services, LLC
LEGAL DESCRIPTION OF PROPERTY:
The South Sixty (S 60) feet of Lot Five (5) in Block Three (3) in Barck, Adams, and Howe's Addition to the City of Luverne, Rock County, Minnesota.
PROPERTY ADDRESS: 703 N Spring Street, Luverne, MN 56156
PROPERTY IDENTIFICATION NUMBER: 20-0258-000
COUNTY IN WHICH PROPERTY IS LOCATED: Rock
THE AMOUNT CLAIMED TO BE DUE ON THE MORTGAGE ON THE DATE OF THE NOTICE: \$87,487.88
THAT all pre-foreclosure requirements have been complied with; that no action or proceeding has been instituted at law or otherwise to recover the debt secured by said mortgage, or any part thereof;
PURSUANT, to the power of sale contained in said mortgage, the above described property will be sold by the Sheriff of said county as follows:
DATE AND TIME OF SALE: April 21, 2023, 10:00 A.M.
PLACE OF SALE: Sheriff's Main Office, West Side Sheriff Dept, Front Step, Luverne, MN 56156

to pay the debt secured by said mortgage and taxes, if any, on said premises and the costs and disbursements, including attorneys fees allowed by law, subject to redemption within 6 months from the date of said sale by the mortgagor(s) the personal representatives or assigns.
TIME AND DATE TO VACATE PROPERTY: If the real estate is an owner-occupied, single-family dwelling, unless otherwise provided by law, the date on or before which the mortgagor(s) must vacate the property, if the mortgage is not reinstated under section 580.30 or the property is not redeemed under section 580.23, is 11:59 p.m. on October 21, 2023, or the next business day if October 21, 2023 falls on a Saturday, Sunday or legal holiday..
"THE TIME ALLOWED BY LAW FOR REDEMPTION BY THE MORTGAGOR, THE MORTGAGOR'S PERSONAL REPRESENTATIVES OR ASSIGNS, MAY BE REDUCED TO FIVE WEEKS IF A JUDICIAL ORDER IS ENTERED UNDER MINNESOTA STATUTES SECTION 582.032 DETERMINING, AMONG OTHER THINGS, THAT THE MORTGAGED PREMISES ARE IMPROVED WITH A RESIDENTIAL DWELLING OF LESS THAN 5 UNITS, ARE NOT PROPERTY USED FOR AGRICULTURAL PRODUCTION, AND ARE ABANDONED.

Dated: Feb. 20, 2023

PENNYMAC LOAN SERVICES, LLC
Assignee of Mortgagee

LOGS LEGAL GROUP LLP

Melissa L. B. Porter - 0337778
Gary J. Evers - 0134764
Tracy J. Halliday - 034610X
Attorneys for Mortgagee
1715 Yankee Doodle Road, Suite 210
Eagan, MN 55121
(952) 831-4060

THIS IS A COMMUNICATION FROM A DEBT COLLECTOR
(03-02, 03-09, 03-16, 03-23, 03-30, 04-06)

Rock County Highway Dept. seeks bids for bituminous crack sealing by April 17

NOTICE TO CONTRACTORS
BITUMINOUS CRACK SEALING / S.A.P. 067-030-016
BIDS CLOSE @ 10:00 A.M. APRIL 17, 2023
LUVERNE, MINNESOTA

Sealed Sealed proposals will be received by the Rock County Highway Department at Luverne, Minnesota until 10:00 A.M. on Monday, **APRIL 17, 2023**.
READ CAREFULLY THE PROVISIONS FOR THE WAGE RATES AS CONTAINED IN THE PROVISIONS, AS THEY WILL AFFECT THIS PROJECT.
Attention is called to the fact that the contractor must comply with the ****Special Equal Employment Opportunity Provisions**** as contained in this Proposal.

Proposals will be opened and read publicly in the presence of the Rock County Highway Engineer at the Rock County Highway Building located at 1120 North Blue Mound Avenue in Luverne, MN immediately following the hour set for receiving bids for the following Rock County Highway work. Bids will be awarded on Tuesday, April 18TH, 2023 at the regular Board of Commissioners Meeting.
The project consists of a Bituminous Crack Seal Treatment. The project is located on various roads in Rock County
The major items of work are: 63,287 pounds Bituminous Sealant for Crack-filling
Plans, specifications, and proposals may be viewed, and downloaded at www.questcdn.com and at the Rock County Highway Department website, www.co.rock.mn.us/highway. Questions may be directed to the office of the Rock County Highway Engineer, 1120 North Blue Mound Avenue, P.O. Box 808, Luverne, Minnesota 56156-0808 / 507-283-5010.
The non-refundable cost for plans and one proposal will be \$30.00.
Bids must be accompanied by a certified check or corporate surety bond drawn in favor of the Rock County Treasurer in the amount of at least five percent (5%) of the proposal.
Sealed bids shall be clearly marked **"PROJECT NO. S.A.P. 067-030-016"**
The Board of Rock County Commissioners reserves the right to reject any or all bids and to waive any defects therein.
Rock County is an Equal Opportunity/Affirmative Action Employer.

Mark R. Sehr, P.E.
Rock County Highway Engineer
(03-23, 03-30, 04-06)

Rock County Highway Dept. seeks sealed proposals by April 3

NOTICE TO CONTRACTORS
BRIDGE REPLACEMENT & APPROACH GRADING / S.A.P. 067-599-185 ETC.
BIDS CLOSE @ 11:00 A.M. APRIL 3, 2023
LUVERNE, MINNESOTA

Sealed "Bid Packets" will be received by the Rock County Highway Department in Luverne, Minnesota until 11:00 A.M. on Monday April 3, 2023.
READ CAREFULLY THE PROVISIONS FOR THE WAGE RATES AS CONTAINED IN THE SPECIAL PROVISIONS, AS THEY WILL AFFECT THIS PROJECT.

Attention is called to the fact that the Contractor must comply with the **Special Equal Employment Opportunity Provisions & Wage Rates** as contained in the Proposal.

Proposals will be opened and read publicly in the presence of the Rock County Highway Engineer at the Rock County Highway Building located at 1120 North Blue Mound Avenue in Luverne, Minnesota immediately following the hour set for receiving bids for the following Rock County Highway work. Bids will be awarded on **Tuesday April 4, 2023**, at the regular Board of Commissioners Meeting.

Construction of Bridges 67K56 & 67K57 / PCST. Box Culverts.
The Major Quantities of Work are: 41 Ft. of 14'x4' PCST. Box Culvert + 2 End Sections; 40 Ft. of 14'x6' PCST. Box Culvert + 2 End Sections; 40 Ft. of 14'x7' PCST. Box Culvert + 2 End Sections; 681 Cu. Yds. Aggregate Backfill & Bedding; 299 Tons Rock Bedding; & 168 Tons Random Riprap Class 2.
Plans, specifications and proposals may be viewed and downloaded on Quest at www.questcdn.com and at the Rock County Highway Department website, www.co.rock.mn.us/highway. Questions may be directed to the office of the Rock County Highway Engineer, 1120 North Blue Mound Avenue, P.O. Box 808, Luverne, MN 56156-0808 / (507) 283 - 5010.

The non-refundable cost for Plans and one proposal will be \$50.00.
Bids must be accompanied by a certified check or corporate surety bond drawn in favor of the Rock County Treasurer in the amount of at least five percent (5%) of the proposal.
Sealed bids shall be clearly marked **"PROJECT NO. SAP 067-599-185, Etc."**.
The Board of Rock County Commissioners reserves the right to reject any or all bids and to waive any defects therein.
Rock County is an Equal Opportunity/Affirmative Action Employer.

Mark R. Sehr, P.E.
Rock County Highway Engineer
(03-09, 03-16, 03-23, 03-30)

Hear it first at www.star-herald.com

Think spring/from page 1B

strong points. I will start with what I am most familiar with.

Polaris has the most dealers and by a huge margin has the largest variety of accessories. There is not much you could want for a Ranger that you cannot get. I bought a rugged box cargo rack, and when my friends with other makes wanted them, they were not available for their makes and models.

Can Ams are great machines, but they are a little more expensive than some other competitors.

Kawasaki Mules are also great machines, but they are in my opinion louder than others, and talking to my riding companion rolling down the road at 25 mph is still desirable. Accessories for these models can also be a little lacking, especially in the aftermarket segment.

Honda Pioneers are tough and come with a fully automatic transmission just like your car or truck. They upshift and downshift all on their own, and this is very nice. My friend has a 2020, and he has to let it warm up for 10 minutes before he drives it when the temperatures get below 20 degrees. This is kind of a hassle. They are also louder than other makes. They are a very solid rig, though, but are on the higher end pricewise comparably equipped.

The list can go on and on, but in the end things like tight turning radius, ground clearance, comfort of the ride, how loud they are when driving, available accessories, and where you can get it ser-

viced will play in the decision.

The one thing I don't really care all that much about is how big the engine is. My first rig had a 700-cc machine. I have had three 800s, and the one I have now is a 900 because the 800 was no longer available. They sell only 1000 cc engines in this model today. I seed native grass, do prescribed burning, ride in the hills of South Dakota. I do all kinds of habitat work, and I have always had enough power, no matter which one I was driving.

Available units in stock are still very low, so the selling prices don't include many if any good-priced deals. The bright side is the used ones are selling for a premium as well. The one my brother bought was a 2009 Polaris Ranger 800 cc. This rig, used with 4,000 miles on it, was only \$3,000 less than my new 2019 was when I purchased it.

My life would not be complete without a UTV in it. They are hard-working and are certainly the best wildlife ride vehicle out there.

Whatever you decide to do, it will be a lot more fun than sitting on the couch.

Scott Rall, Worthington, is a habitat conservationist, avid hunting and fishing enthusiast and is president of Nobles County Pheasants Forever. He can be reached at scottarall@gmail.com.

Big South selections/continued from page 1B



Greg Hoogeveen photo/0323 gbb
Four LHS girls' basketball players were named to the 2022-23 Big South All-Conference team. Pictured are (left) senior Christina Wagner, junior Kira John, senior Averill Sehr and senior Elizabeth Wagner.

Four members of the Luverne High School girls' basketball team were named to the 2022-23 Big South Conference All-Conference Team, Red Division.

Seniors Christina Wagner and Elizabeth Wagner were named to the Big South Conference All-Conference Team.

Senior Averill Sehr and junior Kira John were named to the Big South Conference All-Conference Honorable Mention Team.

Luverne was named the 2022-23 Big South Conference All-Conference Team, Red Division, followed by Pipestone, St. James, Redwood and Windom.



Greg Hoogeveen photo/0323 bbb
Three LHS boys' basketball players were named to the 2022-23 Big South All-Conference team. Pictured are (left) sophomore Carter Sehr, junior Gavin DeBeer and senior Gannon Ahrendt.

Three boys' basketball players from Luverne High School were named to the 2022-23 Big South Conference All-Conference Team, Red Division.

Senior Gannon Ahrendt and junior Gavin DeBeer were named to the Big South Conference All-Conference Team.

Sophomore Carter Sehr was named to the Big South Conference All-Conference Honorable Mention Team.

Pipestone Area was named the 2022-23 Big South Conference All-Conference Team, Red Division. Windom took second place, Luverne was third, Redwood was fourth and St. James fifth.

Star Herald CLASSIFIEDS

EMPLOYMENT	EMPLOYMENT	EMPLOYMENT	EMPLOYMENT	EMPLOYMENT	MISCELLANEOUS
------------	------------	------------	------------	------------	---------------

HELP WANTED

WE ARE CURRENTLY HIRING FOR THE FOLLOWING POSITIONS:

- TEMPORARY FULL-TIME RN OR LPN FOR MATERNITY LEAVE
- FULL-TIME INFECTION CONTROL NURSE/CHARGE NURSE
- FULL-TIME RN OR LPN

Details:

- 3 days/week
- Every 3rd Weekend Sat/Sun, Every 3rd Holiday

Benefits:

- Flexible Scheduling
- Wage - \$27 - \$32
- Weekend and Overnight Differential Pay
- Additional benefits may apply

Qualifications:

- MN nursing license in good standing or able to obtain license in the state of Minnesota
- CPR certification
- Able to pass a state background check

APPLY NOW!!

Contact Dana Huisman at 507-962-3275 or d.huisman@tuffmemorialhome.com
Fill out an application online: tuffmemorialhome.com
Pick up an application at: 505 East 4th St, Hills, MN 56138

LOCATED ONLY 20 MILES EAST OF SIOUX FALLS!

HIRING PERSONAL CARE ASSISTANT / CNA / HOME HEALTH AID

Individuals who are compassionate and are service oriented to care for others. Assist with activities of daily living, including bathing, dressing, toileting, running errands.

Benefits: Working hour discount, Flexible schedule, Time schedule 5 hours per day & \$30 per hour.

Contact Andy for more information:
andyctrangegrading@gmail.com

MIDWEST FIRE FIRE APPARATUS ASSEMBLER

Midwest Fire Equipment & Repair Company is looking for a full time Fire Apparatus Assembler. Our team is looking for an individual who has a positive attitude, organizational skills and can work in a fast-paced professional manufacturing environment.

DUTIES: Fabrication, welding, reading blue prints, assist in implementation and sustainment of 5S and lean efforts.

QUALIFICATIONS: High school diploma or equivalent. This position requires strong work ethic and mechanical aptitude. Experience in the fire apparatus field, and/or wire feed and tig welding a bonus, but not required. Applications are available online at www.midwestfire.com. You may email a resume or completed application to darcie@midwestfire.com or apply in person at our facility located at 901 Commerce Rd, Luverne MN, office hours are 8 am to 5 pm Monday thru Friday.

TITAN MACHINERY

Full Time Service Technician - Truck

Excellent Compensation Package

Signing Bonus available, depending on experience

Titan Machinery needs to add an experienced Service Technician to our team in Luverne, MN!

As a Service Technician/Diesel Mechanic, you will be a valued member of Team Titan by:

- **Taking Care of Our Customers:** Perform machinery diagnostics, repairs, maintenance, and pre-delivery work on heavy equipment, with a high level of quality and efficiency
- **Being an Expert:** Maintain up-to-date technical, mechanical, and product knowledge that is needed to perform your work
- **Showing Commitment to Excellence:** Complete accurate, detailed, and timely documentation on all reports and forms related to work assignments
- **Being Safe:** Show a focus on always keeping yourself and your team members safe

This position is a great fit for your career if you:

- Have 2+ years of related education or work experience
- Have your own tools, or can acquire them
- Are a mechanically-skilled and customer-focused problem solver
- Can use a computer as needed to complete your work
- Can stay up-to-date on training and certifications

Benefits include, but are not limited to:

- Performance-based incentives
- Tool/Equipment Reimbursement of up to \$1500 per calendar year (TAX FREE benefit!)
- PTO (Paid Time Off) starts accruing on your first day of full-time employment!

Apply online at www.titanmachinery.com/careers or direct inquiries to:

Titan Machinery, HR
644 East Beaton Drive
West Fargo, ND 58078-2648
701-356-0130
EEO/AA: Women, minorities and the disabled are encouraged to apply.

HAVE A UNIQUE SERVICE OR BUSINESS? Get the word out to over 1.4 million households. Call WIDE AREA CLASSIFIEDS today, 507-359-7326. (tc)

EMPLOYMENT

Now Hiring! Sign on bonus of \$1,200 1st shift available, 7 a.m. - 7 p.m.; 3-day/4-day schedule. \$17.62 per hour. Willing to train the right candidate, experienced preferred. APPLY today! Send all resumes to kalcala@glanbia.com or visit our page at www.Glanbia.com (3.4-3.23)

LOCAL. DIGITAL. ADVERTISING.

Advertise YOUR business on 55" digital screens in 12 locations!

For more information contact:
Rick Peterson
507-290-0924
bluemounddigital@gmail.com
Wyatt VanSteenberg
507-220-1994
wyatt.bluemounddigital@gmail.com
507-283-2333 (Star Herald)

STAR HERALD
ANNOUNCER

CALL TODAY

Read the Public Notices online www.star-herald.com

MINNESOTA Classified Advertising Network

WANTED TO BUY WANTED:

ALL 1970S MOTORCYCLES
Running or not. Titled or not. Will pick up. Cash in exchange. Sell now before prices fall. Call Dan at 612/720-2142

EMPLOYMENT

WILLMAR ELECTRIC
is looking for a state-licensed electrician to join our team. Apply online at www.willmarelectric.com/careers/ to join our team and grow with us! Exciting opportunities for advancement!

Your ad here!
Only \$279 to reach a statewide audience of 1.7 million readers!!! **1-800-279-2979**

MISCELLANEOUS DISH NETWORK:

Only from Dish, 3-year TV price guarantee! 99% signal reliability, backed by guarantee. Includes Multi-Sport with NFL Redzone. Switch and get a FREE \$100 gift card. Call today! 855/562-4309

FREE HIGH-SPEED INTERNET

for those that qualify. Government program for recipients of select programs include Medicaid, SNAP, Housing Assistance, WIC, Veterans Pension, Survivor Benefits, Lifeline, Tribal. 15 GB internet service. Bonus offer: Android tablet FREE with one-time \$20 copay. Free shipping & handling. Call Maxsip Telecom today! 866/433-5324

MISCELLANEOUS DONATING YOUR VEHICLE?

Get more! Free towing. Tax deductible. Plus, a \$200 restaurant voucher and a 2-night/3-day hotel stay at one of 50 locations. Call Heritage for the Blind to donate your vehicle today 844/220-9501

ONLY \$279 to reach a statewide audience of 1.7 million readers!!! 1-800-279-2979

THE GENERAC PWRCELL

a solar plus battery storage system. Save money, reduce your reliance on the grid, prepare for power outages and power your home. Full installation services available. \$0 Down financing option. Request a free, no obligation quote today. Call 888/913-5895

Catch up with your LOCAL NEWS! Subscribe TODAY! 283-2333

Rock County STAR HERALD Graduation

Luverne and HBC Seniors get ready for our Graduation Publication!

We need a short bio and a photo.

Scan the code or visit tinyurl.com/SHgrad23 to fill out our graduate information form.

Deadline is March 31

If you have questions, please call 283-2333.

Southwestern Mental Health

We are your preferred provider for 2023.

In partnership with Southwest Health and Human Services, we are here to provide **Rock County** residents with a variety of mental health services such as:



Outpatient Therapy-Adult

If you are experiencing stress, feel overwhelmed, or having difficulties in your relationships, SWMH can help.



Outpatient Therapy-Child

Our staff aid your child or loved one in managing their worries or concerns.



Intensive Residential Treatment (Unity House)

Unity House is an adult nine bed residential facility in Worthington, MN licensed to treat persistent mental illness.



ACT

Assertive Community Treatment (ACT) is a mobile team approach designed to help adults with mental illness.



Psychiatry

SWMH psychiatrists and psychiatric nurse practitioners offer services for individuals across the life course.

Crisis Hotline 1-800-642-1525

Luverne
117 S Spring St
Luverne, MN 56156

Worthington
1210 5th Ave
Worthington, MN 56187



507-376-4141



swmhc.org

SECTION 3A CHAMPIONS



CARDINAL BOYS' HOCKEY

2023 STATE TOURNAMENT QUALIFIERS

THE JOURNEY TO THE STATE TOURNNEY '23



A PRODUCTION OF THE STAR HERALD & FEATURED ADVERTISERS

Cardinals face 'one of the best teams in the state' for first round of competition in boys' hockey state playoffs

Quarterfinal Hermantown 6, LHS 0

By Greg Hoogeveen

The No. 7-seeded Luverne boys' hockey team took on No. 2-seeded Hermantown on March 8 at the Xcel Energy Center in St. Paul.

"Opening round of the state tournament at the Xcel Energy Center is an experience like none other," head coach Phil Paquette said.

Hermantown, the Class A defending champion, beat Luverne 6-0, outshooting the Cardinals 49 to 13 in the game.

Junior LHS goalie Tyler Arends stopped 43 shots in the game while giving up six goals to a strong Hawks team.

Luverne had 13 shots on goal in the game against junior goaltender Dane Callaway for the Hawks.

"Our boys battled with one of the best teams in the state," Paquette said.

"An unfortunate flurry of three goals in one minute by Hermantown in the middle of the first period put us in a tough spot."

Hermantown scored three goals in the first and third periods of the game. The second period had no scoring by either side.

"I was proud of our guys for sticking with it and continuing to battle. At that point it would have been easy to give up," Paquette said.

"We had opportunities to score and put some pressure on Hermantown, but we couldn't make it happen."

Luverne's shots on goal were delivered by sophomore Alexander Schlosser with one, senior Brady Bork with two, sopho-



The Luverne boys' hockey team warms up before the Cardinals' first game against Hermantown March 8 at the Xcel Energy Center in St. Paul.


more Layke Miller with one, senior Brock Behrend attempting two shots, junior Elliot Domagala with two, sophomore Blaik Bork with one shot, junior Patrick Kroski with one, freshman Maddux Domagala shooting two, and junior Henry Hartquist with one shot on goal.



Greg Hoogeveen photo/0316 signs Luverne students (from left) senior Josie Anderson, junior Elle Halverson and senior Carly Olsen hold signs at the Luverne boys' hockey game at Xcel Energy Center in St. Paul March 8.



Luverne ACE
So much more than just a Hardware store
210 East Lincoln • Luverne • 507-283-4161



GRAPHENTEEEN
REAL ESTATE GROUP
HEGG
REALTORS®
anthonym@hegg.com • 507-227-1802



Buffalo Ridge
INSURANCE
808 S. Kniss
Luverne, MN
507-283-2381



Dingmann
Funeral Home • Cremation Service
www.dingmannandson.com
Luverne 507-283-4567
Worthington 507-372-4250
Adrian 507-483-2761



CLEVERINGA
CONSTRUCTION, INC.
507-920-5631
Merlin Cleveringa
Adam Uithoven 507-227-1770 | Derek Sandbulte 507-227-1065
Luverne 507-283-2698 Home
Lic. #BC-20552185



CWG
Business Insurance.
Period!
Continental Western Group
A BERKLEY COMPANY®
Tri-State Region
Ten Roundwind Road
Luverne, Minnesota 56156
(507) 283-9561; (800) 533-0303
www.cwgins.com

Luverne takes on Alexandria Area in consolation semifinals at 3M Arena at Mariucci in Minneapolis

Consolation Semifinal Alexandria 7, Luverne 3

By Greg Hoogeveen

In the consolation semifinal game, the Luverne Cardinals took on the No. 3-seeded Alexandria Area Cardinals on March 9 at 3M Arena at Mariucci in Minneapolis.

Last season Alexandria finished in fourth place at the state tournament, losing out to Mahtomedi 4-2.

“Alexandria is a team that is led by seniors. They turned their season around completely midway through the year,” Paquette said.

“They play fast and physical hockey and came into the consolation round ready to roll.”

The two Cardinals teams started the game trading possessions and feeling out how each other matched up.

Alexandria scored early in the first period at 2:14 in the game, but Luverne was able to hold off any other scoring opportunities to finish the first period down by one goal.

In the second period Alexandria scored two quick goals, the first at 2:05 and the second at 4:31.

Luverne did not back down amid the three-goal deficit, scoring at 7:23 in the second period.

Junior Elliot Domagala scored the team’s first goal of this year’s state tournament appearance assisted by junior Patrick Kroski and sophomore Blaik Bork.

Alexandria scored another goal in the second period to put the score at 4-1 after two periods of play.

In the third period Alexandria added three more goals, one on a power play, another on



Senior Brock Behrend drives the puck into Hermantown’s zone March 8 at the Xcel Energy Center. The Cardinals lost 6-0 to Hermantown in the state quarterfinal game.

a short-handed empty net, and the final at even strength.

Luverne was able to score twice in the third period, lessening the pain of the 7-3 loss.

“I would have liked to see a little more battle and attack out of our guys in the consolation game,” Paquette said.

“We were able to score a few goals but never really put a complete game together.”

Brady Bork closed out his senior year when he scored a goal at 10:07 assisted by Kroski and

Elliot Domagala.

Bork also became a viral sensation before the game when he “scored” a prom date on live television during the opening introductions.

Bork wrote on his hockey stick, “Hey Sarah, Prom?” Sarah Stegenga quickly replied on a hockey stick, “Yes” and posted it to Twitter.

On another high note junior Will Serie scored his first and only goal of the season at 15:40 in

Semifinal/continued on page 5



Loosbrock Electrical Construction, LLC
Licensed • Bonded • Insured
Residential • Commercial • Industrial • Agriculture
scott@loosbrockelectric.com
www.loosbrockelectric.com

Scott Loosbrock
Owner
507-360-5418



Country Cupboards

"Where Fine Craftsmen Produce Work With Pride!"
2 miles south of Luverne on Hwy. 75 | 507-283-8176



Bill Korth
Auction Service
Licensed Auctioneer
710 N. Oakley
Luverne, MN 56156
Home: 507-283-4766
Cell: 507-227-4958



Connell
Car Care
★ Luverne, MN
800-844-2341



HOWLING DOG SALOON
507-449-0454
NOW HIRING!



First Farmers & Merchants
TEAMWORK FOR THE WIN!
Congrats to the Luverne Varsity Boys Hockey Team for making it to State!

We believe in you.
Member FDIC. And the community.



303 E Main St | Luverne | 507-283-4463




LHS team members include (front, from left) Elliot Domagala, Blaik Bork, Kaleb Hein, Tyler Arends, Brock Behrend, Ethan Langseth, Patrick Kroski, Gavin Reisch, (middle) assistant coach Kaden Ericson, Alexander Schlosser, Levi Gonnerman, Maddux Domagala, Sage Viessman, Marcus Vortherms, manager Jose Medina Najera, manager Spencer Kracht, head coach Phil Paquette, (back) Brady Bork, Will Serie, Tucker Dammann, Owen Sudenga, Henry Hartquist, Layke Miller, assistant coach Chris DenHoed and manager Kai Buss.

**Congratulations Luverne Cardinals
on an outstanding season!**



PEPSI BOTTLING CO. 1801 FORMAN DR., PIPESTONE, MN 56164



Greg Hoogeveen photo/0316 state arends
Junior goalie Tyler Arends stops Hermantown from scoring a goal. Luverne fell 6-0 to the defending champions in the Cardinals' first game at the state hockey tournament.



Greg Hoogeveen photo/phil paquette
LHS head coach Phil Paquette looks to the crowd before the Cardinals' game against Hermantown March 8 at the state tournament.

Semifinal/continued from page 3

the third period. He was assisted by junior Owen Sudenga and Kroski.

Junior goalie Tyler Arends faced 40 shots on goal in the game from a quick and dangerous Alexandria team.

Luverne placed 20 shots on the Alexandria goalie in the game, beating him three times.

Paquette reflected on the past season.

“The 2022-2023 season was awesome, thanks to a great group of players, coaches, parents and fans,” he said.

“We were able to learn throughout the season what makes us successful

and do it well down the stretch.”

He said the Cardinals worked hard for their post-season opportunities.

“We played three complete games in the Section 3A playoffs to earn a trip to the state high school hockey tournament,” Paquette said.

“This experience is unmatched and will not be soon forgotten by any of us.”

Looking forward to next year, Paquette said he is optimistic.

“We return the majority of this team next season,” he said. “And I hope that this experience pushes them to stay hungry and come back stronger next year.”



Greg Hoogeveen photo/0316 Bhoc state band
The LHS pepband, led by band director James Jarvie, traveled to play at the state tournament March 8 at the Xcel Energy Center in St. Paul.

H&A

HEIDEBRINK & ASSOCIATES

224 E MAIN ST
LUVERNE, MN 56156
PHONE 507-283-4085
HEIDEBRINKAGENCY.COM

FARM • HOME • BUSINESS • LONG TERM CARE • AUTO • CROP • LIFE • HEALTH

Nutrien

Ag Solutions™

612 W Hatting Street, Luverne, MN 56156
www.nutrienagsolutions.com • 507-449-7679

Luverne

Aquatics & Fitness

Quality Service Since 1927!

McClure Electric

121 N. Cedar, Luverne, MN | 507-283-4716

Alan M. Aanenson, owner

BIG

Oru's

BAR

UPTOWN ADRIAN, MN

507-483-2885

Luverne

Rotary Club

Luverne, MN



submitted photo

The Luverne boys' hockey team practices at the 3M Arena at Mariucci March 7 before the state tournament. A special guest and former Cardinal, Jaxon Nelson, who now plays for the U of M Gophers, practiced with the team.



submitted photo

The Luverne boys' hockey team is loaded on the bus and on their way to St. Paul for the 2023 state tournament.



submitted photo

The LHS students cheer for the boys' hockey team before boarding a bus to the state hockey tournament.


digitellstudio.com
High school sports photography



CONGRATS
Section 3A Champs
Luverne boys hockey



ADRIAN - LUVERNE, MINNESOTA
201 Louisiana Ave | Adrian, MN | 507-483-2486
www.henninginc.com



Dr. Tanner Brolsma

LUVERNE
Family Dental

115 East Main Street
Luverne, MN 56156
(507) 283-9129

Ketterling Services, Inc.

401 S. Cedar St. • Luverne, MN • 507-283-2863 • www.ketterlingservicesinc.com
Hours: Tues.-Fri. 8:30 a.m. to Noon & 1 p.m. to 5 p.m.

Roll-Off Service for Building Demo & Remodeling

SANITATION:
Commercial
Residential
Rural



Monthly - Weekly - Daily

RECYCLING:
Collection
Dropoff



Luverne Area
Community Foundation

102 E. Main St. • P.O. Box 623 • Luverne, MN 5616
www.luvacf.org • (507) 220-2424

Give Where You Live
today, tomorrow & beyond



HARTQUIST

FUNERAL & CREMATION SERVICES

Celebrating Life

Pipestone Luverne Lake Benton Jasper Tyler
www.HartquistFuneral.com



submitted photo
A farewell team photo at the Blue Mound Ice Arena with a huge State Bound banner was part of the boys' send-off festivities.



submitted photo
Head coach Phil Paquette addresses the student body at a pepfest March 6 before leaving for the 2023 Minnesota boys' state hockey tournament in St. Paul.

“Opening round of the state tournament at the Xcel Energy Center is an experience like none other.”

— Coach Phil Paquette



submitted photo
Students and the boys' hockey team watch a video tribute to their season at a pepfest in the Performing Arts Center.



KEVIN AAKER
kevin@luvernebodyshop.com
ANDREW HEMME
andrew@luvernebodyshop.com

920 Commerce Rd.
Luverne, MN 56156
507.283.8711



**BANK WITH PEOPLE
YOU KNOW AND
TRUST.**

**SECURING
YOUR FUTURE**

**SECURITY
SAVINGS BANK** bankwithssb.com

Member
FDIC



www.manleytire.com
1-800-615-3704

Rock County Abstract & Title, Inc.

LORI DERAGISCH
President
LDRCAT@iw.net

110 N Oakley St
Luverne, MN

Phone 507-283-8460
Fax 507-283-8461



FREE in-home water test

Culligan Water
of Southern Minnesota
CULLIGANMN.COM
507-283-9105



**STOP IN AND SEE US IN OUR
GRAB & GO STOREFRONT**

602 East Main
Luverne, MN
507.449.7608
bluestemcatering@outlook.com
www.bluestemcateringco.com

Luverne boys' hockey team crowned Section 3A champions, defeating New Ulm 4-2 at Lund Center in St. Peter

By Greg Hoogeveen

The Cardinal boys were crowned Section 3A Champions March 1 in section playoffs at the Lund Center in St. Peter.

The Cardinals beat their nemesis, the New Ulm Eagles, 4-2 to move on to Class A Quarterfinal competition against Hermantown at the Xcel Energy Center in St. Paul March 8.

Luverne faced New Ulm twice in the regular season, losing both games.

In their first meeting on Dec. 9, New Ulm beat Luverne 2-1 on the road. In the second game Jan. 26, the Eagles beat the Cardinals 4-1 at home.

In the championship game March 8, Luverne came ready to play and avenged their two season losses to the Eagles.



Greg Hoogeveen photo/0309 bhoc champs

The Cardinals pose with their Section 3A Championship plaque March 1 after beating New Ulm 4-2 in St. Peter. Players are (front, from left) Blaik Bork, Brady Bork, Brock Behrend, Patrick Kroski, Gavin Reisch, Tyler Arends, Xander Remme, (middle) manager Conner Connell, Kaleb Hein, Marcus Vortherms, Maddux Domagala, Owen Sudenga, Ethan Langseth, Sage Viessman, Henry Hartquist, Levi Gonnerman, Alexander Schlosser, (back) Will Serie, Layke Miller, Tucker Dammann, Elliot Domagala, manager Kia Buss, head coach Phil Paquette, assistant coach Kaden Ericson, manager Spencer Kracht, assistant coach Chris DenHoed and manager Jose Medina Najera.

The stage was set, with the crowd in attendance heavily favoring New Ulm 3 to 1. The Luverne fans were not deterred and cheered on the Cardinals as if they were on home ice.

A minute and 59 seconds after the puck dropped, senior Brady Bork scored the first goal assisted by junior Elliot Domagala

and stunned the New Ulm team and crowd.

New Ulm tied the game at 13:41 in the first period and brought the Eagles

crowd back into the game.

At the end of Period 1, the score was tied 1-1.

In the second period sophomore

Blaik Bork beat the Eagles' goalie on a power play assisted by junior Owen Sudenga and senior Brock Behrend.

PRINTING, INC.

PAPER, SIGNS & PROMOTIONAL ITEMS

401 W Hatting St., Luverne, MN 56156
507-283-1716
qualityprinting-luverne.com

Luverne

Area Chamber & CVB

Luverne, MN 56156 ~ 507-283-4061

Real Estate Retrievers

Allstate Realty Team ~ Rewarding you with Results

MLS

REALESTATERETRIEVERS.COM

LUVERNE, MN
507-283-4216

HILLS, MN
507-962-3433

PIPESTONE, MN
507-562-0450

EDGERTON, MN
507-631-1717

CATTNACH

INSURANCE AGENCY

Auto • Farm/Home • Crop/Hail • Commercial Life • Health • Long Term Care • Disability

info@Cattnach.com
www.cattnach.com

South Hwy. 75, Luverne, MN
507-283-8383

DEN HERDER

CONSTRUCTION, INC.

P.O. Box 522 • Luverne, MN 56156-0522

Cal Den Herder 507-920-8917

Colby Den Herder 507-220-2239

Pizza Ranch

110 E. Main, Luverne **507-283-2379**



Greg Hoogeveen photos
Luverne parents react to the Cardinals' 4-2 Section 3A Championship win over New Ulm. New Ulm beat Luverne twice in the regular season.



Senior Brock Behrend sends the puck toward New Ulm's goalie in the Section 3A Championship game in St. Peter. Luverne beat New Ulm 4-2 to take the championship March 1.

Luverne showed new life and closed the second period ahead 2-1.
In the third period Blaik Bork scored once again on a power play at 1:10 assisted by Sudenga and Behrend.
At 3:32 in the third, New Ulm was able to

get one past LHS goalie junior Tyler Arends to bring the Eagles one goal closer to a now 3-2 game.
The Cardinals did not fold, and goalie Arends blocked everything that came at him.
At 9:29 in the third period, Elliot Doma-

gala sealed Luverne's win when he beat the Eagles goalie one more time, assisted by freshman Maddux Domagala.
Luverne outscored New Ulm 4-2, securing the Cardinals' ticket to state competition at the Xcel Energy Center on March 8.



Greg Hoogeveen photo/0323 Bhoc champs bork
Sophomore Blaik Bork breaks for the net against New Ulm March 1 in the Section 3A championship game in St. Peter. The Cardinals beat New Ulm 4-2 to punch their ticket to the state hockey tournament.



The Cardinal student section erupts after the 4-2 win over New Ulm March 1 in St. Peter. Luverne's crowd was outnumbered 3-1 by New Ulm, which made the win even sweeter.

Southwestern
Mental Health

Congratulations Luverne Boys Hockey Team!

Reach Us At:
507-376-4141

Visit Our Website:
swmhc.org

Main Locations:
Luverne & Worthington

Jason Vote, Agent
311 W Gabrielson Rd #3
Luverne, MN 56156
507-283-4401

JOHN DEERE

C&B — Luverne

Congratulations!
STUDENT ATHLETES

TITAN MACHINERY
410 W Koehn Ave · Luverne, MN · 507.283.2319
www.titanmachinery.com

INC.

102 E. Maple
Luverne, MN
507-283-9151

D. & G.
Drinking
Water
Systems

Water made by
reverse
osmosis process
Rentals • Sales • Service

610 West Hatting
Luverne, MN
507-283-4630 • Darin Smeins
Lic. # WM068242

LHS beats Mankato East/ Loyola 6-2 in semifinal play in St. Peter to advance in Section 3A

LHS 6, Mankato East 2

By Greg Hoogeveen

The Luverne boys' hockey team traveled to St. Peter on Feb. 27, and the Cardinals took down Mankato East/Loyola 6-2 in the Section 3A semifinal game.

Luverne put 20 shots on the Mankato goalie, beating him six times. Mankato tested LHS junior goalie Tyler Arends with 27 shots and only two snuck by his pads.

In Period 1 Blaik Bork scored first on a power play at 16:40 assisted by Behrend.

Behrend followed up at 16:55 with a goal assisted by Kroski and Elliot Domagala, giving LHS a 2-0 lead after one period.

Mankato tied it up 2-2 in the second period with two goals of its own.

In the third period the Cardinals opened up scoring four times to advance to the Section 3A finals.

Behrend got his second goal at 0:39 into the third period assisted by Sudenga.

Elliot Domagala scored at 7:54 assisted by Sudenga.

Blaik Bork made his second goal of the game at 8:08 assisted by Kroski and Behrend.

Behrend got his third goal, a hat track, on an empty netter at 14:30 assisted by Sudenga.



LHS junior Patrick Kroski looks for an opening in the Mankato East net Feb. 27 in Luverne's 6-2 Section 3A semifinal win. Camden Hoven photo



The Cardinals celebrate their 6-2 Section 3A semifinal win over Mankato East/Loyola Feb. 27 in St. Peter. Camden Hoven photo

FAREWAY®
MEAT MARKET
220 W MAIN STREET • LUVERNE, MN 56156
507-449-9702


taco john's™
SINCE 1969
South Hwy. 75, Luverne
507-283-4562


Heartland Mutual Insurance Company
Specializing in
Farm & Home Insurance
"Serving our Policyholders for over 125 years"
Lismore • 507-472-8216 | Luverne • 507-283-9182

New Prairie Insulation
Beaver Creek, Minn.
507-673-2548


CERTIFIED ENERGY EXPERT™

Luverne boys' hockey team wins quarterfinal game beating Windom 5-2 at the Blue Mound Ice Arena

LHS 5, Windom 2

By Greg Hoogeveen

The LHS boys' hockey team faced off against Windom at home for the Section 3A Quarterfinals game on Feb. 24 when the Cardinals beat the Eagles 5-2.

The two teams played all three periods with only one penalty going to the Cardinals for slashing.

Luverne tested the Eagles' goalie with 53 shots on goal in the game.

Windom had 15 shots on LHS junior goalie Tyler Arends, who stopped all but two shots in the game.

The first period went to the visiting Eagles, who scored one goal at 13:24 at even strength.

The Cardinals answered with two goals of their own in the second period.

Senior Brady Bork scored for Luverne at 6:29 in the second assisted by sophomore Blaik Bork.

Senior Brock Behrend got the second goal at 16:24 assisted by juniors Tucker Dammann and Henry Hartquist.

LHS was up 2-1 after two periods of play.

In the third period Behrend got his second goal at 8:09, assisted by sophomore Layke Miller.

Junior Elliot Domagala made the score 4-1 at 10:40 with a goal assisted by Brady Bork.

Junior Owen Sudenga made Luverne's final goal at 13:14 in the third assisted by Hartquist.

Windom was able to sneak in one more goal at 16:09 in the third period to make the final score Luverne 5, Windom 2.



The Luverne boys' hockey team celebrates the 5-2 Section 3A quarterfinal win over Windom on home ice Feb. 24 in Section 3A quarterfinal play.



Greg Hoogeveen photo/0323 Bhoc brock Senior Brock Behrend sends a slap-shot toward Windom's net in their Section 3A quarterfinal matchup Feb. 24.



Greg Hoogeveen photo/0323 Bhoc bork Senior Brady Bork celebrates his goal against Windom Feb. 24. The Cardinals beat the Eagles 5-2 in the Section 3A quarterfinal game at home.



North Highway 75, Luverne (507) 283-4889

EISMA AND EISMA
ATTORNEYS AT LAW

130 East Main St. Luverne MN
507-283-4828





Rock County
STAR HERALD

STAR-HERALD.COM | 507-283-2333 |   



CONGRATULATIONS

on your dedication, hard work and years of practice!

LHS

Team members pictured are (front, from left) Blaik Bork, Brady Bork, Brock Behrend, Patrick Kroski, Gavin Reisch, Tyler Arends, Xander Remme, (middle) manager Conner Connell, Kaleb Hein, Marcus Vortherms, Maddux Domagala, Owen Sudenga, Ethan Langseth, Sage Viessman, Henry Hartquist, Levi Gonnerman, Alexander Schlosser, (back) Will Serie, Layke Miller, Tucker Dammann, Elliot Domagala, manager Kai Buss, head coach Phil Paquette, assistant coach Kaden Ericson, manager Spencer Kracht, assistant coach Chris DenHoed and manager Jose Medina Najera.



BANTAMS



Bantams team members include (front, from left) Marcus Papik, Blake Sauer, Ben Hartquist, Landyn Lais, Brady Palaschak-Smeins, Gavin Hoven, Jude Hoven, Jackson VanMaanen, Colton Haubrich, (second row) coach Matt Lais, Jaxon Lais, Trenton Lass, Zeke Frahm, Brody Goembel, Will Bergman, Kale VerSteeg, Maddox Miller and coach Val Manchak.

PEEWEE A



Peewee A team members include (front) Oliver Mead, (second row, from left) Porter McClure, Will Saarloos, Hayden Kurtz, Crosby Sandbulte, Trinley Vanderburg, (back) Griffin Sailor, Cade VandenHoek, Ben Buss, Jared Wentzel, Mallachi Domagala and Saul Hoven.

PEEWEE B



Peewee B team members include (front, from left) Madden Von Tersch, Lucas Hein, Ryder Kobernusz, Levi Kelly, Hayden Sauer, Charlie Von Tersch, (back) Aden Remme, Cooper Cauwels, Efrain Medina, Ian Thorson, Korbin Miles and Graham Hartquist.

Thank you to everyone who has supported the

Luverne Hockey Association

in the beginning, today and in the future.

Thank you also to coaches, parents, kids and the community for your encouragement. Without you, this wouldn't be possible!



Regular season schedule		
Date	Result	Opponent
Tue Nov 29	W 5-3	@ Marshall
Fri Dec 2	T 2-2	Two Rivers
Sat Dec 3	W 11-1	Waseca
Fri Dec 9	L 1-2	@ New Ulm
Sat Dec 17	W 8-0	@ Rochester Lourdes
Wed Dec 28	W 6-1	@ Rochester Lourdes
Thu Dec 29	L 1-5	Dodge County
Fri Dec 30	L 3-6	Albert Lea
Sat Jan 7	L 3-4	Morris/Benson
Mon Jan 9	W 8-1	@ Worthington
Thu Jan 12	W 7-0	@ Redwood Valley
Sat Jan 14	L 4-5	@ Waseca
Mon Jan 16	W 7-1	@ Fairmont
Tue Jan 17	W 4-2	@ Albert Lea
Sat Jan 21	W 9-1	@ Dodge County
Tue Jan 24	W 11-2	Worthington
Thu Jan 26	L 1-3	New Ulm
Sat Jan 28	W 6-5	Windom
Tue Jan 31	W 7-0	Redwood Valley
Thu Feb 2	W 4-2	Marshall
Sat Feb 4	W 7-4	@ Morris/Benson
Tue Feb 7	W 10-3	Fairmont
Fri Feb 10	W 4-3	Minnesota River
Sat Feb 11	W 4-0	@ Minnesota River
Thu Feb 16	W 5-3	@ Windom

Regular season record 18-6-1

Post-season schedule		
Date	Result	Opponent
Fri Feb 24	W 5-2	Windom
Mon Feb 27	W 6-2	Mankato East/Loyola
Wed Mar 1	W 4-2	@ New Ulm
Wed Mar 8	L 6-0	@ Hermantown
Thurs Mar 9	L 7-2	@ Alexandria Area

Post-season record 3-2

2022-23 Season record 21-8-1
Big South Conference record 13-3



January 21
Congrats to head coach
Phil Paquette for his 100th
career win!



February 7
Congrats to Brock
Behrend for his 100th
career goal!

KLOSTERBUER & HAUBRICH, LLP

DONALD R. KLOSTERBUER
JEFFREY L. HAUBRICH
DAVID A. OWENS

120 N MCKENZIE, LUVERNE, MN
507-283-9111





McClure

PLUMBING, HEATING, AIR CONDITIONING, INC.

412 S KNISS AVE. LUVERNE, MN 56156
PHONE 507-449-2828
FAX 507-449-2829



MINNWEST
BANK®

116 East Main Street • Luverne • 507-283-2366
Hwy. 75 • 800 South Kniss • Luverne • 507-283-9131

www.minnwestbank.com • Member FDIC • MoneyLine 888-616 BANK

ST. CATHERINE'S CHURCH




203 E. Brown St.

Luverne

Optimist Club

Supporter of youth
recreation in Rock County.



TIM WALGRAVE • JOSH VANDENHOEK • SETH MILLER

310 W. Hatting Street, Luverne MN
Office: 507-449-8315 Fax: 507-449-8326



Kaleb Hein

Favorite memory:
Beating New Ulm in the section finals to move on to state.

My advice:
Make every game count. You don't want to look back and feel like you could've put out more effort than you did that game. It also goes by faster than you think it will.

What led to our success: Having a group of boys that knew things wouldn't come easy. The boys had a "head down and grind" mindset, so we always strived to be better and do more.



Brock Behrend

My best memory is the state tournament.

My advice:
Make sure you have fun and always respect the game doing it.

For my success it was the hours of training, and shooting pucks during the summer. For the team's success it was more so just deciding to put our heads down and grind at the start of playoffs.



Brady Bork

My best memory is winning the section championship.

My advice for younger players is to enjoy every little thing about hockey whether it is staying in a hotel with teammates or playing with your best friends because those are the types of things that you're going to miss when it's all said and done.

I think what has led to our success is the way we always stuck to it and never gave up. Four years ago the hockey team I was on was getting beat almost every single game. Ever since that season we progressively got better by putting our heads down and grinding so we didn't have to experience a season like that again.



Gavin Reisch

My best memory is getting to witness the player side of the state tournament.

My advice:
Just have fun while it lasts.

What led to our success, I'd say teammates. We are all pretty close with each other out of school. So it definitely makes practices easier.



Ethan Langseth

My best memory was getting to go to state tournament with the team.

My advice:
always keep practicing on and off the ice. Just giving 100 percent of what you can 100 percent of the time

"This experience is unmatched and will not be soon forgotten by any of us."

— Coach Phil Paquette

212 S Kniss, Luverne • (507) 283-3704 or (877) 631-3704

Viking Electric LLC
Tim Gangestad
Owner
(507) 290-2595
vikingelectricmn@gmail.com
Conquering all of your electrical needs!
Residential • Commercial • Agricultural

Meulebroeck, Taubert & Co., PLLP
Certified Public Accountants

• Tax planning & preparation • Accounting, Payroll & Bookkeeping services
• Agri-plan™ - pretax medical deductions

109 S. Freeman, Luverne, MN
507-283-4055

108 E. MAIN ST. • LUVERNE, MN 56156
507-449-0220 • WWW.STERLINGSLUVERNE.COM



Greg Hoogeveen photo
Senior members of the boys' team include (from left) Brock Behrend, Kaleb Hein, Gavin Reisch, Ethan Langseth and Brady Bork.

SENIOR CLASS of 2023



**BIG
SOUTH
CONFERENCE**

Boys’ Hockey All-Conference Team

Senior Brock Behrend, juniors Tyler Arends, Patrick Kroski and Owen Sudenga

Honorable Mention

Junior Elliot Damagala and sophomore Blaik Bork

“We return the majority of this team next season and hope that this experience pushes them to stay hungry and come back stronger next year.”

— Coach Phil Paquette

Skaters

No.	Class	Name	Goals	Assists	Points	SOG
2	12	Ethan Langseth	2	14	16	3
3	12	Kaleb Hein	0	2	2	1
5	11	Will Serie	0	1	1	0
7	10	Alexander Schlosser	4	3	7	5
8	12	Brady Bork	18	14	32	22
9	11	Owen Sudenga	18	32	50	18
10	10	Layke Miller	2	3	5	2
11	12	Brock Behrend	38	23	61	48
12	11	Elliot Domagala	21	20	41	22
13	10	Blaik Bork	10	27	37	12
14	10	Levi Gonnerman	2	0	2	3
15	12	Gavin Reisch	0	0	0	0
19	11	Patrick Kroski	21	44	65	25
20	10	Marcus Vortherms	0	4	4	1
21	9	Maddux Domagala	12	10	22	13
22	11	Spencer Kracht	1	0	1	1
23	11	Henry Hartquist	4	12	16	5
25	10	Jose Medina Najera	0	0	0	0
27	11	Tucker Dammann	0	2	2	0
33	10	Sage Viessman	0	0	0	0

Goalies

No.	Class	Name	Wins	Losses	Ties	Saves	Shutouts
30	11	Tyler Arends	21	6	1	686	3
31	9	Xander Remme	0	0	0	4	0

Congratulations on a great season!

COACHES • PLAYERS

Luverne Cardinals

**Papik
MOTORS**

Luverne • Rock Rapids • Sibley

Let the **Papik team** take care of all of your automotive needs.
We make it easy!

507-283-9171 712-472-2595 WWW.PAPIK.COM

Congratulations Cardinals!



Section 3A Champions State Tournament Qualifiers



Photo by Greg Hoogeveen

Team members pictured are (front, from left) Blaik Bork, Brady Bork, Brock Behrend, Patrick Kroski, Gavin Reisch, Tyler Arends, Xander Remme, (middle) manager Conner Connell, Kaleb Hein, Marcus Vortherms, Maddux Domagala, Owen Sudenga, Ethan Langseth, Sage Viessman, Henry Hartquist, Levi Gonnerman, Alexander Schlosser, (back) Will Serie, Layke Miller, Tucker Dammann, Elliot Domagala, manager Kai Buss, head coach Phil Paquette, as-
sistant coach Kaden Ericson, manager Spencer Kracht, assistant coach Chris DenHoed and manager Jose Medina Najera.

We're proud to support
Luverne High School activities and
be a part of this winning community!

