

A Luverne ANNOUNCER

117 West Main St. • Luverne, MN 56156-0837 • Phone 507-283-2333 • Address Service Requested

VOLUME 86 NUMBER 35

ROCK COUNTY'S FREE CIRCULATION PUBLICATION SINCE 1931

August 21, 2016

PRSR STD
U.S. POSTAGE
PAID
Permit No. 22
Page 1 Printers
Postal Customer

Community Update

Meetings

Luverne Bowling Association will meet at 7 p.m. Monday, Aug. 22, at the Luverne Lanes. Leagues are available and all bowlers are welcome.

Grand Prairie Cemetery Association will meet at 7 p.m. Tuesday, Aug. 30, at the Grand Prairie Cemetery. In case of rain, the meeting will be in the back room of Orv and Sons Plumbing in Ellsworth.

Green Earth Players annual meeting will be at 6:30 p.m. Tuesday, Sept. 6, in the Green Earth Players building at 401 W. Edgehill St., Luverne.

Luverne Area Moms meet monthly during the school year on the second Wednesday morning of each month. Mothers of young children interested in meeting with other moms are invited. Registration is required. The kick-off meeting for the year is **Wednesday, Sept. 14**. For more information, contact Wanda Jarchow, 507-283-9664.

Narcotics Anonymous will meet every Thursday evening at 6:30 p.m. at the Steen Reformed Church. Contact Robert for more information 507-329-2642.

Women's Alcoholics Anonymous meets at 8 p.m. Mondays in the United Methodist Church basement. Use the east entrance.

Al-Anon meets from 6:30 to 7:30 p.m. Wednesdays in the Buffalo Ridge Meeting Room (lower level) at the Sanford Medical Center in Luverne. Call Stephanie at 507-449-1246.

Narcotics Anonymous meets at 7 p.m. Fridays and for basic text study at 7:30 p.m. Tuesdays in the basement of St. Catherine Catholic Rectory, 203 E. Brown St., Luverne. Use east door. For more information call 507-220-0137.

Alcoholics Anonymous meets at 8 p.m. Wednesdays and Saturdays in the United Methodist Church, Luverne. Call 605-321-4324.

Alcoholics Anonymous and Al-Anon meet from 8 to 9 p.m. every Tuesday in Runals Memorial Hall, Edgerton. Call Naomi, 507-215-2956, with questions.

Hwy. 15 closed for bridge construction

Rock County Highway 15 (61st Street) will be closed 1 1/2 miles east of Kanaranzi for new bridge construction over Kanaranzi Creek. Construction began Aug. 9, and a signed detour will be in place during the 10 to 14 weeks of construction. For more information contact Rock County Highway Engineer Mark Sehr at 507-283-5010.

Luverne School District #2184

registration for 2016-2017 school year

New residents to Luverne School District #2184 should come to respective school offices and register students for school year 2016-2017. School starts Tuesday, Sept. 6, 2016.

The High School/Middle School Office is open for new students to register. Call 507-283-4491 to make an appointment for grades 6-12.

The Elementary Office is now open for new students to register. Parents of elementary students grades K-5 can call 507-283-4497.

Fourth Wednesday free meal Aug. 24

The Fourth Wednesday free community meal will be Wednesday, Aug. 24, at the United Methodist Church. Food service begins at 5:30 p.m.

Luverne High School play tryouts Aug. 24

Luverne High School fall play auditions for "The Case of the Missing Gobbler" will be from 1-5 p.m. Wednesday, Aug. 24, in the Luverne High School theater. Contact Sharon Boltjes at s.boltjes@isd2184.net with questions.

Free community meal Aug. 24

Serving will begin at 5:30 p.m. Wednesday, Aug. 24, at the United Methodist Church in Luverne for the Fourth Wednesday Free Community Meal.

Afternoon Escape movie Aug. 25

The Palace Theatre will show "Eddie the Eagle" as the Afternoon Escape movie at 2 p.m. Thursday, Aug. 25. Admission is \$5. The event is sponsored by Hartquist Funeral Home and Sterling's Café and Grille.

Community Ed offers bus to State Fair

Spend a day at the **Minnesota State Fair on Aug. 29**. Let Community Education do the driving and the parking, you just enjoy the experience. Cost of \$65 covers bus and fair ticket. Bus will have pick up spots in Luverne and Worthington. Call 283-4724 (office is closed on Fridays).

Rock County STAR HERALD

Coming this week in the
Rock County Star Herald



Lori Sorenson photo/0825 recount wide

Recount shows same results

Wednesday's recount in the District 3 county commissioner primary election revealed the same number of votes for each candidate - 67 for Ron Boyenga and 67 for Darrel Van Aartsen. During canvassing last week, the two tied candidates drew from a deck of playing cards to determine who would advance. Boyenga drew an ace (aces were low) and Van Aartsen drew a queen, which made him the nominee. Since the recount showed the same results, Burger and Van Aartsen will have their names on the ballot for the general election. Boyenga has indicated he may run a write-in campaign. Look for that coverage, in addition all the latest local news, sports and features, in Thursday's Rock County Star Herald.



Join us for our BACK TO SCHOOL

August 22 - 31



TENT SALE!

We are having our annual
Summer Clearance event!
Great deals and price
reductions all over the lot.
Hurry in for best selection.

2016 Chevrolet Cruze

Stock #316751C



20% OFF

2016 Chevrolet Express Cargo Van

Stock #326067C



20% OFF

2016 Chevrolet 2500HD

Stock #225478C



20% OFF

2016 Chevrolet Sonic

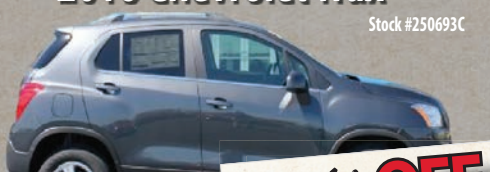
Stock #124492C



20% OFF

2016 Chevrolet Trax

Stock #250693C



20% OFF

2016 Dodge Charger

Stock #294227D



20% OFF

2016 GMC Sierra

Stock #311205G



20% OFF

2016 Ram 1500

Stock #251516D



20% OFF

2016 Ram 1500

Stock #296326D



20% OFF

2016 Ram 1500

Stock #291901D



20% OFF

2016 Ram 1500

Stock #302987D



20% OFF



507-283-9171 or 800-634-7701
PAPIK.COM




COME 'N GO
Bridal Shower
LEXY BURMEISTER
BRIDE-TO-BE OF **BEN AUKES**
Saturday, August 27
Noon to 3 p.m.
Luverne City Park



Couple is registered at Target and Bed, Bath & Beyond

New Prairie Insulation, Inc.
Serving Residences & Contractors
FREE ESTIMATES
---Insulation---
Arnold Brondsema
Beaver Creek, MN
507-673-2548 or
1-800-232-7089



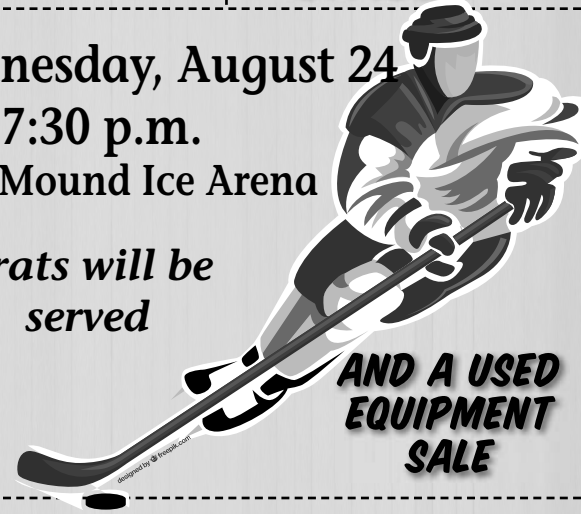
 **HOCKEY REGISTRATION NIGHT**
2016-2017 SEASON

Wednesday, August 24
5 to 7:30 p.m.
Blue Mound Ice Arena

Brats will be served

AND A USED EQUIPMENT SALE

QUESTIONS CALL JEREMY SUDENGA
507-920-9240



Real Estate Retrievers
Matt Larson, Broker
LUVERNE, MN • 507-283-4216
HILLS, MN • 507-962-3433
REALESTATEREtrievers.COM • REALTOR.COM • HOMEVIEWSIUXFALLS.COM

For daily updates on the NEW listings or any of our other listings check out
www.realestateretrievers.com

FEATURED LISTINGS

606 NE PARK  \$94,900 2 Bedroom - Full Bath Potential 3rd bedroom Corner lot, next to school	10 LOTS PARKVIEW 1ST ADDITION IN HILLS \$10,000-\$15,000 Bring your own contractor and with Buyer incentives available your lot maybe virtually free.
--	---

If you are considering selling your home, call for a free market analysis to find out what your home may be worth.

JMSI
JENSEN MANAGEMENT SERVICE, INC
REAL ESTATE - APPRAISALS - MANAGEMENT

Check out our listings at:
WWW.JMSI.NET
Call: 507-283-2391
Call about our private listings.

William (Bill) V. Weber, broker - 507-220-4803
William (Bill) J. Korth - 507-227-4958
Tamra (Tammy) Jo Makram - 507-227-7010

471 200TH AVE, ELLSWORTH | \$159,900

NEW LISTING



10 acres of land with apple trees and well maintained out-buildings including a 24x40 machine shed, 12 x 19 shop, 32x15 chicken coop and a 40 x 20 hog house make this a beautiful place to enjoy the outdoors. The home has been well maintained as well with a large living room, kitchen, formal dining, sunroom and entry room on the main floor. Upper level offers three bedrooms and full bath.

We have buyers! WE NEED YOUR LISTING!

LUVERNE'S LOCALLY-OWNED AND OPERATED MLS AGENCY

FOR COMPLETE LISTINGS LOG ONTO
WWW.CRAGOE.COM

Cragoe Realty
Selling Real Estate in the Heart of the PrairieLand.

Your hometown real estate broker for over 22 years
Scott Adams, broker 507-227-0840
Gene Cragoe, broker lic. in MN & SD info@cragoe.com
507-283-2647 or 800-689-2647



Duane J. Mulder Realty
DUANE MULDER AUCTION SERVICE
Office 507-283-4901

AUCTION SCHEDULE
Currently Taking Consignments For Our Next Indoor Auction At The Duane Mulder Auction Center, Downtown Beaver Creek, MN. **Yes, we sell cars, pickups, trailers, campers & boats on these auctions.** Call 507-283-4901 Or 507-220-3558 To Get Your Items Consigned To This Auction.

Friday, August 26 – 10:00 A.M. – Fancy line of John Deere retirement farm equipment at auction. North Worthington, MN area. Steve & Margaret McCuen, owners.

Saturday, August 27 – 10:00 A.M. – Farm equipment, collector pickup, household and misc. items. Iona, MN area. Albert Berglund Estate.


Wednesday, August 31 – 10:00 A.M. – 39 acres of farm land at auction near Hills, MN. Stanford Nelson, owner

Saturday, September 10 – 10:00 A.M. – 4 JD tractors, farm equipment, antiques, household & misc. West Worthington area. Joseph Clark Estate & Darleen Clark, owner.

Thursday, September 15 – 5:00 P.M. – Collector tractors, shop equipment and acreage equipment at auction near Chandler, MN. Dorothy Klingenberg, owner

Friday, November 18 – 10:00 A.M. – 235 acres of farm land at auction located near Dundee, MN Located in Sections 12 & 13, Graham Lakes Township, Nobles County, MN. Irene L. Erickson Estate & John B. Leopold Trust.

DUANE MULDER – Auctioneer – Real Estate Broker – Certified Agricultural Appraiser. Office Phone 507-283-4901 - Cell Phone 507-220-3558.



www.Star-Herald.com

39 +/- Acres of Martin Twp, Rock Co. MN. Farmland
PUBLIC AUCTION

Wednesday August 31, 2016 Sale Time 10:00 am
More Information, Maps & Land Data at www.elbersauction.com
Location of Land: From Corner of bank in Hills go 2 miles East on Highway 270 Land will be sold at the farm at 280 80th Ave. Hills, MN. Watch for Auction Signs

LEGAL DESCRIPTION: Tract of land in NW ¼ of Section-25, Twp-101N, Range 46, Martin Township, Rock Co. MN. Subject to survey

GENERAL DESCRIPTION: This is a very productive 39 +/- acre tract that consists of 36.48 acres of tillable acres, 2.58 acres of roadway and ditches. According to Rock Co. Assessors Office this tract has a CER rating of 95.93. Tract does not contain a wetland. Predominate soil types are Trent silty clay loam, Splitrock silty clay loam and Whitewood silty clay loam.

CORN/SOYBEAN BASE & YIELD: The corn base on this tract is 18.51 acres with a PLC Yield of 151 bu. Soybean base of 17.9acres with a PLC Yield of 50 bu.

TAXES: Current Real Estate Taxes are \$628.00. Taxes reflect Agri- Homestead status. Taxes due and payable in 2016 will be paid by the seller.

POSSESSION: Land will be available for the 2017 crop year with possession given on Dec 1, 2016

TERMS: 15% down (non-refundable) immediately after auction. Buyer will be required to sign a purchase agreement at time of auction with the balance due and payable on or before Dec 1, 2016 when a clear and marketable abstract of title and warranty deed will be delivered to the buyer. Survey to be paid by the seller. Elbers Auction Service represents the sellers only in this transaction. Property is sold being offered "AS IS" with no warranty given or implied as to the condition or use of property. This property is offered as a cash sale with no financing contingency. Although every effort has been made to the accuracy of information given all potential buyers are encouraged to verify all information given. Property will be offered for sale subject to any easements, restrictions, reservations or right a way easement of record if any. Sale of property is subject to owner's confirmation. Any announcements made the day of auction will take precedence over any printed material. Informational booklets & maps are available on request, by contacting one of the auctioneers or by visiting website at www.elbersauction.com

AUCTIONEERS NOTE: It is a pleasure for us to offer this very attractive tract of farmland. This is an excellent opportunity to purchase a very highly productive tract of farmland that would be a great addition to your current farming operation or as in investment in some farmland. If you are in the market for a very desirable tract of farmland you don't want to miss this auction

Stanford Nelson, Owner
Vander Kooi Law Office, Attorney for seller
Elbers Auction Service
"Quality Auctions Since 1988"
P.O. Box 196 Hills, Minnesota 56138

Keith Elbers 507-962-3433 or 920-6131 www.elbersauction.com Duane Mulder 507-283-4901

Your source for daily news
Star-Herald.com

Find it here!

Here's My Card

Your Quick & Easy Guide to Area Businesses

Daves Gunsmithing

Dave Dobemecker
15677 310th St.
Adrian, MN 56110

Home: 507-967-2341
Cell: 507-920-7580
alprotect@gmail.com
www.dobysguns.com



We offer MN carry permit classes, firearms, ammunition and gunsmithing.
USCCA Certified Instructor, AGA Instructor.

Loosbrock Electrical Construction, LLC

Licensed • Bonded • Insured
Residential • Commercial • Industrial • Agriculture

Scott Loosbrock
Owner

507-360-5418 • scott@loosbrockelectric.com
www.loosbrockelectric.com

Call us for all your residential, commercial and farm wiring needs!

McClure Electric
Luverne, MN 507-283-4716
Alan M. Aanenson, owner

H&A
HEIDEBRINK & ASSOCIATES

Farm • Home • Business • Auto • Crop • Life • Health • Long Term Care

heidebrinkinsurance.com
Luverne, MN 56156 • 507-283-4085

M L ELECTRIC
Residential • Commercial • Farm Wiring • Trenching
Licensed • Bonded • Insured Mike Buss, Owner
507-449-8005

CLEVERINGA CONSTRUCTION
507-920-5631
• For All Your Building Needs • Additions • New or Remodel
www.cleveringaconstruction.com
Merlin Cleveringa 879 - 100th Ave., Luverne, MN
507-283-2698 Home Lic. # BC-20552185

McClure
PLUMBING, HEATING, AIR CONDITIONING, INC.
412 S. Kniss • Luverne, MN • 507-449-2828

Jerry Buss Lic. #002732PM **RAIN BIRD** **Carrier**
Troy Buss Lic. #005573PM **LENNOX** **BRADFORD WHITE**
SD # Luv-MN-R117-98-1262C
•Licensed, Bonded and Insured in Minnesota and South Dakota•

ROCK COUNTY CHIROPRACTIC

• Men, Women & Children's Health
• Custom Orthotics • Kinesiotape • Athletic Care • Massage Therapy • Work & Auto Injuries • Postural Restoration

DR. MICHAEL SMITH
Most Insurance Accepted
WWW.ROCKCOUNTYCHIROPRACTIC.COM
283-2561 • 103 E. MAIN, LUVERNE
Monday 7:30 a.m. - 6 p.m. • Tuesday 7:30 a.m. - 3 p.m.
Wednesday 7:30 a.m. - 6 p.m. • Thursday 7:30 a.m. - 1 p.m.
Friday 7:30 a.m. - 5 p.m.

MANN MADE
Custom Woodworking

CORY MANN
- custom cabinets
- furniture
- trim work
for any room of your home or office

942 110th Ave, Luverne
CELL: 507-920-3921 • HOME: 507-283-9854
mannmade99@gmail.com • mannmadecustomwoodworking.com

LUVERNE HEALTH & WELLNESS
Codie Zeutenhorst, D.C., CAc

• Acupuncture • Chiropractic Care
• Family Care • Sports Injuries
• Kinesiotape • Auto & Work Injuries

Acupuncture and Massage Available
Kris Van Der Brink M.T. & Amy Rosales M.T.

507.449.4400 www.luvernechiro.com
109 S. Freeman Ave. | Luverne, MN

Meulebroeck, Taubert & Co., PLLP
Certified Public Accountants
P.O. Box 685 • 109 S. Freeman • Luverne, MN 56156
507-283-4055
Experienced tax preparers with offices in Luverne, Pipestone, Marshall, Tyler & Lake Wilson

• Tax planning and preparation
• Accounting and bookkeeping services • Payroll services
• Quickbooks set-up and assistance

Dave Friedrichsen, Darryl Kanthak, Krista Kroon, Cayla Hamm, Amy Mollberg, Phyllis Vos, Janet Slieter and Lois Mulder

Southwestern Mental Health
Luverne

Consulting Psychiatrist
Individual, Family and Group Therapy
Psychological Evaluation
Employee Assistance Program
Public Education

Avera Partner

Crisis Hotline
1-800-642-1525
117 S Spring St, Luverne • 507-283-9511

Culligan
Better Water. pure and simple.®

water softeners • drinking water units
SALES • SERVICE • RENTALS
Luverne, MN Pipestone, MN
507-283-9105 507-825-2257

Rock County EYE CLINIC
Dr. Sandra Carman

507-283-2345

102 N. Freeman Ave., Luverne, Minnesota

FRANKEN CONSTRUCTION

Travis Franken, Lic #20627458 & Insured
1332 181st St., Luverne
507-920-8253
Call today for a FREE ESTIMATE.

REMODELING • NEW ADDITIONS • SIDING
DECKING • WINDOW/DOOR REPLACEMENT
GARAGE DOORS • CONCRETE
NO JOB IS TOO SMALL!!!

New Construction - Home Additions - Interior & Exterior
Home Remodeling - Windows - Siding - Drywall
30 Years Experience

Oehlerts & Son Construction
Kevin Oehlerts, Luverne,
www.OehlertsAndSonConstruction.com
507-673-2206

Den Herder Construction, Inc.
Jim Den Herder Cal Den Herder
P.O. Box 522, Luverne, MN 56156-0522
Phone 507-920-8917
License Number 1656

YOU'RE INVITED

Please Join Us For

Coffee at the Exchange

9:00 am - 11:00 am Exchange State Bank
310 Gabrielson Rd • Luverne, MN

2016 Coffee at the Exchange Schedule: Coffee & goodies served.

Tuesday, August 23, 2016

MARK YOUR CALENDAR & BRING YOUR FRIENDS.
ENJOY REFRESHMENTS &
FELLOWSHIP.

Exchange
STATE BANK
Local. Dependable. Strong.
Member FDIC

Bring in your
current policy for a
comparison today!

CATTNACH
INSURANCE AGENCY

South Hwy. 75, Luverne, MN
507-283-8383 or 1-800-258-4471
E-mail: info@cattnach.com
Website: www.cattnach.com



RIBBON CUTTING AND OPEN HOUSE MONDAY, AUGUST 29



**OPENING
SOON!**

FLOORING
Carpet – Vinyl – Tile – Engineered
Hardwood
Sales & Installation

APPLIANCES
Kitchen & Laundry
Sales – Installation – Service

See next week's Announcer and
Star Herald to find out what brands we carry



SCHOMACKER
FLOORING & APPLIANCE

202 East Main Street Luverne
(the old Style Shop)
507-227-2183



www.Schomackers.com | flooring@schomackers.com | appliances@schomackers.com

Loans, leases, and
crop insurance



Pat Barnett
866-601-0506

AgStar
Financial Services, ACA
AgStar.com

AgStar Financial Services is an equal
opportunity employer and provider.

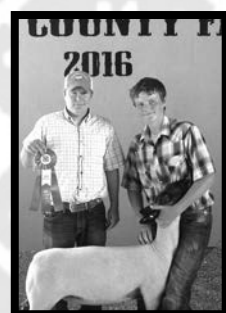
Read
Recycle
Reuse

Please recycle
your newsprint
when finished
with the paper.

2016 ROCK COUNTY FAIR



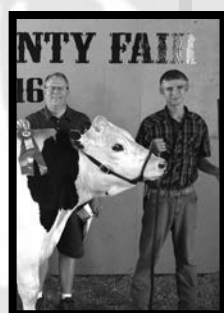
SALE OF CHAMPIONS



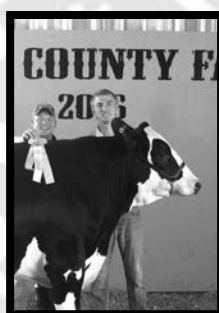
Christian Kruse
Overall Market Grand Champion-
Market Ewe
Mouw's Feed & Grain



Moriah Flanagan
Reserve Champion Market Goat
Eastern Farmer's & First
Bank & Trust



Joshua Raak
Grand Champion Dairy
Steer
Minnwest Bank



Andrew Raak
Reserve Champion Dairy
Steer
Chandler Coop



Adayla Rouzer
Grand Champion Market
Ewe
Luverne Farm Store



Payton Fick
Grand Champion Market
Heifer
R & S Sales

The Rock County 4-H
Families would like to
thank the following
businesses for their
support in 2016:

REISCH SCHOLARSHIP

Alliance Communications
Cleveringa Construction
Exchange State Bank
First Farmers & Merchants
Garry Overgaard
John & Kari Flanagan
L&D Leenders
Luverne Farm Store
Minnwest Bank
Nath Simmental
Nergaard Construction
Phil & Theresa Raak
Riggs Trucking
Schuneman Implement

DONATIONS

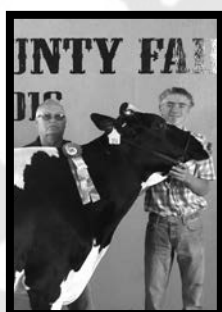
Agri-Energy LLC
Buffalo Ridge Insurance
Christianson Farms LLP
CHS Eastern Farmers
Garretson Food Center
New Horizon Farms LLP
New Vision
Sanford Clinic Luverne
Schwartz Farms

BUYERS

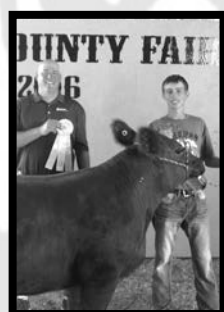
R & S Seed Sales
Riggs Trucking
Rock County American Dairy
Association
Sanford Clinic Luverne
Skattum Confinement & Superior
Buildings
Split Rock Creek Show Lambs
Sudenga Communications
Tim Johnson



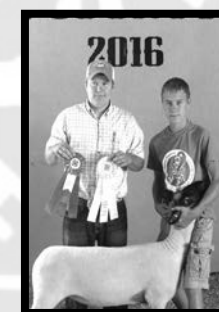
Mira Uithoven
Reserve Champion
Market Ewe
Cleveringa Construction



Jacob Raak
Grand Champion Holstein 2Yr
old Dairy
Rock County American Dairy
Association



Jared Leuthold
Reserve Champion Beef
Steer
Exchange State Bank



Hunter Baker
Reserve Overall Mkt. Champion-
Wether lamb
Mouw's Feed & Grain



Trista Baustian
Grand Champion
Market Ewe
Exchange State Bank



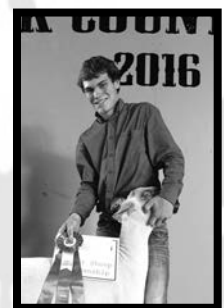
Cassie Flanagan
Grand Champion Market
Goat
Pipstone Livestock



Caleb Raak
Grand Champion
Fall Holstein Dairy
Pipstone Livestock



William Stegenga
Grand Champion Market Barrow
Skattum's Confinement
Systems



Riley Baker
Grand Champion Wether
Lamb
Split Rock Creek Show Lambs



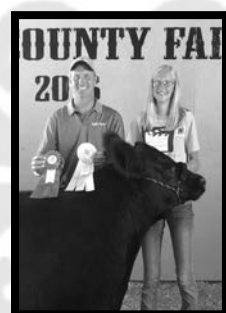
Aleck Schoeneman
Reserve Champion Market
Barrow
Luverne Farm Store



Dalton Popkes
Reserve Champion Beef
Steer
Chandler Feed & Grain



Jenna Schelhaas
Reserve Champion Market
Poultry
Express Ag



Whitney Elbers
Reserve Champion Supreme Beef
Chandler Feed & Grain



Tanner Baustian
Grand Champion Market Gilt
Exchange State Bank

Chandler Coop
Chandler Feed
Cleveringa Construction
Cragoe Realty
Eastern Farmers - Garretson
Exchange State Bank
Express Ag
Extended Ag
First Bank & Trust
First Farmers & Merchants Bank

Kevin Hunstad
Latham Insurance
Luverne Farm Store
McClure Electric
Minnwest Bank
Mouw's Feed & Grain
Nergaard Construction
Pioneer Hybrid
Pipstone Livestock Auction
Market

SUBSCRIBE TO THE STAR HERALD ONLINE EDITION!

Only \$13 for current Star Herald Print Subscribers.

Call 283-2333 for more details.



UP THE DAM CREEK

GRAND OPENING
street dance

SATURDAY, AUG. 27
9pm - 1am

NO COVER

Pirate Taxi

Downtown Beaver Creek
507-673-2528
3pm-Close Mon-Thurs
10am - 1am Fri & Sat

Dam It All!

Luverne Christian School Society

Pork Loin Supper

Wed. Sept. 8
5:30-7:30 p.m.

Luverne Christian Reformed Church
605 N Estey St.

Pork Loin Dinner \$9
Hamburger Dinner \$5

Proceeds will go to Luverne Christian School Society

Palace Theatre
Downtown Luverne

PETE'S DRAGON

FRI., AUG. 26 - 7 P.M.
SAT., AUG. 27 - 7 P.M.
SUN., AUG. 28 - 7 P.M.

Check our web site for updates
www.palacetheatre.us

Find us on Facebook

HickTown Mafia

FRIDAY
AUGUST 26
9 PM
to
12 AM

**HILLS BAR PRESENTS
HICKTOWN MAFIA
STREET DANCE**

UPCOMING EVENTS
DART TOURNAMENT OCT. 15

Hills Bar
507-962-3000

HOURS
MON-THUR
4-10PM
FRI 4-CLOSE
SAT 3-CLOSE

Co-Ed Softball Tournament
in Hardwick
Saturday, August 27

\$100 per team - 100% pay back

Call to register by Thursday, Aug. 25
Crystal Swenson.....507-920-6436 or 669-2009

Hardwick Fire Department
PORK CHOP FUNDRAISER

Friday, August 26 | 6 pm - 7:30 pm | Hardwick Memorial Hall

\$8 Pork Chop Meal
\$5 Rib Tickler Meal

Tickets available at the door

Enjoy a good meal for a good cause

THURSDAY, AUGUST 25

"Eddie the Eagle"
2PM

SPONSORED BY:
VARTQUIST
Sterling's

Afternoon Escape
one Thursday afternoon
each month at 2pm.
Admission is \$5

Puerto Vallarta
From \$1,312 per person
5 nights, all-inclusive
Roundtrip air from Sioux Falls
Roundtrip transfers
Select October - November dates
Pricing based on 2 adults
Call for more details!

Paris
From \$1,220 per person
5 nights hotel in Paris
Roundtrip air from Sioux Falls
Select October - November dates
Pricing based on 2 adults
Call for more details!

ALL ABOUT TRAVEL INC.
8-Year Winner! Layaway & Gift Certificates Available!
605-339-8911 • 1-800-390-6610
3801 S. Western Ave., Suite 103, Sioux Falls, SD
Open: Mon-Fri. 8 a.m. - 7 p.m. • Saturday 9 a.m. - 1 p.m.
www.AllAboutTravel.org www.facebook.com/AllAboutTravelInc
Helping You Find Your Personal Paradise!

CONTACT US @ 1-800-658-2327

SELECT UNIT SUPER SALE!

Amdahl Motors

WWW.AMDAHLMOTORS.COM

'16 CHEVY SILVERADO 2500HD LTZ CREW CAB
#76071, Duramax Diesel, Navigation, Heated & Cooled Leather Seats, 20" Wheels, all the right equipment!
MSRP: \$63,110
SALE PRICE \$51,995**

'16 GMC YUKON DENALI
#96051, AWD, 6.2L V8, DVD, NAV, Sunroof, 22" Wheels & Much More! Loaded
MSRP: \$75,505
SALE PRICE \$64,995**

'16 GMC CANYON SLT
#96066, Crew Cab, V6, Heated Leather, Cyber Gray Metallic, Driver Alert
MSRP: \$39,365
SALE PRICE \$36,216**

'16 GMC SIERRA 1500 SLT
#96043, Crew Cab, Onyx Black, Z71, 20" Chrome Wheels, Cocoa Dune Hd & Cld Ltr Seats, NAV, Driver Alert & More!
MSRP: \$53,930
SALE PRICE \$41,995**

'16 CHEVY MALIBU LT
#46015, Butte Red Metallic, Convenience & Technology Package, All New!
MSRP: \$26,790
SALE PRICE \$21,995**

'16 CHEVY CRUZE ECO
#46005, Enhanced Safety Package, Automatic, Driver Convenience Package & More!
MSRP: \$24,240
SALE PRICE \$19,995**

'17 CHEVY EQUINOX LT
#76086, AWD, Patriot Blue, Power Rear Lift Gate, Heated Seats, Remote Start & More!
MSRP: \$31,130
SALE PRICE \$24,995**

THE AREA'S BEST SELECTION OF USED CARS & TRUCKS!

'13 BUICK ENCLAVE PREMIUM #4123, AWD, White Diamond, Sunroof, Bluetooth, Super Clean, won't last long! SALE PRICE: \$33,978	'14 JEEP COMPASS LATITUDE #4404, AWD, Only 15,000 Miles! SALE PRICE: \$17,995	'13 GMC SIERRA 2500HD SLE #97008, Duramax Diesel, Crew Cab, Only 25,000 Miles! SALE PRICE: \$44,978	'11 CHEVY SILVERADO 2500HD LTZ #76038, Duramax Diesel, Leather, Only 25,000 Miles, Crew Cab, Sharp! SALE PRICE: \$44,978	'13 CADILLAC ATS #4124, Turbo White Frost, Low Mile, Sharp! SALE PRICE: \$20,978
'15 CHEVY IMPALA LIMITED LT #4111, Low Miles, Great Condition! SALE PRICE: \$15,995	'13 CHEVY MALIBU LT #4104, Only 25,000 Miles! SALE PRICE: \$14,995	'07 CHEVY TAHOE LTZ #96098, 20" Wheels, 4x4, 5.3L V8, High Miles, Excellent Condition! SALE PRICE: \$13,995	'14 CHEVY SILVERADO 1500 #76079, High Country 4x4, 20" Wheels, Black Fresh Trade! won't last long! SALE PRICE: \$40,978	'16 CHRYSLER TOWN & COUNTRY #4127, Touring DVD Player, Power Sliding Doors, Power Rear Liftgate, Leather's More! SALE PRICE: \$24,978

SEE COMPLETE LISTINGS & PRICES AT www.amdahlmotors.com

SEE COMPLETE INVENTORY & Apply Online for Pre-Approved Financing @ amdahlmotors.com

Amdahl Motors

WWW.AMDAHLMOTORS.COM

CONTACT US @ 1-800-658-2327

HOURS: Monday, Tuesday, Wednesday, Friday 9am to 5:30pm, Thursday 9am to 8pm, Saturday 9am to 4pm
8am to 12pm, 12pm to 5:30pm, 5:30pm to 8pm, 8pm to 11pm, 11pm to 12pm

Mark's PLUMBING, HEATING AND A/C, LLC.

Lic.# PC644664 Master Plumber Lic#066849-PM

608 W. Hatting, Luverne • Mark Kurtz, owner

507-283-9245

A.O. Smith Water Heaters Gas & Electric

MOEN Faucets

bryant Heating & Cooling Systems

Is Your Family Eligible?

EARLY LEARNING SCHOLARSHIPS ARE AVAILABLE!

Scholarship eligibility is based on family income.

Contact—
Karen DeBoer, Region 8 Child Care Aware
Southwestern Minnesota Opportunity Council, Inc.
1106 3rd Avenue, PO Box 787
Worthington, MN 56187

1-800-658-2444

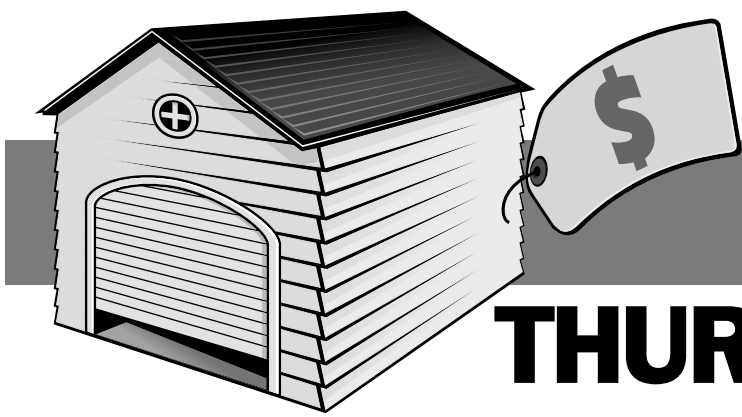
Email: kdeboer@smoc.us

To learn more go to—
education.state.mn.us
or parentaware.org

EARLY LEARNING SCHOLARSHIPS

Trust us, we read it in the Star Herald.





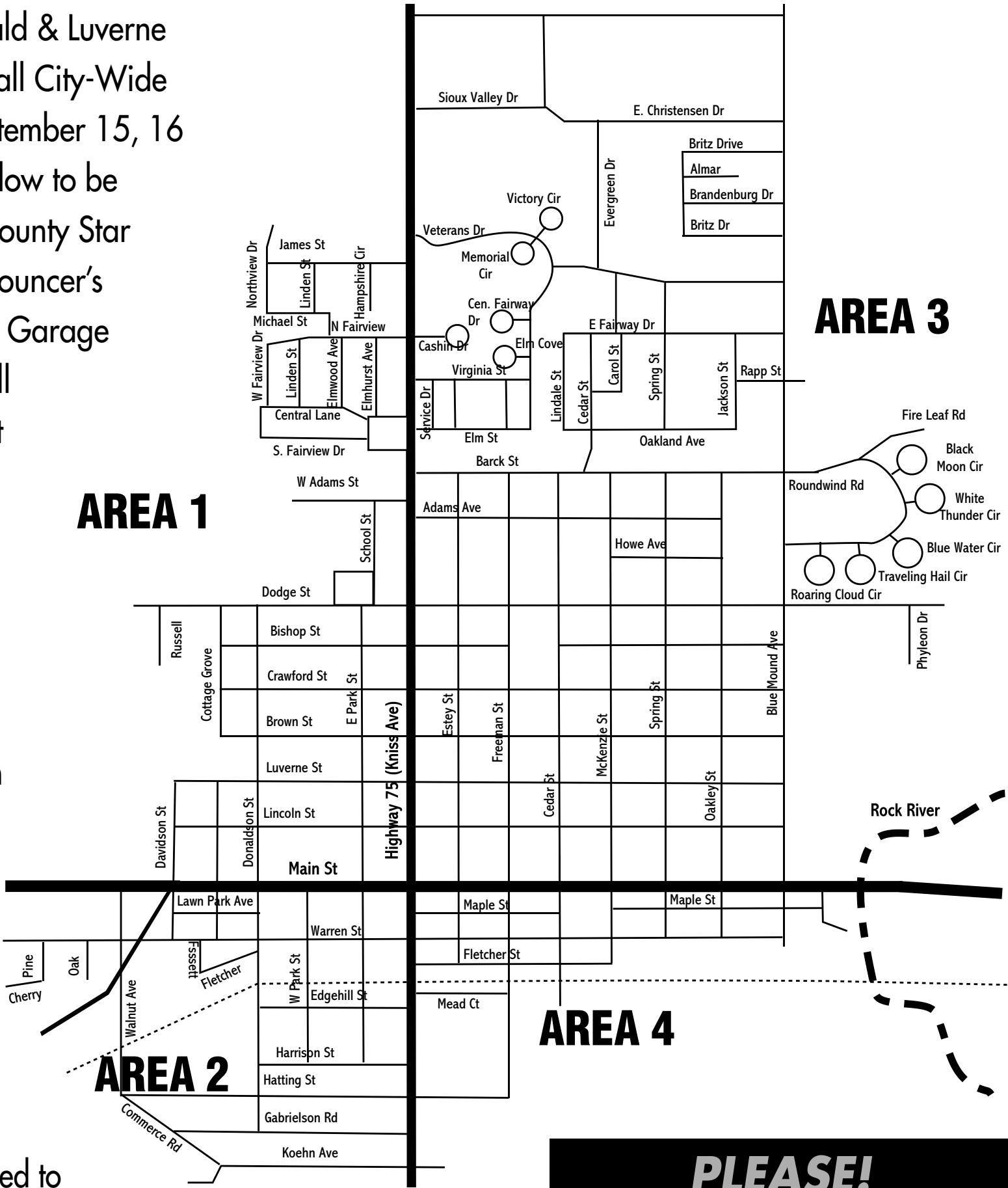
LUVERNE FALL CITY-WIDE GARAGE SALE

THURS, FRI & SAT, SEPTEMBER 15, 16, 17

Rock County Star Herald & Luverne Announcer's Annual Fall City-Wide Garage Sales are September 15, 16 & 17. Use the form below to be included in the Rock County Star Herald & Luverne Announcer's Annual Fall City-Wide Garage Sale, or stop by and fill one out at our office at 117 W. Main St.

Ads must be paid for before they will run.

All of the garage sale ads will be published in the *Rock County Star Herald* and *Luverne Announcer* with a Garage Sale header & September 15, 16 & 17 date on top of the page - you don't need to include these in your ad. Also included will be a map divided into 4 areas. The garage sales will be divided by area on the page to assist those going to your sale.



**PLEASE!
LIST THE AREA
YOUR ADDRESS
FALLS IN!**

Dividing lines are Hwy. 75 (Kniss Ave.)
& Main Street – see map

****** NOTE: An additional \$4 will be charged for an additional address placed in an ad. Limit 2 addresses per coupon. ******

Your ad will look like this:
000 Any Street
Sat., 00 am - 00 pm
Group rummage sale! Children's and adult clothing, toys and other miscellaneous items. Also, baked items and crafts.

Please list your address first and time of the sale second! These words will be counted as part of the ad. Also, specify if sale will be Thursday, Friday & Saturday, or Saturday only.

ADVERTISING DEADLINE:
Tues., Sept. 6
AT NOON SHARP!

****** CLIP & USE THIS COUPON ******
All ads will run two times -
SEPT. 11 ANNOUNCER & SEPT. 15 STAR HERALD
20 words \$15.00 25 words \$17.50 30 words \$20.00
Please mail your check with this coupon! PAYMENT REQUIRED WHEN COUPON IS TURNED IN!

Address _____

Day(s) & Time(s) _____

Ad copy _____

NAME _____

PHONE _____ AMT. PAID _____

CC# _____

MC _____ Visa _____ Disc. Exp. Date _____

SIGNATURE _____

PLEASE CIRCLE AREA OF SALE!

1 2 3 4

The Star Herald is not responsible if no area is circled!

MAIL OR DROP OFF AT:
Rock County Star Herald
117 W. Main Street
P.O. Box 837
Luverne, MN 56156

Questions?
Call 507-283-2333

the classifieds

To place a classified ad in the Luverne Announcer, call 283-2333, stop by our office at 117 W. Main, Luverne, or visit www.star-herald.com.



AGRICULTURAL

We have several crews of rock pickers and we also do any type of farm work. Call 712-943-2084. (tc)

WINDOWS

We custom build and install Energy Star Therm-O-Loc Windows. Call Mike at Adrian Glass for a free in-home demonstration and estimate. 101 E. Pearl, Adrian, MN 56110. 507-483-2228 or 605-770-7677 or email mbyler@santel.net. (tc)

FOR SALE

For sale: Great investment opportunity. Clean, well-cared for 4-plex. \$175k. Serious buyers only. 605-553-4255. (8.14-9.1)

CHILD CARE

Daycare: Licensed daycare has openings available for ages ranging from 12 months to 11 years of age. Please call 507-920-8449 for more details. (tc)

WANTED

Buying old cars, trucks, scrap iron, old farm equipment, tin, wire. Ericksen Salvage, Charlie Ericksen, 605-254-4654. (tc)

RENTALS

In Luverne one bedroom apartment, stove and refrigerator furnished. Off street parking. No pets or smoking. \$400/month, utilities included. Security deposit and references. 605-370-2251 texts/calls. (8.14-9.1)

For Rent: 46' x 56' insulated new building, three overhead doors sized 10' x 10'. Located on southwest corner of Luverne. Room for an office if needed. Call 507-920-6424. (tc)

Available for rent now! Large two-bedroom upper level apartment. Close to downtown and easy access to everything. Security deposit required. Utilities included in rent. Call Mary at 605-366-6514. (8.4-8.21)

RENTALS

Oakwood Apartments

401 Oak St., Ellsworth

• 1 Bedroom Unit Available

Unit Available
Water, Sewer &
Garbage Included.

Rent Based on Income
AVAILABLE IMMEDIATELY
Van Binsbergen & Associates, Inc.
320-269-6640 ext. 22
Equal Housing Opportunity

www.vanblc.com



BLUE MOUND TOWER



Luverne HRA • Blue Mound Tower
216 McKenzie Street
Luverne, MN 56156

507-283-4922

- All Ages Welcome
- Close to Senior Dining
- Close to Minnesota West College
- Income Based

- Handicap Accessible
- Pet Friendly
- Smoke Free
- Secure Entry System
- On Site Laundry
- Utilities included

**Announcer
Printing**
283-2333

CADNET NATIONAL ADVERTISING NETWORK



AUTOS WANTED

CARS/TRUCKS WANTED!!! ALL MAKES/MODELS 2000-2016! ANY CONDITION. RUNNING OR NOT. TOP \$\$\$ PAID! FREE TOWING! WE'RE NATIONWIDE! CALL NOW: 1-888-985-1806

EDUCATION

AIRLINE MECHANIC TRAINING - GET FAA CERTIFICATION. NO HS DIPLOMA OR GED - WE CAN HELP. APPROVED FOR MILITARY BENEFITS. FINANCIAL AID IF QUALIFIED. JOB PLACEMENT ASSISTANCE. CALL AVIATION INSTITUTE OF MAINTENANCE 866-453-6204

HEALTH & FITNESS

VIAGRA 100MG AND CIALIS 20MG! 50 PILLS \$99.00 FREE SHIPPING! 100% GUARANTEED. CALL NOW! 1 -866-312-6061 HABLAMOS

ESPANOL

MISC. FOR SALE

KILL BED BUGS! BUY HARRIS BED BUG KILLERS/ KIT. HARDWARE STORES, THE HOME DEPOT, HOMEDEPOT.COM

WANTED TO BUY

WANTS TO PURCHASE MINERALS AND OTHER OIL AND GAS INTERESTS. SEND DETAILS TO P.O. BOX 13557 DENVER, CO. 80201

CASH PAID- UP TO \$25/BOX FOR UNEXPIRED, SEALED DIABETIC TEST STRIPS. 1-DAY PAYMENT. 1-800-371-1136

MISCELLANEOUS

MAKE A CONNECTION. REAL PEOPLE, FLIRTY

CHAT. MEET SINGLES RIGHT NOW! CALL LIVELINKS. TRY IT FREE. CALL NOW: 1-888-909-9905 18+.

ENJOY YOUR OWN THERAPEUTIC WALK-IN LUXURY BATH. GET A FREE IN-HOME CONSULTATION AND RECEIVE \$1,750 OFF YOUR NEW WALK-IN TUB! CALL TODAY!!! (800) 987-1543

STRUGGLING TO GET INTO A CAR, HOUSE, OR APARTMENT BECAUSE OF YOUR CREDIT SCORE? CALL TO GET A FREE CREDIT SCORE, REPORT, AND CONSULTATION. 800-953-5979

ADVERTISE TO 10 MILLION HOMES ACROSS THE USA! PLACE YOUR AD IN OVER 140 COMMUNITY NEWSPAPERS, WITH CIRCULATION TOTALING OVER 10 MILLION HOMES. CONTACT INDEPENDENT FREE PAPERS OF AMERICA IFPA AT DANIELLEBURNETT-IFPA@LIVE.COM OR VISIT OUR WEBSITE CADNETADS.COM FOR MORE INFORMATION
READER ADVISORY: THE NATIONAL TRADE

ASSOCIATION WE BELONG TO HAS PURCHASED THE ABOVE CLASSIFIEDS. DETERMINING THE VALUE OF THEIR SERVICE OR PRODUCT IS ADVISED BY THIS PUBLICATION. IN ORDER TO AVOID MISUNDERSTANDINGS, SOME ADVERTISERS DO NOT OFFER EMPLOYMENT BUT RATHER SUPPLY THE READERS WITH MANUALS, DIRECTORIES AND OTHER MATERIALS DESIGNED TO HELP THEIR CLIENTS ESTABLISH MAIL ORDER SELLING AND OTHER BUSINESSES AT HOME. UNDER NO CIRCUMSTANCE SHOULD YOU SEND ANY MONEY IN ADVANCE OR GIVE THE CLIENT YOUR CHECKING, LICENSE ID, OR CREDIT CARD NUMBERS. ALSO BEWARE OF ADS THAT CLAIM TO GUARANTEE LOANS REGARDLESS OF CREDIT AND NOTE THAT IF A CREDIT REPAIR COMPANY DOES BUSINESS ONLY OVER THE PHONE IT IS ILLEGAL TO REQUEST ANY MONEY BEFORE DELIVERING ITS SERVICE. ALL FUNDS ARE BASED IN US DOLLARS. TOLL FREE NUMBERS MAY OR MAY NOT REACH CANADA.

Midwest Free Community Papers Midwest Classifieds

Call 507-825-3333 or 800-325-6440 to place your Minnesota Free Community Paper classified ad.

AUTOMOBILES/MOTORCYCLES WANTED

MOTORCYCLES: TOP CASH PAID! For Old Motorcycles! 1900-1979. DEAD OR ALIVE! 920-371-0494 (MCN)

PETS/PET SUPPLIES

GERMAN SHEPHERD PUPS AKC OFA Excel Temp. Import Stock. Guaranteed. 715-537-5413 www.jerland.com #268001-DS (MCN)

ADOPTION

PREGNANT? CONSIDERING ADOPTION? Call us first. Living expenses, housing, medical, and continued support afterwards. Choose adoptive family of your choice. Call 24/7. 855-390-6047 (MCN)

AUTOMOBILES

DONATE YOUR CAR, TRUCK OR BOAT TO HERITAGE FOR THE BLIND. Free 3 Day Vacation, Tax Deductible, Free Towing, All Paperwork Taken Care Of. 1-800-283-0205 (MCN)

DONATE YOUR CAR TO CHARITY. Receive maximum value of write off for your taxes. Running or not! All conditions accepted. Free pickup. Call for details. 855-752-6680 (MCN)

EMPLOYMENT/HELP WANTED

PAID IN ADVANCE! MAKE \$1000 Weekly!! Mailing Brochures From Home. Helping homeworkers since 2001. No Experience Required. Start Immediately! www.centralmailing.net (VOID IN SD, WI) (MCN)

TRUCK DRIVERS. CDL-A Company Drivers and Owner Operators. Great pay and benefits. Driver friendly. All miles paid. Many bonuses. Home when needed. Nice equipment. Paid weekly. WWW.MCFGTL.COM Call now 507-437-9905 (MCN)

Over the Road carrier seeking experienced drivers. Midwest and west coast, no east coast. Drivers average 3,000+ miles per week, loaded and empty miles paid. Call recruiting 1-800-645-3748 www.gifttruck.com (MCN)
FINANCIAL

Are you in BIG trouble with the IRS? Stop wage & bank levies, liens & audits, unfiled tax returns, payroll issues, & resolve tax debt FAST. Call 888-606-6673 (MCN)

STUDENT LOAN PAYMENTS got you down? We can help reduce payments and get finances under control, call: 866-871-1626 (MCN)

FOR SALE

Trailer Sale! 14,000 lb. w/ dovetail Skidloader trailers "FREE 10 ply Spare tire" and Save \$400.00 off normal pricing. 10 different sizes of DUMP trailers. 6'X12' V-nose, ramp door Cargo \$2,750.00; 7'X16' \$4,169.00; 515-972-4554 www.FortDodgeTrailerWorld.com for inventory & prices! (MCN)

HEALTH & MEDICAL

Got Knee Pain? Back Pain? Shoulder Pain? Get a pain-relieving brace at little or NO cost to you. Medicare Patients Call Health Hotline Now! 1- 800-604-2613 (MCN)

ATTENTION: VIAGRA AND CIALIS USERS! A cheaper alternative to high drugstore prices! 50 Pill Special - \$99 FREE Shipping! 100 Percent Guaranteed. CALL NOW: 1-800-795-9687 (MCN)

LIVING WITH KNEE OR BACK PAIN? Medicare recipients may qualify to receive a pain relieving brace at little or no cost. Call now! 844-668-4578 (MCN)

Stop OVERPAYING for your prescriptions! SAVE! Call our licensed Canadian and International pharmacy, compare prices and get \$25.00 OFF your first prescription! CALL 1-800-263-4059 Promo Code CDC201625 (MCN)

Viagra!! 52 Pills for Only \$99.00! Your #1 trusted provider for 10 years. Insured and Guaranteed Delivery. Call today 1-888-403-7751 (MCN)

IF YOU HAD HIP OR KNEE REPLACEMENT SURGERY AND SUFFERED AN INFECTION between 2010 and the present time, you may

be entitled to compensation. Call Attorney Charles H. Johnson 1-800-535-5727 (MCN)

MISCELLANEOUS

ALL THINGS BASEMENTY! Basement Systems Inc. Call us for all of your basement needs! Waterproofing, Finishing, Structural Repairs, Humidity and Mold Control. FREE ESTIMATES! Call 1-800-640-8195 (MCN)

A PLACE FOR MOM. The nation's largest senior living referral service. Contact our trusted, local experts today! Our service is FREE/ no obligation. CALL 1-800-442-5148 (MCN)

Switch to DIRECTV and get a \$100 Gift Card. FREE Whole-Home Genie HD/DVR upgrade. Starting at \$19.99/mo. New Customers Only. Don't settle for cable. Call Now 1-800-203-4378 (MCN)

19.99/mo. for DIRECTV - HD Channels + Genie HD DVR + 3 months FREE HBO, SHOW, MAX & STARZ + FREE NFL Sunday Ticket! Call Now 1-888-552-7314 (MCN)

ADT Security protects your home & family from "what if" scenarios. Fire, flood, burglary or carbon monoxide, ADT provides 24/7 security. Don't wait! Call Now! 1-888-607-9294 (MCN)

GET HELP NOW! One Button Senior Medical Alert. Falls, Fires & Emergencies happen. 24/7 Protection. Only \$14.99/mo. Call NOW 1-888-840-7541 (MCN)

Life Alert. 24/7. One press of a button sends help FAST! Medical, Fire, Burglar. Even if you can't reach a phone! FREE Brochure. CALL 800-306-1404 (MCN)

DISH TV 190 channels plus Highspeed Internet Only \$54.94/mo! Ask about a 3 year price guarantee & get Netflix included for 1 year! Call Today 1-800-390-3140 (MCN) SAVE on internet and TV bundles! Order the best exclusive cable and satellite deals in your

area! If eligible, get up to \$300 in Visa Gift Cards. CALL NOW! 1-800-925-0146 (MCN)

FAST Internet! HughesNet Satellite Internet. High-Speed. Avail Anywhere. Speeds to 15 mbps. Starting at \$59.99/mo. Call for Limited Time Price - 1-800-715-1644 (MCN)

Exede High Speed Internet. Plans from \$39/mo. Blazing Fast Broadband in areas cable can't reach. Great for business or home. We Install Fast. 1-888-800-8236 (MCN)

Free Pills! Viagra!! Call today to find out how to get your free Pills! Price too low to Mention! Call today 1-877-560-0997 (MCN)

CASH PAID for unexpired, sealed DIABETIC TEST STRIPS! 1 DAY PAYMENT & PREPAID shipping. HIGHEST PRICES! Call 1-888-389-0695. www.cash4diabeticsupplies.com (MCN)

Attention: VIAGRA and CIALIS USERS! A cheaper alternative to high drugstore prices! 50 Pill Special - \$99 + FREE Shipping 100% guaranteed. CALL NOW: 855-982-0447 (MCN)

TEMPORARY GRAIN STORAGE. Beat the long unloading lines at the Terminal. Go On Farm with On Store's Innovative new low cost, short term aerated storage system. 20,000 and 50,000 bushel options. Act now to insure 2016 Harvest Installation. Call Scott Gladish 770-330-9592, scottg@onfarmmonstore.com or visit www.onfarmmonstore.com for details, pricing, and local dealer information. (MCN)

PERSONALS

MEET SINGLES RIGHT NOW! No paid operators, just real people like you. Browse greetings, exchange messages and connect live. Try it free. Call now: 800-357-4970 (MCN)



DO YOUR PART:
RECYCLE!

To place a classified ad in the Luverne Announcer, call 283-2333, stop by our office at 117 W. Main, Luverne, or visit www.star-herald.com.

the classifieds

CARDS OF THANKS

It is difficult to find words to express how thankful we are for your prayers, acts of kindness and support during this time of loss. A special thank you to the first responders, Rock County Ambulance crew as well as the Sanford doctors and nurses. We would also like to thank Dingmann Funeral Home staff, Pastor Cole McCormick, Pastor Ron Nichols and the women of Grace Lutheran who served the luncheon. We are truly blessed to be part of such a wonderful and caring community.

Laura and Eric Oldre
Barb Oldre
Sharan and Gary Honermann and family
Bryce and Ellie Oldre and family
(8.21-8.25)

The family of Clifford Anderson would like to thank everyone for their expressions of sympathy by way of cards, gifts, food, flowers, and your comforting words. A special thank you to the Tuff Home Staff for their excellent care and to Pastor Ron and Pastor Cole for their visits. May God Bless you all.

Bernice Anderson
Lyle (Linda) Anderson
Becky (Lowell) Siekmann
Randy (Jill) Anderson and Families
(8.18-8.21)

MISCELLANEOUS

HAVE A UNIQUE SERVICE OR BUSINESS? Get the word out to over 1.4 million households. Call WIDE AREA CLASSIFIEDS today, 507-359-7326. (tc)

CALL
RICK OR CHANTEL
TO ADVERTISE IN
THE ANNOUNCER!
283-2333

AM
AVIATION INSTITUTE OF MAINTENANCE

Get FAA approved maintenance training at campuses coast to coast. Job placement assistance. Financial Aid for qualifying students. Military friendly.

Call Aviation Institute of Maintenance
800-481-7894

SERVICES

ELECTROLUX
Central Vacuum • Upright Vacuum
Cordless Vacuum
Mixer • Blender • Supplies
ELAINE BOLT
828-448-7771 Edgar, MN

Cash for Junk Vehicles
CALL TODAY!
(712) 580-2886
Grab & Go Auto Salvage, LLC
220 10th Ave. S.E.
Spencer, IA
TOWING AVAILABLE

PRO PUMPING & AG SERVICES, LLC
CUSTOM DRAGLINE MANURE PUMPING
FOR FREE ESTIMATE
CALL 605-216-8932

DD Backhoe Service
Doug Dooyema
Hydants, waterline repairs, life line repairs, small tile jobs, and hole digging
Call 507-283-8357 or Call 507-220-8218

Tree Tech Inc.
Luverne, MN
507-283-8552
507-920-6424 cell
tree removal
tree trimming
stump grinding
tree moving

EMPLOYMENT

The Quality Inn Motel in Luverne has immediate part-time and full-time openings available for housekeeping, front desk, and maintenance. All shifts available. Under new management. Please stop in at The Quality Inn located on Highway 75 in Luverne. EOE. (8.21-9.8)

Adrian Public School is accepting applications for an Elementary Secretary. This is a part time position consisting of 1720 hours (August through June school year). The preferred applicant will have excellent interpersonal communication and customer service skills, be highly organized and able to handle multiple tasks. Be highly proficient with technology in regards to the use of; Microsoft Word, Excel, Google Docs, software information systems and be able to do general website updates, use a phone system, operate fax and copier machines. In addition, the preferred applicant will have two or more years of clerical training in office management and/or two or more years of work experience as a secretary. Pay rate ranges between \$14.65 and \$15.65 depending on education and work experience. The position is open until filled and the District will determine the start-date. Interested applicants must submit a letter of application complete the district application along with three letters of recommendation to Mr. Roger Graff Superintendent, PO Box 40, Adrian, MN 56110. Adrian Public Schools is an equal opportunity employer. (8.18-9.4)

Adrian Public School is currently hiring for a Long Term Substitute for a Second Grade Teacher beginning approximately October 3 through January 2nd, 2017. Interested applicants, please send letter of application, resume, current letters of recommendation, a copy of MN teaching license, and a completed district application to Mr. Roger Graff, Superintendent of Schools, which can be found on our district website at www.isd511.net. (8.18-9.4)

Rapids Chiropractic in Rock Rapids, IA is looking for a Massage Therapist. Please contact Dr. Reynolds at 712-472-2481 if interested. (8.7-8.25)

EMPLOYMENT

New Prairie Insulation of Beaver Creek has a full-time Insulation Installer position available. Monday through Friday, health insurance, vacation, holiday, bonus opportunities. Will train. Call Dean at 605-376-3006 or 507-673-2548. (tc)

Nursing Assistant: Parkview Manor has openings for part-time nursing aides with benefits to include: health insurance, public retirement plan, and holiday pay. New wages \$11.90/hr. or more with experience. \$2000 scholarships available for students. Will provide training or pay for experience. Contact Darnell Krull, 308 Sherman Ave. Ellsworth, MN 56129 or call 507-967-2388. (tc)

Registered Nurse/LPN-Parkview Manor, a municipal skilled nursing facility is accepting applications for a part-time charge nurse position. Wages commensurate with experience. \$2000 scholarship available for students. Benefits include vacation, holiday, and PERA retirement plan. Contact Darnell Krull 308 Sherman Ave., Ellsworth, Mn 56129 or call 507-967-2482. (tc)

SON-D-FARMS ADRIAN

is hiring General Farm, Hog, Field Work, Truck Driver, Maintenance person, Farm Shop Mechanic & Farm Delivery Person. Experience wanted but willing to train. PTO benefits. Call (507) 483-2245, 370-1590 or e-mail office@sondfarms.com

The Tuff Memorial Home has a need for a full-time **Evening Cook**. Experience preferred but will provide training if necessary. If interested, contact Alex Dysthe at 507-962-3275 or email adysthe@tuffmemorialhome.com.

Full Benefits
Competitive Wage
Pension Plan
Friendly Atmosphere



TUFF MEMORIAL HOME
"A Home With a Heart"

EMPLOYMENT

MAKE THE WISE CHOICE!



RECYCLE THIS NEWSPAPER!

EMPLOYMENT



TUFF MEMORIAL HOME
"A Home With a Heart"

The Tuff Memorial Home is currently hiring for a full-time **CNA**. Experience preferred. If interested, contact Alex Dysthe at 507-962-3275. or email adysthe@tuffmemorialhome.com

Competitive Wage
Full Benefits
Pension Plan
Friendly Atmosphere

MAINTENANCE/CUSTODIAN SUPERVISOR POSITION

The Luverne Housing and Redevelopment Authority is accepting applications until 3 p.m. Friday, August 26, 2016, for a full-time maintenance/custodial position at the Blue Mound Tower. Individual must be able to work independently and efficiently; must be task orientated, and have a strong, positive work ethic. High School Diploma or GED required

Applicants must have a valid driver's license.
Criminal background check will be required.

Applications are available at Blue Mound Tower Business Office
216 N. McKenzie Street, Luverne, MN 56156
or by calling 507-283-4922.

The Luverne HRA is an Equal Opportunity Employer



BLUE MOUND TOWER

HELP WANTED Independent Living (IL) Specialist

Southwestern Center for Independent Living (SWCIL), a community-based, non-profit organization serving people of all ages and disabilities is seeking an Independent Living (IL) Specialist. Persons with disabilities constitute more than 50% of SWCIL's governing board and employees in decision-making and staff positions. Persons with disabilities and veterans are strongly urged to apply. Full time: 40 hours per week during normal business hours. Must have knowledge of disabilities and their characteristics, ability to work with diverse populations of individuals with disabilities, have reliable transportation, and pass a DHS background study. Minimum qualifications require a four year degree in a human/social services or related field or a two year degree in a human/social services field combined with one year of experience in a disability related position. Responsibilities include independent living skills training, community activity development and other IL services. Position requires travel within the local region. SWCIL provides staff orientation and in-depth training. Wage range based on experience and qualifications. Competitive benefits offered. Review of applications begins immediately until filled. To apply, send cover letter, resume and 3 references to: ILS Program Coordinator, SWCIL, 109 S. 5th Street, #700, Marshall MN 56258 or swcil@swcil.com. SWCIL is an equal opportunity employer.

MN VETERANS HOME

Account Clerk

Applications are being accepted for a part-time Account Clerk (average of 30 hours per week). This position is responsible for reviewing and processing all payroll related transactions, employee expense documents and other related clerical tasks and backup support in supply and accounting. Excellent benefit package. Hourly wage: \$16.16-\$21.42.

View complete job announcement and apply online: <https://mn.gov/careers>. Deadline to apply: August 29, 2016.
For further information, call 507-283-6211.
EEO/AAO



Celebrate your Wedding with the Star Herald and Announcer!

- Bridal Shower Announcements
- Wedding and Engagement Announcements

Place your announcement today!

Call 283-2333
www.star-herald.com



MAINTENANCE TECHNICIAN

Minnesota Soybean Processors (MnSP), Brewster, MN, has an opening for a **Maintenance Technician**. This is a full-time, M-F position. Must be willing to work overtime when needed. Applicants must possess excellent mechanical skills including; fabrication, welding, cutting, lubricating, repair of equipment such as; pumps, gear boxes, airlocks, fans/blowers, valves, conveyors.

— Full Benefit Package Available —

Apply in person Monday-Friday, 8:00 a.m. to 4:30 p.m.

MnSP 121 Zeh Avenue
P.O. Box 100
Brewster, MN 56119

Or apply online at www.mnsoy.com

MINNESOTA SOYBEAN PROCESSORS is an Equal Opportunity Employer
Pre-employment exam and drug screening is required.
EEOC/AA/ADA



Sanford Luverne is Hiring For a Supplies Representative—Full Time

Want to be part of an award winning healthcare team?

The Supplies Representative is responsible for receiving, unpacking, storing and distributing supplies. Also assists with maintaining an appropriate level of inventory. Experience in a patient care setting, inventory and basic office skills preferred. Drivers license is required. This position is full time, M-F 7:30am-4pm.
A full benefits package is included.

Apply today! Your career at Sanford is waiting!

Please apply online at www.sanfordhealth.org Click on "careers" at the top of the page.

SANFORD
Luverne



Ketterling Services, Inc.

401 S. Cedar St. • Luverne, MN • 507-283-2863 • www.ketterlingservicesinc.com
Hours: Tues.-Fri. 8:30 a.m. to Noon & 1 p.m. to 5 p.m. Sat. 8:30 a.m. to Noon

Roll-Off Service for Building Demo & Remodeling

SANITATION:
Commercial
Residential
Rural



Monthly - Weekly - Daily

RECYCLING:
Collection
Dropoff



Orv & Sons, Inc.

Plumbing ~ Heating ~ Cooling
507-967-2464

Office hours: M-F 7:30-noon & 1-5 ~ Sat 7:30-9 a.m.

*Licensed for pump installation, sewer installation & Backhoe services

*Roto-rooter, Pipe Location & Camera

Inspection System

*Oxyblast-water treatment Product

*Lennox Furnaces & Air Conditioners

****NOW ACCEPTING CREDIT CARDS****

308 S. Broadway St.
Ellsworth, MN

Find us online! star-herald.com

2016'S MULES ARE HERE

2016 ATVS
ARE
HERE



Luverne
Kawasaki

Let the Good Times Roll™

101 W. Maple, Luverne, MN 56156

507-283-1800

The Daily News of Rock County
STAR-HERALD.COM

Why have three policies when you could have

#OnePolicy

Your ride should be relaxing. Easy. So should your insurance. That's why Grinnell Mutual offers a single Personal Auto policy for your cars, trucks, RVs, and ATVs.



Ashley Connell, Sara VanNieuwenhuizen, Shirley Top

Check with your local agent about auto insurance that makes life easy.

GRINNELL MUTUAL
SINCE 1909

Kozlowski

Insurance Agency & Financial Services, Inc.

212 S. Kniss, Luverne, MN • (507) 283-3704 or (877) 631-3704
Pipestone Toll Free (888) 825-3366 www.kozlowski-insurance.com

DeBoer
EDGERTON
507-442-4341

CHEVY
SUMMER BONUS
TAG

FIND YOUR TAG.
CHOOSE ONE OF THESE DEALS.



2016 CHEVROLET COLORADO
4WD LT #16131



2016 CHEVROLET COLORADO
4WD, CONVENIENCE PKG #16132



2016 CHEVROLET SILVERADO 3500HD
LT, Z71 #1636



2014 CHEVROLET IMPALA
LT, SUNROOF, ALUM WHEEL, 59K #A1602A



2011 CHEVROLET IMPALA
LS, 57K #1617B



2013 CHEVROLET EQUINOX
LT, FWD, ALUM WHEELS, 44K #A1608

GM Certified
USED VEHICLES

CHEVROLET
SILVERADO

Auto
Check

www.deboerchev.com



Dave Hup
Realtor/Owner
507-920-5910
dave.landandhome@gmail.com

Billy Cowell
Realtor/Owner
605-254-5450
billy.landandhome@gmail.com

For all our listings visit
LuverneLandandHome.com

RE/MAX Land and Home
507-449-6111

117 East Main Street • Luverne, MN
Each Office Independently Owned and Operated

Featured
Listing

1120 160th Ave, LUVERNE



\$265,900

- Acreage
- Wonderful country living close to town
- Right off black top

Fly-In or Drive-In



Pancake Breakfast



Saturday, September 10, 2016

7:00 a.m.—12:00 p.m.

Quentin Aanenson Field
Luverne Municipal Airport



**Free pancake breakfast for pilots
and classic car owners or drivers!**

Other attractions to enjoy:

Skydive Adventures

Inflatables for kids

Air Ambulance on Display

Aircraft on Display



Luverne
MINNESOTA
Love the life!



Sum•mer /n./

- The hotter half of the year.

Beat the heat with Star-Herald.com

2016 Minnesota Renaissance Festival NEW FOR 2016!

- Wizard's School Zip Line
- King's Karpool Competition
- Renaissance Bingo
- Bloody Mary Bar
- Whiskey & Scotch Tastings
- 250 Artisan Booths for Endless Shopping
- Over 50 FREE Family Activities
- 16 Stages of Entertainment
- Food Fit for a King
- Live Armored Jousting
- Mermaids, Fairies & more

Open Weekends August 20 - October 2nd, 2016
Plus Labor Day & Festival Friday, Sept. 30th
9am to 7pm • Rain or Shine • (952) 445-7361

FREE Parking!

RenaissanceFest.com

Discount Tickets
Available Online
& At Participating

Walgreens

WHOLE
FOODS

SUPERMARKET

MENARDS®