

A Luverne ANNOUNCER

117 West Main St. • Luverne, MN 56156-0837 • Phone 507-283-2333 • Address Service Requested

PRSR STD
U.S. POSTAGE
PAID
Permit No. 22
Page 1 Printers
Postal Customer

VOLUME 85 NUMBER 33

ROCK COUNTY'S FREE CIRCULATION PUBLICATION SINCE 1931

August 9, 2015

Community Update

Meetings

Luverne Pink Ladies will meet at 1:30 p.m. Monday, Aug. 10, at the Blue Mound Room at Sanford Luverne Hospital.

Rock County VFW will meet at 7 p.m. Tuesday, Aug. 11, at the Herreid Military Building. Contact Buck Underwood at 449-0632.

Tourist Club will meet at 9:30 a.m. Tuesday, Aug. 11, at Sterling's Café.

VFW Auxiliary Post #2757 will meet at 11:15 a.m. Tuesday, Aug. 11, at the Minnesota Veterans Home.

American Legion Post #123 will meet at 7:30 p.m. Wednesday, Aug. 12, in the Post Home.

Beaver Creek Township monthly meeting will be at 7:30 p.m. Thursday, Aug. 13, at the township hall.

Lady Luverne Red Hats will meet at 11:15 a.m. Friday, Aug. 14, to carpool from St. Catherine's east parking lot for lunch at the Green Lantern in Hardwick. RSVP to Connie at 283-8470 or Donna at 283-8019.

Thrivent of Rock County board meeting will be at 6 p.m. Thursday, Aug. 20, at Luverne Pizza Ranch.

MS Support Group will meet at 7:30 p.m. Thursday, Aug. 20, at Southwest Health and Human Services in Luverne. All persons with MS, family and friends are invited. For info. call 283-2069 or 283-2964.

Summer fifth-grade band lessons

Summer fifth-grade band lessons will continue in the Luverne High School band room Monday, Aug. 10, to Thursday, Aug. 13. Lesson times are as follows: Flutes 1-1:30 p.m.; Clarinets 1:30-2 p.m.; Saxophones 2-2:30 p.m.; Trumpets 2:30-3 p.m.; Trombones 3-3:30 p.m.; Baritone/Tubas 3:30-4 p.m.; Percussion 4-4:30 p.m. Contact Angie Swenson at a.swenson@isd2184.net or 507-290-0147.

Women of Rock County Fine Arts show at Carnegie

Women of Rock County Fine Arts will show their new art work during the month of August at the Carnegie Cultural Center. The show includes work by Naidine Aanenson, Cindy Reverts, Kristen Peterson, Carol Ceynowa, Lois Young, Kathy Deuschle, Nan Kaufenberg, Judy Edenstrom, Mary Petersen, Lori Hallsrom and Kaia Nowatzki.

LHS Activities Eligibility Meeting set for Aug. 11

The Luverne High School Activities Eligibility Meeting will be at 7 p.m. Tuesday, Aug. 11, in the Luverne Elementary School gymnasium. The meeting is required for all students (and their parents/guardians) who plan to participate in Minnesota State High School League activities in grades nine-12 during the 2015-16 school year.

School starts Aug. 24; mark calendars

Luverne High School/Middle School begins Monday, Aug. 24. Student schedules are available online starting Monday, Aug. 3, and in the school office Monday, Aug. 10. Schedule changes should be done before school starts.

The High School/Middle School Open House is from 5 to 8 p.m. Thursday, Aug. 20. Student photos will be taken in the elementary school gym. Picture packets will be available on site.

New residents to the Luverne District should register students for 2015-16 school year. Call to make an appointment at 283-4491 for Middle School and High School grades 6-12. Parents of elementary grades K-5 can call 283-4497.

Community Ed

Register for these activities by calling Community Ed at 283-4724.

Play Dates at the Park for parents and their children ages birth to 5 years meets at 10 a.m. Wednesdays in the city park throughout the summer. Gather as a group to have fun and socialize. No fee, but registration required, please.

School Readiness Preschool program has openings for children ages 3-5 years. The program will meet once a week during the school year on Tuesday morning or Tuesday afternoon. Scholarship help is available. Call 283-4724 for more details.

Concerned about your **child's development** (ages 0-5 years)? Call 283-4724 for a private screening at no cost.

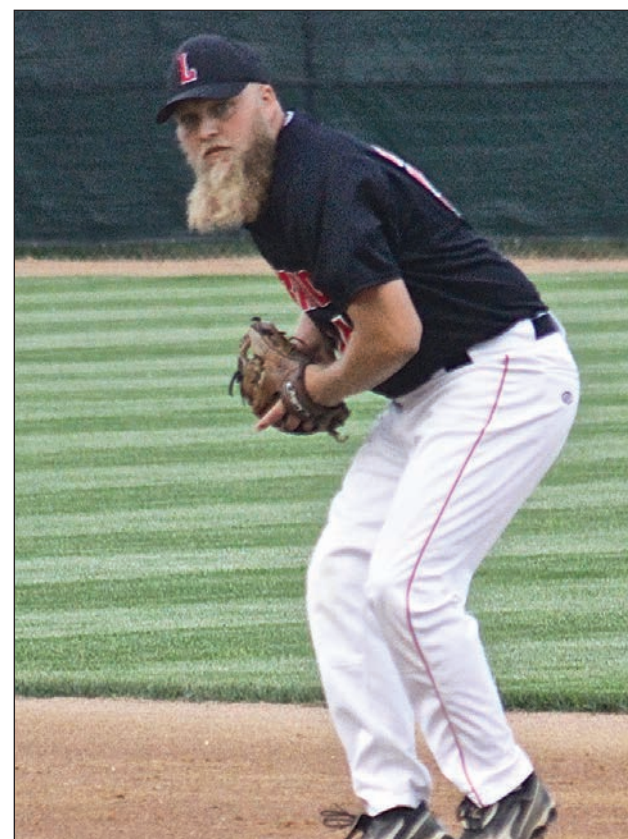
Check out the **Community Education brochure** on the Luverne School website, the community Education link.

Register for **2016 Discovery Time preschool**. There are openings for children ages 3, 4, or 5 years in the Tuesday/Thursday afternoon classes.

All 3-year-old children living in Minnesota will do an **Early Childhood Screening** as they near age 4. If your child is nearly 4 years old or already 4 and has not been screened, call 283-4724 to arrange an appointment.

Rock County STAR HERALD

Coming this week in the
Rock County Star Herald



John Rittenhouse photo/0813 redbirds 3

Irish strike first

Cole Johnson and the Luverne Redbirds found themselves facing a 1-0 deficit in a best-of-three-game-series with the Milroy Irish in the semifinal round of the Region 13C Playoffs after dropping Game 1 at Redbird Field Wednesday. Johnson registered one RBI during a 4-3 loss. Find out how the rest of the series played out in Thursday's Star Herald.



Back to School TENT SALE!

Going on now through Saturday, August 15

Look around the tent for some amazing back to school deals!

 2012 Chevy Impala Stock #102540 Papik Price \$10,900	 2005 Lexus GS300 Stock #176420 Papik Price \$11,900	 2012 Chevy Malibu Stock #193892 Papik Price \$13,900	 2008 Ford Fusion Stock #260780 Papik Price \$8,900	 2014 Dodge Avenger Stock #214932 Papik Price \$14,900	 2011 Jeep Compass Stock #248999 Papik Price \$14,900
 2008 GMC Acadia Stock #125974 SOLD Papik Price \$14,900	 2008 Ford Edge Stock #437930 Papik Price \$14,900	 2013 Chevy Impala Stock #221042 Papik Price \$14,900	 2009 Chevy Traverse Stock #1580930 Papik Price \$16,900	 2013 Chevy Impala Stock #2453428 Papik Price \$16,900	 2010 Buick Lacrosse Stock #2081480 Papik Price \$16,900
 2010 Buick Lucerne Stock #122290W Papik Price \$17,900	 2015 Ford Fusion Stock #437042 Papik Price \$18,900	 2014 Dodge Journey Stock #212742 Papik Price \$17,900	 2015 Ford Fusion Stock #189752 Papik Price \$18,900	 2015 Ford Fusion Stock #2453442 Papik Price \$18,900	 2014 Dodge Grand Caravan Stock #161002 Papik Price \$19,900
 2010 Buick Enclave Stock #101859W Papik Price \$19,900	 2009 Chevy Tahoe Stock #220559W Papik Price \$19,900	 2010 Dodge Dakota Stock #121285W Papik Price \$21,900	 2015 Mazda CX-5 Stock #445822 Papik Price \$21,900	 2012 Chevy Silverado Stock #216509W SOLD Papik Price \$19,900	 2013 Jeep Compass Stock #233820 Papik Price \$18,900
 2015 Chrysler 200 Stock #514022 Papik Price \$20,900	 2008 Chevy Silverado Stock #2544420 Papik Price \$22,900	 2015 Ford Fusion Stock #152262 Papik Price \$23,400	 2015 Chevy Equinox Stock #113112 Papik Price \$25,400	 2015 Chevy Equinox Stock #121412 Papik Price \$25,900	 2015 Buick Lacrosse Stock #1316912 Papik Price \$28,900
 2014 Ford F-150 Stock #21669W Papik Price \$29,900	 2015 Chevy Traverse Stock #1679942 Papik Price \$29,900	 2014 Ford Flex Stock #209922 Papik Price \$31,900	 2015 Chevy Traverse Stock #1154962 Papik Price \$33,900	 2014 Buick Enclave Stock #148028W Papik Price \$34,900	 2015 Chevy Equinox Stock #1029502 Papik Price \$23,900
 2015 Chevy Equinox Stock #1130422 Papik Price \$23,900	 2013 Ford F-150 Stock #67995W Papik Price \$35,900	 2013 Lincoln MKX Stock #12380W Papik Price \$29,900	 2014 Cadillac SRX Stock #6687842 Papik Price \$38,900	 2013 Ford F-150 Stock #14270W Papik Price \$41,900	 2014 Chevy Silverado Stock #106827W Papik Price \$42,900








ALL USED VEHICLES COME WITH A COMPLIMENTARY CARFAX REPORT



VEHICLE HISTORY REPORTS

507-283-9171 or 800-634-7701

PAPIK.COM



1-90 Luverne, MN
507-283-9171 or 800-634-7701

HOME FOR SALE



Ranch style home: 4BR, 2BTH on corner lot. Completely remodeled main floor with new electrical, flooring, has fireplace, new cabinets, granite countertops, etc... Main floor has 3 spacious bedrooms. 2400+ Sq. Ft., Asking \$174,900 OBO.

\$174,900

1003 N Cedar, Luverne, MN
Call 605-201-0248

Large Morning PUBLIC AUCTION

Antiques, Collectibles, Furniture, Household, Outdoor & Misc.

Saturday August 15, 2015 10:30 am
American Legion Building Hills, MN

FURNITURE & HOUSEHOLD: Sears Chest Freezer; Coronado Chest Freezer; Hotpoint Refrigerator; Large dining room table w/ 6 chairs; Kitchen table w/ 6 chairs; Sofa & Loveseat; Oversize recliner; Glider rocker; Occasional chairs; Sofa table; end tables.; Coffee tables; 4-pc queen bedroom set, 4-pc fullsize bedroom set; 2-pc bedroom set; Queen bed; Night stand; Dressers; Chest of drawers; Wardrobe; Armoire; Changing screen; Roll top desk; (3) lighted curio cabinets; Small china hutch; Cedar chest; 10 hole gun cabinet; Lamps; Wall décor; Pictures; Entertainment center; Quilt rack; Shelves; Book shelf; Bar stools; Pots & pans; Small kitchen appliances; Table ware, Cooking utensils; Bake ware; Bedding & Linens; towels; games; Seasonal décor; Lifestyle exercise bike; Sears treadmill; Storage shelf; Delta stereo; Eden Pure Space heater; Fans; Singer sewing machine; Much general household items;

ANTIQUES & COLLECTIBLES: 2 gal redwing crock; China; Crystal glassware; Painted dishes; Glassware; German CookKoo Clock; Singer treadle sewing machine; Games;

LAWN, GARDEN & OUTDOOR EQUIP: Poulan Pro 11 hp, 30" snow blower, Elect start; Ariens Sno-Tech 24" snow blower (near new); Yardman snow thrower; Lawn-Boy self-propelled push mower; Yardman 6.5 hp 21" self-propelled push mower; Craftsman chain saw; Weedeater leaf blower; Elect header; Gas cans; Yard games; Lawn chairs; Kenmore gas grill; Wagner Paint Crew paint sprayer (new and in box); Craftsman halogen work lamp; Lawn sprinkler; Fert spreader; Wheel barrow; Patio table; Potting table; Fishing poles; Fishing tackle; Garden hand tools; Snow rake; Ext cords; Extension ladder; Werner step ladder; Hand tools; Small air compressor;

MUCH MISC. TOO NUMEROUS TO MENTION

Calvin & Alice Hoff, Jerry Thorin, Owner

AUCTIONEERS NOTE: This auction offer some very good furniture and household items

TERMS: Cash or good check, Visa, Mastercard. NO GUARENTEES. Nothing is to be removed until settled for.

Elbers Auction Service

"Quality Auctions Since 1988"

P.O. Box 196 Hills, Minnesota 56138

Keith Elbers 507-962-3433 or 920-6131 www.elbersauction.com Clark Ahders 712-470-4700

Real Estate Retrievers

Matt Larson, Broker

LUVERNE, MN • 507-283-4216
HILLS, MN • 507-962-3433

REALESTATEREtrievers.com • REALTOR.COM • HOMEVIEWSIUXFALLS.COM

ALL STATE TEAM

SERVING THE TRI-STATE AREA

Keith Elbers, Realtor/Auctioneer
507-920-6131

Deb Anenson, Realtor/Office Manager/Broker Assistant
507-920-9921

Gene Anenson, Realtor
507-920-9920

Jen Rolfs, Realtor
507-227-2985

FAIR

WINNERS

SAGE KNORR

Little Tikes Grill

SHIRLEY SANDAGER

Backyard BBQ

VISIT OUR NEW WEBSITE
WWW.ALLSTATETEAM.COM

1021 W FAIRVIEW

One level living in this exquisite well maintained home. The home is located in a quiet residential neighborhood, with a rural setting viewed from your deck or guest house. The home features 3 bedrooms or use one bedroom for a large home office, as the current owners are. Recent upgrades include a new driveway in 2015, new exterior painting on trim, and new flooring in the utility room. The furnace was updated in 2014 and the A/C in 2010. When entering the home you are immediately impressed with the open floor plan, the expansive natural lighting and the view to your impressive back yard. The bedrooms are spacious and the bathroom is adjacent to the master bedroom for accessibility. The dining area/ or family room depending on your need has a wood burning fireplace. The u-shaped kitchen offers great flow and with a space for a small table for 2. In 2007 the owner's built the "Shed" and it turned into a beautiful guest house with a 1/2 bath.

200 W BARCK

The seller states that this home is looking for a large family to love. This home features 2100 sq. ft of living space on just the main level. You'll appreciate the open concept of the family room, kitchen and dining area this provides a great opportunity for entertaining friends and family. The formal living room has a gas fireplace for relaxing and the bedrooms are all spacious with large closets; one bedroom features a cedar lined closet. The home has received extensive upgrades from a complete relocation of the kitchen; The kitchen has all new custom made oak cabinetry, all new plumbing, new wiring and electrical. The main floor bathrooms have been updated with all new fixtures, wiring, plumbing and floor covering. There are many additional upgrades to numerous to mention you must see them to appreciate. The upper level is a great retreat for either a master bedroom area with a full bath and a sitting area or a great opportunity for a teenage bedroom. You'll soon come to appreciate all the storage options this home presents you with as well. The basement offers unlimited potential with a charcoal grill with copper hood the entertainment area also has a partial kitchen as well as abundant storage options. This area is as limited as your imagination. The home is move in ready and just waiting for your family to call it home.

500 JOSEPHINE, HILLS

SOLD BEFORE PRINT!

705 S ELIZABETH, HILLS

Amazing find in one of Hills newer housing developments. This home is a ranch walk-out featuring 5 bedrooms and 3 baths. There is new floor covering in the kitchen and living room and a fresh coat of interior paint has been applied throughout the home. New stainless steel appliances were just added to the kitchen. The home features GEO Thermal heating and cooling with a back-up furnace. The lower level is finished with a large family room and 2 bedrooms and a 3/4 bath. The Master bedroom is spacious with a large Walk-in closet and bath. The patio is finished with a Tiki Bar to enjoy with family and friends. Call your favorite agent today to preview this property.

We have buyers waiting for 2 or 3 bedroom houses \$100k or less. Thinking of selling? Give us a call.

Lordy Lordy look who's 40+40!

LOWELL WESSELS

August 16

Greetings can be sent to:
366th 140th Ave
Steen, MN 56173

Herman Motor Moving PUBLIC AUCTION

Thursday August 13, 2015 5:30 pm
312 E. Main Luverne, MN

As the Herman Motor Ford Dealership has built and moved into our new facility we will offer the following surplus Equipment, Office equipment, literature, brochures, shop manuals & much misc.

EQUIPMENT: Clean Burn CB-2800 waste oil furnace; Clean Burn CB-2500 waste oil furnace; Rotunda fuel injector tester; Rotundas Sleuth 2 performance analyzer; Rotunda evaporation emission tester; Snap-On digital oscilloscope; Snap-On timing light; Accu-Turn Brake lath; Can pop machine; PAR model 50 large air compressor; 750 gal stainless steel bulk tank (used for waste oil); Large work bench w/ vise; Service counter; Tool chest; Storage cabinets; Office desk; Office chairs; Frigidaire ref/freezer; Large Diehard Safe; Misc.

LITERATURE & BROCHURES: Shop manuals; Parts books; Literature; Brochures (many from 1970 & 80's) Ford vehicle posters; Ford papers; Many boxes of Ford information

PARTS: Many boxes or misc. Ford parts of all kinds for cars and trucks.

OVERHEAD DOORS: Several 12' X 12', 10' X 10', 9' X 7' overhead doors w/ openers (to be picked up at a later date call for information on doors)

Much Misc. Too Numerous To Mention

HERMAN MOTORS, Owners

TERMS: Cash or good check, Nothing is to be removed until settled for, NO GAURANTEES

Elbers Auction Service

"Quality Auctions Since 1988"

P.O. Box 196 Hills, Minnesota 56138

Keith Elbers 507-962-3433 or 920-6131 www.elbersauction.com Clark Ahders 712-470-4700

Jensen Management Service, Inc.

111 N. Cedar, PO Box 836, Luverne • 507-283-2391
William (Bill) V. Weber, broker • 507-220-4803
William (Bill) J. Korth • 507-227-4958
Tamra (Tammy) Jo Makram • 507-227-7010

CHECK OUR WEBSITE AT:

WWW.JMSI.NET

TO SEE OUR LISTINGS

401 N. Blue Mound Ave.

3 bedroom 2 story home. Attached single garage and permanent siding make this an easy home to live in. Stained glass features add character. Good access and great opportunity to build equity.

FARMLAND FOR SALE

OLNEY TOWNSHIP, NOBLES COUNTY, MN

Sealed Bid Offer Process

Property Location: A Tract of land in Section 19-102-42

Real Estate: 111.18 acres more or less in parts of the : S 1/2 NW 1/4, S 1/2 NE 1/4, SW 1/4 and W 1/3 of SE 1/4 all in Section 19-102-42 Olney Township, Nobles County, MN. According to the Nobles County Courthouse this tract of farmland is 111.18 acres more or less. FSA information shows approximately 103.10 acres tillable land, 6.4 acres of CRP with the balance in road right away. Corn base of 68.05 acres with a 155 bushel PLC yield per FSA 2015. Soybean base of 35.04 acres with a 45 bushel PLC yield per FSA 2015. Productivity Rating per Surety Mapping System is 93.7.

Terms: Cox Realty & Land Services, LLC will be accepting sealed bid offers for the said property until 5:00PM on Wednesday, September 9th, 2015, along with a 20% earnest money check down. Offers may be mailed in or dropped off at Cox Realty & Land Services, LLC, 102 E Pearl St. Ste. 103, Adrian, MN 56110. All offerors who have submitted an offer, will then be invited to the Adrian American Legion Post 32 building on Maine Street in Adrian, MN at 10:00am on Friday, September 11th, 2015. Each party will then have the opportunity to continue to bid on the said property until one remains. Closing will occur on October 13th, 2015

Taxes: Due and payable in 2015 will be paid by seller. Taxes due and payable in 2016 and beyond will be paid by buyer. Taxes payable in 2015 are \$4,786 Non-Homestead.

Note: We are honored to have the opportunity to sell the Suedkamp Family Trust Property. This farmland has been in the family for several years. This is an excellent opportunity to buy a very nice piece of farmland that has been a good producing piece of land for several years. The farm has been very well maintained by the current tenant. The land is leased out for the 2015 crop year. Possession will be after the 2015 crop removal. Information Booklets are available upon request from Cox Realty & Land Services, LLC 507-483-2218. Cox Realty & Land Services represents the Seller.

Suedkamp Family Trust Property

Sale arranged and conducted by
Cox Realty and Land Services, LLC
102 E Pearl Street Suite 103, Adrian, MN 56110
Alan Cox, Broker 507-360-7500
Cindy Cox, Realtor 507-483-2218
Fax 507-483-2293; email: coxrealty@live.com
www.coxrealtyandlandservices.com

Hedeem, Hughes & Wetering - Closing Attorney

COX Realty & Land SERVICES, LLC

Real Estate • Ag Appraisals • Management • Consultations

507-483-2218

www.coxrealtyandlandservices.com

Hickory Dickory Dock

There is **3** new babies on the block!

What: A baby shower for the Boyenga Triplets
When: Sunday, August 16, 2015
Where: St. Mary's Church, Ellsworth, MN
Time: Open House from 10 a.m. to 1 p.m.

In place of a card please use your favorite children's book to share your well wishes to Tony and Megan.

There will also be a Diaper Keg Party at the home of Amy and Dennis Boyenga on August 22!

Birthday Open House

to celebrate

MANFRED MONGER

90th birthday

BEV HUNSTAD

80th birthday

RYAN AND PATTY HUNSTAD

50th birthday

Saturday, Aug. 15
2 p.m.
Kevin Hunstad's Farm
2315 80th Ave, Jasper
(four miles east of Jasper & two miles south on 80th Ave)
Polka music by Howard & Sonia Hanson
Route 66 at 7 p.m.

Everyone is invited for a fun-filled day. No gifts please. BYOB

STILL LOOKING FOR THE RIGHT SCHOOL?

Check out Ellsworth Public Schools

A High Quality, Small School Education in Southwest Minnesota Grades Pre K-12

Ellsworth Public School gives your child a high quality education in a small school setting. Your child will be immediately comfortable with the family oriented, intimate learning environment dedicated to academic, social and relationship building success for each child. Your child will have a seamless transition to a school with high academic standards and the small school feel where every child thrives. Choosing the best school for your child is one of the most important decisions you will ever make, and we offer a strong educational excellence in a safe small school setting. If you're thinking of changing schools or want to discuss the advantages of enrolling in Ellsworth Public School we would be happy to talk to you.

Call 507-967-2242

ADVANTAGES INCLUDE:

- Small Classes
- Active Parent Support
- Extra-Curricular Activities
- Transportation at NO COST

Students picked up at your door step

Ellsworth Public School

513 Broadway Street, Ellsworth, MN 56129 • 507-967-2242

Duane J. Mulder Realty

DUANE MULDER AUCTION SERVICE
Office 507-283-4901

AUCTION SCHEDULE

Currently Taking Consignments For Our Next Indoor Auction At The Duane Mulder Auction Center, Downtown Beaver Creek, MN.
Call 507-283-4901 Or 507-220-3558 To Get Your Items Consigned To This Auction.

Saturday morning, August 15 – 10:00 A.M. – Murray County 4-H Ribbon Auction.

Friday evening, August 21 – 4:00 P.M. – Large double ring auction near Currie, MN. Antique tractors & farm equipment. Large assortment of shop tools & misc. items. John Vogel, owner.

Saturday morning, August 29 – 10:00 A.M. – Large 2-ring open consignment Auction. Farm equipment, livestock equipment & misc. item auction near Worthington, MN.

Large 2-day Open Consignment Auction near Luverne, MN: **September 12 & 14** – 10:00 A.M. both days. Livestock equipment, lawn & garden items, misc. items sell first day. Farm equipment & vehicles sell the second day.

DUANE MULDER – Auctioneer – Real Estate Broker – Certified Agricultural Appraiser. Office Phone 507-283-4901 - Cell Phone 507-220-3558.

8055 E DODGE, LUVERNE | \$287,500

MOTIVATED SELLER

VERY NICE HOME

Newly constructed property with maintenance free living. HOA is \$65.00 per month. The exterior of this home has great landscaping, maintenance free living, 2 nice decks and a covered entrance. The interior offers an open concept, beautiful kitchen offers knotty alder cabinetry with an eat in area, bright and open living room, master bedroom with walk in closet and master bath, main floor laundry, additional bathroom and a second bedroom. The lower level offers lots of great entertaining space in the family room, plus two additional bedrooms, bathroom, storage area and mechanical area. Lawn care and snow removal are covered with the HOA.

1420 COUNTY RD 4, LUVERNE | \$211,900

Couldn't get much nicer...living in the country but on the outskirts of Luverne, you'll find this well built & cared for acreage. Spacious 4 bedroom ranch with over 3000 sq feet of living space sitting on 3.2 acres. Scenic views can be found from the four season porch overlooking the country side. Home features large spacious living room, Country Cupboard kitchen and adjacent dining area, 2 bedrooms with a 3/4 bath and master bedroom with closet and 3/4 bath. Lower level find the family room and full 2nd kitchen making entertaining a breeze! 4th bedroom, 3rd 3/4 bath, nice size laundry room along with storage room lend for a lot of family living. 2 metal buildings allow for the big boy toys storage and more. You'll have to check out the efficiency to heat & cool this home making it very affordable to live in comfortably. This property does not require flood insurance. Very nice setting! Agent Owned

ACREAGE CLOSE TO TOWN

LOCALLY OWNED AND OPERATED AGENCY

WWW.CRAGOE.COM

Selling Real Estate in the Heart of the PrairieLand.

Your hometown real estate broker for over 22 years
Scott Adams, broker 507-227-0840
Gene Cragoe, broker lic. in MN & SD info@cragoe.com 507-283-2647 or 1-800-689-2647

RETIREMENT FARM EQUIPMENT AUCTION

JD 9870 STS Bullet Rotor Combine, JD #1293 12 Row 30" Corn Head, JD #843 Corn Head, JD #635 HydraFlex 35" Bean Head, JD 9330 4 Wheel Drive Tractor, JD 9320 4 Wheel Drive Tractor, JD 8320 MFWD Tractor, JD 4450 Tractor, 3- JD 4020 Tractors, JD 3020 Tractor, JD #700 Long Track Dozer w/6 Way Blade, 2 Peterbilt Semis, 2- Dakota Polished Aluminum 42' Grain Trailers, 2- JD 1770NT Planters – 24 Row & 16 Row, 2 - JD #2633 36 1/2' Discs, Other Late Model Farm Equipment, 2008 Dodge Ram 2500 HD 4x4 Crew Cab Pickup w/Cummins Dsl. Engine & Collectors Vehicles Including a 2010 Camaro SS w/Big Block 500 HP Engine, 1969 Camaro RS w/New 450 HP 383 Stroker Engine, 1969 Firebird w/ New 500 HP 383 Stroker Engine and a 1987 Harley Davidson Custom Soft Tail Motorcycle & More!

As I have leased my cropland and have retired from row crop farming, I will offer the following personal property at auction at the farm located at 48258 268th St, Brandon, SD; from the Brandon-Corson, SD Exit #406 on I-90 - approx. 5 1/2 miles south to the Jct. of Hwys. #11 & #42, then 1 1/2 miles south on 481st Ave. and 1 1/2 miles east on 268th St.; from Sioux Falls, SD (Jct. Hwys. #11 & #42) - 3 miles east on Hwy. #42, then 1 1/2 miles south on 481st Ave. and 1 1/2 miles east on 268th St.; from Rowena, SD – 1/4 mile east on Hwy. #42, 1 1/4 miles south on 483rd Ave. and 1/2 mile west on 268th St.; or from Larchwood, Iowa - approx. 5 miles west/northwest on Hwy. #9 to the Grand Falls Casino situated at the SD/IA State Line, then turn left (west) on 268th St. & go approx. 2 3/4 miles west on IA – 100th St./SD 268th St.

FRIDAY AUGUST 21, 2015 SALE TIME: 11:00 AM

To view photos, see www.suttonauction.com
Lunch by the Dell Rapids Foresters

AUCTIONEERS NOTE: This is an extremely high caliber line of late model farm equipment that must be seen to be appreciated! Earl is the 1st or 2nd owner of many of the major articles. Additionally, the combine and all of the tractors have been recently inspected and serviced by Schuneman JD in Garretson, SD and are field ready, and all of the trucks have been professionally serviced and are ready for fall harvest. Make plans to attend this auction featuring a premier line of late model farm equipment and some terrific muscle cars! **NOTE – Pickups, Collectors Vehicles & Motorcycle to begin selling at approx. 2:00 PM.**

COMBINE, HEADS & HEAD TRAILERS: JD 9870 STS Bullet Rotor Combine w/Cab, Greenstar Ready, Auto Steer w/2630 Monitor, Mauer Tank Extension, Chopper, 520/85R42 Dual Drive Tires & Rear Wheel Assist w/28L26" Rear Tires, 917 Engine Hrs. & 598 Separator Hrs., SN 1H09870SHB0740621 (2011); JD #1293 12 Row 30" Corn Head w/Poly, Hyd Deck Plates & Row Sense; JD #843 Corn Head – 8 Row 30" w/Poly – All Rebuilt; JD #635 HydraFlex 35" Bean Head w/Fore & Aft (2011) – One Owner; Nearly New J&M Corn Head Trailer; M&W Corn Head Trailer; 2011 Unverferth Road Runner RR38 Bean Head Trailer w/DbL. Dolley Wheel Hitch – like new.

TRACTORS & ACCESSORIES: JD 9330 4 Wheel Drive Tractor w/Cab, Greenstar 3 & JD 2630 Auto Steer w/Lg. Screen, 18 Speed Powershift, JD Active Seat & Buddy Seat, 710/70/R38XM28 Dual Tires, 6 Rear Wts. (1 Inside & 2 Outside) – approx. 2,700 lbs. total & Sturd-E-Built Rock Box, 4,205 Hrs., SN 9330P004770 (2008); JD 9320 4 Wheel Drive Tractor w/Cab, Only 150 Hrs, on Out of Frame Engine Overhaul, 18 Spd. Powershift, Raven Enviso Auto Steer & Monitor, Quad Hyd., 3 Pt., Rockbox, 710/70R38XM28 Dual Tires w/1,000 lbs. of Rear & Front Wheel Wts.; JD 8320 MFWD Tractor w/Cab, Greenstar 3 Auto Steer & JD Screen, Buddy Seat, 16 Speed PS, Quad Hyd., 1,000/540 PTO, Quick-tach Hitch, 480/80R46 Rear Tires & Inside Wts., Dual 380/85/R34 Front Tires & Rock Box, 3,532 Hrs., SN 8320P24794 (2004); JD 4450 Tractor w/SG Cab & Miller P-12 Loader, Quad Range, Triple Hyd., New 20.8x38" Deep Tread Firestone Rears & new 16.5x16.1" Ft. Tires, 9065 Total Hrs. & had Underhaul at 8000 Hrs.; JD 4020 Dsl. Tractor w/Wide Front, Overhauled, Roll Bar, Synchro Shift, New 34" Rubber, Dual Hyd. 3 Pt., 540 PTO (1972) – VG Cond.; JD 4020 Dsl. Tractor w/Wide Front, Powershift, Overhauled Engine w/approx. 1,000 Hrs., New 18.4x34" Rubber, Dual Hyd., 3 Pt. w/Q-tach Hitch, 540 PTO, Approx. 8,325 Total Hrs., SN 238,546 (1970) – Show Room Sharp; JD 4020 Dsl. Tractor w/Synchro Shift, ROPS, Wide Frt., Factory Dual Hyd., 3 Pt., 540 PTO & New 18.4x34" Tires, approx. 6700 Actual Hrs. (1967); JD 3020 Dsl. Tractor w/Wide Frt., Quad Range Shift, Dual Hyd., 3 Pt., Rockbox & 16.9x38" Tires (all original - nice); Miller P-12 Loader w/7' Material Bucket & 20 Series Mts.; Miller 2 Tine Bale Spear; 14 JD Suitcase Weights w/HM Quick Hitch Mt.; 8 JD Suitcase Wts.; 2 – 20.8x38" Tractor Tires w/Rims; Set of 18.4x34R Tractor Tires & Rims; Set of Hiniker Tractor Fenders & Misc.

JD #700 DOZER, 2014 LOW BOY TRAILER, BOBCAT SKID STEER & ACCESSORIES: JD #700LT Dozer w/Cab, AC, Oil Pinned Long Track, JD Dsl. Engine, 6 Way Blade, Vail 3 Shank Ripper, Approx. 1,885 Hrs., Exc. Cond. (2008); 2014 Kaufman 51 1/2' 3 Axle Drop Deck Low Boy Trailer – One Owner; Bobcat #553 Skid Steer w/ROPS, Dsl. Engine, 5' Material Bucket, Front Hyd. Outlet, Only 625 Hrs.; Skid Steer Pallet Fork; Skid Steer Manure Bucket.

2 - SEMI TRUCKS, 2 - POLISHED ALUMINUM GRAIN TRAILERS, FLATBED 5th WHEEL TRAILER & GRAIN CART & WAGONS: 2007 Peterbilt Twin Screw Semi Tractor w/Unibilt Cab Sleeper System, 550 CAT Dsl. Engine, 10 Speed Auto. Trans., 240" Wheel Base, 285/75R24.5 Tires & Alum. Rims, approx. 540,000 Miles (Lt. Blue) – Nice; 2003 Peterbilt Twin Screw Semi Tractor w/Extended Hood, Day Cab, 550 CAT Dsl. Engine, 10 Speed Auto. Trans., 240" Wheel Base, 1/2 Fenders, Alum. Wheels, 10" Chrome Straight Pipes, Approx. 433,000 Miles – Dark Blue; 2- Dakota Trl. Mfg. 42' Polished Aluminum Grain Trailers w/Ag Hoppers, Roll Tarps, 11R22.5 Tires & Aluminum Rims, Mfd. 8/24/09 & 8/25/09 (One Owner) – Exc. Cond.; 2011 Big Tex 32' 5th Wheel Low Profile Flatbed Trailer w/2 - 10,000 lb. Axles, Beavertail & Triple Folding Ramps; 2011 Demco 1050 Grain Cart w/20" Unl. Auger w/Elec. Pivot on the Spout, Scale & Shur-Lok Roll Tarp; Brent #544 Gravity Wagon w/HD 445/65R22.5 Tires w/Brakes & Lights (Like New); Parker 225 Bu. Gravity Wagon w/Gear.

PLANTING & TILLAGE EQUIPMENT, SHOP ITEMS & MISC.: JD 1770NT 24 Row 30" Planter w/CCS Seed Delivery System, Row Shut-off, Shark Tooth Ridge Openers, Markers, Corn & Soybean Disks, #2630 Monitor – Only Planted Approx. 7,000 Acres – SN 1A01770ETAM740314 (2010) - VG Cond.; JD 1770NT Vacuum 16 Row 30" Planter, CCS Seed Del. System, Row Command, Hyd. Vari Rate Drive, Row Cleaners, Seed Star XP & Tru Vee Openers (2011); 2 - JD 2633 36 1/2" Rockflex Discs w/26" Blades (1 w/ Rolling Baskets & 1 w/3 Bar Harrow) - 2013; JD 726 38" Soil Finisher – Variable Depth w/5 Bar Harrow & Low Acres on Rebuilt Shanks & Disc Blades; JD #915 9 Shank V Ripper – 3 Pt.; Convey-All BTS 290 Seed Tender w/Honda 5.5 HP Gas Engine on Gooseneck Trailer; Wdn. Flatbed w/Gear; Case-IH #1300 Sickle Mower w/8 1/2" Bar; 1,000 Gal. Dsl. Tank w/Elec. Pump; 500 Gal. Fuel Tank w/Elec. Pump; 200 Gal. "L" Shaped Fuel Tank w/12V. Elec. Pump; 2 – 100 Gal. Fuel Tanks w/12V Elec. Pumps; 2 – 50 Gal. Fuel Tanks w/12V Elec. Pumps; Kawasaki Mule Side by Side ATV (rough); Cub Cadet LT 1050 Lawn Tractor w/23 HP Kohler Gas Engine, Hydrostatic Drive, 50" Deck, Only 191 Hrs.; 6 New 12.5x15" Tires; 4 – New 340/65R18" Tires on 8 Bolt Rims; 4 – New 11x22.5" Tires; 4 – Aluminum 11x25" Tires On Aluminum Rims; 4 Stihl Chainsaws, Various Shop Items & Other Misc.

LIVESTOCK FEEDING EQUIPMENT, ALUMINUM LIVESTOCK TRAILER, CATTLE TUB & WORKING CHUTE, CONTINUOUS PANEL FEEDBUNKS & PORTABLE HAY FEEDERS: Knight Reel Auggie 3250 Feed Wagon w/Scale & Left Hand Discharge; Butler #180 Mixer Feed Wagon w/Scale & Left Hand Unload; Roda R810 Manure Spreader w/3 Horizontal Beaters & Slop Gate; 2014 Wilson Ranch Hand 7'x24' Aluminum 5th Wheel Livestock Trailer w/2 Divide Gates – Black – VG Cond.; Kiefer 2 Horse Bumper Pull Livestock Trailer; 23 – 24' Steel Continuous Panel Feedbunks (really nice!); 2 – 24' Teslaa Portable Hay Feeders w/Dolley Wheel Pull-type Hitches & Misc.

PICKUPS & 4 WHEEL ATV: 2008 Dodge Ram 2500 HD 4x4 Crew Cab Pickup w/Cummins Dsl. Engine, Auto. Trans., Gray Leather Interior & Black Metallic Exterior Approx. 64,500 Miles – (loaded); 1986 Toyota EFI 4x4 Shortbox Pickup w/4 Cyl. Engine, 5 Spd. Trans., PS, AC, 6" Lift Kit, Rims & Tires, Big Straight Pipe, Approx. 100,000 Miles - Blue; 1984 Toyota Short Box 4x4 Pickup w/5 Spd. Trans., 6" Lift Kit, Rims & Tires, Big Straight Pipe, Only Approx. 6,000 Miles on a New/Rebuilt 4 Cyl. Short Block Engine - Blue; 2009 Polaris 500 H.O. Sportsman 4 Wheel ATV w/All Wheel Drive & Auto. Trans. (Nice); Honda Recon 250 ES 2WD ATV w/Elec. Shift.

COLLECTORS VEHICLES, HARLEY CUSTOM SOFT TAIL MOTORCYCLE & GUN SAFE: 2010 Camaro SS w/Big Block 500 HP Engine & 6 Speed Auto. Trans., Black Leather Interior and Black w/Gray Striped Exterior; 1969 Camaro RS w/New 450 HP 383 Stroker Engine & Off Frame Restoration, 4 Spd. Trans., White w/Red Striped Exterior (Exc. Cond.); 1969 Firebird w/New 500 HP 383 Stroker Engine & Off Frame Restoration, 4 Spd. Auto. Trans., Chrome Steering Column, Factory PS, Power Brakes, A/C, Black Exterior w/Dark Green Top (Exc. Cond.); 1987 Harley Davidson Custom Soft Tail Motorcycle, Approx. 18,000 Miles, One Owner – Exc. Cond.; Cabelas 12 Place Gun Safe w/DeKalb Emblem (gray) – New.

Earl Grimmus, Owner
Ph. 605-370-8777

CHUCK SUTTON – Auctioneer & Land Broker, LLC
Sioux Falls, SD - ph. 605-336-6315

CLARK AHDERS – Auctioneer – Rock Rapids, IA – ph. 712-470-4700
& JARED SUTTON – Personal Property Auctioneer – Cell ph. 605-864-8527
Clerk: Chuck Sutton Auction Service, LLC

Bring in your current policy for a comparison today!



South Hwy. 75, Luverne, MN
507-283-8383 or 1-800-258-4471
E-mail: info@Cattnach.com
Website: www.cattnach.com

MASSAGE THERAPY at Sanford Luverne.



Kaye Donnelly, Massage Therapist

Whether you've been injured, have chronic pain or just have had a long day, find relief and relax with a massage at Sanford Luverne. A massage from our new massage therapist Kaye Donnelly can:

- Decrease anxiety
- Enhance sleep quality
- Boost energy
- Improve concentration
- Increase circulation
- Reduce fatigue

Call (507) 449-1229 to schedule your massage at Sanford Luverne today.

Choose from a variety of massages including:

- Hot stone
- Deep tissue
- Relaxation

sanfordluverne.org

SANFORD
Luverne

018019-00117 6/15

THANK YOU...

to the following community members and businesses for supporting Rock County Youth in the 18th Annual Rock County Golf Scrambler for Kids held on Monday, August 3:

EVENT SPONSOR
Glen's Food Center

HOLE SPONSORS

Agri-Energy, LLP	First Farmers and Merchants Bank	Minnwest Bank
Berkley Insurance Company	Hills Stainless Steel	Monsanto
Bill's Water Conditioning	Hartquist Funeral Home	Professional Ag Marketing
Buffalo Ridge Insurance	Howling Dog Saloon	Quality Printing
Busse Plumbing & Heating	Keith & Audrey Aanenson	Randy's Pumping Service
Casey's General Stores	Klosterbuer & Haubrich, LLP	Rock County Chiropractic
Cattnach Insurance	Korth Auction Services	Rock County Star Herald
Cleveringa Construction	Luverne Body Shop	Roos & Son, INC.
Country Cupboards	Luverne Building Center	Sanford Health
David Paquette, D.D.S.	Luverne Farm Store	Sterlings
Eastern Farmers Cooperative	Luverne Kawasaki	Take 16
Estenson Company	Luverne Pizza Ranch	Tom & Vonnie Nergaard
Exchange State Bank	Luverne Rotary	Tree Tech
Facco, USA	Main Street Financial Services	United Methodist Church

OTHER SUPPORTERS

Lewis Drug	Howling Dog	Luverne Area Aquatics & Fitness
Bomgaars	Sterlings Cafe	
The Bluestem	Rock County VFW	

SPECIAL THANKS TO:

Master of Ceremonies - Gary & Barb Golla
Grillers - Bob Jarchow & Dale Reverts
Chicken breasts - Gold'n Plump
Cake - Susan Schneekloth
Salads - Jean Bowron & Tuesday Morning Coffee Club
Awards - Terry's Trophies
Luverne Country Club, Mike Gonnerman & staff
The Teams & golfers

Don't miss a single sale!
Read the Announcer online
www.star-herald.com





CONKLIN AgroVantage
The Total Systems Approach For Your Crop Management Program

Field Day
August 26 - 10:30 a.m. - 3 p.m.
(tours starting at 10:30)
Porkchop Dinner 11:30 a.m.-1 p.m.
(by Tony's Catering)

Marten Kruger 507-920-9386
From Interstate ~ Exit 12 North on Co. Rd 4 ~ 3 miles west ~ 2 miles south on Co. Rd. 11 ~ 100th Ave 81st St.

**Would you like to be the featured Rock County Cook of the Week?
Call Chantel at 283-2333 today!**




Orv & Sons, Inc.
Plumbing ~ Heating ~ Cooling
507-967-2464
Office hours: M-F 7:30-noon & 1-5 ~ Sat 7:30-9 a.m.

Licensed for pump installation, sewer installation & Backhoe services
Roto-rooter, Pipe Location & Camera Inspection System
Oxyblast-Hydrogen Peroxide water treatment Product
Lennox Furnaces & Air Conditioners

Hydron Module
308 S. Broadway St. Ellsworth, MN

Free Second Opinion
No Obligation

Auto Home Farm Nursing Home Commercial Life Health Crop Hail



Shirley Top
212 S. Kniss
Luverne, MN 56156
507-283-3704
shirley@kozłowski-insurance.com

Kozłowski
Insurance Agency & Financial Services, Inc.
Agent since 1987



Luverne Rotary 2015 Rose Sale
Luverne Rotary members will be taking orders now through Monday, September 14

Note: Roses do not come with a vase, but include baby's breath

\$20 per dozen

Contact any Rotary member or call Curt Bloemendaal at 507-227-2090 and leave a message.


Delivery: 9am - 12 pm | Wednesday, October 7
FREE delivery within Luverne city limits

This rose sale is the Luverne Rotary Club's largest yearly fundraiser. The proceeds have been used for the Back Pack Program, S.H.A.R.E., Honor Flight, Summer Recreation and many more community programs.



2015'S MULES ARE HERE

2015 ATVS ARE HERE



Luverne Kawasaki
Let the Good Times Roll™
101 W. Maple, Luverne, MN 56156
507-283-1800

Don't miss a single sale! Read the Announcer online www.star-herald.com Updated every Saturday

Fair Winners

Congratulations to our fair winners!
Caiden Holtz
Mike Jarchow
Claudia Soto
Blakley Fick
Ashlyn Johnson
Barb Sandbulte

Congratulations to our Facebook winner!
Bill Tiesler

Like Luverne Ace Hardware on Facebook for more great promotions!
We are so much more than just a Hardware Store.
We offer something for EVERYONE! We also offer Wedding registries.
Paint samples .99¢ the entire month of August to prepare you for our Labor Day paint sale!
Clearance Sales throughout the store.



ACE
The helpful place.
210 East Lincoln, Luverne, MN
507-283-4161

SALE 99¢ PL



ACE
The helpful place.

HOURS Mon. - Fri. 8 a.m. to 7 p.m. | Sat. 8 a.m. to 6 p.m. | Sun. 11 a.m. to 4 p.m.

Back To School SALE!

Buy a frame and get clear single vision lenses **FREE.**

Glasses for everyone

Receive a \$129 credit to the cost of your no-line bi-focals or polarized sunglasses!

\$129 savings!

Offer cannot be combined with other offers. Now until August 31, 2015

Rock County EYE CLINIC
507-283-2345
102 N. Freeman Ave. Luverne, Minnesota

Rock County Eye Clinic, locally owned, community involved, clearly different.

Get your local news online www.Star-Herald.com

WE'RE CELEBRATING OUR 83RD ANNIVERSARY!



STOP IN AND SEE US AT OUR NEW LOCATION!

Until the end of August

 2015 Ford Focus SE \$19,341	 2014 Ford Fusion SE \$23,324	 2015 Ford Edge SEL \$37,350	 2015 Ford Explorer XLT \$37,519	 2015 Ford Super Duty F-250 XLT \$46,988	 2015 Ford F-150 Lariat \$48,172
 2012 GMC Acadia, Denali \$35,995	 2013 Ford Explorer XLT \$33,983	 2012 Ford F-150 Lariat \$30,983	 2011 Ford F-150 Lariat \$29,983	 2014 Ford Flex \$31,995	 2013 GMC Terrain, Denali \$28,995
 2012 Lincoln MKX, AWD \$27,983	 2013 Ford Escape SEL \$24,983	 2014 Ford Fusion, Titanium \$23,495	 2012 Ford Taurus Limited \$18,983	 2010 Ford Edge Limited \$16,983	 2013 Ford Focus SE \$13,983

Herman
LUVERNE, MN
Since 1932

624 South Kniss Avenue
Luverne, MN
855-383-4427 • 507-283-4427

View our inventory
www.hermanmotor.com

New Prairie Insulation, Inc.
 Serving Residences & Contractors
FREE ESTIMATES
---Insulation---
 Arnold Brondsema
 Beaver Creek, MN
 507-673-2548 or
 1-800-232-7089

Loans, leases, and crop insurance



Pat Barnett
 866-601-0506

AgStar
 Financial Services, ACA
 AgStar.com

AgStar Financial Services is an equal opportunity employer and provider.

RECYCLE!

Going to extreme measures to stay cool? We've got you covered.

Stay comfortable with a new A/C and save on your energy costs with help from a Minnesota Housing Fix Up loan.

The Fix Up loan program provides affordable, fixed interest rate loans for energy improvements. Secured and unsecured options are available with no income limits and monthly payments that work for your budget.

Save even more with a rebate on qualifying equipment from your local utility. Call Luverne Municipal Utility at 449-2388, or visit www.brightenergysolutions.com.

Contact Minnwest Bank (see Patty or Becca) or First Farmers & Merchants Bank to apply. Visit www.mnhousing.gov or call 1-800-710-8871 to find a lender.

Luverne

305 E Luverne, PO Box 659
 Luverne, MN 56156
 (507) 449-2388
www.cityofluverne.org

Minnesota Housing
 Finance Agency



Papik MOTORS

Back to School TENT SALE!

Going on now through Saturday, August 15

Look around the tent for some amazing back to school deals!

\$0 Down Delivers Any Vehicle¹

Vehicles Starting at \$4,000²

90 Days to First Payment³

Stop in for a test drive!

START YOUR KIDS BACK TO SCHOOL SHOPPING WITH US!

CERTIFIED PRE-OWNED
 CHEVROLET BUICK GMC
 No Worries.™

CERTIFIED PROTECTION WARRANTY
 certified pre-owned
 CHRYSLER | JEEP | DODGE | RAM

507-283-9171 or 800-634-7701
PAPIK.COM

Papik MOTORS
 I-90 Luverne, MN

¹With approved credit
²While supplies last
³New vehicles with approved credit

The Daily News of Rock County. Updated Daily. → www.Star-Herald.com

Find it here!

Here's My Gard

Your Quick & Easy Guide to Area Businesses

Hudson's Tile Creations, LLC
 Sales and/or Installation
 Residential & Commercial

IN BUSINESS OVER 20 YEARS • REFERENCES

Floor & Wall Tile • Natural Stone
 Custom Showers • Pattern Work
 Self-leveling Floors • Backsplashes
 Electric In-floor Heat

Randy Hudson
 1217 N. Linden Street, Luverne, MN 56156
 507-449-0370 • 507-220-1802

FRANKEN CONSTRUCTION

Travis Franken, Lic #20627458 & Insured
 1332 181st St., Luverne

507-920-8253
 Call today for a FREE ESTIMATE.

REMODELING • NEW ADDITIONS • SIDING
 DECKING • WINDOW/DOOR REPLACEMENT
 GARAGE DOORS • CONCRETE
NO JOB IS TOO SMALL!!!

Loosbrock Electrical Construction, LLC

Licensed • Bonded • Insured
 Residential • Commercial • Industrial • Agriculture

Scott Loosbrock
 Owner

507-360-5418 • scott@loosbrockelectric.com
www.loosbrockelectric.com

Call us for all your residential, commercial and farm wiring needs!

McClure Electric
 Luverne, MN 507-283-4716
 Alan M. Aanenson, owner

H&A HEIDEBRINK & ASSOCIATES

Farm • Home • Business • Auto
 Crop • Life • Health
 Long Term Care

heidebrinkinsurance.com
 Luverne, MN 56156 • 507-283-4085

M L ELECTRIC

Residential • Commercial • Farm Wiring • Trenching
 Licensed • Bonded • Insured Mike Buss, Owner

507-449-8005

CLEVERINGA CONSTRUCTION

507-920-5631
 • For All Your Building Needs • Additions • New or Remodel

www.cleveringaconstruction.com
 Merlin Cleveringa 879 - 100th Ave., Luverne, MN
 507-283-2698 Home Lic. # BC-20552185

McClure PLUMBING, HEATING, AIR CONDITIONING, INC.
 412 S. Kniss • Luverne, MN • 507-449-2828

Jerry Buss Lic. #002732PM **RAIN-BIRD** Carrier
 Troy Buss Lic. #005573PM **LENNOX BRADFORD WHITE**
 SD # Luv-MN-R1117-98-1262C
 Licensed, Bonded and Insured in Minnesota and South Dakota

ROCK COUNTY ROC CHIROPRACTIC

Services:
 • Men's & Women's Health • Acupuncture • Custom Orthotics
 • Kinesiotape • Athletic Care • Massage Therapy
 • Infant & Maternity Care • Work & Auto Injuries • Postural Restoration

WWW.ROCKCOUNTYCHIROPRACTIC.COM
 283-2561 • 103 E. MAIN, LUVERNE

Monday 7:30 a.m. - 6 p.m. • Tuesday 7:30 a.m. - 3 p.m.
 Wednesday 7:30 a.m. - 6 p.m. • Thursday 7:30 a.m. - 1 p.m.
 Friday 7:30 a.m. - 5 p.m.

LUVERNE HEALTH & WELLNESS
 Codie Zeitenhorst, DC

Chiropractic Care
 Family Care Sports Injuries
 Kinesiotape Auto & Work Injuries
 Massage Available 5 Days A Week

Kris Van Der Brink M.T. & Amy Rosales M.T.
 507.449.4400 www.luvernechiro.com
 109 S Freeman Ave., Luverne MN

Meulebroeck, Taubert & Co., PLLP
 Certified Public Accountants
 P.O. Box 685 • 109 S. Freeman • Luverne, MN 56156
 507-283-4055

Experienced tax preparers with offices in Luverne, Pipestone, Marshall, Tyler & Lake Wilson

- Tax planning and preparation
- Accounting and bookkeeping services • Payroll services
- Quickbooks set-up and assistance

Dave Friedrichsen, Daryl Kanthak, Krista Kroon, Cayla Hamm, Amy Mollberg, Phyllis Vos, Janet Slieter and Lois Mulder

Mental Health

Consulting Psychiatrist
 Individual, Family and Group Therapy
 Psychological Evaluation
 Employee Assistance Program
 Public Education

Crisis Hotline
 1-800-642-1525
 216 East Luverne St.
 Luverne • 507-283-9511

Southwestern Mental Health Center, Inc.

Culligan

Better Water. pure and simple.™

water softeners • drinking water units
SALES • SERVICE • RENTALS

Luverne, MN 507-283-9105 Pipestone, MN 807-825-2257
 Hwy 75 North • Luverne

Rock County EYE CLINIC

Dr. Sandra Curman
 507-283-2345

102 N. Freeman Ave., Luverne, Minnesota

Van Aartsen Construction Inc.

Darrel Van Aartsen, Owner
 507-920-9499

- New Home & Remodeling
- Commercial and Farm Buildings

Call for an Estimate.

Builder of Casfin Drive and many other beautiful homes in the area.

New Construction • Home Additions • Interior & Exterior
 Home Remodeling • Windows • Siding • Drywall

30 Years Experience

Oehlerts & Son Construction
 Kevin Oehlerts, Luverne,
www.OehlertsAndSonConstruction.com
 507-673-2206

Den Herder Construction, Inc.
 Jim Den Herder Cal Den Herder
 P.O. Box 522, Luverne, MN 56156-0522
Phone 507-920-8917
 License Number 1656

Dining & Entertainment



A WALK ON THE PRAIRIE

Flowers, Grasses & So Much More...

At TOUCH THE SKY PRAIRIE

August 15 - 9 am - Southwest Kiosk
Program & Reception - FREE

With Howard Paul - US Fish & Wildlife Naturalist

Sponsored by Luverne CVB
Information at 507 283-4061

Photography courtesy of Jim Brandenburg

BISON ON THE PRAIRIE

At BLUE MOUNDS STATE PARK
August 14 - 8 pm - Amphitheatre
Program with Reception to Follow

Presentation by BMSP Manager -
Chris Ingebretsen

Rock River Beer Fest

A CELEBRATION OF CRAFT BEERS

FREE Trolley Service
w/in 5 miles
1 pm to 7 pm
507 920-0332

Homebrew Contest
CASH PRIZES

\$25 ADV TIX
\$30 DAY OF

Rock River
BEERFEST

Luverne,
Minnesota

DD Tix - \$10
Available at Door

Sample Wine from
\$W MN Newest Winery!

August 15, 2015 2-6 pm

At the Blue Mound Ice Arena—Luverne, MN

SAMPLE 100 BEER PROFILES FROM 26 DIFFERENT BREWERIES

*****ENJOY LIVE MUSIC & LOCAL FOODS*****

Proceeds support youth and local community programs.—Tickets \$25/person—ADVANCE

TICKETS AND INFORMATION AVAILABLE AT www.rockriverbeerfest.com



EXPLORE **m** MINNESOTA

#ONLYINMNE

Pink Ladies Salad Luncheon

American Legion Hall - Luverne

Thursday, August 13
11 am to 1 pm

\$6 per person

\$2 children under 10

Sponsored by: Pink Ladies



You are invited to a cruise
Night at All About Travel, Inc.!

Please join us, along with our Princess Cruises® representative, for an Alaska Vacation Planning presentation.

August 25, 2015 | 6 p.m.
All About Travel, Sioux Falls, SD

Please RSVP to hold your spot!
Email - aat@allabouttravel.org or
Register at www.AllAboutTravel.org



ALL ABOUT TRAVEL INC.
7-Year Winner! Layaway & Gift Certificates Available!
605-339-8911 • 1-800-390-6610
3801 S. Western Ave., Suite 103, Sioux Falls, SD
Open: Mon.-Fri. 8 a.m.- 7 p.m. • Saturday 9 a.m.-1p.m.
www.AllAboutTravel.org www.facebook.com/AllAboutTravelInc
Helping You Find Your Personal Paradise!

ANNUAL CARNIVAL

in the Reformed Church of Steen parking lot

WED., AUG. 12 • 6-8 P.M.

All ages come for food,
fun & fellowship!

INFLATABLES: Wipe Out, Obstacle Course & Jump Tent

GAMES: Hydro Blaster, Skee Ball, Bean Bag Toss, Treat Walk, Duck Pond, Face Painting, Balloon Darts and MORE!

MEAL: Pork Sandwiches, Hot dogs, Beans, Chips, Dessert, & Drink. Free will offering.

All proceeds go to the Sunday School Department

Dining & Entertainment





Weekend Special

August 14th & 15th

Surf & Turf
(8 oz Sirloin & 6 oz Lobster Tail)
Choice of Potato, Salad & Texas Toast

24654 475th Ave
Dell Rapids, SD
605-428-4511
www.old77barandgrille.com

Old 77... Your Dell Rapids Craft Beer Head Quarters...
Now featuring a variety of 15 tap beers. Selection Changes Weekly!



TAKE 16
BREWING CO.

LIVE MUSIC 6 TO 9 P.M.
BEER & WINE SERVED AND FOOD AVAILABLE

DISPLAY YOUR VINTAGE OR CLASSIC VEHICLE, MEET FRIENDS AND ENJOY A BREW

CRUISE IN

AUGUST 13 | 5 TO 10 P.M.
2ND THURSDAY OF THE MONTH

509 E Main, Luverne 1-855-5-Take16 www.take16beer.com

South Dakota **State Tractor Plowing Contest**
August 22
9 am: Small Plow Contest
11 am: Antique Contest
1 pm: Novice & Garden Tractor Contest

Ploughing Assn.

Free Admission!
Interesting Antique Tractor and Horse Plowing Demonstrations!

Concessions on Site!
Bathrooms on Site!
Plenty of Free Shade!

at the LeRoy Fett Farm
2 miles south and 1 east of Tea (corner of 274th ST and 470th AVE)
Call John For More Info: 201-1857

DART TOURNAMENT
FRIDAY, AUGUST 14
7 P.M.

FREE WILL DONATION
Pork Chop Sandwich

Proceeds go to the Hills Rez Restoration Project

HILLS BAR
507-962-3000

PALACE THEATRE
LUVERNE, MINNESOTA

SUNDAY, AUGUST 16
2:00PM - TICKETS \$12

Under New Ownership
Stop up & see what we have to offer

Restaurant opens at 10 a.m.
Bar opens at 3 p.m.-close

green Lantern
CAFE & STEAK HOUSE
Hardwick, MN
507-669-2246

Daily Specials
Happy Hour 3-6 p.m.
\$2 Bud & Miller products

Hours:
Mon.-Sat.: 10 a.m.-close
Sundays: Bar opens at 3 p.m.

SEE YOU SOON!

A night at the Green Lantern **Priceless**

Celebration of 50 years in our current church building

First Presbyterian Church | Beaver Creek

Saturday, August 22
Kids Day 2-6

Face Painting • Pony rides • Games • Inflatables
Hot dogs, chips, drink (FREE)

Sunday, August 23 10:30
Outside worship service under the tent
Catered meal to follow

EVERYONE WELCOME!

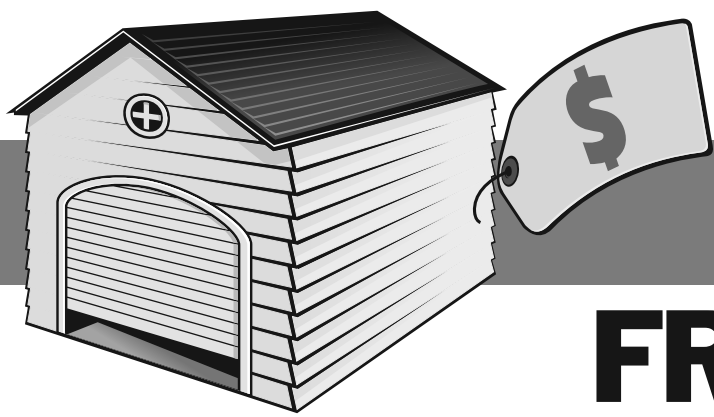
FULDA BIG BAND

TICKETS AVAILABLE AT THE NEW PALACE THEATRE BOX OFFICE - 102 EAST MAIN STREET

SONGS INCLUDE: TEA FOR TWO, SENTIMENTAL JOURNEY, IN THE MOOD, STRING OF PEARLS, STORMY WEATHER, BIRTH OF THE BLUES, TUKEYO JUNCTION, STAR FELL ON ALABAMA, LITTLE BROWN JUG, AMERICAN PATROL... AND MANY MORE!

BOX OFFICE 507.283.4339

WWW.PALACETHEATRE.US
FACEBOOK.COM/PALACETHEATRELU



LUVERNE FALL CITY-WIDE GARAGESALE

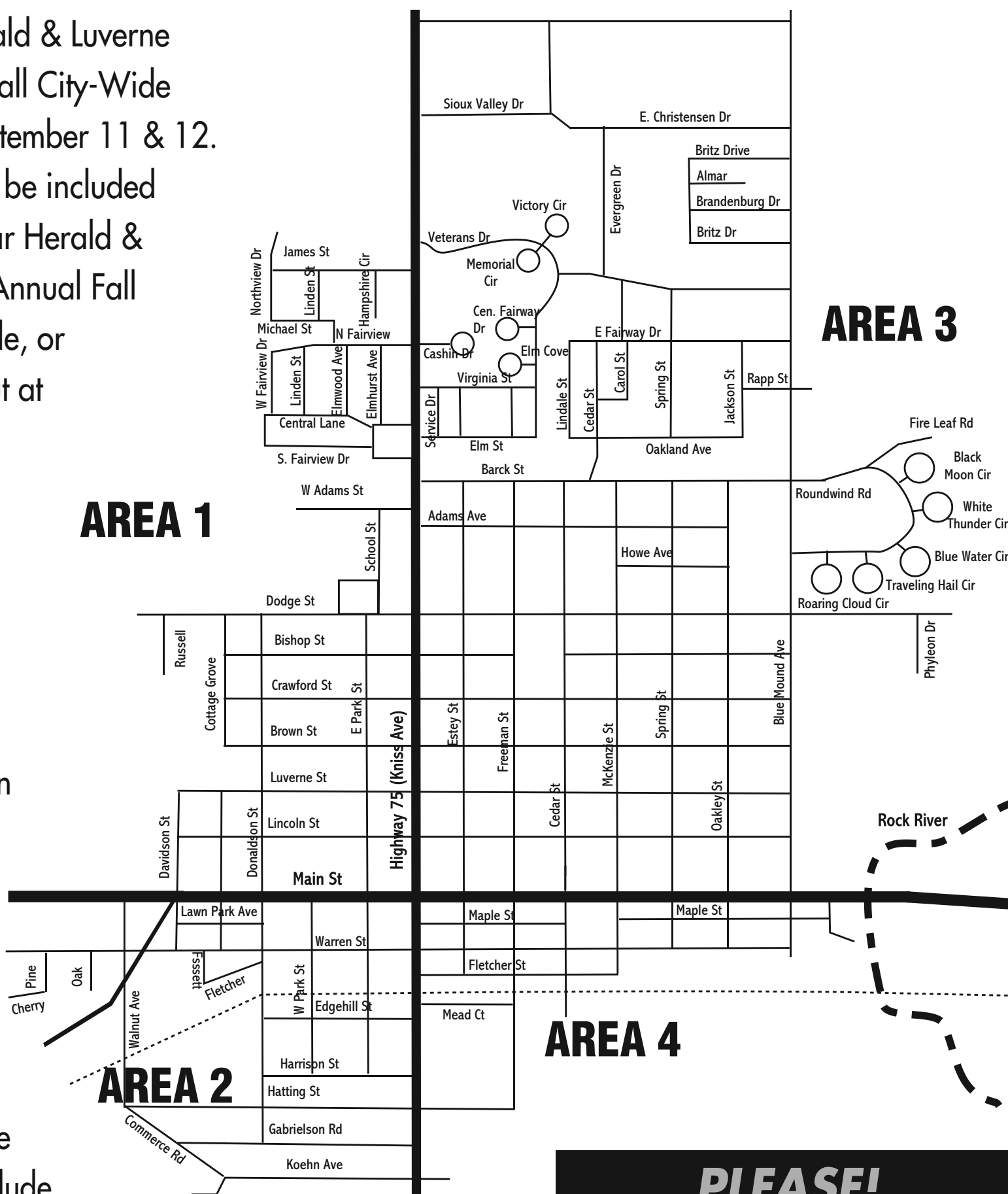
FRI & SAT, SEPTEMBER 11 & 12

Rock County Star Herald & Luverne Announcer's Annual Fall City-Wide Garage Sales are September 11 & 12.

Use the form below to be included in the Rock County Star Herald & Luverne Announcer's Annual Fall City-Wide Garage Sale, or stop by and fill one out at our office at 117 W. Main St.

Ads must be paid for before they will run.

All of the garage sale ads will be published in the *Rock County Star Herald* and *Luverne Announcer* with a Garage Sale header & September 11 & 12 date on top of the page - you don't need to include these in your ad. Also included will be a map divided into 4 areas. The garage sales will be divided by area on the page to assist those going to your sale.



PLEASE! LIST THE AREA YOUR ADDRESS FALLS IN!

Dividing lines are Hwy. 75 (Kniss Ave.) & Main Street - see map

****** NOTE: An additional \$4 will be charged for an additional address placed in an ad. Limit 2 addresses per coupon. ******

Your ad will look like this:

000 Any Street
Sat., 00 am - 00 pm
Group rummage sale! Children's and adult clothing, toys and other miscellaneous items. Also, baked items and crafts.

Please list your address first and time of the sale second! These words will be counted as part of the ad. Also, specify if sale will be Friday & Saturday, or Saturday only.

**ADVERTISING DEADLINE:
Tues., Sept. 1
AT NOON SHARP!**

****** CLIP & USE THIS COUPON ******
All ads will run two times -
SEPT. 6 ANNOUNCER & SEPT. 10 STAR HERALD
 20 words \$15.00 25 words \$17.50 30 words \$20.00
 Please mail your check with this coupon! **PAYMENT REQUIRED WHEN COUPON IS TURNED IN!**

Address _____
 Day(s) & Time(s) _____
 Ad copy _____

 NAME _____
 PHONE _____ AMT. PAID _____
 CC# _____
 _____ MC _____ Visa _____ Disc. _____ Exp. Date _____
 SIGNATURE _____

PLEASE CIRCLE AREA OF SALE!
 1 2 3 4
The Star Herald is not responsible if no area is circled!

MAIL OR DROP OFF AT:
 Rock County Star Herald
 117 W. Main Street
 P.O. Box 837
 Luverne, MN 56156

**Questions?
 Call 507-283-2333**

the classifieds

To place a classified ad in the Luverne Announcer, call 283-2333, stop by our office at 117 W. Main, Luverne, or visit www.star-herald.com.

EMPLOYMENT

OVERNIGHT DIRECT SUPPORT PROFESSIONALS NEEDED (2)

Client Community Services, Inc. (CCSI) has two openings for overnight staff at one of our homes in Luverne, Minnesota.

Position #1:

Insurance Eligible position
Hours: 10 p.m. – 8 a.m.
Week 1: 32 hours; Week 2: 38 hours

Position #2:

Hours: 10 p.m. – 8 a.m. weekdays
10 p.m. – 10 a.m. every other weekend

Direct Support Professionals provide care and program implementation for adults with disabilities in a home setting.

Overnight staff positions are allowed 5 hours of paid sleep time!

Starting Salary after initial training period: \$10.00/hour (\$9.00/hour sleep rate)

CCSI is an Equal Opportunity/Affirmative Action Employer

EMPLOYMENT

EMPLOYMENT

EMPLOYMENT

EMPLOYMENT

EMPLOYMENT

SANFORD

Luverne

Sanford Luverne is accepting applications for the following positions:

Respiratory Therapist—FT or PT	Patient Care Tech—PT
RN—PRN	Environmental Spec.—PT & PRN
Home Health Aide—PRN	Cook—FT & PRN
LPN/TMA Hospice—PRN	EMT/Paramedic—PRN
<small>FT: Full time</small>	<small>PT: Part Time</small>
	<small>PRN: As needed</small>

Please apply online: www.sanfordluverne.org

Luverne Public Schools is seeking applications for the following on-call substitutes:

- teachers (MN teaching license required)
- paraprofessionals
- lunchroom servers
- bus drivers (MN Bus

Endorsement License required).

Submit letter of application to Luverne Public Schools, 709 North Kniss, Luverne, MN 56156. EOE.

www.isd2184.net




Luverne Public Schools is seeking applications for part-time Special Education Paraprofessionals to work three days per week. Two-year college degree preferred. Submit letter of application and resume to Luverne Public Schools, 709 North Kniss, Luverne, MN 56156. EOE.

www.isd2184.net

MN VETERANS HOME

The MN Veterans Home is accepting applications for a **part-time student worker** to assist with Housekeeping services. Duties include sweeping, vacuuming, mopping, soiled linen and trash removal, cleaning bathrooms, and other related assigned tasks. Applicants must be at least 16 years old and be enrolled in secondary, post-secondary or graduate study programs. Must be able to work independently with limited direction. This position will be scheduled every other weekend, 9:30 am – 12:00 pm.

Hourly wage: \$10.50.

Submit resume online at www.mn.gov/mmb/careers/
Requisition #15MDVA000443
Application deadline: August 14, 2015.
Call 507-283-6211 for further information.
AA/EOO



Scale Operator

Part-Time Positions
Pipstone, Minn.

This is an excellent opportunity for qualified individuals interested in:

- Working in a state-of-the-art grain facility
- Team environment
- Working toward career advancement
- Competitive salary

As a scale operator, you will:

- Weigh and grade inbound and outbound grains
- Provide a high level of customer service by displaying courteous, helpful, knowledgeable interactions and behaviors
- Be an involved/engaged member of a team and be willing to act and think independently

We invite you to apply online at www.cargill.com.

> Click on *Careers* > *Select Search Jobs & Apply Job # PIP00081*

You must complete the online application process in order to be considered. If you do not have access to the Internet, please visit your local library or job service, or you can apply online at our Cargill office.

Cargill, Inc.
Terrance Wright, Plant Manager
507-825-5841

Cargill, Inc. an Equal Opportunity Employer

HELP WANTED

Edgerton Public School is accepting applications for the following positions:

Long Term Substitute Choir and Music Teacher

Grades 7-12 Choir and K-3 general music beginning 9/21/15

Substitute Teachers MS/HS Math Teacher

Ability to attain Minnesota licensure required.

Please send application including cover letter, resume, transcripts, copy of MN teaching license, and 3 letters of recommendation to:

Dawn Sandbulte, Personnel Director
Edgerton Public School
P.O. Box 28
Edgerton, MN 56128

ECFE Paraprofessional

Applications can be picked up in the district office.

CADNET NATIONAL ADVERTISING NETWORK



ANNOUNCEMENTS

STRUGGLING WITH DRUGS, ALCOHOL, OR PILLS? YOU DON'T NEED TO STRUGGLE ALONE. TAKE THE FIRST STEPS TO RECOVERY AND CALL NOW. CALL THE KICK ADDICTION NETWORK 800-883-9134

AUTOS WANTED

TOP CASH FOR CARS, ANY CAR/TRUCK, RUNNING OR NOT. CALL FOR INSTANT OFFER: 1-800-454-6951

A-1 DONATE YOUR CAR FOR BREAST CANCER! HELP UNITED BREAST FOUNDATION EDUCATION PREVENTION & SUPPORT PROGRAMS. FAST FREE PICKUP - 24 HR RESPONSE - TAX DEDUCTION 855-403-0213

BUSINESS SERVICES

DISH TV STARTING AT \$19.99/MONTH (FOR 12 MOS.) SAVE! REGULAR PRICE \$34.99 ASK ABOUT FREE SAME DAY INSTALLATION! CALL NOW! 877-

648-0096

HEALTH & FITNESS

VIAGRA 100MG AND CIALIS 20MG! 50 PILLS \$99.00 FREE SHIPPING! 100% GUARANTEED. CALL NOW! 1-866-312-6061

VIAGRA 100MG, CIALIS 20MG, 40 TABS +10 FREE, \$99 INCLUDES FREE SHIPPING. 1-888-836-0780 OR METRO-MEDS.NET
FREE PILLS! VIAGRA! 100MG, CIALIS 20MG, 40 PLUS 4FREE! \$99.00. THE ORIGINAL 1-888-797-9024

WANTED TO BUY

WANTS TO PURCHASE MINERALS AND OTHER OIL AND GAS INTERESTS. SEND DETAILS TO P.O. BOX 13557 DENVER, CO. 80201

MISCELLANEOUS

AVIATION GRADS WORK WITH JETBLUE, BOEING, DELTA AND OTHERS- START HERE WITH

HANDS ON TRAINING FOR FAA CERTIFICATION. FINANCIAL AID IF QUALIFIED. CALL AVIATION INSTITUTE OF MAINTENANCE 866-453-6204

CASH FOR CARS, ANY MAKE OR MODEL! FREE TOWING - SELL IT TODAY. INSTANT OFFER: 1-800-864-5784

MAKE A CONNECTION. REAL PEOPLE. FLIRTY CHAT. MEET SINGLES RIGHT NOW! CALL LIVELINKS. TRY IT FREE. CALL NOW: 1-888-909-9905 18+

DISH NETWORK - GET MORE FOR LESS! STARTING \$19.99/MONTH (FOR 12 MONTHS!) PLUS BUNDLE & SAVE (FAST INTERNET FOR \$15 MORE/MONTH.) CALL NOW! 1-800-615-4064

DISH TV STARTING AT \$19.99/MONTH (FOR 12 MOS.) SAVE! REGULAR PRICE \$34.99 ASK ABOUT FREE SAME DAY INSTALLATION! CALL NOW! 877-477-9659

ADVERTISE TO 10 MILLION HOMES ACROSS THE USA! PLACE YOUR AD IN OVER 140 COMMUNITY NEWSPAPERS. WITH CIRCULATION TOTALING OVER 10 MILLION HOMES. CONTACT INDEPENDENT FREE PAPERS OF AMERICA IFPA

AT DANIELLEBURNETT-IFPA@LIVE.COM OR VISIT OUR WEBSITE CADNETADS.COM FOR MORE INFORMATION.

READER ADVISORY: THE NATIONAL TRADE ASSOCIATION WE BELONG TO HAS PURCHASED THE ABOVE CLASSIFIEDS. DETERMINING THE VALUE OF THEIR SERVICE OR PRODUCT IS ADVISED BY THIS PUBLICATION. IN ORDER TO AVOID MISUNDERSTANDINGS, SOME ADVERTISERS DO NOT OFFER EMPLOYMENT BUT RATHER SUPPLY THE READERS WITH MANUALS, DIRECTORIES AND OTHER MATERIALS DESIGNED TO HELP THEIR CLIENTS ESTABLISH MAIL ORDER SELLING AND OTHER BUSINESSES AT HOME. UNDER NO CIRCUMSTANCE SHOULD YOU SEND ANY MONEY IN ADVANCE OR GIVE THE CLIENT YOUR CHECKING LICENSE ID OR CREDIT CARD NUMBERS. ALSO BEWARE OF ADS THAT CLAIM TO GUARANTEE LOANS REGARDLESS OF CREDIT AND NOTE THAT IF A CREDIT REPAIR COMPANY DOES BUSINESS ONLY OVER THE PHONE IT IS ILLEGAL TO REQUEST ANY MONEY BEFORE DELIVERING ITS SERVICE. ALL FUNDS ARE BASED IN US DOLLARS. TOLL FREE NUMBERS MAY OR MAY NOT REACH CANADA.

Midwest Free Community Papers Midwest Classifieds

Call 507-825-3333 or 800-325-6440 to place your Minnesota Free Community Paper classified ad.

EMPLOYMENT/HELP WANTED

TEAM DRIVER WANTED: Dedicated run from St. Paul, Minnesota to Frankfort, Indiana. Tuesdays through Saturdays, Competitive Wage, CDL required. Call 563-580-6648 (MCN)

AUTOMOBILES/MOTORCYCLES WANTED

CASH FOR CARS: All Cars/Trucks Wanted. Running or Not! Top Dollar Paid. We Come To You! Any Make/Model. Call For Instant Offer: 1-800-871-9134 (MCN)

MOTORCYCLES WANTED: 60's and 70's Motorcycles. DEAD OR ALIVE! 920-371-0494 (MCN)

ANNOUNCEMENTS

GUN SHOW, August 21st, 22nd, 23rd Westfair - Fairgrounds, Council Bluffs Iowa. Friday 4pm-9pm, Saturday 9am-5pm, Sunday 9am-3pm. Large Selection of Guns and Ammunition for sale. For more information, call 563-608-4401 (MCN)

Machinery Consignment Sale, Mon. SEPT 14, 2015 at 9:00 A.M. Consign early by Aug 28, 2015 for complete advertising. No Small Items. Tires or Pallet Items Accepted After Friday, Sept. 4. Next REC Consignment Sale is Oct. 10, 2015. Gilbert's Sale Yard, LLC, 641-398-2218. 2 Mi. N. of Floyd, IA on Hwy. 218. Tractor House Internet Bidding Available. www.gilbertsleyard.com (MCN)

FOR SALE

TRAILER SALE!! "15" different styles of DUMP trailers. Used \$1,899.00; 12' \$5,499.00; 14' 14,000# \$6,798.00 with tarp; 6'x12' V-nose ramp \$2,750.00; 7'x16' V-nose Ramp \$4,546.00; Aluminum & Steel utilities; www.FordDodgeTrailerWorld.com for Prices!! 515-972-4554 (MCN)

AUTOMOBILES

CASH FOR CARS: Any Make, Model or Year. We Pay MORE! Running or Not Sell your Car or Truck TODAY Free Towing! Instant Offer: 1-888-420-3805 (MCN)

Cars for Troops! Donate your car and help the military charity of your choice. Fast, free pickup. Tax Deductible. Call Now! 800-955-1628 (MCN)

DONATE YOUR CAR, TRUCK OR BOAT TO HERITAGE FOR THE BLIND. Free 3 Day Vacation, Tax Deductible, Free Towing, All Paperwork Taken Care Of. 1-800-283-0205 (MCN)

ADOPTION

A UNIQUE ADOPTIONS, LET US HELP! Personalized Adoption Plans. Financial Assis-

tance, Housing, Relocation and More. Giving the Gift of Life? You Deserve the Best. 1-888-837-8200. 24HR Hotline. (VOID IN IL) (MCN)

PREGNANT? CONSIDERING ADOPTION? Call Us First! Living expenses, Housing, Medical and continued support afterwards. Choose Adoptive Family of Your Choice. Call 24/7. ADOPT CONNECTION 1-866-951-1860 (Void in IL & IN) (MCN)

EMPLOYMENT/HELP WANTED

CLASS-A CDL. Regional Driver. Good home time. Great pay and benefits. Matching 401k. Bonuses and tax free money. No touch freight. Experience needed. Call Scott 507-437-9905. Apply on-line www.mcfgt.com (MCN)

MAKE \$1000 Weekly!! Mailing Brochures From Home. Helping home workers since 2001. No Experience Required. Start Immediately! www.newmailers.com (VOID IN SD, WI) (MCN)

MAKE \$1,000 WEEKLY!! Paid in advance! Mailing Brochures at Home! Easy pleasant work. Begin Immediately! Age unimportant! www.HomeProfitsBiz45.com (MCN)

WANT TO BUY CASH for sealed, unexpired DIABETIC TEST STRIPS or STOP SMOKING PRODUCTS! Make money and help others! Top prices, free shipping, 24 hr. payments and friendly service! Call 1-888-440-4001 or TestStripSearch.com (MCN)

FINANCIAL Delete bad credit in just 30 days! Legally remove judgments, collections, charge-offs, bankruptcies, medical bills, etc. Raise your credit score fast! Free to start. Call now (844) 560-7687. A+ rating W/BBB. (MCN)

CALL NOW to secure a super low rate on your Mortgage. Don't wait for Rates to increase. Act Now! Call 1-888-788-8005 (MCN)

HEALTH & MEDICAL CASH PAID for unexpired, sealed DIABETIC TEST STRIPS! 1 DAY PAYMENT & PREPAID shipping. HIGHEST PRICES! Call 1-888-389-0695. www.cash4diabeticsupplies.com (MCN)

FREE PILLS! VIAGRA! CIALIS! 100mg/20mg 40 +4 Free Only \$99! The original Little Blue Pill! Save \$500! Trusted! Call 1-888-796-8871 (MCN)

VIAGRA 100mg, CIALIS 20mg, 40 tabs +10 FREE, \$99 and FREE SHIPPING. 1-888-

836-0780 or Metro-Meds.net (MCN)

LOW TESTOSTERONE? Enhance Your Levels - No Prescription Needed. Try it before you buy with our FREE SAMPLE OFFER! No credit card needed - Absolutely free! Call: 855-854-6300 (MCN)

CPAP/BIPAP supplies at little or no cost from Allied Medical Supply Network! Fresh supplies delivered right to your door. Insurance may cover all costs. 800-851-3046 (MCN)

LIVING WITH KNEE PAIN? Medicare recipients that suffer with knee pain may qualify for a low or no cost knee brace. Free Shipping. Call now! 855-948-5623 (MCN)

ATTENTION: VIAGRA AND CIALIS USERS! A cheaper alternative to high drugstore prices! 50 Pill Special - \$99 FREE Shipping! 100 Percent Guaranteed. CALL NOW: 1-800-795-9687 (MCN)

Canada Drug Center is your choice for safe and affordable medications. Our licensed Canadian mail order pharmacy will provide you with savings of up to 75 percent on all your medication needs. Call today 1-800-263-4059 for \$10.00 off your first prescription and free shipping. (MCN)

MISCELLANEOUS ATTENTION POLE BUILDING CONTRACTORS! STOP LIFTING POSTS THE OLD WAY! If you set Posts For A Living, You Must See This Revolutionary Skid Steer Attachment! See our video at www.TheButtPostGrabber.com or call Scott at 208-964-6666 (MCN)

DISH NETWORK - \$19 Special, includes FREE Premium Movie Channels (HBO, Showtime, Cinemax, and Starz) and Blockbuster at home for 3 months. Free installation and equipment. Call NOW! 1-866-820-4030 (MCN)

\$14.99 SATELLITE TV. Includes free installation. High speed internet for less than \$50 a day. Low cost guarantee. Ask about our FREE IPAD with Dish Network. Call today 1-855-331-6646 (Not available in NE) (MCN)

STOP GNAT & MOSQUITO BITES! Buy Swamp Gator Natural Insect Repellent. Family & Pet Safe. Available at Hardware Stores or Buy Online at homedepot.com (MCN)

AUTO INSURANCE STARTING at \$25/ Month! Call 877-929-4394 (MCN)

GET HELP NOW! One Button Senior Medical Alert. Falls, Fires & Emergencies happen. 24/7 Protection. Only \$14.99/mo. Call NOW! 1-888-840-7341 (MCN)

ADT Security protects your home & family from "what if" scenarios. Fire, flood, burglary or carbon monoxide. ADT provides 24/7 security. Don't wait! Call Now! 1-888-607-9294 (MCN)

FIND THE RIGHT CARPET, Flooring & Window Treatments. Ask about our 50% off specials & our Low Price Guarantee. Offer Expires Soon. Call now 888-899-5481 (MCN)

YOU COULD SAVE OVER \$500 off your auto insurance. It only takes a few minutes. Save 10% by adding property to quote. Call Now! 1-844-373-3655 (MCN)

19.99/mo. for DIRECTV - HD Channels + Genie HD DVR + 3 months FREE HBO, SHOW, MAX & STARZ + FREE NFL Sunday Ticket! Included (Select Packages) New Customers Only. Call 1-800-269-4217 (MCN)

Get CABLE TV, INTERNET & PHONE with FREE HD Equipment and install for under \$3 a day! Call Now - Toll Free! 1-844-373-3655 (MCN)

DIRECTV Starting at \$19.99/mo. FREE Installation. FREE 3 months of HBO SHOWTIME CINEMAX, STARZ. FREE HD/DVR Upgrade! 2015 NFL Sunday Ticket Included (Select Packages) New Customers Only. Call 1-800-269-4217 (MCN)

DISH NETWORK - Get MORE for LESS! Starting \$19.99/month (for 12 months). PLUS Bundle & SAVE (Fast Internet for \$15 more/month). CALL NOW 1-800-390-3140 (MCN)

ALL THINGS BASEMENTY! Basement Systems Inc. Call us for all of your basement needs! Waterproofing, Finishing, Structural Repairs, Humidity and Mold Control. FREE ESTIMATES! Call 1-800-640-8195 (MCN)

PERSONALS MEET SINGLES RIGHT NOW! No paid operators, just real people like you. Browse greetings, exchange messages and connect live. Try it free. Call now: 800-357-4970 (MCN)


COMPUTERS & SUPPLIES Computer problems - viruses, lost data, hardware or software issues? Contact Geeks On Site! 24/7 Service. Friendly Repair Experts. Macs and PCs. Call for FREE diagnosis. 1-800-640-7650 (MCN)

ENGINEERING TECHNICIAN ROCK COUNTY LAND MANAGEMENT OFFICE

The Rock County Administrator is now accepting applications for the position of Engineering Technician for the Rock County Land Management Office until August 24, 2015 at 5:00 PM. Responsibilities include providing assistance to landowners for implementation of conservation practices using a wide array of programs. Duties will include making personal, one on one contacts with prospective, long-term conservation program participants and provide technical assistance to interested landowners in collaboration with local, state and federal agencies (SWCD, NRCS, FSA, DNR, MCPA etc). A majority of the work is conducted outdoors. Minimum qualifications include a High School diploma or equivalent with a minimum of a 2-year degree in a related field and 1-year of work related experience. This position is a full time grant funded position with full benefits; starting hourly wage range will be \$18.75 - \$21.10, DOQ; grant funding is for 3-5 years with possible period extensions.

To obtain a job description and an application for this position, please access the following website at co.rock.mn.us/employment.html or contact Rock County Administrator's office at 507-283-5065 or email susan.skattum@co.rock.mn.us. Office hours are from 8:00 a.m. to 5:00 p.m., Monday through Friday.

An Equal Opportunity Employer



Master Electrician
- Shift negotiable
- Salary based on experience

POSITION SUMMARY: The Master Electrician is responsible for safely completing industrial wiring of equipment and the facility. Installs, repairs, monitors, maintains, and modifies all equipment at the Luverne processing facility, ensuring safe, efficient equipment performance.

KNOWLEDGE, SKILLS AND ABILITIES

- Licensed by the State of Minnesota as Master Electrician.
- General knowledge of plant maintenance & experienced in the operation of maintenance power tools.
- Ability to troubleshoot problems by analyzing, evaluating and solving electrical problems.
- Ability to follow both written and verbal directions as well as read and follow diagrams and instruction manuals.
- Ability to work with minimal supervision.
- Computer ability and basic computer knowledge.
- Good verbal and written communication skills.

Application deadline: Open until filled.
Interviews begin immediately.
Please apply online at gnpcompany.com
An Affirmative Action/Equal Opportunity Employer

the classifieds

To place a classified ad in the Luverne Announcer, call 283-2333, stop by our office at 117 W. Main, Luverne, or visit www.star-herald.com.

EMPLOYMENT

CDL-A Drivers for scheduled Mail Route between Worthington and Minneapolis. \$19.65/hr. plus Fringe Benefits. Must meet DOT reg. Dizco Inc.: 1-800-727-7407. (8.9-8.20)

Immediate opening for a Full-time Sales Position/Office Assistant. Position includes cellular sales and service, internet sales and helping with general office procedures. Applicant should have a strong background in customer service, computer knowledge, good written and oral communication skills and the ability to work independently in a fast paced environment. Send a resume and letter of application to: Lismore Telephone Company, PO Box 127, Lismore, MN 56155 or email to: info@lismoretele.com. (8.2-8.20)

Wanted: Needs someone to do yard work, mostly flower beds. Call 507-669-2585. (7.26-8.13)

Green Lantern, Hardwick is seeking bartenders, waitresses, cooks, full or part-time positions. Nights and daytime positions available. Stop in and talk to JR. (tc)

EMPLOYMENT

Nursing Assistant-Parkview Manor has openings for full-time nurse aides. Benefits to include health insurance, public retirement and holiday pay. Starting wage \$10.86. Will provide training or pay for experience. Will need day and night shift staff and part-time all shifts. Contact Darnell Krull, 308 Sherman Ave., Ellsworth, MN 56129 or call (507) 967-2388. (tc)

Registered Nurse/LPN-Parkview Manor, a municipal skilled nursing facility is accepting applications for a part-time charge nurse position. Wages commensurate with experience. Benefits include vacation, holiday and PERA retirement plan. Contact Darnell Krull, 308 Sherman Ave. Ellsworth, MN 56129 or call 507-967-2482. (tc)

EXTRA MONEY? Work part-time of full-time from your home office with our wellness company. No stocking, selling, or delivery. Computer required. www.NewFreedom4u.com. Biz. Call 507-962-3444 or 507-227-7975. (tc)

WINDOWS

We custom build and install Energy Star Therm-O-Loc Windows. Call Mike at Adrian Glass for a free in-home demonstration and estimate. 101 E. Pearl, Adrian, MN 56110. 507-483-2228. (tc)

WANTED

Buying old cars, trucks, scrap iron, old farm equipment, tin, wire. Ericksen Salvage, Charlie Ericksen, 605-254-4654. (tc)

RENTALS

For rent: Nice, quiet, two-bedroom apartment. No smoking, no pets. Great neighbors. Located in Hills, MN. Call Al 605-759-4149. (8.9-8.27)

One-bedroom ground floor duplex. Stove/refrigerator included. Laundry hookups. W/D available. Off-street parking, \$350 plus deposit/utilities. References needed. Call 283-3674 or 952-285-5429. (7.23-8.9)

Centennial Apartments has a one-bedroom, no smoking apartment available. All utilities included except cable and phone. Section 8 assistance available. Must be 50, handicapped or disabled. Call 507-283-2652. EHO. (tc)

FOR SALE

1914 Rock County MN Atlas. Including Plat book. 701-332-6757. (8.2-8.20)

RENTALS

Two-bedroom house in Jasper, Minnesota. No pets. Must have good rental history and job history. \$350/month plus deposit. Call 605-413-8862. (7.23-8.9)

For Rent: Large one-bedroom upstairs apartment. Includes utilities, stove, refrigerator and A/C. No pets and references needed. Call 507-227-1589. (tc)

For Rent: One-bedroom, second floor apartment in downtown Luverne. Older building with updates. \$290 plus utilities. No pets. Call 605-201-6427. (tc)

Nice, smaller home, full basement, garage, stove and refrigerator. No pets. Must have good rental history and work history. Call 605-594-3544. (7.26-8.13)



BLUE MOUND TOWER

Apartments available! Rent based on income or flat rent. Includes utilities, laundry facility and secure entry.

Luverne HRA • Blue Mound Tower
216 McKenzie Street
Luverne, MN 56156

507-283-4922 EHO



Oakwood Apartments

401 Oak St., Ellsworth

• 1 Bedroom Unit Available

Unit Available

Water, Sewer & Garbage Included.

Rent Based on Income

AVAILABLE IMMEDIATELY

Van Binsbergen & Associates, Inc.
320-269-6640 ext. 22

Equal Housing Opportunity

www.vanblc.com



Catch the specials

at Damax Apartments

602 E. Warren St, Luverne, MN

Inquire about move-in specials

No income limits

1 & 2 Bedrooms

Newly Remodeled

Van Binsbergen & Associates, Inc.
320-269-6640 ext. #22

www.vanblc.com



Jasper Sunrise Village

~ Assisted Living ~

The Sunrise Village is designed with you in mind.

In our assisted living you will enjoy comfortable independent living, nutritious meals, health care support, fellowship and many more services for you to live a carefree life.

Apartments are now available.



Jasper Sunrise Village
100 Roberts Ave N
Jasper, MN 56144
507-348-8620

Where Residents Come First

OPENINGS AVAILABLE
Come and experience our friendly and neighborly community at the Jasper Sunrise Village, Assisted Living located on the hill in Jasper, MN.

Exercise, play cards, bingo or enjoy the different entertainment that comes to Sunrise Village.

No need to worry about your future, financial assistance available, please call Laurie now at 507-348-8620 to schedule an appointment.

JASPER SUNRISE VILLAGE
ASSISTED LIVING
100 Robert Avenue N • Jasper, MN 56144

GARAGE SALES

The Swanson-Nelson Sale is back. Rock County's best two-household garage sale. Thursday, Aug. 13, 4 to 8 p.m.; Friday, Aug. 14, 12 p.m. to 8 p.m.; Saturday, Aug. 15, 9 a.m. to 12 p.m. New, high-end cosmetics (Lancome, Estee Lauder, Clinique, Bare Minerals, Bath and Body). Top-brand children's and adult clothing and accessories (WHBM, Rock Revivals, Miss Me's, BKE, Victoria's Secret, Coach, Eddie Bauer, North Face, Under Armour, Ralph Lauren, Gap, Gymboree). New cosmetic bags, totes, duffels. Household, books, office and school, toys. 105 N. Water Ave, Hills, MN. (8.6-8.9)

Collectors Sale: Friday, Aug. 14, 8 a.m. to 5 p.m.; Saturday, Aug. 15, 8 to 5 p.m. 2035 County Road 4, Magnolia, MN 56158. Antique collectible furniture, lighting, clockworks, beer signs, lights, glassware, advertising, toys, banks, signs, bb guns, knives, auto., misc., sculptures, porcelain, pottery, western and nautical décor, historical items, model cars, tractors, trains, model kits, doll furniture, sports equipment, musical instruments, misc. Twenty years of collecting and this is my first sale. Cash only. (8.6-8.9)

SERVICES

CCS Cleaning Service: Reasonable rates, have been in business for 11 years. References and tax ID #. Please call 712-395-1808. (7.26-8.13)

ELECTROLUX

Central Vacuums • Upright Vacuums
Canister Vacuums
Sales - Service - Supplies
ELAINE BOLT
507-442-7721 Edgerton, MN

Tree Tech Inc.

Luverne, MN
507-283-8552
507-920-6424 cell



tree removal
tree trimming
stump grinding
tree moving

DD Backhoe Service

Doug Dooyema
Hydrants, waterline repairs, tile line repairs, small tile jobs, and hole digging

Call 507-283-8357
or Cell 507-220-8218

MISCELLANEOUS

Call 283-2333 to advertise in the Star Herald & Announcer

MISCELLANEOUS

COMMERCIAL

Office Space for Rent: Ideal downtown location. Quality building. Several sizes available. Utilities included. Call Randy Creeger, 507-220-1105 or randy.creeger@gmail.com. (tc)

AGRICULTURAL

Custom large square baling alfalfa, grass and straw. No job too far. Call David Kramer at 507-967-2140 or 507-360-9963. (tc)

We have several crews of rock pickers and we also do any type of farm work. 712-943-2084. (tc)

CARDS OF THANKS

The family of Gary Johnson would like to thank everyone for their support, prayers, love, cards, visits, food, memorials and flowers. A special thanks to father Tom Jennings for your beautiful funeral service. Ann, Josie and LeAnn LeBrun for the nice lunch you prepared and served.

The Johnson Family
Joan, Dan Pick, Donna and family, Deb and Jerry Remme and family
(8.9-8.13)

The family of Marjorie Staefler would like to thank the staff at Sanford Hospital and Hospice, Dr. Morgan, Jeff at Hartquist Funeral Home, Pastor Mumme, family and friends for your caring thoughts, food, memorials, cards and flowers. Your thoughtfulness is greatly appreciated.

The family of Marjorie Staefler
(8.9-8.13)

The American Red Cross wants to thank all the volunteers who made the blood drive a special event, before, during and after, especially the blood donors. We went over our goal. I had one donor receiving a 9 gallon pin. Thanks again everyone. (8.6-8.9)

MISCELLANEOUS

HAVE A UNIQUE SERVICE OR BUSINESS? Get the word out to over 1.4 million households. Call WIDE AREA CLASSIFIEDS today, 507-359-7326. (tc)

WANTED OLD JAPANESE MOTORCYCLES

KAWASAKI— Z1-900(1972-75), KZ900, KZ1000(1976-1982), Z1R, KZ1000MK2(1979,80), W1-650, H1-500(1969-72), H2-750(1972-1975), S1-250, S2-350, S3-400, KH250, KH400, SUZUKI—GS400, GT380, HONDA—CB750K(1969-1976), CBX1000(1979,80)



\$\$ CASH \$\$
1-800-772-1142
1-310-721-0726
usa@classicrunners.com

HELP WANTED RN/LPN/CNA Full & Part-time

Benefits include: Vacation, Sick, and Holiday Pay, Health Insurance, Matching Pension Plan, Flexible Hours, and Employee Meals

New competitive wages!
~Call OR STOP BY TODAY!~
Tuff Memorial
505 E 4th St • Hills, MN
507-962-3275
"A Home with a Heart"

HELP WANTED
Age 55+ workers needed for part-time custodial work at the rest areas near Luverne.
Contact Green View
651-639-1913

Advertise in the Classifieds and see results!
283-2333

FULL TIME HELP WANTED

We are looking for a mechanically talented individual who has a class A CDL with a clean driving record. Must accurately deliver feed orders to local farms & follow protocols; back up operate the feed mill

Mon-Fri 7:30 am - 5:00 pm 45-46 hours per week
Stop by Lester Feed & Grain for an application
Or print online at www.lesterfeedandgrain.com

Stop by Lester Feed & Grain for an application
Or print online at www.lesterfeedandgrain.com

HELP WANTED
Caregiver/Cook
Part-Time • Day Shift
1-2 days a week, every other weekend
Apply Monday - Friday 8am - 5pm

JASPER SUNRISE VILLAGE
100 Robert Ave. N • Jasper, MN 56144
Phone: 507-348-8620

Luverne Public Schools is seeking applications for a full-time Custodian. Day hours during summer/ evening hours during school year. Shift differential paid after 6 p.m. Benefits include medical insurance, holidays, vacation and sick leave. Submit letter of application and resume to Luverne Public Schools, 709 North Kniss, Luverne, MN 56156. EOE.
WWW.ISD2184.NET

GET MORE FROM YOUR DAY
WITH THE STAR HERALD

AM
AVIATION INSTITUTE OF MAINTENANCE

AIRLINE CAREERS

Get FAA approved maintenance training at campuses coast to coast. Job placement assistance. Financial Aid for qualifying students. Military friendly.

Call Aviation Institute of Maintenance
800-481-7894

CASH FOR CARS

All Cars/Trucks Wanted! Running or Not! Damaged/Wrecked...OK! FREE Pick-Up and Towing! Sell your car in 60 seconds!

CALL NOW FOR A FREE GUARANTEED OFFER!
1-888-524-9668
www.cashforcars.com



WEDNESDAYS
for Women

\$10 off Oil Change
\$5 off Wiper Blades
Tire Alignment Check only \$19.95

Every Wednesday in August & September for women only!

Register for Weekly Drawings

624 South Kniss Avenue, Luverne, MN
855-383-4427 • 507-283-4427 • www.hermanmotor.com

HILLS-BEAVER CREEK SCHOOL DISTRICT

Request for Quotes

The Board of Education of Independent School District No. 671, also known as Hills-Beaver Creek School District, will receive sealed firm quotes for delivery of 13,000 Gallons of Heating Fuel Oil at its Elementary Site in Beaver Creek (2,000 gallon tank capacity) and delivery of 25,000 Gallons of Liquid Propane delivered to two District Sites in Hills, MN. Quote must indicate that they are able to furnish trained and certified LP gas service within 24 hours.

All quotes are to be sealed and mailed to Glenda Kuehl, Business Manager at Hills-Beaver Creek School District, PO Box 547, 301 N. Summit, Hills, Minnesota 56138 and received on or before 3:00 P.M., Thursday, August 20 at the District Office. Quotes will be publicly opened after the submission deadline.

The Board reserves the right to accept or reject any or all quotes in whole or in part. The Board also reserves the right to waive any formalities without cause and without explanation to any bidders.

Hills-Beaver Creek District No. 671
Lois Leuthold, Clerk of the Board

Devon Fluit

Custom Manure Handling

507-220-0067

Flow Control
No Till Injectors
GPS Rate Mapping
Pit Additives
Nitrogen Stabilizer Additives

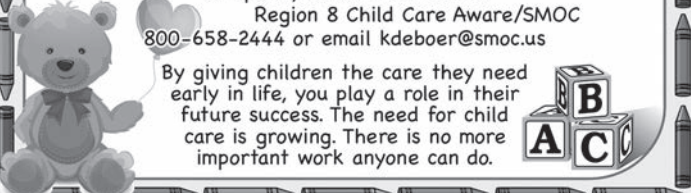



Have you ever thought about a career in early childhood?
Does the idea of providing education and care for children in a family environment appeal to you?
There is great need for quality, professional child care providers, especially those who are interested in working with infants.

For information about the family child care licensing process, please contact:
Southwest Health and Human Services
507-283-5070

For other questions about the need for quality child care contact:
Region 8 Child Care Aware/SMOC
800-658-2444 or email kdeboer@smoc.us

By giving children the care they need early in life, you play a role in their future success. The need for child care is growing. There is no more important work anyone can do.

HOCKEY REGISTRATION NIGHT

2015-2016 SEASON

Wednesday, August 12
5 to 7:30 p.m.
Blue Mound Ice Arena

Come register and receive a free burger basket at the Howling Dog!

Updated registration forms will be online Friday, August 7

Questions call Jeremy Sudenga
507-920-9240

Parents: You may not be ready for your student to leave home, but are they prepared to take care of their own finances while they are away? At **First Farmers & Merchants**, we're here to help your student take control of their money before they leave home. Stop in or call today!

Are your COLLEGE STUDENTS prepared to leave home?

Touchbanking App:
Mobile Deposit
Check Balance
Transfer Funds
Popmoney
Pay Bills

Available on the App Store
ANDROID APP ON Google play
Find us on Facebook



If they already have an account, are they enrolled in:

- **Bill Pay** to automatically pay bills
- **Ready-Check*** overdraft protection
- **Touchbanking*** Mobile App
- **Online Banking**
- **Popmoney** account to send & receive money
- **e-Statements**

Do they need:

- A Cash or Check Card
- A MasterCard Gift Card
- Or maybe they need to **OPEN** an account!

Send Money to Others Using Your Smartphone. **popmoney**

For the same cost as a postage stamp!

First Farmers & Merchants

303 E. Main St. | Luverne
507-283-4463 | www.ffmbank.com

Sign up for **online BILL PAY**
Receive the first 3 months **FREE!**
*Regularly \$4.95/mo.

We believe in you.™
Member FDIC. And the community.

www.STAR-HERALD.com

AUGUST 6TH THRU AUGUST 12TH, 2015

STORE CLOSING



30% TO 50% off
HOME APPLIANCES



30% off
LAWN & GARDEN



30% TO 40% off
TOOLS



60% off
MATTRESSES



30% off
SPORTING GOODS & VACUUMS

THIS LOCATION ONLY!
LUVERNE
500 East Main Street
Luverne, MN 56156

sears
HOMETOWN STORE
LOCALLY OWNED AND OPERATED

Mark's PLUMBING, HEATING AND A/C, LLC.
 Lic.# PC644664 Master Plumber Lic#066849-PM
 608 W. Hatting, Luverne • Mark Kurtz, owner
507-283-9245


A.O. Smith Water Heaters Gas & Electric
 TEMPSTAR Heating and Cooling Products
 MOEN Faucets

Attn: Ketterling Services, Inc. will drop off & pick up **DEMOLITION CONTAINERS** for any size repair or remodeling job.

Ketterling Services, Inc.
 401 S. Cedar Luverne, MN
 507-283-2863
 www.ketterlingservicesinc.com
 Call Carolyn or Bill with any questions

Read The **Announcer Online Edition**
 Star-Herald.com

AGRICULTURAL SOLUTIONS THROUGH THICK & THIN



WE ARE AG!
 It's what we do.

Knowledge. Experience. Sound Advice.

People doing business with people. It's as simple as that.

- Machinery Loans & Leasing Options
- Operating Loans
- Real Estate Loans
- Livestock Loans

Luverne (Downtown) 116 East Main Street (507) 283-2366
 Luverne (Highway 75) 800 South Kniss (507) 283-9131

MINNWEST BANK Member FDIC

We'll see it through.

CONGRATULATIONS TO THE 2015 LUVERNE FARM STORE ROCK COUNTY FAIR WINNERS

How many colored pieces of paper in the jar? **ANSWER: 1,565**

WINNERS

Wendel Buys
 Andrea Severtson
 Kalia Jarchow
 Maddie Stegenga
 Steve Vis

WINNERS MUST STOP AT THE FARM STORE TO CLAIM PRIZES!

Since 1948
LUVERNE FARM STORE
 Quality & Service



Sum•mer /n./
 - The hotter half of the year.
 Beat the heat with **Star-Herald.com**

DEBOER EDGERTON SUMMER BLOWOUT SALE

DON'T MISS OUT ON THESE GREAT PRICES

NEW 2015 CHEVROLET SILVERADO 2500HD LTZ, Z71, DURAMAX, LEATHER, NAV #15198 WAS: \$60,540 \$56,540	NEW 2014 CHEVROLET CRUZE 2LT, TURBO DIESEL, LTR, SUNROOF #14151 WAS: \$27,075 \$21,925	NEW 2015 CHEVROLET IMPALA LT, HEATED LEATHER #15145 WAS: \$34,985 \$32,485	NEW 2015 CHEVROLET MALIBU LT #T1507 WAS: \$27,545 \$25,045	NEW 2015 CHEVROLET SILVERADO LT #T1505 WAS: \$45,595 \$40,345	NEW 2015 CHEVROLET SILVERADO LT, Z71, ALL STAR EDITION #15142 WAS: \$43,275 \$39,025
NEW 2015 CHEVROLET TRAVERSE LT, AWD #15175 WAS: \$25,315 \$24,315	2014 BUICK ENCLAVE CXL, HTD LTR, DUAL MOONROOF, 17K #A1513 WAS: \$36,970 \$35,980	2014 CHEVROLET EQUINOX LTZ, SUNROOF, HEATED LTR, 11K #14189A NADA: \$29,475 WAS: \$29,490 \$27,900	2014 CHEVROLET SONIC LT, 12K #A1515 WAS: \$13,940 \$12,450	2014 CHEVROLET TRAVERSE LT, AWD, CONVENIENCE PKG, 19K #A1508 WAS: \$30,000 \$28,940	2013 GMC ACADIA SLT, HEATED LEATHER, 33K #P1509 WAS: \$32,950 \$30,450
2011 CHEVROLET SILVERADO LTZ, HTD LEATHER, SUNROOF, 20K #15167B NADA: \$33,850 WAS: \$32,950 \$31,450	2011 GMC SIERRA 3500HD DENALI, DURAMAX, 41K #15179A NADA: \$52,100 WAS: \$47,960 \$45,890	2013 JEEP GRAND CHEROKEE LAREDO, 27K #15121B NADA: \$28,875 WAS: \$27,985 \$25,900	2012 BUICK ENCLAVE HEATED LEATHER, 42K #A1509A NADA: \$29,200 WAS: \$28,200 \$26,750	2012 CHEVROLET SILVERADO 2500HD LT, 25K #15201A WAS: \$30,550 \$29,970	2012 FORD ESCAPE LIMITED, SUNROOF, 54K #14192B NADA: \$21,800 WAS: \$20,945 \$17,970
2010 CHEVROLET SILVERADO LTZ, HEATED LEATHER, 69K #1596B WAS: \$27,870 \$25,950	2008 CHEVROLET SUBURBAN LTZ, HTD LTR, DVD, LOADED, 174K #15161A NADA: \$20,950 WAS: \$19,995 \$17,995	2008 BUICK LACROSSE SUPER, 106K #C14SCB NADA: \$11,650 WAS: \$9,950 \$8,900	2006 BUICK RENDEZVOUS CXL, AWD, 131K #A1506A WAS: \$7,750 \$6,900	1999 CHEVROLET TAHOE Z71, 366K #A1430B WAS: \$2,995 \$1,450	1999 PONTIAC MONTANA TRANSPORT, 164K #A1418C NADA: \$2,650 WAS: \$2,495 \$1,295

GM Certified USED VEHICLES CHEVROLET SILVERADO **Auto Check** vehicle history reports **www.deboerchev.com**

930 S. Main St., Edgerton, MN
507-442-4341 or 800-658-2395
 Mon - Fri 8am - 5pm • Wed Nights til 9pm • Sat 8am-12 noon

DEBOER EDGERTON



"EXPERIENCE THE SMALL TOWN DEALER DIFFERENCE"
 Scan this code to browse our entire inventory