

A Luverne ANNOUNCER

PRSR STD
U.S. POSTAGE
PAID
Permit No. 22
Page 1 Printers
Postal Customer

117 West Main St. • Luverne, MN 56156-0837 • Phone 507-283-2333 • Address Service Requested

VOLUME 87 NUMBER 25

ROCK COUNTY'S FREE CIRCULATION PUBLICATION SINCE 1931

June 18, 2017

Community Update

Meetings

Battle Plain Township Board will meet at 7:30 p.m. Tuesday, June 20, at the home of Greg Talsma.

Town and Country Garden Club will meet at 7 p.m. Tuesday, June 27 at Eileen Hemme's home for selecting and preparing plants for entry into the Fair. Call 507-597-6378 with questions.

Caregivers Support Group will meet from 5-6:30 p.m. Tuesday, June 27, at the Mary Jane Brown Home. Call 507-283-5064.

Friends of Blue Mounds State Park will meet at 6 p.m. Tuesday, June 27, in the lower level of the Luverne Chamber office for a planning session that is open to the public. This group is seeking community input and membership interest to enhance the Blue Mounds State Park experience.

Meditation and Mindfulness Practice meets at 7 p.m. every second and fourth Wednesday in the lower level of Hilger Commons at 215 N. Cedar Street in Luverne. For more information call Kim at 507-353-0041 or email kimberlyelizabeth@live.com.

Hardwick Goal Seekers meet every Monday in Hardwick City Hall for the purpose of support and encouragement for weight loss journeys. Weigh-in begins at 6 p.m., and the meeting starts at 6:30 p.m. Call Glenda, 449-0568, with questions.

Narcotics Anonymous will meet every Thursday evening at 6:30 p.m. at the Steen Reformed Church. Contact Robert for more information 507-329-2642.

Women's Alcoholics Anonymous meets at 8 p.m. Mondays in the United Methodist Church.

Narcotics Anonymous meets at 7 p.m. Fridays and for basic text study at 7:30 p.m. Tuesdays in the basement of St. Catherine Catholic Rectory, 203 E. Brown St., Luverne. Use east door. For more information call 507-220-0137.

Alcoholics Anonymous meets at 8 p.m. Wednesdays and Saturdays in the Methodist Church, Luverne. Call 605-321-4324.

Alcoholics Anonymous meets from 8 to 9 p.m. every Tuesday in Runals Hall, Edgerton. Call Naomi, 507-215-2956.

Annual Hospice Memorial Service

Sanford Luverne Hospice invites the public to the Annual Hospice Memorial Service at 7 p.m. Monday, June 19, at the American Reformed Church in Luverne. The service will remember 70 people who died under hospice care this past year (May 1, 2016-May 7, 2017). Family members and friends are invited to attend the short program of music and readings, with refreshments served afterward. For information call 283-1805.

Adrian blood Drive

Sanford Clinic Adrian and Community Blood Bank will host a blood drive from 11:30 a.m. to 1:30 p.m. and from 3 p.m. to 6 p.m. Monday, June 19, at the Adrian Ambulance Garage. All blood donors will receive an All American T-shirt and a free Subway lunch.

Hinky House open Thursdays

The Hinky House will be open from 2 to 4 p.m. every Thursday during the summer.

Author Jason Freeman at library June 19

Author Jason Freeman will read from his book, "Awkwardly Awesome," and answer questions at the Rock County Library from 5-6 p.m. Monday, June 19.

Free events at Touch the Sky Prairie

•Guitarist and vocalist Jim Groth will perform live at Touch the Sky Prairie at 7:30 p.m. Friday, June 23. Touch the Sky Prairie is 3 miles west and two miles north of the Blue Mounds State Park entrance.

•Kristi Franken and Martha Nowatzki will lead a yoga and massage session at 7:30 a.m. Saturday, June 24, at Touch the Sky Prairie.

Annual Eden Lutheran service June 25

The annual Eden Lutheran Church service will be at 11 a.m. Sunday, June 25. The church is two miles east and one mile north of Jasper. Pastor Sue Grinde will conduct the service including special music. A potluck dinner will follow the service with a 1:30 p.m. meeting to follow.

Church cleaning will be at 9 a.m. Saturday, June 24. Call Bev at 348-4126 with questions.

Walking Military Memorial downtown

More than 40 Luverne businesses are participating in a Walking Military Memorial on Main Street. The displays, presented by Remember Rally, include photos, banners, information and uniforms, as a way to thank all our military. The displays will remain until fall.

IN THIS ISSUE

Inside find inserts* from

Teals MARKET

bomgaars
What You Need... When You Need It

SHOPKO
Hometown

*Not all Announcers will have all inserts

Coming this week in the *Rock County Star Herald*

Shrimp is changing Luverne's economy

Tru Shrimp has announced Luverne will be its first harbor for a multi-million dollar aquaculture production facility that will have a major impact on the local economy. Read the Star Herald Thursday for that continuing coverage and for all the latest news and sports in Rock County.



Whether buying or selling Today is the day!



502 JAMES, LUVERNE
5 BEDROOM, 3 BATH
\$249,900



NEW LISTING

419 W BROWN, LUVERNE
4+ BEDROOM, 2 BATH
\$119,900



1402 85TH, LUVERNE
2 BEDROOM, 2 BATH
\$89,000



330 SW PARK, LUVERNE
3 BEDROOM, 1 BATH
\$88,500



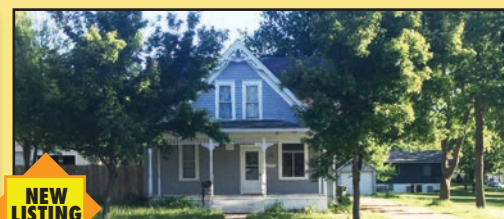
NEW LISTING

715 SW PARK, LUVERNE
4 BEDROOM, 2 BATH
\$109,900



NEW LISTING

407 W WARREN, LUVERNE
2 BEDROOM, 1 BATH
\$82,500



NEW LISTING

108 W BARCK, LUVERNE
4 BEDROOM, 2 BATH
\$60,000



NEW CONSTRUCTION

304 E 6TH, HILLS
2 BEDROOM, 2 BATH
\$249,900

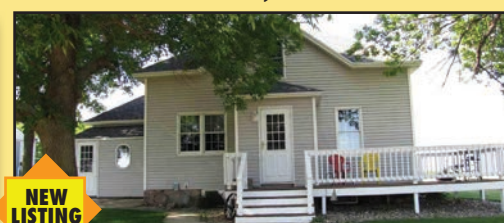


10 LOTS

10 LOTS AVAILABLE IN HILLS
STARTING AT \$10,000

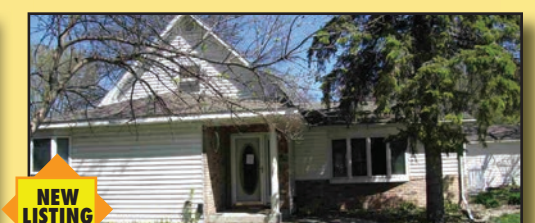


214 CHURCH, STEEN
5 BEDROOM, 2 BATH
\$109,500



NEW LISTING

782 201ST, HARDWICK
3 BEDROOM, 1 BATH
\$189,900



NEW LISTING

116 E 4TH, JASPER
4 BEDROOM, 2 BATH
\$43,700

SALE PENDING

211 W DODGE, LUVERNE
100 W BARCK, LUVERNE
713 W WARREN, LUVERNE
607 W LUVERNE, LUVERNE

Real Estate Retrievers

ALL STATE TEAM
SERVING THE TRI-STATE AREA



Call Real Estate Retrievers selling in the Tri-State Area One yard at a time!

LUVERNE 507-283-4216 | HILLS 507-962-3433

Happy 60th Anniversary
Stanley & Erma Hilbrands
 June 21
 Greetings may be sent to:
 226 Oak Dr.
 Luverne, MN 56156.



Irene Niessink
100th Birthday Card Shower
 June 27

Greetings may be sent to:
 201 Oak Drive #404
 Luverne, MN 56156



The daily news of Rock County Star-Herald.com

Duane J. Mulder Realty
DUANE MULDER AUCTION SERVICE
 Office 507-283-4901

AUCTION SCHEDULE
 Currently Taking Consignments For Our Next Indoor Auction At The Duane Mulder Auction Center, Downtown Beaver Creek, MN. **Yes, we sell cars, pickups, trailers, campers & boats on these auctions.** Call 507-283-4901 Or 507-220-3558 To Get Your Items Consigned To This Auction.

Thursday evening, June 22 – 4:00 P.M. -- Large 2-ring auction at the Duane Mulder Auction Center in down town Beaver Creek, MN

Thursday evening, June 29 – 5:00 P.M. – 14.9 ACRE HOBBY FARM AT AUCTION, along with a large household, tool, shop supplies & acreage items near Luverne, MN. Eldon Bush Estate.

DUANE MULDER – Auctioneer – Real Estate Broker – Certified Agricultural Appraiser. Office Phone 507-283-4901 - Cell Phone 507-220-3558.



PRICED REDUCED

512 E. 4th St., Hills, MN • \$164,900

You won't want to miss out on this beautifully updated home. Starting with the updated kitchen, the main level also features 3 bedrooms, a full bath, as well as a large dining area. The newly finished lower level is complete with a living area, 3/4 bath, and the 4th bedroom. Exterior updates include siding, shingles, windows and doors all replaced in 2012.

Kaylee Van Middendorp
 507-220-1615




Sincerely Yours
welcomes back to Luverne

CRAIG NEISSINK

specializing in men's & women's hair cuts & colors

HOURS:
 Monday 9am-5pm
 Wednesday 9am-5pm
 Thursday 10am-7pm
 Saturday call for hours

Call today to make your appointment!

123 E. Main • Luverne, MN • 507-283-8061



Papik MOTORS
 1-90 Luverne, MN

283-9171 | PAPIK.COM

CHEVROLET GMC CHRYSLER DODGE Jeep RAM

2017 Chevrolet Sonic LT RS
 Stock #123865C



MSRP \$20,495
Wind Sale Price \$14,395

2017 Chevrolet Silverado LT
 Stock #422187C



MSRP \$47,365
Wind Sale Price \$36,374

2017 Chevrolet Traverse LT
 Stock #277392C



MSRP \$43,065
Wind Sale Price \$32,228

2017 Jeep Cherokee Latitude
 Stock #531330J



MSRP \$32,165
Wind Sale Price \$23,165

Cragoe Realty
 Selling Real Estate in the Heart of the PrairieLand.

Your hometown real estate broker for over 22 years
 Gene Cragoe, broker lic. in MN & SD info@cragoe.com
 507-283-2647 or 800-689-2647

We have buyers! WE NEED YOUR LISTING!

LUVERNE'S LOCALLY-OWNED AND OPERATED MLS AGENCY

FOR COMPLETE LISTINGS LOG ONTO WWW.CRAGOE.COM

The first step to successfully selling your home is listing it with us!

114 W LUVERNE, LUVERNE | \$169,900 **OPEN HOUSE**

Saturday, June 24 • 1 - 2:30 p.m.

This is a meticulously well cared for home! The exterior offers a new roof, majority of the windows have been replaced, well maintained lawn, large lot, beautiful flagstone patio, wood deck, 8'2 x 22' storage shed and partially fenced the back yard. The main floor offers a nice kitchen with all of the appliances staying and an eat in area, dining room has beautiful original woodwork and maple hardwood floors, living room has a wood burning fireplace, walk through office area, family room with oak hardwood floors located on the main floor could be converted into an extra bedroom, enclosed front porch and a 3/4 bath with shower. Gorgeous original woodwork staircase leads to the second floor which offers a large master bedroom, two additional nice sized bedrooms and a full bath and a great storage closet. The lower level of this home offers an additional family room with projection TV which stays with the home, another legal bedroom with recessed lighting, laundry room, large storage room and a 3/4 bath with shower. The boiler and water heater have been updated as well as 100 amp circuit breakers. This home is full of updates and offers a lot of living space. A home you do not want to miss out on!



Don't miss a single sale! Read the Announcer online star-herald.com

Find it here!

Here's My Card
 Your Quick & Easy Guide to Area Businesses

Kozlowski
 Insurance Agency & Financial Services, Inc.

Shirley Top
 Sales Representative MN Lic. 27249
 P.O. Box 766 | 212 South Kniss Ave.
 Luverne, MN 56156
 Phone: 507-283-3704
 Toll Free: 1-877-631-3704
 Fax: 507-283-3733
 shirley@kozlowski-insurance.com
 www.kozlowski.com
 For all your insurance & investment needs!



ROCK COUNTY CHIROPRACTIC

• Men, Women & Children's Health
 • Custom Orthotics • Kinesiotape • Athletic Care • Massage Therapy • Work & Auto Injuries • Postural Restoration

DR. MICHAEL SMITH

Most Insurance Accepted

WWW.ROCKCOUNTYCHIROPRACTIC.COM
 283-2561 • 103 E. MAIN, LUVERNE
 Monday 7:30 a.m. - 6 p.m. • Tuesday 7:30 a.m. - 3 p.m.
 Wednesday 7:30 a.m. - 6 p.m. • Thursday 7:30 a.m. - 1 p.m.
 Friday 7:30 a.m. - 5 p.m.

Loosbrock Electrical Construction, LLC

Licensed • Bonded • Insured
 Residential • Commercial • Industrial • Agriculture

Scott Loosbrock
 Owner

507-360-5418 • scott@loosbrockelectric.com
www.loosbrockelectric.com

McClure
 PLUMBING, HEATING, AIR CONDITIONING, INC.
 412 S. Kniss • Luverne, MN • 507-449-2828

Jerry Buss
 Lic. #002732PM

Troy Buss
 Lic. #005573PM

RAIN BIRD **CARRIER**
LENNOX **BRADFORD WHITE**

SD # Luv-MN-R1117-98-1262C
 Licensed, Bonded and Insured in Minnesota and South Dakota

CLEVERINGA CONSTRUCTION
 507-920-5631

• For All Your Building Needs • Additions • New or Remodel
www.cleveringaconstruction.com

Merlin Cleveringa 879 - 100th Ave., Luverne, MN
 507-283-2698 Home Lic. # BC-20552185

Stroeh's Auto Center

We provide complete auto care for any make or model vehicle, from oil changes to engine repairs

Alan Stroeh • 321 E Main St. • Luverne • 283-4226
www.stroehsauto.com

Preston Power

Preston Neese 507-227-9156
 Owner PO Box 151
hjprestonpower@gmail.com Magnolia, MN 56158
 small engine repair * snowblowers - all makes & models

ROCK MOTORSPORTS

MOTORSPORTS AND POWER EQUIPMENT
 PARTS - SERVICE
 507-449-4386

Bill Aanenson - Owner
 621 S Kniss Ave Luverne, MN 56156

Rock County EYE CLINIC

Dr. Sandra Carman

507-283-2345

102 N. Freeman Ave., Luverne, Minnesota

FRANKEN CONSTRUCTION

Travis Franken, Lic #20627458 & Insured
 1332 181st St., Luverne

507-920-8253

Call today for a FREE ESTIMATE.

REMODELING • NEW ADDITIONS • SIDING
 DECKING • WINDOW/DOOR REPLACEMENT
 GARAGE DOORS • CONCRETE
 NO JOB IS TOO SMALL!!!

Tree & Stump Removal

FREE ESTIMATES

Traci Davis 605-759-7880
Mike Davis 507-227-7068



New Construction - Home Additions - Interior & Exterior
 Home Remodeling - Windows - Siding - Drywall -
 Foundation Work & Walls - Sidewalks & Driveways

Oehlerts & Son Construction
 30 Years Experience

Kevin Oehlerts, Luverne,
www.OehlertsAndSonConstruction.com
 507-673-2206
 Lic. # BC064924

LUVERNE HEALTH & WELLNESS
 Codie Zeutenhorst, D.C., CAC

Acupuncture • Chiropractic Care
 Family Care • Sports Injuries
 Kinesiotape • Auto & Work Injuries

Acupuncture and Massage Available
 Kris Van Der Brink M.T. & Amy Rosales M.T.

507.449.4400 www.luvernechiro.com
 109 S. Freeman Ave. | Luverne, MN





•Ready built homes •Andersen windows •Cabinets
 •Siding •Doors •Quality lumber at great prices (compare)
 •All Homes are state inspected to meet requirements
 •Custom Blueprinting •Delivery Available
 •No need to wait in lines

Call Randy or Harlan about your plans

507-442-4821 • Box 247 • Leota, MN

WEATHER ALERT! Are you covered?
 NOW is the TIME to get HAIL INSURANCE for your CROPS

Give us a call to update HAIL COVERAGE FOR 2017!




South Hwy. 75,
 Luverne, MN
 507-283-8383
 1-800-258-4471
 info@cattnach.com
 www.cattnach.com

Auto •Farm/Home •Crop/Hail•Commercial •Investments •Long Term Care •Life/Health •Disability

ALWAYS FREE ESTIMATES!

We provide FULL EXCAVATION SERVICES



DD GRAVEL 611 4TH STREET NE, PIPESTONE, MN 56164 **507-825-5552**

ATTENTION ADVERTISERS!

If you would like to be featured in our publication for Luverne's 150th anniversary, please contact Rick or Chantel NOW!
 507-283-2333 or sales@star-herald.com

YOU DON'T WANT TO MISS OUT ON THIS ONCE IN A LIFETIME OPPORTUNITY!

advertising deadline is June 21



LUVERNE

LARGE EVENING AUCTION IN BEAVER CREEK, MN
THURSDAY EVENING, JUNE 22 -- SALE TIME 4:00 P.M.
 LUNCH SERVED BY THE COUNTRYSIDE INN
VERY LARGE DOUBLE RING AUCTION -- VERY PARTIAL LISTING

AUCTIONEERS NOTE: This is a very large auction. Inside ring starts with table items at 4:00 P.M. & outside ring starts with yard, garden & misc. items at 4:00 P.M. We will be selling for Dave & Jane Heitkamp, Adrian, MN, Denny Gyberg Estate, Luverne, MN, several complete households, plus numerous consignments. Space will not allow us to advertise all the items on this auction. We have a facility with lunch counter, chair seating & rest rooms.

HOUSEHOLD APPLIANCES: tan electric Frigidaire kitchen range; GE washer (white); Maytag electric dryer (white); Maytag washer (tan); sewing machine in cabinet; Necchi sewing machine in cabinet; small window air conditioner (110 volt); Bissell vacuum; electric heaters.

HOUSEHOLD FURNITURE: light tan leather couch with double recliner; light moss green leather couch with double recliner; light tan recliner; oak high dresser with mirror & shelves; Heritage armoire with mirror front; glider rocker with foot rest; video cabinet; sewing machine in cabinet; wood bar chair; china hutch; wood base cabinet; wing back chair; brown recliner; sage green recliner; coffee table; several kitchen tables with chairs; office chair; corner stand with shelves; wood folding table; large wood display stand; large computer desk; small drop leaf chrome table; wood shoe rack; 3-drawer metal file cabinet; wood high chair; chest of drawers; plant stands.

ANTIQUE & COLLECTIBLE FURNITURE: oak roll top desk; waterfall chest of drawers; vanity dresser with mirror; wood doll high chair; 2 wood child's folding chairs; more collectible furniture coming in.

TABLE ITEMS: approximately 30 double tables of misc. items with a mixture of antique & collectible items.

MISC. HOUSEHOLD ITEMS: bread maker; 4-slice toaster; crock pots; George Foreman grill; hand mixer; stemware, cook books; large wood cutting board; silverware; pots & pans; punch bowl with cups; misc. glassware; 10-piece kitchen knife set; flour sifter; scatter rugs; afghans; blankets; boom box radio; floor fans, oscillating fans, ceiling fans; mini size TV; table & floor lamps; canners; luggage; much more misc. household items too numerous to mention.

ANTIQUE & COLLECTIBLE ITEMS: 8" cast iron chicken fry pan; cast iron fry pans; cast iron bacon press; assortment of cookie jars; oatmeal tin; colander on stand; Case threshing machine manual; John Deere No. 490 corn planter manual; John Deere 227 corn picker manual; manual typewriter; Mad comic books; dog treat cookie jar; cigar boxes; May 1930 Cosmopolitan book; meat curing & sausage making magazine; Blue Halls water pitcher; ammo boxes; hand crank popcorn popper; small metal air plane; gas lantern; Ty beanie babies; large assortment of dolls; comic books; 78 & 33 rpm record albums; camel back trunk; precious moment figurines; coaster wagons; Radio Flyer coaster wagon; tricycle.

GUN & SPORTSMAN ITEMS: Springfield Model 67F, 12 pump gauge shotgun; 2 metal cabinets 80" tall, 18" wide & 22" deep with paddle locks used for gun cabinets; poly gun case; landing net; fishing rods & reels; landing net; rechargeable battery cutting knife; coolers; aluminum baseball bat & mitts; golf clubs & golf balls; coolers;

HEALTH & EXERCISE ITEMS: exercise machine; walker with wheels;

SPEAKER SYSTEM & SAFE: Harman/Kardon, Model H/595 speaker system; large safe with combination;

LAWN, YARD & GARDEN ITEMS: Poulan 38" cut riding mower (very nice); Yard Machine self-propelled 22" snow blower with snow protection canopy; Craftsman "Easy Walk" self-propelled push mower with grass collector; Weed Eater gas powered feather lite weed eater; Remington gas powered weed eater; electric pole saw tree trimmer; Stihl gas powered leaf blower; Toro push mower with bagger; charcoal grill; hand sprayer; garden tools; goose lawn ornaments; large wood martin house; water hose reel with water hose; electric hedge trimmer; electric leaf blower; folding lawn chairs & chase lounge; patio table; propane tank.


SHOP ITEMS: Craftsman 12" "motorized" table saw; Royal radial arm saw; bench mount drill press; portable air compressor; drop cords; electric hand saws, drills, saber saws, small shop vacuum, large & small bench vises; tool boxes with hand tools.

CONSTRUCTION ITEMS: 2 older transits; assortment of siding and misc. construction items.

MISC. ITEMS: transfer pump with Honda gas engine; L.B. White propane heater; sump pumps; lawn Christmas decorations; 29" animated Santa; 6' poly step ladder; aluminum extension ladder; farm tools; 30" x 80" aluminum storm door; 6' aluminum step ladder; trash cans; gas cans; set of poly saw horses.

TERMS: Complete settlement immediately after the auction. No guarantees. Not responsible for accidents or theft of items purchased. Computerized driver's license machine in use. All buyers are required to provide clerks with identity information.

www.midwestauction.com-Duane Mulder Auction & Realty
 SALE ARRANGED & CONDUCTED BY:
DUANE MULDER AUCTION SERVICE
 DUANE MULDER -- E-MAIL: duanejmulder@gmail.com
 REAL ESTATE BROKER (MN, IA, SD) -- CERTIFIED AGRICULTURAL APPRAISER
 1470 COUNTY HWY 4, LUVERNE, MN -- OFFICE PHONE 507-283-4901



DUANE MULDER, AUCTIONEER (67-44), LUVERNE, MN -- 507-220-3558
 JIM VON HOLTUM, AUCTIONEER (53-10), LISMORE, MN -- 507-220-3556
 RANDY BUNTJER, AUCTIONEER (53-18, ELLSWORTH, MN -- 507-360-2650
 J.J. VON HOLTUM, AUCTIONEER (67-80), LUVERNE, MN -- 507 227 - 8029

LOCATION – LOCATION – LOCATION


PRIME 14.9 ACRE HOBBY FARM LOCATED NEAR, LUVERNE, MN AT AUCTION

In order to settle the estate of Eldon Bush, the following real estate and personal Property will be offered at Public Auction located from the junction Hwy 75 & County Hwy 4, 1 & ½ miles north on Hwy 75 and approx. 1 mile west on 131st Street to acreage 1183.

THURSDAY EVENING, JUNE 29 – SALE TIME 5:00 P.M.
 LUNCH SERVED BY THE COUNTRYSIDE INN

AUCTIONEERS NOTE: This auction offers a choice opportunity to purchase an acreage or hobby farm with an excellent location on a hard surface road, the enjoyment of country living, and only minutes away from medical care. If you are in the market for this type of property, plan to attend our open house showings and be in attendance at the auction.

DESCRIPTION OF THE PROPERTY: The main floor of the home has a small entry room to the east with a linoleum floor and a clothing wardrobe. The kitchen has built in cabinets with a pleasant view to the north and east, a TV room with closet/pantry, a large dining room with a small entry room to the south and office to the east. The second floor of the home has 3 bedrooms with closets & bath room with tub, sink & stool. The third level of the home has an attic with steps. The basement of the home has a shower, sink, stool, washer & dryer hook-up. There is also a work bench in a portion of the basement. The home is serviced by an underground heating & cooling unit for very minimal heating & cooling cost. The home has a recent new steel roof. The out buildings consist of a 24' x 54' four-stall garage with partial cement floor, a 34' x 52' hip roof barn with hay mow and set up with horse stalls, a 24' x 48' cement block storage building with cement floor, a recent new steel roof and cement draper to the east, a 26' x 32' storage building with a dirt floor, steel sides and recent new steel roof. This acreage is located in a pleasant setting with large shade trees and evergreens through out the lawn, and protected with a thick tree wind break to the west and north. The property is serviced by a well located in the field on the southeast corner of the property. The property has 8.48 acres of tillable farm land that is leased for the 2017 cropping season. The property will be sold with the understanding that the current farm operator will reserve the right to enter the property to harvest the 2017 soybean crop. Crop land possession will be given to the new owner immediately after the soybean crop is harvested.



OPEN HOUSE SHOWING DATES: Open house showings of the property will be held on Wednesday evenings June 14 & 21 between the hours of 5:30 P.M. & 7:00 P.M., or by contacting any of the Auctioneers listed below.

LEGAL DESCRIPTION: 14.9 acres located in the Southeast ¼ of the southeast 1/4, Section 33, Mound Township, Rock County, Minnesota.

TAXES & ASSESSMENTS: Homestead taxes & assessments due & payable in 2017 are currently listed as \$396. at the Rock County Court House. The taxes & assessments due & payable in 2017 will be prorated to the date of possession.

TERMS: A 10% non-refundable down payment immediately after the auction. Buyer will be required to sign a purchase agreement immediately after the auction. Balance due & payable on or before August 1, 2017, when a Deed & updated Abstract of Title will be conveyed to the buyer. Sale sold subject to confirmation of the sellers. Real estate licenses represent the sellers in this transaction. The current septic system is "in use" and any septic system update will be the sole responsibility of the buyer. This property is sold "as is". Any announcements made at the auction take precedence over any & all advertising pertaining to this auction.

PERSONAL PROPERTY – APPROXIMATELY 5:30 P.M.

AUCTIONEER'S NOTE: We will be running 2 auction rings. Ring No.1 will start selling household items, and Ring No. 2 will be selling tools and farm related items immediately after the real estate auction.

HOUSEHOLD APPLIANCES: Kenmore smooth top electric kitchen range (white); Frigidaire refrigerator (white); Panasonic microwave (white) Kenmore electric dryer; Kenmore washer; Kenmore sewing machine in cabinet; GE old style refrigerator; Coop thick wall chest freezer; large flat screen 42" TV; Bissell carpet cleaner; floor fan; Shark steam pocket mop; fabric steamer; 2 Lasko electric heaters.

HOUSEHOLD FURNITURE: dining room table with 8 chairs; kitchen table with 4 roller chairs; drop leaf table with 4 chairs; chests of drawers; (2) 3-piece bedroom sets; double bed; china hutch; large sofa (S.W. design); brown sofa; writing desk; glider rocker; rockers; end tables; night stand; microwave stand; CD cabinet with videos; wood table; wood chairs; book shelf; telephone table; round wood side table.

ANTIQUE & COLLECTIBLE FURNITURE: 3 cedar chests; commode dresser; hall table; camel back trunk.

MISC. HOUSEHOLD ITEMS: Bunn coffee pot; electric knife; toaster; crock pot; electric hand mixer; baking pans; silverware; Apple tea kettle; kitchen utensils; Tupperware; pots; pans; large blue roaster; bread bowl; corn kettle; cutting boards; wicker picnic basket; lap trays; ice bucket; scatter rugs; dish towel; bath towels; table clothes; doilies; blankets; quilts; bed pillows; sheets; stuffed animals; pictures; books; Terry Redlin battery wall clock; table & floor lamps; figurines; canner; floor fan; sewing basket; luggage; board games; alarm clock; small safe with combination; overnight cases; bowling ball in case with shoes; numerous other misc. household items.

GLASSWARE: 8-place set of Japan china; stemware wine glasses; sherbets; Corella casseroles; Pyrex; carnival glass sugar bowl; pink depression vase.

ANTIQUE & COLLECTIBLE ITEMS: Watts ware bowl (Hull Creamery, Hull, IA); 1989 Rock County Atlas; set of wall display long horn steer horns; Roseville planter; hand beater in glass jar; Apple cookie jar; men's & women's wrist watches; belt buckles; one gallon crock; hand crank popcorn popper; jewelry boxes; jewelry; bolo ties; Tonka toys; Bulova mantle clock.

HEALTH RELATED ITEMS: portable commode chair; wheel chair; exercise rower.

SPORTING ITEMS: tackle boxes with fishing tackle (some collectible); fishing rods & reels; Daisy BB gun; rifle cleaning rod; camp stove; arrows; rocket toss lawn game.

YARD & GARDEN ITEMS: Troy Bilt 7-speed, 42" cut rider mower; Yard Machine 15 hp, 42" cut rider mower; Homelite weed eater; electric Remington chain saw; Homelite chain saw; 10 cu. ft. 2-wheel lawn trailer; electric leaf blower; poly lawn chairs; metal patio chairs; weber grill, gas grill; wheel barrel; ATV sprayer; log splitter with gas engine.

TOOLS & SHOP ITEMS: work bench with small vise; table saw; large assortment of hand tools; riveter; soldering gun; work mate work bench; heat gun; angle grinder; 5 gallon pail with tool apron; Craftsman router; multi grip clamp; socket sets; clamps; nails; shop vacuum; tool boxes; shop step chair; Armor all car cleaning kit; floor jack; portable air compressor; creeper; Huffy collectible oil dispenser; upright tool caddy on rollers; impact wrenches; air conditioner gauges & refrigerant filter wrenches; collectible Motor Craft parts cabinet (45" tall, 33" wide & 18" deep); jack stands; car repair manual; squirrel cage fan; chop saw; bench grinder; electric hand saw; battery charger; bench vise.

CARS & PICKUPS: 1995 Oldsmobile "98" 4-door car with 154,464 miles (white); 1994 Oldsmobile "98" 4-door car (white); 1988 Dodge "Dakota" with 127,210 miles, 4 speed transmission and snow blade (sold as a unit).

TRACTORS, SKID LOADER & FARM MACHINERY: Farmall "M" tractor with trip bucket loader, 3-point adaptor kit & recent new rear tires; Ford "8N" tractor with recent new rear tires and overdrive; Bobcat No. 371 skid loader with fork bucket & material bucket; 3-point blade; 7' mounted sickle mower; 3-point rotary mower; drag section; 2 bottom mounted plow.

FARM RELATED ITEMS: bushel baskets; 2-wheel cart; forks; scoops, shovels; step ladders; aluminum extension ladders; Goldenrod fence stretcher; plastic baler twine; 9 steel livestock gates; wood posts; assortment of farm tools.

HORSE RELATED ITEMS: 2 western saddles; bridles; halters; horse show trophies; western hats; Appaloosa News Magazines dating back to 1961.

MISC. ITEMS: Christmas decorations; luggage; new wood shelving to be assembled; split fire wood; 5' wood step ladder; Cobra walke talkies; metal base cabinet; electric motors; trash cans; fire barrel.

TERMS: Complete settlement immediately after the auction. No guarantees. Not responsible for accidents or theft of items purchased. Computerized driver's license machine in use. All buyers are required to provide clerks with identity information.

ELDON BUSH ESTATE
 DONALD R. KLOSTERBUER, LUVERNE, MN, ATTORNEY FOR THE ESTATE

FOR PICTURES GO TO
midwestauctions.com/mulder or randybuntjerauctionandrealtyllc

SALE ARRANGED & CONDUCTED BY:
DUANE MULDER AUCTION SERVICE
 DUANE MULDER -- E-MAIL: duanejmulder@gmail.com
 REAL ESTATE BROKER (MN, IA, SD) -- CERTIFIED AGRICULTURAL APPRAISER
 1470 COUNTY HWY 4, LUVERNE, MN -- OFFICE PHONE 507-283-4901



DUANE MULDER, AUCTIONEER (67-44), LUVERNE, MN -- 507-220-3558
 JIM VON HOLTUM, AUCTIONEER (53-10), LISMORE, MN -- 507-220-3556
 RANDY BUNTJER, AUCTIONEER (53-18, ELLSWORTH, MN -- 507-360-2650
 J.J. VON HOLTUM, AUCTIONEER (67-80), LUVERNE, MN -- 507 227 - 8029

Dining & Entertainment



Papa's Place

DAILY SPECIALS

must purchase drink with special

	LUNCH starting at 11am	DINNER starting at 5pm
Monday	chef's choice	bogo burger
Tuesday	chef's choice	senior day -15% off
Wednesday	chef's choice hot bar	12oz sirloin \$9.99 soup or side salad & potato
Thursday	chili cheese bar burgers/hot dogs & fries	8oz boneless pork chop \$9.99 soup or side salad & potato
Friday	hot bar w/goulash, tater tot hotdish & meatloaf	all appetizers 1/2 price
Saturday	chef's choice	prime rib
Sunday	hot bar buffet @10:30am CFS & eggs before 11am	all you can eat steak tips

PAPA'S PLACE • 920 S KNISS, LUVERNE • 283-4458

PRESENTED AT THE
PIPESTONE PERFORMING ARTS CENTER

RODGERS & HAMMERSTEIN'S
CINDERELLA

MUSIC BY RICHARD RODGERS BOOK & LYRICS BY OSCAR HAMMERSTEIN II

EVENING SHOWS ON
JUNE 15, 16, 17, 22, 23 & 24 AT 7:30 P.M.

SUNDAY MATINEES ON
JUNE 18 & 25 AT 2:00 P.M.

TICKET PRICES • ADULTS \$15 • STUDENTS: \$7

CALL THE PIPESTONE COUNTY MUSEUM BOX OFFICE
FOR RESERVED SEATING AT 507-825-2020

United Way | SIOUX VALLEY ENERGY | Fishback Financial Corporation | LAND & LEGACY

This activity is funded, in part, by a grant from the Southwest Minnesota Arts Council through an appropriation from the MN State Legislature with money from the State's general fund.

ST. CATHERINE'S CHURCH

SALAD LUNCHEON!

Thursday, June 22
11:00 a.m. - 1:00 p.m.

St. Catherine's Parish Hall 203 E. Brown St.

Come and enjoy a variety of salads and hot dishes.
'Take-outs' available

Adults \$6 • Students \$3 • Kids 5 & under FREE

Hats Off to the

HINKLY HOUSE

JOIN US
TUESDAY, JUNE 20 • 7PM

and travel through time with our beautiful collection of hats, bonnets and fascinators from the turn of the century through the 1970s.

Help preserve the Hinkly House and enjoy a historic evening.
Refreshments served and free will donations welcomed!

Open Thursdays - 2 to 4 pm
June, July, August

Also Open by Appointment:
Call 507.283.4061

Hinkly House, 217 N. Freeman Ave., Luverne, MN

KIDS ROCK SPORTS CAMP

sponsored by Living Rock Church
Luverne, MN | June 19-23 | 6:30-8:30pm

Completed K-5th Grade
registration \$10 / \$30 family maximum
sign up at: www.livingrockswmn.org/sportscamp
or call 507-449-0057

Join us for skills in soccer, basketball, football, track & field and cheerleading at the Luverne City Park

There will be Bible study, give-aways, t-shirts and of course loads of fun for participants!!!

Friday night will feature food, awards & games!

www.livingrockswmn.org

UP THE DAM CREEK

POKER RUN

All vehicles welcome
SATURDAY, JUNE 24
\$10 entry fee • Sign in 10-11am
Leaving at 11am

Bean Bag Tournament
FUNDRAISER 2pm

\$10 entry fee • Larchwood style
Free food • Drawings throughout the day
• 50/50 & Silent Auction

Downtown Beaver Creek • 507-204-7740
3-7 Mon-Thurs • 10am - 1am Fri & Sat

FREE events at Touch the Sky Prairie

FRIDAY, JUNE 23
LIVE MUSIC 7:30 PM
GUITARIST & VOCALIST JIM GROTH

SATURDAY, JUNE 24
YOGA & MASSAGE 7:30 AM
KRISTI FRANKEN & MARTHA NOWATZKI

Rain location - Carnegie Cultural Center

ADDITIONAL INFORMATION
WWW.LUVERNECHAMBER.COM OR CALL 507.283.4061

ON 171ST STREET - 3 MILES WEST & 2 MILES NORTH
OF BLUE MOUNDS STATE PARK ENTRANCE

150th Rock River Water Trip

JUNE 24, 2017

REGISTER NOW!

FIRST COME, FIRST SERVE

Trip includes transportation, breakfast snack & lunch on the river!

*15 person with your own canoe or kayak
*30 person if we provide canoe or kayak
Payment required with registration!
ALL PARTICIPANTS REQUIRED TO WEAR SHOES AND LIFE JACKET

REGISTRATION MATERIALS AVAILABLE:
www.luvernechamber.com | 213 East Luverne Street - Luverne 56156 | 507.283.4061 | Email: luvernechamber@co.rock.mn.us

BE PART OF THE 150 PEOPLE ON THE ROCK RIVER CELEBRATING LUVERNE'S 150TH BIRTHDAY!

EVENT SPONSORS:
Buffalo Ridge Insurance | Jaycox Implement, Inc. | Luverne Body Shop | ReMax Realty - Luverne
Connell Car Care | Luverne Area Chamber & CVB | Luverne Trolley | Mike Davis Tree Trimming
Grand Prairie Events

WATERTOWER SALE!!

HURRY IN! JUNE BONUS TAG PRICING!

NEW & USED CARS SALE!

'17 CHEVY SILVERADO 1500 4X4
#77015 Crew Cab, Siren Red Clearcoat, Trailer Brake Controller, Heated Seats, Block Heater, All Star Edition
MSRP \$48,080 • Total Discount \$8,174!

SALE PRICE: \$39,906

'17 CHEVY SONIC LT AUTOMATIC
#47010
MSRP \$19,045 • Total Discount \$3,809!

SALE PRICE: \$15,236

'17 CHEVY SILVERADO LT 1500 4X4
#77044 Crew Cab, Black, Trailer Brake Controller, Heated Seats, All Star Edition
MSRP \$47,675 • Total Discount \$8,105!

SALE PRICE: \$39,570

'17 CHEVY SILVERADO 1500 4X4
#77038 Crew Cab, LT, Chrome Asst. Steps
MSRP \$47,330 • Total Discount \$8,046!

SALE PRICE: \$39,284

'17 CHEVY CORVETTE STINGRAY COUPE
#67048 Dark Slate Metallic, SLT Crew Cab, Premium Plus Package, All Terrain Tires, Z71 Off Road Suspension Package
MSRP \$69,910 • Total Discount \$6,991!

SALE PRICE: \$62,919

'17 BUICK LACROSSE ESSENCE
#27026 Driver Confidence Package, Popcornstreat Metallic, Sun & Shade Package, Sights & Sounds Package
MSRP \$43,125 • Total Discount \$7,331!

SALE PRICE: \$35,794

'17 BUICK LACROSSE ESSENCE
#27028 Driver's Confidence Package, Crimson Red Tintcoat, Sights & Sounds Package
MSRP \$41,675 • Total Discount \$7,086!

SALE PRICE: \$34,589

'17 GMC SIERRA 4X4 CREW CAB SIT
#57074 Stone Blue Metallic, SLT Crew Cab, Premium Plus Package, All Terrain Tires, Z71 Off Road Suspension Package
MSRP \$55,545 • Total Discount \$7,840!

SALE PRICE: \$47,705

'17 GMC SIERRA 1500 CREW CAB SIT
#67048 Dark Slate Metallic, SLT Crew Cab, Premium Plus Package, All Terrain Tires, Z71 Off Road Suspension Package
MSRP \$55,345 • Total Discount \$7,827!

SALE PRICE: \$47,518

'17 BUICK ENCLAVE AWD
#27020 Premium Group, Crimson Red Clearcoat, Experience Buick Package, Dual Roof
MSRP \$53,140 • Total Discount \$6,195!

SALE PRICE: \$46,945

'17 BUICK ENVISION AWD PREMIUM II
#27014 Panoramic Sunroof, Galaxy Silver Metallic
MSRP \$47,775 • Total Discount \$5,828!

SALE PRICE: \$41,947

'17 BUICK ENCORE PREFERRED
#47035 Quicksilver Metallic
MSRP \$25,685 • Total Discount \$3,000!

SALE PRICE: \$22,685

SEE COMPLETE INVENTORY & Apply Online for Pre-Approved Financing @ amdahlmotors.com

SEE COMPLETE INVENTORY & Apply Online for Pre-Approved Financing @ amdahlmotors.com

Amdahl Motors | **WWW.AMDAHLMOTORS.COM**

CONTACT US @ 1-800-658-2327 | HOURS: Monday through Friday 9am to 5:30pm, Saturday 9am to 4pm, July 1st 9am to 3pm & 23rd Pipestone, MN, (507) 858-3327 or 1-800-658-2327

Visit us online! Star-Herald.com

the classifieds

To place a classified ad in the Luverne Announcer, call 283-2333, stop by our office at 117 W. Main, Luverne, or visit www.star-herald.com.

RENTALS

One-bedroom apartment in Luverne. Stove and refrigerator furnished with off the street parking. No pets or smoking. \$450 per month, utilities included. Security deposit and minimum six month lease required. Text or Call 605-370-2251, references required and verified. (6.15-7.2)

AGRICULTURAL

WE HAVE SEVERAL CREWS OF BEAN WALKERS. We also pick rock, put up and take down fences. We will do any type of farm work. Call 712-943-2084, 712-251-3277 or 712-899-5219. (4.27-9.20)

WINDOWS

We custom build and install Energy Star Therm-O-Loc Windows. Call Mike at Adrian Glass for a free in-home demonstration and estimate. 101 E. Pearl, Adrian, MN 56110. 507-483-2228 or 605-770-7677 or email mbyler@santel.net (tc)

MOVING SALES

Moving Sale: 966 41st Street Steen, MN. June 22, 9 a.m.-7p.m., June 23, 8 a.m.- 5 p.m., June 24, 8 a.m. - 12 p.m. Swimming pools (16x48) or (13x33), seasonal, household, toys, bikes, garden tools, children's books, custom made oak desk, teaching stuff, etc. Everything must go! (6.18-6.22)

GARAGE SALES

House Rummage Sale: 407 W. Warren. Saturday June 24 8 a.m. - 2 p.m. All merchandise is in the house. Walk in the front door. Anything is for sale. Glider rocker, storage cupboard, tv stand, accent chair, end tables, four solid oak accent tables, hutch, table and chairs, two full size beds with bedding, five-drawer dresser, microwave, misc. wall and kitchen decor and more. (6.18-6.22)

Garage Sale

1010 N. Spring Street. Thursday June 15, Friday June 16 and Saturday June 17. 8a.m.-5p.m. daily. Clothes, vintage glass, porcelain, toys, cosmetic jewelry and more. (6.15-6.18)

SERVICES

DD Backhoe Service
Doug Dooyema
 Hydrants, waterline repairs, tile line repairs, small tile jobs, and hole digging
 Call 507-283-8357 or Cell 507-220-8218

Hamann Repair
 Repairing all makes of tractors, skid loaders, combines and small engines.
 For all your parts needs call 507-935-5422
 Over 30 years experience
David Hamann, Luverne
 Open Mon.-Fri. 8 a.m. to 5 p.m.
 Phone 507-935-5422
 Cell 507-920-7119

Tree Tech Inc.
 Luverne, MN
 507-283-8552
 507-920-6424 cell
 tree removal
 tree trimming
 stump grinding
 tree moving

BLUE MOUND TOWER
 Luverne HRA - Blue Mound Tower
 216 McKenzie Street
 Luverne, MN 56156
 507-283-4922
 1 bedroom apartments available!
 •All Ages Welcome
 •Pet Friendly
 •Smoke Free
 •Close to Minnesota West College
 •Income Based
 •Handicap Accessible
 •On Site Laundry
 •Utilities included

EMPLOYMENT

Client Community Services, Inc., Worthington, Minnesota, has an immediate opening for a Residential Supervisor at our home located at 106 E. Christensen Drive in Luverne, Minnesota. The Supervisor will oversee the residential program to provide supported living services for 4 adult females with disabilities. The supervisor will supervise and schedule direct care staff, oversee implementation of consumer program goals, support and evaluate services, manage budgeted finances and ensure compliance with relevant rules governing the program. Preferred applicants will have: 1. Four year degree in a field related to service provision and one year work experience with consumers with developmental disabilities or related conditions preferred, OR 2. A two year degree in a field related to service provisions, and two years of work experience with consumers with developmental disabilities or related conditions, OR 3. A certificate of competence from accredited post-secondary program in the area of developmental disabilities and two years' work experience. 4. Any variance from these education/experience criteria requires approval by CCSI Executive Director and the Waivered Services Program Director. Benefits include health, life and dental insurance and optical insurance, PTO, 403(b) retirement plan. (6.18-7.6)

Southwestern Youth Services in Magnolia, MN is hiring Day/Evening Youth Supervisors to work with male juveniles in a residential setting. Part time, and/or Full-time, \$11.50-\$12.00/hr (or based on education), benefits, pd. holidays. Must be 21 yrs old and have high school diploma. Send application or resume to PO Box 40 Magnolia, MN 56158 or stop by for an application. For further information contact Don or Jeremy at 507-283-4425. (6.18-7.6)

Driver needed for local grain hauling. Must be 21 and have a CDL. Call Jon at Jon Finke Trucking for more information. 507-290-1500. (6.11-7.6)

Help Wanted: morning, evening and weekend milking shifts available. Call 507-348-4850. (6.4-6.22)

Papa's Place is hiring servers and cooks. We are also hiring a bookkeeper. Must be knowledgeable in quickbooks. Job includes doing payroll and more. Send resume to 920 S. Kniss, Luverne, MN 56156 (6.1-6.18)

Parkview Manor is hiring both full and part-time CNAs for all shifts (including nights)! Benefits include health insurance, vacation, PERA retirement plan, holiday pay, and a \$2,000 scholarship available for students! We will provide training or pay for experience. Wages are based on experience level. If interested, contact Darnell Krull at (507) 967-2388 or Sam Quam at (507) 967-2482. (tc)

Parkview Manor is looking for a part-time LPN/RN! Benefits include vacation, PERA retirement plan, and holiday pay! Wages are based on experience level. If interested, contact Darnell Krull at (507) 967-2388 or Sam Quam at (507) 967-2482. (tc)

New Prairie Insulation of Beaver Creek has a full-time Insulation Installer position available. Monday through Friday, health insurance, vacation, holiday, bonus opportunities. Will train. Call Dean at 605-376-3006 or 507-673-2548. (tc)

EMPLOYMENT

HELP WANTED: BOILER OPERATOR
 Agri-Energy is seeking a hard working individual with a good work ethic to fill the position of **Boiler Operator**. A 1st Class B license is required. Please send resume and cover letter to:
AGRI-ENERGY
 502 S. WALNUT AVE.
 LUVERNE, MN 56156
 Or email to: mstanley@gevo.com
 

Minnesota Veterans Home of Luverne
YOU'RE INVITED
JOB FAIR
NURSING ASSISTANTS & LPNS
JUNE 29, 2017
 10:00 am—12:00 pm & 2:00 pm—4:00 pm
 REFRESHMENTS WILL BE PROVIDED
 Please join us to learn more about employment opportunities at our facility.
 Not certified? Training available for eligible applicants.
 Unable to attend? Contact Human Resources 507-283-6211
 1300 N Kniss Ave | Luverne MN 56156

HELP WANTED
Service Advisor/Warranty Administrator
 DeBoer Chevrolet Co. is looking for an energetic person to become part of our service team. If you are a self-starter and able to multitask, we want to hear from you. This position is fulltime, Monday-Friday from 8 a.m. to 5 p.m. Automotive experience a plus, but not necessary. Competitive wage, vacation and benefits.
Contact Brian or Stewart at 507-442-4341
 or email resume to info@deboerchev.com
 

Goldh Plump
 We are currently seeking candidates to join our production team at our Luverne, MN Location.
PRODUCTION ASSOCIATE
 Aft Shift -3:45pm start, \$14/hr
 Day Shift-7:00am start, \$13/hr

\$1,000 HIRING BONUS
 Applications are available at the plant

Pilgrim's Home of **Goldh Plump** **BARE Chicken**
 1174 CO HWY 4 LUVERNE, MN 56156
 Must be at least 18 years old
 Equal Opportunity Employer

Your Calling. YOUR PLACE.
Sanford Health
 Passionate about health care? Join our growing team.

Sanford Luverne Medical Center
FT (Full-Time), PT (Part-Time), PRN (Part-Time as Needed) Positions Available:
 Certified Medical Assistant— **PT, PRN**
 Emergency Medical Technician — **PRN**
 Environmental Service Technician — **PT, PRN**
 Home Health Aide— **PT, PRN**
 LPN, Ambulatory — **FT, PRN**
 LPN, Hospice — **PT, PRN**
 Medical Assistant, Ambulatory — **FT**
 Paramedic — **FT, PRN**
 RN, Inpatient — **FT, PRN**
 To apply, visit sanfordhealth.jobs
 Search Luverne in the location search bar
 1-877-243-1372 AA/EOE

EMPLOYMENT

Rock County 4-H is seeking a **4-H Foodstand Manager** to work during the Rock County Fair from July 26 to 29 in Luverne. Qualified candidates should be willing to work with volunteers and food service experience is preferred. **Contact Rock County 4-H Program Coordinator, Chelsey Asche at 507-283-1302 or email john13978@umn.edu for a position description and compensation details.**

EMPLOYMENT

WE ARE HIRING
Job opening for a full-time CSR/Insurance Rater
 • Experience Preferred
 • Competitive Salary & Benefits
 Send resume to:
 P.O. Box 425, Pipestone, MN 56164
 Attn: Shelly
 Or email:
shelly@kozlowski-insurance.com

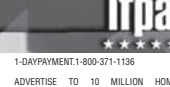
 401 8th Ave. SE • Pipestone, MN (507) 825-3366
 Offices in Pipestone & Luverne
 www.kozlowski-insurance.com
 86326

Get exercise and get PAID at the same time!
WE HAVE IMMEDIATE JOB OPENINGS

EARN EXTRA CASH BY DELIVERING THE ANNOUNCER
 Luverne Announcer carriers needed for **LUVERNE**
 Call 283-2333 or stop in at the Announcer Office. (Ask for Jenn)
 117 W. Main Street, Luverne

HILLS-BEAVER CREEK
 Hills-Beaver Creek School District
 301 N. Summit Avenue - PO Box 547
 Hills, Minnesota 56138
 Website: www.hbc Patriots.com
 Email: t.holthaus@isd671.net
 Telephone: (507) 962-3240 Ext. 13

Head Volleyball Coach
2017-2018 School Year
Position: Varsity Head Volleyball Coach
Qualifications: MN State High School Head Coach Certification or ability to obtain.
 The Hills-Beaver Creek School district is located in the far Southwest corner of the state of Minnesota. The district lies just 20 miles east of Sioux Falls, South Dakota. We are a tiny (growing) family orientated school district with a strong desire to assist our students in their learning. Open until filled.
 Develop and manage the Hills-Beaver volleyball program. Must manage program and coordinate practice times, player development (all levels) and game management. Individual must work closely with the Activities Director to establish a consistent volleyball program for the benefit of H-BC Volleyball Players. Positive, impactful, positive leadership skills.
Apply To: Todd Holthaus, Superintendent, Hills-Beaver Creek Schools, PO Box 547, 301 N Summit Ave, Hills, MN 56138 or email—t.holthaus@isd671.net Letter of application, resume, copy of teaching license, transcripts, and three (3) current letters of reference.
District Application: Submit a completed signed copy of the district employment application found on the District's website... www.hbc Patriots.com under employment tab.
 - An Equal Opportunity Employer -

CADNET NATIONAL ADVERTISING NETWORK

AUTOS WANTED
 MAKE \$1,000 WEEKLY PAID IN ADVANCE!
WEALTHY
 MAKE \$1,000 WEEKLY PAID IN ADVANCE!
FINANCIAL
HEALTH & FITNESS
MEDICAL
MISCELLANEOUS
WANTED TO BUY

Midwest Free Community Papers
Midwest Classifieds
 Call 507-825-3333 or 800-325-6440 to place your Minnesota Free Community Paper classified ad.

AUTOMOBILES/MOTORCYCLES WANTED
ADoption
EMPLOYMENT/HELP WANTED
FINANCIAL
HEALTH & MEDICAL
MISCELLANEOUS
WANTED TO BUY

SPRING SAVINGS



507-442-4341

 <p>NEW</p> <p>MSRP: \$47,320 \$39,276</p> <p>CHEVY BONUS TAG</p> <p>*FOR QUALIFIED BUYERS</p> <p>2017 CHEVROLET SILVERADO 1500 LT, ALL STAR PKG, HTD SEATS #1704</p>	 <p>NEW</p> <p>MSRP: \$32,090 \$26,635</p> <p>CHEVY BONUS TAG</p> <p>*FOR QUALIFIED BUYERS</p> <p>2017 CHEVROLET EQUINOX LT #1754</p>	 <p>NEW</p> <p>MSRP: \$35,490 \$29,457</p> <p>CHEVY BONUS TAG</p> <p>*FOR QUALIFIED BUYERS</p> <p>2017 CHEVROLET TRAVERSE LT, QUAD SEATING, ALUM WHEELS #17117</p>
 <p>WAS: \$18,995 \$13,985</p> <p>2004 GMC SIERRA 2500HD SLE, DURAMAX, BOSE, 217K #C160A</p>	 <p>WAS: \$6,325 \$4,985</p> <p>2005 CHRYSLER PACIFICA TOURING, 150K #1763B</p>	 <p>WAS: \$22,675 \$18,985</p> <p>2009 CHEVROLET SILVERADO 1500 LT, Z71, ALL STAR PKG, CHROME, 111K #1767C</p>





www.deboerchev.com



D. & G. Drinking Water Systems

Water made by reverse osmosis process
Rentals • Sales • Service

610 West Hatting • Luverne, MN
507-283-4630 • Darin Smeins
Lic. # WM068242

Take time out of your day to have a quiet time with God



DIAL-A-DEVOTION
283-4005

an outreach ministry of St. John Lutheran Church

New Prairie Insulation, Inc.
Serving Residences & Contractors
FREE ESTIMATES
---Insulation---

Arnold Brondsema
Beaver Creek, MN
507-673-2548 or
1-800-232-7089



Loans, leases, and crop insurance



Pat Barnett
866-601-0506



AgStar.com

AgStar Financial Services is an equal opportunity employer and provider.

read us online!
Star-Herald.com

Get all your Car Licenses & Title Transfers at
DEPUTY REGISTRAR'S 141 INC.
821 Main Street • Edgerton • 507-631-1028

Business Hours:
Monday through Friday, 8 a.m. - Noon, 1 p.m. to 5:15 p.m.
Saturday 8 a.m. to noon and
Wednesday evenings 6:15 p.m. to 8 p.m.

NOW OFFERING FAST TRACK

Ketterling Services, Inc.
401 S. Cedar St. • Luverne, MN • 507-283-2863 • www.ketterlingservicesinc.com
Hours: Tues.-Fri. 8:30 a.m. to Noon & 1 p.m. to 5 p.m. Sat. 8:30 a.m. to Noon

Roll-Off Service for Building Demo & Remodeling

SANITATION: Commercial Residential Rural		RECYCLING: Collection Dropoff
--	---	--

Monthly - Weekly - Daily



Orv & Sons, Inc.
Plumbing ~ Heating ~ Cooling
507-967-2464

Office hours: M-F 7:30-noon & 1-5 ~ Sat 7:30-9 a.m.

*Licensed for pump installation, sewer installation & Backhoe services
*Roto-rooter, Pipe Location & Camera Inspection System
*Oxyblast-water treatment Product
*Lennox Furnaces & Air Conditioners

308 S. Broadway St.
Ellsworth, MN

****NOW ACCEPTING CREDIT CARDS****

NOW OPEN



Only **\$1.90** per pound

U-Pick 'em
Bring your own containers

STRAWBERRIES



37806 910th St.
Heron Lake, MN
507-793-2288
www.schumachersnursery.com



Dave Hup
Realtor/Owner
507-920-5910
dave.landandhome@gmail.com

Billy Cowell
Realtor/Owner
605-254-5450
billy.landandhome@gmail.com

For all our listings visit
LuverneLandandHome.com

RE/MAX Land and Home
507-449-6111
117 East Main Street • Luverne, MN
Each Office Independently Owned and Operated


★ **OUR NEW OFFICE WILL BE OPENING SOON!** ★



www.Star-Herald.com

HARDWICK'S 125TH Celebration & All School Reunion

FRIDAY-SUNDAY JUNE 23RD, 24TH & 25TH



Schedule of Events

FRIDAY, JUNE 23

- "Wildcat Headquarters" Open from 3 to 8 pm – City Hall
 - Selling Hardwick 125th Celebration t-shirts, sweatshirts, hoodies and caps
 - Selling Hardwick 125th Memory Books
- Pipestone Cruizers Cruise-in Car Show - 5 to 8 pm. – Main Street
- Hardwick Fast Pitch Softball Game – 8:00 pm
- Outlaw Entertainment (Karaoke) – 8:00 pm to Midnight – Green Lantern Bar
NO COVER CHARGE.

SATURDAY, JUNE 24

- Co-ed Softball Tourney – Contact Crystal Swenson, 507-920-6436
- Tractor Ride to Edgerton – Registration 8 am at Green Lantern Café – Rollout 8:30 am – Breakfast at Green Lantern Café & Lunch at Grey Wolf in Edgerton
- "Wildcat Headquarters" Open at 10:00 am – City Hall
- Wildcat Burger Bar Special – 11 am to 2 pm - Green Lantern Café
- FREE Tons of Fun Inflatables – Noon to 9 pm – Main Street
- Bean Bag Tourney – Starting at 1 pm. Cost \$20.00 per team Sign up at the Green Lantern Bar. 100% Payback.
- FREE Bingo - 2 to 4 pm - under the tent across from the Hardwick Fire Hall
- FREE Fantasy Face Painting – 4 to 7 pm – Main Street
- Community Meal – serving 5 pm till gone – Hardwick Fire Hall
- All School Reunion Meal and Program – serving 5 to 6:15 pm Under the tent. Catered by the Green Lantern Café. Registration required.
- Hardwick's 125th Celebration Parade – 7:00 pm – Main Street
- Pedal Pull – following the parade - Main Street - ages 4-11
- Ag Olympics (Bale Toss & Tug-o-War) - 7:30 to 9 pm – Main Street – guys and gals
- Street Dance – 9:00 pm to 12:30 AM – "IV Play" - Main Street – NO COVER CHARGE.

SUNDAY, JUNE 25

- Zion's 125th Community Worship Service – 10:30 am – Under the tent across from the Hardwick Fire Hall. Lunch following Worship. Free Will Offering

PIPESTONE CRUIZERS CRUISE-IN CAR SHOW
Friday, 5 to 8 pm
Main Street

OUTLAW ENTERTAINMENT (Karaoke)
Friday
8 pm to Midnight
Green Lantern Bar
no cover charge

CO-ED SOFTBALL TOURNAY
Saturday


TRACTOR RIDE TO EDGERTON
Saturday
Rollout 8:30 am

COMMUNITY MEAL
Saturday
5 pm til gone

PARADE
Saturday
7 pm
Main Street

STREET DANCE
IV Play
Saturday
9 pm to 12:30 am
Main Street
no cover charge

Sponsored by





HARDWICK ALL-STARS

WILDCATS: New Horizon Farms, Mouw's Feed & Grain
BOMBERS: Alliance Communications, CHS Eastern Farmers, Herman Motor Co., Ketterling Services, Pizza Ranch, Popkes Car Care
FANS: M&H Hardware, Papik Motors, Schwartz Farms Inc.

Call Chantel or Rick to advertise your events in the Announcer!
507-283-2333