

# A Luverne ANNOUNCER

117 West Main St. • Luverne, MN 56156-0837 • Phone 507-283-2333 • Address Service Requested

PRSR STD  
U.S. POSTAGE  
PAID  
Permit No. 22  
Page 1 Printers  
Postal Customer

VOLUME 86 NUMBER 15

ROCK COUNTY'S FREE CIRCULATION PUBLICATION SINCE 1931

April 3, 2016

## Community Update

### Meetings

**Blue Mound Quilters** will meet at 7 p.m. Monday, April 4, at the Rock County Public Library. Mary Akkerman will do a demonstration. All quilters are invited and welcome.

**Pleasant View Cemetery Association** annual meeting will be at 7 p.m. Monday, April 4, at the home of Richard and Ruth Opsata at 110 West Luverne Street. Call Jan at 507-855-2266.

**Springwater Township Board** will meet at 7 p.m. Tuesday, April 5, at the home of Teresa Kramer.

**Luverne Lady Red Hats** will meet for lunch at Sterling's Café at 11:30 a.m. Friday, April 8. Contact Kay Umbreit at 507-283-2778 to make reservations by Tuesday, April 5.

**Beaver Creek Township Board of Appeal and Equalization** will meet at 11 a.m. Monday, April 11.

**Tourist Club** will meet at 7 p.m. Tuesday, April 12, at the home of Connie Lindbloom.

**Al-Anon** meets from 6:30 to 7:30 p.m. Wednesdays in the Buffalo Ridge Meeting Room (lower level) at the Sanford Medical Center in Luverne. Call Stephanie at 507-449-1246.

**Narcotics Anonymous** meets at 7 p.m. Fridays and for basic text study at 7:30 p.m. Tuesdays in the basement of St. Catherine Catholic Rectory, 203 E. Brown St., Luverne. Use east door. For more information call 507-220-0137.

**Alcoholics Anonymous** meets at 8 p.m. Wednesdays and Saturdays in the Methodist church, Luverne. Call 605-321-4324.

**Alcoholics Anonymous and Al-Anon** meet from 8 to 9 p.m. every Thursday in Runals Memorial Hall, Edgerton. Call Naomi, 507-215-2956, with questions.

### Grace Lutheran hosts blood drive April 4

Grace Lutheran Church in Luverne will host a Red Cross blood drive from 1-7 p.m. Monday, April 4. The double red cell machines will be available. To make an appointment to donate, download the free Red Cross [Blood Donor App](#), visit [redcrossblood.org](#) or call 1-800-733-2767.

### Grief support group begins April 4

Sanford Luverne Hospice will offer a five-week Grief Support Group beginning April 4. Meetings will be Mondays from April 4 to May 2 from 5-6:30 p.m. at Sanford Luverne Medical Center in the Blue Mound Room. Register by calling the Hospice office at 507-283-1805.

### Bible Study Fellowship April 5

A Bible Study Fellowship group for women meets Tuesdays at 6:45 p.m. in the American Reformed Church, Luverne. Tuesday, April 5, is guest night. Those interested in learning more about BSF and those interested in registering for the Fall 2016 study of the Book of John are invited to attend. Email Brenda at [brenda@myhrestudio.com](mailto:brenda@myhrestudio.com) with questions.

### 'Alvin and the Chipmunks' April 7

The free Bank Nite movie, "Alvin and the Chipmunks: The Road Chip," rated PG, will begin at 6 p.m. Thursday, April 7, at the Palace Theatre in Luverne. Sponsored by First Farmers & Merchants National Bank and Papik Motors, a free, family-friendly movie is shown on the first Thursday of every month as it was done for "Bank Nite" in the 1930s.

### Students perform 'Pirates 2' April 8

Luverne Elementary first- and fourth-grade students will present their music program, "Pirates 2," at 2 p.m. Friday, April 8, in the elementary gym.

### Jazz bands to perform April 11

Luverne Middle and High School jazz bands will perform at 8 p.m. on Monday, April 11, at the American Reformed Church in Luverne. The event is free to the public.

### Free tax help available at library

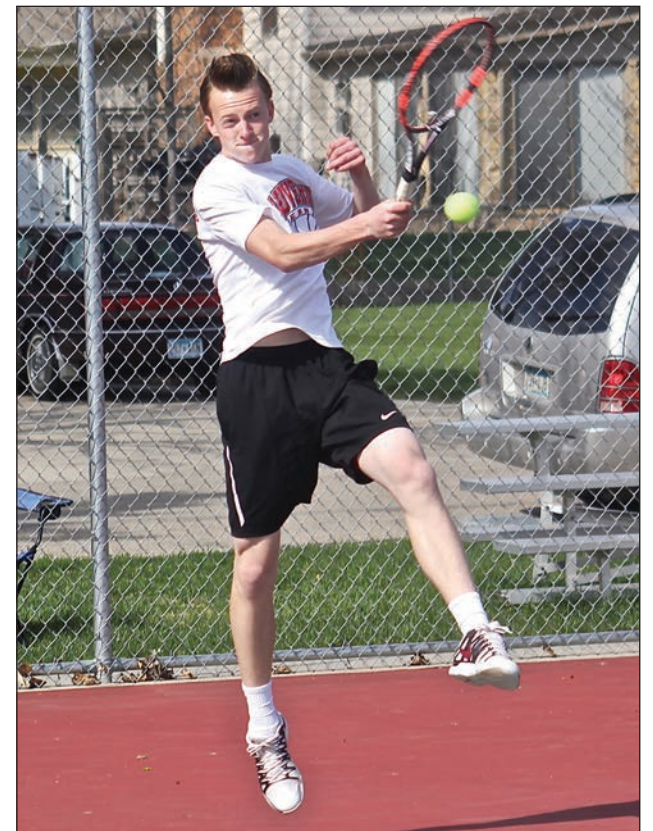
Volunteers through AARP will provide free tax services at the library in Luverne through April. Call the library, 449-5040, to make an appointment. Appointments are required. Evening appointments are also available. Bring Social Security cards to appointments. The service is free for any private individual with a simple tax format.

### Library offers Story Hour and Laptime

Story hour for ages 4-5 will start Thursday, April 7, and run through May 5 every Thursday morning from 10-11 a.m. Story Hour includes stories, songs, crafts and more. Laptime is for ages birth through 3 with an adult and will begin Friday, April 8, and run through May 6. It meets every Friday from 10:30-11 a.m. Laptime includes stories, songs, crafts and more.

## Rock County STAR HERALD

Coming this week in the Rock County Star Herald



John Rittenhouse photo/0407 tab front

### Spring is here

The preparation is complete and the events are ready to begin for the 2016 version of the spring sports season in Southwest Minnesota. Athletes from Luverne, Hills-Beaver Creek, Adrian and Ellsworth High Schools are scheduled to compete in the coming days. For a closer look at the area teams, get a copy of the Spring Sports Preview that will be found inside Thursday's edition of the Star Herald.

# DEBOER

## EDGERTON

### SPRING BLOWOUT!

**DON'T MISS OUT ON THESE SPECIALS!**



MSRP: \$37,450  
**\$33,950**

**CHEVY BONUS TAG**

2016 CHEVROLET IMPALA  
LTZ, BOSE, HTD & COOLED LTR #1661



MSRP: \$68,315  
**\$64,975**

**CHEVY BONUS TAG**

2016 CHEVROLET SUBURBAN  
LT, BOSE, HTD LTR, SUNROOF #1662

 <p>MSRP: \$47,485 <b>\$40,795</b></p> <p>2016 CHEVROLET SILVERADO 1500 2LT, ALL STAR EDITION #1684</p>	 <p>MSRP: \$47,195 <b>\$40,395</b></p> <p>2016 CHEVROLET SILVERADO 1500 LT, HTD SEATS, ALL STAR PKG #1663</p>	 <p>MSRP: \$50,035 <b>\$47,085</b></p> <p>2016 CHEVROLET SILVERADO 1500 LTZ, BOSE, HTD LEATHER #1656</p>	 <p>MSRP: \$52,545 <b>\$42,295</b></p> <p>2016 CHEVROLET SILVERADO 1500 LTZ, SPORT PKG #1674</p>	 <p>MSRP: \$43,475 <b>\$42,635</b></p> <p>2016 CHEVROLET SILVERADO 3500HD LT, Z71 #1635</p>	 <p>MSRP: \$40,705 <b>\$37,995</b></p> <p>2016 CHEVROLET SILVERADO 3500HD WORK TRUCK #1668</p>
 <p><b>\$37,650</b></p> <p>2015 CHEVROLET SILVERADO 1500 LTZ, Z71, BOSE, HTD/CL LTR, 38K #1647A</p>	 <p><b>\$33,950</b></p> <p>2013 CHEVROLET SILVERADO 1500 LTZ, BOSE, HTD LEATHER, 34K #1659A</p>	 <p><b>\$36,975</b></p> <p>2013 CHEVROLET SILVERADO 3500HD LT, DURAMAX DIESEL, 14K #15212A</p>	 <p><b>\$42,595</b></p> <p>2012 CHEVROLET SILVERADO 3500HD LTZ, DURAMAX DIESEL, BOSE, 49K #1644A</p>	 <p><b>\$30,990</b></p> <p>2012 CHEVROLET SILVERADO 1500 LTZ, HTD LTR, BOSE SOUND, 40K #1642A</p>	 <p><b>\$27,500</b></p> <p>2011 CHEVROLET AVALANCHE Z71, BOSE, HTD LTR, 75K #P1527</p>
 <p><b>\$17,785</b></p> <p>2007 CHEVROLET SILVERADO 1500 LT, CHROME PKG, 111K #C16EVA</p>	 <p><b>\$18,750</b></p> <p>2007 GMC SIERRA 1500 SLE1 PREFRD PKG, 120K #1649B</p>	 <p><b>\$27,985</b></p> <p>2013 GMC TERRAIN SLT, DENALI, AWD, 35K #A1615</p>	 <p><b>\$34,985</b></p> <p>2015 CHEVROLET TRAVERSE LTZ, AWD, BOSE, 25K #A1617</p>	 <p><b>\$24,985</b></p> <p>2014 CHEVROLET TRAVERSE LT, ALL STAR PKG, 19K #A1508</p>	 <p><b>\$24,995</b></p> <p>2012 BUICK ENCLAVE CXL, HTD LTR, CHROME, 42K #P1520</p>
 <p><b>\$22,987</b></p> <p>2013 CHEVROLET EQUINOX LTZ, AWD, SUNROOF, 51K #A1616</p>	 <p><b>\$19,645</b></p> <p>2007 CADILLAC ESCALADE ESV, DVD, MOONROOF, 146K #1618B</p>	 <p><b>\$23,450</b></p> <p>2013 FORD EXPLORER XLT, AWD, HTD LTR, 78K #A1534A</p>	 <p><b>\$11,950</b></p> <p>2006 GMC YUKON DENALI XL, DVD, SUNRF, 179K #1525B</p>	 <p><b>\$44,995</b></p> <p>2015 CHEVROLET TAHOE LT, BOSE, HTD LTR, 39K #1623B</p>	 <p><b>\$31,945</b></p> <p>2014 BUICK ENCLAVE CXL, PREM., DVD, MOON, 71K #1611A</p>







**www.deboerchev.com**  
507-442-4341



**Duane J. Mulder Realty**  
DUANE MULDER AUCTION SERVICE  
Office 507-283-4901



**AUCTION SCHEDULE**

Currently Taking Consignments For Our Next Indoor Auction At The Duane Mulder Auction Center, Downtown Beaver Creek, MN. Call 507-283-4901 Or 507-220-3558 To Get Your Items Consigned To This Auction.

**Saturday Morning, April 9** – 10:00 A.M. – Acreage Items, Tools & Household Item Auction Near Wilmont, Mn. Pat Honken, Owner.

**Saturday morning, April 23** – 10:00 A.M. – Household, shop and acreage equipment. Kanaranzi area. Stan & Gert Wessels, owners.

**DUANE MULDER** – Auctioneer – Real Estate Broker – Certified Agricultural Appraiser. Office Phone 507-283-4901 - Cell Phone 507-220-3558.

**JMSI**  
JENSEN MANAGEMENT SERVICE, INC  
REAL ESTATE - APPRAISALS - MANAGEMENT

**Check out our listings at:**  
**WWW.JMSI.NET**

**Call: 507-283-2391**  
*Call about our private listings.*

William (Bill) V. Weber, broker - 507-220-4803  
William (Bill) J. Korth - 507-227-4958  
Tamra (Tammy) Jo Makram - 507-227-7010

**Dave Hup**  
Realtor/Owner  
507-920-5910  
dave.landandhome@gmail.com

**Billy Cowell**  
Realtor/Owner  
605-254-5450  
billy.landandhome@gmail.com

For all our listings visit  
**LuverneLandandHome.com**

**RE/MAX Land and Home**  
507-449-6111

117 East Main Street • Luverne, MN  
Each Office Independently Owned and Operated

**PRICE REDUCED**

**408 N ESTEY, LUVERNE | \$99,900**

This home has so much to offer! Beautiful two story home offer permanent vinyl siding in 2007, new shingles in 2012, 8 x 10 shed, 12 x 20 wood deck and a detached 2 stall garage on the exterior. Once you walk in you will love the charming details and the beautiful woodwork. The kitchen offer country cupboards, dining area, pantry and a built in hutch and was remodeled in 2000. The living room has a warm and inviting feel with a wood burning fireplace and brick surround. The rest of the main floor has a nice front room with a newer bay window, home office and a full bathroom. The upper level offers 3+ bedrooms. The fourth room could be used as a nursery, office or storage. Finishing off the upper floor is a beautiful 3/4 bathroom with claw foot tub and pedestal sink. You don't want to miss out on this warm and inviting home!

**310 S ESTEY, LUVERNE | \$64,900**

Move in ready one story home offers a pleasant kitchen with nice counter space and a dining area. The living room has great natural lighting and extra space for an office area. The main level also offers a full bath, master bedroom with walk in closet and a 2nd bedroom. Attached one car garage has been insulated. Exterior has nice landscaping and patio area. This would make a great starter home, investment property or a place to downsize. NEW SHINGLES WILL BE INSTALLED IN SPRING 2016!

**LUVERNE'S LOCALLY-OWNED AND OPERATED MLS AGENCY**

FOR COMPLETE LISTING LOG ONTO  
**WWW.CRAGOE.COM**

*Selling Real Estate in the Heart of the Prairieland.*

Your hometown real estate broker for over 22 years  
Scott Adams, broker 507-227-0840  
Gene Cragoe, broker lic. in MN & SD info@cragoe.com 507-283-2647 or 1-800-689-2647

**Large Morning Household & Antique PUBLIC AUCTION**

**2008 Mazda CX-7, Household, Antiques, Collectibles, Tools, Outdoor & Misc.**

**Saturday April 9, 2016 10:30 am**  
American Legion Building Hills, MN

**HOUSEHOLD:** Like new GE Washer & dryer; Vizio 42" flat screen TV; Sansui 19" flat screen TV; Bedroom sets; Dining table w/ chairs; Reclining Sofa; Recliners; Glider rocker; End tables; Lamps; Entertainment center; Wall décor; Mirrors; Magazine rack; Pictures; Oak shelves; Stainless Steel pots & Pans; George Forman grill; Small kitchen appliances; 30 cup coffee maker; Bakeware; Cooking utensils; Dishes; Tableware; Cutlery set; Blender; Tupperware; Dish towels; Bath towels; Bedding; Blankets; Telephones; Thermos; File cabinets; CDs; Xmas décor; Books; Cleaning supplies; Sewing supplies; Many totes w/ misc.; Clocks; Fellow's paper shredder; Caps & Gloves; Schwinn exercise bike; Mounted pheasants; (4) large combination safes; 3 Small safes; Flags; Dehumidifier (near new); New folding chairs; Sleeping bags; Rugs; Seasonal décor; Much general household items in 75+ totes;

**ANTIQUES & COLLECTIBLES:** 48" solid oak round table w/ leaf and 4 press back chairs; China hutch; Steel bed frame; Oak chair; Watt ware; Spices; Lightening balls; Glassware; Crystal glass; tea cups & saucers; Silverware sets; Precious Moments collection; Knick-Nacs; Quilts; Wooden boxes; Steel tractor seat; Cream cans; Bushel basket; Luverne High School annuals;

**TOOLS & OUTDOOR:** Pro-Force 7 gal air compressor; Hand tools; Electric hand tools; 8' Werner step ladder; Works step ladder; Toro eleeet leaf blower; Hedge trimmer; Tool boxes; DeWalt cordless drill; DeWalt reciprocating saw; Palm sander; Sodering gun; Bolt cutter; Dayton tap & die set; Dremmel; Jig saw; Drill & drill bits; Garden hose & reel; Garbage cans; Garden hand tools; Much misc. hardware; Storage cabinets; Mop buckets Snow rake; Wind chimes; Bikes;

**CAR:** 2008 Mazda CX-7, 136,000+ miles, loaded, black in color, very sharp, one owner

**MUCH MISC TOO NUMEROUS TO MENTION**

**MARVIN DOERING & others, owners**

**TERMS:** Cash, Good Check, Visa, Master Card, NO GAURANTEES, Nothing to be removed until settled for.

**Elbers Auction Service**  
"Quality Auctions Since 1988"  
P.O. Box 196 Hills, Minnesota 56138

Keith Elbers 507-962-3433 or 920-6131  
Clark Ahders 712-470-4700  
www.elbersauction.com

**210 E Main, Luverne**

**\$75,000**

**This building has great opportunity for Office or retail space. It also has two rental apartments on upper level.**

**Real Estate Retrievers**  
Matt Larson, Broker

**LUVERNE, MN • 507-283-4216**  
**HILLS, MN • 507-962-3433**

REALESTATEREtrievers.COM • REALTOR.COM • HOMEVIEWSIUXFALLS.COM

**VISIT OUR NEW WEBSITE**  
**WWW.ALLSTATETEAM.COM**

**1406 EVERGREEN**

**NEW LISTING**

Located in the newer Evergreen Addition this 3 bedroom ranch style homes offers abundant living space. This lovely home features a main floor living room with vaulted ceiling and lighted niche's, dining room with front exposure, 2 full bedrooms, master bath, tv room which venting is in place to add a fireplace off of the kitchen area, Kitchen features custom made cabinetry, small pantry area, rollout shelving and is open to an eat in area and the tv room. We all love a main floor laundry and this one won't disappoint. There is an attached 3 stall garage with access to the back yard. From the tv room you walk out to a covered back deck to enjoy grilling. The lower level of the home features a family room, 3rd bedroom, possible 4th bedroom egress window in place and possible 3rd bath as the plumbing is in place to add that additional bathroom, there is a area off of the family room which would be great for crafts, children toys or use as an office area. Don't miss out on this.

**607 S DONALDSON**

**NEW LISTING**

This home offers much more room than you could imagine. The living rooms is large and spacious with new carpeting in the past few years. The kitchen has refaced cabinetry, appliances are included with an attached dining area. The 2 main floor bedrooms have hardwood floors under the carpet, lots of closet storage is available in this home. The lower level features a possible 3rd bedroom is the legal egress is added, a family room and utility area. Desirable corner lot. Call your favorite agent today.

**116 S DONALDSON**

**PRICE REDUCED**

Sellers are Motivated!!! The owners of this home have put in some great renovations over the past several years including a new roof, new kitchen, new windows and new floor covering. The home features an open floor plan with a large kitchen, dining room with hardwood floors, great natural lighting in the living room and a master bedroom with 3/4 bath on the main level. The upper level has 2 spacious bedrooms, walk in closet and full bath. The exterior features vinyl siding a covered front porch, attached single stall garage and is located on a corner lot. Short walk to down town and the public school. You should check out this affordable house today.

**201 COTTAGE GROVE**

**PRICE REDUCED**

This home has been totally repainted both inside and out. Great 2 bedroom home on a corner lot. There is a breakfast area with sliders to the deck and the private fenced in back yard. A storage shed has recently been added and the lawn is lush and well manicured. The main level of the home boasts 2 bedrooms and a full bath with a spacious living room. Hardwood floors can be found throughout the main level including under the existing carpeting - per information obtained from previous owners. The basement features a family room, a private office area and a newly renovated 3/4 bath. The exterior has cedar siding which has received a fresh coat of paint and the shingling was done in 2001. The garage door was expanded to be accessible to a full size pickup. New furnace and A/C unit in 2011. It's move in ready and a great place to call home

**933 BLAINE, LARCHWOOD**

**PRICE REDUCED**

Are you looking for that perfect ranch style home - STOP and look here. This home features 3 bedrooms on the main level a large living room - massive kitchen dining are with hardwood floors and a Main floor laundry with cabinet and counter space that you will love. The home has a large open basement area that would make a great future family room. Hardwood floors are found through out the home with Carpeting in the Bedrooms and living area. The home features sliders to a wooden deck and there is an additional patio area behind the garage, large corner lot. The garage is an oversized two stall attached. It's a wonderful home waiting for your family.

**500 S CENTRAL, HILLS**

Check out this well cared for Gorgeous Victorian style home. This home features 4 Spacious bedrooms on the upper level with a full bath featuring a claw foot tub. The main level shows the beauty of this home with crown molding, hardwood floors, built in hutch in dining room and colonnades with lead glass doors to display your beautiful glass ware, the wood work in this home has been well cared for. The kitchen is large leading to the formal dining room. Kitchen appliances are included with the sale. The exterior of the home boasts a large corner lot with a newer oversize 2 stall garage in great condition and a 2nd older 2 stall garage great for storing collector cars or other personal items. Home is located on a LARGE corner lot. This home has been well cared for.

**If you are considering selling your home, call for a free market analysis to find out what your home may be worth. We look forward to the opportunity to be of service.**

**SPRING Clean Up!**

**Luverne Love the life!**

**PLEASE TAKE NOTE**  
**REFUSE & RECYCLING PICK-UP REMAINS THE SAME**  
Please set garbage & recycling separate from junk!  
Very large unsorted piles of junk will NOT be picked up

**PICK-UP SCHEDULE**

**Route 1: Main St. and to the South**  
Junk will be picked up Monday, April 18

**Route 2: Main St. to Dodge St.**  
Junk will be picked up Tuesday, April 19

**Route 3: Dodge St. to Barck & Tri-State Addition**  
Junk will be picked up Wednesday, April 20

**Route 4: Barck and to the North**  
Junk will be picked up Thursday, April 21

**APPLIANCE PICK UP - FRIDAY, APRIL 22 - Cost is \$15**  
Must be preregistered and pre-paid at City Offices.  
**Absolutely NO REFUNDS will be made!**  
Call 449-2388 with questions.

**What will NOT BE PICKED UP**  
Tires, toxic or hazardous chemicals, TV's, electronics, computers, VCR's, stereos, camcorders, cell phones, game decks, car batteries, fluorescent light tubes, waste oils, paints, and household hazardous waste will NOT be picked up and should be disposed of properly. Very large unsorted piles will NOT be picked up. Additionally, large quantities of building materials from construction or remodeling should be disposed of as part of your project and will not be picked up by the City during Spring Clean-Up. It is your responsibility to take these items to the Transfer Station. The Rock County Transfer Station is located ¾ mile East of Luverne on Rock County Road 4, and ¾ mile North on Rock County Road 9.

**City-Wide Branch Collection Monday, April 11**  
Please place branches parallel to the curb by 7 a.m.

**IN LOVING MEMORY OF**

**PAULA JEAN DICKMAN**  
7/26/60 ~4/9/11

The moment that you died my heart was torn in two, one side filled with heartache, the other died with you. I often lie awake at night, when the world is fast asleep, and take a walk down memory lane, with tears upon my cheeks. Remembering you is easy, I do it everyday, but missing you is heartache that never goes away. I hold you tightly within my heart and there you will remain, until the joyous day arrives that we will meet again.

**Deeply missed by family & friends**

**WANTED GRAVEL BIDS**

Clinton Township seeking bids for crushed and/or screened gravel to be delivered on the township roads.

Please submit bids to  
**Lowell Bonnema**  
1161 21st St, Steen, MN 56173  
bids will be opened

**Monday, April 4**  
at 8p.m. at the Township Hall  
Lowell Bonnema, Clerk

I'm looking for a T.V. set

**STAR HERALD CLASSIFIEDS**



*Pamper Me*  
LADIES DAY  
APRIL 9 9AM - 3PM  
AT VALOCITY STUDIOS  
219 S MAIN AVE., HILLS

Boutique On Broadway  
WOMEN'S APPAREL & ACCESSORIES  
tastefullysimple. MARY KAY jamberry  
DEANNA SMITH HEATHER SCHONEMAN  
INDEPENDANT CONSULTANT INDEPENDANT CONSULTANT  
GET AWAY FOR THE DAY & JOIN US FOR SOME FUN & REFRESHMENTS

**MORNING ACREAGE EQUIPMENT AND HOUSEHOLD AUCTION**  
NEAR ST. KILIAN/WILMONT, MINNESOTA

As I have sold my acreage I will offer the following property at Public Auction on Acreage No. 18705, located one fourth mile west of St. Killian, MN on 140th Street; or from the west edge of Wilmont, MN, 2 miles west on County Road 16/160th Street, 2 miles North on Edwards Avenue/County Road 15, and one fourth mile west on 140th Avenue to acreage No. 18705; or from the Lismore, MN corner on Hwy 91, 1 mile north on Hwy 91, 3 miles east on County Road 16/160th Street, 2 miles north on County Road 15/Edwards Avenue, and one fourth mile west on 140th Avenue to acreage No. 18705.

**SATURDAY MORNING, APRIL 9 -- SALE TIME 10:00 A.M.**

LUNCH SERVED BY THE COUNTRYSIDE INN, ADRIAN, MN

**AUCTIONEERS NOTE:** There is a very large amount of items on this auction. This auction ad will be only a partial listing. We will be running 2 auction rings during a large portion of the auction. Most likely one auction ring will be selling household items and another auction ring will start with shop items & misc. items and move onto the farm equipment.

**VEHICLES:** 1996 Mustang with 3.8 engine; 1990 Ford F-150, 2-wheel drive pickup with 6-cylinder engine & topper

**FARM MACHINERY:** Allis 190XT gas tractor with dual hydraulic, cab, good rubber, 3-point hitch & Dual loader (sold as a unit); tractor chains; John Deere 13' tandem disc; 18' straight disc; John Deere No. 434A, 4-row wide planter; New Idea corn picker with 8-roller husking bed; 2-row stalk chopper; 15' mounted field cultivator; Massey 4-row wide cultivator; Allis 4-bot-tom slat plow; 2 flare box wagons; barge box wagon; Hanson 3-point snow blower; rotary hoe sections for yard work; drag sections for yard work; Kelly Ryan truck loading elevator with 8 hp Briggs gas engine; 2-wheel trailer.

**SHOP ITEMS:** floor jacks; bottle jacks; drop cords; battery charger; tool boxes; standing parts bins; tool boxes; car ramps; air compressors; jack stands; chain hoist; breaker bars; battery chargers.

**FARM RELATED TOOLS:** large assortment of forks; spades; shovels; garden tools, garden & farm related tools; 2 ATV sprayers; Yamaha 3-wheeler; portable heaters; LB White propane heater; (5) 100# propane tanks; log chains; apple picker.

**ANTIQUE & COLLECTIBLE ITEMS:** John Deere hand corn sheller; steel farm equipment wheels; assortment of old metal & poly toys; wire seed corn dryers; milk cans; sprinkling cans; cow stanchions; Flexible Flyer sled in very good condition; barn windows; wash boards; comic books; 8 & 10 gallon crocks; manual typewriter; wood clothes rack.

**MISC. ITEMS:** wire dog kennel sections; fishing equipment; cage traps; steel animal traps; chicken feeders; 3 overhead gas tanks; wire corn crib sections, steel posts; wood posts; electric fence posts; metal carts; garden tiller; snow thrower; ladders; bikes; golf clubs; full size pickup topper; large amount of 4'x8' - 3/4" pressed wood sheets; gas cans; lots of used tires & rims; bow & arrow set; much more misc. to numerous to advertise.

**EAR CORN:** north bin has estimated 60 bushels of ear corn; south bin has an estimated 30 bushels of ear corn; sold as a one price for each bin and not sold by the bushel.

**SCRAP METAL:** There are piles of scrap metal in located in the grove and old cars & pickups for parts, rebuilders & scrap metal. Included are as follows -- (3) S-10 Chevrolet pickups, Ford F-150 pickup, Monte Carlo, Pontiac Bonville, and several other vehicles; old rider lawn mowers for parts & scrap; old 2-wheel trailers; old snowmobiles for parts & scrap; large amount of old farm equipment for parts & scrap; used batteries; copper & aluminum wire; numerous vehicle radiators.

**CORN BURNING STOVE:** Auburn corn burning stove.

**HOUSEHOLD APPLIANCES:** 2 chest freezers; refrigerator; window air conditioner.

**HOUSEHOLD FURNITURE:** dining room table; dressers; tan sofa; 3 recliners; microwave stand; end tables; wood high chair; portable Singer sewing machine; 2 file cabinets.

**ANTIQUE & COLLECTIBLE FURNITURE:** curved glass china cabinet; buffet; dry sink cabinet; round pedestal oak table with 3 leaves; Seaman's trunk; 2 antique lamps table with claw feet.

**MISC. HOUSEHOLD ITEMS:** Hamilton Beach electric mixer; crock pots; pots; pans; dishes; china; 2 Hen on the Nest dishes; picture; glass angels & bird baths; 3 new afghans; table lamps; clocks; cook books; large assortment of Western books; upright digital scale; bug zapper; Coleman lanterns; fruit jars; toys; tread mill; fans on stands; electric heaters; Bissell upright vacuum; more misc. items to numerous to mention.

**TERMS:** Complete settlement immediately after the auction. No guarantees. Not responsible for accidents or theft of items purchased. Computerized drivers license machine in use. All buyers are required to provide clerks with identity information.

All items must be removed from the acreage 10 days after the auction. No exceptions.

**PAT HONKEN, OWNER**

www.midwestauction.com-Duane Mulder Auction & Realty

SALE ARRANGED & CONDUCTED BY:

**DUANE MULDER AUCTION SERVICE**

DUANE MULDER -- E-MAIL: duanejmulder@gmail.com

REAL ESTATE BROKER (MN, IA, SD) -- CERTIFIED AGRICULTURAL APPRAISER  
1470 COUNTY HWY 4, LUVERNE, MN -- OFFICE PHONE 507-283-4901

DUANE MULDER, AUCTIONEER (67-44), LUVERNE, MN -- 507-220-3558

JIM VON HOLTUM, AUCTIONEER (53-10), LISMORE, MN -- 507-220-3556

RANDY BUNTJER, AUCTIONEER (53-18), ELLSWORTH, MN -- 507-360-2650

J.J. VON HOLTUM, AUCTIONEER (67-80), LUVERNE, MN -- 507-227-8029



**Upcoming Public Auction**

Of 160+/- Acres of Martin Twp, Rock County, MN Farmland  
Sold in 2 separate 80+/-acre tracts

Located adjoining the Iowa and Minnesota State Line.

**Tuesday April 12, 2016 @ 10:30 A.M.**

**Location:** from Lester, IA go 5 miles North on Blktop K-30/Dove Ave. to State Line or from Hills, MN go 1 mile South on County Rd 6 to 21st St. then go 1 mile East on 21st St to 70th Ave. then go 1 mile South.

**"Your Farmland Specialists"**

**Auctioneers Note:** We are honored to have been asked to conduct this auction for the Leuthold family. This tract of farmland has been in the Paul and Betty Leuthold family since 1961. These are excellent High Producing farms and would make an excellent investment or add on to your current farming operation!! Land in this area does not come for sale often! Make Plans Today to Attend!!

**Legal Description of Tract 1:** The S 1/2 of the SW 1/4 in Section 35, 101N, Range 46W of the 5th P.M., Martin TWP. Rock County, MN—subject to public roads and easements of record.

**General Description of Tract 1:** This outstanding 80 acre tract of farmland contains approx. 77 tillable acres according to Rock County FSA, with the balance in road and ditch. This farm has a corn base of 148.86 acres with a PLC yield of 182bu. This is combined with Tract 2. The predominant soil types include: P46-Trent, P34B-Splitrock, P24B-Moody, P42A-Whitewood and P21A-Marcus. This farm has an average soil rating according to Agri Surety data of 92.7. According to Rock County Assessor, the entire 160 acres has a CER of 86.35. This farm is classified as NONHEL. The topography of this farm is gently rolling. The entire farm has had cattle manure applied for the last 10+ years including 2016. This farm has tile and is well drained. This is a very desirable farm and has been well managed and is in a good state of productivity. Make plans today to attend this auction! Here is your opportunity to own some Rock County farmland with excellent soils in the Garden area of Rock County, MN. This farm is available to farm for the 2016 crop year.

**Legal Description of Tract 2:** The N 1/2 of the SW 1/4 in Section 35, 101N, Range 46W of the 5th P.M., Martin TWP. Rock County, MN—subject to public roads and easements of record.

**General Description of Tract 2:** This outstanding 80 acre tract of farmland contains approx. 78 tillable acres according to Rock County FSA, with the balance in road and drainage ditch. This farm has a corn base of 148.86 acres with a PLC yield of 182bu. This is combined with Tract 1. The predominant soil types include: P5A-Calco, P42A-Whitewood, P34B, P34C2-Splitrock, P46-Trent, P24B, P24C2-Moody and P16B, P16A-Graceville. This farm has an average soil rating according to Agri Surety Data of 88. According to the Rock County Assessor, the entire 160 acres has a CER of 86.35. This farm is classified as NONHEL. The topography of this farm is gently rolling. The entire farm has had cattle manure applied for the last 10+ years including 2016. This farm has tile and is well drained. This is a very desirable farm and has been well managed and is in a good state of productivity. Make plans today to attend this auction! Here is your opportunity to own a Rock County tract of farmland with excellent soils. This farm is available to farm for the 2016 crop year. (Note: Corn base and PLC yield will be split according to Rock County FSA future determination).

These farms have been soil tested by Extended Ag and have excellent fertility and are very desirable to farm with half mile rows. Current longtime tenants Bacon Maker Farms would have a desire to build a strong relationship with future potential buyers in regards to purchasing crop and a manure management plan if potential buyers would desire.

**Method of Sale:** Offered first will be Tract 1-the South 80 acre tract and remain sold. Then Tract 2 the North 80 acre tract will be sold. Tracts will not be combined.

**Real Estate Taxes:** According to the Rock County Treasurer, the current net Real Estate taxes on the entire 160 acre tract are \$6434.00 approximately per year. Seller will pay all real estate taxes which would become delinquent if not paid by Oct 15, 2016, as well as all prior taxes.

**Possession of Farmland:** Possession will be given on day of auction.

**Terms:** Purchaser(s) will be required to pay a non-refundable 15% of the purchase price immediately following the auction and also agree to enter into a purchase agreement with the remaining balance due and payable on closing day June 1, 2016 when the buyer shall receive a clear and marketable abstract of title to the property. This farm is being sold as is as a cash sale with no finance contingencies. While every effort has been made to ensure the accuracy of the information herein, all prospective buyers are encouraged to inspect the property and verify all data provided. No warranties are expressed or implied. Any announcements made day of the auction will supersede any advertisements. Aerial maps, soil maps and auction booklets are available upon request. This land is sold subject to the confirmation of the Sellers. Auctioneers and Real Estate brokers are representing the sellers. If any additional information is requested, please contact the agents listed below.

**Heirs of Paul & Betty Leuthold—owners**  
Sellers Attorney—Lachlan Bonander will be closing Attorney

AUCTIONEERS  
MARK ZOMER 712-470-2526  
KEITH ELBERS 507-920-6131

**VandeVegteZomer**  
Realty & Auction

Bring in your current policy for a comparison today!



South Hwy. 75, Luverne, MN  
507-283-8383 or 1-800-258-4471  
E-mail: info@Cattnach.com  
Website: www.cattnach.com

**CATTNACH**  
INSURANCE AGENCY

**BLUE MOUND FIGURE SKATERS**

**SPRING LESSONS**  
**LEARN TO SKATE**

HOCKEY SKATING SKILLS • FIGURE SKATING LESSONS

ONLINE REGISTRATION  
WWW.BLUEMOUNDFIGURESKATING.COM

SIX WEEK LESSONS  
**APRIL 6 - MAY 11**

LEARN TO SKATE & HOCKEY SKILLS  
**\$75**

FOR MORE INFORMATION VISIT: WWW.BLUEMOUNDFIGURESKATING.COM

**REMINDER**

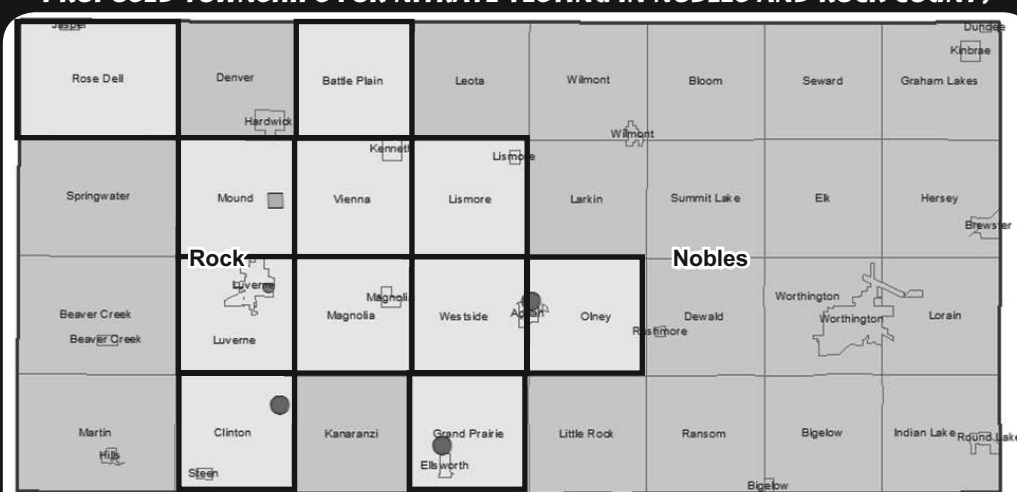
Do you know if you have nitrate in your drinking water? You can find out! Just collect a water sample from your well, fill in the well survey, and return with your water sample. Sample kits will be sent out in the mail for your convenience.

The Minnesota Department of Agriculture designed this nitrate testing project to look at the private well nitrate levels in your township. Wells in your township may be at risk to nitrate contamination due to the geology and soil type your area. Nitrate is one of the most common groundwater contaminants found in rural areas. Infants that drink water that is high in nitrate may develop Blue Baby Syndrome (Methemoglobinemia), which can be fatal.

Please consider participating. The more wells we test, the better we will understand nitrate levels in your township. Private well testing is part of the Minnesota Nitrogen Fertilizer Management Plan, a statewide strategy to address high levels of nitrate in groundwater. The Minnesota Department of Agriculture will focus future work in townships where results show that a significant number of wells contain nitrate above or near the drinking water standard of 10 mg/L (or ppm).

If you have any questions please contact  
Arlyn Gehrke & Douglas Bos • Austin DeWitte & John Shea  
Rock County Land Management Office • Nobles County Soil & Water Conservation District  
507-376-9150 Ext. 131 or Arlyn 507-283-8862 Ext. 3

**PROPOSED TOWNSHIPS FOR NITRATE TESTING IN NOBLES AND ROCK COUNTY**



**Legend**

- Community Water Supply Wells (MDH)
- Maximum Nitrate-N mg/L
  - 4.5 - 9.9
  - 10.0 - 22.0
- Non-Community > 5 Nitrate-N mg/l
- Selected Townships for Testing


0 2.5 5 10 Miles

Prepared by the Minnesota Department of Agriculture

We believe in you.™  
Member FDIC. And the community.

*BUILD YOUR Dream Home with us!*

- Purchase & Refinance  
Conventional, VA, FHA, USDA
- Construction Loans
- Home Improvement Loans
- Home Equity Line of Credit & Loans
- Second Mortgages



**Cris Oeltjenbruns**  
507-295-0540

**Lois Leuthold**  
507-295-0539

**First Farmers & Merchants**

303 East Main St. | Luverne, MN 56156 | 507-283-4463 | www.ffmbank.com



**Bridal Shower**  
**Caitlyn Stevens**  
 bride-to-be of Josh Friedrichsen  
 Friday, April 15  
 7 p.m.  
 American Reformed Church  
 Luverne, MN  
 Registered at: Target &  
 Bed, Bath & Beyond

**Card Shower Happy 75th Birthday**  
**Jan Van Eck**  
**Friday, April 8**  
 Happy Birthday Gram!  
 I love you!  
 Love Brandy  
 Greetings may be sent to:  
 1006 Linden, Luverne, MN 56156



**New Prairie Insulation, Inc.**  
 Serving Residences & Contractors  
**FREE ESTIMATES**  
**---Insulation---**  
 Arnold Brondsema  
 Beaver Creek, MN  
 507-673-2548 or  
 1-800-232-7089



**Orv & Sons, Inc.**  
 Plumbing ~ Heating ~ Cooling  
 507-967-2464  
 Office hours: M-F 7:30-noon & 1-5 ~ Sat 7:30-9 a.m.  
 \*Licensed for pump installation, sewer installation & Backhoe services  
 \*Roto-rooter, Pipe Location & Camera Inspection System  
 \*Oxyblast-water treatment Product  
 \*Lennox Furnaces & Air Conditioners  
**\*\*NOW ACCEPTING CREDIT CARDS\*\***  
 308 S. Broadway St.  
 Ellsworth, MN


**Mark's PLUMBING, HEATING AND A/C, LLC.**  
 Lic.# PC644664 Master Plumber Lic#066849-PM  
 608 W. Hatting, Luverne • Mark Kurtz, owner  
**507-283-9245**  
 A.O.Smith Water Heaters Gas & Electric  
 TEMPSTAR Heating and Cooling Products  
 MOEN Faucets

**Loans, leases, and crop insurance**  
  
 Pat Barnett  
 866-601-0506  
**AgStar**  
 Financial Services, ACA  
 AgStar.com  
 AgStar Financial Services is an equal opportunity employer and provider.

**Read Recycle Reuse**  
 Please recycle your newsprint when finished with the paper.

**Ketterling Services, Inc.**  
 401 S. Cedar St. • Luverne, MN • 507-283-2863 • www.ketterlingservicesinc.com  
 Hours: Tues.-Fri. 8:30 a.m. to Noon & 1 p.m. to 5 p.m. Sat. 8:30 a.m. to Noon  
**Roll-Off Service for Building Demo & Remodeling**  
**SANITATION:** Commercial Residential Rural  
**RECYCLING:** Collection Dropoff  
 Monthly - Weekly - Daily



**Joint Religious Legislative Coalition (JRLC) and Interfaith Children's Advocacy Network Present:**  
  
**Sex Trafficking in Minnesota**  
 April 14, 2016  
 St. Catherine's Catholic Church in Luverne  
 7 pm performance with panel discussion to follow  
 Free Admission  
 The original play **BOTTOM** tells the story of Amber Cregg, a previously prostituted young woman who cooperates with investigative authorities as they search for Coco, an eleven year-old girl who had been trafficked in northern Minnesota. As the play unfolds, the audience learns about the systemic nature of the sex trafficking industry and witnesses its psychological impact on those who become trapped within it. By citing Minnesota-specific trafficking data and casually mentioning cities where trafficking is known to occur, **BOTTOM** hits home – sex trafficking is a reality, here and now.  
 Recommended for ages 13+ due to strong language and honest content.  
 Sponsored by St. Catherine's/St. Mary's Partners for Human Concerns, St. Catherine's LCCW and JRLC

**DAVE GROEN SMALL ENGINE REPAIR**  
 "We Service all Makes and Models of Engines."  
**507-283-4299**  
 302 Main Street  
 Kenneth, MN 56147  
**TROY-BILT**  
 BUILT FOR LIFE™  
 America's #1 Tiller  
 Troy-Bilt Mowers, Tillers, Trimmers, Blowers, Log Splitters  
**COLUMBIA**  
 3 Year Warranty  
 Columbia 42"- 54" Tractors & 42"- 60" Zero Turn Mowers  
 New Heavy Duty 60" Fabricated Deck on Zero Turn Mowers!  
 Open Daily 8 a.m. to 5 p.m.



**2016'S MULES ARE HERE**  
**2016 ATVS ARE HERE**  
  
**Luverne Kawasaki**  
 Let the Good Times Roll™  
 101 W. Maple, Luverne, MN 56156  
 507-283-1800

**needsomething? (bigger apartment)**  
 try pages 6&7!  
**ANNOUNCER**  
**theclassifieds**



Don't miss a single sale!  
**Read the Announcer online**  
**www.star-herald.com**

**Here's My Card**  
 Your Quick & Easy Guide to Area Businesses



**POWER**  
 PROPERTY MAINTENANCE TECH  
 Residential & Commercial  
 Lawn Care  
 Snow Removal  
 James Mehlhaff  
 507-227-4609

**Hiding Places Dog Boarding**  
 Lonna & Todd Heideman  
 Owners  
 25773 Ahlers Avenue  
 Adrian, MN 56110  
 507-220-0990 • 507-220-0991




**State Farm**  
 David M Vetch, Agent  
 122 E Main Street  
 Luverne, MN 56156-1831  
 Bus 507 283 4401  
 www.davidvetch.com  
 david@davidvetch.com




**FRANKEN CONSTRUCTION**  
 Travis Franken, Lic #20627458 & Insured  
 1332 181st St., Luverne  
**507-920-8253**  
 Call today for a FREE ESTIMATE.  
 REMODELING • NEW ADDITIONS • SIDING  
 DECKING • WINDOW/DOOR REPLACEMENT  
 GARAGE DOORS • CONCRETE  
**NO JOB IS TOO SMALL!!!**



**Loosbrock Electrical Construction, LLC**  
 Licensed • Bonded • Insured  
 Residential • Commercial • Industrial • Agriculture  
 Scott Loosbrock  
 Owner  
 507-360-5418 • scott@loosbrockelectric.com  
 www.loosbrockelectric.com



Call us for all your residential, commercial and farm wiring needs!  
**McClure Electric**  
 Luverne, MN 507-283-4716  
 Alan M. Aanenson, owner

**H&A**  
 HEIDBRINK & ASSOCIATES  
 Farm • Home • Business • Auto • Crop • Life • Health • Long Term Care  
 heidbrinkinsurance.com  
 Luverne, MN 56156 • 507-283-4085



**MIL ELECTRIC**  
 Residential • Commercial • Farm Wiring • Trenching  
 Licensed • Bonded • Insured Mike Buss, Owner  
**507-449-8005**



**CLEVERINGA CONSTRUCTION**  
**507-920-5631**  
 • For All Your Building Needs • Additions • New or Remodel  
 www.cleveringaconstruction.com  
 Merlin Cleveringa 879 - 100th Ave., Luverne, MN  
 507-283-2698 Home Lic. # BC-20552185



**McClure**  
 PLUMBING, HEATING, AIR CONDITIONING, INC.  
 412 S. Kniss • Luverne, MN • 507-449-2828  
 Jerry Buss Lic. #002732PM  
**RAIN BIRD** Carrier  
 Troy Buss Lic. #005573PM  
**LENNOX BRADFORD WHITE**  
 SD # Luv-MN-R1117-98-1262C  
 \*Licensed, Bonded and Insured in Minnesota and South Dakota\*



**ROCK COUNTY CHIROPRACTIC**  
 • Men, Women & Children's Health  
 • Custom Orthotics • Kinesiotape • Athletic Care • Massage Therapy • Work & Auto Injuries • Postural Restoration  
 WWW.ROCKCOUNTYCHIROPRACTIC.COM  
 283-2561 • 103 E. MAIN, LUVERNE  
 Monday 7:30 a.m. - 6 p.m. • Tuesday 7:30 a.m. - 3 p.m.  
 Wednesday 7:30 a.m. - 6 p.m. • Thursday 7:30 a.m. - 1 p.m.  
 Friday 7:30 a.m. - 5 p.m.  
**Most Insurance Accepted**



**The Southwest Crisis Center has moved.**  
 114 W Main Suite 400  
 Luverne, MN  
 (Down the hall from American Family Insurance)  
 507-283-9917  
 1-800-376-4311 (24 Hour Safe Line)  
 Nobles - Rock - Pipestone - Jackson - Cottonwood

**LUVERNE HEALTH & WELLNESS**  
 Codie Zeitelhorst, DC  
 ✓ Chiropractic Care  
 ✓ Family Care ✓ Sports Injuries  
 ✓ Kinesiotape ✓ Auto & Work Injuries  
 Massage Available 5 Days A Week  
 Kris Van Der Brink M.T. & Amy Rosales M.T.  
**507.449.4400**  
 www.luvernechiro.com  
 109 S Freeman Ave, Luverne MN



**Meulebroeck, Taubert & Co., PLLP**  
 Certified Public Accountants  
 P.O. Box 685 • 109 S. Freeman • Luverne, MN 56156  
 507-283-4055  
 Experienced tax preparers with offices in Luverne, Pipestone, Marshall, Tyler & Lake Wilson  
 • Tax planning and preparation  
 • Accounting and bookkeeping services • Payroll services  
 • Quickbooks set-up and assistance  
 Dave Friedrichsen, Daryl Kanthak, Krista Kroon, Cayla Hamm, Amy Mollberg, Phyllis Vos, Janet Slieter and Lois Mulder

**Southwestern Mental Health**  
 Luverne  
 Avera Partner  
 Consulting Psychiatrist  
 Individual, Family and Group Therapy  
 Psychological Evaluation  
 Employee Assistance Program  
 Public Education  
**Crisis Hotline**  
**1-800-642-1525**  
 117 S Spring St, Luverne • 507-283-9511




**Culligan**  
 Better Water. pure and simple.™  
 water softeners • drinking water units  
**SALES • SERVICE • RENTALS**  
 Luverne, MN Hwy 75 North • Luverne Pipestone, MN  
 507-283-9105 507-825-2257



**Rock County EYE CLINIC**  
 Dr. Sandra Curman  
**507-283-2345**  
 102 N. Freeman Ave., Luverne, Minnesota



**Van Aartsen Contruction Inc.**  
 Darrel Van Aartsen, Owner  
**507-920-9499**  
 • New Home & Remodeling  
 • Commercial and Farm Buildings  
 Call for an Estimate.  
 Builder of Cashin Drive and many other beautiful homes in the area.



New Construction • Home Additions • Interior & Exterior  
 Home Remodeling • Windows • Siding • Drywall  
 30 Years Experience  
**Oehlerts & Son Construction**  
 Kevin Oehlerts, Luverne,  
 www.OehlertsAndSonConstruction.com  
**507-673-2206**



**Den Herder Construction, Inc.**  
 Jim Den Herder Cal Den Herder  
 P.O. Box 522, Luverne, MN 56156-0522  
**Phone 507-920-8917**  
 License Number 1656





## CITY OF HARDWICK ASSESSMENT NOTICE

The Board of Appeal and Equalization for Hardwick, will meet at 7:00 pm, on Tuesday, the 12th day of April, 2016, at the Hardwick City Hall. The purpose of this meeting is to determine whether property in the jurisdiction has been properly valued and classified by the assessor.

If you believe the value or classification is incorrect, please contact the assessor's office to discuss your concerns. If you disagree with the valuation or classification after discussing it with your assessor, you may appear before the local board of appeal and equalization. The board will review your assessments and may make corrections as needed. Generally, you must appeal to the local board before appealing to the county board of appeal and equalization.

Tammy J. Johnson  
Hardwick City Clerk

## Rock County Rural Water

seasonal flushing will begin  
April 11 - May 6

If you experience  
loss of pressure or discolored  
water please call the office at  
283-8886

## GRAVEL BIDS: MAGNOLIA TOWNSHIP

Magnolia Township will be accepting gravel bids for gravel to be applied on township roads. Bids may be sent by April 12, 2016.

Send to: Magnolia Township  
1581 121st St.  
Luverne, MN 56156

Magnolia Township Board

## spring sale!

**30% OFF SELECT MERCHANDISE** Kids & adult clothing - plus size and lots more!

Taking spring & summer consignments!

closet to closet  
Inc. Consignment  
200 Maine Ave., Adrian  
507-483-2050

## RED ROCK TOWNSHIP ADVERTISEMENT FOR BIDS

Red Rock Township of Minnehaha County in South Dakota will accept bids for grading, graveling, snow removal and mowing of township roads. Bids must be received by the clerk on or before April 21, 2016 and will be opened April 26 at 7:30 p.m. during the monthly board meeting. The Board of Supervisors reserves the right to reject any or all bids.

James Andersen, Township Clerk  
25913 485th Ave.  
Valley Springs, SD 57068  
Phone 605-582-3856

**Toro Walk Behind 20372**

The TimeCutter® SS5000 zero turn mower comes fully loaded with a 23 hp (16 kw) 726cc Kawasaki V-Twin engine, 50 in cutting deck, extra tall seat. Cut your mowing time in half in comfort with this top-of-the-line zero turn mower. You'll be the envy of your neighborhood. 3-Year Limited Warranty.

•22" steel deck cuts more grass in less time and improves the health of your lawn.  
•Toro's Premium OHV engine is more efficient and burns cleaner than side-valve engines.  
•The low-tone muffler keeps noise down.  
•Toro's innovative Personal Pace® self-propel system automatically senses and adapts to your walking speed.  
•With our Innovative Bag-On-Demand feature, you can switch from mulching to bagging in seconds with a flip of the quick-change lever - and the bag can stay mounted in either mode.

**TORO**  
Count on it.

**You can't go wrong when you choose a STIHL**

**FSA 65 Battery-Operated Trimmer**

- Eliminates fuel costs and exhaust emissions
- Lightweight with excellent balance and low vibration
- Up to 60 minutes of run time with the AP 160 battery
- Battery and charger sold separately
- 12" Cutting Swath

**MS 170 CHAIN SAW**

- Lightweight saw for woodcutting tasks around the home
- IntelliCarb compensating carburetor maintains RPM level, even when air filter begins to clog

**BG 55 Handheld Blower**

- Proven handheld blower at an affordable price
- Great for quickly cleaning driveways, sidewalks and hard-to-reach places

**STIHL**

## GARY'S REPAIR

Located 1/2 mile west of Luverne High School  
**STOP BY OR CALL**  
**507-283-9611**  
Gary Mann, owner - We service what we sell!

## Hills-Beaver Creek ISD #671

### EXCESS PROPERTY FOR SALE

The Hills -Beaver Creek ISD #671 Board of Education has designated the following items as excess property and directed the Superintendent to place items up for sale:

- Approximately 150 cubic yards of fill located at 301 N Summit Ave, Hills, MN
- 775 building bricks (4' X 4" X 12") leftover from the building of the 2010 Jr./Sr. High School

#### Items for Sale Description and terms:

##### Approximately 150 cubic yards of fill:

- Fill is located at 301 N Summit Ave.
- Cost of transport of fill is responsibility of winning quote.
- Transport of fill must be completed from start to finish in seven (7) business days from notification that individual was awarded fill.
- All or none. Individual must take all of fill. The district will not parcel this item.
- Perspective buyers may inspect the pile of fill by appointment. Please call Chris Harnack, Building and Ground - ph 507-962-3240 x24

##### 775 building bricks:

- 775 building bricks in two different colors - dark brown and beige.
- Transport of bricks is the responsibility of individual winning the quote.
- Transport of bricks from district site must occur within seven (7) business days from notification that individual was awarded bricks.
- All or none. Individual must take all of bricks. The district will not parcel this item.
- Perspective buyers may inspect the bricks by appointment. Please call Chris Harnack, Building and Ground - ph 507-962-3240 x24

**Procedure:** Individuals desiring to provide a quote for one or more of the above listed items may request a quote form from Glenda Kuehl, Business Manager at: [g.kuehl@isd671.net](mailto:g.kuehl@isd671.net), or interested individuals may stop by the District Office at 301 N Summit Ave, Hills, MN 56138 between 8 a.m. and 3:30 p.m. Quote submittal deadline 3 p.m. CST on Friday, April 22. Quotes must either be mailed to Glenda Kuehl, HBC Schools, PO Box 547, Hills, MN 56138 or may be hand-delivered to 301 N Summit Ave, Hills, MN 56138, Door #1. Quotes will be opened at a public Board meeting on Monday, April 25, 2016. Quotes submitted after the deadline will not be considered. The School District reserves the right to accept or reject any or all quotations in whole or part and reserves the right to waive any formalities without cause and without explanation to any bidders.

## Cigarette Outlet

### STATELINE CASINO IN ROWENA

**NO ONE CAN BEAT OUR PRICES!**

**HOURS**  
M-F 9am-9pm  
Sat-Sun 10am-10pm

INCLUDES UP TO 5 QUARTS OIL CHANGE\*  
**\$29.95** \*DIESELS EXCLUDED

**FORD SERVICE** BUY FOUR SELECT TIRES, get up to **\$120** in rebates by mail when you use the Ford Service Credit Card.

**Herman**  
LUVERNE, MN Since 1932

hermanmotor.com  
624 Kniss Ave • Luverne, MN  
507-283-4427 • 855-383-4427

FORD WILL MATCH ANY ADVERTISED PRICE

**Papik MOTORS**  
1-90 Luverne, MN

**283-9171 | PAPIK.COM**

CHEVROLET GMC CHRYSLER DODGE Jeep RAM

### 2011 Buick Lacrosse

Stock #296059N  
42K

**Papik Price \$15,990**

### 2014 Jeep Cherokee Limited

Stock #300654N  
24K

**Papik Price \$23,990**

### 2016 Buick Enclave

Stock #125854Z  
16K

**Papik Price \$38,990**

### 2012 Dodge Charger

Stock #306589N  
38K

**Papik Price \$21,990**



# Dining & Entertainment

Everyone is invited to celebrate the completion of the **HOLTKAMP PIPE ORGAN**

Sunday, April 10 | 2pm  
Church of St. Adrian  
Adrian, MN

~Dave Knips, Recitalist

512 Maine Ave, Adrian  
(elevator located on the north side of church)

## Ron & Jane Cote WITH TEQUILLA SUNRISE

**SATURDAY, APRIL 16** | 7 pm  
Doors open at 6 pm

Memorial Auditorium | 714 13th Street  
Worthington, MN



FREE CONCERT TO CELEBRATE JANE'S 60TH!

Brought to you by Lonesome Doug Productions

Old 77... Your Dell Rapids Craft Beer Head Quarters...  
Now featuring a variety of 15 tap beers. Selection Changes Weekly!



*Weekend Special*  
April 8 & 9:

**Bourbon Marinated Ribeyes**  
Choice of Potato • Choice Salad • Texas Toast

OR  
**Chicken and/or Shrimp Alfredo**  
Salad • Garlic Toast

24654 475th Ave  
Dell Rapids, SD  
**605-428-4511**  
www.old77barandgrille.com

**GOLF**  
SEASON IS HERE!

18

**A Masters of a Deal**  
**\*New members**  
receive **40%** off their golf membership plus a **\$75** gift card if paid by June 1, 2016

**\*12-month payment plan**  
also available as low as \$59 per month

**\*Application available**  
at [www.luvernecountryclub.com](http://www.luvernecountryclub.com)



**Luverne Country Club**  
507-283-4383  
Luverne, MN

## Avalon River Cruises

Save up to **\$750** per person on select 2016 Avalon Europe sailings!  
Call for more details.



8-Year Winner! Layaway & Gift Certificates Available!  
**605-339-8911 • 1-800-390-6610**  
3801 S. Western Ave., Suite 103, Sioux Falls, SD  
Open: Mon.-Fri. 8 a.m.-7 p.m. • Saturday 9 a.m.-1 p.m.  
[www.AllAboutTravel.org](http://www.AllAboutTravel.org) [www.facebook.com/AllAboutTravelInc](https://www.facebook.com/AllAboutTravelInc)  
Helping You Find Your Personal Paradise!

**NOW OPEN**

Brian's 19th Hole



**BBQ Pit & Catering**

Now taking reservations for **Mother's Day**  
Sunday, May 8

**Call today!**

507-227-0867  
110 Wall Street W  
Jasper, MN 56144  
19thholeBBQ@gmail.com

**Palace Theatre**  
Downtown Luverne



**FRI., APRIL 8 - 7 P.M.**  
**SAT., APRIL 9 - 7 P.M.**  
**SUN., APRIL 10 - 2 P.M.**

Check our web site for updates  
[www.palacetheatre.us](http://www.palacetheatre.us)  
Find us on Facebook  
PALACE THEATRE  
LUVERNE



# the classifieds

To place a classified ad in the Luverne Announcer, call 283-2333, stop by our office at 117 W. Main, Luverne, or visit [www.star-herald.com](http://www.star-herald.com).

## WANTED

Buying old cars, trucks, scrap iron, old farm equipment, tin, wire. Ericksen Salvage, Charlie Ericksen, 605-254-4654. (tc)

## WINDOWS

We custom build and install Energy Star Therm-O-Loc Windows. Call Mike at Adrian Glass for a free in-home demonstration and estimate. 101 E. Pearl, Adrian, MN 56110. 507-483-2228 or 605-770-7677 or email [mbyler@santel.net](mailto:mbyler@santel.net). (tc)

## RENTALS

For Rent: two-bedroom apartment at 125 Church Ave, Hills, MN. Call Al at 605-759-4149. (4.3-4.21)

For Rent: Nice, one-bedroom apartment with basement space. Stove and Refrigerator furnished. Call 507-283-4095 or 507-290-1948. (tc)

For Rent: Apartment in Magnolia. One-bedroom. Stove, refrigerator, washer and dryer included. Call 507-283-8593. (3.20-4.3)

For Rent: Three-bedroom farmhouse located west of Luverne. Central air, appliances included, attached two-stall garage. First, last and deposit required. No Pets. Please call 507-935-8233. (3.17-4.3)

One-bedroom apartment, upstairs, downtown. No pets, no smoking. Stove, fridge and utilities included. 507-227-1589. (tc)

## Oakwood Apartments

401 Oak St., Ellsworth

• 1 Bedroom Unit Available  
Unit Available  
Water, Sewer & Garbage Included.

Rent Based on Income  
AVAILABLE IMMEDIATELY

Van Binsbergen & Associates, Inc.  
320-269-6640 ext. 22

Equal Housing Opportunity

[www.vanblc.com](http://www.vanblc.com)



## CARDS OF THANKS

We would like to extend our gratitude for the support and remembrance of LeRoy Lindblom. Your thoughts, prayers, cards, many visits, food, and memorials were appreciated. A special thank you to Paster McCormick, Grace Lutheran Church, those who participated in the service, the Hospice Staff, Dr. Richard Morgan, as well as Hartquist Funeral Home for helping us through this difficult time. Dad truly loved the people he knew and his life in Luverne. We find peace in the message of eternal life and trust in God. Blessings to you and yours.

The Family of LeRoy Lindblom  
(4.3-4.7)

The Library staff would like to thank the community of Rock County for its patience and enthusiasm during our renovation project. We would also like to thank every business that helped create this amazing space for generations to come; the project would not have happened without your time and talents. Special thanks to Okie Honken, Library Consultants LLC, Southwest Youth Services, Nobles County Corrections, Rock County Commissioners, our Library Board, and the Friends of the Library. (4.3-4.7)

The family of Janice Ward would like to thank everyone for their thoughts, prayers, cards and memorials during this difficult time.

Wayne Ward  
And Family  
(3.31-4.3)

## RENTALS

Storage units for rent  
10x20 10x30 15x50

**Dak Storage**  
309 E Linden St  
Brandon, SD 57005  
605-359-5107

## CHILD CARE

Daycare: Licensed daycare has openings available for ages ranging from 12 months to 11 years of age. Please call 507-920-8449 for more details. (tc)

Licensed 20 years  
**Daycare Provider**  
in Hills has Fulltime openings  
2-5 year olds  
Great location  
next to park!  
Food program - Lots of TLC  
**Call Wendy**  
507-962-3407  
anytime

**Announcer Printing**  
283-2333

RECYCLE • RECYCLE • RECYCLE • RECYCLE

## SERVICES

For Sale: Yard dirt, landscaping, rock, gravel sand. Also do tree stump grinding. Call Wayne Biever 507-227-4521 or 507-283-4614. (3.17-4.3)

**ELECTROLUX**  
Central Vacuums • Upright Vacuums  
Canister Vacuums  
Sales - Service - Supplies  
**ELAINE BOLT**  
507-442-7721 Edgerton, MN

**USED PARTS**  
Everything You Need  
BUMPER to BUMPER  
BRING YOUR TOOLS  
PULL YOUR PARTS  
GRAB & GO  
AUTO SALVAGE, LLC  
220 10th Ave. S.E.  
Spencer, IA  
712-580-2886  
We Buy Cars

**Tree Tech Inc.**  
Luverne, MN  
507-283-8552  
507-920-6424 cell  
tree removal  
tree trimming  
stump grinding  
tree moving

**Schomacker Tire Repair**  
Jason Schomacker  
2090 150th Avenue  
Hardwick, MN 56134  
507.220.2080  
On location tire repair  
24 hours - 7 days a week

## MISCELLANEOUS

HAVE A UNIQUE SERVICE OR BUSINESS? Get the word out to over 1.4 million households. Call WIDE AREA CLASSIFIEDS today, 507-359-7326. (tc)

**CASHFORCARS.COM**  
Looking to sell your vehicle fast?  
Get a competitive offer and free towing nationwide.  
**888-524-9668**

**Reach More People**  
when you place your ad in our classified section!

- It's easy: call 283-2333 or go online at [star-herald.com](http://star-herald.com) to purchase
- Purchase 2 weeks and get the 3rd week FREE!
- FREE online ads with every print purchase

## CADNET NATIONAL ADVERTISING NETWORK

### AUTOS WANTED

A-1 DONATE YOUR CAR FOR BREAST CANCER! Help United Breast Foundation education, prevention, & support programs. FAST FREE PICKUP - 24 HR RESPONSE - TAX DEDUCTION 855-403-0213

### EMPLOYMENT

US Postal Service Now Hiring. 1-800-269-9731 \$21/hr avg. w/ Fed. Ben. incl. to start. FT/PT. Not affiliated w/ USPS. Place in Health & Fitness

Lung Cancer? And Age 60+? You And Your Family May Be Entitled To Significant Cash Award. Call 877-265-1956 for Information. No Risk. No Money Out Of Pocket

VIAGRA 100MG and CIALIS 20mg! 50 Pills \$99.00 FREE Shipping! 100% guaranteed.

CALL NOW! 1-866-312-6061

VIAGRA 100mg, CIALIS 20mg. 60 tabs \$99 includes FREE SHIPPING. 1-888-836-0780 or [www.metrodeds.online](http://www.metrodeds.online)

\*\*SPRING SPECIAL\*\* VIAGRA 60x (100 mg) +20 "Bonus" PILLS for ONLY \$114.00 plus shipping. VISA/ MC payment. 1-888-386-8074 [www.newhealthyman.com](http://www.newhealthyman.com) Satisfaction Guaranteed!!

### MISC. FOR SALE

KILL BED BUGS! Buy Harris Bed Bug Killers/ KIT. Hardware Stores, The Home Depot, homedepot.com

### WANTED TO BUY

CASH PAID- up to \$25/Box for unexpired, sealed DIABETIC TEST STRIPS. 1-DAYPAY-

MENT-1-800-371-1136

Wants to purchase minerals and other oil and gas interests. Send details to P.O. Box 13557 Denver, CO. 80201

### MISCELLANEOUS

AVIATION Grads work with JetBlue, Boeing, Delta and others- start here with hands on training for FAA certification. Financial aid if qualified. Call Aviation Institute of Maintenance 866-453-6204

Make a Connection. Real People, Flirty Chat. Meet singles right now! Call LiveLinks. Try it FREE. Call NOW: 1-888-909-9905 18+

ADVERTISE to 10 Million Homes across the USA! Place your ad in over 140 community newspapers, with circulation totaling over 10 million homes. Contact Independent Free Papers of America IFPA at [danielburnett-ifpa@live.com](mailto:danielburnett-ifpa@live.com) or visit our website [cadnetads.com](http://cadnetads.com) for more information

Reader Advisory: The National Trade Association we belong to has purchased the above classifieds. Determining the value of their service or product is advised by this publication. In order to avoid misunderstandings, some advertisers do not offer employment but rather supply the readers with manuals, directories and other materials designed to help their clients establish mail order selling and other businesses at home. Under NO circumstance should you send any money in advance or give the client your checking, license ID, or credit card numbers. Also beware of ads that claim to guarantee loans regardless of credit and note that if a credit repair company does business only over the phone it is illegal to request any money before delivering its service. All funds are based in US dollars. Toll free numbers may or may not reach Canada.

**Damax Apartments**  
Rental Assistance Available  
602 E. Warren St, Luverne, MN  
Inquire about move-in specials  
Accepting all income levels  
1 & 2 Bedrooms  
Newly Remodeled

Van Binsbergen & Associates, Inc.  
320-269-6640 ext. #22  
[www.vanblc.com](http://www.vanblc.com)

**BLUE MOUND TOWER**  
Luverne HRA • Blue Mound Tower  
216 McKenzie Street  
Luverne, MN 56156  
507-283-4922

Apartments available!

- All Ages Welcome
- Close to Senior Dining
- Close to Minnesota West College
- Income Based
- Handicap Accessible
- Pet Friendly
- Smoke Free
- Secure Entry System
- On Site Laundry
- Utilities included

**EMPLOYMENT/HELP WANTED**  
TEAM DRIVER WANTED: Dedicated run from St. Paul, Minnesota to Oakwood, Illinois. Tuesdays through Saturdays. Competitive Wage. CDL required. Call 563-580-6648 (MCN)

**AUTOMOBILES/MOTORCYCLES WANTED**  
MOTORCYCLES: TOP CASH PAID! For Old Motorcycles! 1900-1980. DEAD OR ALIVE! 920-371-0494 (MCN)

**ADOPTION**  
\*ADOPTION\*: Happily Married, Successful Executive & Stay-Home-Mom yearn for baby to devote our lives to. Expenses paid 1-800-933-1975 "Susan & Gavin" (MCN)

A UNIQUE ADOPTIONS, LET US HELP! Personalized Adoption Plans. Financial Assistance, Housing, Relocation and More. Giving the Gift of Life? You Deserve the Best. 1-888-637-8200. 24HR Hotline. (VOID IN IL) (MCN)

**FOR SALE**  
TRAILER SALE: 14,000 lb. skidloader trailers 18' to 28' \$3,699.00; Fuel tank trailers; Scissor lift trailers; 11 choices of DUMP trailers; 6'x12' V-nose ramp door \$2,789.00; 7'x16' V-nose ramp door \$4,093.00; 2012 John Deere 3032E compact tractor & loader; Full line of trailer parts in-stock; 515-972-4554 [www.FordDodgeTrailerWorld.com](http://www.FordDodgeTrailerWorld.com) for prices & inventory & pictures. (MCN)

\*SALE\* Self Storage Buildings \*SALE\* No Better Time To Add On To Your Existing Facility. Or To Start Up Your New Facility. All Buildings On Sale Now For Limited Time. Order Now For Early Delivery! ABCO-America Inc. Call 844-636-5335 (M-F 8am-6pm Eastern) (MCN)

**FARM RELATED**  
Our Hunters will Pay Top \$\$\$ To hunt your land. Call for a Free Base Camp Leasing info packet & Quote. 1-866-309-1507 [www.BaseCampLeasing.com](http://www.BaseCampLeasing.com) (MCN)

**EMPLOYMENT/HELP WANTED**  
CLASS A CDL Driver. Good home time. Stay in the Midwest. Great pay and benefits. Match-

ing 401k. Bonuses and tax free money. Experience needed. Call Scott 507-437-9905. Apply on-line <http://www.mctgt.com> (MCN)

OWNER OPERATORS wanted. Paid all miles. No touch freight. Many operating discounts. Family run business for 75 years. Many bonuses and good home time. Direct deposit paid weekly. Call 800-533-0564 ext.205. (MCN)

MAKE \$1000 Weekly!! Mailing Brochures from Home. Helping home workers since 2001. No Experience Required. Start Immediately! [www.centralmailing.net](http://www.centralmailing.net) (VOID IN SD, WI) (MCN)

MAKE \$1,000 WEEKLY! Paid in advance! Mailing Brochures at Home! Easy pleasant work. Begin immediately! Age unimportant! [www.MyHomeIncomeNow55.com](http://www.MyHomeIncomeNow55.com) (MCN)

US Postal Service Now Hiring 1-800-255-4134 \$21/hr. avg. w/ Federal Benefits included to start. FT/PT. Not affiliated w/USPS (MCN)

**HEALTH & MEDICAL**  
CASH PAID for unexpired, sealed DIABETIC TEST STRIPS! 1 DAY PAYMENT & PREPAID shipping. HIGHEST PRICES! Call 1-888-389-0695. [www.cash4diabeticssupplies.com](http://www.cash4diabeticssupplies.com) (MCN)

Viagra!! 52 Pills for Only \$99.00! Your #1 trusted provider for 10 years. Insured and Guaranteed Delivery. Call today 1-888-403-7751 (MCN)

VIAGRA 100mg, CIALIS 20mg. 60 tabs \$99 includes FREE SHIPPING. 1-888-836-0780 or [www.metrodeds.online](http://www.metrodeds.online) (MCN)

AS SEEN ON TV: Burn fat quickly & effectively with Garcinia Cambogia. Blocks fat. Suppresses your appetite. Safe - 100% natural. Satisfaction Guaranteed! Free bottle with select packages! 844-587-6487 (MCN)

Stop OVERPAYING for your prescriptions! Save up to 93%! Call our licensed Canadian and International pharmacy service to compare prices and get \$15.00 off your first prescription and FREE Shipping. 1-800-263-4059. (MCN)

Got Knee Pain? Back Pain? Shoulder Pain?

Get a pain-relieving brace at little or NO cost to you. Medicare Patients Call Health Hotline Now! 1- 800-604-2613 (MCN)

ATTENTION: VIAGRA AND CIALIS USERS! A cheaper alternative to high drug-store prices! 50 Pill Special - \$99 FREE Shipping! 100 Percent Guaranteed. Call NOW: 1-800-795-9687 (MCN)

**AUTOMOBILES**  
DONATE YOUR CAR TO CHARITY. Receive maximum value of write off for your taxes. Running or not! All conditions accepted. Free pickup. Call for details. 855-752-6680 (MCN)

DONATE YOUR CAR, TRUCK OR BOAT TO HERITAGE FOR THE BLIND. Free 3 Day Vacation, Tax Deductible, Free Towing, All Paperwork Taken Care Of. 1-800-283-0205 (MCN)

**MISCELLANEOUS**  
\$14.99 SATELLITE TV. Includes free installation. High speed internet for less than \$50 a day. Low cost guarantee. Ask about our FREE IPAD with Dish Network. Call today 1-855-331-6646 (Not available in NE) (MCN)

DISH NETWORK - \$19 Special, includes FREE Premium Movie Channels (HBO, Showtime, Cinemax, and Starz) and Blockbuster at home for 3 months. Free installation and equipment. Call NOW! 1-866-820-4030 (MCN)

Free Pills! Viagra!! Call today to find out how to get your free Pills! Price too low to Mention! Call today 1-877-560-0997 (MCN)

SAVE on internet and TV bundles! Order the best exclusive cable and satellite deals in your area! If eligible, get up to \$300 in Visa Gift Cards. CALL NOW! 1-800-925-0146 (MCN)

Life Alert. 24/7. One press of a button sends help FAST! Medical, Fire, Burglar. Even if you can't reach a phone! FREE Brochure. CALL 800-306-1404 (MCN)

DISH TV 190 channels plus Highspeed Internet Only \$49.94/mo! Ask about a 3 year

price guarantee & get Netflix included for 1 year! Call Today 1-800-390-3140 (MCN)

ALL THINGS BASEMENT! Basement Systems Inc. Call us for all of your basement needs! Waterproofing, Finishing, Structural Repairs, Humidity and Mold Control. FREE ESTIMATES! Call 1-800-640-8195 (MCN)

A PLACE FOR MOM. The nation's largest senior living referral service. Contact our trusted, local experts today! Our service is FREE/ no obligation. Call 1-800-442-5148 (MCN)

Switch to DIRECTV and get a \$100 Gift Card. FREE Whole-Home Genie HD/DVR upgrade. Starting at \$19.99/mo. New Customers Only. Don't settle for cable. Call Now 1-800-203-4378 (MCN)

19.99/mo. for DIRECTV - HD Channels + Genie HD DVR + 3 months FREE HBO, SHOW, MAX & STARZ + FREE NFL Sunday Ticket! Call Now 1-888-552-7314 (MCN)

ADT Security protects your home & family from "what if" scenarios. Fire, flood, burglary or carbon monoxide. ADT provides 24/7 security. Don't wait! Call Now! 1-888-607-9294 (MCN)

GET HELP NOW! One Button Senior Medical Alert. Falls, Fires & Emergencies happen. 24/7 Protection. Only \$14.99/mo. Call NOW 1-888-840-7541 (MCN)

**PERSONALS**  
MEET SINGLES RIGHT NOW! No paid operators, just real people like you. Browse greetings, exchange messages and connect live. Try it free. Call now: 800-357-4970 (MCN)

**FINANCIAL**  
Are you in BIG trouble with the IRS? Stop wage & bank levies, liens & audits, unfiled tax returns, payroll issues, & resolve tax debt FAST. Call 888-606-6673 (MCN)

STUDENT LOAN PAYMENTS got you down? We can help reduce payments and get finances under control, call: 866-871-1626 (MCN)



# the classifieds

To place a classified ad in the Luverne Announcer, call 283-2333, stop by our office at 117 W. Main, Luverne, or visit [www.star-herald.com](http://www.star-herald.com).

**EMPLOYMENT**

**HELP WANTED**

Age 55+ workers needed for **part-time custodial work** at the Adrian rest area.

Contact Green View  
**651-639-1913**

**EMPLOYMENT**

**SON-D-FARMS ADRIAN**

is hiring General Farm, Hog, Field Work, Truck Driver, Maintenance person, Farm Shop Mechanic & Farm Delivery Person. Experience wanted but willing to train. PTO benefits. Call (507) 483-2245, 370-1590 or e-mail [jessihoffman@sondfarms.com](mailto:jessihoffman@sondfarms.com)

**EMPLOYMENT**

**HELP WANTED**

**Spanish Teacher • English Teacher**

Southwest MN Christian High School, located in Edgerton, MN, is seeking a part-time Spanish and English teacher for the 2016-17 school year. These are two part-time positions. Candidates that would be able to fill both of these positions could be considered for a full time position.

**APPLICATIONS ARE DUE FRIDAY, APRIL 15.**

Applications are available online ([www.swmch.org](http://www.swmch.org)) or by contacting Darrel Ulferts, principal: (507) 442-4471 or [dulferts@swmch.org](mailto:dulferts@swmch.org)

**EMPLOYMENT**

**HELP WANTED**

Cook/Dietary Aide: Part-time 12-7 p.m.. Wages \$11.50. MN PERA retirement plan. Contact Mike Werner at Parkview Manor, 308 Sherman Ave., Ellsworth, Mn 56129 or call 507-967-2482. (3.31-4.17)

**EMPLOYMENT**

We are a small custom cabinet shop near Hills, MN and are looking for professionals to join our close knit team. We serve Sioux Falls and the surrounding area. Applications are being taken for cabinet making, finishing, assembly, and delivery. A combination of these is desired but not required. If you are punctual, experienced, and have the desire to excel in this craft, please apply! Contact Dennis or Tim at 507-962-3105. (tc)

**HELP WANTED**

**Resident Manager**

Now accepting resumes for a part-time (up to 20 hours per week) site manager at Stonecreek Townhomes in Luverne. Will work with Regional Property Manager and Maintenance Staff to manage the office. **Duties include:** processing applications and certifications, and handling resident relations and concerns. Position has a very flexible schedule.

Send resume to: Steve Weisbecker  
Lloyd Management, Inc.  
P.O. Box 1000 | Mankato, MN 56002  
or [sweisbecker@lloydmanagementinc.com](mailto:sweisbecker@lloydmanagementinc.com)  
Equal Opportunity Employer

**HELP WANTED**

Edgerton Public School will have the following openings for the 2016-2017 school year:

- HS/MS Language Arts
- Band Instructor
- HS/MS Science Teacher
- Elem. Spec. Ed
- Agriculture/Industrial Tech Teacher

Interested candidates may send cover letter, resume, and 3 letters of reference to:

**EDGERTON PUBLIC SCHOOL**  
Dawn Sandbulte, Business Manager  
PO Box 28 Edgerton, Mn 56128

**HELP WANTED**

Design Craft of Luverne, Inc. **YOUR LOCAL Commercial Construction Contractor** is looking for **construction laborers and experienced carpenters** for immediate employment. Stop in at our office at 904 Commerce Road and fill out an application. Phone 507-283-2600. Labor rates \$12-15/hr, experienced carpenters \$15/20 DOQ.

**CONSTRUCTION LABORERS NEEDED IMMEDIATELY**

- Wage is Negotiable
- Full Time Year Round Employment
- Must Have a VALID Drivers License or ID
- Benefit Package Available
- Mandatory Pre-Emp. Drug Screening

**ARS**  
Architectural Roofing & Sheetmetal, Inc.  
**605-332-1698**  
[www.arsinc-roofing.com](http://www.arsinc-roofing.com)

Wildrose Home Care is accepting applications for home health aids/ personal care attendants to work in Pipestone. Day, evening, and night shifts available. Cares would include assisting client in home with activities of daily living such as dressing, bathing, and grooming. Willing to train. Applications may be picked up at 1210 East College Drive in Marshall or call 1-507-337-1101. (3.27-4.21)

**L. G. Everist, Inc.**, a highly reputable producer of construction aggregates, is seeking a **general laborer** for their operations in Jasper, MN.

All new employees must pass a drug test. We offer a strong salary and benefits package and a very positive family orientated work atmosphere. Construction experience is helpful but not required.

Apply in person at 309 S Sherman Jasper MN, call 605-334-5000 or email [hr@lgeverist.com](mailto:hr@lgeverist.com).

FamilyU, Luverne's School Aged Child Care Program, is seeking applicants for a Child Care Assistant for Summer 2016. Qualified candidates must be a high school sophomore or older, have experience working with K-5 children, and demonstrate positive behavior management skills. Weekday hours vary from 15-40 hours per week, May 16 through August 26. Apply at Luverne Community Education, 709 N. Kniss Ave, Luverne. Application deadline is April 15. EOE (3.24-4.7)

Registered Nurse/LPN-Parkview Manor, a municipal skilled nursing facility is accepting applications for a part-time charge nurse position. Wages commensurate with experience. \$2000 scholarship available for students. Benefits include vacation, holiday, and PERA retirement plan. Contact Darnell Krull 308 Sherman Ave., Ellsworth, Mn 56129 or call 507-967-2482 (tc)

**LOOSBROCK DIGGING SERVICE INC.**  
Lismore, MN • 507-472-8448

**HELP WANTED**

We are a Southwestern Minnesota Cable Contractor company that works in the Tri-state area, including Southeastern South Dakota, Northwestern Iowa, and Southwestern Minnesota. We are home most nights. Some travel is required with compensation. We are looking for Plow Operators, Backhoe Operators, Directional Drill Operators, and Laborers. Wages start at \$15 per hour for laborers and \$17 per hour for operators. Previous experience is preferred, but not required. Training will be provided for the right candidate. A valid driver's license and CDL (or potential to obtain CDL) is required. If interested in the position, please send resume to: [lsdinc@lismoretele.com](mailto:lsdinc@lismoretele.com). You can call 507-472-8448 with questions. You can also visit our website at [www.loosbrock.com](http://www.loosbrock.com) to learn more about our company and to download an application. We offer Health Reimbursement, Short-term and Long-term Disability Insurance, Per Diem and 401(k) benefits.

**GREAT JOBS ARE OUT THERE FIND YOURS HERE!**

Pipestone System is hiring for **FULL TIME SWINE TECHNICIANS** at our locations in the George, IA area.

Pipestone System offers an excellent compensation & benefit package:

- ▶ Competitive Wages - based on position and experience
- ▶ 401k Retirement Plan
- ▶ Life and Long Term Disability Insurance
- ▶ HEALTH & DENTAL COVERAGE
- ▶ Paid Holidays and PTO Scholarship Programs
- ▶ Production Bonus
- ▶ Pork Program
- ▶ Flex Plan

**PIPESTONE**  
SYSTEM

If you or someone you know is interested in these opportunities, contact Pipestone System today: Apply online at [www.pipestonesystem.com](http://www.pipestonesystem.com) or call 1.866.918.7378

Southwestern Youth Services in Magnolia, MN is hiring Night Supervisors (11 pm-7 am) to work with male juveniles in a residential setting. Part time, and/or Full-time, \$11.50-\$12.00/hr (or based on education), benefits, pd. holidays, overnight shifts. Must be 21 yrs old and have high school diploma. Send application or resume to PO Box 40 Magnolia, MN 56158 or stop by for an application. For further information contact Don or Jeremy at 507-283-4425. (3.24-4.11)

Nursing Assistant-Parkview Manor has openings for full-time nurse aides with benefits to include: health insurance, public retirement plan, and holiday pay. Part-time positions also available. New Wages \$11.90/hr. \$2000 scholarships available for students. Will provide training or pay for experience. Contact Darnell Krull, 308 Sherman Ave., Ellsworth, MN 56129 or call (507) 967-2388. (tc)

*Interested in Advertising?*

Call **Rick or Chantel** to advertise in the Announcer

**283-2333**

**ACCOUNTANT**

**OBJECTIVE:** Responsible for the daily functions of multiple accounts including but not limited to A/P, A/R, invoicing, purchase orders, journal entries, bank reconciliations, account reconciliations, and financial reports.

**ESSENTIAL FUNCTIONS**

- Obtain and maintain a thorough understanding of general ledger structure.
- Process A/P and A/R transactions
- Attention to detail
- Maintain sales order and purchase order system
- Understanding of financial reports and preparation of those reports
- Maintain depreciation schedules
- Prepare monthly, quarterly, and year end close information for internal and external users
- Ability to work in a team atmosphere
- Correspond with other managers as questions arise

**POSITION SPECIFICATIONS**

**Education:**

- 2 or 4 year degree in accounting

**Experience:**

- 2+ years preferred
- Must be PC proficient and able to thrive in a fast-paced setting with strong experience with Microsoft Excel.
- Ability to multi-task, work under pressure and meet deadlines required.

**PIPESTONE**  
WWW.PIPESTONESYSTEM.COM

Apply today online at [www.pipestonesystem.com](http://www.pipestonesystem.com) or call Human Resources at 507-825-2532. Pre-employment drug testing and background screening required.

**AM**  
AVIATION INSTITUTE OF MAINTENANCE

**AIRLINE CAREERS**

Get FAA approved maintenance training at campuses coast to coast. Job placement assistance. Financial Aid for qualifying students. Military friendly.

Call Aviation Institute of Maintenance  
**800-481-7894**

**News for all ages.**  
[www.star-herald.com](http://www.star-herald.com)

**The Star Herald Nose**

[www.star-herald.com](http://www.star-herald.com)



# SUPPORTING A STRONG FARM ECONOMY



The Luverne Farm Store is a proud supporter of all our local swine producers. We continue to focus our efforts toward bringing new technology in Feed Premixes, Animal Health Products, Advancing Barn Efficiencies, and Livestock Marketing to our local producers. The Luverne Farm Store applauds the efforts of all area farmers in utilizing local livestock manure as an innovative method of fertilization. We look forward to providing more value-added services to local farmers, as we all work to protect our environment and strengthen our local farming economy.

## A Feed for any need!



*Over 50 years of providing many quality products with outstanding customer service.*

**Thank You!**

***We thank all of our customers for their business & support. It will be our pleasure to again work with all of you in the months ahead. We look forward to serving you during this upcoming spring season.***

Since 1948

**LUVERNE FARM STORE**

Quality & Service

**S. Highway 75 • Luverne, MN  
507-283-9555 • 1-800-956-9556**

[www.luvernefarmstore.com](http://www.luvernefarmstore.com)



**Weed /n./**

- Any undesirable or troublesome plant, especially one that grows profusely where it is not wanted

**Pick a winner with Star-Herald.com**



# THANK YOU



Big Buddies



BackPack Program



Historical Society



Tuff Home



Mary Jane Brown Home



Bookin' Buddies



Hills School



Luverne VFW & American Legion



Tuff Memorial Home



Hills School



Luverne School



Senior Dining

## Thank You

to all our  
volunteers  
throughout  
the years

### County Day Proclamation Rock County

Rock County was served by four AmeriCorps State members, three Senior Corps SCP members, two Senior Corps FGP members and 369 Senior Corps RSVP volunteers in 2015. The Senior Corps RSVP volunteers perform their volunteer service work under the guidance of A.C.E. of SW Minnesota - Rock County office. These volunteers provide vital support to county residents and improve the quality of life in Rock County.

Therefore, be it resolved, that, HBC School, Luverne School, City of Luverne and Rock County, do hereby proclaim April 5, 2016 as National Service Recognition Day, and encourage residents to recognize the positive impact of National Service programs in our county, to thank those who serve; and to find ways to give back to our communities.

American Red Cross - Rock County  
American Reformed Church  
ATLAS-Rock Co/Redeemed Remnants  
Big Buddies-Luverne  
Blue Mound Area Theatre (BMAT)  
Bookin' Buddies  
Centennial Apartments

Coffee Break  
Community Ed/ECFE - Luverne  
ESL-Luverne  
First Presbyterian Quilters  
Food Shelf - Rock County  
Friendship Class  
Grace Quilters

Herreid Military Museum  
Hills Christian School  
Hills Senior Citizens  
Hills-Beaver Creek School  
Hinkly House/Historical Society  
Home Delivered Meals Program - Luverne  
LIFT (Luverne Initiative for Tomorrow)

Luverne American Legion & Auxiliary  
Luverne Backpack Program/Second Harvest Program  
Luverne Chamber of Commerce  
Luverne Lions Club  
Luverne School  
Luverne Senior Center  
Luverne Senior Dining

Luverne Street Music  
Luverne Tax And Insurance Service  
Mary Jane Brown Good Samaritan  
Minnesota Veterans Home  
New Life Celebration Church-Food Mission  
Pink Ladies of Sanford Luverne Med Ctr  
Poplar Creek & Oaks

Red Arrow  
Rock Co. A.C.E. Quilters  
Rock Co A.C.E. Advisory Council  
Rock Co Extension Office  
Rock Co Heartland Express  
Rock Co Historical Society  
Rock Co NAPS Program

Rock Co VFW & Auxiliary  
RSVP Bone Builders - Luverne Sr Ctr  
RSVP Bone Builders - Poplar Creek/Oaks  
RSVP Bone Builders - Tuff Village  
Sanford Luverne Hospice/Home Care  
Sanford Medical Center-Luverne  
Southwest Crisis Center

St. Catherine's Sewing Center  
St. John's Lutheran Church  
Sunrise Village  
Tuff Memorial Nursing Home  
Tuff Village  
Zion Quilters

Thank You