

# A Luverne ANNOUNCER

117 West Main St. • Luverne, MN 56156-0837 • Phone 507-283-2333 • Address Service Requested

PRSR STD  
U.S. POSTAGE  
PAID  
Permit No. 22  
Page 1 Printers  
Postal Customer

VOLUME 87 NUMBER 14

ROCK COUNTY'S FREE CIRCULATION PUBLICATION SINCE 1931

April 2, 2017

## Community Update

### Meetings

**The Blue Mound Quilters** will meet at 6:30 p.m. Monday, April 3, at the Rock County Library. Mary Crawford will be in charge of the program. All quilters are welcome.

**Pink Ladies** of Sanford Luverne Hospital will meet at noon Monday, April 10, in the Blue Mound Room for a potluck salad luncheon and regular meeting. Bring eating utensils.

**Pleasant View Cemetery Association** annual meeting will be at 7 p.m. Monday, April 3, at the home of Richard and Ruth Opsata. Call Janice Nuffer at 507-855-2266.

**American Legion Post 123 and Auxiliary** will meet at 7:30 p.m. Wednesday, April 12, in the Post home.

**Meditation and Mindfulness Practice** will meet from 7-7:45 p.m. April 12 and 26 (every second and fourth Wednesday) in the lower level of Hilger Commons at 215 N. Cedar Street in Luverne. All are welcome. For more information call Kim at 507-353-0041 or email kimberlyelizabeth@live.com.

**Hardwick Goal Seekers** meet every Monday in Hardwick City Hall for the purpose of support and encouragement for weight loss journeys. Weigh-in begins at 6 p.m., and the meeting starts at 6:30 p.m. Call Glenda, 449-0568, with questions.

**Narcotics Anonymous** will meet every Thursday evening at 6:30 p.m. at the Steen Reformed Church. Contact Robert for more information 507-329-2642.

**Women's Alcoholics Anonymous** meets at 8 p.m. Mondays in the United Methodist Church.

**Al-Anon** meets from 6:30 to 7:30 p.m. Wednesdays in Sanford Luverne. Call Stephanie at 507-449-1246.

**Narcotics Anonymous** meets at 7 p.m. Fridays and for basic text study at 7:30 p.m. Tuesdays in St. Catherine Rectory, Luverne. Use east door. Call 507-220-0137.

**Alcoholics Anonymous** meets at 8 p.m. Wednesdays and Saturdays in the United Methodist Church, Luverne. Call 605-321-4324.

**Alcoholics Anonymous and Al-Anon** meet from 8 to 9 p.m. Tuesdays in Runals Hall, Edgerton. Call Naomi, 507-215-

### Grief support begins April 3

Sanford Luverne Hospice will offer a five-week grief support group for anyone grieving the loss of a loved one. Meetings are from 5-6:30 p.m. every Monday for five weeks beginning April 3 at Sanford Luverne. Meetings are free and confidential. Call Jill Roemen at 507-283-1805 to register.

### History Center open 10 a.m.-4 p.m.

The new History Center on East Main Street in Luverne will be open regularly from 10 a.m. to 4 p.m. Tuesday through Saturday. Call 283-2122 with questions.

### American Red Cross blood drive April 3

The American Red Cross will host a blood drive at Grace Lutheran Church from 1-7 p.m. Monday, April 3. Visit redcross-blood.org or call 800-733-2767. A blood donor card or driver's license or two other forms of identification are required.

### Bank Night movie 'Sing' April 6

The free Bank Nite movie, "Sing," rated PG, will begin at 6 p.m. Thursday, April 6, at the Palace Theatre in Luverne. Sponsored by First Farmers & Merchants National Bank and Papik Motors, a free, family-friendly movie is shown on the first Thursday of every month as it was done for "Bank Nite" in the 1930s.

### MJB hosts Easter egg hunt April 8

Good Samaritan Society Mary Jane Brown Home in Luverne invites all children up to 8 years old to join in an Easter egg hunt at 10 a.m. Saturday, April 8, and to have their picture taken with the Easter Bunny. For more information call 507-283-2375.

### 'Little Outhouse on the Prairie' April 11

Jim Oliver of Puppetater Productions will present the puppet show "Little Outhouse on the Prairie," at 10 a.m. Tuesday, April 11, at the Rock County Community Library. This event is sponsored by The Friends of the Rock County Library in recognition of National Library Week. It's free and open to all ages.

### Zumba 'Spring into Fitness' April 12

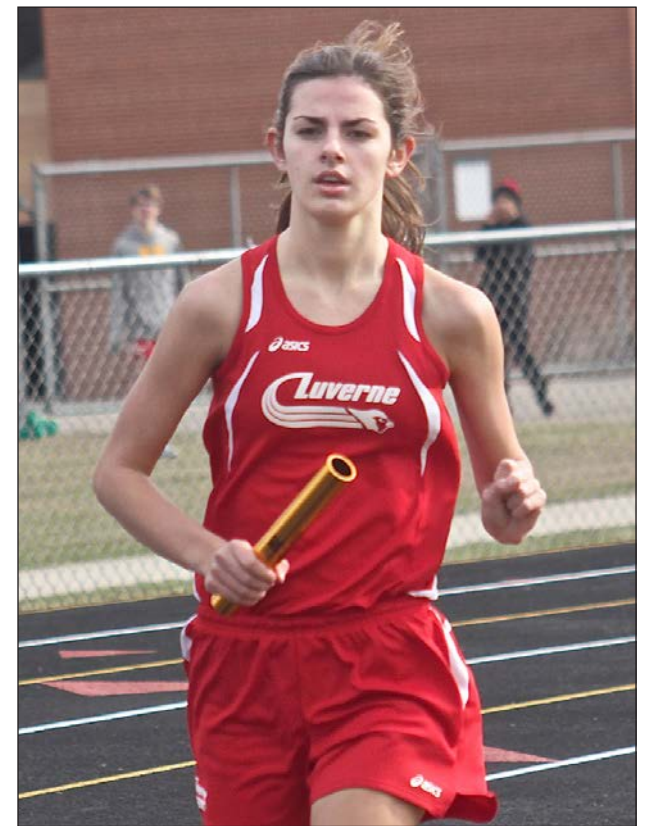
A "Spring into Fitness" zumba party will be at 5:30 p.m. Wednesday, April 12, at the City Centre Apartments. Cost is \$1. Contact Janelle Conklin at raymondandjanelle@gmail.com.

### Shrine Circus tickets available for free

Local businesses are sponsoring free Shrine Circus tickets for area children at the following locations: Teal's Market, Teal's Food and Gas, Minnwest Bank on Main Street and Kniss Avenue, First Farmers & Merchants Bank, Exchange State Bank, Pizza Ranch and at the April 6 Bank Nite Movie at the Palace. The Shrine Circus is April 20-23. Call, 507-920-7055, with questions.

## Rock County STAR HERALD

Coming this week in the Rock County Star Herald



John Rittenhouse photo/0406 lhs track 1

### Spring debut

Gabrielle Ferrell and the Luverne Cardinal track teams opened the 2017 season by hosting Hills-Beaver Creek, Adrian and Westbrook-Walnut Grove-Red Rock Central for the first Luverne Meet Tuesday. Find out how the athletes from Luverne, Adrian and H-BC fared during the meet and look for the annual Spring Sports Preview that can be found inside Thursday's edition of the Star Herald.

# Spring Cleaning Sale

# DEBOER

## EDGERTON

507-442-4341



2017 CHEVROLET SILVERADO 1500 LTZ, SPORT PKG, BOSE, HT/CL LTR #1731



2016 CHEVROLET MALIBU PREMIER, NAV, BOSE #16143



2017 CHEVROLET SILVERADO 1500 LTZ, Z71, BOSE, NAV, HT/CL LTR #1745



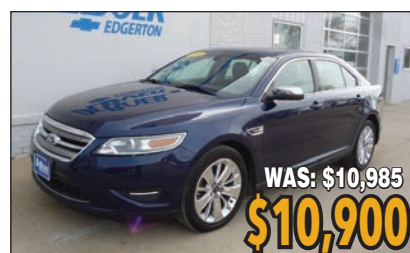
2017 CHEVROLET SILVERADO 1500 LT, ALL STAR PKG, HTD SEATS #1704



2017 CHEVROLET MALIBU PREMIER #17106



2016 CHEVROLET MALIBU LT2, 1.5T, SUN & WHEELS PKG, 9K #1758A



2011 FORD TAURUS LIMITED, AWD, LEATHER, 128K #1678C



2014 CHEVROLET IMPALA LTZ, SUN ROOF, HTD LTR, 44K #1744A



2004 CHEVROLET SILVERADO 1500 LS, ALUMINUM WHEELS, 193K #A1620B



2011 MINI COOPER HARDTOP CLUBMAN, LTR, SUNRF, 45MPG, 69K #1706B



2006 CHEVROLET SILVERADO 2500HD LT1, DURAMAX, HEAVY DUTY, 121K #1699C



2003 FORD F-150 LARIAT, HTD LEATHER, 151K #16127M



2006 CHEVROLET SILVERADO 3500HD LT, DURAMAX DIESEL, 224K #1692A



2013 CHEVROLET EQUINOX LTZ, SUNROOF, 47K #A1621A



2015 CHEVROLET SILVERADO 2500HD LTZ, DURAMAX, BOSE, 26K #1698A



2004 GMC SIERRA 2500HD SLE, DURAMAX, BOSE, 217K #C16COA



2016 CHEVROLET IMPALA LTZ, V6, ALUM WHEELS, 16K #A1630



2008 CHEVROLET SILVERADO 3500HD LT, UTILITY BOX, 160K #16115A



2007 CADILLAC ESCALADE ESV, DVD SURROUND, 146K #1618B



2008 CHEVROLET AVALANCHE LTZ, SUNROOF, NAV, DVD, BOSE, 95K #15169A

**GM Certified USED VEHICLES**

CHEVROLET SILVERADO

**Auto Check**  
vehicle history reports

[www.deboerchev.com](http://www.deboerchev.com)

## Large Morning 3-party PUBLIC AUCTION

2014 Golf Cart, 1992 Pontiac Bonneville, 1980 Chevy 4 X 4 Pickup, Antiques, Collectibles, Appliances, Furniture, Household, Tool, Outdoor Items & Misc.

**Saturday April 8, 2017 10:30 am**  
American Legion Building Hills, MN

**APPLIANCES, FURNITURE & HOUSEHOLD:** Frigidaire Ref / freezer; Frigidaire small chest freezer; Frigidaire elect stove; Frigidaire washer & dryer; Kenmore washer & dryer; 3-pc Queen bedroom set; 3-pc queen waterfall bedroom set; 3-pc blonde bedroom set; (2) twin beds; Dressers; Chest of drawers; Dining room table w/ 4 chairs; Kitchen table & chairs; La-Z-Boy recliner; Rocking chairs; Sofas; Glider; Bedding & linens; End tables; Lamps; Coffee table; Wall décor; Pictures; Mirrors; Cedar chest; Small writing desk; 19" Samsung flat screen TV; TV Stands; Emerson table top stereo; Dehumidifiers; (2) Kirby vacuums (near new); Hoover Guardsman vacuum; VCR; Small kitchen appliances; Bakeware; dishes; pots & pans; Kitchen utensils; Tableware; Tupperware; TV trays; electric heaters; Air purifier; Ironing board; Window air conditioner (new and never used); Books, Fans; Card table; Pic-nic basket; Luggage; Xmas décor; Much misc. general household items

**ANTIQUES & COLLECTIBLES:** Oak dry sink w/ mirror & towel rack; Oak rocker; Wooden wardrobe; 1940 Sylvania console stereo; Child's table & chairs; Mantel clock; Table top radio; Copper boiler; Ruby dishes; Crystal glass; Advertising pieces; Silver service set; Plates; Dishes; Budweiser beer stein collection; Nutcrackers; Old toys; Records; Trunks; Cast iron cookware; Yardsticks; Rich toys hobby horse; Typewriter; Items from Africa; Old tins

**GOLF CART:** 2014 Club Car electric golf cart, turn signals, lights, comfort cab (sharp & like new)

**VEHICLES:** (consigned by Dennis Erickson) 1992 Pontiac Bonneville SE, 250,000+ miles; 1980 Chevrolet Scottsdale 10, 1/2 ton, 4 X 4, 119,000+ miles, Runs good, For pictures visit website [www.elbersauction.com](http://www.elbersauction.com)

**OUTDOOR & MISC:** Ranch King 12.5 hp, 42" riding mower; Air compressor; Step ladders; Wheel barrow; Lawn chairs; Hand tools, Small electrical hand tools; Saw horses; Bird feeders; Garden hand tools; Golf clubs; Yard games; Buddy propane heater

MUCH MISC. TOO NUMEROUS TO MENTION

### Luella Vosburg, Lois Nelson, Stan & Connie Olsen, Owners

**TERMS:** Cash or good check, Master Card or Visa, NO GUARANTEES, Nothing to be removed until settled for.

## Elbers Auction Service

"Quality Auctions Since 1988"

**P.O. Box 196 Hills, Minnesota 56138**

Keith Elbers 507-962-3433 or 920-6131 Clark Ahlers 712-470-4700

[www.elbersauction.com](http://www.elbersauction.com)

# Cragoe Realty

Selling Real Estate  
in the Heart of the Prairie Land.

Your hometown real estate broker for over 22 years  
Gene Cragoe, broker lic. in MN & SD [info@cragoe.com](mailto:info@cragoe.com)  
507-283-2647 or 800-689-2647

**We have buyers! WE NEED YOUR LISTING!**

**LUVERNE'S LOCALLY-OWNED AND OPERATED MLS AGENCY**

**FOR COMPLETE LISTINGS LOG ONTO  
WWW.CRAGOE.COM**

The first step to successfully selling  
your home is *listing it with us!*

**1007 N ELMHURST, LUVERNE | \$149,900**



The main floor offers a kitchen with newer cupboards and countertops, dining area off the kitchen, living room with newer bay window, main floor laundry area, three bedrooms and a full bath. The lower level is partially finished with a large area for a family area or game room and additional laundry located in the lower level. The home has newer shingles and cement board siding. There is a 10'x 12' storage shed located in the back yard and also has a new deck with composite floor.

**114 W LUVERNE, LUVERNE | \$169,900**



This is a meticulously well cared for home! The exterior offers a new roof, majority of the windows have been replaced, well maintained lawn, large lot, beautiful flagstone patio, wood deck, 8'2 x 22' storage shed and partially fenced the back yard. The main floor offers a nice kitchen with all of the appliances staying and an eat in area, dining room has beautiful original woodwork and maple hardwood floors, living room has a wood burning fireplace, walk through office area, family room with oak hardwood floors located on the main floor could be converted into an extra bedroom, enclosed front porch and a 3/4 bath with shower. Gorgeous original woodwork staircase leads to the second floor which offers a large master bedroom, two additional nice sized bedrooms and a full bath and a great storage closet. The lower level of this home offers an additional family room with projection TV which stays with the home, another legal bedroom with recessed lighting, laundry room, large storage room and a 3/4 bath with shower. The boiler and water heater have been updated as well as 100 amp circuit breakers. This home is full of updates and offers a lot of living space. A home you do not want to miss out on!

## Duane J. Mulder Realty

**DUANE MULDER AUCTION SERVICE**  
Office 507-283-4901



### AUCTION SCHEDULE

Currently Taking Consignments For Our Next Indoor Auction At The Duane Mulder Auction Center, Downtown Beaver Creek, MN. **Yes, we sell cars, pickups, trailers, campers & boats on these auctions.** Call 507-283-4901 Or 507-220-3558 To Get Your Items Consigned To This Auction.

**Friday & Saturday, April 7 & 8** – 10:00 A.M. both days. Large 2-day open Consignment Auction at the Duane Mulder Auction Lot southeast of Luverne, MN. Livestock equipment and miscellaneous sells on Friday April 7. Farm equipment, trucks, pickups, cars & scrap machinery sell on April 8.

**Sunday, April 9** – Noon meal followed by live annual Christian Education Benefit Auction at the United Methodist Church, Luverne, MN

**DUANE MULDER** – Auctioneer – Real Estate Broker – Certified Agricultural Appraiser. Office Phone 507-283-4901 - Cell Phone 507-220-3558.

### Hamann Repair

Repairing all makes of tractors, skid loaders, combines and small engines.

For all your parts needs call 507-283-0041

Over 30 years experience

**David Hamann, Luverne**  
Open Mon.-Fri. 8 a.m. to 5 p.m.  
Phone 507-283-0041

### Tree Tech Inc.

Luverne, MN

507-283-8552  
507-920-6424 cell

tree removal  
tree trimming  
stump grinding  
tree moving



Star-Herald.com

## Real Estate Retrievers

ALL STATE TEAM

Keith Elbers, Realtor/Auctioneer 507-920-6131  
Deb Aanenson, Realtor/Office Manager/Broker Assistant 507-920-9921  
Gene Aanenson, Realtor 507-920-9920  
Jen Rolfs, Realtor 507-227-2985

REALESTATEREtrievers.COM • REALTOR.COM • HOMEVIEWSIUXFALLS.COM



- Ready built homes • Andersen windows • Cabinets
- Siding • Doors • Quality lumber at great prices (compare)
- All Homes are state inspected to meet requirements
- Custom Blueprinting • Delivery Available
- No need to wait in lines

Call Randy or Harlan about your plans

507-442-4821 • Box 247 • Leota, MN

### SMART TIP: WALK-THROUGHS

Homebuyers probably know it's a good idea to get a home inspection done on any house you're purchasing. But did you know it's just as important to do a final walk-through close to the date of closing/settlement? This chance to go into the home before you purchase it allows you to confirm the condition of the home - while you still have time to negotiate with the seller.

It's important to view the home after the sellers have moved out to ensure that the sellers or movers didn't damage anything, no odd (i.e. costly to remove) items are left behind, what was supposed to remain in the home is there and all agreed-upon repairs have been completed satisfactorily. Talk to us about your closing/settlement timeline and when the walkthrough is scheduled.

### FEATURED LISTING



**607 W Luverne, Luverne \$85,000**

You don't want to miss out on this timeless home. Recently updated with fresh paint, light fixtures, fireplace surround, window treatments, new roof and gutters fall of 2015, new AC in 2012 and new furnace in 2013, all you need to do is move in. This two bedroom home overlooks an open field for that out of town feel. The living room is spacious with a corner gas fireplace and hardwood floors. The main bath has been completely transformed. New, wiring, plumbing, drywall, flooring, awesome ball & claw foot tub/shower for soaking the day's worries away, sink and stool. Both bedrooms feature new light fixtures, hardwood floors and spacious closets. The kitchen received new flooring, light fixture, fresh paint and the appliances stay. Enjoy your evenings on your backyard deck or playing games in your spacious backyard. Call your favorite agent today!

Keith Elbers, AUCTIONEER/REAL ESTATE SALES  
Lic #67-62  
[www.ElbersAuction.com](http://www.ElbersAuction.com)

## ESTATE FARM EQUIPMENT AUCTION

TYM HST503 Tractor, Allis Chalmers 45 Tractor, 2012 Yardsport YS700 4x4 UTV, 2 Kubota Riding Lawn Mowers, Yard & Garden Items, Shop Items & Tools, 6 Weather Vane Globes, Num. Gumball Machines, 1950 Ford 2 Door Automobile, Shop Items & Tools, Antiques & Collectibles & Misc.

In order to settle the Steve Frick Estate, we will offer the following items located at 641 80th Ave., Pipestone, MN or from the Jct. of Hwy. #75 & 30 in Pipestone, MN (McDonalds Corner) - approx. 3 1/2 miles south on Hwy. 56 (80th Ave.) or from Ihlen, MN - 3 miles east & 2 1/2 miles north on 80th Ave.

**SATURDAY APRIL 8, 2017 Sale Time: 11:00 am**

Lunch by Brian's 19th Hole B-Que

For complete auction ad, see [www.suttonauction.com](http://www.suttonauction.com).

### STEVE FRICK ESTATE

CHUCK SUTTON – Auctioneer & Land Broker  
– Sioux Falls, SD – ph. 605-336-6315 & Flandreau, SD – ph. 605-997-3777  
DEAN STOLTENBERG - Auctioneer & RE Broker Assoc. - Jasper MN – Ph. 507-348-7352  
JARED SUTTON – RE & Pers. Property Auctioneer – Flandreau, SD – ph. 605-864-8527  
CLERK: Chuck Sutton Auction Service, LLC

# Here's My Card

Your Quick & Easy Guide to Area Businesses

### Kozlowski

Insurance Agency & Financial Services, Inc.

**Shirley Top**  
Sales Representative MN Lic. 27249  
P.O. Box 766 | 212 South Kniss Ave.  
Luverne, MN 56156  
Phone: 507-283-3704  
Toll Free: 1-877-631-3704  
Fax: 507-283-3733  
shirley@kozlowski-insurance.com  
[www.kozlowski.com](http://www.kozlowski.com)  
For all your insurance & investment needs!

## Floor Covering Installation

carpet, vinyl and wood  
cost effective solutions for rental properties

Randy Hanson | 507-329-1002

### ROCK COUNTY CHIROPRACTIC

• Men, Women & Children's Health  
• Custom Orthotics • Kinesiotape • Athletic Care • Massage Therapy • Work & Auto Injuries • Postural Restoration

DR. MICHAEL SMITH  
Most Insurance Accepted

[WWW.ROCKCOUNTYCHIROPRACTIC.COM](http://WWW.ROCKCOUNTYCHIROPRACTIC.COM)  
283-2561 • 103 E. MAIN, LUVERNE  
Monday 7:30 a.m. - 6 p.m. • Tuesday 7:30 a.m. - 3 p.m.  
Wednesday 7:30 a.m. - 6 p.m. • Thursday 7:30 a.m. - 1 p.m.  
Friday 7:30 a.m. - 5 p.m.

### Loosbrock Electrical Construction, LLC

Licensed • Bonded • Insured  
Residential • Commercial • Industrial • Agriculture

Scott Loosbrock  
Owner

507-360-5418 • [scott@loosbrockelectric.com](mailto:scott@loosbrockelectric.com)  
[www.loosbrockelectric.com](http://www.loosbrockelectric.com)

### McClure

PLUMBING, HEATING, AIR CONDITIONING, INC.  
412 S. Kniss - Luverne, MN • 507-449-2828

Jerry Buss Lic. #002732PM **RAIN BIRD** **Carrier**  
Troy Buss Lic. #005573PM **LENNOX** **BRADFORD WHITE**  
SD # Luv-MN-R117-98-1262C

\*Licensed, Bonded and Insured in Minnesota and South Dakota\*

### CLEVERINGA CONSTRUCTION

507-920-5631

• For All Your Building Needs • Additions • New or Remodel  
[www.cleveringaconstruction.com](http://www.cleveringaconstruction.com)

Merlin Cleveringa 879 - 100th Ave., Luverne, MN  
507-283-2698 Home Lic. # BC-20552185

### Stroeh's Auto Center

We provide complete auto care for any make or model vehicle, from oil changes to engine repairs

Alan Stroeh • 321 E Main St. • Luverne • 283-4226  
[www.stroehsauto.com](http://www.stroehsauto.com)

### Preston Power

Preston Neese 507-227-9156  
Owner PO Box 151  
[hjprestonpower@gmail.com](mailto:hjprestonpower@gmail.com) Magnolia, MN 56158  
small engine repair \* snowblowers - all makes & models

### ROCK MOTORSPORTS

MOTORSPORTS AND POWER EQUIPMENT  
PARTS - SERVICE  
507-449-4386

Bill Aanenson - Owner  
621 S Kniss Ave Luverne, MN 56156

### Rock County EYE CLINIC

Dr. Sandra Carman

507-283-2345

102 N. Freeman Ave., Luverne, Minnesota

### FRANKEN CONSTRUCTION

Travis Franken, Lic #20627458 & Insured  
1332 181st St., Luverne

507-920-8253

Call today for a FREE ESTIMATE.

REMODELING • NEW ADDITIONS • SIDING  
DECKING • WINDOW/DOOR REPLACEMENT  
GARAGE DOORS • CONCRETE  
NO JOB IS TOO SMALL!!!

### Tree & Stump Removal

FREE ESTIMATES

Traci Davis 605-759-7880  
Mike Davis 507-227-7068

New Construction - Home Additions - Interior & Exterior  
Home Remodeling - Windows - Siding - Drywall -  
Foundation Work & Walls - Sidewalks & Driveways

### Oehlerts & Son Construction

30 Years Experience  
Kevin Oehlerts, Luverne,  
[www.OehlertsAndSonConstruction.com](http://www.OehlertsAndSonConstruction.com)  
507-673-2206  
Lic.# BC064924

### LUVERNE HEALTH & WELLNESS

Codie Zeutenhorst, D.C., CAC

- ✓ Acupuncture
- ✓ Chiropractic Care
- ✓ Family Care
- ✓ Sports Injuries
- ✓ Kinesiotape
- ✓ Auto & Work Injuries

Acupuncture and Massage Available  
Kris Van Der Brink M.T. & Amy Rosales M.T.

507.449.4400 [www.luvernechiro.com](http://www.luvernechiro.com)  
109 S. Freeman Ave. | Luverne, MN

**GRAVEL BIDS: MAGNOLIA TOWNSHIP**

Magnolia Township will be accepting gravel bids for gravel to be applied on township roads. Bids must be received by April 11, 2017.

Send to: Magnolia Township  
1581 121st St.  
Luverne, MN 56156

Magnolia Township Board

please join us for a  
**Baby Shower**  
Lyndsie (Johnson) Deragisch

SATURDAY, APRIL 8 | 10 A.M. - 12 P.M.  
AMERICAN REFORMED CHURCH  
(304 N. FAIRVIEW, LUVERNE)

Registered at Target & buybuy Baby

OPEN HOUSE  
*Bridal Shower*  
**Dani Baker**  
Bride to be of  
Shea Klooster

Saturday, April 8 • 10a.m.  
Steen Reformed Church  
the couple is registered at Target, Menards & Country Boutique in Rock Rapids  
everyone is welcome

Get all your Car Licenses & Title Transfers at  
**DEPUTY REGISTRAR'S 141 INC.**  
821 Main Street • Edgerton • 507-631-1028

Business Hours:  
Monday through Friday, 8 a.m. - Noon, 1 p.m. to 5:15 p.m.  
Saturday 8 a.m. to noon and  
Wednesday evenings 6:15 p.m. to 8 p.m.

**NOW OFFERING FAST TRACK**

Bring in your current policy for a comparison today!



**CATTNACH INSURANCE AGENCY**

South Hwy. 75, Luverne, MN  
507-283-8383 or 1-800-258-4471  
E-mail: info@cattnach.com  
Website: www.cattnach.com



MARK YOUR CALENDARS  
SATURDAY, APRIL 8 • 3pm

COME AND PLAY  
**PITCH UP THE DAM CREEK**

Downtown Beaver Creek • 507-204-7740  
3-7 Mon-Thurs • 10am - 1am Fri & Sat

**ICELAND**  
From \$1,696 per person  
10 day, self-drive tour  
Full Circle Tour • Land only  
Select May - June dates  
Pricing based on 2 adults  
Call for more details!

**MUNICH**  
From \$1,155 per person  
6 nights hotel  
Roundtrip airfare from Minneapolis  
Royal Castles Tour  
Select May - June dates  
Pricing based on 2 adults  
Call for more details!

**ALL ABOUT TRAVEL INC.**  
9-Year Winner! Layaway & Gift Certificates Available!  
605-339-8911 • 1-800-390-6610  
3801 S. Western Ave., Suite 103, Sioux Falls, SD  
Open: Mon-Fri. 8 a.m. - 7 p.m. • Saturday 9 a.m. - 1 p.m.  
www.AllAboutTravel.org • www.facebook.com/AllAboutTravelInc  
Helping You Find Your Personal Paradise!



**Easter Egg Hunt**  
Saturday, April 8  
10:00 am

Children up to 8 years old may participate. Bring your camera for pictures with the Easter Bunny.

To learn more, call (507) 283-2375.

**Good Samaritan Society**  
MARY JANE BROWN  
All faiths or beliefs are welcome.

**PALACE THEATRE UPCOMING EVENTS**

- April 6 | Bank Nite FREE Movie "Sing" 6pm (sponsored by Papik & First Farmers & Merchants)
- April 7-9 | Movie "The Shack" Friday and Saturday 7pm; Sunday 2pm
- April 14-16 | Movie - "The Case for Christ" 7pm nightly
- April 20 | Afternoon Escape Movie - "Hacksaw Ridge" 2pm (sponsored by David Deragisch, State Farm Agent)
- April 30 | Fundraiser Concert for Little Lambs 2pm Music by Ron & Jane Cote, Dean Luethje and Wyatt Cote
- May 14 | The Brown Family Mother's Day Show 2pm

Visit us at [www.palacetheatre.us](http://www.palacetheatre.us) or on Facebook: Palace Theatre Luverne for our current listing of upcoming events!

**PALACE THEATRE**  
507.283.4339 • WWW.PALACETHEATRE.US  
LUVERNE, MN 56156

**D. & G. Drinking Water Systems**

Water made by reverse osmosis process  
Rentals • Sales • Service

610 West Hatting • Luverne, MN  
507-283-4630 • Darin Smeins Lic. # WMO68242

**Loans, leases, and crop insurance**




Pat Barnett  
866-601-0506

**AgStar**  
Financial Services, ACA  
AgStar.com

AgStar Financial Services is an equal opportunity employer and provider.

The Easter Bunny is coming to Hermans

**April 11**  
5:30 - 7:30 pm  
Free photos



**Herman**  
LUVERNE, MN  
Since 1932  
624 Kniss Ave Luverne, MN • hermanmotor.com

**LARGE 2-DAY OPEN CONSIGNMENT AUCTION**  
Near Luverne, Minnesota

Located from the I-90 Exit at Luverne, MN, 1 & 1/2 miles south on Hwy 75, 2 miles east on Co Hwy 16 or 91st Ave. & 1/2 mile south on 150th Ave; or from the east edge of Luverne, MN, 1 mile east on Co Hwy 4, and 3 & 1/2 mile south on 150th Ave.

**FRIDAY MORNING, APRIL 7 -- SALE TIME 10:00 A.M.**  
Lunch served by the Countryside Inn

**5 ACRES OF LIVESTOCK EQUIPMENT & MISC. ITEMS.**  
**2 AUCTION RINGS RUNNING UNTIL ALL ITEMS ARE SOLD.**

**AUCTIONEER'S NOTE:** This is a very large auction. Records show that only a very small portion of both the livestock equipment and farm equipment get advertised. Our customers just bring the items to the auction. Visitors are welcome during the day and evening. Because of liability and a possible accident, we ask that visitors do not drive the farm and livestock equipment lines with headlights after dark. Auction Lot closes before dark.

**CATTLE EQUIPMENT:** 7'x12' molasses tank to be cut down for a calf shelter -- new and used cattle gates, feed bunks, hay bale feeders, lots of other misc. cattle equipment.

**HOG EQUIPMENT:** large assortment of hog feeders, stain less steel feeders, water fountains, hog carriers, farrowing crates, lots of other misc. hog equipment.

**HAY EQUIPMENT:** 3-point bale carriers, 3-point & bucket mount bale spears.

**CHICKEN EQUIPMENT:** Farm Teck 12'x14' Chick In -- chicken feeders, chicken water fountains, chicken crates.

**BULK FEED BINS:** assortment of bulk bins consigned.

**POTTED EVERGREEN TREES:** Large assortment of potted evergreen trees (some may also be sold on day 2)

**FENCING ITEMS:** large assortment of steel posts, wood posts, steel fence braces, barbed & woven wire to numerous to mention.

**USED LUMBER & SHEET METAL:** new & used building steel, used ply board sheets, large assortment of new & used lumber, lots of other building material.

**BOATS:** 1981 Lund "Pike", 18' fishing boat with 50 hp engine, Eagle fish finder & electric Minnkota trolling motor -- generally more boats by sale time.

**ATV'S & MOTOR BIKES:** 2-passenger go cart -- always ATV's & motor bikes that don't get advertised.

**LAWN MOWERS & YARD EQUIP:** large assortment of rider & push mowers, garden tillers, large volume of yard equipment to numerous to advertise.

**FUEL TANKS:** assortment of gas & diesel fuel tanks.

**SHOP STEEL:** Large assortment of used steel suitable for shop use.

**SCRAP IRON:** Always lots of items for the scrap metal buyers. Scrap iron, aluminum, copper & brass mixed in the display lines.

**TOOLS & SHOP ITEMS:** tools & shop items to numerous to advertise.

**MISC. ITEMS:** radial arm saw - shaper -- drag sections for yard drags -- small portable generator - metal & plastic planter plates -- huge amount of misc. items to numerous to advertise

**SATURDAY MORNING, APRIL 8 -- SALE TIME 10:00 A.M.**  
Lunch on the grounds

**5 ACRES OF FARM EQUIPMENT**

**ITEMS COMING FROM THE DENNIS GYBERG ESTATE:** John Deere 4430 tractor - older "quick tach" loader -- 2016 Big T "Model 14FT 8'x20' full tilt bed trailer with spare tire & tool box (new appearance - believed to be never used) -- Bob Cat No. 440B skid loader - 8.5' long x 58" wide skid loader trailer with 64" loading ramp - 1977 Corvette car (silver gray color) -- 2001 regular cab Chevrolet 4-wheel drive F150 pickup with topper -- 1995 ex-cab Ford F150 pickup -- John Deere X540 rider mower -- John Deere LX188 rider mower -- 16'x8' bale wagon -- 10' x 6' 2-wheel tilt bed trailer with permanent MN license -- portable Coleman Vertex 5500 generator -- portable diesel fuel tank with hand pump -- portable gas tank with hand pump -- LB White propane heater -- small lawn 2-wheel trailer -- small pull behind lawn sprayer -- portable air compressor -- Miller stick welder -- cutting torch with cart (no tanks) -- large bench mount shop vise -- standing drill press -- chop saw -- lots of misc. shop items -- power tools, hand tools and shop supplies -- steel wagon wheels -- wood wagon wheels -- feed cooker pot -- other misc. items. NOTE: The tools, shop items, lawn mowers and small items will be sold on the Friday auction.

**ITEMS COMING FROM THE GERALD LORENZEN ESTATE:** John Deere 4430 tractor with clamp-on duals -- IHC disc with manual wings -- Allis No. 303 small square baler -- Owatonna grinder mixer.

**TRACTORS, SKID LOADERS & LOADERS:** John Deere 3020 gas tractor with syncro & wide front (no cab-retired farmer tractor) -- Skid loader mount post hole digger with 12" auger -- shop made post hole digger for skid loader -- several tractors & skid loaders pending.

**TRACTOR EQUIPMENT:** 3-point pellet fork -- large assortment of used tractor tires, duals, dual extensions, tire chains, weights, rock boxes, hitches & misc. tractor equipment.

**TILLAGE EQUIPMENT:** Case/IHC 36", No. 4800 "Vibra Schank" field cultivator with 3-bar mulcher -- JD 25' No. 230 tandem disc with cone blades -- IHC 2-point, 4-bottom plow -- plus other tillage equipment pending.

**PLANTERS, CULTIVATORS & GRAIN DRILLS:** IHC 2-point, 4-row wide cultivator -- assortment of planters & cultivators -- planter parts to fit JD 7200 & 1700 series: 4 JD 3 bu. poly boxes with lids -- 2 JD vacuum meters with mini hopper & set off 1770 planter -- 14 JD Pro corn disc -- 24 JD 108 cell soybean disc -- misc. JD cables & section controller -- 16 Keeton universal seed firmers -- 1 Ag Focus planter Pro model 444 row cleaner (will work on JD, Kinze & White planters) -- parts to fit Model 8800 White planter: 1 blower fan assembly -- 1 pressure gauge -- 2 transmissions -- 24 heavy duty down pressure kits -- 24 meters with mini hopper -- 24 medium corn discs -- 24 small corn discs -- 24 soybean discs -- other misc. parts.

**SPRAYERS:** Top Air sprayer with 1,100 gallon tank & 60' boom -- 500 gallon sprayer with controls -- Demco 500 gallon sprayer with 40' boom -- several older sprayers consigned.

**HAY & SILAGE EQUIPMENT:** JD No. 672 & JD No. 673 hay rakes with squadron hitch -- Kuhn pto driven hay rake -- Gehl 800 chopper with hay head -- Farm Hand small square bale accumulator & bale forks -- (2) 18' bale wagons -- JD No. 896 rake for parts -- mowers, rakes, bale wagons, balers, other hay & silage equipment.

**FEEDING WAGONS, GRINDER MIXERS & MANURE SPREADERS:** Gehl No. 95 grinder mixer -- assortment of manure spreaders & feeding wagons consigned.

**GRAIN HANDLING EQUIPMENT:** Sioux grain screener on wheels -- 9' & 13.5' sweep augers -- 18' single axle camper for operator shelter by the grain dryer -- large assortment of grain augers.

**WAGONS & RUNNING GEARS:** large assortment of gravity wagons, flare box wagons, barge box wagons & running gears to numerous to advertise.

**MISC. MACHINERY:** 10' box scraper -- drag sections for yard drags -- assortment of misc. machinery.

**TRUCKS, PICKUPS, CARS, TRAILERS & CAMPERS:** (Note: Titles must be in the current owner's name.) Double 1996 D 16' car trailer with 26" plank sides, recent new tires, title & 2018 MN license -- 1979 enclosed 42' semi trailer for storage -- 2-wheel trailer frame -- Hawes pickup hitch -- Always a large assortment of more trucks, pickups & cars along with salvage vehicles that don't get advertised.

**SCRAP & OLD FARM EQUIPMENT FOR PARTS:** large assortment of scrap & old farm equipment for scrap & parts.

**TERMS:** Complete settlement immediately after the auction. No guarantees. Not responsible for accidents or theft of items purchased. Computerized drivers license machine in use. All buyers are required to provide clerks with identity information. Portable restroom on the grounds.

All items must be removed from the lot 10 days after the auction  
(Any items left on the auction lot over 30 days will become property of the auction company)

**WWW.MIDWESTAUCTIONS.COM/MULDER - DUANE MULDER AUCTION & REALTY**

Sale arranged & conducted by:  
**DUANE MULDER AUCTION SERVICE**  
E-MAIL ADDRESS: [DUANEJMULDER@GMAIL.COM](mailto:DUANEJMULDER@GMAIL.COM)  
REAL ESTATE BROKER (MN, IA, SD) -- CERTIFIED AGRICULTURAL APPRAISER  
1470 COUNTY HWY 4, LUVERNE, MN -- OFFICE PHONE 507-283-4901

**DUANE MULDER, AUCTIONEER (67-44), LUVERNE, MN -- 507-220-3558**  
**JIM VON HOLTUM, AUCTIONEER (53-10), LISMORE, MN -- 507-220-3556**  
**RANDY BUNTJER, AUCTIONEER (53-18), ELLSWORTH, MN -- 507-360-2650**  
**J.J. VON HOLTUM, AUCTIONEER (67-80), LUVERNE, MN -- 507-227-8029**

# the classifieds

To place a classified ad in the Luverne Announcer, call 283-2333, stop by our office at 117 W. Main, Luverne, or visit [www.star-herald.com](http://www.star-herald.com).

**EMPLOYMENT**

**CHS Eastern Farmers Truck Drivers - Seasonal**

Wanted- *CHS Eastern Farmers Seasonal Truck Drivers* at **Magnolia MN & Garretson SD** Locations. For seasonal truck drivers a CDL and clean driving record are preferred. Also looking for Drivers for evening and weekend shifts. Hazmat and Tanker preferred but not required.

*If you are interested in applying, please email your contact info and qualifications to [kyle.heronimus@chsinc.com](mailto:kyle.heronimus@chsinc.com) or call 605-582-2415 and ask for Kyle. You can also apply online at [www.chsinc.com/careers](http://www.chsinc.com/careers) search for job req #9458*



**EMPLOYMENT**



**AIRLINE CAREERS**

Get FAA approved maintenance training at campuses coast to coast. Job placement assistance. Financial Aid for qualifying students. Military friendly.

Call Aviation Institute of Maintenance  
**800-481-7894**

**EMPLOYMENT**

**Help Wanted Internet Installer/Repair Technician**

Lismore Cooperative Telephone Company is seeking a full-time individual to become a member of our team providing hybrid broadband service in and around Lismore, MN.

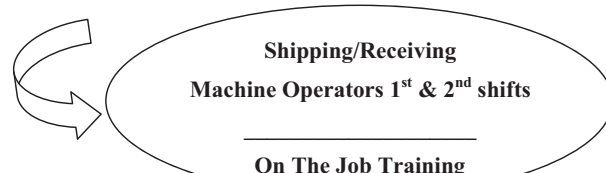
The work will include installation of our new wireless internet, maintenance and repair. Applicant must be comfortable with heights and have the ability to work in a customer orientated, fast-paced environment. Submit resume and letter of application to: Lismore Cooperative Telephone Company, PO Box 127, Lismore, MN 56155. Email: [info@lismoretele.com](mailto:info@lismoretele.com) by February 20 or until position is filled.



**Lismore Coop Telephone Co.**  
Lismore, MN  
**(507)472-8748**

**Check Us Out!!**

Located in SW Minnesota, we are a 52 year old manufacturer of vinyl promotional and custom packaging products, with excellent career opportunities available:



Send resume to:  
**FEV INDUSTRIES, INC.** 200 4th Ave N. Edgerton, MN 56128  
Or fax to: 507-631-1000  
Or e-mail to: [hr@fevindustries.com](mailto:hr@fevindustries.com)  
Applications can also be obtained from website [www.fevindustries.com](http://www.fevindustries.com)

**HELP WANTED:**



- CDL DRIVER - \$20/hour
- Farm Labor - cattle and hogs
- General Labor

Immediate openings, full and part-time, flexible hours, home nightly and competitive pay with benefits. Willing to train.

**Hokeness Grain & Livestock, Inc.**  
Adrian, MN area  
Please call/text:  
Sara: 605-366-7083  
Todd: 507-227-8802

**Help Wanted**

Lewis Drug-Luverne is seeking a part time, afternoon and weekend **Pharmacy Clerk.**

Stop in for an application at **Lewis Drug.**

Must be at least **18 years old.**



**507-283-9549**  
202 S Kniss Ave  
Luverne, MN

**NOW HIRING in Luverne**



The Gas Stop, owns and operates Holiday branded convenience Stores across South Dakota and Minnesota. The Gas Stop is a leader in the convenience store industry. We are committed to providing top tier fuel along with an extensive product selection, great value, and friendly, helpful service.

**The Gas Stop in Luverne, MN** and is currently accepting applications for the following position:

- **Part-Time and Full-Time Sales Associates**

Working at The Gas Stop isn't just a job — it's a full customer service experience. You will receive **"Top pay"** in a **"Family Friendly" Atmosphere** —not to mention the opportunity to move up within the organization —just part of what makes us so fun to work for!

Jump start your career with an industry leader. Apply now to ensure this opportunity doesn't pass you by!

**Apply at our store or on-line at [www.GasStop.com](http://www.GasStop.com)**

**Buffalo Ridge Insurance**

Insurance Tech/Customer Service position available immediately in local, professional insurance agency. Qualified candidates may provide resume in person or email to [info@buffaloridgeins.com](mailto:info@buffaloridgeins.com)

Candidate qualifications: professional telephone skills, ability to work with the public, verbal and written communication skills, proficient in Microsoft Office, detail-oriented, customer-focused, organized, ability to problem solve, team player. Business attire required. Insurance knowledge and experience desired, but not required.



**Fire Apparatus Assembler**



Midwest Fire Equipment & Repair Company is looking for a full time Fire Apparatus Assembler. Our team is looking for an individual who has a positive attitude, organizational skills and can work in a fast-paced professional manufacturing environment. Midwest Fire was named one of the 50 Best Places to Work by Prairie Business Magazine in 2015 & 2016.

Duties: Assembling plumbing or electrical subcomponents, assist in implementation and sustainment of 5S and lean efforts.

Qualifications: High school diploma or equivalent. This position requires strong work ethic and mechanical aptitude. Experience in the fire apparatus field, and/or plumbing or electrical assembly a bonus, but not required.

Applications are available online at [www.midwestfire.com](http://www.midwestfire.com). To apply, please email application or resume to [darcie@midwestfire.com](mailto:darcie@midwestfire.com). You may also apply in person at our facility located at 901 Commerce Rd, Luverne MN, office hours are 8 am to 5 pm Monday thru Thursday. Applications will be accepted till April 17, 2017.

**Grow Finish Site Assistant**

**JOB DETAILS:**

- Over-see production at multiple sites in the growing phase of swine production
- Duties include health checks, record keeping, and daily observation of production environment
- Position is located in SW Minnesota
- Applicant should be self-motivated and capable of working with team members
- Possible opportunity for advancement
- We are willing to train the right person
- 40-45 hrs/week



**SPRONK BROTHERS**

We offer an excellent benefit package and competitive wages. Apply through our website at [www.pipestonesystem.com](http://www.pipestonesystem.com)  
Pre-employment drug testing and background screening required

**BECOME PART OF OUR TEAM!**

**FT 2nd Shift Swine Techs WANTED**  
In the Lismore, MN Area



We offer **Full-time Employees**

- Competitive Wages - based on position and experience
- Health, Dental & Vision Insurance • Referral Bonus Program
- Scholarship Program • Bereavement Leave • Jury Duty
- Production Bonus • Flex Plan • 401K Plan
- Life, Long & Short Term Disability Insurance
- Paid Holidays and Paid Time Off (PTO)

**PIPESTONE SYSTEM**

Apply @ [www.pipestonesystem.com](http://www.pipestonesystem.com)  
Call 866-918-7378 to explore your future with us.

No experience necessary - we will train  
Full-time Employees average 40-45 hrs/wk, Overtime after 40 hrs  
Pre-employment drug testing and background screening required

**CONCRETE SUPERINTENDENT**

We are looking to hire a full time Concrete Superintendent to work out of our Edgerton, MN office.

**Summary**  
The Concrete Superintendent will be responsible for the planning, coordination and supervision of all activities of multiple jobsites. The Superintendent must be a skilled manager and organizer with the ability to lead and motivate people, plan well and expertly execute work, and ensure personnel and job site safety.

**Responsibilities**

- Safely manage projects on-site to produce quality workmanship within budget and schedule
- Ensures all company policy, procedures and standards are enforced at the project site
- Build and maintain good relationships with customers, owners, and subcontractors
- Responsible for all project safety
- Plans and supervises all activities of foremen and crews
- Effectively manage labor, material and equipment resources
- Maintain all paperwork needed for jobsite and employees

**Requirements**

- At least 5 years experience leading a concrete crew of 10-15 people
- Experience with footings, walls, and flatwork - FLATWORK highly desirable
- Ability to plan day to day operations, as well as work with management to forecast schedules
- Valid driver's license with ability to obtain a CDL
- Travel
- Ability to read blueprints, plans, and specifications
- Excellent communication skills
- Bilingual in Spanish and English a plus
- Ability to work both independently and as a team player

Salaried up to 100K a year, health insurance, company match simple IRA, company pickup, phone and annual bonus potential.

If interested, please submit your resume:  
Email: [kristi@kmconcreteinc.com](mailto:kristi@kmconcreteinc.com)  
Mail: K & M Concrete Construction, Inc.  
PO Box 236  
Edgerton, MN 56128



**ASSISTANT DRIVER / WAREHOUSE SPECIALIST**

Pipestone Vet Services is growing and is seeking a qualified candidate for our Delivery/Warehouse division.

**OBJECTIVE:** Ensure timely and biosecure delivery of product(s) to target destination(s). Secondary work in warehouse with order fulfillment process.

**ESSENTIAL FUNCTIONS**

- CDL with Air Brake endorsement for driving and delivering product. Hazmat endorsement preferred.
- Understanding and adherence to Bio-security rules and requirements
- Scheduled overnight truck routes. Home on weekends
- Excellent customer service on product delivery routes.
- Effective communicator, team player, Trustworthy and the ability to work Independently
- Pick, pack and ship supplies and animal health products.
- Understand and utilize MAS and ScanForce to complete job requirements
- Receive product in accurately and timely

**MARGINAL FUNCTIONS**

- Forklift operation
- Inventory counts and controls
- Stock shelves
- Remove garbage, cardboard and general upkeep of warehouse
- Attend meetings as needed
- Miscellaneous tasks as assigned

**POSITION SPECIFICATIONS**

**Education:**


- No education requirement; CDL holder with Air Brake and Hazmat endorsement or able to obtain soon after hiring.

**Experience:**

- Truck driving experience needed. Prior warehouse experience preferred.

**PIPESTONE**

VETERINARY SERVICES  
[WWW.PIPESTONESYSTEM.COM](http://WWW.PIPESTONESYSTEM.COM)



Apply today online at [www.pipestonesystem.com](http://www.pipestonesystem.com) or call Human Resources at 1-866-918-7378.  
Pre-employment drug testing and background screening required.

**HILLS-BEAVER CREEK**  
Hills-Beaver Creek School District  
301 N. Summit Avenue - PO Box 547  
Hills, Minnesota 56138  
Website: [www.hbc Patriots.com](http://www.hbc Patriots.com)

Email: [t.holthaus@isd671.net](mailto:t.holthaus@isd671.net)  
Telephone: (507) 962-3240 Ext. 13

**Full Time Elementary Teaching Position**  
**2017-2018 School Year**

**Position:** Elementary Teacher-1 FTE  
**Qualifications:** Current Minnesota Elementary Education License Required  
**Location:** The Hills-Beaver Creek School district is located in the far Southwest corner of the state of Minnesota. The district lies just 20 miles east of Sioux Falls, South Dakota. We are a tiny (growing) family orientated school district with a strong desire to assist our students in their learning.  
**Application Deadline:** Open until filled.  
**Other Items:** Must be interested in being part of a dynamic team that is focused on student achievement.  
**Apply To:** Todd Holthaus, Superintendent, Hills-Beaver Creek Schools, PO Box 547, 301 N Summit Ave, Hills, MN 56138 or email—[t.holthaus@isd671.net](mailto:t.holthaus@isd671.net) Letter of application, resume, copy of teaching license, transcripts, and three (3) current letters of reference.  
**District Application:** Submit a completed signed copy of the district employment application found on the District's website... [www.hbc Patriots.com](http://www.hbc Patriots.com) under employment tab.

- An Equal Opportunity Employer -

# the classifieds

To place a classified ad in the Luverne Announcer, call 283-2333, stop by our office at 117 W. Main, Luverne, or visit [www.star-herald.com](http://www.star-herald.com).

## EMPLOYMENT



### TUFF MEMORIAL HOME "A Home With a Heart"

The Tuff Memorial Home is currently hiring for a **CNA**. Experience preferred. If interested, contact Alex Dysthe at 507-962-3275. or email [adysthe@tuffmemorialhome.com](mailto:adysthe@tuffmemorialhome.com)

**Competitive Wage  
Full Benefits  
Pension Plan  
Friendly Atmosphere**

The Tuff Memorial Home is currently hiring a **Prep Cook/Cook** full time evening 11am -7pm shifts. If interested, contact Alex Dysthe at 507-962-3275 or email [adysthe@tuffmemorialhome.com](mailto:adysthe@tuffmemorialhome.com)

**Full Benefits  
Competitive Wage  
Pension Plan  
Friendly Atmosphere**



### TUFF MEMORIAL HOME "A Home With a Heart"

## EMPLOYMENT

New Prairie Insulation of Beaver Creek has a full-time Insulation Installer position available. Monday through Friday, health insurance, vacation, holiday, bonus opportunities. Will train. Call Dean at 605-376-3006 or 507-673-2548. (tc)

### SON-D-FARMS ADRIAN

is hiring General Farm, Hog, Field Work, Truck Driver, Maintenance person, Farm Shop Mechanic & Farm Delivery Person. Experience wanted but willing to train. PTO benefits. Call (507) 483-2245, 370-1590 or e-mail [office@sondfarms.com](mailto:office@sondfarms.com)

Tuff Village Assisted Living, Hills, MN is looking for a caring person to work with friendly tenants and staff. **Part-time care provider.** Various shifts and every other weekend. Work training provided. If interested, contact Mary Lemke at 507-962-3500 or email [mlemke@tuffmemorialhome.com](mailto:mlemke@tuffmemorialhome.com)

**Competitive Wage  
Full Benefits  
Pension Plan  
Friendly Atmosphere**



### TUFF MEMORIAL HOME "A Home With a Heart"

## EMPLOYMENT

Wanted: someone to do yard work, mainly flower beds and etc. Call 507-669-2585. (3.26-4.13)

Luverne Public Schools is seeking applications for a Para-professional. Application form available at [www.isd2184.net](http://www.isd2184.net). Submit letter of application to Luverne Schools, 709 North Kniss, Luverne, MN 56156. (3.30-4.16)

Adrian Public School is seeking applications for a full time Elementary School Social Worker or Guidance Counselor for the 2017-18 school year. Applicants with a Minnesota licensure or are eligible for Minnesota licensure as a School Social Worker or Guidance Counselor will be considered. Coaching opportunities possible. Submit a Letter of Application, Resume, District Employment Application, Credential Package including Transcript, Letters of Reference, and Copy of MN License to: District Office, Adrian Public School, PO Box 40, Adrian, MN 56110. For additional information you can email or contact Elementary Principal Russell Lofthus at [rlofthus@isd511.net](mailto:rlofthus@isd511.net). Position will remain open until filled. (3.26-4.12)

Adrian Public School is seeking applications for two (2) Middle/High School Special Education Teachers for the 2017-18 school year. Applicants with SLD and/or DCD endorsements in Special Education are preferred along with a Minnesota Licensure or obtaining a Minnesota Licensure. Coaching opportunities possible. Submit a Letter of Application, Resume, District Employment Application, Credential Package including Transcript, Letters of Reference, and Copy of MN License to: District Office, Adrian Public School, PO Box 40, Adrian, MN 56110. For additional information you can email or contact Dean of Students Cate Koehne at [c.koehne@isd511.net](mailto:c.koehne@isd511.net). Positions will remain open until filled. (3.26-4.12)

The Luverne United Methodist Church is seeking a Children's Ministry Coordinator for 20 hours per week. This is a high energy, fulfilling position which works with our Family Ministry Team to provide children's programming. Coordinator will have a strong team and leadership available to them. Please send resume to 109 North Freeman Ave. Luverne MN 56156 (3.12-4.6)

## EMPLOYMENT

Nursing Assistant: Parkview Manor has openings for part-time nursing aides with benefits to include: health insurance, public retirement plan, and holiday pay. New wages \$11.90/ hr. or more with experience. \$2000 scholarships available for students. Will provide training or pay for experience. Contact Darnell Krull, 308 Sherman Ave. Ellsworth, MN 56129 or call 507-967-2388. (tc)

## CARDS OF THANKS

A special thank you to First Farmers and Merchants for packaging the bags for March. **Luverne Backpack Program** (4.2-4.6)

Thank you to everyone who sent cards and wishes for my 80th Birthday.  
**Bud Johnson** (4.2-4.6)

The family of Dolores Berning thanks you for your many acts of kindness. A special thank you to Luverne Hospice Cottage, Brenda Bullerman, Dr. Morgan, and the Dingmann Funeral Home. Also thank you to the CCW Ladies for serving lunch. Thank you to Monsignor Caletti and Father Jim Berning. No cards are being sent.

**Ed Berning  
Doug and Willy Berning  
Dave and Diane Banck  
Larry (Kono) Berning and  
special friend, Tess Vander-  
Plaats** (3.30-4.2)

Thank you to our family and friends for your cards, prayers, and memorials that were given for our mother, grandmother, and great grandmother. Thank you to Edgebrook Care Center and Pipestone Hospice for her care. Also thanks to Jeff Hartquist and Pastor Alena for the beautiful service.

**The family of Nellie Smith** (3.30-4.2)

## FOR SALE

For Sale: double-bed with spring and mattress. Matching dresser with mirror. Call 507-962-3767. (4.2-4.6)

For Sale: 2005 Chrysler PT Cruiser. Convertible, excellent condition. Call 507-283-9050 or 507-920-0036. (3.26-4.13)

## MISCELLANEOUS

HAVE A UNIQUE SERVICE OR BUSINESS? Get the word out to over 1.4 million households. Call WIDE AREA CLASSIFIEDS today, 507-359-7326. (tc)

## AGRICULTURAL

Tree stump grinding: I also have yard dirt, landscaping rock, and gravel pea rock. I have trucks, so I can deliver. Call Wayne Biever at 507-227-4521 or 507-283-4614. (3.12-4.2)

We have several crews of rock pickers and we also do any type of farm work. Call 712-943-2084. (tc)

## WINDOWS

We custom build and install Energy Star Therm-O-Loc Windows. Call Mike at Adrian Glass for a free in-home demonstration and estimate. 101 E. Pearl, Adrian, MN 56110. 507-483-2228 or 605-770-7677 or email [mbyler@santel.net](mailto:mbyler@santel.net). (tc)

## PERSONAL

Male seeks female companionship, maybe more. 507-295-2386. (3.19-4.6)

## RENTALS

For Rent: two-bedroom apartment with central air, water and heat, and one car garage included. On-site laundry. quiet area, no smoking, no pets. Call 507-920-0406. (3.19-4.6)

For Rent: one-bedroom furnished upstairs apartment with car port. No pets allowed. References required. Call 507-283-9720. (tc)

## SHOP SPACE FOR LEASE in Luverne

Good location. Available July 1. Approximately 2,000 sq. ft. Can build to suit needs 507-360-7844

## BLUE MOUND TOWER



**Luverne HRA • Blue Mound Tower**  
216 McKenzie Street  
Luverne, MN 56156

507-283-4922

Apartments available!

- All Ages Welcome
- Close to Senior Dining
- Close to Luverne West College
- Income Based
- Pet Friendly
- Smoke Free
- Secure Entry System
- On Site Laundry
- Utilities included

## CADNET NATIONAL ADVERTISING NETWORK

**AUTOS WANTED** - ALL MAKE/ MODELS. 2000-1978. DEAD OR ALIVE! \$500-1000. (MCN)  
**ADoption** - CONSIDERING? Call us first. Living expenses, housing, medical, & continued support afterwards. Choose adoptive family of your choice. Call 247-855-3994 (404) (Vlad in IL & WI) (MCN)  
**ADoption** - VAGRA 100MB AND CALIS 20MB 50 PULLS FREE SHIPPING! (VAGRA 100MB 100MB CALL 800-212-4061 VAGRA 20MB 100MB CALL 800-212-4061) (MCN)  
**ADoption** - TRUCK DRIVERS: CDL-A. Company drivers and Owner Operators. Great pay and benefits. Driver friendly. All miles paid. Many bonuses. Home when needed. No experience required. Helping home owners since 2011. Great Opportunity! Start immediately! [www.incomebuilders.com](http://www.incomebuilders.com) (MCN)  
**ADoption** - Are you in BIG trouble with the IRS? Stop wage & bank levies, liens & audits, un-

## Midwest Free Community Papers

**Midwest Classifieds**  
Call 507-825-3333 or 800-325-6440 to place your Minnesota Free Community Paper classified ad.  
**ADoption** - MOTORCYCLES: TOPS CASH PAID! For CR Motorcycles! 800-978-7840 (MCN)  
**ADoption** - STUDENT LOAN PAYMENTS got you down? We can help reduce payments and get financing under control. Call 800-871-1626 (MCN)  
**ADoption** - STOP OVERPAYING! Your prescription! SAVE! Call us for all your insurance and international pharmacy. Compare prices and get \$25.00 OFF your first prescription! Call 1-800-263-4099 Promo Code C02C0215 (MCN)  
**ADoption** - DIGITAL HEARING AIDS - Now offering a 45-Day Risk Free Offer! FREE BATTERIES for Life! Call us to start your free trial! 855-822-0774 (MCN)  
**ADoption** - Got Knee Pain? Back Pain? Shoulder Pain? Get a pain-relieving brace at 10% or 10% cost to you. Medicare Patients Call Health Hotline Now! 1-800-604-2613 (MCN)  
**ADoption** - ATTENTION: VAGRA AND CALIS USERS! A change is coming to high displacement print! 50 PPS Special - 999 FREE Shipping! 100 Percent Guaranteed. Call Now! 1-800-795-9587 (MCN)  
**ADoption** - Vagras! 52 PPS for only \$99.00! You'll find a trusted provider for 10 years, insured and Guaranteed Delivery. Call today! 1-800-423-7751 (MCN)  
**ADoption** - Spectacular Triple Play: TV, Internet & Voice for \$29.99. 60 MB per second speed. No contract or commitment. We buy your existing contract up to \$500! 1-800-919-5588 (MCN)  
**ADoption** - Enable satellite internet. Affordable, high speed broadband satellite internet available in the U.S. Order now and save \$100. Plans start at \$39.99/month. Call 1-800-712-9086 (MCN)  
**ADoption** - STOP TV - BEST DEAL EVER! Only \$39.99/mo. Plus \$14.99/mo. (limited time offer!) FREE Streaming! FREE local (up to 8 rooms) FREE 10-DVR. Call 1-800-360-5146 (MCN)  
**ADoption** - A PLACE FOR MOM: The nation's largest senior living referral service. Contact our trusted local experts today! Our service is FREE!  
**ADoption** - ALL THINGS BASEMENT! Basement Systems Inc. Call us for all of our basement needs! Waterproofing, Finishing, Structural Repairs, Humidity and Mold Control. FREE ESTIMATES! Call 1-800-648-8195 (MCN)  
**ADoption** - SWITCH TO DIRECTV: Lock in 2-Year Price Guarantee (500/month) with 1 Year Guarantee. Over 140 Channels. PLUS Popular Movie Networks for Three Months. No Up-Front Pay! Call Now! 800-552-6707 (MCN)  
**ADoption** - SWITCH TO DIRECTV: From \$50/month, includes Free One HD DVR & 3 months FREE! SWITCH TO DIRECTV. You may also qualify to receive \$100 VISA gift card when you sign up today - Limited time only. Call Now! 844-359-1203 (MCN)  
**ADoption** - Attention: Routes and Contractors! Are you looking for more income, low cost roofing? Must be honest, highly motivated, trustworthy & responsible. Excellent training. Serious inquiries only. Call 1-855-222-1988 today for more info! (MCN)  
**ADoption** - Lower than Call Phone Bill: Get 2 lines of unlimited data for \$100/mo. with Add'l Pay-As-You-Go & New included. Unlimited Streaming & Mobile Hotspot included. Limited offer/Restrictions Apply. Call Today and Save. 855-549-5599 (MCN)  
**ADoption** - Paying too much for insurance? Not sure? Want better coverage? Call now for a free quote and learn more today! 800-477-7382 (MCN)  
**ADoption** - Stop paying too much for cable, and get more today. Call 800-509-9802 to learn more about our special offer!  
**ADoption** - Have you or a loved one had lung cancer? Call now to see if you are eligible for compensation! 855-553-6522 (MCN)  
**ADoption** - Reduce your total credit card payments by up to 30% to 50%! Call Consolidated Credit Now! 844-764-1891 (MCN)  
**ADoption** - Moving out of state? Best Interstate Moving and Storage Rates. Free Estimates. Free Price Promises. Call 855-428-8241 Now! (MCN)  
**ADoption** - Save money with super Custom Design. Call Now! 855-428-8241 (MCN)  
**ADoption** - Free Price Quotes! Call today to find out how to save \$100. Call 855-882-0718 Now! (MCN)  
**ADoption** - OXYGEN - Anytime. Anywhere. No tanks to refill. No deliveries. The 40-hour program. One GA in only 2.8 hours! FAA approved! FREE info. Call 855-995-9533 (MCN)  
**ADoption** - PERSONALS: MEET SINGLES RIGHT NOW! No paid operators. Just real people! Mail you. Browse greetings, exchange messages and connect via. Try it free. Call now: 800-357-4970 (MCN)



## Full-time diesel mechanic needed to join our team.

Experience is a plus. Benefits package. Uniforms provided. Competitive pay based on qualifications. Send resume to [bjmenterprises@alliancecom.net](mailto:bjmenterprises@alliancecom.net) or mail to 191 101<sup>st</sup> Street, Beaver Creek, MN 56116 Phone # 507-597-2012

## MN VETERANS HOME

**Student Worker Custodial/Maintenance:** Assist with the maintenance of the facility and grounds including lawn mowing, trimming, painting and other light maintenance duties. Basic knowledge of lawn care required. Part-time/temporary (May-August) Hours: 32 hrs/wk; 7:00 am - 3:30 pm; may be scheduled weekends. Applicants must be enrolled in a secondary educational program or planning to enroll within three months of initial appointment. Hourly wage: \$11.03. Apply online: <http://mn.gov/mmb/careers/> Job ID: 12488 **Application deadline: April 10, 2017.**



## FOR SALE

## MINI STOR ALL OF LUVERNE

1-90 & Hwy. 75  
Luverne, MN  
(507)283-9220

The following units will be sold at auction on **April 12, 2017 at 10 a.m.**

- ERICA MENNING #011**
- MICHELE SCHELLER #008**
- TAMARA HORN #045**
- ERIN MURPHY #005**

Units contain household items, clothing, tools and misc.

For more information contact us at Mini Stor All 501 E 41st Street Sioux Falls, SD 57105 (605) 333-9873

Be a part of Rock County's oldest business at [www.star-herald.com](http://www.star-herald.com)

## RECYCLE



## HOW COMFORTABLE IS YOUR HOME?

ENERGY STAR® certified heating and cooling equipment can have a big impact on your comfort, and lower your utility bills. Ask us for details about these rebates for your home:

- Central air-conditioner: \$250 - \$450
- Air-source heat pump: \$250 - \$450
- A/C or heat pump tune-up: \$30
- Geothermal heat pump: \$200/ton
- Efficient motor in furnace or air handler: \$150
- Programmable thermostat: \$25



305 E Luverne, PO Box 659  
Luverne, MN 56156  
(507) 449-2388  
[www.cityofluverne.org](http://www.cityofluverne.org)

Details and rebate applications are available at [www.brightenergysolutions.com](http://www.brightenergysolutions.com). Apply online, or print and mail your application to us, your local municipal utility.



**MARCH MARKDOWN MADNESS**

**Papik MOTORS**  
1-90 Luverne, MN

Going on **NOW**  
at **Papik's!**

**283-9171 | PAPIK.COM**



**2017 Chrysler Pacifica LX**  
M.S.R.P. \$29,590 Stock #529568Y

**\$5,000 OFF M.S.R.P.**

**Papik Price \$24,590**

**2016 Jeep Renegade Latitude**  
M.S.R.P. \$27,360 Stock #13604J

**\$6,000 OFF M.S.R.P.**

**Papik Price \$21,360**

**2017 Dodge Grand Caravan SXT**  
M.S.R.P. \$32,980 Stock #558670D

**\$6,000 OFF M.S.R.P.**

**Papik Price \$26,980**

**2017 Chrysler Pacifica Limited**  
M.S.R.P. \$47,475 Stock #553833Y

**\$8,000 OFF M.S.R.P.**

**Papik Price \$39,475**

Perfect for your **Easter Dinner!!**  
**Grand Champion**

**Old Fashion HAM**  
Boneless or Bone-in

**Ellsworth Locker**  
Brian & Kathy Chapa  
Open Mon.-Fri. 7:30 a.m.-6:00 p.m.; Sat. 7:30 a.m.-3:00 p.m.  
24 Hour Emergency Service  
Phone 967-2544 • Ellsworth, MN • Home 967-2537

**Meats & Sausages**

**RED ROCK TOWNSHIP**  
**ADVERTISEMENT FOR BIDS**

Red Rock Township of Minnehaha County in South Dakota will accept bids for grading, graveling, snow removal and mowing of township roads. Bids must be received by the clerk on or before April 20, 2017 and will be opened April 25 at 7:30 p.m. during the monthly board meeting. The Board of Supervisors reserves the right to reject any or all bids.

**James Andersen, Township Clerk**  
25913 485th Ave.  
Valley Springs, SD 57068  
Phone 605-582-3856

**RE/MAX**

**Dave Hup**  
Realtor/Owner  
507-920-5910  
dave.landandhome@gmail.com

**Billy Cowell**  
Realtor/Owner  
605-254-5450  
billy.landandhome@gmail.com

For all our listings visit  
[LuverneLandandHome.com](http://LuverneLandandHome.com)

**RE/MAX Land and Home**  
507-449-6111

117 East Main Street • Luverne, MN  
Each Office Independently Owned and Operated

**208 S Main Ave, Hills**  
**Hills Bar \$59,900**

Perfect business opportunity, list price includes all inventory. Very good condition - newer roof, updated wiring, turn key.

[www.Star-Herald.com](http://www.Star-Herald.com)

**Learn to Skate Hockey**  
**Figure Skating Lessons**  
**Learn to Skate**

**ONLINE REGISTRATION**  
**OPEN NOW!!!**

**Spring Learn to Skate Lessons**  
at the **Blue Mound Ice Arena** in Luverne, Minnesota

Offering basic learn to skate classes as well as learn to skate hockey and figure skating classes. Classes are 30 minutes long with class times beginning at 5pm, 5:30pm and 6pm. Classes run for 6 weeks!!!

**Classes Begin Monday, April 10th**

[www.bluemoundfigureskating.com](http://www.bluemoundfigureskating.com)

For more info. call: Cathy 712-540-9021 Katie 507-227-1999

**Orv & Sons, Inc.**  
Plumbing ~ Heating ~ Cooling  
507-967-2464

Office hours: M-F 7:30-noon & 1-5 ~ Sat 7:30-9 a.m.

\*Licensed for pump installation, sewer installation & Backhoe services  
\*Roto-roter, Pipe Location & Camera Inspection System  
\*Oxyblast-water treatment Product  
\*Lennox Furnaces & Air Conditioners  
\*\*NOW ACCEPTING CREDIT CARDS\*\*

308 S. Broadway St.  
Ellsworth, MN

Take time out of your day to have a quiet time with God

**DIAL-A-DEVOTION**  
**283-4005**

an outreach ministry of St. John Lutheran Church

*News, Sports, Opinion, Variety and More!*  
[www.STAR-HERLAD.com](http://www.STAR-HERLAD.com)

**New Prairie Insulation, Inc.**  
Serving Residences & Contractors  
**FREE ESTIMATES**  
**---Insulation---**

Arnold Bronsema  
Beaver Creek, MN  
507-673-2548 or 1-800-232-7089

**CERTIFIED ENERGY EXPERT**

**SHOP, TASTE, MINGLE and PLAY** at the

**Love the Ladies EXPO**

SPONSORED BY **SANFORD Luverne** and **Luverne Area Chamber & CVB**

**SATURDAY, APRIL 8, 2017 • 9AM-4PM**  
**GRAND PRAIRIE EVENTS**  
105 SOUTH ESTEY STREET • LUVERNE, MN

FREE BRUNCH served 10am until gone!  
Courtesy of SANFORD LUVERNE

SEMINARS throughout the day!  
FOOD & BEVERAGE TASTINGS throughout the day!  
LIVE MODELS AND DEMONSTRATIONS throughout the day!  
DRAWINGS for four \$100 Luverne Chamber Gift Cards!  
(Drawings at 10am, 12pm, 2pm & 3:30pm)

35 GREAT BOOTHS with samples, drawings, discounts & more!

**FREE admission**

Spring has arrived at **Closet to Closet**

- Easter Dresses
- Sandals • Purses
- Jewelry

check out our new Boutique Clothing

Something for everyone! New consignments arriving daily!

**Closet to Closet Inc. Consignment**  
200 Maine Ave., Adrian  
507-483-2050  
Hours: Tues., Wed., Fri. 9 a.m. - 5 p.m.;  
Thurs. 9 a.m. - 7 p.m. • Sat. 9 a.m. - 3 p.m.

**85th Birthday Open House**  
**Gerhard Fick**  
- Saturday, April 8  
1 - 3:30 p.m.  
Luverne Senior Citizens Center  
no gifts please  
Greetings may be sent to:  
214 W Veterans Dr.  
Luverne, MN 56156

**April Spring Sale**  
**50% off frame with purchase of lenses**  
Sale ends 4/28/17

Offer cannot be combined with insurance.

**Rock County EYE CLINIC**  
507-283-2345  
102 N. Freeman Ave.  
Luverne, Minnesota  
[www.rockcountyeyeclinic.com](http://www.rockcountyeyeclinic.com)  
LIKE US ON facebook

Rock County Eye Clinic, locally owned, community involved, clearly different.