

A Luverne ANNOUNCER

117 West Main St. • Luverne, MN 56156-0837 • Phone 507-283-2333 • Address Service Requested

PRSR STD
U.S. POSTAGE
PAID
Permit No. 22
Page 1 Printers
Postal Customer

VOLUME 86 NUMBER 8

ROCK COUNTY'S FREE CIRCULATION PUBLICATION SINCE 1931

February 14, 2016

Community Update

Meetings

Rosedell Township will meet at 7 p.m. Feb. 16, rather than Feb. 15, due to the Presidents Day holiday.

Battle Plain Township Board will meet at 7 p.m. Feb. 16 at the home of Lloyd Prins.

Lady Luverne Red Hats will meet at 12:30 p.m. Thursday, Feb. 18, for lunch and at 2 p.m. at the Mary Jane Brown Home to celebrate February birthdays.

MS Support Group will meet at 7:30 p.m. Thursday, Feb. 18, at Southwest Health and Human Services, Luverne. All persons with MS, family and friends are invited. For information call 283-2069 or 283-2964.

Town and Country Garden Club will meet at 7 p.m. Tuesday, Feb. 23, in the Extension Office meeting room. Melba Boeve will present a program on cooking with coconut. The public is welcome. Call 507-597-6378.

Al-Anon meets from 6:30 to 7:30 p.m. Wednesdays in the Buffalo Ridge Meeting Room (lower level) at the Sanford Medical Center in Luverne. Call Stephanie at 507-449-1246.

Narcotics Anonymous meets at 7 p.m. Fridays and for basic text study at 7:30 p.m. Tuesdays in the basement of St. Catherine Catholic Rectory, 203 E. Brown St., Luverne. Use east door. For more information call 507-220-0137.

Alcoholics Anonymous meets at 8 p.m. Wednesdays and Saturdays in the United Methodist Church, Luverne. Note the new location during the library renovation. Call 605-321-4324.

Alcoholics Anonymous and Al-Anon meet from 8 to 9 p.m. every Thursday in Runals Memorial Hall, Edgerton. Call Naomi, 507-215-2956, with questions.

Rock County Community Library closed until March for renovations

Due to renovations, the Rock County Community Library will be closed the rest of the month. Staff will still answer phones at 449-5040, and patrons can still return materials in the drop box. Tax appointments will still meet on Mondays as scheduled, and tax appointments can still be made by calling the library.

Patrons may use their library cards at any of the 24 public Plum Creek Library locations including Edgerton, Pipestone, Worthington and Adrian.

See updates on Facebook at <https://www.facebook.com/RockCountyLibrary/>

Free tax help available at library; appointments kept during renovation

Volunteers through AARP will provide free tax services at the Rock County Community Library in Luverne through April. Call the library, 449-5040, to make an appointment. Appointments are required.

The library is closed this month, but it will be open for tax appointments on Mondays, and people can still call the library to make tax appointments. Evening appointments are also available. Bring Social Security cards to appointments.

The service is free for any private individual with a simple tax format. It's not for commercial, farming or investment taxes.

Monthly Food Ministry Feb. 18

The Monthly Food Ministry, sponsored by New Life Celebration Church, will be from 5 to 6 p.m. Thursday, Feb. 18, at the Luverne Senior Center. If you're having trouble putting food on the table, come from fresh produce, bread and meat.

Winter Carnival Feb. 20

Luverne Music Boosters annual Winter Carnival will be Saturday evening, Feb. 20, in the Luverne High School gym. The event, which raises money for music programs in Luverne schools, features carnival-style games, prizes, Bingo, raffle drawing, cake walk, cotton candy, root beer floats, pizza and more.

Community Ed

Register for these activities by calling Community Ed at 283-4724.

Make 3D Snowflakes on Feb. 18. Kids in grades k-3 will learn the technique of using folded strips of paper to make snowflakes as well as other designs. Fee is \$15.

Defensive Driving refresher class Feb. 23 will help keep your car insurance premium at a low rate. Fee is \$20 in advance.

Princesses and Super Heroes Dance on Feb. 26 will be a fun-filled evening of dressing up in your favorite princess and super hero costumes or pretty dresses and elegant suits.

There will be dancing, group games, karaoke, and treats. This is a mother-son and father-daughter date night for children ages 2 through grade 2 and their parents. Fee is \$15 per couple paid by Feb. 19. After Feb. 19 the fee is \$25 per couple.

Rock County STAR HERALD

Coming this week in the
Rock County Star Herald



John Rittenhouse photo/0218 lgh 13

Program first

Madisyn Dingmann and the Luverne Cardinal girls' hockey team made program history Tuesday by winning their first Section 3A Tournament championship in Redwood Falls. The top-seeded Cardinals fell behind 2-0 early in the game, but they blanked No. 2 Fairmont over the final two periods to secure a 5-2 victory. Read about the win in Thursday's Star Herald.

Protect Your Investment

YOU CAN'T CONTROL THE WEATHER. AND YOU CERTAINLY CAN'T CONTROL THE MARKETS. MINIMIZE YOUR RISKS WITH A CROP INSURANCE PLAN THROUGH YOUR LOCAL RCIS® AGENT. CALL TODAY.

We grow stronger every day — togetherSM



Steve Cattnach
steve@cattnach.com
AGENT



Barb Anderson
barb@cattnach.com
AGENT



Josh Teune
josh@cattnach.com
AGENT



South Hwy. 75, Luverne, MN | 507-283-8383 or 1-800-258-4471

E-mail: info@cattnach.com

This entity is an equal opportunity provider. © 2013 Rural Community Insurance Agency, Inc. All rights reserved.

Duane J. Mulder Realty

DUANE MULDER AUCTION SERVICE
Office 507-283-4901



AUCTION SCHEDULE

Currently Taking Consignments For Our Next Indoor Auction At The Duane Mulder Auction Center, Downtown Beaver Creek, MN.

Call 507-283-4901 Or 507-220-3558 To Get Your Items Consigned To This Auction.

Friday Morning, February 19 -

10:00 AM Land Auction. 312.93 +/- acres. Nobles County Farmland. Auction at Lismore American Legion, Lismore, MN. Eugene and Marla Moss, Estate

DUANE MULDER - Auctioneer - Real Estate Broker - Certified Agricultural Appraiser. Office Phone 507-283-4901 - Cell Phone 507-220-3558.

Real Estate Retrievers

ALL STATE TEAM
SERVING THE TRI-STATE AREA

LUVERNE, MN • 507-283-4216
HILLS, MN • 507-962-3433

REALESTATERETRIEVERS.COM • REALTOR.COM • HOMEVIEWSILOUXFALLS.COM

VISIT OUR NEW WEBSITE
WWW.ALLSTATETEAM.COM

1022 W FAIRVIEW



You'll enjoy the spaciousness of this 2 bedroom ranch style home located in the Northern area of the community. This home features a spacious kitchen/dining room open to the large living room featuring a bow window and cozy fireplace. The master bedroom is spacious and includes a 3/4 bath. Guest bedroom is spacious as well. You'll also enjoy the convenience of main floor laundry. The lower level has a partially finished family area with great potential for additional living space. A 2nd kitchen in the lower level enhances the potential of this lower level. There is an attached two stall garage. Exterior features include a partial brick front, and large corner lot. Make this your dream home with a little paint and new flooring it'll be perfect for your family for years to come.

Perennial Paradise over 1 acre of land. This home features 3 bedrooms, with a main floor laundry room, a full bath and a 2nd 3/4 bath in the lower level. If you have a love of nostalgia you love the antique bar from Jasper, MN in the lower level family room. In 1993 custom cabinetry was installed in the kitchen with a separate island and desk unit. Appliances are included with the sale and you'll love the kitchen pantry area for extra storage. The bathroom vanity and make up vanity plus several additional areas will feature similar custom made cabinetry as the kitchen. The 4 season room is flooded with light during the day but when you require a little privacy you'll appreciate the quality that can be found in the insulated blinds. All other window treatments are included with the home as well. A list of trees, perennials and shrubbery will be included with disclosures. This is a well maintained property that you must see to appreciate the immaculate condition.

410 W 2ND, HILLS



This home has received a complete renovation over the past 10 years from floors to rafters you'll find, new wiring, new plumbing, new flooring, and the list just goes on and on. The subtle decor in the home gives you a relaxed feeling. The traditional floor plan features 3 bedrooms and 3 baths, the tasteful dining room, drawing room with gas fireplace for extra ambiance and adjacent library/office. The master suite with his and her closets plus a walk-in closet is a ladies delight. The master bedroom also features a 3/4 bath. Main floor laundry adjacent to the master bedroom. The 4 season sun room is flooded with light, but when you want privacy use the custom made blinds. The upper level features 2 bedrooms, a full bath with a claw foot soaking tub, built in bench seat for plenty of dressing space, just picture it now. 3rd bedroom features a walk-out to the balcony area. The exterior features maintenance free siding and a wrap around porch, paver patio area.

307 E BARCK



The owners of this home have put in some great renovations over the past several years including a new roof, new kitchen, new windows and new floor covering. The home features an open floor plan with a large kitchen, dining room with hardwood floors, great natural lighting in the living room and a master bedroom with 3/4 bath on the main level. The upper level has 2 spacious bedrooms, walk in closet and full bath. The exterior features vinyl siding a covered front porch, attached single stall garage and is located on a corner lot. Short walk to down town and the public school. You should check out this affordable house today.

116 S DONALDSON



This cute and cozy story and 1/2 home is just waiting for you to call it home. This home features a Master bedroom and full bath on the main floor. Hardwood floor can be through out both the main floor and upper level hallway. Hardwoods under carpets in each bedroom. 2 bedrooms, and a great cedar closet for added storage are featured in the upper level. Spacious family room, laundry room and a recently added 3/4 bath finish off basement level. Double detached garage, storage shed, fenced in dog kennel and fire pit complete the outdoors of this home.

316 W WARREN



This home has been under ownership by the same family for over 60+ years. The home features four bedrooms 3 on the upper level and 1 on the main level. The kitchen is large and spacious with a separate dining room and large living room. The continues to have some of the special features you would find in an older home. Large lot, single detached garage. Check out this affordable home in this great small town.

122 W SANFORD, STEEN



If you are considering selling your home, call for a free market analysis to find out what your home may be worth. We look forward to the opportunity to be of service.

JMSI

JENSEN MANAGEMENT SERVICE, INC
REAL ESTATE - APPRAISALS - MANAGEMENT

Check out our listings at:
WWW.JMSI.NET

Call: 507-283-2391

Call about our private listings.

William (Bill) V. Weber, broker - 507-220-4803
William (Bill) J. Korth - 507-227-4958
Tamra (Tammy) Jo Makram - 507-227-7010

Farm Land for Sale:

85.75 Acres of SE 1/4 Sec.25 Twp 104 Range 46
County tax parcel 10-0121-000

Rose Dell Township, Rock County, MN

Interested buyers may submit name and address by February 22, 2016 To:

Agent
PO Box 529
Arlington, MN 55307

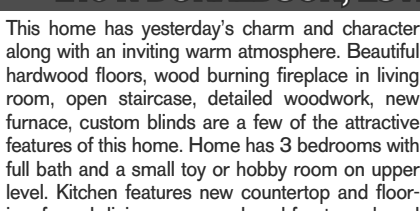
Bidding instructions and information will be mailed to you

310 S ESTEY, LUVERNE | \$64,900

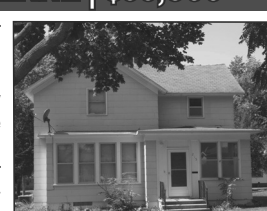


Move in ready one story home offers a pleasant kitchen with nice counter space and a dining area. The living room has great natural lighting and extra space for an office area. The main level also offers a full bath, master bedroom with walk in closet and a 2nd bedroom. Attached one car garage has been insulated. Exterior has nice landscaping and patio area. This would make a great starter home, investment property or a place to downsize.

215 N DONALDSON, LUVERNE | \$99,500



This home has yesterday's charm and character along with an inviting warm atmosphere. Beautiful hardwood floors, wood burning fireplace in living room, open staircase, detailed woodwork, new furnace, custom blinds are a few of the attractive features of this home. Home has 3 bedrooms with full bath and a small toy or hobby room on upper level. Kitchen features new countertop and flooring, formal dining room, enclosed front porch and entry between garage & kitchen along with the living room are included in the main level. Family room, non legal bedroom, laundry & storage are all found in the lower level. Nice size lot, patio & flower garden all make for a nice family home ready to move in.



LUVERNE'S ONLY LOCALLY-OWNED AND OPERATED MLS AGENCY
FOR COMPLETE LISTING LOG ONTO
WWW.CRAGOE.COM

Selling Real Estate in the Heart of the Prairiesland.

Your hometown real estate broker for over 22 years
Scott Adams, broker 507-227-0840
Gene Cragoe, broker lic. in MN & SD info@cragoe.com 507-283-2647 or 1-800-689-2647

70 +/- Acres of Prime Clinton Twp, Rock Co. MN. Farmland PUBLIC AUCTION

Thursday, February 25, 2016 Sale Time 10:00 am

More Information, Maps & Land Data at www.elbersauction.com

Location of Land: From Steen Corner on Highway 270 go 2 Miles North on Co. RD 11 (100th Ave.) or from Highway 75 & Highway 270 go 3 miles West on Highway 270 & 2 miles North on Co. Rd 11 (100th Ave.). Land will be sold at the farm location. Watch for Auction Signs.

LEGAL DESCRIPTION: West 1/2 of SW 1/4, Section-8, Twp-101N, Range 45W, Clinton Township, Rock Co. MN.

GENERAL DESCRIPTION: This is a very productive 70 +/- acre tract that consists of 66.56 acres of tillable acres and 3.44 acres of roadway and ditches. According to Rock Co. Assessors Office this tract has a CER rating of 96.04. Tract does not contain a wetland. Predominate soil types are Moody silty clay loam, Whitewood silty clay loam and Trent silty clay loam.

CORN/SOYBEAN BASE & YIELD: The corn base on this tract is 49.60 acres with a PLC Yield of 163 bu. Soybean base of 17.20 acres with a PLC Yield of 47 bu.

TAXES: Current Real Estate Taxes are \$2964.00. Taxes reflect Non Homestead status. Taxes will pro-rated to date of possession

POSSESSION: Land will be available for the 2016 crop year with possession given on March 1, 2016

TERMS: 15% down (non-refundable) immediately after auction. Buyer will be required to sign a purchase agreement at time of auction with the balance due and payable on or before March 28, 2016 when a clear and marketable abstract of title and warranty deed will be delivered to the buyer. Elbers Auction Service represents the sellers only in this transaction. Property is sold being offered "AS IS" with no warranty given or implied as to the condition or use of property. This property is offered as a cash sale with no financing contingency. Although every effort has been made to the accuracy of information given all potential buyers are encouraged to verify all information given. Property will be offered for sale subject to any easements, restrictions, reservations or right a way easement of record if any. Sale of property is subject to owner's confirmation. Any announcements made the day of auction will take precedence over any printed material. Informational booklets & maps are available on request, by contacting one of the auctioneers or by visiting website at www.elbersauction.com

AUCTIONEERS NOTE: It is a pleasure for us to offer this very attractive tract of farmland. This is an excellent opportunity to purchase a very highly productive tract of farmland that would be a great addition to your current farming operation or as an investment in some prime farmland. If you are in the market for a very desirable tract of farmland you don't want to miss this auction

Robert Beyenhof, Jodeen Fransman, Tamara Josephson - Owners

Paul Vis, Attorney for seller

Elbers Auction Service

"Quality Auctions Since 1988"

P.O. Box 196 Hills, Minnesota 56138

Keith Elbers 507-962-3433 or 920-6131 www.elbersauction.com Clark Ahders 712-470-4700

Get all your Car Licenses & Title Transfers at
DEPUTY REGISTRAR'S 141 INC.
821 Main Street • Edgerton • 507-631-1028
Business Hours:
Monday through Friday, 8 a.m. - Noon, 1 p.m. to 5:15 p.m.
Saturday 8 a.m. to noon and
Wednesday evenings 6:15 p.m. to 8 p.m.

NOW OFFERING FAST TRACK

NOW HIRING

VALOCITY STUDIOS WELCOMES

Jessica Boelman
COSMETOLOGIST

\$3 OFF HAIRCUT
EXPIRES FEB 29

\$5 OFF PEDICURE
EXPIRES FEB 29

Be sure to mention ad to receive discount

VALOCITY STUDIOS
WWW.VALOCITYSTUDIOS.COM
SALON LICENSE #15053216
507-962-3308 | 219 S MAIN AVE, HILLS, MN 56138

D. & G. Drinking Water Systems

Water made by reverse osmosis process
Rentals • Sales • Service

610 West Hatting • Luverne, MN
507-283-4630 • Darin Smeins
Lic. # WM068242

Take time out of your day to have a quiet time with God

DIAL-A-DEVOTION
283-4005

an outreach ministry of St. John Lutheran Church

Ketterling Services, Inc.

401 S. Cedar St. • Luverne, MN • 507-283-2863 • www.ketterlingservicesinc.com
Hours: Tues.-Fri. 8:30 a.m. to Noon & 1 p.m. to 5 p.m. Sat. 8:30 a.m. to Noon

Roll-Off Service for Building Demo & Remodeling

SANITATION:
Commercial
Residential
Rural

RECYCLING:
Collection
Dropoff

Monthly - Weekly - Daily

Orv & Sons, Inc.

Plumbing ~ Heating ~ Cooling
507-967-2464

Office hours: M-F 7:30-noon & 1-5 ~ Sat 7:30-9 a.m.

Licensed for pump installation, sewer installation & Backhoe services
Roto-rooter, Pipe Location & Camera Inspection System
Oxyblast-Hydrogen Peroxide water treatment Product
Lennox Furnaces & Air Conditioners

308 S. Broadway St. Ellsworth, MN

80 +/- Acres of Denver Twp, Rock Co. MN. Farmland

PUBLIC AUCTION

Thursday March 3, 2016 Sale Time 10:00 am
More Information, Maps & Land Data at www.elbersauction.com

Location of Land: From Hardwick Corner on Highway 75 go 2 Miles West on Co. RD 7 (201th St.) & 1/2 mile north on 110th Ave.

Land will be sold at the farm location. Watch for Auction Signs.

LEGAL DESCRIPTION: S 1/2 of NE 1/4, Section-29, Twp-104N, Range 45W, Denver Township, Rock Co. MN.

GENERAL DESCRIPTION: This is a very productive 80 +/- acre tract that consists of 61.45 acres of tillable acres, 16.38 acres of pasture and 2.17 acres of roadway and ditches. According to Rock Co. Assessors Office this tract has a CER rating of 94.48. Tract does not contain a wetland. Predominate soil types are Splittrock silty clay loam, Whitewood silty clay loam and Ihlen silty clay loam. There is a 6" tile that runs along the north side of waterway.

CORN/SOYBEAN BASE & YIELD: The corn base on this tract is 31.3 acres with a PLC Yield of 165 bu. Soybean base of 31.10 acres with a PLC Yield of 43 bu.

TAXES: Current Real Estate Taxes are \$2088.00. Taxes reflect Agri- Homestead status. Taxes will pro-rated to date of possession

POSSESSION: Land will be available for the 2016 crop year with possession given on March 1, 2016

TERMS: 15% down (non-refundable) immediately after auction. Buyer will be required to sign a purchase agreement at time of auction with the balance due and payable on or before April 1, 2016 when a clear and marketable abstract of title and warranty deed will be delivered to the buyer. Elbers Auction Service represents the sellers only in this transaction. Property is sold being offered "AS IS" with no warranty given or implied as to the condition or use of property. This property is offered as a cash sale with no financing contingency. Although every effort has been made to the accuracy of information given all potential buyers are encouraged to verify all information given. Property will be offered for sale subject to any easements, restrictions, reservations or right a way easement of record if any. Sale of property is subject to owner's confirmation. Any announcements made the day of auction will take precedence over any printed material. Informational booklets & maps are available on request, by contacting one of the auctioneers or by visiting website at www.elbersauction.com

AUCTIONEERS NOTE: It is a pleasure for us to offer this very attractive tract of farmland. This is an excellent opportunity to purchase a very highly productive tract of farmland that would be a great addition to your current farming operation or as an investment in some farmland. If you are in the market for a very desirable tract of farmland you don't want to miss this auction

Lynn & Lois Petersen Owners
Damon T. Eisma, Attorney for seller
Elbers Auction Service
"Quality Auctions Since 1988"
P.O. Box 196 Hills, Minnesota 56138

Keith Elbers 507-962-3433 or 920-6131 www.elbersauction.com Clark Ahders 712-470-4700

Interested in Advertising?
Call Rick or Chantel to advertise in next week's Announcer

283-2333

Read us Online!
www.star-herald.com

Get your news, sports and all the latest events in Rock County.
www.Star-Herald.com



- Ready built homes •Andersen windows •Cabinets
- Siding •Doors •Quality lumber at great prices (compare)
- All Homes are state inspected to meet requirements
- Custom Blueprinting •Delivery Available
- No need to wait in lines

Call Randy or Harlan about your plans

Country Lumber

507-442-4821 • Box 247 • Leota, MN

LAND FOR SALE

LEGAL: Three tracts of productive land for sale as follows:

Tract 1: Approximately 160 acres located in the SE1/4 of 6-104-44, Rock County, MN.

Tract 2: Approximately 160 acres located in the NE1/4 of 7-104-44, Rock County, MN.

Tract 3: Approximately 149.88 acres located in the NW1/4 of 7-104-44, Rock County, MN.

TERMS: Sealed bids will be accepted until 5:00 p.m., February 26, 2016, at 130 East Main, Luverne, MN. All bidders will have the opportunity to submit additional bids until property is sold. Tracts will be sold individually. Highest bidder will be required to sign a Purchase Agreement with ten percent (10%) non-refundable earnest money down payment on the date of the sale and the balance at closing on or by March 31, 2016.

Sale is subject to approval by the Trustees of the Modesto & Janis J. Salazar Revocable Trust and the Schmidt Family Trust. For further details contact Paul Vis or Jennifer Eisma-Reinke, Eisma & Eisma, Attorneys at Law, (507) 283-4828.

WINTER deals at Connell's

310 N Kniss, Luverne, MN
www.connellcar.com
507-283-2341 • 800-884-2341

SALESMAN, THOMAS STERRETT 920-8859

CONNELL'S GREAT DEALS OF THE WEEK

 <p>2012 BUICK ENCLAVE 3.6L, AWD, very clean, lots of car for the money, pearl, 109K \$19,900</p>	 <p>2013 CHEVY EQUINOX LT, 2.4L, AWD, htd seats, very clean, blue, 85K WAS \$17,650 \$15,900</p>	 <p>2014 GMC SIERRA 1500 SLT, 5.3L, 4X4, htd leather, back-up camera, Bose, black, 39K WAS \$36,950 \$37,900</p>
 <p>2012 LINCOLN MKX AWD, heated & cooled seats, lots of extras, black, 50K WAS \$25,750 \$24,900</p>	 <p>2013 RAM 1500 Laramie, Longhorn Edition, 5.7L, 4X4, loaded, black, 57K WAS \$35,500 \$32,900</p>	 <p>2013 CHRYSLER 300 3.6L, AWD, navigation, leather, black beauty, 41K WAS \$21,990 \$19,900</p>
 <p>2015 DODGE GRAND CARAVAN 3.1L, FWD, bucket seats, clean, gray, 47K \$18,900</p>	 <p>2009 CHEVY IMPALA LS, 3.5, V6, FWD, great gas mileage, very clean, charcoal, 100K \$8,900</p>	 <p>2012 CHEVY SILVERADO 1500 LT2, 5.3L, 4X4, htd leather, new tires, silver, 73K \$27,500</p>

Need new tires for your winter driving? Give us a call.

FORD SERVICE

STOP IN FOR **FREE** ALIGNMENT CHECK

THE WORKS™

- SYNTHETIC BLEND OIL CHANGE
- TIRE ROTATION AND PRESSURE CHECK
- BRAKE INSPECTION • MULTI-POINT INSPECTION
- FLUID TOP-OFF • BATTERY TEST
- FILTER CHECK
- BELTS AND HOSES CHECK

\$39.95 OR LESS - \$10.00 REBATE BY MAIL

\$29.95 OR LESS

UP TO 5 QTS.

WE SERVICE ALL MAKES & MODELS

Herman Ford
LIVERNE, MN
Since 1932
hermanmotor.com
624 Kniss Ave • Luverne, MN
507-283-4427 • 855-383-4427

LAND AUCTION

60 Acres of High Producing Springwater Township Rock County Minnesota Land

We will offer the following real property at auction at the land located from the Pipestone-Jasper Exit #1 on I-90 - 9 1/2 miles north on Hwy. #23 to 181st St., then 2 1/2 miles east; from Garretson, SD - 3 miles east to the Jct. of 161st St. & Hwy. #23, then 2 miles north on Hwy. #23 and 2 1/2 miles east on 181st St.; or from Jasper, MN - approx. 7 miles south on Hwy. #23 and 2 1/2 miles east on 181st St.

THURSDAY FEBRUARY 25, 2016 SALE TIME: 10:00 AM

This auction presents a great opportunity to purchase a very well located +/-60 acre parcel of land that is located in one of the leading agricultural areas of Southwestern Minnesota. This farm has excellent soils, very good eye appeal and an extremely high percentage tillable. According to FSA information this +/-60 acre farm has approximately 59.31 acres of cropland with a 38.18 acre corn base with a 138 bu. PLC yield and a 20.62 acre soybean base with a 44 bu. PLC yield, additionally FSA indicates that this farm has approx. 17.3 acres sowed to alfalfa and in 2015 the remainder was planted to corn. According to the Rock Co. Assessor this parcel has an excellent CER of 90.97, also information obtained from Surety Agri Data, Inc. indicates that this farm has a very high weighted average productivity index of 92.4 with the cropland with approx. 88% comprised predominately of Class I & II soils, with the remainder being Class III soil. The general topography of this land is gently rolling to rolling. The total 2015 non-homestead RE tax amount on this property payable in 2015 were \$2,190.00. If you are in the market for a productive parcel of land located in an excellent farming area of Rock County, MN that has potential to serve as a terrific addition to an area row crop farming operation or as an investment, then make plans to inspect this property and be in attendance at this auction.

LEGAL DESC.: The W 1/2 W 1/2 NE 1/4, and the W 1/2 E 1/2 W 1/2 NE 1/4, Sec. 8, T. 103N., R. 46W., (Springwater Twp.), Rock Co., MN.

TERMS: Cash - A 15% nonrefundable earnest money payment on the day of the sale and the balance on or before April 8, 2016. The purchaser will receive full possession of this land at closing and may operate or lease the property for the 2016 crop year. Marketable Title will be conveyed and abstracts of title continued to date will be provided to the buyer for examination prior to closing. All of the RE taxes payable in 2015 will be paid by the sellers with the buyer(s) to be responsible for payment of all of the RE taxes due & payable in 2016. The sellers do not warranty or guarantee that existing fences lie on the true boundary and any new fencing, if any, will be the responsibility of the purchaser pursuant to MN statutes. FSA cropland acres, yields, bases & other information are estimated and subject to County Committee approval. This property is sold based on the acres as stated on the county tax records with the acres understood to be "more or less" and is sold subject to existing easements, restrictions, reservations or highways of record, if any, as well as any or all applicable county zoning ordinances. Information contained herein is deemed to be correct, but is not guaranteed. The RE licensees/auctioneers in this transaction stipulate that they are acting as agents for the sellers. Sold subject to confirmation of the Owners.

For additional information contact the auctioneers or see www.suttonauction.com

PATRICIA K. McLEAN and the THOMAS M. McLEAN TRUST, Owners

- Donald Klosterbuer - Klosterbuer & Haubrich Law Firm
- Attorney Closing Agent for the Sellers - Luverne, MN - ph. 507-283-9111

CHUCK SUTTON - Auctioneer & Land Broker - Lic. #59-26 -
Sioux Falls, SD - ph. 605-336-6315, Pipestone, MN - ph. 507-825-3389
& Flandreau, SD - ph. 605-997-3777 and
DEAN STOLTENBERG - Auctioneer - Lic. #59-38 - Jasper, MN - ph. 507-348-7352

SUBSCRIBE TO THE STAR HERALD ONLINE EDITION!

Only \$13 for current Star Herald Print Subscribers.
Call 283-2333 for more details.

Find it here!

Here's My Gard

Your Quick & Easy Guide to Area Businesses



ROCK COUNTY CHIROPRACTIC

- Men, Women & Children's Health
- Custom Orthotics • Kinesiotape • Athletic Care • Massage Therapy • Work & Auto Injuries • Postural Restoration


DR. MICHAEL SMITH
www.rockcountychiropractic.com
283-2561 • 103 E. MAIN, LIVERNE
Monday 7:30 a.m. - 6 p.m. • Tuesday 7:30 a.m. - 3 p.m.
Wednesday 7:30 a.m. - 6 p.m. • Thursday 7:30 a.m. - 1 p.m.
Friday 7:30 a.m. - 5 p.m.

Most Insurance Accepted

Hiding Places Dog Boarding

Lonna & Todd Heideman
Owners

25773 Ahlers Avenue
Adrian, MN 56110
507-220-0990 • 507-220-0991



Loosbrock Electrical Construction, LLC

Licensed • Bonded • Insured
Residential • Commercial • Industrial • Agriculture

Scott Loosbrock
Owner

507-360-5418 • scott@loosbrockelectric.com
www.loosbrockelectric.com



CLEVERINGA CONSTRUCTION
507-920-5631

• For All Your Building Needs • Additions • New or Remodel
www.cleveringaconstruction.com

Merlin Cleveringa 879 - 100th Ave., Luverne, MN
507-283-2698 Home Lic. # BC-20552185



Stroeh's Auto Center

We provide complete auto care for any make or model vehicle, from oil changes to engine repairs

Alan Stroeh • 321 E Main St. • Luverne • 283-4226
www.stroehsauto.com

Van Aartsen Construction Inc.

Darrel Van Aartsen, Owner
507-920-9499

- New Home & Remodeling
- Commercial and Farm Buildings

Call for an Estimate

Builder of Casfin Drive and many other beautiful homes in the area.



McClure
PLUMBING, HEATING, AIR CONDITIONING, INC.
412 S. Kniss • Luverne, MN • 507-449-2828

Jerry Buss Lic. #002732PM **RAIN BIRD** Carrier
Troy Buss Lic. #005573PM **LENNOX** BRADFORD WHITE

SD # Luv-MN-R1117-98-1262C
• Licensed, Bonded and Insured in Minnesota and South Dakota •

Where health and wellness come naturally

Dr. Reynolds
Hours: Monday: 8:00 - 6:00; Tuesday: 8:00 - 5:00; Wednesday: 9:00 - 7:00; Friday: 8:00 - 5:00; Saturday: 8:00 - 12:00

Dr. Deweerd
Hours: Monday: 8:00 - 6:00; Thursday: 8:00 - 12:00

DR. ROSS REYNOLDS, DC
DR. PAULETTE DEWEERD, DC
712-472-2481
www.Rapidschiro.com

RAPIDS CHIROPRACTIC
206 S. UNION ST., ROCK RAPIDS - ON HWY. 75



FRANKEN CONSTRUCTION

Travis Franken, Lic #20627458 & Insured
1332 181st St., Luverne
507-920-8253

REMODELING • NEW ADDITIONS • SIDING
DECKING • WINDOW/DOOR REPLACEMENT
GARAGE DOORS • CONCRETE
NO JOB IS TOO SMALL!!!

Call today for a FREE ESTIMATE.

Tree & Stump Removal

FREE ESTIMATES

Traci Davis 605-759-7880
Mike Davis 507-227-7068

New Construction • Home Additions • Interior & Exterior
Home Remodeling • Windows • Siding • Drywall

Oehlerts & Son Construction

30 Years Experience
Kevin Oehlerts, Luverne,
www.OehlertsAndSonConstruction.com
507-673-2206 Lic. # BC064924



Rock County EYE CLINIC

Dr. Sandra Carman

507-283-2345

102 N. Freeman Ave., Luverne, Minnesota

LUVERNE HEALTH & WELLNESS
Codie Zeutenhorst, DC

- Chiropractic Care
- Family Care
- Kinesiotape
- Sports Injuries
- Auto & Work Injuries

Massage Available 5 Days A Week
Kris Van Der Brink M.T. & Amy Rosales M.T.

507.449.4400
www.luvernechiro.com
109 S Freeman Ave, Luverne MN

Sanford Luverne is offering a \$2000 healthcare scholarship

This scholarship opportunity is open to any student who has been formally accepted into a healthcare career program (general enrollment is not eligible). A 3.0 grade point average is also required. This scholarship is not tied to an employment commitment. Applications can be picked up from the front desk of the Sanford Luverne Clinic, located at 1600 N. Kniss Ave.

Deadline to apply is **March 4, 2016.**



P L E X U S Do you or a LOVED one suffer from:

Blood Pressure Problems
High or Low Blood Pressure
High Cholesterol or Triglycerides
Fibromyalgia
Rheumatoid Arthritis
Migraines
Acid Reflux
Thyroid Issues
Gout
Low Oxygen Levels
Acne/Skin Irritations
Struggles to lose weight
No will power over food

SLIM

Informational meetings
Tuesday, Feb. 16 & Tuesday, Feb 23
7p.m. | GrandStay Hotel

HOSTED BY SHEILA MEYER,
LUVERNE 507-920-0738

Taste our samples!

NOTICE TO THE POLICYHOLDERS OF BEAVER CREEK MUTUAL INSURANCE COMPANY

Any policyholder wishing to be a candidate for the Office of Director must file such notice in writing with the Secretary, at the Home Office of the Company in Luverne, MN, at least thirty days prior to the April 5, 2016 Annual meeting of the Company, as provided by the Article of Incorporation. Last day for filing will be March 6, 2016.

BY ORDER OF THE DIRECTORS
Bernard Uilk, President
Mike Engesser, Secretary

GEORGE, IOWA HOME AND PERSONAL PROPERTY TO BE OFFERED AT: PUBLIC AUCTION

Saturday Morning February 20, 2016

Real Estate Sale Time: 9:30 AM

Real Estate: Located at 109 West Iowa Ave or 3 blocks west and 1 block south of Frontier Bank in George, Iowa.
(Home to be offered at this location)

GENERAL DESCRIPTION: This is a 3 bedroom, 1 1/2 story home located on a corner lot only one block off of main street in George, Iowa. This home has 2 bedrooms on the main floor with closets, large living room, large kitchen with steel cabinets, bathroom with tub/shower, vanity, and linen closet. The upper story consists of 1 large bedroom, large hallway with storage, and hardwood flooring. The home also has full cement block basement with Lennox pulse furnace and central air conditioning, new water heater, washer & dryer hookups, restroom, shower, and soft water hookup. This property also has an unattached 20'x 24' garage with door opener, full cement floor, and drain way. Both the home and garage have vinyl siding.

LEGAL DESCRIPTION: George O.T., the North 95' of Lots 1 and 2 and the West 12' of North 95' of Lot 3, Block 9.

TAXES: The current real estate taxes are \$686 annually and will be prorated to the date of possession.

POSSESSION: April 1, 2016

INSPECTION OF THE REAL ESTATE: For inspection of the home, please contact the auctioneers listed below.

TERMS OF THE REAL ESTATE: 20% down immediately after the auction of the Real Estate with the balance due and payable on or before April 1, 2016 when clear and marketable title will be given to the buyer(s). (Sale of the Real Estate subject to District Court approval.)

Personal Property Sale Time: 10:30 AM

Personal Property: Will be offered at the George Community Center located on Main Street in George, Iowa

SALE ORDER: Starting at 10:30 AM on the automobiles and motorcycles followed by the guns, toys and collectables, tools and furniture.

PICKUPS, CAR, AND MINI-VAN: 1995 Chevrolet Silverado C1500 2wd regular cab, short box pickup w/ 305 V8 engine, 5 speed manual transmission, cloth interior, aluminum wheels w/ good tires, original rally wheels with hub caps and beauty rings, bright red in color, 215,000 miles (Truck has been restored several years ago, Runs and Drives Great); 1996 Chevrolet Silverado K1500 4x4 extended cab, short box pickup w/ 350 V8 engine, auto transmission, cloth interior, bright red in color, 185,000 miles (Runs Great); 2001 Chevrolet Cavalier 4 door car w/ auto transmission, 4 cyl engine, cloth interior, aftermarker aluminum wheel, 103,000 miles, bright red in color (Runs Great); 1993 Dodge Caravan w/ 6 cyl engine, auto transmission, power windows and locks, silver in color, 173,000 miles (Consigned by Greg Kruger, 712-470-5711)

MOTORCYCLES: 2001 Indian 1250cc motorcycle w/ windshield and bags, 9130 miles (Sharp); 1990 Kawasaki Vulcan 800cc motorcycle w/ windshield and saddle bags, 27,009 miles (Sharp); ZR motorcycle helmet; Set of Indian/Harley-Davidson saddle bags; Indian windshield and handle bars

TRAILER: Carry-On 4'x 6' trailer w/ mesh floor, full ramp, wooden sides, and lights (Like New)

GUNS: Rifles: Winchester 1886 45-70 cal (1890s vintage); Winchester 94AE Legacy .45 LC cal; Winchester 9422 .22 LR cal; Henry Lever 22 Mag .22 cal; Henry Truckers Limited Edition .22 LR cal; Navy Arms 92 Boarder Rifle 44-40 cal; Chaparral 1876 45-75 cal rifle; Uberti Henry model 44-40 cal; Uberti 66 Yellowboy 44-40 cal; Uberti 73 Sporting Special, Short .45 LC cal; Uberti Highwall 45-70 cal; Uberti Colt Lightning .45 LC cal; Uberti Silver Lever Action .22 LR cal; Stevens 87A Semi-Auto .22 LR cal

Pistols: Colt Cowboy .45 LC cal; Colt Peacemaker .22 LR/WMR; Ruger Vaquero .45 LC cal; Ruger Single-Six .22 LR/WMR; Uberti 1873 Cattleman .22 LR/WMR (Similar to Colt SA); Cimarron Outlaw .45 LC cal (Similar to Remington); Cimarron Regulator 44-40 cal (Similar to Colt SA); Cimarron 1890 Outlaw 44-40 cal (Similar to Colt SA); Buyers must have proper FFL documentation to purchase these pistols on the day of the auction.

Shotguns: Winchester 1300 12 gauge; IHZ Russian 12 gauge coach gun; IAC 1887 12 gauge

Black Powder: Uberti "Aces and Eights" .44 cal pistol; 2-CVA Nickel '51 Navy .44 cal pistols; CVA 1851 Navy blued .44 cal pistol w/ removable butt stock; Uberti 1860 Army blued .44 cal pistol; Uberti 1858 Remington Army .44 cal pistol; Uberti 1860 Army (Nickel/Gold) .44 cal pistol

Modern: Walther Colt Defender .177 CO2 BB gun; Smith & Wesson SA 22 .22 LR cal w/ case, scope, and 3 magazines; Winchester 1028 .177 pellet air rifle w/ scope; Kimber Custom II .45 ACP

ACCESSORIES: 4-Western style gun belts; 2-US Army issue holsters for Colt 1911; Belt style ammo bandolier for rifle ammo; Set of 4 US Marshal badges (framed); 2-oak gun cabinets w/ bottom drawers; Pistol display w/ drawer; Steel and plastic ammo boxes

AMMUNITION: 20 round box of Winchester 270; 5-20 round boxes of Winchester 30-30; 3-20 round boxes of 303 British; 4-50 round boxes of 38-40; 20 round box of 38-55; 20 round box of 40-65; 2-20 round boxes of 45-70; 40 round box of 45-75; 3-100 round boxes of 12 gauge trap loads; 4-25 round boxes of collectable 12 gauge; 50 round box of .38 long Colt (Pistol); 8-50 round boxes of .45 long Colt (Pistol); 1750 rounds of .22 LR rimfire; 450 rounds of .22 WMR rimfire

JOHN WAYNE, WINCHESTER, AND OTHER WESTERN COLLECTABLES: John Wayne folding table, cookie jars, mugs, tins, knives, and pictures; Winchester books, advertising signs (reproduction), blankets, tins, clock, belt buckles, and caps; Toy western steam train w/ advertising boxcars including Winchester; Many western books; Western figurines; Cover wagon lamp; Stagecoach lamp; Western pictures; Buffalo Bill picture; Colt belt buckles; Hesston rodeo belt buckles; Horse head book ends; Guitar in case; Sturgis collectables

TOYS AND COLLECTABLES: IH and Case IH Tractors (Many are Precision, New in Box): 1206 w/ WF, factory black in color, matching 550 5 bottom steerable plow; Super M; Straight M; Super H; Super C; MD w/ loader; 400 w/ 4 row front mounted cultivator; 560 w/ 2MH picker; 560 w/ man; Little Genius 2 bottom plow; F-20 on rubber; Gray F-12; Red F-12; Red 22-36; 460 utility; 200 spreader; Gravity wagon; 460 gas; 1206 w/ wide front; 1206 Wheatland; 826 w/ wide front; 470 disk; 806 w/ narrow front; 666 Hydro w/ wide front; 656 gas w/ narrow front; 544 Hydro w/ IH 31 sickle mower; 706 w/ narrow front and 540 4 bottom plow; Titan on steel; 3588 2+2; 1566; 400; 330 utility; 350 w/ narrow front; 350 utility; A; B; 200 w/ narrow front; 300 w/ narrow front; 450; 1086 w/ duals and quick hitch; 1468 w/ duals and front weights; 5288 w/ duals and front weights; 7120 Magnum; 8920 Magnum w/ front weights; 3294 MFWD; 1486 Red Power; 966 w/ 3pt; 544 utility w/ 3pt and loader; 706 w/ Westendorf loader complete with hoses, wide front; 1256 w/ white cab; 300 utility; 404 w/ narrow front, 3pt, front weights; 684 Canadian; 1456 w/ white cab; 1906 Titan (Farm Progress Show edition); 1466 modified puller w/chrome wheels; 2 row, fast hitch planter; 12-suitcase weights for Magnum; 12-suitcase weights for IH; 1586; 1468 w/ red cab; 3688; 806 w/ duals, wide front; 1256 Gold Demonstrator; MX240 MFWD w/ duals; Magnum Mark 50 edition; H Farmall lamp w/ figurine of a pig; 9380 Steiger 4wd w/ duals; 460 utility w/ fast hitch; Plastic 1250 grinder/mixer; 1935 IH panel truck; Farmall plates; Case IH 530B disk ripper

Other Toy Tractors and Misc: Oliver 1950T (Autographed by Michelle Rook of WNAX radio); Oliver 1650 w/ cab; White 4 row planter; Ford/NH MFWD tractor; JD 60 w/ man; McCormick MTX140 MFWD

DIE-CAST MODEL CARS AND TRUCKS: Chevrolet Malibu, Monte Carlo, Impala, '55, '56, and '57 Bel-Airs, El Caminos, '57 Fire Chief car, '55 pickup, '46 truck, '49 pickup, '99 Silverado Z-71, dually extended cab pickup, '69 pickup

Toy Trucks: Several semi grain, livestock, freight, and oil trucks; Freightliner straight truck for grain; Nylint dump truck; 2-Tonka dump trucks; Military tanker truck; Ford stub-nosed tractor w/ car transport trailer and grain trailer

OTHER TOY TRUCKS, PLANE COLLECTION, AND MISC: 1970 Buick; 1950 Ford F-1 pickup; Over smaller trucks and semis; Ford pickup w/ aluminum livestock trailer; Harley Davidson motorcycle; Many model planes from WWII to present; Several mirrored display cases; Cap collection; Farmall mailbox (New in Box)

GENERATOR, TOOLS, AND ETC: Craftsman 4000 gas powered generator; Schumacher battery charger; Redi-Heater (multi-fuel); Shop-Vacs; Weed Eater gas leaf blower; Skil 7 1/4" saw (New in Box); Sets of KT open and boxed end wrenches (Standard and Metric); Makita grinder; Vise grips; 4 ton cable hoist (new); 1/2" deep well sockets; 20T bottle jack; 2T floor jack; Halogen shop light; 1/4" and 3/8" sets of KT sockets; Crescent socket set; Hammers; Screwdrivers; Misc wrenches; 3 sets of jumper cables; 25' garden hose; Hand and garden tools; 5 extension cords (25-100 ft); Numerous new gas cans; Hand cart; Saw horses; 6' step ladder; 2 new sets of 24.5 truck chains

FURNITURE AND HOUSEHOLD ITEMS: Oak futon/bed w/ mattress (Near New); Round drop leaf table w/ 2 chairs; Oak dining table w/ 4 chairs; Glider/rocker w/ footstool; 2 bar stools; Brass floor lamp; Table lamps; Touch lamps; End tables; Coffee table; Night stand; 4 drawer dresser; 2-book cases; Oak entertainment center; Dirt Devil upright vacuum; Wall clock; Terry cloth towels; Many new blankets; Ice chest; 3 trunks; Wooden day bed/futon (New in Box); Osculating fan on stand; Wall pencil sharpener

INSPECTION OF THE PERSONAL PROPERTY: Inspection of the personal property will take place on Friday Evening February 19 from 5 to 7 PM at the George Community Center on Main Street in George, Iowa and also before the start of the auction.

TERMS ON THE PERSONAL PROPERTY: Cash or good check day of sale. Not responsible for accidents or theft. NO guarantees.

For pictures of the home and personal property including guns and toys, please visit www.ahders.com.

Curtis L. (Curt) Kruger Estate, owner

For More Information, Contact Henry Kruger at 712-724-6293 or 712-461-2466

Harold D. Dawson, Attorney for the Estate

AUCTIONEERS:

Clark Ahders
Rock Rapids, IA
712-472-2005 or 712-470-4700

Keith Elbers
Hills, MN
507-962-3433

CITY OF MAGNOLIA ORDINANCE NO. 119

AN ORDINANCE GRANTING A FRANCHISE TO ALLIANCE COMMUNICATIONS COOPERATIVE, INC. ("GRANTEE"), ITS SUCCESSORS AND ASSIGNS, TO ERECT, OPERATE AND MAINTAIN A CABLE TELEVISION SYSTEM IN THOSE CERTAIN PORTIONS OF CITY OF MAGNOLIA, MINNESOTA, SETTING FORTH CONDITIONS ACCOMPANYING THE GRANT OF FRANCHISE; PROVIDING FOR CITY REGULATIONS AND USE THE CABLE TELEVISION SYSTEM.

DENIS MADISON, MAYOR

THE ORDINANCE IN ITS ENTIRETY IS AVAILABLE FOR REVIEW AT THE MAGNOLIA CITY HALL WILL BE ACTED ON AT THE MARCH 14 MEETING AT 5 PM.

RED ROCK TOWNSHIP NOTICE OF ANNUAL MEETING

The citizens of the Township of Red Rock, in the County Minnehaha, South Dakota, and who are qualified to vote at general elections, are hereby notified that the Annual Township Meeting for said Township will be held at the Brandon Pizza Ranch on Tuesday, March 1, 2016, at 7:00 pm, of the said day, for the following purposes: To elect one Supervisor; One Township Clerk; One Township Treasurer; and do any other business proper to be done at said meeting when convened.

Given under my hand this 9th day of February, 2016.

James Anderson
Township Clerk

NOTICE OF ANNUAL TOWNSHIP MEETING

The citizens of the Township of Valley Springs in the County of Minnehaha, South Dakota, and who are qualified to vote at general elections, are hereby notified that the Annual Township Meeting for said Township will be held at the Valley Springs Fire Station in said township, on Tuesday, the 1st day of March next, between the hours of 7:00 pm and 8:30 pm of the said day, for the following purposes: To elect One Supervisor; One Township Clerk; One Township Treasurer; and discuss the possibility of opting out of the tax limitation for the purpose of buying a motor grader and do any other business proper to be done at said meeting when convened. In case of inclement weather, the annual meeting will be held one week later on March 8.

Given under my hand this 10th day of February 2016.

Glenn H. Scott
Township Clerk

Do you have damage on your property from storm events?



Rock County SWCD/Land Management can apply for more state money to assist with repairs and new conservation practices.

Call or stop by Land Management.
507-283-8862 ext. 4

dining & entertainment

Adult Prom of the Decades

**Sat., Feb 27
8pm-midnight
Forster
Community
Center**

Must be 21 or older
to attend

D.J., snacks, prizes, photo booth, fun competitions, drinks served by Rock Rapids Fire Department
Wear formal wear from any decade

**\$10 per person for advance tickets
purchased at Kids Club (Feb. 8-23)
\$15 per person at the door**

sponsored by Rock Rapids Kids Club

WEEKEND SPECIAL

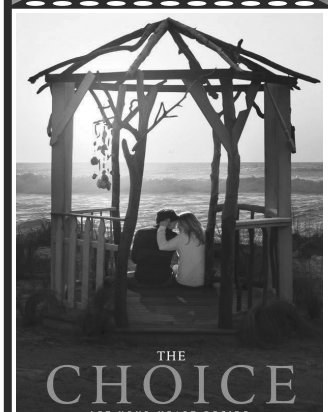
Friday, February 19th
Grilled Salmon
Choice of Potato, Soup or Salad & Texas Toast

Saturday, February 20th
Prime Rib
Choice of Potato, Soup or Salad & Texas Toast

Old 77... Your Dell Rapids Craft Beer Head Quarters...
Now featuring a variety of 15 tap beers. Selection Changes Weekly!



24654 475th Ave
Dell Rapids, SD
605-428-4511
www.old77barandgrille.com



FRI., FEB. 26 - 7 P.M.
SAT., FEB. 27 - 7 P.M.
SUN., FEB. 28 - 2 P.M.

Check our web site for updates
www.palacetheatre.us
Find us on Facebook

*The Daily News
of Rock County.*
star-herald.com

Luverne Music Boosters 36th Annual



LUVERNE HIGH SCHOOL GYMNASIUM
SATURDAY, FEB. 20 • 5 - 9 P.M.



THE EAGLES CLUB

Call the Club Manager at 283-9661 if you're interested in booking the Eagles Club for wedding receptions, class reunions, parties, etc.

312 W. Harrison, Luverne • Phone 283-9661 • Lic #00258

THURSDAY NIGHTS

14 28 45 50 61

BINGO

6:30 pm

45	50	61
32	47	69
11	19	FREE 55 63
5	16	39 48 72

FRIDAY, FEBRUARY 19

Pork Chop Dinner

6 pm

\$9 meal

(Includes pork chop, baked potato, corn & bread)

New Prairie Insulation, Inc.

Serving Residences & Contractors
FREE ESTIMATES
---Insulation---

Arnold Brondsema
Beaver Creek, MN
507-673-2548 or
1-800-232-7089

Loans, leases, and crop insurance



Pat Barnett
866-601-0506

AgStar
Financial Services, A.C.A.
AgStar.com

AgStar Financial Services is an equal opportunity employer and provider.

**RECYCLE
NEWSPRINT!**

IT'S SEEN BETTER DAYS.

Your old refrigerator doesn't look too bad, and might still hold its weight in family photos and school art projects. But don't let that old fridge fool you – it could be costing you more than you realize.

By properly recycling your old refrigerator and replacing it with a new ENERGY STAR® certified refrigerator, you can save between \$35 and \$300 on energy costs over its lifetime.

Luverne Municipal Utility offers:

- **\$50 rebate**
for a new ENERGY STAR refrigerator when you recycle an old one.
- **\$20 rebate**
for a new ENERGY STAR model, with no recycling.

To learn more about rebates for refrigerators and many other ENERGY STAR products, call Luverne Municipal Utility at (507) 449-2388 or visit: brightenergysolutions.com.

Luverne

305 E Luverne, PO Box 659
Luverne, MN 56156
(507) 449-2388



Great Selection & Huge Price Reductions!

SWEET

Indoor sale

Feb 13

JUST FOR YOU

8am-4pm

Papik
MOTORS
I-90 Luverne, MN

507-283-9171, 800-634-7701, papik.com

the classifieds

To place a classified ad in the Luverne Announcer, call 283-2333, stop by our office at 117 W. Main, Luverne, or visit www.star-herald.com.

EMPLOYMENT

SON-D-FARMS
ADRIAN

is hiring General Farm, Hog, Field Work, Truck Driver, Maintenance person & Mill person. Experience wanted but willing to train. PTO benefits. Call (507) 483-2245, 370-1590 or e-mail jessihoffman@sondfarms.com

EMPLOYMENT

EDF Renewable Energy is looking for a Wind Technician for our wind park in Chandler, Minnesota. Please apply at www.edf-re.com/about/careers. (2.14-3.3)

EMPLOYMENT

Full and Part-time Child Care Assistant Positions Available. Must be 16 years or older. Passion for children required. We are excited about our new facility opening in the summer of 2016. Contact for an application: Desiree Kopp Rock Rapids Kid's Club Director 309 North Story Street Rock Rapids, IA 51246. 712-472-2686 kidsclubdirector@hickorytech.net (2.7-2.28)

EMPLOYMENT

CHS Eastern Farmers Help Wanted: part-time feed mill and grain elevator cleaner. Job includes sweeping floors, ledges, walls, etc. Can't be afraid of heights. Call Gary at 507-283-4418 for an application and interview. EOE (1.31-2.18)

EMPLOYMENT

HELP WANTED

The Tuff Memorial Home in Hills, MN is looking for hard working, dependable individuals to join our team in caring for the elderly.

Positions include the following: **Certified Nurse Aides, Full and Part-Time day shifts** (6:00 AM to 2:30 PM) and **evening shifts** (2:15 PM to 10:15 PM), which includes every other weekend and every other holiday.

Trained Medication Aides, Part-Time evening shifts (3:00 PM to 10:00 PM), which includes every other weekend and every other holiday.

Please contact Dana Dahlquist or Jody DeBoer at 507-962-3275 or email at danadah1749@yahoo.com.

Benefits
Competitive Wage
Pension Plan
Friendly Atmosphere

TUFF MEMORIAL
505 E 4th St | Hills, MN
507-962-3275
"A Home with a Heart"

EMPLOYMENT

NEED EXTRA CASH?

Luverne Announcer Carriers needed for **LUVERNE**

Call **283-2333** or stop in at the Announcer office

Full-Time & Part-Time Child Care Assistant Positions available

Rock Rapids Kids Club Must be 16 years of age or older. Passion for children required. We are excited about our new facility opening summer 2016. Contact for an application: **Desiree Kopp Rock Rapids Kids Club Director** 309 North Story Street Rock Rapids, IA 51246 712-472-2686 kidsclubdirector@hickorytech.net

Law Enforcement Position Available: South Dakota Game Fish & Parks is currently seeking SD Certified Law Enforcement Park Rangers to work temporary summer shifts of 8-40 hours/week in the State Parks within Minnehaha, Lincoln, and McCook Counties. Part-time and full-time positions are available. Position is advertised out of the Canton (Newton Hills State Park) location, req. #SO6-7587. Starting salary of \$15.25/hour. Information and applications can be found online at: <https://bhr.sd.gov/workforus/gfp.aspx> or by calling: Palisades State Park at 605-594-3824 or Newton Hills State Park at 605-987-2263. EOE (2.14-3.3)

Nursing Assistant-Parkview Manor has openings for full-time nurse aides with benefits to include: health insurance, public retirement plan, and holiday pay. Part-time positions also available. New Wages \$11.90/hr. \$2000 scholarships available for students. Will provide training or pay for experience. Contact Darnell Krull, 308 Sherman Ave., Ellsworth, MN 56129 or call (507) 967-2388. (tc)

SUMMER JOBS: Looking for a fun and rewarding summer job that looks great on your resume? Applications are being accepted for seasonal summer employment at: Palisades State Park (Garretson) and Big Sioux Rec. Area (Brandon). Campground attendant, security, supervisor, education, maintenance, crew leader, and law enforcement. Crew Leader position will work from April 1 through October 31. Application deadline 2/26/2016. Must be at least 17 years old by date of hire. Salaries from \$9.35-13.92/hour. Information and applications can be found online at: <https://bhr.sd.gov/workforus/gfp.aspx>. Questions can be answered at: Palisades and Big Sioux - 605-594-3824. EOE (12.27-2.25)

Help Wanted: Welder/Fabricator to work in machine shop. Experience with farm equipment and trailers preferred. Must be dependable and willing to work 50+ hours per week. Wages D.O.E. Call 507-227-1114 (2.14-3.3)

HELP WANTED

The Tuff Memorial Home in Hills, MN is looking for Dietary Supervisor to head our Dietary Department.

This is a Full-Time position working Monday through Friday and offers a full benefit package. We would prefer someone that has completed the Certified Dietary Food Manager course but will accept a person that is willing to work to get that certification.

Please contact Dana Dahlquist at 507-962-3275 or email danadah1749@yahoo.com.

Benefits
Competitive Wage
Pension Plan
Friendly Atmosphere

TUFF MEMORIAL
505 E 4th St | Hills, MN
507-962-3275
"A Home with a Heart"

Your Calling.
YOUR PLACE.

Are you looking for a rewarding career in healthcare? Sanford Luverne has the perfect position for you. We are accepting application for the following positions:

Respiratory Therapist—Full or part time	Rehab Aide—As needed
Environmental Spec. — As needed	RN—Part time
Home Health Aide — As needed	Cook—Part time & As needed
Receptionist—As needed	Clinic MA/LPN—Full time
Physical Therapist or PTA—Part time	Clinic LPN—As Needed
Hospice LPN/TMA—Full time & As needed	Patient Care Tech—Full Time

These positions offer a challenging opportunity to be part of a recognized healthcare team and offer a competitive wage and benefits package. Please apply online: www.sanfordhealth.org/careers

SANFORD
Luverne

GRANDSTAY HOTEL & SUITES

Come join our team

GrandStay® Hotel & Suites of Luverne, MN is now accepting applications for the **General Manager** position. The General Manager is responsible for leading the development and growth of a market-leading limited service hotel brand, focused on consistent delivery of innovative, first-class service. Additional responsibilities include supervising the daily hotel operations, managing and coordinating all points of guest contact, and developing positive guest recognition in order to build loyalty, frequency and sales. In addition, he/she develops products and services to differentiate the hotel from the competition and achieve the organizations financial, operational, business, and human resource goals.

Please apply online at www.morrisseyhospitality.com/careers/

HILLS-BEAVER CREEK PUBLIC SCHOOLS

Hills-Beaver Creek School District
301 N. Summit Avenue - PO Box 547
Hills, Minnesota 56138
Website: www.hbcpartriots.com
Email: t.holthaus@isd571.net
Telephone: (507) 962-3240

VACANCY NOTICE

- Position: 1 fte Instrumental Music Instruction
- Qualifications: Current Minnesota K-12 Band Teacher license.
- Application Deadline: Position open until filled.
- Starting Date: 2016 School Year
- Apply To: Superintendent Todd Holthaus, Hills-Beaver Creek Jr./Sr. High School, PO Box 547, 301 N Summit Ave, Hills, MN 56138. t.holthaus@isd571.net Please send letter of application, copy of teaching license, college transcripts and three current letters of reference
- Comments: Successful candidate will have a passion for instruction of group and individual band students in grades 5-12 in a highly successful band program. Currently the school district does not have marching band. Has had numerous students chosen as Jr. High Honor Band in State of MN and two years ago produced a MN all state trumpet player. Opening due to retirement.

- An Equal Opportunity Employer -

February 9, 2016

CADNET NATIONAL ADVERTISING NETWORK

ADOPTION

CALL NOW! 1-866-312-6061

PREGNANT? - Adoption is a loving choice for Unplanned Pregnancy. Call Andrea 866-236-7638 (24/7) for adoption information/profile; view loving couples at www.ANAdoptions.com. Financial Assistance Available.

AUTOS WANTED

A-1 DONATE YOUR CAR FOR BREAST CANCER! Help United Breast Foundation education, prevention, & support programs. FAST FREE PICKUP - 24 HR RESPONSE - TAX DEDUCTION 855-403-0213

HEALTH & FITNESS

VIAGRA 100MG and CIALIS 20mg! 50 Pills \$99.00 FREE Shipping! 100% guaranteed.

WANTED TO BUY

Wants to purchase minerals and other oil and gas interests. Send details to P.O. Box 13557 Denver, Co. 80201

MISCELLANEOUS

Make a Connection. Real People, Flirty Chat. Meet singles right now! Call LiveLinks. Try it

FREE. Call NOW: 1-888-909-9905 18+.

AVIATION Grads work with JetBlue, Boeing, Delta and others- start here with hands on training for FAA certification. Financial aid if qualified. Call Aviation Institute of Maintenance 866-453-6204

!!OLD GUITARS WANTED!! Gibson, Martin, Fender, Gretsch. 1930-1980. Top Dollar paid!! Call Toll Free 1-866-433-8277

Lower Your TV, Internet & Phone Bill!!! Get Fast Internet from \$15/mo - qualifying service. Limited Time Offer. Plus, get a FREE \$300 Gift Card. Call 855-407-0796 Today!

ADVERTISE to 10 Million Homes across the USA! Place your ad in over 140 community newspapers, with circulation totaling over 10 million homes. Contact Independent Free Papers of America IFPA at danielleburnett-ifpa@live.com or visit our website cadnetads.com for more information.

Reader Advisory: The National Trade Association we belong to has purchased the above classifieds. Determining the value of their service or product is advised by this publication. In order to avoid misunderstandings, some advertisers do not offer employment but rather supply the readers with manuals, directories and other materials designed to help their clients establish mail order selling and other businesses at home. Under NO circumstance should you send any money in advance or give the client your checking, license ID, or credit card numbers. Also beware of ads that claim to guarantee loans regardless of credit and note that if a credit repair company does business only over the phone it is illegal to request any money before delivering its service. All funds are based in US dollars. Toll free numbers may or may not reach Canada.

Papik MOTORS
I-90 Luverne, MN
507-283-9171 or 800-634-7701

IMMEDIATE OPENINGS

FULL TIME QUICK LUBE TECHNICIAN

We offer competitive pay, paid vacation, 401k, health insurance and ongoing manufacturer training. We invite you to be a part of the Papik team!

Papik Motors is located just off Interstate 90 in Luverne, MN. We offer 8 lines of new vehicles - Chevrolet, Buick, Cadillac, GMC, Chrysler, Dodge, Jeep and Ram plus an extensive inventory of pre-owned vehicles. We service customers throughout Southwest Minnesota, Northwest Iowa and Eastern South Dakota. Our main focus is on customer service and "Making it Easy" for our customers. We've recently constructed a new GM showroom and our service traffic has increased. We invite you to consider being a part of our team of automotive professionals! We offer competitive pay, a great work environment, plus benefits. Contact Marv for more info. **800-634-7701 or service@papik.com**.

Midwest Free Community Papers
Midwest Classifieds

Call 507-825-3333 or 800-325-6440 to place your Minnesota Free Community Paper classified ad.

AUTOMOBILES/MOTORCYCLES WANTED

MOTORCYCLES: TOP CASH PAID! For Old Motorcycles! 1900-1980. DEAD OR ALIVE! 920-371-0494 (MCN)

WANT TO BUY

WANTED TO BUY: Basswood by truckload delivered to Dodgeville, WI. Bark intact, harvested in dormancy, delivered FRESH cut. Pre-arranged purchases only. Call Al Ladd at 608-935-2341 ext.333 (MCN)

FOR SALE

FRUIT TREES LOW AS \$18. Blueberry, Grape, Strawberry, Asparagus, Evergreen & Hardwood Plants. FREE catalog. WOODSTOCK NURSERY, N1831 Hwy 95, Nellsville, WI 54456. Toll Free 888-803-8733. wallace-woodstock.com (MCN)

TRAILER WORLD: Surgery Over-Back to Normal Hours! Trailer SALES, Trailer PARTS, Trailer REPAIRS. 515-972-4554. www.FortDodgeTrailerWorld.com (MCN)

EMPLOYMENT/HELP WANTED

CLASS A CDL Drivers Needed For OTR. Kansas Based Company. 2 years Experience Needed. Must Meet DOT Requirements. Call Stan 785-545-5966 (MCN)

CLASS A CDL Driver: Good home time. Stay in the Midwest. Great pay and benefits. Matching 401k. Bonuses and tax free money. Experience needed. Call Scott 507-437-9905. Apply on-line <http://www.mcfgtl.com> (MCN)

CDL Drivers needed to haul livestock, home on weekends. Great Benefit Package for Full-Time Drivers! www.lynnchive-stock.com or call Angie @ 563-776-3051 for more information. EOE (MCN)

HELP WANTED: OTR DRIVERS. Seeking Owner/Operators & Company Drivers. Valid Class A CDL. Home on weekends if desired. Pulling hopper bottoms. Minnesota and Iowa based company. Call 507-421-3680 (MCN)

MAKE \$1,000 WEEKLY! Paid in advance! Mailing Brochures at Home! Easy pleasant work. Begin Immediately! Age unimportant! www.MyHomeIncomeNow55.com (MCN)

MAKE \$1000 Weekly! Mailing Brochures From Home. Helping home workers since 2001. No Experience Required. Start Immediately! www.centralmailing.net (VOID IN SD, WI) (MCN)

MISCELLANEOUS

AT&T U-Verse for just \$59.99/mo! BUNDLE & SAVE with AT&T Internet+Phone+TV and get a FREE pre-paid Visa Card! (select plans). HURRY, CALL NOW! 855-841-2927 (MCN)

Lower Your TV, Internet & Phone Bill!!! Get Fast Internet from \$15/mo - qualifying service. Limited Time Offer. Plus, get a FREE \$300 Gift Card. Call 877-916-4108 Today!! (MCN)

Free Pills! Viagra! Call today to find out how to get your free Pills! Price too low to Mention! Call today 1-877-560-0997 (MCN)

DISH NETWORK - \$19 Special, includes FREE Premium Movie Channels (HBO, Showtime, Cinemax, and Starz) and Blockbuster at home for 3 months. Free installation and equipment. Call NOW! 1-866-820-4030 (MCN)

\$14.99 SATELLITE TV. Includes free installation. High speed internet for less than \$.50 a day. Low cost guarantee. Ask about our FREE IPAD with Dish Network. Call today 1-855-331-6646 (Not available in NE) (MCN)

Emergencies can strike at any time. Wise Food Storage makes it easy to prepare with tasty, easy-to-cook meals that have a 25-year shelf life. FREE SAMPLE. Call: 844-275-5400 (MCN)

Does your auto club offer no hassle service and rewards? Call Auto Club of America (ACA) & Get \$200 in ACA Rewards! (New members only) Roadside Assistance & Monthly Rewards. Call 1-800-778-9184 (MCN)

Life Alert. 24/7. One press of a button sends help FAST! Medical, Fire, Burglar. Even if you can't reach a phone! FREE Brochure. CALL 800-306-1404 (MCN)

ALL THINGS BASEMENT! Basement Systems Inc. Call us for all of your basement needs! Waterproofing, Finishing, Structural Repairs, Humidity and Mold Control. FREE ESTIMATES! Call 1-800-640-8195 (MCN)

A PLACE FOR MOM. The nation's largest senior living referral service. Contact our trusted, local experts today! Our service is FREE/ no obligation. CALL 1-800-442-5148 (MCN)

DISH NETWORK - Get MORE for LESS! Starting \$19.99/month (for 12 months). PLUS Bundle & SAVE (Fast Internet for \$15 more/month). CALL Now 1-800-390-3140 (MCN)

Switch to DIRECTV and get a FREE Whole-Home Genie HD/DVR upgrade. Starting at \$19.99/mo. FREE 3 months of HBO, SHOWTIME & STARZ. New Customers Only. Don't settle for cable. Call Now 1-800-203-4378 (MCN)

19.99/mo. for DIRECTV - HD Channels + Genie HD DVR + 3 months FREE HBO, SHOW, MAX & STARZ + FREE NFL Sunday Ticket! Call Now 1-888-552-7314 (MCN)

ADT Security protects your home & family from "what if" scenarios. Fire, flood, burglary or carbon monoxide, ADT provides 24/7 security. Don't wait! Call Now! 1-888-607-9294 (MCN)

GET HELP NOW! One Button Senior Medical Alert, Falls, Fires & Emergencies happen. 24/7 Protection. Only \$14.99/mo. Call NOW 1-888-840-7541 (MCN)

HEALTH & MEDICAL

CASH PAID for unexpired, sealed DIABETIC TEST STRIPS! 1 DAY PAYMENT & PREPAID shipping. HIGHEST PRICES! Call 1-888-389-0695. www.cash4diabeticssupplies.com (MCN)

VIAGRA 100mg, CIALIS 20mg. 50 tabs \$90 includes FREE SHIPPING. 1-888-836-0780 or Metromeds.online (MCN)

Viagra!! 52 Pills for Only \$99.00! Your #1 trusted provider for 10 years. Insured and Guaranteed Delivery. Call today 1-888-403-7751 (MCN)

star-herald.com

• NEWS • SPORTS • VIDEOS • CLASSIFIEDS •
• COLUMNS • PUBLIC NOTICES •

the classifieds

To place a classified ad in the Luverne Announcer, call 283-2333, stop by our office at 117 W. Main, Luverne, or visit www.star-herald.com.

WANTED

Buying old cars, trucks, scrap iron, old farm equipment, tin, wire. Ericksen Salvage, Charlie Ericksen, 605-254-4654. (tc)

WINDOWS

We custom build and install Energy Star Therm-O-Loc Windows. Call Mike at Adrian Glass for a free in-home demonstration and estimate. 101 E. Pearl, Adrian, MN 56110. 507-483-2228 or 605-770-7677 or email mbyler@santel.net. (tc)

COMMERCIAL

Office Space for Rent: Ideal downtown location. Quality building. Several sizes available. Utilities included. Call Randy Creeger, 507-220-1105 or randy.creeger@gmail.com. (tc)

MISCELLANEOUS

HAVE A UNIQUE SERVICE OR BUSINESS? Get the word out to over 1.4 million households. Call WIDE AREA CLASSIFIEDS today, 507-359-7326. (tc)

RENTALS

For Rent: Upstairs, one-bedroom partial furnished apartment with car port. 507-283-9720 (tc)

Two-bedroom house in Luverne. \$650 a month plus utilities. Appliances included. Call Rick 507-227-5103. (1.28-2.14)

For Rent: One large bedroom apartment with garage. Stove and fridge furnished. Call 507-283-4095 or 507-290-1948. (tc)

One-bedroom apartment, upstairs, downtown. No pets, no smoking. Stove, fridge and utilities included. 507-227-1589. (tc)

CARDS OF THANKS

A big thank you to the Council for the Arts and Humanities, The Carnegie Cultural Center, and Jerry Dueschle for allowing us to have our "last" show. The Carnegie is always the best for the show because of the ease of displaying and lighting. Visitors came from a wide area and numbered over 200. Thanks again, Jerry.
Blue Mound Quilters Club
(2.11-2.28)

I would like to thank every one who prayed for and cared for me and my family while I was hospitalized and recovering at home. I would like to give a special thanks to our local doctors, nurses, and aides at Sanford, Luverne. Thanks again, God is good!
Ken Hup
(2.7-2.25)

The Family of Melvin Paulsen wished to thank everyone for your kind concerns. Your prayers, cards, notes, visits, food, and memorials were much appreciated. Thanks to the doctors, especially Dr. Judy, to all the staff at the homes, and the hospital staff. To Lorraine for the music, Reuben for his words at the funeral, all those who served lunch, and to Jeff Hartquist who helped us so much. God bless our caring community.
Jo Ann Paulsen
Floyd, Marianne and family
Mark, Lisa and family
Glen, Marla and Family
(2.14-2.28)

A sincere thank you to all for your prayers, food, flowers, gifts and expressions of sympathy during the loss of our dear Shelli Larson. May God bless you all.
Larry and Phyllis Swenson
Family
Aaron Larsen Family
(2.4-2.21)

SERVICES

Hamann Repair
Repairing all makes of tractors, skid loaders, combines and small engines.
For all your parts needs call 507-283-0041
Over 30 years experience
The Return Market Leader
David Hamann, Luverne
Open Mon.-Fri. 8 a.m. to 5 p.m.
Phone 507-283-0041

Interested in Advertising?
Call Rick or Chantel to advertise in the Announcer
283-2333

SERVICES

ELECTROLUX
Central Vacuums • Upright Vacuums
Canister Vacuums
Sales - Service - Supplies
ELAINE BOLT
507-442-7721 Edgerton, MN

Tree Tech Inc.
Luverne, MN
507-283-8552
507-920-6424 cell
tree removal
tree trimming
stump grinding
tree moving

2016'S MULES ARE HERE
2016 ATVS ARE HERE
Luverne Kawasaki
Let the Good Times Roll™
101 W. Maple, Luverne, MN 56156
507-283-1800

News for all ages.
www.star-herald.com

Attention Cardinal Fans!

Support the Girl's Hockey Team by running an ad in the commemorative hockey tab! Open to ALL fans - parents, grandparents, businesses or anyone else that would like to show their support. Please call the Star Herald office 507-283-2333 by noon on Friday, February 19 for ad options and prices.



AIRLINE CAREERS

Get FAA approved maintenance training at campuses coast to coast. Job placement assistance. Financial Aid for qualifying students. Military friendly.
Call Aviation Institute of Maintenance
800-481-7894

CASHFORCARS.COM

Looking to sell your vehicle fast?

Get a competitive offer and free towing nationwide.

888-524-9668



FOR RENT

Maintenance FREE living for those 50+ or disabled at Centennial Apartments. 1 Bedroom. Income based rent, includes ALL utilities! Community room, elevator and great outdoor spaces
LloydManagementInc.com
CENTENNIAL APARTMENTS
Jane: 507-283-2652
EQUAL HOUSING OPPORTUNITY

Interested in Advertising?

Call Rick or Chantel to advertise in the Announcer

283-2333

RENTALS

Damax Apartments

Rental Assistance Available

602 E. Warren St, Luverne, MN

Inquire about move-in specials

Accepting all income levels

1 & 2 Bedrooms
Newly Remodeled

Van Binsbergen & Associates, Inc.
320-269-6640 ext. #22
www.vanblc.com



BLUE MOUND TOWER



Luverne HRA • Blue Mound Tower

216 McKenzie Street

Luverne, MN 56156 EHO

507-283-4922

•Handicap Accessible

- All Ages Welcome
- Close to Senior Dining
- Close to Minnesota West College
- Income Based

- Pet Friendly
- Smoke Free
- Secure Entry System
- On Site Laundry
- Utilities included

CONTACT US @ 1-800-658-2327

FEBRUARY IS TRUCK MONTH



'16 CHEVROLET COLORADO LT

76031, 4x4, Crew Cab, V6, LT, Convenience package \$34,695
\$1,000 Select Unit Rebate
SALE PRICE! \$33,695

'16 CHEVY EQUINOX LT

76009, AWD, Driver Convenience Package, Driver Confidence Package, Power Rear Lift-gate, \$31,290 MSRP
SALE PRICE! \$27,495*

'16 CHEVY SILVERADO 1500 Z71

LT CREW CABS AT SUPPLIER PRICE!
76021, LT Crew cab, 4x4, 5.3 V8, All Star Package, rear camera & more!
\$46,860 MSRP
SALE PRICE! \$39,995*

'16 CHEVY TRAX LT

76034, AWD, white Pearl, LT, Convenience Package, rear Park-Assist, WiFi Hot spot! \$26,180 MSRP
SALE PRICE! \$23,995*

'16 GMC SIERRA SLT 1500

SLT CREW CABS AT SUPPLIER PRICE!
96035, Crew Cab, 4x4, SLT, Premium Plus, NAV, Driver Alert, GM Boards, Heated & Cooled leather seats, Z71 package, loaded! \$54,095 MSRP
\$47,985*

'16 GMC YUKON DENALI

JUST IN!!
96042, 4X4, 6.2L V8, Onyx Black, Open Road Package, Sunroof, DVD, Heads up display, 22 inch wheels, loaded
SALE PRICE! \$75,110

'16 GMC TERRAIN AWD SLE

96040, Crimson Red, WiFi Hot Spot \$30,305 MSRP
SALE PRICE! \$28,369*

'16 CHEVY SILDERADO 1500 LTZ

76038, Crew Cab, NAV, 20 inch Chrome Wheels, Heated & Cooled Leather Seats, loaded!
\$51,745 MSRP
SALE PRICE! \$44,995*

'15 BUICK LACROSSE

4029, Leather group, Only 15,000 miles
\$23,995

'15 BUICK VERANO

26005A, Convenience package, crystal red, only 2,000, one owner miles
\$19,978

'11 CHEVY CRUZE 2LT

3054A, 20,000 miles, leather, one owner
\$13,325

'15 CHRYSLER TOWN & COUNTRY

4048, Touring, Leather, low miles, power sliding doors, DVD player!
\$24,978

'15 GMC SIERRA 2500 DENALI

96017A, Crew Cab, Dura Diesel, only 9,000 miles, loaded!
\$56,978

'14 CHEVROLET SILVERADO LT

76002A, Double cab, V6, 4X4, great condition!
\$25,978

'10 GMC SIERRA 1500 SLE

95114A, Extended cab, 5.3 V8, 4X4, Red, excellent condition!
\$21,995

'04 GMC SIERRA 1500

95039B, Extended cab, 5.3 V8, great condition!
\$11,978

SEE COMPLETE INVENTORY & Apply Online for Pre-Approved Financing @ amdahlmotors.com



WWW.AMDAHLMOTORS.COM

CONTACT US @ 1-800-658-2327

HOURS: Monday through Friday: 9am to 5:00pm, Saturday 9am to 4pm, Sun. 10am to 2:00pm



Let us help send your thank-you's!

Call **283-2333**

Interested in Advertising? Call Rick or Chantel at 283-2333

WWW.AMDAHLMOTORS.COM



Dave Hup
Realtor/Owner
507-920-5910
dave.landandhome@gmail.com

Billy Cowell
Realtor/Owner
605-254-5450
billy.landandhome@gmail.com

remax.com

RE/MAX Land and Home
507-449-6111

117 East Main Street • Luverne, MN
Each Office Independently Owned and Operated

REQUEST FOR BIDS

Class 5 crushed gravel to be spread on Martin Township roads.

Township residents are able to buy gravel at the same price with limitations.

Submit bids on or before **March 4th** to **Gawaine Diekevers**
857 41st Street
Steen, MN 56173

Job must be completed by July 1st. Martin Township has the right to reject any or all bids.



Farm/Fleet Filter Sale

NAPA Filters' 50th Anniversary Sale


Up to **40% off**

February 15-29, 2016

106 South Estey Street, Luverne, MN | 507-283-4483



JAYCOX TRUCK & TRAILER SERVICE



LUVERNE, MN 507-449-6130

Semi-Truck and Trailer Service

\$349.95


Semi-Truck Service Special

\$295.95

INSPECTIONS INCLUDE:


- Change oil and filter (Synthetic oil not included)
- Change fuel filters
- 37 point inspection – Including Brakes, Tire conditions and pressures, Lights, Air system, Mirrors and supports, Exhaust system, Battery terminal conditions, Drive shaft, Oil seals, ect...

To avoid work completion delays, this is by appointment only. Mention this special when scheduling service. Present coupon at time of service.



Farmers Mutual Hail
Insurance Company of Iowa

PRECISION CROP INSURANCE SOLUTIONS™




Save time by reporting planting and harvest data faster and without leaving your home office.

Accuracy with data means you can pay less insurance premiums and have your claims paid faster.

It's one set of paperwork and one single location for all of your crop insurance information.

Contact Shirley about all your crop insurance needs today!



SHIRLEY TOP
Kozlowski Insurance
507-283-3704
212 S. Kniss
Luverne, MN

Products underwritten by Farmers Mutual Hail Insurance Company of Iowa and its affiliates, West Des Moines, Iowa. Not all affiliates are mutual companies. Policies may be issued by FMH Ag Risk Insurance Company or an FMH affiliate in some states. Farmers Mutual Hail and its affiliates are equal opportunity providers and prohibit discrimination in all programs and activities. Coverage not available in all states. ©2016 Farmers Mutual Hail Insurance Company of Iowa. All rights reserved.

Be Prepared for 2016

at the

Free 2016 Ag Seminar

Sponsored by
Exchange State Bank & Professional Ag Marketing

Wednesday, February 17, 2016
at 11:30 am

Learn insights on managing ever-tightening margins in today's markets. Let our experts share tips that will help your operation remain steady and strong in 2016. Please bring along a friend to this free and informative event!

Registration & Lunch 11:30 am - 12:10 pm
Presentations 12:15 pm - 1:30 pm

Blue Mound Banquet & Meeting Center
401 W Hatting St, Luverne, MN 56156

Space is limited and registration required!

Please RSVP to 507-449-6000 or
ESBLuverne@exchangestatebankmn.com




The Daily News of Rock County
star-herald.com

DEBOER EDGERTON

TRUCK MONTH





WAS: \$45,425
\$44,950

2012 CHEVROLET SILVERADO 3500HD
LTZ, DURAMAX DIESEL, 49K #1644A



MSRP: \$51,305
\$47,155

2016 CHEVROLET SILVERADO 1500
LTZ, BOSE, HTD LTR #1634



MSRP: \$38,970
\$36,295

2016 CHEVROLET TRAVERSE
LT, AWD, HTD SEATS #1608



MSRP: \$57,975
\$50,837

2016 CHEVROLET SILVERADO 2500HD
LT, DURAMAX DIESEL #1627



MSRP: \$62,705
\$59,505

2016 CHEVROLET SILVERADO 2500HD
LTZ, BOSE, DURAMAX TURBO DIESEL #1626



MSRP: \$47,800
\$43,650

2016 CHEVROLET SILVERADO 1500
LT, Z71, HTD SEATS #1632



WAS: \$39,050
\$36,450

2014 CHEVROLET SILVERADO 1500
LTZ, LTR, CHROME, 44K #1615A



\$26,980

2012 CHEVROLET SILVERADO 1500
LT, Z71, ALL STAR EDTN, 81K #15181A



WAS: \$28,550
\$26,987

2012 CHEVROLET SILVERADO 1500
LT, Z71, ALL STAR PKG, 59K #15249A



\$27,500

2011 CHEVROLET AVALANCHE
Z71, BOSE, HTD LTR, 75K #P1527



WAS: \$26,750
\$25,950

2013 CHEVROLET SILVERADO 3500HD
4WD, VORTEC 6.0L V8, 18K #1620A



Certified USED VEHICLES

CHEVROLET



SILVERADO

Auto Check

vehicle history reports

www.deboerchev.com

507-442-4341

ADVERTISE IN THE ANNOUNCER!
CALL RICK OR CHANTEL 283-2333