

A Luverne ANNOUNCER

117 West Main St. • Luverne, MN 56156-0837 • Phone 507-283-2333 • Address Service Requested

PRSR STD
U.S. POSTAGE
PAID
Permit No. 22
Page 1 Printers
Postal Customer

VOLUME 87 NUMBER 7

ROCK COUNTY'S FREE CIRCULATION PUBLICATION SINCE 1931

February 12, 2017

Community Update

Meetings

Battle Plain Township Board will meet at 7 p.m. Monday, Feb. 13, at the home of Arlyn Rylaarsdam.

Matthew 6 Board of Directors will meet at 7 p.m. Monday, Feb. 13, at the Pizza Ranch.

Blue Mound Woodcarvers will meet at 7 p.m. Monday, Feb. 13, in the Luverne Senior Center. Anyone interested in joining is welcome to come.

Rock County VFW Post 2757 will meet at 7 p.m. Tuesday, Feb. 14, at the Military Museum. Call 449-0632 with questions.

MS Support Group will meet at 7:30 p.m. Thursday, Feb. 16, at Southwest Health and Human Services in Luverne. All persons with MS, family and friends are invited. Call 283-2069.

Parkinson's Support Group will meet at 1 p.m. Thursday, Feb. 16, in St. John Lutheran Church, Luverne. Call 507-530-3307.

Lady Luverne Red Hats will meet at 12:30 p.m. Thursday, Feb. 16, at the Howling Dog for lunch and then to the Mary Jane Brown Home. Call for reservations at 283-8019 by Tuesday, Feb. 14.

Helping Build Communities Stronger will meet at 7:30 p.m. Tuesday, Feb. 21, in the Hills American Legion to discuss the June 9-11 Friendship Days.

Meditation and Mindfulness Practice, a new meditation group, will meet at 7-7:45 p.m. every 2nd and 4th Wednesday in the lower level of Hilger Commons at 215 N. Cedar Street in Luverne. For more information call Kim at 507-353-0041 or email kimberlyelizabeth@live.com.

Narcotics Anonymous will meet every Thursday evening at 6:30 p.m. at the Steen Reformed Church. Contact Robert for more information 507-329-2642.

Women's Alcoholics Anonymous meets at 8 p.m. Mondays in the United Methodist Church.

Al-Anon meets from 6:30 to 7:30 p.m. Wednesdays in Sanford Luverne. Call Stephanie at 507-449-1246.

Narcotics Anonymous meets at 7 p.m. Fridays and for basic text study at 7:30 p.m. Tuesdays in the basement of St. Catherine Catholic Rectory, 203 E. Brown St., Luverne. Use east door. For more information call 507-220-0137.

Alcoholics Anonymous meets at 8 p.m. Wednesdays and Saturdays in United Methodist Church, Luverne. 605-321-4324.

Alcoholics Anonymous and Al-Anon meet from 8 to 9 p.m. every Tuesday in Runals Memorial Hall, Edgerton. Call Naomi, 507-215-2956, with questions.

Hospice Charity Dinner & Auction

The annual Hospice Charity Dinner and Auction is planned for April 22 at Grand Prairie Events in Luverne. Tickets will go on sale Monday, Feb. 13, at the hospice office at 211 E. Main Street in Luverne and can also be purchased with VISA or Master Card by calling 507-283-1805.

Story Hour and Laptime at library

Story Hour for ages 4-5 meets from 10 to 11 a.m. every Thursday from Feb. 9 through April 13. It includes stories, songs, crafts and more. Register by calling the Library at 449-5040.

Laptime for ages birth-through 3 with an adult meets from 10:30 to 11 a.m. every Friday from Feb. 10 through April 14. It includes stories, songs, crafts and more. No registration is needed for this free activity.

Monthly Food Ministry Feb. 16

The Monthly Food Ministry, sponsored by New Life Celebration Church, will be from 5-6 p.m. Thursday, Feb. 16, at the Luverne Senior Center. If you're having trouble putting food on the table, come for fresh produce, bread and meat. Children will be asked to wait outside. Call Gloria at 283-4366.

'Sister Act' Feb. 24-26 in Rock Rapids

The River Valley Players will perform "Sister Act," the musical, at 7:30 p.m. Friday and Saturday, Feb. 24 and 25, and 2 p.m. Sunday, Feb. 26, at the Forster Auditorium located in Central Lyon High School, Rock Rapids. Contact Angie at 712-472-3456.

Family fun reading night Feb. 27

A free family fun reading night will be from 6 to 7:30 p.m. Monday, Feb. 27, in the Luverne Elementary School commons. Prizes and snacks will be offered.

Little Lambs 2016-2017 registration

Little Lambs Preschool is now accepting registrations for the 2016-2017 school year. Registration materials may be picked up at the preschool or at St. John Lutheran Church office, both at 803 N. Cedar Street in Luverne or online at www.stjohnlutheranluverne.org at Little Lambs link. Call 283-2316 with questions.

Rock County STAR HERALD

Coming this week in the
Rock County Star Herald



John Rittenhouse photo/0216 lgh 6

Opening victory

Madison Crabtree and the Luverne girls' hockey team opened the Section 3A Tournament at the Blue Mound Ice Arena Tuesday. With Crabtree turning in a two-assist effort, Luverne posted a 2-0 win to advance to Friday's semifinals in Marshall. Read about Tuesday's conquest and Friday's game against the Tigers in Thursday's Star Herald.

Maximize the price per bushel for production losses on your corn and soybeans



Cover marketing decisions and input costs this season. Ask an RCIS agent about a supplemental Added Price Option (APO) policy.



Steve Cattnach
steve@cattnach.com
AGENT



Barb Anderson
barb@cattnach.com
AGENT



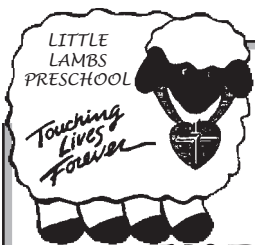
Josh Teune
josh@cattnach.com
AGENT



South Hwy. 75, Luverne, MN | 507-283-8383 or 1-800-258-4471

E-mail: info@cattnach.com

Some products not available in all states or counties. This is a general description of selected coverage provisions. The insurance policy should be consulted for detailed coverage provisions, restrictions and exclusions. Rural Community Insurance Agency, Inc., is a managing general agency representing two risk-bearing insurance companies. Coverage is underwritten in all states by Rural Community Insurance Company, Anoka, MN except in Montana where hail coverage is underwritten by Tri-County Farmers Mutual Insurance Company, Malta, MT. Coverage type may vary by state. Rural Community Insurance Agency, Inc., D/B/A RCIS. RCIS is an equal opportunity provider. © 2015 Rural Community Insurance Agency, Inc. All rights reserved. 2015RC-094, Nov. 2015



Little Lambs Preschool
at St. John Lutheran Church
803 N Cedar St, Luverne, MN

ENROLL NOW
for the 2017-2018 SCHOOL YEAR!

Class Openings available

- 3-day Pre-K class - Monday, Wednesday, Friday 8:30-11 am
- NEW • 3/5 day Pre-K class - 12:30-3pm Sept.-Dec. (Mon., Wed., Fri.) Jan.-May (Mon. through Fri.)
- NEW • 3-4 year olds class - Tuesday, Thursday 8:30-11 am

Little Lambs Preschool admits students of any race, color and national or ethnic origin. We offer quality care and developmental learning experiences in a Christian environment.

For more information or to register call:

St. John Lutheran • 283-2316
littlelambs@iw.net

NOTICE TO THE POLICYHOLDERS OF BEAVER CREEK MUTUAL INSURANCE COMPANY

Any policyholder wishing to be a candidate for the Office of Director must file such notice in writing with the Secretary, at the Home Office of the Company in Luverne, MN, at least thirty days prior to the April 4, 2017 Annual meeting of the Company, as provided by the Article of Incorporation. Last day for filing will be March 6, 2017.

BY ORDER OF THE DIRECTORS

Bernard Ulk, President
Mike Engesser, Secretary

Happy 60th Anniversary
Jim & Lorena Hoiland
Friday, February 17
Greetings may be sent to:
1110 N. Carol St.
Luverne, MN 56156

Duane J. Mulder Realty
DUANE MULDER AUCTION SERVICE
Office 507-283-4901

AUCTION SCHEDULE
Currently Taking Consignments For Our Next Indoor Auction At The Duane Mulder Auction Center, Downtown Beaver Creek, MN. **Yes, we sell cars, pickups, trailers, campers & boats on these auctions.** Call 507-283-4901 Or 507-220-3558 To Get Your Items Consigned To This Auction.

DUANE MULDER – Auctioneer – Real Estate Broker – Certified Agricultural Appraiser. Office Phone 507-283-4901 - Cell Phone 507-220-3558.

Jensen Management Service, Inc.

111 N. Cedar, PO Box 836, Luverne • 507-283-2391
William (Bill) V. Weber, broker • 507-220-4803
William (Bill) J. Korth • 507-227-4958
Tamra (Tammy) Jo Makram • 507-227-7010

CHECK OUR WEBSITE AT:
WWW.JMSI.NET
TO SEE OUR LISTINGS



1551 Co Hwy 4, Luverne

1.33 acreage - excellent opportunity to enjoy country living!

NEW LISTING

Cragoe Realty
Selling Real Estate in the Heart of the Prairieland.

Your hometown real estate broker for over 22 years
Scott Adams, broker 507-227-0840
Gene Cragoe, broker lic. in MN & SD info@cragoe.com
507-283-2647 or 800-689-2647

We have buyers! WE NEED YOUR LISTING!
LUVERNE'S LOCALLY-OWNED AND OPERATED MLS AGENCY
FOR COMPLETE LISTINGS LOG ONTO WWW.CRAGOE.COM

The first step to successfully selling your home is *listing it with us!*

116 W MEADE COURT, LUVERNE | \$59,000

Very nice home with large kitchen. Kitchen/dining area has entrance to back yard where there is a rock garden and fire pit. Great family room in lower level. New doors. Storage shed. Ceiling fans stay. Fenced in back yard. Double detached garage with opener. Laundry off 4th bedroom.

RED ROCK TOWNSHIP NOTICE OF ANNUAL MEETING

The citizens of the Township of Red Rock, in the County Minnehaha, South Dakota, and who are qualified to vote at general elections, are hereby notified that the Annual Township Meeting for said Township will be held at the Brandon Pizza Ranch on Tuesday, March 7, 2017, at 7:00 pm, of the said day, for the following purposes: To elect one Township Supervisor; One Township Clerk; One Township Treasurer; and do any other business proper to be done at said meeting when convened. In case of postponement due to bad weather, the meeting will be rescheduled for the following Tuesday which is March 14, 2017.

Given under my hand this 6th day of February, 2017.

James Anderson
Township Clerk

The **Buestem**
CASUAL • FRESH • LOCAL

Valentine's Day Specials

February 10, 11 & 13, 14

Happy Valentine's Day

Dinner for two \$50 Dinner includes two glasses of house wine, two strawberry spinach salads, a red rose and your choice of two entrees!

HERB ROASTED CHICKEN served with cream cheese & herb mashed potatoes and grilled asparagus

10 OZ RIBEYE served with cream cheese & herb mashed potatoes and grilled asparagus

finished with **Red Velvet Cake** to share!

Farmers Mutual Hail
Insurance Company of Iowa

MAXIMIZE YOUR COVERAGE

[RAMP®]
REVENUE ACCELERATOR MAX PROTECTION

Get more out of your crop insurance coverage by adding RAMP® to protect up to 95% of APH revenue.

Learn more at www.fmh.com/ramp or contact your Farmers Mutual Hail agent today!

Kozlowski
Insurance Agency & Financial Services, Inc.
212 S. Kniss, Luverne, MN • 507-283-3704
Pipestone, MN • 888-825-3366
www.kozlowski-insurance.com

Shirley Top

RE/MAX

Dave Hup
Realtor/Owner
507-920-5910
dave.landandhome@gmail.com

Billy Cowell
Realtor/Owner
605-254-5450
billy.landandhome@gmail.com

For all our listings visit LuverneLandandHome.com

RE/MAX Land and Home
507-449-6111
117 East Main Street • Luverne, MN
Each Office Independently Owned and Operated

We can help you find the house you'll love!
Happy Valentine's Day

Your source for daily news
Star-Herald.com

Interested in Advertising?
Call **Rick** or **Chantel**
to advertise in next week's Announcer
283-2333

Real Estate Retrievers
LIVERNE, MN • 507-283-4216
HILLS, MN • 507-962-3433

ALL STATE TEAM
Keith Elbers, Realtor/Auctioneer 507-920-6131
Deb Aanenson, Realtor/Office Manager/Broker Assistant 507-920-9921
Gene Aanenson, Realtor 507-920-9920
Jen Rolfs, Realtor 507-227-2985

REALSTATEREtrievers.COM • REALTOR.COM • HOMEVIEWSIouxFALLS.COM

ANY TIME OF THE YEAR... WE'RE HERE TO LISTEN

No matter the season, we're here to assist with your homebuying and selling needs. We're here to listen and to help with your real estate questions. Contact us today!

FEATURED LISTING

606 NE Park \$94,500

This cape cod style home is a charming addition to the neighborhood. The home features 2 bedrooms on the main level, a new basement bedroom with legal egress window, quaint front entry with closet space, arched entrances into common areas, a large living room with gorgeous oak hardwood floors leading in to the dining area and kitchen. The kitchen has custom built walnut cabinetry with an arched pass thru to the dining area with bar stools for that quick meal on the go. The property has a great location 1 block from the school complex. New roof completed fall of 2016. Seller is offering a \$750 carpet allowance for new basement bedroom and bonus room. Call your favorite agent today to take a look at this property you could be calling your new home!

\$750 CARPET ALLOWANCE!

Elbers Auction Service
"Quality Auctions Since 1988"

Keith Elbers, AUCTIONEER/REAL ESTATE SALES
Lic #67-62
www.ElbersAuction.com

Connell Car Care
www.connellcar.com
310 N Kniss, Luverne, MN
www.connellcar.com
507-283-2341 • 800-884-2341

SALESMAN, THOMAS STERRETT 920-8859
CONNELL'S GREAT DEALS OF THE WEEK

 2011 CHEVROLET AVALANCHE THIS A NICE ONE, HARD TO FIND BRIGHT RED, WITH ALL THE TOYS, HTD SEATS, BACK UP CAMERA, MOONROOF, 20" WHEELS, EXCELLENT CONDITION, 75K \$27,900	 2011 RAM 1500 NICE USED RAM, ALL THE BELLS AND WHISTLES RAM TRUCK BOXES, HTD SEATS AND STEERING WHEEL, BOX COVER, GREEN, 127K \$21,450	 2013 BUICK ENCLAVE THIS VEHICLE IS LIKE NEW AND HAS NEW TIRES ON IT. DON'T LET THIS ONE GET AWAY, MAROON, 61K \$29,500
 2013 FORD F-150 NICE CLEAN TRUCK, PWR SEAT, BRAND NEW TIRES, 6.5' BOX. XLT WITH FRT BUCKETS, BED LINER AND BOX COVER. 3.5 ECO BOOST, SILVER, 84K \$24,995	 2014 FORD F-150 LOADED, EVERY OPTION, HTD AND COOLED SEATS, BOX COVER, PWR BOARDS. DON'T MISS THIS TRUCK. BLUE, 35K \$36,750	 2015 DODGE GRAND CARAVAN 1 OWNER, VERY CLEAN, QUAD BUCKETS, CLOTH INT, STOW AND GO SEATS, PWR DOORS AND LIFT GATE. STX PLUS PKG, RED, 41K \$20,900
 2015 CHEVROLET IMPALA NICE IMPALA, CLOTH-LEATHER SEATING, VERY CLEAN, 3.6 V6. EXCELLENT GAS MILEAGE, WHITE, 44K \$17,750	 2015 CHRYSLER TOWN & COUNTRY QUAD BUCKET SEATS, LEATHER, DVD, PWR LIFT GATE, PWR SIDE DOORS. VERY NICE USED VAN, GRAY, 44K \$20,750	 2014 SUBARU OUTBACK THIS IS A VERY VERY CLEAN OUTBACK, AWD, BRAND NEW TIRES, CLOTH INT., BLUE, 83K \$17,900

SAVE BIG on select new & used inventory!

ONE DAY ONLY
SWEET

Indoor
sale



8am-4pm



JUST FOR YOU



Shop in the comfort of our heated shop

507-283-9171, 800-634-7701, papik.com

FEBRUARY IS HEART MONTH



Adam Stys, MD

KNOW YOUR NUMBERS LUNCH AND LEARN

Get expert advice on living a heart-healthy lifestyle. Join Adam Stys, MD, for an interactive discussion and enjoy a heart-healthy lunch during the presentation.

Date: Feb. 28, 2017 • Time: Noon

Location: Sanford Luverne Medical Center

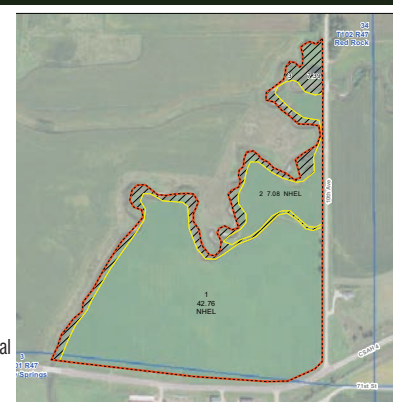
Cost: Free • Limited seats available.

Call 507-449-1272 to RSVP by Feb. 20.



"Complete Auction Service ... with the Seller in mind"
VanDerBrink Auctions LLC
• Excellent Marketing-Advertising
• Online and ON Site Auctions
• Personal - Professional Service
• Call Today!
507-673-2517
or 605-201-7005
Hardwick, MN 56134
www.vanderbrinkauctions.com

LAND AUCTION
+/- 55 ACRES MINNEHAHA FARM GROUND-
NEAR VALLEY SPRINGS, SD 57068
FRIDAY, FEBRUARY 24TH, 2017 AT 11:00AM
TO BE HELD ONSITE
LAND LOCATED AT CORNER OF 488TH AVE. & 262ND ST.
(HIGHWAY 264)
NE EDGE OF VALLEY SPRINGS, SD- N. SIDE OF ROAD-
MINNESOTA/SOUTH DAKOTA BORDER
WATCH FOR SIGNS.



VanDerBrink Auctions is pleased to offer this +/- 55 Acres of Farm Ground located a short drive from Sioux Falls, SD and on the NE edge of Valley Springs, SD and zoned AG. The Land is zoned Ag and has 2 housing rights. Build your house, room to play, farm or rezoning to allow commercial lots. A great chance to buy land near Valley Springs, SD. Plan now to attend this auction. The farm is a variety of Silty Loams. Land is considered Highly Non-Erodible with areas of high productivity. According to the Minnehaha/Rock County FSA Office, there was +/- 57.23 acres of farm ground, of which 10 acres will be surveyed and kept for commercial lot by the Sellers. According to 2016 FSA Data, there is 49.84 acres of farm ground with 33.8 base acres of corn with PLC Yield of 155 bushels/acre and 14.9 acre base for soybeans with a PLC yield of 43 bushels/acre. There are no current farming leases and the buyer will be the Landlord/farmer.
LEGAL DESCRIPTION: +/- 55 Acres to be surveyed out of Tract 4 Olson's Addn, S 1/2 of S34, T102, R47 & N1/2 of S3, T101, R47, Minnehaha Cnty, S.D. The property will be sold with 2 housing rights according to Minnehaha Planning and Zoning. Being sold in 1 tract subject to surveyed acres.
TAXES: 2016 Taxes were \$1,175.00/year, but will be re-accessed by Minnehaha County after survey.
TERMS: 10% down, non-refundable, day of sale, both parties to sign an Executable purchase agreement immediately after sale. The property is being sold as a cash sale only. The property is being sold on surveyed acres and price bid X's surveyed acres. Survey paid by the seller and copy provided to Buyer at closing. There are no current leases for farming on the property. Possession at closing. Warranty Deed to be provided to buyer at closing. Taxes paid/prorated to date of closing by seller. Title insurance responsibility of each party. Closing transaction fee split 50-50 between buyer and seller. Property selling AS IS and subject to new survey. Buyers are encouraged to review Data and property. Maps, Pictures, and more on website. www.Vanderbrinkauctions.com. Property being sold onsite and subject to confirmation of motivated seller.

BJM ENTERPRISES- OWNER
VanDerBrink Auctions, LLC
Yvette VanDerBrink- Auctioneer-Broker SD 12105
Dale Pavlis-Auctioneer
For complete pictures and more info www.vanderbrinkauctions.com - Online/Phone Bidding Available.

Are you Thinking of Having an Auction?
We want to work for you!
*Excellent Marketing *Online & Onsite Auctions *National & Local Exposure *Low Commissions
Give us a Call Today! 605-201-7005 or 507-673-2517

PLAN TO ATTEND THESE AUCTIONS!
May 6th, 2017- Collector Cars, Memorabilia, Parts & More- Hustisford, WI
June 3rd, 2017- Collector Cars, Memorabilia, Parts & More- Happy Days Dream Cars Liquidation- Warrensburg, MO
June 10th, 2017- Collector Cars & Parts- Mary Underberg Estate- Sioux Falls, SD
July 15th & 16th, 2017- Approx. 700 Collector Cars, Motorcycles, and antique Tractors & More- The Ron Hackenberger Collection- Norwalk, OH
Aug. 4th & 5th, 2017- Real Estate, Collector Cars, Parts, & More- Brillion, Wisc.

SUBSCRIBE TO THE STAR HERALD ONLINE EDITION!

Only \$13 for current Star Herald Print Subscribers.
Call 283-2333 for more details.

Find it here!

Here's My Card

Your Quick & Easy Guide to Area Businesses

ROCK COUNTY CHIROPRACTIC
• Men, Women & Children's Health
• Custom Orthotics • Kinesiotape • Athletic Care • MassageTherapy • Work & Auto Injuries • Postural Restoration
DR. MICHAEL SMITH
www.ROCKCOUNTYCHIROPRACTIC.COM
283-2561 • 103 E. MAIN, LUVERNE
Monday 7:30 a.m. - 6 p.m. • Tuesday 7:30 a.m. - 3 p.m.
Wednesday 7:30 a.m. - 6 p.m. • Thursday 7:30 a.m. - 1 p.m.
Friday 7:30 a.m. - 5 p.m.
Most Insurance Accepted

Loosbrock Electrical Construction, LLC
Licensed • Bonded • Insured
Residential • Commercial • Industrial • Agriculture
Scott Loosbrock
Owner
507-360-5418 • scott@loosbrockelectric.com
www.loosbrockelectric.com

McClure
PLUMBING, HEATING, AIR CONDITIONING, INC.
412 S. Kniss - Luverne, MN • 507-449-2828
Jerry Buss Lic. #002732PM
Troy Buss Lic. #005573PM
RAIN BIRD. Carrier. LENNOX. BRADFORD WHITE.
SD # Luv-MN-R1117-98-1262C
Licensed, Bonded and Insured in Minnesota and South Dakota

CLEVERINGA CONSTRUCTION
507-920-5631
• For All Your Building Needs • Additions • New or Remodel
www.cleveringaconstruction.com
Merlin Cleveringa 879 - 100th Ave., Luverne, MN
507-283-2698 Home Lic. # BC-20552185

Stroeh's Auto Center
We provide complete auto care for any make or model vehicle, from oil changes to engine repairs
Alan Stroeh • 321 E Main St. • Luverne • 283-4226
www.stroehsauto.com

Preston Power
Preston Neese 507-227-9156
Owner PO Box 151
hijprestonpower@gmail.com Magnolia, MN 56158
small engine repair * snowblowers - all makes & models

ROCK MOTORSPORTS
MOTORSPORTS AND POWER EQUIPMENT
PARTS - SERVICE
507-449-4386
Bill Anenson - Owner
621 S Kniss Ave Luverne, MN 56156

Rock County EYE CLINIC
Dr. Sandra Carman
507-283-2345
102 N. Freeman Ave., Luverne, Minnesota

FRANKEN CONSTRUCTION
Travis Franken, Lic #20627458 & Insured
1332 181st St., Luverne
507-920-8253
Call today for a FREE ESTIMATE.
REMODELING • NEW ADDITIONS • SIDING
DECKING • WINDOW/DOOR REPLACEMENT
GARAGE DOORS • CONCRETE
NO JOB IS TOO SMALL!!!

Tree & Stump Removal
FREE ESTIMATES
Traci Davis 605-759-7880
Mike Davis 507-227-7068

New Construction - Home Additions - Interior & Exterior
Home Remodeling - Windows - Siding - Drywall -
Foundation Work & Walls - Sidewalks & Driveways
Oehlerts & Son Construction
30 Years Experience
Kevin Oehlerts, Luverne,
www.OehlertsAndSonConstruction.com
507-673-2206
Lic. # BC064924

LUVERNE HEALTH & WELLNESS
Codie Zeutenhorst, D.C., CAC
• Acupuncture • Chiropractic Care
• Family Care • Sports Injuries
• Kinesiotape • Auto & Work Injuries
Acupuncture and Massage Available
Kris Van Der Brink M.T. & Amy Rosales M.T.
507.449.4400 www.luvernechiro.com
109 S. Freeman Ave. | Luverne, MN

D. & G. Drinking Water Systems
 Water made by reverse osmosis process
 Rentals • Sales • Service
 610 West Hatting • Luverne, MN
 507-283-4630 • Darin Smeins
 Lic. # WM068242

Take time out of your day to have a quiet time with God
DIAL-A-DEVOTION
283-4005
 an outreach ministry of St. John Lutheran Church

New Prairie Insulation, Inc.
 Serving Residences & Contractors
FREE ESTIMATES
---Insulation---
 Arnold Brondsema
 Beaver Creek, MN
 507-673-2548 or
 1-800-232-7089

Get all your Car Licenses & Title Transfers at
DEPUTY REGISTRAR'S 141 INC.
 821 Main Street • Edgerton • 507-631-1028
 Business Hours:
 Monday through Friday, 8 a.m. - Noon, 1 p.m. to 5:15 p.m.
 Saturday 8 a.m. to noon and
 Wednesday evenings 6:15 p.m. to 8 p.m.
NOW OFFERING FAST TRACK

Loans, leases, and crop insurance

Pat Barnett
 866-601-0506
AgStar
 Financial Services, ACA
 AgStar.com
 AgStar Financial Services is an equal opportunity employer and provider.

Ketterling Services, Inc.
 401 S. Cedar St. • Luverne, MN • 507-283-2863 • www.ketterlingservicesinc.com
 Hours: Tues.-Fri. 8:30 a.m. to Noon & 1 p.m. to 5 p.m. Sat. 8:30 a.m. to Noon
Roll-Off Service for Building Demo & Remodeling
SANITATION: Commercial Residential Rural
RECYCLING: Collection Dropoff
 Monthly - Weekly - Daily

2017'S MULES ARE HERE
2017 ATVS & UTVS ARE HERE

Luverne Kawasaki
 Let the Good Times Roll™
 101 W. Maple, Luverne, MN 56156
 507-283-1800

RECYCLE NEWSPRINT!

LOCK IN A GREAT RATE!
 Let's talk refinancing!
Lois Leuthold | Mortgage Lender
 507-295-0539 | Luverne
First Farmers & Merchants
 We believe in you.
 Member FDIC. And the community.



Orv & Sons, Inc.
 Plumbing ~ Heating ~ Cooling
 507-967-2464
 Office hours: M-F 7:30-noon & 1-5 ~ Sat 7:30-9 a.m.
 *Licensed for pump installation, sewer installation & Backhoe services
 *Roto-rooter, Pipe Location & Camera Inspection System
 *Oxyblast-water treatment Product
 *Lennox Furnaces & Air Conditioners
****NOW ACCEPTING CREDIT CARDS****
 308 S. Broadway St. Ellsworth, MN

The news of Rock County. Updated Daily.
www.Star-Herald.com

ADS BULK SEED BUGGY
 Since 1999

MINERAL MATRON
 Cattlemen's Answer to Handle Mineral & Fly Control
Only \$1,995

 New ADS Pond-Tini

 New ADS Seed Tote
 Hard top and Roll Tops Available

 BST Models 100-200-300 units

 ST Models (Pro - Box) Standard 2 or 4 Box
 All Galvanized Construction
 Call Eric
605-261-1562
 dnefarms1@gmail.com
 MANUFACTURED BY
 AG DRYER SERVICES, INC., ELM CREEK, NE.

Due to remodeling the Luverne Highway 75 location will be closed on:
President's Day Monday, February 20
 For your convenience, our Luverne Downtown location will be open President's Day Monday, February 20.
 All locations will be open normal business hours on Tuesday, February 21.

MINNWEST BANK
 Member FDIC
 116 East Main Street • Luverne • 507-283-2366
 Hwy. 75 • 800 South Kniss • Luverne • 507-283-9131
 304 East 1st Ave. • Beaver Creek • 507-673-2334

CONTACT US @ 1-800-658-2327
Amdahl Motors
SELECT UNITS PRICED TO MOVE HURRY IN BEFORE THEY GO!
TRUCK MONTH
SAVE OVER \$9,000
2017 CHEVY SILVERADO 1500 4X4 LTZ
 #77032
 LTZ Trailer Tow, Back-up Camera, Heated Seats
 MSRP: \$48,720 - Discount + Incentives: \$9,398
SALE PRICED! \$39,322*
WWW.AMDAHLMOTORS.COM

<p>• '17 GMC SIERRA 4X4 CREW SLT •</p>  <p>#97032 Premium Plus Package, All Terrain Tires, 27" Off-Road Package, 20" Chrome Wheels, NAV. MSRP: \$55,195 - Discount: \$8,952 SALE PRICED! \$46,243*</p>	<p>• '17 GMC SIERRA 4X4 CREW CAB DENALI •</p>  <p>#97037 6.2V8 Ultimate Package, 22" Tires, Rear Seat Entertainment MSRP: \$66,015 - Discount: \$7,735 SALE PRICED! \$58,280*</p>
<p>• '16 CHEVY CRUZE ECO LTD •</p>  <p>#46001 Enhanced Safety Package, Drivers Confidence Package MSRP: \$23,965 - Discount: \$4,992 SALE PRICED! \$16,965*</p>	<p>• '17 CHEVY MALIBU LT •</p>  <p>#47013 Convenience & Technology Package, Leather Package, Drivers Confidence MSRP: \$29,485 - Discount: \$3,190 SALE PRICED! \$26,295*</p>
<p>• '17 CHEVY EQUINOX AWD LT •</p>  <p>#77054 Driver Confidence Package, Technology Package, Drivers Confidence Package, Power Rear Lift-Gate MSRP: \$29,990 - Discount: \$5,000 SALE PRICED! \$27,580*</p>	<p>• '17 GMC ACADIA LTD. AWD •</p>  <p>#97025 Dual Skyscape Roof MSRP: \$46,570 - Discount: \$2,000 SALE PRICED! \$46,570*</p>
<p>• '17 BUICK ENCLAVE AWD •</p>  <p>#27821 Premium Group, Dual Moon-Roof, 20" Wheels, Touring Edition MSRP: \$53,435 - Discount + Rebate: \$4,935 SALE PRICED! \$48,500*</p>	<p>• '17 GMC TERRAIN AWD •</p>  <p>#97044 MSRP: \$38,110 - Discount: \$4,752 SALE PRICED! \$25,358*</p>
<p>• '17 BUICK ENVISION AWD ESSENCE •</p>  <p>#27019 MSRP: \$42,465 - Discount: \$4,992 SALE PRICED! \$38,423*</p>	<p>• '17 CHEVY TRAX LS FWD. •</p>  <p>#77035 MSRP: \$21,895 - Discount: \$4,992 SALE PRICED! \$16,999*</p>
<p>• '17 BUICK ENVISION FWD •</p>  <p>#27016 MSRP: \$38,795 - Discount + Rebate: \$4,427 SALE PRICED! \$32,368*</p>	<p>• '17 BUICK ENCLAVE AWD LEATHER GROUP •</p>  <p>#27017 Sport Touring Edition, Color Touch Navigation Radio MSRP: \$50,130 - Discount + Rebate: \$6,378 SALE PRICED! \$43,752*</p>

SEE COMPLETE INVENTORY & Apply Online for Pre-Approved Financing @ amdahlmotors.com
Amdahl Motors
 CHEVROLET GMC BUICK
WWW.AMDAHLMOTORS.COM
CONTACT US @ 1-800-658-2327
HOURS: Monday through Friday: 9am to 5:30pm, Saturday: 9am to 5pm, Sunday: 10am to 4pm
 *INCLUDES DISCOUNT AND REBATES. SEE DEALER FOR DETAILS.

The Star Herald Nose

www.star-herald.com

Dining & Entertainment



Adult Prom *Can't wait to see you there!*

Sat., March 4
8pm-midnight
Forster Community Center

Come and dance the night away and relive the high school days! Formal attire, of any era or come as you are! Rock Rapids Fire Department will be selling beverages.

\$15 per person • \$25 per couple
Tickets at the door

Must be 21 or older, ID checked at the door

sponsored by Rock Rapids Kids Club

NORWEGIAN'S
FREE AT SEA
Up To \$2,000 In Value

CHOOSE UP TO 5 FREE OFFERS*

- UNLIMITED OPEN BAR
- SPECIALTY DINING
- SHORE EXCURSIONS
- WiFi
- FRIENDS & FAMILY SAIL FREE*

CALL NOW!
ALL ABOUT TRAVEL 605-339-8911
aat@allabouttravel.org
www.AllAboutTravel.org

Valentine Special *Tuesday, February 14 6-9 p.m.*

Buy one meal, get one half off
Comes with cheesecake

Howling Dog SALOON
507-449-0454

Saturday, February 18
DJ from 9 pm to 1 am

Sunday, February 19
Sunday Brunch 11 am to 3 pm
\$13.99 adults
\$8.99 kids 8 and under

Valentine's Day Relay for Life Fundraiser

Buy your sweetie some sweets at our Bake Sale!
Tues., Feb. 14th
9am till gone!

RELAY FOR LIFE
A TEAM EVENT TO FIGHT CANCER

First Farmers & Merchants
303 East Main Luverne, MN 56156
We believe in you. 507-283-4483
Member FDIC. Not their community. www.ftmbank.com

Beaver Creek Sportsman Club
WILD GAME FEED
27TH ANNUAL

SATURDAY, FEB 18
serving 2-6pm (raffle drawing at 6pm)

UP THE DAM CREEK

WIN! GIVING AWAY YOUR CHOICE OF FOUR GUNS
RAFFLE: Remington Shotgun or \$300
LOTS OF OTHER GREAT PRIZES!

Downtown Beaver Creek • 507-204-7740
3-? Mon-Thurs • 10am - 1am Fri & Sat

Sterling's Cafe & Grille

Join Us FOR A TASTY DINNER AND A HOMEMADE DESSERT!

CALL FOR RESERVATIONS!
507.449.0220

107 E. MAIN ST. LUVERNE, MN 56156

THE EAGLES CLUB
312 W. Harrison, Luverne • Phone 283-9661 • Lic #00258

Call the Club Manager at 283-9661 if you're interested in booking the Eagles Club for wedding receptions, class reunions, parties, etc.

THURSDAY NIGHTS
14 28 45 50 61
BINGO
6:30 pm 2 45 50 61
1 32 47 69
11 19 FREE 55 63
5 16 39 48 72

FRIDAY, FEBRUARY 17
Pork Chop Dinner
\$9 meal
(includes pork chop, baked potato, corn & bread)
6 pm 'til gone

Win a trip for two to Myrtle Beach, SC!
Must be present to win. Proceeds benefit Sanford Luverne Hospice.

recycle.
reduce.
reuse.

Hospice Charity Dinner and Auction
Saturday, April 22
Grand Prairie Event Center, Luverne, MN

Tickets: \$55
Sponsor Tables of 8: \$75 per person

Purchase tickets at the Sanford Luverne Hospice office, 211 E. Main Street, Suite 101 or call (507) 283-1805.
Visa and MasterCard accepted.

Ticket sales begin February 13

GREAT PLANES TRAVEL **SANFORD Luverne**

018019-00159 Rev. 1/17

the classifieds

To place a classified ad in the Luverne Announcer, call 283-2333, stop by our office at 117 W. Main, Luverne, or visit www.star-herald.com.



SERVICES

Tree Tech Inc.
Luverne, MN
507-283-8552
507-920-6424 cell

tree removal
tree trimming
stump grinding
tree moving

CALL RICK OR CHANTEL TO
ADVERTISE IN THE ANNOUNCER!
283-2333

SERVICES

ELECTROLUX
Central Vacuums • Upright Vacuums
Canister Vacuums
Sales - Service - Supplies
ELAINE BOLT
507-442-7721 Edgerton, MN

Hamann Repair
Repairing all makes of
tractors, skid loaders,
combines and small
engines.

For all your parts needs call
507-283-0041
Over 30 years experience
The Intermarket Leader

David Hamann, Luverne
Open Mon.-Fri. 8 a.m. to 5 p.m.
Phone 507-283-0041



AUTOS WANTED

CARS/TRUCKS WANTED!!! ALL MAKES/ MODELS 2000-2016! ANY CONDITION. RUNNING OR NOT. TOP \$\$\$ PAID! FREE TOWING! WE'RE NATIONWIDE! CALL NOW: 1-888-985-1806

EMPLOYMENT

DRIVE WITH UBER. YOU'LL NEED A SMARTPHONE. IT'S FUN AND EASY. FOR MORE INFORMATION, CALL: 1-844-700-8936

FINANCIAL

SAVE YOUR HOME! ARE YOU BEHIND PAYING YOUR MORTGAGE? DENIED A LOAN MODIFICATION? IS THE BANK THREATENING FORECLOSURE? CALL HOMEOWNER'S RELIEF LINE NOW FOR HELP 855-402-3220

HEALTH & FITNESS

VIAGRA 100MG AND CIALIS 20MG! 50 PILLS

\$99.00 FREE SHIPPING! 100% GUARANTEED. CALL NOW! 1 -866-312-6061 HABLAMOS ESPANOL

MEDICAL

GOT KNEE PAIN? BACK PAIN? SHOULDER PAIN? GET A PAIN-RELIEVING BRACE AT LITTLE OR NO COST TO YOU. MEDICARE PATIENTS CALL HEALTH HOTLINE NOW! 1-844-502-1809

WANTED TO BUY

CASH PAID- UP TO \$25/BOX FOR UNEXPIRED, SEALED DIABETIC TEST STRIPS. 1-DAYPAYMENT. 1-800-371-1136

WANTS TO PURCHASE MINERALS AND OTHER OIL AND GAS INTERESTS. SEND DETAILS TO P.O. BOX 13557 DENVER, CO. 80201

MISCELLANEOUS

DISH SPECIAL! STOP PAYING FOR CHANNELS

YOU DON'T WATCH! STARTING AT \$39.99/MO. FREE NEXT-DAY INSTALLATION + FREE \$50 GIFTCARD WITH SIGNUP COURTESY OF SATELLITEDEALS CALL 866-620-9429

SOCIAL SECURITY DISABILITY BENEFITS. UNABLE TO WORK? DENIED BENEFITS? WE CAN HELP! WIN OR PAY NOTHING! CONTACT BILL GORDON & ASSOCIATES AT 1-855-498-6323 TO START YOUR APPLICATION TODAY!

SPECTRUM TRIPLE PLAY TV, INTERNET & VOICE FOR \$29.99 EA. 60 MB PER SECOND SPEED NO CONTRACT OR COMMITMENT. WE BUY YOUR EXISTING CONTRACT UP TO \$500! 1-855-652-9304

MAKE A CONNECTION. REAL PEOPLE, FLIRTY CHAT. MEET SINGLES RIGHT NOW! CALL LIVELINKS. TRY IT FREE. CALL NOW: 1-888-909-9905 18+.

LUNG CANCER? AND AGE 60+? YOU AND YOUR FAMILY MAY BE ENTITLED TO SIGNIFICANT CASH AWARD. CALL 866-428-1639 FOR INFORMATION. NO RISK. NO MONEY OUT OF POCKET.

READER ADVISORY: THE NATIONAL TRADE ASSOCIATION WE BELONG TO HAS PURCHASED THE ABOVE CLASSIFIEDS. DETERMINING THE VALUE OF THEIR SERVICE OR PRODUCT IS ADVISED BY THIS PUBLICATION. IN ORDER TO AVOID MISUNDERSTANDINGS, SOME ADVERTISERS DO NOT OFFER EMPLOYMENT BUT RATHER SUPPLY THE READERS WITH MANUALS, DIRECTORIES AND OTHER MATERIALS DESIGNED TO HELP THEIR CLIENTS ESTABLISH MAIL ORDER SELLING AND OTHER BUSINESSES AT HOME. UNDER NO CIRCUMSTANCE SHOULD YOU SEND ANY MONEY IN ADVANCE OR GIVE THE CLIENT YOUR CHECKING, LICENSE ID, OR CREDIT CARD NUMBERS. ALSO BEWARE OF ADS THAT CLAIM TO GUARANTEE LOANS REGARDLESS OF CREDIT AND NOTE THAT IF A CREDIT REPAIR COMPANY DOES BUSINESS ONLY OVER THE PHONE IT IS ILLEGAL TO REQUEST ANY MONEY BEFORE DELIVERING ITS SERVICE. ALL FUNDS ARE BASED IN US DOLLARS. TOLL FREE NUMBERS MAY OR MAY NOT REACH CANADA.

Midwest Free Community Papers Midwest Classifieds

Call 507-825-3333 or 800-325-6440 to place your Minnesota Free Community Paper classified ad.

AUTOMOBILES/MOTORCYCLES WANTED
MOTORCYCLES: TOP CASH PAID! For Old Motorcycles! 1900-1979. DEAD OR ALIVE! 920-371-0494 (MCN)

ADOPTION
PREGNANT? CONSIDERING ADOPTION? Call us first. Living expenses, housing, medical, and continued support afterwards. Choose adoptive family of your choice. Call 24/7. 855-390-6047 (Void in IL & IN) (MCN)

A childless married couple seeks to adopt. Will be hands-on mom & devoted dad. Financial security. Expenses PAID. Call Holly & Tiger. 1-800-790-5260 (ask for Adam) (MCN)

****ADOPTION:**** Child Psychologist & Successful Executive yearn for 1st baby to LOVE & Cherish Forever. 1-800-966-3065 Expenses paid *Abby & Jeff* (MCN)

ANNOUNCEMENTS
Machinery Consignment Sale, Mon., March 6th, 2017 at 9:00 A.M. Consign early by Feb. 17, 2017 for complete advertising. No Small Items, Tires or Pallet Items Accepted After Friday, Feb. 24. Next Machinery Consignment Sale is April 3, 2017. Gilbert's Sale Yard, 641-398-2218. 2 Mi. N. of Floyd, IA On Hwy. 218. Tractor House Internet Bidding Available. www.gilbertsaley.com (MCN)

AUTOMOBILES
DONATE YOUR CAR TO CHARITY. Receive maximum value of write off for your taxes. Running or not! All conditions accepted. Free pickup. Call for details. 855-752-6680 (MCN)

DONATE YOUR CAR, TRUCK OR BOAT TO HERITAGE FOR THE BLIND. Free 3 Day Vacation, Tax Deductible, Free Towing, All Paperwork Taken Care Of. 1-800-283-0205 (MCN)

EMPLOYMENT/HELP WANTED
Drive with Uber. You'll need a Smartphone. It's fun and easy. For more information, call: 1-800-902-9366 (MCN)

CLASS-A CDL Regional Driver. Good home

time. Great pay and benefits. Matching 401k. Bonuses and newest equipment. No touch freight. Experience needed. Call Scott 507-460-9011. Apply on-line WWW.MCFGTL.COM (MCN)

PAID IN ADVANCE! Make \$1000 Weekly Mailing Brochures From Home! No Experience Required. Helping home workers since 2001! Genuine Opportunity. Start Immediately! www.IncomeMailers.net (VOID IN SD, WI) (MCN)

MAKE \$1,000 WEEKLY! Paid in advance! Mailing Brochures at Home! Easy pleasant work. Begin Immediately! Age unimportant! www.homemoney77.com (MCN)

FINANCIAL
Are you in BIG trouble with the IRS? Stop wage & bank levies, liens & audits, unfiled tax returns, payroll issues, & resolve tax debt FAST. Call 888-606-6673 (MCN)

STUDENT LOAN PAYMENTS got you down? We can help reduce payments and get finances under control, call: 866-871-1626 (MCN)

FOR SALE
FRUIT & NUT TREES. Blueberry, Strawberry, Grape, Asparagus, Evergreen & Hardwood Plants & MORE! FREE catalog. WOODSTOCK NURSERY, N1831 Hwy 95, Neillsville, WI 54456. Toll Free 888-803-8733 wallace-woodstock.com (MCN)

Trailer Close-Out Sale! New ST205/75D15 on mod wheel \$69.00; 4 place snowmobile trailers 20' & 24'; Fuel Tank trailers: 500 gallon, 990 gallon & no tank trailers; 7'X16' V-nose ramp door \$4,199.00; 14,000# skidloader trailer \$3649.00. Trailer Repairs, Hitches, Parts and much more. 515-972-4554 www.FortDodgeTrailerWorld.com for prices & information!(MCN)

HEALTH & MEDICAL
LIVING WITH KNEE OR BACK PAIN? Medicare recipients may qualify to receive a pain relieving brace at little or no

cost. Call now! 844-668-4578 (MCN)

Stop OVERPAYING for your prescriptions! SAVE! Call our licensed Canadian and International pharmacy, compare prices and get \$25.00 OFF your first prescription! CALL 1-800-263-4059 Promo Code CDC201625 (MCN)

DIGITAL HEARING AIDS - Now offering a 45-Day Risk Free Offer! FREE BATTERIES for Life! Call to start your free trial! 855-982-0724 (MCN)

OXYGEN - Anytime. Anywhere. No tanks to refill. No deliveries. The All-New Inogen One G4 is only 2.8 pounds! FAA approved! FREE info kit: 844-852-7448 (MCN)

Got Knee Pain? Back Pain? Shoulder Pain? Get a pain-relieving brace at little or NO cost to you. Medicare Patients Call Health Hotline Now! 1- 800-604-2613 (MCN)

ATTENTION: VIAGRA AND CIALIS USERS! A cheaper alternative to high drug-store prices! 50 Pill Special - \$99 FREE Shipping! 100 Percent Guaranteed. CALL NOW: 1-800-795-9687 (MCN)

Viagra!! 52 Pills for Only \$99.00! Your #1 trusted provider for 10 years. Insured and Guaranteed Delivery. Call today 1-888-403-7751 (MCN)

MISCELLANEOUS
Spectrum Triple Play: TV, Internet & Voice for \$29.99 ea. 60 MB per second speed. No contract or commitment. We buy your existing contract up to \$500! 1-800-919-3588 (MCN)

Exede satellite internet. Affordable, high speed broadband satellite internet anywhere in the U.S. Order now and save \$100. Plans start at \$39.99/month. Call 1-800-712-9365 (MCN)

DISH TV - BEST DEAL EVER! Only \$39.99/mo. Plus \$14.99/mo Internet (where avail.) FREE Streaming. FREE Install (up to 6 rooms.) FREE HD-DVR. Call 1-800-390-3140 (MCN)

A PLACE FOR MOM. The nation's largest senior living referral service. Contact our trust-

ed, local experts today! Our service is FREE/ no obligation. CALL 1-800-442-5148 (MCN)

ALL THINGS BASEMENT! Basement Systems Inc. Call us for all of your basement needs! Waterproofing, Finishing, Structural Repairs, Humidity and Mold Control. FREE ESTIMATES! Call 1-800-640-8195 (MCN)

GET HELP NOW! One Button Senior Medical Alert. Falls, Fires & Emergencies happen. 24/7 Protection. Only \$14.99/mo. Call NOW 1-888-840-7541 (MCN)

ADT Security protects your home & family from "what if" scenarios. Fire, flood, burglary or carbon monoxide, ADT provides 24/7 security. Don't wait! Call Now! 1-888-607-9294 (MCN)

Switch to DIRECTV. Lock in 2-Year Price Guarantee (\$50/month) w/AT&T Wireless. Over 145 Channels PLUS Popular Movie Networks for Three Months, No Cost! Call 1-800-203-4378 (MCN)

SWITCH TO DIRECTV. From \$50/Month, includes FREE Genie HD/DVR # 3 months HBO, SHOWTIME, CINEMAX, STARZ. Get a \$50 Gift Card. Call 877-894-5275 (MCN)

Change the way you watch TV- Get rid of cable and get DIRECTV! You may also qualify to receive \$100 VISA gift card when you sign up today - Limited time Only. CALL NOW! 844-359-1203 (MCN)

Free Pills! Viagra!! Call today to find out how to get your free Pills! Price too low to Mention! Call today 1-877-560-0997 (MCN)

CASH PAID for unexpired, sealed DIABETIC TEST STRIPS! 1 DAY PAYMENT & PREPAID shipping. HIGHEST PRICES! Call 1-888-389-0695. www.cash4diabeticsupplies.com (MCN)

PERSONALS
MEET SINGLES RIGHT NOW! No paid operators, just real people like you. Browse greetings, exchange messages and connect live. Try it free. Call now: 800-357-4970 (MCN)

the classifieds

To place a classified ad in the Luverne Announcer, call 283-2333, stop by our office at 117 W. Main, Luverne, or visit www.star-herald.com.

AGRICULTURAL

We have several crews of rock pickers and we also do any type of farm work. Call 712-943-2084. (tc)

CARDS OF THANKS

When someone you love becomes a memory, the memory becomes a treasure. The family of Bev Christensen extends a heartfelt thank you for the many words of comfort and support and kind acts of love conveyed to us as we grieve the loss of a wonderful wife of 70 years and devoted mother. Many of you expressed what we believe – she was a “great lady” and her smile will be missed but not forgotten.

Virgil Christensen
(1.9-1.12)

RENTALS

Large two-bedroom apartment in Hills. Utilities furnished except electricity. Available March 1st. Call Al Small at 605-759-4149. (2.9-2.26)

One-bedroom apartment for rent in Luverne: stove and refrigerator furnished, off the street parking. No pets or smoking. \$400/month utilities included. Security deposit and local references required. Text or call 605-370-2251. (2.2-2.19)

WINDOWS

We custom build and install Energy Star Therm-O-Loc Windows. Call Mike at Adrian Glass for a free in-home demonstration and estimate. 101 E. Pearl, Adrian, MN 56110. 507-483-2228 or 605-770-7677 or email mbyler@santel.net. (tc)

FOR SALE

2002 Buick LaSaber - 85K, Nice. 2006 Dodge Dakota - 2x4 135k, nice \$5900. 2013 Hyundai Accent - 57k \$7995. Call Curtis at 605-413-8862. (2.9-2.26)

MISCELLANEOUS

Adult Prom Forster Community Center, Rock Rapids IA 8:00pm-12:00am, Saturday March 4 Come and dance the night away and relive the high school days! Formal attire, of any era, or come as you are! Must be 21 or older, ID check at the door. \$15 per individual, \$25 if you come as a couple, tickets at the door. Rock Rapids Fire Department will be selling beverages! Can't wait to see you there! (2.9-2.26)

HAVE A UNIQUE SERVICE OR BUSINESS? Get the word out to over 1.4 million households. Call WIDE AREA CLASSIFIEDS today, 507-359-7326. (tc)

EMPLOYMENT

Southwestern Youth Services, a nonprofit residential behavior treatment center for boys ages 10-20, is seeking applications for a full-time teacher for the 2017-2018 school year, mid-August to early June. Summer teaching is optional. Hours are 7:30-3:30, M-F, with paid holidays. MN teaching license required but will consider SD teaching license with the understanding that application for a MN license would occur within one year. All certifications considered. Salary based on experience. SYS is located one mile north of Interstate 90 in Magnolia, MN, 26 miles east of Brandon and 27 miles west of Worthington. For more information, please email Carole Naasz at cnaasz@southwestyouth.org. (2.9-2.26)

Grace Lutheran Church, Luverne, MN is seeking a full-time Office Manager. The ideal candidate will possess strong interpersonal, organizational and critical thinking skills, be proficient in word processing, excel, publisher, quick books and other software necessary to communicate and track church information. This position works closely with pastors and staff, volunteers, and parishioners, supporting the core values of our church. Typical hours are Monday through Friday 8 a.m. to 5 p.m., with occasional other hours. A copy of the position description is available at the Grace Lutheran Church office, or by calling 283-4431. To apply, please submit a resume to Grace Lutheran Church c/o Pastor Ron Nichols, 500 N. Kniss Ave. Luverne, MN 56156. This position will be opened until filled. (2.9-2.26)

Part-time RN Manager for 6 bedroom elderly care home in Luverne. Flexible hours with some opportunity of working from home. Call for details 612-269-2748. (2.9-2.26)

SUMMER JOBS
Fun and rewarding summer jobs that looks great on your resume and jobs after retirement! Applications are being accepted for seasonal summer employment at: Palisades State Park (Garretson) and Big Sioux Rec. Area (Brandon). Campground attendant, security, supervisor, education, maintenance, crew leader, and law enforcement. Crew Leader position will work from April 1 through October 31. Education coordinator to implement and lead our summer park programs. Application deadline 2/28/2017. Must be at least 17 years old by date of hire. Salaries from \$9.60-17.00/hour. Information and applications can be found online at: <https://bhr.sd.gov/workforus/gfp.aspx>. Questions can be answered at: Palisades and Big Sioux - 605-594-3824 EOE (12.22-2.16)

EMPLOYMENT

Nursing Assistant: Parkview Manor has openings for part-time nursing aides with benefits to include: health insurance, public retirement plan, and holiday pay. New wages \$11.90/hr. or more with experience. \$2000 scholarships available for students. Will provide training or pay for experience. Contact Darnell Krull, 308 Sherman Ave. Ellsworth, MN 56129 or call 507-967-2388. (tc)

Registered Nurse/LPN-Parkview Manor, a municipal skilled nursing facility is accepting applications for a part-time charge nurse position. Wages commensurate with experience. \$2000 scholarship available for students. Benefits include vacation, holiday, and PERA retirement plan. Contact Darnell Krull 308 Sherman Ave., Ellsworth, Mn 56129 or call 507-967-2482. (tc)

Carpenters and Labor Hiring, Luverne, MN. We are currently looking for Carpenters, Labor positions in or near Luverne. Please apply at Design Craft of Luverne, Inc., 904 Commerce Road, Luverne, MN or call 507-283-2600, hourly wage based on experience.(2.12-3.2)

HELP WANTED

CHS Eastern Farmers Luverne, MN is looking for a full-time **semi-feed truck driver**. Must have a CDL and clean driving record. CHS Eastern Farmers offers a competitive pay and benefits package. **Apply by calling Gary at 507-283-4418 to set up an appointment.**



EMPLOYMENT

HELP WANTED

Howling Dog Luverne is looking for wait staff, bartenders and cooks.



Help Wanted



Exchange State Bank, Luverne, continues to grow in our community and has an excellent opportunity for a full-time customer service representative. It is beneficial to have, but not required, previous banking/teller experience in conducting transactions, internal processing and providing exceptional customer service to customers in a community bank or equivalent retail setting. The successful candidate will be a team player with a strong work ethic, detail orientated, excellent oral and written communication skills, and time management skills. Exchange State Bank offers competitive wages and benefits; including health, dental, vision insurance and a 401k plan. Qualified candidates should mail their letter of application and resume to: Exchange State Bank PO Box 487, Hills, MN 56138 Attn: Trista Bosch. No resumes/applications accepted after March 1, 2017.



EMPLOYMENT

SON-D-FARMS

ADRIAN is hiring General Farm, Hog, Field Work, Truck Driver, Maintenance person, Farm Shop Mechanic & Farm Delivery Person. Experience wanted but willing to train. PTO benefits. Call (507) 483-2245, 370-1590 or e-mail office@sondfarms.com

Exchange State Bank, Luverne, continues to grow in our community and has an excellent opportunity for a full-time customer service representative.

It is beneficial to have, but not required, previous banking/teller experience in conducting transactions, internal processing and providing exceptional customer service to customers in a community bank or equivalent retail setting. The successful candidate will be a team player with a strong work ethic, detail orientated, excellent oral and written communication skills, and time management skills. Exchange State Bank offers competitive wages and benefits; including health, dental, vision insurance and a 401k plan. Qualified candidates should mail their letter of application and resume to: Exchange State Bank PO Box 487, Hills, MN 56138 Attn: Trista Bosch. No resumes/applications accepted after March 1, 2017.

Exchange State Bank is an Equal Opportunity Employer of women, minorities, protected veterans and individuals with disabilities”



HILLS-BEAVER CREEK PUBLIC SCHOOLS
Hills-Beaver Creek School District
301 N. Summit Avenue - PO Box 547
Hills, Minnesota 56138
Website: www.hbc Patriots.com
Email: t.holhaus@isd671.net
Telephone: (507)962-3240 Ext. 13

Vacancy Notice Long Term Substitute (Paraprofessional)

Position: Long Term Substitute Special Needs Paraprofessional at Hills-Beaver Jr./Sr. High School
Qualifications: Candidate must have two year degree or 60 hours of college credits and be willing to fulfill the required competencies for eligibility
Application Deadline: Open Until Filled
Applications Materials: Letter of interest and District Application
Hours: 8 am - 3:15 pm - School days
Starting Date: Expected Start Date of March 13
Ending Date: Approximately 6 weeks
Apply to: Principal, Todd, Hills-Beaver Creek Jr./Sr. High School, PO Box 547, 301 N. Summit Ave, Hills, MN 56138
- An Equal Opportunity Employer -
February 2, 2017

SHOP SPACE FOR LEASE in Luverne

Good location. Available July 1. Approximately 2,000 sq. ft. Can build to suit needs
507-360-7844

Interested in Advertising?
Call Rick or Chantel to advertise in the Announcer
283-2333

RENTALS

BLUE MOUND TOWER

Luverne HRA • Blue Mound Tower
216 McKenzie Street
Luverne, MN 56156
507-283-4922

Apartment available!

- All Ages Welcome
- Close to Senior Dining
- Close to Minnesota West College
- Income Based
- Handicap Accessible
- Pet Friendly
- Smoke Free
- Secure Entry System
- On Site Laundry
- Utilities included

DENTAL Insurance
Physicians Mutual Insurance Company

A less expensive way to help get the dental care you deserve

- ✓ If you're over 50, you can get coverage for about \$1 a day*
- ✓ Keep your own dentist! NO networks to worry about
- ✓ No wait for preventive care and no deductibles - you could get a checkup tomorrow
- ✓ Coverage for over 350 procedures - including cleanings, exams, fillings, crowns...even dentures
- ✓ NO annual or lifetime cap on the cash benefits you can receive

FREE Information Kit
1-877-308-2834
www.dental50plus.com/cadnet

Physicians Mutual
Here's the information you requested on Dental Ins.
Your Name H

*Individual plan. Product not available in MN, MT, NH, RI, VT, WA. Acceptance guaranteed for one insurance policy/certificate of this type. Contact us for complete details about this insurance solicitation. This specific offer is not available in CO, NY, call 1-800-969-4781 or respond for similar offer. Certificate C250A (ID: C250E; PA: C2500); Insurance Policy P150 (GA: P150GA; NY: P150NY; OK: P150OK; TN: P150TN) 6096C MB16-NM001Gc

EMPLOYMENT

Help Wanted Internet Installer/Repair Technician

Lismore Cooperative Telephone Company is seeking a full-time individual to become a member of our team providing hybrid broadband service in and around Lismore, MN. The work will include installation of our new wireless internet, maintenance and repair. Applicant must be comfortable with heights and have the ability to work in a customer orientated, fast-paced environment. Submit resume and letter of application to: Lismore Cooperative Telephone Company, PO Box 127, Lismore, MN 56155. Email: info@lismoretele.com by February 20 or until position is filled.

Lismore Coop Telephone Co.
Lismore, MN
(507)472-8748

MAKE THE WISE CHOICE!

RECYCLE THIS NEWSPAPER!

Pilgrim's
GNP Business Unit and "Mother Hen" of Golden Pump and JUST BARE Chicken

At Pilgrim's our goal is to become the BEST and MOST RESPECTED company in our industry, creating the opportunity of a BETTER FUTURE for our team members.

We are currently seeking candidates to join our production team at our Luverne, MN location. Day shift and Afternoon shift production opportunities available. Applications available at the plant. Starting wage \$12 for day shift, \$13 for afternoon shift. Full benefit package.

An Affirmative Action Employer

Immediate Job Openings

EARN EXTRA CASH BY DELIVERING THE ANNOUNCER

Luverne Announcer carriers needed for

LUVERNE

Luverne ANNOUNCER
117 W. Main Street, Luverne

Call 283-2333 or stop in at the Announcer Office. (Ask for Jenn)



DeBoer
EDGERTON
507-442-4341

TRUCK MONTH



<p>NEW</p>  <p>WAS: \$54,430 \$46,619</p> <p>2017 CHEVROLET SILVERADO 1500 LTZ, Z71, HTD & COOLED LEATHER #1714</p>	<p>NEW</p>  <p>WAS: \$68,485 \$60,006</p> <p>2017 CHEVROLET SUBURBAN 1LT PACKAGE #1738</p>	<p>NEW</p>  <p>WAS: \$47,320 \$39,960</p> <p>2017 CHEVROLET SILVERADO 1500 LT, ALL STAR PKG, HTD SEATS #1704</p>
 <p>WAS: \$23,800 \$22,985</p> <p>2006 CHEVROLET SILVERADO 2500HD LT, LBZ DURAMAX-ALLISON 149K #1757B</p>	 <p>WAS: \$31,500 \$30,450</p> <p>2014 CHEVROLET TRAVERSE LTZ, NAV, DVD SURR., BOSE, AWD, 35K #1765A</p>	 <p>WAS: \$29,825 \$27,450</p> <p>2013 RAM 2500 LARAMIE, ALUM. WHEELS, 111K #16114A</p>





www.deboerchev.com

FLOWERS SAY IT BEST



Darling
\$39⁹⁵





Open Heart
\$34⁹⁵





Teddy Bear Bouquet
\$24⁹⁵

Candy Bouquets starting at \$7⁹⁵

Luverne Flowers & Greenhouses
811 W. Warren • 283-4451 





Luverne Area
Community Foundation
invites you to join us
in February "Heart
Month" to raise funds
for our AED grant
program.

There are 32 AED throughout Rock County and they all need to be serviced with new batteries and pads annually.

ADVERTISE IN THE ANNOUNCER!
 CALL RICK OR CHANTEL
 283-2333



- Ready built homes •Andersen windows •Cabinets
- Siding •Doors •Quality lumber at great prices (compare)
- All Homes are state inspected to meet requirements
- Custom Blueprinting •Delivery Available
- No need to wait in lines

Call Randy or Harlan about your plans

 **Country Lumber**

507-442-4821 • Box 247 • Leota, MN

GIVE \$ - SAVE LIVES

Join us the month of February as we raise funds to continue this lifesaving grants program. All month we will hang a lifesaving heart in the window for every donation received. Help us fill the window with love and life! Minimum donation for a window heart is \$50.

Give Where You Live
today, tomorrow & beyond

YOU ARE INVITED TO AN

Open House

TO SEE OUR NEWLY REMODELED OFFICE

Main Location - Downtown Luverne



WEDNESDAY, FEBRUARY 15
NOON - 4 P.M.

116 E MAIN ST, LUVERNE

Refreshments will be served



MINNWEST BANK

Member FDIC www.minnwestbank.com MoneyLine 888-616 BANK
116 East Main Street • Luverne • 507-283-2366





Wow!

That's a lot of vehicles, but NAPA Filters has got 'em covered.



Farm/Fleet Filter Sale

NAPA Filters' Spring Sale

Up to

40% off



AUTO PARTS


February 13-28, 2017

106 South Estey Street, Luverne, MN | 507-283-4483

Join us for the launch of a unique and powerful event in Luverne
It just may change the way you look at your life... and your death.


THE CONVENINGS: LUVERNE

Based on a series of remarkable broadcast conversations Minnesota Public Radio's Cathy Wurzer had with the University of St. Thomas dean Bruce Kramer and their book "We Know How This Ends: Living while Dying." Bruce Kramer died in 2015 after living with ALS.



The Convenings

Real Families. Real Choices. Real Life.




Thursday, February 16
6:30pm - 8:00pm
Luverne High School Theatre
709 N. Kniss Ave.

Cathy will be signing books

Join Cathy and special guests for an evening of music, storytelling and meaningful conversation about living and dying well.

Sign up at www.honoringchoices.org/the-convenings or call 507-449-1272



Honoring Choices[®]
MINNESOTA
An initiative of the Faith Care Network Society

The Daily News of Rock County

star-herald.com