

# A Luverne ANNOUNCER

117 West Main St. • Luverne, MN 56156-0837 • Phone 507-283-2333 • Address Service Requested

PRSR STD  
U.S. POSTAGE  
PAID  
Permit No. 22  
Page 1 Printers  
Postal Customer

VOLUME 87 NUMBER 2

ROCK COUNTY'S FREE CIRCULATION PUBLICATION SINCE 1931

January 8, 2017

## Community Update

### Meetings

**Staline Cemetery Association Annual Meeting** will be at 12:30 p.m. Monday, Jan. 9, at the Pizza Ranch in Rock Rapids, Iowa. Call 507-920-2871 with questions.

**Blue Mound Quilters** will meet at 7 p.m. Monday, Jan. 9, at the Luverne Senior Center. Mary Akkerman will be in charge of the program.

**Matthew 6 Board of Directors** will meet at 7 p.m. Monday, Jan. 9, at the Pizza Ranch in Luverne.

**American Legion Post 123 and Auxilliary** will meet at 7:30 p.m. Wednesday, Jan. 11, in the Post home.

**Beaver Creek Township** will meet at 7:30 p.m. Thursday, Jan. 12, in the township hall.

**Lady Luverne Red Hats** will meet for lunch at the Senior Dining Center at 11:30 a.m. Friday, Jan. 13. Bring your Red Hat items for the Red Hat Rummage Sale. For a reservation call Senior Dining at 283-9846 by Thursday, Jan. 12.

**MS Support Group** will meet at 7:30 p.m. Thursday, Jan. 19, at Southwest Health and Human Services in Luverne. All persons with MS, family and friends are invited. Call 283-2069.

**Parkinson Support Group** will meet at 1 p.m. Thursday, Jan. 19, at St. John Lutheran Church. Contact Dianne Karlstad at 507-530-3307 for more information.

**Vienna Township** meets at 7 p.m. the second Tuesday of each month at the Kenneth Community Center.

**Narcotics Anonymous** will meet every Thursday evening at 6:30 p.m. at the Steen Reformed Church. Contact Robert for more information 507-329-2642.

**Women's Alcoholics Anonymous** meets at 8 p.m. Mondays in the United Methodist Church.

**Al-Anon** meets from 6:30 to 7:30 p.m. Wednesdays in the Buffalo Ridge Meeting Room (lower level) at the Sanford Medical Center in Luverne. Call Stephanie at 507-449-1246.

**Narcotics Anonymous** meets at 7 p.m. Fridays and for basic text study at 7:30 p.m. Tuesdays in the basement of St. Catherine Catholic Rectory, 203 E. Brown St., Luverne. Use east door. For more information call 507-220-0137.

**Alcoholics Anonymous** meets at 8 p.m. Wednesdays and Saturdays in the United Methodist Church, Luverne. Call 605-321-4324.

**Alcoholics Anonymous and Al-Anon** meet from 8 to 9 p.m. every Tuesday in Runals Memorial Hall, Edgerton. Call Naomi, 507-215-2956, with questions.

### Community Ed basketball tourney Jan. 28

Luverne Community Education is sponsoring an invitational basketball tournament Saturday, Jan. 28, for both boys' and girls' fifth- and sixth-grade basketball teams. Format guarantees each team at least two games. Teams can register at [www.isd2184.net](http://www.isd2184.net) under Community Education or call 507-283-4724. Cost is \$125 per team, and payment must accompany registration.

### 'Getting Ready for the Next Generation'

The Blandin Foundation and Southwest Regional Development Corporation have combined with other area groups to bring Tom Hubler (known as the "dean" of family businesses) and Steve Coleman (facilitator of business transition forums) to present **Succession Planning: Getting Ready for the Next Generation**. This five-session evening class begins Jan. 31. The first three sessions will split into two groups — one being the business owner looking at change, and the other being the prospective small business owner down the road. The last two classes combine both groups to work on business plans, sale packets, financing and other issues. The fee is \$95.

### Register by Jan. 30 for Driver's Ed

Students in eighth grade and older may register for Student Driver Education class by Jan. 30 for the class that begins Feb. 6 or by June 12 for the class that begins June 19. Limited seats available. Fee is \$325 due at the time of registration at the Luverne Community Education office.

### Winter Carnival Feb. 4

Luverne Music Boosters annual Winter Carnival will be from 5 to 9 p.m. Saturday, Feb. 4, in the Luverne High School gym for families and children of all ages. The event, which raises money for music programs in Luverne schools, features carnival-style games, prizes, Bingo, raffle drawing, cake walk, cotton candy, root beer floats, pizza and more.

### Community Ed announces classes

**Discovery Time Preschool** has openings for children ages 4 and 5 year olds in January. Registrations for Fall 2017 are also open. Call 283-4724 for more information.

## Rock County STAR HERALD

Coming this week in the  
Rock County Star Herald



John Rittenhouse photo/0112 gym 3

### Strong start

Meghan Witte and the Luverne gymnastics team returned from the Christmas break by posting a convincing home win over West Central Tuesday. Witte placed fourth on the bars and floor to help the Cardinals record a 132.6-113.2 victory. Read about the meet in Thursday's Star Herald.

Providing excellent academics and co-curriculars that promote high academic achievement to develop lifelong learners and productive citizens

Academics

# Luverne Public Schools

[www.isd2184.net](http://www.isd2184.net)



Art

Sports

Ag & Industrial Arts

Forensics

Music

Foreign Languages

Scholarships

Alternative School

College Credits

Dollars for Scholars

Special Education



Photo: Jim Juhl/Myhre Studio

**Open Enrollment Deadline January 15, 2017**

Open enrollment forms are available at [www.isd2184.net](http://www.isd2184.net) and in the district office

**Get all your Car Licenses & Title Transfers at**  
**DEPUTY REGISTRAR'S 141 INC.**  
 821 Main Street • Edgerton • 507-631-1028  
**Business Hours:**  
 Monday through Friday, 8 a.m. - Noon, 1 p.m. to 5:15 p.m.  
 Saturday 8 a.m. to noon and  
 Wednesday evenings 6:15 p.m. to 8 p.m.  
**NOW OFFERING FAST TRACK**

**Ketterling Services, Inc.**  
 401 S. Cedar St. • Luverne, MN • 507-283-2863 • www.ketterlingservicesinc.com  
 Hours: Tues.-Fri. 8:30 a.m. to Noon & 1 p.m. to 5 p.m. Sat. 8:30 a.m. to Noon  
**Roll-Off Service for Building Demo & Remodeling**

**SANITATION:** Commercial Residential Rural  
**RECYCLING:** Collection Dropoff

Monthly - Weekly - Daily

**Orv & Sons, Inc.**  
 Plumbing ~ Heating ~ Cooling  
 507-967-2464  
 Office hours: M-F 7:30-noon & 1-5 ~ Sat 7:30-9 a.m.  
 \*Licensed for pump installation, sewer installation & Backhoe services  
 \*Roto-rooter, Pipe Location & Camera Inspection System  
 \*Oxyblast-water treatment Product  
 \*Lennox Furnaces & Air Conditioners  
**\*\*NOW ACCEPTING CREDIT CARDS\*\***  
 308 S. Broadway St. Ellsworth, MN

**Cragoe Realty**  
 Selling Real Estate in the Heart of the Prairieland.  
 Your hometown real estate broker for over 22 years  
 Scott Adams, broker 507-227-0840  
 Gene Cragoe, broker lic. in MN & SD info@cragoe.com  
 507-283-2647 or 800-689-2647

**We have buyers! WE NEED YOUR LISTING!**

**LUVERNE'S LOCALLY-OWNED AND OPERATED MLS AGENCY FOR COMPLETE LISTINGS LOG ONTO WWW.CRAGOE.COM**

The first step to successfully selling your home is *listing it with us!*

**Duane J. Mulder Realty**  
**DUANE MULDER AUCTION SERVICE**  
 Office 507-283-4901

**AUCTION SCHEDULE**  
 Currently Taking Consignments For Our Next Indoor Auction At The Duane Mulder Auction Center, Downtown Beaver Creek, MN. **Yes, we sell cars, pickups, trailers, campers & boats on these auctions.** Call 507-283-4901 Or 507-220-3558 To Get Your Items Consigned To This Auction.

**DUANE MULDER** - Auctioneer - Real Estate Broker - Certified Agricultural Appraiser. Office Phone 507-283-4901 - Cell Phone 507-220-3558.

**WINTER CLEARANCE BEGINS**  
**30%-75% off** all winter merchandise  
 \*Shoes \* Winter Coats \* Jeans \* Misc. Decor \* Sweaters \* Infant \* Plus Size

call to make your spring consignment appointment

**200 Maine Ave., Adrian 507-483-2050**  
 Hours: Tues, Wed, Fri 9 a.m. - 5 p.m.; Thurs, 9 a.m. - 7 p.m.; Sat, 9 a.m. - 3 p.m.

**loset to loset Inc. Consignment**

**747 N CEDAR, LUVERNE | \$121,900**

Beautiful classic 2 story home offers 9' ceilings, gorgeous woodwork, columnnades, pocket door and 6" floor trim. The upper floor has 3 bedrooms all with hardwood floors under the carpeting or have already been exposed and a full bath. Down the beautiful open staircase you will find a roomy front foyer with coat closet, a large living room with lots of natural light, formal dining room, wonderful country style kitchen with lots of cabinets and countertop space, and a half bath. In the lower level is a large family room or a possible 4th bedroom and a nice storage, utility and laundry room. On the front of the house is a spacious covered porch perfect for relaxing on! In the mood for a cozy fire, go to the north side of the house and enjoy or entertain on the concrete patio which includes a nice decorative block firepit. Outside you will also find a 12' x 20' wood deck, an oversized 2 stall garage with new shingles, a 20' x 20' storage shed and a big back yard. This big corner lot covers half of a city block and walking distance from the schools. This wonderful home is waiting for you!

**Beaver Creek Township Filing Notice**

Filing for township supervisor for a three-year term. Filing will open on January 1, 2017 and closes January 15, 2017 at 5:00 p.m.

File with the Beaver Creek Township Clerk.  
 Kathy King, Clerk  
 Beaver Creek Township

**ROCK COUNTY TOWNSHIP ASSOCIATION FILING NOTICE**

Filing for township supervisor for a three-year term: Beaver Creek, Clinton, Kanaranzi, Luverne, Magnolia, Mound, Springwater

Filing for township treasurer for a two-year term: Clinton, Kanaranzi, Luverne, Magnolia

Filing is open until January 17, 2017 at 5:00 p.m. Each filing must file with the Clerk, within their township.

Pete Bakken, Secretary-Treasurer  
 Rock County Township Association

**Real Estate Retrievers**  
 ALL STATE TEAM  
 Keith Elbers, Realtor/Auctioneer 507-920-6131  
 Deb Anenson, Realtor/Office Manager/Broker Assistant 507-920-9921  
 Matt Larson, Broker  
 Gene Anenson, Realtor 507-920-9920  
 Jen Rolfs, Realtor 507-227-2985

LUVERNE, MN • 507-283-4216  
 HILLS, MN • 507-962-3433

REALESTATEREtrievers.COM • REALTOR.COM • HOMEVIEWSIoux FALLS.COM

•Ready built homes •Andersen windows •Cabinets  
 •Siding •Doors •Quality lumber at great prices (compare)  
 •All Homes are state inspected to meet requirements  
 •Custom Blueprinting •Delivery Available  
 •No need to wait in lines

Call Randy or Harlan about your plans

**Country Lumber**  
 507-442-4821 • Box 247 • Leota, MN

**DEDICATED TO EXCELLENCE**

When you are buying or selling a home, you need a real estate professional dedicated to excellence to guide you through the transaction. You can count on Real Estate Retrievers! We provide the service that gets homes sold (and bought) for the best price and excellent terms.

Contact Real Estate Retrievers anytime to talk about your real estate needs.

**FEATURED LISTING**  
**211 W. Dodge, Luverne ————— \$169,900**  
 Home would describe this lovingly cared for two-story, 4 bedroom home. Enter your new home through the front entry with beautiful hardwood floors and an open staircase. Upon entering to your left enjoy your evenings by the cozy wood burning fireplace in your living room which can also be viewed from the dining room. The kitchen, which is flooded with natural light allows you to enjoy cooking family meals with a breakfast bar for those quick bites to eat or enjoy sit down meals in your dinette area or formal dining room. Kitchen appliances stay, including the fridge in the attached garage. Updated 1/2 bath on the main along with an office or den finish off the main floor. Retreat to the upper level to your spacious master suite with 3 additional generous sized bedrooms. Beautiful hardwood floors throughout the upper level, along with all new windows in 2014. A large rec/TV room, storage/laundry area with shower and 1/2 bath will complete the basement level of your new home. Call today!

**Loans, leases, and crop insurance**

**Pat Barnett**  
 866-601-0506

**AgStar**  
 Financial Services, ACA  
 AgStar.com

AgStar Financial Services is an equal opportunity employer and provider.

**Winter Hours**  
 Weekdays: 9am-5:30pm  
 Saturdays: 9am-noon  
 \*Thursday nights and Saturdays are on a seasonal schedule.  
 Saturdays from Labor Day to Memorial Day.  
 Thursday nights from Memorial Day to DEC 31.

**PRINT EXPRESS**  
 SCREEN PRINTING & EMBROIDERY  
 507-283-1770 • 888-283-1770  
 LUVERNE, MN  
 luvprintexpress.com

**Elbers Auction Service**  
 "Quality Auctions Since 1988"

Keith Elbers  
 AUCTIONEER/REAL ESTATE SALES WWW.ElbersAuction.com  
 Lic #67-62

**RECYCLE NEWSPRINT!**

**Here's My Card**  
 Your Quick & Easy Guide to Area Businesses

**ROCK COUNTY CHIROPRACTIC**  
 • Men, Women & Children's Health  
 • Custom Orthotics • Kinesiotape • Athletic Care • Massage Therapy • Work & Auto Injuries • Postural Restoration

DR. MICHAEL SMITH  
 WWW.ROCKCOUNTYCHIROPRACTIC.COM  
 283-2561 • 103 E. MAIN, LUVERNE  
 Monday 7:30 a.m. - 6 p.m. • Tuesday 7:30 a.m. - 3 p.m.  
 Wednesday 7:30 a.m. - 6 p.m. • Thursday 7:30 a.m. - 1 p.m.  
 Friday 7:30 a.m. - 5 p.m.

Most Insurance Accepted

**Loosbrock Electrical Construction, LLC**

Licensed • Bonded • Insured  
 Residential • Commercial • Industrial • Agriculture

Scott Loosbrock  
 Owner  
 507-360-5418 • scott@loosbrockelectric.com  
 www.loosbrockelectric.com

**McClure**  
 PLUMBING, HEATING, AIR CONDITIONING, INC.  
 412 S. Kniss • Luverne, MN • 507-449-2828

Jerry Buss Lic. #002732PM  
 TROY Buss Lic. #005573PM

**RAIN-BIRD** **CARRIER**  
**LENNOX** **BRADFORD WHITE**

SD # Luv-MN-R1117-98-1262C  
 \*Licensed, Bonded and Insured in Minnesota and South Dakota\*

**CLEVERINGA CONSTRUCTION**  
 507-920-5631

• For All Your Building Needs • Additions • New or Remodel  
 www.cleveringaconstruction.com

Merlin Cleveringa 879 - 100th Ave., Luverne, MN  
 507-283-2698 Home Lic. # BC-20552185

**Stroeh's Auto Center**

We provide complete auto care for any make or model vehicle, from oil changes to engine repairs

Alan Stroeh • 321 E Main St. • Luverne • 283-4226  
 www.stroehsauto.com

**Preston Power**

Preston Neese 507-227-9156  
 Owner PO Box 151  
 h Prestonpower@gmail.com Magnolia, MN 56158  
 small engine repair \* snowblowers - all makes & models

**ROCK MOTORSPORTS**  
 MOTORSPORTS AND POWER EQUIPMENT  
 PARTS - SERVICE  
 507-449-4386

Bill Anenson - Owner  
 621 S Kniss Ave Luverne, MN 56156

**Rock County EYE CLINIC**  
 Dr. Sandra Carman  
 507-283-2345  
 102 N. Freeman Ave., Luverne, Minnesota

**FRANKEN CONSTRUCTION**  
 Travis Franken, Lic #20627458 & Insured  
 1332 181st St., Luverne  
 507-920-8253

REMODELING • NEW ADDITIONS • SIDING  
 DECKING • WINDOW/DOOR REPLACEMENT  
 GARAGE DOORS • CONCRETE  
 NO JOB IS TOO SMALL!!!

Call today for a FREE ESTIMATE.

**Tree & Stump Removal**  
**FREE ESTIMATES**

Traci Davis 605-759-7880  
 Mike Davis 507-227-7068

**Oehlerts & Son Construction**  
 30 Years Experience  
 Kevin Oehlerts, Luverne,  
 www.OehlertsAndSonConstruction.com  
 507-673-2206  
 Lic. # BC064924

**LUVERNE HEALTH & WELLNESS**  
 Codie Zeutenhorst, D.C., CAC

Acupuncture • Chiropractic Care  
 Family Care • Sports Injuries  
 Kinesiotape • Auto & Work Injuries  
 Acupuncture and Massage Available  
 Kris Van Der Brink M.T. & Amy Rosales M.T.

507.449.4400 www.luvernechiro.com  
 109 S. Freeman Ave. | Luverne, MN

# DINING & ENTERTAINMENT



Bring in your current policy for a comparison today!



South Hwy. 75, Luverne, MN  
507-283-8383 or 1-800-258-4471  
E-mail: info@cattnach.com  
Website: www.cattnach.com



**Howling Dog is NOW OPEN**  
on Sundays at 11 am  
Hours will be determined



Every Friday Night Pool Tournaments 7 pm

Bean Bag Tournament Sunday, Jan. 22 Start Time 1 PM

507-449-0454 **JOIN US**

**THE EAGLES CLUB**  
Call the Club Manager at 283-9661 if you're interested in booking the Eagles Club for wedding receptions, class reunions, parties, etc.

312 W. Harrison, Luverne • Phone 283-9661 • Lic #00258

**THURSDAY NIGHTS**  
14 28 45 50 61  
**BINGO**  
6:30 pm 45 50 61  
32 47 69  
11 19 FREE 55 63  
5 16 39 48 72

**SATURDAY, JANUARY 14**  
6-9 PM Eagles Steak Fry

- Steak & Shrimp Combo \$19
- Shrimp \$17
- 12oz Steak \$18

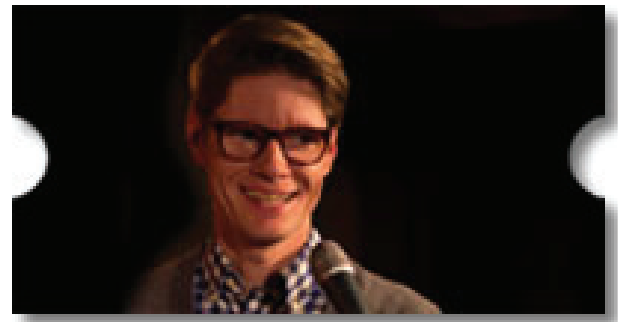
**Honolulu**  
From \$1,270 per person  
5 nights hotel  
Round trip air from Sioux Falls  
Round trip transfers  
Select April - May Dates  
Pricing based on 2 adults  
Pricing based on availability  
Call for more details!

**Princess Cruises Anniversary Sale**  
Get up to \$600 FREE Onboard Spending Money & Free Specialty Dining  
Valid on select sailings Summer 2017 - Spring 2018  
Offer ends February 28, 2017  
Call for more details!

**ALL ABOUT TRAVEL INC.**  
9-Year Winner! Layaway & Gift Certificates Available!  
605-339-8911 • 1-800-390-6610  
3801 S. Western Ave., Suite 103, Sioux Falls, SD  
Open: Mon.-Fri. 8 a.m. - 7 p.m. • Saturday 9 a.m. - 3 p.m.  
www.AllAboutTravel.org www.facebook.com/AllAboutTravelInc  
Helping You Find Your Personal Paradise!

**Rock County Pork Producers**  
Annual Banquet January 16  
Registration at 6:30 pm  
Meal at 7:00 pm  
Entertainment at 8:00 pm  
Grand Prairie Events  
Tickets \$15 at the door

**TOMMY RYMAN**  
Tommy Ryman grew up with a new-age, folksinging mother and a traditional, Lutheran insurance-agent father. This XY equation evidently equals: acclaimed comedian. Ryman has earned the title of Semifinalist on NBC's Last Comic Standing. Roseanne Barr, a professed fan, raves she has "... never seen anything like [Tommy] before in [her] whole life, [he is] one-of-a-kind, fantastic!"  
Ryman's act can be described as absurdist and clever, masked behind a very likable and innocent demeanor, often thought of as disturbingly adorable. He is a favorite among audiences at top clubs, colleges, and companies around the nation, and he is regularly featured on Rooftop Comedy, SiriusXM, and iheartradio.  
Ryman recently won the title of Best in the Midwest at the prestigious Gilda's Laugh Fest. He was invited to perform at the Great American Comedy Festival at the Johnny Carson Theater, and was featured as one of the "Twin Cities' Funniest People" by Metro Magazine. Ryman has two albums on StandUp! Records. Ryman's unique humorous storytelling and comedy stylings should not be missed.



**PUBLIC WELCOME!**

**Tailgate Supper**

Fairmont Cardinals vs Luverne Cardinals  
Red Rock Central Falcons vs Hills/Beaver Creek Patriots

Blue Mound Ice Arena January 10  
Serving at 5:30 p.m. until gone

Hills/Beaver Creek Gym January 13  
Serving at 5:30 p.m. until gone

**FREE Burgers, Rib Ticklers, Corn Chips and Milk**

Complimentary Meal provided by:  
• Rock County Corn & Soybean Growers  
• Rock County Pork Producers  
• Rock County Dairy Producers  
• Rock / Nobles Cattlemen  
• Rock County Farm Bureau

Brought to you by the Rock County Corn and Soybean Growers and their checkoffs

Minnesota Soybean Research & Promotion Council  
Minnesota Corn Growers Association


PRESENTED BY THE  
**PIPESTONE PERFORMING ARTS CENTER**

**Bernie King & The Guilty Pleasures**

**SUNDAY, JAN. 15**  
PIPESTONE PERFORMING ARTS CENTER  
SHOW STARTS AT 2:00 PM  
CALL 507-825-2020 TO RESERVE YOUR SEATS!  
Adults \$15 • Students \$5  
Family \$35 • All Seats Reserved

**Read Recycle Reuse**  
Please recycle your newsprint when finished with the paper.

Your source for daily news  
**Star-Herald.com**



**THE CITY OF LUVERNE STREET DEPARTMENT REMINDS YOU THAT:**

*If it's snowing when you go to bed...  
If snow is in the forecast...  
If you're planning to be out of town...*

**REMEMBER TO MOVE YOUR VEHICLES OFF THE STREET UNTIL THE PLOW HAS GONE BY CURB TO CURB**



**D. & G. Drinking Water Systems**

Water made by reverse osmosis process  
Rentals • Sales • Service

610 West Hatting • Luverne, MN  
507-283-4630 • Darin Smeins  
Lic. # WM068242

**New Prairie Insulation, Inc.**  
Serving Residences & Contractors  
**FREE ESTIMATES**  
---Insulation---

Arnold Brondsema  
Beaver Creek, MN  
507-673-2548 or  
1-800-232-7089

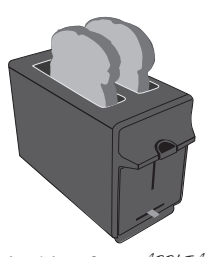


Take time out of your day to have a quiet time with God



**DIAL-A-DEVOTION**  
**283-4005**

an outreach ministry of St. John Lutheran Church



I'm looking for *APPLIANCES*

**Luverne ANNOUNCER CLASSIFIEDS**

**RED ROCK TOWNSHIP NOTICE**

Notice is hereby given that any township citizen wishing to run for a township office in Red Rock Township, Minnehaha County, South Dakota, must submit a petition for the office they wish to run for. At the annual meeting on March 7, 2017 voters will elect one supervisor, one treasurer and one clerk. Petitions are available from the township clerk and must be received by the clerk on or before February 10, 2017.

**James Andersen, Clerk**  
Red Rock Township  
25913 485th Ave.  
Valley Springs, SD 57068  
605-582-3856

**Great New Year Deals**



**2016 Ford F-150**  
\$55,368 after discount & rebates **SALE** \$46,766

3.5L V6 EcoBoost Engine, 6-SPEED AUTOMATIC ELECTRONIC TRANSMISSION W/TOW, 4X4



**2017 Ford Escape SE**  
\$29,670 after discount & rebates **SALE** \$24,890

1.5L EcoBoost Engine, 6-SPEED AUTOMATIC TRANSMISSION WITH SELECTSHIFT, FWD

**Herman** LUVERNE, MN Since 1932 **Ford**

624 Kniss Ave Luverne, MN  
hermanmotor.com

**Southwest HEARING TECHNOLOGIES INCORPORATED**

907 McMillan St. PO Box 275  
Worthington, MN 56187  
507-376-4407 Fax: 507-376-6663

**Call us for a service location near you!**  
**1-800-545-4407**

**Thursday, January 12**  
**Poplar Creek**  
**201 Oak Dr.**  
**8 a.m.**

**We are here to serve you!**  
**2nd Thursday of odd months**



*Nicholas Raymo*  
Hearing Instrument Specialist (H.I.S.)

•Evaluation •Sales •Services •Repair

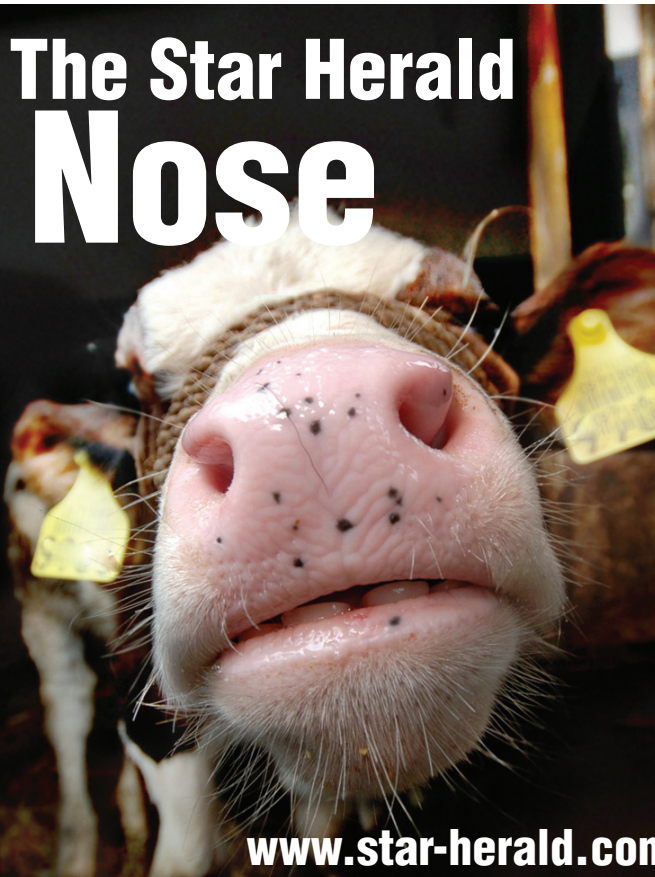
**2017'S MULES ARE HERE**

**2017 ATVS & UTVS ARE HERE**



**Luverne Kawasaki**  
Let the Good Times Roll™  
101 W. Maple, Luverne, MN 56156  
507-283-1800


**The Star Herald Nose**



[www.star-herald.com](http://www.star-herald.com)

**Hills-Beaver Creek Public Schools**  
**I.S.D. #671**  
**Open Enrollment Deadline: January 15th**

January 15th is the deadline for nonresident students to apply for open enrollment to the Elementary School in Beaver Creek, District Office or online at [www.hbc Patriots.com](http://www.hbc Patriots.com). Open enrollment forms may be picked up in the district office of the Hills-Beaver Creek Public Schools from 8 a.m. - 4 p.m., Monday through Friday.



**WHAT WE'RE ABOUT...**

- A strong tradition and commitment to academic excellence
- Educational programs for all ages
- Clear rules and a positive climate for learning
- Strong parent and community commitment to school
- Nonviolent environment with safe, caring atmosphere
- Learning enhanced by a low ratio of student to teachers
- Staff maintain an inclusive environment to meet needs of individual students
- Staff know students as individuals and are determined to help students succeed.

*Hills-Beaver Creek School provides a student-centered environment that encourages individual talents and differences.*

**Papik MOTORS**  
1-90 Luverne, MN

**283-9171 | PAPIK.COM**

**CHEVROLET GMC CHRYSLER DODGE Jeep RAM**

**2009 Chevrolet Impala**  
Stock #300308N  
144K



**Papik Price \$5,990**

**2010 Buick Enclave**  
Stock #229833U  
152K



**Papik Price \$9,990**

**2011 Chevrolet Equinox**  
Stock #284639U  
105K



**Papik Price \$11,990**


**2012 GMC Terrain**  
Stock #123611N  
95K



**Papik Price \$14,990**

**Cab•in fe•ver /n./**  
- An idiomatic term for a claustrophobic reaction that takes place when a person is snowed in with nothing to do for an extended period. Symptoms include feelings of disconnection, restlessness, irritability, irrational frustration with everyday objects, excessive sleeping, and an urge to go outside even in blizzard conditions or darkness.

**Get your cure at Star-Herald.com**



**recycle. reduce. reuse.**





**DeBoer**  
EDGERTON  
507-442-4341



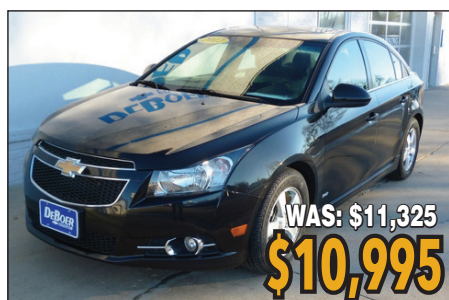
2016 CHEVROLET MALIBU  
LT, 8K #1758A

WAS: \$25,985  
**\$24,450**



2016 CHEVROLET SILVERADO 1500  
LTZ, 22K #1761A

WAS: \$45,125  
**\$43,995**



2012 CHEVROLET CRUZE  
LT, W-1LT, 46K #A1643A

WAS: \$11,325  
**\$10,995**



2013 CHEVROLET EQUINOX  
LT, AWD, ONE OWNER, 54K #1750A

WAS: \$18,100  
**\$17,985**



2007 CHEVROLET SUBURBAN  
LT3, BOSE, DVD, 143K #P1613A

**\$17,450**



2014 CHEVROLET SILVERADO 1500  
LT, Z71, ALUM WHEELS, 83K #1757A

WAS: \$30,285  
**\$26,985**

GM **Certified** USED VEHICLES CHEVROLET SILVERADO **AutoCheck** [www.deboerchev.com](http://www.deboerchev.com)



**Dave Hup**  
Realtor/Owner  
507-920-5910  
dave.landandhome@gmail.com

**Billy Cowell**  
Realtor/Owner  
605-254-5450  
billy.landandhome@gmail.com

For all our listings visit  
[LuverneLandandHome.com](http://LuverneLandandHome.com)



**RE/MAX Land and Home**  
507-449-6111

117 East Main Street • Luverne, MN  
Each Office Independently Owned and Operated

**NEW LISTING**

**1310 Northview, Luverne**



**\$169,900**

Two bedroom, two bath,  
main floor laundry &  
wheelchair friendly.  
Great starter home or  
perfect for a retired  
couple!

[www.Star-Herald.com](http://www.Star-Herald.com)

# Star-Herald.com

Get your Star Herald news anywhere, anytime.



## Online Edition you get:

- Access to articles before they appear in print.
- Access to our new eEdition
- All information from our print edition. *(Plus some extra online-only content)*
- News and information updated daily.
- Videos, photo galleries and columns from the Star Herald Staff.

Get the Star Herald Online  
12 months **\$44**

Print Edition Only  
In County: 12 months **\$72**

Online + Print Edition  
In County: 12 months **\$85**

Rock County  
**STAR HERALD**

[www.star-herald.com](http://www.star-herald.com) • **507-283-2333**