



Rock County STAR HERALD

Rock County's oldest business, printing since 1873

Thursday, December 28, 2017

Luverne Council increases levy 5.73 percent for 2018

By Lori Sorenson

Luverne City Council members approved the 2018 tax levy at \$1,815,828, which is a 5.73-percent increase (\$98,435) over the current levy.

The effect of the levy increase on local taxpayers, however, will likely be minimal, thanks to Luverne's increasing tax base.

"Our rising tax base does help to keep property taxes our citizens pay fairly level," City Administrator John Call said at the Dec. 12 City Council meeting.

Luverne's highest property taxpayer, Gevo, is valued at \$12 million and contributes \$400,000 per year in property taxes.

A home in Luverne valued at \$500,000 generates roughly \$5,900 per year in property taxes for the city.

No one showed up for the Dec. 12 public hearing on Truth in Taxation, and the regular council meeting convened after Call presented basic budget information affecting the levy.

For example, the Governmental Budget is \$7,282,881. General Fund budgeted expenditures for 2018 are \$4,405,325. Local Government Aid revenue is expected to be \$1,422,199.

Luverne continues to have the lowest tax rate when compared to other county seat cities in southwest Minnesota.

For an average \$100,000 home in Luverne, property taxes are roughly \$900 per year. That compares to a \$100,000 home in St. James, for example, that is taxed \$1,600 per year.

"We can thank our friends in school and county government for their prudent fiscal decisions that help to keep our overall property taxes low," Call said.

Reserves

The council approved the unassigned fund balance at a minimum of 35 to 50 percent of General Fund operating revenues for minimum cash flow purposes.

The council also set other fund balances, such as 75 percent of accumulated depreciation for Enterprise funds, \$250,000 for Property Casualty, and \$150,000 for the Workers Compensation fund.

Utility rates and fees

The council sets fees, rates and charges to increase 5.7 percent for the upcoming 2018 fiscal year.

The rates are adjusted in order to finance maintenance, operation and necessary improvements for water, sewer, electric and building and zoning departments, including various business licenses and fees.

The rates help to fund and meet operating expenses of the utilities, and rate studies are done every three years by an outside consultant to set rates at an adequate level.



Year at a glance

Construction workers at the sites of Top Notch Car Wash (foreground) and Rock County Implement on South Highway 75 in Luverne were hard at work Wednesday morning, Dec. 20. The projects also mark the start of several years of construction within Luverne.

2017 was a good year

Here's what you need to know if you haven't been paying attention this year

By Lori Sorenson

The top Star Herald news of 2017 can arguably be described in one word: growth.

Tremendous. Enormous. Dizzying. Growth.

"Phenomenal" was the word Luverne Mayor Pat Baustian used. "We're at the precipice of a lot of new construction," he said.

Nearly \$160 million worth of development is planned in the next three years alone, and that doesn't include projects yet to be announced.

By comparison, average local building activity over the past five years has been \$12 million per year.

Tru Shrimp to make economic history in Luverne

The clear shining star among 2017 headlines was the announcement that Luverne will be home to tru Shrimp's first harbor and hatchery as it develops its new industry in Minnesota.

The \$88.5 million Luverne Bay Harbor and accompanying water treatment facility were announced in June.

And in November, the company announced it would also locate a shrimp hatchery on the 60-acre site along I-90 west of Luverne.

The combination of all three tru Shrimp projects adds up to \$100 million in new construction and 100 new jobs in Luverne.

"Luverne is about to experience the largest economic development opportunity in its history," Baustian said after the hatchery announcement.

The property is currently a corn stubble field, but the city is committed to \$11 million in roads and infrastructure work.

This includes transportation and util-

ties access in that area of the Industrial Park — not just for tru Shrimp but for all planned development.

The company will break ground in spring of 2018. It's estimated the Luverne facility will produce 20,000 pounds of shrimp per day of various sizes (42 percent jumbo size).

That's more than 50 percent of the nation's current aquaculture shrimp production.

Towne Square retail and housing on South Highway 75

All these jobs will mean workers will need places to live.

One of the exciting announcements in 2017 is the mixed-use development that will be known as Towne Square. The project will bring retail, office space, restaurants and apartments together on the 4-acre lot previously occupied by Sharkee's (which closed)

Year in Review, continued on Page 2A



Minnesota National Guard Adjutant General Richard Nash (center) traveled to Luverne in October to announce the proposed new readiness center. Below: An artist's rendering of the tru Shrimp Luverne Bay Harbor to be located in southwest Luverne.



'12 Days of Pizza' brings relief to local food-insecure families during holiday break

By Mavis Fodness

A dozen Luverne School District families will have a merrier Christmas, thanks to a thoughtful film producer, a local sponsor and the Luverne Pizza Ranch.

The "12 Days of Pizza" helps local food-insecure families have a happier holiday break through a partnering of local businesses.

Four months ago Luverne Pizza Ranch owner Lila Bauer learned of the idea through the franchise advisory council that had to come up with a company-wide idea that positively

touched a community.

It stemmed from South Dakota filmmaker Sean Covell's video about giving 12 free pizzas to 12 local families each day during the 12-day Christmas break.

"Oh my gosh, it's so cool," Bauer said of the film. "It gives you goose bumps watching it."

Covell had visited an elementary school near his hometown in the Black Hills in December two years ago and asked the 25 students if they were excited about the upcoming 12-day break from school.

Not all the students were happy about the break, and their teacher later explained to him that half the students in the class would miss the school-provided meals and the weekend Backpack program that help stretch the households' food budgets.

In response, Covell developed the "12 Days of Pizza" program with the Rapid City Pizza Ranch and the Black Hills Community Bank in 2015 to help end hunger for 12 local families.

The following year, three additional partnerships with other Pizza

Ranch franchises and local sponsors developed, resulting in 48 families being helped through the holidays.

This week, more than 60 Pizza Ranch restaurants in seven states will provide roughly 1,200 families with more than 14,000 meals including 12 families in the Luverne School District.

On Wednesday, Dec. 20, Bauer and representatives from the sponsoring Farmers and Merchants Bank of Luverne presented the 144 free pizza (or chicken meal) certificates to selected Luverne students.

"We felt there was a need," said branch manager Ryan Wynia. "This looks like a fantastic program ... to help families during the holidays."

Included with the 12 certificates is a DVD copy of Covell's movie, "The 12 Dogs of Christmas."

A committee selected all the recipient students.

The unexpected certificates are intended to bring smiles to the local students' faces through an enjoyable family activity.

"If you want to eat something fun, you get pizza," Bauer said.

Volume 142, Number 52

Luverne, MN 56156
USPS 468-040



The Star Herald is Rock County's oldest business, documenting the news of its citizens since 1873



Article 52: Star Herald shares final piece of its yearlong series of Luverne's 150 years

This is the final installment in a 52-week series that shares the rich history of Luverne as it celebrates 150 years. This week is a piece from the Star Herald archives in 1967 about one day in a celebration of what was then Luverne's 100-year anniversary.

"We look back in order to see where we have been — to give proper credit to those who have gone before," declared the Reverend Donald Connelly, speaking at the Luverne Centennial "Sermon on the Mounds" in July 1967.

Luverne celebrates 150 years — Sermon on the Mounds/see page 6A

This week's moment in time is sponsored by:



COMMUNITY CALENDAR

Meetings

Rock County Township Association will meet at 1:30 p.m. Thursday, Dec. 28, in the Rock County Library basement meeting room.

American Legion Auxiliary #123 will meet at 10 a.m. Wednesday, Jan. 3, at the home of Dianna Tomlinson. Call 283-1934 with questions.

Meditation and Mindfulness Practice meets at 7 p.m. the second and fourth Wednesdays of the month in Hilger Commons at 215 N. Cedar Street in Luverne. For more information call Kim at 507-353-0041 or email kimberlyelizabeth@live.com.

Narcotics Anonymous will meet every Thursday evening at 6:30 p.m. at the Steen Reformed Church. Contact Robert for more information 507-329-2642.

Women's Alcoholics Anonymous meets at 8 p.m. Mondays in the United Methodist Church.

Narcotics Anonymous meets at 7 p.m. Fridays and for basic text study at 7:30 p.m. Tuesdays in the basement of St. Catherine Catholic Rectory, 203 E. Brown St., Luverne. Use east door. For more information call 507-220-0137.

Alcoholics Anonymous meets at 8 p.m. Wednesdays and Saturdays in the United Methodist Church, Luverne. Call 605-321-4324.

Alcoholics Anonymous meets from 8 to 9 p.m. every Tuesday in Runals Memorial Hall, Edgerton. Call Naomi, 507-215-2956.

Hardwick Goal Seekers meet every Monday in Hardwick City Hall for the purpose of support and encouragement for weight loss journeys. Weigh-in begins at 6 p.m., and the meeting starts at 6:30 p.m. Call Glenda, 449-0568, with questions.

Community Transit closed New Year's

Community Transit buses (former Heartland Express) normally run from 7:30 a.m. to 4:30 p.m. Monday through Friday, but the service is closed New Year's Day. Call 283-5088 with questions.

Kick off the New Year with park hike

The Blue Mounds State Park is hosting a family-friendly hike from 1-2 p.m. New Year's Day. Meet at the picnic grounds parking lot for a walk through the winter wonderland of the prairie. The 1-mile hike will take approximately one hour and will require hiking through snow that may be uneven or not compacted. Wear warm clothing and sturdy snowboots. Snowpants are recommended.

Cancellation notice will be posted on the park website, www.dnr.state.mn.us/state_parks/blue_mounds

Try out for Green Earth play Jan. 7-8

Auditions are set for the next Green Earth Players production, "KOLD Radio — Whitefish Bay," a comedy by Phil Olson.

Try-outs for the cast of five men, four women, and one teenage girl are set for 2-4 p.m. Sunday, Jan. 7, and 5-7 p.m. Monday, Jan. 8, at the GEP building at 401 Edgehill Street in Luverne.

Performances are set for March 16-18 and 22-25.

'Sister Act' bus trip to Chanhassen

Luverne Community Education is offering a bus trip to Chanhassen Dinner Theater on Saturday, Feb. 10, to see "Sister Act."

Call Community Ed at 507-283-4724 by Jan. 10 to reserve a spot. Cost is \$110 for the busride and event.

Park hosts candlelight hike Jan. 13

The Blue Mounds State Park staff invites the public to participate in a candlelight hike from 6-7 p.m. Saturday, Jan. 13. The hike is a self-guided, self-paced 2-mile trail. Meet at the warming shelter for warm beverages and a fire. Weather conditions are variable, so bring warm winter clothes and sturdy boots.

Public invited to Jan. 25 workshop on social media dangers

Nationally known author Alison Feigh of the Jacob Wetterling Resource Center will present "Forensic Aspects of Online and Social Media Usage" at Grand Prairie Events from 9 a.m. to 4 p.m. Thursday, Jan. 25.

Goal of the training session is to help participants understand why youth are susceptible to online and social media dangers and how to reduce their risk. Cost of the workshop is \$50 and includes lunch. Continuing education credits are available. The event is partially funded with a grant from the Luverne Area Community Foundation.



Lori Sorenson photos/1228 firemen rappelling training



Higher education

Luverne Fire Department members conducted a training exercise Tuesday night, Dec. 19, in the lobby of the Blue Mound Tower apartment building. Seven firefighters refreshed their skills and learned new skills in rappelling from high places. The top balcony is 70 feet from ground level and the firemen used the height — and indoor weather conditions — to train from high places.

At left: Travis Franken (left) helps Tyson Facile prepare for his drop over the balcony. **Above:** Facile flashes a smile as he successfully completes his turn on the ropes. **At right:** Jeremy Lehman (left) takes off his gear after safely reaching ground level. He's pictured with Tyler LeBrun (center) and Facile.



Year in Review: Broadband installed/continued from Page 1A

and Mert's Repair (which moved to the industrial park).

Four or five business tenants will occupy the primary ground level spaces, with drive-through options on each end.

The primary building along Highway 75 on the north end of the property will be 6,000 square feet and three stories tall. The other highway-facing property will have 8,000 square feet and will also be three stories high.

The two residential buildings along Hatting Street will each have 4,000 square feet and will be two levels, and construction will start this spring on the apartments first to meet immediate housing needs.

Where will everyone live?

Meanwhile, city officials are paving the way for other housing developments.

In July the city purchased seven acres north of Rock County Opportunities for \$133,500 and designated it for housing development.

It's adjacent to 18 acres to the north that the city purchased in September 2016 from the Ed and Julie Mueller estate for \$155,000.

This piece is next to the 6.59-acre stretch along Poplar Creek in the Hawkinson Park area that the city bought in 2015 from the late Burdell

Kruse for \$80,000.

With these combined parcels, the city owns more than 30 contiguous acres from West Main Street up to Dodge Street.

Some of that ground will be used for Phase 2 Loop development along Poplar Creek, but the rest will be designated for economic development, specifically housing.

Meanwhile, the city continues to explore other avenues for housing opportunities. For example, the grassy area east of the pool was rezoned from commercial to residential to allow for twin homes to be built along the inside circle of Roundwind Drive in the future.

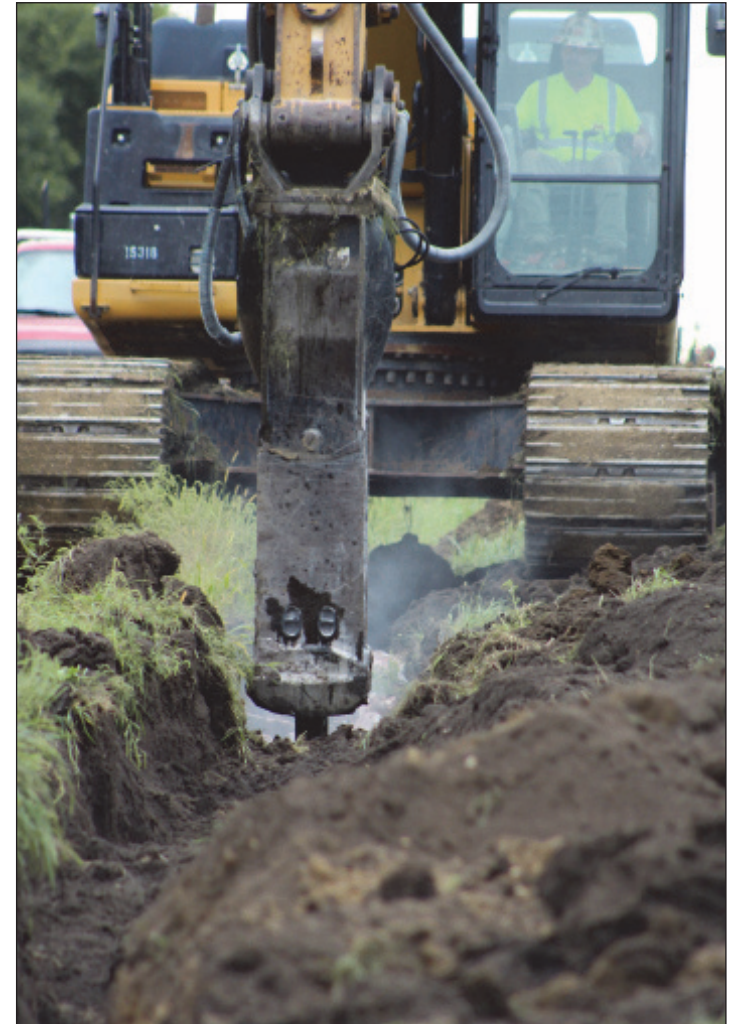
Broadband connects rural homes to World Wide Web

For those who have long had adequate Internet access, it may not be a big deal that fiber-to-the-home broadband access has reached rural Rock County.

But for many of the thousands of rural residents who have been without high-speed Internet, this was the biggest story of 2017. In fact, rural broadband is often compared to rural electricity and phone service, in terms of far-reaching economic impact.

All of the underground

Year in Review, on Page 3A



The Rock County Broadband Project connected more than 1,100 residents to high-speed internet through a 531-mile network of fiber. The \$14 million project included an investment of \$5 million from the state of Minnesota, \$8 million from Alliance Communications in Garretson, South Dakota, and \$1 million from Rock County.



Dial-A-Specialist

Your One Stop Guide to Local Businesses

 <p>ROCK COUNTY CHIROPRACTIC • Men, Women & Children's Health • Custom Orthotics • Kinesiotape • Athletic Care • Massage Therapy • Work & Auto Injuries • Postural Restoration WWW.ROCKCOUNTYCHIROPRACTIC.COM 283-2561 • 103 E. MAIN, LUVERNE Monday 7:30 a.m. - 6 p.m. • Tuesday 7:30 a.m. - 3 p.m. Wednesday 7:30 a.m. - 6 p.m. • Thursday 7:30 a.m. - 1 p.m. Friday 7:30 a.m. - 5 p.m.</p> <p>• Chiropractic</p>	 <p>STAR HERALD Luverne ANNOUNCER Chantel Connell Sales Representative 117 W. Main, Luverne, MN 507-283-2333</p>  <p>Rick Peterson General Manager</p> <p>• Advertising</p>	<p>LUVERNE HEALTH & WELLNESS Codie Zeutenhorst, D.C., CAC ✓ Acupuncture ✓ Chiropractic Care ✓ Family Care ✓ Sports Injuries ✓ Kinesiotape ✓ Auto & Work Injuries Acupuncture and Massage Available Kris Van Der Brink M.T. & Amy Rosales M.T. 507.449.4400 www.luvernechiro.com 109 S. Freeman Ave. Luverne, MN</p> <p>• Chiropractic</p>	<p>COMRAY COMPUTERS Computer Repair and System Builder</p> <p>Ray Hansen 1726 140th Ave., Luverne, MN 56156 507-669-2621 comraycom@gmail.com</p> <p>• Computer</p>
 <p>Rock County EYE CLINIC 507-283-2345 104 N. Freeman Ave. Luverne, Minnesota</p> <p>• Eye</p>	 <p>Papik MOTORS 1-90 Luverne, MN Box 536 • 801 West Commerce Road Luverne, MN 56156 (507) 283-9171 (800) 634-7701 www.papik.com</p> <p>• Automotive</p>	<p>Luverne MINNESOTA City Offices Love the life! PO Box 659, Luverne, MN 56156 507-449-2388 (24 hour voice mail) www.cityofluverne.org</p> <p>• City</p>	<p>Dakota Land Surveying and Engineering, Inc.</p>  <p>Steven B. Kor Professional Engineer Registered Land Surveyor</p> <p>2000 W. 42nd Street, Suite B-6 Sioux Falls, SD 57105 605-334-4882 605-334-5745 Fax</p> <p>506 Almar Luverne, MN 56156 507-283-3803 steve.dis@midconetwork.com</p> <p>• Land Surveying</p>

Third-graders' ornament-making goes more smoothly with an extra hand



Dawn Nath (left) helps grandson Dylan Hoff.



Matthew Gangestad shows the holiday tree ornament he completed with his mom, Stacy (not pictured).



Missy Cowell steadies daughter Hannah's assembled ornament as the third-grader punches a hole in one of the joints.



Mavis Fodness photos/1228 Ornament Making

During the last day of classes in 2017 on Friday, Dec. 22, third-graders at Luverne Elementary constructed ornaments out of paper. Family members joined students in Pam Christensen's classroom to provide a hand in assembling the globe out of small paper circles during the hourlong event which is an annual tradition. **Above:** Daemon Olson carefully spreads glue on his folded paper edges of his soon-to-be ornament with his dad, Dan Meinerts.

Year in Review: Landmark year/continued from Page 2A

fiber was in place last year, and now rural residents are connected and using the service — many of them finally enjoying the social and economic benefits they've been missing out on.

Voters approve \$31 million school referendum

One of the biggest headlines of 2017 didn't hit the Star Herald pages until later in the year when Luverne School District passed a voter referendum for capital improvements and expansions.

The ballot asked voters two separate questions. The first asked for \$24 million to improve the 1950s-era high school buildings and update handicap-accessibility and safety deficiencies.

Three new elementary classrooms will address space and technology needs, and new middle school-high school spaces will meet needs for technology, labs and music instruction and physical education.

A main floor middle school-high school commons area will move the cafeteria from the basement, which will be converted for sports programs.

The second question, which also passed by a comfortable margin, asked for \$7 million to build a new performing arts center.

The almost 800-seat facility doubles the capacity of the current auditorium and would be used for performances by all grade levels.

Construction will start in August of 2018, making this a major story to follow next year.

National Guard Armory coming to Luverne

Adding to Luverne's construction flurry along I-90 will be the \$15.7 million National Guard Armory Preparedness Center slated for construction in 2019.

Plans call for two buildings on 15 acres — a 37,600-square-foot readiness center and a 4,000-square-

foot equipment storage facility with classroom space and simulated training areas.

National Guard officials had been shopping for a town to host the structure that will serve as a consolidated Luverne and Pipestone unit to be built sometime in 2026.

Luverne was put on the fast track for the opportunity, however, after investor Warren Herreid II offered a \$5 million donation to have the facility in Luverne.

Looking good

Amid development news and major construction, 2017 continued on a path of aesthetic improvement in Luverne's primary corridors.

Just in time for its 150th anniversary party, Luverne wrapped up its \$122,000 Four Corners landscaping at the intersection of Highway 75 and Main Street.

The flag park on the southeast corner was completed late in 2015; the northeast corner and its lighted sign at the W-2 Quality Meats corner wrapped up last fall.

The northwest corner in the Laundry Room parking lot and boulevards was completed this year with the "four corners" theme of red brick, Sioux quartzite boulders and grass and shrubs.

The four corners facelift is part of a citywide goal to update its brand and improve urban landscape design.

For example, \$124,000 has been spent on urban landscaping at The Lake and \$115,000 at Rotary Park, plus boulevard improvements and signage around town.

Community Consultant Roger Brooks, who "secret shopped" Luverne in June, said he was impressed by the city's efforts.

"Yours are some of the best gateways I've seen in the country," Brooks said. "It probably wasn't cheap, but it creates a good first impression of Luverne."

Luverne reaches



Two Rock County communities celebrated milestones in 2017 including Hardwick who recognized its 125th birthday and Luverne who conducted a yearlong series of events.

150th landmark year

There have been plenty of reasons to celebrate Luverne's 150th anniversary, which peppered headlines from week to week in the 2017 Star Herald pages.

Careful thought and planning went into the big party that coincided with Luverne's popular hot dog night event on July 13.

The celebration included a parade, a party at The Lake, live music at several different venues and many other special events.

The Star Herald published a small book about the celebration and about highlights from Luverne's 150 years.

It was widely distributed free of charge throughout the community and copies can still be picked up at the Star Herald office, the Chamber and other locations around town.

The Hardwick community also celebrated 125 years this year, as did Zion Lutheran Church in Hardwick.

St. John Lutheran Church in Luverne marked its 125th

anniversary with a yearlong celebration.

Governor's Opener to be in Luverne in 2018

In an announcement that will be a bigger story in 2018, the Minnesota DNR and Minnesota Governor's office named Luverne as next year's host community for the Governor's Pheasant Hunting Opener.

The announcement is exciting for outdoor enthusiasts, but it also means nearly 150 members of media and government are expected to attend and hunt, which translates into roughly \$1 million worth of publicity for the town.

New challenges in 2017

Not all news was merry and bright in Rock County this year.

Year in Review, on Page 8A

FSA loan payments due Monday; assistance available for hardships

By Fraser Norton
County Executive Director

Important Dates

Jan. 1: FSA office closed for New Year's Day.

Jan. 2: 2018 NAP Honey Acreage certification deadline.

Jan. 15: FSA office closed for Martin Luther King Day.

Jan. 16: 2018 NAP Apple Acreage certification deadline.

Jan. 31: 2017 Wool Loan and LDP request deadline.

Feb. 1: 2018 NAP Maple Sap sales deadline.

Feb. 19: FSA office closed for Presidents Day.

Ongoing: Continuous CRP sign-up.

Financial hardship and loan servicing

Many farm loan borrowers have payments due on Jan. 1, 2018. The Farm Service Agency (FSA) expects and encourages prompt payment. However, for borrowers who cannot make their payments due to adversity such as a natural disaster or production difficulties beyond their control, FSA is committed to providing our farm loan borrowers with the tools necessary to be successful. Part of ensuring this success is providing guidance and counsel from loan or loan servicing application, through the

term of your loan, and after. In order for the FSA to help, you must alert the FSA Office of any of the following:

- Any proposed or significant changes in the farming operation.
- Any significant changes to family income or expenses.
- The development of problem situations.
- Any losses or proposed significant changes in security.

There are options for FSA loan customers during financial stress. If you are a borrower who is unable to make payments on a loan, contact the Rock County FSA Office to learn about the options available to you.

If past due on payments, FSA will notify you of your options with a "Notice of Availability of Loan Servicing." Please pay special attention to this notice as it provides you with your options for FSA servicing programs and outlines specific deadlines that you must meet. Failure to meet these statutory deadlines may significantly limit your options and FSA's ability to help address your farm's financial difficulties.

For more information on FSA farm loan programs, visit www.fsa.usda.gov. Please contact the Rock County FSA Office if you have any questions or would like to schedule an appointment to meet with the loan staff to discuss your options.

Call 507-283-2369, ext. 2, or stop by the Rock County FSA Office at 500 W. Gabrielson Road in Luverne.

Order reprints of Star Herald news or sports photos
They make great gifts!

Luverne
Love the life!

HAVE A GREEN CHRISTMAS

ADDITIONAL RECYCLING PICKUP

FOR THE ENTIRE CITY

FRIDAY, DECEMBER 29

GIFT WRAP IS NOT RECYCLABLE.

HAPPY HOLIDAYS!

~The City of Luverne

WRAPPING PAPER & GIFT BAGS

belong in your TRASH CAN

NOT RECYCLABLE

Luverne
Love the life!

Rock County LAND MANAGEMENT

The City of Luverne & RC Land Management wishes you a Green Christmas

After 40-pound weight gain New Year's resolution goes public

With Christmas in the rear-view mirror, it's time for that wonderful annual event "making New Year's resolutions that we have no intention of keeping — ever."



THE NORTHVIEW

By Brenda Winter, Columnist

*Join the
Luverne
Whole30
January 2018
Facebook group
and let's
support
each other ...*

This year for greater accountability, I am going public with my resolution. I am launching a citywide one-month healthy eating campaign. On Facebook it's called Luverne Whole30 January 2018.

When I was diagnosed with cancer in the spring of 2014, my first plan of attack was "healthy eating." I actually lost 40 pounds by eating mostly vegetables. I weighed less than I did when I graduated from high school. But after completing chemo and radiation in the spring of 2015, I lost the motivation I had to eat well. Good-bye, broccoli salad. Hello, Dairy Queen Cappuccino Heath blizzard. Large, please.

That was 40 pounds ago. Yup. It's all back. All 40 pounds. Those darling size 8 and 10 jeans went to Goodwill. I recently bought a pair of elastic-waist jeans that my daughter called "totally nursing home compliant."

Along with the weight gain, my bad eating habits have resulted in a new thing in my life called "insomnia." I can't fall asleep at night. I often twist and turn until well past midnight. My former bedtime was closer to 9:30.

And my feet hurt. Wow, do my feet hurt. When I step out of bed in the morning, I take tiny little baby steps for the first few yards until the pain settles down.

So, in three short years I've gone from a vegetable munching, well-rested, pain-free person to an overweight, sleep-deprived, grumpy old lady with sore feet. It's not good.

But here comes the new year and the Whole30 diet plan, which in a nutshell advises its followers to eat eggs, meat, vegetables and fruit.

Followers of the plan do not eat grains like rice, corn or wheat or legumes like peas or beans. No dairy. No soy. No alcohol, no processed foods and no real or artificial sweeteners.

It's basically a low-carb diet, but there is no program to buy. Just go to Teal's and purchase food from the outside aisles and skip the inside aisles. Order the ribeye at The Bluestem with veggies and a baked potato. Eat the chicken and the green things from the salad bar at the Pizza Ranch. Get the beef jerky instead of the glazed doughnut from Casey's. It's not really that hard.

If you want to sleep better, have less joint pain and maybe lose a pound or two in January, please study the Whole30 plan on the internet. Join the Luverne Whole30 January 2018 Facebook group and let's support each other in this year's New Year's resolution to look better and feel better by eating better food.

Maybe this resolution will last all year?

Star Herald reflects on fruitful year, sees even better 2018

Novelist C.S. Lewis perhaps wrote the best year-end reflection when he penned, "Isn't it funny how day by day nothing changes, but when you look back, everything is different?"

We at the Star Herald have been working on our annual year-in-review story — taking stock of the news to which we've given importance — and reflecting on what these events have meant as we enter a new year.

In a look back on 2017, we won't rehash what we have already reported, but rather we bring the larger stories to life by reflecting on what these individual weekly stories mean as a whole leading into 2018.

We subscribe to the theory that day by day, little seems to change, but measuring change a year at a time seems to highlight progress and sometimes sheds light on room for improvement.

With New Year's Eve upon us, now is the time for reflection.

What have we learned over the

STAR HERALD EDITORIAL

past year?

What are we proud of?

What are we not so proud of?

Are we headed in the right direction as a community?

Does it seem we have good leadership in place?

In the Star Herald newsroom, we share opinions about what we deem "top news stories of 2017" before assembling all these individual happenings in one reflective piece.

None of our year-end lists were exactly the same. Most, however, named similar top events. If we asked our readers to weigh in, we might have entirely different lists. Because, putting it simply, we all respond differently to life events from different

perspectives and worldviews.

We might not hit on everyone's big news or the most joyful, but we've attempted to offer a general compilation of the events and occurrences that brought us together, shaped who we are and now point to where we're headed as a community in 2018.

By our own humble interpretation, 2017 was a pretty banner year, and it appears we have a bright future awaiting us in 2018.

Happy New Year, readers.

We look forward to recording another year in the rich history of our community and its residents. We also look forward to offering another summary of those events at the end of next year.



Wallace thanks those who work with individuals with disabilities

To the Editor:

Mike Burke, president of the Minnesota Organization for Habilitation and Rehabilitation, speaks out on the changing role of people with disabilities in every community in Minnesota. He notes the organization in your community that teaches, guides, and supports those individuals who go beyond our expectations.

I would like to share his column with your readers:

Cutting to the chase, Mike Burke speaks out on the changing role of people with disabilities in every community in Minnesota. He notes the organization in your community that teaches, guides, and supports those individuals who go beyond our expectations.

For those who think people with disabilities should be hidden away somewhere, I have news for you: this group is becoming more integrated in society every day, and we have many people to thank.

There are service provider centers, like Rock County DAC, which assist people with disabilities with

work, training and recreational options. Then there are employers — companies and organizations that give people a chance to prove themselves, whether working in the community or through a center-based option. Our state organization recently recognized a dozen examples as "Outstanding Disability Employers."

There are also staff members, many direct support professionals who pour their heart and soul into making life better for this population. And, most importantly, there are families. Their support, guidance and love simply cannot be replaced.

All of these know that people with disabilities have something to offer to society — skills and talents,

and often a great attitude that rivals some of the best people you know. Still, they don't get much attention, even though they make up between 7 and 8 percent of Minnesotans. As the largest minority group, their rate of unemployment is four to five times that of the general population.

In our service world, we refer to people with disabilities as individuals. That communicates that they deserve dignity, respect and some basic assistance to make their lives better.

Would you join with me and thank an employer, family or service provider today? Every smile and demonstration of gratitude makes a difference!

Sherie Wallace
The Wallace Group
Eagan

VOICE OF OUR READERS

Ask a Trooper explains meaning of traffic sign colors

Question: Are orange signs supposed to be advisory or warning signs? Can you get a ticket for going the speed of the white sign when there is also some orange signs posted? I've seen some construction zones with white and orange signs posted 55mph and then some orange signs with 35mph speed signs. What is the legal speed limit?

Answer: The white speed limit signs are the official regulatory sign. The orange signs serve as a warning; even though they are not regulatory they are intended to provide clear instructions to help you drive safely. So if the posted speed limit is 55 mph, and you see an orange sign indicating 35 mph, I would recommend slowing to the indicated speed.

Minnesota signs, signals, and pavement markings conform to the national standards.

Sign color meanings:

Regulatory:

- Red — Prohibits and commands.
- White — Regulates.

Warning:

- Yellow — Warns.
- Yellow-green — Warns and controls pedestrian and bicycle crossings and school areas.
- Orange — Warns and control in construction zones.

Informational:

- Green — Guides and informs.
- Blue — Describes services for motorists.
- Brown — Indicates historic, cultural, or recreational sites.

You can avoid a ticket — and a crash — if you simply buckle up, drive at safe speeds, pay attention and always drive sober. Help us drive Minnesota Toward Zero Deaths.

If you have any questions concerning traffic-related laws or issues in Minnesota, send your questions to Sgt. Troy Christianson — Minnesota State Patrol at 2900 48th Street NW, Rochester MN 55901-5848. Or at (Troy.Christianson@state.mn.us) Twitter: MSPPIO_SOUTH.

E-mail: editor@star-herald.com Web site: star-herald.com
Phone: 507-283-2333 Fax: 507-283-2335

Published Thursdays by Tollefson Enterprises, POSTMASTER:
Send address changes to 117 West Main, P.O. Box 837, Luverne,
MN 56156. Periodicals postage paid at Luverne, Permit #33 and at
additional mailing offices.

General manager: Rick Peterson
Office manager: Deb Lusty
Circulation manager: Jennifer Kor
Advertising: Chantel Connell
Production manager: Abbe Kolar
Production: Heather Johnson

News staff:
Lori Sorenson, editor
Mavis Fodness, reporter
John Rittenhouse, sports editor
Esther Frakes, copy editor

Rock County
STAR HERALD
Rock County's newspaper since 1873

(ISSN 0889-888X)
SUBSCRIPTION RATES

\$72 per year in Rock County; \$89 per year all other areas. Single copies \$1.25

Entire contents copyrighted by
Tollefson Publishing Roger Tollefson, publisher

The *Star Herald* encourages letters to the editor expressing the opinions of readers and intends to print all letters. Letters not meeting the guidelines will not be printed. The *Star Herald* will verify the authenticity of all letters. Letters must have the name of the writer, a signature and address.

Unsigned letters will not be considered. The *Star Herald* will edit for grammar, spelling and clarity. Any letters containing offensive language, libelous or slanderous material, or misleading or false information will be rewritten before being published. The *Star Herald* will not publish letters written with the sole intent to advertise or serve as a thank-you. Letters with more than 300 words may be edited. The deadline for letters is Monday 10 a.m. They may be delivered or mailed to the editor, *Rock County Star Herald*, P.O. Box 837, 117 W. Main St., Luverne, Minn. 56156.



Ryan Gee photo

Walking in a Winter Wonderland

It was a white Christmas after all when snow blanketed the area during the evening of Thursday, Dec. 22. Ryan Gee shared this image with the Star Herald the following morning of how the Rock County Courthouse Square in Luverne was transformed into a winter wonderland. Days after the measureable snowfall, area residents experienced the season's coldest temperatures of the year when a cold front kept daytime temperatures below zero.

Discussions about the next Farm Bill have already begun

By Kent Thiesse
Farm Management Analyst and Vice President, MinnStar Bank

Both the U.S. Senate and the U.S. House have had several hearings and listening sessions during 2017 regarding the next Farm Bill. The U.S. House is targeting to pass a new Farm Bill by the first few months of 2018, while the U.S. Senate has not yet set any timetables, but has pledged to complete the Farm Bill in 2018.

The current Farm Bill expires on Sept. 30, 2018, so the 2018 crop year will be the final year under the current Farm Bill, unless there is an extension beyond 2018.

The last 5-year Farm Bill was completed in 2013-2014 and commenced with the 2014 crop year. The current Farm Bill was written and enacted during a period of relatively high grain prices, compared to long-term average prices, or in contrast to prices in most years since 2014.

Due to the declining price levels for some commodities, there were substantial ARC-CO payments on some crops in selected areas of the U.S. in recent years. As the ARC-CO program has progressed since 2014, the areas receiving payments and the level of ARC-CO payments has decreased each year, due to lower benchmark prices each year for most crops, as

well as above average crop yields in many areas of the Upper Midwest.

The next Farm Bill will be written during a period of much lower commodity prices, and with the likelihood of very tight profit margins in crop production for the next few years.

Following is a summary of some of the potential programs and provisions being considered for the next Farm Bill:

•Commodity Programs — Most farm operators are just beginning to understand the farm programs in the current Farm Bill that were implemented beginning with the 2014 crop year and will be in place through the 2018 crop year.

There has been lot of concern over the payment calculations in the current county-based Ag Risk Coverage (ARC-CO) farm program option, which over 90 percent of the corn and soybean producers in the Upper Midwest are enrolled in for 2014-2018. The ARC-CO payments for a given crop in a crop year can vary widely from county to county, due to the payment calculation formula.

•Crop Insurance — Many farm operators and ag lenders are concerned about the future of the federal crop insurance program, which is probably the best risk management tool that crop producers have available to them.

The Federal government currently covers approximately 60 percent of the

premium cost paid by farmers for most common levels of crop insurance coverage. Some members of Congress have advocated to reduce the maximum federal premium subsidy to \$40,000 per farm operation and to eliminate the popular harvest price option (HPO) for crop insurance, which is utilized by most Midwest corn and soybean producers. In addition, there have been proposals that would eliminate federal crop insurance coverage to any farm operation that exceeds \$500,000 in adjusted gross income (AGI). If these changes were implemented, it could drastically change the federal crop insurance program as we know it today for many crop producers, which could add more risk to crop production.

•Conservation Programs — The Conservation Reserve Program (CRP), which has been the cornerstone of USDA conservation efforts since the late 1980's, continues to have strong support from ag organizations, as well as from wildlife, conservation and environmental groups. The maximum acreage in the CRP program was reduced to 24 million acres in the 2014 Farm Bill, with 23.4 million acres currently enrolled in CRP, as of Sept. 30, 2017. The CRP enrollment was 29.5 million acres in 2012, and was 33.6 million acres in 2001. Many groups are calling for an increase in CRP acreage up to 28 or 30 million acres in the next Farm Bill.

ON THE RECORD

Dispatch Report

Dec. 16

•Complainant requested an ambulance for her husband who passed out. Subject came to and she refused an ambulance.

•Citizen found a wallet in street at Herman Motors.

•Complainant reported a car parked in lot for two days is blocking a light post due to be worked on today.

•Citizen found phone near Ace Hardware and post office. Brought to Law Enforcement Center.

•Complainant reported vehicle on Davidson Street with no exhaust.

Dec. 17

•Complainant reported suspicious activity on Davidson Street.

•Complainant reported trespassing by previous tenants.

•Complainant reported acts of vandalism on property on Dodge Street.

•Complainant called Law Enforcement Center and requested to speak with a deputy. Deputy spoke with complainant.

•Complainant reported pedestrian crossing lights are not working on Barck Street. Notified city.

•Complainant reported a rain gutter and satellite dish were vandalized on Oakley Street. No suspects or time frame that the vandalism could have taken place.

Dec. 19

Complainant reported subject is harassing staff via phone.

Complainant found a set of vehicle keys on a pink lan-

yard in the city park.

Complainant reported a burglary in Hills. Complainant is unsure of when items were stolen.

Complainant reported two persons messing around in the ditch. Concerned because the stop sign has been shot in the last couple of weeks.

Minnesota Highway Patrol picked up subject on our warrant. Taken to Cottonwood County Jail.

Minnehaha County picked up subject on our warrant. Being held in their jail.

Dec. 20

Complainant reported loud music from vehicle on Oakley Street. Complainant called back and reported vehicle left. Vehicle described as a black car.

Complainant reported children walking on the ice at the pond and was concerned for their safety.

Complainant reported the house on Davidson Street is rather busy tonight.

In addition, law enforcement also responded to 5 log sheets, 13 ambulance runs, 2 drug court tests, 3 road and drive laws, 5 animal complaints, 11 traffic stops, 4 escorts, 7 welfare checks, 1 property accident, 1 building check, 4 transports, 2 POR registrations, 1 background check, 1 family and child complaint, 1 follow-up call, 4 child maltreatment complaints, 4 permit to purchase/carry permits, 1 fire call, 1 debris complaint, 2 paper services, 1 scam, 1 abandon 911 call, 1 burn permit, and 1 assist.

Protect yourself from credit card skimming

Skimming financial information at gas pumps is a growing problem, and Better Business Bureau of Minnesota and North Dakota says consumers need to remain vigilant to steer clear of this scam.

Skimming devices are placed inside the pump and are undetectable from the

outside. Credit card information can now even be obtained from the skimming device via Bluetooth technology so thieves don't have to go back to the pump to retrieve stolen card numbers.

To avoid having your financial information stolen, pay inside rather than at the pump.

Texas man threatens sheriff, deputies, city staff

A Texas man has been charged in Rock County for two felony offenses relating to an incident late in November.

According to a complaint filed Dec. 1, officers responded to a report around noon Nov. 30, that Karl Arthur Keene, 50, was intoxicated at the floral shop and was driving to City Hall.



Officers went directly to City Hall where they spotted the vehicle with Texas plates. They went inside and found Keene trying to pay his bill — and unable to pay the whole bill. He was attempting to give flowers to the receptionist at the counter.

Officers could smell alcohol and asked Keene to step outside, but he refused and said they were harassing him. When asked if he'd been drinking Keene reportedly started yelling — using profanity — that he wanted an attorney.

Law enforcement was aware that Keene may have a handgun that he often carried, and Keene had just sent a threatening email to Sheriff Evan Verbrugge.

When asked if he had a firearm on him, he denied having one and continued to yell and cause a scene.

When instructed repeatedly to put his hands behind his back, Keene reportedly refused and resisted until a Taser was pointed at him. At that point he was handcuffed and advised he was under arrest for disorderly conduct.

The report states that Keene then became uncooperative and refused to get in the squad car. When Sheriff Verbrugge arrived on the scene, Keene reportedly called him names and told him the deputies were as-

saulting him.

He then threatened that he was going to shoot them, and then indicated the deputies should shoot him.

When he complained that he couldn't breathe, the complaint states that he was driven to the hospital, but once there, he refused to get out of the squad car.

When deputies requested a wheelchair, Keene reportedly refused to sit in it and had to be transported on a cot. Meanwhile, he continued to yell and cause a scene, according to the report.

While in the emergency room, Keene told deputies he watches them and knows where they all live and he knows their habits. He then told them he has a .22 caliber handgun and rifle and he was going to take care of the deputies.

When the doctor came in the room, Keene reportedly threatened the doctor, who gave him a sedative so he could be examined. He was cleared medically and transported to the Nobles County Jail.

Meanwhile, deputies interviewed Luverne Floral personnel who said Keene had sexually harassed them and tried to forcibly kiss one of them.

City Hall staff also reported being sexually harassed and expressed being fearful.

Keene's vehicle was impounded and an inventory search yielded an open bottle of Bacardi on the floor, and the vehicle smelled like alcohol.

Keene was charged with terroristic threats and bribing a public employee — both felonies. He was also charged with open bottle, a misdemeanor.

283-9171 | PAPIK.COM

2017 Subaru Forester

Stock #39976N
9K

Save \$2,000

Was \$27,990 Now \$25,990

2016 GMC Terrain

Stock #124352N
18K

Save \$2,000

Was \$29,990 Now \$27,990

2016 GMC Sierra

Stock #108276N
38K

Save \$3,000

Was \$39,990 Now \$36,990

2015 Chrysler Town & Country

Stock #529239N
43K

Save \$2,000

Was \$21,990 Now \$19,990

star-herald.com

MENU

Senior Citizens

Monday, Jan. 1: Senior Dining closed for New Year's Day.

Tuesday, Jan. 2: Creamed chicken on biscuit, California blend vegetables, fruit cup, bread pudding.

Program: Two-buck Tuesday sponsored by "fair winner."

Wednesday, Jan. 3: Salisbury steak, mashed potatoes with gravy, squash, bread, blushing pears.

Thursday, Jan. 4: Roast turkey, mashed potatoes with gravy, green beans, cranberry sauce, bread, pumpkin dessert.

Program: Trivia Day.

Friday, Jan. 5: Barbecued pulled pork, scalloped potatoes, country blend vegetables, bun, applesauce.

Senior Dining offers well-balanced and affordable meals in a community atmosphere.

Gift certificates are available at the meal site or online at www.lssmn.org/nutrition.

Call Lauree Teunissen at 283-9846 to make dining reservations or for home-delivered meals.

SCHOOL NEWS

Nath graduates from Northern State

Hailey Nath, Luverne, graduated Saturday, Dec. 9, from Northern State University in Aberdeen, South Dakota.

Nath received a Bachelor of General Studies degree.

Deragisch receives SDSU scholarships

Hillary Deragisch, a graduate student at South Dakota State University, Brookings, is receiving the Barry Duane Mellegard Scholarship in Pharmacy and the Gross Scholarship in Pharmacy this academic year.

Deragisch, the daughter of David and Lori Deragisch, Luverne, is pursuing her doctorate in pharmacy.

Make the dean's list?

Let us share the news

The Star Herald strives to recognize all academic accomplishments of students from its coverage areas, and our news department relies on multiple sources (colleges, students, parents, etc.) for that information. Send school news to editor@star-herald.com or call 507-283-2333.



Lori Sorenson photo/1228 cardinal kindness

Luverne eighth-graders assemble in the small gym at school Friday morning following their trip to the Palace Theatre for the movie, "Wonder." Friday capped a monthlong study of kindness and what it means to be kind to others and true to themselves.

Students focus on monthlong lesson in kindness

By Lori Sorenson

Luverne Middle School students are no strangers to character-building exercises; they've been learning about character-building since they were in kindergarten.

But this month they've had a concentrated dose of lessons in kindness that culminated Friday with a viewing of the movie, "Wonder," at the Palace Theatre.

The movie is based on a best-

selling book about a boy born with a genetic abnormality that left his face noticeably disfigured.

The story follows his experiences of entering fifth grade in a mainstream elementary school for the first time.

All month in December, sixth-through eighth-grade students participated in #cardinalkindness, with daily assignments to practice specific acts of kindness.

For example, on Dec. 3 they did a chore at home without being asked or noticed. On Dec. 7 they let someone in line ahead of them at school. On Dec. 20 they wrote thank-you notes to teachers.

And so on. For every day of the month.

And they were asked to post a photo on their social media group #cardinalkindness.

On Friday their lessons were

driven home in the movie theatre.

In an assembly after the movie was over, some students admitted they cried.

"Seeing him finally fit in after he'd been picked on for so long ..." said eighth-grader Kristin Rud.

In the assembly, students discussed the movie and contemplated what it means to be kind.

Eighth-grader Silvia Recuero said she's going to stand up for others when she gets a chance.

"I feel like I'm a bystander too often," she said. "Words hurt a lot more than you know."

Eighth-grader Rylee Anderson said, "Don't read a book by its cover."

She and other students said they learned about self-confidence. "And don't change who you are for other people. ... Own who you are; be yourself," Anderson said.

"True strength isn't just being physically strong," said Tenley Nelson. "It's standing up for what you believe is right. That takes strength."

School counselor Stacy Schepel said the exercise was worthwhile.

"I think a lot of them have committed to an act of change," she said.

The Blue Mound Area Theatre Board first offered "Wonder" last weekend at the Palace, but agreed to hold it over in order for students to be exposed to the message in the movie Friday.



After watching the movie, "Wonder," at the Palace Theatre, Luverne Middle School returned to school to complete several projects including painting kindness rocks (left) and small group activities such as a spaghetti/marshmallow challenge (right).

Contributed photos

1967: Father Connelly gives 'Sermon On Mounds' for Luverne's 100th

The following article appeared in the July 6, 1967, edition of the Rock County Star Herald.

'Sermon On Mounds' Sets Stage For City's Centennial

"We look back in order to see where we have been — to give proper credit to those who have gone before," declared the Reverend Donald Connelly, speaking at the Luverne Centennial "Sermon On the Mounds" Sunday.

Father Connelly, assistant priest of St. Catherine's church and president of the Rock County Ministerium, recalled for his audience some of the hardships and problems encountered by the early pioneers by referring to news items which had appeared in the county newspaper during the early settlement days.

"It is easy to forget the struggles of the past — people didn't always have it so good," he pointed out.

"But," he added, "men realized their need to worship God according to their own free choice. These men of old had vision ... however, the vision all of us must have is not just a dream about the future or a looking into the past 'good



Bits by Betty

By Betty Mann, president
Rock County Historical Society

old days' but rather the past, present and future together, profiting by the struggles and sacrifices of those who have gone before.

"We are on the brink of a new civilization. We who profess to be Christians must lead the way."

Pioneer Spirit Still Needed

He stated that what we need today are men and women like the pioneers of old, people with courage to take a stand, and people who will lead, not just follow. He suggested that this could be done first by "starting where you are," calling attention to the Scriptural passage, "The Son of Man came not to be served but to serve."

Secondly, he said, "Don't underestimate yourself ... no matter how others rate your leadership skills, do not un-

derestimate your abilities.

Must Face Reality

Men and women today must face up to reality, said Father Connelly. "Those who do the pioneering in any country or enterprise soon learn they must do their part to make their dreams come true. If those blessed with food, shelter, medical assistance, schooling and religion make it their business to share with those less fortunate, much headway will be made toward peace and justice 'for the measure you give will be the measure you get back'."

He urged his audience also to set definite goals, regardless of one's station in life. "Others are enriched too by the blessings that God sends them thought you."

His final admonition was to "Put first things first (or

our lives can easily become cluttered with trivialities. The real dignity of man does not depend so much on what he has but rather on what he is."

Weather Cuts Audience

The Sunday worship service, which was held at Blue Mounds State Park, commemorated the first sermon preached in Rock county by a traveling Presbyterian elder during the summer of 1868. His only audience was a few hardy settlers and some surveyors. Sunday's audience was considerably smaller than anticipated because of the cold, threatening weather. Even so, several hundred persons gathered in front of the picnic shelter, sitting on the ground or lawn chairs and picnic tables, all of them wearing coats or jackets and many of them wrapping themselves in blankets.

Other clergymen participating in the service were the Rev. Stan Eyberg, the Rev. Wayne Hoffman, and the Rev. Guy Corvers. A brass choir, under the direction of Tom Haugen, provided the accompaniment for the hymns that were sung.

The service was also the first official Centennial



A centennial beaver hat was presented to Mayor Norm Engbretson, marking the beginning of official centennial activities here Sunday. Chosen to make the presentation was 8-year-old Bonnie Aanenson, daughter of Mr. and Mrs. Eddie Aanenson, Luverne, who was attired in long dress and sun-bonnet, reminiscent of the pioneer era of 100 years ago.

event of the Centennial year, arranged for by the Centennial Committee.

Donations to the Rock County Historical Society can be

sent to the Rock County Historical Society, 312 E. Main Street, Luverne, MN 56156.

Mann welcomes correspondence sent to manned@iw.net.

OBITUARIES

Delvin Domagala

Delvin Edward "Del" Domagala, 79, Luverne, died Tuesday, Dec. 19, 2017, at the Sanford Luverne Hospice Cottage.

A funeral Mass was Saturday, Dec. 23, at St. Catherine Catholic Church in Luverne. Burial was at the St. Catherine Cemetery in Luverne.



Delvin Domagala was born March 18, 1938, to Edward and Ruby (Pederson) Domagala on a farm near Lake Preston, South Dakota. He lived there for four years and then the family moved to the Domagala homestead near Erwin, South Dakota. Del attended country school during his grade school years before moving to Bryant, South Dakota, where he graduated from high school. After high school he farmed the Domagala homestead for eight years.

Del married Eileen Greene on Sept. 7, 1957, in DeSmet, South Dakota. In 1964 the family moved to Madison, South Dakota, where Del worked for the city of Madison in the waste water treatment plant. He also worked for a plumbing and heating company in Madison. In the fall of 1972, they moved to Luverne where they remained for the remainder of their lives. Del worked for the city of Luverne in the water and wastewater treatment plants. He retired from there in 2000. He then worked part time for the city of Ellsworth.

He was a member of St. Catherine Catholic Church in Luverne where he was very active in the Knights of Columbus and was a Faithful Navigator of the 4th Degree. Del was active in many community organizations during his life, including the Minnesota and South-

west Minnesota Wastewater Operators Association, the Luverne Optimist Club, the Minnesota Pollution Control Association and the Luverne Hockey Club Building Committee. He enjoyed spending many hours at the arena watching his children, grandchildren and great-grandchildren play hockey.

Del is survived by his wife, Eileen Domagala, Luverne; six children, Faye (Gordon) Bremer, Luverne, Doug Domagala, Hills, Larry Domagala, Luverne, Sharon Kessler, Luverne, Wayne Domagala, Luverne, Geni Domagala, Brandon, South Dakota, and Gary Domagala, Brandon, South Dakota; 11 grandchildren, Kelly (Nick) Cleveringa, Whitney (Jesse) Lafrenz, Savannah (Eric) Teune, Nicholas (Amy) Domagala, Nathan (Alyssa) Domagala, Natalie (friend, Rachel) Domagala, Angela (Jason) Clark, Sara (Brad) Whipple, Sadie Kessler, Logan Domagala and Dalton Domagala; 12 great-grandchildren; and three sisters-in-law, Rita Domagala, Adrian; Jan Domagala, Cottage Grove; and Beverly (Vinal) Christopherson, Paynesville.

He was preceded in death by his parents; a daughter-in-law, Mercede Domagala; an infant sister, Faye, two brothers, Lyle and Leroy Domagala; and two sisters, Rose Gustafson and Geneva Ladwig.

In lieu of flowers, memorials are preferred to the Hospice Cottage in Luverne.

Arrangements were provided by Dingmann Funeral Home of Luverne, dingmannandsons.com. (1228 F)

Pearl Sundem

Pearl Sundem, 99, Hills, also loved playing games, especially cards. She was a member of the Bethlehem Lutheran Church.

A funeral service will be at 11 a.m. Thursday, Dec. 28, at Bethlehem Lutheran Church in Hills. Burial will follow in the Flowerfield Cemetery at Hills. Visitation will be one hour prior to the service at the church.

Pearl Roning was born July 23, 1918, to Lars and Ida (Kolsrud) Roning in Hills. She graduated from Hills High School in 1936.

She married Herb Sundem on Oct. 17, 1936. After moving from the farm, Pearl worked at the hatchery in Hills and later assisted both Dr. Johnson and Dr. Bofenkamp in Luverne for many years. After retiring, she and Herb enjoyed traveling, especially with the Prime Timers. She



Pearl is survived by her son, Terry (Marilyn) Sundem of Sherman, Illinois; a daughter-in-law, Dee Sundem of Minneapolis; three grandchildren; ten great-grandchildren; a sister-in-law, Marj Roning, and a brother-in-law, Dutch Schubert.

She was preceded in death by her husband, Herb, on Jan. 27, 2007; a son, Verwayne Sundem; brothers Dennis, Jim and Ray Ronning; a sister, Marcie Schubert; and a grandson, Scott Sundem.

Arrangements were provided by Jurrens Funeral Home of Hills, jurrensfuneralhome.com. (1228 F)

Phyllis Murphy

Phyllis Elaine Murphy, 94, Brainerd, formerly of Baxter, died Friday, Dec. 22, 2017, at Good Samaritan Society - Woodland.

Mass of Christian Burial was Wednesday, Dec. 27, 2017, at St. Francis Catholic Church in Brainerd. Burial was in Baxter City Cemetery.

Phyllis Horigan was born on April 28, 1923, to Lyle and Frances (Kohn) Horigan in Luverne. She graduated from Luverne High School in 1941.

Phyllis worked as a telephone operator for Northwestern Bell for 30 years, retiring in 1979. She was a member of St.

Jude Guild, a Gold Star Mother and belonged to the V.F.W. and American Legion.

Survivors include her sisters, Kay Nelson and Therese (Dave) Potter; and her nieces and nephews.

She was preceded in death by her parents; sons Danny and Jim; brothers Lyle Jr. and Bud; sisters Janet Dawson and Mary Schneekloth; an infant brother, Joseph; and her nephew, Andrew.

Arrangements were provided by Nelson-Doran Funeral Home of Brainerd. (1228 F)

Ellen Kjenstee

Ellen B. Kjenstee, 91, Mankato, died Thursday, Dec. 21, 2017, at Mayo Clinic Health System - Mankato.

A funeral service was Wednesday, Dec. 27, at Mt. Olive Lutheran Church in Mankato.

Ellen Oldre was born Sept. 25, 1926, to Gust and Henrietta Oldre in Kenneth. She was a graduate of Magnolia High School and received her teaching certificate from Mankato State.

Ellen married Cleo Kjenstee on June 30, 1950, in Kenneth. She was a nursing assistant at the Luverne Hospital and taught elementary school in Hardwick and Luverne.

Ellen crocheted afghans for her three daughters, 12 grandchildren and most of her 20 great-grandchildren. She enjoyed playing cards, games and crossword puzzles but mostly time spent watching grandchildren's and great grandchildren's activities and spending time with family.

Ellen is survived by her husband, Cleo Kjenstee; daughters Carol (David) Hagen of Glenville, Connie (Joe) Meyer of Mankato and Cathy (Dean) Kluge of Mankato; a stepson, Ron (Chris) Scheetz of Portland, Oregon; grandchildren, Joshua (Emily) Metcalfe, Kjersten (Josh) Hoyord, Noah (Tina) Metcalfe, Ben (Lindsey) Metcalfe, Brandon (Melissa) Meyer, Abigail (Matt) Shilling, Stephanie (Chad) Onken, Derek Meyer, Adam (Heather) Kluge, Kjelsey (Nick) Polzin, Austin (special friend Erin Smith) Kluge, and Chad (special friend Jenny Schmuck) Kluge; 20 great-grandchildren; sisters-in-law Marlys (Al) Bringelson of Los Angeles, California, and LaVonne Kjenstee of Gresham, Oregon; and many other relatives and friends.

She was preceded in death by her parents; her in-laws Carrie and Oscar Kjenstee; brothers Norman (Ardis) Oldre and Vernon (Agot) Oldre; a sister, Ilene (Floyd) Jackson; brothers-in-law Richard (Virginia) Johnson and Lee Kjenstee.

Arrangements were provided by Woodland Hills Funeral Home of Mankato. (1228 F)

DEATH NOTICE

Stanton 'Stan' Petersen

Stanton Harvey "Stan" Petersen, 75, Luverne, died Friday, Dec. 23, 2017, in his home.

A gathering of family and friends will be from 1-3 p.m. Thursday, Dec. 28, at the Hartquist Funeral Home in Luverne. Inurnment will follow at Maplewood Cemetery in Luverne.

Arrangements are by Hartquist Funeral Home of Luverne, www.hartquistfuneral.com. (1228 DN)

H-BC senior Trenton Bass returns to Hills

By Glenda McGaffee

H-BC senior Trenton Bass returned to Hills Thursday, Dec. 21, after spending the past couple of months at Craig Rehab in Denver, Colorado.

He's been recovering and regaining strength from a football injury Sept. 8 that paralyzed him from the torso down.

His mother, Missy Bass, shared a Facebook update Thursday about the experience.

"Yesterday we had to say goodbye to some wonderful people to Craig. We will be forever thankful for the friendships we made at Craig, for the doctors, nurses, techs, therapists, and other wonderful families that made such a great team during our stay," she wrote.

The Basses arrived home at 4 a.m.

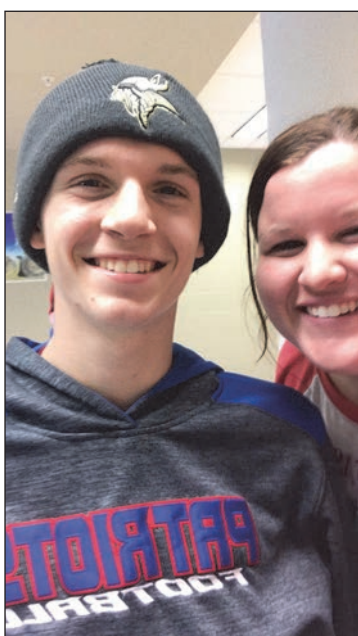
"Needless to say, today we were a bit tired, but Trenton did make it to the school to say 'hi' to some teachers and friends this afternoon," she wrote.

"He is truly excited to get back to school (ironic coming from a 17-year-old boy)."

Missy shared that they had also stopped to see other family members and finally relax at home.

"We are very excited to be back in the comfort of our own home, but already miss the families and staff that we created such great bonds with at Craig," she said.

"We are now focusing on the true meaning of Christmas, which for us this year is even more meaningful. Without Christ, these last few



Trenton Bass poses for a selfie with Samantha McGaffee. The H-BC senior returned home from Colorado on Thursday, Dec. 21, after spending months in Craig Rehab Hospital. He stopped at the local high school to visit friends, classmates and staff.

months would have been ... well, I don't even know how they'd be. All we know is that we are thankful for our Savior who was born to save us all and to give peace through trials."

The Basses came home to a surprise welcome, thanks to friends and supporters who had cleaned and painted and renovated a bathroom for Trenton and stocked their refrigerator with food.

"We live in such a wonderful community and are so very blessed," Missy said.

"For those of you we've never met, thank you for all the prayers, encouragement and support. This journey has truly been easier because you are a part of it and supporting us with your prayers."

REMEMBER WHEN

10 years ago (2007)

•An impartial third party might settle the teacher contract that teachers and the district can't agree upon yet.

The Luverne Education Association requested that its contract go to arbitration because it felt negotiations have stalled.

The school applied for arbitration, but negotiations are still ongoing. If the arbitrator is used, it could cost the district up to a maximum of \$20,000.

The deadline set by the state for all teacher contracts is Jan. 1, but that is extended if the school is in arbitration.

25 years ago (1992)

•Mort Skewes has decided to retire from an active practice of the law. ...

Besides maintaining his private practice, Mort served as a municipal judge from 1936 to 1938 and then began a stint as county attorney that lasted for 20 years from 1938 to 1958.

In 1963 he took on his first partner, Marlyn Vollmer. Vollmer was with the firm for 13 years until his death in 1976.

The firm became Skewes, Klosterbuer and Connell in 1976 until Tim Connell was appointed Judge in 1987.

On January 1, when Mort retired to an Of Council status, Terry Vajgrt, who has been with the firm for the past two years, will become a partner.

50 years ago (1967)

•Five persons escaped serious injury, or worse, when a gasoline fume-triggered explosion blasted the interior of Willie's Mobile about 4:15 p.m. Saturday.

Damage to the station amounted to over \$2,000 according to a rough estimate made by Wilbert Eichmann, station owner.

Bruce Oye, 18, station employee received first degree burns of the hands and face. Jim Ladd, 17 received minor burns about the legs. Mrs. Hazel M. Snyder of Fargo, who was sitting in the waiting room waiting for the Worthington bound bus had her hair scorched and face dirtied when the blast let go, taking a window

out with it. Mrs. Eichmann and a daughter were in the station. The mother had her eyebrows singed and for a few moments was in near hysteria as it looked as though the child, in back in the small office by the desk, might be trapped by the flames that were shooting out of the shop hole into the waiting room.

75 years ago (1942)

•That Rock County farmers will find it necessary to share what machinery they have at the present time instead of replacing worn out equipment with new machines, was evidenced by the quota of new machinery that would be available during 1943. ...

According to Mr. Arp, the following will be available for Rock County during the coming year: 25 new tractors, wheel type; five horse drawn corn planters; two tractor drawn corn planters; three grain drills; 19 tractor moldboard plows; 12 spike tooth narrows (although not indicated. These are expected to be regular sized, four section type); four spring tooth harrows; 19 disc harrows (no length specified); 33 tractor corn cultivators; six farm wagons; 19 milking machines; seven cream separators.

100 years ago (1917)

•An old time wolf hunt will be staged in Rock county next Sunday, and all devotees of the sport are invited to bring their fleet-footed hounds and join in the chase.

Those who wish to participate in the event are to meet at Chas. J. Larson's woodwork shop in this city Sunday morning between 8:00 and 8:30 o'clock so that an early start can be secured. A number of people from Rock Rapids, Valley Springs and Trosky are planning to be there with their hounds for the hunt, and some real sport is expected.

From the number of depredations suffered by sheep owners, wolves are believed to be especially numerous throughout the county, and while the regular state bounty on wolves has not been available for the present year, Rock county sheep owners offer a bounty of \$25 for every wolf killed.

HANG UP ON FRAUD.

Stop fraud before it starts. Get a FREE fraud prevention toolkit for older adults.

EMAIL: consumer.protection@state.mn.us

CALL: 651-539-1600 / 800-657-3602 (toll-free outside the Twin Cities)

m COMMERCE DEPARTMENT

Saturday, December 30
6 p.m. - 9 p.m.
PRIME RIB
Baked Potato
Salad, Toast and Dessert
\$13.99

Sunday
New Year's Eve
OPEN
11 a.m. - 9 p.m.
Kitchen Open
11 a.m. - 6 p.m.
Closed
New Year's Day

Howling Dog SALOON
507-449-0454

Life as a Facebook

Year in Review continued from Page 3A

Pilgrim's Pride, after buying Gold'n Plump last year, announced it will close the poultry processing plant on Dec. 29.

It was a devastating blow to the 200 employees, some of whom had worked in that plant their entire lives — including the days it housed Iowa Beef Packing.

The effects of that story will trickle into 2018 as these workers find new jobs and as the future of the plant west of Luverne is yet to be determined.

The local agriculture economy continues to hover as an ominous cloud over an otherwise bright year of business growth.

Commodity prices reached a 10-year low in 2017, with corn at about \$3 per bushel and soybeans hovering between \$8.50 and \$9. For comparison, these prices are less than half of what they were during record prices just five years ago.

The 2017 harvest was healthy, but low prices have left local producers slim profit margins and — for many — revenue losses.

Not surprisingly, Rock County farmers are responding with resilience and ingenuity, implementing new and courageous conservation farming methods to boost production and preserve soil and water.

The 2017 Star Herald pages carry a common theme of conservation farming practices to save soil and water, protect the environment and even boost profits.

Small news, big impact

Amid the big headlines of economic impact were dozens of smaller news items that have combined to have big impact locally. The list includes, but is not

limited to:

- Mike and Nick Mead bought the Luverne Building Center.

- Oasis Care Home opened.

- Computer Clinic opened.

- Firefly opened as a "sister" boutique to Dragonfly.

- JJ's Tasty Freeze celebrated 40 years under Randy Slade who sold the diner later in the year.

- Luverne Body Shop opened in its new location.

- East Casey's closed and Casey's south was improved and expanded.

- Remax bought the former Smooky's building.

- Tap Rack Bang Gunsmithing opens in former TV repair shop.

- Holy Trinity church building was sold to artist Lori Hallstrom.

- Take 16 brewery opened its taproom.

- Railroad was sold to Ellis & Eastern; 50,000 railroad ties are cleaned up.

- AbadabaDo Salon opens in former Mari Posa building.

- Mall on Main opens with attractive renovations to the former Loopy's location.

- Coffey Contemporary Arts and Lord Grizzly Gallery opens.

- Rock County Eye Clinic updated its façade and expanded into the former dental office space.

- Quality Printing purchased the former Blue Mound Banquet Center and moved its printing operation there.

- Keith Aanenson sold his locksmith business to Stephen Harsma.

- Rock County Implementation broke ground on a renovation and expansion project.

By Mavis Fodness

Kenneth farmer Brian Bergman said he loves being a farmer, but there is one part of the job that bothers him.

"One of my pet peeves is erosion," he said.

Gullies, in particular, are a nuisance not solely for the loss in crop production but the potential to damage equipment. The possibility of running into a gully in the field keeps Bergman on his toes.

"You have to stay persistent with (battling) it," he said.

For his work against erosion, Bergman was presented with the 2017 Minnesota Board of Soil and Water Resources Outstanding Conservationist Award.

Bergman was among 61 individuals or organizations recognized for efforts to improve and preserve the state's natural resources.

He was nominated for the yearly award by the Rock County Soil and Water Conservation District supervisors.

Experience working in the fields has taught Bergman that certain farming practices curb erosion.

Since he began farming in 1996, farmable basins, waterways and grass buffers have proven to slow water runoff and wind erosion in newly worked soils.

He hired custom strip-till equipment operators to plant fields that were particularly prone to erosion.

Bergman's big push against erosion came after 2014 when heavy flooding took its toll on corn and soybean fields in Battle Plain and Vienna townships near the Rock River.

Working with Land Management Office officials, Bergman cost-shared projects that repaired what the heavy rains and flooding

Kenneth farmer honored as outstanding local conservationist for 2017



Submitted photo

Brian Bergman (left) and his wife, Tami Bergman, were honored earlier this month with the 2017 Outstanding Conservationist Award through the Minnesota Association of Soil and Water Resources in early December. Pictured with the Bergmans is "The Farmer" magazine editor Paula Mohr. The magazine is a yearly sponsor of the award.

damaged.

According to LMO officials, Bergman maintains four waterways, 20 water and sediment control basins, two terraces, and grass buffers on four separate fields.

Some fields are solely strip-tilled.

Bergman's conservation practices don't stop in the field.

As operator of a 270-head cow/calf operation, he also improved his feedlots to manage runoff and improve water quality.

Manure from the livestock operation is incorporated onto the fields to improve soil fertility.

Living the dream

Bergman grew up on a farm near Kenneth and as a youth always dreamed of farming.

"I knew what I wanted to do since I could talk," he said.

He committed to ag and livestock production as a profession after high school and after he attended Ridge-water College in Willmar.

"There's something a little different every season," Bergman said of farming.

After graduating from Luverne High School in 1995 he purchased his first stock cows in order to build some equity as he assisted his father and uncle in their joint farming venture.

His father, Leon, died in 2007, and his uncle, Lloyd,

died prior to that.

Without their help, Brian has relied on hired workers to assist on the farm. "We have always had good help," Bergman said.

Help has also come in adopting new ag technology through the decades.

Bergman admits the adoption of variable fertilizer application and plant population controls saves time and lessens input costs at the end of the season.

He said he was honored when local SWCD officials asked him to be this year's conservation honoree.

Also in the family farm operation are Bergman's wife, Tami, and their two school-aged sons, Ross and Will.

150 Donations of \$150 in celebration of Luverne's 150th

Please consider the Luverne Area Community Foundation as part of your end of year donation planning. As our community celebration of 150 years comes to an end we are challenging 150 donors to give \$150 to help support our commitment to community.

Giving is a thoughtful and instinctual act of human nature.
We give to help others in need.
We give because we have extra to share.
We give to make a difference.

**So please join us in making a difference
and add your name to the list below.**

(If you prefer to remain anonymous with your gift we will honor that.)



Checks payable to
LUVERNE AREA COMMUNITY FOUNDATION

P.O. Box 623 | Luverne, MN 56156

Please memo 150 for 150 on your check or you can make a credit card donation on our website at www.luvacf.org | All gifts are 100% tax deductible.

CURRENT DONORS

NEW DONORS THIS WEEK

Christmas Angel 1
Christmas Angel 2
Darlene Woolsey
Mike and Rosie Reker
McClure Electric
Curt and Jean Laudon
Patrick and Angela Foerster
James and Carol Hatting, in memory of our loved ones
Gary Overgaard and Emily Lodeen
Don and Lona Klosterbuer
Tim & Connie Connell
Betty Mann
Terry and Michelle Vajrgt
Greg and Dianna Spath
Jere and Suanne Ohme
Pat Scheidt
Grace Lutheran Church Women
Dave and Randi Gangestad
Lowell and Diane Jauert

Lewis Family Drug
Dr. Richard and Carol Morgan
Melvin and Denise Fick
John and Nyla Sohl
Grant Helling
Bill and Janet Preuss
Betty and Keith Luethje
Eric and Cheryl Hartman
Sanford Luverne Medical Center
Agri-Energy, LLC
Douglas and Carla Ennenga
Sandy Heck, in memory of Steven Heck
Gary and Barb Golla
Steve and Mary Jo Graphenteen
Chuck and Jean Egland
Dingmann Funeral Home
Anna Tilstra
Arlene Wynia
Beryl Haugen
Bob and Rhonna Jarchow
Carol Kuhlman

Cary and Karen Radisewitz
Curt and Marilyn Bloemendaal
Dale and Patti Nelson
Dallas Bowron
Daryl and Lynda Jacobsen
Dianne and Rodger Ossenfort
Don and Lisa Dinger
Doug and Shellie Eisma
Dr. Joshua and Emily Crabtree
Dr. Harold Tilstra
Dr. Nathan and Sandy Rud
Dr. Paul and Janice Rud
Drs. Stephan and Judy S. Chesley
Elizabeth and Jason Schear
Everett and Janice Brandenburg
Gawaine and Diane Diekevers
Gene and Nadine Schoep
Gertrude Den Herder
Harold and Carol Stroh
Harold and Lori Schmidt
Hartquist Funeral Home

Isaac DeBoer
Jeff and Sara Hartquist
Jerome and Delaine Jensen
Jody and Sharla Reisch
John and Brenda Call
Keith and Velda Maine
Leroy W. Luitjens
Lowell and Shirley Harrison
Mandy Skattum & Family
In memory of Nate Skattum
Mary Tilstra
Merlin and Debra Wynia
Michael and Cheryl Ann Cox
Mike and Jennifer Engesser
Randall and Vicki Smook
In memory of Jordyn Olsen
Rick and Mary Peterson
Rock County Eye Clinic, Dr. Sandra Carman
Ryan and Charlotte Johnson
Twila VerSteeg
Wayne and Ann Robinson

24/7 ... Rain or Shine ...

Your local, independent agent will be there.

Working for you - meeting your needs.

South Hwy. 75, Luverne, MN • Ph. 507-283-2381

Auto-Owners
INSURANCE
LIFE • HOME • CAR • BUSINESS

READ THE NEWS ONLINE!

**Sports
Opinion
News
Classifieds**

Subscribe to the online edition of the **Star Herald**

tis the season
for engagements!

Come celebrate with us!

- ❁ Just a short drive to Luverne!
- ❁ Private dressing rooms for both the Bride and Groom
- ❁ Set-up and clean-up included
- ❁ Warm earth tones and chandelier lighting
- ❁ Banquet seating 20 - 400+ with room size options

Secure your date today!

105 South Estey Street
Luverne, Minnesota
507-283-9664
Like us on Facebook
www.grandprairieevents.org

Holiday Hours

Hwy 75 will be open Saturday, December 30 ~
Lobby 9 am - 12 pm | Drive up 8 am - 12 pm

All Minnwest Bank locations will be closed on Monday, January 1, 2018

All items accepted after 6 pm on Friday, December 29, 2017 will be posted Tuesday, January 2, 2018

116 East Main Street • Luverne • 507-283-2366
Hwy. 75 • 800 South Kniss • Luverne • 507-283-9131
304 East 1st Ave. • Beaver Creek • 507-673-2334

Member FDIC www.minnwestbank.com MoneyLine 888-616 BANK



Mavis Fodness photo/1228 Published Authors
Luverne Elementary fifth-graders became published authors Wednesday, Dec. 20, when the student-designed hardcover books were unveiled in front of parents, grandparents and others in an unveiling conducted in the school's commons. Teacher Wendy Bosshart (standing, front) begins the program with opening remarks.

Fifth-graders become first-time authors

Publishing of original stories, illustrations brings new twist to writing lessons for elementary students

By Mavis Fodness

Fifth-grade students at Luverne Elementary joined the ranks of published authors Wednesday, Dec. 20, when their neatly bound hardcover books were unveiled to family members gathered in the elementary commons.

"It was fun," said teacher Amy VonHoltum in a video presentation for the event. "It was crazy. It was a lot of work but everyone had a chance to share their talents and contribute. I think the end results are nothing short of amazing."

VonHoltum and fellow teacher Wendy Bosshart spent three weeks in the English lesson that focused on working creatively through the writing process.

This is the first time published books were included in the end result.

"We are always looking for ways to revamp the writing (lesson) with creative ways for fifth-graders," VonHoltum said.

Students waited several weeks for Student Treasures Publishing in Topeka, Kansas, to print, assemble and bind the books. Students could purchase a book for just under \$20.

VonHoltum explained each of the five fifth-grade classes met as a group where they generated ideas for their book and agreed on a topic.

Each of the 104 10- and 11-year-olds formed first drafts for one page in their respective class books. Accompanying the students' stories were handmade drawings.

While the book pages were organized using a computer program, each student reprinted by hand their story in the official book pages using a black marker.

"You may catch a few errors in our books but that is OK," she said. "It is really hard having one shot at being flawless."

VonHoltum's class chose the topic "Everyday Heroes," with each student selecting one hero to include in the book.

Firemen, truck drivers, garbage haulers, soldiers, nurses and highway workers were some of the heroes the students included.

Student Terran Siebenahler only had to look within his own family for an everyday hero. Classmates also chose Siebenahler's design for the book cover.

The cover design included badges from various professions including firemen and soldiers.

Siebenahler chose a veterinarian as his everyday hero. Included with the story was a caricature of his German shepherd named Bella.

"Vets are everyday heroes. They help pets if they get hurt or aren't feeling well," Siebenahler wrote in his story.

'It was a lot of work but everyone had a chance to share their talents and contribute.

I think the end results are nothing short of amazing.'

-Teacher Amy VonHoltum

Siebenahler's mother, Holli, said Bella lives at the grandparents' home, and Terran visits often.

"Bella is pretty much the first to greet him," she said.

The fifth-grade teachers, the titles of their books, and cover designers are as follows:

- Wendy Bosshart, "Who Am I," Ella Reisdorfer.
- Katie Mostad, "I Am Super," Katia Jarchow.
- Gordon Hansen, "Faces of the Future," Emma Nath.
- Travis Bullerman, "Kindness Rocks," Madi Wenzel.



Mavis Fodness photo/1228 Published Authors
Five students had their drawings selected as cover art and included (from left) Madi Wenzel, Terran Siebenahler, Emma Nath, Katia Jarchow and Ella Reisdorfer. Each hold the book cover they designed.



A sign was created as a photo backdrop for Luverne Elementary School's published author book unveiling event on Dec. 20.

'You may catch a few errors in our books but that is OK. It is really hard having one shot at being flawless.'



Each of the 104 fifth-graders wrote a page in the class books. Terran Siebenahler wrote about veterinarians for teacher Amy VonHoltum's class book called "Everyday Heroes." He wrote, "Vets are everyday heroes. They help pets if they get hurt or aren't feeling well." A drawing of his grandparents' German shepherd accompanied the story.

Wrestlers take setbacks

By John Rittenhouse

The Luverne wrestling team completed the 2017 portion of its schedule by participating at a triangular meet in Granite Falls Dec. 19.

Two LHS individuals went 2-0 at the event, but the Cardinals dropped both matches to slip to 0-4 for the season.

Belgrade-Brooten-Elrosa handed the Cards a 63-15 setback in the opening match, while Quad County topped LHS 50-27 in the finale.

Riley Cowell and Tucker Oeltjenbruns went 2-0 for the Cards.

Cowell pinned B-B-E's Walker Bents in 4:41 and topped QC's Jayce Hernandez 13-6.

Oeltjenbruns registered a 9-4 win over B-B-E's Tyler Jensen before pinning QC's David Hidalgo.

Jed Dooyema recorded a win against B-B-E, while Jayden Renken registered a pin against QC and Hunter Baker and Tom Brown drew forfeits.

LHS returns to the mat at the Jackson County Triangular Jan. 5.

Match wrap-ups

B-B-E 63, LHS 15
106 (L) Cowell pins Bents.
113 (B) Fischer pins B. Ripka.
120 (B) Young pins J. Ripka.
126 (B) Swanson pins Baker.
132 (L) Oeltjenbruns 9-4 Jensen.
138 (B) Kampen by forfeit.
145 (B) Bents pins DeSollar.
152 (L) Dooyema pins Linder.
160 (B) Gilbert pins Renken.
170 (B) Jenniges 4-0 Brown.
182 (B) Kern by forfeit.
195 (B) Cebulla by forfeit.
220 (B) Roering by forfeit.
285 (B) Thompson by forfeit.

QC 50, Luverne 27

106 (L) Cowell 13-6 Hernandez.
113 (Q) Kluver 11-3 B. Ripka.
120 (Q) Jimenez pins J. Ripka.
126 (L) Baker by forfeit.
132 (L) Oeltjenbruns pins Hidalgo.
138 (Q) Ohliger by forfeit.
145 (Q) Howard pins DeSollar.
152 (Q) Friesse 9-0 Dooyema.
160 (L) Renken pins Todd.
170 (L) Brown by forfeit.
182 (Q) Jimenez by forfeit.
195 (Q) Fischer by forfeit.
220 (Q) Schmidt by forfeit.
285 (Q) Miller by forfeit.



John Rittenhouse photo/1228 lhb 3

Luverne junior Gaige Nath skates past Worthington defender Zach Ahrenstorff as he leads a charge into the offensive zone during Thursday's home game against the Trojans. Nath scored one goal during an 8-0 victory that upped Luverne's Big South Conference record to 7-0.

Cardinal boys fall from hockey's unbeaten ranks Friday against T-G

By John Rittenhouse

Luverne's seven-game winning streak to start the season came to an end Friday when the Cardinals lost a 3-1 decision to Totino-Grace in Brooklyn Park.

LHS secured six- and eight-goal wins over Windom and Worthington prior to falling to the Eagles.

The 7-1 Cardinals compete at the South St. Paul Tournament Dec. 28-30.

T-G 3, Luverne 1

A run of seven consecutive wins ended when the Cardinals came up on the short end of a two-goal decision against T-G Friday in Brooklyn Park.

LHS took a 1-0 lead into the third period of play, but the Eagles scored three

unanswered goals in the final 17 minutes of play to hand the Cardinals their first loss of the season.

T-G's Jack Bonfe tied the score at one 4:16 into the third period and gave the Eagles their first lead of the game (2-1) when he netted his second goal of the stanza with 4:45 remaining.

An empty-net goal by T-G's Brandon Lee with 30 seconds left iced the win for the Eagles.

Nick Harder scored Luverne's lone goal with 18 seconds left in the second period after being set up by Coy Gonnerman.

T-G sported a 31-28 advantage in shots on goal in the game.

Daniel Tofteland made 28 saves in net for the Cards.

LHS 8, Worthington 0

A balanced effort on both sides of the ice led the Cardinals to an eight-goal home win over the Trojans Thursday.

Eight different players netted goals for an LHS team that outshot Worthington 51-11.

Tofteland and Oscar Holmberg took care of business on the defensive end of the ice to produce a combined shutout in goal.

Tofteland stopped all seven shots he faced in the first two periods of the contest, while Holmberg made four saves in the third period.

The Cardinals took a 2-0 lead in the first period before putting the game away with a six-goal second stanza.

Trey Roberts opened the scoring 48 seconds into the game before Kasyn Kruse doubled Luverne's lead (2-0) with 8:47 remaining in the opening stanza.

Luverne's Gaige Nath and Tyler Reisdorfer netted short-handed goals 50 seconds apart to ignite a six-goal second period.

Declan Beers recorded an unassisted goal with 7:49 left in the period, and the Cards scored three goals in a span of 1:02 late in the stanza.

Colby Crabtree and Harder found the net at 2:08 and 1:56 respectively.

Mason Steensma completed the spurt with a power-play goal at 1:06.

Harder and Beers turned in two-assist efforts for the Cards.

Nath, Jim Erickson and Tyler Roberts chipped in one assist each.

LHS 7, Windom 1

The Cardinals ran their winning streak to six consecutive games with a six-goal triumph over the Eagles Dec. 19 in Luverne.

Kruse recorded a hat trick and Beers turned in a four-assist effort to lead an offense that outshot Windom 51-26 in the game.

A pair of LHS goalies made a combined 25 saves.

The teams played a scoreless first period before netting four goals in the second and third stanzas.

Kruse gave the Cards a 1-0

Fall/continued on page 3B



John Rittenhouse photo/1228 lhb 3

Luverne junior guard Derek Lundgren tossed in 18 points during Friday's 75-44 home victory over Edgerton.

Basketball team posts second victory of season

By John Rittenhouse

The Luverne boys' basketball team split a pair of games at different venues late last week.

The Cardinals lost a 28-point game in Jackson Thursday before defeating Edgerton by 31 points Friday in Luverne.

Luverne, 2-5 overall, hosts Marshall Jan. 2.

LHS 75, Edgerton 44

The Cardinals notched their

second win of the season when they dismantled the Flying Dutchmen by 31 points Friday in Luverne.

Luverne trailed by four points early in the game before outscoring EHS 71-36 the rest of the night during a convincing victory.

After surrendering the first four points of the game, LHS

Post/continued on page 4B

LHS girls rack up three consecutive wins

By John Rittenhouse

The Luverne girls' hockey team reeled off three consecutive wins for the first time this season during a span of four days last week.

LHS nipped Windom by one goal in overtime Dec. 19 and skated to an 8-0 victory over Worthington Thursday in games played at the Blue Mound Ice Arena.

The Cardinals nipped Waseca by one goal in Waseca Friday.

Luverne, 9-5-1 overall, plays at the Schwan Cup in Blaine Dec. 28-30.

Waseca 3, Luverne 2

Luverne's longest run of wins this season reached three games with a one-goal win in Waseca Friday.

The home-standing Blue Jays outshot LHS 23-10 during the contest, but the Cardinals put together a three-goal run in the first and second periods that led them to victory.

Riley Brown gave the Blue Jays a 1-0 lead 2:25 into the game, but LHS scored two goals in a span of 3:16 to gain a 2-1 edge.

Shelby Kracht tied the score at one when she scored after being set up by Rylee Gee 31 seconds after Waseca's first goal.

Kamryn Van Batavia gave the Cards a lead with an unassisted tally that came with 10:48 left in the first period.

LHS upped its lead to 3-1 when Lexi Henrichs found the net for an unassisted goal with 11:20 left in the second period.

Jayde Pederson registered a power-play goal for Waseca 1:01 into the third period to make it a 3-2 game, but the Blue Jays were unable to tie the game over the final 15:59.

Emilie Bartels made 21 saves in net for LHS.



John Rittenhouse photo/1228 lgh 6

Luverne eighth-grader Billi Connell moves the puck into the offensive zone during Thursday's home win over Worthington. LHS surpassed the .500 mark in league play with an 8-0 win.

LHS 8, Worthington 0

The Cardinals surpassed the .500 mark in Big South Conference play with an eight-goal home win over Worthington Thursday.

Luverne scored seven goals in the first two periods of play and received a 15-save shutout in goal from Bartels during the lop-sided victory.

Reghan Bork recorded a hat

trick for the winners and Van Batavia and Kracht chipped in two goals each for an LHS team that sported a 35-15

LHS/continued on page 4B

Dragon boys take third-place game

By John Rittenhouse

The Adrian boys went 1-1 and place third at the Adrian Holiday Basketball Tournament late last week.

The Dragons fell by six points to Red Rock Central during Thursday's opening, but AHS bounced back to defeat Wabasso by 17 points during Friday's third-place game.

Adrian, 3-4 overall, hosts Fulda Friday.

Adrian 66, Wabasso 49

A strong second half lifted the Dragons to a 17-point victory over the Rabbits during the third-place game of the Adrian Holiday Basketball Tournament.

The game was up for grabs with AHS sporting a 26-23 edge at the intermission.

Adrian settled the issue by outscoring Wabasso 40-26 in the final 18 minutes of play to win the game handily.

Ryan Wieneke netted 24 points and pulled down eight rebounds for the winners.

Skylar Polzine added 15 points and Christian grabbed nine rebounds for Adrian.

Box score
Weidert 2 0 2-3 6, John 0 0 0-0 0, Wieneke 3 5 3-5 24, Ross 1 0 0-0 2, Henning 1 0 0-0 2, Veld 1 2 0-0 8, Frodermann 0 0 0-0 0, Polzine 7 0 1-2 15, Luettel 1 0 7-11 9.

Team statistics
Adrian: 23 of 53 field goals (43 percent), 13 of 21 free throws (62 percent), 29 rebounds, seven turnovers.
Wabasso: 18 of 47 field goals (38 percent), four of six free throws (67 percent), 19 rebounds, six turnovers.

RRC 67, Adrian 61

AbignightbyWieneke wasn't enough to lift the Dragons into the championship game of their own Holiday Tournament Thursday.

Wieneke was impressive during the contest, but it was RRC that outscored AHS by three points in both halves of a six-point victory.

The Falcons led 32-29 after 18 minutes of play before using a 35-32 scoring edge in the second half to complete their win.

Wieneke, who pulled down 11 rebounds, hit seven three-point shots and scored 37 points overall for the Dragons.

Brady Henning netted 11

Third/continued on page 4B



Star Herald file photo

Solomon Nielsen became the all-time wins leader of the LHS wrestling program during the 2016-17 season.

Record-setting season by Nielsen tops list of sports stories of 2016

With 2018 just around the corner, the time has come to take a look back at all the great accomplishments turned in by area athletes in 2017.



As has become a tradition, I'll dedicate my final column of the year to pointing out and ranking what I believe to be the top sports stories of 2017.

I found seven state-qualifying team or individual accomplishments that will form my top stories of the year list.

All of them deserve mention in this piece, but, as always, ranking them in order of significance is a tough task.

To that end, here is what I came up with.

No. 7: AHS golf

Adrian High School junior Mitchell Veld earned an individual berth into the Minnesota State Class A Golf Tournament last spring. Veld's first appearance in state competition ended with him earning a share of 59th place at the state classic in Becker.

No. 6: LHS tennis

The Luverne Cardinal boys' tennis team experienced another banner year in 2017. The Cardinals won the Big South Conference title and claimed the Section 3A Team Tournament championship for the eighth consecutive season.

LHS came up on the short end of 5-2 decisions against Virginia and Litchfield at the Minnesota State Class A Tournament in Minneapolis, ending a 19-4-1 team season. Along with advancing to state as members of the team, seniors Chris Jelken, Dalton Schoeneman and Layne Curtis advanced to state individually as well.

Jelken, who claimed the Section 3A singles crown, went 2-2 and placed second in the consolation bracket.

Schoeneman and Layne Curtis won the Section 3A doubles title and went 1-2 at the state tournament.

No. 5: LHS boys' hockey

The Luverne Cardinal boys' hockey team turned in an outstanding season for first-year head coach Phillip Paquette.

The Cardinals won the Big South Conference title and captured the program's second Section 3A championship by defeating Marshall 5-1 in the title game.

Unseeded LHS nearly upset No. 1-seeded Hermantown in the quarterfinal round of the Minnesota State Class A Tournament before falling 3-2 in overtime.

LHS dropped a 5-2 game to East Grand Forks in the consolation semifinals, ending a 21-7-1 season.

No. 4: LHS, H-BC track

The Luverne and Hills-Beaver Creek track programs provided the highlights of the spring sports season in 2017.

Both the LHS girls' and boys' teams captured the Section 3A True Team titles in May.

The Cardinal boys went on to place fifth at the state meet, while the girls fell 1.5 points short of winning the state championship.

The girls went on to win the BSC Small School Division, Section 3A South-Sub Section and Section 3A team championships as the season progressed.

LHS also turned in a pair of all-state performances at the Minnesota State Class A Track and Field Championships in June.

The 3,200-meter relay consisting of Brooklyn Ver Steeg, Regan Feit, Gabrielle Ferrell and Jady Anderson placed sixth, while Ver Steeg, Feit, Autumn Nath and Anderson finished ninth in the 1,600-meter relay.

The LHS boys also won the sub-section team title and placed third at the section meet, where three

FROM THE SIDELINES

By John Rittenhouse, sports editor

athletes qualified for the state meet individually.

Senior Logan Stratton placed fourth in the shot put and classmate Matt Hup finished fifth in the pole vault at state, completing their high school careers with all-state performances.

H-BC senior Zach Scholten and junior Kourtney Rozeboom advanced to the state meet as well.

Scholten finished 11th in the high jump, while Rozeboom turned in an all-state effort by placing fifth in the shot put.

No. 3: LHS, AHS CC

The prowess of the Luverne girls' cross country team proved to be the top story of the fall sports season.

The Cardinals won their third consecutive BSC Small School Division and Section 3A titles before turning in a sixth-place finish at the Minnesota State Class A Cross Country Championships in Northfield.

Along with the team success, eighth-grader Tenley Nelson and freshman Regan Feit excelled individually.

Nelson emerged as a state medalist by placing fifth in Northfield, while Feit earned all-state status for the second consecutive year by placing 15th overall.

Adrian senior Brady Henning earned a trip to the state meet individually.

Henning placed 61st at the state classic.

No. 2: VFW baseball

The summer of 2017 was a special one for the Luverne VFW baseball team.

The Cardinals repeated as Third District champions before turning in the best performance in program history by placing third at the Minnesota State VFW Baseball Tournament in

Willmar.

Luverne posted wins over Duluth East (2-1), Rochester (8-6) and New Ulm (9-7) at the state event.

Woodbury saddled the Cardinals with both of their losses (3-2 and 5-1) at the double-elimination tourney, which wrapped up a 17-5 season for Luverne.

No. 1: LHS, AHS wrestling

The end of a remarkable high school career for LHS senior Solomon Nielsen earns the top spot on my list in 2017.

Nielsen became the all-time wins leader (144) in the history of the LHS program during the course of a season that included him winning the Section 3AA championship at 170 pounds.

Nielsen went on to win his first three matches at the Minnesota State Class AA Wrestling Championships in St. Paul before losing in the finals to complete a 37-1 season.

Nielsen, who placed second twice in state tournament competition and placed fourth once, is the only Cardinal wrestler to place more than once at state meets in program history.

Eighth-grader Hunter Baker and sophomore Zach Luke qualified for the state tournament as section runners-up, giving LHS its most state representation since the 2000 season.

Baker went 0-2 at state to complete a 28-12 season, while Luke went 0-2 to finish a 15-15 campaign.

Adrian's Dylan Gyberg repeated as the Section 3A 195-pound champion to advance to the Class A state tournament.

Gyberg lost both of his state matches to cap a 19-6 season.



John Rittenhouse photo/1228 lbh 9

Luverne senior forward Coy Gonnerman redirects a shot taken by a teammate near the Worthington net during Thursday's 8-0 home victory over the Trojans.

Fall/continued from page 2B

lead 1:08 into the second period before Windom's Mikal Anderson knotted the score at the 12:44 mark.

Kruse broke the tie with 11:01 left in the stanza and the score was 3-1 when Ben Serie added a goal with 7:28 remaining.

Four unanswered goals by LHS in the third period iced the victory.

Harder scored 11 seconds into the period before Kruse capped his hat trick with 12:47

remaining.

Mark Sterrett netted a power-play tally at 8:56 and Trey Roberts completed the scoring with a goal that came with 2:11 left to play.

Tofteland stopped 19 of the 20 shots he faced in goal before giving way to Max Skattum, who registered six saves.

Serie added two assists to the winning cause, while Harder, Kruse, Trey Roberts and Nath chipped in one each.



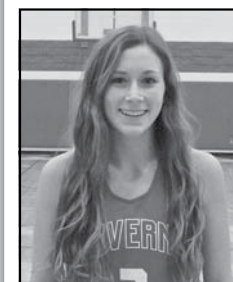
Mark Robinson

Sport: Basketball
Position: Point Guard
Parents: Wayne & Ann Robinson
Favorite Subject: Math
Extra Curricular Activities: Basketball, tennis, band, choir, student council, National Honor Society
Future Plans: Pursue a career in statistics or secondary math education.



Sierra Schmuck

Sport: Basketball
Position: Guard
Parents: Cory Schmuck & JoDee Haubrich
Favorite Subject: Psychology
Extra Curricular Activities: Basketball, volleyball, track, peer helping, choir, National Honor Society, student council, peer tutoring, yearbook
Future Plans: Go to college



Cade Ver Steeg

Sport: Hockey
Position: Defense
Parents: Tom & Allison Ver Steeg
Favorite Subject: Foods class
Extra Curricular Activities: Football, hockey, tennis, BPA, American Reformed Church RCYF
Future Plans: To go to Bemidji State for business.



Pipestone Pepsi | 1809 Forman Drive, Pipestone, MN 56164

alzheimer's association



MEETING OF THE MINDS 3.3.18 St. Paul RiverCentre DEMENTIA CONFERENCE

alz.org/minds 800.272.3900

Ice Fishing

Ballard's Resort on Minnesota's Lake of the Woods offers cabins, fish houses, meals, beverages the works.

Book your winter ice fishing adventure now... SAVE \$100 or MORE per person!

Call and ask about the "Winter Fishing Specials".

1-800-776-2675 FishBallards.com

Post/continued from page 2B

put together an 11-4 run to gain an 11-8 lead when Mark Robinson drilled a three-point shot at 13:59 of the first half.

Edgerton battled back to knot the score at 11, but the Cards countered with a 23-12 run capped by Isaiah Bartels sinking one free throw to make it a 34-23 game with 2:50 remaining in the opening stanza.

Both teams scored two points in the final minutes of a second half that ended with the Cards sporting a 36-25 advantage.

The second half belonged to LHS, which outscored Edgerton 39-19 to win handily.

Luverne scored the first six points of the second stanza as a part of a 9-2 surge ending with a three-point shot by Derek Lundgren that upped the lead to 45-27.

The Flying Dutchmen trimmed the difference to 14 points (45-31) with 10:46 left to play, but that proved to be as close as the Flying Dutchmen would come to catching the Cards.

An 18-3 run ending with Mikel Terry draining a pair of free throws at the 5:24 mark gave LHS a 63-34 advantage.

The Cardinals led by as many as 34 points in the final minutes of the contest before settling with a 31-point victory at game's end.

Lundgren (18 points, six rebounds and six steals) and Brayden Jacobsma (16 points and six steals) led the Cardinals statistically.

Cole Claussen pulled down eight rebounds and recorded five steals for the winners.

Box score
Robinson 1 2 0-0 8, Cowell 0 0 2-2 2, Lundgren 6 2 0-0 18, Sehr 0 0 1-2 1, Bartels 2 0 1-2 5, Claussen 2 0 2-2 6, Terry 1 0 2-2 4, Jacobsma 5 2 0-0 16, Golla 1 0 0-0 2, Bierman 1 1 0-0 5, Pradana 0 0 0-0 0, Haugom 4 0 0-0 8.



John Rittenhouse photo/1228 lbb 9

Luverne junior Brayden Jacobsma releases a one-handed shot in front of Edgerton's Marcus Vander Lugt during Friday's boys' basketball game in Luverne. Jacobsma netted 16 points during a 75-44 win. The victory was Luverne's second conquest of the 2017-18 season.

Team statistics
Luverne: 30 of 71 field goals (42 percent), 10 of 12 free throws (83 percent), 26 rebounds, 11 turnovers.
Edgerton: 16 of 47 field goals (34 percent), five of 11 free throws (45 percent).

JCC 72, Luverne 44

The Cardinals lost their third consecutive Big South Conference game when they squared off against the Huskies in Jackson Thursday. JCC gained some separation in the first 18 minutes of play

by sporting a 33-23 advantage at the intermission. The Huskies went on to outscore the Cardinals 39-21 in the second half to prevail by 28 points at game's end. Claussen led the Cardinals

with nine points.

Box score
Robinson 0 0 2-2 2, Cowell 0 0 0-0 0, Lundgren 1 1 2-4 7, Sehr 0 0 0-0 0, Bartels 3 0 1-1 7, Claussen 4 0 1-1 9, Terry 2 0 0-0 4, Jacobsma 2 0 4-5 8, Stemper 0 0 0-0 2, Golla 0 0 0-0 0.

Bierman 0 1 0-0 3, Pradana 0 0 0-0 0, Haugom 2 0 0-0 4.

Team statistics
Luverne: 16 of 41 field goals (39 percent), 10 of 15 free throws (67 percent).
JCC: 28 of 40 field goals (70 percent), four of 11 free throws (36 percent).



John Rittenhouse photo/1228 lgh 9

Luverne freshman forward Rylee Gee lifts a shot over the stick of Worthington's McKenna Nickel during Thursday's Big South Conference hockey game at the Blue Mound Ice Arena. LHS skated to an 8-0 win.

LHS/continued from page 2B

advantage in shots on goal during the game.

The Cards got off to a good start by netting four first-period goals.

Bork opened the scoring with an unassisted tally 7:03 into the game before making it 2-0 with a power-play goal 1:46 later.

Van Batavia and Kracht scored their first goals of the contest 15 seconds apart to give the Cards a 4-0 cushion they would take into the second period.

Bork completed her hat trick 3:13 into the second period to ignite a three-goal stanza that left the Cards

sporting a 7-0 lead.

Van Batavia netted a power-play goal at the 8:39 mark of the period before Henrichs added a tally with 1:15 remaining in the stanza.

Kracht netted the final goal of the game with 3:22 remaining in the third period. Van Batavia finished the game with five assists, while Rozilyn Oye charted two assists.

Kracht and Bork added one assist each to the cause.

LHS 3, Windom 2

The Cardinals registered the final two goals of the game to register an overtime victory over the Eagles Dec. 19 in Luverne.

Trailing 2-1 with 7:17 remaining in regulation play, the Cards met the challenge by netting the tying goal with 5:07 left in the third period before

settling the issue with a goal 4:42 into overtime.

Van Batavia's second goal of the game knotted the score at two at the 5:07 mark of the third period.

Bork, who received an assist for Van Batavia's tying goal, produced the game-winner after taking a pass from Oye with 3:18 left in overtime.

An unassisted goal from Van Batavia gave LHS a 1-0 lead 2:39 into the second period that was erased when Windom scored twice in the first 9:43 in the third period.

Jolyssa Higley-Purinton tied the score with a power-play goal 5:39 into the stanza before Molly Boyum gave the Eagles a 2-1 edge with 7:17 left in the final period.

Bartels made 22 saves for an LHS squad that outshot Windom 29-24 in the game.

MERRY Christmas

The Star Herald is offering new customers* a year's subscription at a special holiday price of \$50 for in county and \$65 for out of county.

offer valid 12/7/17-12/29/17

subject to approval

Rock County STAR HERALD



507-283-2333 | circulation@star-herald.com | 117 W Main, Luverne, MN 56156

Rock County EYE CLINIC
507-283-2345
104 N. Freeman Ave.
Luverne, Minnesota
www.rockcountyeyeclinic.com

50% off frame with purchase of lenses
Jan. 2 - Jan. 31, 2018

LIKE US ON facebook

Ring in the New Year and join us for our **Grand Opening**

JANUARY 5
Ribbon Cutting 11:30 a.m.
Open House 11:30-3:00

Rock County Eye Clinic, locally owned, community involved, clearly different.

DECEMBER 19 SPORTS REPLAY

Adrian girls rally past Raiders

The Adrian girls' basketball team notched its third win of the season by securing a 47-45 victory in Fulda.

Adrian faced a 29-20 victory at halftime, but the Dragons rallied to outscore the Raiders 27-16 in the second half to prevail by two points.

Paige Bullerman (12 points and 14 rebounds), Moriah Bullerman (five rebounds and four assists), Avery Balster (five rebounds and four assists), Lexi Slater (11 rebounds) and Kaitlyn Christians (three assists) played well in victory for AHS.

Patriots roll to home win over Ellsworth

The Hills-Beaver Creek girls' basketball team notched its fourth consecutive win by upending Ellsworth 69-31 in Hills.

The Patriots opened a 37-13 halftime lead and outscored the Panthers 32-18 in the second half to complete a 38-point conquest.

Sidney Fick (21 points and six rebounds), Grace Bundesen (14 points and six rebounds), Kourtney Rozeboom (12 points and five rebounds), Abby Knobloch (four steals) and Paige Tilstra (three assists) played well for H-BC.

Ashlyn Meester turned in a 10-point, five-rebounds effort for the Panthers, who received six rebounds from Devin Dreesen.

Lancers stroll to big win over AHS

The Adrian wrestling team's record dipped to 1-3 for the season after dropping a 62-8 home match to Canby.

The Lancers drew two forfeits and won 10 of the 12 matches staged on the mat during their 54-point victory.

Adrian received major decisions from Logan Taylor (11-1 over Tanner Drietz) and Isaac Bullerman (14-3 over Lincoln Fink).

Eagles overwhelm Ellsworth's boys

The Southwest Christian boys' basketball team coasted to a 79-28 home win over Ellsworth.

The Eagles led 39-18 after 18 minutes of play and used a 40-10 scoring cushion in the second half to complete a 51-point conquest.

Brandon Kramer (nine points and five rebounds), Carter Boyenga (seven rebounds), Zach Buntjer (five rebounds) and Sean Boltjes (three steals) led EHS statistically.

Third/continued from page 3B

points for Adrian.

Box score
Weidert 1 1 0-0 5, John 0 0 0-0 0, Wieneke 6 7 4-4 37, Ross 0 0 0-0 0, Henning 1 3 0-0 11, Veld 1 0 0-0 2, Poizine 1 0 0-0 2, Lueltel 2 0 0-0 4.

Team statistics
Adrian: 23 of 44 field goals (52 percent), four of four free throws (100 percent), 26 rebounds, nine turnovers.
RRC: 23 of 60 field goals (38 percent), 12 of 15 free throws (80 percent), 24 rebounds, three turnovers.

Adrian girls cap field at RRC tournament

By John Rittenhouse

The Adrian girls' basketball team dropped a pair of games at the Red Rock Central Holiday Tournament in Lambertton late last week.

Wabasso saddled the Dragons with a 22-point setback in Thursday's opening round. The hosts school topped AHS by 19 points in Friday's third-place game.

Adrian, 3-6 overall, returns to action Jan. 4 when it hosts Southwest Christian.

RRC 51, Adrian 32

A cold shooting night plagued the Dragons during Friday's third-place game against RRC in Lambertton.

AHS was limited to 20 percent shooting from the field and was outscored on both halves of a 19-point setback.

RRC opened an 11-point (27-16) lead over the Dragons in the first half before outscoring the Dragons 24-16 in the second half to win handily.

Lexi Slater turned in a 10-point, 11-rebound effort for Adrian.

Paige Bullerman (16 rebounds), Bailey Lonnenman (six rebounds) and Alexia Kemper (five rebounds and three assists) also played productive games for the Dragons.

Box score
Kemper 0 0 1-2 1, B.Zebe 1 0 0-0 2,

M.Bullerman 1 0 0-0 2, Balster 0 0 0-0 0, Nelson 0 0 0-0 0, Christians 1 0 0-0 2, B.Lonnenman 1 0 2-2 4, Grussing 0 0 0-0 0, Rogers 0 0 2-2 2, Slater 5 0 0-0 10, P.Bullerman 4 0 1-2 9.

Team statistics
Adrian: 13 of 61 field goals (20 percent), six of eight free throws (75 percent), 50 rebounds, 17 turnovers.
RRC: 21 of 61 field goals (34 percent), one of five free throws (20 percent), 36 rebounds, 10 turnovers.

Wabasso 70, AHS 48

The Dragons were sent to the third-place game of the RRC Holiday Tournament when they lost a 22-point decision to the Rabbits during Thursday's opening round in Lambertton.

Wabasso got off to a good start by opening a 31-19 lead over AHS in the first half.

When the Rabbits outscored the Dragons 39-29 in the second half, their 22-point victory was complete.

Slater led Adrian in scoring with 12 points.

Paige Bullerman, Kaitlyn Christians and Lonnenman grabbed eight, seven and five rebounds respectively for AHS.

Moriah Bullerman notched five assists for the Dragons.

Box score
Kemper 1 0 6-9 8, M.Bullerman 1 1 1-3 6, Balster 0 0 1-2 1, Nelson 0 0 0-0 0, Christians 3 1 0-0 9, B.Lonnenman 2 0 1-1 5, Rogers 0 0 0-0 0, Slater 4 0 4-6 12, P.Bullerman 3 0 1-1 7.

Team statistics
Adrian: 16 of 44 field goals (36 percent), 14 of 22 free throws (64 percent), 33 rebounds, 36 turnovers.
Wabasso: 25 of 71 field goals (35 percent), 14 of 25 free throws (56 percent), 40 rebounds, 16 turnovers.



John Rittenhouse photo/1228 lgb 6

Luverne senior Rachel Oftedahl pulls an offensive rebound away from Pipestone's Zoe Velde during the Dec. 19 game in Luverne. Oftedahl scored six points during a 65-52 loss. The Cardinals also lost a game in Jackson Thursday.

Arrows, Huskies best Luverne girls in BSC play

By John Rittenhouse

The Luverne girls' basketball team slipped to 1-2 in Big South Conference play after taking a pair of league losses last week.

The Cardinals came up on the short end of a 13-point decision against Pipestone in Luverne Dec. 19. LHS lost by 18 points Thursday in Jackson.

Luverne, 4-4 overall, plays in Marshall Jan. 2.

JCC 68, Luverne 50

Luverne completed play in 2017 by taking an 18-point setback from the Huskies in Jackson Thursday.

JCC outscored the Cardinals in both halves of the game to win the contest handily.

The Huskies controlled the contest by opening a 35-21 lead in the first half.

JCC completed its conquest by sporting a 33-29 scoring edge in the second half.

Joci Oye pumped in 21 points to lead the Cardinals in scoring.

Rachel Oftedahl, Mackenzie Petersen and Gabrielle Ferrell collected five rebounds each, while Brooklynn Ver Steeg charted three steals.

Box score
Schmuck 2 0 1-2 5, Ver Steeg 2 0 5-8



John Rittenhouse photo/1228 lgb 5

Luverne sophomore Mallory Thorson scored six points during a 65-52 home loss to the Pipestone Arrows Dec. 19.

Oye 9 1 0-0 21, Anderson 2 0 2-2 6, Oftedahl 0 0 0-0 0, Petersen 2 0 5-6 9, Ferrell 0 0 0-0 0.

Team statistics
Luverne: 18 of 44 field goals (41 percent), 13 of 18 free throws (72 percent), 36 rebounds, 19 turnovers.
JCC: 26 of 46 field goals (57 percent), 10 of 16 free throws (63 percent), 32 rebounds 20 turnovers.

Pipestone 65, LHS 52

The Cardinals took their first BSC loss of the season when they took on the Arrows in Luverne Dec. 19.

LHS remained in contention most of the night, but they

couldn't overcome a pair of big runs put together by Pipestone during the game.

The score was knotted at four early in the first half when the Arrows went on a 17-2 run to open a 21-6 lead at the 9:49 mark.

Luverne closed the gap to nine points (25-17) when Gabrielle Ferrell copped a three-point shot before Oye drilled four consecutive three-pointers to trim the difference to two points (30-28) with 2:38 remaining.

LHS still trailed by two before Pipestone drained a three-point shot before the buzzer sounded to make it a 38-33 game at the break.

A field goal from Luverne's Oftedahl 2:29 into the second half closed the margin to four points (40-36), but the Arrows countered with a 12-0 run to up the lead to 16 points (52-36) with 10:53 remaining.

Luverne did get to within six points (54-48) when Oye sank her fifth three-point shot of the game with 3:58 left to play. The Arrows, however, outscored the Cards 8-4 the rest of the night to win by 13 points.

Oye (15 points), Ferrell (11 points and three assists) and Sierra Schmuck (11 points) led the Cards offensively.

Mallory Thorson collected seven rebounds, while Jaydn Anderson chipped in three assists.

Box score
Schmuck 4 1 0-1 11, Oye 0 5 0-0 15, Anderson 1 0 0-0 2, Thorson 1 1 1-2 6, Oftedahl 3 0 0-0 6, Sweeney 0 0 0-0 0, Petersen 0 0 1-2 1, Ferrell 2 2 1-5 11.

Team statistics
Luverne: 20 of 44 field goals (45 percent), three of 10 free throws (30 percent), 25 rebounds, nine turnovers.
Pipestone: 21 of 47 field goals (45 percent), 16 of 26 free throws (62 percent), 30 rebounds, three turnovers.

Dutchmen rough up EHS

By John Rittenhouse

The Ellsworth girls' basketball team completed play in 2017 by losing a home game to Edgerton Thursday.

The Panthers had an opportunity to finish the year above .500 in the Red Rock Conference, but the Flying Dutchmen didn't let it happen.

Edgerton outscored the Panthers in both halves of a 60-40 victory.

The Flying Dutchmen gained control of the contest by doubling Ellsworth's scoring output (36-18) in the first half.

Edgerton turned a 24-22 scoring edge in the second half into a 20-point win.

Devin Dreesen (18 points and five rebounds) and Ashlyn Meester (17 points and five rebounds) accounted for 35 of Ellsworth's 40 points.

Lizzie Chapa and Morgan Dreesen led EHS with seven rebounds, while Kallie Chapa charted three steals.

Ellsworth, 3-5 overall and 3-4 in the league, returns to action Jan. 2 when it hosts Hendricks.

Box score
Meester 3 2 5-6 17, K.Chapa 0 0 0-1 0, L.Chapa 2 0 1-4 5, D.Dreesen 3 4 0-2 18, M.Dreesen 0 0 0-0 0, Domeyer 0 0 0-0 0.

Team statistics
Ellsworth: 14 of 50 field goals (28 percent), six of 13 free throws (46 percent), 28 rebounds, 15 turnovers.

BSC STANDINGS

BSC girls' hockey		Marshall	
New Ulm	8-0	Waseca	4-3
Luverne	5-3-1	RWV	2-5
Marshall	4-3	Windom	2-5
Minnesota River	4-4	Fairmont	1-6
Waseca	3-3	Worthington	0-8
Worthington	3-5		
Windom	2-4-1		
Fairmont	0-7		
BSC boys' hockey		BSC West boys' hoops	
Luverne	7-0	Marshall	3-0
New Ulm	4-0	Windom	3-1
Minnesota River	5-1	JCC	2-1
		Pipestone	1-1
		RWV	1-2
		Worthington	1-3

dining & entertainment

Ring in the New Year with Chase & Ovation

A SALUTE TO THE MUSIC OF PRINCE

SATURDAY
DECEMBER 30 • 8 P.M.
TICKETS \$30

PALACE THEATRE UPCOMING EVENTS

December 29 • 7 p.m., December 31 • 2 p.m., January 1 • 2 p.m.
Movie - "Wonder"

January 4 (Thursday) • 6 p.m.
Bank Nite FREE Family Movie - "Leap"
(Sponsored by Papik Motors and First Farmers & Merchants Bank)

February 3 • 8 p.m.
Comedy Hypnotist, Steve Meade

Tickets for season members and business underwriters go on sale Jan. 2, public sale is Jan. 9

PALACE THEATRE
104 E. MAIN ST. • PO BOX 541 • LUVERNE, MN 56156
507.283.4339 • WWW.PALACETHEATRE.US

Find us on Facebook

Box office is open Monday - Friday noon to 5 p.m.
104 E Main Luverne MN • 507-283-4339

Hangover Brunch

MONDAY • JANUARY 1
10 A.M. - 2 P.M.

\$10.95

Breakfast Items
Ham, Roast Beef, Potatoes and More

Bloody Mary Bar Available

ULGY SWEATER CONTEST
FRIDAY DECEMBER 29 AT 9 P.M.

FREE JUKE BOX EVERY FRIDAY NIGHT

GREEN HANDBY CAFE & BAR
HARDWICK, MN
507-669-2246

Happy Holidays

from all of us at All About Travel!

Karen Andrea
Ashley Lorie
Jennifer Brittany
Rosa Justine
Jodi Paula
Heather Jamie
Paige Sonya
Sarah Melanie

ALL ABOUT TRAVEL INC.
10-Year Winner! Layaway & Gift Certificates Available!
605-339-8911 • 1-800-390-6610
3801 S. Western Ave., Suite 103, Sioux Falls, SD
Open: Mon.-Fri. 8 a.m. - 7 p.m. • Saturday 9 a.m.-1 p.m.
www.AllAboutTravel.org • www.facebook.com/AllAboutTravelInc
Helping You Find Your Personal Paradise!

UP THE DAM CREEK

OPEN NEW YEAR'S EVE

In the Wind Karaoke

DEC 31 • 9pm - 1am

SPONSORED BY FIRE RELIEF ASSOCIATION

Downtown Beaver Creek • 507-673-2528
3-7 Mon-Thurs • 10am - 1am Fri & Sat

Star Herald CHURCH

Page 6B December 28, 2017

St. Catherine Catholic Church
203 E. Brown St., Luverne
St. Catherine Ph.: 283-8502; email: stcatherine@iw.net
St. Mary Catholic Church, Ellsworth
Saturday, Dec. 29: 5:30 p.m. Mass at St. Catherine. Sunday, Dec. 31: 8:30 a.m. Mass at St. Mary. 10:30 a.m. Mass at St. Catherine. 1:30 p.m. Mass at Mary Jane Brown Home. 2:15 p.m. Mass at Poplar Creek. Monday, Jan. 1: 8:30 a.m. Mass at St. Mary. 10:30 a.m. Mass at St. Catherine.

Luverne Christian Reformed Church
605 N. Estey St., Luverne
Office Ph. 283-8482; Prayer Line Ph. 449-5982
www.luverncrc.com — sparksr@iw.net
Roger Sparks, Pastor

First Baptist Church
1033 N. Jackson St., P.O. Box 975, Luverne
Ph. 283-4091; email: fbcluv@iw.net — www.fbcluverne.org
Walt Moser, Pastor
Thursday, Dec. 28: 7 p.m. Worship service on Channel 3. Sunday, Dec. 31: 9:15 Sunday School. 10:30 a.m. Morning Service. No Evening Service. Tuesday, Jan. 2: 7 a.m. Men's Bible Study. Wednesday, Jan. 3: 6:30 p.m. Awana. Thursday, Jan. 4: 6 a.m. Men's Bible Study. 7 p.m. Worship service on Channel 3.

Grace Lutheran Church
500 N. Kniss Ave., Luverne
Ph. 507-283-4431; www.graceluverne.org — graceluverne@iw.net
Ron Nichols, Pastor; Stephen Hilding, Associate Pastor
Thursday, Dec. 28: 9:30 a.m. Rachel Circle in Fireside Room. Noon Sarah Circle at Camelot. 7 p.m. Priscilla/Esther Circle at Helen Laabs. Friday, Dec. 29: 6:30 p.m. Worship on Channel 3. Saturday, Dec. 30: 5:30 p.m. Worship with Communion. Sunday, Dec. 31: 8:15 a.m. Radio broadcast. 9 a.m. Worship. 10 a.m. Fellowship Coffee. No Sunday School. Monday, Jan. 1: Church office closed. 4:30 p.m. Worship on Channel 3. Tuesday, Jan. 2: 9 a.m. Staff meeting. Wednesday, Jan. 3: 7 a.m. Men's Bible Study. 10 a.m. Worship at Tuff Home. 3:15 p.m. Faithweavers. 5:30 p.m. Youth Supper. 6 p.m. Woven Worship. 7 p.m. Grades 6-9 Confirmation/Mentor night. 7 p.m. Chancel Choir rehearsal. Thursday, Jan. 4: 8:30 a.m. MIA.

Bethany Lutheran Church
720 N. Kniss Ave., Luverne
Ph. 507-283-4571 or 507-449-0291 or 605-215-9834
pastorapalmquist67@yahoo.com
Andrew Palmquist, Pastor
Sunday, Dec. 31: No Sunday School or Bible Class. 10:15 a.m. Worship with Communion.

American Reformed Church
304 N. Fairview Dr., Luverne
Ph. 283-8600; email: office@arcluverne.org
Mike Altena, Pastor
Thursday, Dec. 28: 5:30 p.m. Tumbling Tikes. Friday, Dec. 29: 6:30 a.m. Community Men's Bible Study. 4 p.m. REFIT Fitness Class. Saturday, Dec. 30: Noon Fellowship Hall reserved. Sunday, Dec. 31: 9:30 a.m. Worship Service. No Sunday School.

First Assembly of God Church
1075 110th Ave., 2 miles west of Luverne on County Rd. 4
Sundays: 9 a.m. Sunday School. 10 a.m. Morning Worship. 6:30 p.m. School of the Holy Spirit. Wednesdays: 7 p.m. Kids Connection; Men's Bible Study with Pastor Ken; Women's Bible Study with Pastor Gloria.

United Methodist Church
109 N. Freeman Ave., Luverne
Ph. 283-4529; email: luverneumc@iw.net
Dorie Hall, Pastor
Thursday, Dec. 28: 1-3 p.m. Rock County Food Shelf. Saturday, Dec. 30: 8 p.m. AA Meeting. Sunday, Dec. 31: 9 a.m. Traditional Service. 10 a.m. Coffee Hour and Adult Sunday School. 11 a.m. Come as You Are Service. 4:30 p.m. Genesis/Revelation Bible Study. NO ALIVE Youth Group. Monday, Jan. 1: 8 p.m. AA Meeting. Wednesday, Jan. 3: 1-3 p.m. Sewing Day. 8 p.m. AA Meeting. Thursday, Jan. 4: 1-3 p.m. Rock County Food Shelf.

First Presbyterian Church
302 Central Lane, Luverne
Ph. 283-4787; email: Firstpc@iw.net — www.fpcluverne.com
Thursday, Dec. 28: 10 a.m. Worship service on Channel 3. Sunday, Dec. 31: 10:15 a.m. Worship.

Hills United Reformed Church
410 S. Central Ave., Hills
Office Ph. 962-3254
hillsurc@alliancecom.net
Alan Camarigg, Pastor
Sundays: 9:30 a.m. and 6 p.m. Worship Services.

St. John Lutheran Church
803 N. Cedar St., Luverne
Ph. 283-2316, Dial-A-Devotion Ph. 283-4005
email: stjoh@iw.net — www.stjohnlutheranluverne.org
Gary Klatt, Pastor

Thursday, Dec. 28: 11:30 a.m. Devotions at Mary Jane Brown Home with Jessica. Friday, Dec. 29: No Little Lambs classes. Saturday, Dec. 30: 5:30 p.m. Worship. Sunday, Dec. 31: 9 a.m. Worship. No Christian Education Hour. No New Year's Eve Worship. Monday, Jan. 1: Church office closed. No Little Lambs Monday or Tuesday, Jan. 1-2. Tuesday, Jan. 2: 1 p.m. and 6:30 p.m. Quilting. 6 p.m. Take down Christmas decorations. 7 p.m. Elders meeting. Wednesday, Jan. 3: 9 a.m. and 1 p.m. Little Lambs devotions. 9:30 a.m. Bible Study. 6 p.m. Youth supper. 6:30 p.m. Catechism. 7 p.m. KFC; High School Bible Study; Senior Choir. 8 p.m. Kingdom Builders. Thursday, Jan. 4: 9 a.m. Little Lambs Devotions. 2 p.m. Women's Society.

Living Rock Church
500 E. Main St., Luverne
Ph. 449-0057; www.livingrockswmn.org
Billy Skaggs, Pastor
Sundays: 10:30 a.m. Worship; Kids Rock Children's Ministry. 6 p.m. Youth Ministry. Life groups meet throughout the week.

New Life Celebration Church
110 N. Oakley, Luverne
Ph. 449-6522; email: newlifecelebration@gmail.com
Sundays: 9:30 a.m. Worship at 110 N. Oakley. Every third Thursday: 5 p.m. Food give-away at Senior Citizens Center. Bible Study groups meet at various times and days.

Zion Evangelical Lutheran Church
305 E. 2nd St., P.O. Box 36, Hardwick
Ph. 669-2855; email: www.zionlutheranhardwick.com
Thursday, Dec. 28: 3:30 p.m. Worship service on Channel 3. Friday, Dec. 29: 3:30 p.m. Worship service on Channel 3. Sunday, Dec. 31: 9 a.m. Sunday School and Adult Bible Study. 10 a.m. Mentor Program. 10:30 a.m. Worship Service. Thursday, Jan. 4: Worship service on Channel 3.

Ben Clare United Methodist Church
26762 Ben Clare Ave., Valley Springs, S.D.
igtwlb@WOW.net
Bill Bates, Pastor
Sundays: 9 a.m. Worship; 10 a.m. Fellowship; 10:30 a.m. Sunday School for all ages.

First Lutheran Church
300 Maple St., Valley Springs, S.D.
Ph. (605) 757-6662
Intern Pastor Laura Phillips
Sunday, Dec. 31: 10:30 a.m. Morning worship. Wednesday, Jan. 3: 7 p.m. Confirmation

Palisade Lutheran Church
211 121st St., Garretson, S.D.
Ph. (507) 597-6257 — firstpalisade@alliancecom.net
Intern Pastor Laura Phillips
Sunday, Dec. 31: 9 a.m. Morning worship. Wednesday, Jan. 3: 7 p.m. Confirmation at First Lutheran.

First Presbyterian Church
201 S. 3rd St., P.O. Box 73, Beaver Creek
Ph. 507-935-5025
Email: lori.firstpres@gmail.com
Worship Leader Michael Blank
Sundays: 9:30 a.m. Morning Worship. 10:30 a.m. Sunday School.

Magnolia United Methodist Church
501 E. Luverne St., Magnolia
Church Ph. 507-483-2492; cell 227-7821; email: adrmagumc@gmail.com
www.facebook.com/adrianmagnoliaumc
Kristi Franken, Pastor
Sunday, Dec. 31: 9 a.m. Magnolia Worship Service. Wednesdays: 6:30 p.m. Confirmation at Magnolia UMC.

Bethlehem Lutheran Church
Pastor Maggie Berndt-Dreyer
112 N. Main St., Hills
Ph. 962-3270
e-mail: bethlehemiuth@alliancecom.net
Sunday, Dec. 31: 9 a.m. Worship at Tuff Chapel. No Sunday School. 10:30 a.m. Communion at Bethlehem. Youth lock-in for Grades 6-8. Tuesday, Jan. 2: 2:30 p.m. Bible Study at Tuff Home. 3:15 p.m. Bible Study at Village. Wednesday, Jan. 3: 9 a.m. Quilting. 6:30 p.m. Grades 8-9 Confirmation. 7 p.m. Budget Meeting.

Dislike Christmas?

I bet you are wondering how a pastor could possibly dislike Christmas, right?

Actually, Christmas is my favorite time of year. I just wrote that title to get your attention. If you are reading this, then apparently it worked.

In all seriousness, however, we often find many reasons to get extremely annoyed and anxious around Christmas. Plenty of statistics can be found to show how much depression increases and health problems pop up around this time of year. Of course the latter issue might have something to do with the copious amounts of food we eat.

Here is a trick to help you have a great Christmas. It's very simple to understand, but not easy to do. Allow Christmas to be unique.

Don't expect it to be like last year, or 10 years ago, or way back when you were a kid. Don't measure this Christmas based on traditions or expectations regarding the good parts of the holidays in the past, or fears or anxieties about bad things that have happened. Let's get more specific:

- Worried about rehashing old arguments with the family? Maybe this year everything will be fine.
- Don't put undue pressure on yourself to achieve every decoration, special food item, or other tradition everyone expects of you. If your brother-in-law complains about no pumpkin pie, send him to Teal's.
- Stressed about buying presents for everyone? Give them gift cards.
- Missing someone who passed away or can't make it this year? Share some funny Christmas memories in honor of him/her.
- Worried your church will introduce too many new Christmas songs

BUILT ON A ROCK

By Cory Grimm, Pastor of Worship and Spiritual Formation, American Reformed Church, Luverne

and neglect your favorite carols? Just be glad the younger generations are celebrating Christmas in their own musical language. (That one has a personal story behind it as you might have guessed!)

Remember in the movie "The Christmas Story" how the family made great preparations for their family celebration, including a beautifully cooked turkey? Then a pack of dogs came running through the house and destroyed their meal. They could have gotten discouraged and given up, but instead they ate at the local Chinese restaurant, probably the only place that was open, and made some new friends with the staff there. The group even sang Christmas carols together.

Wouldn't it be great if we could just let Christmas be a new, unique experience? Every year I pray that God will speak to me personally and to our church and help us encounter the Christmas story in some new, fresh way. Most of us have heard all about the shepherds, wise men, Joseph, Mary, and baby Jesus. It never ceases to amaze me, however, that some new detail or perspective will pop up each year and help Emmanuel come into our world all over again. May the same be true for each of our lives this year. Instead of thinking of all the reasons Christmas gets us down or falls short of the past, let's let Christmas be unique and inspire us in ways we didn't see coming.

Steen Reformed Church
112 W. Church Ave., Steen
Ph. 855-2336

Jeremy Wiersema, Pastor
Sundays: 9:30 a.m. Worship; service broadcast on KQAD. 10:45 a.m. Sunday School. 6 p.m. Youth Group. Evening worship at 6 p.m. first and third Sundays. Wednesdays: 7 p.m. Midweek.

These Weekly Church Page Messages are contributed to God's Work through the Church and by these concerned and responsible citizens & businesses:

Call Rick or Chantel to place your ad!

283-2333

Tuff Memorial Home, Retirement Apartments & Tuff Village
"A Home Where Residents SMILE"
Hills, Minnesota
Phone 507-962-3275

Papik Motors
LUVERNE, MINN.
I-90 in Luverne, MN
507-283-9171 • 1-800-634-7701

Read us online!

Rock County
STAR HERALD
www.Star-Herald.com

Trust In Him



Pizza Ranch
110 E. Main, Luverne, MN
Phone 507-283-2379

MANLEY
TIRE & OIL SERVICE
Manley Minnesota
1-800-615-3704
Open six days a week - Closed on Sundays
To God be the Glory.

CWG
Business Insurance.
Tri-State Region Period!

Rock County
STAR HERALD
Luverne, MN • 507-283-2333

Advertise Here

Luverne
ANNOUNCER

To Advertise Call
283-2333

Buffalo Ridge INSURANCE
507-283-2381 www.buffaloridgeins.com E-mail: info@buffaloridgeins.com

McClure Electric
Alan M. Aanenson, owner
Farm, Home & Commercial Wiring
Luverne, MN Phone 507-283-4716

First Farmers & Merchants
303 E. Main, Luverne, MN
507-283-4463
www.fimbank.com
We believe in you.™
Member FDIC. And the community.

HILLS STAINLESS STEEL & EQUIPMENT CO., INC.
506 W. Koehn, P.O. Box 987, Luverne, MN
PHONE 507-283-4405
Church is Important - Please Attend!

MINNWEST BANK
• 116 E. Main St., Luverne 507-283-2366
• S. Hwy. 75, Luverne 507-283-9131
• Main St., Beaver Creek 507-473-2333
Member FDIC www.minnwestbank.com

HARTQUIST
Funeral and Cremation Services
- ENGBRETSON CHAPEL -
507-283-2777
www.HartquistFuneral.com
"Let our family help your family"
Serving the Luverne and Surrounding Communities

Tollefson Publishing
117 W. Main
Luverne, MN 56156
507-283-2333

Mortgage foreclosure sale set for Jan. 4

NOTICE OF MORTGAGE FORECLOSURE SALE

Minnesota Uniform Conveyancing Blanks

Minn. Stat. 580.025, 580.04 Form 60.2.1 (2009)

THE RIGHT TO VERIFICATION OF THE DEBT AND IDENTIFICATION OF THE ORIGINAL CREDITOR WITHIN THE TIME PROVIDED BY LAW IS NOT AFFECTED BY THIS ACTION.

DATE: November 20, 2017.

YOU ARE NOTIFIED that default has occurred in the conditions of the following described Mortgage:

INFORMATION REGARDING MORTGAGE TO BE FORECLOSED

1. Date of Mortgage: June 29, 2012.
2. Mortgagors: Randy W. Perkins
3. Mortgagee: Minnwest Bank Luverne
4. Recording Information: Recorded on July 2, 2012, as Document Number 179516, in the Office of the County Recorder of Rock County, Minnesota.
5. Assignments of Mortgage, if any: None.

INFORMATION REGARDING MORTGAGED PREMISES

6. Tax parcel identification number of the mortgaged premises: 20-1650-000
7. Legal description of the mortgaged premises:
Lots Thirteen (13) and Fourteen (14) in Block Twelve (12) in Warren and Kniss' Addition to the Village (now City) of Luverne, Minnesota, subject to easements of record, if any.

Check here if all or part of the described real property is Registered (Torrens)

8. The physical street address, city, and zip code of the mortgaged premises: 202 West Main Street, Luverne, Minnesota 56156.

OTHER FORECLOSURE DATA

9. The person holding the Mortgage:
 - is a transaction agent as defined by Minn. Stat. 58.02, subd. 30.
 - The name(s) of the transaction agent, residential mortgage servicer, and the lender or broker, as defined in Minn. Stat. 58.02 is/are Not applicable.
 - The transaction agent's mortgage identification number, if stated on the Mortgage, is Not applicable.
 - is not a transaction agent, as defined by Minn. Stat. 58.02, subd. 30.
 - The name(s) of the residential mortgage servicer and the lender or broker, as defined in Minn. Stat. 58.02, is Minnwest Bank Luverne.
10. If stated on the Mortgage, the name of the mortgage originator, as defined in Minn. Stat. 58.02, is not applicable.

INFORMATION REGARDING FORECLOSURE

11. The requisites of Minn. Stat. 580.02 have been satisfied.
12. The original principal amount secured by the Mortgage was \$40,000.00.
13. At the date of this notice the amount due on the Mortgage, including taxes, if any, paid by the holder of the Mortgage, is: \$26,753.16.
14. Pursuant to the power of sale in the Mortgage, the Mortgage will be foreclosed, and the mortgaged premises will be sold by the Sheriff of Rock County, Minnesota, at public auction on January 4, 2018 at 10:00 a.m., at the Rock County Sheriff's Office at 1000 North Blue Mound Avenue, Luverne, Minnesota 56156.

15. The time allowed by law for redemption by Mortgagor or Mortgagor's personal representatives or assigns is six (6) months after the date of sale.

16. Minn. Stat. 580.04(b) provides, "If the real estate is an owner-occupied, single-family dwelling, the notice must also specify the date on or before which the mortgagor must vacate the property if the mortgage is not reinstated under section 580.30 or the property redeemed under section 580.23." If this statute applies, the time to vacate the property is 11:59 p.m. on July 4, 2018.

THE TIME ALLOWED BY LAW FOR REDEMPTION BY THE MORTGAGOR, THE MORTGAGOR'S PERSONAL REPRESENTATIVES OR ASSIGNS, MAY BE REDUCED TO FIVE WEEKS IF A JUDICIAL ORDER IS ENTERED UNDER MINNESOTA STATUTES, SECTION 582.032, DETERMINING, AMONG OTHER THINGS, THAT THE MORTGAGED PREMISES ARE IMPROVED WITH A RESIDENTIAL DWELLING OF LESS THAN FIVE UNITS, ARE NOT PROPERTY USED IN AGRICULTURAL PRODUCTION, AND ARE ABANDONED.
THIS COMMUNICATION IS FROM A DEBT COLLECTOR ATTEMPTING TO COLLECT A DEBT. ANY INFORMATION WILL BE USED FOR THIS PURPOSE.

Name and address of Attorney for Mortgagor or Mortgage Assignee: _____ Name of Mortgagee or Mortgage Assignee: MINNWEST BANK LUVERNE

/s/ Greg J. Bucher
Greg J. Bucher
STONEBERG, GILES & STROUP, P.A.
300 South O'Connell Street
Marshall, MN 56258
Telephone: (507) 537-0591
Attorney Reg. No: 299601
(11-22, 11-30, 12-07, 12-14, 12-21, 12-28)

Mortgage foreclosure sale set for Jan. 11

NOTICE OF MORTGAGE FORECLOSURE SALE

Minnesota Uniform Conveyancing Blanks

Minn. Stat. 580.025, 580.04 Form 60.2.1 (2009)

THE RIGHT TO VERIFICATION OF THE DEBT AND IDENTIFICATION OF THE ORIGINAL CREDITOR WITHIN THE TIME PROVIDED BY LAW IS NOT AFFECTED BY THIS ACTION.

DATE: November 20, 2017.

YOU ARE NOTIFIED that default has occurred in the conditions of the following described Mortgage:

INFORMATION REGARDING MORTGAGE TO BE FORECLOSED

1. Date of Mortgage: March 9, 2012.
2. Mortgagors: Randy W. Perkins
3. Mortgagee: Minnwest Bank Luverne
4. Recording Information: Recorded on March 21, 2012, as Document Number 178851, in the Office of the County Recorder of Rock County, Minnesota.
5. Assignments of Mortgage, if any: None.

INFORMATION REGARDING MORTGAGED PREMISES

6. Tax parcel identification number of the mortgaged premises: 20-1650-000
7. Legal description of the mortgaged premises:
Lots Thirteen (13) and Fourteen (14) in Block Twelve (12) in Warren and Kniss' Addition to the Village (now City) of Luverne, Minnesota, subject to easements of record, if any.

Check here if all or part of the described real property is Registered (Torrens)

8. The physical street address, city, and zip code of the mortgaged premises: 202 West Main Street, Luverne, Minnesota 56156.

OTHER FORECLOSURE DATA

9. The person holding the Mortgage:
 - is a transaction agent as defined by Minn. Stat. 58.02, subd. 30.
 - The name(s) of the transaction agent, residential mortgage servicer, and the lender or broker, as defined in Minn. Stat. 58.02 is/are Not applicable.
 - The transaction agent's mortgage identification number, if stated on the Mortgage, is Not applicable.
 - is not a transaction agent, as defined by Minn. Stat. 58.02, subd. 30.
 - The name(s) of the residential mortgage servicer and the lender or broker, as defined in Minn. Stat. 58.02, is Minnwest Bank Luverne.
10. If stated on the Mortgage, the name of the mortgage originator, as defined in Minn. Stat. 58.02, is not applicable.

INFORMATION REGARDING FORECLOSURE

11. The requisites of Minn. Stat. 580.02 have been satisfied.
12. The original principal amount secured by the Mortgage was \$64,000.00.
13. At the date of this notice the amount due on the Mortgage, including taxes, if any, paid by the holder of the Mortgage, is: \$57,070.63.
14. Pursuant to the power of sale in the Mortgage, the Mortgage will be foreclosed, and the mortgaged premises will be sold by the Sheriff of Rock County, Minnesota, at public auction on January 11, 2018 at 10:00 a.m., at the Rock County Sheriff's Office

at 1000 North Blue Mound Avenue, Luverne, Minnesota 56156.

15. The time allowed by law for redemption by Mortgagor or Mortgagor's personal representatives or assigns is six (6) months after the date of sale.

16. Minn. Stat. 580.04(b) provides, "If the real estate is an owner-occupied, single-family dwelling, the notice must also specify the date on or before which the mortgagor must vacate the property if the mortgage is not reinstated under section 580.30 or the property redeemed under section 580.23." If this statute applies, the time to vacate the property is 11:59 p.m. on July 11, 2018.

THE TIME ALLOWED BY LAW FOR REDEMPTION BY THE MORTGAGOR, THE MORTGAGOR'S PERSONAL REPRESENTATIVES OR ASSIGNS, MAY BE REDUCED TO FIVE WEEKS IF A JUDICIAL ORDER IS ENTERED UNDER MINNESOTA STATUTES, SECTION 582.032, DETERMINING, AMONG OTHER THINGS, THAT THE MORTGAGED PREMISES ARE IMPROVED WITH A RESIDENTIAL DWELLING OF LESS THAN FIVE UNITS, ARE NOT PROPERTY USED IN AGRICULTURAL PRODUCTION, AND ARE ABANDONED.
THIS COMMUNICATION IS FROM A DEBT COLLECTOR ATTEMPTING TO COLLECT A DEBT. ANY INFORMATION WILL BE USED FOR THIS PURPOSE.

Name and address of Attorney for Mortgagor or Mortgage Assignee: _____ Name of Mortgagee or Mortgage Assignee: MINNWEST BANK LUVERNE

/s/ Greg J. Bucher
Greg J. Bucher
STONEBERG, GILES & STROUP, P.A.
300 South O'Connell Street
Marshall, MN 56258
Telephone: (507) 537-0591
Attorney Reg. No: 299601
(11-30, 12-07, 12-14, 12-21, 12-28, 01-04)

Mortgage foreclosure sale set for Jan. 11

NOTICE OF MORTGAGE FORECLOSURE SALE

Minnesota Uniform Conveyancing Blanks

Minn. Stat. 580.025, 580.04 Form 60.2.1 (2009)

THE RIGHT TO VERIFICATION OF THE DEBT AND IDENTIFICATION OF THE ORIGINAL CREDITOR WITHIN THE TIME PROVIDED BY LAW IS NOT AFFECTED BY THIS ACTION.

DATE: November 20, 2017.

YOU ARE NOTIFIED that default has occurred in the conditions of the following described Mortgage:

INFORMATION REGARDING MORTGAGE TO BE FORECLOSED

1. Date of Mortgage: July 30, 2014.
2. Mortgagors: Randy Perkins and Stefania L. Sanden, husband and wife
3. Mortgagee: Minnwest Bank Luverne
4. Recording Information: Recorded on August 11, 2014, as Document Number 184410, in the Office of the County Recorder of Rock County, Minnesota.
5. Assignments of Mortgage, if any: None.

INFORMATION REGARDING MORTGAGED PREMISES

6. Tax parcel identification number of the mortgaged premises: 20-0887-000
7. Legal description of the mortgaged premises:
Lot Nine (9) in Block Five (5) in Kniss Park Addition to the Village (now city) of Luverne, Minnesota.

Check here if all or part of the described real property is Registered (Torrens)

8. The physical street address, city, and zip code of the mortgaged premises: 615 Lincoln Street West, Luverne, Minnesota 56156.

OTHER FORECLOSURE DATA

9. The person holding the Mortgage:
 - is a transaction agent as defined by Minn. Stat. 58.02, subd. 30.
 - The name(s) of the transaction agent, residential mortgage servicer, and the lender or broker, as defined in Minn. Stat. 58.02 is/are Not applicable.
 - The transaction agent's mortgage identification number, if stated on the Mortgage, is Not applicable.
 - is not a transaction agent, as defined by Minn. Stat. 58.02, subd. 30.
 - The name(s) of the residential mortgage servicer and the lender or broker, as defined in Minn. Stat. 58.02, is Minnwest Bank Luverne.
10. If stated on the Mortgage, the name of the mortgage originator, as defined in Minn. Stat. 58.02, is not applicable.

INFORMATION REGARDING FORECLOSURE

11. The requisites of Minn. Stat. 580.02 have been satisfied.
12. The original principal amount secured by the Mortgage was \$44,100.00.
13. At the date of this notice the amount due on the Mortgage, including taxes, if any, paid by the holder of the Mortgage, is: \$42,912.21.
14. Pursuant to the power of sale in the Mortgage, the Mortgage will be foreclosed, and the mortgaged premises will be sold by the Sheriff of Rock County, Minnesota, at public auction on January 11, 2018 at 10:00 a.m., at the Rock County Sheriff's Office at 1000 North Blue Mound Avenue, Luverne, Minnesota 56156.

15. The time allowed by law for redemption by Mortgagor or Mortgagor's personal representatives or assigns is six (6) months after the date of sale.

16. Minn. Stat. 580.04(b) provides, "If the real estate is an owner-occupied, single-family dwelling, the notice must also specify the date on or before which the mortgagor must vacate the property if the mortgage is not reinstated under section 580.30 or the property redeemed under section 580.23." If this statute applies, the time to vacate the property is 11:59 p.m. on July 11, 2018.

THE TIME ALLOWED BY LAW FOR REDEMPTION BY THE MORTGAGOR, THE MORTGAGOR'S PERSONAL REPRESENTATIVES OR ASSIGNS, MAY BE REDUCED TO FIVE WEEKS IF A JUDICIAL ORDER IS ENTERED UNDER MINNESOTA STATUTES, SECTION 582.032, DETERMINING, AMONG OTHER THINGS, THAT THE MORTGAGED PREMISES ARE IMPROVED WITH A RESIDENTIAL DWELLING OF LESS THAN FIVE UNITS, ARE NOT PROPERTY USED IN AGRICULTURAL PRODUCTION, AND ARE ABANDONED.
THIS COMMUNICATION IS FROM A DEBT COLLECTOR ATTEMPTING TO COLLECT A DEBT. ANY INFORMATION WILL BE USED FOR THIS PURPOSE.

Name and address of Attorney for Mortgagor or Mortgage Assignee: _____ Name of Mortgagee or Mortgage Assignee: MINNWEST BANK LUVERNE

/s/ Greg J. Bucher
Greg J. Bucher
STONEBERG, GILES & STROUP, P.A.
300 South O'Connell Street
Marshall, MN 56258
Telephone: (507) 537-0591
Attorney Reg. No: 299601
(11-30, 12-07, 12-14, 12-21, 12-28, 01-04)

Mortgage foreclosure sale set for Jan. 18

NOTICE OF MORTGAGE FORECLOSURE SALE

THE RIGHT TO VERIFICATION OF THE DEBT AND IDENTITY OF THE ORIGINAL CREDITOR WITHIN THE TIME PROVIDED BY LAW IS NOT AFFECTED BY THIS ACTION.

NOTICE IS HEREBY GIVEN, that default has occurred in conditions of the following described mortgage:

- DATE OF MORTGAGE: January 24, 2012
MORTGAGOR: Kerry B. Fink, an unmarried man and Tiffany A. Wilson, an unmarried woman.
MORTGAGEE: First Farmers & Merchants National Bank.
DATE AND PLACE OF RECORDING: Recorded January 26, 2012 Rock County Recorder, Document No. 178453.

ASSIGNMENTS OF MORTGAGE: Assigned to: JPMorgan Chase Bank, National Association. Dated January 24, 2012 Recorded January 26, 2012, as Document No. 178454.

TRANSACTION AGENT: NONE
TRANSACTION AGENT'S MORTGAGE IDENTIFICATION NUMBER ON MORTGAGE: NONE
LENDER OR BROKER AND MORTGAGE ORIGINATOR STATED ON MORTGAGE: First Farmers & Merchants National Bank

RESIDENTIAL MORTGAGE SERVICER: JPMorgan Chase Bank, National Association

MORTGAGED PROPERTY ADDRESS: 1402 85th Street, Luverne, MN 56156
TAX PARCEL I.D. #: 06-0164-100
LEGAL DESCRIPTION OF PROPERTY:

A tract of land beginning at the Northwest corner of the SW 1/4 of Section 25, Township 102 North, of Range 45 West, of the 5th P.M., thence South on the West line of said Section 46 feet to the point of beginning; thence due South on the Section line 1254 feet; thence due East 198 feet; thence in a Northeasterly direction 297 feet to a point 382.8 feet East and 970.2 feet South of the Northwest corner of said SW 1/4; thence in an Easterly direction 66 feet to a point 455.4 feet East and 937.2 feet South of the Northwest corner of said SW 1/4; thence in a Northwesterly direction 897.6 feet to a point 46 feet East and 202.4 feet South of the Northwest corner of said SW 1/4; thence in a Northwesterly direction 132 feet to a point 30 feet due East of the point beginning; thence due West 30 feet to the point of beginning, and an easement in perpetuity for ingress and egress to use the existing driveway serving said property.

COUNTY IN WHICH PROPERTY IS LOCATED: Rock
ORIGINAL PRINCIPAL AMOUNT OF MORTGAGE: \$90,000.00
AMOUNT DUE AND CLAIMED TO BE DUE AS OF DATE OF NOTICE, INCLUDING TAXES, IF ANY, PAID BY MORTGAGEE: \$84,751.35

That prior to the commencement of this mortgage foreclosure proceeding Mortgagee/Assignee of Mortgagee complied with all notice requirements as required by statute; That no action or proceeding has been instituted at law or otherwise to recover the debt secured by said mortgage, or any part thereof;

PURSUANT to the power of sale contained in said mortgage, the above described property will be sold by the Sheriff of said county as follows:

DATE AND TIME OF SALE: January 18, 2018 at 10:00 AM
PLACE OF SALE: Sheriff's Office, Main Entrance, Law Enforcement Center, 1000 North Blue Mound Avenue, Luverne, MN

to pay the debt then secured by said Mortgage, and taxes, if any, on said premises, and the costs and disbursements, including attorneys' fees allowed by law subject to redemption within six (6) months from the date of said sale by the mortgagor(s), their personal representatives or assigns unless reduced to Five (5) weeks under MN Stat. §580.07.

TIME AND DATE TO VACATE PROPERTY: If the real estate is an owner-occupied, single-family dwelling, unless otherwise provided by law, the date on or before which the mortgagor(s) must vacate the property if the mortgage is not reinstated under section 580.30 or the property is not redeemed under section 580.23 is 11:59 p.m. on July 18, 2018, unless that date falls on a weekend or legal holiday, in which case it is the next weekday, and unless the redemption period is reduced to 5 weeks under MN Stat. Secs. 580.07 or 582.032.

MORTGAGOR(S) RELEASED FROM FINANCIAL OBLIGATION ON MORTGAGE: None
"THE TIME ALLOWED BY LAW FOR REDEMPTION BY THE MORTGAGOR, THE MORTGAGOR'S PERSONAL REPRESENTATIVES OR ASSIGNS, MAY BE REDUCED TO FIVE WEEKS IF A JUDICIAL ORDER IS ENTERED UNDER MINNESOTA STATUTES, SECTION 582.032, DETERMINING, AMONG OTHER THINGS, THAT THE MORTGAGED PREMISES ARE IMPROVED WITH A RESIDENTIAL DWELLING OF LESS THAN FIVE UNITS, ARE NOT PROPERTY USED IN AGRICULTURAL PRODUCTION, AND ARE ABANDONED."

JPMorgan Chase Bank, National Association
Mortgagee/Assignee of Mortgagee

USSET, WEINGARDEN AND LIEBO, P.L.L.P.
Attorneys for Mortgagee/Assignee of Mortgagee
4500 Park Glen Road #300
Minneapolis, MN 55416
(952) 925-6888
30 - 17-007329 FC
THIS IS A COMMUNICATION FROM A DEBT COLLECTOR.
(11-30, 12-07, 12-14, 12-21, 12-28, 01-04)

Mortgage foreclosure sale set for Feb. 1

NOTICE OF MORTGAGE FORECLOSURE SALE

THE RIGHT TO VERIFICATION OF THE DEBT AND IDENTIFICATION OF THE ORIGINAL CREDITOR WITHIN THE TIME PROVIDED BY LAW IS NOT AFFECTED BY THIS ACTION.

DATE: November 21, 2017.

Default has occurred in the conditions of the following described Mortgage:

- DATE OF MORTGAGE: June 5, 2015
ORIGINAL PRINCIPAL AMOUNT OF MORTGAGE: \$51,000.00
MORTGAGOR(S): Kevin R. Pater, a single person
MORTGAGEE: Exchange State Bank
DATE AND PLACE OF FILING: June 8, 2015 at Office of Land Records Rock County, Minnesota

ASSIGNMENTS OF MORTGAGE: NONE

LEGAL DESCRIPTION OF PROPERTY:
The East Eight Hundred Ten and Four Tenths (E. 810.4) feet of the North Four Hundred Thirty (N. 430) feet of the South Half of the Northeast Quarter (\$ 1/2 of NE 1/4) of Section Five (5), Township One Hundred Four (104) North, Range Forty-four (44) West of the 5th P.M., Rock County, Minnesota
EXCEPT

Tract 2 in the E. 810.4' of the N. 430' of the S 1/2 - NE 1/4 Section 5-104-44

That part of the East 810.4 Feet of the North 430 Feet of the South Half of the Northeast Quarter (E.810.4' - N.430' - S 1/2 - NE 1/4) of Section Five (5), Township 104 North, Range 44 West of the 5th P.M., Rock County, Minnesota, Described as Follows:

Commencing at the East Quarter Corner of Said Section 5; Thence North 00°29'28" West on the East Line of Said NE 1/4 for a Distance of 894.43 Feet to the Southeast Corner of said E.810.4' - N.430' - S 1/2 - NE 1/4 and to the point of Beginning; Thence Continuing North 00°29'28" West on East Line for a Distance of 53.29 Feet; Thence North 88°16'07" West a Distance of 332.71 Feet; Thence North 00°58'06" East for a Distance of 372.70 Feet to the North Line of Said E. 810.4' - N. 430' - S 1/2 - NE 1/4; Thence North 88°57'47" West on Said North Line for a Distance of 487.61 Feet to the Northwest Corner of Said E. 810.4' - N. 430' - S 1/2 - NE 1/4; Thence South 00°29'28" East on the West Line of Said E. 810.4' - N. 430' - S 1/2 - NE 1/4 for a Distance of 430.15 Feet to the Southwest Corner of Said E. 810.4' - N. 430' - S 1/2 - NE 1/4; Thence South 88°57'47" East on the South Line of Said E. 810.4' - N. 430' - S 1/2 - NE 1/4 for a Distance of 810.69 Feet to the point of Beginning, Containing 5.18 Acres, Inclusive of 0.04 Acres of Public Road Right-of-Way on the East Side Thereof.

Subject to Easements, if any, of Record or Apparent.
COUNTY IN WHICH PROPERTY IS LOCATED: Rock
THE AMOUNT CLAIMED TO BE DUE ON THE MORTGAGE ON THE DATE OF THE NOTICE: \$34,140.67.

THAT no action or proceeding has been instituted at law to recover the debt secured by said mortgage, or any part thereof; that there has been compliance with all pre-foreclosure notice and acceleration requirements of said mortgage, and/or applicable statutes;

PURSUANT to the power of sale contained in said mortgage, the above described property will be sold by the Sheriff of Rock County as follows:

DATE AND TIME OF SALE: February 1, 2018 at 10:00 A.M.
PLACE OF SALE: Rock County Sheriff's Office, 1000 North Blue Mound Avenue, Luverne, MN 56156

to pay the debt then secured by said mortgage and taxes, if any actually paid by the mortgagee, on the premises and the costs and disbursements allowed by law. The time allowed by law for redemption by said mortgagors, their personal representatives or assigns is six (6) months for the date of sale.

THE TIME ALLOWED BY LAW FOR REDEMPTION BY THE MORTGAGOR(S), THE MORTGAGOR(S)' PERSONAL REPRESENTATIVES OR ASSIGNS MAY BE REDUCED TO FIVE WEEKS IF A JUDICIAL ORDER IS ENTERED UNDER MINNESOTA STATUTES, SECTION 582.032, DETERMINING, AMONG OTHER THINGS, THAT THE MORTGAGED PREMISES ARE IMPROVED WITH A RESIDENTIAL DWELLING OF LESS THAN FIVE UNITS, ARE NOT PROPERTY USED IN AGRICULTURAL PRODUCTION, AND ARE ABANDONED.

By: /s/ Katherine A. Morgan
Katherine A. Morgan
Bonander Law, PC
430 Holder Street
PO Box 186
Larchwood, IA 51241

...continued from previous page

Ph. (712) 477-2902

NOTICE OF MORTGAGE FORECLOSURE SALE FORECLOSURE DATA
 (1) Street Address, City and Zip Code of mortgaged premises:
 2477 170th Avenue, Edgerton, Minnesota 56128
 (2) Transaction agent; residential mortgage servicer; and lender or broker:
 Exchange State Bank
 (3) Tax parcel identification number:
 01-0020-000
 (4) Transaction Agent's mortgage ID number (MERS number):
 NMLS#653978
 (5) Name of mortgage originator:
 Exchange State Bank (11-30, 12-7, 12-14, 12-21, 12-28, 1-4)

Kille probate

FIFTH JUDICIAL DISTRICT
DISTRICT COURT
PROBATE DIVISION
COURT FILE NO.67-PR-17-377

STATE OF MINNESOTA
COUNTY OF ROCK

Estate of
Jerilyn A. Kille, a/k/a Jerilyn Ann Kille,
Decedent

NOTICE AND ORDER OF HEARING ON PETITION FOR PROBATE OF WILL AND APPOINTMENT OF PERSONAL REPRESENTATIVE AND NOTICE TO CREDITORS(ANCILLARY PROCEEDING)

It is Ordered and Notice is given that on January 22, 2018, at 3:30 p.m., a hearing will be held in this Court at 204 E. Brown, Luverne, Minnesota, for the formal probate of an instrument purporting to be the Will of the Decedent dated January 18, 2008, ("Will"), and for the appointment of Jonathan Kille, whose address is 309 S. Red Willow Ave., Sioux Falls, SD 57110 as Ancillary Personal Representative of the Estate of the Decedent in a SUPERVISED administration. Any objections to the petition must be filed with the Court prior to or raised at the hearing. If proper and if no objections are filed or raised, the Personal Representative will be appointed with power to administer the assets of the Estate in Minnesota including the power to collect all assets, pay all legal debts, claims, taxes and expenses, and sell real and personal property, and do all necessary acts for the Estate.

Notice is also given that (subject to Minnesota Statutes section 524.3-801) all creditors having claims against the Estate are required to present the claims to the Personal Representative or to the Court Administrator within four months after the date of this Notice or the claims will be barred.

Dated: 12/15/17

BY THE COURT
/s/ Terry S. Vaigrt
Judge of District Court

(COURT SEAL)

Dated: 12/15/17

/s/ Denise Brandel
Court Administrator

Attorney for Petitioner

Jeffrey L. Haubrich
Klosterbuer & Haubrich, LLP
120 N. McKenzie
Luverne, MN 56156
Attorney License No: 3000020
Telephone: (507) 283-9111
FAX: (507) 283-9113
Email: jhaubrich@khlawmn.com

(12-21, 12-28)

ISD #2184 School Board meets Nov. 21

MINUTES OF THE SCHOOL BOARD MEETING OF INDEPENDENT SCHOOL DISTRICT NO. 2184, ROCK COUNTY, LUVERNE, MINNESOTA.

A regular meeting of the Board of Education, ISD #2184, was held in the District Office on November 21, 2017, at 7:00 p.m.

The following members were present: Katie Baustian, Colleen Deutsch, Eric Hartman, Tim Jarchow, and Reva Sehr. Absent: Jodi Bosch and Shelley Sandbulte. Also present: Craig Oftung, Marlene Mann, Stacy Gillette, Debra Hoogendoorn, Jennifer Engesser, Samantha Pierce, Jacinda Hustoft, Ashlee Boltjes, Jim Gilman, and Mavis Fodness – Rock County Star Herald.

Chairperson Baustian called the meeting to order with the Pledge of Allegiance. Motion made by Deutsch, second by Hartman, to approve the agenda as presented. Administrative reports were given.

Superintendent Oftung presented a request he received from Ashlee Boltjes and Jacinda Hustoft regarding cheerleading for the basketball season. They presented the school board with a petition signed by around 70 students. Discussion was held. Chairperson Baustian noted this was just an information gathering presentation. No action would be taken tonight.

Motion made by Deutsch, second by Sehr, to approve the School Board minutes from the October 26 and November 14, 2017, meetings. Motion unanimously carried.

Business Manager Marlene Mann reviewed the school district bills with the school board. Motion made by Hartman, second by Jarchow, to approve payment of the bills as presented in the amount of \$1,261,966.91. Motion unanimously carried.

Motion made by Deutsch, second by Hartman, to receive the Student Activity Report showing the balances as of October 31, 2017. Motion unanimously carried.

Jim Gilman representing Conway, Deuth & Schmiessing, LLP, presented the Fiscal Year

2016-17 Audit Report. The School District is in very good financial shape. Motion made by Hartman, second by Sehr, to approve the fiscal year 2016-17 Audit Report as presented. Motion unanimously carried.

Business Manager Marlene Mann reviewed the District Revenues and Expenditures Budget for FY 2017 and FY2018 report. The report shows that the FY 2017 Operating Cost per ADM is \$11,032.45. Motion made by Deutsch, second by Sehr, to approve the report as presented. Motion unanimously carried.

Motion made by Hartman, second by Deutsch, to set a special school board meeting for December 7, 2017, at 6:00 p.m. for the sale of the LTFM Bonds. Motion unanimously carried.

Motion made by Deutsch, second by Sehr, to approve a request from Elaine Harms, English teacher, for a medical leave of absence for four to six weeks beginning on November 9, 2017. Motion unanimously carried.

Motion made by Hartman, second by Sehr, to approve the hiring of Eileen Siebenahler as two-hour food service worker. Motion unanimously carried.

Motion made by Deutsch, second by Jarchow, to approve the hiring of Jeremy Kopp as Assistant Wrestling coach. Motion unanimously carried.

Motion made by Sehr, second by Deutsch, to approve Lance Ripka as volunteer wrestling coach. Motion unanimously carried.

Motion made by Sehr, second by Jarchow, to approve the hiring of April Wallace as C-squad Girls Basketball coach. Motion unanimously carried.

Motion made by Sehr, second by Deutsch, to approve the hiring of Jamie Beyer as 8th grade Girls Basketball coach. Motion unanimously carried.

Motion made by Hartman, second by Sehr, to approve the hiring of Adam Hansen as 7th grade Girls Basketball coach. Motion unanimously carried.

Motion made by Jarchow, second by Hartman, to approve Paul Erickson as volunteer Boys Hockey coach. Motion unanimously carried.

Motion made by Hartman, second by Deutsch, to approve a maternity leave request from Cassie Snyders, paraprofessional, for 10-12 weeks beginning approximately January 12, 2018. Motion unanimously carried.

Motion made by Deutsch, second by Sehr, to approve a medical leave of absence for Rod Rosin, custodian, from November 16-November 30, 2017. Motion unanimously carried.

School Board members were asked to complete the SW/WC Service Cooperative Board of Directors election ballots.

Committee reports were given. The upcoming meeting dates were reviewed. Motion made by Deutsch, second by Hartman, to adjourn the meeting. Motion unanimously carried.

Dated: November 21, 2017

Shelley Sandbulte, Clerk
(12-28)

Rock County Commissioners meet Nov. 7

Herreid Board Room 9:00 A.M.
Rock County Courthouse November 7, 2017

The meeting was called to order by Chair Williamson with all Commissioners present; the Pledge of Allegiance was recited.

Motion by Burger, seconded by Reisch, to approve the November 07, 2017, declared carried on a voice vote.

Motion by Overgaard, seconded by Reisch, to approve County Board minutes of October 17, 2017, declared carried on a voice vote.

Beth Wilms, SWHHS Director, introduced herself as the new SWHHS Agency Director and presented a departmental update. Currently, the 2017 budget indicates a deficit of \$750,000 - \$2.5 million, with no reserves. Wilms indicated that she is in the process of developing a work plan to correct the deficit and establish financial stability, however emphasized that it will take some time. The agency has requested a 3% levy increase which will make up about forty percent of the agency's budget; the remaining revenues will come from state and federal funding. Wilms also expressed other concerns of cost shifts from the state and the crisis of mental health services. The County Board thanked Ms. Wilms for the departmental update.

Eric Hartman, Land Management Office Director and Doug Bos, Land Management Office Assistant Director presented a number of department items. Bos reviewed details of the 2018 Delegation Agreement Work Plan to include required feedlot reviews. Motion by Burger, seconded by Overgaard to approve the 2018 Delegation Agreement Work Plan, declared carried on a voice vote.

Bos also presented a 2017 Feedlot Summary Report; presented as information only with no action taken.

Hartman requested approval of a Condition Use Permit - KCI Wireless/Verizon Wireless for the placement and operation of a 259 foot tall wireless telecommunications tower to be located in the S 1/2 of the S 1/2 of the SW 1/4 of Section 12 of Magnolia township for the improvement of cellular communication service in Rock County primarily along the I-90 corridor. Hartman indicated the permit will expire on January 1, 2020 in the event the applicant has not substantially implemented development of the tower site. Motion by Overgaard, seconded by Thompson, to approve the conditional use permit for KCI Wireless, declared carried on a voice vote.

Hartman presented a contract amendment with SEH No. ROCCO 141257 for additional services addressing noncompliance issues brought about with the newly issued solid waste permit from MPCA; the amendment results in a \$2,900 increase. Motion by Burger, seconded by Williamson, to approve, declared carried on a voice vote.

Hartman presented a Buffer Law update stating that 94% of the parcels are in some type of compliance with the remaining 6% of parcels requiring some type of review.

Evan Verbrugge, Sheriff, requested authorization to replace the surveillance system at the Rock County Sheriff's Office, an upgrade from analog cameras and recorders to a digital system. The Sheriff presented a bid from Convergent Technologies for \$15,187.95. The Administrator also discussed a surveillance system at the Rock County Veteran's Memorial building for \$9,550.55 and a camera replacement for the Rock County Veteran's Memorial for \$2,707.17, also from Convergent Technologies. Motion by Thompson, seconded Reisch, to authorize the purchases with the expenses being paid from the following funding: Sheriff's Office Sheriff's budget, Rock County Veterans Memorial Building from Veterans Memorial Building budget and the Veterans Memorial from the Veterans Memorial Account, declared carried on a voice vote.

Melody Caron, Local Government Auditor with State Auditor's Office presented an exit of the 2016 Audit which resulted in no significant findings; presented as information only.

Ashley Kurtz, Auditor/Treasurer, presented the claims and per diems of \$1,050.00; motion by Burger, seconded by Overgaard, to approve the claims and per diems, declared carried on a unanimous vote. A complete listing of the claims is available upon request at the Auditor/Treasurer's office.

Claims over \$2,000:	
AMERICAN ENGINEERING TESTING, INC	6,721.00
BARGEN INC	2,797.50
BURLINGTON-NORTHERN/SANTA FE RAILWAY COM	8,279.89
COMPUTER PROFESSIONALS UNLIMITED INC	6,231.00
EMERALD DATA SOLUTIONS INC	4,000.00
ERICKSON ENGINEERING	7,754.00
FLEET SERVICES DIVISION-ADMIN FMR	4,653.23
KETTERLING SERVICES INC	9,412.03
KLOSTERBUER & HAUBRICH	2,447.36
LUVERNE/CITY OF	4,730.68
NOBLES COUNTY AUDITOR-TREASURER	11,082.50
NORTHERN SAFETY TECHNOLOGY INC	2,207.51
RANDY'S PUMPING SERVICE	4,850.00
102 Payments less than 2000	38,130.72
Total	\$113,297.42

Motion by Overgaard, seconded by Thompson, to approve Fund Balance report, declared carried on a voice vote.

The County Board was in receipt of the 2018 Tax Capacity Rates; presented as information only.

Mark Sehr, Engineer, requested a final contract payment of \$34,182.09 to Duinick Inc. for SAP 0607-816-010, SAP 067-635-004, SAP 067-618-009, a Mill/Overlay & Box Culvert project in the City of Luverne. Motion by Reisch, seconded by Overgaard, to approve, declared carried on a voice vote.

Don Klosterbuer, County Attorney, reviewed a DNR and Rock County Joint Powers Agreement (JPA) to hook the Blue Mound State Park up to the Rock County Rural Water System. Motion by Thompson, seconded by Reisch, to approve the JPA between DNR and Rock County, declared carried on a voice vote. Construction is projected at \$643,000 and contingent on DNR approval of final bids.

INFORMATIONAL

Motion by Overgaard, seconded by Burger, to approve the 2018 Cafeteria Plan Contribution of \$702.70 for all eligible nonunion employees, declared carried on a voice vote.

The Administrator led a discussion regarding HVAC repairs needed at Veterans Memorial Bldg totaling \$9,965.00; repairs include replacement of (4) humidifiers and a hot water pump. Motion by Reisch, seconded by Overgaard, to authorize the repairs and pay the expenditures from Building Fund, declared carried on a voice vote.

The Administrator informed the County Board that currently the elevator at the Courthouse is not working and also that the elevator system is over 30 years old, thus making repairs difficult. Motion by Reisch, seconded by Burger, to refer the issue to the Building Committee to review repair options, select the best option and authorize the expenditure from the Building Fund, declared carried on a voice.

The County Board was in receipt of a Notice of Amendment for SRDC Joint Powers Agreement; presented as information only.

COMMISSIONER ITEMS:

Commissioner Reisch stated that he attended a Governor's Broadband Taskforce meeting, and Plum Creek Regional Library meeting.

Commissioner Thompson stated that she attended a SWHHS meeting, AMC District 8, new Armory site event and BoardDocs training.

Commissioner Burger stated that he attended the new Armory site event, BoardDocs training, AMC District 8 meeting and Supporting Hands committee meeting.

Commissioner Overgaard stated that he attended the new Armory site event, AMC District 8 meeting, and Planning and Zoning meeting.

Commissioner Williamson stated that he attended the AMC District 8 meeting and Rock County Opportunities meeting.

With no further business to come before the County Board, meeting was declared adjourned.

(12-28)

Rock County Commissioners meet Nov. 21

Herreid Board Room 9:00 A.M.
Rock County Courthouse November 21, 2017

The meeting was called to order by Chair Williamson with all Commissioners present; the Pledge of Allegiance was recited.

Motion by Burger, seconded by Thompson, to approve the November 21, 2017 County Board agenda, declared carried on a voice vote.

Motion by Burger, seconded by Overgaard, to approve the November 07, 2017 County Board minutes, declared carried on a voice vote.

Motion by Thompson, seconded by Reisch, to approve the Consent Agenda, declared carried on a voice vote.

- 1.Resolution No. 17-17, HHW Program Agreement w/Lyon County
- 2.Everbridge Contract Renewal – Nixel mass alert communication system
- 3.2018 IV-D Child Support Arrangement between SWHHS, Sheriff, County Attorney

Tessia Melvin Management Consultant with DDA Human Resources, Inc. presented an update of the Comparable Worth Study and presented a document that identified the new job classifications with new ranges and the current pay to market data. She indicated that overall, Rock County was fairly close to the market with exception of a few job classes. Ms. Melvin presented two options for implementing the wage system:

- 1.Provide all employees a COLA of 2.5% and move hourly employees into the new system; estimated cost \$193,778
- 2.Provide all employees a COLA of 2.5% and move hourly employees into the new system and in addition, salary employees would receive the next step adjustment and COLA; estimated cost \$349,024.

Motion by Reisch, seconded by Burger, to approve Option 1 for implementation and approve the new Job Classification along with the 2018 Pay Plan, declared carried on a voice vote.

Ms. Melvin stated that employees will have a final appeal option for the new job classification; Melvin and the Administrator's office will notify all employees of the new job classification and the appeal process.

Evan Verbrugge, Sheriff, presented a price quote from Morris Electronics for \$24,902.40 for computer equipment for the Computer Aided Dispatch system (CAD); the Sheriff requested authorization to begin implementation of CAD with the purchase of equipment. Motion by Burger, seconded by Thompson, to authorize the purchase with payment to be made in 2018 as it is identified in the 2018 budget, declared carried on a voice vote.

Ashley Kurtz, Auditor/Treasurer, presented the Fund Balance report and discussed the second half of the tax collection and distribution; motion by Overgaard, seconded by Reisch, to approve the Fund Balance report, declared carried on a voice vote.

The Auditor/Treasurer presented the claims and per diems of \$450.00. There was discussion regarding charges from District Court fund and as to whether or not to include District Court to the budget process as currently it is not identified; it was determined to refer the issue to the Budget Committee. Motion by Burger, seconded by Williamson, to approve the claims as presented and the per diems of \$450.00, declared carried on a voice vote. A complete listing of the claims is available upon request at the Auditor/Treasurer's office.

Claims over \$2,000:	
A & B BUSINESS INC	2,442.08
AMERICAN COMMUNICATIONS INC	4,276.70
CHS	5,701.61
CONVERGINT TECHNOLOGIES LLC	7,088.89
ERICKSON ENGINEERING	4,661.50
EXPRESS AG	2,450.03
EXPRESSWAY-LUVERNE	4,063.89
HENNING CONSTRUCTION, INC	22,431.73
JOHNSON CONTROLS	66,300.88
KETTERLING SERVICES INC	9,559.33
KRIS ENGINEERING INC	20,155.00
LUVERNE/CITY OF	5,906.94
LYON COUNTY LANDFILL	17,962.50
MORRIS ELECTRONICS	5,805.20
ROCK COUNTY OPPORTUNITIES	2,980.05
RUNCHEY, LOUWAGIE & WELLMAN	2,244.66
RUPP CONSTRUCTION CO INC	9,084.83
SANDERS INC	3,777.84
SMITH & JOHNSON	2,869.00
ZIEGLER INC	8,788.00
90 Payments less than 2000	31,152.45
Final Total	239,703.11

The Auditor/Treasurer presented an update regarding tax forfeited property stating that all properties are vacant with the exception of parcel 19-0028-000 which has a request to re-purchase; all other properties will be sold at a public sale. The sale price of tax forfeited properties will be determined by the County Assessor and the County Board will approve the sale prior to the public sale.

The County Board was in receipt of a request to re-purchase tax forfeited property, parcel 19-0028-000 for the amount owed in taxes, interest, costs and fees totaling \$8,552.69; motion by Reisch, seconded by Overgaard to approve Resolution No. 18-17, Re-Purchasing Tax Forfeited Property with an expiration date of December 1, 2017, declared carried on a voice vote.

INFORMATIONAL:

1.The County Board was in receipt of (7) contracts renewals from Rock County Opportunities Inc. for cleaning, shredding and miscellaneous services at Rock County building sites; the renewals reflect a total price increase of \$11,000 due to new minimum wage standards. The Administrator stated that he researched additional options, but resulted in more expense or less service. Motion by Williamson, seconded by Overgaard, to approve the contracts, declared carried on a voice vote.

2.The Administrator led a discussion regarding a lawn mower replacement, trading in the ExMark Lazer DS for a Yanmar series for the purpose of extending the life of the John Deere lawn mowers. The Administrator present (2) price quotes:

- Lazer Z Diesel 25 HP Yanmar w/60" Ultra Cut - \$5,799.00 w/\$11,000 trade in of ExMark
- Lazer Z Diesel 25 HP Yanmar w/72" Ultra Cut - \$6,119.00 w/\$11,000 trade in of ExMark

After considerable, it was determined to not take action but rather discuss again in 2018.

3.The Administrator presented an update regarding the elevator at the Courthouse. Working the elevator is working but temporarily and awaiting bids for repairs. Early estimates indicate the repairs will cost \$60,000 - \$65,000 plus other incidents that may impact updated building codes. Once the bid is approved, the repair process will take 6-8 weeks, therefore, the Courthouse building will not be handicap accessible. The Administrator stated he will obtain bids for the repair project and research and develop a plan for handicap accessibility.

4.Motion by Reisch, seconded by Thompson, to accept a resignation from SWHHS Member at Large Ron Boyenga, declared carried on a voice vote. The Administrator will begin the process for a new appointment to fill the vacancy.

COMMISSIONER ITEMS:

Reisch stated that he had attended the following meetings: Library Board, Personnel Committee, Transit Advisory Committee.

Thompson stated that she had attended the following meetings: SWHHS Budget and SWHHS Board.

Burger stated that he had attended the following meetings: SWHHS Board, SWHHS Budget, Correction Annual meeting, Personnel Committee.

Overgaard stated that he had attended the following meetings: Transit Advisory Williamson stated that he had attended the following meetings: SWCD, SWMH, One Watershed One Plan.

With no further business to come before the County Board, meeting was declared adjourned.

(12-28)

Read the Public Notices online
www.star-herald.com

Star Herald PUBLIC NOTICES

Star Herald CLASSIFIEDS

ISD #2184 School Board meets Dec. 7

MINUTES OF THE SCHOOL BOARD MEETING OF INDEPENDENT SCHOOL DISTRICT NO. 2184, ROCK COUNTY, LUVERNE, MINNESOTA.

A special meeting of the Board of Education, ISD #2184, was held in the District Office on December 7, 2017, at 6:00 p.m.

The following members were present: Katie Baustian, Jodi Bosch, Colleen Deutsch, Eric Hartman, Tim Jarchow, Shelley Sandbulte, and Reva Sehr. Also present: Craig Oftedahl and Greg Crowe.

Chairperson Baustian called the meeting to order with the Pledge of Allegiance. Motion made by Hartman, second by Bosch, to approve the agenda as presented. Motion unanimously carried.

Ehlers, Inc., representative Greg Crowe presented the Sale Day Report for the \$7,475,000 General Obligation Facilities Maintenance Bonds, Series 2017A (LTFM bonds). He noted that the Moody's Investor's Service had given the school district an "Aa3" rating which is one of the best ratings a school district may receive. Bids were received as follows:

Wells Fargo Bank, National Association - Charlotte, North Carolina 2.0593%

BAIRD - Milwaukee, Wisconsin 2.1091%
Piper Jaffray - Minneapolis, Minnesota 2.1981%
Northland Securities, Inc. - Minneapolis, Minnesota

2.2507%
Suntrust Robinson Humphrey - Nashville, Tennessee 2.3602%

He reviewed the estimated payments and tax levies for the existing debt and proposed new debt.

Member Deutsch introduced the following resolution and moved its adoption: RESOLUTION AWARDING THE SALE, DETERMINING THE FORM AND DETAILS, AUTHORIZING THE EXECUTION, DELIVERY AND REGISTRATION, AND PROVIDING FOR THE PAYMENT OF GENERAL OBLIGATION FACILITIES MAINTENANCE BONDS, SERIES 2017A

The motion for adoption of the foregoing resolution was duly seconded by Member Hartman, and upon vote being taken thereon, the following voted in favor thereof:

Hartman, Deutsch, Sandbulte, Jarchow, Sehr, Bosch, and Baustian

And the following voted against the same: none;

Whereupon said resolution was duly passed and adopted.

Ehlers, Inc., representative Greg Crowe presented the Pre-Sale Report for \$22,670,000 General Obligation School Building Bonds, Series 2018A. He reviewed the proposed debt issuance schedule and the estimated payments and tax levies for existing debt and proposed new debt.

Member Sehr introduced the following resolution and moved its adoption: RESOLUTION PROVIDING FOR THE SALE OF GENERAL OBLIGATION SCHOOL BUILDING BONDS, SERIES 2018A; AND COVENANTING AND OBLIGATING THE DISTRICT TO BE BOUND BY AND TO USE THE PROVISIONS OF MINNESOTA STATUTES, SECTION 126C.55 TO GUARANTEE THE PAYMENT OF THE PRINCIPAL AND INTEREST ON THESE BONDS

The motion for adoption of the foregoing resolution was duly seconded by Member Bosch, and upon vote being taken thereon, the following voted in favor thereof:

Hartman, Deutsch, Sandbulte, Jarchow, Sehr, Bosch and Baustian

And the following voted against the same: none;

Whereupon the resolution was declared duly passed and adopted.

The upcoming meeting dates were reviewed. Motion made by Hartman, second by Deutsch, to adjourn the meeting. Motion unanimously carried.
Dated: December 7, 2017

Shelley Sandbulte, Clerk
(12-28)

Star Herald CLASSIFIEDS

SERVICES

SERVICES

HELP ME!

Is that how you feel at times?
If so, call

**PREMIER DAN
the
HANDY MAN**

I may be able to help you.
(612) 578-3499

- Painting
- Door Installation
- Finish Carpentry
- Auto Detailing
- Appliance Repair
- Knife Sharpening
- Cleaning
- More!

EMPLOYMENT

EMPLOYMENT

Sanford Luverne Medical Center
is currently accepting applications for FT (Full-Time), PT (Part-Time) and PRN (Part-Time as Needed) positions:

- CERTIFIED MEDICATION ASSISTANT - PRN
- CERTIFIED MEDICAL ASSISTANT - PT
- CERTIFIED REGISTERED NURSE ANESTHETIST - FT
- CT TECHNOLOGIST - PT
- HOME HEALTH AIDE - PT, PRN
- HOUSEKEEPING - PT
- LICENSED ALCOHOL AND DRUG COUNSELOR - PT
- LPN, HOSPICE - PRN
- LPN, CLINIC - PT
- PARAMEDIC - FT
- RECEPTIONIST - PT
- RN, INPATIENT - FT

To apply, visit sanfordhealth.jobs search "Luverne" in the location search bar.

SANFORD
HEALTH
"Your Calling, Your Place."

Sanford Luverne Medical Center | 877-243-1372

EEO/AA



**Full-time diesel mechanic needed
to join our team.**

Experience is necessary. Benefits package. Uniforms provided. Competitive pay based on qualifications. Send resume to bjmenterprises@alliancecom.net or mail to 191 101st Street, Beaver Creek, MN 56116 Phone # 507-597-2012

EMPLOYMENT

Drivers: LOCAL part-time hiker/vehicle transporter opening in Sioux Falls. Excellent hourly pay! Great for CDL Class A or B drivers with 2yrs experience seeking supplemental income. Penske Truck Leasing: 855-516-7827 (12.28-1.14)

Office Help Wanted: Loosbrock Digging Service, Inc., located in Lismore, MN, is currently seeking a Secretary/Bookkeeper to help with various office functions. Experience with Microsoft Office applications and QuickBooks is a plus. Hourly wage will be determined based on experience. If interested in the position, please send resume to: ldsinc@lismoretele.com. We offer Health Insurance and 401(k) benefits. (12.17-1.4)

RN/LPN: Parkview Manor is looking for a full-time RN/LPN! Benefits include health insurance, dental insurance, paid time off, Public Employee Retirement, and holiday pay! Wages are based on experience level. If interested, contact Darnell Krull at (507) 967-2388 or Sam Quam at (507) 967-2482. (tc)

Dietary Aide: Parkview Manor is looking for a part-time Dietary Aide for our afternoon shift. This is a great job for students! If interested, contact Sam or Arlys at (507) 967-2482. (tc)

CNA: Parkview Manor is looking for CNAs! Benefits include health insurance, PERA retirement plan, holiday pay, and a \$2,000 scholarship available for students! We will provide training or pay for experience. Wages are based on experience level. If interested, contact Darnell Krull at (507) 967-2388 or Sam Quam at (507) 967-2482. (tc)

CARDS OF THANKS

Do not stand at my grave and weep, I am not there, I do not sleep. I am a thousand winds that blow, I am the diamond glint on snow. I am the sunlight on ripened grain, I am the gentle autumn rain. When you wake in the morning hush; I am the swift uplifting rush of quiet birds in circling flight, I am the soft starlight at night. Do not stand at my grave and cry. I am not there, I did not die. Thank you

The family of
Esther Petersen
(12.24-12.28)

The family of Meta Fick would like to take this opportunity to express our sincerest appreciation for the outpouring of love and support during this difficult time. Thank you to everyone who kept us in their thoughts and prayers, who brought food, sent cards, flowers and memorials. We especially extend our gratitude to Hospice Cottage, pastors and Hartquist Funeral Home. We are truly blessed to have you in our lives.

Family of Meta Fick
(12.28-12.31)

I want to express my gratitude for all the thoughts and prayers received during this difficult time. I want to say thank you to Dingmann Funeral Home and Pastor Hilding for their services, the Minnesota Veterans Home for the excellent care of my mom over the years, and a special thank you to Esther Frakes.

The family of Gayle Beers
(12.28-12.31)

RENTALS

**NOW LEASING
1 BEDROOM
CENTENNIAL
APARTMENTS**
For those 50+ or Disabled Income based rent + ALL utilities included Pets welcome (507) 283-2652 LloydManagementInc.com Equal Housing Opportunity

Farmland for Rent: looking for a farmland renter in Rock County. Rosedell township Section 22, SE 1/4, 160 acres 128 tillable. All offers considered. Call Mary Ann Davis at 612.729.6751. (12.24-1.11)

For Rent: two-bedroom apartment. Off street parking, on-site laundry, wall a/c, heat and water provided. Close to Senior Center and Post Office. Call 507-290-0266. (12.14-12.31)

For Rent: one-large bedroom apartment. Stove and refrigerator furnished. No pets. Call 507-283-4095 or 507-290-1948. (tc)

For Rent: one-bedroom apartment near downtown Luverne. \$290 per month. No Pets. Call 605-201-6427. (tc)

WORK WANTED

Wanted: snow removal jobs in the Luverne area. Call 507-920-0573 to inquire. (11.12-12.31)

MISCELLANEOUS

HAVE A UNIQUE SERVICE OR BUSINESS? Get the word out to over 1.4 million households. Call WIDE AREA CLASSIFIEDS today, 507-359-7326. (tc)

EMPLOYMENT



HELP WANTED Poultry Production Workers

Starting Pay \$14.50 with excellent benefits!
Now hiring Directly
Simply Essentials in Charles City, IA
1st and 2nd Shifts Available

Requirements:

- Humanely handle live birds
- Perform deboning and/or cutting of chicken
- Weigh, Wrap, and prepare poultry for shipment
- Willingness to learn
- Reliable - have good attendance

Please contact:

Recruiters at Simply Essentials
641-228-4127 ext. 2010

Or email mfranksain@simply-essentials.com



Ring in the
New Year
by attending a Job Fair at

SOUTH SHORE
1307 S. Shore Dr.
Worthington
507-376-3175
Wednesday, January 3
9 - 2 p.m.

CROSSROADS
965 McMillan St.
Worthington
507-376-5312
Friday, January 5
9 - 2 p.m.

Now offering increased competitive wages and sign-on bonuses for PT or FT nursing positions.

Current Positions Available: RN/LPN and CNA's

The daily news off Rock County
Star-Herald.com

Smithfield Sioux Falls Meat Your Career

- *Production Team Members
- *Warehouse Team Members
- *Maintenance Team Members
- *Maintenance Supervisor

Sizzling Hot Benefits

- Competitive Pay
- Excellent Medical, Dental & Vision
- Pay as little as \$24.71 per week
- Paid vacations, holidays, bereavement and sick leave
- Tuition Reimbursement
- Up to \$6,000 per year
- Company Meat Store Discounts
- 401(k) Plan with Matching Funds
- Many opportunities to advance your career!

See all our sizzling hot careers at:

www.smithfieldfoods.com/careers

Or call 605-330-3354

Smithfield is an EEO/AA Employer

Smithfield
Good food. Responsibly.®



Minnesota Classified Advertising Network

EMPLOYMENT

NOW HIRING WELDERS

Machinist, Powder Coat. Pay based on experience. Resumes: receptionist@rdmofmn.com or stop in and apply: 703 1st Ave SE. Dodge Center, MN 55927

Classified Advertising that is Easy!

THE MINNESOTA CLASSIFIED Ad NETWORK
Make an impact with your advertising dollar with classified advertising that reaches over 3 million readers!

Your newspaper representative can provide complete details.
The 2nd Network is a program of the MMA, phone 800-279-2979

MISCELLANEOUS

SPECTRUM TRIPLE PLAY

TV, Internet & Voice for \$29.99 ea. 60 MB per second speed. No contract or commitment. More Channels. Faster Internet. Unlimited Voice. Call 844/290-5838

A PLACE FOR MOM

The nation's largest senior living referral service. Contact our trusted, local experts today! Our service is free/no obligation. Call 844/347-2104

DONATE YOUR CAR

truck or boat to Heritage For The Blind. Free 3-day vacation, tax deductible, free towing, all paperwork taken care of 800/439-1735

MISCELLANEOUS

DISH NETWORK

190+ channels. Free install. Free hopper HD-DVR. \$49.99/month (24 mos.) Add high speed internet - \$14.95 (where avail.) Call today & save 25%! 855/562-4309

STOP OVERPAYING FOR YOUR PRESCRIPTIONS!

Save! Call our licensed Canadian & International pharmacy, compare prices & get \$25.00 OFF your first prescription! Call 877/210-2257 Promo Code: CDC201725

HIRE YOUR HELP HERE!
One phone call & only \$279 to reach a statewide audience of 3 million readers!!!
1-800-279-2979

The real effects of DRINKING & DRIVING

Almost 30 people in the United States die in motor vehicle accidents that involve an alcohol-impaired driver every day.

= 1 every 48 death minutes

Drunk driving costs the nation billions each year

Alcohol-related crashes total more than \$5.1 billion annually

But more important, our children are at risk

About half of the 181 child passengers

ages 14 and younger who died in alcohol-impaired driving crashes in 2009 were riding in the vehicle with the alcohol-impaired driver.

Have a Safe & Happy New Year 2018

THE STAR HERALD WISHES ALL OUR READERS AND ADVERTISERS A SAFE AND HAPPY NEW YEAR IN 2018.

Source: carinsurancecomparison

Thanks to these businesses for taking pride in their community and sponsoring this promotional page!

- Agri-Energy, LLC/Gevo
- Blue Mound Area Theatre
- Cattnach Insurance
- CHS Farmer-Owned with Global Connections
- Connell Car Care
- Continental Western Group
- Cragoe Realty
- Eisma & Eisma
- Estenson Company, Inc.
- Exchange Bank-Luverne Member FDIC
- First Farmers & Merchants Member FDIC
- Hartquist Funeral Home Luverne Chapel
- Heidebrink & Associates
- Jensen Management Services, Inc.

- Ketterling Services, Inc.
- Klosterbuer & Haubrich
- Lewis Family Drug
- Luverne Country Club
- Luverne Lanes
- Luverne Schools
- Mark's Plumbing, Heating and AC/LLC.
- McClure Electric
- Meulebroeck & Taubert Co.
- Minnwest Bank Member FDIC
- Papik Motors
- Real Estate Retrievers
- Rock County
- Community Transit Serving Rock County

- Rock County Chiropractic
- Rock County Opportunities, Inc.
- Rock County Star Herald
- Rock Veterinary Clinic
- S&S Carwash
- Skattum's Confinement/Superior Buildings
- St. Catherine Church
- St. John/Little Lambs
- Stroeh's Auto Center
- Sudenga Communications
- SW Mental Health
- Teals Market
- Vander Kooi Law Office