



Rock County STAR HERALD

Rock County's oldest business, printing since 1873

Thursday, November 9, 2017

District voters head to polls Tuesday to decide referendum questions

By Mavis Fodness

Voters in the Luverne School District turned out early to cast ballots for Tuesday's \$23 million bond referendum special election.

As of 5 p.m. Monday, 177 absentee ballots were received, according to Rock County Auditor-Treasurer Ashley Kurtz.

Last week Kurtz said her staff was busy distributing and witnessing ballots, more so than in any other school election.

"This is insanely busy," she said. "I've never seen so many people in early for a school vote."

In the 2015 school election there were 12 absentee ballots cast. In 2011 that number was 35.

Kurtz speculated the increase is due to the state's no excuse absentee vote, where voters don't need to state a reason to vote early. Many residents may have taken advantage of the convenience for this election, she said.

A single polling place was open in the middle-high school gym Tuesday for in-person voting.

It opened at 10 a.m. By 2 p.m. more than 400



Mavis Fodness photo/1109 Early School Vote
A steady stream of people vote in the school bond referendum election Tuesday morning.

people had participated. Polls closed at 8 p.m.

District residents were asked two ballot questions.

The first question asked voters to approve \$16 million for building expansions and improvements to the district's three schools.

The second question asked voters to approve an \$8 million performing arts center.

Both questions require a simple majority vote to pass.

Final results were unavailable at press time. Check next week's paper for final results.

Hatchery to join shrimp harbor in Luverne

By Lori Sorenson

A shrimp hatchery will now join the already planned harbor and water treatment facility going up next year on nearly 60 acres along I-90 west of Luverne.

The combination of all three trū Shrimp projects adds up to \$100 million in new construction and 100 new jobs in Luverne.

The harbor and water treatment costs are estimated at \$88.5 million and the hatchery will add another \$12 to \$14 million in construction over the next two years.

"Luverne is about to experience the largest economic development opportunity in its history," Mayor Pat Baustian said. "The building project is happening quicker than we expected."

Baustian and city staff met with trū Shrimp officials Monday morning, Oct. 30, about the hatchery proposal and the need for more land.

Two days later a press release announced the company's plans for the hatchery in Luverne, rather than in Marshall as was originally planned.

"From a bio-security aspect we have been concerned about a hatchery being close to a harbor," said Michael Ziebell, trū Shrimp president and CEO.

"However, in our continuing development we have had an engineering and process breakthrough that enables the hatchery and harbor to share the same campus."

In doing so, the company will benefit from dual use of the water treatment plant between the hatchery and harbor.

Trū Shrimp will still lease space in Marshall for executive and support services, and the city will be the site for a future harbor and hatchery as the company intends to one day have several harbors around the state.

Meanwhile Luverne will provide 28 acres for the 42,000-square-foot trū Shrimp hatchery next to the 30 acres already set aside for the free-standing water treatment structure and harbor.

The harbor's footprint will be the size of four football fields long and one football field wide, with nine acres under one roof.

According to Mayor Baustian, the \$250,000 worth of property is a fair trade for resulting economic progress. "If we can give 58 acres and get 100 jobs and \$100 million in construction, I'd do that again any day of the week," Baustian said.

The company will break ground next spring for the hatchery and

Shrimp hatchery/see page 8A



Mavis Fodness photo/1109 Corn Harvest 2017

Almost a dozen trucks wait to unload corn late Thursday afternoon, Nov. 2, at CHS Luverne location. Local farmers made significant progress in the corn harvest in the last week and are about 75 percent complete. As of Monday, the corn pile at the elevator is at 100,000-plus bushels.

Corn harvest 2017 slow, but local yields hold steady



By Mavis Fodness

Corn harvest continues to lag behind the five-year average with about a quarter of this year's crop still in the fields locally.

"Guys are slowly plugging away at it," said CHS Magnolia manager Brad Skattum Monday.

The slow pace puts local producers a little in front of the statewide average.

Across Minnesota producers advanced to 60 percent complete, according to the state's latest USDA crop progress and condition report released Monday.

Last week corn harvest was at 38 percent complete.

The pace is 12 days behind the five-year average of 87 percent complete, according to the weekly report. Last year at this time farmers were 84 percent complete in combining corn for grain.

The cool, damp weather has been a hindrance to this year's harvest. "Corn has been wetter than previous years but the yield is good," Skattum said.

Grain brought into the Magnolia facility is at moisture levels of 18

Rock County corn harvest slow but plentiful/continued on 5A

Radio personality to speak at Veterans Day Banquet Saturday

Rock County Veterans Service Officer and manager of the Herreid Military Museum Dave Haugom recently announced that radio talk show host and television commentator Dennis Prager will be the guest speaker at the Veterans Day Banquet Saturday, Nov. 11, in Luverne.

His speech will focus on heroism, military service and global safety, and his appearance is sponsored by Warren G. Herreid II and Jeannine M. Rivet.

The event at Grand Prairie Events on South Estey Street is a fundraiser for the Herreid Military Museum in the Rock County

Veterans Memorial Building.

Social hour begins at 5 p.m. with program and dinner to follow at 6 p.m.

Tickets cost \$30 and are available by calling the Herreid Military Museum at 507-283-4061.

Prager's syndicated radio talk show has been reaching millions of listeners each week nationwide,

Monday through Friday, from his home station in Los Angeles since 1999.

He's appeared on Fox and Friends, Red Eye, Hardball, Hannity, CBS Evening News, The Today Show and many others.

Veterans Day/See page 2A



Mavis Fodness photo/1109 Quality Printing

Mark and Annie Opitz stand inside the former Blue Mound Banquet and Meeting Center on West Hatting Street in Luverne. The couple is remodeling the building, including installing a new front door (as seen in the background) at the new location of their current Main Street business, Quality Printing.

Quality Printing moving to former banquet center

By Mavis Fodness

A familiar Main Street business will have a new Luverne home in January.

Quality Printing owners Mark and Annie Opitz purchased the former Blue Mound Banquet and Meeting Center last month.

The facility on West Hatting Street triples their current business space.

"It's a little bittersweet," Annie said. "We had our daughter's wedding reception here."

The banquet center had hosted social and community events since 2001.

As home to Quality Printing, the facility will be involved in weddings by way of designing and printing invi-

tations, banners and other creations.

The Opitzes plan to move into the 78,000-square-foot facility by Jan. 1, and remodeling has already begun.

The carpet and the dance floor have been removed and a new front door is being cut into the building's northeast side which will be the customers' entrance and showroom and office reception area.

The former meeting center's front doors will be for order pickup.

The receiving room on the south end will be dedicated to vehicle graphic installation.

"This is extremely exciting," Mark said.

Quality Printing/See page 5A



COMMUNITY CALENDAR

Meetings

Sanford Luverne Pink Ladies will meet at 1:30 p.m. Monday, Nov. 13, in the Blue Mound Room of the hospital.

Regional Autism Network Group will meet from 6:30 to 8:30 p.m. Monday, Nov. 13, in Worthington High School media center. Call Allison Eitrem 920-6334 with questions.

Beaver Creek Township Board will meet at 7:30 p.m. Monday, Nov. 13, in the township hall.

Blue Mound Cemetery Association will meet at 7 p.m. Monday, Nov. 13, at the Dick and Dolly Remme home.

Matthew 6 Board of Directors will meet at 7 p.m. Monday, Nov. 13, at the Luverne Pizza Ranch.

Rock County VFW Post 2757 will meet at 7 p.m. Tuesday, Nov. 14, in the Herreid Military Museum. Call 449-0632.

Vienna Township Board will meet at 7 p.m. Tuesday, Nov. 14, in the Kenneth Community Center.

MS Support Group will meet at 7:30 p.m. Thursday, Nov. 16, at Southwest Health and Human Services in Luverne. All persons with MS and their family and friends are invited. Call 283-2069 or 283-2964

Meditation and Mindfulness Practice will meet at 7 p.m. Wednesday, Nov. 22, in Hilger Commons at 215 N. Cedar Street in Luverne. Call Kim at 507-353-0041.

Narcotics Anonymous will meet every Thursday evening at 6:30 p.m. at the Steen Reformed Church. Contact Robert for more information 507-329-2642.

Women's Alcoholics Anonymous meets at 8 p.m. Mondays in the United Methodist Church.

Narcotics Anonymous meets at 7 p.m. Fridays and for basic text study at 7:30 p.m. Tuesdays in the basement of St. Catherine Catholic Rectory, 203 E. Brown St., Luverne. Use east door. For more information call 507-220-0137.

Alcoholics Anonymous meets at 8 p.m. Wednesdays and Saturdays in the United Methodist Church, Luverne. Call 605-321-4324.

Alcoholics Anonymous meets from 8 to 9 p.m. every Tuesday in Runals Hall, Edgerton. Call Naomi, 507-215-2956.

'Go West' at Luverne Elementary Nov. 9

Luverne Elementary second- and fourth-graders will celebrate the spirit of our American pioneers when they present their music program, "Go West" at 2 p.m. Thursday, Nov. 9, in the Cardinal Gym. The public is invited to attend.

Hardwick Veterans Day banquet Nov. 11

The Hardwick American Legion Veterans Day Banquet will be Saturday, Nov. 11, at the Legion Hall. Social hour begins at 6 p.m. with a dinner at 6:30 p.m. A program will follow featuring guest speaker Richard May of Luverne, first sergeant combat veteran, U.S. Army Retired Ranger.

'All About Dairy' slated for Nov. 11

The Rock County Cloverbuds will have their meeting, "All About Dairy," from 10 to 11:30 a.m. Saturday, Nov. 11, at the Raak Family Dairy Farm, 2256 70th Ave., Jasper.

The Cloverbud program is free and open to all enrolled in 4-H. To register contact program coordinator Chelsey Asche, 507-283-1302 or joh13978@umn.edu.

JO Volleyball sign-up Nov. 12

Junior Olympic Volleyball sign-up is at 5 p.m. Sunday, Nov. 12, in the Rock County Library. Use the west entrance.

Give blood Nov. 13

Sanford Luverne and Community Blood Bank will host a blood drive at Sanford Luverne from 11 a.m. to 1:30 p.m. and from 3-6 p.m. Monday, Nov. 13. Donors must be at least 17 years old (16 with parent consent form found at website below), weigh 110 pounds or more and be in good health the day of donation. A valid I.D. is required. Donors should eat and drink plenty of fluid prior to donating. For information, call 507-283-2321 or go to www.cbblifeblood.org.

Steen Reformed hosts meal Nov. 15

The Steen Reformed Church invites the public to enjoy a meal and fellowship from 5:30-7:30 p.m. Wednesday, Nov. 15, at the church.

Guitar quartet at library Nov. 17

The Minneapolis Guitar Quartet will play at 2:30 p.m. Friday, Nov. 17, at the Rock County Library in Luverne.

The foursome of Joseph Hagedorn, Maja Radovanlija, Ben Kunkel and Wade Oden will perform a variety of acoustical selections ranging from classical to rock and roll. Their appearance is made possible through the state's Clean Water, Land & Legacy Amendment. For more information contact the library at 507-449-5040.

Aanenson sells locksmith business to Harsma

By Lori Sorenson

Stephan Harsma is buying Keith Aanenson's locksmith business, and a ribbon-cutting Monday afternoon made the deal official.

"There's a lot to know," said Harsma, who has been training with Aanenson for several weeks.

"It's like putting together a bunch of tiny little puzzle pieces. When you take apart a lock, everything has its place ... In order to have the key turn properly, you need to have the pins lined up in the proper places."

In general, his Harsma Locksmith services include vehicle unlocks, key duplication, installing and changing locks and 24-hour emergency service.

The 29-year-old Hills man has a bachelor's degree in psychology and served in the Marines as 0612 field wireman.

His military contract was complete last year, and the Hills-Beaver Creek High School graduate is now back home with his parents, Jim and Julie Harsma.

He said locksmithing is a good opportunity for him, and after several weeks of training with Aanenson, he said he's mastering the trade.

"It definitely takes a lot of patience," Harsma said. "Everything has its specific spot in order to get the bigger picture."

For Aanenson, passing on his trade to a new generation is something he didn't take lightly.

Aanenson was a locksmith for over 20 years after taking over the business from his father, Russell Aanenson, a 25-year locksmith veteran.

He said it was the perfect job for a retired police chief



Lori Sorenson photo/1109 aanenson harsma locksmith

Stephan Harsma, Hills, (right) is buying Keith Aanenson's locksmith business,

— Aanenson worked in the Luverne Police Department for 40-some years, 19 as chief of police.

He retired in 1994 when city and county law enforcement merged under the Rock County Sheriff's Office.

He said locksmithing requires a similar set of skills as police work.

"You have to be service-oriented and you have to like people," Aanenson said. "I like people and I like helping people."

But Aanenson is 75 now and said he's ready to retire.

"You get calls at all hours of the day and night," he said. "A lot of people call when they're locked out of their houses."

He said the job includes a lot of vehicle unlocks, and he said there are plenty of interesting stories behind the calls.

"Someone called to say they were locked in a bathroom for 45 minutes, and they were distressed," Aanenson said.

But it wasn't full-time

work, so he has worked in the locksmith jobs with his schedule of numerous volunteer duties for local organizations.

For the time being, Harsma said he's treating the business as a full-time job until he masters the trade.

"I'm hoping to provide the same quality service that Keith has provided the community for the past 20 years," Harsma said.

He can be reached at 605-553-8465 or jharsmax@gmail.com.

Veterans Day/ from page 1A

His syndicated column, "Creators Syndicate," is published in newspapers across the country and on the Internet. His writings have also appeared in major national and international publications including, Commentary, The Weekly Standard and The Wall Street Journal.

Prager was a Fellow at Columbia University's School of International Affairs where he did graduate work at the Middle East and Russian Institutes.

He has taught Russian and Jewish history at Brooklyn College and was appointed by President Ronald Reagan to the U.S. Delegation to the Vienna Review Conference on the Helsinki Accords.

Prager has lectured on all seven continents, in 45 U.S. states and in nine of Canada's 10 provinces.

In 2011 he co-founded Prager University, which are a series of Internet courses that cover the disciplines of political science, history, philosophy, religion, economics and psychology.



Mavis Fodness photo/1109 Lorna Bryan Retirement

Bryan celebrates retirement from job as Chamber assistant

Luverne Area Chamber Administrative Assistant Lorna Bryan retired from her position Oct. 27 and returned for a two-hour celebration in her honor Monday night at Sterling's Café and Grill in downtown Luverne. Chamber representatives are currently interviewing for a new administrative assistant.



Dial-A-Specialist

Your One Stop Guide to Local Businesses

<p>DR. MICHAEL SMITH Most Insurance Accepted WWW.ROCKCOUNTYCHIROPRACTIC.COM 283-2561 • 103 E. MAIN, LUVERNE Monday 7:30 a.m. - 6 p.m. • Tuesday 7:30 a.m. - 3 p.m. Wednesday 7:30 a.m. - 6 p.m. • Thursday 7:30 a.m. - 1 p.m. Friday 7:30 a.m. - 5 p.m.</p> <p>• Chiropractic</p>	<p>Chantel Connell Sales Representative 117 W. Main, Luverne, MN 507-283-2333</p> <p>Rick Peterson General Manager</p> <p>• Advertising</p>	<p>LUVERNE HEALTH & WELLNESS Codie Zeutenhorst, D.C., CAC ✓ Acupuncture ✓ Chiropractic Care ✓ Family Care ✓ Sports Injuries ✓ Kinesiotape ✓ Auto & Work Injuries Acupuncture and Massage Available Kris Van Der Brink M.T. & Amy Rosales M.T. www.luvernechiro.com 507.449.4400 109 S. Freeman Ave. Luverne, MN</p> <p>• Chiropractic</p>	<p>COMRAY COMPUTERS Computer Repair and System Builder</p> <p>Ray Hansen 1726 140th Ave., Luverne, MN 56156 507-669-2621 comraycom@gmail.com</p> <p>• Computer</p>
<p>Rock County EYE CLINIC 507-283-2345 102 N. Freeman Ave. Luverne, Minnesota</p> <p>• Eye</p>	<p>Papik MOTORS 1-90 Luverne, MN Box 536 • 801 West Commerce Road Luverne, MN 56156 (507) 283-9171 (800) 634-7701 www.papik.com</p> <p>• Automotive</p>	<p>Luverne MINNESOTA City Offices Love the life! PO Box 659, Luverne, MN 56156 507-449-2388 (24 hour voice mail) www.cityofluverne.org</p> <p>• City</p>	<p>Dakota Land Surveying and Engineering, Inc.</p> <p>Steven B. Kor Professional Engineer Registered Land Surveyor</p> <p>2000 W. 42nd Street, Suite B-6 Sioux Falls, SD 57105 605-334-4882 605-334-5745 Fax</p> <p>506 Almar Luverne, MN 56156 507-283-3803 steve.dis@midconetwork.com</p> <p>• Land Surveying</p>

Hoffman joins local county attorney office

By Mavis Fodness

Two months into the job as an attorney with Klosterbuer & Haubrich LLP in Luverne, Dana Hoffman has made herself at home.

"This is my dream job right now. I knew I wanted a small town feel," she said.

Hoffman grew up in Sioux Falls, graduating from Roosevelt High School in 2006.

It was when she was taking undergraduate classes at Hamline University in the Twin Cities that studying to become an attorney took focus.

A philosophy and global studies major, Hoffman joined the university's mock trial team.

"That's when I knew I wanted to become a lawyer," she said.

She also knew she wanted to see the world.

After high school Hoffman was a Rotary exchange student to France. Before entering law school for international law she studied abroad in West Africa for a semester.

Spending several months away from home, however, wasn't to the homesick Hoffman's liking, and she chose to attend law school a little closer to home.

She graduated from St. Thomas Law School in Minneapolis in 2016.

A clerkship for Mower County courts in Austin brought her to focus on starting her career as an attorney close to home. Luverne was a perfect fit.

Her parents, Steve and Terri Hoffman, are Luverne High School graduates, and

she has several cousins living in the area including one across the street from her Luverne home.

Luverne's distance from Sioux Falls is ideal.

"I am just far enough away from my parents," she said.

Hoffman's ability to communicate in several languages has allowed her to develop connections with people she met on trips to China and Mexico and while working summers in Alaska.

She admits, however, that her multilingual skills may not be used often in southwest Minnesota, but she is already using her other interests to connect locally.

Hoffman joined the Grace Lutheran Church choir and will participate with the Carnegie Minstrels playing French horn.

"I like to be involved and I like being well rounded," she said.

Hoffman has assisted the high school marching band and will help coach the high school mock trial team this winter.

"I love the competition," she said.

It was the competition of mock trial that led to an interest away from international law to criminal law.

She exercises a bit of that knowledge as she assists Don Klosterbuer and Jeff Haubrich with county attorney duties as well as helping the general public with a variety of legal issues as a small town attorney.

"This job fits my personality well," she said.



Mavis Fodness photo/1109 GEP Miracle 34th St

Fifty-four people will have a hand in the Green Earth Players' production of "Miracle on 34th Street, The Play" opening Friday at the Palace Theatre in downtown Luverne. Cast members available for a photo last week include (front left) Xavier McKenzie, Sarah Prohl, Zoe Perkins, Angel Bruns, Brianna Kinsinger, Augusta Papik, (second row) Leif Tollefson, Bob Zinnel, Hazel Sailor, Shawn Kinsinger, Nathan Kinsinger, Camden Hoven, (back, standing) Mary-Frances Ladd, Scott Wessels, Jo-Hannah Ladd, Annabell Petronek, Joseph Stearns, Holly Anderson, Rylee Anderson, Stephen Harsma, Mela Jarchow, April Prohl, Jim Harsma, Josie Scholten and Mike Petronek.

'Miracle on 34th Street' opens Friday for first of seven performances

By Mavis Fodness

A childlike excitement surrounds this year's Green Earth Players' annual fall production when the group performs "Miracle on 34th Street."

The curtain goes up on the first of two weekends, Nov. 10-12 and Nov. 16-19, with Friday and Saturday performances at 7:30 p.m. and the Sunday performance at 2 p.m. both weekends at the historic Palace Theatre in downtown Luverne.

An extra Thursday performance at 7:30 p.m. has been added Nov. 16. "Miracle on 34th Street, The Play" is adapted by the Mountain Community Theatre and is based on the motion picture "Miracle on 34th Street."

While the play could take place in contemporary times, director Bruce Kurtz decided that the 1950s was a better setting.

"I don't think doing it the way we live today really fits," he said. "Any belief (in Santa Claus with today's technology) — we don't have much Christmas spirit."

The American Christmas comedy-drama opens in New York during the weeks between Thanksgiving and Christmas Day.

Focus is on the Macy's Thanksgiving Day Parade and the hiring of someone to depict Santa. The Santa claims to be the real thing and is soon taken to court as an imposter.

Luverne's Shawn Kinsinger plays Kris Kringle.

"I dig it," Kinsinger said during last week's rehearsals. "It is fun the way the kids get all excited about it — I get excited."

Real mother and daughter team of Hollie Anderson and Rylee Anderson play department store employee

Performances are
Nov. 10-12 and
Nov. 16-19,
with Friday and Saturday
performances at 7:30 p.m.
and the Sunday
performance at 2 p.m.
both weekends at the
historic Palace Theatre.
An extra Thursday
performance at 7:30 p.m.
has been added Nov. 16.

Doris Walker and her daughter, Susan.

It is Susan who tries to convince her mother and the courts that Santa Claus is real.

"She always bugs me about memorizing lines," said Rylee. "There is also less awkwardness during hugging scenes."

At first, Holly wasn't planning on audition for the Green Earth Players' production but changed her mind.

"It will be creating memories for us," she said.

Other cast members and their roles are as follows:

- Joseph Stearns as the Walkers' neighbor Fred.
- Josie Scholten as Shellhammer.
- Cheryl Nath as Sawyer/postal worker Alice.
- Scott Wessels as Mara.
- Xavier McKenzie as Mara Jr.
- April Prohl as Halloran and foster mother.
- Betty Mann as a rich lady.

- Mike Petronek as drunken Santa and Finley.
- Dean Luethje as Dr. Pierce.
- Jim Harsma also as Dr. Pierce.
- Bruce Kurtz as Macy.
- Stephan Harsma as Gimbel.
- DJ Luethje as Duncan and postal worker Louella.
- Bob Zinnel as Judge Harper.
- Sarah Prohl as a Dutch girl.
- Camden Hoven as Elf J/Johnny.
- Jo-Hannah Ladd as Elf Q/bag lady.
- Mary-Frances Ladd as Elf R/Sharon's mother.
- Christen Kessler as Elf W/Johnny's mother.
- Brianna Kinsinger as caroler/Sharon.

- Hazel Sailor as caroler/child 1.
- Augusta Papik as caroler/child 2.
- Leif Tollefson as Elf Z.
- Nathan Kinsinger as caroler.
- Angel Bruns as caroler/Megan.
- Zoe Perkins as caroler.
- Annabell Petronek as photographer.

Backstage cast is Anissa Hanson-Vis, Mela Jarchow, Xavier McKenzie, Dianne Ossenfort, Tina Petronek, Casey McKenzie, David Vis, Phil Voigt, Lynette Stensland, Teresa Kinsinger, Kyle Lessman, Hayley Luther, Teri Ebert, Manda Steensma, Kim Rockman and Salon 75 staff.

The play is in two acts with an intermission. It is about two hours in length.

Cost is \$14 for adults and \$7 for students.

Advanced tickets can be purchased at the Palace Box Office, 106 E. Main St., or calling 507-283-4339. The Box Office is open Monday-Friday from noon to 5 p.m.



Submitted photo

'Green Up Our Community' 2017

Prairie Rose Wind Farm employees completed community service projects earlier this month in Hardwick. Wind farm operators, Enel Green Power of North America, sponsored the company-wide event called "Green Up Our Community Week." Employees Pete Johnson and Chris Bressler spend one day working around Hardwick cleaning the city park and getting flowerpots ready for winter.



Blue Mounds acquires Yellowstone breeding bull

The Blue Mounds State Park has acquired a new breeding bull with Yellowstone genetics to the herd.

"We've been trying to acquire Yellowstone genetics for several years and are excited to be able to bring them in," said park manager Chris Ingebretsen.

The 2-year-old bull is a descendent of the Yellowstone National Park herd that has highly sought-after genetics.

Getting a bull from Yellowstone is difficult, according to park officials, since the National Park Service does not allow the removal of bison that

live there.

To obtain this bull, researchers at Colorado State University in Fort Collins used artificial insemination, resulting in the birth of this bull.

"The addition of the Yellowstone bull is another large step for the Minnesota Bison Conservation Herd," said DNR regional naturalist Alexander Watson.

"Genetics from the Yellowstone population are not currently represented in our herd. Diverse genetics allow for healthier populations. The introduction of this breeding bull's genetics will reinforce

the mission of the Minnesota Bison Conservation Herd, which is to preserve the bison for future generations."

The Yellowstone bull's genetics are desirable for three reasons.

First, Yellowstone genetics are mostly missing in the Minnesota Bison Conservation Herd.

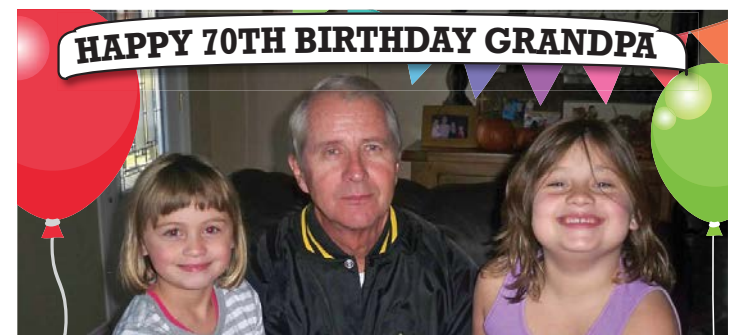
Secondly, the Yellowstone herd is not known to have cattle genes.

And finally, the Yellowstone herd is one of the few bison herds where nature has shaped its genetics, not human breeding programs.

Less than 1 percent of all American plains bison tested so far have been found to be free of cattle genes.

Genetic testing on Minnesota's bison herd between 2011 and 2014 found them to be largely free of any genetic material that would have come from cross-breeding cattle.

The bison at Blue Mounds and Minneopa state parks are part of the Minnesota Bison Conservation Herd, which is managed through a formal agreement between the DNR and Minnesota Zoo to preserve American plains bison and grow the herd.



We Love You, Madison and Samantha

GARAGE SALE

SCHOMACKER
FLOORING & APPLIANCE

Saturday
NOVEMBER 11

9 a.m. - 3 p.m.

20 Freezer-Top Refrigerators
\$150-\$250

20 Coil-Top Ranges
\$50 each

At the Schomacker Cleaning Shop
126 W Main | Luverne

Other Used and Closeout Appliances and
Papa Larry's Pretzels also Available at the Sale



Sweet corn harvest was a family affair on our farm near Kenneth. This husking party in 1979 included (from left) Linda, Lavelle, Lisa, Lana, (me) and our mom, Rachel Kroontje.

When I grow up ...

Childhood garden chores now distant romantic memories

When I grow up, I'm going to tend a garden.

I'll work the black dirt, breathe in the earthy air and revel in the promise of a new growing season.

I'll diligently combat birds, bugs and weeds, and the garden hose will be on hand for when and where it's needed.

I'll serve corn on the cob, crisp lettuce greens and sliced tomatoes with summer barbecues, and we'll have juicy red strawberries atop ice cream or short cake for dessert.

To preserve our bounty, I'll freeze sweet corn and berries in zippy bags and seal tomatoes and green beans in Mason jars.

I'll store potatoes in a large bin in the fruit cellar where I'll also hang onions from the ceiling in nylon stockings to access later in the winter.

All this romanticism about gardening is ironic, coming from the kid who vowed she's never have a garden when she grew up.

Our garden on the farm near Kenneth was the size of a football field (it seemed), and at that time I disliked garden chores. My sisters and I were encouraged to get our work done in the cool of the morning, but we foolishly procrastinated until the heat of the late afternoon.

At the time, they seemed like big responsibilities, but in hindsight, a half hour of concerted effort usually did the job.

We picked bugs off strawberries and potatoes and swatted mosquitos off ourselves. My older sister and I had the added task of policing our younger sisters who often ate more strawberries than they put in



ON SECOND THOUGHT

By Lori Sorenson, editor

their plastic ice cream buckets. Sometimes we pulled weeds, but not until later in the season when the difference between quack grass and green beans was easier to see.

These garden-side chores we disliked. The harvest-side duties were more interesting.

Like the green bean assembly line at the kitchen table, for example.

Bean tails flew through the air in our race to get through our piles first, and we'd take turns cranking the handle on the "snijboontjes" slicer. (We later learned this was the Dutch word for French-cut beans).

Husking sweet corn also became a competition to shuck the fastest with the least silk left behind.

The fall potato harvest was the final garden sport of the season. Dad plowed them up and we followed behind collecting the dirty spuds in our buckets, which were emptied into the loader bucket on the tractor at the end of the rows.

The reward was a ride with the potatoes back to the cellar, and Dad would raise the bucket high in the air for what felt like a thrilling amusement park ride.

Today I can buy a can of vegetables for 80 cents on sale, and potatoes remain the cheapest item in the produce aisle. But with the popularity of community gardens and food forests, I'm starting to rethink my take on homegrown produce.

Maybe I'll till up some dirt in the back yard.

... When I grow up.

Your input is needed if we are going to end poverty in this community

If poverty is to be ended in our community, the women are going to need a little help from the men.

When the Blandin Foundation-sponsored Leaders Partnering to End Poverty (LPEP) group met for the first time Oct. 26, more than 40 women were in attendance — and one man.

One. Many men in this community are not available for a monthly half-day meeting during working hours for the next six months, but many are. How about the retired guys? Some of the farmers? Stay-at-home dads? Anyone with ideas about how to end poverty?

One of the main objectives of LPEP is "to bring all of the voices" to the table. That can't happen if 95 percent of the voices are female. To effectively address poverty in our community, the group needs the input and insight of dads, grandpas, brothers and neighbors. Maybe you?

The group will meet monthly from November through May. The remaining meetings are Thursdays

STAR HERALD EDITORIAL

By Brenda Winter, contributing writer

Nov. 16, Jan. 11, Feb 8, March 8, April 19 and May 10.

How could your perspective on poverty help transition others out of poverty? Maybe you've never been poor. The group could learn from you, too.

Even though the title includes the word "leaders," being a community leader is not a requirement for participation.

LPEP endorses the following assumptions:

- This is a leadership program to improve our capacity to reduce poverty.

- To change the culture of poverty, we need to build leadership skills across economic levels.

- Everyone in this program has

the ability to impact the issues surrounding poverty in this community.

- Persons in poverty are valuable assets in the community that often go untapped.

- Economic disparities detract from healthy community.

- There is no silver bullet — ending poverty requires long-term and sustained effort.

To register or for more information about the upcoming LPEP meetings in Luverne, contact Tom Sippola at tjsippola@blandinfoundation.org. The meetings are free and include meals.

So how about it? Do you think you have anything to say about ending poverty in Luverne? If so, we'll see you at Grand Prairie Events on Nov. 16.



Remembering Warren Herreid this Veterans Day

Last week Warren Herreid was laid to rest, and so many of you knew him far longer than I did.

I can't really remember how our paths crossed just 13 years ago, but for some reason he recruited me to chair the committee to raise funds for the perpetual care of the Rock County Veterans Memorial.

The Perpetual Care Committee was served well by Secretary Annabelle Frakes and committee members Bill Debates, Wendell Erickson, Gregg Gropel, Gaylord Keck, Kyle Oldre and Warren.

The committee raised over \$100,000 to care for the memorial for years to come.

Because of our time together working on the memorial committee, we became friends, and then again for some reason Warren asked me to be the featured speaker at the Memorial



FOR WHAT IT'S WORTH

By Rick Peterson, General Manager
Tollefson Publishing

Day program at Maplewood Cemetery a number of years ago.

To this day I am still not sure why he asked me. Public speaking isn't something you'll find on my resumé, but I accepted his request.

To say I was nervous the day of the speech would have been an understatement. As far as the weather conditions that day, it was sunny but not overly warm — yet I was sweat-

ing like a pig, no doubt due to nerves.

The speech wasn't much longer than 8 to 10 minutes, but the memories of giving the speech will last forever.

My mom was in the audience that day, and my dad was looking down from above. When it was all said and done that day, I think my parents were proud of what their son had to say.

For that I have Warren to thank. Rest in peace, my friend.

Prekker doesn't support branding expert's suggestion to construct mechanical nutcracker for tourism

To the Editor:

I'm all in favor of putting Luverne on the map, but I don't support the plans to construct a 75-foot-tall mechanical nutcracker in town for tourism.

We have a wonderful town with beautiful history and this nutcracker doesn't represent Luverne in the slightest.

The desire for this giant nutcracker came from community branding expert Roger Brooks who visited

Luverne looking for ways to increase tourism. I don't doubt his expertise, but visiting a town full of nutcrackers made his job of making us "different" exceptionally easy.

According to Brooks, it's all about how long people stay. "Get them [tourists] to stay two hours and spending will double. ... Overnight visitors spend four times that of day visitors."

This nutcracker isn't encouraging overnight visitors, it isn't even encouraging two-hour visitors. Yes,

we'd get tourism, but not the kind we really want, according to Brooks.

What better options do we have to increase tourism? According to the MN DNR page, Blue Mounds State Park, before its loss of the lake and the closing of the Manfred house, received nearly 50,000 more visitors than highest predicted visitors for the nutcracker.

Although we can't decide where the money would go toward the State Park, we can still provide funding that

could go toward projects like the Manfred house. Other tourism possibilities include funding a trailhead or bike rental building, Segway tours in town, an amphitheater or splash pad, a plaza or town square, Blue Mounds and State Park projects, bison tours, rock climbing programs, the local food forest in production, or the one of six drive-in theaters in Minnesota.

At a recent nutcracker committee meeting held Nov. 2, the nutcracker committee themselves referred

to this project as a "gimmick" to get people here. This is not a project with cultural or historical significance and value, it is an expensive effort to turn Luverne into a meaningless roadside attraction, and I'm disappointed that the numbers we bring in are more important than why we bring them in.

If we can't value ourselves, how will anyone else value us? Luverne deserves much better than this.

Evan Prekker, Luverne

E-mail: editor@star-herald.com Web site: star-herald.com
Phone: 507-283-2333 Fax: 507-283-2335

Published Thursdays by Tollefson Enterprises, POSTMASTER:
Send address changes to 117 West Main, P.O. Box 837, Luverne,
MN 56156. Periodicals postage paid at Luverne, Permit #33 and at
additional mailing offices.

General manager: Rick Peterson **News staff:**
Office manager: Deb Lusty Lori Sorenson, editor
Circulation manager: Jennifer Kor Mavis Fodness, reporter
Advertising: Chantel Connell John Rittenhouse, sports editor
Production manager: Abbe Kolar Esther Frakes, copy editor
Production: Heather Johnson

Rock County
STAR HERALD
Rock County's newspaper since 1873

(ISSN 0889-888X)
SUBSCRIPTION RATES

\$72 per year in Rock County; \$89 per year all other areas. Single copies \$1.25

Entire contents copyrighted by
Tollefson Publishing Roger Tollefson, publisher

The *Star Herald* encourages letters to the editor expressing the opinions of readers and intends to print all letters. Letters not meeting the guidelines will not be printed. The *Star Herald* will verify the authenticity of all letters. Letters must have the name of the writer, a signature and address.

Unsigned letters will not be considered. The *Star Herald* will edit for grammar, spelling and clarity. Any letters containing offensive language, libelous or slanderous material, or misleading or false information will be rewritten before being published. The *Star Herald* will not publish letters written with the sole intent to advertise or serve as a thank-you. Letters with more than 300 words may be edited. The deadline for letters is Monday 10 a.m. They may be delivered or mailed to the editor, *Rock County Star Herald*, P.O. Box 837, 117 W. Main St., Luverne, Minn. 56156.

ON THE RECORD

Dispatch report

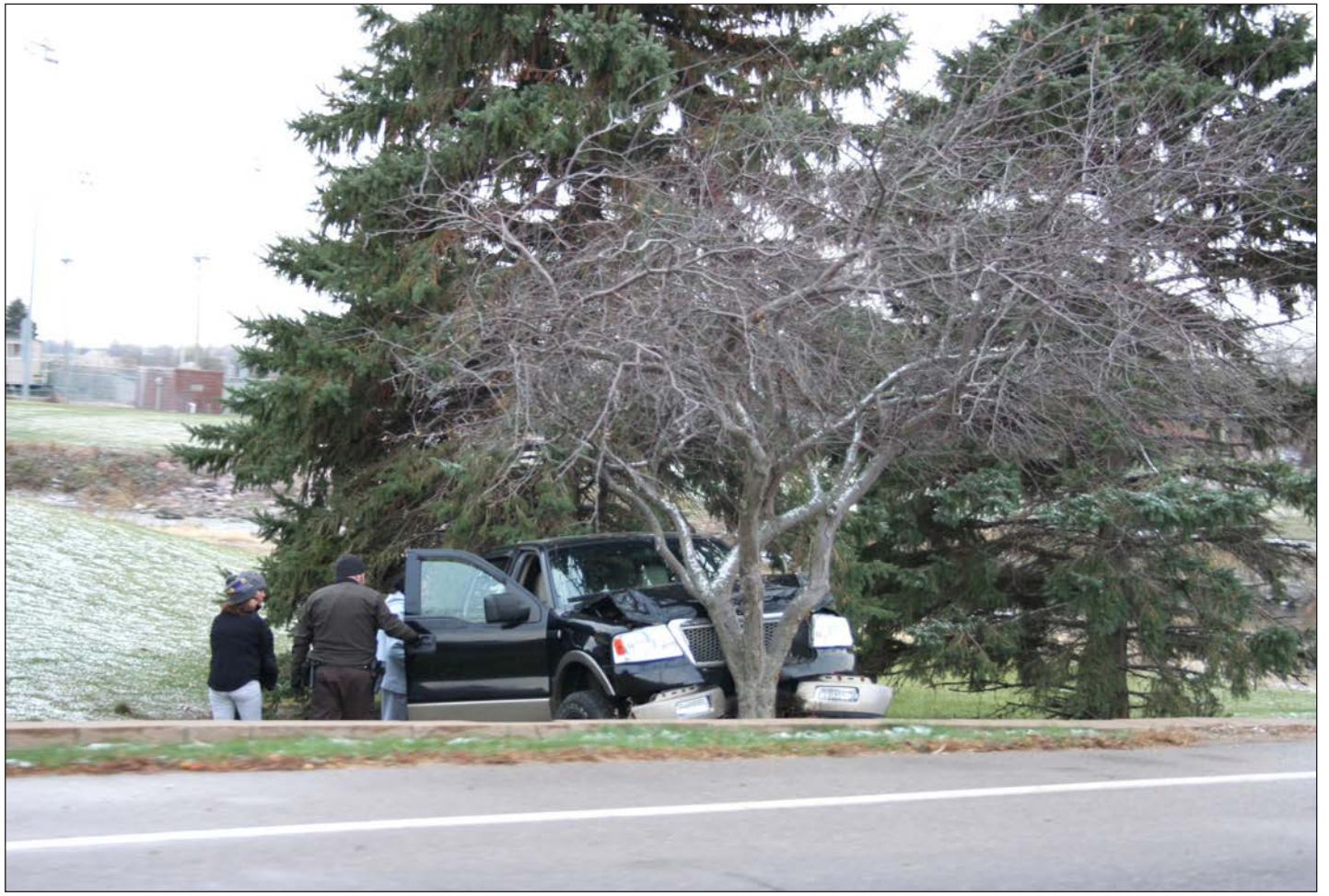
- Oct. 27**
- Complainant reported crosswalk lights are malfunctioning on Dodge Street.
 - Complainant conducted search warrant at Mead Court.
 - Complainant reported a Murray brand pink and purple bike that has been on East Park Street for days.
 - Complainant reported a pickup parked near Main Street is leaking fuel on the street.
 - Complainant requested deputy present for transfer of children.
 - Complainant reported bus stop arm hit on Robert Ave.
 - Complainant reported tower door open on 221st Street. Dispatch notified tower owner.
 - Ace Hardware reported theft.
 - Complainant called Law Enforcement Center and requested to speak with deputy regarding retrieving property from his home. Deputy spoke with complainant.
 - Complainant requested deputy to do walk-through of vacant home with him.
- Oct 28**
- Complainant reported unable to contact subject for family emergency.
 - Complainant reported subject on 180th Ave. with rifle pointed toward hunters.
 - Complainant reported toilet paper blowing all over on County Road 6.
 - Complainant requested to speak with deputy regarding subject taking her car.
- Oct 29**
- Complainant reported that some patio chairs were stolen from her backyard.
 - Complainant requested an unlock.
 - Complainant reported probable theft of subject's cell phone.
 - Complainant reported railroad is damaged on 20th Ave. and caused damage to her vehicle.
- Oct. 30**
- Complainant reported three girls left school.
 - Complainant reported a gray Grand Caravan pulled up to her mailbox and left before she could get there. Then it went to the neighbors.
 - Complainant reported an AT&T van with Michigan plates that is driving around the area slow and acting suspicious.
 - Received a fax of a manure spill on 170th Avenue.
 - Deputy reported a stalled tractor. Driver is headed to town for some supplies; is having some hydraulic issues.
- Oct. 31**
- Complainant reported car parked on 131st St. is frosted over and appears to have people inside.
 - Complainant called and hung up. Having issues with son, thinks it will be fine.
 - Complainant reported theft of a dealer plate. Entered stolen.
 - Complainant requested assistance with an uncooperative patient.
 - Complainant reported farm trucks are driving fast and blowing the stop sign. Requested extra patrol.
 - Complainant reported a trailer house hit her car and kept going. She followed it on foot and got it to stop.
 - Complainant reported he almost hit a tractor pulling an auger on 71st Street and County Hwy. 11. The farm vehicle had no lights on and was traveling south from location.
 - Complainant reported his loaded grain wagon lost a wheel and bent an axle on the gravel road across from 80th Avenue. Complainant wanted the Sheriff's Office to be aware as there is some traffic on the roadway and the scene is not very well lit at this time. Complainant is working on getting help to move the wagon.
 - Complainant reported two of her children are missing.
 - Complainant reported a female in a long black dress and no shoes who was hiding at the Holiday Station. A white Grand Prix was driving around looking for her. Complainant approached female who was crying and she advised it was her boyfriend but she did not want complainant's help. Female is now at BP Gas Station.
- Nov. 1**
- Complainant reported vandalism on 150th Avenue.
 - Complainant came to Law Enforcement Center and requested to speak with a deputy. Deputy spoke with complainant.
 - Complainant reported an injured deer near the roadway on 211th Street. Complainant believes it was hit by a vehicle and is now suffering.
- Nov. 2**
- Complainant came to the Law Enforcement Center and requested to speak with a deputy regarding suspicious activity on Linden St.
 - Complainant reported subject hit him and is trying to break the windshield on his truck.
 - Complainant called Law Enforcement Center and requested to speak with a deputy about subject.
 - Complainant reported an accident involving a passenger vehicle and a tractor. No injuries, transferred to State Patrol.
 - Complainant reported suspicious activity when a customer attempted to write a check for \$400+ at Shopko.

In addition, officers responded to 1 motor vehicle accident, 4 deer accidents, 3 vehicles in the ditch, 3 escorts, 16 ambulance runs, 2 parking violations, 4 animal complaints, 3 burn permits, 1 child maltreatment, 3 narcotic laws, 7 log sheets, 6 drug court tests, 2 fire calls, 1 driver's license check, 1 stalled vehicle, 7 road and drive laws, 25 traffic stops, 1 abandoned 911 call, 1 debris on road call, 2 roadside assistance calls, and 1 mental case.

REAL ESTATE TAXES DUE

The second half real estate tax installment on **AGRICULTURAL PROPERTY** is due **November 15, 2017**. To avoid penalty, payment may be made at the Auditor-Treasurer's Office in the Courthouse or mailed to the Rock County Auditor-Treasurer **postmarked on or before November 15th**. Please keep in mind the post office deadlines when mailing in payments and remit the appropriate stubs to assure proper credit. Payments postmarked after November 15th **will** be returned for the tax and penalty due at that time.

ASHLEY KURTZ
ROCK COUNTY AUDITOR-TREASURER
 P.O. BOX 509
 LUVERNE, MN 56156-0509



Chantel Connell photo /1109 crash

Slippery roads blamed for wild ride

A slick road surface was to blame for a crash in Luverne City Park Monday afternoon, Nov. 6. According to information from the Rock County Sheriff's Office, 34-year-old Griselda Medina-Chavez, Magnolia, was traveling eastbound on Main Street over the Rock River Bridge when she lost control of her 2004 Ford pickup. The report states that the truck slid sideways down the south side of the embankment and struck a tree, with the momentum sending the back end around so the truck came to a rest facing north. According to the Sheriff's Office, there were no injuries and no one else was involved.

Quality Printing to move to former banquet center/from page 1A

No longer will vehicles be photographed and measured while parked outside. Indoors also means no waiting for temperatures to reach at least 50 degrees before application.

Quality Printing opened its Main Street doors in 1999 after the Opitzes worked on its business plan for two years.

They began as a small print shop, and as offset printing business dwindled they began adding other print-related services such as vinyl

cutting, large format printing, thermography and graphic design.

They have five employees and with the expanded space, Mark said they could possibly add three more employees to the business.

The expansion comes on the heels of Luverne's selection as home to a new shrimp harbor and hatchery location and the location for a readiness center for the combined Luverne/Pipestone National

Guard.

"We are super excited... as well as nervous," Annie said.

The couple almost dismissed the former banquet center as a possible location until a plan to move the front door made the building more usable.

For now the Opitzes plan to keep the banquet's room dividers in place.

The east half will be carpeted for offices, showroom and graphic artists. The room's

west half will house the production equipment and will receive a new resin floor.

Mark said they made full-sized paper templates of current equipment to make sure the facility was large enough.

"We are thankful that the community gave us a chance to earn their business," Annie said. "We are going to miss Main Street."

Quality Printing's current 2,500-square-foot building is for sale.

Harvest 2017 is slow but plentiful/continued from page 1A

to 20 percent. The ideal level is about 15 percent.

The state average is 19 percent.

Wet weather conditions could push the moisture levels higher, delaying completion of this year's harvest until later into November.

Skattum estimates most producers will wrap up the

corn harvest by week's end, if measurable snow predictions continue to miss the area.

According to reports so far, yield records could increase for the third straight year locally.

Last year Rock County producers increased the record corn yield for the county to 201.2 bushels per acre, up

from 198.8 set in 2015.

Soybeans also set a yield record last year with 61.9 bushels per acre.

Prices, however, were not record-setting and are predicted to be at low levels again for the 2017 harvest.

Corn prices in Minnesota for September were at \$2.99 per bushel, according to the

USDA's latest crop report. The price was 3 cents higher than last year.

In the U.S. average price for a bushel of corn was \$3.27.

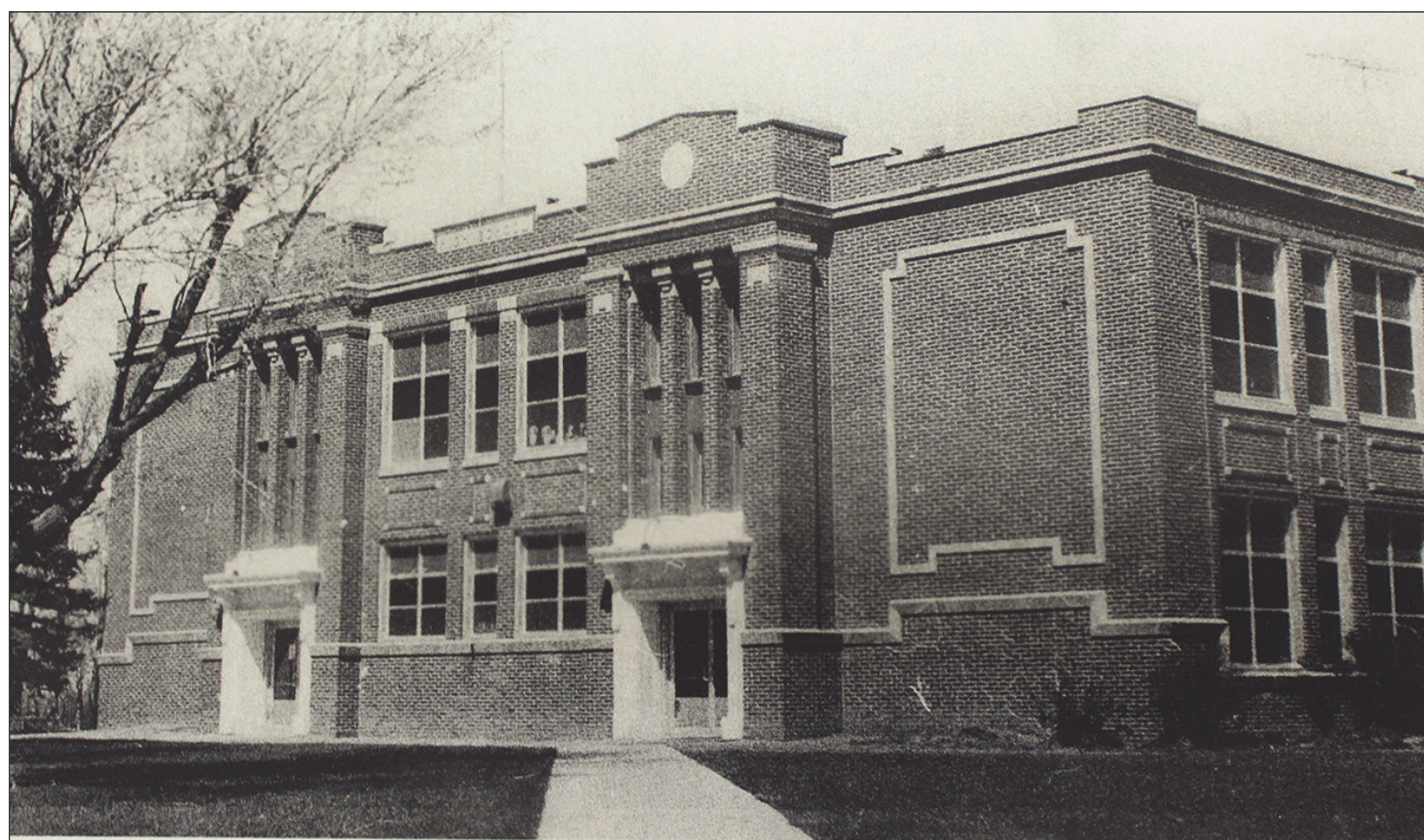
Soybeans averaged \$9.08 per bushel in the state in September, down 9 cents from the previous year.

The U.S. average soybean price was \$9.35 per bushel.

283-9171 | PAPIK.COM

<div style="text-align: center;"> <h4>2013 Chevrolet Silverado</h4> <p>Stock #286684N 97K</p> <p><i>Papik Price</i> \$19,990</p> </div>	<div style="text-align: center;"> <h4>2015 Chevrolet Silverado</h4> <p>Stock #317228N 39K</p> <p><i>Papik Price</i> \$36,990</p> </div>
<div style="text-align: center;"> <h4>2016 Chevrolet Sonic</h4> <p>Stock #124492N 10K</p> <p><i>Papik Price</i> \$12,990</p> </div>	<div style="text-align: center;"> <h4>2010 Chrysler Town & Country</h4> <p>Stock #373772N 113K</p> <p><i>Papik Price</i> \$8,990</p> </div>

Calling all Bulldogs



Magnolia school's original structure was built in 1922.

Former resident, student organizing Magnolia all-school reunion

By Mavis Fodness

Class reunions have been a part of Lisa Fischenich's life even before she graduated from Luverne High School in 1983.

Her parents, Dallas and Carol Dohlmann, often gathered with Dallas' 1960 classmates from Magnolia High School.

"I remember growing up going to these," Fischenich said.

Now she also wants to reconnect with classmates from Magnolia Public Schools.

Magnolia's last high school graduating class was in 1981. The elementary school closed in 1994.

"I hung out with all the kids three to four years ahead of me (at

Magnolia school)," she said. "It (an all-school reunion) is a lot more interesting than just 15 kids from the same class."

Fischenich estimates the reunion guest list at 883 students — a number gathered by paging through the 1981 yearbook.

To gauge interest and to garner a little help with organizing an all-school reunion (Fischenich lives in Vicksburg, Mississippi), she



Lisa Fischenich

created a Facebook page called Magnolia Bulldogs (MN).

"I don't want to be the only one, but I want there to be one (a reunion)," she said.

So far more than 215 people are following the Magnolia Bulldogs (MN) page and many have offered to assist Fischenich with reunion plans in 2018, possibly near Labor Day Weekend.

Her dad has organized the 1960 reunion around the same time. This past reunion

included members from eight other MHS classes.

Ideas are also being sought in what and where to conduct the reunion. The last reunion was organized in 2006, dubbed the All School 50th Reunion 1922-1981.

All ideas can be directed to an email set up for the event bulldogsofmagnolia@yahoo.com.

The former school building in Magnolia has continued as an education facility.

In 1995 Pinnacle Programs Inc. opened as a residential youth treatment facility. In 2003 the center changed management and became Southwest Youth Services, which serves males ages 10 to 19.

1940: Part two of early morning blaze at St. Catherine Church

The following appeared in the Rock County Star on Jan. 4, 1940, and is the second of two parts.

Early Morning Blaze Causes \$40,000.00 Damage to St. Catherine Catholic Church

Building is Insured for About \$30,000.00; Many Costly Furnishings and Other Contents are Total Loss to Parish; Fine Vestments Lost

About \$30,000 Insurance

No definite information was available but Father Matthews stated that between \$25,000 and \$30,000 insurance was carried on the building. The fire, accordingly, will mean a loss of from \$15,000 to \$20,000 to the parish.

An inspection of the walls by architectural engineers will probably be necessary to determine whether or not the walls, as they are now left standing, can be utilized in rebuilding, or whether they will have to be razed and rebuilt. Heat has a particularly destructive effect on the mortar in brick work, and many are of the opinion that razing will be necessary.

Was Built in 1908

St. Catherine's Church was built during the summer of 1908. The plan for the new church was started in April of that year and on September 8th, 1908, the corner stone was laid at an impressive ceremony attended by many visiting clergymen. Rev. Fr. D. Mangan was then pastor of the congregation. The church was completed late in the fall, at a cost of \$20,000.00. Dedicatory services were held on August 18th, 1909, at which time sixteen visiting clergymen were present to assist in the services. Rev. Father William Griffin, of Ellsworth, gave the dedicatory sermon. Those who were on the building committee at the time were J. P. Coffey, Geo.



Bits by Betty

By Betty Mann,
president Rock County
Historical Society

Fitzgerald, John Lynch and Joseph Willers.

The structure was 41x90 feet in size. Its foundation walls are of Jasper quartzite from the local quarries and its walls are of buff color pressed brick. Greylimestone cornice and trim was used.

A side note

Betty Mann's parents, Charles and Neva Soutar, lived on West Lincoln only three blocks from the blaze. "It was a terrible fire," Mann recalls. "My dad was a volunteer fire fighter and I remember him coming home in a sheet of ice. My mom and I had to break the ice off of his jacket and helmet because he was frozen stiff"

The outdoor temperature was minus 15 degrees and it took all night to contain the blaze.

"It was a very, very cold night, and they had to be there for many, many hours," Mann said.

Donations to the Rock County Historical Society can be sent to the Rock County Historical Society, 312 E. Main Street, Luverne, MN 56156.

Mann welcomes correspondence sent to manmade@iw.net.

REMEMBER WHEN

10 years ago (2007)

• Tarzan's canine nose proved to be an effective tool during a manhunt last week in Lincoln County.

According to Rock County Deputy Ken Baker, a daylong search for an escaped suspect came to an end near Verdi on Oct. 31 when Baker's canine partner found the man hiding in a field. Baker was proud of the outcome. "I tell you what, it's an amazing tool for us," he said about Tarzan's nose.

As members of the regional High Risk Entry and Arrest Team, Baker and Deputy Jeff Wieneke were called Wednesday afternoon to help with the search.

25 years ago (1992)

• Election-day weather Tuesday challenged Minnesota to hold on to their reputation as the state with the highest voter turnout.

In Rock County, with temperatures in the 30s, more snow sifted down throughout the day adding cover to grassy areas and keeping the roads wet and slippery. Winter coats and gloves came out of the closet for trips to the polls.

But cold weather didn't stop hardy Rock Countians. Luverne Northwest precinct election judges Bev Christensen and Sandy Blake said voters were ready and waiting at the polls before 7 a.m.

Before the snow fell Sunday, Minnesota Secretary of State Joan Grove predicted 72 percent of all Minnesotans would vote.

In Rock County 82.5 percent of the registered voters cast ballots. Red stickers given to voters saying "I voted" soon brightened clothing all around the county.

50 years ago (1967)

• Thieves entered the Magnolia and Beaver Creek school buildings sometime Thursday night or Friday morning, accord-

ing to the Rock County Sheriff's office.

They entered the Magnolia school by breaking the glass in the north door. On the inside they broke open the office door and opened a filing cabinet but nothing appeared to be taken.

At the Beaver Creek School, the east door was broken by thieves to get into the school building where they took \$21.45 in cash from the Superintendent's office. Sheriff's officers are continuing the investigation.

75 years ago (1942)

• If your rural mail carrier doesn't reach your mailbox at his usual time, or if your city carrier is later than usual, don't accuse him of going hunting or falling down on his job.

Reasons for their late arrival, which has been frequent of late, is due to the uncertainty of the passenger train and mail train schedules, L.L. Frisbey, local Omaha agent said yesterday. During the past few weeks, trains have been as much as four hours late because the trains on the main lines, especially at Omaha, had to wait for troop cars and troop trains, Frisbey said. The delay on the main lines causes a similar delay on the branch lines, he pointed out, especially in this area where troops are often bound for Sioux Falls, over the Worthington-Mitchell branch of the Omaha road.

100 years ago (1917)

• The adjourned September term of district court for Rock County will open in Luverne on Monday, November 19th.

There are thirteen jury cases and six court cases on calendar up to date, and there is one case for the consideration of the grand jury. The last mentioned case may be disposed of before the grand jurors are summoned.

If this case is not disposed of before hand, the grand jurors will be required to report at 11 a.m. on the 19th. The petit jurors are to appear at 10 a.m. on Wednesday the 20th.

PEOPLE IN THE NEWS

Midwest Fire Equipment & Repair hires new sales representative

Midwest Fire Equipment & Repair Company (Midwest Fire) announced Oct. 16 that the company has hired Joseph Hlushak as a new sales representative.

Hlushak will work one-on-one with customers during the sales process and build relationships with prospective buyers. Hlushak graduated with his Masters of Business Administration from the University of Sioux Falls (USF). He brings with him more than two years of

sales experience and manufacturing knowledge from Wheeler Tank. While at USE, Hlushak also worked on forging relationships with donors and developing alumni contributions.

"Hlushak is a great addition to our team," said President and Chief Executive Officer of Midwest Fire Sarah Atchison, "with customer service, sales and manufacturing experience, he brings a lot of the skills that are needed to serve our customers. We look forward to the fresh ideas he brings along with his

winning customer service attitude. We are confident Hlushak will help us continue to serve our customers with excellence and professionalism."

About Midwest Fire

Midwest Fire Equipment & Repair Company has been manufacturing high-quality fire tankers and pumpers since 1987. They work directly with their customers, never through dealers, to keep costs down and communication consistent during the entire sales and manufacturing process. By creating

SCHOOL NEWS

The Star Herald strives to recognize all academic accomplishments of students from its coverage areas.

Send school news to editor@star-herald.com or call 507-283-2333.

MENU

Monday, Nov. 13: Barbecued pulled pork, scalloped potatoes, country blend vegetables, bun, applesauce.

Program: Veterans Day Celebration; pinochle.

Tuesday, Nov. 14: Creamed chicken on biscuit, California blend vegetables, fruit cup, vanilla pudding.

Program: Two-buck Tuesday sponsored by Myhre Studio.

Wednesday, Nov. 15: Hot beef commercial, mashed potatoes with gravy, corn, bread, cookie.

Program: Site Council.

Thursday, Nov. 16: Roast turkey, mashed potatoes with gravy, green bean casserole, cranberry sauce garnish, bread, pumpkin dessert.

Program: Celebrating Thanksgiving.

Friday, Nov. 17: Salisbury steak, mashed potatoes, squash, bread, blushing pears.

Program: Birthday Party; Kitchen Band.

Senior Dining offers well-balanced and affordable meals in a community atmosphere.

Gift certificates are available at the meal site or online at www.lssmn.org/nutrition.

Call Lauree Teunissen at 283-9846 to make dining reservations or for home-delivered meals.



long-term relationships with customers, they are able to help devise state-of-the-art approaches to meet each department's needs.



Rebecca Austin demonstrates how she has taught her dog, Tessa, to "stay" while on a leash as part of the obedience classes this past summer through the Southwest Minnesota 4-H Dog Project.



Submitted photos

The rat terrier, Tessa, gets some well-earned pats from Cloverbuds at the "All About Dogs" program Oct. 21 at the Rock County 4-H Extension meeting room.

New 4-H year kicks off learning with dogs

By Mavis Fodness

Rock County 4-H kicked off its new programming year with "All About Dogs" Oct. 21, when state 4-H dog show participant Rebecca Austin showed her rat terrier to the four Cloverbud participants. Austin and "Tessa" earned a champion ribbon in the agility jumpers category.

The County K-9 4-H

Club member told participants any aged dog could learn obedience.

"It's never too late. At 4-H practices you learn the best way to handle and communicate with your dog," she said.

Rock County 4-H members participate in the Southwest Minnesota 4-H Dog Project in Worthington. The group conducts weekly practices during the summer months.

"Our Cloverbud theme

for this 4-H year is animals," said program coordinator Chelsey Asche.

"Often when people think of 4-H and animals, they only think of farm animals. However, the dog project is just one example of projects that you don't necessarily need to have access to livestock to be a part of."

The "All About" programs are free and open to all youth who enroll in 4-H.

"All About Dairy" is the next Cloverbud meeting on Saturday.

"All About Rabbits" will be in January.

"This is another small animal project that 4-H'ers without the ability to keep large livestock can participate in and show at the county fair."

For more information contact Asche at 507-283-1302 or joh13978@umn.edu.



The "All About Dogs" program participants like Cloverbud Olivia Lorang (right) painted faces of dogs on pumpkins as part of the event's activities.



OBITUARIES

Gerald Bosch

Gerald "Jerry" Bosch, 92, Valley Springs, South Dakota, died Monday, Nov. 6, 2017, at Dougherty Hospice House in Sioux Falls, South Dakota.

A memorial service will be at 2 p.m. Friday, Nov. 10, at Valley Springs Reformed Church in Valley Springs. Private family interment will take place prior to the memorial service on Friday. Visitation with family present will be from 5-7 p.m. Thursday, Nov. 9, at George Boom Funeral Chapel in Brandon, South Dakota.

Gerald Bosch was born Nov. 28, 1924, to Gerrit and Jennie (TenHaken) Bosch in Rock County.

On May 21, 1946, he married Vivian Eernisse at her parents' home in Valley Springs. Jerry worked at Olson Lumber for 28 years and then at Robinson Lumber for another 17 years before his retirement in 1991. He was a longtime member of the Retail Lumbermen's Association and was recognized for over 45 years as a member. In retirement he enjoyed helping on the farm or with home improvement projects for family members. Most mornings he could be found with the coffee crew at the elevator in Valley Springs.

Gerald and Vivian have been longtime members of the Valley Springs Reformed Church. Gerald served as deacon, elder, secretary, and Sunday School secretary. He was on the Valley Springs

School Board at the time of the merger with Brandon. He volunteered at the Banquet in Sioux Falls, with Habitat for Humanity, and participated with Vivian in many mission trips. He served on the Pleasant View Cemetery Board for many years. Gerald and Vivian enjoyed playing pinocle with friends.

He also enjoyed attending his grandchildren's ball games and other activities.

Gerald is survived by his wife, Vivian, Valley Springs; three children, Marilyn Bosch, Sioux Falls, Loren (Tracy) Bosch, Burke, South Dakota, and Brad (Tammy) Bosch, Sioux Falls; a daughter-in-law, Cheryl Bosch, Brandon; five grandchildren, Tammy Lynn Bosch, Mike Bosch, Katie Bosch, Ryan Bosch, and Trent (Sharey) Bosch; two great-grandchildren, Elliana and Kolten; a sister, Grace Wassenaar, Hills; sisters-in-law Mona Rozeboom of Minnesota and Joyce (Craig) White of Missouri; brothers-in-law Jim Harsma, Sioux Falls, and Lester (Mae) Eernisse of California; and other relatives and friends.

He was preceded in death by his parents; a son, Gary; four brothers, Marvin, Dries (Jennie), Bill (Bertha), and Arthur (Dorothy) Bosch; a sister-in-law, Evelyn Harsma; two brothers-in-law, William Wassenaar and Jerrie Jones; and Vivian's parents, Bill and Mary Eernisse.

Arrangements are by George Boom Funeral Home, www.georgeboom.com.

(1109 F)

Gerald Leech

Gerald J. Leech, 88, Luverne, died Monday, Oct. 30, 2017, at the Minnesota Veterans Home in Luverne.

A funeral service was Saturday, Nov. 4, at the Dingmann Funeral Home in Luverne. Burial with full military honors provided by the Luverne American Legion and VFW was in the Maplewood Cemetery in Luverne.

Gerald Leech was born April 9, 1929, to Harry and Aimee (Pengra) Leech in Luverne. Jerry graduated from Luverne High School in 1948. He served his country, stationed in Japan, in the United States Air Force during the Korean Conflict.

Jerry married Marjorie Hoh on Nov. 3, 1958, at the United Methodist Church in Luverne. The couple lived in Luverne. Jerry worked as an insurance agent for Minnesota Protective Life.

In 1992 he retired from the insurance business and then worked for Schwan's for ten years.

He was a member of the United Methodist Church in Luverne and served on various committees. He was also a member of the Luverne American Legion and VFW. In his earlier years he enjoyed hunting and fishing.

Jerry is survived by his son, Todd G. Leech, Jordan; special friend Margaret Hoh, Ellsworth; and several nieces and nephews.

He was preceded in death by his parents; his wife, Marjorie, on April 5, 2007; an infant son, Brad; an infant daughter; and two brothers, Rex and Glenn Leech.

Arrangements were by Dingmann Funeral Home of Luverne, dingmannandsons.com.

(1109 F)

DEATH NOTICE

Erling Tofteland

Erling Tofteland, 94, Luverne, died Tuesday, Nov. 7, 2017, at the Sanford Luverne Hospital.

A funeral service will be at 10:30 a.m. Saturday, Nov. 11, at Grace Lutheran Church in Luverne. Burial will follow at Maplewood Cemetery in Luverne. Visitation will be from 4-7 p.m. Friday, Nov. 10, at Hartquist Funeral Home in Luverne.

Arrangements are provided by Hartquist Funeral Home of Luverne, hartquistfuneral.com.

(1109 DN)

Robert Hellerud

Robert "Bob" Hellerud, 83, Hills, died Friday, Nov. 3, 2017, at Tuff Memorial Home in Hills.

A funeral service was Tuesday, Nov. 7, 2017, at St. Catherine Catholic Church in Luverne. Burial with full military honors was in the Flowerfield Cemetery at Hills.

Robert Hellerud was born Dec. 22, 1933, to Henry and Eva (Goodwin) Hellerud in Hills. He was known by his nickname, Popeye, a name given to him by the hobos who rode the railcars through Hills. Bob grew up in Hills and attended Hills High School. He served his country from 1953-1955 as an Army truck driver during the Korean War. He was also a lifeguard for the Army. He received the National Defense Medal, Korean Service Medal, United Nations Service Medal and the Korean Medal of Freedom.

Bob married Jeannie White on Feb. 1, 1964, at St. Joseph's Cathedral in Sioux Falls, South Dakota. They made their home in Hills. Bob worked at Blue Ribbon Hatchery and was a truck driver for The Paper Company in Sioux Falls. After retiring, he worked as a custodian at Hills-Beaver

Creek High School, a position he thoroughly enjoyed. He belonged to the Hills Fire Department, Hills Community Club, Hills City Council, Pheasants Forever, Beaver Creek Sportsman's Club, and Hills Legion.

He loved the outdoors and was an avid hunter and fisherman. He was very patriotic and flew the flag in his yard. He enjoyed collecting, especially beer cans and barbed wire. He was a fan of sports, especially the Hills-Beaver Creek Patriots, Gophers, Twins and Vikings. He and his wife were foster parents through the state of Minnesota and also hosted foreign exchange students.

Bob is survived by his wife, Jeannie Hellerud, Hills; three daughters, Kelli Hellerud, Hills, Konni (Greg) Liggons, Sioux Falls, and Amy (Tom) Bosch, Sioux Falls; four granddaughters, Karah (Tyler) Hellerud, Emma (Tyler) Bosch, Isabel Bosch and Karissa Liggons; one grandson, Noah Hellerud; and three great-grandchildren, Makynzie, Keiton and Emileigh.

He was preceded in death by his parents; sisters Betty Copler and Eleanor Sargent; and a brother, Gale Hellerud.

Arrangements were with Jurens Funeral Home of Hills, jurensfuneralhome.com.

(1109 F)

Interested in Advertising?

Call 283-2333

25th Anniversary

November 8-11

free gift with \$25 purchase

cash & carry

25% OFF

purchase of \$25 or more

Wendy's Flowers

*** 814 Main St., Edgerton, MN *** 507-442-4188 ***

From Ag Loans to Lines of Credit, We Have You Covered.



The business of agriculture is changing, but Minnwest Bank remains a steadfast resource to farmers and ranchers who want to get things done. Discover how an ag loan can help keep you and your operation going strong, now and into the future.

Doers Welcome.™

MINNWEST BANK

minnwestbank.com

MEMBER FDIC

READ US ONLINE! star-herald.com

Shrimp hatchery to join tru Shrimp harbor and water treatment in Luverne/continued from page 1A

treatment plant, and next fall for the harbor, with operations starting in 2019.

Site prep work for all three will begin next spring.

The property is currently a corn stubble field, but the city is committed to \$11 million in roads and infrastructure work.

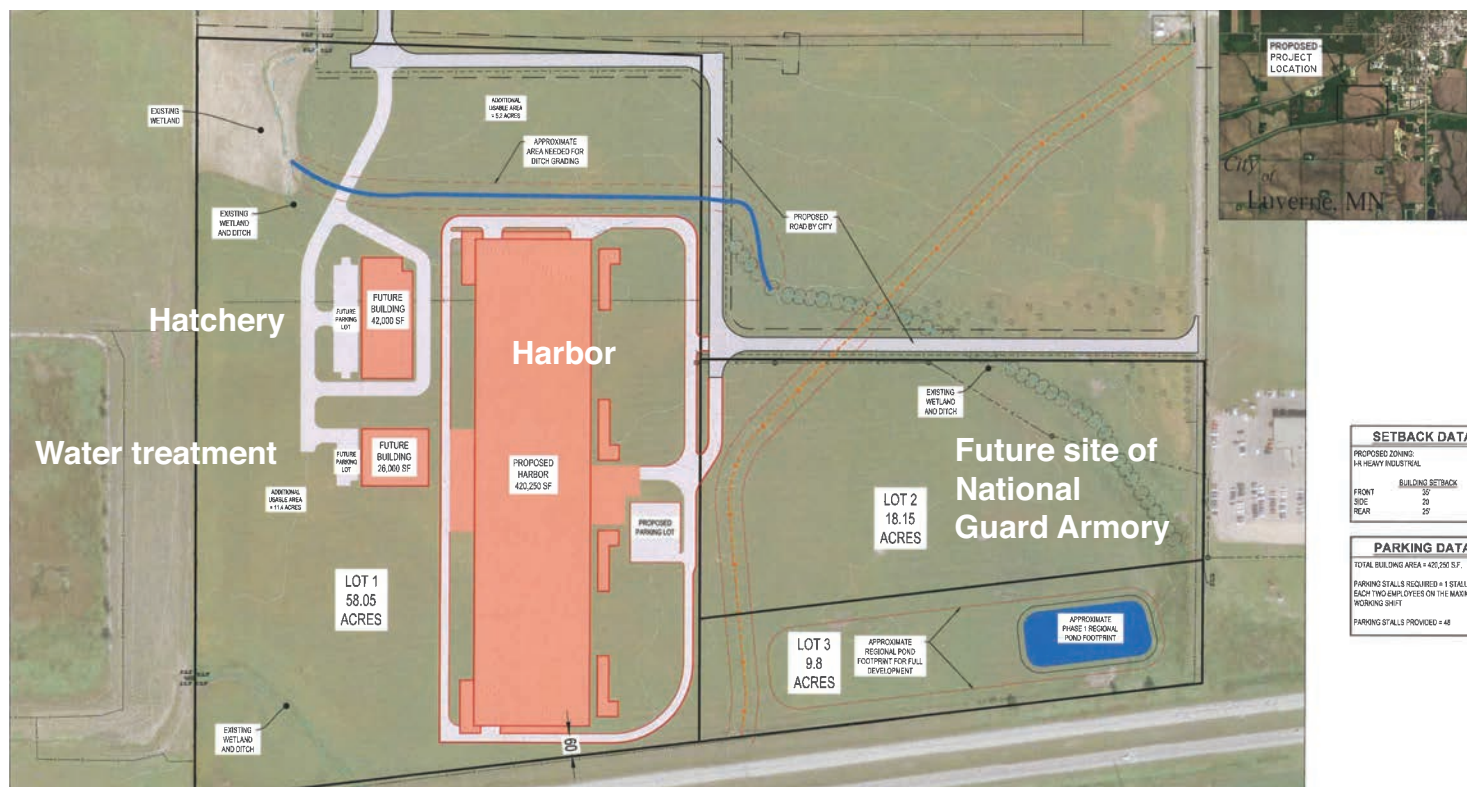
This includes transportation and utilities access in that area of the Industrial Park — not just for tru Shrimp but for all planned development.

Baustian said the city is well equipped to meet water and power demands of the new industry, especially since Luverne's 2016 connection to Lewis and Clark Regional Water System.

The harbor will need 14 million gallons of water to fill production basins and will require 60,000 to 100,000 gallons per day to operate.

By comparison, IBP used more than 1 million gallons per day.

Baustian said Luverne was already able to meet demand for more than 1 million gallons per day, but Lewis and Clark now provides access to another 820,000 gallons per day.



A hatchery for tru Shrimp will now join the already planned harbor and water treatment facility going up next year on nearly 60 acres along I-90 west of Luverne. Lot 2 in the map graphic is the future home of the Luverne National Guard Armory. Lot 3 will be a regional detention ponding area for storm water; it will store water from the entire Industrial Park and slowly release it.

The tru Shrimp campus will employ up to 100 people when production is in full swing. The hatchery will need

up to 20 workers, the harbor will employ up to 60 and eight employees will operate the water treatment plant.

The Luverne Cove Hatchery will provide for spawning and house larviculture tanks where small post-larvae shrimp grow until they are mature enough to be transferred to a harbor.

The hatchery will be able to raise 2 million post-lar-

vae (baby shrimp) annually, which is enough to supply two fully operational harbors and provides future redundancy.

The facility's footprint will be the size of four football fields long and one football field wide, with nine acres under one roof.

The harbor, the first of several planned around the state of Minnesota, would produce 20,000 pounds of shrimp per day of various sizes (42 percent jumbo size). That's more than 50 percent of the nation's current aquaculture shrimp production.

Tru Shrimp is owned by Minnesota-based Ralco, which has been researching and developing the patented shrimp production technology at its Balaton laboratory.

Tru Shrimp is presently constructing Balaton Bay Reef Training and Engineering Center, a multi-million-dollar expansion in Balaton.

Market research has shown that only 20 percent of domestic shrimp consumption is produced in the United States, and imported shrimp are grown in reportedly unsafe and unclean waters.

"What we are building today is impacting people's lives now and will continue to impact thousands well into the future," Ziebell said.

"Our choices demonstrate the care we provide for the shrimp we raise, the people we employ and the communities we call home. Holding each in the highest regard is essential to creating the conditions for the safest, cleanest and best-tasting shrimp."

Rock County Veterans Day Banquet

Saturday—November 11, 2017

At GRAND PRAIRIE EVENTS

105 South Estey Street—Luverne
5 pm Social Hour—6 pm Dinner & Program

Banquet tickets—\$30/person
Reservations by November 9th
Meal by Bluestem Catering

CALL 507.283.4061
Or available at
Herreid Military Museum
213 East Luverne Street



Internationally known guest speaker...

DENNIS PRAGER

- Syndicated radio talk show host for 25 years
- Network television commentator & contributor
- Frequent national newspaper columnist
- Founder of PRAGER UNIVERSITY

Appearance Sponsored By
Warren G. Herreid II
& Jeannine M. Rivet

Iowa crash causes regional outage

By Mavis Fodness

Two cities and rural residents in southwest Minnesota and northwest Iowa were without electricity after a helicopter hit a supply line near Inwood, Iowa, Monday

afternoon.

The cities of Luverne and Rock Rapids plus five rural substations served by Sioux Valley Energy and Lyon REC were affected.

Curt Dieren with L&O

Power Cooperative confirmed the outage began shortly after 1 p.m.

"It was about six minutes," he said.

A helicopter reportedly in search of stray cattle snagged the cooperative's main electrical supply line.

Electrical power was then switched to an alternative supply line, restoring power to the affected areas.

Repairs on the line are likely to be completed later this week. Dieren said once the repairs are made, power supplied to the cities and the rural substations would revert back to the line damaged in the crash.

Details on the crash were unavailable from the Lyon County, Iowa, Sheriff's Office.

24/7... Rain or Shine...

Your local, independent agent will be there.

Working for you—meeting your needs.

Buffalo Ridge INSURANCE

South Hwy. 75, Luverne, MN • Ph. 507-283-2381

Auto-Owners INSURANCE
LIFE • HOME • CAR • BUSINESS

Marja Bloomquist, CPCU; Cory Bloomquist, CIC; Steve Smedstad, CIC

JOB FAIR



CCL LABEL IS HOSTING A JOB FAIR AT THE GRANDSTAY IN LUVERNE, MN NOVEMBER 15th FROM 1pm - 5pm

EXCELLENT BENEFITS
MULTIPLE SHIFTS AVAILABLE

Customer Service
Finishing
Master Planner

Parts Technician
Press Assistants
Press Operators
Project Managers

Receptionist
Shipping
Supply Chain Assistant

WE LABEL IT ALL!

CCL Label • sfhr@cclind.com
1209 W Bailey St, Sioux Falls, SD 57104

PICK YOUR PACKAGE

	CHOICE 60 ENTERTAINMENT	XSTREAM 100 SILVER
230+ TV and music channels	✓ with FREE HD	✓ with FREE HD
17,000+ FREE On Demand titles	✓	✓
Internet download speeds	UP TO 60 Mbps*	UP TO 100 Mbps* Matching Wi-Fi up to 100 Mbps!
TIVO® DVR service	✓	✓ 1,000+ TIVO® DVR recording hours
TV on the go with TV Everywhere®	✓	✓
Digital Phone	✓	✓
30 minutes of International calling ¹	✓	✓
	NOW SAVE 50% OFF TV, Internet & Phone \$26.67* each service / mo. for one year when bundled	NOW SAVE 44% OFF TV, Internet & Phone \$33.33* each service / mo. for one year when bundled

Plus activation, installation, modem rental, sports and broadcast surcharges, taxes and fees

SWITCHING FROM A SATELLITE TV OR ANOTHER INTERNET PROVIDER? You may qualify for an additional savings of \$25 per month! Call for more details.



855-803-7466

*Choice 60 Entertainment Pricing: Monthly bundled price is \$79.98 for one year and thereafter increases by \$20 each year until the fourth year, when each service will begin to be billed at its standard rate (currently \$159.98 for all three services). Xstream 100 Silver Pricing: Monthly bundled price is \$99.98 for one year and thereafter increases by \$20 each year until the fourth year, when each service will begin to be billed at its standard rate (currently \$179.98 for all three services). All Packages: If you cancel any of the three services in the package during the first year, standard rates will be charged for any continuing services. Package prices do not include standard installation fee (\$99.99; more if special work is needed); a one-time \$10 activation fee; or other one-time fees that may apply because of options you select. Prices also do not include the following recurring monthly charges: (i) modem fee, currently \$10; (ii) a surcharge for regional sports networks, currently up to \$4.57, depending on your location; (iii) a surcharge for local broadcast stations, currently up to \$11.94, depending on your location; (iv) taxes, franchise fees and other amounts required by law to be collected or paid; or (v) fees for optional services or equipment you may want. All of these monthly charges may increase from time to time. After the first year, if our standard rate for any service in your package that is not free increases or we institute a new fee for service subscribers generally, we can pass that increase or new fee along to you. ¹Internet Service Usage Allowance & Speeds: Internet 60 is subject to a usage allowance of 400 gigabytes per monthly billing period. Internet 100 is subject to a usage allowance of 1,000 gigabytes per monthly billing period. Excess usage will be billed at \$10 for every increment of up to 50 additional gigabytes used. For example, if usage exceeded the allowance by 51 gigabytes, the additional charge would be \$20. Usage allowances and excess usage charges are subject to change at any time. Download and upload speeds are not guaranteed and may vary. Offer Availability: Offers expire on date stated above and may be terminated any time without notice. Offers may not be available in all areas, cannot be combined with any other offer, are not transferable and are void where prohibited. Available only to residential customers who have not subscribed to any other Mediacom service within the prior 90 days and meet applicable credit and other requirements. Customer must agree to all applicable subscriber terms and policies. Other terms and conditions may apply. ²WorldTalk 30: 30 minutes a month of international calling only available to customers who don't subscribe to WorldTalk service. M73-32607 Competitive Print Update

Searching for furniture from the 1905 state Capitol

Cass Gilbert Society representative to speak in Luverne Nov. 20

By Mavis Fodness

A presenter with the Cass Gilbert Society wants Rock County residents to check their homes for furniture pieces belonging to the state of Minnesota.

Not for return but for cataloging, according to society project manager Natalie Heneghan.

She will be in Luverne Monday, Nov. 20, at the Rock County Community Library. Her presentation, "Furnishings of the Historic 1905 Minnesota State Capitol," begins at 1 p.m.

Heneghan said interest in Cass Gilbert was renewed during the recently completed three-year, \$309 million state Capitol restoration project in St. Paul.

The building's exterior and interior walls were restored with interest piqued in Gilbert's choice of the Capitol's 1905 furnishings.

"They are like a piece of the building's history," she said.

In March, the society decided to complete the 1905 inventory of the Capitol's furnishings started by the Minnesota Historical Society and left uncompleted in 1989.

The Historical Society's inventory catalogued about half of the 1,600 chairs, light fixtures and decorative metalwork known to be in the 1905 Capitol.

During the 10 years of construction on the St. Paul Capitol, Cass Gilbert decided every minute detail of the building's American Renaissance features, from the stone used in the building's construction to the chairs the legislators sat on.

Furniture design drawings and the receipts from purchased pieces are guiding the society's search for all the missing items. Many of the pieces are stamped "State of Minn." or have numbered brass tags attached.

Heneghan said her No. 1 sought-after piece is the decorative iron gate used to close off the elevator's glass door.

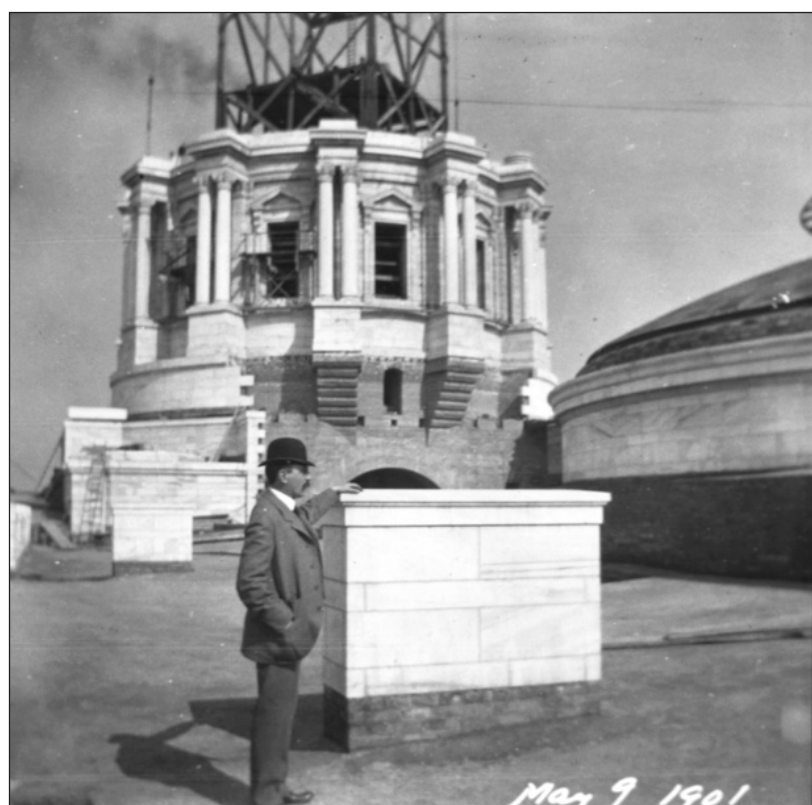
"We can trace its whereabouts through the mid 1990s," she said.

Renovators wanted to recreate the former elevator covering but



Photos courtesy of the Cass Gilbert Society

According to inventory records, 173 of these armchairs were ordered in 1905 for use in the Minnesota Capitol. A 1989 inventory shows only 87 of these chairs can be accounted for in state offices or in use in the private sector.



At left, Minnesota Architect Cass Gilbert stands on the roof of the Minnesota State Capitol building in 1901. The 10-year project was completed in 1905. In August the state reopened the Capitol after a three-year, multi-million-dollar renovation project was completed.

Photo courtesy of Minnesota Historical Society

Pictured below and below left, many of the furniture pieces from the 1905 Minnesota State Capitol are stamped or etched with the words "State of Minn." Many of the pieces were designed by the Capitol's architect Cass Gilbert, and the society that bears his name is looking at inventorying the whereabouts of all the furniture pieces.

Photos courtesy of the Cass Gilbert Society



little documentation on its design is available. Finding the actual door would aid in the current recreation, Heneghan said.

Most furnishings left the Capitol and their whereabouts were lost in 1970 during the first renovation since the Capitol was constructed. Another renovation primarily replacement of windows occurred in 2012.

Heneghan said by 1970 the urban renewal design phase was just gripping the U.S. and the thinking "new was better" sent many of the antique furnishings out the door.

"A lot of stuff has ended up in landfills or will never be found," she said.

Since the cataloging project was renewed in March, a few Capitol pieces have been located including a desk chair at the Nobles County Historical Society.

Director Roger Zarn said the ornately carved wooden-armed chair was given to the local historical society in 1970.

"It's an important artifact," Zarn said. "I am glad to have it."

Zarn emailed Heneghan about the chair which is now counted among the lost 1905 Capitol inventory.

Heneghan said it was common for the seated representatives to purchase their desk chairs when the Capitol underwent updating almost 50 years ago. Cost to purchase the 1905 chairs was about \$20.

It was common for representatives' families to donate the chairs to local historical societies. Other chairs were found at estate sales or in antique stores.

Heneghan estimates she has so far found 20-26 pieces.

"It hasn't been a staggering number," she said.

The search continues through the end of the year.

Who was Cass Gilbert?

A 36-year-old Cass Gilbert was selected to design the state's Capitol in 1895, the first of dozens of public building projects.

He later designed the Woolworth building (in 1913 the tallest building in the U.S.) and the U.S. Supreme Court building in Washington D.C. among other government buildings, institutions, churches and residences.

The Cass Gilbert Society

The Cass Gilbert Society was incorporated in 1998 to preserve and enhance Gilbert's contribution to American architecture.

Gilbert is known for merging modern interiors and technologies of the day with historic exterior architectural styles.

The society is based in St. Paul.

Rock County Farm Service Agency profiles candidates for committee elections

This year's County Committee election in Rock County is being held in the northern and eastern one-third of the county in LAA #1, which includes the townships of Battle Plain, Denver, Rose Dell and Vienna

By Fraser Norton,

Rock County Farm Service Agency

It is once again election time for the FSA County Committee. Elections are held each year to replace a member whose 3-year term will expire.

Producers who are eligible to vote in a particular elective area, also called a Local Administrative Area (LAA), and who participate in FSA programs and are of legal voting age may serve on the County Committee.

This year's County Committee election in Rock County is being held in the northern and eastern one-third of the county in LAA #1, which includes the townships of Battle Plain, Denver, Rose Dell and Vienna. This is the area that is currently be-

ing represented by Committee Chair, Denise Severtson, who has served the maximum of three terms and is therefore ineligible to serve another 3-year term.

Nominations have been received from Sterling Severtson and Mark Vander Pol to serve as the LAA #1 County Committee member for the next 3-year term. Both Sterling and Mark reside in LAA #1 and are willing to serve if elected.

Sterling has a beef cow/calf and feeder cattle operation and also feeds out Holstein steers and raises corn, soybeans and alfalfa.

He has been farming for the past 34 years and is a member of the Rock County Corn and Soybean Growers'

Association, as well as the Rock/Nobles and Minnesota Cattlemen's Associations.

Mark is a wean-to-finish hog contract grower and raises corn and soybeans.

Having started out as a Mechanical Engineer in Michigan, Mark has been farming for the past 10 years and also serves on the Battle Plain Township Board and the Rock County Planning and Zoning Commission.

Ballots will be mailed to eligible voters on November 6 and must be returned to the FSA Office by December 4, 2017.

The opening and counting of the ballots, which is open to the public, will take place at 9:00 a.m. on

Wednesday, December 6 at the FSA Office during a County Committee meeting.

Voters will elect one of the nominees or a write-in candidate to the position. The person with the second highest votes will serve as the County Committee alternate.

The elected committee member and alternate will take office on January 1, 2018.

To be eligible to vote, a person must be eligible to participate in any FSA program that is provided for by law, regardless of the status of funding.

Furthermore, if they are of legal voting age, the person must have an interest in a farm in LAA #1 as an

owner, operator, tenant, or sharecropper; or be a partner in a general partnership, or a member of a joint venture that has an interest in a farm as an owner, operator, tenant, or sharecropper. If the person is not of legal voting age, they need to supervise and conduct the farming operations on an entire farm in LAA #1.

Committee members are a critical component of the day-to-day operations of FSA, applying their judgment and knowledge to help in the delivery of Farm Programs at the county level.

For more information, call 507-283-2369, ext. 2, or stop by the Rock County FSA Office at 500 W. Gabrielson Road in Luverne.

Cards place sixth in Northfield Saturday

*Tenley Nelson secures medal;
Regan Feit makes all-state list*

By John Rittenhouse

The Luverne girls wrapped up a successful season with a strong showing at the Minnesota State Class A Cross Country Championships Saturday at St. Olaf College in Northfield.

Luverne, which was making its 10th appearance as a team at state competition since 2002, solidified its position as one of the state's top programs during the event.

The Cardinals turned in a 203-point effort to place sixth in a field of 16 teams.

LHS turned in program-best fourth-place efforts at the 2015 and 2016 state meets, but Cardinal coach Pete Janiszkeski seemed to be equally proud of Saturday's effort.

The Cardinals matched the 2004 team's sixth-place effort, which goes down in history as the fourth-best team showing at state competition behind the 2005 team (fifth place) and the 2015 and 2016 squads.

"First of all, just getting to the state meet is a great accomplishment," Janiszkeski said.

"To go there and finish in the top half of all 16 teams there is great. We placed better than the pollsters had us ranked and we beat the team (Lac qui Parle Valley-Dawson-Boyd) from our section again, which is something you always want to do. Across the board, all of the runners came close to, or did post their seasonal and personal best times. As a coach, you can't ask for more than that."

Along with a strong showing as a team, Luverne received two outstanding individual

performances at the state classic.

Tenley Nelson emerged as a medalist by placing among the top 10 finishers, and Regan Feit earned all-state status for the second consecutive season by placing among the top 25 individual finishers.

Nelson, an eighth-grader, ran her second-best time of the campaign by finishing fifth with an 18:50 effort.

Nelson ran an 18:42 during the Adrian Invitational in October.

Feit, who placed 23rd at the state meet as an eighth-grader last year, bettered that effort by finishing 15th as a freshman.

Feit ran a personal best time of 19:18 during the race.

"To have one person make the all-state team is a great accomplishment," Janiszkeski said.

"To have two all-state runners, including one state medalist, at a state meet is a pretty special thing."

Eighth-grader Brooklynn Ver Steeg, freshman Autumn Nath and junior Gabrielle Ferrell made key contributions to Luverne's effort by rounding out the team scoring.

Ver Steeg placed 89th in 20:40, Nath 122nd in 21:14 and Ferrell 150th in 21:44.

"Brooklynn posted a time that was near her average, while Gabby and Autumn had their best times of the season," Janiszkeski said.

"I thought our younger girls (seventh-graders Tiana Lais and Elizabeth Wagner) raced well, too. It's a completely different atmosphere at the state



John Rittenhouse photo/1109 lcc 8

Luverne eighth-grader Brooklynn Ver Steeg (middle) takes a turn with a group of runners during the Minnesota State Class A Cross Country Championships at St. Olaf College in Northfield Saturday.

meet, and it's hard to explain that to the younger kids. It's something they have to experience for themselves."

Lais and Wagner placed 154th and 155th with respective 21:14 and 21:44 times.

"One of our goals all year was to keep working hard every day and to have each individual give it their all for their teammates. I think our kids can say they did that, and that's the most important thing we accomplished," Janiszkeski



John Rittenhouse photo/1109 lcc 6

Nelson



John Rittenhouse photo/1109 lcc 7

Feit

concluded.

Perham nipped Winona Cotter 86-87 to capture the Class A team title, and Math and Science Academy (Woodbury) freshman Tierney Wolfgram repeated as the state individual champion by posting a time of 17:31.

Standings: Perham 86, Winona Cotter 87, Annandale 131, Stewartville 137, Fairmont 165, Luverne 203, Maple Lake 211, Minnehaha Academy 219, Jordan 238, LQPV-D-B 257, Belle Plaine 261, Eden Valley-Watkins 265, North Shore 266, Proctor 270, West Central Area 272, United North Central 347.



John Rittenhouse photo/1109 acc 5

Brady Henning

Adrian's Henning exceeds expectations by placing 61st

By John Rittenhouse

An Adrian High School senior wrapped up his running career at the Minnesota State Class A Cross Country Championships Saturday at St. Olaf College in Northfield.

Brady Henning, a first-time qualifier for state competition, exceeded expectations he had set for himself prior to the state classic.

Henning placed 61st in a 166-runner field with a time of 17:19. "We were thinking he could finish in the 80s going into the meet, so we were very happy with a 61st-place finish," said Adrian coach Erick Kiers.

Henning ran well to secure his place in the field.

His time on Saturday was three seconds short of matching the 17:16 he ran during the first race of the season in Mountain Lake in late August.

"We were hoping for a personal record, but finishing three seconds short of that is nothing to be disappointed about," Kiers said. La Crescent senior Matt Steiger won the individual title with a time of 15:44.

Kiers and Henning thought it was unrealistic to believe AHS had a good shot at earning a medal (placing in the top 10) and earning all-state status (finishing in the top 25).

Henning, however, did accomplish something that was important to him during the race.

"He beat all of the (Section 3A) individual qualifiers who beat him the week before in Madison," Kiers said.

"He was kind of disappointed that some of those guys beat him at the section meet after he beat them consistently during the season."

Tigers end Luverne's magical season

By John Rittenhouse

Luverne's first appearance in the South Section 3AA Volleyball Tournament ended in defeat when the Cardinals squared off against the Marshall Tigers Thursday in Pipestone.

Luverne, which last qualified for a postseason championship game in 1997, faced long odds entering the match against the tradition-rich Tigers.

Marshall, after all, is the state's second-ranked Class AA team and earned the No. 1 seed for the South Section event.

The second-seeded Cardinals were hoping to stage an upset after playing a strong regular season match against the Tigers that included a pair of two-point setbacks in a 3-0 loss.

Marshall, however, was up to the challenge.

The Tigers outscored the Cards 75-59 in the rematch and earned a berth in the section championship match after posting another 3-0 win over LHS.

Luverne ends the season with a 20-5 record.

Marshall may have won the battle, but the Cardinals put up a good fight during the title tilt.

LHS sported leads in each of the final two sets and was in a position to win the second set before falling by two points.

The opening set was tied at two when Marshall reeled off four straight points to take a 6-2 lead.

Luverne trimmed the difference to 6-4 with a service point from Alexis Ferrell before the Tigers went on an 8-3 run to open a commanding 14-7 lead.

LHS trimmed the difference to five points twice as the set progressed, but an 8-6 scoring cushion late in the contest gave the Tigers a 25-17 victory.

The second set proved to be the most competitive contest of the night.

Ferrell gave the Cards their first lead of the night (1-0) with a kill, and the Cards led 10-7 when Ferrell registered another kill.



John Rittenhouse photo/1109 finals 4

Luverne junior Greta Ahrendt spikes the ball in front of a Marshall blocker during the South Section 3A Volleyball Tournament Championship game in Pipestone Thursday.

LHS was clinging to a 14-13 edge when Marshall reeled off five consecutive points to move in front 18-14, but the Cards wouldn't let the Tigers pull away.

After trimming the difference to two points at four different occasions, Ferrell recorded a block followed by a kill to knot the score at 24.

Marshall responded by scoring the next two points to secure a 26-24 win.

Luverne sported a pair of one-point edges early in the third set and led 7-5 when Tacey Baustian delivered a service point.

Marshall countered with a 13-6 run to move in front 18-13.

The Cards trimmed the difference to three (18-15) with a service point from Mackenzie Petersen, but the Tigers answered with a 6-2 spurt to open a seven-point lead (24-17) before winning 25-18 at

set's end.

Ferrell turned in a 14-dig, two-block, 18-kill performance in her final high school match.

Sierra Schmuck led the Cards with 21 set assists, while Gracie Bosch charted a team-high 19 digs.

Baustian and Mallory Thorson completed all 11 of their serves, while Greta Ahrendt added eight kills to Luverne's cause.

Final fall events were fun to witness

The final week of the fall sports season here in southwest Minnesota provided me with some of my personal highlights of the 2017 campaign.



FROM THE SIDELINES

By John Rittenhouse, sports editor

I also admire the way the cross country girls handled themselves this year. I had my doubts about how strong the team would be without the services of 2016 LHS graduate Madison Schandelmeier, but I'm happy to say the 2017 season erased my concerns. The Cardinals proved their grit by winning the Big South Conference and Section 3A championships for the third consecutive season when late October rolled around. More impressive was watching the Cardinals perform at the state meet in Northfield on Saturday. If you have never witnessed the state classic in person, it's hard to explain the type of spectacle it really is. All I know is that it probably attracts more fanfare and the biggest crowds our girls run in front of all year, and yet the Cards seem to be comfortable on the state's biggest stage. Team leaders Tenley Nelson and Regan Feit rose to the challenge by turning in all-state performances, and the rest of the Cards ran to the best of their abilities during a high-pressure race. When it was all said and done, I was happy to hear coach Pete Janiszski say his athletes were not disappointed by placing sixth as a team after placing fourth at the same meet the past two seasons. There is no shame in what the Cards accomplished on Saturday and throughout the season, and I believe there are many more shining moments ahead for a team that returns all of its varsity runners in 2018.

The Luverne volleyball and girls' cross country teams may not have claimed any titles, but they represented the Star Herald coverage area with dignity and grace in the final events of the year. I can't say enough good things about the Cardinal volleyball team, which surpassed my modest expectations in every way. It was hard for me to believe a team that returned one starter (Alexis Ferrell) from 2016 could make much of an impact on the area scene, but the Cards turned into the area's feel-good story of the year. LHS won 20 matches overall and a pair of post-season matches for the first time since 1997, two major accomplishments that speak volumes about the job first-year head coach Susan Bork and her staff did this fall. Luverne's home match in front of a big crowd against Jackson County Central on Oct. 31 proved to be my most exciting evening of the year. Watching the Cards put themselves in a position to sweep the Huskies with a 10-3 lead in the third set turned into a nail-biting experience when JCC forced a fifth set, but LHS won the battle to advance to the South Section 3AA title match. I can't say the loss to eventual section champion Marshall in the title match Thursday in Pipestone was unexpected, but I admired the way our Cardinals played hard the entire night against a quality opponent.

Cards win thriller to reach 3AA South finals

By John Rittenhouse

The Luverne Cardinal volleyball team qualified for its first postseason championship game since 1997 Oct. 31 in Luverne.

Luverne squared off against No. 3 Jackson County Central in the semifinal round of the South Section 3AA Tournament in the Cardinal Gym.

The match turned into a competitive one, but the second-seeded Cardinals thwarted a late rally by the Huskies to secure a 3-2 victory.

It was Luverne's 20th win of the season.

The Cards were in a position to make it a short match when they won the first two sets of the showdown, but Jackson battled back to take the third and fourth sets.

Luverne never trailed in the fifth and final set, which sent the Cards to the tournament's championship match in Pipestone Thursday.

Sierra Schmuck served the Cardinals to a 3-0 lead and LHS led by four (7-3) when Alexis Ferrell registered a service point in the fifth set.

JCC battled back to knot the score at nine and 10.

Luverne answered the challenge by scoring the next three points before clinching a 15-11 victory when Mallory Thorson delivered a match-ending service ace.

The Cards led 2-1 when Rachel Oftedahl recorded a block at the net in the opening set, but the Huskies scored the next five points to open a 6-2 lead.

Luverne countered with a 14-6 run ending with a service point from Thorson to gain a 16-12 advantage.

JCC bounced back to knot the score at 17 and 18, but the Huskies were unable to retake the lead.

LHS reeled off three consecutive points during a 7-3 spurt that ended with Ferrell recording a kill to give the Cards a 25-21 win.

A kill from Ferrell gave the Cards an 8-4 advantage in the second set before the Huskies trimmed the difference to one



John Rittenhouse photo/1109 semis 10

Luverne senior Rachel Oftedahl attacks the ball at the net during a South Section 3AA Volleyball Tournament semifinal match against Jackson County Central in Luverne Oct. 31.

point (13-12) as the contest progressed.

The Cards countered with an 8-0 run capped by a kill from Ferrell to open a 21-12 lead that set the stage for a 25-17 conquest when Mackenzie Petersen served the final point of the set.

LHS appeared to be on the verge of a sweep when Tacey Baustian served a point that gave the Cards a 10-3 lead early in the third set.

JCC, however, countered

with a 15-4 run to sport a 16-14 edge as the set progressed.

Luverne tied the score twice before the Huskies went on an 8-2 run to secure a 25-19 victory.

Schmuck served the Cards to a 4-0 lead in the fourth set and LHS led by five (7-2) when Ferrell recorded a kill.

JCC turned things around by putting together a 13-3 run to open a 15-10 lead.

The Cards trimmed the difference to two points (18-

16) with a service point from Petersen, but the Huskies responded with a 7-3 run to prevail 25-19.

Ferrell (21 kills, 26 digs and five blocks) and Schmuck (24 of 24 serving and 23 set assists) led the Cards to victory.

Greta Ahrendt (11 kills), Thorson (20 of 20 serving with two aces), Gracie Bosch (19 digs) and Baustian (10 set assists) also made key contributions to the win.

BOWLING NEWS

Thursday Bowling National League Nov. 2

Games won: The Troublemakers 4; The Stooges 3; Rock Stars 3; The Real Guys 1; Those Girls 1; Those Guys 0. High Scratch Game Men: Zach Runia 222; Jeremy Gehm 220. High Scratch Game Women: Kathy Matson 155; Marie Opheim 140. High Scratch Series Men: Zach Runia 595; Jeremy Gehm 561.

High Scratch Series Women: Kathy Matson 410; Marie Opheim 335. Team High Scratch Game: The Real Guys 525; The Troublemakers 492. Team High Scratch Series: The Real Guys 1461; The Troublemakers 1401. Team High Handicap Game: The Real Guys 622; Those Girls 621. Team High Handicap Series: Rock Stars 1755; The Real Guys 1752.

Patriot spikers fall to T-M-B in semifinals Oct. 31

By John Rittenhouse

The 2017 volleyball season came to an end for the Hills-Beaver Creek Patriots Oct. 31 in Worthington.

H-BC faced the tough task of playing top-seeded Tracy-Milroy-Balaton in the semifinal round of the South Section 3A Tournament.

The fourth-seeded Patriots

did score 20 or more points in two of the three sets, but the Panthers came up on the winning end of a 3-0 decision.

H-BC, which ends the season with a 24-7 record, was outscored 75-57 by the state's second-ranked Class A team.

The Patriots turned in a strong effort during an opening set that ended with T-M-B

securing a 25-20 win.

The Panthers rolled to a 25-16 victory in the second set before completing the match with a 25-21 conquest in the finale.

Avery Wysong (two ace serves, six digs and three kills), Halle Hoekstra (five kills, two blocks and two digs), Olivia Richards (seven kills, three

blocks and five digs), Megan Gehrke (one kill, 15 set assists, three blocks and two digs) and Sidney Fick (10 kills, seven blocks and seven digs) played strong matches for the Patriot girls.

Paige Tilstra and Madison Spath added 10 and eight digs to the cause respectively.

Dining & Entertainment

Hardwick Veterans Day Banquet

Saturday, November 11
Social Hour 6 p.m. • Dinner 6:30 p.m.
Hardwick Legion Hall
Guest Speaker - Richard May, Luverne
First Sergeant Combat Veteran, US Army Ranger
Special music by Bruce Dysthe
Open to the Public

Sponsored by the Hardwick American Legion and Auxiliary

Papa's Place

NEW GENERAL MANAGERS AT PAPA'S PLACE

STOP IN AND MEET THEM!

May's experience comes from several management positions in Sioux Falls - Perkins, Cody's, Lisa May, Happy Chef and Catering.

May is a Rock County Resident. Tanner is Rick and Lori's son. He will be training under May. Tanner is a great cook and will provide you with the best food.

Thanks for your patronage, Lori and Rick Scholten

920 S KNISS, LUVERNE • 283-4458
Mon: Closed; Tues, Wed, Thurs: 10am-8pm; Fri-Sat: 7am-9pm; Sun: 7am-9pm

GREEN EARTH PLAYERS PROUDLY PRESENTS

MIRACLE ON 34TH STREET

BASED ON THE MOTION PICTURE

NOVEMBER 10-12 & 16-19, 2017

THE HISTORIC PALACE THEATRE
LUVERNE, MINNESOTA

CONTACT THE PALACE BOX OFFICE FOR TICKET INFORMATION
507.283.4339

ADAPTED BY MOUNTAIN COMMUNITY THEATRE | BEN LOMOND CALIFORNIA
PRODUCED BY SPECIAL ARRANGEMENT WITH THE DRAMATIC PUBLISHING COMPANY OF WOODSTOCK, ILLINOIS

LUVERNE PUBLIC SCHOOL

Veterans Day Program

Thursday - November 9th
10:30 am - Luverne High School Gym

Live Video Chat with Guest Speaker:
RILEY VERBRUGGE
South Dakota Air National Guard
Currently on deployment in Kuwait

Music by Luverne High School Band & Choir

Supporting all veterans:
ROCK COUNTY VETERANS SERVICE OFFICE
BEYOND THE YELLOW RIBBON—ROCK COUNTY
VETERANS LINKAGE LINE—1-888-LINKVET (546-5838)

Open to the Public

Star Herald CHURCH

Page 4B November 9, 2017

St. Catherine Catholic Church

203 E. Brown St., Luverne
St. Catherine Ph.: 283-8502; email: stcatherine@iw.net
St. Mary Catholic Church, Ellsworth

Thursday, Nov. 9: 2 p.m. Staff meeting. Saturday, Nov. 11: 5:30 p.m. Mass at St. Catherine. Sunday, Nov. 12: 8:30 a.m. Mass at St. Mary. 10:30 a.m. Mass at St. Catherine; Sunday School and CLW. Noon drawing for Fall Fest gift baskets. Tuesday, Nov. 14: 9:30 a.m. and 7 p.m. Faith Formation. 6:30 p.m. St. Catherine FC. Wednesday, Nov. 15: 3:30 p.m. and 7 p.m. Faith Formation. 8 p.m. St. Mary's Knights of Columbus. Thursday, Nov. 16: 9 a.m. Head Start. 4 p.m. Veterans Home Mass. 7 p.m. St. Catherine PC.

Luverne Christian Reformed Church

605 N. Estey St., Luverne
Office Ph. 283-8482; Prayer Line Ph. 449-5982
www.luvnrcrc.com — luvnrcrc@gmail.com
Roger Sparks, Pastor

First Baptist Church

1033 N. Jackson St., P.O. Box 975, Luverne
Ph. 283-4091; email: fbcluv@iw.net — www.fbcluverne.org
Walt Moser, Pastor

Thursday, Nov. 9: 6 a.m. Men's Bible Study at FBC. 7 p.m. Worship service on Channel 3. Sunday, Nov. 12: 9:15 a.m. Sunday School. 10:30 a.m. Worship service. 6 p.m. Evening Worship. Monday, Nov. 13: 1 p.m. and 7 p.m. Women's Bible Study at FBC. 8 p.m. Union Gospel Mission Service. Tuesday, Nov. 14: 7 a.m. Men's Bible Study. 7 p.m. Deacons meeting. Wednesday, Nov. 15: 6:30 p.m. AWANA. Thursday, Nov. 16: 6 a.m. Men's Bible Study at FBC. 6 p.m. Girls' Night Out at Camp Shetek. 7 p.m. Worship service on Channel 3.

Grace Lutheran Church

500 N. Kniss Ave., Luverne
Ph. 507-283-4431; www.graceluverne.org — graceluverne@iw.net
Ron Nichols, Pastor; Stephen Hilding, Associate Pastor

Friday, Nov. 10: 6:30 p.m. Worship on Channel 3. Saturday, Nov. 11: 5:30 p.m. Worship with Communion. Sunday, Nov. 12: 8:15 a.m. Radio broadcast. 9 a.m. Worship; Kindergarten Milestones. 10 a.m. Fellowship coffee; Grades 1-5 Christmas practice; Adult Study. Monday, Nov. 13: 4:30 p.m. Worship on Channel 3. 5-7 p.m. Burger feed at Sterling's. 5:45 p.m. Echoes of Harmony rehearsal. Tuesday, Nov. 14: 9 a.m. Staff meeting. 6:45 p.m. Ministry meetings. 8 p.m. PPC meeting. Wednesday, Nov. 15: 7 a.m. Men's Bible Study. 3:15 p.m. Faithweavers. 5:30 p.m. Youth Supper. 6 p.m. Woven Worship. 7 p.m. Confirmation grades 6-9; Chancel Choir rehearsal. 8 p.m. Exaltation Team rehearsal. Thursday, Nov. 16: 8:30 a.m. Missions in Action. 9 a.m. Naomi Circle at The Oaks. 9:30 a.m. Rachel Circle at church. 1:30 p.m. Lydia Circle at church. 2 p.m. Sarah Circle at Camelot. 7 p.m. Priscilla/Elizabeth Circle at Judy Fenske.

Bethany Lutheran Church

720 N. Kniss Ave., Luverne
Ph. 507-283-4571 or 507-449-0291 or 605-215-9834
pastorapalmquist67@yahoo.com
Andrew Palmquist, Pastor

Sunday, Nov. 12: 9 a.m. Sunday School. 9:15 a.m. Bible Class. 10:15 a.m. Worship with Communion. Monday, Nov. 13: ELS Pastors meeting in Mankato. Wednesday, Nov. 15: 3:30 p.m. Catechism Class.

American Reformed Church

304 N. Fairview Dr., Luverne
Ph. 283-8600; email: office@arcluverne.org
Mike Altena, Pastor

Thursday, Nov. 9: 5:30 p.m. Tumbling Tikes. Friday, Nov. 10: 6:30 a.m. Community Men's Bible Study. 4 p.m. REFIT Fitness Class. Saturday, Nov. 11: Van Dyk/Rignell wedding. Sunday, Nov. 12: 9:30 a.m. Worship Service. OCC Shoebox Collection. 10:50 a.m. Family Education. 7 p.m. Senior RCYF. Monday, Nov. 13: 7 p.m. Congregational Meeting. Tuesday, Nov. 14: 10 a.m. Staff meeting. 6:45 p.m. Bible Study Fellowship. Wednesday, Nov. 15: 4:30 p.m. REFIT Fitness Class. 5:30 p.m. Midweek meal. 6:30 p.m. Pioneer Clubs/YEL. 6:45 p.m. Rachel Circle. 7 p.m. Magnify Praise Team. 8 p.m. Adult Choir. Thursday, Nov. 16: 5:30 p.m. Tumbling Tikes.

First Assembly of God Church

1075 110th Ave., 2 miles west of Luverne on County Rd. 4

Sundays: 9 a.m. Sunday School. 10 a.m. Morning Worship. 6:30 p.m. School of the Holy Spirit. Wednesdays: 7 p.m. Kids Connection; Men's Bible Study with Pastor Ken; Women's Bible Study with Pastor Gloria.

Palisade Lutheran Church

211 121st St., Garretson, S.D.
Ph. (507) 597-6257 — firstpalisade@alliancecom.net
Intern Pastor Laura Phillips

Sunday, Nov. 12: 9 a.m. Worship Service. 10 a.m. Sunday School. Wednesday, Nov. 15: 7 p.m. Confirmation at First Lutheran. Thursday, Nov. 16: 1:30 p.m. WELCA regular meeting. 7:30 p.m. Parish Council Meeting at First Lutheran.

First Presbyterian Church

201 S. 3rd St., P.O. Box 73, Beaver Creek
Ph. 507-935-5025

Email: lori.firspres@gmail.com
Worship Leader Michael Blank

Sundays: 9:30 a.m. Morning Worship. 10:30 a.m. Sunday School.

United Methodist Church

109 N. Freeman Ave., Luverne
Ph. 283-4529; email: luvnrumc@iw.net
Dorie Hall, Pastor

Thursday, Nov. 9: 1-3 p.m. Rock County Food Shelf. 7 p.m. Coloring Ministry. Men's Walk to Emmaus Retreat. Saturday, Nov. 11: 8 p.m. AA meeting. Sunday, Nov. 12: 9:30 a.m. Coffee Hour. 10:30 a.m. Celebration Service with Communion. 4:30 p.m. Genesis/Revelation Bible Study. 6 p.m. A.L.I.V.E. Youth Group. All Saints Celebration. Monday, Nov. 13: 8 p.m. AA meeting. Tuesday, Nov. 15: 2 p.m. Pastoral Gathering at Poplar Creek. 7 p.m. Church Council meeting. Wednesday, Nov. 15: 1-3 p.m. Sewing Day. 6:30 p.m. F.U.E.L.; Confirmation. 8 p.m. AA Meeting. Thursday, Nov. 16: 1-3 p.m. Rock County Food Shelf. Women's Walk to Emmaus Retreat.

First Presbyterian Church

302 Central Lane, Luverne
Ph. 283-4787; email: Firstpc@iw.net — www.fpcluverne.com

Sunday, Nov. 12: 9 a.m. Sunday school. 10:15 a.m. Worship. 11:15 a.m. Mission Sunday dinner. Tuesday, Nov. 14: 10 a.m. and 6 p.m. Worship service on Channel 3. Home Communion. 7 p.m. Esther Circle. Wednesday, Nov. 15: 3:15 p.m. Youth Club. 6 p.m. Bells. 6:10 p.m. Confirmation. 6:30 p.m. Middle School fellowship. 7 p.m. Choir. Thursday, Nov. 16: 10 a.m. Worship service on Channel 3.

St. John Lutheran Church

803 N. Cedar St., Luverne
Ph. 283-2316, Dial-A-Devotion Ph. 283-4005
email: stjoh@iw.net — www.stjohnlutheranluverne.org
Gary Kiatt, Pastor

Thursday, Nov. 9: 9 a.m. Little Lambs devotions. 1:30 p.m. Communion at Mary Jane Brown Home. 2:15 p.m. Communion at Poplar Creek. 3:30 p.m. Communion at Veterans Home. Saturday, Nov. 11: 9:30 a.m. DIY Crafts Class. 1:30 p.m. Set up for banquet. 5:30 p.m. Worship. Sunday, Nov. 12: 9 a.m. 125th Anniversary Celebration Worship service with the Rev. Dr. Larry Stoterau; choir and Sunday School sing. 10:15 a.m. Refreshments and program in Assembly Hall. 11:30 a.m. Anniversary Dinner in Assembly Hall. Monday, Nov. 13: 9 a.m. Circuit Pastors' Conference at Trosky. 1:45 p.m. Communion at Brandon. 7:30 p.m. Men's Club. Tuesday, Nov. 14: 1:15 p.m. Communion at Ellsworth. 2:15 p.m. Communion at Hills. 6 p.m. Mom's Night Out. 7 p.m. Guild. Wednesday, Nov. 15: 9 a.m. and 1 p.m. Little Lambs devotions. 9:30 a.m. Bible Study. 6 p.m. Youth dinner. 6:30 p.m. Catechism. 7 p.m. High School Bible Study; KFC; Senior Choir. Thursday, Nov. 16: 9 a.m. Little Lambs devotions.

Living Rock Church

500 E. Main St., Luverne
Ph. 449-0057; www.livingrockswmn.org
Billy Skaggs, Pastor

Sundays: 10:30 a.m. Worship; Kids Rock Children's Ministry. 6 p.m. Youth Ministry. Life groups meet throughout the week.

New Life Celebration Church

110 N. Oakley, Luverne
Ph. 449-6522; email: newlifecel@iw.net

Sundays: 9:30 a.m. Worship at 110 N. Oakley. Every third Thursday: 5 p.m. Food give-away at Senior Citizens Center. Bible Study groups meet at various times and days.

Zion Evangelical Lutheran Church

305 E. 2nd St., P.O. Box 36, Hardwick
Ph. 669-2855; email: www.zionlutheranhardwick.com

Thursday, Nov. 9: 3:30 p.m. Worship service on Channel 3. Friday, Nov. 10: 3:30 p.m. Worship service on Channel 3. Saturday, Nov. 11: 6 p.m. Hardwick Veterans Day Banquet at Legion Hall. Sunday, Nov. 12: 9 a.m. Sunday School/Adult Bible Study. 10 a.m. Mentor Program. 10:30 a.m. Worship Service with Pastor Schiller; Lass Baptism. 11:30 a.m. Congregational Annual Voters Meeting. Monday, Nov. 13: 1 p.m. Quilting. Tuesday, Nov. 14: 6:30 p.m. Elders Meeting. 7:45 p.m. Church Council Meeting. Wednesday, Nov. 15: 6:30 p.m. Confirmation. Thursday, Nov. 16: 3:30 p.m. Worship service on Channel 3.

Ben Clare United Methodist Church

26762 Ben Clare Ave., Valley Springs, S.D.
igtwb@WOW.net
Bill Bates, Pastor

Sundays: 9 a.m. Worship; 10 a.m. Fellowship; 10:30 a.m. Sunday School for all ages.

First Lutheran Church

300 Maple St., Valley Springs, S.D.
Ph. (605) 757-6662

Intern Pastor Laura Phillips

Sunday, Nov. 12: 9:30 a.m. Sunday School. 10:30 a.m. Worship Service. Wednesday, Nov. 15: 7 p.m. Confirmation. Thursday, Nov. 16: 7:30 p.m. Parish Council Meeting.

Steen Reformed Church

112 W. Church Ave., Steen
Ph. 855-2336

Jeremy Wiersema, Pastor

Sundays: 9:30 a.m. Worship; service broadcast on KQAD. 10:45 a.m. Sunday School. 6 p.m. Youth Group. Evening worship at 6 p.m. first and third Sundays. Wednesdays: 7 p.m. Midweek

Be thankful

"Someone else is in worse shape than you are, so buck up and be thankful."

Have you ever heard these cutting words? While it may be intended to cause you to understand that there are people in worse conditions than you are, at the very minimum it implies your issues are not significant.

How can I be thankful when my spouse died this year? You want me to be thankful when my child is fighting cancer? I just got news that my job is ending and you're telling me that I should be thankful? I don't think so. The possibilities of reasons to complain are almost endless. Yet God does call me to be a thankful person.

The apostle Paul, writing to the early church, tells them, "Let the peace of Christ rule in your hearts, since as members of one body you were called to peace. And be thankful." (Colossians 3:15)

There are many other places that scripture tells us to be thankful. Since we are called to be thankful regardless of our circumstances, what could that possibly look like? Is thankfulness based on my circumstances or is it based on the peace that only Christ can give?

Our peace is based on the security of Jesus, not the security of things on this earth. I can be thank-

BUILT ON A ROCK

By Pastor Walt Moser,
First Baptist Church,
Luverne

ful that Jesus loves me, this I know because the Bible tells me so. I can be thankful because Jesus gave his life on the cross paying the price for my sin and offers salvation free to all who believe in Him.

True satisfaction is based upon who Christ is, not on my earthly condition. The Psalmist asked God why he should care about people when they "are like a breath, their days are like a fleeting shadow." (Psalm 114:4) Our life is brief in comparison to eternity. But Christ is eternal and is willing to give eternal life to all who believe in him as Lord and Savior.

If every earthly possession is taken from me, my heart will hurt. Tears will flood my pillow. I will probably get angry. I may ask the question, "Why, God?" But if, in the heart-rending pain of life I consider who gives eternal life, that is Jesus Christ, then in the middle of my indescribable loss I can be thankful that Jesus loves me.

Magnolia United Methodist Church

501 E. Luverne St., Magnolia
Church Ph. 507-483-2492; cell 227-7821; email: adrmagumc@gmail.com

www.facebook.com/adrianmagnoliaumc

Kristi Franken, Pastor

Sundays: 9 a.m. Magnolia Worship Service with Sunday School following service. 10:30 a.m. Adrian Worship Service. Wednesdays: 6:30 p.m. Confirmation at Magnolia UMC.

Bethlehem Lutheran Church

Pastor Maggie Berndt-Dreyer
112 N. Main St., Hills
Ph. 962-3270

e-mail: bethlehemluth@alliancecom.net

Sunday, Nov. 12: 9 a.m. Worship at Tuff Chapel. 9:30 a.m. Reading the Bible; Sunday School Christmas practice. 10:30 a.m. Communion at Bethlehem. Tuesday, Nov. 14: 2:30 p.m. Bible Study at Tuff Home. 3:15 p.m. Bible Study at the Village. Wednesday, Nov. 15: 9 a.m. Quilting. 2 p.m. Circle meeting at Tuff Village. 7 p.m. Circle of Hope with Marilyn Nelson; Grades 8-9 Confirmation.

Hills United Reformed Church

410 S. Central Ave., Hills
Office Ph. 962-3254

hillsurc@alliancecom.net

Alan Camarigg, Pastor

Sundays: 9:30 a.m. and 6 p.m. Worship Services.

These Weekly Church Page Messages are contributed to God's Work through the Church and by these concerned and responsible citizens & businesses:

Call Rick or Chantel to place your ad!

283-2333

Tuff Memorial Home, Retirement Apartments & Tuff Village
"A Home Where Residents SMILE"
Hills, Minnesota
Phone 507-962-3275

Papik
MOTOR OIL
LUVERNE, MINN.

I-90 in Luverne, MN
507-283-9171 • 1-800-634-7701

Read us online!

Rock County
STAR HERALD
www.Star-Herald.com

Trust In Him



110 E. Main,
Luverne, MN
Phone 507-283-2379



507-283-2381 www.buffaloridgeins.com E-mail: info@buffaloridgeins.com



Manley Minnesota
1-800-615-3704
Open six days a week - Closed on Sundays
To God be the Glory.

McClure Electric
Alan M. Aanenson, owner
Farm, Home & Commercial Wiring
Luverne, MN Phone 507-283-4716

CWG
Business Insurance.
Tri-State Region Period!

First Farmers & Merchants
303 E. Main, Luverne, MN
507-283-4463
www.ftmbank.com
We believe in you.
Member FDIC. And the community.

Rock County
STAR HERALD
Luverne, MN • 507-283-2333

HILLS STAINLESS STEEL & EQUIPMENT CO., INC.
506 W. Koehn, P.O. Box 987, Luverne, MN
PHONE 507-283-4405
Church is Important - Please Attend!

Advertise Here

MINNWEST BANK

• 116 E. Main St., Luverne 507-283-2366
• S. Hwy. 75, Luverne 507-283-9131
• Main St., Beaver Creek 507-473-2333
Member FDIC www.minnwestbank.com

Luverne
ANNOUNCER

HARTQUIST
Funeral and Cremation Services
- ENGBRETSON CHAPEL -
507-283-2777
www.HartquistFuneral.com

"Let our family help your family"
Serving the Luverne and Surrounding Communities

To Advertise
Call
283-2333

Tollefson Publishing
117 W. Main
Luverne, MN 56156
507-283-2333

Star Herald PUBLIC NOTICES

Star Herald CLASSIFIEDS

City of Luverne adopts Ordinance No. 358

ORDINANCE NO. 358, THIRD SERIES

AN ORDINANCE AMENDING THE "ZONING MAP" PROVIDED FOR IN CITY CODE, SECTION 11.26, TO INCLUDE EXPANDING I-1 LIMITED INDUSTRIAL DISTRICT AND REZONING TRACTS IN LOT 6, 7, AND 11, AUDITOR'S PLAT #3 FROM R-1, SINGLE FAMILY RESIDENTIAL DISTRICT TO I-1, (PARCELS 20-0228-000, 20-0227-000, AND 20-0228-300)

THE CITY OF LUVERNE DOES HEREBY ORDAIN:

SECTION 1. The official "City of Luverne Zoning Map" governed and established by City Code, Section 11.26, originally adopted by Ordinance No. 272, Third Series, and succeeding amendments, is hereby amended and this ordinance constitutes the "Fifth Amendment to City of Luverne Zoning Map" to rezone the said property from R-1, Single Family Residential, to I-1 Limited Industrial District described as follows:

DESCRIPTION - That part of Lot Seven (7) in Auditor's Plat No. Three (3) in the Subdivision of Outlot Seventeen (17) in County Auditor's Plat of Luverne Outlots in Section Ten (10), in Township One Hundred Two (102) North, Range Forty-Five (45) West of the 5th P.M., Rock County, Minnesota, described as follows:

Commencing at the Southwest Corner (SW Cor.) of Lot One (1), in said Outlot Seventeen (17) which is also described as the Southeast Corner (SE Cor.) of Lot Seven (7) in said Outlot Seventeen (17), thence westerly along the South line of said Outlot a distance of 330.00 feet, thence northerly a distance of 316.19 feet, thence easterly a distance of 169.45 feet to the Northwest Corner (NW Cor.) of Lot Six (6), in said Outlot, thence Southerly a distance of 109.74 feet to the Southwest Corner (SW Cor.) of said Lot Six (6), thence Southeasterly a distance of 160.55 feet along the South line of said Lot Six (6) to the Southeast Corner (SE Cor.) of said Lot Six (6), thence Southerly a distance of 200.76 feet to the point of beginning, subject to easements, if any.

AND

Lot Six (6) in County Auditor's Plat No. 3 to the City of Luverne, Minnesota, subject to easements of record, if any.

AND

Lot Eleven (11), except the West One Hundred Fifty (W 150) feet thereof, in Auditor's Plat No. 3 in the subdivision of Outlot Seventeen (17) of County Auditor's Plat of Luverne Outlots in Section Ten (10), Township One Hundred Two (102) North, Range Forty-Five (45) West of the 5th P.M.

SEC. 2. The City Administrator is hereby instructed to cause the official "City of Luverne Zoning Map" as adopted in said Ordinance No. 272, Third Series, to be amended consistent with the amendment adopted herein including the notation of this ordinance number and its adoption date thereon and when so amended, said Zoning Map shall henceforth be the "City of Luverne Zoning Map" of all zoning districts delineated in City Code, Chapter 11.

SEC. 3. This ordinance takes full force and effect seven (7) days after its publication

/s/ Patrick T. Baustian, Mayor
/s/ John M. Call, City Administrator
(11-02, 11-09)

Verizon Wireless Public Notice

PUBLIC NOTICE:

Celco Partnership and its controlled affiliates doing business as Verizon Wireless is proposing to construct a 259-Foot AGS Self-Support Telecommunications Tower.

Anticipated lighting application is medium intensity dual red/white strobes. The Site Location is on the north side of County Highway 4 in Magnolia, Rock County, Minnesota 56156 (43-38-48.90 N, 96-4-19.77 W). The Federal Communications Commission (FCC) Antenna Structure Registration (ASR, Form 854) filing number is A1091738.

ENVIRONMENTAL EFFECTS - Interested persons may review the application (www.fcc.gov/asr/applications) by entering the filing number. Environmental concerns may be raised by filing a Request for Environmental Review (www.fcc.gov/asr/environmentalrequest) and online filings are strongly encouraged. The mailing address to file a paper copy is: FCC Requests for Environmental Review, Attn: Ramon Williams, 445 12th Street SW, Washington, DC 20554. **HISTORIC PROPERTIES EFFECTS** - Public comments regarding potential effects on historic properties may be submitted within 30 days from the date of this publication to: Terracon Consultants, ATTN: J. Shepard, 3535 Hoffman Road East, White Bear Lake, MN 55110, (651)770-1500 or jennifer.shepard@terracon.com.

(11-09)

EMPLOYMENT

MN VETERANS HOME

CERTIFIED NURSING ASSISTANTS (Human Services Technicians)

Join an organization dedicated to serving Minnesota's Veterans and their families. Positions are eligible for comprehensive health and dental insurance. Additional benefits include life insurance, pension plan, paid vacation, sick leave and holiday pay. Salary range: \$13.95/hour - \$22.13 per hour plus \$0.65/hour shift differential. Will reimburse training costs for eligible applicants. Apply online: <https://mn.gov/mmb/careers/> Call 507-283-6211 for additional information.



MINNESOTA DEPARTMENT OF VETERANS AFFAIRS

DISPATCHER ROCK COUNTY SHERIFF'S OFFICE

The Rock County Administrator is now accepting applications for the position of Dispatcher in the Rock County Sheriff's Office until November 22, 2017 at 5:00PM. This is a full time position with full benefits and works on a rotating shift basis. Minimum qualifications are a High School diploma or equivalent with one year of work related experience. Applicants must possess excellent communication skills, have the abilities to read a map and multi-task duties in a fast paced environment. Starting hourly wage will be \$14.83 - \$16.04 per hour DOQ.

A detailed job description and an application form for this position can be accessed at <http://www.co.rock.mn.us/employment.html> or by emailing susan.skattum@co.rock.mn.us or by phone 507-283-5065.

An Equal Opportunity Employer

Sanford Luverne Medical Center is currently accepting applications for FT (Full-Time), PT (Part-Time) and PRN (Part-Time as Needed) positions:

- CERTIFIED MEDICATION ASSISTANT - PT, PRN
- HOME HEALTH AIDE - PT, PRN
- LICENSED ALCOHOL AND DRUG COUNSELOR - PT
- LPN, HOSPICE - PRN
- PATIENT CARE TECHNICIAN - FT
- PARAMEDIC - FT
- RECEPTIONIST - PT

To apply, visit sanfordhealth.jobs search "Luverne" in the location search bar.



"Your Calling Your Place."

Sanford Luverne Medical Center | 877-243-1372

EE01AA

3M Science. Applied to Life.

3M Brookings facility is seeking a

FULL-TIME PRODUCTION PACKERS

Candidates must possess a High School Diploma/GED or higher. To view the full job description and apply for consideration, visit: <http://go.3M.com/R00044162>

3M is an equal opportunity employer (disability/veteran status).



Career Opportunities in Marshall, MN

Archer Daniels Midland Company (ADM), one of the world's largest agricultural processors and food ingredient providers, is seeking colleagues to fill various roles at our Marshall, MN Corn Processing Facility.

These are full-time hourly positions:

- Plant Utilities
- Operators
- Maintenance Mechanics

Qualifications

To be considered, candidates must meet the following criteria: Commitment to understand and follow company safety procedures and exhibit regular and prompt attendance; able to meet physical requirements of the position including, but not limited to: prolonged periods of standing and sitting, working in confined spaces and from heights, bending, kneeling, climbing stairs and ladders, working in a variety of conditions (heat, cold, dust, etc.) and lifting up to 50 lbs. unassisted; willing to work rotating shifts, weekends, holidays and overtime as needed; can work independently while flexible enough to work in team setting when needed; exhibits a professional image and a respectful attitude at all times; preferably has previous experience operating a computer.

ADM offers competitive benefit package, including health, dental, prescription drug and life insurance, 401(k)/ESOP with company match and pension.

Relocation benefits may be provided for these positions.

Candidates are responsible for providing their own means of transportation to and from work.

ADM requires a successful completion of a pre-employment drug screen/physical and background check.

ADM is an Equal Opportunity Employer

www.ADM.com/Careers

EMPLOYMENT

EMPLOYMENT

EMPLOYMENT

The Tuff Memorial Home is currently hiring a full time **Activity Director/Aide**. If interested contact Alex Dysthe at 507-962-3275 or email adysthe@tuffmemorialhome.com

Benefits
Competitive Wage
Pension Plan
Friendly Atmosphere



HELP WANTED FULL-TIME APPLICATOR AND OPERATIONS WITH CLASS A CDL

Includes benefits & 401k

CALL 507-825-2008 OR APPLY IN PERSON AT



in Pipestone See Ryan

RECYCLE!



95 YEARS OF PROVIDING GREAT JOBS TO TALENTED INDIVIDUALS!

Always open to add the right individual to our teams.

- Potential positions:
- Sow Farm
 - Wean to Finish
 - Swine Maintenance
 - Feed Drivers
 - Wean Pig Drivers

Relocation packages available.

Located in Southern Minnesota and Northern Iowa!

Full benefit package—health, dental, life, vision, 401k match, short-term, vacation pay, sick pay & more!

Pre-employment drug screen required

To apply call 712-852-8520 www.kerbercompanies.com



HELP WANTED

FULL TIME OFFICE WORK

Looking for person with property insurance background, PC experience, customer service skills, bookkeeping knowledge, phone skills and desire to learn. Experience preferred but not required. Benefit package included.

Call Ron at Heartland Mutual Insurance Company. Lismore, MN 507-472-8216 or email resume and cover letter to Ron at ron@hmicmn.com.

AGROPUR HAS THE FOLLOWING OPENINGS:

Maintenance Techs

Maintains and repairs all production equipment, including motors, valves, boilers, and ammonia compressors. Will perform PMs. Electrical experience and/or previous maintenance experience preferred. Must be highly motivated and able to work in a team or independently.

Production Operators

Operate cheese equipment in a clean and safe environment; good attendance and teamwork required; work only 7 shifts in 2 weeks; must be able to lift 55#.

- Stable, growing business • Great work schedule
- Work only 7 shifts in 2 weeks • Generous benefits package
- Double pay on Sundays and Holidays
- Health, dental and vision insurance at a reasonable cost

✓ Check out our great benefits!

APPLICATIONS AVAILABLE AT:

Agropur, Inc. Hull Facility
332 Division St., PO Box 820, Hull, IA 51239
1/4 mile south of Casey's General Store in Hull
Phone 712.439.6780



AGROPUR



Apply at www.agropurcheese.com

Agropur Inc. is an equal opportunity employer. Pre-employment drug screen required.



SWINE POSITIONS AVAILABLE

New Horizon Farms LLP currently has full-time farrowing positions available at our swine unit near Luverne, MN.

Apply online at www.newhorizonfarms.com or call Mary at 507.825.5462

New Horizon Farms LLP offers a competitive salary along with a great benefit package including, Paid Vacation/Sick Time, Life Insurance, Paid Health Insurance, Employer Funded Health Savings Account, 401 (k) Retirement Plan and Bonus Incentives.

APPLY TODAY!

319 N. HIAWATHA, PO BOX 708 - PIPESTONE, MN 56164
507.825.5462 / 800.906.7447 / 507.825.5877 (Fax)
www.newhorizonfarms.com

Who inspires

our team with fresh ideas, new insights and real faith?

You inspire.

We believe that, "In Christ's Love, Everyone Is Someone," and that each person should be treated with dignity, love and respect. Join us, and help make a difference. You'll enjoy great benefits and receive encouragement and opportunities to grow personally and professionally with the support of your peers and supervisors.

If this sounds like an environment that calls to you, we invite you to join us in serving those who most need our skilled talents and loving hearts.

Nursing Assistants | CNA's | Dietary
Universal Workers | Nurses

Show YOU care. Join us today.
good-sam.com/careers



The Evangelical Lutheran Good Samaritan Society is an affirmative action/equal opportunity employer and does not discriminate on the basis of race, religion, color, national origin, gender (including pregnancy, gender identity, gender expression and sexual orientation), genetic information, age, marital or familial status, disability, veteran status, or other protected status. All faiths or beliefs are welcome. © 2017 The Evangelical Lutheran Good Samaritan Society. All rights reserved. 17-01459

www.Star-Herald.com

Star Herald CLASSIFIEDS

EMPLOYMENT

Elementary Paraprofessional for 2017-2018 school year. Hours: 8:15 a.m. - 3:30 p.m. Candidate must have a two-year degree or 60 hours of college credits or be willing to fulfill the required competencies for eligibility. Person will work directly with students to meet individual needs. Generally, the individual will work with a small number of students in the classroom setting. Candidate will take direction from the classroom teacher and assist to meet student needs. Position opened until filled. Starting Date: November 13, 2017. For more details contact Mr. Jason Phelps at the elementary office. j.phelps@isd671.net or call 507-673-2541 ext. 11. An Equal Opportunity Employer. (11.5-11.9)

Special Education Paraprofessional - multiple openings with SWWC Service Cooperative with placement at the Blue Mound Learning Center in Pipestone, MN. High school degree or GED required. Must pass ParaPro Test within first 3 months of employment. Starting at \$14.41/hour and up, depending on qualifications; working 7 hours per day. Complete online application at www.swsc.org/application. Position will remain open until filled. For more information or if you have questions please contact Steve Rops at 507-825-5858, ext. 2716 or steve.rops@swsc.org. EOE. (11.5-11.16)

EMPLOYMENT

Lutheran Social Service of MN is seeking dedicated volunteers for our innovative new service in both metro and rural areas across the state. I have an opening in Luverne Volunteers interested in sharing their skills, meeting new people and having fun in their community are invited to apply. As a volunteer you will: Do something meaningful and fun. Be an ongoing friend, advocate and resource for an older adult. Provide transportation to medical appointments, grocery shopping and errands and receive a monthly stipend of \$90/client and mileage reimbursement. Contact Gail Sumerfelt at 507-530-2295 (11.9-11.26)

looking for CNAs! Benefits include health insurance, PERA retirement plan, vacation and sick time, holiday pay, and a \$2,000 scholarship available for students! We will provide training or pay for experience. Wages are based on experience level. If interested, contact Darnell Krull at (507) 967-2388 or Sam Quam at (507) 967-2482. (tc)

Dietary Aide: Parkview Manor is looking for part-time Dietary Aides! Benefits include vacation, PERA retirement plan, and holiday pay. Training is available on-site. Wages are based on experience level. If interested, contact Sam or Arlys at 507-967-2482, or come visit us to pick up an application! (tc)

EMPLOYMENT

Help Wanted: Hiawatha Manor Inc. has 2 Direct Support Professional positions available in Luverne, MN. Hours include paid sleep time! Position 1: Every Thursday 2p.m. to Friday 8:30 a.m. and Every Sunday 12 p.m. to Monday 8:30 a.m. Position 2: Every Monday, Wednesday and Friday from 8:30 a.m. to 2 p.m. Applicants must be at least 18 years of age, have a valid driver's license, pass background study, and possess excellent life coaching skills, any additional training needed will be provided. For additional information regarding either position or to request an application call or text your inquiry to 605-530-4440. (11.9-11.26)

Earn Extra Cash At A Rewarding Volunteer Position in Luverne & Surrounding area: Become a Senior Companion by making friendly visits to older adults in need. Senior Companions must be 55 years of age or older; flexible service of 15 hours or more a week earns a small tax free hourly stipend, plus receive mileage reimbursement and other benefits. 507.530.2295 for more information. (11.9-11.26)

Help wanted: part-time position open for a baker and fryer. Early mornings. Experience preferred, but willing to train. Applications available at Teal's customer service counter or call Sherri at 507-283-4429. (10.29-11.16)

Cook: Parkview Manor is looking for a part-time cook! Benefits include vacation, PERA retirement plan, and holiday pay. Training is available on-site. Wages are based on experience level. If interested, contact Sam or Arlys at 507-967-2482, or come visit us to pick up an application! (tc)

RN/LPN: Parkview Manor is looking for a part-time RN/LPN to fill in as needed! Benefits include vacation, PERA retirement plan, and holiday pay. Wages are based on experience. If interested, contact Darnell Krull at 507-967-2388. (tc)

CNA: Parkview Manor is Drivers (CDL-A): Full-Time Holiday/Temporary Sioux Falls, SD Mail Route. \$20.40/hr + Fringe Benefits. Must meet DOT reg. Dizco Inc.: 1-855-979-4510. (11.9-11.19)

MISCELLANEOUS

HAVE A UNIQUE SERVICE OR BUSINESS? Get the word out to over 1.4 million households. Call WIDE AREA CLASSIFIEDS today, 507-359-7326. (tc)

WINDOWS

We custom build and install Energy Star Therm-O-Loc Windows. Call Mike at Adrian Glass for a free in-home demonstration and estimate. 101 E. Pearl, Adrian, MN 56110. 507-483-2228 or 605-770-7677 or email mbyler@santel.net. (tc)

RENTALS

For Rent: one-bedroom apartment near downtown Luverne. \$290 per month. No Pets. Call 605-201-6427. (tc)

Mobile Home for rent in Luverne: two-bedroom, one-bath, all appliances included. Water and sewer included. Call 605-366-7695 (11.5-11.23)

For Rent: tow-bedroom duplex in Luverne. Attached garage, stove, refrigerator, washer and dryer included. No smoking and no pets. References required. Call 507-283-9450. (11.5-11.23)

For Rent: two-bedroom apartment. Off street parking, on-site laundry, wall a/c, heat and water provided. Close to Senior Center and Post Office. Call 507-290-0266. (11.2-11.19)

For Rent: Two-bedroom apartment with central air. Water and heat and one-car garage included. On-site laundry. Quiet area. No smoking and no pets. Call 507-920-0406. (10.29-11.16)

For Rent: single car garage in Steen, MN. Call 507-220-7686. (10.22-11.9)

House for rent in Luverne: Completely remodeled. Several bedrooms, two-bathrooms, double garage, no pets. Nice location. Call 507-283-8151. (10.22-11.9)

WORK WANTED

Work wanted for a senior companion: will do light house-keeping, laundry, groceries and shopping. Call 507-962-3214. (11.5-11.23)

WANTED

Wanted: snow removal jobs in the Luverne Area. Call 507-920-0574 to inquire. (11.2-12.31)

CARDS OF THANKS

Thank you for 90 years of blessings - a loving family, good friends and a wonderful community. I was over whelmed by so many celebrating my birthday at the Senior Dining and the great family dinner and party at church. Thank you for your beautiful cards, gifts and well wishes. They will never be forgotten.
**God Bless Everyone,
Neva Clausen**
(11.5-11.9)

We are so thankful for the love, kindness and thoughtfulness from our friends, neighborhood and family during this difficult time. Thank you for the flower arrangements, food and prayers. We also would like to thank the Sheriff Department and the Ambulance Crew for their quick response on that day. Our hearts are filled with many emotions. We miss Robert very much but we know he is in a better place.
Sharon, Michelle, Meagan and Melissa Riddle
(11.5-11.9)

Many thanks to all who remembered us with cards, phone calls, food, visits and prayers. We are truly blessed.
Betty and Orvel
(11.5-11.9)

CARDS OF THANKS

The Luverne Cardinals Special Olympics Team would like to say Thank You!!!! What a wonderful, awesome community & surrounding communities we live in!!! Our Fundraiser on Oct. 6 was a fantastic!!! We would like to extend a Special Thank You to the following businesses: Quality Printing, Papik & Herman Motors, Grand Prairie Event Center, The Rock County Pork Producers, Teals, Mickie's in Ellsworth, Ellsworth Meat Locker, Bill Korth Auctioneering & all the businesses we did not mention, we are forever grateful for your continued support. Without you none of this would be possible.

**Thank You
The Luverne Cardinals
Special Olympics**
(11.5-11.9)

A special thank you to First Farmers and Merchants for packaging the bags for September.

Luverne Backpack Program
(11.9-11.12)

FOR SALE

For Sale: Full-size bed with mattress and box spring and a dresser to match with mirror. Call 507-962-3767 (11.5-11.9)

For Sale: one bale spear, one bale fork for three point or bucket and a 6-foot three point blade. Call 507-920-6831. (10.29-11.2)

1993 Ford Ranger pickup. Runs good. Call 507-962-3113. (10.22-11.9)

MANITOU GROUP

Now Hiring!

\$1000 Sign-On Bonus To Qualified Applicants

Manitou in Madison, SD is now hiring for 1st and 2nd shift manufacturing positions that include:

Welding, Assembly, Paint, Fabrication and Mechanics

Stop by the Manitou facility to complete an application.
915 SW 7th Street, Madison SD 57042
Pre-employment drug screen is required.
Manitou is an Equal Opportunity Employer.

West Rock Construction INC.

Concrete Wall Professionals

FIELD CREW POSITION

FULL OR PART-TIME, YEAR ROUND WORK

Full benefits package including overtime, vacation, health, dental, Simple IRA and end of year bonus.

APPLY IN PERSON at 1995 350th St, Rock Valley, IA 51247
OR CALL: Business Phone 712-982-2007
OR ONLINE: www.westrockconstruction.net

Find Us Online!
star-herald.com

Oakwood Apartments

401 Oak St., Ellsworth

• 1 Bedroom Unit Available

Unit Available
Water, Sewer & Garbage Included.

Rent Based on Income
AVAILABLE IMMEDIATELY

Van Binsbergen & Associates, Inc.
320-269-6640 ext. 22

Equal Housing Opportunity

www.vanbllc.com

Donate A Boat or Car Today!

Boat Angel

"2-Night Free Vacation!"
800-700-BOAT
(2628)

www.boatangel.com

It's all about Friends, Family & Fun!

Best Price • Best Selection

Over 250 in Stock

2207 7th St. NW • Rochester, MN • 507-282-7682 • familyfuncenter.com

ExpressAg LLC

Focused on Farmers

Employment Opportunity Full-Time Operations/Applicator

Responsibilities Include:

- Maintain and operate trucks
- Drive semi-truck for deliveries
- Responsible for the recording and maintenance of the application data and log books.
- Assist in other duties as assigned, including inventory control and warehouse duties.

Express Ag is a family owned agriculture retail supply company located in Luverne, MN. If you are interested, stop in and pick up an application or apply online at www.expressag.com.

Questions? Call Alan or Jerry at 507.449.4500

612 West Hatting Street • Luverne, MN 56156
p: 507.449.4500 • www.expressag.com



Minnesota Classified Advertising Network



EMPLOYMENT

RAILROAD VEGETATION CONTROL:
Full-time traveling opportunity starting in January 2018, 60-80 hours/week, \$13-\$15/hour starting, meal allowance, paid lodging, health/dental, 401(k) & Paid time off. RAW, Inc. in Cooperstown, ND. 888/700.0292 info@rawapplicators.com www.rawapplicators.com

VENDING MACHINES

VENDING ROUTES FOR SALE:
Great cash income! Locations provided. Complete turnkey operation, plus helps support breast cancer research. Full details, call 866/668-6629 Website: www.vendingforhope.com

FEED/SEEDS/GRAINS

LOSING SOYBEAN YIELD
to white mold? New EPA registered seed treatment available. Ask for Heads Up® seed treatment. Call 866/368-9306 or view data at www.headsupst.com

MISCELLANEOUS

SAWMILLS
from only \$4,397.00 Make & save money with your own bandmill. Cut lumber any dimension. In stock, ready to ship! Free Info/DVD: 800/578-1363 Ext.300N www.NorwoodSawmills.com

A PLACE FOR MOM

The nation's largest senior living referral service. Contact our trusted, local experts today! Our service is free/no obligation. Call 844/347-2104

DONATE YOUR CAR

truck or boat to Heritage For The Blind. Free 3-day vacation, tax deductible, free towing, all paperwork taken care of 800/439-1735

MISCELLANEOUS

STOP OVERPAYING FOR YOUR PRESCRIPTIONS!
Save! Call our licensed Canadian & International pharmacy, compare prices & get \$25.00 OFF your first prescription! Call 877/210-2257 Promo Code: CDC201725

DISH NETWORK

190+ channels. Free install. Free hopper HD-DVR. \$49.99/month (24 mos.) Add high speed internet - \$14.95 (where avail.) Call today & save 25%! 855/562-4309

GOT KNEE PAIN?

Back Pain? Shoulder Pain? Get a pain-relieving brace - little or no cost to you. Medicare patients call health hotline now! 800/755-6807

ADVERTISE HERE STATEWIDE IN 260+ NEWSPAPERS FOR ONLY \$279 PER WEEK!
CALL 800-279-2979