

# Rock County STAR HERALD

Rock County's oldest business, printing since 1873

Thursday, July 19, 2018

## Four-plex to go up on West Barck cleared lots

*It's among several local efforts to meet housing demand by construction workers next year*

By Lori Sorenson

Two more previously blighted properties in Luverne will see new construction following action at the June 26 City Council meeting.

The city is working on an agreement and land sale with Cleveringa Construction for the development of two lots — 104 and 108 West Barck Avenue.

Merlin Cleveringa will develop the lots into one four-unit multi-family housing complex, and the new housing units will be market rate rentals.

The sale of the land will be for \$10,000 according to a development agreement between Cleveringa and the City.

He said the 4-plex will be ready for occupancy this fall and will initially serve as rentals to meet housing demand when tru Shrimp ramps up construction with 1,000 workers in town.

Each of the four units will have four to five bedrooms, two bathrooms, laundry and a shared kitchen and living area.

The rental prices will be considered market rate, and Cleveringa said he is working with contractors to arrange group rental agreements with construction teams, rather than with individual workers.

Long-term, he said the units will be converted to single-family dwellings for sale, but if rental demand exists after the construction boom eases, he would continue to manage them as rental housing.

The Cleveringa housing on East

**Housing/**continued on page 5A



Mavis Fodness photo/0719 Hot Dog Night 2018

Skies began to darken as thousands gathered Thursday night, July 12, for Luverne's 56<sup>th</sup> Annual Hot Dog Night. Events resumed between showers until a thunderstorm ended outdoor activities — including the live band — around 9 p.m.

## Rain showers cool off Hot Dog Night heat wave

By Mavis Fodness

A variety of weather fronts descended on visitors of Luverne's 56<sup>th</sup> annual Hot Dog Night Thursday, July 12.

By the 5:30 p.m. serving time, the National Weather Service in Sioux Falls had issued a heat advisory for the second consecutive day, with temperatures in the 90s and "feel like" temperatures ranging from 100 to 105 degrees.

About an hour into the event, a cold front passed through Luverne bringing relief to the heat but resulting in scattered showers through the area.

Hot Dog Night visitors moved under tents and awnings as the showers passed.

**Hot Dog Night/**see page 3A



At left, sisters 8-year-old Giada (left) and Antonia Torres, age 2, play in the puddles. Donning balloon hats were (from left) Brooklyn Wicks, Ryan Fonkert (back), Madeline Fonkert, Marissa Fonkert and Katelyn Fonkert.



## Remodeled 4-H food stand makes debut at next week's Rock County Fair

By Mavis Fodness

When the Rock County Fair opens Wednesday, July 25, diners at the 4-H food stand are in for a pleasant surprise.

Missing is the hodgepodge of used kitchen appliances garnered over the decades by local ag society

members. Now the facility features sparkling commercial-grade appliances. "When it (the kitchen) was furnished back then, the ag society made do with donated items," said society treasurer Lee Sells.

"Because of that, a lot of the equipment was in bad need of repairs."

The 4-H program manages the food stand during the four-day event, and 4-H families volunteer for the work shifts.

Because of the potential failure of the old kitchen equipment, Sells and ag society members applied for and received a grant through the

Frank Boon Trust. The \$35,000 grant allowed the purchase of new equipment. Various local organizations and businesses worked together to finish the food stand for this year's fair.

The facility now sports a new grill, fryers, grill hood, freezer, refrigerator, hand-washing station and prep

tables. It also has a new coat of paint on the walls and new countertops.

Proceeds from the food stand are used for local 4-H programming.

The July 22 Announcer will feature front-page details about the fair and all its offerings, as will a July 26 Star Herald news story.

## Phase 2 of Luverne Loop circles the city

By Lori Sorenson

Amid construction planning for major housing and industry developments in Luverne, progress is quietly continuing on the Luverne Loop trail.

Phase 1 of the trail is complete. It starts at the Veterans Home pond and circles the northwest neighborhoods of town and ends up at Dodge Street west of the school.

Phase 2 — 1.7 miles — is shaping up for a late 2018 completion.

It starts where Phase 1 let off on Dodge and continues along the west edge of town along Poplar Creek, some pocket parks, around The Lake and the ice arena and then to Highway 75 at the Exchange State Bank.



Lori Sorenson photo/0719 loop construction

Workers complete the Highway 75 intersection of the Loop near the Exchange State Bank corner on Gabrielson Drive several weeks ago.

**Loop/**continued on page 8A

## Locally produced film touts renewable wind energy

By Mavis Fodness

For three days last week Hardwick and Rock County were center stage for a Geronimo Energy promotional video.

"We are putting together stories about what it is like living in a community with renewable energy," said Lindsay Smith, Geronimo Energy director of marketing and communications.

Smith and a three-person film crew also plans to complete stories about the Courtenay, North Dakota, Wind Farm and the community solar projects in Stearns County, Minnesota.

The local Prairie Rose Wind Farm consists of 119 wind turbines operating in northwest and north central Rock County. Townships include Springwater, Rose Dell and Denver.

A maintenance shop is located in Hardwick.

Geronimo Energy is a renewable energy development company headquartered in Minneapolis.

It established the Prairie Rose Wind Farm that began generating electricity in late 2013.

The farm was later sold and is now operated by Enel Green Power of North America.

The three days of filming included interviews with local officials.

Hardwick City Clerk Tammy Johnson, who watched the wind farm develop over the past several years, was one of those interviewed.

"Once we educated ourselves on the environmental benefits of wind energy, I believe most of us

**Renewable energy film/**see 2A



7 28028 20389 19

Opinion  
Obituaries

Page 4A  
Page 7A

Sports  
Public notices

1B  
5B

Volume 143, Number 29

Luverne, MN 56156 USPS 468-040

[www.star-herald.com](http://www.star-herald.com)

How to reach us

507-283-2333 PO Box 837  
editor@star-herald.com Luverne, MN 56156



COMMUNITY CALENDAR

Meetings

**Parkinson’s Support Group** will meet at 1 p.m. Thursday, July 19, at St. John Lutheran Church in Luverne. Call Dianne at 507-530-3307 with questions.

**Lady Luverne Red Hats** will meet at 4:30 p.m. Thursday, July 19, in the parking lot east of St. Catherine’s Church in Luverne to carpool to Brandon for dinner at the Brandon Steakhouse and a play, “Bye, Bye, Birdie.” Call Donna at 283-8019 to pre-register.

**MS Support Group** will meet at 7:30 p.m. Thursday, July 19, at Southwest Health and Human Services in Luverne. All persons with MS, family and friends are invited. For info call 283-2069 or 283-2964.

**Blue Mound Cemetery Association** will host its annual picnic at 7 p.m. Monday, July 23, at the home of Randy and Kathy Remme.

**Narcotics Anonymous** meets at a new time: 7:30 p.m. Tuesdays and Fridays in the basement of St. Catherine Catholic Rectory, 203 E. Brown St., Luverne. Use east door. Call 507-220-0137 with questions.

**Hardwick Goal Seekers** meet every Monday in Hardwick City Hall for the purpose of support and encouragement for weight loss journeys. Weigh-in begins at 6 p.m., and the meeting starts at 6:30 p.m. Call Glenda, 449-0568, with questions.

**Women’s Alcoholics Anonymous** meets at 8 p.m. Mondays in the United Methodist Church.

**Alcoholics Anonymous** meets at 8 p.m. Wednesdays and Saturdays in the United Methodist Church, Luverne. Call 605-321-4324.

**Alcoholics Anonymous** meets from 8 to 9 p.m. every Tuesday in Runals Memorial Hall, Edgerton. Call Naomi, 507-215-2956.

Summer Bash at the Plaza July 19

Tonight (Thursday) from 5-7 p.m. will be a water-themed carnival, Splish Splash Summer Bash, at the parking lot of the History Center on East Main Street. The Rock County Historical Society will serve barbecues, chips, cookie and a beverage for \$3.

Registration open for students new to Luverne district

New residents to Luverne School District #2184 should come to respective school offices and register students for the 2018-2019 school year.

The high school/middle school office is open for new students to register. To make an appointment to register for students in grades 6-12, call the middle school/high school office at 283-4491.

The elementary office will be open for new students to register starting Monday, Aug. 1. Parents of elementary students in grades K-5 can call 283-4497.

The new school year starts on Tuesday, Sept. 4.

Free food July 19

New Life Celebration Church will offer free food from 4:30 to 5:30 p.m. Thursday, July 19, in the Luverne Senior Citizens Building on East Lincoln Street in Luverne for those having trouble putting food on the table. Bring your own boxes and bags. Call 283-4366 with questions.

Urgent: Red Cross Blood Drive July 23

The American Red Cross is facing an emergency blood shortage and is issuing an urgent call for donors of all blood types to give blood.

Plan now to donate from 1-7 p.m. Monday, July 23, at the Red Cross Blood Drive at Grace Lutheran Church in Luverne.

To schedule an appointment, use the free Red Cross Blood Donor App, visit RedCrossBlood.org or call 1-800-RED CROSS (1-800-733-2767).

Free meal at United Methodist July 25

The Luverne United Methodist Church will host a free community meal beginning at 5:30 p.m. Wednesday, July 25, at the church.

Dodge ‘Raminator’ coming to fair

Papik Motors will bring the monster truck “Raminator” to the Rock County Fairgrounds in Luverne Friday and Saturday, July 27 and 28, for family entertainment. The monster truck recorded a speed of 99.10 mph to become the Guinness World Record holder for fastest monster truck. The truck will be at the fair for people to climb aboard and take photographs.

Wind Production Tax Generated Locally since 2013

Renewable energy companies pay a production tax based on the amount of electricity produced each year. Locally, 80 percent of the tax (listed below) is used at the county level with the remaining 20 percent split among the townships (specific amounts at bottom) where the wind turbines are located.

Rock County						
	2013	\$	73,038.40			
	2014	\$	613,816.73			
	2015	\$	717,143.81			
	2016	\$	660,550.93			
	2017	\$	678,358.92			
	2018	\$	660,345.08			

Township	2013	2014	2015	2016	2017	2018
Beaver Creek	\$ 795.60	\$ 677.73	\$ 835.04	\$ 724.71	\$ 1,118.36	\$ 1,872.32
Denver	\$ 9,264.60	\$ 82,039.08	\$ 95,834.11	\$ 88,214.64	\$ 90,375.50	\$ 87,416.72
Martin	\$ 237.60	\$ 235.06	\$ 259.34	\$ 389.12	\$ 429.45	\$ 673.48
Rose Dell	\$ 6,659.00	\$ 58,965.58	\$ 68,880.77	\$ 63,404.16	\$ 64,957.39	\$ 62,850.77
Springwater	\$ 1,302.80	\$ 11,536.74	\$ 13,476.67	\$ 12,405.12	\$ 12,709.06	\$ 12,292.98

Renewable energy film made in Rock County/continued from 1A

are proud to be a part of it,” she said.

“I get a lot of calls from people who may be in the footprint of the second phase wondering when it is going to happen.”

Geronimo Energy officials recently updated Rock County commissioners about Phase 2 of the Prairie Rose Wind Farm — about 100 additional turbines that straddle the Rock and Pipestone county line.

The estimated \$160 million project won’t begin until 2021 or after.

\$800,000-plus generated locally in annual tax

Prairie Rose is one of three wind farms operating in Rock County.

Community Renewables operates four turbines in Martin Township.

Rock County Energy operates seven turbines in Beaver Creek Township.

All three pay annual taxes based on production.

The trio contributed \$825,431 in 2018 to the budgets of Rock County and the townships where the turbines are located.

In the past five years, more than \$4.25 million has been divided 80 percent to the county and 20 percent split among the townships where the turbines were located.

The county uses its portion to repay almost \$5 million in capital improvements bonds.

“When we knew we were going to receive the tax, we accelerated our five-year road plan,” said Commissioner Stan Williamson, who was also interviewed for the promotional video.

“Instead of adding to the levy, we pay for the bonds through the production tax.”

In 2014 the commissioners secured a \$3.9 million bond for road improvements.

In 2015 a \$1 million bond



Mavis Fodness photo/0719 Geronimo Video

Part of a promotional video about living in a community with renewable energy was filmed in Hardwick Wednesday, July 11. Local volunteer fireman Tom Haas (center, leaning on firetruck) was among the local residents included in the filming organized by Geronimo Energy Director of Communications and Marketing Lindsay Smith (left), videographer Chris Peterson, Tom Haas, cameraman Jake Lundell and Janie Peterson with Peterson Productions in the Twin Cities.

helped complete the county-wide high-speed broadband project.

After the yearly bond payments, the rest of the tax money is set aside to purchase highway department equipment.

In the past five years, over \$850,000 in production tax money was divided among the townships with Denver Township receiving the most (\$365,726) during that time-frame.

“It’s really a blessing,” said Denver Township Supervisor Kyle Hemme.

Since receiving the production tax, Denver Township officials have built an adequate budget reserve, invested in township roads and kept the township tax levy flat at \$50,000.

More long-range plans are being developed.

“We have to be responsible and make improvements in the community,” he said.

Community fund available to those in farm’s footprint

The community fund is available to the communities located or operating within the wind farm’s footprint.

Annually the local committee decides among written applications how the \$40,000 is distributed. This year’s recipients will be announced later this summer.

The committee disbursed \$145,000 since the fund was established.

Cities of Hardwick and Jasper received the largest amounts since the fund was started.

Hardwick received more than \$65,000 for fire department equipment and for the community hall remodel

project.

Jasper received more than \$69,000 for new fire department turnout gear and a new park shelter.

Other recipients included Rock County Sheriff’s Department, Hardwick Community Club, Rock County Historical Society and five student scholarships.

Denver Township is currently partnering with the city of Hardwick to purchase a new chassis for the fire department’s tanker truck.

The city of Hardwick received \$30,000 from the Prairie Rose Minnesota Community Fund for a used chassis for the tanker, but the sale fell through.

Denver Township, however, agreed to help buy a new chassis estimated at \$70,000.

“We are agreeing to pick up the rest of the tab,” Hemme said.



# Dial-A-Specialist

## Your One Stop Guide to Local Businesses



**DR. MICHAEL SMITH**  
Most Insurance Accepted  
www.rockcountychiropractic.com  
283-2561 • 103 E. MAIN, LUVERNE  
Monday 7:30 a.m. - 6 p.m. • Tuesday 7:30 a.m. - 3 p.m.  
Wednesday 7:30 a.m. - 6 p.m. • Thursday 7:30 a.m. - 1 p.m.  
Friday 7:30 a.m. - 5 p.m.



• Men, Women & Children's Health  
• Custom Orthotics • Kinesiotape • Athletic Care • Massage Therapy • Work & Auto Injuries • Postural Restoration



**Chantel Connell**  
Sales Representative  
117 W. Main, Luverne, MN  
507-283-2333



**Rick Peterson**  
General Manager



**LUVERNE HEALTH & WELLNESS**  
Codie Zeutenhorst, D.C., CAC  
✓ Acupuncture ✓ Chiropractic Care  
✓ Family Care ✓ Sports Injuries  
✓ Kinesiotape ✓ Auto & Work Injuries  
Acupuncture and Massage Available  
Kris Van Der Brink M.T. & Amy Rosales M.T.  
507.449.4400  
www.luvernechiro.com  
109 S. Freeman Ave. | Luverne, MN

• Chiropractic



**COMRAY COMPUTERS**  
Computer Repair and System Builder



**Ray Hansen**  
1726 140th Ave.,  
Luverne, MN 56156  
507-669-2621  
comraycom@gmail.com

• Computer



**Rock County EYE CLINIC**  
507-283-2345  
104 N. Freeman Ave.  
Luverne, Minnesota



**Dr. Sandra Carman**

• Eye



**Papik MOTORS**  
I-90 Luverne, MN  
Box 536 • 801 West Commerce Road  
Luverne, MN 56156  
(507) 283-9171  
(800) 634-7701  
www.papik.com



Certified pre-owned  
Jeep

• Automotive



**Luverne MINNESOTA**  
Love the life!  
City Offices  
PO Box 659, Luverne, MN 56156  
507-449-2388 (24 hour voice mail)  
www.cityofluverne.org

• City



**Dakota Land Surveying and Engineering, Inc.**



**Steven B. Kor**  
Professional Engineer  
Registered Land Surveyor

2000 W. 42nd Street, Suite B-6  
Sioux Falls, SD 57105  
605-334-4882  
605-334-5745 Fax

506 Almar  
Luverne, MN 56156  
507-283-3803  
steve.dis@midconetwork.com

• Land Surveying



# Landowners meet with representatives from Walleye Wind Farm

By Mavis Fodness

Renewable Energy Systems hosted a landowner meeting last week to answer questions about plans for a \$200 million wind farm.

RES plans to construct 36 to 40 wind turbines in Martin and Beaver Creek townships in the southwest corner of Rock County.

Scott Jansen and Lisa Bellen with RES conducted the 90-minute meeting Tuesday night, July 10, at the Hills-Beaver Creek High School in Hills.

About 50 people filled the school's commons area. Jansen outlined the proposed wind farm, which when built will be the second largest in Rock County.

He said the planned farm would encompass 114,000 to 118,000 acres. Plans don't place turbines in nearby Iowa or South Dakota.

"We prefer to stay in Minnesota and Rock County," Jansen said.

The farm is limited to 100 megawatts based on existing transmission line capabilities with tower height restricted to less than 500 feet.

Turbine location is still under consideration as the 25-plus-year contracts are completed with interested landowners. Contract negotiations will wrap up this fall.

Planners will then determine placement of each turbine based on contract location and setback requirements.

"At the end of the day, the farm designs itself," Jansen said.

Because of its size, the Walleye Wind Farm would

need state approval before construction could begin. Approval is expected in 2019 with project completion by the end of 2020.

Those in attendance July 10 asked questions about landowner payments, setback requirements, decommissioning and noise restrictions.

Jansen said generally one turbine minimally generates just over \$12,000 annually for the landowner.

The state requires setbacks for wind farms over 5 megawatts to be at least 500 to 1,500 feet away from homes to meet the state's noise standard.

The cost to decommission the wind farm is built into the funding and means all equipment is removed from 4 feet underground and above.

Three wind farms are currently operating in Rock County:

- Rock County Energy — seven turbines in Beaver Creek Township.

- Community Renewables — three turbines in Martin Township.

- Prairie Rose Wind Farm — 119 turbines in Springwater, Rose Dell and Denver townships.

The three entities generated over \$825,000 in wind production tax in 2018 based on 2017 production. The county receives 80 percent of the tax and 20 percent is divided among the townships where the turbine is located.

When operational, Walleye Wind Farm is estimated to contribute an additional \$400,000 in local annual production tax.



Mavis Fodness photo/0719 Hot Dog Night 2018

Attendees at hog dog night in downtown Luverne head for cover during a sudden downpour. Activities resumed after the brief early evening shower stopped. **Below right**, a dachshund named Moose won first-place male division in the 11<sup>th</sup> annual Wiener Dog Beauty Pageant. The 18-month-old dog, owned by Jessi Landry of Sioux Falls, dressed as a loofa. Between flame-ups on the grill, Mark Steensma (**below**) drops more hot dogs on the grate outside of WildFlowers Coffee Boutique.

## Hot Dog Night cooled by rain showers/continued from page 1A

The 11<sup>th</sup> annual Wiener Dog Beauty Pageant and 15<sup>th</sup> annual Wiener Dog Races went on as scheduled.

Male beauty pageant winner was Moose, dressed as a loofa and owned by Jessi Landry of Sioux Falls. Second was Remy, dressed as a banana split and owned by April Norman.

Female beauty pageant winner was Myla, owned by the Austin and Sam Westly family of Sioux Falls. Myla was dressed as Dorothy from the Wizard of Oz, with family members dressed as Oz characters. Second place was Gracie, a queen with royal cloak and crown, owned by Autumn Norman.

Zoey, owned by Paul Wagner of Sioux Falls, won the wiener dog race, with Jazzy, owned by Misty and Rick Kuhnert of Brandon, second, and Precious, owned by Mary Kraayenhof of Luverne in third place.

By 9 p.m., however, thunderstorms moved into the area bringing an early end to Hot Dog Night events, including the outdoor concert.

The Luverne area received more than 2 inches of rain.

"You can't do anything with weather," said Jane Wildung-Lanphere, Luverne Area Chamber director.

The evening activities were deemed a success with very few of the estimated 15,000 hot dogs left over.

"I think everyone is satisfied," Lanphere said. "People mustered through the weather."



# Public campground opens in Ellsworth

By Mavis Fodness

An idea three years ago to update restroom fixtures at the Ellsworth ballpark blossomed into a city campground that opened this summer.

Ellsworth City Council member Spencer Swanson said the city received \$2,000 for the restrooms in 2016 from the Lyon County, Iowa, Riverboat Foundation.

The mini grant started a three-year \$100,000 investment project for the Ellsworth campground.

"When we got the grant, it kind of spiraled from there," Swanson said. "We didn't originally think campground."

Originally the council planned to update the existing restrooms at its ballpark. Rotting sills prompted discussions about replacing the facility, adding showers and a campground.

Ellsworth received two additional \$2,000 mini grants in subsequent years.

In 2017 the grant was for electrical hookup costs and this spring's grant is meant for picnic tables.

The campground is located on city-owned property south of the two ballfields and includes an existing shelter house. The site is east of the Parkview Manor Nursing Home.

The campground consists of 10 camping areas with electrical hookups plus a designated tenting area for additional campers.

Swanson, a camping enthusiast himself, said he visited community campgrounds including Hills, Magnolia and Fulda for campground ideas.



Mavis Fodness photo/0712 Ellsworth Campground

Ellsworth City Councilman Spencer Swanson stands in front of signage for the newly developed campground in Ellsworth. The project began three years ago when the city received a grant to purchase new restroom equipment.

Ellsworth's campsites are 35 feet by 75 feet with 35 feet between sites. Each has a fire ring and the new restroom/shower facility is handicapped-accessible.

An existing playground is located nearby.

Per night camping fees are \$15 for an electric hookup spot and \$10 for tenting. Visitors self-register to spend the night at a soon-to-be-erected drop box.

Along with the drop box, Swanson said the city is still placing the finishing touches on the campground and in the new restrooms.

The campground has already hosted a small

number of visitors.

Most recently, campers stayed at the campground while visiting a family member in the nursing home and organizers of a recent softball tournament used a camping spot for an air-conditioned camper over one humid weekend.

City officials recognize the campground won't generate excess funds for the city and they view the project as an additional public service.

"It brings people to town. It shows people what we have to offer," Swanson said.



Greetings may be sent to 120 W Warren, Luverne, MN 56156

## Lord Grizzly Gallery features Lindsay Carone

Coffey Contemporary Arts (CCA), an arts exhibition and education facility in Luverne, is featuring artist Lindsay Carone for Lord Grizzly Gallery's newest exhibit, "Offering." Carone is a New York-based American artist working primarily in sculpture, installation and textiles.



According to gallery owners and curators Cody and Nicole Henrichs, Carone's recent work for "Offering" reflects her interest in the relationships between spirituality and consumerism in terms of how "awe, aspiration, desire, and self-improvement are communicated in both sacred or spiritual spaces and in the commercial and consumer sphere." Carone's art will be on display at Lord Grizzly Gallery through Aug. 24. Hours are from 10 a.m. to 8 p.m. Thursday, from 4 to 8 p.m. Friday and from 10 a.m. to 9 p.m. Saturday. The display is free and open to the public. Appointments can be made through cca.t4d@gmail.com or by calling 401-500-3057.

6th Annual

Dream Makers Ride

Starting & ending at Mickie's in Ellsworth

July 21, 2018

Registration 11-11:45am

Ride leaves at noon

"I wish to go to Walt Disney World® Resort."

.....

Addysen, Round Lake • Respiratory Disorder

All vehicles welcome on ride

Transform lives, one wish at a time.\*

www.mn.wish.org

Benefiting

MAKE-A-WISH.

Minnesota

**Tickets**

\$25 - All Events

\$10 - Hog Roast

\$10 - Dance

**Following Ride**

Mickie's - Ellsworth

Hog Roast - 6:00pm

Silent Auction - 11am until 6pm

Live Auction - 6:00pm

Street Dance - 8pm-12am

Pirate Taxi

For Information Call:

Nila Lorenzen • 507-220-0250

**INJURED AT WORK?**

**DISABILITY DENIED?**

**Contact Us Today**

**For Free Advice**

Workers' Compensation

Long-Term Disability

Social Security Disability

507-923-4169

**www.GetFields.com**

Steve Fields

Minnesota Attorney

Justin Kemp

Owner

\*Commercial

\*Business

\*Residential

\*Ag \*Industrial

PO Box 803 • Luverne, MN 56156 • 507-920-6961

**Wet basement?...**

We've got you covered!

**AMERICAN**

**WATERWORKS**

**Free Estimates. Call Today!**

**1-800-795-1204**

Radon | Foundation Repair | Basement Waterproofing | Crawl Space Repair



Good Clean Living

Life's path continues to intersect with Sunrise Motel

Standing in my son's backyard pushing my granddaughter on her swing, she instructs me, "Higher Grammy! Higher!"



I'm facing north, staring at the former Sunrise Motel at the west end of Main Street between RCO and the old Ripley gas station.

The motel is being remodeled by John and Vinnie.

It's one of those "top-secret, right out in the open" sorts of operations. They are doing something, but no one knows exactly what. Cars, trucks, trailers and contractors have been coming and going to the job site for weeks. John and Vinnie are often seen working late into the summer evenings — but what the heck are they doing?

(I graduated with John and Vinnie. People have been wondering what the heck they are doing for 40 years.)

One thing I love about small town living is how over time people, events and locations intertwine.

My husband and I spent our wedding night at the Sunrise Motel. It was July 19, 1986. Having never been good at planning, we left our wedding dance southwest of Luverne at 2 a.m. with no place to go. The sign at the Sunrise Motel flashed "vacancy" so we took them up on the offer.

Earlier that day my mom had used a thread and needle to secure an unpredictable zipper on my wedding dress. That night at the Sunrise Motel, my husband used a pocketknife to cut me out of it. He always carries a pocketknife and he's been getting me out of tight spots ever since.

About 10 years after that I became friends with the Sunrise Motel owner who was an avid art promoter. She convinced me my flower photography was actually art and I sold a few prints. "Photographic artist," is now a line on my resume.

"Hey Brenda."

It was Vinnie himself calling

THE NORTHVIEW

By Brenda Winter, Columnist

One thing I love about small town living is how over time people, events and locations intertwine.

from across the lawn. Being the (former) investigative journalist that I am, I carefully crafted a question.

"What's the deal?"

Vinnie answered by guiding my granddaughter and me through the construction site. The plan of the current owners of the former Sunrise Motel, an entity called Good Clean Living, is to create two, two-bedroom apartments on the north end of the building and eight efficiency apartments on the south end.

The goal is to have 10 rental units available for next year's expected influx of workers.

"It won't be a motel," Vinnie says. And, for the record, he adds, "This is all being done with private money."

The three-year-old is not impressed with affordable housing or forward-thinking, privately funded housing developments. She wants to swing.

And so we return to her side of the property line. She touches her toes to the sky and says, "Higher, Grammy!" and a hammer continues to clamor away at the site of the former Sunrise Motel.

Election season is upon us; tell us what you think

STAR HERALD EDITORIAL

Voting is both a right and a privilege, but it's also an important responsibility of every eligible citizen.

The primaries are only a few weeks away, and the 2018 election season is shaping up to be a pivotal moment of changing leadership in many levels of government, so it's never been more important to research ballot options and the candidates you'll support.

For our local elections, we hope you'll turn to the Star Herald for thorough, unbiased information in Q and A profiles of city council, school board and county commissioner candidates.

As we do for each election cycle, the Star Herald news team will soon send the candidates in contested races a list of questions about themselves and issues facing their districts, and they'll have equal opportunity to provide thought-out, detailed answers.

Those answers, in their own words, will be printed in upcoming issues of the Star Herald, and we hope you take the time to read them.

What we also do for each election

cycle is restate our Opinion Page policy for letters to the editor. We protect this space for readers to share their opinions on matters of community interest, and during elections, people tend to have strong opinions.

We will not, however, print letters submitted for the express purpose of endorsing or condemning a candidate. That information is reserved for expression in paid advertisements and is handled as such.

Letters must reflect the original thought of the writer (not a form letter sent by a campaign), they must be factually accurate and must adhere to our usual policy of 300 to 500 words.

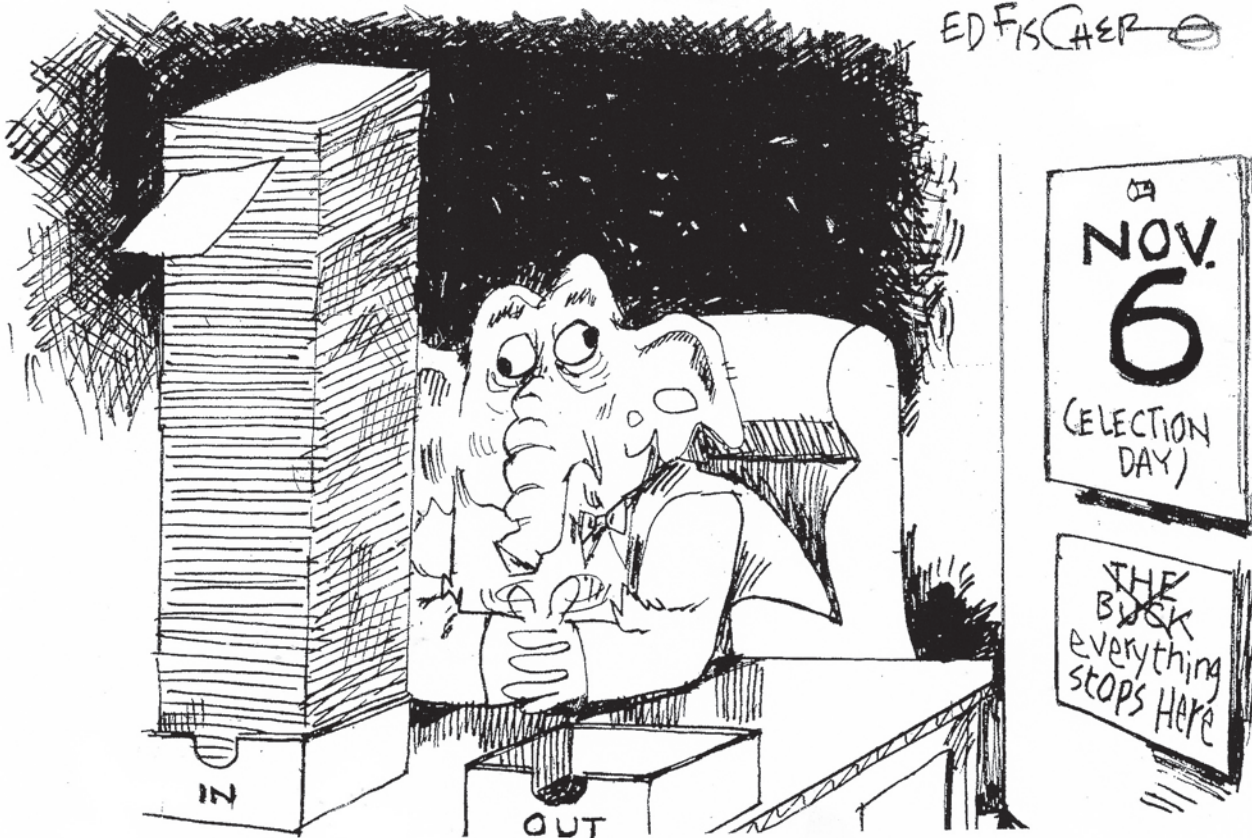
The Star Herald will not print letters containing personal attacks or vulgar letters or any anonymous submissions, and finally, we will not

accept political letters in the week just prior to Nov. 6, because it would leave no opportunity for rebuttal, if need be.

While the rules may seem stern, they're in place to encourage fair expression of views and opinions of our readers, and we truly hope to see letters to the editor about issues and topics that matter to us in Rock County.

Meanwhile, our news team will cover candidate forums and other political events leading up to the general election in an effort to provide every resource possible for an educated voting public.

For questions about our policies or to share ideas on how to improve Star Herald election coverage, call editor Lori Sorenson at 507-283-2333 or email editor@star-herald.com.



Planting 'seeds' for more local improvements, activities

Another great Hot Dog Night has come and gone.

You're probably thinking summer has hit the midway point and you're wondering, "Where did the summer go?" But then you realize there's a lot more to come before we close the book on the summer of 2018.

The Rock County Fair gets underway next week.

There is a full slate of activities starting with 4-H exhibit judging Monday afternoon.

Wednesday also features a partial day of 4-H events as well as the Talent Show/4-H fashion review in the comfort of the air-conditioned Palace Theatre.

Thursday features more 4-H events, evening races, a watermelon feed sponsored by Teal's, and one of my favorites — the Rock Nobles Cattlemen's Association beef feed



FOR WHAT IT'S WORTH

By Rick Peterson, General Manager  
Tollefson Publishing

starting at 5:30 p.m.

Friday is Senior Day with a 2:30 p.m. program featuring music by Bruce Dysthe. I get in line again to chow down at the Rock County Pork Producers pork feed starting at 5:30 p.m. The Friday night grandstand attraction is XTREME BULL riding and Mutton busting.

Saturday is Kids Day at the fair with lots of special afternoon activities. It's the final day of the fair, but

just as busy — if not the busiest day of the fair. The grandstand features the Enduro race starting at 7 p.m.

In addition to all of that, each day includes many other events such as bingo, wood carving, blacksmith, petting zoo, toy farm show, Kettle Corn, face-painting and Xtreme balls, to name a few.

Of course the midway will be up and running each day of the fair. New this year is Wristband Day on

Thursday. Purchasing a wristband for \$20 entitles you to take as many rides as you want from 5-9 p.m.

Changing gears for a moment, have you noticed the new landscaping at the Take 16 Brewing Company? One word sums it up for me. "Wow."

So that makes it three great entrances to Luverne out of four.

You have the Sanford entrance from the north, the park, the new bridge and now Take 16 as you come into town from the east.

From the south you have Rotary Park and the electronic sign and at Main Street and Highway 75 you have the nicely done "four corners" with the flag park anchoring that intersection.

Next we can maybe work on the less-than-spectacular County Road 4 entrance on the west edge of Luverne ... No, I am not complaining. What I just did was plant a seed.

VOICE OF OUR READERS

To the Editor:

The progressives would like to open our borders to everyone who would like to come on board. Some would even get rid of immigration agents themselves. Part of the reason they say we need to do this is the fact that we need more workers.

I find this more than curious. This is the same outfit that literally throws hundreds of thousands of little new baby Americans out with the medical waste dumpster every year. "Made in America" must not mean much to these snoots!

All in all, I'd say these folks are a couple of pearls short of a full oyster.

Bill Frakes  
Luverne

E-mail: editor@star-herald.com Web site: star-herald.com  
Phone: 507-283-2333 Fax: 507-283-2335

Published Thursdays by Tollefson Enterprises, POSTMASTER:  
Send address changes to 117 West Main, P.O. Box 837, Luverne,  
MN 56156. Periodicals postage paid at Luverne, Permit #33 and at  
additional mailing offices.

General manager: Rick Peterson

Office manager: Deb Lusty

Circulation manager: Jennifer Kor

Advertising: Chantel Connell

Production manager: Abbe Kolar

Production: Heather Johnson

News staff:

Lori Sorenson, editor

Mavis Fodness, reporter

John Rittenhouse, sports editor

Esther Frakes, copy editor

Rock County  
STAR HERALD  
Rock County's newspaper since 1873

(ISSN 0889-888X)

SUBSCRIPTION RATES

\$72 per year in Rock County; \$89 per year all other areas. Single copies \$1.25

Entire contents copyrighted by  
Tollefson Publishing Roger Tollefson, publisher

The *Star Herald* encourages letters to the editor expressing the opinions of readers and intends to print all letters. Letters not meeting the guidelines will not be printed. The *Star Herald* will verify the authenticity of all letters. Letters must have the name of the writer, a signature and address.

Unsigned letters will not be considered. The *Star Herald* will edit for grammar, spelling and clarity. Any letters containing offensive language, libelous or slanderous material, or misleading or false information will be rewritten before being published. The *Star Herald* will not publish letters written with the sole intent to advertise or serve as a thank-you. Letters with more than 300 words may be edited. The deadline for letters is Monday 10 a.m. They may be delivered or mailed to the editor, *Rock County Star Herald*, P.O. Box 837, 117 W. Main St., Luverne, Minn. 56156.



## ON THE RECORD

### Dispatch report

**July 6**  
•Complainant on Pine Drive requested welfare check.  
•Complainant at I-90, mile marker 9 reported person lying on shoulder.  
•Harassing communication was reported at location on North Cedar Street.  
•Complainant reported vehicle speeding on 101<sup>st</sup> Street.  
•Complainant on West Main Street reported vandalism.  
•Complainant on West Luverne Street reported little to no water pressure.  
•Complainant at 180<sup>th</sup> Avenue in Hardwick reported suspicious vehicles.  
**July 7**  
•Deputy responded to a vehicle unlock.  
•Extra patrol was requested at North Lindale Street.  
•Business on South Kniss Avenue reported gas drive-off.  
•Complainant in rural Beaver Creek reported garbage being dumped at location.  
•Order for protection violation was reported on West Warren Street.  
**July 8**  
•Complainant on I-90 at mile marker 22 reported a driving complaint.  
•Complainant on North Estey Street reported a disturbance.  
•Complainant on S. Kniss Avenue reported a theft.  
•Complainant reported an abandoned bike at South East Park and West Warren streets.  
•Complainant on West Warren Street reported a child playing outside alone.  
•Complainant on South Freeman Street reported fireworks.  
•Deputy reported open door on East Fairway Drive.  
**July 9**  
•Complainant turned in some found keys. Three keys with a Spader's RV keychain.  
•Complainant reported the road will be closed today for a culvert repair on 30<sup>th</sup> Avenue from 111<sup>th</sup> to 121<sup>st</sup> streets.  
•Complainant on South Kniss reported a gas drive-off.  
**July 10**  
•Business on South Kniss reported a counterfeit \$20 bill.  
•Complainant in rural Jasper requested a check at location.  
•Complainant reported a scam.  
•Complainant on West Hatting Street reported some tires were taken off a car.  
•Complainant turned in a license plate left at the car wash.  
•Complainant in Steen reported trespassing.  
•Complainant reported tire in roadway at Highway 23 and 221<sup>st</sup> Street intersection.  
•Complainant reported suspicious vehicle on 70<sup>th</sup> Avenue.  
•A sinkhole near Blue Mounds on County Road 9 was reported and blocked off with flashers.  
•Complainant in Hardwick Campgrounds reported a disturbance.  
**July 11**  
•Complainant at South Kniss Avenue location reported suspicious individual.  
•Complainant on North Freeman Avenue reported a commercial burglary alarm.  
•A backpack was found at West Mead Court.  
•Sheriff supervised property exchange in rural Beaver Creek.  
•Complainant on 70<sup>th</sup> Avenue reported suspicious vehicle driving around the area and parking in people's driveways.  
•Complainant on South Kniss Avenue requested a deputy pick up subject for an evaluation.  
•Report of underaged kids vaping on Edgehill.  
•Records request from outside agency.  
•Complainant in Steen reported a break-in.  
•Complainant in Hills reported someone shooting a BB gun.  
•Complainant on West Luverne Street reported egging.  
**July 12**  
•Complainant on East Main Street reported alarm.  
•A semitrailer fire was reported at 191<sup>st</sup> Street and Highway 75.  
•Complainant reported the vehicle did not stop when a traffic stop was initiated.  
•Deputy escorted probation officer for home visit.  
•A severe thunderstorm was reported.  
•Report of a man sitting in vehicle at North Lindale Street.  
•An assault was reported at East Main Street.  
•A wallet was found after Hot Dog Night festivities in downtown Luverne.  
•Severe weather was reported in Luverne.  
•A search warrant on South Estey Street.  
**July 13**  
•Complainant reported a fire alarm on Roundwind Road.  
In addition officers also responded to 4 motor vehicle accidents, 1 deer accident, 1 transport, 8 escorts, 25 ambulance runs, 9 animal complaints, 7 burn permits, 2 paper services, 2 drug court tests, 1 permit to purchase/carry request, 20 traffic stops, 3 abandon 911 calls 1 fingerprint request and 1 background check.



Lori Sorenson photo/0719 cleveringa twin homes

The most recent Cleveringa Construction twin homes are under construction on Roundwind Road east of the pool and fitness center. Those four twin homes will be completed over the next three years, the first one on track for completion this fall.

## Housing development in Luverne/continued from page 1A

Barck Avenue includes two twin homes and one triplex that were built on formerly blighted properties.

Those three lots were valued at \$68,700, generating a total of \$800 in property taxes. Now the new structures, valued at \$1,708,400 are owner-occupied and are generating approximately \$20,310 in property taxes annually.

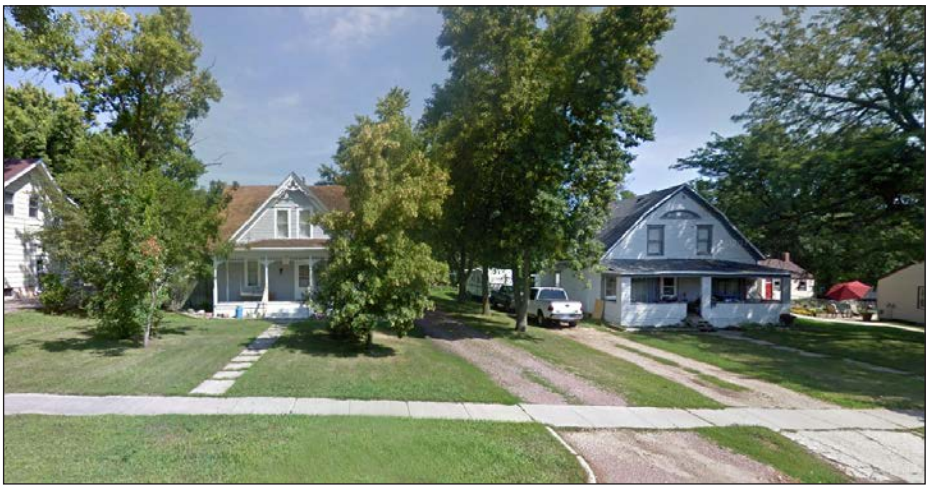
Mayor Pat Baustian said the most recent development on the other end of Barck Avenue is the intended outcome of Luverne's ongoing efforts to reduce blight.

"We had demolition of two houses, and now to know that we're gaining two new houses is what we're trying to do with demolition and infill," Baustian said.

The West Barck properties had been generating \$458 in taxes annually, and the new lots will likely generate an estimated \$10,000, in addition to easing Luverne's tight housing market.

These lots originally had substandard housing on them and the city bought them for demolition and residential redevelopment.

The city paid Randall and Kristy Goembel \$22,500 for the 104 West Barck



The West Barck properties had been generating \$458 in taxes annually, and the new lots will likely generate an estimated \$10,000, in addition to easing Luverne's tight housing market. (Google images photo)

property in October 2015.

In June 2017 Matthew and Toni Taubert sold their 108 West Barck property to the city for \$50,000.

The West Barck rentals are a new venture for Cleveringa, who has built nearly a dozen multifamily structures in Luverne over the past 10 years, includ-

ing eight on Blue Ridge Circle off North Blue Mound Avenue.

The most recent ones are on Roundwind Road east of the pool and fitness center.

Those four twin homes will be completed over the next three years, the first one on track for completion this fall.

## Corner cleanup

Crews wrap up work at the corner of Highway 75 and West Dodge Street Friday, July 13, after the intersection was torn up for more than a week.

Workers repaired a water main and moved a fire hydrant to the west. The water main problem had been discovered during the school year, but the city decided to fix it after school was out in order to avoid traffic congestion.

The hydrant was moved in order to prevent collisions with trucks turning the corner to and from Highway 75.



## Papik picks of the week...



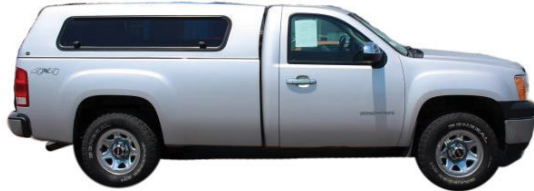
2013 Chevrolet Camaro  
20K • Stock #143519N  
\$26,990



2008 Chevrolet Silverado  
163K • Stock #102363N  
\$11,990



2008 Ford F-150  
185K • Stock #67803U  
\$5,990



2010 GMC Sierra  
169K • Stock #180026U  
\$9,990

283-9171

PAPIK.COM

I-90 Luverne, MN 56156





CELEBRATIONS

Open houses

**Harry and Marilyn Flanagan** will celebrate their 50<sup>th</sup> wedding anniversary with an open house from 2 to 4:30 p.m., program at 3 p.m., Saturday, July 21, at the Jasper Memorial Hall in Jasper.

Card showers

**Missy Merrill** will celebrate her 50<sup>th</sup> birthday on Wednesday, July 25. Greetings may be sent to her at 120 W. Warren Street, Luverne, MN 56156.

MENU

**Monday, July 23:** Swiss steak, mashed potatoes, corn, bread, pineapple.

Program: Pinochle.

**Tuesday, July 24:** Roast turkey with gravy, mashed potatoes, carrots, cranberry garnish, bread, fruit shortcake.

Half-price day sponsored by Exchange State Bank.

**Wednesday, July 25:** Mandarin chicken salad, fresh fruit, cucumber salad, muffin.

**Thursday, July 26:** Porkchop with gravy, mashed potatoes, green bean bake, dinner roll, fruit crisp.

Half-price day. 50's Day.

**Friday, July 27:** Lasagna, country blend vegetables, lettuce salad with dressing, garlic bread, bar.

Half-price day.

*Senior Dining offers well-balanced and affordable meals in a community atmosphere.*

*Gift certificates are available at the meal site or online at [www.lssmn.org/nutrition](http://www.lssmn.org/nutrition).*

*Call Lauree Teunissen at 283-9846 to make dining reservations or for home-delivered meals.*



Submitted photo  
Luverne High School students (from left) Sage Ver Steeg, Jacinda Hustoft, Zoe DeBates, Shane Berning and Lindsey Roemeling attended the National Leadership Conference recently in Atlanta, Georgia, and presented at the conference's STAR or Student Taking Action with Recognition event.

Students bring medals back from national event

By Mavis Fodness

Five Luverne High School students earned national recognition at the FCCLA National Leadership Conference June 28-July 2 in Atlanta, Georgia.

Zoe DeBates, Jacinda Hustoft, Lindsey Roemeling, Sage Ver Steeg and Shane Berning participated in one of 30 family and consumer science-related competitive events.

They competed against more than 4,500 students in the Students Taking Action with Recognition (STAR) event.

Ver Steeg received a gold rating

for her advocacy project titled "Invisible Illnesses."

She developed a website that offers support and care kits for those affected by an illness and educates those who are not.

Roemeling and Hustoft also earned a gold rating for their chapter in review display and presentation.

The duo outlined the group's membership growth from 12 to more than 50 students and how the club officers kept members engaged.

Berning and DeBates received a bronze for their hospitality and tourism project.

They presented their "Luverne Getaway" idea, an on-line store where local residents and visitors can redeem coupons for a night out, family day excursion or a home-away-from-home trip in Luverne.

The conference provided Luverne students opportunities to come together with other FCCLA members for energizing learning while listening to inspiring speakers, expanding leadership skills, sharpening talents and exploring career pathways.

Theme for this year's conference was "Inspired by FCCLA."

The theme inspired students to make the right choices and commit themselves to making a positive impact within their families, schools, FCCLA and communities.

FCCLA or Family, Career and Community Leaders of America, helps young men and women become leaders and address important personal, family, work and societal issues through family and consumer sciences education.

REMEMBER WHEN

10 years ago (2008)

•Removal of the low-head dam on the Rock River near Luverne City Park will be delayed until next year in order to study its effect on city wells.

The dam will be replaced by a system of nine rock weirs that will be installed starting north of the Main Street bridge and continue past the railroad bridge.

The weirs will control the grade of the river, so the water level doesn't drop and affect the city's wells.

If the river level drops more than a few feet, it would affect the adjacent shallow aquifer that feeds the city's water supply.

Two surveying sources have confirmed the project won't affect the river level by more than 12 inches, but the city and county want to err on the side of caution.

25 years ago (1993)

•Subway and Amoco are open for business in Luverne.

Subway manager Mary Sammons said she has been interested in Subway ever since going to college in Sioux Falls and eating at Subway there. She traveled to Wayne, Neb., for training, which included learning how to make all the combinations of sandwiches and completing book work. Subway's 12 employees trained for two days before opening on July 7.

"When you get busy, all you can do is make those sandwiches," Sammons said. "That's the best kind of experience."

50 years ago (1968)

•Unless an operator is obtained this week, one of Luverne's oldest established service stations will be closed after Saturday night.

Wilbert Eichmann, who has operated Willie's Mobil at the corner of Main and Estey for the past four years, will hold an auction sale starting at 6 p.m. tonight (Thursday) to dispose of his equipment and inventory. The station will remain open for the sale of gasoline only through Saturday.

On Monday, he will become the Chevrolet dealer at Salem, S.D., and his family will move there to join him as soon as their home in Luverne has been sold.

Where the bus depot will be relocated still had not been determined yesterday. Mr. Eichmann has been the local agent for bus service, and all buses coming into Luverne have made their regular stops there. It was expected, Eichmann said, that the decision would be made before the end of the week.

75 years ago (1943)

•Two important meetings are planned for the coming week,

Leonard A. Arp, war board chairman announced.

A meeting of the new meat committee and the war board will be held in the AAA offices at 2 p.m. next Thursday, July 22, and that evening, there will be a public meeting in the court house to acquaint the public with the plan under which the meat committee will function and to clear up general inquiries concerning the slaughter program.

100 years ago (1918)

•The Home Automobile Co., the latter part of last week received its first "Fordson," the new farm tractor being turned out by Henry Ford and Son.

Thirteen of these tractors have been assigned to the Home Company, for Rock county, with the understanding that they are to be sold to farmers at cost, through arrangement with the United States government and federal food administration for Minnesota, as an aid in increasing food production.

Up to Wednesday the Home Automobile Co. had booked orders for eight of these tractors, which leaves only five more to be sold at cost to users.

After this allotment had been disposed of, the selling price of the tractors will be increased so as to include the dealer's usual margin of profit.

1952: Fifty dollar cash prize for largest corn ear

The following appeared in the Rock County Star Herald on October 23, 1952.

Area's Biggest Ears of Corn And Largest Eggs Will Vie In C and C Contest Friday

Merchants To Offer Host Of Special Values

The largest ears of corn and the largest hen's eggs raised in the Luverne trade area will compete for \$50 in cash prizes in a special "Luverne Day" contest sponsored by the Luverne Civic and Commerce association.

The contest is one of the feature attractions during "Luverne Days" which are being noted today, Friday and Saturday, by Luverne merchants.

Merchants Offer Special Values

A glance through the "Luverne Days" section of the Star-Herald this week is all that is needed as proof that the business firms of the city have gone all out to offer bargains in almost every type of merchandise. Early shopping, especially today and tomorrow,



BITS BY BETTY

By Betty Mann, president Rock County Historical Society

row, however will offer the best selection of these values, according to U. J. Lodermeier, chairman of the C and C retailers committee.

With corn picking operations completed or nearly completed on many farms in the area, there shouldn't be any difficulty in finding big ears of corn to enter into the contest. It was pointed out that the ears will be judged on size only and not on beauty or conformity as is generally the case in corn shows.

Prizes are \$15 and \$10

First prize is \$15 in cash, and second prize is \$10. The longest ear will be awarded first prize and the second longest will be awarded the second prize. In cases of tie, the longest ears with the largest circumference will be declared the winners.

The prize winning eggs will be determined by their weight. Prizes for eggs are also \$15 and \$10.

Entries may be made any time between 10 a.m. and 5:30 p.m. Friday at Smith's Used Furniture store on Main street, and they will be on display for the public there all day Saturday and Saturday night. Owners need not return for their ears of corn or eggs, as those not called for will be given by the C and C to some worthy organization or institution. Prizes will be awarded to the winners Saturday night.

Donations to the Rock County Historical Society can be sent to the Rock County Historical Society, 312 E. Main Street, Luverne, MN 56156. Mann welcomes correspondence sent to [mannmade@iw.net](mailto:mannmade@iw.net).



Mavis Fodness photo/0712 Purple Heart County

'Purple Heart County' proclamation signed

Rock County Commissioners signed a proclamation Tuesday morning, July 10, designating Rock County as a Purple Heart County to honor local veterans who were wounded or killed while protecting the freedoms enjoyed by all Americans. "The Purple Heart is not an earned award but a reward for shedding blood," said Ken Teunissen (right) with the Military Order of The Purple Heart Chapter 5355 in Sioux Falls, South Dakota. Teunissen, along with chapter member Buck Underwood of Luverne (left), witnessed commissioner chair Sherri Thompson sign the symbolic proclamation. Luverne was proclaimed a Purple Heart City in 2016.





Submitted photo/0719 grace youth trip

## ‘This changes everything’

More than 30 teenage members of Grace Lutheran Church traveled with their adult mentors to Houston, Texas, June 26 through July 1 for the National Youth Gathering of the Evangelical Lutheran Church in America. Pictured are (front, from left) Jennifer Bakken, Genna Rolfs, Sadie Reisdorfer, Kaitlyn Anderson, Mackenzie Petersen, Greta Ahrendt, Solveig Tofteland, (second row) Jill Wagner, Carrie Oye, Roz Oye, Sophie Holmberg, Samantha Wieneke, Madee Schmuck, Kristin Rud, Paige Sandbulte, Emilie Bartels, Carrie Overgaard, (third row) Nicole Hoogland, Annie Hilding, Jadynd Anderson, Courtney Wendland, Rose Baerenwold, Luke Thorson, Jessica Anderson, Julia Ferguson, Tucker Wieneke, Chris Rosin, Kyle Ferguson, Eli Radtke, Amy Petersen, (back) Chad Overgaard, Eric Thorson, Ben Wagner, Andrew Wagner, Gunnar Oldre, Nathan Overgaard, Hans Bakken, Stephen Hilding and Connor Overgaard. Each year the event attracts over 30,000 youth for five days of worship and service. This year the theme was “This Changes Everything,” based on the Bible verse, Ephesians 2:8.

## Now is the time to make daily visits to the garden

I trust that the planters you put together this spring are giving you the color you had hoped for.

If you have a plant in that combination that has assumed a “take over” attitude, don’t be afraid to give it some discipline ... with a pruning shears! Also, be sure to continue feeding to keep that energy and color coming.

Removing the faded flowers (dead-heading) is another way to promote more flowering and maintain the beauty of the planter. Dead-heading is more than just removing the spent petals — it means removing the stem holding the flower thereby also removing the seed pod.

Every plant’s purpose is to produce seed. For an annual flower, once that is accomplished, the plant will often quit blooming and start to decline. With modern introductions of old familiar flowers, that seed-producing element has been bred out so they just keep blooming until the end of the season.

If you have rose bushes, this is when you want to spray to prevent black spot. That fungal disease starts out as a black spot, usually on the lower leaves and then the leaf turns yellow and falls off. It quickly progresses up into the



## KNOW IT AND GROW IT

By George Bonnema,  
Luverne Horticulturalist

canopy of the plant and can cause almost complete defoliation, destroying the beauty of the plant and weakening it for survival through the winter.

Read the label on your fungicide spray to verify its effectiveness for black spot control.

If you have cucumber vines in your garden, you want to check for “cukes” every day or you will get monster-sized pickles happening overnight!

*Bonnema is a gardening enthusiast and former greenhouse owner. He can be reached at [flowersgb@iwi.net](mailto:flowersgb@iwi.net).*

## SCHOOL NEWS

### Luverne student graduates from St. Olaf

Jonathon Vajgrt, son of Terry and Michelle Vajgrt, Luverne, graduated magna cum laude with a degree in chemistry from St. Olaf College, Northfield, at the Spring 2018 commencement ceremony.

### Thier earns degree from Clarke

Austyn Thier, Adrian, received a Doctor of Physical Therapy degree from Clarke University, Dubuque, Iowa, at the spring commencement ceremony May 19.

### Local students graduate from U of Sioux Falls

Christine Bickford and Heather Doerr, both of Luverne, graduated Sunday, May 20, from the University of Sioux Falls.

Bickford earned a Master of Business Administration in business administration, and Doerr received a Bachelor of Arts in elementary education.

## COMMUNITY EDUCATION

**Community Ed contact info: [C.Arends@isd2184.net](mailto:C.Arends@isd2184.net) or 507-283-4724.**

**Summer Community Ed office is closed July 16-27.**

The Luverne Community Education summer brochure is online at the Luverne School website.

**Art Camp** to study cartoons, comics and pop art will be three sessions on July 17-19 at Coffey Contemporary Arts. Fee for children who attended grades K-5 during the past year is \$30.

**Youth Firearms Trainers** are needed here in the Luverne area. If you are willing to become a trainer, please register for a July 30 class at the Minnesota DNR website. If you wish to carpool, call Community Education by July 12 to arrange transportation.

**Nature Explore Outdoor Classroom** is open to families, daycares and visitors to play and learn. The classroom, located on the southwest side of the Luverne school.

## PEOPLE IN THE NEWS

### Local insurance professionals recognized by association

Several local insurance professionals were recently recognized for excellence by the Insurance Professionals of Greater Sioux Falls.

Samantha DeBates, Senior Advantage Account Underwriter of Continental Western Group of Luverne, was named Insurance Professional of the Year for excellence in the insurance industry for 10 years or more.

The award considers participation in association activities, involvement in the insurance industry, education programs, industry experience, current career position and activities in the community.

Krista Ahrendt, Commercial Underwriter of Continental Western Group of Luverne, was named Professional Underwriter of the Year.

This award recognizes an underwriter who has demonstrated superior knowledge of the field, experienced professional ad-

vancement through educational pursuits, demonstrated leadership and is an active participant in International Association of Insurance Professionals activities.

Natilee Woodley, Senior Business Support Specialist of Continental Western Group, Luverne, was recognized as the president of the Insurance Professionals of Greater Sioux Falls association for the past year.

Natilee was recognized for her leadership qualities with effective communication to all members and helping others to be successful in the organization.

The individuals were honored at the association’s 2018 banquet on May 15 in Sioux Falls.

The International Association of Insurance Professionals is best known for providing insurance education, skills enhancement, and leadership development to its members.

### Luverne grad featured in business publication

A 2003 Luverne High School graduate was featured in a recent Finance and Commerce story under their regular column, “Rising Young Professionals.”

Gregg Fuerstenberg, son of Barb Gust, is vice president of business and economic incentives at the Minneapolis office of JLL, a global real estate and investment management company.

An attorney and accountant, he has degrees from Mitchell Hamline School of Law and Gustavus Adolphus College.

He has also worked as an auditor for a regional public accounting firm.

For a recent JLL project, Fuerstenberg worked with a team to secure state and local support for Digi-Key, the Thief River Falls-based electronic component distribution company that’s building a 1 million-square-foot distribution facility.

The project represents an investment of more than \$200

million and is expected to bring 1,000 new jobs over a decade.

“To be able to partner with all units of government and [bring] such a tremendous asset to our state and that community was a fantastic experience,” Fuerstenberg told Finance and Commerce in the June 29 edition.

The Minnesota publication is an independent daily newspaper dedicated to business reporting.



## DEATH NOTICE

### Ella Barber

Ella A. Barber, 92, Luverne, formerly of Granite Falls, died Wednesday, July 11, 2018, at the Good Samaritan Society – Mary Jane Brown Home in Luverne.

Ella is the mother of Rick Barber, Luverne.

A private family memorial service will take place at a later date.

Dingmann Funeral Home & Cremation Services, in Luverne, is assisting the family with arrangements.

(0719 DN)

## OBITUARIES

### William DeBates

William Joseph “Bill” DeBates, 82, Luverne, died Sunday, July 15, 2018, at the Royal C. Johnson Veterans Hospital in Sioux Falls, South Dakota.

A funeral Mass will be at 10:30 a.m. Saturday, July 21, at St. Catherine Catholic Church in Luverne. Burial will be in the St.

Mary Cemetery in Worthington at a later date. Visitation will be Friday, July 20, from 4-7 p.m. with parish prayers at 7 p.m. at the Dingmann Funeral Home in Luverne. Visitation will also be one hour prior to the service at the church on Saturday.

William DeBates was born Dec. 18, 1935, to Roy and Louise (Heitman) DeBates in Jasper. He served his country in the United States Army from Jan. 26, 1955, to Jan. 2, 1958.

Bill married Marilyn Gerber on Aug. 13, 1960, at St. Mary Catholic Church in Worthington. The couple lived in Mankato while Bill finished his education at Mankato State University. They then moved to Hardwick where Bill taught elementary school and later became principal. In 1971 he purchased Bill’s Clover Farm in Hardwick. The family moved to Aberdeen, South Dakota, in 1976, and Bill worked at Nash Finch Company. In 1979 they moved to Luverne where he

worked for M & JR Hakes Inc.

In 1983 they moved to Laurens, Iowa. In 1989 the family returned to Luverne where Bill worked at Nash Finch Company in Sioux Falls, South Dakota, before retiring in 2000.

He was a member of St. Catherine Catholic Church in

Luverne, the Hardwick American Legion, and the Minnesota DFL. Bill served as mayor of Hardwick and was elected to the Luverne School Board for four terms. He enjoyed fishing, fantasy football, playing pinocle and watching the Minnesota Twins and Vikings.

Bill is survived by his wife, Marilyn DeBates, Luverne; six children, Laura DeBates, Sioux Falls, Bill Jr. (Janine) DeBates, Terri (Dave) Siebenahler, Mike (Samantha) DeBates and Patti DeBates, all of Luverne, and Amy (Brian) Dykstra, Worthington; 21 grandchildren; five great-grandchildren; a sister, Elizabeth Mowbray, Milwaukee, Wisconsin; a brother, Vince (Patricia) DeBates, Sioux Falls; and many nieces and nephews.

He was preceded in death by his parents; two brothers, Roy and Lawrence DeBates; and a sister, Mary Matthiesen.

Arrangements were provided by Dingmann Funeral Home of Luverne, [www.dingmannandsons.com](http://www.dingmannandsons.com).

(0719 F)

### Donna Gertz

Donna Mae Gertz, 91, West Fargo, North Dakota, died Tuesday, July 3, 2018.

A funeral service was Friday, July 6, at Community Presbyterian Church in West Fargo. Burial was at Maplewood Cemetery in Luverne.

Donna Brooks was born Jan. 19, 1927, to Lyman and Anna Brooks in Luverne. She grew up on a farm in southern Minnesota with nine siblings.

In September of 1947, Donna married Robert Gertz. They made their home in Magnolia before moving to West Fargo in 1957. Donna was active in her church where she perfected floral arrangements for the worship service for over 40 years as well as singing in the choir. Donna loved working in the yard and enjoyed making jams with home-grown produce. Donna was widowed at an early age when Robert died in a truck accident in 1969.

Donna was a den mother, served in the VFW Auxiliary, volunteered at the VA, Salvation Army and Humane Society. She was part of the maintenance staff at West Acres Shopping Center for 20 years. Donna loved dancing, playing pool and baking. She also loved playing cards.

Donna is survived by five children, Larry (Stephanie) Gertz, Bigfork, Montana, Stephen (Linda) Gertz, Minot, North Dakota, Susan Gertz, Mooreton, North Dakota, Debora Olson, West Fargo, and Thomas (Pamela) Gertz, West Fargo; 10 grandchildren; four great-grandchildren; a brother, Orville Brooks, Burnsville; and a sister, Barbara Hinz, Luverne.

Donna was preceded in death by her husband, Robert Gertz, and seven siblings.

Arrangements were provided by West Funeral Home and Life Tribute Center, [www.westfuneralhome.com](http://www.westfuneralhome.com)

(0719 F)

**WINDOW SALE!!!**

**Call now to take advantage of our 4th of July Sale!**

- Free Installation
- Lifetime Warranty
- Financing Available: 12 MONTHS SAME AS CASH

\*White vinyl, double hung, double pane windows; four windows minimum; up to 101 sq. ft. Standard installation includes removal of wood windows without capping or Low E.

**Family Owned and Operated**  
**CUSTOM WINDOWS • 712-720-0759**





## Phase 2 Loop continues/from 1A

Construction crews have concrete poured from Highway 75 to the west along Gabrielson Road.

Phase 3 is still in the design phase, but ultimately the Loop will end up back at East Main Street near the City Park and at the start of the Blue Mound Trail on the former Casey's property.

### Background

The six-mile \$2 million paved trail connects the city to the seven-mile Blue Mound Trail that goes over and around the park, with an option to branch off to the top of the 90-foot cliffline for a panoramic view of Luverne.

●**Phase 1** in 2016 cost nearly \$700,000. That includes \$100,000 for improvements at The Lake site, \$20,000 for signs to direct people to the trail, and \$447,378 for work on the trail itself.

Some of the 2016 trail costs were offset by a \$150,000 local trail connection grant.

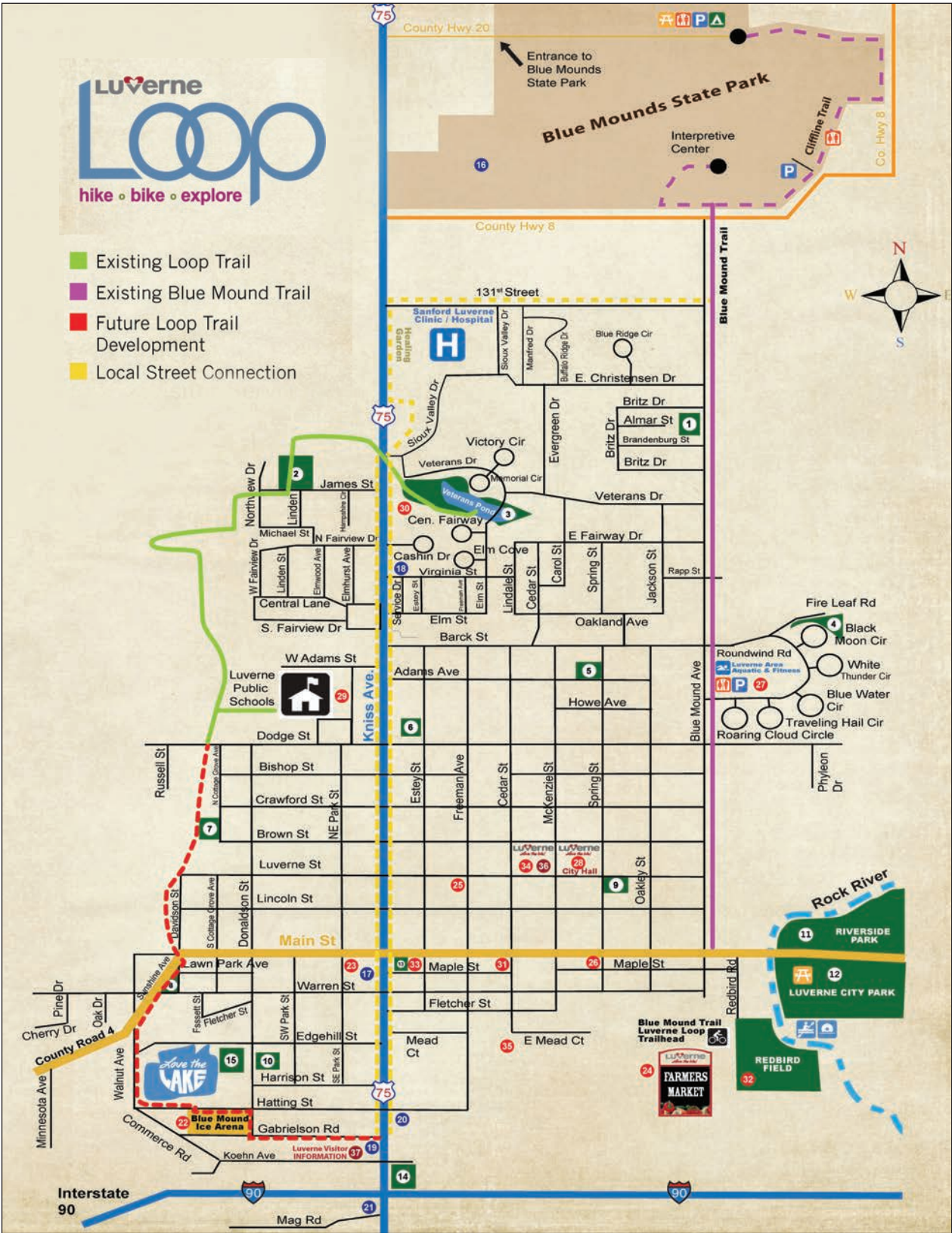
●**Phase 2** was bid by Thorstad Companies at \$747,569, but a \$598,056 state grant will bring the local investment down to less than \$150,000. Phase 2 includes parking at The Lake for \$60,000 and way-finding signs for \$20,000.

●**Phase 3** plans are still in the design phase.

A Luverne Loop Capital Project Fund has been set up to pay for capital costs associated with the trail, and that five-year capital plan is reviewed and adjusted annually.

Other possible Loop expenses include \$50,000 for a shelter at The Lake, \$65,000 for landscaping (possibly a berm) at The Lake, \$60,000 for playground equipment along the trail, and \$25,000 for way-finding signs.

Expenses associated with a trailhead, possibly at Redbird Field, include \$90,000 for a sidewalk, \$100,000 for a restroom, \$65,000 for trailhead shelter (with electrical wiring).



## Six local airmen deploy overseas

By Mavis Fodness

Six Luverne residents are among the airmen deployed with the South Dakota Air National Guard 114th Fighter Wing out of Sioux Falls on Wednesday.

Jaidyn Elbers, Joe Baustian, Makayla Sterrett, Alec Hoven, Abby Pierce and Jack Baustian were among the airmen and aircraft deployed for Southeast Asia this week in support of an Air Expeditionary Force rotation.

Their parents are Todd and Diane Elbers, Pat and Katie Baustian, Tom and Melissa Sterrett, Travis and Stephanie Pierce and Richard and Jessy Hoven.

According to support officer Capt. Jessica Bak, the U.S. Air Force routinely deploys fighter aircraft units to the region to provide combatant commanders with the capabilities needed to maintain a deterrent against threats to regional security and stability.

The 114th Fighter Wing has previously deployed to various locations in the South Asia region since Sept. 11, 2001.

Air National Guard officials have declined to say how many personnel are deploying, exact location of the deployment, specific equipment involved or length of the mission.

Upon return from deployment a welcome home ceremony for airmen and families is planned.

**NOW HIRING (FULL-TIME) SERVICE TECHNICIANS FOR JAYCOX IMPLEMENT AND JAYCOX TRUCK AND TRAILER**

We are looking for talented, self-motivated individuals, with the desire to learn new and innovative ways to perform required tasks to fill our Full Time-Service Tech positions. Must have experience as a mechanic, or the equivalent degree. Able to handle multiple projects, a good working knowledge of using a computer as a service tool, and excellent communication skills.

Pay/Benefits include:

- Hourly wages
- Proficiency Bonus Program
- Paid Holidays
- PTO and Sick Leave
- Paid Health Insurance
- IRA
- Uniforms

Please send replies and resumes: Mark Ommen, Store Manager: mark.ommen@jaycoximplement.com or call 507-220-1326

**JAYCOX TRUCK & TRAILER SERVICE**

**LUVERNE, MN 507-449-6130**

## Beating the heat flamingo style

Pink flamingos have long been a familiar lawn ornament, and an oversized plastic flamingo resides in the backyard of Jane and Ron Cote on Harrison Street in Luverne.

The blow-up pool is a favorite with day-care children Raven Hawkins (below) and Alex Gangstad (right).



Mavis Fodness photos/0719 Flamingo Pool

Swimming was an especially popular activity Wednesday afternoon, July 11, the first of two days of heat advisories. A cold front Thursday evening, July 12, lowered the heat index levels below 100 degrees.

Expert health care  
**FOR ALL AGES.**

Stephen Chesley, MD; Judy Chesley, MD; Zachary Nolz, MD; Family Medicine

Make a personal, lifelong connection with a primary care provider at Sanford Luverne. Our team specializes in preventive care as well as the diagnosis and management of chronic conditions.

Call (507) 283-4476 or (888) 283-4476 to schedule an appointment.

Timothy Ceynowa, MD  
Family Medicine

Joshua Crabtree, MD  
Family Medicine

Diane Kennedy, MD  
Family Medicine

Jennifer Thone, MD  
Family Medicine

Jonathan Pap, CNP  
Family Medicine

**SANFORD**  
Luverne

**YOU ARE INVITED TO AN**

**educational workshop**

**REVOLUTIONIZING AWARENESS**

helping humanity, making choices,  
more so through awareness than ignorance.

This will have a great economic impact on you and the county.

**GUEST SPEAKERS**    July 22 • 1:00 - 5:00 p.m.

**Loren Forrest and Rodney James**  
followed by Barn BBQ

**July 23 • 9:30 a.m. - 5:00 p.m.**

**Dave Smidt and Mr. & Mrs. M.**

**at Grand Prairie Events, Luverne**

**PRE-REGISTER BY JULY 20 \$125 (covers both days)**

Send your check to Loren Forrest, 1253 121st St. Luverne, MN 56156

Sum•mer /n./  
- The hotter half of the year.  
Beat the heat with **Star-Herald.com**



# Sudengas rally to win M-G title

*Brothers shoot four-over-par Saturday*

**By John Rittenhouse**  
The 37<sup>th</sup> version of the Luverne Country Club's Member-Guest Tournament featured a sensational comeback by the winning team.

Member Jeremy Sudenga and his guest, Jason Sudenga (Sioux Falls), were fighting for respectability when the first day of the 36-hole tournament was complete.

The Sudenga brothers earned their respect on Saturday when they shot a combined four-over-par for the final 18 holes to win what was a tightly contested tournament.

The Sudengas compiled 14 and ½ quota points to edge out a pair of teams by one point and the other squads in the 38-team field.

Jeremy and Jason Sudenga did win the M-G championship back in 2004, but their prospects of claiming the title in 2018 didn't appear to be promising when Friday's opening round was complete.

After a four-hour delay to start the tournament due to heavy rain the night before, the eventual champs produced three points over 18 holes to earn a share of 16<sup>th</sup> place in the Day 1 team standings.

A total of 22 teams finished the opening round with positive points led by member Tim Connell and his guest, Pat Connell (Edina).

The Connell combination



John Rittenhouse photo/0719 mg champs  
Member Jeremy Sudenga (left) and his guest, Jason Sudenga, rallied on the second day of play to win the annual Member-Guest Tournament at the Luverne Country Club over the weekend.

registered 12 points on Friday to lead the field.

Defending champions Mike Haakenson and his guest, Tyler Kashdan (Minneapolis), produced 10 points to trail the Connell team by two points.

Member Dan Kern and Keith Rubis (Jackson), member Dan Kindt and Dave Kindt (Volga, South Dakota,) and member Spencer Sells and David Beyenhof (Maple Grove) shared third place with nine

points when the first round was complete.

Day 2 belonged to the Sudengas, who played outstanding golf both individually and collectively.

After posting a 73 on Friday, Jason Sudenga fired a par-72 on Saturday to wrap up the tournament's low gross championship (73-72-145).

Along with winning the M-G Tournament with his brother in 2004, Jason Sudenga

won the 1999 championship playing with member Cory Norman.

Jeremy Sudenga played well in his own right. After registering an 85 Friday, Jeremy fired a four-over-par 76 during the final day of play.

With everything clicking, the brothers produced 11 ½ points on Saturday to finish the event with 14 ½ points.

**Rally/continued on page 2B**

# Britz enjoys experience at golf tournament

**By John Rittenhouse**

The Chicago Golf Club is a challenging course that demands golfers have complete control of their game.

Luverne's Jerilyn Britz struggled in one aspect of her game, and it worked against her during the first U.S. Senior Open staged Thursday through Sunday at the venue in Wheaton, Illinois.

Britz, one of 120 players forming the field, became one of 65 players who missed the cut to play in the tournament's third and fourth rounds.

The 1979 U.S. Open champion posted scores of 94 and 90 on Thursday and Friday respectively for a combined 38-over-par, 184-stroke tally.

"I just didn't hit my irons well enough to score well on this course," Britz said Sunday night.

"I drove the ball well and my putting and chipping was fine. You have to be able to hit high, soft approach shots to stick the ball on the greens there. A lot of my shots hit the green, but they rolled off the fast surface. If you don't hit the greens in regulation, you just can't score on a course like that."

Britz said she sensed trouble when she surveyed the course the Sunday (July 8) before the tournament started.

She realized the greens would be extremely fast at that point, and certain pin placements on each hole would make it very difficult on the players.

Her impressions of the course proved to be correct



**Britz**

when the first day of play was complete.

"The projected cut was at 11-over-par after the first round (the final cut was at 12 over after two days of play), and the cut line at most tournaments is something like one, two or three over-par," she said.

"I don't think I've shot scores like I did (Thursday and Friday) since I was 17 years old, and I wasn't the only one saying that. I heard a lot of people say they've never shot scores like they did during their careers."

All U.S. Opens are staged on extremely tough courses, and it was clear the Chicago Golf Club lived up to those expectations.

The tournament ended with four players registering under-par tallies led by Laura Davies, who posted a 16-under-par score to win by 10 strokes.

"It rained on Friday night and I think that helped with the scoring over the weekend. It made the greens softer and

**Britz/continued on page 2B**

# Legion advances to District competition

**By John Rittenhouse**

The Luverne American Legion Baseball Team advanced out of the Sub-District Playoffs after posting a pair of wins at Redbird Field Saturday.

Luverne posted a six-run win over Tracy in the opening game before nipping Pipestone by one run to win the tournament title.

The 14-3 Cardinals open the Sub-State Tournament in St. James Monday (July 23).

**Luverne 4, Pipestone 3**

The Cardinals clinched a berth in the Sub-State Tournament by defeating Pipestone by one run during Saturday's championship game at Redbird Field.

Luverne scored four runs in the game's first three innings

and Jake Haugen protected the early offensive support by tossing a strong seven-inning game.

Haugen fanned six batters and limited Pipestone to three runs and four hits.

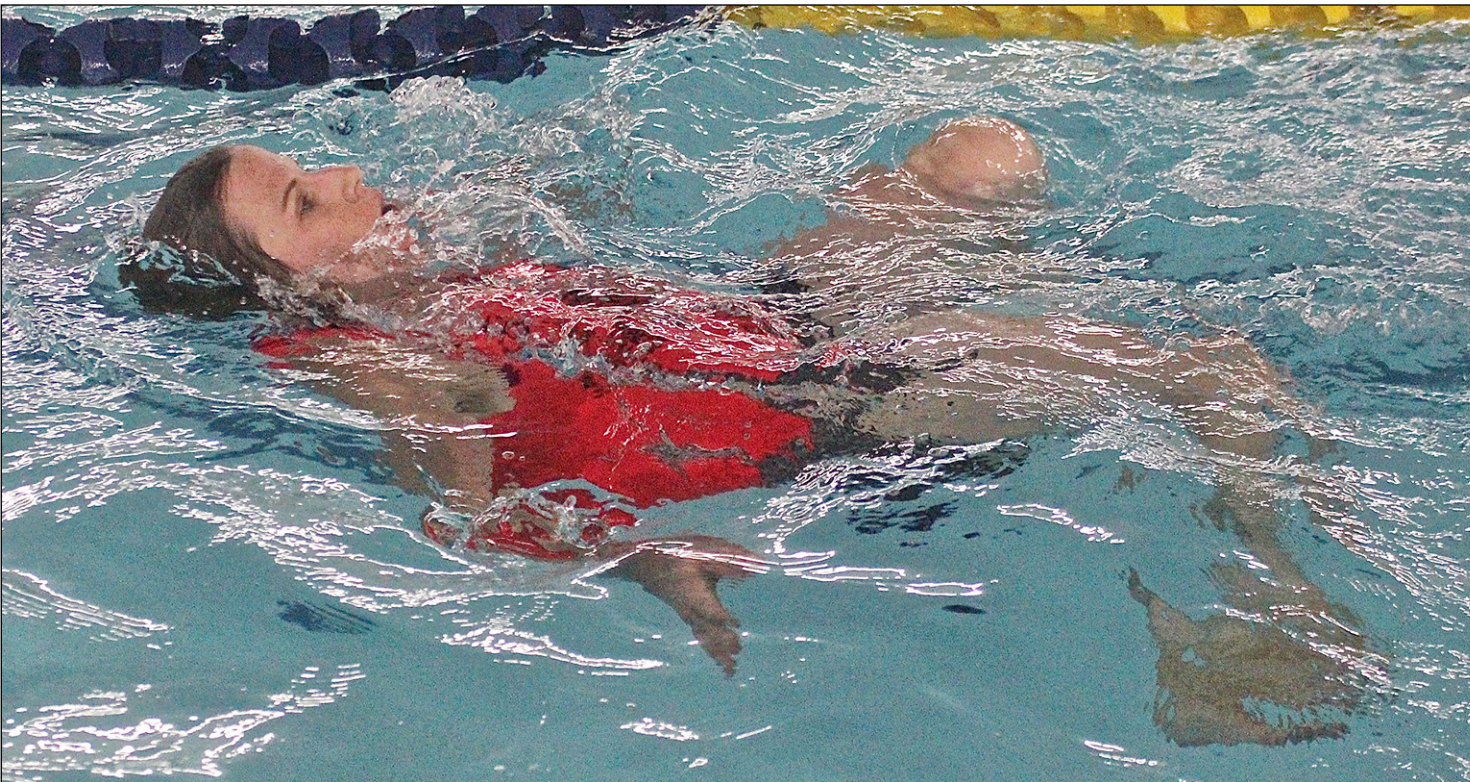
Luverne took a 2-0 lead when Haugen registered an RBI ground out and Derek Lundgren singled home a run in the bottom half of the first inning.

Pipestone scored once in the top of the second to make it 2-1, but the Cardinals responded by plating single runs in the bottom of the second and third innings to up the lead to 4-1.

Tyler Reisdorfer recorded a sacrifice fly to account for the second inning run.

Declan Beers doubled and

**Legion/continued on page 2B**



John Rittenhouse photo/0719 wcc 5  
Pipestone's Casie Goebel uses the backstroke to complete her swimming challenge during Thursday's WWC in Luverne.

# Luverne athletes help team place second at eighth version of World Wienerman Championship

**By John Rittenhouse**

A team consisting of four women from South Dakota made a big impact at the eighth annual World Wienerman Championship in Luverne Friday.

The South Dakota foursome, participating as the Hot Mess Express, not only won the women's division title during a triathlon that includes running, biking, swimming and eating challenges.

They also claimed the event's overall championship.

Sioux Falls entries Jaqueline Palfy and Sharleen Stevens, Lennox competitor Nancy Meendering and Brandon's Natalie Kaufman-Stamp produced the winning time of 1:23.50.

The Hot Mess Express squad bested second-place team I Dream of Weenie by more than four minutes.

I Dream of Weenie, consisting of Luverne's Dave Duffy and Krista Ahrendt, Pipestone's Casie Goebel and Harrisburg, South Dakota, athlete Amanda Adams, produced a time of 1:28.12 to win the Co-Ed division title.

The Good Ol' Dogs won the men's division title with a time



John Rittenhouse photo/0719 wwc 7  
Luverne's Krista Ahrendt takes a bite out of the Pigs in a Poncho eating challenge during the World Wienerman Championship.

of 1:34.27.

Pipestone's Eric Wurster, Mike Pater, Trevor Tiefenthaler and Jennings Wallace form the team.

The Super Sloths placed second in the Co-Ed division with a time of 1:29.52.

Sioux Falls' competitor Eric Van't Hof and Edgerton's

Rachelle VandeGriend and Ivan VandeGriend and Chandler's Marilyn VanPeursen formed the Super Sloths squad.

South Dakota competitors Jenna Stroup, Jenna Booth and Melanie Petersen of Sioux Falls and Hartford's Jessica Alvey formed the PR Dogs



John Rittenhouse photo/0719 wcc 16  
Luverne's Dave Duffy begins his bike leg on Blue Mound Avenue during Thursday's World Wienerman Championships.

squad.

The PR Dogs finished second in the women's division with a time of 1:30.22.

The Prairie Chicks, consisting of Pipestone's Laura Wurster, Hollie Pater and Stacie Wallace and Woodstock's Stacy Fey, placed third in the women's division with a time of 1:34.27.



John Rittenhouse photo/0719 legion 11  
Luverne pitcher Derek Lundgren flips a throw to register an out during Saturday's Sub-District Playoff win against Tracy.



# Chicago Steel ship Nelson to Omaha

**By John Rittenhouse**  
A 2018 Luverne High School graduate will be playing in the Western Conference of the United States Hockey League once again.  
Jaxon Nelson, who played with the Sioux Falls Stampede the last two seasons, appeared to be on his way to USHL's Eastern Conference when he was traded to the Chicago Steel in early June.  
Those plans changed late last

week, when Nelson was dealt from the Steel to the Omaha Lancers, a team that plays in the Western Conference.  
Nelson was shipped to Omaha for three players and three future draft picks.  
The forward produced 35 points (15 goals and 20 assists) in 112 games as a member of the Stampede.  
The Lancers open the 2018-19 season Sept. 27.

## Britz/continued from page 1B

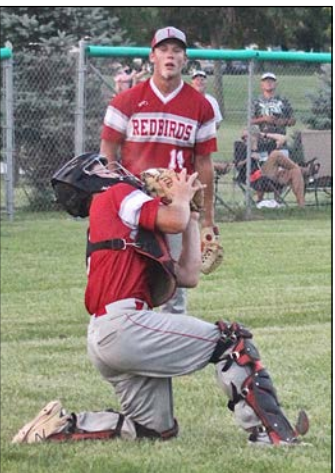
they held more shots," Britz said.  
Although Britz didn't achieve her desired results on the course, she said playing in the tournament was a positive experience.  
"It was a lot of fun and I really enjoyed it. I got to talk with lots

of people I haven't seen in 20 years, and I thought they put on a good tournament. I think I was the third-oldest player there and it was nice to play in a tournament at the age of 75. Overall, I enjoyed the whole experience."

# Redbirds wrap up 15-5 regular season Sunday

**By John Rittenhouse**  
The Luverne Redbirds wrapped up a 15-5 regular season by winning two of three games in a five-day span last week.  
After taking a one-run setback in Pipestone July 11, Luverne posted an 11-run home win over Tracy Friday and prevailed by 13 runs in Adrian Sunday.  
As champions of the Gopher League, the Redbirds receive a bye for the first round of the Region 13C Playoffs. Luverne will host a game to open their playoffs July 25.

**Luverne 13, Adrian 0**  
The Redbirds completed the regular season by trouncing the A's by 13 runs Sunday in Adrian.  
Codie Zeutenhorst pitched a seven-inning shutout and Logan Norman drove in six runs at the plate to lead Luverne to a convincing win.  
Declan Beers, who registered three RBIs in the contest, opened the scoring with a run-scoring double in the first inning and doubled home another run during a three-run rally in the third inning.  
Norman doubled home a run and Connor Crabtree added an RBI single to the rally in the third.  
Luverne put the game away with an eight-run fifth inning featuring a grand slam homerun by Norman.  
Andrew DeBoer and Tyler Reisdorfer slapped RBI singles and Zeutenhorst and Beers contributed RBIs to the eight-run uprising.



0719 redbirds 13

Luverne catcher Declan Beers snags a pop fly in fair territory as Redbird pitcher Conner Crabtree watches the play during a 2-1 loss to the Pipestone A's in Pipestone June 11.

Norman capped his six-RBI game with a run-scoring single in the seventh inning.  
Zeutenhorst fanned nine batters and limited Adrian to two hits.

Box score	AB	R	H	BI
Hoffman	4	2	1	0
Reisdorfer	4	3	3	1
Zeutenhorst	4	1	0	1
Beers	3	2	2	3
Norman	5	3	4	6
Crabtree	3	1	2	1
DeBoer	4	1	1	1
Pick	1	0	0	0
Mauer	3	0	1	0
Johnson	3	0	1	0
Gonzalez	1	0	0	0

**Luverne 13, Tracy 2**  
The Redbirds bounced back from a loss 24 hours earlier to nail down an 11-run home win over Tracy Thursday.

Wrap/continued on page 3B



John Rittenhouse photo/0719 MG derby

Dean Elias (left) and Dan Kern (right) teamed up to win The Derby title at the Luverne Country Club Saturday.

## Rally/continued from page 1B

Sells and Beyenhof recorded four and one-half points on Saturday to earn a share of second place in the final standings with 13 ½ total points.  
Member Ryan Fick and his guest, Lake Benton's Adam Steffes, charted 10 ½ points on Saturday to gain a share of second place in the final standings with 13 ½ points.  
Tim and Pat Connell posted one point on Saturday to finish fourth as a team in the tournament with 13 points.  
Three teams shared fifth place in the final standings

with 11 ½ points.  
Member Darwin Elbers and guest Keith Boeve (St. James), member Steve Smedsrud and guest Troy Veld (Lismore), and member Mark Iveland and guest David Iveland (St. Peter) shared fifth place at tournament's end.  
Haakenson and Kashdan placed eighth with 11 points, while member Eric Sandbulte and guest Brad Bergman (Brandon, South Dakota,) finished ninth with 10 and ½ points.  
Kashdan won the tournament's low net award



John Rittenhouse photo/0719 MG events

Tyler Kashdan (left) and Jason Sudenga (right) won the low net and low gross titles respectively during the M-G tourney.

## Legion/continued from page 1B

scored on an error in the third.  
Pipestone did make it a game by scoring single runs in the fourth and fifth innings, but the visitors were unable to produce runs in the final two frames.

Box score	AB	R	H	BI
Reisdorfer	2	1	0	1
Haugen	3	0	0	1
Beers	2	2	1	0
Reisch	3	0	0	0
Lundgren	3	0	1	1
Bartels	3	0	1	0
Smith	0	0	0	0
Sterrett	3	0	1	0
Johnson	2	1	0	0
Crabtree	2	0	1	0
Buss	0	0	0	0

**Luverne 7, Tracy 1**  
The Cardinals opened the tournament by besting Tracy by six runs during Saturday's opening game.  
Luverne scored three runs in the home half of the first inning and never lost control of the contest the rest of the game.  
Charlie Reisch registered a sacrifice fly and Isaiah Bartels and Jacob Van Dam drew bases-loaded walks to give Luverne a 3-0 lead in the first inning.  
Tracy scored once in the top of the third to make it a 3-1 game, but the Cardinals scored twice in the bottom of the third and added single runs in the fourth and fifth innings to win handily.



John Rittenhouse photo/0719 legion 9

Luverne second baseman Mark Sterrett waits for a throw from the catcher as a Tracy runner successfully steals a base during Saturday's Sub-District Tournament game at Redbird Field.

Colby Crabtree singled home a pair of runs in the bottom of the third before Beers ripped an RBI double in the fourth to up the lead to 6-1.  
Crabtree doubled in the fifth inning before giving way to courtesy runner Quinn Buss.  
Buss moved to third base when Reisdorfer reached base on an infield single.

When Buss realized the Tracy first baseman wasn't paying any attention to him after Reisdorfer was ruled safe at first, he alertly raced home with the final run of the game.  
Lundgren collected the pitching win after tossing six innings of six-hit, six-strikeout, one-run ball.  
Chase Johnson retired the side in order during the

seventh inning.

Box score	AB	R	H	BI
Reisdorfer	3	1	1	0
Haugen	1	2	0	0
Beers	3	1	1	1
Reisch	3	0	0	1
Lundgren	3	1	0	1
Bartels	3	0	0	1
Smith	0	0	0	0
Sterrett	2	1	0	0
Van Dam	0	0	0	1
Crabtree	3	0	2	2
Buss	0	1	0	0

Dining and entertainment

SPLISH SPLASH SUMMER BASH

THURS. JULY 19 5-7 PM

FREE WATER GAMES & ACTIVITIES

\$3 BARBEQUE, CHIPS, COOKIE & A DRINK SERVED BY THE ROCK COUNTY HISTORICAL SOCIETY

SPONSORED BY LOCAL BUSINESSES

THE PLAZA AT MAIN ST. MCKENZIE ST.

GREEN LANTERN

Steakhouse NOW OPEN Daily at 5 p.m.

Call us for your anniversaries, graduations, small business meetings

Sunday Brunch Every Sunday 10 a.m. - 2 p.m.

• ROAST BEEF • HAM • BACON • SAUSAGE • EGGS • FRENCH TOAST • AND LOTS MORE!

Adults \$10.95 Kids under 13 \$7.95

GREEN LANTERN CAFE & BAR HARDWICK, MN 507-669-2246

Opens 7 a.m. daily

PALACE THEATRE UPCOMING EVENTS

July 20 • 9:30 a.m.  
\$5 admission  
Kids Summer Cinema Movie  
"Despicable Me 3"  
Sponsored by Exchange State Bank, American Family Insurance - Nicholas Dominga, and M&L Electric.

July 20 - 22 • 7:00 p.m. nightly  
\$7 / adults, \$5 / students  
Movie - "Jurassic World"

Afternoon Escape  
July 26 • 2:00 p.m • \$5 admission  
Movie - "Life of the Party"

PALACE THEATRE

Find us on Facebook  
Palace Theatre Luverne

Box office is open  
Monday - Friday 12 p.m. - 5 p.m.  
507-283-4339

104 E. MAIN ST. • PO BOX 541 • LUVERNE, MN 56136  
507.283.4339 • WWW.PALACETHEATRE.US

New to Market

Bloody Mary & Margarita available

Get Zinged!

Luverne Blue Mound Liquor

319 W Main St, Luverne 507-449-5052

Gift Cards available

Follow us on Twitter @bluemoundliquor & Instagram luvernebluemoundliquor

2018 ROCK COUNTY FAIR

Advance Ride Tickets

8 TICKETS FOR \$20.00 (Advance tickets 1 ticket per ride)

WRISTBAND NIGHT SPECIAL

Buy a wristband at the carnival ticket booth for \$20.00 - unlimited rides all night (Thursday, July 25 | 5-9PM)

ON SALE NOW!

TICKETS AVAILABLE AT:  
RAUKS HILL TOP STOP  
TEAL'S FOOD CENTER  
LUVERNE PIZZA RANCH  
LUVERNE CHAMBER

TICKET SALES END OF THE DAY: TUESDAY, JULY 24



# Youth teams win Summer Recreation tournament titles



Photo courtesy Tim Jarchow

### Major League champs

Papik Motors won the Luverne Community Education Major League Baseball Tournament title July 9. Team members include (front row, from left) Tyler Arends, Uriel Hernandez, Mitchell Sauer, Matthew Rogers, Steven Woods, (back) coach Mike Stroh, Jacob Stroh, Keaton Ahrendt, Blaik Bork, Owen Janiszkeski, Jesse Aning and coach Shane Sauer. Missing are Jaden Reisch, Carter Sehr, Patrick Kroski, Bryce Nelson and Leif Ingebretsen.



John Rittenhouse photo/0719 community education

### Minor League champs

Luverne Community Education captured the championship of the Minor League Baseball Tournament Thursday. Team members include (front row, from left) Zachary Moss, Ian Thorson, Kale Ver Steeg, Vaughn Sandbulte, Kelby Schomacker, Charlie Mostad, (back) coach Matt Mostad, Blake Sauer, Maddox Miller, Gavin Hoven, Dawson Holtz, Jaydon Johnson and coach Jon Schomacker. Missing is Jesse Vis.



Photo courtesy Tim Jarchow

### Minor League Softball champs

Sudenga Communications won the Luverne Community Education Minor League Softball Tournament title July 9. Team members include (front row, from left) Alycia Scott, Dakotah Sina, Jerzey Hood, (back) coach Austin Kurtz, Rylee Kurtz, Kylie Kindt, Khloe Visker and Sophia Remme. Missing is Lauren VanSurksum.



John Rittenhouse photo/0719 donut 4

Chad Kucker (left), Brandon, South Dakota, and Aaron Bjorkman, Sioux Falls, South Dakota, pull into the donut stop in Beaver Creek during Saturday's Tour de Donut.

## Tour de Donut debuts Saturday

By John Rittenhouse

The first Tour de Donut staged on Saturday proved to be a big hit.

A total of 47 competitors participated in one of the 55-, 33- or 17-mile events, while others opted to take part in a 10-mile fun ride.

All divisions of the Tour de Donut are timed events, with the participants' times adjusted by how many donuts they consume at designated stops throughout the course.

All the events started in the Luverne City Park, and donut consumption was optional.

The 17-mile ride included one donut stop in Beaver Creek, while the 33-mile event included donut stops in Beaver Creek, Hills and Steen.

The 55-mile event included donut stops in Beaver Creek, Hills and Steen, but the course also led them to Valley Springs,



John Rittenhouse photo/0719 donut 7

Luverne's Deven Porter sits down to consume a donut at the stop in Beaver Creek during Saturday's Tour de Donut.

South Dakota, and Lester, Iowa.

Estherville, Iowa, entry Jim Prust won the 55-mile event with a scratch time of 3:02.24 and an adjusted time of 2:44.24.

Jessica Alvey of Hartford, South Dakota, won the 17-mile event with a scratch time of 1:08.51 and an adjusted time of 1:02.51.

Minneapolis entry Cory Docken won the 33-mile ride with a scratch time of 2:02.31. He had an adjusted time of 1:56.31.

No Rock County residents participated in the 55-mile event.

Luverne's Phoebe Flom, Richard and Lynette Ossefoort, Audrey Claussen, Angela Nolz and Michelle and Dennis Munk competed in the 33-mile ride, as did Beaver Creek's Nicole and Kyle Woodley.

Flom won the 30-49 age division for females with a scratch time of 2:19.11, while Claussen won the 50 and over female division title with an adjusted time of 2:08.42.

## Wrap/continued from page 2B

Luverne scored seven unanswered runs in the first four innings of the game and outscored the Express 6-2 the rest of the way to win by the 10-run rule after six and one-half innings of play.

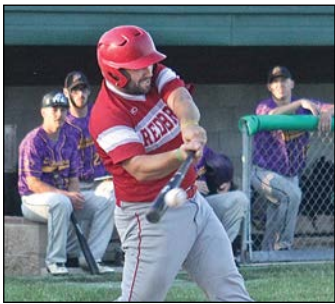
Reisdorfer, who drove in three runs at the plate along with Zeutenhorst and Skyler Wenninger, opened the scoring with a two-run single in the second inning.

Zeutenhorst and Beers plated runs with groundouts and Connor Crabtree delivered an RBI single in the third inning to make it a 5-0 game, and the score was 7-0 when Zeutenhorst ripped a two-run double in the fourth.

Tracy scored twice in the top of the fifth to make it a five-run (5-2) difference, but the Redbirds settled the issue by scoring four runs in the bottom of the fifth and twice in the sixth.

Wenninger tripled home three runs and Phil Paquette added an RBI single in the fifth inning.

Zach Loosbrock recorded a sacrifice fly and Reisdorfer capped the scoring with an RBI



0719 redbirds 3

Luverne's Phil Paquette makes contact at the plate during a 2-1 loss to the Pipestone A's in Pipestone.

single in the sixth.

Brooks Mauer received the pitching win after tossing six innings of six-hit, two-run, four-strikeout ball.

Ryan Gonzalez pitched a scoreless seventh inning and fanned two batters.

Box score	AB	R	H	BI
Hoffman	4	1	0	0
Wenninger	1	3	1	3
Paquette	3	2	2	1
Johnson	1	0	0	0
Zeutenhorst	4	0	1	3
Beers	3	0	0	1
Mauer	0	0	0	0
Norman	1	4	1	0
Crabtree	3	0	1	1
Z. Loosbrock	3	2	2	1
Reisdorfer	4	0	2	3

### Pipestone 2, Redbirds 1

The Redbirds struggled offensively during a one-run loss in Pipestone July 11.

Luverne was limited to one hit and placed a total of four runners on base during the contest.

Pipestone gained the upper hand by plating unearned runs in the fifth and sixth innings.

Luverne countered by scoring one unearned run in the top of the eighth.

Beers lifted a fly ball to the outfield that was gloved and dropped by the right fielder for an error. Two throwing errors later, Beers scored to cap the scoring in a 2-1 game.

Crabtree pitched eight innings of two-hit, 10-strikeout ball during the loss.

Norman's infield single in the eighth inning proved to be Luverne's lone hit.

Box score	AB	R	H	BI
Reisdorfer	3	0	0	0
Wenninger	3	0	0	0
Paquette	4	0	0	0
Zeutenhorst	3	0	0	0
Beers	3	1	0	0
Norman	3	0	1	0
Crabtree	3	0	0	0
Z. Loosbrock	3	0	0	0
Johnson	0	0	0	0
Hoffman	3	0	0	0

## SPORTS CLIPBOARD

### Rock County Sportsman's Club July 10

#### Team Scores:

Slocum Taxidermy 2 – 114, 114  
Slocum Taxidermy 1 – 110, 114  
Minnwest Bank – 113, 111  
Luverne Body Shop – 112, 107  
Agri-Energy LLC – 106, 112  
Big Orv's Bar – 100, 110  
Main St. Financial – 107, 109  
Slocum Taxidermy 3 – 106, 108  
Freedom Ranch Firearms – 96, 105  
Howling Dog Saloon – 103, 100

Pizza Ranch – 91, 103  
Nergaard Construction – 100, 98  
Loosbrock Electric – 91, 92  
Bill's H2O – 86, 92  
Mickie's Bar & Grill – 82, 87

#### Individual scores:

25 x 25  
Dave Stearns – 2  
Jim Slocum – 3  
Chris Balster – 2

24 x 25

Jim Slocum – 2  
Dave Stearns – 2  
Chris Balster  
Steve Nath  
Rick Ossefoort  
Bob May  
Jon Lang  
Mike Gangestad  
Loren Reese  
Cole Voss  
Hunter Ahrendt  
Paul Steen  
Clint Metz – 4

## YOU'RE INVITED

Please Join Us For

### Coffee at the Exchange

9:00 am - 11:00 am Exchange State Bank  
310 Gabrielson Rd • Luverne, MN

2018 Coffee at the Exchange Schedule: Coffee & goodies served.  
**Tuesday, July 24, 2018**

MARK YOUR CALENDAR & BRING YOUR FRIENDS.  
ENJOY REFRESHMENTS & FELLOWSHIP.

**Exchange**  
STATE BANK  
Local. Dependable. Strong  
**Member FDIC**

## Experience the X Factor

Super-fast download speeds from **60 Mbps to 1 Gig\***

**Powerful In-Home WiFi**

**FREE Music Choice app**

**Phone service** is the perfect backup to your cell

No commitments. **No contract!**

**INTERNET PACKAGES**  
STARTING AT

**\$29.99**  
A MO. FOR 1 YEAR  
Plus activation, installation, modem rental, taxes and fees.

**NO CONTRACT!**

**ADD RELIABLE HOME PHONE JUST \$10\***  
**MORE A MONTH FOR ONE YEAR!**

**XSTREAM**  
POWERED BY Mediacom

FIND THE SPEED THAT'S RIGHT FOR YOU  
**CALL 866-609-6180**

\*Internet & Phone Pricing: Monthly price is good for one year and thereafter increases each year until the third year when services will begin to be billed at the standard rate then in effect. Price does not include standard installation fee (\$99.99, more if special work needed); a one-time \$10 activation fee; or other one-time fees that may apply because of options you select. Price also does not include the following recurring monthly charges: (i) modem fee, currently \$10; (ii) taxes and other amounts required by law to be collected or paid; or (iii) fees for optional services or equipment you may want. All of these monthly charges may increase from time to time. After the first year, if our standard rate for any service in your package that is not free increases or we institute a new fee for service subscribers generally, we can pass that increase or new fee along to you. **Internet Service Usage Allowance & Speeds:** Internet service is subject to a usage allowance ranging from 150 gigabits to 6,000 gigabites per monthly billing period depending on Internet service. Excess usage will be billed at \$10 for every increment of up to 50 additional gigabytes used. For example, if usage exceeded the allowance by 51 gigabytes, the additional charge would be \$20. Usage allowances and excess usage charges are subject to change at any time. Download and upload speeds are not guaranteed and may vary. **Offer Availability:** Offer may be terminated any time without notice. Offer may not be available in all areas, cannot be combined with any other offer, is not transferable and is void where prohibited. Available only to residential customers who have not subscribed to any offered service within prior 90 days and meet applicable credit and other requirements. Customer must agree to all applicable subscriber terms and policies. Other terms and conditions may apply. M741-34387



# Star Herald CHURCH

## St. Catherine Catholic Church 203 E. Brown St., Luverne

**St. Catherine Ph.: 283-8502; email: stcatherine@iw.net**  
Thursday, July 19: 7 p.m. St. Catherine PC. Saturday, July 21: 5:30 p.m. Mass at St. Catherine. Sunday, July 22: 8:30 a.m. Mass at St. Mary. 10:30 a.m. Mass at St. Catherine. Tuesday, July 24: 7:30 p.m. St. Catherine Knights of Columbus. Thursday, July 26: 4 p.m. Mass at Veterans Home.

## Luverne Christian Reformed Church 605 N. Estey St., Luverne

**Office Ph. 283-8482; Prayer Line Ph. 449-5982  
www.luvnrcrc.com — office@luvernecrc.com**

### Roger Sparks, Pastor

Sunday, July 15: 9:30 a.m. Worship Service. 6:30 p.m. Worship Service.

## First Baptist Church

**1033 N. Jackson St., P.O. Box 975, Luverne  
Ph. 283-4091; email: fbcluv@iw.net — www.fbcluverne.org**

### Walt Moser, Pastor

Thursday, July 19: 6 a.m. Men's Bible Study. 9 a.m. to noon Vacation Bible School. 8 p.m. Worship service on Channel 3. Friday, July 20: 9 a.m. Vacation Bible School. 6 p.m. VBS program. Sunday, July 22: 8:15 a.m. Sunday School. 10:30 a.m. Morning Service. 6 p.m. Quarterly Business Meeting. Monday, July 23: 2:30 p.m. Shetek Camp grades 4-5 for the week. Tuesday, July 24: 7 a.m. Men's Bible Study. Thursday, July 26: 6 a.m. Men's Bible Study. 8 p.m. Worship Service on Channel 3.

## Grace Lutheran Church 500 N. Kniss Ave., Luverne

**Ph. 507-283-4431; www.graceluverne.org —  
graceluverne@iw.net**

### Ron Nichols, Pastor; Stephen Hilding, Associate Pastor

Thursday July 19: 7:30 a.m. Mom's Bible Study at The Bean. 8:30 a.m. Missions in Action. Friday, July 20: 6:30 p.m. Worship on Channel 3. Saturday, July 21: 5:30 p.m. Worship. Sunday, July 22: 8:15 a.m. Radio Broadcast. 9 a.m. Worship. 10 a.m. Fellowship coffee/treats; Adult Study. Monday, July 23: Grace Notes deadline. 1-7 p.m. Bloodmobile. 4:30 p.m. Worship on Channel 3. Tuesday, July 24: 9 a.m. Staff Meeting. Circle meetings. Wednesday, July 25: 7 a.m. Men's Bible Study. 6 p.m. Woven Worship. Grace serves Wednesday Community Free Meal at United Methodist Church. Thursday, July 26: 7:30 a.m. Mom's Bible Study at The Bean. Circle meetings.

## Bethany Lutheran Church 720 N. Kniss Ave., Luverne

**Ph. 507-283-4571 or 507-449-0291 or 605-215-9834  
pastorapalmquist67@yahoo.com**

### Andrew Palmquist, Pastor

Thursday, July 19: 2 p.m. Ladies Aid serving at Mary Jane Brown Home. Sunday, July 22: 9:15 a.m. Bible Class. 10:15 a.m. Worship Service with Communion.

## American Reformed Church 304 N. Fairview Dr., Luverne

**Ph. 283-8600; email: office@arcluverne.org**

### Mike Altena, Pastor

Thursday, July 19: 6-8 p.m. Tumbling Tykes. 6:30 p.m. Motorcycle & More ride. Friday, July 20: 6:30 a.m. Community Men's Bible Study. 4:30 p.m. REFIT Fitness. Sunday, July 22: 9:30 a.m. Worship service; James Koller pulpit supply. 7 p.m. Senior RCYF. Monday, July 23: Office closed. Tuesday, July 24: 10 a.m. Staff Meeting. Wednesday, July 25: 4:30 p.m. REFIT Fitness. 7 p.m. Praise Team Practice.

## St. John Lutheran Church 803 N. Cedar St., Luverne

**Ph. 283-2316, Dial-A-Devotion Ph. 283-4005  
email: stjoh@iw.net — www.stjohnlutheranluverne.org**

### Gary Klatt, Pastor

Saturday, July 21: 5:30 p.m. Worship with Communion. Sunday, July 22: 9 a.m. Worship with Communion. 1:30 p.m. Worship at Mary Jane Brown Home. 2:15 p.m. Worship at Poplar Creek. Wednesday, July 25: 9:30 a.m. Bible Study. 10:30 a.m. Assemble newsletter.

## First Assembly of God Church

**1075 110<sup>th</sup> Ave., 2 miles west of Luverne on County Rd. 4**

Sundays: 9 a.m. Sunday School. 10 a.m. Morning Worship. 6:30 p.m. School of the Holy Spirit. Wednesdays: 7 p.m. Kids Connection; Men's Bible Study with Pastor Ken; Women's Bible Study with Pastor Gloria.

## United Methodist Church

**109 N. Freeman Ave., Luverne  
Ph. 283-4529; email: luverneumc@iw.net**

### Dorie Hall, Pastor

Thursday, July 19: 1-3 p.m. Rock County Food Shelf. 6:30 to 8:30 Vacation Bible School. Saturday, July 21: 8 p.m. AA Meeting. Sunday, July 22: 9 a.m. Coffee Hour/ Adult SS. 10 a.m. New United Church Service. 4:30 p.m. Genesis/Revelation Bible Study. Monday, July 23: Messenger deadline. 6 p.m. Worship Service meeting. 8 p.m. AA Meeting. Wednesday, July 25: 5:30 p.m. Community meal. 8 p.m. AA Meeting. Thursday, July 26: 1-3 p.m. Rock County Food Shelf.

## First Presbyterian Church

**302 Central Lane, Luverne  
Ph. 283-4787; email: Firstpc@iw.net — www.fpcluverne.com**

Thursday, July 19: 10 a.m.: Worship Service on Channel 3. 11 a.m.-1 p.m. Presbyterian Salad Luncheon. Sunday, July 22: 9:30 a.m. Worship Service. 10:30 a.m. coffee and fellowship. Monday, July 23: No quilting. Tuesday, July 24: 10 a.m. and 6 p.m. Worship on Channel 3. Wednesday, July 25: 6 p.m. Church picnic at Luverne City Park.

## Living Rock Church

**500 E. Main St., Luverne  
Ph. 449-0057; www.livingrockswmn.org**

### Billy Skaggs, Pastor

Sundays: 10:30 a.m. Worship; Kids Rock Children's Ministry. 6 p.m. Youth Ministry. Life groups meet throughout the week.

## New Life Celebration Church

**110 N. Oakley, Luverne  
Ph. 449-6522; email: newlifecelabration@gmail.com**  
Sundays: 9:30 a.m. Worship at 110 N. Oakley. Every third Thursday: 4:30 p.m. Food give-away at Senior Citizens Center. Bible Study groups meet at various times and days.

## Zion Evangelical Lutheran Church 305 E. 2<sup>nd</sup> St., P.O. Box 36, Hardwick

Thursday, July 19: 3:30 p.m. Worship on Channel 3. Friday, July 20: 3:30 p.m. Worship on Channel 3. Sunday, July 22: 10:30 a.m. Worship Service. Monday, July 23: 1 p.m. Quilting. Thursday, July 26: 3:30 p.m. Worship on Channel 3.

## Ben Clare United Methodist Church 26762 Ben Clare Ave., Valley Springs, S.D.

**igtwlb@WOW.net  
Bill Bates, Pastor**

Sundays: 9 a.m. Worship; 10 a.m. Fellowship; 10:30 a.m. Sunday School for all ages.

## First Lutheran Church

**300 Maple St., Valley Springs, S.D.  
Ph. (605) 757-6662  
Laura Phillips, Pastor**  
Sunday, July 22: 10 a.m. Worship Service at Palisade Lutheran.

## Palisade Lutheran Church

**211 121<sup>st</sup> St., Garretson, S.D.  
Ph. (507) 597-6257 — firstpalisade@alliancecom.net**  
Laura Phillips, Pastor  
Sunday, July 22: 10 a.m. Worship Service at Palisade Lutheran. Thursday, July 26: 1:30 p.m. WELCA meeting.

## Steen Reformed Church 112 W. Church Ave., Steen

**Ph. 855-2336  
Jeremy Wiersema, Pastor**  
Sundays: 9:30 a.m. Worship; service broadcast on KQAD. 10:45 a.m. Sunday School. 6 p.m. Youth Group. Evening worship at 6 p.m. first and third Sundays. Wednesdays: 7 p.m. Midweek.

# Making excuses

"The serpent deceived me..."  
Genesis 3:13b (ESV)



Little Ole sat on the front step petting a dog sitting nearby. As the mailman approached he said, "Good morning, Little Ole. Does your dog bite?"

"No," answered Little Ole. "My dog never bites at all."

When the mailman walked up the steps, the dog bit him. "Hey, kid, you lied to me. You said your dog doesn't bite."

"Mine does not," replied Little Ole, "but dis is not my dog."

Since the beginning of time, people have been making excuses. Genesis 3 tells us that when God confronted Adam and Eve about their disobedience, Adam responded by saying, "The woman whom You gave to be with me, she gave me fruit of the tree, and I ate." Eve also had someone to blame for her disobedience, saying, "The serpent deceived me and I ate." Neither of them wanted to take responsibility for the situation.

With some people

# BUILT ON A ROCK

**By Martha Fick,  
Good Samaritan  
chaplain, retired**

it is always someone else's fault — and if we're honest with ourselves, making excuses comes pretty easy to all of us. Two of the things that make Christianity so different from other faiths are repentance and forgiveness. God doesn't want to hear our excuses. He wants us to be honest with ourselves and with Him. "If we confess our sins, He is faithful and just to forgive us our sins and to cleanse us from all unrighteousness." 1 John 1:9

God is willing to forgive, but first we have to own up to our own shortcomings and the reality of the situation.

Lord God, help us to see ourselves honestly and lovingly through your eyes. Forgive us and redeem us for Jesus' sake. Amen.

## First Presbyterian Church

**201 S. 3<sup>rd</sup> St., P.O. Box 73, Beaver Creek  
Ph. 507-935-5025  
Email: lori.firstpres@gmail.com**  
Sundays: 9:30 a.m. Morning Worship.

## Magnolia United Methodist Church

**501 E. Luverne St., Magnolia  
Church Ph. 507-483-2492; email: adrmagumc@gmail.com**  
**www.facebook.com/adrianmagnoliaumc**  
Sundays: 9 a.m. Magnolia Worship Service. Wednesdays: 6:30 p.m. Confirmation.

## Bethlehem Lutheran Church Pastor Maggie Berndt-Dreyer

**112 N. Main St., Hills  
Ph. 962-3270  
e-mail: bethlehemluth@alliancecom.net**  
Sunday, July 22: 9 a.m. Worship at the Tuff Chapel. 10 a.m. Communion at Bethlehem. Tuesday, July 24: 2:30 p.m. Tuff Home Bible Study. 3:15 p.m. Bible Study at the Village. Wednesday, July 25: 9 a.m. Quilting.

## Hills United Reformed Church

**410 S. Central Ave., Hills  
Office Ph. 962-3254  
hillsurc@alliancecom.net  
Alan Camarigg, Pastor**  
Sundays: 9:30 a.m. and 6 p.m. Worship Services.

**These Weekly Church  
Page Messages are  
contributed to God's  
Work through the  
Church and by these  
concerned and  
responsible citizens  
& businesses:**

Call Rick or Chantel to  
place your ad!

**283-2333**

**Tuff Memorial Home,  
Retirement Apartments  
& Tuff Village**  
"A Home Where Residents SMILE"  
Hills, Minnesota  
**Phone 507-962-3275**

**Papik  
MOTOR OIL  
LUVERNE, MINN.**  
I-90 in Luverne, MN  
**507-283-9171 • 1-800-634-7701**

Read us online!  
**Rock County  
STAR HERALD**  
**www.Star-Herald.com**

*Trust In Him*



**Pizza Ranch**  
110 E. Main,  
Luverne, MN  
Phone 507-283-2379

**MANLEY**  
TIRE & OIL SERVICE  
Manley Minnesota  
**1-800-615-3704**  
Open six days a week - Closed on Sundays  
To God be the Glory.

**CWG**  
**Business Insurance.**  
Tri-State Region *Period!*

**Rock County  
STAR HERALD**  
Luverne, MN • 507-283-2333

*Advertise  
Here*

**Luverne  
ANNOUNCER**

**To Advertise  
Call  
283-2333**

**Buffalo Ridge  
INSURANCE**  
507-283-2381 www.buffaloridgeins.com E-mail: info@buffaloridgeins.com

**McClure Electric**  
Alan M. Aanenson, owner  
*Farm, Home & Commercial Wiring*  
Luverne, MN **Phone 507-283-4716**

**First Farmers & Merchants**  
303 E. Main, Luverne, MN  
507-283-4463  
www.fimbank.com  
**We believe in you.™**  
Member FDIC. And the community.

**HILLS STAINLESS STEEL  
& EQUIPMENT CO., INC.**  
506 W. Koehn, P.O. Box 987, Luverne, MN  
**PHONE 507-283-4405**  
*Church is Important - Please Attend!*

**MINNWEST  
BANK®**  
• 116 E. Main St., Luverne 507-283-2366  
• S. Hwy. 75, Luverne 507-283-9131  
• Main St., Beaver Creek 507-673-2333  
Member FDIC www.minnwestbank.com

**HARTQUIST**  
Funeral and Cremation Services  
- ENGBRETSON CHAPEL -  
507-283-2777  
www.HartquistFuneral.com  
*"Let our family help your family"*  
Serving the Luverne and Surrounding Communities

**Tollefson Publishing**  
117 W. Main  
Luverne, MN 56156  
507-283-2333



Public Notice  
City Of Luverne, Minnesota  
Annual Disclosure Of Tax Increment Districts

For The Year Ended December 31, 2017  
Minnesota Statutes, Section 469.175(5)

	Pamida DISTRICT 16	Minnwest Bank - State Farm DISTRICT 17	Luverne Family Hsg DISTRICT 18	Ford Dealership DISTRICT 21	Barck Street DISTRICT 22	Sharkee's - Mert's DISTRICT 23	Barck Street DISTRICT 24
Current Net Tax Capacity	\$25,264	\$1,692	\$8,393	\$29,712	\$3,317	\$0	\$0
Original Net Tax Capacity	\$326	\$462	\$98	\$3,397	\$794	\$0	\$0
Captured Net Tax Capacity	\$24,938	\$1,230	\$8,295	\$26,315	\$2,523	\$0	\$0
Principal and Interest Payments Due in 2017	\$30,000	\$0	\$7,463	\$21,275	\$0	\$0	\$0
Tax Increment Received in 2017	\$24,111	\$1,230	\$7,936	\$23,640	\$2,312	\$0	\$141
Tax increment Expended in 2017	\$24,111	\$990	\$8,453	\$23,351	\$4,481	\$104,921	\$40,120
Month / Year First Tax Increment Receipt	Jun-99	Jun-99	Jun-99	Jun-17	Jun-17	Jul-19	Jul-18
Date of Required Decertification	12/31/24	12/31/24	12/31/24	12/31/41	12/31/42	12/30/44	12/31/43

Additional information regarding each district may be obtained from:

Barbara J. Berghorst  
City of Luverne  
305 E Luverne St.  
Luverne, MN 56156  
507-449-9900  
bberghorst@cityofluverne.org

(7-19)

County Planning Commission  
public hearing July 23

NOTICE OF PUBLIC HEARING  
ON AMENDMENTS TO ZONING ORDINANCE

NOTICE IS HEREBY GIVEN, That the Rock County Planning Commission will conduct a public hearing on Monday, July 23, 2018 at 7:00 p.m. at the Rock County Law Enforcement Center located at 1000 North Blue Mound Avenue, Luverne, Minnesota, for the purpose of considering amendments and additions to the Rock County Zoning Ordinance and which amendments shall contain a Renewable Energy Ordinance, which shall regulate the installation and operation of Wind Energy Conversion Systems (WECS) of less than 5,000 kilowatts (or 5 megawatts), pursuant to M.S. 216F, Wind Energy Conversion Systems, and Solar Energy Systems, pursuant to M.S. 216C.25, 500.30, and Minnesota Rules Chapter 1325.1100.

The full text of the proposed amendments are on file at the office of the Rock County Land Management Office, 311 West Gabrielson Road, Luverne, Minnesota. Written comments should be submitted to the Rock County Land Zoning Administrator by 4:00 p.m., July 20, 2018. All persons desiring to be heard shall be given an opportunity to present testimony.

Dated: July 12, 2018.

By Order of the Rock County Planning and Zoning Commission  
Eric A. Hartman, Zoning Administrator  
311 W. Gabrielson Road  
Luverne, MN 56156  
507-283-8862

(7-12, 7-19)

City of Luverne seeks  
street overlay bids  
by August 6

ADVERTISEMENT FOR BIDS

Sealed proposals will be received by the City Council of Luverne, Rock County, Minnesota at the Luverne City Offices, 305 East Luverne Street, P.O. Box 659, Luverne, Minnesota 56156 on Monday, the 6th of August, 2018 at 11:00 A.M. for the 2018 Street Overlay in, Luverne, Minnesota, at which time the proposals shall be publicly opened and read aloud by the City Administrator and Engineer.

The approximate quantities of work on which proposals will be received are as follows:

9,275 S.Y. Bituminous Milling  
2,750 Tons Bituminous Paving  
210 L.F. Repair Existing Culverts  
13,482 L.F. 4" Solid Line Paint  
and other related items of construction.

All bids shall be made on proposal forms furnished by the Engineer and shall be accompanied by bid security in the form of a certified check or bid bond, made payable to the City of Luverne, Minnesota, in the amount of ten percent (10%) of the bid, which security becomes the property of the City in the event the successful bidder fails to enter into contract and post satisfactory bond. Work shall commence on or after August 20, 2018 and be completed on or before June 29, 2019.

The City reserves the right to reject any or all proposals and to waive technicalities and irregularities. The City also reserves the right to increase, decrease or delete items of work to comply with budget limitations.

The City is an Equal Opportunity Employer.

The Contractor and all subcontractors shall submit to the Owner a signed statement verifying compliance with each of the criteria described in the State of Minnesota "Responsible Contractor" law as codified in Minnesota Statute section 16C.285. See the Instructions to Bidders for more details.

Complete digital project bidding documents are available at [www.questcdn.com](http://www.questcdn.com). You may download the digital plan documents for \$15.00 by inputting Quest project # 5860989 on the website's Project Search page. Please contact QuestCDN.com at 952-233-1632 or [info@questcdn.com](mailto:info@questcdn.com) for assistance in free membership registration, downloading, and working with this digital project information. An optional paper set of the proposal forms and specifications for individual use may be obtained from the office of the Engineer, DGR Engineering, 1302 South Union, P.O. Box 511, Rock Rapids, Iowa 51246, telephone 712-472-2531, Fax 712-472-2710, e-mail: [dgr@dgr.com](mailto:dgr@dgr.com), upon payment of \$50.00, none of which is refundable.

Published upon order of the City Council of Luverne, Minnesota.

CITY OF LUVERNE, MINNESOTA  
By /s/ Patrick T. Baustian  
Mayor  
(7-19)

Rock County seeks road  
bids by Aug. 6

NOTICE TO CONTRACTORS

GRADING, AGG. BASE & BITUMINOUS SURFACING / S.A.P. 067 – 638 - 001  
BIDS CLOSE @ 10:00 A.M. AUGUST 6, 2018  
LUVERNE, MINNESOTA

Sealed \*Bid Packets\* will be received by the Rock County Highway Department at Luverne, Minnesota until **10:00 A.M. on Monday, AUGUST 6, 2018.**

**READ CAREFULLY THE PROVISIONS FOR THE WAGE RATES AS CONTAINED IN THE PROVISIONS, AS THEY WILL AFFECT THIS PROJECT.**

Attention is called to the fact that the contractor must comply with the **Special Equal Employment Opportunity Provisions & Wage Rates** as contained in this Proposal.

Proposals will be opened and read publicly in the presence of the Rock County Highway Engineer at the Rock County Highway Building located at 1120 North Blue Mound Avenue in Luverne, MN immediately following the hour set for receiving bids for the following Rock County Highway work. Bids will be awarded on Tuesday, August 7, 2018 at the regular Board of Commissioners Meeting.

Construction of C.S.A.H. No. 38. The project is located in Luverne, Minnesota, from T.H. 75 to C.S.A.H. No. 4.

The major items of work are: 13,398 Sq. Yds. of Mill Bituminous Surface; 4,794 Tons of Bituminous Wear Course Mixture; 4,350 Cu. Yds. of Common Excavation; 4,242 Tons of Aggregate Base & 8,170 Sq. Yds. of Sub-grade Preparation.

Plans, specifications, and proposals may be viewed, and downloaded at [www.questcdn.com](http://www.questcdn.com) and at the Rock County Highway Department website, [www.co.rock.mn.us/highway](http://www.co.rock.mn.us/highway). Questions may be directed to the office of the Rock County Highway Engineer, 1120 North Blue Mound Avenue, P.O. Box 808, Luverne, Minnesota 56156-0808 / (507) 283 – 5010.

**The non-refundable cost for plans and one proposal will be \$30.00.**

Bids must be accompanied by a certified check or corporate surety bond drawn in favor of the Rock County Treasurer in the amount of at least five percent (5%) of the proposal.

Sealed bids shall be clearly marked "PROJECT NO. S.A.P. 067-638-001"

The Board of Rock County Commissioners reserves the right to reject any or all bids and to waive any defects therein.

Rock County is an Equal Opportunity/Affirmative Action Employer.

Mark R. Sehr, P.E.  
Rock County Highway Engineer  
(7-12, 7-19, 7-26)

Land Title Summons

NO. 67-CV-18-141

STATE OF MINNESOTA DISTRICT COURT  
COUNTY OF ROCK FIFTH JUDICIAL DISTRICT  
LAND TITLE SUMMONS IN APPLICATION  
FOR REGISTRATION OF LAND

In the Matter of Application of City of Luverne, Minnesota, and Gary Golla, d/b/a G-3 Enterprises and Barbara Golla, husband and wife, to register the title to the following described real estate situated in Rock County, Minnesota, namely:

See Legal Description which is attached hereto as Exhibit "A" and made part hereof.

Applicant(s) vs.

Internal Revenue Service - Attorney General of the United States, US Department of Justice, 950 Pennsylvania Ave NW, Washington, DC 20530-0001; AND US Attorney for the District of Minnesota, US Courthouse, 300 S. Fourth Street, Suite 600, Minneapolis, MN 55415

Sharkees Sports Bar and Grill, c/o Davis Halvorson - 516 W. Crawford, Luverne, MN 56156

Center Point Energy - Center Point Energy Minnesota Gas, 800 LaSalle Avenue, Minneapolis, MN 55402

Lorna Schoeneman - 1008 N. Spring Street, Luverne, MN 56156

Michelle L. Aanenson - 415 W. Brown Street, Luverne, MN 56156

William Aanenson - 415 W. Brown Street, Luverne, MN 56156

Luverne Farm Store, Inc.- PO Box 927, Luverne, MN 56156

Chicago, St. Paul, Minneapolis and Omaha Railway Company - Unknown Address (defunct since 1972)

also all heirs and devisees of any of the above-named persons who are deceased; and all other persons or parties unknown, claiming any right, title, estate, lien or interest in the real estate described in the Application or amendments herein, Defendants.  
THE STATE OF MINNESOTA TO THE ABOVE-NAMED APPLICANTS:  
You are hereby summoned and required to answer the Application of the Applicant(s) in the above-entitled proceeding and to file your answer to the said Application in the office of the District Court Administrator in said County, within 20 days after service of this Summons upon you exclusive of the day of such service, and if you fail to answer the Application within the time aforesaid, the Applicant(s) in this proceeding will apply to the Court for the relief demanded therein.  
Witness, District Court Administrator of said Court, and the seal thereof, at Luverne, in said

County, this 17 day of July, 2018.

Denise Brandel  
(District Court Administrator)  
By: Natalie Reisch, Deputy

/s/Benjamin Vander Koor, Jr.  
Attorney for Applicant City of Luverne  
Benjamin Vander Kooi, Jr.  
Luverne City Attorney  
127 E. Main, PO Box 746  
Luverne, MN 56156  
(507) 283-9546

Exhibit "A"

Tract I:

Commencing at the Southwest Corner of said Section 11, thence east along the South Line of said Section 60 feet, thence north 33 feet to the place of the beginning, thence continuing north parallel with the West Line of said Section and 60 feet distant easterly therefrom 361 feet 4 inches; thence easterly along a line parallel to the South Line of said Section to a point 50 feet distant easterly from the Center Line of the Railroad of the Chicago, St. Paul, Minneapolis and Omaha Railroad and distant 394.4 feet from the South Line of said Section; thence southerly along a line parallel with and distant from the Center Line of said Right-of-way measured at right angles there to a point due east of the place beginning; thence due west to the place of beginning.

Tract II:

Commencing at a point on the East Line of the W.60 feet of the SW1/4 of the SW1/4 of said Section 11 distant 394.4 feet north of the South Line of said Section 11, thence easterly along a line at right angles to the East Line of the W.60 feet of said Quarter Quarter Section to a point distant 50 feet westerly as measured at right angles from the Center Line of the Track of the Chicago, St. Paul, Minneapolis and Omaha Railway Company as the Center Line of said Track is referred to in that certain Quit Claim Deed from said Railway Company to Robert C. Morris and Emma J. Morris dated May 13, 1938; thence southerly along a line parallel with the Center Line of said Track to a point on the North Line of said S.33 feet of the SW1/4 of said Section 11; thence east along said North Line to a point distant 8.5 feet westerly as measured at right angles from the Center Line of said Track of said Railway company, established; thence northerly along a line parallel with the Center Line of said Track ICC No. 21 as now located and established to a point on a line drawn at right angles to this course through the point of beginning; thence westerly along the last-described right angle line to the point of beginning.

Tract III:

That part of the SW1/4 of the SW1/4 of Section 11 in Township 102 North of Range 45 West of the 5th PM bounded and described as follows: Beginning at a point on the North Line of the S.33 feet of said Quarter Quarter Section distant 8.5 feet westerly measured at right angles from the Center Line or the Southerly Extension thereof of Chicago, Saint Paul, Minneapolis and Omaha Railway Company Spur Track ICC No. 21 as said Spur Track is now located; thence northerly along a line parallel with said Spur Track Center Line to a point which is distant 394.4 feet north of the South Line of said Section 11; thence easterly along a line parallel to the South Line of said Section to the East Line of the 100 foot Right-of-way of said Railway Company and distant 394.4 feet from the South Line of said Section; thence southerly along the Easterly Right-of-way to the North Line of the S.33 feet of said Quarter Quarter Section; thence westerly along said North Line a distance of 60 feet, more or less to the point of beginning.

Description from Warranty Deed Instrument #188623:

All that part of Outlot Sixteen (16) in Kniss' Outlot Annex to the Village (now City) of Luverne, Minnesota, described as follows: Beginning at the Southwest Corner of said Outlot 16, thence northwesterly along the West Line of said Outlot 16 300 feet; thence easterly on a line parallel to the South Line of said Outlot 16 200 feet; thence southeasterly on a line parallel to the West Line of said Outlot 16 300 feet to the South Line thereof; thence westerly along the South Line of said Outlot 16 to the point of beginning;

and a tract of land in Outlot 16 in Kniss' Outlot Annex to the SW1/4 of Section 11 in Township 102 North of Range 45 West of the 5th PM described as follows: Commencing at the Southwest Corner of said Outlot 16, thence east (assumed bearing) on the South Line of said Outlot for 200 feet to the point of beginning, thence northwesterly along a line parallel to the West Line of said Outlot 16 300 feet; thence easterly along a line parallel with the South Line of said Outlot 16 approximately 131 feet, more or less, to a point 300 feet east of the Southwest Corner of said Outlot 16; thence southerly along a line parallel with the East Line of said SW1/4 approximately 298 feet, more or less, to a point on the South Line of said Outlot 16 300 feet easterly of the Southwest Corner of said Outlot 16; thence westerly along the South Line of said Outlot 16 100 feet to the point of beginning.

Parcel 1:

A tract of land commencing at the Southwest Corner of said Outlot 16, thence North 07 degrees 47 minutes 59 seconds West on the West Line of said Outlot 16 for a distance of 300.00 feet to the Northwest Corner of a tract described in Warranty Deed recorded in Instrument #188623, Rock County Land Records Office and to the point of beginning, thence continuing North 07 degrees 47 minutes 59 seconds West on said West Line for a distance of 64.70 feet; thence North 90 degrees 00 minutes 00 seconds East for a distance of 104.00 feet to the West Line of a tract described in Warranty Deed recorded in Instrument #135368 at No. 134 Rock County Land Records Office; thence South 07 degrees 47 minutes 59 seconds East on said West Line for a distance of 64.70 feet to the Southwest Corner of said tract and to the North Line of a tract described in said Warranty Deed recorded in Instrument #188623 at No. 160; thence North 90 degrees 00 minutes 00 seconds West on said North Line for a distance of 104.00 feet to the point of beginning;

Parcel 3:

That part of Outlot 16 in Kniss Outlot Annex to the City of Luverne, Rock County, Minnesota, described as follows: Commencing at the Southeast Corner of said Outlot 16, thence North 00 degrees 21 minutes 47 seconds East on the East Line of said Outlot 16 for a distance of 361.33 feet, thence North 90 degrees 00 minutes 00 seconds West for a distance of 231.17 feet to the point of beginning, thence continuing North 90 degrees 00 minutes 00 seconds West for a distance of 151.78 feet to the East Line of a tract of land described in Warranty Deed recorded in Instrument #135368, at No. 134 Rock County Land Records Office; thence South 07 degrees 47 minutes 59 seconds East on said East Line for a distance of 64.70 feet to the North Line of a tract of land described in Warranty Deed recorded in Instrument #188623, at No. 160 Rock County Land Records Office; thence South 90 degrees 00 minutes East on said North Line for a distance of 142.60 feet to the Northeast Corner of said tract; thence North 00 degrees 21 minutes 47 seconds East for a distance of 64.10 feet to the point of beginning;

Parcel 5:

That part of Outlot 16 in Kniss Outlot Annex to the City of Luverne, Rock County, Minnesota, described as follows: Beginning at the Southeast Corner of said Outlot 16, thence North 00 degrees 21 minutes 47 seconds East on the East Line of said Outlot 16 for a distance of 361.33 feet, thence North 90 degrees 00 minutes 00 seconds West for a distance of 231.17 feet; thence South 00 degrees 21 minutes 47 seconds West for a distance of 361.33 feet to the Southeast Corner of a tract of land described in Warranty Deed recorded in Instrument #188623 at No. 160, Rock County Land Records Office and the South Line of said Outlot 16; thence North 90 degrees 00 minutes 00 seconds East on said South Line for a distance of 231.17 feet to the point of beginning.

All that part of Outlot 16 in Kniss Outlot Annex to the City of Luverne, Minnesota, described as follows: Commencing at the Southwest Corner of Section 11 in Township 102 North of Range 45 West of the 5th PM, Rock County, Minnesota, thence North 90 degrees 00 minutes 00 seconds East (assumed bearing along the South Line of the SW1/4 of said Section 11 for a distance of 321.16 feet, thence North 07 degrees 47 minutes 59 seconds West for a distance of 33.31 feet to the Southwest Corner of Outlot 16 in the Kniss Outlot Annex to the City of Luverne, Minnesota, thence North 90 degrees 00 minutes 00 seconds East along the South Line of said Outlot 16 for a distance of 200 feet, thence North 07 degrees 47 minutes 59 seconds West along a line parallel with the West Line of said Outlot 16 for a distance of 300 feet to the point of beginning, thence North 07 degrees 47 minutes 59 seconds West along a line parallel with the West Line a distance of 70 feet; thence North 90 degrees 00 minutes 00 seconds West for a distance of 96 feet; thence South 07 degrees 47 minutes 59 seconds East along a line parallel with the West Line of said Outlot 16 for a distance of 70 feet; thence North 90 degrees 00 minutes 00 seconds East for a distance of 96 feet to the point of beginning.

Above-described property is subject to a perpetual access easement over and across the Westerly 30 feet of above-described premises; and also a perpetual right-of-way easement in the E.20 feet of the above-described premises for the purpose of serving said Outlot 16 with utilities.

(7-19, 7-26, 8-2)

Read the  
Public Notices online  
[www.star-herald.com](http://www.star-herald.com)

Sports Scores & Stories updated daily.  
[www.star-herald.com](http://www.star-herald.com)



# Star Herald CLASSIFIEDS

Page 6B July 19, 2018

## EMPLOYMENT

A&B Pressure Washing, Inc. is now taking applications for a dedicated employee. For more information and to set up an interview call 507-920-5910 and leave a message. (7.15-8.2)

Full-time Police Officer. The City of Adrian is accepting applications for a full-time Police Officer. Applications and vacancy announcement available at Adrian City Hall, 209 Maine Ave, Suite 106 Adrian, MN 56110 and on our web site [www.adrian.govoffice2.com](http://www.adrian.govoffice2.com) EOE Position open until filled. (7.1-7.19)

## EMPLOYMENT

Public Works Employee. The City of Adrian is accepting applications until 4:00 p.m. on Friday, July 20, 2018 for a full-time Public Works Employee. Class D Wastewater license and/or Class C Water license preferred. Applicants who are willing to be trained will be considered. Applications and vacancy announcement available at Adrian City Hall, 209 Maine Ave, Suite 106 Adrian, MN 56110 and on our web site [www.adrian.govoffice2.com](http://www.adrian.govoffice2.com) EOE (7.8-7.19)

## EMPLOYMENT

**Owatonna Construction Engineer**

Opportunity to provide contract administration and direct engineering supervision on bridge and/or highway construction projects to ensure compliance with contract provisions. For specific position requirements, salary and on-line application thru 7/27/18 go to <http://mn.gov/mmb/careers> and apply to Job ID 24656. EOE

Contact Lena at [lena.garcia@state.mn.us](mailto:lena.garcia@state.mn.us) or 651-366-3406

## EMPLOYMENT

**SE MN JOB OPPORTUNITIES**

**Bridge Maintenance Worker** in Owatonna, Rochester & Winona

**Construction Inspectors** in Owatonna, Rochester & Winona

For specific position requirements, salary and on-line application go to <http://mn.gov/mmb/careers> and enter Job ID 24502 & 23281. EOE

Contact Lena at [lena.garcia@state.mn.us](mailto:lena.garcia@state.mn.us) or 651-366-3406

## Buffalo Ridge Insurance

Buffalo Ridge Insurance is looking to add an insurance professional to their 7 member team. Provide a resume in person or email to [info@buffaloridgeins.com](mailto:info@buffaloridgeins.com)

**Qualifications:**  
Professional  
Detail oriented  
Customer focused  
Proficient computer skills



The Gas Stop, owns and operates Holiday branded convenience Stores across South Dakota and Minnesota. The Gas Stop is a leader in the convenience store industry. We are committed to providing top tier fuel along with an extensive product selection, great value, and friendly, helpful service. **The Gas Stop Holiday in Luverne, MN** is currently accepting applications for immediate openings:

- Full-Time and Part-Time Sales Associates - \$11-\$12 an hour

Working at The Gas Stop isn't just a job — it's a full customer service experience. You will receive Top Pay in a Family Friendly Atmosphere! The Gas Stop offers competitive wages, discount on gas and an excellent benefits program. Satisfying your needs every day, wherever you're going, we're on your way. Jump start your career with an industry leader. Apply now to ensure this opportunity doesn't pass you by!

Apply at our store or on-line at  
[www.GasStop.com](http://www.GasStop.com)  
915 S. Kniss Ave. Luverne, MN

Daily News.  
[Star-Herald.com](http://Star-Herald.com)



mcAn

Minnesota Classified Advertising Network



## HELP WANTED

**CFS, MANKATO, MINNESOTA**  
seeking qualified CEO. Successful 35 location full service Co-op, grain, agronomy, feed and energy with sales of \$560 million. Job: <https://tinyurl.com/y8rfe9td> David.Lemmon@chsinc.com 320/219-0270

## HELP WANTED - SKILLED TRADE

### TIG WELDERS!

Small, well established business needs motivated welder/fitters for traveling dairy processing equipment installation. FT, 9 on/5 off. Company paid travel, lodging, per diem, more. Information: JPeterson.PWS@outlook.com

## FARM EQUIPMENT

### GOT LAND?

Our hunters will pay top \$\$\$ to hunt your land. Call for a free info packet & quote. 866/309-1507 [www.BaseCampLeasing.com](http://www.BaseCampLeasing.com)

## WANTED TO BUY

### MOTORCYCLES WANTED

Japanese 1970's & British 1970's. Two-stroke & four-stroke. Cash paid! Easy trailer pickup. Call today: 612/720-2142

## MISCELLANEOUS

### LUNG CANCER CLASS ACTION

Were you an industrial or construction tradesman and recently diagnosed with lung cancer? You and your family may be entitled to a significant cash award. Call 844/238-0340 for your risk-free consultation.

### Your ad here!

Only \$279 to reach a statewide audience of 3 million readers!!! **1-800-279-2979**

### DIRECTV SELECT PACKAGE

Over 150 channels, only \$35/month (for 12 mos.) Order now! Get a \$100 AT&T Visa Rewards gift card (some restrictions apply) Call 844/279-6018

## GARAGE SALES

Multi-Family Garage Sale: 110 E. 8th St in Adrian. Friday July 20: 9 a.m. to 7 p.m. Saturday July 21: 9 a.m. to 3:30 p.m. Men and Women's clothing, household items, dishes, cookware and lots of misc. items. (7.15-7.19)

## FOR SALE

For Sale: 27ft 1997 Terri 5th wheel camper with one slide out. Please call 507-220-0513. (7.15-8.2)

For Sale: Electric scooter, good condition. \$1,500. Call 507-220-1486. (7.1-7.19)

## MISCELLANEOUS

HAVE A UNIQUE SERVICE OR BUSINESS? Get the word out to over 1.4 million households. Call WIDE AREA CLASSIFIEDS today, 507-359-7326. (tc)

## RENTALS

Apartment for rent: two-bedroom apartment in Hills, MN. Just 15 minutes from Sioux Falls and Luverne. Owner pays all utilities except personal electric and TV. Only \$600 per month, walk out patio. No pets, no smoking. Call Al Small at 605-759-4149. (7.15-8.2)

Large apartment upstairs, downtown Luverne, utilities paid, stove and refrigerator included. References required, no pets, no smoking. Call 507-227-1589. (tc)

For Rent: one-bedroom apartment near downtown Luverne. \$290 per month. No pets. Call 605-201-6427. (tc)

Dean Christians mobile home for rent. 2 Bedrooms, 1 Bath, all appliances, sewer and water included. Call Dean at 605-366-7695 (7.19-8.5)

## Oakwood Apartments

401 Oak St., Ellsworth

### • 1 Bedroom Unit Available

Unit Available  
Water, Sewer & Garbage Included.  
Rent Based on Income  
**AVAILABLE IMMEDIATELY**  
**Van Binsbergen & Associates, Inc.**  
320-269-6640 ext. 22  
Equal Housing Opportunity

[www.vanblc.com](http://www.vanblc.com)



## CARDS OF THANKS

The family of Olive Greve would like to sincerely thank you for the expressions of sympathy upon the loss of our mother, grandmother and great grandmother. We thank Mary Jane Brown Home staff for their compassion and care, the Dingmann Funeral Home for a beautiful service and Pastor Kristi for her uplifting words and prayers. (7.15-7.19)

A heartfelt thanks to friends and family for making my 90th birthday party so special and memorable. Your cards, gifts, phone calls and best wishes were priceless. A special thanks to my daughter, Sandy, her husband, Gerald, plus Sam, Bonnie and Max for giving me such an extraordinary day.

**Buster Rust**

(7.19-7.22)

## RENTALS

## 4 Bedroom Townhouse FOR LEASE

Rock Creek Townhomes

### Handicap Accessible

\$655/mo Includes water, sewer, trash

(507) 220-0757

[LloydManagementInc.com](http://LloydManagementInc.com)

Equal Housing Opportunity

## DC STORAGE, LLC

### NEW UNITS AVAILABLE SOON!

10X15'S/10X20'S/10X40

### RESERVE NOW!

GRAND OPENING SPECIAL:  
PAY 12 MOS. GET 13 MO. FREE

**507-227-5502 OR 605-360-9770**

## Top Hat Luxury Units

2 bedroom | 1 bath  
Approx. 1,400 sq ft  
all electric

washer & dryer  
glass top stove | microwave  
refrigerator | dishwasher  
Hi-Boy toilet  
air conditioner | ceiling fans  
2" wood blinds  
water softener, we supply salt  
rev. osmosis drinking system  
garage with opener  
snow removal & gardening all done for you  
**Live Carefree!**

1 year lease  
\$695 + deposit  
If interested call Archie at 507-920-5595

## MAINTENANCE TECH NEEDED



### Are you:

- Mechanically inclined
- Self-starting
- Energetic
- Willing to work your mind & hands
- Adept at trouble shooting

Then we want you!

Due to growth we need a  
**Full-Time Maintenance Tech near Luverne, MN.**  
Willing to train the right person. For more info & to apply go to [www.pipestonesystem.com](http://www.pipestonesystem.com) or call 866-918-7378

## PIPESTONE®

### SYSTEM

Pre-employment drug testing and background screening required.

## NOW HIRING - TWO POSITIONS

\*Bill's Water: Full time customer service and installations. Must have a good driving record, plumbing experience preferred but will train.

\*Frakco's: Full time building equipment and shipping

Wages depending on experience. We offer profit-sharing, paid vacation, holiday and weekends off. Monday-Friday 8am-4:30pm

**BILL'S WATER CONDITIONING**  
**RANDON WATER SOFTENER SERVICE**  
Family owned since 1971

SERVICE • RENTAL • SALES  
Luverne: 507-283-4448 Brandon: 605-582-6585  
[www.billswater.com](http://www.billswater.com)

Email resume to [brett@frakco.com](mailto:brett@frakco.com) or pick up an application at 606 E. Dodge, Luverne



Read The **Luverne Announcer**  
**Online Edition**

[Star-Herald.com](http://Star-Herald.com)

Updated every Saturday