



# Rock County STAR HERALD

www.star-herald.com

Rock County's oldest business, printing since 1873

Thursday, March 16, 2017



Luverne firefighters Tim Walgrave (left), Eric Lammert, Derek Elbers and Matt Buntjer venture out on the Rock River ice Tuesday morning to rescue a small doe that had fallen through and appeared to be stuck. Walgrave ended up pulling the doe by her front leg atop the ice to shore. See the Star Herald Facebook page for a video clip of the event. Lori Sorenson photos/0316 deer rescue

## Firemen rescue deer from Rock River ice

Photos and text by Lori Sorenson

The Luverne Fire Department rescued a deer Tuesday morning that was hung up in the ice on the Rock River.

Fire Chief David Van Batavia said the Sheriff's Office received a call about the struggling doe just south of the railroad bridge.

It was reported to the DNR, which in turn said the local fire department would be the appropriate emergency response.

Luverne firefighters are trained for ice rescues and several ventured onto the ice to assess the situation.

With the ladder truck still en route, fireman Tim Walgrave took hold of the doe's front leg and dragged her atop the ice and safely to shore.

Van Batavia said at first it wasn't clear if the doe would survive her episode in icy waters.

"We threw a couple blankets on her and left," he said. "We figured she'd calm down better if we weren't there."

He said city crews who were unloading snow in that area checked on her and noticed her first on her front knees.

Then, when approached, he said she got up and ran off. "Look out for her on the road," Van Batavia said. "She's on the run."

## 'Mounds Basin' to be restored

Walk bridge over scenic rapids on east end to connect north shore trail with paved path

By Lori Sorenson

The lake and beach at the Blue Mounds State Park will not be replaced, but there are new recreational opportunities planned instead.

This was the primary focus a March 9 Park Advisory Board meeting in Luverne.

The Lower Lake drained in June 2014 after floodwaters blew out the concrete spillway around the 80-year-old dam.

In conversations about repairing damage, the DNR opted to return the 20-acre "Mounds Basin" to its original natural state, according to Steve Hennessy of the DNR parks and trails division.

"We need to get in the habit of calling it a basin restoration," he said at Thursday's meeting.

"It's not just about the stream and it's about more than just the dam."

He shared a 2015 aerial photo of the drained lake area with Mound Creek cutting through heavy silt where vegetation — both native and non-native — have grown.

He compared this post-flood photo to a 1936 aerial photo of the basin prior to the dam construction.

It showed a grassy wetland surrounding a widely meandering creek.

Hennessy said this was nature's way of slowing and filtering water through the basin as it made its way to the Rock River.

In addition to preventing erosion, it provided critical habitat for native grasses and water species.

He then shared a drawing of future restoration plans for the basin. It showed a similar meandering stream with oxbows that were prevalent in the pre-dam basin.

"These oxbows are really important for habitat," Hennessy said.

Oxbows are off-stream inlets that fill in with sedimentation and provide quieter waters for safe havens for wildlife.

'Mounds Basin' restoration/5A



Mavis Fodness Photo/0316 Maple Syrup

Grace Ingebretsen turns the hand drill into a maple tree Saturday afternoon at the Blue Mounds State Park. She and her brother, Leif (pictured with her), were among 30 people who attended a program about making maple syrup and "tapping" a maple tree.

## How sweet it is

Families learn about tapping local maple trees

By Mavis Fodness

While it was too cold for maple syrup to flow Saturday, the winter weather didn't stop 30-some people from attending a tree-tapping class at the Blue Mounds State Park.

Master Naturalist Jeanne Prekker shared the science and history behind maple syrup collection.

Those who wanted hands-on experience were able to "tap" a maple tree and later taste some of Prekker's already prepared homemade syrup.

Environmental education is a passion for Prekker, who has tapped the maple trees in her Luverne backyard for several years.

She said gathering syrup in Rock County is not as popular as it is on the East Coast, such as in Vermont.

"We are the farthest west and farthest south



to tap maples," Prekker said.

Mid-February through March is the optimal time to gather syrup, when the daytime temperatures rise above freezing and nighttime temperatures drop below 32 degrees.

Taps should be located on the southwest side of the tree, where the sun can activate the flow of sap. The taps should be from 2 to 4 feet above the ground.

"We don't have to tap very deep into the tree," Prekker said.

Using a hand drill, Prekker showed participants how to penetrate through the outer bark into the phloem layer. The phloem carries sap up to the tree's branches and leaves during the day and to the roots at night.

Making maple syrup/continued on page 8A

## More wind turbines planned for west side of county

By Lori Sorenson

Up to 50 new wind turbines may go up along the western edge of Springwater Township if easements can be secured in the coming months.

Rock County Commissioner Stan Williamson is among dozens of landowners who were contacted about leasing ground for Walleye Wind, LLC.

"This could be a really good thing for Rock County if this happens," Williamson said, referring to an improved tax base for the county and income for local landowners.

In northern Rock County, Rosedell, Denver and Springwater townships are benefiting from nearly \$900,000 in annual wind production taxes generated from the 119-turbine farm completed in 2012.

Walleye Wind is a project of Renewable Energy Systems in Minneapolis, which is looking to expand in western Rock County after buying the recently bankrupt MinWind Energy near Beaver Creek.

RES owns seven of the nine former MinWind turbines and is looking to build on that infrastructure with new turbines to the north.

"The idea is to have all the turbines in the project use one connection to the grid," said Peter Rood, vice president of development for RES in Minneapolis.

He said the new turbines can't infringe on the Prairie Rose Wind Farm turbines in the Hardwick area and northwestern Rock County, so the focus is on potential ground in Springwater Township.

The Walleye Wind farm will be less than half the size of Prairie Rose.

Rock County Commissioners approved a permit on March 7 for construction of a metering tower to measure wind speed and direction in western Rock County.

It will be a tool to determine the feasibility of a wind project in the area.

The 190-foot-tall steel tower will be constructed in Section 20 of Springwater Township on a piece of land Mark Gath is leasing to RES for the anticipated 2-year monitoring

Walleye Wind/continued on 2A

Volume 142, Number 11

Luverne, MN 56156  
USPS 468-040



The Star Herald is Rock County's oldest business, documenting the news of its citizens since 1873



Article 11: Luverne is an agricultural community, from its founding through today

This is the 11th in a series that shares the rich history of Luverne as it celebrates 150 years. This information comes from local historians and Star Herald archives:

The first settlers to Rock County saw nothing but prairie grass when they arrived in the mid-1860s. With the federal Homestead Act, many adventure seekers saw opportunity on the prairie. If they could live on the land for five years, the land would be theirs. Early settlers were looking for fertile soil to plant their

Luverne celebrates 150 years/continued on page 8A

This week's moment in time is sponsored by:



150 years for Luverne... 63 years of pancakes for our customers, from Luverne Farm Store

## COMMUNITY CALENDAR

### Meetings

**Hardwick Goal Seekers** meet every Monday in Hardwick City Hall for the purpose of support and encouragement for weight loss journeys. Weigh-in begins at 6 p.m., and the meeting starts at 6:30 p.m. Call Glenda, 449-0568, with questions.

**Narcotics Anonymous** will meet every Thursday evening at 6:30 p.m. at the Steen Reformed Church. Contact Robert for more information 507-329-2642.

**Women's Alcoholics Anonymous** meets at 8 p.m. Mondays in the United Methodist Church.

**Al-Anon** meets from 6:30 to 7:30 p.m. Wednesdays in the Buffalo Ridge Meeting Room (lower level) at the Sanford Medical Center in Luverne. Call Stephanie at 507-449-1246.

**Narcotics Anonymous** meets at 7 p.m. Fridays and for basic text study at 7:30 p.m. Tuesdays in the basement of St. Catherine Catholic Rectory, 203 E. Brown St., Luverne. Use east door. For more information call 507-220-0137.

**Alcoholics Anonymous** meets at 8 p.m. Wednesdays and Saturdays in the United Methodist Church, Luverne. Call 605-321-4324.

**Alcoholics Anonymous and Al-Anon** meet from 8 to 9 p.m. every Tuesday in Runals Memorial Hall, Edgerton. Call Naomi, 507-215-2956, with questions.

### Community Theatre March 16-18

The Hills Community Theater will perform "A Decal Point of View," a comedy written and directed by Nancy Kraayenhof, March 16-18 at the American Legion in Hills. To reserve tickets call 507-962-3791. Dinner theater seats are \$25. Doors open at 6:15 p.m. with a buffet dinner by Tony's Catering at 6:30 p.m. Show starts at 7:30 p.m. Play only seating for \$15 is at 7:15 p.m. for each show.

### Monthly Food Ministry March 16

The Monthly Food Ministry, sponsored by New Life Celebration Church, will be from 5-6 p.m. Thursday, March 16, at the Luverne Senior Center. Come for fresh produce, bread and meat. Children will be asked to wait outside. Call Gloria at 283-4366 with questions.

### Attend March 16 food co-op meeting

Kim Rockman, Roni Feit and others are considering opening a food co-op in Luverne to provide food, wellness products, classes and outreach. A public input meeting is at 6:30 p.m. Thursday, March 16, in Hilger Commons, 215 N. Cedar in Luverne. Call 507-353-0041 kimberlyelizabeth@live.com or 605-351-3522 ronifeit@gmail.com.

### Blue Ribbon Gardening

Master Gardener Tim Olsen will offer information to grow champion vegetables at a 3-hour class Thursday, March 23. Fee is \$20. Call 283-4724 for more information.

### Author to speak at library

The Rock County Community Library will host author Jeanine Fricke from Lake Benton from 1 to 2 p.m. Saturday, March 18, at the library. She will talk about her mystery novel, "Into the Dark Forest." Her self-published book will be available for purchase at the event. The library also has a copy in its lending library. For more information, contact library director Serena Gutnik at 507-449-5040.

### Rock the Edge youth event March 19

Students in grades 7-12 are invited to a fun, faith-filled evening on dating done right, by national speakers Craig and Molly Sanborn, scheduled for 7 p.m. Sunday, March 19, at Grand Prairie Events. Doors open at 6 p.m. and the community youth praise band plays at 6:30 p.m. Free admission and door prizes. Call 507-283-9664 with questions.

### Bloodmobile in Luverne March 20

Sanford Luverne will host a blood drive from 11 a.m. to 1:30 p.m. and from 3-6 p.m. on Monday, March 20.

Donors must be at least 17 years old, or 16 with parental consent, weigh 110 pounds or more, and be in good general health. The process takes 30-35 minutes.

To set up an appointment, call 283-2321. Walk-ins are also welcome.

### Register by March 20 for summer ball

Families interested in summer baseball, softball and T-ball for players in grades K-12 (for the 2016-17 school year) should register with Luverne Community Education by March 20. Call 283-4724.



Each structure will have two attached homes, starting at \$185,000 each, with a 700 square-foot heated garage on each end.

## Twin homes planned on lots near hospital

By Lori Sorenson

A local developer is building a set of twin homes on Christensen Drive east of the hospital that will help fill a need for senior housing in Luverne.

Rich Dreckman purchased two lots from the city of Luverne last fall, and he's working with local contractor Richard Conklin to put a twin home on each lot.

They're planning a spring groundbreaking with the first of four homes completed in July.

Dreckman said he has

bought and sold homes in the past, but he was inspired to build these twin homes based on Luverne's housing study that shows a need for more senior housing.

"They're geared for retirees or empty nesters," Dreckman said, adding that snow removal, mowing and lawn maintenance will be covered through a typical homeowner association setup.

Each structure will have two attached homes, starting at \$185,000 each, with a garage on each end.

The 1,066 square feet of

living space will feature vaulted ceilings, two bedrooms and one bathroom in each home with a 700-square-foot attached heated garage all on one level — no steps for entry.

They will be built on sizeable lots — 16,250 square feet — with deep backyards and south-facing porches.

"They'll have a view of the Blue Mounds to the north," Dreckman said, explaining the name of the units — Northview Twin Homes.

He said he's working with a party on one of the four units, and if it's sold before construc-

tion starts, it will be built to specifications. For example, this buyer is interested in more than one bathroom.

Both twin homes will be constructed of Structural Insulated Panels, as opposed to normal home framing. Dreckman said this makes for stronger homes — to withstand 200 mph winds — and more energy efficient.

His first advertisements will be published in the Announcer this weekend. Interested buyers can call 507-920-6424 or Remax Realty, 507-449-6111.

## Edgerton man charged with burglary

By Lori Sorenson

A 20-year-old Edgerton man is facing felony charges for his alleged role in two rural Rock County burglaries in February.

According to the criminal complaint filed Monday in Rock County District Court, Jacob James Fennema was charged with two counts of second-degree burglary for entering dwellings without consent and committing crimes.

The court document states that on Feb. 13 law enforcement responded to a report of a burglary at the rural Kenneth home of Terry Medill, who said he returned home from work that day to find his front door swinging open with signs of forced entry.

He said he was missing a 12-gauge shotgun that had been given to him by his father when he turned 16. He described it as a Springfield pump action gun and that various shells were also missing. Medill later called the Sheriff's Office to report that he discovered his prescriptions, including hydrocodone pain medication, were missing.

On Feb. 20 Rock County deputies were dispatched to a burglary investigation in northeastern Rock County at the home of Gary Baker who

said their home had been broken into while they were at church Feb. 19.

Baker said their home had been accessed with the garage door opener in his pickup and the following items were taken: \$100 cash from his wife's purse, an unknown amount of coins from a jar (the entire jar was taken) and two cups, a webcam surveillance system, a small flashlight, and a farm account credit card.

Baker said they didn't notice the items were missing until his wife went to buy groceries and discovered all her cash was gone. At that point they looked around the house and noticed other missing items.

They told law enforcement they believed someone familiar with their home had done it, and they suggested it might be Persin Shon Iron Boy, a young man they had fostered when he was placed at Southwestern Youth Services. Baker told officers he believed Iron Boy had been living with Fennema.

On March 11 deputies received a tip about a stolen shotgun that had been purchased from Fennema in Brandon.

The tip came from Fennema's former roommates who said they were expecting him

to return to their acreage to retrieve some property he'd left there when they made him move out.

The roommate said he'd bought the shotgun from Fennema to help him out because he needed money.

Law enforcement waited near the residence and arrested Fennema when he left the acreage.

According to the complaint, Fennema was taken to the Law Enforcement Center where he agreed to speak without counsel.

He admitted that he and Iron Boy and another person had broken into the Medill residence to look for money. He said they used a crow bar to get inside, and they took the shotgun and prescription medication. He also admitted to selling the shotgun and shells.

According to the criminal complaint, Fennema also admitted to burglarizing the Baker residence because Iron Boy knew how to get in. He said they took \$200 to \$300 in cash in addition to the surveillance system.

Fennema was then transported to jail, and the shotgun and ammo was later recovered.

The maximum penalty for a second-degree burglary conviction is 10 years in prison and/or a \$20,000 fine.

## Wind farm/ continued from 1A

period. The temporary tower looks like a flagpole and will be fitted with other weather data collection devices, in addition to wind measurement.

The permit expires after five years in 2022.

### About RES

RES has been active in the renewable energy industry for over 30 years.

It was founded in 1982 in England and has U.S. offices in Minnesota, Colorado, Connecticut, Texas and California.

In 2001 the company built the then-largest wind farm in the world at King Mountain in Texas, using 214 bonus turbines of 1.3-megawatt capacity.

The RES Group has since then developed and/or constructed over 100 wind farms worldwide, with more than 10 GW of capacity.

In addition, it has projects on its books totaling several thousand megawatts worldwide, at various stages of development.



# Dial-A-Specialist

## Your One Stop Guide to Local Businesses

 <p><b>ROCK COUNTY CHIROPRACTIC</b> • Men, Women &amp; Children's Health • Custom Orthotics • Kinesiotape • Athletic Care • Massage Therapy • Work &amp; Auto Injuries • Postural Restoration WWW.ROCKCOUNTYCHIROPRACTIC.COM 283-2561 • 103 E. MAIN, LUVERNE Monday 7:30 a.m. - 6 p.m. • Tuesday 7:30 a.m. - 3 p.m. Wednesday 7:30 a.m. - 6 p.m. • Thursday 7:30 a.m. - 1 p.m. Friday 7:30 a.m. - 5 p.m.</p> <p><b>Most Insurance Accepted</b></p> <p>• <b>Chiropractic</b></p>	<p>Rock County <b>STAR HERALD</b> Luverne <b>ANNOUNCER</b></p>  <p><b>Chantel Connell</b> Sales Representative 117 W. Main, Luverne, MN <b>507-283-2333</b></p>  <p><b>Rick Peterson</b> General Manager</p> <p>• <b>Advertising</b></p>	<p><b>LUVERNE HEALTH &amp; WELLNESS</b> Codie Zeutenhorst, D.C., CAC</p>  <ul style="list-style-type: none"> <li>✓ Acupuncture</li> <li>✓ Chiropractic Care</li> <li>✓ Family Care</li> <li>✓ Sports Injuries</li> <li>✓ Kinesiotape</li> <li>✓ Auto &amp; Work Injuries</li> </ul> <p><b>Acupuncture and Massage Available</b> Kris Van Der Brink M.T. &amp; Amy Rosales M.T. <b>507.449.4400</b> www.luvernechiro.com 109 S. Freeman Ave.   Luverne, MN</p> <p>• <b>Chiropractic</b></p>	<p><b>COMRAY COMPUTERS</b> Computer Repair and System Builder</p>  <p><b>Ray Hansen</b> 1726 140th Ave., Luverne, MN 56156 <b>507-669-2621</b> comraycom@gmail.com</p> <p>• <b>Computer</b></p>
 <p><b>Rock County EYE CLINIC</b> <b>507-283-2345</b> 102 N. Freeman Ave. Luverne, Minnesota</p> <p>• <b>Eye</b></p>	 <p><b>Papik MOTORS</b> 1-90 Luverne, MN Box 536 • 801 West Commerce Road Luverne, MN 56156</p> <p>(507) 283-9171 (800) 634-7701 www.papik.com</p> <p><b>Certified Used Vehicles</b> Certified Pre-owned Jeep</p> <p>• <b>Automotive</b></p>	<p><b>Luverne MINNESOTA City Offices</b> <i>Love the life!</i></p> <p>PO Box 659, Luverne, MN 56156 507-449-2388 (24 hour voice mail) <b>www.cityofluverne.org</b></p> <p>• <b>City</b></p>	<p><b>Dakota Land Surveying and Engineering, Inc.</b></p>  <p><b>Steven B. Kor</b> Professional Engineer Registered Land Surveyor</p> <p>2000 W. 42nd Street, Suite B-6 Sioux Falls, SD 57105 605-334-4882 605-334-5745 Fax</p> <p>506 Almar Luverne, MN 56156 507-283-3803 steve.dis@midconetwork.com</p> <p>• <b>Land Surveying</b></p>

# Feedlot questions arise at hearing

By Mavis Fodness

Rock County Commissioners approved seven conditional use permits at their March 7 meeting, two of which prompted extra discussion among the five-member board.

Land Management Director Eric Hartman presented the seven applications, all recommended for approval by the Rock County Planning Commission at their public hearings Feb. 27.

David Hamann sought approval to expand his existing feedlot in Luverne Township from 282.5 animal units to 750. The permit was needed because the expansion was more than 250 animal units and was within a quarter of a mile of an existing residence.

Hamann's application proposed eliminating the existing confinement buildings and open feed lot for his current feeder pig operation, placing all pigs in a new 101-by-192-foot confinement barn. The new building would house 2,400 head of finishing swine.

Harold Stroeh, who lives southwest of the new feedlot and within a quarter of a mile, attended the public hearing.

Hamann said he talked with neighbors about his expansion plans.

Hamann said a location by an existing well near the current feedlots was the best place to locate the new building. He thought his neighbors showed no objection to his proposal.

"I don't want it across from my house," Stroeh said at the hearing. "It's going to stink us out of our house."

Hamann said the new confinement would improve his manure management and would lessen the smell.

Instead of spreading manure on top of his fields several times a year, Hamann would be able to knife manure into the soil once a year.

"I thought I was making a big improvement in eliminating manure running across my yard," Hamann said.

Commissioners agreed but stipulated manure odor be alleviated by trees planted on the barn's west side.

### Repeated truck traffic concern for gravel road

A neighbor also spoke

against Duininc Inc.'s request to operate a temporary hot mix asphalt plant in Battle Plain Township.

At the Feb. 27 public hearing, Mavis Fodness requested a written road maintenance agreement be shown at the time of final permit approval.

She said she asked to see the agreement last year, but township officials did not produce one.

Duininc representative Jason VerSteeg said an agreement exists with township officials and he has receipts showing gravel has been placed on the mile stretch of 170<sup>th</sup> Avenue used by his company to access the pit.

A road maintenance agreement accompanied the permit prior to the March 7 commissioners' approval.

Commissioners also approved five other conditional use permits:

- Duininc Inc. to operate a temporary hot mix asphalt plant in Denver Township.

- Greg Kracht to replace an existing cattle confinement facility in Magnolia Township damaged in a recent storm event. The replacement would expand the existing 1,830 head cattle finishing facility with a larger barn. This would increase animal units by 730 to 2,560.

- Lewis and Clark Regional Rural Water System to construct a four-million-gallon above-ground storage tank in Clinton Township.

- Lewis and Clark to construct and operate a pumping station in Luverne Township.

- Walleye Wind LLC to place a temporary 60-meter tall meteorological/wind monitoring tower in Springwater Township.

### Home variance granted

The county's Board of Adjustment approved a variance request by Loren and Bonita Veldkamp in Rosedell Township at the Feb. 27 public hearing.

The Veldkamps proposed replacing the basement foundation and expanding their existing home. The expansion would be west and east of the existing structure.

The variance allows the new structures no closer than 90 feet from the center of 20<sup>th</sup> Avenue, reducing the current setback standard from 130 feet.



Mavis Fodness Photo/0316 Spring Play 2017

Luverne High School presents its annual spring play March 24 and 25 in the high school auditorium. Cast for "Buckshot and Blossoms" includes (front row from left) Itzel Soto, Julia Ferguson, Brianna Jonas, Ashlee Boltjes, Hannah Ehlers, Alexa Chesley, Anita Cole-Kraty, (middle) Donald Guay, Jocey Cazares, Doug Rozeboom, Josh Schoneman, Gryphon Noerenberg, Jordan Winter, Mela Jarchow, (back) Quinn Graber, Jake Henckel, Logan Bosch, Annabell Petronek, Emilee Bartels, Megan Rogers, Aiden Bartels, Arham Ahanaf and Mark McLaughlin.

# High school production of 'Buckshot and Blossoms' coming March 24-25

By Mavis Fodness

Fans of Saturday morning television westerns will enjoy Luverne High School's spring play "Buckshot and Blossoms," by Tim Kelly.

The 21-member cast will perform the 90-minute production at 7:30 p.m. Friday, March 24, and Saturday, March 25. (Note the date change from the school calendar.)

Sharon Boltjes begins her seventh year as director. She said she chose a play that has a "true Western beat" of the good guys versus bad guys.

The beat was commonly used in television westerns such as "The Roy Rogers Show," "Annie Oakley" and "Gunsmoke."

Because toy guys are used in the production, Boltjes said she received a special exception from the school's no weapons policy from administrators.

The 90-minute two-act play is set in the 1880s Old West at the Trail Dust Hotel in Trail Dust, Arizona Territory.

The villainous Whip Lash (played by Donald Ray) is the head of the Whip Lash Gang.

Whip Lash and his gang members Hopalot and Alibi (Jocey Cazares and Doug Rozeboom) are concocting nasty schemes to rob citizens, while his partner-in-crime Pearl of Pecos (Itzel Soto) deals in marked cards.

As the bad guys begin threatening mine owner Annabelle Rawlins (Ashlee Boltjes), she begins a campaign against guns within the town. New sheriff Johnny Wright (Aidan Bartels) arrives in town. He is known as "The Fastest Gun in the West."

Climaxing the play is the Durango Kid (Gryphon Noerenberg), the meanest gunslinger, and he forces a duel in the hotel lobby against the sheriff. The duel ends without a single shot being fired.

Other students portraying characters in the play include Julia Ferguson, Bethany Starling, Gracie Rozeboom, Josh Schoneman, Alexa Chesley, Cheyenne Albers, Hannah Ehlers, Jordan Winter, Anita Cole-Kraty, Mark McLaughlin, Arham Ahanaf, Brianna Jonas, Anita Cole-Kraty and Megan Rogers.

Mela Jarchow is the production's student director. Handling the lights and sound are Jake Henckel and Quinn Graber. Backstage are Logan Bosch, Annabell Petronek and Adriana Gonzalez. Itzel Soto and Allysa Valesquez are in charge of makeup.

Admission is \$6 for adults and \$4 for students. Activity passes will be accepted.

Concessions will be available before the play as well as during the intermission.

# Rock County Rural Water earns 2017 Source Water Protection Award



Rock County Rural Water board member Del Walraven (center) accepts the award in St. Paul March 8. He's with Steve Weir (left) and Steve Burkland, national and state water representatives.

By Lori Sorenson

Rock County Rural Water is the winner of the 2017 Source Water Protection Award, and local rural water board members were recognized at the March 8 Minnesota Rural Water Conference in St. Paul.

"We appreciate your efforts on behalf of protecting your drinking water source," Steve Robertson said.

Robertson is supervisor of Minnesota's Source Water Protection for the Minnesota Department of Health. He congratulated Rock County's Rural Water Board members.

They include Paul Heronimus, Stan Williamson, Lila Bauer, Del Walraven, Vern Van De Berg, Wayne Thompson, Matt Boeve and Paul Arends.

Williamson said achievements in local water quality are directly tied to farming conservation practices in the rural water wellheads.

"It's plain as day down there," he said. "These guys put nitrogen on and if it rains, the nitrogen levels in the water go through the roof."

Brent Hoffmann, Rock County Rural Water Supervisor, said farm conservation practices — such as cover crops and grass buffers — are so important.

He praised local producer Jim Ladd for his role in protecting water sources.

Ladd's farm was recently recognized by the Minnesota Agriculture Water Quality Certification Program.

He farms approximately 115 acres within the Rock County Rural Water Wellhead Protection Area, and Hoffmann said Rural Water wells near Ladd's farm ground consistently test very low in nitrate and nitrogen levels.

Ladd is the third farmer in Rock County to earn the Water Quality Certification through Minnesota's Ag Water Quality Certification Program.

## Dining & Entertainment

**Palace Theatre**  
Downtown Luverne

"EMOTIONAL, IMMERSIVE AND INSIGHTFUL"

RABBIT KIDS

A FILM BY KEVIN FULTON & LOU PIPE

FRI., MAR. 17 - 7 P.M.

Teacher tickets are \$5 with school ID or teaching certificate

Check our web site for updates  
[www.palacetheatre.us](http://www.palacetheatre.us)

Find us on Facebook

THURSDAY, MARCH 16

PALACE THEATRE

"Manchester by the Sea"  
2PM

Afternoon Escape  
Admission is \$5

SPONSORED BY: & Dave Deragisch, State Farm agent

Please join us as we celebrate  
the Holtkamp Pipe Organ

Sunday, March 19 | 3pm

St. Adrian Catholic Church  
Adrian, MN

Featured recitalist will be Marilyn Schempp, Principal Organist at Our Savior Lutheran Church and faculty member at Augustana University, Sioux Falls, SD. There will be a free will offering to support the recital series.

512 Maine Ave, Adrian

(elevator located on the north side of church)

The Blue Mound Figure Skaters proudly present their 25th Annual Spring Ice Show

LIFE

BLUE MOUND FIGURE SKATERS

MARCH 24 AT 7PM  
MARCH 25 AT 7PM

at the Blue Mound Ice Arena in Luverne, MN

ADMISSION:

\$3.50 Students (ages 5-18yrs)      Tickets available at the door.

\$7 Adults

Come and join us for an evening of figure skating entertainment as local skaters of all ages perform to musical favorites and showcase our local figure skating talent.

## Dreaming about summer activities during a March snow storm

I'm hoping Sunday was the last snow day of the winter.

Don't get me wrong; it was a perfect day for a snow day. I didn't have to be anywhere, I made chili, and there was plenty of basketball on TV.

This is the last week of the third quarter at school, so I had enough correcting to do to fill the whole day, plus this column to write. And basketball to watch.

This time of year, snow falling on the weekend is actually a good thing. Any more missed school days and we'll be going into June.

We did get a late start on Monday, the first workday after losing an hour of sleep due to the spring time change. That was sure nice.

It was definitely odd, though, to have it be light out until 8 p.m. with snow on the ground and still falling.

Overall, I just couldn't get into the normal, relaxing snow day routine.

Maybe it was the long hours of daylight. Or the fact that it was 70 degrees last week.

Maybe it was because the fourth quarter of the school year starts next week or because JJ's is open.

Or it could be because the state hockey tournament, and the all hockey hair team video, are both done for the year.

No matter the reason, my thoughts and energy were focused more on summer than snow.

Instead of spending my free Sunday doing lesson plans or correcting papers, I spent my time planning my summer, even though it's eleven weeks away.

I found myself researching possible summer institutes to attend, looking at the Twins' schedule, and planning a couple of long weekend getaways.

I sent a text to John Rittenhouse to see which weeks he'd be on vacation and I'd be trying to be a substitute sports editor.

I sent an email to request in-



### IN OTHER WORDS

By Jason Berghorst, reporter

*By the time I finished shoveling my driveway and finally started typing this column (after it FINALLY got dark), I didn't feel too bad about the way I spent much of my snow day.*

formation about a national professional development opportunity I plan to apply for and even started the application.

I started writing events on my calendar's June, July and August pages. I spent way more time thinking about three months from now than preparing for the next five days.

By the time I finished shoveling my driveway and finally started typing this column (after it FINALLY got dark), I didn't feel too bad about the way I spent much of my snow day.

It's good to plan ahead and it feels great to have things to look forward to.

I like to think the time I spent getting excited for summer will make me more focused and productive in the week again.

At least it'd better, because I sure have a lot to do this week since I didn't do any of it on Sunday.

And if that plan doesn't work, I'll know better next time.

It's only mid-March. There may very well be at least one more snow day.

## It's Sunshine Week. Observe the occasion by source checking your online 'news'

July 4, 1776, was the day America declared its independence, but Dec. 15, 1791, was the day we declared our freedom.

It was on that day that the 13 former British colonies ratified the Bill of Rights, including the First Amendment. Our right to speak out about the government was enshrined in law.

In the 1960s, the federal Freedom of Information Act and similar state laws made it clear that government has an obligation to be open and transparent.

But it's been hard work defending these rights.

This week is Sunshine Week, a national celebration of government transparency and openness.

At a time when our president and his "alternative facts" have waged war on the press, there's never been a more important time to assert these First Amendment rights.

We all need to stand up for democracy, but if it weren't for journalists, people — like former President Nixon in 1964 — would get away with crimes.

Thanks to a team of Boston Globe reporters, evidence of abuse within the Catholic Church was brought to light in 2002.

Thanks to Washington Post reporters, stories of mistreatment of veterans in the VA were brought to

light in 2007 and veterans suffering from mental illness finally received care they needed.

We're really lucky that you don't have to be a hero to be a journalist in America. We have laws here that protect journalists and protect the rights of citizens who seek answers from public officials.

In countries where the press is seen as the enemy, journalists are forced to be heroes, often dying in the fight for information.

Since 1992, over 1,200 journalists have been killed, and over 250 are currently imprisoned in countries like Russia and China.

Journalists aren't the enemy of the American people. In fact, we're the last resort for an American population vulnerable to what could be a dictatorial and authoritarian-inclined president.

Consider this: The No. 1 priority of a dictator coming into power is to seize control of the media.

Today this is easier than ever

### STAR HERALD EDITORIAL

before, thanks to social media and the rise of "news" sites claiming to be authentic: "ABCnews.com.co," "usatoday.com.co," "washingtonpost.com.co" and "The Boston Tribune."

They look legitimate and have a "newsy" voice, but they're created for the sole purpose of misleading readers for political gain.

Not surprisingly, many of these popped up during the 2016 U.S. presidential election.

Jestin Coler, founder of many of these made-up "news" sites, told the Columbia Journalism Review how easy it really is:

"When it comes to the fake stuff, you really want it to be red meat [...] It doesn't have to be offensive. It doesn't have to be outrageous. It doesn't have to be anything other than just giving them what they already wanted to hear."

Please folks. Be critical readers. Check sources. Seek truth. Especially when it involves our government and our right to information.



## Trash is more annoying than flashing stoplights

I don't know whose idea it was to dig a hole in the Sharkee's parking lot, then knock a hole in the basement wall to gain access to the inside with a bobcat, but that was some serious MacGyvering.

If you're like me (and sad for you if you are), I couldn't help but wonder why it was taking so long to fix the signal lights at the intersection of Highway 75 and Main last week. Well, as it turns out, there seemed to be a bit of miscommunication of notification among the concerned parties involved in getting the lights fixed.

What that last sentence means is that once the right person found out the lights weren't working properly, Mr. Fixit was dispatched to the site. Apparently whatever needed to be replaced to fix the problem needed to be ordered, thus the delay.

Now on to something that has really been bothering me, and frankly I can't stand it anymore.

I walk the paths at Schoneman Park south of town nearly every day throughout the winter and in the early spring. The amount of trash that I have



### FOR WHAT IT'S WORTH

By Rick Peterson, General Manager  
Tollefson Publishing

to pick up every day that others leave behind has gotten out of control.

I don't know if the person that seems to really like the sausage, biscuits and gravy from Casey's is just lazy or is Rock County's biggest litterbug, but is it really that hard to throw your plastic container and fork into one of the five garbage bins out there?

The One Day Slob award goes to the person who enjoyed the chicken wings and three containers of dipping sauce from Godfather's. This litter pig just threw the box and gnawed on chicken bones and the dipping sauce in the middle of the parking lot.

I understand it gets windy from

time to time and some of the trash may blow in from other places, but I am pretty sure that isn't the case with all the litter — and a few times not so little — Bacardi rum bottles I've picked up this winter. Now that ice fishing is over, the rum bottles have tapered off.

On the seedier side of trash that I have seen at Schoneman Park, it would indicate the park is a safe sex gathering point. One would need a HAZMAT suit to pick up the discarded protective material.

My guess is that far more responsible people enjoy the park than the few lowlifes that have no respect for the park or others that abuse it.

## Ask a Trooper: Passing more than one vehicle is safe but not recommended

**Question:** We came upon a line of three cars all going 50 MPH. There was a long stretch of open road for several miles so I passed all three without returning to my lane. Is it legal to pass more than one vehicle at a time?

**Answer:** You can pass more than one vehicle on the left as long as it is done in a safe manner. Even though there is no law against passing more than one vehicle at a time, it is not recommended.

If it is safe to pass, make sure the pass is completed in a legal passing zone and that you are able to see and judge the speed of approaching vehicles and vehicles you are passing.

The law says the driver of a vehicle overtaking another vehicle shall pass to the left at a safe distance and not return to the right side until safely clear of the other vehicle.

In 2009, the Minnesota legislature created a passing exemption providing for an increased speed limit when passing another vehicle.

The legislature increased the speed limit by ten miles per hour over the posted speed limit when the driver:

- Is on a two-lane highway with one lane for each direction of travel.
- Is on a highway with a posted speed limit equal to or greater than 55 miles per hour.
- Is overtaking and passing another vehicle traveling in the same direction.

Once you have safely passed, you are required to reduce speed below or at the posted limit as soon as possible.

Please use good judgment and ask yourself if passing a vehicle or vehicles is really worth the risk of injury or death in the event of a crash. How much time are you really saving getting to your final destination?

If you have any questions concerning traffic-related laws or issues, send your questions to Sgt. Troy Christianson, Minnesota State Patrol, at 2900 48th Street NW, Rochester, MN 55901-5848, or reach him at Troy.Christianson@state.mn.us.

E-mail: editor@star-herald.com Web site: star-herald.com  
Phone: 507-283-2333 Fax: 507-283-2335

Published Thursdays by Tollefson Enterprises, POSTMASTER:  
Send address changes to 117 West Main, P.O. Box 837, Luverne,  
MN 56156. Periodicals postage paid at Luverne, Permit #33 and at  
additional mailing offices.

**General manager:** Rick Peterson  
**Office manager:** Deb Lusty  
**Circulation manager:** Jennifer Kor  
**Advertising:** Chantel Connell  
**Production manager:** Abbe Kolar  
**Production:** Amanda McDonald

**News staff:**  
Lori Sorenson, editor  
Mavis Fodness, reporter  
John Rittenhouse, sports editor  
Esther Frakes, copy editor  
Joseph Stearns, composition

Rock County  
**STAR HERALD**  
Rock County's newspaper since 1873

(ISSN 0889-888X)  
SUBSCRIPTION RATES

\$72 per year in Rock County; \$89 per year all other areas. Single copies \$1.25

Entire contents copyrighted by  
Tollefson Publishing Roger Tollefson, publisher

The *Star Herald* encourages letters to the editor expressing the opinions of readers and intends to print all letters. Letters not meeting the guidelines will not be printed. The *Star Herald* will verify the authenticity of all letters. Letters must have the name of the writer, a signature and address.

Unsigned letters will not be considered. The *Star Herald* will edit for grammar, spelling and clarity. Any letters containing offensive language, libelous or slanderous material, or misleading or false information will be rewritten before being published. The *Star Herald* will not publish letters written with the sole intent to advertise or serve as a thank-you. Letters with more than 300 words may be edited. The deadline for letters is Monday 10 a.m. They may be delivered or mailed to the editor, *Rock County Star Herald*, P.O. Box 837, 117 W. Main St., Luverne, Minn. 56156.

## ON THE RECORD

### Dispatch report

#### March 3

- Complainant reported hit and run.
- Complainant reported debris in roadway.
- Received incident report from Sioux Falls Police Department.
- Complainant picked up copy of order for protection on March 3 at 4 p.m.
- Complainant reported several pickups driving erratically. Deputy reported all OK.
- Complainant requested welfare check. Deputy reported all OK.

#### March 4

- Complainant requested to speak to a deputy for assistance locating subject.
- Complainant requested background for public housing application.
- Complainant reported driving complaint. Transferred to Patrol.
- Complainant reported loud banging on front door. When answered, nobody in sight. Requested a deputy drive by.
- Complainant reported doorbell ringing and noises around house and lawn. Requested check on location and deputy speak with him.

#### March 5

- Complainant reported vehicle driving erratically. Transferred to State Patrol.
- Trespassing.
- Complainant reported people smoking marijuana in hotel room.
- Complainant accidentally hit OnStar button in car. All OK.
- Complainant reported a black pickup with a red plow has been parked there for several days and blocks vision when turning.
- Complainant reported trespass on property.
- Complainant reported a man driving an ATV holding an infant, and he has a little girl on front. ATV is camouflage.

#### March 6

- Complainant came to location to update predatory offender registration.
- Complainant reported last week someone hit the big cooler that is being installed. Happened between March 1 and March 4.
- Deputy reported the stoplights are flashing red. Contacted Patrol.
- Complainant reported his soon-to-be ex took some cologne and teeth whitening trays from the house. She knows she's not supposed to be there.
- Complainant reported someone threw garbage in the recycling bin. Had a name on some garbage.
- Complainant reported a driving complaint. Transferred to Minnehaha County.
- Received information that he possibly has a stolen JD skid loader on his property.
- Complainant reported he found some stolen items in his van.
- Complainant reported he found some stolen items in his van.
- Complainant requested welfare check on subject, as he hasn't heard from her

in three days. No contact made. Does not appear to be home. Also asked Sanford Hospital Luverne to attempt to contact via phone.

#### March 7

- Complainant reported an assault on a staff member.
- Complainant reported amachine shed fire. Luverne Fire Department requested mutual aid from Beaver Creek. Ambulance on stand-by.
- Complainant reported someone lost a big piece of furniture at location. It is blocking some. Contacted city.

#### March 8

- Complainant requested welfare check on subject. Deputy reported negative contact.
- Deputy conducted roadside assist and gave subjects directions.
- Complainant reported vehicle traveling at high rate of speed. Also reported rear bumper dragging.
- Complainant reported someone put his phone number out for something, and now he is receiving a lot of harassing calls.

#### March 9

- Complainant reported a possible domestic taking place at location between subjects.
- Complainant reported a stalled vehicle at location.
- Complainant reported vehicle speeding and swerving. Notified State Patrol.
- Complainant requested background for public housing application.
- Complainant requested background check for public housing application.
- Complainant requested background check for public housing application.
- Complainant reported suspicious vehicle.
- Complainant reported theft.
- Complainant reported vehicle repossession.
- Deputy completed the escort.
- Complainant reported husband won't let her leave. Verbal only.
- Complainant reported commercial burglary alarm at location. Doors are secure but there is an alarm going off inside. Unable to contact key holder.

In addition, officers responded to 4 motor vehicle accidents, 1 vehicle in ditch, 1 deer accident, 2 transports, 3 funeral escorts, 31 traffic stops, 14 ambulance runs, 12 paper services, 11 animal complaints, 1 false alarm, 2 fingerprint requests, 7 log/alarm sheets, 5 drug court tests, 3 abandoned 911 calls, 7 reports from SWHHS, and issued 3 purchase/carry permits and 12 burn permits.

**Come & Go Baby Shower**  
**COURTNEY GONNERMAN**  
 SAT. March 18  
 10 a.m. - 1 p.m.  
 Grace Lutheran Church, Luverne  
 registered at Target, Babies R' Us, Shopko Luverne

## 'Mounds Basin' to be restored/continued from page 1A

### Walk bridge to connect north and south trails

The 1936 black-and-white image showed a railroad berm on the east end with a bridge crossing the waterway.

Hennessy said the berm of the destroyed dam will be used to secure an 80-foot-long by 12-foot-wide steel bridge.

It will have a concrete deck wide enough to accommodate small state park vehicles.

"This will improve efficiencies in park maintenance and allow better emergency access," Hennessy said. "It will be close to the bike path, so this will be a really nice stopping point for folks to rest."

He showed a photograph of Fort Ridgley State Park, which has a similar bridge. It has a rusty finish that's designed to preserve the metal. "This gives it that signature brown look," he said.

At the crossing, water is roughly 3 feet deep and 15 to 20 feet across. (The maximum depth of the restored stream will be 5 feet.)

Elevation drop at that crossing point will require placement of large boulders and riffles to send the water cascading downstream.

"It won't be a waterfall by any means," Hennessy said, "But it will be scenic, with a bit of a rapid run."

Boulders and other underwater features will be key in managing flow levels and sedimentation throughout the basin.

Blue Mounds State Park manager Chris Ingebretsen said even in drought years, water continually flows through the basin because it's fed by several springs at the base of the upper dam near the campground.

"There's always flowing water," he said.

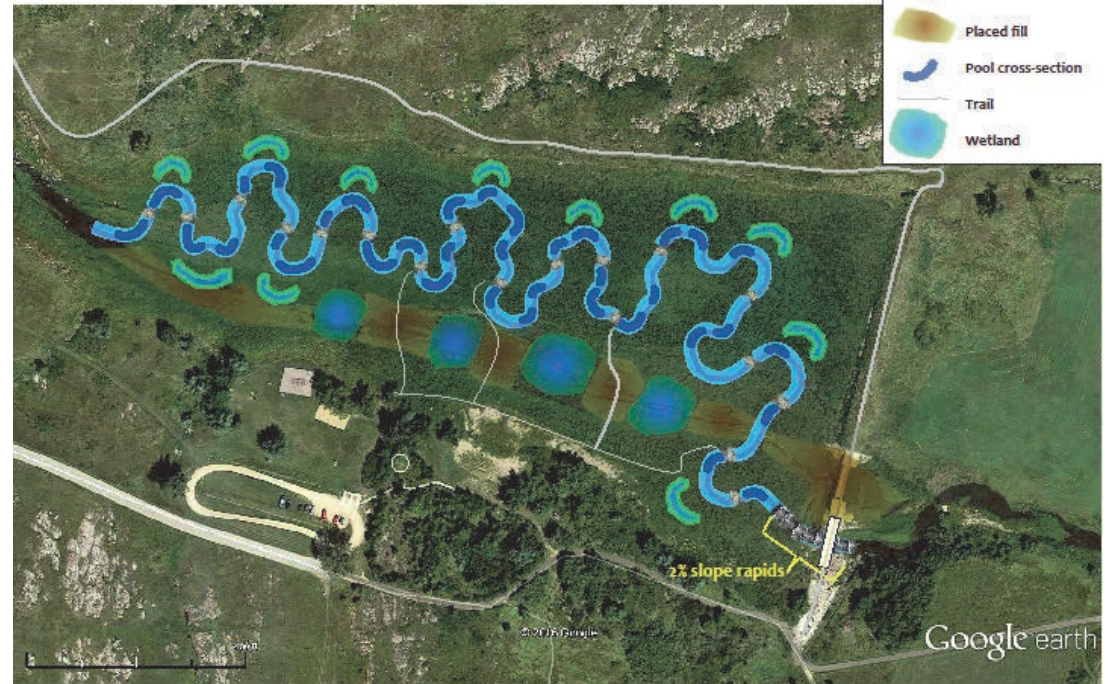
He said the bridge will be high enough and solid enough to allow "100-year floods" to pass under it.

Preliminary plans also lay out the types of plant life that will be cultivated in the basin, with a "wet meadow" south of the creek and more prairie on the north side.

The initial sketches also show trail access points on each side of the basin where park visitors can approach the basin.

Although game fish won't be stocked in the new water

A preliminary drawing of future restoration plans for the basin show a meandering stream with boulders and oxbows that were prevalent in the pre-dam basin. Oxbows are off-stream inlets that fill in with sedimentation and provide quieter waters for safe havens for wildlife.



area, there will still be native species — including bluegill — that anglers can enjoy catching.

### FEMA to fund 75 percent of estimated \$1.8 million 'basin' restoration project

The bridge alone will cost roughly \$325,000 and it will be completed as part of the broader "basin" restoration project in the Blue Mounds State Park.

The Federal Emergency Management Agency has approved up to \$1.8 million in disaster relief for damages caused by the 2014 flood.

"This is the amount that was determined to be needed to put back what was there — as it was, with no other improvements," Ingebretsen said.

Federal emergency funds will cover 75 percent of costs and the state will cover the remaining 25 percent.

Instead of putting resources back into a dam, the emergency funds will instead restore the Mounds Basin and put a walk bridge where the dam used to be.

### Construction to begin in 2018; completion in 2019

Final approval of FEMA funds will come after environmental review and design are complete.

State and federal environmental impact studies need to be completed before bid letting and construction, so



The 1936 black-and-white image shows a railroad berm on the east end of the Blue Mounds Basin area prior to the dam being constructed. The image shows that there was a bridge crossing the waterway, and restoration plans call for a walk bridge to go in where the dam was. It will cross a scenic rapids where the elevation drops.

the basin project will likely be completed in 2019.

Hennessy said a good share of creek restoration can be completed in winter months, but mating seasons for the endangered Topeka shiner minnow will dictate some of the construction schedule.

On a side note, Sioux quartzite from the dam remains will be used elsewhere in the park.

The March 9 meeting was the third of four scheduled meetings among state and local park officials and a citizens advisory group tasked with

guiding future recreation in the Blue Mounds State Park.

See the related story about recreation features — such as shelter houses, playground equipment and an interpretive center — planned elsewhere in the park.

The final meeting is set for April 27 with an agenda to establish a communications plan to share park goals with the public and to restart the Park Partners group that hasn't met in 10 years.

That event is set for 5:30 p.m. in the lower level of the Luverne Area Chamber office next to the courthouse.

**80th Birthday**  
**WALT DEUTSCH**  
**MONDAY, MARCH 20**  
 Greetings may be sent to:  
 1006 US Highway 75  
 Luverne, MN 56156

**Beaver Creek Annual Meeting Notice**  
 Beaver Creek Township will be holding their Annual Meeting on Tuesday, March 14, 2017 from 4:00-5:00 p.m. Township elections will follow from 5:00-8:00 p.m.  
 One Supervisor to be elected  
 Inclement weather date: Tuesday, March 21, 2017  
 Kathy King  
 Township Clerk

**MARCH MARKDOWN MADNESS**  
**Papik MOTORS**  
 1-90 Luverne, MN  
**Going on NOW at Papik's!**  
**283-9171 | PAPIK.COM**

**CHEVROLET GMC CHRYSLER DODGE Jeep RAM**

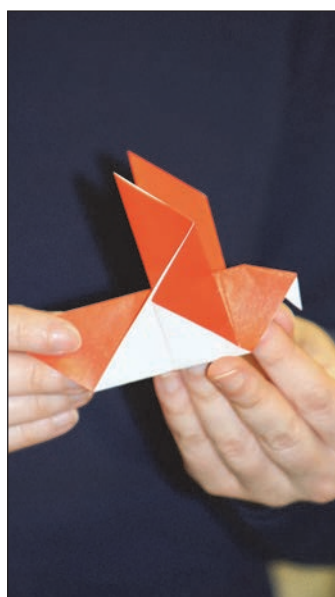
**2017 GMC Sierra SLT All-Terrain X**  
 M.S.R.P. **\$56,230** Stock #253881G  
**17% OFF M.S.R.P.**  
**Papik Price \$46,671**

**2017 Buick Enclave Premium**  
 M.S.R.P. **\$52,020** Stock #265916B  
**16% OFF M.S.R.P.**  
**Papik Price \$43,696**

**2017 Chevrolet Silverado LT**  
 M.S.R.P. **\$47,665** Stock #250445C  
**PLUS 0% for 60 months**  
**Papik Price \$39,915**

**2017 Chevrolet Traverse 2LT**  
 M.S.R.P. **\$43,565** Stock #246117C  
**PLUS 0% for 60 months**  
**Papik Price \$36,565**

Mavis Fodness Photos/0316 Origami



## Experiencing the Japanese art of origami



Rock County Community Library opened its doors Tuesday, March 7, to anyone interested in the Japanese art of folding paper into decorative shapes and figures. Almost 40 people attended the evening event, including 12 adults. Children's librarian Bronwyn Wenzel (above) read the story, "The Origami Master," by Nathaniel Lachenmeyer. At the story's conclusion, participants made their own origami warbler, like Kimberly Woods' completed creation (second photo at far left).

Participants were able to view the dozen origami books the library has on its shelves as well as various origami shapes made by Luverne's Leif Ingebretsen. Leif's mother, Rebecca, made Japanese sweets for everyone to enjoy after the hour-long event.

Wenzel (far left bottom) helps Lilly Wollenberg fold the beak on her warbler.

Emma Deutsch (far left, third photo) proudly holds her almost completed origami warbler.

At left: Mary Kraayenhof (left) and Danelle Hamilton patiently fold their origami papers into warblers.

## CELEBRATIONS

### Open Houses

A come and go baby shower for **Courtney Gonnerman** will be from 10 a.m. to 1 p.m. Saturday, March 18, at Grace Lutheran Church in Luverne.

**Orval (Orv) Sundem** will celebrate his 80<sup>th</sup> birthday with an open house at the American Legion Building in Hills from 4-7 p.m., Saturday, March 25. Greetings may be sent to him at P.O. Box 171, Hills, MN 56138.

### Card Shower

**Walt Deutsch** will celebrate his 80<sup>th</sup> birthday Monday, March 20. Greetings may be sent to 1006 U.S. Highway 75, Luverne, MN 56156.

## MENU

**Monday, March 20:**  
Baked chicken, baked potato with sour cream, squash, bread, sherbet.

**Tuesday, March 21:**  
Barbecue meatballs, mashed potatoes, beets, bread, lemon sponge cake.

Program: Two-buck Tuesday sponsored by Luverne Flowers

**Wednesday, March 22:**  
Chili, pears, cheese sandwich, bun, apple brown betty.

**Thursday, March 23:**  
Sausage egg bake, oven-baked potatoes, fruit cocktail, coffee-cake, pumpkin custard.

Program: Bingo

**Friday, March 24:**  
Ham boiled dinner with cabbage, potatoes, and carrots, fruit salad, breadstick, bar.

Senior Dining offers well-balanced and affordable meals in a community atmosphere.

Bring a friend or make new ones.

Call Lori Teunissen at 283-9846 to make dining reservations or for home-delivered meals.

## COMMUNITY EDUCATION

Register for the **Minnesota Wild** chartered bus trip on **March 23**. Fee is \$118.

Experience what losing your memory feels like when ACE volunteers offer "**Virtual Dementia**" on **March 24**. Fee is \$5.

Learn how to manage your risks at **Retire Wisely** on **March 27**. Fee is \$5.

Prairie Rehab therapists have some tips for how to improve your balance and help prevent falls at **Balance and Falls Class** on **March 29**. Fee is \$5.

Come to **Healthy Living** on **March 29** to learn about programs to manage chronic health conditions, prevent falls, foster self-motivation, and generally just improve your well-being. Fee is \$5.

Students grades 8 and older may register for June's **Student Driver Education** class now.

## Television program features Luverne's Betty Mann

By Lori Sorenson

Luverne's Betty Mann spent time with WCCO reporter Rachel Slavik at the History Center Monday morning talking about nutcrackers.

Slavik said she read about Mann's nutcracker collection and invited her to be the subject of WCCO's "Finding Minnesota."

Mann took her through the History Center where her 2,500-plus nutcrackers are displayed in a room near the entry. They come from all over the world in all shapes and sizes, from miniatures to life-sized.

Slavik said her time spent with Mann was worth the trip.

"I was fascinated by the fact that she knew all about

Segment will air at 10 p.m. Sunday on WCCO's 'Finding Minnesota' program

every one and where every nutcracker came from," Slavik said. "She was so invested in her collection. I was really impressed by that."

The two women and WCCO cameraman David Porter also took a side trip to Mann's home to see her personal shoe collection.

The segment, which features people and places around the state, will air at 10 p.m. Sunday, March 19, on WCCO. It will also be available at wcco.com after 11 p.m.

## 1893: Social dance provides good time

The following appeared in the Rock County News on January 19, 1893:

### DANCE GIVEN BY THE SOCIAL CLUB

The dance given by the social club last Thursday evening was the most social affair of the season. Nearly all of the club turned out. The dance started with a grand march, headed by J. H. Gray, and when the soft sweet strains of the orchestra pealed forth there was nothing lacking. Everybody had a good time. Even the cranks enjoyed themselves. The music was furnished by the old reliable Marshalltown orchestra, under the management of J. S. Ensminger with his flute.

Bert Smith with first violin is a good one. G. S. Hickox



## BITS BY BETTY

By Betty Mann, president, Rock County Historical Society

with his bass is a dandy on marking time. G. W. Cady with the cornet was strictly in it and L. A. Williams second violin and prompter, received more compliments than anybody. As a prompter Mr. Williams is a good one. Few equal, and none surpass him. The ladies of Unity church gave a nice supper in the hall and it is the desire of everyone that they so continue. Everything passed off smoothly. As usual the

electric lights passed off at 12 o'clock and left everyone in the dark. Music has no charms for them. The News joins the club in wishing the Marshalltown orchestra success.

Donations to the Rock County Historical Society can be sent to the Rock County Historical Society, 312 E. Main Street, Luverne, MN 56156.

Mann welcomes correspondence sent to manmade@iu.net.

## Story Hour and Laptime at library

Story Hour for ages 4-5 meets from 10 to 11 a.m. every Thursday through April 13.

It includes stories, songs, crafts and more.

Register by calling the Rock County Community Library at 449-5040.

Laptime for ages birth-through 3 with an adult meets from 10:30 to 11 a.m. every Friday through April 14.

It includes stories, songs, crafts and more.

No registration is needed for this free activity.

## REMEMBER WHEN

### 10 years ago (2007)

•After 40 years, the Rock County Developmental Achievement Center in Luverne has a new name.

Now known as Rock County Opportunities Inc., the facility on West Main Street is a thriving center of activity that serves 36 disabled adults.

It provides work for them in a structured environment, contracting with local businesses for jobs the residents can do.

### 25 years ago (1992)

•New traditions for the Luverne High School Junior-Senior Prom and Banquet may start this year.

The Luverne School Board Thursday approved having the two events on separate dates. Jennifer Erickson, representing the junior class, said a survey showed 60 percent of the students in the two upper grades prefer having the banquet at a later date.

Erickson said junior and senior attendance at the banquet has declined in recent years.

### 50 years ago (1967)

•When the Luverne high school Cardinals take the floor at big, barny Williams Arena at 7:30 tonight, it will be the third time in four years that they've been included in the eight Minnesota tournament finalists.

Tonight, they face Duluth Central, a tall, strong team which boasts an identical season record to that of Luverne — 22 wins, one loss.

For two members of the Cardinal squad, it will be the second time they have played in the state classic. Gary Golla and Chuck Getman were both members of the 1965 squad, when they were sophomores. This year, they're seniors.

### 75 years ago (1942)

•With a large group of well-wishers gathered to see them off, six more Rock county men left by bus yesterday morning at 9:10 o'clock to be inducted into the army at Fort Des Moines under the selective service act. A seventh man under

jurisdiction of the county draft board departed the same day from Barron county, Wis.

Those who left Luverne were: Martin Hagen, Robert McClure, and James Mitchell, of Luverne; Raymond Dean, of Magnolia, John DeHaan, of Hills; and Elroy Stelling, of Jasper. Ray Tee Trowbridge left from Wisconsin, to be inducted with others from that state.

### 100 years ago (1917)

•At the close of business yesterday the balance in the general fund of the city treasury was \$10,525.11, with no unpaid orders outstanding.

Two years ago the city's floating indebtedness—orders outstanding—aggregated \$6,955.85 on the same date. This indebtedness was no part of the expense of building the new power house, but represented ordinary expenditures.

To recapitulate, in the past two years a floating indebtedness of over \$7,000, including interest charges, has been paid off.



Submitted Photo

The Luverne Cardinal Speech Team finished in third place at Saturday's contest in Montevideo. Pictured in the front row, from left are Shelby Nath, Seno Chanthalangsy, Rylee Anderson, Sage VerSteege, Xavier Carbonneau, Nicole Hoogland, Melanie Rittenhouse, (second row) Lindsey Roemeling, Julia Ferguson, Rebecca Austin, Chance Tunnissen, Alexa Chesley, Emma Mumme, (back) Shane Berning, Knute Oldre, Jonah Louwagie, Gunnar Oldre and Cameron Wessels.

## Cardinal speech team takes home third place from Montevideo meet

The Cardinal speech team competed in the Montevideo speech event Saturday, March 11.

The Luverne team of 29 took third place in a field of 12 entries.

Eighteen Luverne participants earned honors:

Creative expression: Shelby Nath, first; Cameron Wessels, third.

Discussion: Knute Oldre, first; Alexa Chesley, sec-

ond; Melanie Rittenhouse, ribbon.

Extemporaneous reading: Nicole Hoogland, ribbon.

Extemporaneous speaking: Shane Berning, first; Chance Tunnissen, third.

Great speeches: Rylee Anderson, fourth.

Humorous: Seno Chanthalangsy, sixth; Gunnar Oldre, ribbon.

Informative: Rebecca

Original oratory: Emma Mumme, fifth; Lindsey Roemeling, sixth; Emma Mumme, fifth.

Prose: Sage VerSteege, first.

Storytelling: Xavier Carbonneau, fifth; Julia Ferguson and Jonah Louwagie, ribbons.

Coach Caroline Thorson said next week will be a very full week for the Cardinal speech team as they

head to New Ulm for the Big South Conference meet Thursday and to the SMSU Invitational in Marshall Saturday.

"Due to the band and choir clinician scheduled in Luverne for the March 18, the numbers heading to SMSU will be quite small, which is a disappointment," she said.

The SMSU Invitational is the final meet before subsections.



Submitted Photos

Participants in the 2017 Communication Arts Contest include (front row, from left) Ava Steinhoff, Brenna Reker, Nicholas Palmquist, Klarissa Burkman, (back) Gretchen Jacobsma, Andrea Luitjens, Mazzie Moore, Maria Rops, Alex Reker and Lydia Palmquist. Not pictured are Josie Scholten and Krista Burkman.

## 4-H'ers showcase lifelong communication skills

Twelve Rock County 4-H'ers from kindergarten through high school shared their talents at the annual communications contest Feb. 27 in the Extension meeting room.

Members participated in interpretive reading, creative writing and photojournalism. Each was judged and awarded ribbons based on work and performance.

Receiving blue ribbons in photojournalism were Krista Burkman, Springdell 4-H Club, and Nicholas Palmquist and Lydia Palmquist, County K-9s. Klarissa Burkman was a Cloverbud participant.

Mazzie Moore and Josie

Scholton, both from the Blue Ribbon Club, received purple ribbons. Nicholas Palmquist and Krista Burkman received blue ribbons.

Purple ribbon winners in interpretive reading were Maria Rops, Livewires; Alex Reker, Springdell; Andrea Luitjens, Magnolia Juniors; and Mazzie Moore, Blue Ribbon.

Gretchen Jacobsma, Magnolia Juniors, and Lydia Palmquist, County K-9s, earned blue ribbons. Cloverbud participants were Ava Steinhoff, Blue Ribbon, and Brenna Reker, Springdell.

Contest goals include developing poise and self-confidence in communicating personal ideas and in public

presentations, developing poise and self confidence in communicating personal ideas and in public presentations, practicing the process of inquiry and research, and encouraging creativity and self-expression through the use of visual and written media.

"I am very proud of the confidence these 4-H members showcased when reading in front of an audience," said Chelsey Asche, Rock County 4-H program coordinator.

"The audience was very supportive of each member so the youth seemed to really enjoy participating. Plus they are gaining lifelong communication skills."



Mazzie Moore with the Blue Ribbon 4-H Club makes sure to add the right amount of emotion to her reading of "A Psalm of Life."



Communication Arts Judge Julie Buntjer (left) offers feedback to Cloverbud Klarissa Burkman on her photojournalism project.

## OBITUARY

### Catherine Fikse

Catherine Ella Fikse, 87, died Thursday, March 2, 2017, at Tuff Memorial Home in Hills.

A funeral service was a Thursday, March 9, at the American Reformed Church in Luverne. Burial was in the United Reformed Cemetery in Hills.

Catherine Proost was born Oct. 26, 1929, to John and Johanna (VanderSluis) Proost in rural Rock Rapids, Iowa. She grew up on a farm near Rock Rapids and attended country school near there.

On June 24, 1949, she married Everett "Bud" Fikse at the Steen Reformed Church in Steen. They made their home in Hills, where they were part-owners of Fikse Produce, along with other family members. Catherine worked various jobs throughout her life and especially enjoyed her work at Tuff Memorial Home. Even after becoming a resident there, Catherine helped in any way she could.

Catherine was a member of the American Reformed Church in Luverne, where she had been active in the Rebecca Circle. She loved to sew. Over the years she sewed over 700 blankets that were sent to children in Haiti and Afghanistan as well as America. Catherine and Bud were quite active with

the Emergency Relief Program where they volunteered at various places throughout the United State. Her husband, Everett, died July 3, 2009. In 2016 Catherine moved to Tuff Memorial Home.

Catherine is survived by seven children, Gary Fikse, Luverne, Faith (Butch) Kruse, Rock Rapids, Leroy Fikse, Norwalk, California, Judy DeBont, Bakersfield, California, Rodney Fikse, Lakewood, California, Lois (Alan) Leuthold, Hills, and Joan (Steve) Michael, Larchwood, Iowa; 16 grandchildren; 13 great-grandchildren; three siblings, Joan (Walt) Bouwman, Artesia, California, Verlyn "Jay" (Elaine) Proost, Twin Falls, Idaho, and Cheryl (Jerry) Pennington, Bakersfield, California; a sister-in-law, Jean Proost, Artesia, California; many nieces and nephews; and other relatives and friends.

She was preceded in death by her parents; her husband; two sons, Eugene and Donavan Fikse; a grandson, Aaron DeBont; a brother, John "Bud" Proost; and a sister, Evelyn Van Middendorp.

Arrangements were through Jurrens Funeral Home of Hills, www.jurrens-funeralhome.com.

(0316 F)



## DEATH NOTICES

### Richard Hampton

Richard "Dick" Hampton, 88, Luverne, formerly of Adrian, died Monday, Feb. 20, 2017, at the Minnesota Veterans Home in Luverne.

A memorial service will be at a later date, and an announcement will be posted prior to that date.

Arrangements are through Heartland Funeral Home in Brandon, South Dakota, www.heartlandfunerals.com.

(0316 DN)

### Bryce Smiens

Bryce Smiens, 59, Luverne, died Saturday, March 11, 2017, at the Tuff Memorial Home in Hills.

A private family committal of cremains will be at a later date. Arrangements are by Dingmann Funeral Home of Luverne, dingmannandsons.com.

(0316 DN)

### Pearl Smith

Pearl "Nellie" Smith, 91, Luverne, died Sunday, March 12, 2017, at the Edgebrook Care Center in Edgerton.

Arrangements are pending with Hartquist Funeral Home of Luverne, hartquistfuneralhome.com.

(0316 DN)

**BASEBALL & SOFTBALL FUNDRAISER**

# SALT SALE

Sponsored by **Bill's Water Conditioning**  
Delivery will be April 1, from 9am-2pm

**FREE IN-TOWN DELIVERY**

**2 FOR \$14 (50 pound bags - not 40 pound)**  
If you pick up, price is 2 for \$12

12 bags or more for out of town delivery  
Pre order & prepay by April 1

Orders will be door to door (starting March 20),  
or you may stop at Bill's Water Conditioning  
or Call Bill's Water Conditioning at 283-4448  
or Coach Wenninger at 220-0110

**Luverne Baseball Traveling Team**  
*sign up*

**MONDAY MARCH 20<sup>th</sup>**

► **Howling Dog**  
► **Baseball, Burgers and Fries Night**  
*(free for families who sign up)*

**5-7 p.m.**  
**Traveling baseball team sign up and parent meeting for anyone grades 3-6 interested in playing traveling baseball**

Talk to your friends about playing a little extra baseball this summer!

Interested in coaching?  
*Please Come!*

**Also sign up for Girls Softball, VFW, Legion or Community Ed Baseball**

**ATTENTION**

Have you been diagnosed with **NON-HODGKIN'S LYMPHOMA** after being exposed to the weed killer **Roundup®**

Agricultural Workers | Nursery Employees  
Landscapers | Golf Course Greens Keepers  
Home Gardeners | City/County Employees

**800-259-1005**

**LUNDY LUNDY SOILEAU & SOUTH, LLP**  
501 BROAD ST. LAKE CHARLES, LA 70601  
WWW.LUNDYLAWLLP.COM

If so the law firm of Lundy, Lundy, Soileau & South is interested in speaking with you immediately, as you may be eligible for financial compensation.

IF NO RECOVERY, NO FEES OR COSTS ARE CHARGED  
Attorney advertising. Prior results do not guarantee future outcomes. We may associate with local firms in states wherein we do not maintain an office. Jackie W. South, Esq.

## Luverne 150th — agriculture/continued from 1A

crops, raise their livestock and raise a family.

From 1870 to 1873 — Rock County's population grew from 138 people to 2,119. Farmers began to till, plant and harvest by hand or with oxen.

During those years it was a challenge to travel anywhere. A team of horses took a full day to travel a round trip of 10 miles. Churches and communities developed within that boundary.

Businesses in small communities — Luverne at the center — provided goods and services to farm families, and railroads delivered wood and iron machinery.

Early pioneers witnessed hard times with blizzards, drought, prairie fires, epidemics, hail, wind and plagues. In 1873, grasshoppers engulfed

Rock County for almost four years. During that time, farmers had no money to spend in Luverne. Businesses failed and people moved away.

In the early 1900s the first tractors began to take over jobs done earlier by livestock. It was truly part of the industrial revolution of agriculture.

After World War I, home generators and wind generators equipped farms with some electricity, but it was not until the 1930s and '40s that the Rural Electric Association brought permanent electricity to farms.

People could throw out coal and wood cook stoves, kerosene lanterns, battery radios and crank phonographs. Also, pumping water, cleaning the barn, milking cows and many other tasks became easier.

The agricultural community in Rock County had truly progressed and brought more settlers with these innovations.

Today those innovations have allowed a single farmer to feed thousands in a single harvest. Technology such as GPS positioning, drones, ever-improving plant hybrids have revolutionized the agriculture business as we know it.

Most recently the arrival of rural broadband service in Rock County has further connected producers to all the benefits of operating online and connecting with immediate information.

Increasingly diverse global markets, renewable fuels and international political climate play a role in lives of farmers who once were concerned only with feeding their own families.



Mavis Fodness Photo/0316 Maple Syrup

About 30 people attended Saturday's program on maple syrup in the Blue Mounds.

## Maple syrup class/continued from 1A

After drilling about a 1.5-inch hole, a plastic spile with an attached hose is hammered or tapped in the hole drilled in the tree trunk. The hose allows sap to drip from the tree into a plastic 5-gallon bucket set on the ground.

"On a good day we have sap dripping like a water faucet in need of repair," Prekker said.

Native Americans were the earliest gatherers of maple syrup in the area. They would use heated rocks to boil the sap into a thick liquid, using bison stomachs as containers.

Further boiling crystallized the syrup into a granular sugar, she said.

Besides sugar maples, which have the highest sugar concentration in the sap, syrup can also be made from black, red and silver maples along with box elder trees.

Preparation is the same for all tree sap — lots of boiling.

"Forty gallons of sap yields one gallon of syrup," Prekker said, "in about seven hours of boiling."

Prekker said identifying a maple tree is easy in Minnesota.

Only two species of trees in the area, the ash and the maple, have opposite branching.

However, the maple tree has a more distinctive outer layer.

"The bark is scaly or flaky," she said.

Once a tree is tapped, Prekker said she gathers the sap daily, during ideal weather conditions for sap movement.

The gathered sap looks like water and can be frozen until enough is gathered for a gallon of syrup.



Participants gather around the campfire to watch frozen sap melt and later boil into maple syrup. The gathered sap looks like water and can be frozen until enough is gathered for a gallon of syrup.

corps of well-informed citizens dedicated to conservation education and service within their communities.

Master naturalists are required to log 40 hours of volunteer service and participate in eight hours of advanced training annually.

Prekker will offer an advanced training course at the Blue Mounds State Park this fall.

"It's a volunteer course to learn about the people, the prairie and the park," she said.

# Give Where You Live

today, tomorrow & beyond

 LUVERNE AREA COMMUNITY FOUNDATION

## GRANT APPLICATIONS DUE MARCH 31, 2017

### Who can apply?

Not-for-profit organizations (either singly or as a consortium), government agencies, academic and research institutions located within Rock County are among the organizations eligible to request support from the Luverne Area Community Foundation.

The Luverne Area Community Foundation invites applications that will enhance the quality of life in the following areas:

- Arts & Humanities
- Social & Economic Growth
- Environment
- Education
- Community Health & Wellness including physical & mental health
- Community & Civic Affairs
- Nutrition
- Recreation

### How to apply?

Find an application and instructions on our recently updated website!

[www.luvacf.org](http://www.luvacf.org)

or contact Emily Crabtree at

507-220-2424 or [emily@luvacf.org](mailto:emily@luvacf.org)

 LUVERNE AREA COMMUNITY FOUNDATION

102 E. Main | Luverne, Minnesota | 507-220-2424

Allow us to help you establish your legacy.

[www.luvacf.org](http://www.luvacf.org)

63rd Annual

# PANCAKE BREAKFAST

Community Appreciation Breakfast

includes:

- Pancakes • Eggs • Ham
- Coffee • Milk • Juice

Saturday, March 18


9a.m. - 1 p.m.

Since 1948

LUVERNE  
FARM STORE

Quality & Service

507-283-9555

 Find us on Facebook

S. Highway 75 Luverne, MN  
[www.luvernefarmstore.com](http://www.luvernefarmstore.com)

Everyone is welcome!

Breakfast served in the Gold Building



THANK YOU - RANDY & DONNA SLADE

## CELEBRATING

# 40

## YEARS

The building housing JJ's Tasty Drive In has changed slightly since it was built in 1967 (at right) and today (far, right). Windows used to be from floor to ceiling and all seating used to be stools. The canopy was added prior to 1977 when the Slade Family began operating the drive-in.



## Randy Slade begins 40<sup>th</sup> year at JJ's Tasty Drive In grill

Story and photos by Mavis Fodness

The opening of JJ's Tasty Drive In signals spring for the Luverne community and surrounding area.

Every year on the second Thursday in March — regardless of the weather — Randy Slade opens his South Highway 75 restaurant. "Sure beats opening on a Monday," he said last week on the March 9, 2017, opening date.

This year marks Slade's 40<sup>th</sup> year behind the grill that's been churning out 500 burgers each season since 1977.

Behind the counter at his side are his dedicated workers and his wife of 18 years, Donna.

Day after day, year after year, diners seek burger and ice cream happiness in the tiny red-, white- and blue-striped building.

It's a routine that has occurred for decades and the community won't have it any other way.

Donna said they have tried changing menu items but the public preferred the old favorites of Big "T", Grizzly and Whimpy burgers with fries or cheese balls.

The same foods were grilled in 1977 when Randy joined his mom, Lorraine, in the drive-in business.

She immediately started him at the grill. "Randy never cooked a thing in his life," Donna said with a laugh. "It was supposed to only be for a short time."

That short time was 480 months ago and today his now-retired mom offers moral support instead.

Thursday's season opener was greeted by a phone call from Lorraine.

"Mom called to wish us good luck," Randy said.

Those calls used to come from Randy's late father, Jim, a longtime school superintendent.

"I like the old days," Randy said. "The place is kind of timeless."

**Tastee-Freez started in 1966, Slade took over in 1977**

JJ's history dates back to late 1966 when the Tastee Freez Drive-In franchise announced it was coming to Luverne.

A drive-in was being built south of Tony's IGA Market (Now Minnwest Bank) on South Highway 75. Purchasing and developing the 150-foot lot was the market's owner, Tony Sieperda.

Businessmen like Sieperda were looking for ways to draw drivers off the newly finished interstate.

Once the Tastee Freez building was finished, the franchise was sold, according to the Nov. 10, 1966, Rock County Star Herald.

Hugh Leslie and his sister Edith were the first restaurant operators when the drive-in opened during the week of June 15, 1967.

A decade and possibly one or two more operators later, the Slades took over the business from John Jackson, whose initials make up the two J's in the drive-in's name.

Star Herald stories reported a "get acquainted" free Coke was given with orders during the week of May 4, 1977.

Simple economics prompted the Slades to continue calling the drive in JJ's. "It was cheaper to keep the name instead of buying a new sign," Randy said.

Ironically a new sign is coming 40 years later, when December's high winds shattered the signage on Highway 75. Randy said the new sign will be installed in a couple of weeks.

JJ's operated a year-round establishment until 1986. A fast food restaurant opened closer to the interstate and fewer drivers made their way into Luverne.

"It wasn't economical to be open during the winter," Randy said.

Economics and good common sense brought a handful of changes to the 1967 drive-in.

The Slades no longer used carhops who served diners in their cars, and employing fewer servers has led to the creation of a self-service drink area.

Benches have replaced the inside stool seating with customers now coming inside to eat or order from the walk-up window.

**Newer business, same old-fashioned service**

What hasn't changed is JJ's personal service often coming from local teenagers who work two to three days a week. For many students JJ's was their first job.

Darcy Smeins was one of those teenagers. Ten years ago she followed in her older sister's footsteps and like many former students has stayed at the job.

"I love what I do," she said Thursday.

"And I love my customers."

The employees also love the Slades and appreciate their work ethic.

"They make you feel like family," said De Pribyl who, with Smeins, was preparing for the drive-in's 2017 opening. "They are always willing to help," added Alex Stanley.

The Slades work side by side with their employees and take an interest in what's happening in their lives, Pribyl added.

"They show they care." Those caring feelings became stronger after the death of Randy's first wife, Pat, in a 1996 car accident. Randy said longtime employees like Carol Wyffels helped him through his grief.

"Everyone stepped up to help," the now retired Wyffels recalled.

The Slades also extend that caring feeling to regular customers. "You see some people come in and you know what they are going to order," Randy said.

And customers know how they are going to pay.

So far, the Slades have resisted the added costs of accepting debit or credit cards, choosing to accept only cash or checks.

JJ's is open seven days a week from 11 a.m. to 9 p.m. From Memorial Day until Labor Day the drive in stays open until 10 p.m.



Randy Slade began working at this grill 40 years ago with his mom, Lorraine, who called the drive-in the morning of March 9 to wish the staff good luck on the first day of business for 2017. A Big "T" burger and fries (center right) waits for delivery to the first customer of the 2017 season.



Randy Slade (left) has operated JJ's Tasty Drive In on South Highway 75 in Luverne for 40 years, 18 of them with his wife, Donna. The Slades have made limited changes to the business that first opened in 1967 but did add the 1949 Harley Davidson motorcycle to the décor 17 years ago. Below: The original freezer, manufactured in 1969, is used today to store the hard ice cream.



Longtime JJ's Tasty Drive In employees Darcy Smeins (left) and Alex Stanley prepare ketchup and mustard dispensers and clean the booths off one more time in preparation for the opening March 9.

## Cards scare champs before falling in overtime

By John Rittenhouse

In a day full of upsets during the quarterfinal round of the Minnesota State Class A Boys' Hockey Tournament at Xcel Energy Center in St. Paul, the Luverne Cardinals nearly produced the biggest one.

Trailing top-seeded Hermantown 2-0 during the second period, the unseeded Cardinals turned the State of Hockey into the state of shock by registering a pair of goals in the final 18:54 of regulation play to send the game to overtime.

Unfortunately for the Cardinals, they couldn't complete the comeback.

Hermantown junior Dylan Kolquist steered a wrist shot into the net 42 seconds into overtime to give the Hawks a thrilling, 3-2 victory.

Kolquist's goals snapped what was a 13-game winning streak for LHS, but it didn't spoil a remarkable effort turned in by the Cardinal players.

"I can absolutely say that I could not ask any more from our players than what they gave in this game," said LHS first-year coach Phillip Paquette.

"We're a team that had been focusing on improving on defense this year after losing a couple of high-scoring section championship games the last couple of years. It has been a process the entire season, but this has to be the pinnacle moment of what we were trying to accomplish defensively this year."

Playing against a Hermantown team that carried a 26-game winning streak into the state quarterfinal, the Cardi-



Luverne senior goalie Kaden Ericson stops a shot from Hermantown's Jesse Jacques during the quarterfinal round of the Minnesota State Class A Boys' Hockey Tournament at the Xcel Energy Center March 8.

John Rittenhouse photo/0316 herman 39

nals needed to be sharp on defense to simply remain in the game against the Hawks.

Not only did they remain in contention, the Cardinals nearly registered an epic upset.

Led by senior goalie Kaden Ericson and a surprising offensive hero in junior defenseman Tyler Reisdorfer, the Cardinals backed the Hawks into a corner late in the game.

Ericson was sensational in goal, stopping 49 of the 52 shots he faced from a high-powered Hermantown offense.

Reisdorfer made Ericson's effort in goal pay off as he netted a pair of goals that not only tied the game but turned seemingly everyone in the arena not wearing Hermantown colors into Cardinal fans.

Although Hermantown sported a commanding 52-26

advantage in shots on goal in the game, LHS didn't seem to be intimidated by the Hawks. Ericson turned in a 17-save effort in a first period that ended in a scoreless draw and captured the attention of veteran Hermantown coach Bruce Plante.

"I thought we played really well right away, but their goalie just kept stoning us," he said.

"After that went on for a while

we started pressing and that led us to doing some things that are out of character for us."

They did find a way to gain the upper hand during the second period.

Junior Tyler Watkins scored the first goal of the game 1:44 into the second stanza.

Senior Ryan Sandelin, Hermantown's leading point-producer, made it a 2-0 game with 2:46 remaining in the period.

Hermantown's goals didn't shake up Ericson, who was expecting a challenge entering the contest.

"I knew I would face a lot of shots in the game, but I think our defense did a good job of blocking shots and limiting shots as much as possible," the senior net-minder said.

It was Luverne's stellar play on defense that left the door open for a comeback, and Reisdorfer made it happen by scoring on two of his three shots during the game.

Reisdorfer's first of two unassisted tallies came with 2:38 remaining in the second period.

His second goal came with 2:58 left in regulation play and created uproar in the arena.

The Cardinals, however, were unable to break the tie.

LHS eventually lost the game in overtime, but the Cardinals gained the respect of the opposing coach before the night was complete.

"They played hard, they were flying around the ice and they were blocking shots all over the place," Plante said.

"I was really impressed by that. I think they played a fantastic game."



Luverne senior Jesse Reed pokes at a puck on the stick of East Grand Forks defenseman Casey Kallock during a state tournament consolation game Thursday at Mariucci Arena in Minneapolis.

John Rittenhouse photo/0316 egf 18

## Green Wave sidelines Luverne boys Thursday

By John Rittenhouse

Based on what happened the night before, there had to be a letdown when the Luverne boys took on East Grand Forks during the consolation semifinals of the Minnesota State Class A State Tournament Thursday at Mariucci Arena in Minneapolis.

About 18 hours after nearly upsetting the state's top-ranked team, Hermantown, on March 8, the Cardinals met the Green Wave in a showdown that would extend the season for the winning team.

LHS put up a good fight by rallying to knot the score at two early in the second period, but fourth-seeded EGF scored three unanswered goals in the final 26 minutes of the game to secure a 5-2 victory.

"We didn't have the spark we did the night before, but I think we played pretty well overall against a very good team," said Cardinal coach Phil Paquette, who guided the Cards to a 22-7-1 record during his first season

as the LHS mentor.

"I think it was a tough turnaround for both teams from playing the night before. They just wore us down and took it in the end."

Playing a game less than 24 hours after nearly posting the biggest upset in tournament history before falling to Hermantown (3-2 in overtime) seemed to weigh heavily on LHS.

The Green Wave, who won state titles in 2014 and 2015, sported a commanding 50-20 advantage in shots on goal and never trailed in the game against the Cards.

"EGF was no slouch," Paquette stated.

"They are a team that was ranked in the top 10 all year and have some very good players who were buzzing around the ice. Our kids gave everything they had in the first game against Hermantown. To come that close to beating the top-ranked team and not finishing it was kind of

heartbreaking for our kids. I'm proud of the way they fought back from a 2-0 deficit to tie the game against EGF, but we ran out of gas after that."

The Cardinals couldn't find their legs in the game's opening period and the Green Wave took advantage of the situation to outshoot LHS 17-4 in the stanza and net the first two goals of the game.

Senior Hunter Olson, the Green Wave's second-leading scorer this season, gave EGF a 1-0 lead 2:58 into the contest.

Junior Carter Beck made it a 2-0 game with 37 seconds left in the period, but the Cardinals displayed they were not ready to give up the fight moments later.

LHS junior Ben Serie lifted a wrist shot into the net with seven seconds remaining to make it a 2-1 game before the first intermission.

Serie's goal seemed to give the Cards new life that enabled them to knot the score at two early in the second period.

Luverne junior forward Kasyn Kruse deposited a backhand shot into the goal 38 seconds into the period to tie the game at two.

Trey Roberts and Nick Harder received assists for the goal. Unfortunately for the Cards, Kruse's tally proved to be the last goal of the season for LHS.

EGF went on to outshoot the Cards 18-7 and score twice in the second period before adding an insurance goal in the third period.

Senior Nick Lund, EGF's leading scorer this season, snapped the deadlock when he registered a goal with 9:00 remaining in the second period.

Senior Nick Derrick doubled the lead (4-2) for the Green Wave with a power-goal that came with 5:18 left in the period.

EGF junior Dylan Egeland scored his first goal of the season with 5:34 remaining in the third period to cap the scoring in the game.

## Chargers eliminate AHS in semifinals

By John Rittenhouse

Adrian's bid to reach the championship game of the South Section 3A Boys' Basketball Tournament was denied Thursday in Worthington.

The third-seeded Dragons took on No. 2 Westbrook-Walnut Grove during the event's semifinal round with a berth in Saturday's title tilt on the line.

Adrian got off to a promising start and sported a lead at halftime, but the Chargers outscored the Dragons 34-22 in the second half to secure a 65-56 victory.

The Dragons end the year with a 16-10 record.

Adrian played well early and sported a pair of four-point leads before upping the advantage to six (11-5) when Zach Bierman converted a layup at the 13:15 mark of the first half.

The Chargers countered with a 6-0 spurt to knot the score at 11 with 11:38 remain-

ing in the stanza, but they never did sport a lead in the first half.

Adrian put together an 11-2 run to open a 22-13 cushion when Ryan Wieneke drained a three-point shot with 6:32 remaining in the half.

W-WG outscored the Dragons 18-12 the rest of the stanza and trailed 34-31 at the intermission.

The game's second half belonged to the Chargers.

W-WG opened the half with a 12-2 run to open a 43-36 advantage with 9:49 left to play.

Adrian scored the next two points to make it a five-point difference (43-38), but the Chargers countered with a 9-0 spurt to up the lead to 14 points (52-38) with 8:18 remaining.

W-WG led by 18 points (62-44) with under five minutes left to play before Adrian rallied late to make the final outcome

AHS/continued on page 3B



Adrian senior guard Zach Bierman drives to the basket during the first half of Thursday's section game in Worthington.

John Rittenhouse photo/0316 abb 1

# Five LHS wrestlers crack All-BSC roster

By John Rittenhouse

Five Luverne High School athletes raked in postseason accolades from Big South Conference officials last week.

LHS gained five selections to the 55-athlete 2016-17 All-Big South Conference Wrestling Team.

Making the list from LHS are seniors Solomon Nielsen and Jeremiah Dooyema, sophomores Jake Haugen and Zach Luke and eighth-grader Hunter Baker.

Only two schools from the league's Western Division drew more all-conference selections than LHS.

Pipestone led the division with seven all-league picks.

Arrows on the roster include seniors Bill Olson and Mckinley Bush, juniors Hunter Burnett, Michael Suda, Jamison VanderWal and Garrett Ploeger and freshman Grant Budden.

Marshall landed six spots on the all-conference roster.

Seniors Dylan Dulas and Toby Semler, junior Wyatt Martin and freshmen Has La Eh, Has Khee Lar and Jaiden Bahr made the list for the Tigers.

Western Division teams Windom and Worthington secured four spots each on the all-conference roster.



Star Herald file photo

State qualifiers (above, from left) Zach Luke, Hunter Baker and Solomon Nielsen made the All-Big South Conference Wrestling Team, as did Jeremiah Dooyema and Jake Haugen (below).

Seniors Nic Putnam, Brandon Kempema and Vince Riley and junior Jacob Prunty represent the Trojans.

Gracing the roster from Windom are senior Evan Weins, sophomore Alex Borsgard, freshman Brett Willaby and eighth-grader Kade Sammons.

Jackson County Central juniors Jacob Tivinnereim and Dalton Wagner and Redwood River Valley sophomore Omar Arredondo are other athletes from Western Division teams on the all-league list.

The roster also includes ath-



Dooyema

letes from Blue Earth Area (6), Fairmont-Martin County Area



Haugen

(6), St. Peter (5), Waseca (3), St. James (3) and New Ulm (3).

# Conference honors three Luverne gymnasts

By John Rittenhouse

Three members of the Luverne High School gymnastics program received postseason honors from Big South Conference officials.

The LHS trio landed three positions on the 15-athlete roster of the 2016-17 All-Big South Conference Western Division Gymnastics Team.

Gracing the list from Luverne are seniors Madison Schandelmeier and Bergin Flom and junior Samantha Pierce.

Division champion Worthington led all division teams with four all-league selections.

Junior Maria Conteras, sophomore Taylor Eggers and freshmen Mckenna Prunty



Flom

and Kara Thuringer represent the Trojans.

Jackson County Central matched Luverne by securing three all-conference selections.

Juniors Abby Schneekloth



Schandelmeier

and Brooklyn Schuett made the team for the Huskies.

Redwood Valley and Windom placed two athletes each on the all-league roster.

RWV senior Hannah Stevenson and freshman Emma



Pierce

Stevenson cracked the roster, as did Windom sophomore Mareah Carlson and freshman Katelyn Nichols.

Marshall seventh-grader Saphi McFarquhar rounds out the roster.

## BOWLING CLIPBOARD

### Monday Night Bowling League March 6

Games won: Luverne Lanes, 4; Rock Vet Clinic, 0.  
High Scratch Game: Pat Weerheim, 175; JR Weis, 158; Evie Kephart, 146.  
High Scratch Series: Pat Weerheim, 513; JR Weis, 419; Evie Kephart, 364.  
Team High Scratch Game: Luverne Lanes, 497; Rock Vet Clinic, 402.  
Team High Scratch Series: Luverne Lanes, 1443; Rock Vet Clinic, 1167.  
Team High Handicap Game: Luverne Lanes, 710; Rock Vet Clinic, 689.  
Team High Handicap Series: Luverne Lanes, 2082; Rock Vet Clinic, 2028.

### Thursday Night Bowling League March 9

Games won: Kruser's Bruisers, 4; Billy Goats, 4; The Troublemakers, 3; PD's Bar Files, 1; Mark's Electric, 0.  
High Scratch Game: Ken Clark, 207; Jeremy Gehm, 204; Dave Nelson, 200.  
High Scratch Series: Zach Runia, 533; Jeremy Gehm, 521; Ken Clark, 520.  
Team High Scratch Game: The Troublemakers, 708; Kruser's Bruisers, 613.  
Team High Scratch Series: The Troublemakers, 1939; Kruser's Bruisers, 1809.  
Team High Handicap Game: The Troublemakers, 863; Kruser's Bruisers, 807.  
Team High Handicap Series: The Troublemakers, 2404; Kruser's Bruisers, 2391.



## AHS/continued from page 2B

more respectable.

The Dragons put together a 12-2 run ending with a three-point shot from Frank Serrao with two seconds left to make it a nine-point difference at game's end.

Zach Hendel (16 points), Mitchell Lonneman (10 points and eight rebounds) and Bierman (10 points and five rebounds) led the Dragons offensively.

Wieneke paced AHS with nine rebounds.

**Box score**  
Stamer 1 1 3-5 8, Serrao 0 1 0-0 3, Bierman 2 2 0-0 10, White 0 0 0-0 0, Wieneke 1 1 0-0 5, N.Lonneman 2 0 0-0 4, Hendel 5 0 6-6 16, M.Lonneman 4 0 2-4 10.

**Team statistics**  
Adrian: 15 of 45 field goals (33 percent), 11 of 15 free throws (73 percent), 22 rebounds, 14 turnovers.  
W-WG: 28 of 65 field goals (43 percent), two of six free throws (33 percent), 29 rebounds, 11 turnovers.

### Notice:

#### Students of Luverne High School Take Notice

The Scholarship Committee of the A.R. Wood Educational Trust is currently accepting applications for initial or renewal scholarships from seniors and previous graduates of Luverne High School.

To be eligible for consideration candidates must:

1. Be graduates of Luverne High School
2. Rank in the upper fifteenth percent (15%) of his/her graduating class; and
3. Have maintained a 3.0 GPA or better grade point average.

Requests for applications should be directed to:

**First Bank & Trust**  
Wealth Management Services  
Attn: A.R. Wood Educational Trust  
P.O. Box 1347  
Sioux Falls, SD 57101-1347

All requests for applications must be received by First Bank & Trust no later than May 1, 2017. All completed applications must be postmarked and submitted to First Bank & Trust by June 1, 2017.

In accordance with the A.R. Wood Educational Trust, decisions regarding recipients, amounts and number of awards will be made at the sole discretion of the Scholarship Committee.

# Cardinal boys win hearts of many

When one reaches an advanced age like myself, learning something new is a positive thing.



## FROM THE SIDELINES

By John Rittenhouse, sports editor

It makes me feel like it was a good day.

The same can be said about experiencing something new, and that's exactly what happened to me at the Xcel Energy Center in St. Paul March 8.

That was the night when Luverne squared off against Hermantown in what turned into an epic battle during the quarterfinal round of the Minnesota State Class A Boys' Hockey Tournament.

On paper, the game appeared to be a classic mismatch.

The Hawks from Hermantown entered the game on a 26-game winning streak and were ranked as the state's No. 1 Class A squad the entire season.

Luverne, on the other hand, was riding a 13-game winning streak heading into the game.

That fact didn't seem to carry much weight, as many members of the press core covering the game, including myself, couldn't imagine a scenario where the unseeded Cardinals could offer a challenge against the defending state champions.

In this case, I'm not ashamed to admit that I was wrong.

The Cardinals absorbed every punch the Hawks delivered and found themselves in a position to register what would have been the biggest upset in the two-class history of the tournament that has been in place since 1991.

Hermantown, as advertised, controlled the puck most of the game and doubled Luverne's output in shots on goal (52-26) in the contest.

Ultimately, that meant very little.

LHS senior Kaden Ericson was sensational in net and made 17 saves during a scoreless first period.

The Hawks did manage

to score twice in the first 14:14 of the second period, but the Cardinals didn't waver.

Junior defenseman Tyler Reisdorfer trimmed the deficit in half with a power-play goal before the second period was complete and tied the score at two with his second goal of the game that came with 2:08 left in regulation.

It was Reisdorfer's second goal that triggered a new experience for me.

As a longtime fan of the NCAA Men's Basketball Tournament, I've often heard how the fans in a stadium throw their support behind an underdog on the verge of upsetting a No. 1 seed.

I got to live that experience in the Xcel Energy Center in the state quarterfinals.

Fans from East Grand Forks and St. Cloud Cathedral, who slowly filled the arena for the second game of the evening, eventually made their presence known.

When LHS netted the tying goal, it was clear to me that three-quarters of the arena suddenly consisted of Cardinal fans.

It took the new LHS backers from EGF and SCC to figure out that the Cardinals were on the verge of doing one of their teams a big favor by sending the Hawks to the consolation bracket.

Once they did, there was no turning back.

It was simply incredible.

Luverne may have lost the game in overtime, but that's not what I'll remember when thinking about that night in the future.

I'll fondly recall how a Cardinal team from southwest Minnesota turned an arena mostly full of strangers into a loud, appreciative audience.



## Experience a new level of comfort.

RECEIVE UP TO \$1,700 IN REBATES\*

UP TO 72 MONTHS 0% INTEREST FINANCING\*

with the purchase of a qualifying Lennox® home comfort system.



**McClure**  
PLUMBING, HEATING, AIR CONDITIONING, INC.  
Luverne, MN

(507) 449-2828

412 S. Kniss, Luverne, MN 56156

Offer expires 6/30/2017. \*On a qualifying system purchase. Lennox system rebate offers range from \$250 to \$1,700. Some restrictions apply. One offer available per qualifying purchase. See your local Lennox dealer or www.lennox.com for details. ©2017 Lennox Industries Inc. Lennox Dealers are independently owned and operated businesses.

## BEAVER CREEK MUTUAL INSURANCE COMPANY ANNUAL MEETING

The Annual meeting of the policyholders of the Beaver Creek Mutual Insurance Company, will be held at the Pizza Ranch in Luverne, MN on Tuesday, April 4th, 2017 beginning at 2:00pm, for the purpose of electing 2 Directors for a term of three years, for hearing reports of Officers for the past year, and to conduct such other business as may properly come before the meeting. A member may cast their vote in person or through proxy filed with the Secretary 5 working days prior to the Annual meeting. Every Policyholder is sincerely requested and urged to be present.

Door prizes will be given at the meeting. Lunch will be served following the meeting.

BY ORDER OF THE DIRECTORS

**Bernard Ulk, President**  
**Mike Engesser, Secretary**

# Star Herald CHURCH

Page 4B March 16, 2017

**St. Catherine Catholic Church**  
203 E. Brown St., Luverne  
St. Catherine Ph.: 283-8502

**St. Mary Catholic Church, Ellsworth**  
Thursday, March 16: 1-4 p.m. Fun Day; 6:30 p.m. St. Catherine Stations. 7 p.m. St. Catherine PC. Friday, March 17: 3:30 p.m. St. Mary Stations. 4:30-7 p.m. Knights of Columbus Fish Fry. Saturday, March 18: 10 a.m. Women's Lenten Retreat at Owatonna. 2:15 p.m. Vets Bingo. 5:30 p.m. Mass at St. Catherine. Sunday, March 19: 8:30 a.m. Mass at St. Mary. 10:30 a.m. Mass at St. Catherine. Noon First Communion Banner Making. 6 p.m. LCF. 7:30 p.m. Bible Study. Tuesday, March 21: 9:30 a.m. Bible Study. Wednesday, March 22: 10 a.m. Mass at Mary Jane Brown Home. 3:30 and 7 p.m. Faith Formations. 5 p.m. Learning Center. 6:30 p.m. RCIA. Thursday, March 23: 4 p.m. Vets Mass. 6:30 p.m. St. Catherine Stations.

**Luverne Christian Reformed Church**  
605 N. Estey St., Luverne  
Office Ph. 283-8482; Prayer Line Ph. 449-5982  
www.luverncrc.com — luverncrc@gmail.com  
Roger Sparks, Pastor

Sunday March 19: 9:30 a.m. Worship Service. 11 a.m. Sunday School and Catechism Classes. 6:30 p.m. Worship Service. Monday, March 20: 9 a.m. PERK UP at Mary Jane Brown Home. Tuesday, March 21: 9:30 a.m. Coffee Break/Story Hour. Wednesday, March 22: 2 p.m. Faith Builders Bible Study. 7 p.m. Youth Group.

**First Baptist Church**  
1033 N. Jackson St., P.O. Box 975, Luverne  
Ph. 283-4091; email: fbcluv@iw.net — www.fbcluvverne.org  
Walt Moser, Pastor

Thursday, March 16: 6 a.m. Men's Bible Study at FBC. 9:30 a.m. Women's Bible Study at FBC. 7 p.m. Worship service on Vast Channel 3. Sunday, March 19: 9:15 a.m. Sunday School. 10:30 a.m. Morning Service. 6 p.m. Election of Officers. Tuesday, March 21: 7 a.m. Men's Bible Study at FBC. Wednesday, March 22: 6:55 p.m. Awana. Thursday, March 23: 6 a.m. Men's Bible Study at FBC. 9:30 a.m. Women's Bible Study at FBC. 7 p.m. Worship Service on Channel 3.

**Grace Lutheran Church**  
500 N. Kniss Ave., Luverne  
Ph. 283-4431; www.gracelutherne.org — nichols-glc@live.com  
Ron Nichols, Pastor; Cole McCormick, Interim Pastor

Thursday, March 16: 8:30 a.m.-noon MIA. 9:30 a.m. Coffee. 4:30 p.m. Book Study. Friday, March 17: 6:30 p.m. Worship on Vast Channel 3. Saturday, March 18: 10 a.m. Courtney Gonnerman Baby Shower. 5:30 p.m. Worship with Communion. Sunday, March 19: 8:15 a.m. Radio Broadcast; Worship with Communion. 9:15 a.m. Coffee. 9:30 a.m. Sunday School and Adult Study. 9:50 a.m. Fifth grade First Communion. 10:45 a.m. Worship with Communion. Fourth grade milestone. Monday, March 20: 4:30 p.m. Worship on Vast Channel 3. 4:45 p.m. Echoes. Tuesday, March 21: 9 a.m. Staff meeting. Wednesday, March 22: 7 a.m. Men's Bible Study. 3:30 p.m. Faithweavers. 5:30 p.m. Lenten meal. 6:45 p.m. Lenten Worship. 7:30 p.m. Choir. Thursday, March 23: 9 a.m. Naomi Circle at Grace; Rachel Circle at Grace. 1:30 p.m. Lydia Circle at Grace. 2 p.m. Sarah Circle at Mary Jane Brown Home. 4:30 p.m. Book Study. 7 p.m. Priscilla/Elizabeth Circle at Grace.

**Bethany Lutheran Church**  
720 N. Kniss Ave., Luverne  
Ph. 507-283-4571 or 507-449-0291 or 605-215-9834  
pastorapalmquist67@yahoo.com  
Andrew Palmquist, Pastor

Sunday, March 19: 9 a.m. Sunday School. 9:15 a.m. Bible Class. 10:15 a.m. Worship. Wednesday, March 22: 3:45 p.m. Catechism. 6 p.m. Soup Supper. 7 p.m. Lent Vespers. 7:45 p.m. Catechism Class.

**American Reformed Church**  
304 N. Fairview Dr., Luverne  
Ph. 283-8600; email: office@arcluverne.org  
Mike Altana, Pastor

Friday, March 17: 6:30 a.m. Community Men's Bible Study. Sunday, March 19: 9:30 a.m. Worship. 10:50 a.m. Family Education. 1:30 p.m. Mary Jane Brown Home and Poplar Creek Services. 7 p.m. Senior RCYF. Tuesday, March 21: 10 a.m. Staff meeting. 6:45 p.m. Bible Study Fellowship. Wednesday, March 22: 5:30 p.m. Midweek Meal. 6:30 p.m. Pioneer Clubs. 6:45 p.m. Rachel Circle; YEL. 7 p.m. Abide Praise Team. 8 p.m. Choir.

**First Assembly of God Church**  
1075 110<sup>th</sup> Ave., 2 miles west of Luverne on County Rd. 4  
Kenneth and Gloria Kashner, Pastors  
Sundays: 9 a.m. Sunday School. 10 a.m. Morning Worship. 6:30 p.m. School of the Holy Spirit. Wednesdays: 7 p.m. Kids Connection; Men's Bible Study with Pastor Ken; Women's Bible Study with Pastor Gloria.

**First Presbyterian Church**  
201 S. 3<sup>rd</sup> St., P.O. Box 73, Beaver Creek  
Ph. 507-935-5025  
Email: lori.firstpres@gmail.com  
Worship Leader Michael Blank

Sundays: 9:30 a.m. Morning Worship. 10:30 a.m. Sunday School. Third Wednesday: Deborah Circle.

**Magnolia United Methodist Church**  
501 E. Luverne St., Magnolia  
Church Ph. 283-9698; cell 227-7821  
adrmagumc@frontiernet.net — www.adrianmagnoliaumc.com  
Kristi Franken, Pastor

Sundays: 9:30 a.m. Sunday School. 10:30 a.m. Worship. Wednesday, March 22: Lenten Service in Adrian. 6 p.m. Soup. 6:30 p.m. G1 in Adrian. 6:45 p.m. Service.

**Steen Reformed Church**  
112 W. Church Ave., Steen  
Ph. 855-2336  
Jeremy Wiersema, Pastor

Sundays: 9:30 a.m. Worship; service broadcast on KQAD. 10:45 a.m. Sunday School. 6 p.m. Youth Group. Evening worship at 6 p.m. first and third Sundays. Wednesdays: 7 p.m. Midweek.

**United Methodist Church**  
109 N. Freeman Ave., Luverne  
Ph. 283-4529; email: luverneumc@iw.net  
Dorie Hall, Pastor

Thursday, March 16: 1-3 p.m. Rock County Food Shelf. Saturday, March 18: 9 a.m.-3:15 p.m. Southern Prairie District Day. 8 p.m. AA meeting in Upper Room. Sunday, March 19: 9 a.m. Traditional Service. 10 a.m. Coffee Hour and Adult Sunday School. 11 a.m. Come As You Are Service. 4:30 p.m. Genesis/Revelations Bible Study. 6 p.m. A.L.I.V.E. Youth Group. 6-9 p.m. Youth Rally - Craig and Molly. Monday, March 20: 8 p.m. AA meeting in Upper Room. Tuesday, March 21: 2 p.m. Pastoral Gathering at Mary Jane Brown Home. 6:30 p.m. Trustees meeting. 7:30 p.m. Church Council meeting. Wednesday, March 22: 5:30 p.m. Community Meal. 6 p.m. F.U.E.L. Children's Ministry/Confirmation. 7 p.m. Lent Service at First Presbyterian Church. 8 p.m. AA meeting. Thursday, March 23: 10 a.m. RCMA meeting. 1-3 p.m. Rock County Food Shelf.

**First Presbyterian Church**  
302 Central Ave., Luverne  
Ph. 283-4787; email: Firstpc@iw.net — www.fpcluverne.com50  
Jason Cunningham, Pastor

Sunday, March 19: 9 a.m. Sunday School. 10:15 Worship. Monday, March 13: 5-6 p.m. Weight Watchers.

**St. John Lutheran Church**  
803 N. Cedar St., Luverne  
Ph. 283-2316, Dial-A-Devotion Ph. 283-4005  
email: stjoh@iw.net — www.stjohnlutheranluverne.org  
Gary Klatt, Pastor

Thursday, March 16: 9 a.m. Little Lambs Devotions. Saturday, March 18: 5:30 p.m. Worship. Sunday, March 19: 9 a.m. Worship. 10:15 a.m. Christian Education Hour. 11:15 a.m. Junior Choir Rehearsal. 1 p.m. Middle/High School event at The Sky Zone. Monday, March 20: Newsletter deadline. 7:30 p.m. Parish Planning Council. Tuesday, March 21: 11:15 a.m. Staff meeting. 1 and 6:30 p.m. Quilting. 2 p.m. Circle meetings. Wednesday, March 22: 9 a.m. and 1 p.m. Little Lambs Devotions. 9:30 a.m. Bible Study. 6 p.m. Worship. 6:30 p.m. Guild Supper. 7 p.m. KFC/Catechism; High School Bible Study; Senior Choir. Thursday, March 23: 9 a.m. Little Lambs Devotions. 9:45 a.m. Rock County Ministerial Association.

**Living Rock Church**  
500 E. Main St., Luverne  
Ph. 449-0057; www.livingrockswmn.org  
Billy Skaggs, Pastor

Sundays: 10:30 a.m. Worship; Kids Rock Children's Ministry. 6 p.m. Youth Ministry. Life groups meet throughout the week.

**New Life Celebration Church**  
110 N. Oakley, Luverne  
Ph. 449-6522; email: newlifecel@live.com

Sundays: 9:30 a.m. Worship at 110 N. Oakley. Every third Thursday: 5 p.m. Food give-away at Senior Citizens Center. Bible Study groups meet at various times and days.

**Zion Evangelical Lutheran Church**  
305 E. 2<sup>nd</sup> St., P.O. Box 36, Hardwick  
Ph. 669-2855; email: revmumme@gmail.com — www.zionlutheranhardwick.com  
Mark W. Mumme, Pastor

Thursday, March 16: 3:30 p.m. Zion Worship Service airs on Cable 3 TV. Friday, March 17: 3:30 p.m. Zion Worship on Channel 3. Sunday, March 19: 9 a.m. Sunday School and Adult Bible Study. 10 a.m. Mentor Program. 10:30 a.m. Worship with Communion; Adult Choir sings. Monday, March 20: 1 p.m. Quilting. Wednesday, March 22: 6 p.m. Confirmation; Lenten Luncheon. 7 p.m. Lenten Worship Service. 7:45 p.m. Choir Practice. Thursday, March 23: 3:30 p.m. Zion Worship on Channel 3.

**Ben Clare United Methodist Church**  
26762 Ben Clare Ave., Valley Springs, S.D.  
igtwlb@WOW.net  
Bill Bates, Pastor

Sundays: 9 a.m. Worship; 10 a.m. Fellowship; 10:30 a.m. Sunday School for all ages.

**First Lutheran Church**  
300 Maple St., Valley Springs, S.D.  
Ph. (605) 757-6662  
Intern Pastor Laura Phillips

Saturday, March 18: April Newsletter deadline. Sunday, March 19: 9 a.m. Worship Service. 10 a.m. Sunday School. Wednesday, March 22: 7 p.m. Lenten Service with Pastor Dave Lund at Palisade Lutheran.

**Palisade Lutheran Church**  
211 121<sup>st</sup> St., Garretson, S.D.  
Ph. (507) 597-6257 — firstpalisade@alliancecom.net  
Intern Pastor Laura Phillips

Saturday, March 18: April Newsletter deadline. Sunday, March 19: 9:15 a.m. Sunday School. 10:30 a.m. Worship/Coffee Cup. Sunday, Wednesday, March 22: 7 p.m. Lenten Service with Pastor Dave Lund.

**Bethlehem Lutheran Church**  
Pastor Maggie Berndt-Dreyer  
112 N. Main St., Hills  
Ph. 962-3270  
e-mail: bethlehemluth@alliancecom.net  
Maggie Berndt-Dreyer, Pastor

Thursday, March 16: 7 p.m. Circle of Hope at Marilyn Nelson's home. Sunday, March 19: 9 a.m. Worship at Tuff Chapel. 9:30 a.m. Sunday School; Reading the Bible at Trinity Chapel. 10:30 a.m. Communion at Bethlehem. 7 p.m. Grades 6-8 Youth Night. Tuesday, March 21: 2:30 p.m. Bible Study at the Tuff Home. 3:15 p.m. Bible Study at the Village. Wednesday, March 22: 9 a.m. Quilting. 6-6:45 p.m. Meal. 7 p.m. Lent Service.

**Hills United Reformed Church**  
410 S. Central Ave., Hills  
Office Ph. 962-3254  
hillsurc@alliancecom.net  
Alan Camarigg, Pastor

Sundays: 9:30 a.m. and 6 p.m. Worship Services.

## One huff and puff and it's all gone

Every so often when preparing a sermon, I get an inspiration from the secular world that will tie into the sermon.



### BUILT ON A ROCK

By Pastor Kristi Franken, United Methodist Church, Adrian Magnolia

It was on one particular Sunday a few weeks ago that I preached a sermon titled Rock Solid Foundations. When I came across the word foundation in the scripture text in 1 Corinthians 3, immediately I found my mind drifting to the childhood story, "The Three Little Pigs."

The three little pigs had found themselves thrust into the wilds of the world to make a life of their own. You would think they would work together to build one house. But no, they are individualists and have their own ideas about the materials to use. Unbeknown to the pigs, there is the big bad wolf lurking in the shadows waiting for the golden opportunity to capture these pigs. And so it goes...

Pig No. 1 builds his house with straw. It does not take long to build a house with straw because it is lightweight and flexible. BBW (big bad wolf) arrives and with one huff and puff the house is gone and the pig is eaten.

Pig No. 2 builds his house with sticks, a little more durable than straw but again, no stability with sticks. And again with one huff and puff the house is gone and Pig No. 2 is eaten.

Pig No. 3 has a little more sense and builds his house out of brick to hold up in the worst scenario. The wolf is huffing and puffing, and puffing and blowing and nothing happens. Pig No. 3 had the sense to build his house on a strong foundation.

The apostle Paul says, "For no one can lay any foundation other than the one already laid, which is Jesus Christ." Verse 11. The foundation of our Christian faith lies upon the death and resurrection of Christ. We live with the knowledge of faith of what Christ has done for each of

us, we live with hope of a life eternal and we live with the love of those around us. If we keep our strong foundation, then nothing will happen because Christ is our foundation.

Our culture has many foundations that are made of things that will not last. In a moment's notice our job can be gone, an unexpected bill shows and threatens foreclosure, our 401K just vanished because the company filed bankruptcy, etc. But what happens when death comes knocking at our door? Is our foundation strong enough to hold up? Is it OK for our foundation to waver a little so we can find the strength to hold on? The wolf is continually knocking on my door just waiting for that opportune moment to blow my foundation apart. But with Jesus as my foundation, I find my strength.

The season of Lent has begun and we walk with Jesus through the difficulty of heading to the cross. The last week of his life will be the most difficult with his trial and the sentence place upon him ... the crucifixion. Jesus had a strong foundation because he knew what was before him. But he too was tempted by Satan, who was just waiting to blow everything apart so Jesus would crumble. It did not happen. Even in death, Christ built a foundation so strong it would hold all of humanity from crumbling to Satan.

How is your foundation holding up? Does it need a little work? Make sure you examine it soon — the BBW is lurking in the shadows just waiting to huff and puff and BLOW IT IN! Especially during this season of Lent.

**These Weekly Church Page Messages are contributed to God's Work through the Church and by these concerned and responsible citizens & businesses:**

Call Rick or Chantel to place your ad!

283-2333

**Tuff Memorial Home, Retirement Apartments & Tuff Village**  
"A Home Where Residents SMILE"  
Hills, Minnesota  
Phone 507-962-3275

**Papik**  
MOTOR OIL  
LUVERNE, MINN.  
I-90 in Luverne, MN  
507-283-9171 • 1-800-634-7701

Read us online!  
**Rock County STAR HERALD**  
www.Star-Herald.com

# Trust In Him



**Prizza Ranch**  
110 E. Main, Luverne, MN  
Phone 507-283-2379

**MANLEY**  
TIRE & OIL SERVICE  
Manley Minnesota  
1-800-615-3704  
Open six days a week - Closed on Sundays  
To God be the Glory.

**CWG**  
Business Insurance.  
Tri-State Region *Period!*

**Rock County STAR HERALD**  
Luverne, MN • 507-283-2333

**Bruce's Electric**  
residential, commercial and farm wiring  
Bruce Umbreit  
Electrical Contractor  
1200 Linden, Luverne, MN 56156  
Phone 507-283-4917

**Luverne ANNOUNCER**

To Advertise  
Call  
283-2333

**Buffalo Ridge**  
INSURANCE  
507-283-2381 www.buffaloridgeins.com E-mail: info@buffaloridgeins.com

**McClure Electric**  
Alan M. Aanenson, owner  
Farm, Home & Commercial Wiring  
Luverne, MN Phone 507-283-4716

**First Farmers & Merchants**  
303 E. Main, Luverne, MN  
507-283-4463  
www.ftmbank.com  
We believe in you.  
Member FDIC. Aid the community.

**HILLS STAINLESS STEEL & EQUIPMENT CO., INC.**  
506 W. Koehn, P.O. Box 987, Luverne, MN  
PHONE 507-283-4405  
Church is Important - Please Attend!

**MINNWEST BANK**  
• 116 E. Main St., Luverne 507-283-2366  
• S. Hwy. 75, Luverne 507-283-9131  
• Main St., Beaver Creek 507-673-2333  
Member FDIC www.minnwestbank.com

**HARTQUIST**  
Funeral and Cremation Services  
- ENGBRETSON CHAPEL -  
507-283-2777  
www.HartquistFuneral.com  
"Let our family help your family"  
Serving the Luverne and Surrounding Communities

**Tollefson Publishing**  
117 W. Main  
Luverne, MN 56156  
507-283-2333

## Order to correct or remove hazardous property and to abate a nuisance

(MINN. STATS. § § 145A.05 SUBD. 9, 463.17;  
LIVERNE CITY CODE § 10.56 SUBDS. 4(P), 6, 9, 11)

City of Luverne, a municipal corporation under the laws of the State of Minnesota, Plaintiff,

vs. ORDER TO CORRECT OR REMOVE

JPMorgan Chase Bank, National Association, HAZARDOUS PROPERTY AND TO ABATE A NUISANCE

and Joshua D. De Pyper, a single individual, (Minn. Stats § § 145 A.05 Subd. 9, 463.17;

and Luverne City Code § 10.56 subds. 4(P), 6, 9, 11)

John Doe and Jane Doe, Defendants.

TO: J P MORGAN CHASE BANK, National Association, 100 S 5th Str c/o CT Corporation System Inc., Mpls, MN 55402 USA and JOSHUA DE PYPER, whose last known address was 702 N. McKenzie Street., Luverne, MN 56156 AND JOHN DOE AND JANE DOE, who may assert any right, title, lien, tenancy, claim, or interest in that real property whose street address is 702 N. MCKENZIE STREET, LIVERNE, MN 56156, legally described as

The West Eighty Feet (W 80') of Lot Four (4) in Block Three (3) in Barck, Adams, and Howe's Addition to the City of Luverne, State of Minnesota.

You and each of you are hereby ORDERED to abate, within a reasonable amount of time NOT TO EXCEED 20 (twenty) DAYS FROM THE DATE OF SERVICE OF THIS ORDER UPON EACH OF YOU, the following which are hazardous property upon the above-described real property situate in the City of Luverne, Rock County:

**all accumulations of discarded, worn-out and/or inoperable materials and items, garbage, refuse, debris and/or metallic articles held for scrap value which are on said real property and are not stored in an enclosed space, as well as all vehicles whether operable or inoperable parked on unapproved surfaces and/or on the front or side yards of the residence upon said real property.**

A motion for summary enforcement of this Order will be made to the District Court, Rock County, unless corrective action is taken in full to the reasonable good-faith satisfaction of the City of Luverne within the time period set forth above or unless an Answer is filed within the time specified in Minnesota Statutes section 463.18.

Dated: February 16, 2017

City of Luverne  
/s/ John Call  
City Administrator  
(02-23, 03-02, 03-09, 03-16)

## Rock County seeks crack/sealing proposals by March 31

NOTICE TO CONTRACTORS  
BITUMINOUS CRACK SEALING / S.A.P 067 - 030 - 009  
BIDS CLOSE AT 10:00 A.M. MARCH 31, 2017  
LIVERNE, MINNESOTA

Sealed proposals will be received by the Rock County Highway Department at Luverne, Minnesota until 10:00 A.M. on Friday, MARCH 31, 2017.

**READ CAREFULLY THE PROVISIONS FOR THE WAGE RATES AS CONTAINED IN THE PROVISIONS, AS THEY WILL AFFECT THIS PROJECT.**

Attention is called to the fact that the contractor must comply with the **\*\*Special Equal Employment Opportunity Provisions\*\*** as contained in this Proposal.

Proposals will be opened and read publicly in the presence of the Rock County Highway Engineer at the Rock County Highway Building located at 1120 North Blue Mound Avenue in Luverne, MN immediately following the hour set for receiving bids for the following Rock County Highway work. Bids will be awarded on Tuesday, April 4, 2017 at the regular Board of Commissioners Meeting.

Construction of Bituminous Crack Treatment. The project is located at various locations in Rock County

The major items of work are: 60,000 pounds Bituminous Sealant for Crackfilling Plans, specifications, and proposals may be viewed, and downloaded at [www.questcdn.com](http://www.questcdn.com) and at the Rock County Highway Department website, [www.co.rock.mn.us/highway](http://www.co.rock.mn.us/highway). Questions may be directed to the office of the Rock County Highway Engineer, 1120 North Blue Mound Avenue, P.O. Box 808, Luverne, Minnesota 56156-0808 / (507) 283 - 5010.

The non-refundable cost for plans and one proposal will be \$30.00.

Bids must be accompanied by a certified check or corporate surety bond drawn in favor of the Rock County Treasurer in the amount of at least five percent (5%) of the proposal.

Sealed bids shall be clearly marked "PROJECT NO. S.A.P. 067-030-009"

The Board of Rock County Commissioners reserves the right to reject any or all bids and to waive any defects therein.

Rock County is an Equal Opportunity/Affirmative Action Employer.

Mark R. Sehr, P.E.  
Rock County Highway Engineer  
(03-02, 03-09- 03-16)

## Gruis applies for livestock feedlot permit

NOTIFICATION REQUIREMENTS  
MINNESOTA RULE 7020.2000, SUBP. 4

Notice is hereby given per Minnesota Statutes 116.07, subd. 7(a), that Brian Gruis has made application to the County of Rock, for a permit to construct a feedlot with a capacity of 500 animal units or more.

The proposed feedlot will be located in the SW 1/4 of the NW 1/4 of section 1 in Battle Plain Township, Rock County, Minnesota.

The proposed facility consists of a total confinement barn to house 2400 head of swine between 55 and 300 pounds. Using 0.3 animal units per head, total animal units are 720. The building shall have a poured reinforced concrete pit for manure storage. The total animal unit capacity will be 720.

This publication shall constitute as notice to each resident and each owner of real property within 5,000 feet of the perimeter of the proposed feedlot as required by Minnesota State Law.

(03-16)

## Blue Mound Dairy applies for livestock feedlot permit

NOTIFICATION REQUIREMENTS  
MINNESOTA RULE 7020.2000, SUBP. 4

Notice is hereby given per Minnesota Statutes 116.07, subd. 7(a), that Blue Mound Dairy, will be applying to Rock County and the Minnesota Pollution Control Agency for a permit to expand a feedlot with a capacity of 500 animal units or more.

The feedlot proposed to be expanded is located in the SW1/4 of Section 28 of Mound Township, T103N, R45W, of Rock County, Minnesota.

The existing feedlot currently has 700 mature dairy cows, 800 dairy heifers and 200 dairy calves housed in a combination of total and partial confinements and open lots for a total of 1580 A.U. The proposed expansion will consist of constructing an addition onto an existing total confinement building that will house an additional 100 hd of mature dairy cows. After the expansion the feedlot will consist of 800 mature dairy cows, 800 dairy heifers and 200 dairy calves for a total of 1720 animal units.

All liquid manure will be stored in earthen basins and the solid manure will be stored in a manure pack and/or temporary stockpile. The feedlot will be owned by Blue Mound Dairy.

This publication shall constitute as notice to each resident and each owner of real property within 5,000 feet of the perimeter of the expanding feedlot as required by Minnesota State Law.

Published at the request of Blue Mound Dairy.

(03-16)

## Notice of Delinquent Taxes

STATE OF MINNESOTA  
COUNTY OF ROCK

DISTRICT COURT  
FIFTH JUDICIAL DISTRICT

TO: ALL PERSONS WITH A LEGAL INTEREST IN THE PARCELS OF REAL PROPERTY DESCRIBED IN THE FOLLOWING DELINQUENT TAX LIST

A list of real property in Rock County on which delinquent property taxes and penalties are due has been filed with the District Court Administrator of Rock County. This list is published to inform all persons that the listed property is subject to forfeiture because of delinquent taxes.

The property owner, taxpayer, or other interested person must either pay the tax and penalty, plus interest and costs, or file a written objection with the district court administrator. The objection must be filed by April 19, 2017, stating the reason why the tax or penalty is not due on the property. If no objection is filed, a court judgment will be entered against the property for the unpaid tax, penalty, interest and costs.

For property under court judgment, the period of redemption begins on May 8, 2017. The period of redemption means the time within which taxes must be paid to avoid losing the property through forfeiture. The period of redemption is three years, with a handful of exceptions. The redemption period is one year for most properties located in a targeted neighborhood, as defined in the Minnesota laws, and for municipal solid waste disposal facilities. The redemption period is five weeks for certain abandoned or vacant properties.

You may also enter into a confession of judgment as an alternative method to paying off the delinquent tax amount and avoiding forfeiture. This allows you to pay the delinquent balance in equal annual installments with a down payment due at the time you confess judgment. The length of the installment plan varies: 5 years for commercial-industrial/public utility property; 10 years for all other properties.

If you have homesteaded property, you may be eligible for a Senior Citizen's Property Tax Deferral, which enables seniors to pay just 3% of their total household income and allow remaining amounts to become a lien on the property that may be deferred for later payment (perhaps upon eventual sale of the property).

It should also be noted by property homesteaders that you are ineligible to receive the Property Tax Refund while you owe delinquent property tax.

To determine how much interest and costs must be added to pay the tax in full, contact the Rock County Auditor-Treasurer's Office, Rock County Courthouse, 204 East Brown St, PO Box 509, Luverne, Minnesota 56156-0509. You may also contact the Auditor-Treasurer at (507) 283-5060 or [ashley.kurtz@co.rock.mn.us](mailto:ashley.kurtz@co.rock.mn.us).

Manda Steensma  
Deputy District Court Administrator  
Fifth Judicial District  
Date: February 6, 2017

District Court Seal

DELINQUENT TAX LIST				
The following table contains a list of real property located in Rock County on which taxes and penalties became delinquent on January 2, 2017. Interest calculated from January 1, 2017, and county costs must be paid along with the total tax and penalties in order for a parcel of real property to be removed from the delinquent tax list.				
NAME OF OWNERS, TAXPAYERS & INTERESTED PARTIES	PARCEL NUMBER & DESCRIPTION OF PROPERTY	YEAR	TOTAL TAX	AND PENALTY
<b>TOWN OF BATTLE PLAIN</b>				
KEVIN R PATER	01-0020-000 SECT-05 TWP-104 RNG-44 E810.4' OF N4303 OF S 1/2 OF NE 1/4 8.00 ACRES	2016	175.28	
<b>TOWN OF CLINTON</b>				
DAVID EEKHOF	03-0130-000 SECT-07 TWP-101 RNG-45 0.87 A TR IN SW 1/4 DESC AS: COM AT SW COR OF SD SW 1/4; N ON W LN OF SEC 7 10 RDS; E = S LN OF SD SEC 14 RDS; S10 RDS; W ON S LN OF SD SEC 14 RDS TO POB 0.87 ACRES	2016	358.60	
MARILYN LOUISE SHEEHAN	03-0216-000 VILLAGE OF ASHCREEK LOTS 5 & 6 BLOCK 4	2016	189.24	
<b>TOWN OF DENVER</b>				
DOUGLAS DEAN LAFRENZ	04-0052-000 SECT-04 TWP-104 RNG-45 A 4.44 A TR IN S 1/2 OF SE 1/4 COM AT + OF C L OF US HWY 75 WITH S LN OF SEC 3, NWLY ON C L 1236.6', WLY 75' TO POB, WLY 15', NWLY 123.24', WLY 467.38', SLY 190.20', SELY 199.17', SLY 170.63', SELY 504.27', NWLY 389.87' TO POB	2016	975.84	
JAMES WM BROOMFIELD & PATTY A BROOMFIELD	04-0143-000 SEC-29 TWP-104 RNG-45 7.80 A TR IN NE 1/4 DESC AS: COM AT NE COR OF SD NE 1/4 AS POB; S ALG E SEC LN 546'; W390'; N43'; W250'; N503'; E640' ALG N SEC LN TO POB 7.80 ACRES	2016	200.20	
DONALD BEAUBIEN	04-0169-000 SEC-36 TWP-104 RNG-45 S 551' OF E 336' OF SE 1/4 LESS .21 A CSAH #19 4.25 ACRES	2016	180.12	
<b>TOWN OF LIVERNE</b>				
BETTY OLSON	06-0009-000 SECT-02 TWP-102 RNG-45 0.69 A TR IN N 1/8 OF SE 1/4 DESC AS: COM AT SW COR OF N 1/8 OF SE 1/4; NLY ON W SIDE OF SD SE 1/4 75' TO POB; ELY 300' = N SIDE OF SD SE 1/4; NLY 100' = W SIDE OF SD SE 1/4; WLY 300' = N SIDE OF SD SE 1/4; SLY 100' TO POB 0.69 ACRES	2016	490.20	
<b>TOWN OF MARTIN</b>				
HENRY C & GLORIA J KELDERMAN	08-0235-000 SEC-13 TWP-101 RNG-47 5.10 A TR IN NW1/4 DESC AS: COM AT NW COR OF SD NW1/4; SLY ALG W LN OF SD QTR 1015' TO POB; ELY = S LN OF SD QTR 600'; SLY = W LN OF SD QTR 470'; WLY = S LN OF SD QTR 370'; NLY = W LN OF SD QTR 230'; WLY = S LN OF SD QTR 230'; NLY ALG W LN OF SD QTR 240' TO POB LESS .10 A CSAH #17 5.10 ACRES	2016	646.80	
<b>TOWN OF ROSE DELL</b>				
WAYNE C KISLOWSKI	10-0036-000 SEC-07 TWP-104 RNG-46 4.47 A TR IN NW1/4 DESC AS: COM AT C OF MN HWY 23 AT N SIDE OF SEC 7; WLY 7.5' ON N SIDE OF SD SEC TO POB; WLY ON N SIDE OF SD SEC 572.5'; SLY 340' = W SIDE OF SD SEC; ELY 572.5' = N SIDE OF SD SEC; NLY 340' TO POB LESS .30 A HWY #23	2016	120.84	
MICHAEL LORENZEN	10-0083-000 SECT-17 TWP-104 RNG-46 S 955' OF W 535' OF SW 1/4 11.73 ACRES	2016	156.20	
NEAL G HAMANN	10-0122-000 SEC-07 TWP-104 RNG-46 A 9.81 A TRACT COMM AT THE SW COR SW 1/4 , E ALONG S LINE OF SW 1/4 741.29' TO PT OF BEG, E 746.44', N'LY 689.32', NW'LY 169.66', S'LY 184.58', W'LY 612.69', S'LY 519.59' TO PT OF BEG LESS 0.29 A CSAH #7 9.81 ACRES	2016	353.10	
<b>TOWN OF VIENNA</b>				
GENE A & CHRISTINE MC CLAIN	12-0019-000 SECT-11 TWP-103 RNG-44 6.00 A TR IN SE 1/4 DESC AS: COM AT SE COR OF SD SE 1/4; NLY ON E SIDE OF SD SE 1/4 933' TO POB; WLY 541' = S SIDE OF SD SE 1/4 NLY 483' = E SIDE OF SD SE 1/4; ELY 541' = S SIDE OF SD SE 1/4; SLY 483' TO POB LESS .19 A CSAH #3 6.00 ACRES	2016	398.20	
<b>CITY OF BEAVER CREEK</b>				
JOHN HAENSEL	13-0031-000 ORIGINAL PLAT TR IN BLK 5 DESC AS: COM AT PT 57' N OF SE COR OF SD BLK 5 AS POB; W 102' = S LN OF SD BLK; NLY = E LN OF SD BLK TO PT OF + NW LN OF SD BLK; NELY TO NE COR OF SD BLK; SLY ON E LN OF SD BLK 120'; M OR L, TO POB	2016	356.82	
BERTHA ALICIA CAMPOS	13-0032-000 ORIGINAL PLAT W 135.5; OF BLOCK 5	2016	565.44	
THOMAS B & LINDA SWANSON	13-0058-000 ORIGINAL PLAT LOTS 9 & 10 BLOCK 11	2016	774.40	
THOMAS B & LINDA SWANSON	13-0058-100 ORIGINAL PLAT LOTS 3 & 4 BLOCK 11	2016	2,232.12	
SHEILA JACOBSON	13-0063-000 ORIGINAL PLAT N 10' OF W 50' & S 40' OF LOT 2 & N5' OF LOT 3 BLK 12	2016	214.68	
<b>CITY OF HARDWICK</b>				
MARY JO HUCKINS	14-0082-000 ROSS'S ADDITION LOTS 5 & 6	2016	1,965.36	
RODNEY M & ALENA D ZIKE	14-0096-000 ROSS'S ADDITION N25' OF LOT 32 & ALL OF LOT 33	2016	2,476.08	
JAMES PETERSEN	14-0110-100 ROSS'S SECOND ADDITION S 40' OF LOT 17 & ALL OF LOT 18 BLK 2	2016	60.42	
JAMES A HOLLOWAY & NICOLE HALVERSON	14-0125-000 HALVERSON'S ADDITION LOT 3 BLOCK 1	2016	574.56	
<b>CITY OF HILLS</b>				
JEANNE R VAL MALSEN	15-0041-000 ORIGINAL PLAT LOTS 6 & 7 BLOCK 1	2016	440.00	
KEITH W & JENNIFER L FORSHEY	15-0088-000 ORIGINAL PLAT LOTS 6 & 7 BLOCK 10	2016	2,109.00	
ROBERT METZLER & DENISE ELLEN	15-0117-000 F.C. FINKE'S ADDITION LOTS 13 & 14 BLOCK 1	2016	222.20	
MARSH METZLER & EVERETT MICHAEL METZLER				
TERRANCE MICHAEL METZLER	15-0136-000 F.C. FINKE'S ADDITION S36' OF LOT 4 & ALL OF LOT 5 & N1/2 OF LOT 6 BLOCK 17	2016	836.00	
ROGER C RUSSELL & CHARLOTTE R RUSSELL	15-0201-000 HELGESON'S & QUALLEY'S ADDITION S 32' OF LOT 4 & S 56' OF LOTS 5 & 6 BLOCK 25	2016	820.87	
JUD DUNN	15-0234-000 QUALLEY ADDITION N 34' OF LOT 11 & S 38' OF LOT 12 BLOCK 2	2016	1,269.96	
<b>CITY OF JASPER</b>				
MICHELLE MERCADO VILLANUEVA	16-0045-200 ROSE DELL ADDITION N 1/2 OF LOTS 1 & 2 BLOCK 17	2016	173.80	
DENNIS & RHONDA GALLOP O - BERNICE HONKEN ET AL	16-0047-000 ROSE DELL ADDITION LOT 4 BLOCK 17	2016	413.60	
<b>CITY OF KENNETH</b>				
GREGORY SCOTT BODKIN	17-0037-000 ORIGINAL PLAT N 1/2 OF LOT 14 & ALL OF LOTS 15 & 16 BLOCK 2	2016	143.64	
<b>CITY OF MAGNOLIA</b>				
DALE D & PATRICIA M AUCH	18-0057-000 ORIGINAL PLAT LOTS 9 THRU 11 & W 10' OF LOT 12 BLOCK 3	2016	107.80	
<b>CITY OF STEEN</b>				
BRANDYN KLOSTERBUER	19-0011-000 SEC-29 TWP-101 RNG-45 TR DESC AS: BEG AT PT 8 RDS W OF C OF S LN OF SEC 29; N 40 RDS; W 8 RDS; S 40 RDS TO SEC LN; E 8 RDS ON SEC LN TO POB & TR DESC AS: BEG AT PT 8 RDS W OF C OF S LN OF SEC 29; N 130'; E 19'; S 130' TO SEC LN; W 19' ON SD SEC LN TO POB EXC TR DESC AS: BEG AT PT 8 RDS W OF C OF S LN OF SEC 29; E ON SD SEC LN 19'; N 130'; W 19'; N 25'; W 45'; S 155' TO SD SEC LN; E 45' ON SD SEC LN TO POB 1.87 ACRES	2016	472.80	
ANNA KERNER	19-0020-000 SEC-29 TWP-101 RNG-45 .27 A TR IN SE 1/4 OF SW 1/4 DESC AS: BEG AT PT 60 RDS W OF C OF S LN OF SEC 29; N 119'; E 100'; S 119'; W 100' TO POB	2016	135.30	
REMINGTON CAIN	19-0031-000 THAT PART OF UNPLATTED PORTION OF CITY OF STEEN IN NE 1/4 OF NW 1/4 32-101-45 DESC AS: COMM AT NE COR OF LOT 6 BLK 1 OF ORIG PLAT; N ALG W LN OF MAIN ST 77.50' TO POB; CONTN N ALG SD W LN 97.22'; CONTN N 33' TO N SEC LN OF NW 1/4; WLY 80.34'; S 33'; CONTN S 97.77'; ELY 80.34' TO POB	2016	435.60	
JANICE K HARRIS O - BRIAN & SHIRLEY RITTER	19-0035-100 ORIGINAL LOTS 1, 2 & 3 BLOCK 3	2016	1,155.00	
DURANT KRUGER	19-0036-000 ORIGINAL LOT 1 BLOCK 4	2016	804.84	
JODIE MARSHALL	19-0039-000 ORIGINAL S 1/2 OF LOT 4 & ALL OF LOT 5 BLOCK 4	2016	1,196.80	
REMINGTON CAIN	19-0059-000 ORIGINAL LOTS 4 & 5 BLOCK 7	2016	22.80	
RANDY & KATHY MARSHALL	19-0073-000 ORIGINAL LOT BLOCK 10	2016	231.00	
TOBY NELSON & KAJIA KAUPINS	19-0090-000 UNRECORDED DRIES BOSCH ADDITION TR IN NE 1/4 OF 32-101-45 DESC AS: COM AT NW COR OF QTR SEC LN OF W 1/2 NE 1/4 OF SD SEC 32; S ON QTR SEC LN 666.5'; E 192' ALG N EDGE OF MINNESOTA AVENUE TO POB; N 119' ALG W LN OF WINTERDYKE STREET; W 76', S 119', E 76' TO POB SAID TR ALSO DESC AS LOT 10 & E 28' OF LOT 11, BLOCK 4 UNRECORDED DRIES BOSCH ADDITION	2016	656.64	

...continued on next page

...continued from previous page

RANDY & KATHRYN MARSHALL	19-0103-000 UNRECORDED DRIES BOSCH ADDITION TR IN NE1/4 OF 32-101-45 DESC AS: COM AT NW COR OF SD NE1/4; S1036.5'; E96'; TO POB; S134.25'; E48'; N134.25'; W48' TO POB SAID TR ALSO DESC AS LOT 3, BLOCK 10 UNRECORDED DRIES BOSCH ADDITION	2016	569.80
	19-0104-100 UNRECORDED DRIES BOSCH ADDITION 2 PRCLS IN NE1/4 OF 32-101-45 DESC AS: ALL THAT PART OF FORMER RR R/W LNG IN SD NE1/4 DESC AS: COM AT SW COR OF N1/2 OF SD NE1/4 AS POB; ELY ALG S LN OF SD N1/2 OF NE1/4 96' TO POB; CONTN E ALG SD S LN 26.5'; NLY = W LN OF SD NE1/4 44'; WLY = S LN OF SD N1/2 26.5'; SLY = W LN OF SD NE1/4 44' TO POB & COM AT NW COR OF SD NE1/4; S1182.75'; E96' TO POB; S90.25'; E26.5'; S44'; E21.5' N134.25'; W48' TO POB SAID TR ALSO DESC AS LOT 6, BLOCK 10 UNRECORDED DRIES BOSCH ADDITION	2016	8.80
MATTHEW W LANDES & PATRICK J LUCCI	19-0105-000 UNRECORDED DRIES BOSCH ADDITION 2 PRCLS IN NE1/4 OF 32-101-45 DESC AS: ALL THAT PART OF FORMER RR R/W LNG IN SD NE1/4 DESC AS: COM AT SW COR OF N1/2 OF SD NE1/4 AS POB; ELY ALG S LN OF SD N1/2 OF NE1/4 96'; NLY = W LN OF SD SEC 44' SD PT BNG SE COR OF LOT 7, BLOCK 10, UNRECORDED DRIES BOSCH ADDITION; WLY = S LN OF SD N1/2 OF NE1/4 96' TO W LN OF SD NE1/4, SD PT BNG SW COR OF LOT 8, BLOCK 10, UNRECORDED DRIES BOSCH ADDITION; SLY ALG W LN OF SD NE1/4 44' TO POB & BEG AT PT 44' N OF SW COR OF W1/2 OF NW1/4 OF NE1/4 OF SD SEC 32; N90.25'; E96'; S90.25'; W96' TO POB SAID TR ALSO DESC AS LOTS 7 & 8, BLOCK 10 UNRECORDED DRIES BOSCH ADDITION	2016	145.92
<b>CITY OF LUVERNE</b>			
PEGGY DIANE HEWITT	20-0005-003 INDUSTRIAL PARK FIRST ADDITION LOT 5 BLOCK 2	2016	409.20
FARM-DIRECT MARKETING LLC	20-0044-000 SECT-11 TWP-102 RNG-45 TR IN NW 1/4 OF SW 1/4 DESC AS: BEG AT PT IN EXTENDED N LN OF MEAD COURT 9' SELY OF C L OF CSTPM & O RR SPUR TRACK ICC #17; NELY = SD SPUR TRACK 140'; SELY 77'; M OR L, TO + 40' SWLY FROM N LN OF LOT 3 OF COUNTY AUDITOR'S PLAT OF LUVERNE OUTLOTS; SWLY TO PT IN N LN OF MEAD COURT EXTENDED; WLY ALG SD N LN OF MEAD COURT EXTENDED 87', M OR L, TO POB	2016	150.48
DAVID LEROY KELDERMAN	20-0126-000 CO AUD PLAT LUVERNE OUTLOTS 11-102-45 W 60' OF E 134' OF N 167' OF OUTLOT 2	2016	310.20
CHRISTINE HOLTER O - ROBERT J & DARLA FABER	20-0241-000 BARCK, ADAMS & HOWE'S ADDITION S 86.5' OF LOT 1 BLOCK 2	2016	389.40
DENNIS W J BAATZ	20-0267-000 BARCK, ADAMS & HOWE'S ADDITION W 63' OF LOT 4 BLOCK 4	2016	193.80
CHRISTOPHER M & MANDY L KOENIG	20-0514-000 BLUE MOUND SECOND ADDITION LOT 3 BLOCK 4	2016	1,130.80
DOUGLAS DEAN LAFRENZ	20-0722-000 CHARLES O HAWES' ADDITION LOT 5 BLOCK 3	2016	560.88
MATTHEW & HOLLI KLINGER O - DAVID & ROSANNE OLSON	20-0748-000 CHARLES O HAWES' ADDITION LOT 7 BLOCK 5	2016	1,238.60
JUAN J BONILLA OLMO	20-0961-000 P J KNISS ADDITION N 122' OF E 81 1/2' & S 20' OF W 70 3/4' OF E 1/2 OF N 1/2 OF LOT 4 BLOCK 3	2016	1,474.00
SARA MISTEREK	20-1000-000 P J KNISS ADDITION S 93' OF W 1/2 OF 9 & W 74' OF LOT 14 BLOCK 5	2016	650.10
JOSHUA GANUN	20-1069-000 ORIGINAL PLAT LOTS 1 THRU 5 AND W 18' OF LOT 6 BLOCK 2	2016	1,527.60
PAMELA JO BODE	20-1103-000 ORIGINAL PLAT LOTS 6 & 7 BLOCK 7	2016	204.60
JALAL K ALENEZY	20-1147-000 ORIGINAL PLAT S 70' OF LOTS 1 & 2 BLOCK 11	2016	317.84
ELVIRA HUMANZOR MEJIA & EULISES HUMANZOR MEJIA O - HARLAN R SIPMA	20-1261-000 RANDALL & HOLBERT'S ADDITION LOT 10 BLOCK 1	2016	156.20
JAMES M & PATRICIA A JOHNSON	20-1271-000 RANDALL & HOLBERT'S ADDITION N 41' OF W 78.6' OF LOT 8 BLOCK 2	2016	519.84
SUE KERNS	20-1332-000 H SNOOK ADDITION E 130' OF LOT 2 BLOCK 3	2016	352.00
MICHAEL J ARNSTON & PATRICIA A ARNSTON	20-1452-000 VAN EPS AND VARY'S ADDITION W 71.5' OF LOT 7 BLOCK 23	2016	332.20
MATTHEW JOE KRUEGER	20-1459-000 VAN EPS AND VARY'S ADDITION LOT 4 EXC N 72' BLOCK 25	2016	408.12
JAMIE JENSEN	20-1543-000 WARRAN AND KNISS' ADDITION S 1/2 OF LOTS 5 & 6 BLOCK 2	2016	203.50
ROSALIA BAUMGARD	20-1611-000 WARREN AND KNISS' ADDITION LOT 5 BLOCK 10	2016	734.16
RANDY PERKINS	20-1650-000 WARRAN AND KNISS' ADDITION LOTS 13 & 14 BLOCK 12 LOT 20 BLOCK 12	2016	1,030.56

STATE OF MINNESOTA  
COUNTY OF ROCK

Ashley Kurtz, being duly sworn, deposes, and says that she is the Auditor-Treasurer of the county of Rock; that she has examined the foregoing list, and knows the contents thereof; and that the same is true and correct.

(Official Seal)  
Ashley Kurtz, Auditor-Treasurer

Subscribed and sworn to before me this 6th day of February, 2017.

(Notary Seal)  
Notary Public, Rock County, Minnesota

(03-16)

## Rock County seeks pavement striping bids by April 7

NOTICE TO CONTRACTORS  
C.P. 067-401-018

Sealed proposals will be received by the Rock County Highway Department at Luverne, Minnesota until 11:00 A.M. on Friday, April 7th, 2017.

**READ CAREFULLY THE PROVISIONS FOR THE WAGE RATES AS CONTAINED IN THE SPECIAL PROVISIONS, AS THEY WILL AFFECT THIS PROJECT.**

Attention is called to the fact that the Contractor must comply with the **Special Equal Employment Opportunity Provisions** as contained in the Proposal.

Proposals will be opened and read publicly in the presence of the Rock County Highway Engineer at the Rock County Highway Building located at 1120 North Blue Mound Avenue in Luverne, Minnesota immediately following the hour set for receiving bids for the following Rock County Highway work. Bids will be awarded on Tuesday, April 18th, 2017 at the regular Rock County Board of Commissioners Meeting held in the Law Library at the Rock County Courthouse.

**The Quantities of Work are:** 2,083 gals of 4" ReflectORIZED Edgeline Pavement Marking Paint - White & 1,527 gals of 4" ReflectORIZED Centerline Pavement Marking Paint - Yellow.

Plans, specifications, and proposals may be viewed, and downloaded at [www.questcdn.com](http://www.questcdn.com) and at the Rock County Highway Department website, [www.co.rock.mn.us/highway](http://www.co.rock.mn.us/highway).

**The non-refundable cost for plans and one proposal will be \$30.00**

Bids must be accompanied by a certified check or corporate surety bond drawn in favor of the Rock County Treasurer in the amount of at least five percent (5%) of the proposal.

Sealed bids shall be clearly marked "**PROJECT NO. SAP 067-401-018**".

The Board of Rock County Commissioners reserves the right to reject any or all bids and to waive any defects therein.

Rock County is an Equal Opportunity/Affirmative Action Employer.

Mark R. Sehr, P.E.  
Rock County Highway Engineer  
(03-09, 03-16, 03-23)

## Mortgage foreclosure sale set for May 4

NOTICE OF MORTGAGE FORECLOSURE SALE  
THE RIGHT TO VERIFICATION OF THE DEBT AND IDENTITY OF THE ORIGINAL CREDITOR WITHIN THE TIME PROVIDED BY LAW IS NOT AFFECTED BY THIS ACTION.

NOTICE IS HEREBY GIVEN, that default has occurred in conditions of the following described mortgage:

DATE OF MORTGAGE: December 20, 2012  
MORTGAGOR: Travis Dammann, a single man.  
MORTGAGEE: Mortgage Electronic Registration Systems, Inc.  
DATE AND PLACE OF RECORDING: Recorded December 21, 2012 Rock County Recorder, Document No. 180873.

ASSIGNMENTS OF MORTGAGE: Assigned to: JPMorgan Chase Bank, National Association. Dated September 27, 2016 Recorded October 3, 2016, as Document No. 189217.

TRANSACTION AGENT: Mortgage Electronic Registration Systems, Inc.  
TRANSACTION AGENT'S MORTGAGE IDENTIFICATION NUMBER ON MORTGAGE: 10052100800053334

LENDER OR BROKER AND MORTGAGE ORIGINATOR STATED ON MORTGAGE: Plains Commerce Bank  
RESIDENTIAL MORTGAGE SERVICER: JPMorgan Chase Bank, National Association  
MORTGAGED PROPERTY ADDRESS: 413 Spring Street North, Luverne,

MN 56156

TAX PARCEL I.D. #: 201448000  
LEGAL DESCRIPTION OF PROPERTY:  
Lot 5 in Block 23 in Van Eps and Vary's Addition to the City of Luverne  
COUNTY IN WHICH PROPERTY IS LOCATED: Rock  
ORIGINAL PRINCIPAL AMOUNT OF MORTGAGE: \$80,070.00  
AMOUNT DUE AND CLAIMED TO BE DUE AS OF DATE OF NOTICE, INCLUDING TAXES, IF ANY, PAID BY MORTGAGEE: \$76,314.72

That prior to the commencement of this mortgage foreclosure proceeding Mortgagee/Assignee of Mortgagee complied with all notice requirements as required by statute; That no action or proceeding has been instituted at law or otherwise to recover the debt secured by said mortgage, or any part thereof;

PURSUANT to the power of sale contained in said mortgage, the above described property will be sold by the Sheriff of said county as follows:

DATE AND TIME OF SALE: May 4, 2017 at 10:00 AM  
PLACE OF SALE: Sheriff's Office, Main Entrance, Law Enforcement Center, 1000 North Blue Mound Avenue, Luverne, MN

to pay the debt then secured by said Mortgage, and taxes, if any, on said premises, and the costs and disbursements, including attorneys' fees allowed by law subject to redemption within six (6) months from the date of said sale by the mortgagor(s), their personal representatives or assigns unless reduced to Five (5) weeks under MN Stat. §580.07.

TIME AND DATE TO VACATE PROPERTY: If the real estate is an owner-occupied, single-family dwelling, unless otherwise provided by law, the date on or before which the mortgagor(s) must vacate the property if the mortgage is not reinstated under section 580.30 or the property is not redeemed under section 580.23 is 11:59 p.m. on November 6, 2017, unless that date falls on a weekend or legal holiday, in which case it is the next weekday, and unless the redemption period is reduced to 5 weeks under MN Stat. Secs. 580.07 or 582.032.  
MORTGAGOR(S) RELEASED FROM FINANCIAL OBLIGATION ON MORTGAGE: None

"THE TIME ALLOWED BY LAW FOR REDEMPTION BY THE MORTGAGOR, THE MORTGAGOR'S PERSONAL REPRESENTATIVES OR ASSIGNS, MAY BE REDUCED TO FIVE WEEKS IF A JUDICIAL ORDER IS ENTERED UNDER MINNESOTA STATUTES, SECTION 582.032, DETERMINING, AMONG OTHER THINGS, THAT THE MORTGAGED PREMISES ARE IMPROVED WITH A RESIDENTIAL DWELLING OF LESS THAN FIVE UNITS, ARE NOT PROPERTY USED IN AGRICULTURAL PRODUCTION, AND ARE ABANDONED."

Dated: March 1, 2017

JPMorgan Chase Bank, National Association  
Mortgagee/Assignee of Mortgagee

USSET, WEINGARDEN AND LIEBO, P.L.L.P.  
Attorneys for Mortgagee/Assignee of Mortgagee  
4500 Park Glen Road #300  
Minneapolis, MN 55416  
(952) 925-6888  
30 - 17-001222 FC

**THIS IS A COMMUNICATION FROM A DEBT COLLECTOR.**  
(03-9, 03-16, 03-23, 03-30, 04-6, 04-13)

Interested in Advertising in the Classifieds?  
**IT'S EASY!**  
Call **283-2333**  
or  
Stop by our offices at  
**117 W. Main in Luverne**

## Mortgage foreclosure sale set for May 4

NOTICE OF MORTGAGE FORECLOSURE SALE  
NOTICE IS HEREBY GIVEN THAT DEFAULT HAS OCCURRED IN THE CONDITIONS OF THE FOLLOWING DESCRIBED MORTGAGE:

DATE OF MORTGAGE: October 09, 2012  
ORIGINAL PRINCIPAL AMOUNT OF MORTGAGE: \$107,257.00  
MORTGAGOR(S): Jason Wicks and Shelley Wicks, Husband and Wife  
MORTGAGEE: Mortgage Electronic Registration Systems, Inc., as nominee for Premier Home Mortgage, Inc., its successors and/or assigns

DATE AND PLACE OF RECORDING:  
Recorded: October 11, 2012 Rock County Recorder  
Document Number: 180397

LOAN MODIFICATION:  
Dated: November 20, 2015  
Recorded: December 14, 2015  
Document Number: 187494

LOAN MODIFICATION:  
Dated: November 20, 2015  
Recorded: June 27, 2016  
Document Number: 188640

ASSIGNMENTS OF MORTGAGE:  
And assigned to: First Guaranty Mortgage Corporation

Dated: July 31, 2015  
Recorded: August 10, 2015 Rock County Recorder  
Document Number: 186773

Transaction Agent: Mortgage Electronic Registration Systems, Inc.  
Transaction Agent Mortgage Identification Number: 100966251208200245

Lender or Broker: Premier Home Mortgage, Inc.  
Residential Mortgage Servicer: RoundPoint Mortgage Servicing Corporation

Mortgage Originator: Not Applicable  
COUNTY IN WHICH PROPERTY IS LOCATED: Rock

Property Address: 404 N Estey St, Luverne, MN 56156-1464  
Tax Parcel ID Number: 20-1731-000

LEGAL DESCRIPTION OF PROPERTY: The W.90 feet of the S.77 feet of Lot 3 in Block 21 in Warren and Kniss' Second Addition to the City of Luverne, Rock County, Minnesota

AMOUNT DUE AND CLAIMED TO BE DUE AS OF DATE OF NOTICE: \$116,301.53

THAT all pre-foreclosure requirements have been complied with; that no action or proceeding has been instituted at law or otherwise to recover the debt secured by said mortgage, or any part thereof;

PURSUANT to the power of sale contained in said mortgage, the above-described property will be sold by the Sheriff of said county as follows:

DATE AND TIME OF SALE: May 04, 2017 at 10:00 AM  
PLACE OF SALE: Law Enforcement Center, Lobby, 1000 N. Blue Mound Ave., Luverne, Minnesota

to pay the debt secured by said mortgage and taxes, if any, on said premises and the costs and disbursements, including attorney fees allowed by law, subject to redemption within six (6) months from the date of said sale by the mortgagor(s), their personal representatives or assigns.

If the Mortgage is not reinstated under Minn. Stat. §580.30 or the property is not redeemed under Minn. Stat. §580.23, the Mortgagor must vacate the property on or before 11:59 p.m. on November 06, 2017, or the next business day if November 06, 2017 falls on a Saturday, Sunday or legal holiday.

Mortgagor(s) released from financial obligation: NONE

**THIS COMMUNICATION IS FROM A DEBT COLLECTOR ATTEMPTING TO COLLECT A DEBT. ANY INFORMATION OBTAINED WILL BE USED FOR THAT PURPOSE. THE RIGHT TO VERIFICATION OF THE DEBT AND IDENTITY OF THE ORIGINAL CREDITOR WITHIN THE TIME PROVIDED BY LAW IS NOT AFFECTED BY THIS ACTION.**

THE TIME ALLOWED BY LAW FOR REDEMPTION BY THE MORTGAGOR, THE MORTGAGOR'S PERSONAL REPRESENTATIVES OR ASSIGNS, MAY BE REDUCED TO FIVE WEEKS IF A JUDICIAL ORDER IS ENTERED UNDER MINNESOTA STATUTES, SECTION 582.032, DETERMINING, AMONG OTHER THINGS, THAT THE MORTGAGED PREMISES ARE IMPROVED WITH A RESIDENTIAL DWELLING OF LESS THAN FIVE UNITS, ARE NOT PROPERTY USED IN AGRICULTURAL PRODUCTION, AND ARE ABANDONED.

DATED: March 09, 2017  
ASSIGNEE OF MORTGAGEE: First Guaranty Mortgage Corporation

Wilford, Geske & Cook P.A.  
Attorneys for Assignee of Mortgagee

7616 Currell Blvd Ste 200  
Woodbury, MN 55125-2296  
(651) 209-3300  
File Number: 033794F02

(03-16, 03-23, 03-30, 04-06, 04-13, 04-20)

Sealed proposals will be received by the Rock County Highway Department at Luverne, Minnesota until 11:00 A.M. on Friday, March 31, 2017.

**READ CAREFULLY THE PROVISIONS FOR THE WAGE RATES AS CONTAINED IN THE PROVISIONS, AS THEY WILL AFFECT THIS PROJECT.**

Attention is called to the fact that the contractor must comply with the **Special Equal Employment Opportunity Provisions** as contained in this Proposal.

Proposals will be opened and read publicly in the presence of the Rock County Highway Engineer at the Rock County Highway Building located at 1120 North Blue Mound Avenue in Luverne, MN immediately following the hour set for receiving bids for the following Rock County Highway work. Bids will be awarded on Tuesday, April 4, 2017 at the regular Board of Commissioners Meeting.

Construction of Bridge 67570, a 127' Concrete Slab Span. The project is located 1 Mile South of Interstate 90 on CSAH 17 over The Beaver Creek.

The major items of work are: 87 Cu. Yd. Structural Concrete; 4,547 Sq. Ft. of Bridge Slab Concrete; 258 Lin. Ft. of Type F Railing Concrete; 143 Sq. Yds. Bridge Approach Panels; 72,490 Pounds of Reinforcement Bars (Epoxy Coated); 372 Cu. Yd. Random Riprap (Class III); 420 Lin. Ft. 12" - C-I-P Piliings 2 - 12" C-I-P Test Piles 80 Ft. Long; 560 Lin. Ft. 16" - C-I-P Piling; 2 - 16" C-I-P Test Piles 80 Ft. Long; and 574 Tons Bituminous Wear and Non-Wear Mix.

Plans, specifications, and proposals may be viewed, and downloaded at [www.questcdn.com](http://www.questcdn.com) and at the Rock County Highway Department website, [www.co.rock.mn.us/highway](http://www.co.rock.mn.us/highway). Questions may be directed to the office of the Rock County Highway Engineer, 1120 North Blue Mound Avenue, P.O. Box 808, Luverne, Minnesota 56156-0808 / (507)283-5010.

**The non-refundable cost for plans and one proposal will be \$30.00.**

Bids must be accompanied by a certified check or corporate surety bond drawn in favor of the Rock County Treasurer in the amount of at least five percent (5%) of the proposal.

Sealed bids shall be clearly marked "**PROJECT NO. S.A.P. 067-617-011**".

The Board of Rock County Commissioners reserves the right to reject any or all bids and to waive any defects therein.

Rock County is an Equal Opportunity/ Affirmative Action Employer  
Mark R. Sehr, P.E.  
Rock County Highway Engineer  
(03-02, 03-09, 03-16)

Interested in Advertising in the Classifieds?  
**IT'S EASY!**  
Call **283-2333**  
or  
Stop by our offices at  
**117 W. Main in Luverne**

(03-16, 03-23, 03-30, 04-06, 04-13, 04-20)

## Rock County seeks sealed proposals by March 31

NOTICE TO CONTRACTORS  
BRIDGE REPLACEMENT AND APPROACH GRADING / S.A.P. 067-617-011  
BIDS CLOSE AT 11:00 A.M. MARCH 31, 2017  
LUVERNE, MINNESOTA

Sealed proposals will be received by the Rock County Highway Department at Luverne, Minnesota until 11:00 A.M. on Friday, March 31, 2017.

**READ CAREFULLY THE PROVISIONS FOR THE WAGE RATES AS CONTAINED IN THE PROVISIONS, AS THEY WILL AFFECT THIS PROJECT.**

Attention is called to the fact that the contractor must comply with the **Special Equal Employment Opportunity Provisions** as contained in this Proposal.

Proposals will be opened and read publicly in the presence of the Rock County Highway Engineer at the Rock County Highway Building located at 1120 North Blue Mound Avenue in Luverne, MN immediately following the hour set for receiving bids for the following Rock County Highway work. Bids will be awarded on Tuesday, April 4, 2017 at the regular Board of Commissioners Meeting.

Construction of Bridge 67570, a 127' Concrete Slab Span. The project is located 1 Mile South of Interstate 90 on CSAH 17 over The Beaver Creek.

The major items of work are: 87 Cu. Yd. Structural Concrete; 4,547 Sq. Ft. of Bridge Slab Concrete; 258 Lin. Ft. of Type F Railing Concrete; 143 Sq. Yds. Bridge Approach Panels; 72,490 Pounds of Reinforcement Bars (Epoxy Coated); 372 Cu. Yd. Random Riprap (Class III); 420 Lin. Ft. 12" - C-I-P Piliings 2 - 12" C-I-P Test Piles 80 Ft. Long; 560 Lin. Ft. 16" - C-I-P Piling; 2 - 16" C-I-P Test Piles 80 Ft. Long; and 574 Tons Bituminous Wear and Non-Wear Mix.

Plans, specifications, and proposals may be viewed, and downloaded at [www.questcdn.com](http://www.questcdn.com) and at the Rock County Highway Department website, [www.co.rock.mn.us/highway](http://www.co.rock.mn.us/highway). Questions may be directed to the office of the Rock County Highway Engineer, 1120 North Blue Mound Avenue, P.O. Box 808, Luverne, Minnesota 56156-0808 / (507)283-5010.

**The non-refundable cost for plans and one proposal will be \$30.00.**

Bids must be accompanied by a certified check or corporate surety bond drawn in favor of the Rock County Treasurer in the amount of at least five percent (5%) of the proposal.

Sealed bids shall be clearly marked "**PROJECT NO. S.A.P. 067-617-011**".

The Board of Rock County Commissioners reserves the right to reject any or all bids and to waive any defects therein.

Rock County is an Equal Opportunity/ Affirmative Action Employer  
Mark R. Sehr, P.E.  
Rock County Highway Engineer  
(03-02, 03-09, 03-16)

## Road and bridge replacement information meeting March 21

NOTICE OF PUBLIC INFORMATION MEETING

An open meeting will be held to discuss the road and bridge replacement program for the transportation system of Rock County. The meeting will be at the Rock County Library Basement Meeting Room, 201 West Main Street, in Luverne, MN Tuesday, March 21 beginning at 1:30 p.m.

This public informational meeting will be held at the Rock County Library. Any individual, group or agency wishing information is urged to attend and participate in this meeting. The meeting is to provide information on the planning, programming and schedule of work on the County Highway System.

Mark R. Sehr  
Rock County Highway Engineer  
(03-09, 03-16)

## Central Specialties applies for conditional use permit

### Notice of Public Hearing for Conditional Use Permit for Central Specialties.

Pursuant to the Rock County Zoning Ordinance, notice is hereby given by the Rock County Planning and Zoning Commission that a public hearing will be held at the Rock County Law Enforcement Center located at 1000 North Blue Mound Avenue, Luverne, Minnesota at 7:30 p.m. Monday, March 27, 2017. The purpose of this hearing is to rule on the application for Conditional Use Permit for the following:

Applicant: Central Specialties  
Property Owner: Henning Construction  
Location: W 1/2 of the SE 1/4 of Section 35 of Mound Township, T103, R45W, Rock County, Minnesota  
Conditional Use: Placement and operation of a temporary hot mix asphalt plant to be placed in the Henning Construction Gravel Pit.  
Zoning District: A-1, Limited Agriculture

By Order of the Rock County Planning and Zoning Commission

Eric Hartman, Zoning Administrator

311 W. Gabrielson Road

Luverne, MN 56156

507-283-8862, Extension 4

(03-16, 03-23)

## Mortgage foreclosure sale set for April 20

### NOTICE OF MORTGAGE FORECLOSURE SALE

NOTICE IS HEREBY GIVEN that default has occurred in the conditions of the following described mortgage:

DATE OF MORTGAGE: November 24, 2014  
ORIGINAL PRINCIPAL AMOUNT OF MORTGAGE: \$45,500.00  
MORTGAGOR(S): Lisa Reisgies, Unmarried  
MORTGAGEE: U.S. Bank National Association  
DATE AND PLACE OF RECORDING:

Recorded: December 24, 2014 Rock County Recorder

Document Number: 185212

Transaction Agent: Not Applicable  
Transaction Agent Mortgage Identification Number: Not Applicable  
Lender or Broker: U.S. Bank National Association

Residential Mortgage Servicer: U.S. Bank National Association

Mortgage Originator: Not Applicable

COUNTY IN WHICH PROPERTY IS LOCATED: Rock

Property Address: 335 E Minnesota Ave, Steen, MN 56173-9645

Tax Parcel ID Number: 19-0094-100

LEGAL DESCRIPTION OF PROPERTY: A parcel of land commencing at the Northwest corner of the Northeast Quarter (NE1/4) of Section Thirty-two (32) in Township One Hundred One (101) North, Range Forty-five (45) West of the 5th P.M.; thence South 726.5 feet; thence East 324 feet to the place of beginning; thence at right angles in a Southerly direction 119 feet; thence at right angles in an Easterly direction 120 feet; thence at right angles in a Northerly direction 119 feet; thence at right angles in a Westerly direction a distance of 120 feet to the point of beginning.

Also described as the East Half (E1/2) of Lot Two (2) and all of Lots Three (3) and Four (4) in Block Five (5) in the Unrecorded Plat of Dries Bosch Addition to the City of Steen, Minnesota

AMOUNT DUE AND CLAIMED TO BE DUE AS OF DATE OF NOTICE: \$50,364.68

THAT all pre-foreclosure requirements have been complied with; that no action or proceeding has been instituted at law or otherwise to recover the debt secured by said mortgage, or any part thereof;

PURSUANT to the power of sale contained in said mortgage, the above-described property will be sold by the Sheriff of said county as follows:

DATE AND TIME OF SALE: April 20, 2017 at 10:00 AM

PLACE OF SALE: Law Enforcement Center, Lobby, 1000 N. Blue Mound Ave., Luverne, Minnesota

to pay the debt secured by said mortgage and taxes, if any, on said premises and the costs and disbursements, including attorney fees allowed by law, subject to redemption within six (6) months from the date of said sale by the mortgagor(s), their personal representatives or assigns.

If the Mortgage is not reinstated under Minn. Stat. §580.30 or the property is not redeemed under Minn. Stat. §580.23, the Mortgagor must vacate the property on or before 11:59 p.m. on October 20, 2017, or the next business day if October 20, 2017 falls on a Saturday, Sunday or legal holiday.

Mortgagor(s) released from financial obligation: NONE

**THIS COMMUNICATION IS FROM A DEBT COLLECTOR ATTEMPTING TO COLLECT A DEBT. ANY INFORMATION OBTAINED WILL BE USED FOR THAT PURPOSE. THE RIGHT TO VERIFICATION OF THE DEBT AND IDENTITY OF THE ORIGINAL CREDITOR WITHIN THE TIME PROVIDED BY LAW IS NOT AFFECTED BY THIS ACTION.**

**THE TIME ALLOWED BY LAW FOR REDEMPTION BY THE MORTGAGOR, THE MORTGAGOR'S PERSONAL REPRESENTATIVES OR ASSIGNS, MAY BE REDUCED TO FIVE WEEKS IF A JUDICIAL ORDER IS ENTERED UNDER MINNESOTA STATUTES, SECTION 582.032, DETERMINING, AMONG OTHER THINGS, THAT THE MORTGAGED PREMISES ARE IMPROVED WITH A RESIDENTIAL DWELLING OF LESS THAN FIVE UNITS, ARE NOT PROPERTY USED IN AGRICULTURAL PRODUCTION, AND ARE ABANDONED.**

DATED: February 17, 2017

MORTGAGEE: U.S. Bank, National Association

Wilford, Geske & Cook P.A.

Attorneys for Mortgagee

7616 Currell Blvd Ste 200

Woodbury, MN 55125-2296

(651) 209-3300

File Number: 036880F01

(03-02, 03-09, 03-16, 03-23, 03-30, 04-06)

## Mortgage foreclosure sale set for April 20

### NOTICE OF MORTGAGE FORECLOSURE SALE

**THE RIGHT TO VERIFICATION OF THE DEBT AND IDENTITY OF THE ORIGINAL CREDITOR WITHIN THE TIME PROVIDED BY LAW IS NOT AFFECTED BY THIS ACTION.**

NOTICE IS HEREBY GIVEN, that default has occurred in conditions of the following described mortgage:

DATE OF MORTGAGE: December 23, 2015

MORTGAGOR: Tyllar Kracht, a single person.

MORTGAGEE: Mortgage Electronic Registration Systems, Inc.

DATE AND PLACE OF RECORDING: Recorded December 23, 2015 Rock County Recorder, Document No. 187566.

ASSIGNMENTS OF MORTGAGE: Assigned to: JPMorgan Chase Bank, National Association. Dated December 1, 2016 Recorded December 7, 2016, as Document No. 189667.

TRANSACTION AGENT: Mortgage Electronic Registration Systems, Inc.

TRANSACTION AGENT'S MORTGAGE IDENTIFICATION NUMBER ON

MORTGAGE: 100031200012614498

LENDER OR BROKER AND MORTGAGE ORIGINATOR STATED ON

MORTGAGE: Wintrust Mortgage, a division of Barrington Bank and Trust Co., N.A.

RESIDENTIAL MORTGAGE SERVICER: JPMorgan Chase Bank, National Association

MORTGAGED PROPERTY ADDRESS: 241 Minnesota Avenue East, Steen, MN 56173

TAX PARCEL I.D. #: 19-0098-000

LEGAL DESCRIPTION OF PROPERTY:

A tract of land commencing at the Northwest corner of the NE 1/4 of Section 32, Township 101 North, Range 45 West, of the 5th P.M.; thence South 726.5 feet; thence East 96 feet to the place of beginning; thence South 119 feet; thence East 96 feet; thence North 119 feet; thence West 96 feet to the place of beginning; otherwise known as Lots 8 and 9 in Block 7 of the unrecorded plat of Dries Bosch Addition to the City of Steen, Rock County, Minnesota.

COUNTY IN WHICH PROPERTY IS LOCATED: Rock  
ORIGINAL PRINCIPAL AMOUNT OF MORTGAGE: \$81,720.00  
AMOUNT DUE AND CLAIMED TO BE DUE AS OF DATE OF NOTICE, INCLUDING TAXES, IF ANY, PAID BY MORTGAGEE: \$82,773.53

That prior to the commencement of this mortgage foreclosure proceeding Mortgagee/Assignee of Mortgagee complied with all notice requirements as required by statute; That no action or proceeding has been instituted at law or otherwise to recover the debt secured by said mortgage, or any part thereof;

PURSUANT to the power of sale contained in said mortgage, the above described property will be sold by the Sheriff of said county as follows:

DATE AND TIME OF SALE: April 20, 2017 at 10:00 AM

PLACE OF SALE: Sheriff's Office, Main Entrance, Law Enforcement Center, 1000 North Blue Mound Avenue, Luverne, MN

to pay the debt then secured by said Mortgage, and taxes, if any, on said premises, and the costs and disbursements, including attorneys' fees allowed by law subject to redemption within six (6) months from the date of said sale by the mortgagor(s), their personal representatives or assigns unless reduced to Five (5) weeks under MN Stat. §580.07.

TIME AND DATE TO VACATE PROPERTY: If the real estate is an owner-occupied, single-family dwelling, unless otherwise provided by law, the date on or before which the mortgagor(s) must vacate the property if the mortgage is not reinstated under section 580.30 or the property is not redeemed under section 580.23 is 11:59 p.m. on October 20, 2017, unless that date falls on a weekend or legal holiday, in which case it is the next weekday, and unless the redemption period is reduced to 5 weeks under MN Stat. Secs. 580.07 or 582.032.

MORTGAGOR(S) RELEASED FROM FINANCIAL OBLIGATION ON MORTGAGE: None  
"THE TIME ALLOWED BY LAW FOR REDEMPTION BY THE MORTGAGOR, THE MORTGAGOR'S PERSONAL REPRESENTATIVES OR ASSIGNS, MAY BE REDUCED TO FIVE WEEKS IF A JUDICIAL ORDER IS ENTERED UNDER MINNESOTA STATUTES, SECTION 582.032, DETERMINING, AMONG OTHER THINGS, THAT THE MORTGAGED PREMISES ARE IMPROVED WITH A RESIDENTIAL DWELLING OF LESS THAN FIVE UNITS, ARE NOT PROPERTY USED IN AGRICULTURAL PRODUCTION, AND ARE ABANDONED."

Dated: February 13, 2017

JPMorgan Chase Bank, National Association

Mortgagee/Assignee of Mortgagee

USSET, WEINGARDEN AND LIEBO, P.L.L.P.

Attorneys for Mortgagee/Assignee of Mortgagee

4500 Park Glen Road #300

Minneapolis, MN 55416

(952) 925-6888

30 - 17-001420 FC

THIS IS A COMMUNICATION FROM A DEBT COLLECTOR.

(02-23, 03-02, 03-09, 03-16, 03-23, 03-30)

## Bremik Materials Inc. applies for conditional use permit

### Notice of Public Hearing for Conditional Use Permit for Bremik Materials Inc.

Pursuant to the Rock County Zoning Ordinance, notice is hereby given by the Rock County Planning and Zoning Commission that a public hearing will be held at the Rock County Law Enforcement Center located at 1000 North Blue Mound Avenue, Luverne, Minnesota at 7:40 p.m. Monday, March 27, 2017. The purpose of this hearing is to rule on the application for Conditional Use Permit for the following:

Applicant: Bremik Materials, Inc.  
Property Owner: Southern Minnesota Land Partnership, LLP  
Location: E 1/2 of the NW 1/4 of Section 23 of Denver Township, T104N, R45W, Rock County, Minnesota

Conditional Use: Extraction, crushing, processing, and stockpiling of quarried aggregates

Zoning District: A-2, General Agriculture

By Order of the Rock County Planning and Zoning Commission

Eric Hartman, Zoning Administrator

311 W. Gabrielson Road

Luverne, MN 56156

507-283-8862, Extension 4

(03-16, 03-23)

## Rock County Commissioners meet Jan. 24

**Herreid Board Room 9:00 A.M.**

**Rock County Courthouse January 24, 2017**

The meeting was called to order by Chair Williamson with all Commissioners present; the Pledge of Allegiance was recited.

Motion by Burger, seconded by Reisch, to approve the January 24, 2017 County Board agenda, declared carried on a voice vote.

Motion by Thompson, seconded by Reisch, to approve the January 3, 2017 County Board minutes, declared carried on a voice vote.

City of Magnolia Mayor Dennis Madison and Council member Gary Lee, presented a request for (2) dynamic speeds to be placed on the east and west side of the city on CSAH 4. There was discussion regarding which type of sign to be used, an electric powered unit or solar powered unit and it was determined that the solar powered unit would be the best option; the Engineer estimated the cost to be \$3,000 - \$5,000 per sign depending on the size. Motion by Reisch, seconded by Overgaard, to approve the purchase of (2) solar powered dynamic speed signs and authorized the Engineer to determine the size and installation of the signs, declared carried on a voice vote.

Mark Sehr, Engineer, informed the County Board of a tractor lease option from John Deere on the state bid; the 8-month lease agreement cost is \$1.00 per hour to be used less than 100 hours. Sehr stated the current tractors (3) are 10-11 years old. Motion by Reisch, seconded by Williamson, to authorize the lease arrangements for (3) tractors and sell the existing fleet, declared carried on a voice vote.

The Engineer informed the County Board of recent road damages on County Road 52 in Martin Township due to heavy weight of equipment and soft road conditions; the Engineer requested the operator to postpone his task until the road condition changed, however the request was ignored. The estimated cost of repair is \$6,000 - \$8,000 in gravel and grading. The issue was presented as information only with no action taken.

Ashley Kurtz, Auditor/Treasurer, presented the claims and \$675.00 in per diems; motion by Reisch, seconded by Thompson, to approve the claims and per diems, declared carried on a voice vote. A complete listing of the claims is available upon request at the Auditor/Treasurer's Office.

Claims Listing - January 24, 2017	
A.C.E. OF SOUTHWEST MINNESOTA	3,923.25
CHS EASTERN FARMERS COOP	3,931.91
COMPUTER PROFESSIONALS UNLIMITED INC	6,062.00
EXPRESSWAY-LUVERNE	6,764.79
FIDLAR TECHNOLOGIES INC	2,508.40
FRONTIER PRECISION INC	28,999.10
HEAT TACTICAL TEAM	2,195.00
KETTERLING SERVICES INC	7,905.54
LUVERNE/CITY OF	6,077.88
LYON COUNTY LANDFILL	15,797.00
MN COUNTIES INTERGOVERNMENTAL TRUST	4,387.88
MN COUNTIES INTERGOVERNMENTAL TRUST	181,326.52
MN SHERIFFS ASSN	2,235.00
POWERPLAN	2,336.55
ROCK COUNTY OPPORTUNITIES	2,914.65
SANFORD HEALTH	2,500.00
SWPTSA	3,978.00
TOLLEFSON PUBLISHING	2,602.20
120 payment less than 2000	51,043.20
TOTAL	337,488.87

The County Board was in receipt of the Fund Balance report and there was a brief discussion regarding the Road & Bridge fund and as to whether or not to transfer cash from investments, the Auditor/Treasurer stated she would investigate further. Motion by Thompson, seconded by Burger, to approve the Fund Balance report, declared carried on a voice vote.

Motion by Burger, seconded by Williamson, to approve re-issuance of a lost warrant #70704 for \$41.56, declared carried on a voice vote.

The County Board was informed of the second half payment for PSAP equipment of \$59,411.07; the seconded half expenditure was approved on 11/08/2016.

Motion by Thompson, seconded by Overgaard, to authorize the Administrator's Office and Personnel Committee of the County Board (Reisch & Burger) to develop request for proposal (RFP) to select a vendor to conduct a comparable worth study, declared carried on a voice vote.

The County Board was informed that the Chamber of Commerce is seeking individuals for the composition of a Rock County Selective Service Board; the process is an application based process with the appointment made by the Governor Dayton.

Motion by Burger, seconded by Reisch, to approve the re-location of the Rock County Hall of Fame display to be moved to the Rock County Historical Center, declared carried on a voice vote.

Motion by Thompson, seconded by Burger, to appoint Ron Boyenga as the lay person designee to the Southwest Health & Human Services Board, declared carried on a voice vote.

There was a brief discussion regarding technology needs for the commissioners, no action was taken.

Commissioner Thompson and Commissioner Overgaard stated that they completed Board of Equalization certification, presented as information only.

The County Board discussed attendance at the AMC Legislative Conference; presented as information only.

Commissioner Reisch stated that he had attended the following meetings: Southwest Minnesota Opportunity Council, Rock/Nobles Community Corrections and Luverne City/County Liaison.

Commissioner Thompson stated that she had attended the following meetings: Blue Mound State Park Citizens Advisory Group, Southwest Health & Human Services, and Regional Development Commission.

Commissioner Burger stated that he had attended the following meetings: Southwest Mental Health, Southwest Minnesota Health & Human Services and Rock/Nobles Community Corrections.

Commissioner Overgaard stated that he had attended the following meetings: Clean Water Local Advisory, Magnolia City Council meeting, Vienna Township meeting, AMC District 8 Land Use, Rock County Fair Board, Pork Producer banquet, Luverne City/County Liaison, and a Southwest Regional Solid Waste.

Commissioner Williamson stated that he had attended a Soil & Water Board meeting and Southwest Mental Health and that February 6th is the Rock County Cattlemen's Banquet.

The Administrator informed the County Board that the county was in receipt of a loan payment of \$13,000 from the Rock County Fair Board and that a listing of tax forfeited properties will be available soon. Also provided a legislative update stating that Representative Schomacker has submitted a bill requesting funds for a road project in Martin Township.

With no further business to come before the County Board, the meeting was declared adjourned.

(03-09)

# Star Herald CLASSIFIEDS

### WINDOWS

We custom build and install Energy Star Therm-O-Loc Windows. Call Mike at Adrian Glass for a free in-home demonstration and estimate. 101 E. Pearl, Adrian, MN 56110. 507-483-2228 or 605-770-7677 or email mbyler@santel.net. (tc)

### RENTALS

For Rent: one-bedroom furnished upstairs apartment with car port. No pets allowed. References required. Call 507-283-9720. (tc)

Mobile Home for rent in Luverne: two-bedroom, one-bath, all appliances, water and sewer included. Call 605-366-7695. (2.23-3.16)

For Rent: one-bedroom house for rent in Beaver Creek \$300 a month, which includes water, sewer, and garbage. Deposit and references required. Call 507-920-7738. (3.16-4.5)

### SHOP SPACE FOR LEASE in Luverne

Good location. Available July 1. Approximately 2,000 sq. ft. Can build to suit needs

507-360-7844

### AGRICULTURAL

Tree stump grinding: I also have yard dirt, landscaping rock, and gravel pea rock. I have trucks, so I can deliver. Call Wayne Biever at 507-227-4521 or 507-283-4614. (3.12-4.2)

We have several crews of rock pickers and we also do any type of farm work. Call 712-943-2084. (tc)

### MISCELLANEOUS

HAVE A UNIQUE SERVICE OR BUSINESS? Get the word out to over 1.4 million households. Call WIDE AREA CLASSIFIEDS today, 507-359-7326. (tc)

### SERVICES



### RiverBend CSA Garden

10 memberships available  
13 weeks of vegetables grown here in Luverne for you.  
Sign-up by May 1.  
Contact Farmer Berty for info  
Cell: 605-681-7823

## BLUE MOUND TOWER



Apartments available!

Luverne HRA • Blue Mound Tower  
216 McKenzie Street  
Luverne, MN 56156

507-283-4922

- All Ages Welcome
- Close to Senior Dining
- Close to Minnesota West College
- Income Based
- Handicap Accessible
- Pet Friendly
- Smoke Free
- Secure Entry System
- On Site Laundry
- Utilities included

www.Star-Herald.com

### EMPLOYMENT

The Luverne United Methodist Church is seeking a Children's Ministry Coordinator for 20 hours per week. This is a high energy, fulfilling position which works with our Family Ministry Team to provide children's programming. Coordinator will have a strong team and leadership available to them. Please send resume to 109 North Freeman Ave. Luverne MN 56156 (3.12-3.29)

### EMPLOYMENT

Nursing Assistant: Parkview Manor has openings for part-time nursing aides with benefits to include: health insurance, public retirement plan, and holiday pay. New wages \$11.90/ hr. or more with experience. \$2000 scholarships available for students. Will provide training or pay for experience. Contact Darnell Krull, 308 Sherman Ave. Ellsworth, MN 56129 or call 507-967-2388. (tc)

### EMPLOYMENT

FamilyU, Luverne's School Aged Child Care program, is seeking applicants for a part-time Child Care Assistant for Summer 2017, and possibly school year after-school care. Qualified candidates must be a high school sophomore or older, have experience working with K-5 children, and demonstrate positive behavior management skills. Weekday hours vary from 15-40 hours per week, June 1 through August 25. Apply at Luverne Community Education, 709 N Kniss Ave, Luverne. Application deadline - April 10. EOE (3.12-3.29)

### EMPLOYMENT

Schomacker Cleaning seeks a reliable carpet cleaning technician for 30-40 hours per week. Shifts include days and weekends. No previous experience needed. Applicant must be self motivated, possess strong work ethic, demonstrate customer service skills, be reliable and prompt. Past sales experience can be very beneficial. If you're looking for fast-paced, ever changing work, this position may be for you. Responsibilities include providing superior carpet cleaning and building professional relationships with customers. REQUIREMENTS Valid driver license Smart phone use with internet access Must be organized and able to multi-task Friendly and professional attitude Dependable and reliable Fast learner Team player Candidates must be able pass a drug test, motor vehicle record check and criminal background check Apply online at Schomackers.com or at the Schomacker Flooring and Appliance at 202 E Main St. Luverne MN (2.26-3.16)

### EMPLOYMENT

Adrian Public School is currently seeking applicants for a Long Term Substitute Special Education Teacher (SLD) to work at the High School through the end of the 2017 school year. (2.26-3.16)

New Prairie Insulation of Beaver Creek has a full-time Insulation Installer position available. Monday through Friday, health insurance, vacation, holiday, bonus opportunities. Will train. Call Dean at 605-376-3006 or 507-673-2548. (tc)

### CARDS OF THANKS

The family of Edna De Wilde thanks you for your many acts of kindness shown in the recent death of our mother. Thank you to the Edgebrook Care Center, Pipestone County Medical Center and Pipestone Hospice House for your part in caring for our Mother.

**Earl and Sherry De Wilde  
Elaine and Ray Hansen  
Verlyn and Barb De Wilde  
Gloria and Loren Kassel**  
(3.16-3.19)

My sincere thank you to all the wonderful staff at the Luverne and Sioux Falls Hospitals for the excellent care I received while there. Thank you also to Dr. Diane Kennedy and to Pastor Ron from Grace Lutheran for his visits.

**Bonnie Moeller**  
(3.12-3.16)

### HELP WANTED

**CHS Eastern Farmers Luverne, MN** is looking for a full-time **semi-feed truck driver**. Must have a CDL and clean driving record. CHS Eastern Farmers offers a competitive pay and benefits package. **Apply by calling Gary at 507-283-4418 to set up an appointment.**



The Tuff Memorial Home has an opening in Dietary, part-time hours, 11:30am-7p.m. (24 hours a week) If interested, contact Alex Dysthe at 507-962-3275 or email adysthe@tuffmemorialhome.com.

**Competitive Wage  
Friendly Atmosphere**



**TUFF MEMORIAL HOME**  
"A Home With a Heart"

### SON-D-FARMS ADRIAN

is hiring General Farm, Hog, Field Work, Truck Driver, Maintenance person, Farm Shop Mechanic & Farm Delivery Person. Experience wanted but willing to train. PTO benefits. Call (507) 483-2245, 370-1590 or e-mail office@sondfarms.com

● CALL TODAY! ●  
Call RICK or CHANTEL to advertise in the Star Herald 283-2333  
● CALL TODAY! ●

## NEED EXTRA CASH?

**LIVERNE**  
Announcer Carriers  
needed

Call  
**283-2333**

or stop in at the Announcer office  
(ask for Jenn)



### HELP WANTED:

- CDL DRIVER - home nightly
- Farm Labor - cattle and hogs
- General Labor

Immediate openings, full and part-time, flexible hours, home nightly and competitive pay with benefits. Willing to train.

**Hokeness Grain & Livestock, Inc.**

Adrian, MN area  
Please call/text:  
Sara: 605-366-7083  
Todd: 507-227-8802

### Help Wanted Internet Installer/Repair Technician

Lismore Cooperative Telephone Company is seeking a full-time individual to become a member of our team providing hybrid broadband service in and around Lismore, MN.

The work will include installation of our new wireless internet, maintenance and repair. Applicant must be comfortable with heights and have the ability to work in a customer orientated, fast-paced environment. Submit resume and letter of application to: Lismore Cooperative Telephone Company, PO Box 127, Lismore, MN 56155. Email: info@lismoretele.com by February 20 or until position is filled.



**Lismore Coop Telephone Co.**  
Lismore, MN  
(507)472-8748

## HELP WANTED EQUIPMENT OPERATOR

### ROCK COUNTY HIGHWAY DEPARTMENT

The Rock County Administrator is now accepting applications for the position of **Equipment Operator** at the **Rock County Highway Department** until March 30, 2017 at 5:00 pm. Applicants must possess the following: a High School Diploma or equivalent, the ability to obtain a MN Class "A" commercial driver's license within six months and a combination equivalent to 2-4 years experience in the operation and service of a variety of heavy and light highway maintenance, construction, or related equipment. Applicants are required to participate in county's random drug and alcohol testing program and are required to successfully complete a pre-employment drug and alcohol test. The position will be full time with a beginning hourly wage range of \$16.68-\$18.04 DOQ with full paid benefits to include health and life insurances, health savings account and pension. A detailed job description and an application form for this position can be accessed at <http://www.co.rock.mn.us/employment.html> or by emailing [susan.skattum@co.rock.mn.us](mailto:susan.skattum@co.rock.mn.us) or by phone **507-283-5065**.  
*An Equal Opportunity Employer*



Minnesota West Community and Technical College is accepting applications for an

- Electrician Faculty**  
Full-time in Jackson, MN
- Carpentry Faculty**  
Full-time in Pipestone, MN

This is a full-time 171 day academic year position which offers a competitive salary and excellent benefits. For detailed information and application procedures, please visit <http://www.mnwest.edu/hr/employment>

Minnesota West Community and Technical College is a comprehensive community and technical college with five southwestern Minnesota campuses: Canby, Granite Falls, Jackson, Pipestone and Worthington and centers in Luverne and Marshall. Students have the opportunity to earn an Associate Degree, Diploma or Certificate in more than 60 disciplines. [www.mnwest.edu](http://www.mnwest.edu)

Minnesota West is a member of the Minnesota State Colleges and Universities (MnSCU) system and is an Equal Opportunity Employer/Educator.



## Minnesota Classified Advertising Network

### EMPLOYMENT

#### RAILROAD VEGETATION CONTROL:

Full-time traveling opportunity, 60-80 hours/week, \$13-\$15/hour starting, meal allowance, paid lodging, 95% paid health/dental, 401(k) & paid time off. RAW, Inc. in Cooperstown, ND 888/700-0292 info@rawapplicators.com www.rawapplicators.com

#### KMS PUBLIC SCHOOLS

seeking FT long-term Math/English substitute teacher beginning April. Apply: www.kms.k12.mn.us; or letter of interest, resume, transcripts, teacher license, three letters of recommendation to: KMS, Box 168, Kerkhoven, MN 56252

#### PRODUCTION MANAGER

for Frozen Products in Finley, ND needed! Competitive compensation package with opportunity for growth. If interested, please go to [www.hopefoodsllc.com](http://www.hopefoodsllc.com) for full details

### HELP WANTED - DRIVERS

#### CDL A DRIVERS

\$7,500 sign-on-bonus. Medical benefits day 1 & earn \$65k+ in your first year!!! Guaranteed pay. Profit sharing, 401k with company match & more! Call Jim Robbins 253/512-1887 or go to [www.joinmclane.com/minnesota](http://www.joinmclane.com/minnesota)

### FOR SALE BY OWNER

#### 10,000 SF BUILDING

in Rothsay, MN. Has over 4,000 SF commercial space, a 12-unit Inn, plus living quarters. View at [www.videotour412.com](http://www.videotour412.com) for details

### CLASS ACTION LAWSUIT

#### IF YOU OR

a loved one has an IVC Blood Clot Filter, you may be at risk and entitled to a cash settlement. Call Attorney C.J. 888/402-5552 [www.kishishlaw.com](http://www.kishishlaw.com)

### FARM EQUIPMENT

#### OUR SPORTSMEN WILL

pay Top \$\$\$ to hunt your land. Call for a free Base Camp Leasing info packet & quote: 866/309-1507 [www.BaseCampLeasing.com](http://www.BaseCampLeasing.com)

### MISCELLANEOUS

#### GREAT OFFER FROM T-MOBILE

Unlimited data! Two lines for only \$100/month (w/auto-pay.) No cost HD video feature. No cost upgrade for hi-speed mobile hotspot. Call 844/236-0126

### STOP OVERPAYING

#### FOR YOUR PRESCRIPTIONS!

Save! Call our licensed Canadian & International pharmacy, compare prices and get \$25.00 off your first prescription! Call 877/210-2257 Promo Code: CDC201725

### MISCELLANEOUS

#### GOT KNEE PAIN?

Back Pain? Shoulder Pain? Get a pain-relieving brace - little or no cost to you. Medicare patients call health hotline now! 800/755-6807

#### DONATE YOUR CAR

truck or boat to Heritage For The Blind. Free 3-day vacation, tax deductible, free towing, all paperwork taken care of 800/439-1735

#### DISH TV - BEST DEAL EVER!

Only \$39.99/mo. Plus \$14.99/mo Internet (where avail). Free Streaming. Free Install (up to 6 rooms). Free HD-DVR. Call 800/297-8706

### Classified Advertising that is

## Easy!

THE MINNESOTA CLASSIFIED Ad NETWORK  
Make an impact with your advertising dollar with classified advertising that reaches over 3 million readers!



Your newspaper representative can provide complete details.  
The 2x4 Network is a program of the MNA, phone 800-279-2979

## HELP WANTED

Buffalo Ridge Concrete, Inc., is seeking qualified **CONCRETE TRUCK DRIVERS** at our Pipestone, Adrian, Luverne, Tyler, Edgerton and Slayton plants.

We offer competitive wages, health insurance, 401K, vacation & holiday pay and flex compensation. Pre-employment drug test required.



For an application visit our website [www.buffaloridgeconcrete.com](http://www.buffaloridgeconcrete.com) or stop by one of our locations.



For a complete job description

call AJ at

**605-360-1808**  
[www.buffaloridgeconcrete.com](http://www.buffaloridgeconcrete.com)



**SIoux VALLEY ENERGY**  
A Touchstone Energy Cooperative

### TEMPORARY APPRENTICE LINE WORKERS

Sioux Valley Energy is accepting applications for four (4) full-time temporary 1000 hour line worker interns to work with the line crews to construct and maintain electric utility lines. Hourly rate. Graduation from vocational/technical school in power line studies required. Must have a commercial driver's license. Work available at our Brandon and Colman service centers.

### TEMPORARY WAREHOUSE HELPER

Sioux Valley Energy is accepting applications for a summer temporary warehouse helper at our Colman service center. Responsibilities include filling work orders, stocking shelves, delivering material and assisting with the upkeep of the grounds. This position is full-time during the summer months. Hourly rate. Must be at least 18 years old and have a valid driver's license.

Candidates must submit an SVE application to be considered. They are available online at

[www.siouxvalleyenergy.com](http://www.siouxvalleyenergy.com)  
or by calling 1-800-234-1960.

#### Equal Opportunity Employer

All qualified applicants will receive consideration for employment without regard to race, color, religion, sex, sexual orientation, gender identity, age, national origin, disability or veteran status.