



Rock County STAR HERALD

Rock County's oldest business, printing since 1873

Thursday, January 4, 2018

It's c-c-cold outside

Weeklong sub-zero temperatures take a toll

By Lori Sorenson

Rock County, along with the rest of the Upper Midwest, has been in the grips of a sub-zero cold snap that has lingered for nearly two weeks.

While Minnesotans are accustomed to frigid temperatures, the severe cold — reaching minus 25 degrees and colder — for the length of time (more than a week) has been hard on even the hardiest of residents.

In addition to keeping themselves warm, local livestock producers have spent extra time keeping their animals alive.

According to Dr. Erin deKoning of Rock Veterinary Clinic, thawed water has been the biggest challenge.

"The cold makes everything take so much more time and effort," she said.

"For producers, it is constantly checking water tanks to make sure heaters are working, providing more bedding for comfort, and more feed for energy for the animals to stay warm."

She said the clinic canceled most of its cattle working jobs because of the extreme frigid temperatures.

"It takes a lot of extra effort to keep our syringes and equipment warm," deKoning said.

She also reminded people with pets to be diligent about protecting them from the elements.

"Bring them inside or provide them with a well-insulated dog house," deKoning said.

"It's critical that outside-only pets have access to water too."

According to the Minnesota State Patrol, travelers need to take extra precautions when venturing out in dangerously cold temperatures.

Extreme cold/see page 3A



Lori Sorenson photo/0104 extreme cold

Frost builds up on the foyer window at the Star Herald office Tuesday morning when workers on Main Street resumed business after the New Year's Day holiday. Temperatures dipped to around minus 20 degrees and colder at some points, creating dangerous conditions for anyone venturing outdoors.

Building activity in next three years to top \$160 million

Tru Shrimp, Walnut Street and substation top projects in 2018; armory, school will make 2019 a big year

By Lori Sorenson

If it seems like there's a lot going on in Luverne, it's because there is.

At a Luverne Economic Development Authority meeting Mayor Pat Baustian recently remarked, "We're at the precipice of a lot of new construction."

In the next three years, Luverne will see nearly \$160 million in new construction, and that doesn't include commercial and residential projects underway and yet to be announced.

This year will see the biggest construction surge with the \$100 million Tru Shrimp Luverne Bay Harbor and Luverne Hatchery along I-90.

Other big projects in 2018 are the \$4 million electrical substation in the Industrial Park and the \$800,000 Walnut Street expansion (and underground infrastructure) on the west edge of town from Main Street to Dodge Street.

"Infrastructure alone — roads, electric, sewer and water — will come to \$11 million in the next three years," Baustian said.

In 2019 the \$15 million Minnesota National Guard Armory will go up next to Tru Shrimp.

Also that year the "Town Square" mixed-use development of retail and housing will open on the former Sharkee's and Mert's Repair lots along South Highway 75.

Additional residential housing proposed for the east end of that block along Hatting Street (between Highway 75 and Freeman Avenue) would represent an estimated \$4 to \$8 million worth of new construction.

Another development starting in 2018 is the \$31 million voter-approved school project that is projected for completion in 2019. That amount includes \$24 million for expansion and improvements and a \$7 million fine arts auditorium.

By comparison, Luverne's average building activity over the past five

Luverne growth/see page 5A

Rock County's gravel tax brings in \$100,000 in 2017

By Mavis Fodness

Collection of aggregate taxes in Rock County topped \$100,000 in 2017 as the result of increased fees.

Seven gravel pit operators paid \$108,455 in a state-mandated tax rate of 15 cents per ton for removing material in Rock County.

From 2003 to 2016, Rock County had an exemption to charge half the

state amount or 7 cents per ton. The exemption was granted because no neighboring counties opted for the aggregate tax.

Last year, \$66,159 was collected in aggregate tax. The previous high (\$73,218) was collected in 2015.

When Pipestone County voted to adopt the 15-cent state aggregate tax in 2017, Rock County commissioners

voted to adopt the same state rate to avoid confusion.

The collected taxes are allocated to the county's road and bridge fund (\$43,788 for 2017), special reserve fund (\$15,454), townships (\$43,788) and administration fees (\$5,422).

Six townships received allocations based on where the aggregate originated.

Mound Township received the highest amount (\$15,814) followed by Denver (\$7,287), Battle Plain (\$6,711), Vienna (\$5,864), Luverne (\$4,265), and Clinton (\$3,845).

Townships of Beaver Creek, Kanaranzi, Magnolia, Martin, Rose Dell and Springwater each receive \$500 from the administrative fund to offset the gravel tax expenditure.

Eye clinic to celebrate opening in new location

By Mavis Fodness

When the Rock County Eye Clinic celebrates the opening in its new location on North Freeman Avenue in Luverne Friday, attendees won't recognize the former clinic or the building.

On Friday, Jan. 5, the official ribbon-cutting ceremony takes place at 11:30 a.m. followed by an open house until 3 p.m.

The event celebrates months of planning and construction for Optometrist Dr. Sandra Carman and her staff.

In February 2016, dentist Dr. David Paquette announced his retirement and offered his next-door office space to the eye clinic for sale.

The former dental space was totally remodeled to accommodate the eye clinic.

"The only thing that's original is the roof and the cinder block walls,"

Rock County Eye Clinic/see 3A



Mavis Fodness photo/0104 Eye Clinic

Rock County Eye Clinic will celebrate its new clinic space Friday with a ribbon-cutting ceremony and open house. Staff include (from left) technician Emily Cowell, office manager Hailey Nath, Dr. Sandra Carman, receptionist Brenda Tecken and optician Crystal Ailts.

Commissioners increase 2018 levy by 2.99 percent

By Mavis Fodness

Rock County Commissioners followed up on their earlier discussion to lower the 2018 preliminary levy percentage by unanimously voting for a levy increase of 2.99 percent or \$163,683 at their last meeting of 2017 on Dec. 27.

Commissioners preliminarily set increasing the 2018 levy by 4.75 percent in September.

During a budget retreat in early December, commissioners took a line-by-line approach to department expenditures and decided to lower the levy increase by \$96,324.

For 2018, the county will collect \$5.633 million in local property taxes as part of its projected \$13 million budget.

The reduction in the levy increase was due to commissioners placing less money in reserves

(\$196,000 versus \$280,000) and the notification that the county will receive additional state funds (\$167,650 versus \$520,654) for 2018.

Anticipated capital expenditures (\$135,000) that included repair of the courthouse elevator (estimated at \$61,000) and the installation of computer-aided dispatch equipment into the sheriff's department vehicles prevented commissioners from lowering the preliminary levy even further.

In other business, the board approved a three-year contract of percent increases of 2.5, 3 and 3 with County Administrator Kyle Oldre.

His salary for 2018 is \$108,169. The same salary percentage increases were approved for County Highway Engineer Mark Sehr.

His salary is \$112,004 for 2018.



COMMUNITY CALENDAR

Meetings

American Legion Auxiliary #123 will meet at 10 a.m. Wednesday, Jan. 3, at the home of Dianna Tomlinson. Call 283-1934 with questions.

Rock County Senior Citizens will conduct its annual meeting 1 p.m. Monday, Jan. 8, at the Senior Center in Luverne.

Stateline Cemetery Association will have its annual meeting at 12:30 p.m. Monday, Jan. 8, at the Pizza Ranch in Rock Rapids, Iowa. Call Mike Boyenga at 507-967-2530 with questions.

Matthew 6 Board of Directors will meet at 7 p.m. Monday, Jan. 8, at the Pizza Ranch, Luverne.

Beaver Creek Township Board will meet at 7 p.m. Monday, Jan. 8, at the township hall.

Rock County VFW #2757 will meet at 7 p.m. Tuesday, Jan. 9, at the Rock County Military Museum. Call 507-449-0632 with questions.

Southwest Regional Development Commission Full Commission will meet at 3:30 p.m. Thursday, Jan. 11, at the Murray County Fairgrounds in the 4-H building at 3048 Broadway Avenue in Slayton.

Lady Luverne Red Hats will meet at 11:30 a.m. Friday, Jan. 12, at Luverne Senior Dining. Event is lunch at Senior Dining, Red Hat rummage sale and games. To make reservations call Connie Wieneke at 283-8470 by Wednesday, Jan. 10.

Parkinson's Support Group will meet at 1 p.m. Thursday, Jan. 18, at St. John Lutheran Church in Luverne. Call 507-530-3307 with questions.

Bank Night movie 'Leap' Jan. 4

The free Bank Nite movie, "Leap," rated PG, will begin at 6 p.m. Thursday, Jan. 4, at the Palace Theatre in Luverne.

Sponsored by First Farmers & Merchants National Bank and Papik Motors, a free, family-friendly movie is shown on the first Thursday of every month as it was done for "Bank Nite" in the 1930s. A cash prize drawing will follow the movie. Must be present to win.

Try out for Green Earth play Jan. 7-8

Auditions are set for the next Green Earth Players production, "KOLD Radio — Whitefish Bay," a comedy by Phil Olson. Try-outs for the cast of five men, four women, and one teenage girl are set for 2-4 p.m. Sunday, Jan. 7, and 5-7 p.m. Monday, Jan. 8, at the GEP building at 401 Edgehill Street in Luverne. Performances are set for March 16-18 and 22-25.

'Sister Act' bus trip to Chanhassen

Luverne Community Education is offering a bus trip to Chanhassen Dinner Theater on Saturday, Feb. 10, to see "Sister Act."

Call Community Ed at 507-283-4724 by Jan. 10 to reserve a spot. Cost is \$110 for the busride and event.

Park hosts candlelight hike Jan. 13

The Blue Mounds State Park staff invites the public to participate in a candlelight hike from 6-7 p.m. Saturday, Jan. 13. The hike is a self-guided, self-paced 2-mile trail. Meet at the warming shelter for warm beverages and a fire. Weather conditions are variable, so bring warm winter clothes and sturdy boots.

Free dinner theater planned for Jan. 15

LPEP or Leaders Partnering to End Poverty is hosting "Poverty: What's Your Baggage?" from 6 to 8 p.m. Monday, Jan. 15, at Grand Prairie Events in Luverne.

The free performance is a collaboration between the #LuvLuvAll and the Green Earth Players. It is supported in part by the Blandin Foundation.

"Poverty: What's Your Baggage?" explores how the issue of poverty impacts residents and how a community can remove assumptions to help move people out of poverty. Register by contacting ATLAS at 507-449-5777. Child care and transportation assistance are available.

Workshop on social media dangers

Nationally known author Alison Feigh of the Jacob Wetterling Resource Center will present "Forensic Aspects of Online and Social Media Usage" at Grand Prairie Events from 9 a.m. to 4 p.m. Thursday, Jan. 25.

Goal of the training session is to help participants understand why youth are susceptible to online and social media dangers and how to reduce their risk. Cost of the workshop is \$50 and includes lunch. Continuing education credits are available. The event is partially funded with a grant from the Luverne Area Community Foundation.

'Truly I tell you, whatever you did for one of the least of these brothers and sisters of mine, you did for me.' — Matthew 25:40

At 90, Luverne woman says she is 'blessed' to be able to give back

By Lori Sorenson

Julie Schuur just turned 90, but she figures she has at least another decade to get things done.

"My mom lived to be 105 ½ and I hope I can do that too," she said. "All I can do is the best that I can do today."

If there will be a legacy to call her own, this will be it.

Schuur has been a walking example of living life to its fullest and doing the best she could with what she had.

"I've really been blessed," Schuur said last week in the sunny kitchen of her Cashin Drive townhome.

School was a privilege

A child of the Great Depression, Julie Sankey grew up on a farm east of Edgerton.

She remembers having only two dresses for school; one that she wore Monday, Tuesday and Wednesday, and the other on Thursday and Friday.

Growing up with her eight siblings and attending elementary grades in a rural schoolhouse, she said she didn't feel poor.

"We were all poor," she said.

"We didn't know. ... It wasn't until high school that we realized we didn't have as many things as some other students."

Going to high school at all was a privilege at the time, she said, considering many young people opted to work, often on the family farm.

"I was one of the few girls in my church who went on to high school," Schuur said. "Others stayed home or worked as hired girls."

"I couldn't thank my parents enough for seeing to it that I went on to school."

In the Sankey family, children were allowed — encouraged — to attend high school only if they promised they would do something professional with their education.

Her siblings became businessmen, a nurse and a lab technician.

She became a teacher. She was born for the job.

"I loved school," she said. "I loved to read and I loved learning."

She graduated from Edgerton High School in 1945 and attended St. Cloud State Teachers College.

"There were 420 women and only nine men," she said.

Most young men at that time were serving in World War II, which ended while Schuur was in college.

"There was lots of celebrating," she recalled.

"Church bells were ringing and people were honking



Lori Sorenson photo/1228 julie schuur

Many of Julie Schuur's travels were mission trips, and her favorite mission today is Talking Bibles International, which records the Bible in 3,000 different languages. "When I saw the reaction of these people the first time they heard God's word in their own language ..." she shook her head.

"God has blessed me so much that it's required of me to give to other people again. ... It's a way of honoring God. ... It's something I want to do."

— Julie Schuur, Luverne

their horns. ... It was just a wild time, because the war with Japan was over."

Schuur got her degree and went on to teach 43 years, 21 of them in Luverne.

"I loved teaching," she said.

"There wasn't a day that I didn't want to go to work."

She smiles to think of the two and even three generations of local families who have learned in her classroom.

"The opportunity I had to teach all these children ... It was always so thrilling to learn new things, and I tried to pass that on to my students," she said.

"It was the most wonderful career in the world."

World travels

She retired in 1991, but considering the trails she's blazed since then, her days in the classroom are a lifetime ago.

"I've been to six of the seven continents (I'm not going to Antarctica) and nearly 40 different countries," she said.

Many of her travels were mission trips, and her favorite mission today is Talking Bibles International, which audio records the Bible in 3,000 different languages.

"When I saw the reaction of these people the first time they heard God's word in their own language ..." she shook her head.

Her last mission trip was in 2005 to India.

"We need to be thankful for every day God gives you, because it's a wonderful gift to be 90."

"The money I used to spend on trips I'm going to spend on Talking Bibles so people who can't read can find out about Jesus."

Giving back

Her husband, John Schuur, died in 1996, and it was a reminder that tomorrows aren't guaranteed.

"We need to be thankful for every day God gives you," she said last week. "Because it's a wonderful gift to be 90."

Schuur's efforts to make the world a better place weren't overlooked at home.

Among the long list of nonprofit organizations she's helped is the American Association of Retired Persons (AARP). She still volunteers to do taxes at the library for low-income citizens and the elderly.

She's spent time helping the Luverne Lions and local quilting groups (she's had a role in nearly 3,000 quilts over the years that have been donated to the Alpha Center, Children's Inn, Union Gospel Mission and other nearby charities).

But most of Schuur's volunteer time has been with the National Ataxia Foundation, a group founded in 1957 by her relatives.

Ataxia is a hereditary neurological disease, and Schuur's grandmother and uncle died of it.

"It started with fewer than 10 members in 1957 and a \$3,000 budget," Schuur said.

Now the National Ataxia Foundation's research funding has reached over \$1 million per year.

That, she said, is due to education and awareness efforts of the Ataxia Foundation, something Schuur worked hard at — serving on the national board for 62 years.

Aging is a gift

Schuur doesn't think twice about the time she donates to charity.

"God has blessed me so much that it's required of me to give to other people again. ... It's a way of honoring God."

Fortunately, Schuur said her volunteer efforts are enjoyable — not obligatory. "It's something I want to do," she said.

"Enjoy every day God gives you, because it's a wonderful privilege to be 90."

She said birthdays are a chance to reflect on the years.

"I really have had a wonderful life," she said.

"To think that a farm girl growing up in Edgerton on Poverty Hill could do all these things. ..."



Dial-A-Specialist

Your One Stop Guide to Local Businesses

 <p>ROCK COUNTY CHIROPRACTIC • Men, Women & Children's Health • Custom Orthotics • Kinesiotape • Athletic Care • Massage Therapy • Work & Auto Injuries • Postural Restoration WWW.ROCKCOUNTYCHIROPRACTIC.COM 283-2561 • 103 E. MAIN, LUVERNE Monday 7:30 a.m. - 6 p.m. • Tuesday 7:30 a.m. - 3 p.m. Wednesday 7:30 a.m. - 6 p.m. • Thursday 7:30 a.m. - 1 p.m. Friday 7:30 a.m. - 5 p.m.</p> <p>• Chiropractic</p>	 <p>STAR HERALD Luverne ANNOUNCER</p> <p>Chantel Connell Sales Representative</p> <p>117 W. Main, Luverne, MN 507-283-2333</p>  <p>Rick Peterson General Manager</p> <p>• Advertising</p>	<p>LUVERNE HEALTH & WELLNESS <i>Codie Zeutenhorst, D.C., CAC</i></p> <p>✓ Acupuncture ✓ Chiropractic Care ✓ Family Care ✓ Sports Injuries ✓ Kinesiotape ✓ Auto & Work Injuries</p> <p>Acupuncture and Massage Available Kris Van Der Brink M.T. & Amy Rosales M.T.</p> <p>507.449.4400 www.luvernechiro.com 109 S. Freeman Ave. Luverne, MN</p> <p>• Chiropractic</p>	<p>COMRAY COMPUTERS Computer Repair and System Builder</p> <p>Ray Hansen 1726 140th Ave., Luverne, MN 56156 507-669-2621 comraycom@gmail.com</p> <p>• Computer</p>
 <p>Rock County EYE CLINIC 507-283-2345 104 N. Freeman Ave. Luverne, Minnesota</p> <p>• Eye</p>	 <p>Papik MOTORS 1-90 Luverne, MN Box 536 • 801 West Commerce Road Luverne, MN 56156</p> <p>(507) 283-9171 (800) 634-7701 www.papik.com</p> <p>• Automotive</p>	<p>Luverne MINNESOTA City Offices <i>Love the life!</i></p> <p>PO Box 659, Luverne, MN 56156 507-449-2388 (24 hour voice mail) www.cityofluverne.org</p> <p>• City</p>	<p>Dakota Land Surveying and Engineering, Inc.</p>  <p>Steven B. Kor Professional Engineer Registered Land Surveyor</p> <p>2000 W. 42nd Street, Suite B-6 Sioux Falls, SD 57105 605-334-4882 605-334-5745 Fax</p> <p>506 Almar Luverne, MN 56156 507-283-3803 steve.dis@midconetwork.com</p> <p>• Land Surveying</p>

Debt service raises Luverne School levy 51.27 percent

Increased student enrollment boosts revenues for 2017-18

By Mavis Fodness

Repayment of the \$31 million in planned Luverne school improvements begins next year as suggested by the state education department.

During the Luverne School Board's annual Truth in Taxation hearing Thursday evening, Dec. 21, business manager Marlene Mann suggested lowering the levy by \$180,000 due to duplication in building maintenance costs.

"We said we would levy the maximum but if we could lower it we would," she said.

In 2018 property owners in the district will pay \$3.756 million to the school district, an increase of 51.27 percent over the 2017 levy of \$2.482 million.

Earlier this year, board members completed a long-range facility improvement plan.

As part of that plan to maintain facilities, board members used their authority to levy \$8 million over the next 12 years.

In November, as part of the long-range plan for remodeling the middle-high school and adding a performing arts center, voters approved the bonding of \$24 million over the next 20 years.

Board members voted 6-0 (clerk Shelley Sandbulte was absent) to increase the levy by 51.27 percent.

No one from the public attended the school's taxation hearing.

The Minnesota Department of Education determines the maximum percentage school districts may levy on an annual basis. Individual school boards may lower but not increase the state's recommendation.

In determining levy limitations for a district, the state divides funding into three funds: general, community service, and general operating debt.

Mann said the primary revenue sources for these funds are state aid and local tax levies.

The general fund includes expenditures for transportation, capital outlay and education.

For 2018, Luverne's local levy increase includes an additional \$91,624 (6.18 increase) for the general fund.

Community service decreases for 2018 by 3.24 percent or \$3,317 in less funding. General debt service for 2018 increases an additional \$1.184 million.

The debt service fund for 2018 only includes upcoming facility improvement projects. The final payment (\$890,000) of the previous 20-year bond to build the elementary school will be made in February.

State aid comprised the majority of the district's \$16 million projected budget for the 2017-18 school year.

State aid for the general fund is based on student enrollment while the district's adult and children younger than age 5 population aids the community service fund.

"The revenue was higher than what we budgeted because we had that increase in student enrollment," Mann said. "We had about 40 students more."

For the past three years, up until 2016, the student enrollment in Luverne was around 1,198 students, fluctuating by one or two students each year.

As of November, however, student enrollment is 1,240 or an increase of 42 students for the current school year.

The census for children younger than 5 was 424 children as of Dec. 1, up from 419 in 2016 but down from 433 in 2015.

The state disburses funds to school districts based on a per pupil formula established in 2015.

For the current school year state aid is \$6,188 per pupil, up \$121 from the previous school year.

The state, however, instituted a 10-percent holdback of state aid monies to districts three years ago. For Luverne, the state withheld \$1.2 million in 2017, an amount reflected in the district's fund balance.

In other business board members:

- set the driver's education program fee at \$325. The amount is unchanged from the previous year.

- approved medical leave for paraprofessional Cindy Reu beginning Dec. 27 and hired Denise Schlosser as a long-term paraprofessional substitute.

Rock County Eye Clinic ribbon-cutting/continued from page 1A



said Tom Wiertzema, Carman's spouse and clinic bookkeeper.

The new location doubles the eye clinic's square footage to just under 2,000 square feet. The previous clinic location is currently empty with no specific plans for its use, Wiertzema said.

The eye clinic now has separate areas for patient screenings, frame purchase and fitting, and increased from two to three optical examination lanes for better patient flow.

"We also have a wheelchair guide," said office manager Hailey Nath.

The guide allows the exam chair to be moved and accommodate a patient's wheelchair under the exam equipment.

Along with regular eye examinations, the clinic is still able to diagnose glaucoma, macular degeneration, cataracts, and diabetic eye complications. The staff also provides treatment of pink eye, dry eye problems and urgent care.

"All facets improved with the expansion," Wiertzema said.

The eye clinic continues its relationship with Ophthalmology Ltd. out of Sioux Falls and Dr. David West.

Future services are being considered, Wiertzema said.

The Rock County Eye Clinic was also able to include remodeling the building's exterior to the project through the Luverne Historic Façade Improvement Program.

Pictured above, optician Crystal Ailts has an expanded area to help patients with frame selection and fitting for glasses.

Pictured at left, a separate screening area is now available at Rock County Eye Clinic.

Mavis Fodness photos/ 0104 Eye Clinic

With the location in a larger facility, the Rock County Eye Clinic was able to add an additional examination lane to improve patient services. The clinic now has three exam lanes. At right is the new exterior facade along Freeman Avenue.

Extreme cold creates hazards/continued from page 1A

Frostbite can happen in 10 minutes or less with wind chills that have been reported at 30 to 50 degrees below zero.

Extreme cold has been blamed for at least four deaths in the Upper Midwest.

Every winter motorist needs a coat or blanket, boots, a flashlight with extra batteries and an ice scraper.

A shovel is useful to clear snow away from a vehicle and especially the tailpipe to keep fumes out should the car need

to run to keep warm. Jumper cables are also advised.

The cold can leave car batteries dead and can even stall moving vehicles when sub-zero temperatures interfere with the mixture of air and fuel.

According to Phil Gorter of G&S Auto, Luverne, jump starts and tows have kept him busy through the New Year's holiday weekend.

"If I said 50, it would be conservative," he said about his service calls from Friday

night through Tuesday.

"I'm sitting on three jump starts and three tows, and I've been in the tow truck since 7 this morning," he said at noon Tuesday.

Motorists are urged to stay with their vehicles and wait for help to arrive, especially if they're stalled in a rural area miles from assistance.

"If stranded, stay in the vehicle and call 911," said Troy Christianson, Minnesota State Patrol information

officer.

"Make sure your vehicle is properly maintained and that you have at least a half tank of fuel."

Gorter said poor fuel pumps or engines running too low on fuel were to blame for most of his service calls.

"Or, it could have been an issue that had started a while back, and when the cold hit it just got ugly," he said.

"And that's what it is now — ugly."

Rock County EYE CLINIC
507-283-2345
104 N. Freeman Ave.
Luverne, Minnesota
www.rockcountyeyeclinic.com

50% off frame with purchase of lenses
Jan. 2 - Jan. 31, 2018

LIKE US ON facebook

Ring in the New Year and join us for our **Grand Opening**

JANUARY 5
Ribbon Cutting 11:30 a.m.
Open House 11:30 - 3:00

Rock County Eye Clinic, locally owned, community involved, clearly different.

WINTER SENIOR ATHLETES OF THE WEEK

Emilie Bartels
Sport: Hockey
Position: Goalie
Parents: Randy & JoAnn Bartels
Favorite Subject: Foods
Extra Curricular Activities: Tennis, hockey, band, peer helping and working at the pool
Future Plans: Major in marketing at the U of M and hike a mountain sometime

Jim Erickson
Sport: Hockey
Position: Defense
Parents: Paco & Diana Erickson
Favorite Subject: Online Personal Fitness
Extra Curricular Activities: BPA, lifting weights, tennis, hunting
Future Plans: Attend UND for business management

Trey Roberts
Sport: Hockey
Position: Defense
Parents: Shane & Heather Roberts
Favorite Subject: History
Extra Curricular Activities: Hunting, fishing, baseball
Future Plans: Attend MSU Mankato for environmental conservation

Look who's **50!** January 5
from Kevin, Jenni, Austin & Tyler

Cards can be sent to Julie Fick
1659 71st St, Luverne, MN 56156

Hale Honeybells
The once a year citrus sensation!

ONLY \$27.99*
Special limited time offer!

Buy 12 get 12 more pieces **FREE!**

Call 1-844-296-0498 to Order Item 2693X or Visit HaleGroves.com/J19132
Only \$27.99 plus \$5.99 shipping & processing.
Satisfaction completely guaranteed. ©: BSW-1932

Wishing you a Blessed and Joyous New Year!

Thank you for your patronage the past year.

Looking forward to serving you in **2018!**

S&S Car Wash
S. Kniss Ave.
Al, Barb and Dave Spartz

pepsi

Pipestone Pepsi | 1809 Forman Drive, Pipestone, MN 56164

Disease robs time with friend ... but friendship is timeless

When researching through back issues of the Star Herald, headlines and stories unrelated to my search often side-line my original mission.



RUMINATIONS

By Mavis Fodness, Reporter

Emily would often burst into song ...

I find myself reading articles and reminiscing about local events or people we've interviewed.

I paused recently on a page that featured a portrait of Emily Lodine. She was sitting on the front steps of her rural Magnolia home.

She looked vibrant, happy.

She was content living on a crop and hog farm despite her opera career with elite performance venues around the globe.

I knew little of Emily back in 2000 when the article was written. Since I am not an opera enthusiast, performances of *Madame Butterfly* or *The Marriage of Figaro* were not of much interest to me.

My first exposure to Emily's energy was in the newspaper office. Her demeanor was vibrant, commanding.

She became my friend last year by way of her Alzheimer's disease. I say that because she more than likely wouldn't have had time for coloring at the local coffee shop if it weren't for her diagnosis.

Our first meeting had her talking in abbreviated sentences but I could still understand her thoughts. She would laugh, picking up a colored pencil to finish a small portion of her picture.

Just weeks later we in the coloring group were concerned when she would drive up to the coffee shop and not get out of the car. She had forgotten how to place the vehicle in park.

Feeling she was no longer

safe behind the wheel, we would arrange to pick her up for the Saturday morning gatherings.

One such morning we decided to go shopping. She was chatty, smiling, but we often couldn't understand what she was saying.

Emily would often burst into song, that silvery voice effortlessly fluttering up and down notes over several octaves.

The singing involved no words, though. Her mind had forgotten the various practices and public performances where the lyrics came easily.

She now lives in a memory care facility in Brandon, South Dakota, and it's hard not to think about how much the cruel disease has taken away from her.

For that I am sad.

I look at the Star Herald article from March 16, 2000, and wish diseases that rob people of their memories and cognitive abilities didn't exist.

Emily's memory can no longer relive the experiences we shared together during our short friendship, but I can still remember.

So I sent her a card with a picture of the two of us.

While someone else will have to read what the card says and explain the picture of who I am, I somehow hope it stirs something in her heart, if not her brain. ... That the Emily we once knew is not forgotten, especially not by me.

Minnesota ranks No. 1

Study lists several reasons on state's steady climb to top

STAR HERALD EDITORIAL

Minnesota is the best-run state in the nation, according to a new study from USA Today that cites Minnesota's strong fiscal management, low unemployment and poverty rates, above-average median household income, and the state's nearly perfect credit rating.

We often brag about how proud we are to be Luverne leaders and residents. Here are some reasons to be proud of our state

Since ranking 10 in 2012, Minnesota has consistently climbed in the rankings under the same study, including ranking second last year.

"This Administration has worked hard to make state government work better for the people of Minnesota — and we are not done yet," said Governor Mark Dayton.

The study notes that Minnesota's strong economy and sound fiscal management have allowed the state to save more — approximately ten percent of our annual budget — which is more than most other individual states, and above the average of all states' savings, which is eight percent.

The study also cites Minnesota's near-perfect credit rating from Moody's, and a currently stable long-term outlook, and it also cites Minnesota's low unemployment and poverty rates.

Minnesota's unemployment rate has been at or below 4 percent for 40 straight months, and recently hit 3.3 percent, the lowest it has been since 2000.

Minnesota employers have added more than 290,000 jobs since 2011, and the state has made investments in education every year to grow greater opportunity for all

Minnesota families.

Wages also are growing in Minnesota, alongside an increase in the minimum wage to keep up with the rising cost of living.

Below are some examples of how state government has become more efficient, effective and accountable for Minnesotans.

- Making government work better for people — Minnesota has undertaken more than 500 reform projects to streamline processes and save taxpayer money. This includes efforts to better care for veterans, an initiative to reduce document storage costs by 20 percent, and a program at the Pollution Control Agency to reduce contract processing time from 7 months to 3.5 months.

- Strengthened fraud prevention efforts — The Department of Human Services created a new Office of Inspector General to increase accountability. Thanks to the new office, the State of Minnesota has recovered \$97 million in improper payments to health care and child care providers who have attempted to defraud Minnesota taxpayers.

- Saved taxpayers \$1.5 billion through competitive bidding — The State of Minnesota was not getting the best value for public enrollees in managed care plans, so the Department of Human Services now requires health plans to bid and compete, to provide health care

coverage state programs at the best value for taxpayers. This has saved taxpayers \$1.5 billion.

- Child care licensing at the speed of business — Many Minnesota communities, especially in rural areas, face a shortage of quality child care providers. As part of Governor Dayton's reform efforts, child care center applications were changed to be easier to understand and process. These reforms ensured that 75 percent of all applications are reviewed within 120 days, up from just 31 percent before.

- Saved Minnesota taxpayers \$60 million through IT consolidation and reform — The state of Minnesota has reformed and modernized its use of technology to improve experiences for consumers and save money. Thanks to reforms, the state's data center footprint was reduced by more than 50 percent, making Minnesota more secure, while saving taxpayer money.

In addition, IT reforms have reduced technology purchasing costs. Since 2011, these reforms have saved taxpayers more than \$60 million.

"Next session I will urge the Legislature to work with me to protect the long-term fiscal stability of our state, which is essential for Minnesota's future," Dayton said.

"Working together, I know we can deliver even better services, and better value, for the people of Minnesota."

This is your page!

Your opinion matters.

This is your place to express your opinion on matters of community importance. A strong opinion page in a community newspaper is a sign of a strong and cohesive community. The Star Herald Letters to the Editor policy appears each week in the space below, outlining letter length, content, deadlines and contact information.

Ohme: Salvation Army Kettle Campaign 'surprisingly successful'

To the Editor:

The Salvation Army Kettle Campaign in Rock County had a surprisingly successful campaign this year at Teal's, Teal's Gas, and Shopko.

A total of \$7,800 was collected, the second highest in Rock County's history.

I want to thank all the citizens of Rock County for making this possible. Also thanks to Teal's and Shopko for allowing the placement of our kettles and a warm place for our volunteer ringers to work.

This money will stay in Rock County and go to emergency funds and valuable programs within Rock County that would not otherwise be funded.

We had a good group of volunteers, many from RCO, St. Catherine's Church, all of them much appreciated for their dedication to the Salvation Army.

Suanne Ohme
Rock County Salvation Army
Kettle Coordinator

Luverne enjoys 150 years of progress; more to come

I can't say thank you enough to the folks who donated to the 150-\$150-150th for you generous donations. Donations are still coming in, and as I write this we are just a little short of our goal of 150 donors. I would love to add your name to the list of donors that has been running in the Star Herald the last few weeks, and next week will be your last chance to have your name added to the list.

You can send you check to Luverne Area Community Foundation, PO Box 623, Luverne, MN 56156 or visit the Foundation website at www.luvacf.org to make a credit card donation.

As we kick off the new year, I can't help but think back over the past year and think to myself how progressive Luverne is. A yearlong celebration of the city of Luverne's first 150 years has come to a close, and yet as you look around, it's like we're just getting started.

My guess is Luverne will change more in the next 25 years than it did in the first 150.

Just a little over a week ago I got a call from a mover and shaker from Pipestone. He wanted to know how the heck (my word not his) does



FOR WHAT IT'S WORTH

By Rick Peterson, General Manager
Tollefson Publishing

Luverne do it.

Do what, I asked?

He said he gets asked by other Pipestone folks why can't they do the things Luverne always seems to be doing.

My short answer was you can — you just haven't.

Going back a handful of years, when the current movement to send Luverne down its path to self-improvement started, there were meetings. There were Town Hall meetings, there were public meetings, private meetings, there were morning meetings and night meetings. Some meetings even got a little heated and there were more than a couple of meetings that were even a waste of time. But after all the meetings and

ideas were gathered — and keep in mind, those ideas included good ones and bad ones — all the meetings and ideas would have been a waste of time except for one thing.

That one thing was put up on a big screen in front of the crowd at the first meeting at the former Blue Mound Banquet Center.

The words, "IF NOT NOW, WHEN?"

That night the people of Luverne chose NOW.

The transformation has taken off and the course of that transformation has been and no doubt will continue to be tweaked along the way.

If you don't think transformation is all that noticeable, just ask the folks 25 miles to the north.

E-mail: editor@star-herald.com Web site: star-herald.com
Phone: 507-283-2333 Fax: 507-283-2335

Published Thursdays by Tollefson Enterprises, POSTMASTER: Send address changes to 117 West Main, P.O. Box 837, Luverne, MN 56156. Periodicals postage paid at Luverne, Permit #33 and at additional mailing offices.

General manager: Rick Peterson
Office manager: Deb Lusty
Circulation manager: Jennifer Kor
Advertising: Chantel Connell
Production manager: Abbe Kolar
Production: Heather Johnson

News staff:
Lori Sorenson, editor
Mavis Fodness, reporter
John Rittenhouse, sports editor
Esther Frakes, copy editor

Rock County
STAR HERALD
Rock County's newspaper since 1873

(ISSN 0889-888X)
SUBSCRIPTION RATES

\$72 per year in Rock County; \$89 per year all other areas. Single copies \$1.25

Entire contents copyrighted by
Tollefson Publishing Roger Tollefson, publisher

The *Star Herald* encourages letters to the editor expressing the opinions of readers and intends to print all letters. Letters not meeting the guidelines will not be printed. The *Star Herald* will verify the authenticity of all letters. Letters must have the name of the writer, a signature and address.

Unsigned letters will not be considered. The *Star Herald* will edit for grammar, spelling and clarity. Any letters containing offensive language, libelous or slanderous material, or misleading or false information will be rewritten before being published. The *Star Herald* will not publish letters written with the sole intent to advertise or serve as a thank-you. Letters with more than 300 words may be edited. The deadline for letters is Monday 10 a.m. They may be delivered or mailed to the editor, *Rock County Star Herald*, P.O. Box 837, 117 W. Main St., Luverne, Minn. 56156.

ON THE RECORD

Dispatch report

Dec. 21
 •Complainant reported her ex is banging on her door and won't go away.
 •Complainant conducted search warrant at property on County Highway 6, Hills.
 •Complainant reported garage fire at North Garfield.
 •Complainant reported suicidal male at Luverne Street.
 •Complainant called Law Enforcement Center and requested to speak with deputy regarding issue with girlfriend's family. Deputy spoke to complainant.
Dec. 22
 •Complainant on 191st Street reported outbuilding on fire.
 •Complainant reported abandoned car in parking lot at Grand Prairie Events.
 •Complainant got an email about a computer virus and lost \$4,000.
 •Complainant is missing \$500 from residence on Blue Mound.
Dec. 23
 •Deputy assisted in custody exchange.
Dec. 24
 •Complainant reported suspicious activity on Interstate Drive.
 •Complainant reported two kids walking on ice at the Veterans Home pond.
Dec. 25
 •Complainant reported his alternator went out. He has a small child with him. Deputy transported occupants. Gave to patrol, enroute from west of Worthington.
 •Complainant reported someone fell through the ice with his fish house. He was out and trying to dig it out.

Dec. 26
 •Complainant reported structure fire at location on 150th Avenue.
 •Complainant reported sudden drop in water pressure.
 •Subject at Law Enforcement Center to pay cash bail.
 •Complainant reported possible gas leak on N. Cedar Street.
Dec. 27
 •Complainant came out this morning and noticed damage to his vehicle on E. Lincoln St.
 •Complainant at Mead Court reported dryer fire.
 •Complainant reported alleged child maltreatment.
 •Nobles County arrested subject on Rock County warrant. Subject was lodged at the Nobles County jail.
 •Complainant reported a repossession.
 •Complainant called Law Enforcement Center and requested to speak with deputy regarding custody issues with subject.
 •Complainant called and requested to speak with deputy regarding issues with landlord. Deputy spoke to complainant.

In addition officers also responded to 2 vehicles in the ditch, 3 transports, 2 escorts, 22 ambulance runs, 2 animal complaints, 4 property damage/accidents, 6 road and drive laws, 5 paper services, 7 log sheets, 2 drug court tests, 2 permits to purchase/carry, 8 abandon 911 calls, 1 probation violation, 2 fingerprint requests, 2 personal accidents, 1 background check, 2 public assists, 21 traffic stops, 1 assist, 1 abandon vehicle, and 1 roadside assist.

Local fire departments busy at year's end

By Mavis Fodness

The last days of December were busy ones for firefighters in Rock County with responses completed in less than ideal weather conditions.

At 4:15 a.m. Friday, Dec. 22, Jake and Sue Bruynes woke to no electrical power as a fire in two nearby storage sheds spread toward their farmhouse on 191st Street.

"The garage was hot and smoking," Sue said. "It would not have been long." The Hardwick Fire Department responded and quickly extinguished the flames in the single digit above zero temperature.

"They were wonderful," she said. Cause of the blaze is unknown. Tuesday, Dec. 26, with the air temperature at minus 17, the Luverne Fire Department was called to the Quarry View Ranch east of Luverne to put out a fire in an equipment shed. The call came in around 7:40 a.m.

The flames were quickly extinguished before spreading. Cause of the blaze is unknown, according to Luverne Fire Chief Dave VanBatavia.

At 12:44 p.m. Wednesday afternoon, Dec. 27, Luverne Fire Department was called to a dryer fire at West Mead Court west of the Rock County fairgrounds.

VanBatavia said either lint or the electrical connection to the dryer started the blaze that took minimal water to extinguish.

Renter Bethani Gorter was displaced from her home until electrical inspectors approved the trailer for occupancy.

Temperatures were around 5 below zero at the time of the Wednesday afternoon call.

Luverne volunteer firefighters were called out around 3 p.m. Thursday, Dec. 28, for the third day in a row when a boiler fire was reported at the Dell-Hogan American Legion building on West Main Street in Luverne.

Extinguishers were used to quickly put out the flames.

VanBatavia said damage was limited to the boiler in the building's



Mavis Fodness photo/0104 Fires Dec 28 West Main Street was closed Thursday afternoon, Dec. 28, as Luverne firemen extinguish a fire in the boiler room at the Dell-Hogan American Legion.



Mavis Fodness photo/0104 Fires Dec 27 Luverne volunteer firefighters were called to West Mead Court in Luverne Wednesday afternoon, Dec. 27, to extinguish a fire located near a dryer inside the trailer.

basement due to its location inside a block-walled room. He speculated that the boiler malfunctioned and that is what caused the fire.

None of the four fires, however, resulted in injuries or deaths.

Fire deaths spike in state

According to the state fire marshal, 56 people have died in fires in Minnesota as of Dec. 20. That number represents a 30-percent increase over last year's total of 43.

Marshal Bruce West said the holiday season is historically a dangerous time for fires.

He suggests these tips to stay safe:

- Stay in the kitchen while cooking.
- Keep items like towels and aprons at least 3 feet from the stove.
- Set a timer if using the oven.
- Never leave a space heater unattended.
- Plug space heaters directly into outlets, not extension cords.
- Use flameless candles for holiday decorations.
- If using real candles, never leave them unattended.
- Smoke outside.
- Properly extinguish cigarettes in a solid container filled with sand.
- Test smoke alarms regularly. They save lives, but only if they work.

Greater protection offered through Noninsured Crop Disaster Assistance

By Fraser Norton
 County Executive Director

Greater protection is available through FSA's Non-insured Crop Disaster Assistance Program (NAP) for crops for which federal crop insurance is not available.

Options created by the 2014 Farm Bill provide greater coverage for losses when natural disasters affect eligible crops.

Previously NAP offered coverage at 55 percent of the average market price for crop losses that exceed 50 percent of expected production. Producers can now choose higher levels of coverage, up to 65 percent of their expected production at 100 percent of the average market price.

Another improvement is that reduced forage quality is now considered a production loss for weather disaster assistance coverage under the new NAP buy-up provisions.

This safety net is important for cattlemen who produce non-insurable forages to

feed livestock. Previously, FSA only considered a decrease in overall forage tonnage produced when determining if the producer suffered a compensable loss after a qualifying weather event.

Under FSA's new NAP buy-up provisions, a decrease in forage quality — such as protein content — is also considered.

To help producers determine whether their crops are eligible for NAP coverage, a Web tool is available at www.fsa.usda.gov/nap. It also gives them an opportunity to explore options and levels to determine the best production level for their operation.

The cost for the higher coverage protection will be the lesser of 5.25 percent of the producer's guarantee or \$6,563, plus the applicable NAP administrative fee(s). The NAP administrative fee per policy is \$250 per crop per producer with a \$750 cap per county. NAP coverage begins 30 days after the application is

filed and the non-refundable administrative fee has been paid.

Producers who are considered limited resource, beginning farmer, and/or traditionally underserved, as determined by FSA provisions, would have the service fee waived and a premium reduction for the expanded coverage.

Remaining 2018 NAP application coverage closing dates are: Feb. 1, 2018 - Maple sap; March 15, 2018 - Spring-seeded crops and pasture; and May 1, 2018 - Ornamental nursery.

Producers who currently have NAP coverage or who are interested in coverage need to keep an accurate record of their production, report acreage of the crops to FSA annually, and promptly notify FSA when losses occur.

Producers with questions about NAP coverage should contact the Rock County FSA Office at 283-2369 ext. 2 prior to the applicable application deadline.



The "Towne Square" development of retail and housing will open in 2019 on the former Sharkee's and Mert's Repair lots along South Highway 75. Additional residential housing proposed for the east end of that block along Hatting Street (between Highway 75 and Freeman Avenue) would represent an estimated \$4 to \$8 million worth of new construction.

Luverne growth/continued from page 1A

years has been \$12 million per year.

The biggest building year in recent history was in 1997 when 388 permits were issued with a total valuation of more than \$32 million.

The Luverne Elementary School and ethanol plant together that year accounted for about \$25 million of that 1997 total.

Other commercial projects that year included the new Pamida building, Glen's Food Center addition, Family Drug building and other commercial projects, plus 17 single-family homes.

Generally speaking, building activity in the next three years will be like nothing Luverne has ever seen, and that has city planners scrambling.

"Our housing market is already tight," said EDA Director Holly Sammons. "That's why we're working so hard on new housing development; this is really going to have an impact."

Housing for construction workers alone presents unique challenges, with some large crews living in a town for a year or 18 months at a time for major projects.

Baustian said some housing projects may be ready in time to alleviate growing pains, but he said it's going to be challenging.

"It's just phenomenal," he said. "The city of Luverne is very fortunate to be in this enormous economic growth opportunity for the next three to five years."



Papik picks of the week...



2017 GMC Terrain SLT
 10K • Stock #212482N **save \$4,000**
 was \$30,990 now \$26,990



2016 GMC Sierra SLT
 38K • Stock #108276N **save \$5,000**
 was \$39,990 now \$34,990



2017 Subaru Forester
 9K • Stock #39976N **save \$3,000**
 was \$27,990 now \$24,990



2014 Chrysler Town & Country
 72K • Stock #108083N **save \$4,000**
 was \$19,990 now \$15,990

283-9171

PAPIK.COM I-90 Luverne, MN 56156



CELEBRATIONS

Births

A boy, Colt Lyle Siebenahler, weighing 7 pounds, 11 ounces, and 20 inches long, was born Tuesday, Dec. 5, 2017, at Sanford Health in Sioux Falls, South Dakota, to **Nathan and Maggie Siebenahler**, Luverne. He joins one sibling, Raelyn. Grandparents are Jerry and Pam Kuhlman, Hardwick, and Mark and Wendy Siebenahler, Luverne. Great-grandparents are Gloria Monger, Jasper, and Carol Kuhlman, Luverne.

Card showers

Kay Franklin will celebrate her 102nd birthday Tuesday, Jan. 9. Greetings may be sent to her at 110 S. Walnut, Luverne, MN 56156.

Julie Fick will celebrate her 50th birthday on Friday, Jan. 5. Greetings may be sent to her at 1659 71st St., Luverne, MN 56156.

MENU

Monday, Jan. 8: Creamy vegetable soup with crackers, turkey sandwich, fruit cup, cookie.

Program: Pinochle.

Tuesday, Jan. 9: Cubed roast beef in gravy, mashed potatoes, peas, dinner roll, pudding dessert.

Program: Two-buck Tuesday sponsored by McClure Electric.

Wednesday, Jan. 10: Chicken and rice, tropical fruit, lettuce with dressing, bread, bar.

Thursday, Jan. 11: Liver or pepper steak, au gratin potatoes, carrots, bread, fruit crisp.

Friday, Jan. 12: Meatballs in gravy, mashed potatoes, stewed tomatoes, bread, ice cream.

Program: Red Hats; Game Day.

Senior Dining offers well-balanced and affordable meals in a community atmosphere.

Gift certificates are available at the meal site or online at www.lssmn.org/nutrition.

Call Laurree Teunissen at 283-9846 to make dining reservations or for home-delivered meals.

Taking one's mind off winter's chill

More than 20 adults and children took advantage of the Friends of the Library event called Game Day Wednesday afternoon, Dec. 27, in the Rock County Community Library basement. The Friends group purchased new board games for the event and will have the games available for future play in the library during library hours. The group also provided snacks and beverages for the holiday break activity. Temperatures outside reached a high of 8 above zero by the 2 p.m. event, climbing from a morning low of 15 below zero.

Gemma Nelson tries repeatedly to roll a 3 on the die as she plays a game of "Tenzi."



Mavis Fodness photos/0104 Game Day

Tina Petronek (far right) explains how to play the card game "Exploding Kittens" to (from left) Katherine Pizel, Andrea Luitjens and Linkon Knorr. **Below:** Trying to save the world from health scares in the board game "Pandemic" are (from left) Teegan Anderson, Xavier Mckenzie and Britton Mckenzie.



Lilian Palmquist (left) waits as Regan Mehlhaff finishes her turn.



PEOPLE IN THE NEWS

Kenneth native Justin Rust earns U.S. Air Force promotion

Justin Rust, Heerlen, Netherlands, was recently selected to receive the rank of chief master sergeant, the highest enlisted rank with the U.S. Air Force.

Rust is the son of Kraig and Pat Rust, rural Kenneth, and the grandson of Bud and Gloria Rust, also of rural Kenneth, and Joan Heeren Luverne. He joined the military in 2000. Rust's achieve-

ment is ahead of the Air Force average of 20 years in receiving the chief master sergeant rank.

Currently, Rust is stationed at the NATO Air Base in Geilenkirchen, Germany.

The promotion becomes effective in June. He and his wife, Judith, have a daughter, Inesita.

Luverne's Shirley Top named FMH top-producing agent

Shirley Top with Kozlowski Insurance Agency and Financial Services of Luverne was recognized as a top-producing crop insurance agent for Farmers Mutual Hail Insurance Company of West Des Moines, Iowa.

Top placed 28th in the company's top 50 agents in crop hail premium. She also ranked fifth in Minnesota for combined multi-peril crop insurance and crop hail premium in 2017. In 2016 Top was eighth.

1952: Rural schools to make decision to join Luverne district

The following appeared in the Rock County Star Herald on Jan. 24, 1952.

Consolidation Question Now Up To Residents Of District

Residents of rural school districts adjacent to Luverne must now determine whether or not they wish to consolidate with the Luverne district.

At a meeting held here last Wednesday, the 50 rural school board members, representing 16 districts, were advised by B. N. Hendrickson, state survey consultant from the Minnesota Department of Education, to "talk it over and get the consensus of opinion on how the people in your district feel about the consolidation question."

The meeting, which was held at the Luverne high school, with the Luverne school board in attendance, consisted of a question and answer period with Mr. Hendrickson answering questions from the rural school board members.

Earlier in the meeting Mr. Hendrickson outlined how consolidation would affect each district, what benefits the rural areas would derive and in general covered the topic thoroughly.

Cross Section of People

Information obtained by the board members, Mr. Hendrickson said, should be gathered so that it carries a cross section of all the people. This information should be brought in to V. M. Barrett, county superintendent of schools, Mr. Hendrickson added.

The question of time was brought up as to when this information should be brought in and it was generally agreed it would take from two to three weeks.

No date was set for the next meeting, but it was felt when a meeting was desired, arrangements could be made.

The first meeting on the proposed consolidation question was held in Luverne January 7 with rural school board members and Luverne school board members getting together to discuss the consolidation.

The purpose of the consolidation as outlined at the first meeting would give all the school districts, which consolidate a united education program with equal educational



Bits by Betty

By Betty Mann, president Rock County Historical Society

opportunity for all, it was pointed out.

Mr. Hendrickson was also present at the first meeting when he gave a talk on consolidation and answered questions from the floor.

The feeling of most school board members is that the question now rests with the people.

Shortage of Rooms, Teachers

The need has been felt for an answer to the growing shortage of rooms, especially grades one through six and the increasing shortage of teachers, which as one member said, "will get a lot worse before it gets better."

Under consolidation, the rural areas would have representation on the Luverne school board. As it stands now, they have no voice on the board. This is usually divided evenly between town and country.

Consolidation would give the rural districts the facilities of an enlarged group, increased valuation and there would be more money behind each student and additional services, school officials pointed out.

Donations to the Rock County Historical Society can be sent to the Rock County Historical Society, 312 E. Main Street, Luverne, MN 56156.

Mann welcomes correspondence sent to mannmde@iw.net.

REMEMBER WHEN

10 years ago (2008)

The former law enforcement center is nearly gutted, nearly ready to be remodeled into the future Rock County Heritage Center.

Dick Naughton owns the construction firm that's handling the remodeling, and they also built the Veterans Memorial.

Naughton said, "It's very important to us to save that existing building. It's so rare to have a beautiful building with indigenous stone. ... We're really excited. It's a fun project." ...

The building is gutted with the exception of two of the four jail cells and some jail floors, which are made of stone 5- to 6-inches thick.

Dick Naughton said, "The only real challenge has been the jail cells because they are incredibly heavy and it's difficult to cut and remove them."

25 years ago (1993)

Abandoned wells are a potential hazard to the county water supply.

"Anywhere you've got a hold going to the water table or to an aquifer, you have a conduit for contamination," said Rock County Environmental Officer Rick Dillon.

To protect the water supply, the state of Minnesota has a \$10,000 grant for well-sealing that goes into effect this year in the county. It will be a cost-share program with the state reimbursing well owners for 80 to 90 percent of the cost of sealing wells.

While the state cannot force people to seal wells, they are encouraging them to do so.

Wells must be sealed by licensed well drillers who are registered through the Minnesota Department of Health.

50 years ago (1968)

The change in appearance of Luverne's water will be a gradual thing despite the fact that the two water filtration plants are now operating.

This revelation no doubt will cause some consternation to housewives doing the family wash, and to the man who hopefully draws a glass of clear H-2-O. The fact is that it will be some time next spring before water shows any constancy of clearness — minus its iron and manganese properties.

The main reason is the residue that has built up in already

existing water lines through the years. This corrosion simply won't disappear into thin air but must be flushed out through household faucets and through periodic openings of fire plugs via the city's network of water lines.

Luverne's water system currently supplies some 1,800,000 gallons per day. The city uses a million-and-a-quarter gallons per day and MID Packing draws 555,000 gallons per day on average.

75 years ago (1943)

Is it true that birth rates increase and more boys than girls are born during periods of war?

Facts made public by the local hospital here yesterday indicate that it is, for they show almost a 20 percent increase in the number of births in 1942 over 1941 and that boys outnumbered girls 10 to 7.7.

A total of 177 babies were born at the hospital this year, 100 of them being boys and the remainder girls. Last year 149 children were born during the same period.

100 years ago (1918)

People who have looked upon the "Thrift Stamps" and "War Savings Stamps" as inconsequential are due to have a new idea in regard to them before long. The various banks in Rock county that are handling these stamps and certificates for the government report that the demand for them is unexpectedly large and that it is surprising how many people including children are buying the stamps.

The "Thrift Stamps" which cost only 25 cents, do seem at first glance to be a pretty slow way, both in saving money and helping the government to finance the war. Practice, however, is showing that in this method a surprisingly large amount of money can be saved in different ways. Traveling men, for instance, are in many instances saving their bus fare by walking and investing the 25 cents thus saved each time in a "Thrift Stamp" and the number of stamps they acquire in this way mounts into a considerable sum in a short time. Other men buy a stamp every time they buy a quarter's worth of cigars, and they, too, are surprised at the number of stamps they are accumulating. Children who formerly spent their nickels and dimes for candy, but since the "Thrift Stamps" came out have been saving this money and investing it in stamps, likewise are learning that they spent more money for candy than they imagined.

OBITUARIES

Gladys Buss

Gladys Lucille Buss, 95, west of Lismore, died Friday, Dec. 29, 2017, at the Sanford Luverne Hospice Cottage.



A funeral service was Tuesday, Jan. 2, at the Dingmann Funeral Home in Adrian. Burial was in the Adrian Cemetery.

Gladys Stuckenbroker was born Dec. 2, 1922, to John and Elizabeth (Peters) Stuckenbroker on a farm north of Hardwick. She attended country school in rural Rock County.

Gladys married Jake Buss on June 27, 1943, in Ellsworth. The couple moved to a farm west of Adrian from 1944 to 1946. In 1946 they moved to the farm south-

west of Lismore. Jake died on March 19, 2010. Gladys moved off the farm on Dec. 6 of this year.

She was a member of the First Presbyterian Church in Lismore and the Presbyterian Women. She enjoyed cooking, baking, gardening, listening to old time music and dancing.

Gladys is survived by four children, Betty Jean Kafka, Sarasota, Florida, Darlene (Gerald) Thaden, Marvin, South Dakota, Jake Buss Jr., rural Lismore, and Burdell Buss, St. Paul; five grandchildren, Anita Slagle, Ardell (Cathy) Kafka, Jane (Steve) Lawson, Rodney (Rebecca) Thaden and Aurora (Jody) Heard; and seven great-

grandchildren, Anthony Kafka, Natalie Thaden, Leroy Thaden, Prairie Lawson, Kerrie Lawson, Ella Heard and Luke Heard; a brother, Harry (Doris) Stuckenbroker, Pipestone; two brothers-in-law, Donald Schmuck, Ellsworth, and Dale Hawes, Luverne; and a sister-in-law, Helen Stuckenbroker, Hardwick.

She was preceded in death by her parents; her husband, Jake; a son, Stanley Buss; a son-in-law, James Kafka; three sisters, Arlene Sievert, Viola Schmuck and Judy Hawes; two brothers, Alvin and Johnny Stuckenbroker; and an infant sister, Helen.

Arrangements were provided by Dingmann Funeral Home of Adrian, dingmannandsons.com.

(0104 F)

Priscilla Kracht

Priscilla Kracht, 96, Luverne, died Wednesday, Dec. 27, 2017, at the Sanford Luverne Hospice Cottage.



A funeral service was Saturday, Dec. 30, at the Dingmann Funeral Home in Luverne. A private family burial followed the reception at the Maplewood Cemetery.

Priscilla Veldkamp was born March 6, 1921, to Bert and Sadie (DeJong) Veldkamp in the family home near Inwood, Iowa. She attended country school through the eighth grade. She helped her father with the farming operation.

On Dec. 28, 1944, she mar-

ried Bert Kracht of Rock Rapids, Iowa. They lived and farmed at Rock Rapids, Iowa, Doon, Iowa, Beaver Creek, and near Luverne for many years. Bert died in March 2001, and Priscilla continued to live on the farm for a couple of years before moving into an apartment in Luverne. She later moved to Mary Jane Brown Home and then the Sanford Luverne Hospice Cottage.

Priscilla enjoyed working beside her husband and family on the farm. She loved her time with her family and friends. Her Christian faith was at the center of her life.

Priscilla is survived by

four children, Jean (Chuck) Williams of Dundee; Bernard (Linda) Kracht of Tripoli, Iowa; Roger (Barb) Kracht of Luverne; and Shirley Patten of Grinnell, Iowa; 11 grandchildren; 24 great-grandchildren; one great-great-granddaughter; a brother, Don (Joan) Veldkamp of Springfield, Missouri; in-laws Lawrence (Cleo) Foes, Dick Kracht, Pete (Bernice) Kracht, Albertha Flatberg, Henrietta (Lowell) Wirtjes; many nieces and nephews; and friends.

Memorials are preferred to the Sanford Luverne Hospice Cottage at 211 E. Main St., Suite 101, Luverne, MN 56156.

Arrangements were provided by Dingmann Funeral Home of Adrian, dingmannandsons.com.

(0104 F)

Delores Strassburg

Delores Maxine Strassburg, 93, Luverne, died Monday, Dec. 25, 2017, at the Sanford Luverne Medical Center.



A funeral service was Friday, Dec. 29, at Grace Lutheran Church in Luverne. Burial was in the Kenneth Cemetery.

Delores Schmuck was born Jan. 24, 1924, to Henry and Augusta (Schuldt) Schmuck in Springwater Township. She was confirmed at the Zion Lutheran Church in Luverne and attended school in Rock County.

Delores married Willard Strassburg on Aug. 7, 1940, in Luverne. The couple farmed north of Kenneth. In 1962 they

moved into Kenneth. Delores and Willard purchased the grocery store in Kenneth in 1975 and operated it for over five years before retiring.

She was a former member of the Kenneth Lutheran Church where she taught Sunday school and belonged to the Ladies Aid and Altar Guild. Delores was a current member of Grace Lutheran Church. She enjoyed baking, cooking and gardening.

Delores is survived by six children, Delmer (Dee) Strassburg, Nicollet; Jacqueline Claussen, Pace, Florida; Joycelyn Erickson, Hen-

dricks; Janice (Russell) Jonas, Luverne; Jolene (Allan) Baumann, Loveland, Colorado; and David (Kathy) Strassburg, Luverne; a daughter-in-law, Jill Strassburg, Lakeshore, California; 24 grandchildren; 29 great-grandchildren; and six great-great-grandchildren.

She was preceded in death by her parents; her husband, Willard, on May 29, 1994; a son, Dale; a granddaughter, Jessica Baumann; two sons-in-law, Lee Claussen and Paul Erickson; three brothers, Alvin, Elmer and Lester Schmuck; and two sisters, Irene Arnold and Leone Staefler.

Arrangements are provided by Dingmann Funeral Home of Adrian, dingmannandsons.com.

(0104 F)

Mary Efting

Mary Efting, 92, Adrian, died Saturday, Dec. 23, 2017, at the Good Samaritan Society in Pipestone.



A celebration of life will be at the Dingmann Funeral Home in Adrian in the spring to allow family traveling from a distance to attend.

Mary Eshleman was born Dec. 27, 1925, to Charles and Henrietta (Wheeling) Eshleman in Adrian. She attended school in Adrian.

Mary married Elmer "Chick" Efting on May 9, 1945,

in Aurora, Colorado. Shortly after their marriage, the couple returned to Adrian. They owned and operated Chick's Produce, buying eggs from area farmers for over 20 years. They moved to Pierre, South Dakota, in 1967. In 1993 they moved back to Adrian. Mary became a resident of the Good Samaritan Society in 2015.

She was a member of the United Methodist Church in Adrian.

Mary is survived by her daughter, Jo (Dale) McClure, Jasper; a son, Bill (Carol) Efting,

Glenwood Springs, Colorado; four grandchildren, Angela (Craig) Ellerbroek, Sioux Falls, South Dakota, Lindsay (Chris) Hovden, Yankton, South Dakota, Brady (Alejandra) Efting, Denver, Colorado, and Casey Efting, Denver; four great-grandchildren; and three sisters, Nancy (Hugh) Sims, Lois (Walter) Ulrich and Betty (Paul) Hasse.

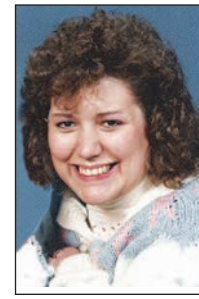
She was preceded in death by her parents, her husband, Elmer, on Nov. 14, 2002, one sister, and five brothers.

Arrangements are provided by Dingmann Funeral Home of Adrian, dingmannandsons.com.

(0104 F)

Carol Padrta

Carol Susan Padrta, 58, Detroit Lakes, died unexpectedly on Tuesday, Dec. 12, 2017, at Essentia Health St. Mary's in Detroit Lakes.



A memorial service will be at 6:30 p.m. Saturday, Jan. 6, at West Kjos Funeral Home in Detroit Lakes. Visitation will start at 4 p.m. Interment will take place in the spring/summer at Maplewood Cemetery in Luverne.

Carol Beug was born on June 15, 1959, to Herbert and Ramona (Boisen) Beug in Luverne. She attended school in Luverne until 1969 when her family moved to Detroit Lakes and purchased the Coast to Coast store. She continued her education in Detroit Lakes and graduated from Detroit Lakes High School in 1977. She graduated in 1981 from Bemidji State University with a bachelor's degree in elementary education.

Carol married Gary Padrta on June 14, 1986.

Following their marriage they lived in Colorado Springs, Colorado, where Gary was serving in the U.S. Air Force. In 1991 they were stationed at Spangham Air Base in Germany. While in Germany they had a son, Matthew, in October 1992. Due to Matthew's special needs, they were later transferred to Langley AFB in Virginia, and their last stop was at Ellsworth AFB in South Dakota. They then made their home in Detroit Lakes.

Carol took great pride in taking care of Matthew, Gary, and their cats. She loved watching the Minnesota Twins, Trinity Broadcasting Network (Christian-based TV), Public Broadcasting Service (PBS), birds, and deer walking across the yard at dusk and early morning.

She is survived by her husband, Gary; a son, Mat-

thew; her mother, Ramona (Boisen) Beug of Detroit Lakes; brothers David (Mary) Beug of San Antonio, Texas, Bruce and Mark (Barb) Beug of Detroit Lakes, and Greg (Jacinda) Beug of Vail, Arizona; an uncle, Jarv (Darlene) Boisen of Luverne; an aunt, Ev (Marty) Steffel of Nevis; her father-in-law David Padrta Sr. of Mountain Home, Arizona; sisters-in-law Barbra (Todd) Padrta Linker of Mountain Home and Linda Beug of North Ridgeville, Ohio; a brother-in-law, David (Kathy) Padrta Jr. of Cannon Falls; and numerous cousins, nieces, nephews, and great-nieces and nephews.

Carol was preceded in death by her grandparents, John and Mabel Boisen and Paul and Elsie Beug; her father, Herbert Beug; a brother, Chris; an infant sister, Pamela; her mother-in-law, Britt Padrta; and a sister-in-law, Corrine Beug.

Arrangements are provided by West Kjos Funeral Home of Detroit Lakes, www.westkjos.com.

(0104 F)

Mark Verba

Mark Wayne Verba, 36, Luverne, died unexpectedly Monday, Dec. 25, 2017, at the Sanford Luverne Hospital.



A funeral service was Saturday, Dec. 30, at Grace Lutheran Church in Luverne, with burial at Maplewood Cemetery in Luverne.

Mark Verba was born on Dec. 21, 1981, to Doc and Lori (Raymond) Verba in Mitchell, South Dakota, where he was raised. He was baptized in the Lutheran faith on March 21, 1982, and received his confirmation in May 1996. Mark graduated from Mitchell High School in 2000. He furthered his education at Mitchell Technical College and completed his associate's degree in communications.

Mark then moved to Luverne, where he began his career as an installer and technician with the communications company that has become Vast Broadband.

On May 28, 2011, Mark married Nikki Brandt at Grace Lutheran Church in Luverne. They made their home in Luverne

and raised their family that included four children.

Mark enjoyed drag racing cars and throwing darts in both competitive leagues and tournaments. He loved being able to help fellow darters who had questions or just if they needed a special coach. Mark valued his family, friends and his service to others.

Mark is survived by his wife, Nikki; four children, Bailey Jacobsma, Brayden Jacobsma,

Zane Verba and Macoy Verba, all of Luverne; his parents, Doc and Lori Verba of Mitchell; a brother, Michael (Christine) Verba of Sioux Falls, South Dakota; his paternal grandmother, Joann Verba of Mitchell; his parents-in-law, Gary and Nancy Brandt of Beaver Creek; a niece, Tessa Verba; a sister-in-law, Kristi Brandt of Beaver Creek; a brother-in-law, Justin (Ashleigh) Brandt of Dell Rapids, South Dakota; other relatives and numerous friends.

He was preceded in death by his maternal grandparents, Junior and Darlene Raymond, his paternal grandfather, Edward Verba, and an infant nephew, Kye Verba.

Arrangements were provided by Hartquist Funeral Home of Luverne, www.hartquistfuneral.com.

(0104 F)

Ethna Hanson

Ethna Lorraine Hanson, 93, Oronoco, died Sunday, Dec. 31, 2017, at Rehoboth Adult and Elder Care in Oronoco.

A funeral service will be at 11 a.m. Friday, Jan. 5, at Michaelson Funeral Home in Kenyon. Interment will be in the Brooklyn Evangelical Free Cemetery, rural Beresford, South Dakota.

Ethna Norling was born on April 27, 1924, to Joseph and Clara (Thompson) Norling in Clay County, South Dakota. She attended country school and graduated from Beresford High School in 1942. She continued her education

for one year at Rapid City School of Business.

Ethna's first job was at Gideon International in Chicago. She then took a job at Farmers Co-op in St. Paul and was later transferred to Sioux Falls where she met Don Hanson. She and Don were married at Brooklyn Evangelical Free Church in rural Beresford in December of 1953. They made their home in Luverne, where they operated Hanson Silo Company until retirement in 1981. They then moved to Sun City Arizona. When Don died in 1995, Ethna continued living in Arizona until 2006 when

she moved to Wanamingo to be closer to family. In 2012 she moved to Rehoboth in Oronoco. She was a member of the United Methodist Church in Kenyon.

She is survived by a niece, Beverly (Robert) Jacobsen of Kenyon, and a nephew, Dale Olson, of Sioux Falls, and nieces and nephews of Don.

She was preceded in death by her parents; her husband, Don; a sister, Lois Olson; a brother, Archie Norling; an infant sister, Ruby Fern Norling, and a nephew, Wayne Olson.

Arrangements are provided by Michaelson Funeral Home of Kenyon.

(0104 F)

Clara Rozeboom

Clara Joanne Rozeboom, 85, Leota, died Sunday, Dec. 31, 2017, at the Edgebrook Care Center in Edgerton.

A memorial service was

Wednesday, Jan. 3, at the Ebenezer Christian Reformed Church in Leota. Burial was at the Leota Community Cemetery.

The Leota Burial Association and Dingmann Funeral Home were in charge of arrangements.

(0104 DN)

WRAPPING PAPER & GIFT BAGS belong in your TRASH CAN



Luverne Love the life!
Rock County LAND MANAGEMENT

NOT RECYCLABLE



The City of Luverne & RC Land Management wishes you a Green Christmas

KICK OFF THE NEW YEAR WITH A SUPER CD RATE!

Fixed term. Fixed rate. Guaranteed return.

* APY is Annual Percentage Yield. Yield effective as of January 2, 2018 and subject to change. Substantial penalty for early withdrawal. Fees may reduce earnings.

2.01%^{APY*}

52 MONTHS

\$10,000 MINIMUM

MINNWEST BANK Doers Welcome™
minnwestbank.com Member FDIC

Star Herald lists births and deaths published in 2017

The Star Herald and Crescent staff compiles lists of birth announcements and obituaries that were published in 2017

Births announced in 2017

January
Jan. 3: Shane Amborn and Hilary Hanson, Luverne, a girl, Odette Adelia.
Jan. 23: Kalea Thompson and Cody Jagow, Westbrook, a girl, Charlie Ray.
Jan. 26: Brad and Cate Willers, Scandia, a boy, Owen Bradley Allen.

February
Feb. 13: Michael and Melissa Einck, Wilmont, a girl, Molly Jo.

March
March 5: Mitchell and Brianna Leuthold, Hills, a boy, Boyd Alan.

April
April 4: Brent and Heather Bielec, Lakeville, a girl, Edyn Faith.
April 7: Monti and Shannon Ossenfort, Foxboro, Mass., a girl, Landry Margot.
April 13: J.J. and Amy VonHoltum, Luverne, a boy, Dax James.
April 17: Derek and Rebecca Spykerboer, Steen, a girl, Hailey Ann.
April 19: Kyle and Kayla Hailey, Luverne, a boy, Mason Jacob.
April 23: David and Amelia Brake, Wilmont, a girl, Everly June.
April 28: Carl and Natalie Zeigler, Lake Charles, La., a boy, William Wayne.

May
May 20: Andrew and

Courtney Blenner, Schaller, Iowa, a girl, Jayden Carmilla.
May 24: Israel and Heather Zinns, Sioux Falls, S.D., a girl, Ava Elizabeth.

June
June 21: Halden and Erica Van Wyhe, Hills, a girl, Taya Jennie.
June 30: Andrew and Audra (Novotny) Sternke, Sioux Falls, S.D., a boy, Benjamin Louis.

July
July 8: Mitchell and Kayla Cox, Adrian, a boy, Merritt Richard.
July 17: Heath and Keri Petersen, Edgerton, a boy, Huck Keizer.
July 27: Brent and Mallory Chapman, Hillsboro, Ore., a girl, Jocelyn Marie.

August
Aug. 1: Cory and Vickie Buschwitz, Hills, a boy, Webb Paxton.

September
Sept. 16: Ethan and Maleeka Rozeboom, Hills, a girl, Sadia Rozeboom.

October
(none)

November
Nov. 28: Christopher and Gretchen Luze, Brookings, S.D., a boy, Cameron Christopher.

December
(none)

December 2016
Dec. 2: Boyd Landsman, 85, Luverne.
Dec. 25: Doris Plahn, 98, Garretson, S.D.
Dec. 27: Dorothy Britz, 74, Lakeville.
Dec. 28: Kathryn Aaker, 92, Luverne; Jason Krueger, 35, Luverne.
Dec. 29: Dennis Schmuck, 65, Luverne; Mavis Herman, 84, Luverne.
Dec. 31: Gerald Mahlberg, 76, Luverne.

January
Jan. 1: Darla Chavis, 47, Beaver Creek; Rosa Sandstede, 90, Hills.
Jan. 3: Judy Hawes, 75, Luverne.
Jan. 7: Ruby Viland, 97, Rock Rapids, Iowa.
Jan. 13: Ralph Sunde, 91, Luverne; Darrell DePauw, 72, Luverne.
Jan. 14: Dick Blom, 92, Luverne; Gladys Brandt, 87, Brandon, S.D.
Jan. 15: Douglas McClure, 87, Luverne; Judy Thies, 77, Luverne.
Jan. 16: Shirley Thoreson, 82, Luverne; Gerhard Fikse, 79, Gardnerville, Nev.
Jan. 19: Milton Hebig, 86, Lismore.
Jan. 21: Harlan Christians, 83, Little Rock, Iowa.
Jan. 23: John Granneman, 91, Lakeville; Marvin Nelson, 100, Sioux Falls, S.D.
Jan. 24: Ellen Cinkle, 89, Prior Lake.
Jan. 27: Mercie Domagala, 53, Luverne.

February
Feb. 1: Andrew Bosch, 84, Hills.
Feb. 4: Vincent Persing, 78, Leota; Melvin DeGroot, 63, Spencer, Iowa.
Feb. 9: Earl Glaser, 99, Luverne.
Feb. 11: Verna Rohlck, 80, Sauk Rapids.
Feb. 12: Alma Rowe, 93, Luverne.
Feb. 14: Mildred Heikes, 86, Ellsworth.
Feb. 18: Gordon Jensen, 85, Humboldt, S.D.
Feb. 19: Tim Christensen, 52, Luverne.
Feb. 20: Richard Hampton, 88, Luverne.
Feb. 25: David Granneman, 67, Coon Rapids.
Feb. 26: Wilbert Weis Jr., 66, Luverne.
Feb. 27: Doris Deragisch Blom, 82, Luverne.
Feb. 28: David O'Connor, 92, Pipestone; Tammie Swenson, 58, Luverne.

March
March 1: Jeane Van Lant, 86, Leota.
March 2: Catherine Fikse, 87, Hills.
March 4: Wilma Van't Hul, 93, Leota.
March 5: Lois Hatting, 78, Luverne.
March 7: Maurice DeWispelaere, 87, Balaton.
March 11: Bryce Smiens, 59, Luverne.
March 12: Pearl "Nellie" Smith, 91, Luverne.
March 15: Calvin Morrison, 59, Luverne.
March 18: Mavis Berkhof, 81, Steen.
March 21: Dorothy Buys, 78, Hardwick; Marvin Schettler, 71, Wilmont.
March 22: Dolores Berning, 84, Adrian.
March 23: Sylvester Lonneman, 88, Adrian.
March 25: Betty Lou Faber, 70, Harrisburg, S.D.
March 27: Terry Westerbur, 66, Adrian.
March 29: Kristi Baker, 59, Coleharbor, N.D.
March 30: Pamela Butler, 58, Fort Smith, Ark.
March 31: Paul Donth Sr., 77, Luverne.

April
April 5: Joan Vant Hof, 80, Edgerton; Dorothy Davis, 94, Andover.
April 6: Richard Hudson, 94, Luverne; Vern Baker, 60, Luverne; Mary Ann Hebig, 85, Fulda.
April 10: Carol Mulder, 72, Canton, S.D.
April 11: James Veldkamp, 82, Luverne.
April 13: Harold Brands, 74, Edgerton.
April 14: Eugene Erlandson, 98, Adrian; Lena Madison, 74, Brandon, S.D.; Arvin Rolfs, 78, Brooklyn Center.
April 18: Otto Bouma, 92, Luverne; Douglas Heeren, 62, Lead, S.D.
April 25: Johnny Stuckenbroker, 85, Hardwick.
April 29: Cyril Henning, 84, Adrian.

May
May 2: Alice Aukes, 97, Shakopee; Gary Frakes, 69, Magnolia, Texas.
May 7: Harriet Jordan, 81, Hills.
May 8: Mary Ann Eernisse, 65, Leota.
May 10: Gladys Kessler, 100, Mitchell, S.D.; Gerald Huisman, 81, Ellsworth.
May 11: Lylamae Vandenberg, 83, Luverne.
May 13: James Clark, 69, Sherman, S.D.
May 15: Herman Beyenhof, 69, St. Cloud; Verlyn Enninga, 84, Luverne.
May 16: Audrey Baker, 56, Worthington.
May 19: Alice Petersen, 82,

Dell Rapids, S.D.; Eldon Bush, 84, Luverne.
May 22: Dorothy Esselink, 92, Leota; Shane Klay, 46, Colton, S.D.
May 23: Howard Franken, 92, Luverne.
May 24: Laura "Louise" Hunter, 86, Luverne.
May 27: John Hoiland, 80, Sioux Falls, S.D.
May 28: Harold "Bud" Frey, 87, Luverne.
May 29: Johnnie Anderson, 85, Rock Rapids, Iowa.
May 31: Sharon Strand, 78, Ellsworth.

June
June 6: Arthur Dahlen, 84, Luverne.
June 7: Eleanor Ossenfort, 77, Fort Collins, Colo.
June 8: Barbara Connell, 90, Luverne.
June 14: Leo Bos, 59, Hills.
June 15: Daniella Gacke, 13, Luverne.
June 20: Dorothy Koens, 89, Luverne.

July
July 2: Blanche Schei, 84, Pipestone; Irma Dreckman, 94, Pipestone.
July 4: Leora Baustian, 82, Luverne.
July 6: Helen Heinrich, 82, Wisconsin Rapids, Wis.
July 7: Burdell Kruse, 73, Luverne.
July 8: Kevin Van Malsen, 57, Hills.
July 11: Constance Nash, 93, Luverne.
July 13: Francis Crawford, 87, St. Cloud.
July 14: LaVaye Dubro, 84, Iroquois, S.D.; Mae Top, 91, Hills.
July 15: Keith Mundahl, 91, Luverne.
July 16: Shirley Papik, 87, Luverne.
July 18: Lena Rust, 85, Magnolia.

August
Aug. 1: Richard Grussing, 47, Rushmore; Mary Merrill Hatrick, 62, Buffalo.
Aug. 2: Amanda Becker, 99, Rock Rapids, Iowa.
Aug. 6: Curtis Juhl, 83, Luverne; Juniper DenHerder, 2 months, Avon, S.D.
Aug. 7: Otto Houg, 96, Jasper.
Aug. 8: Lila Nelson, 81, Adrian.
Aug. 12: JoAnn Veldkamp, 64, Jasper.
Aug. 15: Florence Kitchenmaster, 94, Rock Rapids, Iowa.
Aug. 16: Debra Jo Martius, 65, Spearfish, S.D.
Aug. 17: Dennis Arp, 75, Sioux Falls, S.D.
Aug. 19: Harvey Rozeboom, 81, Hills.
Aug. 21: Tracy Strom, 56, Luverne.
Aug. 24: Florence Thomas, 98, Sioux Falls, S.D.
Aug. 25: Helen Biren, 81, Owatonna.
Aug. 27: Barbara Ball, 84, Luverne.
Aug. 29: Mary Osenga, 85, Leota.

September
Sept. 1: Nancy Winter Browne, 66, Eagan.
Sept. 3: Deborah Scoggins, 57, Luverne.
Sept. 7: Robert Riddle, 60, Luverne.
Sept. 8: Dale Dieltz, 95, Jasper; Michael Lorenzen, 62, Jasper.
Sept. 14: Mary Odland, 91, Luverne; Peggy Monk, 68, Pipestone; Eugene Ray, 83, Luverne.
Sept. 19: Janyce Baustian, 74, Hardwick; Dolores Dreesen, 85, Luverne.
Sept. 20: Toby Anderson, 87, Luverne.
Sept. 21: Odin Olson, 93, Minnetonka.
Sept. 22: Evelyn Thode, 92, Luverne.
Sept. 23: Billy Top, 63, Sibley, Iowa.
Sept. 26: Melvin Klooster, 79, Aitkin.
Sept. 27: Evelyn Stueven,

87, Luverne.
Sept. 30: Michael Bullerman, 59, Adrian.

October
Oct. 1: Vernon Engelkes, 83, Rushmore.
Oct. 4: Dale Hamann, 88, Luverne.
Oct. 6: James Taylor, 93, Adrian; Roger Sorenson, 69, Luverne.
Oct. 7: Jerilyn Kille, 65, Brandon, S.D.; Lyla Harnack, 77, Beaver Creek.
Oct. 9: Arie Drooger, 82, Edgerton.
Oct. 10: Howard Farmer, 75, Pipestone; Doris Schmuck, 89, Luverne.
Oct. 11: Mark Devinney, 63, Rapid City, S.D.
Oct. 13: Lenora Watry, 98, Adrian.
Oct. 15: Morris Eatherton, 76, Luverne.
Oct. 20: Duane Braun, 71, Worthington.
Oct. 21: Clifford Gilbertson, 91, Ellsworth.
Oct. 25: Verlyn Hoff, 62, Luverne.
Oct. 26: Warren Herreid I, 96, Luverne; Royce Becker, 82, Ellsworth.
Oct. 29: Walter Deutsch, 80, Luverne.
Oct. 30: Gerald Leech, 88, Luverne; Marjorie Boltjes, 87, Adrian.

November
Nov. 1: Arlene Mann, 83, Brandon, S.D.
Nov. 3: Robert Hellerud, 83, Hills.
Nov. 5: Sidney Berghorst, 85, Hills.
Nov. 6: Gerald Bosch, 92, Valley Springs, S.D.
Nov. 7: Erling Tofteland, 94, Luverne; Judith Henriksen, 72, Tomah, Wisconsin.
Nov. 8: Eleanor Lingbeck, 94, Ellsworth.
Nov. 12: Gertrude Aning, 94, Luverne; Gary Brown, 82, Shakopee.
Nov. 14: Howard De Weerd, 96, Edgerton; Joel Olson, 76, Moore, Okla.
Nov. 16: Cornie Veldhuisen, 88, Pipestone; Earleen Hinrichs, 65, Ellsworth; Isak Rye, 92, Luverne; Barbara Slieter, 85, Norfolk, Neb.; Roger Lorenzen, 66, Madras, Ore.
Nov. 24: Mildred Robinson, 99, Luverne; Charles Brown, 85, Afton.
Nov. 26: LeRoy Luitjens, 93, Luverne.
Nov. 27: Russell Van Voorst, 71, Luverne.
Nov. 28: Tracey Hoag, 41, Steen.
Nov. 29: Franklin LaBadie, 88, Beaver Creek.
Nov. 30: LaMoyné "Sam" Polzin, 86, Luverne; Suzanne "Sue" Buffington, 86, Luverne.

December
Dec. 2: Gary Koontz, 74, Greeley, Colo.; Esther Petersen, 96, Luverne; Elda Trisko, 89, Luverne.
Dec. 3: Daryl Nazarenus, 95, Luverne.
Dec. 4: Arthur Zylstra, 79, Edgerton; Vivian Helgeson, 82, Blackduck.
Dec. 5: Gayle Beers, 84, Luverne; LeRoy Emery, 81, Hector.
Dec. 6: Maggie Spronk, 91, Edgerton.
Dec. 8: Nyla Bullerman, 83, Adrian; Joyce Bristow, 79, Luverne.
Dec. 11: Marvin Doering, 81, Luverne.
Dec. 15: Irene Niessink, 100, Luverne.
Dec. 16: Meta Fick, 96, Luverne; Joan Mulder, 92, Worthington; Dorothy Williamson, 91, Garretson, S.D.
Dec. 19: Delvin Domagala, 79, Luverne; Pearl Sundem, 99, Hills.
Dec. 21: Ellen Kjenslee, 91, Mankato.
Dec. 22: Phyllis Murphy, 94, Brainerd.
Dec. 23: Stanton Petersen, 75, Luverne.

Obituaries published in the Star Herald in 2017

Jan. 28: Stanley Stehlik, 86, Jackson.
Jan. 29: Eugene "Willie" De Smet, 68, Hills.

February
Feb. 1: Andrew Bosch, 84, Hills.
Feb. 4: Vincent Persing, 78, Leota; Melvin DeGroot, 63, Spencer, Iowa.
Feb. 9: Earl Glaser, 99, Luverne.
Feb. 11: Verna Rohlck, 80, Sauk Rapids.
Feb. 12: Alma Rowe, 93, Luverne.
Feb. 14: Mildred Heikes, 86, Ellsworth.
Feb. 18: Gordon Jensen, 85, Humboldt, S.D.
Feb. 19: Tim Christensen, 52, Luverne.
Feb. 20: Richard Hampton, 88, Luverne.
Feb. 25: David Granneman, 67, Coon Rapids.
Feb. 26: Wilbert Weis Jr., 66, Luverne.
Feb. 27: Doris Deragisch Blom, 82, Luverne.
Feb. 28: David O'Connor, 92, Pipestone; Tammie Swenson, 58, Luverne.

March
March 1: Jeane Van Lant, 86, Leota.
March 2: Catherine Fikse, 87, Hills.
March 4: Wilma Van't Hul, 93, Leota.
March 5: Lois Hatting, 78, Luverne.
March 7: Maurice DeWispelaere, 87, Balaton.
March 11: Bryce Smiens, 59, Luverne.
March 12: Pearl "Nellie" Smith, 91, Luverne.
March 15: Calvin Morrison, 59, Luverne.
March 18: Mavis Berkhof, 81, Steen.
March 21: Dorothy Buys, 78, Hardwick; Marvin Schettler, 71, Wilmont.
March 22: Dolores Berning, 84, Adrian.
March 23: Sylvester Lonneman, 88, Adrian.
March 25: Betty Lou Faber, 70, Harrisburg, S.D.
March 27: Terry Westerbur, 66, Adrian.
March 29: Kristi Baker, 59, Coleharbor, N.D.
March 30: Pamela Butler, 58, Fort Smith, Ark.
March 31: Paul Donth Sr., 77, Luverne.

April
April 5: Joan Vant Hof, 80, Edgerton; Dorothy Davis, 94, Andover.
April 6: Richard Hudson, 94, Luverne; Vern Baker, 60, Luverne; Mary Ann Hebig, 85, Fulda.
April 10: Carol Mulder, 72, Canton, S.D.
April 11: James Veldkamp, 82, Luverne.
April 13: Harold Brands, 74, Edgerton.
April 14: Eugene Erlandson, 98, Adrian; Lena Madison, 74, Brandon, S.D.; Arvin Rolfs, 78, Brooklyn Center.
April 18: Otto Bouma, 92, Luverne; Douglas Heeren, 62, Lead, S.D.
April 25: Johnny Stuckenbroker, 85, Hardwick.
April 29: Cyril Henning, 84, Adrian.

May
May 2: Alice Aukes, 97, Shakopee; Gary Frakes, 69, Magnolia, Texas.
May 7: Harriet Jordan, 81, Hills.
May 8: Mary Ann Eernisse, 65, Leota.
May 10: Gladys Kessler, 100, Mitchell, S.D.; Gerald Huisman, 81, Ellsworth.
May 11: Lylamae Vandenberg, 83, Luverne.
May 13: James Clark, 69, Sherman, S.D.
May 15: Herman Beyenhof, 69, St. Cloud; Verlyn Enninga, 84, Luverne.
May 16: Audrey Baker, 56, Worthington.
May 19: Alice Petersen, 82,

Dell Rapids, S.D.; Eldon Bush, 84, Luverne.
May 22: Dorothy Esselink, 92, Leota; Shane Klay, 46, Colton, S.D.
May 23: Howard Franken, 92, Luverne.
May 24: Laura "Louise" Hunter, 86, Luverne.
May 27: John Hoiland, 80, Sioux Falls, S.D.
May 28: Harold "Bud" Frey, 87, Luverne.
May 29: Johnnie Anderson, 85, Rock Rapids, Iowa.
May 31: Sharon Strand, 78, Ellsworth.

June
June 6: Arthur Dahlen, 84, Luverne.
June 7: Eleanor Ossenfort, 77, Fort Collins, Colo.
June 8: Barbara Connell, 90, Luverne.
June 14: Leo Bos, 59, Hills.
June 15: Daniella Gacke, 13, Luverne.
June 20: Dorothy Koens, 89, Luverne.

July
July 2: Blanche Schei, 84, Pipestone; Irma Dreckman, 94, Pipestone.
July 4: Leora Baustian, 82, Luverne.
July 6: Helen Heinrich, 82, Wisconsin Rapids, Wis.
July 7: Burdell Kruse, 73, Luverne.
July 8: Kevin Van Malsen, 57, Hills.
July 11: Constance Nash, 93, Luverne.
July 13: Francis Crawford, 87, St. Cloud.
July 14: LaVaye Dubro, 84, Iroquois, S.D.; Mae Top, 91, Hills.
July 15: Keith Mundahl, 91, Luverne.
July 16: Shirley Papik, 87, Luverne.
July 18: Lena Rust, 85, Magnolia.

August
Aug. 1: Richard Grussing, 47, Rushmore; Mary Merrill Hatrick, 62, Buffalo.
Aug. 2: Amanda Becker, 99, Rock Rapids, Iowa.
Aug. 6: Curtis Juhl, 83, Luverne; Juniper DenHerder, 2 months, Avon, S.D.
Aug. 7: Otto Houg, 96, Jasper.
Aug. 8: Lila Nelson, 81, Adrian.
Aug. 12: JoAnn Veldkamp, 64, Jasper.
Aug. 15: Florence Kitchenmaster, 94, Rock Rapids, Iowa.
Aug. 16: Debra Jo Martius, 65, Spearfish, S.D.
Aug. 17: Dennis Arp, 75, Sioux Falls, S.D.
Aug. 19: Harvey Rozeboom, 81, Hills.
Aug. 21: Tracy Strom, 56, Luverne.
Aug. 24: Florence Thomas, 98, Sioux Falls, S.D.
Aug. 25: Helen Biren, 81, Owatonna.
Aug. 27: Barbara Ball, 84, Luverne.
Aug. 29: Mary Osenga, 85, Leota.

September
Sept. 1: Nancy Winter Browne, 66, Eagan.
Sept. 3: Deborah Scoggins, 57, Luverne.
Sept. 7: Robert Riddle, 60, Luverne.
Sept. 8: Dale Dieltz, 95, Jasper; Michael Lorenzen, 62, Jasper.
Sept. 14: Mary Odland, 91, Luverne; Peggy Monk, 68, Pipestone; Eugene Ray, 83, Luverne.
Sept. 19: Janyce Baustian, 74, Hardwick; Dolores Dreesen, 85, Luverne.
Sept. 20: Toby Anderson, 87, Luverne.
Sept. 21: Odin Olson, 93, Minnetonka.
Sept. 22: Evelyn Thode, 92, Luverne.
Sept. 23: Billy Top, 63, Sibley, Iowa.
Sept. 26: Melvin Klooster, 79, Aitkin.
Sept. 27: Evelyn Stueven,

87, Luverne.
Sept. 30: Michael Bullerman, 59, Adrian.

October
Oct. 1: Vernon Engelkes, 83, Rushmore.
Oct. 4: Dale Hamann, 88, Luverne.
Oct. 6: James Taylor, 93, Adrian; Roger Sorenson, 69, Luverne.
Oct. 7: Jerilyn Kille, 65, Brandon, S.D.; Lyla Harnack, 77, Beaver Creek.
Oct. 9: Arie Drooger, 82, Edgerton.
Oct. 10: Howard Farmer, 75, Pipestone; Doris Schmuck, 89, Luverne.
Oct. 11: Mark Devinney, 63, Rapid City, S.D.
Oct. 13: Lenora Watry, 98, Adrian.
Oct. 15: Morris Eatherton, 76, Luverne.
Oct. 20: Duane Braun, 71, Worthington.
Oct. 21: Clifford Gilbertson, 91, Ellsworth.
Oct. 25: Verlyn Hoff, 62, Luverne.
Oct. 26: Warren Herreid I, 96, Luverne; Royce Becker, 82, Ellsworth.
Oct. 29: Walter Deutsch, 80, Luverne.
Oct. 30: Gerald Leech, 88, Luverne; Marjorie Boltjes, 87, Adrian.

November
Nov. 1: Arlene Mann, 83, Brandon, S.D.
Nov. 3: Robert Hellerud, 83, Hills.
Nov. 5: Sidney Berghorst, 85, Hills.
Nov. 6: Gerald Bosch, 92, Valley Springs, S.D.
Nov. 7: Erling Tofteland, 94, Luverne; Judith Henriksen, 72, Tomah, Wisconsin.
Nov. 8: Eleanor Lingbeck, 94, Ellsworth.
Nov. 12: Gertrude Aning, 94, Luverne; Gary Brown, 82, Shakopee.
Nov. 14: Howard De Weerd, 96, Edgerton; Joel Olson, 76, Moore, Okla.
Nov. 16: Cornie Veldhuisen, 88, Pipestone; Earleen Hinrichs, 65, Ellsworth; Isak Rye, 92, Luverne; Barbara Slieter, 85, Norfolk, Neb.; Roger Lorenzen, 66, Madras, Ore.
Nov. 24: Mildred Robinson, 99, Luverne; Charles Brown, 85, Afton.
Nov. 26: LeRoy Luitjens, 93, Luverne.
Nov. 27: Russell Van Voorst, 71, Luverne.
Nov. 28: Tracey Hoag, 41, Steen.
Nov. 29: Franklin LaBadie, 88, Beaver Creek.
Nov. 30: LaMoyné "Sam" Polzin, 86, Luverne; Suzanne "Sue" Buffington, 86, Luverne.

December
Dec. 2: Gary Koontz, 74, Greeley, Colo.; Esther Petersen, 96, Luverne; Elda Trisko, 89, Luverne.
Dec. 3: Daryl Nazarenus, 95, Luverne.
Dec. 4: Arthur Zylstra, 79, Edgerton; Vivian Helgeson, 82, Blackduck.
Dec. 5: Gayle Beers, 84, Luverne; LeRoy Emery, 81, Hector.
Dec. 6: Maggie Spronk, 91, Edgerton.
Dec. 8: Nyla Bullerman, 83, Adrian; Joyce Bristow, 79, Luverne.
Dec. 11: Marvin Doering, 81, Luverne.
Dec. 15: Irene Niessink, 100, Luverne.
Dec. 16: Meta Fick, 96, Luverne; Joan Mulder, 92, Worthington; Dorothy Williamson, 91, Garretson, S.D.
Dec. 19: Delvin Domagala, 79, Luverne; Pearl Sundem, 99, Hills.
Dec. 21: Ellen Kjenslee, 91, Mankato.
Dec. 22: Phyllis Murphy, 94, Brainerd.
Dec. 23: Stanton Petersen, 75, Luverne.



LUVERNE AREA COMMUNITY FOUNDATION

150 Donations of \$150

in celebration of Luverne's 150th

Please consider the Luverne Area Community Foundation as part of your end of year donation planning. As our community celebration of 150 years comes to an end we are challenging 150 donors to give \$150 to help support our commitment to community.

Giving is a thoughtful and instinctual act of human nature.
We give to help others in need.
We give because we have extra to share.
We give to make a difference.

So please join us in making a difference and add your name to the list below.
 (If you prefer to remain anonymous with your gift we will honor that.)



Checks payable to
LUVERNE AREA COMMUNITY FOUNDATION
 P.O. Box 623 | Luverne, MN 56156

Please memo 150 for 150 on your check or you can make a credit card donation on our website at www.luvacf.org | All gifts are 100% tax deductible.

CURRENT DONORS

NEW DONORS THIS WEEK

Nathan and Molly Golla
 Elmer and Karen Menage
 McGinnis Company, PC
 Shirley Klosterbauer
 Ardell and Jayona Bowman
 Richard and Linda Bakken
 Dolly Talbert
 Gary and Janine Papik
 Roger and Maren Tollefson
 James and Paula Jelken
 Todd and Brenda Wessels
 William and Sherri Thompson
 Timothy and Karis Gust
 Jeff Bowen
 Ben and Deb Vander Kooi
 Rick and Carol Serie
 Tom and Sue Brakke
 Jason and Angela Chesley
 Tara, Jenna and Gracie Zewiske
 Wrede and Barbara Vogel
 Larry and Jane Lamphere
 Larry and Janice Nelson
 Exchange State Bank
 Damon and Kirsten Eisma
 Christmas Angel 1
 Christmas Angel 2
 Darlene Woolsey
 Mike and Rosie Reker

McClure Electric
 Curt and Jean Laudon
 Patrick and Angela Foerster
 James and Carol Hatting, in memory of our loved ones
 Gary Overgaard and Emily Lodeen
 Don and Lona Klosterbauer
 Tim & Connie Connell
 Betty Mann
 Terry and Michelle Vajgrt
 Greg and Dianna Spath
 Jere and Suanne Ohme
 Pat Scheidt
 Grace Lutheran Church Women
 Dave and Randa Gangestad
 Lowell and Diane Jauert
 Lewis Family Drug
 Dr. Richard and Carol Morgan
 Melvin and Denise Fick
 John and Nyla Sohl
 Grant Helling
 Bill and Janet Preuss
 Betty and Keith Luethje
 Eric and Cheryl Hartman
 Sanford Luverne Medical Center
 Agri-Energy, LLC
 Douglas and Carla Ennenga

Sandy Heck, in memory of Steven Heck
 Gary and Barb Golla
 Steve and Mary Jo Graphenteen
 Chuck and Jean England
 Dingmann Funeral Home
 Anna Tilstra
 Arlene Wynia
 Beryl Haugen
 Bob and Rhonna Jarchow
 Carol Kuhlman
 Cary and Karen Radisewitz
 Curt and Marilyn Bloemendaal
 Dale and Patti Nelson
 Dallas Bowron
 Daryl and Lynda Jacobsen
 Dianne and Rodger Ossenfort
 Don and Lisa Dinger
 Doug and Shellie Eisma
 Dr. Joshua and Emily Crabtree
 Dr. Harold Tilstra
 Dr. Nathan and Sandy Rud
 Dr. Paul and Janice Rud
 Drs. Stephan and Judy S. Chesley
 Elizabeth and Jason Schear

Everett and Janice Brandenburg
 Gawaine and Diane Diekevers
 Gene and Nadine Schoep
 Gertrude Den Herder
 Harold and Carol Stroh
 Harold and Lori Schmidt
 Hartquist Funeral Home
 Isaac DeBoer
 Jeff and Sara Hartquist
 Jerome and Delaine Jensen
 Jody and Sharla Reisch
 John and Brenda Call
 Keith and Velda Maine
 Leroy W. Luitjens
 Lowell and Shirley Harrison
 Mandy Skattum & Family
 In memory of Nate Skattum
 Mary Tilstra
 Merlin and Debra Wynia
 Michael and Cheryl Ann Cox
 Mike and Jennifer Engesser
 Randall and Vicki Smoak
 In memory of Johny Olsen
 Rick and Mary Peterson
 Rock County Eye Clinic, Dr. Sandra Carman
 Ryan and Charlotte Johnson
 Twila VerSteeg
 Wayne and Ann Robinson

24/7 ... Rain or Shine ...

Your local, independent agent will be there.



Working for you-meeting your needs.



South Hwy. 75, Luverne, MN • Ph. 507-283-2381

Auto-Owners Insurance

LIFE • HOME • CAR • BUSINESS



Sunday, Jan. 7
9am - 1pm
 Adults \$7.00 10 & Under \$3.00
American Legion
Luverne
 124 W Main

Call 283-2333 to advertise

Rock County 4-H celebrates 2017 with awards ceremony

"Fun for the Whole Herd" was the theme of the 2017 awards and recognition night for Rock County 4-H on Saturday, Nov. 4.

About 150 members, parents, leaders, and sponsors were on hand at the Luverne Elementary School commons to congratulate the recipients of a multitude of honors.

Rock County 4-H recognized local businesses that sponsored awards and door prizes.

2017-18 officers installed

The evening began with the installation of the newly elected Federation officers, who were presented with a pair of work gloves to remind them of the "chores" or duties of each specific officer position.

Installed were president Dylan Mente, vice president Hannah Kruse, treasurer Trevor Mente, secretary Michael Kinsinger, assistant secretary/reporter Whitney Elbers, youth leaders Joshua Raak and Christian Kruse, Extension committee representatives Hannah Kruse and Josie Scholten, adult treasurer Candy Reese, adult representatives Mike Uhl, Theresa Raak, Dawn Leenderts, Becky Ossefoort and Kory Kruse.

Ambassadors recognized

The Rock County 4-H Ambassadors were the hosts of the program and were recognized for being "on call" for the county office, and for providing youth leadership to many county 4-H programs. The Ambies for the past year were Ryleigh Beers, Moriah Flanagan, Michael Kinsinger, Christian Kruse, Hannah Kruse, Trevor Mente, Michaela Sandbulte, Josie Scholten, Kristoffer Severson, Mira Uithoven, and McKenna Westphal.

Club honors

4-H clubs were also recognized. The Luverne Area Chamber of Commerce sponsors awards for Community Pride activities.

This year the Livewires Club won top honors for their activities, which included making sensory blankets for the Minnesota Veterans Home and for reading to residents at the Mary Jane Brown Home.

The Blue Ribbon Club took second place for their Community Pride project helping residents at the Tuff Home and Village with various projects including planting flower buckets and taking them to the fair for open class in July. Blue Ribbon also filled candy bags for Project Love and helped with a community benefit for a boy injured in a motorcycle accident and various other service projects.

The clubs also compete for awards based on the activities they do as a club. They receive points for attendance, having project meetings, the percentage of members that do demonstrations and project talks, having recreation, and so on.

The first-place Active Club Award was sponsored by Pizza Ranch and went to the Denver Go-Getters. Second place was sponsored by Hometown Shopko and was awarded to the Livewires.

The club recognized for having the highest percentage of members complete their re-enrollment for the new program year was Denver Go-Getters.

Individual awards

For individual award recognition, the clubs' names will be abbreviated as follows:

Blue Ribbon Club (BR), County K9s (K9s), Denver Go-getters (DGG), Livewires (LW), Magnolia Juniors (MJ), Springdell (SD), and Willing Workers (WW).

Recognition was given to a large group of our youngest 4-H members, the Cloverbuds, ages kindergarten through second grade.

Receiving those awards were Klarissa Burkman, Jed Fagerness, Hailey Moser, Maxwell Sammons, Ava Steinhoff and AnnMarie Wiersema from BR; Hendrik Bork, Gabriella Porter, and Adalyn Uithoven from K9s; Paige Blom, Keagan Jessen, Brynlee Lass and Trenton Lass from DGG; Andrew Deutsch, Allison Honken, Joshua Honken and Dakotah Sina from LW; Brody Buntjer, Blakely Fick, Hudson Hough, Lucas Madison, Evan Ossefoort, Josiah Pap and Kailee Sandbulte from MJ; Dylan



Elected Federation officers for the 2017-18 4-H program year are (front, from left) Mike Uhl, Kory Kruse, Dawn Leenderts, Hannah Kruse, Theresa Raak, Becky Ossefoort, (back) Whitney Elbers, Joshua Raak, Trevor Mente, Mike Kinsinger, Christian Kruse and Dylan Mente.

Mavis Fodness photo/1116 Round Up 2017

Braucht, Colton Buchholz, Brenna Reker, and Emma Wolf from SD.

Members in their first and second years in 4-H can compete for Clover Power awards by participating in club and county activities through the year.

Recipients included Andrea Honken, Janica Oechsle, Makayla Oechsle, and Maria Rops from LW; Gretchen Jacobsma, Brianna Kinsinger, Andrea Luitjens and Austin Sandbulte of MJ; Gracie Fagerness, Claire Knobloch, Mazzie Moore, Jack Moser, Samantha Moser and Larissa Steinhoff of BR; Emily Malsom and Alex Reker of SD.

The Fantastic 15 awards go to 15 members in grades 3-6 with the highest points for various activities such as participating in club activities, attending 4-H camp, exhibiting at county fair, filling out records and giving demonstrations. The winners received awards sponsored by the Rock County Star Herald. The Fantastic 15 awards were presented to Krista Burkman, Lanae Elbers, Mazzie Moore, Larissa Steinhoff and Joshua Wiersema of BR; Caleb Raak of DGG; Andrea Honken, Karly Kruse and Leah Kruse of LW; Brianna Kinsinger, Andrea Luitjens, Austin Sandbulte, and Dennie Sandbulte of MJ; Ashlyn Johnson of K9s; Sarah Stegenga of WW.

Youth in grade 7 or up compete for the Fab 15 awards, and received awards sponsored by Exchange State Bank and CHS Eastern Farmers Coop. The Fab 15 included Ryleigh Beers, Gretchen Jacobsma, Michael Kinsinger, Christian Kruse, Dylan Mente, Trevor Mente, Grace Sandbulte, Hunter Sandbulte and Michaela Sandbulte of MJ; Josie Scholten of BR; Jacob Raak, Joshua Raak and Kristoffer Severson of DGG; and Hannah Kruse of LW.

Project Achievement awards were presented to four deserving young people.

Achievement awards are "once in a lifetime" awards given to members who have done significant work over many years in one project area, and have shared their knowledge with others.

An Achievement Award in the area of Rabbit was sponsored by Rock Veterinary Clinic and awarded to Michaela Sandbulte, member of MJ and daughter of Paul and Amanda Sandbulte of Luverne.

Beef Achievement awards, sponsored by the Sherwood Cattle Company and Rock/Nobles Cattleman's Association, were presented to Trevor Mente, son of Dave and Stacy Mente of rural Adrian, and Hannah Kruse, daughter of Kory and Michele Kruse of rural Ellsworth.

The Swine Achievement award, sponsored by the Rock County Pork Producers, and the Youth Leadership Achievement award, sponsored by Quality Printing, were both awarded to Ryleigh Beers,

daughter of Brad and Jane Beers of rural Luverne.

The George A. Golla award is presented by the Golla Family annually to someone who has demonstrated an extraordinary display of 4-H qualities and has incorporated the 4-H values into their goals and their life.

After reflecting on those qualities, and the way they have given back to others and their communities, the award was presented to Josie Scholten of the BW. She is the daughter of Kraig and Kristi Scholten of Hills.

The ultimate youth leader award of the evening is the Outstanding Youth Leader award, sponsored by Minnwest Bank and the Rock County 4-H Federation.

This year two recipients were named the most outstanding youth leaders based on their active involvement in the 4-H program at the county and state level, providing leadership to younger members, and being a wonderful role models.

The recipients were Hannah Kruse, LW, and Michael Kinsinger, MG. Michael is the son of Teresa and Shawn Kinsinger of Luverne.

Scholarship recipients were Moriah Flanagan, sponsored by Teal's and Reisch Fund, and Elizabeth Klamm, Jared Leuthold, Joshua Powell, and Kristoffer Severson, sponsored by the Reisch 4-H Fund.

Mira Uithoven and Moriah Flanagan also received the regional Andrea Ruesch Scholarship.

Graduating members were Ryleigh Beers of MJ; Andrew Raak of DGG; Thea Richards and Micah Stensland-Bos of BR; Jared Leuthold and Megan Popkes of LW; Tanner Baustian, Autumn Hamann of WW; Adam Fodness, Jenna Schellass and Mira Uithoven of K9s; and Elizabeth Klamm and Alex Uhl of SD.

Project Disk awards were also presented.

These are given in each of the project areas in 4-H based on the project records that the youth complete and submit for judging.

A group of adult and youth leaders gathered in October to select the top records in each project area. Those top record winners are:

Beef: Leah Kruse, LW; Karly Kruse, LW; Claire Knobloch, BR; Dylan Mente, MJ; Samantha Moser, BR; Jacob Raak, DGG.

Dairy: Caleb Raak, DGG; Jacob Raak, DGG.

Dog: Rebecca Austin, DGG.

Goats: Moriah Flanagan, SD.

Horse: Peyton Blom, DGG; Andrea Honken, LW; Gretchen Jacobsma, MJ

Pets: Ashlyn Johnson, K9s.

Poultry: Jo-Hannah Ladd, K9s; Mary-Frances Ladd, K9s; Christian Kruse, MJ.

Rabbit: Hunter Sandbulte, MJ; Grace Sandbulte, MJ.

Sheep: Gavin Johnson, WW; Quentin Johnson, WW; Nathan Kinsinger, MJ.

Swine: Alex Reker, SD; Will Stegenga, WW; Joshua Wiersema, BR.

Science of Animals: Moriah Flanagan, SD.

4-H Adventure: Larissa Steinhoff, BR.

Citizenship: Emily Malsom, SD. Clothing & Textiles: Lanae Elbers, BR; Morgan Gonnerman, WW; Brianna Jonas, MJ; Brianna Kinsinger, MJ; Candace Porter, K9; Grace Sandbulte, MJ; Sarah Stegenga, WW.

Communication Contest: Gretchen Jacobsma, MJ. Computer: Burke Johnson, K9s. Consumer Ed: Sarah Stegenga, WW.

Crafts & Fine Arts: Gracie Fagerness, BR; Alex Hartman, K9; Gretchen Jacobsma, MJ; Quentin Johnson, WW; Brianna Jonas, MJ; Claire Knobloch, BR; Tory Knobloch, BR; Emily Malsom, SD; Austin Ossefoort, MJ; Jacob Raak, DGG; Joshua Raak, DGG; Larissa Steinhoff, BR; Amber Wiersema, BR.

Electric: Alex Reker, SD. Engineering Design: Larissa Steinhoff, BR.

Exploring the Environment: Krista Burkman, BR; Dylan Mente, MJ.

Exploring Animals: Caleb Raak, DGG.

Food and Nutrition: Rebecca Austin, DGG; Gracie Fagerness, BR; Leah Kruse, LW; Sarah Stegenga WW; Larissa Steinhoff, BR; Amber Wiersema, BR.

Forest Resources: Krista Burkman, BR.

Geology: Krista Burkman, BR. Global Connections: Ryleigh Beers, MJ.

Health: Leah Kruse, LW; Caleb Raak, DGG.

Home Environment: Morgan Gonnerman, WW; Alex Hartman, K9s; Austin Ossefoort, MJ; Kaylie Ossefoort, MJ; Sarah Stegenga, WW.

Indoor Gardening: Rebecca Austin, DGG; Sarah Stegenga, WW. Performing Arts: Hannah

Kruse, LW; Leah Kruse, LW; Allison LaRock, BR.

Photography: Krista Burkman, BR; Rachel DenHerder, MJ; Ashlyn Johnson, K9; Nathan Kinsinger, MJ; Trevor Mente, MJ; Samantha Moser, BR; Claire Popkes, LW; Amber Wiersema, BR; Joshua Wiersema, BR..

Potato: Emily Malsom, SD.

Quilting: Hannah Kruse, LW; Leah Kruse, LW; Janica Oechsle, LW; Joshua Wiersema, BR.

Tractor: Emily Malsom, SD.

Safety: Alex Reker, SD.

Self-Determined: Jacob Raak, DGG.

Shooting Sports/Wildlife: Lanae Elbers, BR; Justin Mente, MJ.

Shop/Wood Science: Allison LaRock, BR; Justin Mente, MJ; Cody Moser, BR; Will Stegenga, WW; Joshua Wiersema, BR.

Vet Science: Hannah Kruse LW; Leah Kruse, LW; Karly Kruse, LW. Wildlife Biology: Mazzi Moore, BR.

Youth Leadership: Moriah Flanagan, SD.

Adult recognition

Adult Volunteers were honored for their years of service and contributions to Rock County 4-H as well.

Receiving recognition for 45 years, Lowell Jauert; 40 years, Rollie Crawford; 30 years, Clair Crawford; 25 years, Curt Roos; 20 years, Doug Bos and Lynette Stensland; 15 years, Candy Reese; 10 years, Denise Severson and 5 years Sonja Braucht, Crystal Burkman, John Burkman, Jen Luitjens, Dawn VanderBeek, and Dennis VanderBeek.

Club Leaders were also recognized. They included Dawn Leenderts, BR; Judy Chesley and Diana Hensley-Porter, K9s; Denise Severson and Theresa Raak, DGG, Michele Kruse, LW; Angie Sandbulte, Anita Kruse and Erin Jacobsma, MJ; John Flanagan and Anna Uhl, Michael Uhl, SD; and Andrea Johnson, WW.

Recognized as an Honorary 4-H'er for his years of supporting the 4-H program with a scholarship, donating the meat for the banquet each year and various other ways of support was Glen Gust.

Receiving the Friends of 4-H award for many years as club leaders and serving on several committees were John and Kari Flanagan.

Receiving the 4-H Alumni award for many years of giving back to 4-H through involvement as club leaders and as volunteers were Ed and Julie Mueller.

Rock County 4-H clubs' names are abbreviated as follows:

Blue Ribbon Club (BR), County K9s (K9s), Denver Go-getters (DGG), Livewires (LW), Magnolia Juniors (MJ), Springdell (SD), and Willing Workers (WW).

Girls win division title

By John Rittenhouse

The Luverne girls' hockey team went 2-0-1 to win the National Division title at the Schwan Cup last week.

The Cardinals posted wins over Arrowhead (Milwaukee, Wisconsin) and Fairmont and skated to a tie against Eveleth-Gilbert.

Luverne, 11-5-2 overall, skates in Fairmont Saturday.

LHS 4, Arrowhead 2

The Cardinals completed an undefeated showing during the Schwan Cup by doubling up Arrowhead Saturday at Ridder Arena in Minneapolis.

The score was tied at one after the first period of play, but the Cardinals scored three consecutive goals in the second and third periods to ice the win.

Kamryn Van Batavia, who netted two goals along with Claire Baustian, broke the tie by scoring twice in a span of 3:34 of the second period to give the Cards a 3-1 cushion.

Baustian recorded her second unassisted goal of the game 4:04 into the third period to complete the scoring for LHS.

Baustian gave the Cards a 1-0 lead 15 seconds into the contest, but Arrowhead tied the score at one when Emma Serres recorded a power-play goal with 4:22 left in the first period.

Arrowhead's Megan Waimer scored the final goal of the game with 4:01 left in the third period.

LHS, which came up on the short end of a 22-21 margin in shots on goal, received a 20-save outing from Emilie Bartels.

Lexi Henrichs and Reghan Bork recorded one assist each for the winners.

Luverne 2, E-G 2

The Cardinals remained unbeaten in the Schwan Cup by winning a shootout against Eveleth-Gilbert Friday at the Schwan Super Rink in Blaine.

The game will go down as a tie for both teams as the score was deadlocked at two after regulation play and an eight-minute overtime.

For tournament purposes, LHS gets credit for a win as the Cards prevailed in a shootout.

Both teams recorded two goals out of five chances during the shootout, sending the game to a sudden-death shootout.

After both squads came up empty in four attempts in sudden-death competition, Luverne's Brynn Thier netted a goal to settle the issue.

E-G got off to a good start in the first period as Brenna Cegler and Katie Scherf scored goals in the first 6:44 of the contest.

E-G's 2-0 cushion remained intact until the third period, when LHS scored twice to knot the tally.

Billi Connell netted the first goal for LHS after being set up by Baustian with 7:51 remaining in regulation play.

Van Batavia tied the game with an unassisted tally that came with 1:09 left in the period.

LHS, which was outshot 38-23 in the game, received a 36-save effort from Bartels in regulation play and overtime.

LHS 9, Fairmont 1

The Cardinals opened their

Schwan Cup by registering their fourth consecutive victory when they squared off against Fairmont at the Centennial Sports Arena Thursday in Blaine.

Luverne erupted for five first-period goals and outshot Big South Conference foe Fairmont 37-14 during an eight-goal victory.

Rylee Gee and Van Batavia netted two goals each to highlight the win.

Gee scored her first goal 53 seconds into the game before Shelby Kracht found the net to make it a 2-0 game less than two minutes into the contest.

Baustian scored the third goal of the period before Van Batavia netted a pair of goals in the final 2:50 of the stanza to make it 5-0.

Fairmont's MacKenzie Householder snapped Luverne's run when she opened the scoring 8:56 into the second period, but the Cards answered by scoring three goals in the final 7:53 of the frame.

Regan Feit recorded an unassisted tally before Paige Sandbulte scored at the 4:11 mark.

Bork added a goal with 2:29 remaining in the period to give the Cards an 8-1 cushion.

Gee capped her two-goal effort with an unassisted tally that came 8:40 into the third period.

Bork, Van Batavia, Feit, Mad-die Dinger and Gee recorded one assist each for the winners.

Bartels played a scoreless first period in goal before giving way to Cheyenne Schutz, who surrendered one goal in the final two periods.



John Rittenhouse photo/0104 abb 4

Adrian senior Ryan Wieneke releases an underhanded shot as he drives to the basket during Friday's home game against Fulda. Wieneke netted 18 points in a 79-66 loss.

Raiders rally to top Adrian boys

By John Rittenhouse

The Adrian boys' basketball team wrapped up play in 2017 by dropping a wild game to Fulda Friday in Adrian.

The Dragons sported sizeable leads in both halves of the contest, but a late push by the visiting Raiders gave them a 79-66 victory.

Adrian got off to a strong start by scoring the first eight points of the game as a part of a 14-2 run ending with a field goal from Ryan Wieneke at the 14:06 mark of the first half.

It looked as if the Dragons might turn the game into a rout when Christian Weidert turned an offensive rebound into a field goal at 9:09 that gave the Dragons a 24-10 advantage.

Fulda simply didn't let it happen.

The pesky Raiders climbed back into contention by put-

ting together an 18-4 run to knot the score at 28 with 3:52 remaining in the opening stanza.

AHS sported a pair of leads as the half progressed, but Fulda recorded the final field goal of the stanza to tie the game at 33.

The Raiders scored the first two points of the second half to gain their first lead (35-33) of the game.

Adrian, however, countered with a 14-2 run ending with a three-point play from Wieneke to open a 47-39 lead at the 13:48 mark of the half.

The Raiders tied the score at 56 at the end of a 17-9 run and moved in front by one (59-58) with 6:12 left to play.

Brady Henning drained a three-point shot at 5:26 to regain the lead (63-61) for the Dragons before Fulda reeled off six consecutive points to

move in front 67-63.

Wieneke trimmed the difference to one point (67-66) with a three-point shot moments later, but Fulda outscored AHS 12-0 the rest of the way to prevail by 13 points.

Wieneke (18 points, five rebounds and three blocked shots), Skylar Polzine (15 points and seven rebounds) and Weidert (10 points and six rebounds) led AHS statistically.

The 3-5 Dragons play at Edgerton Public School Friday.

Box score
Weidert 2 2 0-0 10, John 2 0 0-0 4, Wieneke 5 1 5-18, Ross 0 0-0 0, Henning 3 1 0-0 9, Veld 1 1 0-0 5, Reyne 0 1 0-0 3, Polzine 7 0 1-2 15, Luettel 1 0 0-0 2.

Team statistics
Adrian: 27 of 57 field goals (47 percent), six of seven free throws (86 percent), 28 rebounds, 11 turnovers.
Fulda: 26 of 72 field goals (36 percent), 15 of 17 free throws (88 percent), 30 rebounds, zero turnovers.

Boys fall twice in St. Paul tourney

By John Rittenhouse

The Luverne boys' hockey team went 1-2 and placed sixth at the South St. Paul Tournament last week.

The Cardinals took setbacks from Eagan and Hopkins and defeated St. Paul Johnson during the event.

Luverne, 8-3 overall, plays in New Ulm Thursday.

Hopkins 2, Luverne 1

The Cardinals capped a sixth-place showing at the eight-team tournament by losing a one-goal contest to Hopkins during Saturday's consolation championship game.

Luverne sported a 1-0 lead in the first period, but the Royals scored the final two goals of the game to claim the victory.

The Cardinals drew first blood in the contest when Declan Beers scored 4:21 into the game after being set up by Colby Crabtree.

Luverne's lead lasted until there was 5:43 remaining in the first period, when Ross Nordean tied the game for Hopkins.

Hopkins netted the game-winning goal with 4:48 left in the second period when Miles Halligan put the puck in the net.

Both teams had 38 shots on goal in the game.

Daniel Tofteland made 36 saves for the Cardinals.

Luverne 3, SPJ 1

The Cardinals qualified for the tournament's consolation championship by defeating St. Paul Johnson by two goals Friday.

The Governors sported a 29-25 advantage in shots on goal in the game, but the Cardinals received goals from three different players to secure the victory.

Beers gave the Cards a 1-0 lead 10 seconds into the game after being set up by Kasyn Kruse and Crabtree.

LHS took its 1-0 cushion into the second period, but SPJ's Joseph Moberg tied the game with a power-play tally 1:18 into the stanza.

The Cardinals answered the challenge by scoring twice before the second period was

complete.

Nick Harder put LHS in front 2-1 after being set up by Kruse and Beers at the 10:31 mark of the period.

Kruse netted an unassisted, short-handed goal with 7:55 remaining in the period to cap the scoring in the game.

Tofteland made 28 saves in goal for the Cards.

Eagan 4, Luverne 0

The Cardinals opened the tournament by taking a four-goal setback from the Wildcats Thursday.

Eagan controlled the contest by outshooting LHS 37-17 during a game in which the Wildcats netted at least one goal in every period.

Nick Sherk gave Eagan a 1-0 lead 7:47 into the game.

Eli Dolney scored twice in a span of 3:23 in the first seven minutes of the second period to make it 3-0.

Parker Swenson added a third-period goal for the Wildcats that came 1:26 into the final period.

Tofteland registered 33 saves in goal for LHS.

Nelson credits athletes, assistants for upcoming induction

A coaching career that spanned 32 years and four decades will be saluted next month in Bloomington.



The Bloomington Double Tree Hotel and Convention Center will be the site of the 2018 Minnesota State High School Track Coaches Association annual clinic that runs from Jan. 25-27.

Jan. 26 will be a big night for former Luverne High School counselor and track coach Craig Nelson, who will be inducted into the MSHSTCA's Hall of Fame during a ceremony that evening.

"That will be a very humbling evening for me," said Nelson, who was notified that he will be inducted into the Hall of Fame a couple of weeks ago.

FROM THE SIDELINES

By John Rittenhouse, sports editor

"I'm the one who had the word 'head' placed in front of the word coach for all of those years, but I know the success we had wasn't the result of something I did alone. I was fortunate enough to have a lot of great kids and assistant coaches during my years in Luverne. This recognition will be a positive reflection on our program, the assistant coaches and the kids we had over the years."

"That may be true, but I see the ceremony being the crowning achievement of a long and successful coaching run.

The success didn't come right away, but it didn't

take long for Nelson and all of the assistant coaches who served under him for 32 years to turn the LHS track program into one of southwest Minnesota's best.

"Shortly after I signed to be the LHS counselor prior to the 1984-85 school year, they asked me if I would be interested in being the head girls' track or golf coach," he recalled.

"I had to think about that offer for a while because I liked track and golf, but I decided to take the track job because I thought I could play golf in the summer months."

All things considered, it proved to be the right choice.

Nelson's first girls' track team placed 32nd out of 32 teams at the section track meet in 1985, and his second squad placed 13th at the section level.

LHS went on to win section championships the next three seasons (1987-89) and the success never stopped until he stepped down after the 2016 season.

Along with coaching the LHS girls' program for 32 years, he also became the head coach of the boys' program in 1992 and served in that capacity for 25 years.

His tenure included a combined 13 conference championships (nine girls' and four boys'), 31 sub-section championships (19

girls' and 12 boys'), 13 section championships (nine girls' and four boys') and two state championships (one girls' and one boys').

That's an impressive resume that includes many fond memories for Nelson, but he said it was the addition of True Team competition to the track scene back in 1987 that turned the fate of his program around.

"The True Team events allowed us to attract more kids to the program," he said.

"We had some kids who knew they couldn't beat the athletes we had like Connie Lais, Marcus Walgrave and Lynden Reder,

but they knew they could beat other kids from the area and it was a way for them to be a contributing member of a team."

Nelson's squads did find success in true team competition as the girls won 12 section titles and three state championships, while the boys won seven section titles.

"It was the addition of true team competition that made a big impact on our program. It helped build depth for our teams by attracting more kids," Nelson said.

"I had a great experience coaching track in Luverne, but the one thing I'm most proud of is how we made it successful by cultivating a team atmosphere. We had a lot of great kids who bought into our philosophy, and that's something that gives me great pride to this day."

St. Catherine Catholic Church
203 E. Brown St., Luverne
St. Catherine Ph.: 283-8502; email: stcatherine@iw.net
St. Mary Catholic Church, Ellsworth
Saturday, Jan. 6: 5:30 p.m. Mass at St. Catherine. Sunday, Jan. 7: 8:30 a.m. Mass at St. Mary. 10:30 a.m. Mass at St. Catherine.

Luverne Christian Reformed Church
605 N. Estey St., Luverne
Office Ph. 283-8482; Prayer Line Ph. 449-5982
www.luvernrcrc.com — sparksr@iw.net
Roger Sparks, Pastor
Sunday, Jan. 7: 9:30 a.m. Worship. 10:50 a.m. Sunday School and Catechism classes. 6:30 p.m. Worship. Monday, Jan. 8: 7 p.m. Friendship. Tuesday, Jan. 9: 9:30 a.m. Coffee Break/Story Hour. Wednesday, Jan. 10: 2:30 p.m. Faith Builders Bible Study. 7 p.m. Youth Group.

First Baptist Church
1033 N. Jackson St., P.O. Box 975, Luverne
Ph. 283-4091; email: fbcluv@iw.net — www.fbcluverne.org
Walt Moser, Pastor
Thursday, Jan. 4: 6 a.m. Men's Bible Study. 7 p.m. Worship service on Channel 3. Sunday, Jan. 7: 9:15 Sunday School. 10:30 a.m. Morning Service with Communion. 6 p.m. Evening Service. Tuesday, Jan. 9: 7 a.m. Men's Bible Study. 7 p.m. Deacon Meeting. Wednesday, Jan. 10: 6:30 p.m. Awana/Double Share Friend Night. Thursday, Jan. 11: 6 a.m. Men's Bible Study. 7 p.m. Worship service on Channel 3.

Grace Lutheran Church
500 N. Kniss Ave., Luverne
Ph. 507-283-4431; www.graceluverne.org — graceluverne@iw.net

Ron Nichols, Pastor; Stephen Hilding, Associate Pastor
Thursday, Jan. 4: 8:30 a.m. MIA. Friday, Jan. 5: 6:30 p.m. Worship on Channel 3. Saturday, Jan. 6: 5:30 p.m. Worship with Communion. Sunday, Jan. 7: Noisy Sunday. 8:15 a.m. Radio broadcast. 9 a.m. Worship with Communion. 10 a.m. Fellowship Coffee; Sunday School; Adult Study. Monday, Jan. 8: 4:30 p.m. Worship on Channel 3. Tuesday, Jan. 9: 9 a.m. Staff meeting; GLCW Executive Board meeting. 6:45 p.m. Ministry meetings. 8 p.m. PPC meeting. Wednesday, Jan. 10: 7 a.m. Men's Bible Study. 3:15 p.m. Faithweavers. 5:30 p.m. Youth Supper. 6 p.m. Woven Worship. 7 p.m. Grades 6-9 Confirmation; Chancel Choir rehearsal. Thursday, Jan. 11: 8:30 a.m. MIA.

Bethany Lutheran Church
720 N. Kniss Ave., Luverne
Ph. 507-283-4571 or 507-449-0291 or 605-215-9834
pastorapalmquist67@yahoo.com
Andrew Palmquist, Pastor
Sunday, Jan. 7: No Sunday School or Bible Class. 10:15 a.m. Worship. Monday, Jan. 8: ELS Pastors Meeting in Mankato. Wednesday, Jan. 10: 3:30 p.m. Catechism Class. Thursday, Jan. 11: 2 p.m. Ladies Aid.

American Reformed Church
304 N. Fairview Dr., Luverne
Ph. 283-8600; email: office@arcluverne.org
Mike Altena, Pastor

Thursday, Jan. 4: 5:30 p.m. Tumbling Tikes. 6 p.m. Ladies Night. Friday, Jan. 5: 6:30 a.m. Community Men's Bible Study. 4 p.m. REFIT Fitness Class. Sunday, Jan. 7: 9:30 a.m. Worship Service; ordination and installation of elders, deacons, care shepherds. 10:50 a.m. Family Education Hour. Noon Care Shepherd dinner. 7 p.m. Junior RCYF; Senior RCYF. Monday, Jan. 8: 7 p.m. Esther Circle. Tuesday, Jan. 9: 10 a.m. Staff meeting. 6:45 p.m. Bible Study Fellowship. 7 p.m. Consistory Meeting. Wednesday, Jan. 10: 4:30 p.m. REFIT Fitness. 5:30 p.m. Midweek meal. 6:30 p.m. Pioneer Clubs/YEL. 6:45 p.m. Rachel Circle; Stepping up. 7 p.m. Abide Praise Team. 8 p.m. Adult Choir; Girls Night. Thursday, Jan. 11: 5:30 p.m. Tumbling Tikes.

First Assembly of God Church
1075 110th Ave., 2 miles west of Luverne on County Rd. 4
Sundays: 9 a.m. Sunday School. 10 a.m. Morning Worship. 6:30 p.m. School of the Holy Spirit. Wednesdays: 7 p.m. Kids Connection; Men's Bible Study with Pastor Ken; Women's Bible Study with Pastor Gloria.

United Methodist Church
109 N. Freeman Ave., Luverne
Ph. 283-4529; email: luverneumc@iw.net
Dorie Hall, Pastor

Thursday, Jan. 4: 1-3 p.m. Rock County Food Shelf. Saturday, Jan. 6: 8 p.m. AA Meeting. Sunday, Jan. 7: 9 a.m. Traditional Service. 10 a.m. Coffee Hour and Adult Sunday School. 11 a.m. Come as You Are Service. 4:30 p.m. Genesis/Revelation Bible Study. 6 p.m. ALIVE Youth Group. Monday, Jan. 8: 8 p.m. AA Meeting. Tuesday, Jan. 9: 6:30 p.m. PPR Meeting. Wednesday, Jan. 10: 6:30 p.m. F.U.E.L. and Confirmation. 8 p.m. AA Meeting. Thursday, Jan. 11: 9 a.m.-1 p.m. LPEP. 1-3 p.m. Rock County Food Shelf. 7 p.m. Coloring Ministry.

First Presbyterian Church
302 Central Lane, Luverne
Ph. 283-4787; email: Firstpc@iw.net — www.fcpluverne.com
Sunday, Jan. 7: 10:15 a.m. Worship.

St. John Lutheran Church
803 N. Cedar St., Luverne
Ph. 283-2316, Dial-A-Devotion Ph. 283-4005
email: stjoh@iw.net — www.stjohnlutheranluverne.org
Gary Klatt, Pastor

Thursday, Jan. 4: 9 a.m. Little Lambs Devotions. 2 p.m. Women's Society. Saturday, Jan. 6: 5:30 p.m. Worship. Sunday, Jan. 7: 9 a.m. Worship. 10:15 a.m. Retirement Coffee; Christian Education Hour. 11:15 a.m. Junior Choir rehearsal. 4 p.m. Junior LYF. Monday, Jan. 8: 9 a.m. Circuit Pastors' Conference in Hardwick. 1:30 p.m. Communion at Brandon. 6 p.m. Anniversary Committee supper at Bluestem. 7:30 p.m. Men's Club. Tuesday, Jan. 9: 11:15 a.m. Staff Meeting. 1:15 p.m. Communion at Ellsworth. 2:30 p.m. Communion at Hills. 6 p.m. Mom's Night Out. 7 p.m. Missionary Guild. Wednesday, Jan. 10: 9 a.m. and 1 p.m. Little Lambs devotions. 9:30 a.m. Bible Study. 6 p.m. Youth supper. 6:30 p.m. Catechism. 7 p.m. KFC; High School Bible Study; Senior Choir. Thursday, Jan. 11: 9 a.m. Little Lambs Devotions. 10 a.m. DCE Meeting in Burnsville. 1:30 p.m. Communion at Mary Jane Brown Home. 2:15 p.m. Communion at Poplar Creek. 3:30 p.m. Communion at Veterans Home. 6:30 p.m. Chancel Guild Annual Meeting.

Living Rock Church
500 E. Main St., Luverne
Ph. 449-0057; www.livingrockswmn.org
Billy Skaggs, Pastor
Sundays: 10:30 a.m. Worship; Kids Rock Children's Ministry. 6 p.m. Youth Ministry. Life groups meet throughout the week.

New Life Celebration Church
110 N. Oakley, Luverne
Ph. 449-6522; email: newlifecelebration@gmail.com
Sundays: 9:30 a.m. Worship at 110 N. Oakley. Every third Thursday: 5 p.m. Food give-away at Senior Citizens Center. Bible Study groups meet at various times and days.

Zion Evangelical Lutheran Church
305 E. 2nd St., P.O. Box 36, Hardwick
Ph. 669-2855; email: www.zionlutheranhardwick.com
Thursday, Jan. 4: 3:30 p.m. Worship service on Channel 3. Friday, Jan. 5: 3:30 p.m. Worship service on Channel 3. Sunday, Jan. 7: 9 a.m. Sunday School and Adult Bible Study. 10 a.m. Mentor Program. 10:30 a.m. Worship Service with Communion; Installation of 2018 officers. Monday, Jan. 8: 9 a.m. Circuit Pastors Meeting at Zion. 1 p.m. Quilting. Tuesday, Jan. 9: 6:30 p.m. Board of Elders Meeting. 7:30 p.m. Church Council Meeting. Wednesday, Jan. 10: 6:30 p.m. Confirmation. Thursday, Jan. 11: Worship service on Channel 3.

Ben Clare United Methodist Church
26762 Ben Clare Ave., Valley Springs, S.D.
igtwb@WOW.net
Bill Bates, Pastor
Sundays: 9 a.m. Worship; 10 a.m. Fellowship; 10:30 a.m. Sunday School for all ages.

First Lutheran Church
300 Maple St., Valley Springs, S.D.
Ph. (605) 757-6662
Intern Pastor Laura Phillips
Sunday, Jan. 7: 9:30 a.m. Sunday School. 10:30 a.m. Worship with Communion. Wednesday, Jan. 10: 7 p.m. Confirmation

Palisade Lutheran Church
211 121st St., Garretson, S.D.
Ph. (507) 597-6257 — firstpalisade@alliancecom.net
Intern Pastor Laura Phillips
Thursday, Jan. 4: 7 p.m. Church Council meeting. Sunday, Jan. 7: 9 a.m. Worship with Communion. Wednesday, Jan. 10: 7 p.m. Confirmation at First Lutheran.

First Presbyterian Church
201 S. 3rd St., P.O. Box 73, Beaver Creek
Ph. 507-935-5025
Email: lori.firstpres@gmail.com
Worship Leader Michael Blank
Sundays: 9:30 a.m. Morning Worship. 10:30 a.m. Sunday School.

Hills United Reformed Church
410 S. Central Ave., Hills
Office Ph. 962-3254
hillsurc@alliancecom.net
Alan Camarigg, Pastor
Sundays: 9:30 a.m. and 6 p.m. Worship Services.

Treasure God's winter graces by reflecting, remembering

I remember Dad breaking ice in the stock tank to keep his cattle watered in the deep freeze of winter. He was so devoted to livestock. Eventually he got a heated water tank but sometimes that froze up when the temperature got really cold, like 25 to 30 below zero.

He'd get up at any hour to check the water. Like Mother Mary who "treasured and remembered" in the Gospel story of Jesus' birth, I always recall and remember Dad at the cattle tank in winter. I treasure the memory. It helps keep me devoted and focused on what's important.

I also remember Mom getting up at all hours of the night to check on the baby chickens in late winter and early spring to make sure they didn't bunch up in a corner and smother. She'd make sure the heat lamps kept working so that the chicks would survive a chilly night. Both Mom and Dad gave me lots of things "to treasure and remember."

Christmas vacation was a good time for me because I would spend hours doing farm chores with my folks. My two

BUILT ON A ROCK

By Father Tom Jennings, St. Catherine Church, Luverne

younger brothers were part of the chores, too. It's what I like most about Christmas: remembering and treasuring just like Mother Mary at Bethlehem and Nazareth. Doing this is good for mental health and for emotional and spiritual stability.

Remembering the wondrous deeds of the Lord and treasuring in the heart all the experiences that keep one growing and maturing — it's part of winter reminiscing when the cold air slows us down and opens opportunity to think and reflect. Some of my best thinking happens in winter's long nights when the stars shine brightly and the moon's light shines off the snowy landscape.

Do this: use winter's time to reflect and remember; treasure God's winter graces.

Magnolia United Methodist Church
501 E. Luverne St., Magnolia
Church Ph. 507-483-2492; cell 227-7821; email: adrmagumc@gmail.com

www.facebook.com/adrianmagnoliaumc
Kristi Franken, Pastor
Sunday, Jan. 7: 9 a.m. Magnolia Worship Service. Wednesdays: 6:30 p.m. Confirmation at Magnolia UMC.

Steen Reformed Church
112 W. Church Ave., Steen
Ph. 855-2336
Jeremy Wiersema, Pastor

Sundays: 9:30 a.m. Worship; service broadcast on KQAD. 10:45 a.m. Sunday School. 6 p.m. Youth Group. Evening worship at 6 p.m. first and third Sundays. Wednesdays: 7 p.m. Midweek.

Bethlehem Lutheran Church
Pastor Maggie Berndt-Dreyer
112 N. Main St., Hills
Ph. 962-3270
e-mail: bethlehemluth@alliancecom.net

Sunday, Jan. 7: 9 a.m. Communion at Tuff Chapel. 9:30 a.m. Sunday School. 10:30 a.m. Communion at Bethlehem. Tuesday, Jan. 9: 2:30 p.m. Bible Study at Tuff Home. 3:15 p.m. Bible Study at Village. Wednesday, Jan. 10: 9 a.m. Quilting. 7 p.m. Board Meeting. 8 p.m. Council Meeting.

These Weekly Church Page Messages are contributed to God's Work through the Church and by these concerned and responsible citizens & businesses:

Call Rick or Chantel to place your ad!
283-2333

Tuff Memorial Home, Retirement Apartments & Tuff Village
"A Home Where Residents SMILE"
Hills, Minnesota
Phone 507-962-3275

Papik Motors
LUVERNE, MINN.
I-90 in Luverne, MN
507-283-9171 • 1-800-634-7701

Read us online!
Rock County STAR HERALD
www.Star-Herald.com

Trust In Him

Pizza Ranch
110 E. Main, Luverne, MN
Phone 507-283-2379

MANLEY TIRE & OIL SERVICE
Manley Minnesota
1-800-615-3704
Open six days a week - Closed on Sundays
To God be the Glory.

CWG Business Insurance.
Tri-State Region *Period!*

Rock County STAR HERALD
Luverne, MN • 507-283-2333

Advertise Here

Luverne ANNOUNCER

To Advertise Call 283-2333

Buffalo Ridge INSURANCE
507-283-2381 www.buffaloridgeins.com E-mail: info@buffaloridgeins.com

McClure Electric
Alan M. Aanenson, owner
Farm, Home & Commercial Wiring
Luverne, MN Phone 507-283-4716

First Farmers & Merchants
303 E. Main, Luverne, MN
507-283-4463 www.frbank.com
We believe in you.™ Member FDIC. And the community.

HILLS STAINLESS STEEL & EQUIPMENT CO., INC.
506 W. Koehn, P.O. Box 987, Luverne, MN
PHONE 507-283-4405
Church is Important - Please Attend!

MINNWEST BANK
• 116 E. Main St., Luverne 507-283-2366
• S. Hwy. 75, Luverne 507-283-9131
• Main St., Beaver Creek 507-673-2333
Member FDIC www.minnwestbank.com

HARTQUIST
Funeral and Creation Services
- ENGBRETTSON CHAPEL -
507-283-2777
www.HartquistFuneral.com
"Let our family help your family"
Serving the Luverne and Surrounding Communities

Tollefson Publishing
117 W. Main
Luverne, MN 56156
507-283-2333

Mortgage foreclosure sale set for Jan. 11

NOTICE OF MORTGAGE FORECLOSURE SALE

Minnesota Uniform Conveyancing Blanks

Minn. Stat. 580.025, 580.04 Form 60.2.1 (2009)

THE RIGHT TO VERIFICATION OF THE DEBT AND IDENTIFICATION OF THE ORIGINAL CREDITOR WITHIN THE TIME PROVIDED BY LAW IS NOT AFFECTED BY THIS ACTION.

DATE: November 20, 2017.

YOU ARE NOTIFIED that default has occurred in the conditions of the following described Mortgage:

INFORMATION REGARDING MORTGAGE TO BE FORECLOSED
1. Date of Mortgage: July 30, 2014.
2. Mortgagors: Randy Perkins and Stefanie L. Sanden, husband and wife
3. Mortgagee: Minnwest Bank Luverne
4. Recording Information: Recorded on August 11, 2014, as Document Number 184410, in the Office of the County Recorder of Rock County, Minnesota.
5. Assignments of Mortgage, if any: None.
INFORMATION REGARDING MORTGAGED PREMISES
6. Tax parcel identification number of the mortgaged premises: 20-0887-000
7. Legal description of the mortgaged premises:
Lot Nine (9) in Block Five (5) in Kniss Park Addition to the Village (now city) of Luverne, Minnesota.

Check here if all or part of the described real property is Registered (Torrens)
8. The physical street address, city, and zip code of the mortgaged premises: 615 Lincoln Street West, Luverne, Minnesota 56156.

OTHER FORECLOSURE DATA

9. The person holding the Mortgage:
 is a transaction agent as defined by Minn. Stat. 58.02, subd. 30.
The name(s) of the transaction agent, residential mortgage servicer, and the lender or broker, as defined in Minn. Stat. 58.02 is/are ___ Not applicable _____.
The transaction agent's mortgage identification number, if stated on the Mortgage, is ___ Not applicable _____.
 is not a transaction agent, as defined by Minn. Stat. 58.02, subd. 30.
The name(s) of the residential mortgage servicer and the lender or broker, as defined in Minn. Stat. 58.02, is Minnwest Bank Luverne.
10. If stated on the Mortgage, the name of the mortgage originator, as defined in Minn. Stat. 58.02, is not applicable.

INFORMATION REGARDING FORECLOSURE

11. The requisites of Minn. Stat. 580.02 have been satisfied.
12. The original principal amount secured by the Mortgage was \$44,100.00.
13. At the date of this notice the amount due on the Mortgage, including taxes, if any, paid by the holder of the Mortgage, is: \$42,912.21.
14. Pursuant to the power of sale in the Mortgage, the Mortgage will be foreclosed, and the mortgaged premises will be sold by the Sheriff of Rock County, Minnesota, at public auction on January 11, 2018 at 10:00 a.m., at the Rock County Sheriff's Office at 1000 North Blue Mound Avenue, Luverne, Minnesota 56156.

15. The time allowed by law for redemption by Mortgagor or Mortgagor's personal representatives or assigns is six (6) months after the date of sale.

16. Minn. Stat. 580.04(b) provides, "If the real estate is an owner-occupied, single-family dwelling, the notice must also specify the date on or before which the mortgagor must vacate the property if the mortgage is not reinstated under section 580.30 or the property redeemed under section 580.23." If this statute applies, the time to vacate the property is 11:59 p.m. on July 11, 2018.

THE TIME ALLOWED BY LAW FOR REDEMPTION BY THE MORTGAGOR, THE MORTGAGOR'S PERSONAL REPRESENTATIVES OR ASSIGNS, MAY BE REDUCED TO FIVE WEEKS IF A JUDICIAL ORDER IS ENTERED UNDER MINNESOTA STATUTES, SECTION 582.032, DETERMINING, AMONG OTHER THINGS, THAT THE MORTGAGED PREMISES ARE IMPROVED WITH A RESIDENTIAL DWELLING OF LESS THAN FIVE UNITS, ARE NOT PROPERTY USED IN AGRICULTURAL PRODUCTION, AND ARE ABANDONED.

THIS COMMUNICATION IS FROM A DEBT COLLECTOR ATTEMPTING TO COLLECT A DEBT. ANY INFORMATION WILL BE USED FOR THIS PURPOSE.

Name and address of Attorney for Mortgagee or Mortgage Assignee: _____ Name of Mortgagee or Mortgage Assignee: MINNWEST BANK LUVERNE

/s/ Greg J. Bucher
Greg J. Bucher
STONEBERG, GILES & STROUP, P.A.
300 South O'Connell Street
Marshall, MN 56258
Telephone: (507) 537-0591
Attorney Reg. No: 299601

(11-30, 12-07, 12-14, 12-21, 12-28, 01-04)

Mortgage foreclosure sale set for Jan. 11

NOTICE OF MORTGAGE FORECLOSURE SALE

Minnesota Uniform Conveyancing Blanks

Minn. Stat. 580.025, 580.04 Form 60.2.1 (2009)

THE RIGHT TO VERIFICATION OF THE DEBT AND IDENTIFICATION OF THE ORIGINAL CREDITOR WITHIN THE TIME PROVIDED BY LAW IS NOT AFFECTED BY THIS ACTION.

DATE: November 20, 2017.

YOU ARE NOTIFIED that default has occurred in the conditions of the following described Mortgage:

INFORMATION REGARDING MORTGAGE TO BE FORECLOSED
1. Date of Mortgage: March 9, 2012.
2. Mortgagors: Randy W. Perkins
3. Mortgagee: Minnwest Bank Luverne
4. Recording Information: Recorded on March 21, 2012, as Document Number 178851, in the Office of the County Recorder of Rock County, Minnesota.
5. Assignments of Mortgage, if any: None.
INFORMATION REGARDING MORTGAGED PREMISES
6. Tax parcel identification number of the mortgaged premises: 20-1650-000
7. Legal description of the mortgaged premises:
Lots Thirteen (13) and Fourteen (14) in Block Twelve (12) in Warren and Kniss' Addition to the Village (now City) of Luverne, Minnesota, subject to easements of record, if any.
Check here if all or part of the described real property is Registered (Torrens)

8. The physical street address, city, and zip code of the mortgaged premises: 202 West Main Street, Luverne, Minnesota 56156.

OTHER FORECLOSURE DATA

9. The person holding the Mortgage:
 is a transaction agent as defined by Minn. Stat. 58.02, subd. 30.
The name(s) of the transaction agent, residential mortgage servicer, and the lender or broker, as defined in Minn. Stat. 58.02 is/are ___ Not applicable _____.
The transaction agent's mortgage identification number, if stated on the Mortgage, is ___ Not applicable _____.
 is not a transaction agent, as defined by Minn. Stat. 58.02, subd. 30.
The name(s) of the residential mortgage servicer and the lender or broker, as defined in Minn. Stat. 58.02, is Minnwest Bank Luverne.
10. If stated on the Mortgage, the name of the mortgage originator, as defined in Minn. Stat. 58.02, is not applicable.

INFORMATION REGARDING FORECLOSURE

11. The requisites of Minn. Stat. 580.02 have been satisfied.
12. The original principal amount secured by the Mortgage was \$64,000.00.
13. At the date of this notice the amount due on the Mortgage, including taxes, if any, paid by the holder of the Mortgage, is: \$57,070.63.
14. Pursuant to the power of sale in the Mortgage, the Mortgage will be foreclosed, and the mortgaged premises will be sold by the Sheriff of Rock County, Minnesota, at public auction on January 11, 2018 at 10:00 a.m., at the Rock County Sheriff's Office at 1000 North Blue Mound Avenue, Luverne, Minnesota 56156.

15. The time allowed by law for redemption by Mortgagor or Mortgagor's personal representatives or assigns is six (6) months after the date of sale.

16. Minn. Stat. 580.04(b) provides, "If the real estate is an owner-occupied, single-family dwelling, the notice must also specify the date on or before which the mortgagor must vacate the property if the mortgage is not reinstated under section 580.30 or the property redeemed under section 580.23." If this statute applies, the time to vacate the property is 11:59 p.m. on July 11, 2018.

THE TIME ALLOWED BY LAW FOR REDEMPTION BY THE MORTGAGOR, THE MORTGAGOR'S PERSONAL REPRESENTATIVES OR ASSIGNS, MAY BE REDUCED TO FIVE WEEKS IF A JUDICIAL ORDER IS ENTERED UNDER MINNESOTA STATUTES, SECTION 582.032, DETERMINING, AMONG OTHER THINGS, THAT THE MORTGAGED PREMISES ARE IMPROVED WITH A RESIDENTIAL DWELLING OF LESS THAN FIVE UNITS, ARE NOT PROPERTY USED IN AGRICULTURAL PRODUCTION, AND ARE ABANDONED.

THIS COMMUNICATION IS FROM A DEBT COLLECTOR ATTEMPTING TO COLLECT A DEBT. ANY INFORMATION WILL BE USED FOR THIS PURPOSE.

Name and address of Attorney for Mortgagee or Mortgage Assignee: _____ Name of Mortgagee or Mortgage Assignee: MINNWEST BANK LUVERNE

/s/ Greg J. Bucher
Greg J. Bucher
STONEBERG, GILES & STROUP, P.A.
300 South O'Connell Street
Marshall, MN 56258
Telephone: (507) 537-0591
Attorney Reg. No: 299601

(11-30, 12-07, 12-14, 12-21, 12-28, 01-04)

Mortgage foreclosure sale set for Jan. 18

NOTICE OF MORTGAGE FORECLOSURE SALE

THE RIGHT TO VERIFICATION OF THE DEBT AND IDENTITY OF THE ORIGINAL CREDITOR WITHIN THE TIME PROVIDED BY LAW IS NOT AFFECTED BY THIS ACTION.

NOTICE IS HEREBY GIVEN, that default has occurred in conditions of the following described mortgage:

DATE OF MORTGAGE: January 24, 2012
MORTGAGOR: Kerry B. Fink, an unmarried man and Tiffany A. Wilson, an unmarried woman.

MORTGAGEE: First Farmers & Merchants National Bank.
DATE AND PLACE OF RECORDING: Recorded January 26, 2012 Rock County Recorder, Document No. 178453.

ASSIGNMENTS OF MORTGAGE: Assigned to: JPMorgan Chase Bank, National Association. Dated January 24, 2012 Recorded January 26, 2012, as Document No. 178454.

TRANSACTION AGENT: NONE
TRANSACTION AGENT'S MORTGAGE IDENTIFICATION NUMBER ON MORTGAGE: NONE
LENDER OR BROKER AND MORTGAGE ORIGINATOR STATED ON MORTGAGE: First Farmers & Merchants National Bank

RESIDENTIAL MORTGAGE SERVICER: JPMorgan Chase Bank, National Association

MORTGAGED PROPERTY ADDRESS: 1402 85th Street, Luverne, MN 56156
TAX PARCEL I.D. #: 06-0164-100
LEGAL DESCRIPTION OF PROPERTY:

A tract of land beginning at the Northwest corner of the SW 1/4 of Section 25, Township 102 North, of Range 45 West, of the 5th P.M., thence South on the West line of said Section 46 feet to the point of beginning; thence due South on the Section line 1254 feet; thence due East 198 feet; thence in a Northeasterly direction 297 feet to a point 382.8 feet East and 970.2 feet South of the Northwest corner of said SW 1/4; thence in an Easterly direction 66 feet to a point 455.4 feet East and 937.2 feet South of the Northwest corner of said SW 1/4; thence in a Northwesterly direction 897.6 feet to a point 46 feet East and 202.4 feet South of the Northwest corner of said SW 1/4; thence in a Northwesterly direction 132 feet to a point 30 feet due East of the point beginning; thence due West 30 feet to the point of beginning, and an easement in perpetuity for ingress and egress to use the existing driveway serving said property.

COUNTY IN WHICH PROPERTY IS LOCATED: Rock
ORIGINAL PRINCIPAL AMOUNT OF MORTGAGE: \$90,000.00
AMOUNT DUE AND CLAIMED TO BE DUE AS OF DATE OF NOTICE, INCLUDING TAXES, IF ANY, PAID BY MORTGAGEE: \$84,751.35

That prior to the commencement of this mortgage foreclosure proceeding Mortgagee/Assignee of Mortgagee complied with all notice requirements as required by statute; That no action or proceeding has been instituted at law or otherwise to recover the debt secured by said mortgage, or any part thereof;

PURSUANT to the power of sale contained in said mortgage, the above described property will be sold by the Sheriff of said county as follows:

DATE AND TIME OF SALE: January 18, 2018 at 10:00 AM
PLACE OF SALE: Sheriff's Office, Main Entrance, Law Enforcement Center, 1000 North Blue Mound Avenue, Luverne, MN

to pay the debt then secured by said Mortgage, and taxes, if any, on said premises, and the costs and disbursements, including attorneys' fees allowed by law subject to redemption within six (6) months from the date of said sale by the mortgagor(s), their personal representatives or assigns unless reduced to Five (5) weeks under MN Stat. §580.07.

TIME AND DATE TO VACATE PROPERTY: If the real estate is an owner-occupied, single-family dwelling, unless otherwise provided by law, the date on or before which the mortgagor(s) must vacate the property if the mortgage is not reinstated under section 580.30 or the property is not redeemed under section 580.23 is 11:59 p.m. on July 18, 2018, unless that date falls on a weekend or legal holiday, in which case it is the next weekday, and unless the redemption period is reduced to 5 weeks under MN Stat. Secs. 580.07 or 582.032.

MORTGAGOR(S) RELEASED FROM FINANCIAL OBLIGATION ON MORTGAGE: None
"THE TIME ALLOWED BY LAW FOR REDEMPTION BY THE MORTGAGOR, THE MORTGAGOR'S PERSONAL REPRESENTATIVES OR ASSIGNS, MAY BE REDUCED TO FIVE WEEKS IF A JUDICIAL ORDER IS ENTERED UNDER MINNESOTA STATUTES, SECTION 582.032, DETERMINING, AMONG OTHER THINGS, THAT THE MORTGAGED PREMISES ARE IMPROVED WITH A RESIDENTIAL DWELLING OF LESS THAN FIVE UNITS, ARE NOT PROPERTY USED IN AGRICULTURAL PRODUCTION, AND ARE ABANDONED."

JPMorgan Chase Bank, National Association
Mortgagee/Assignee of Mortgagee

USSET, WEINGARDEN AND LIEBO, P.L.L.P.
Attorneys for Mortgagee/Assignee of Mortgagee
4500 Park Glen Road #300
Minneapolis, MN 55416
(952) 925-6888
30 - 17-007329 FC
THIS IS A COMMUNICATION FROM A DEBT COLLECTOR.

(11-30, 12-07, 12-14, 12-21, 12-28, 01-04)

Mortgage foreclosure sale set for Feb. 1

NOTICE OF MORTGAGE FORECLOSURE SALE

THE RIGHT TO VERIFICATION OF THE DEBT AND IDENTIFICATION OF THE ORIGINAL CREDITOR WITHIN THE TIME PROVIDED BY LAW IS NOT AFFECTED BY THIS ACTION.

DATE: November 21, 2017.

Default has occurred in the conditions of the following described Mortgage:

DATE OF MORTGAGE: June 5, 2015
ORIGINAL PRINCIPAL AMOUNT OF MORTGAGE: \$51,000.00
MORTGAGOR(S): Kevin R. Pater, a single person
MORTGAGEE: Exchange State Bank

DATE AND PLACE OF FILING: June 8, 2015 at Office of Land Records
Rock County, Minnesota

ASSIGNMENTS OF MORTGAGE: NONE
LEGAL DESCRIPTION OF PROPERTY:
The East Eight Hundred Ten and Four Tents (E. 810.4) feet of the North Four Hundred Thirty (N. 430) feet of the South Half of the Northeast Quarter (S 1/2 of NE

1/4) of Section Five (5), Township One Hundred Four (104) North, Range Forty-four (44) West of the 5th P.M., Rock County, Minnesota

EXCEPT
Tract 2 in the E. 810.4' of the N. 430' of the S 1/2 - NE 1/4 Section 5-104-44

That part of the East 810.4 Feet of the North 430 Feet of the South Half of the Northeast Quarter (E. 810.4' - N. 430' - S 1/2 - NE 1/4) of Section Five (5), Township 104 North, Range 44 West of the 5th P.M., Rock County, Minnesota, Described as Follows:

Commencing at the East Quarter Corner of Said Section 5; Thence North 00°29'28" West on the East Line of Said NE 1/4 for a Distance of 894.43 Feet to the Southeast Corner of said E. 810.4' - N. 430' - S 1/2 - NE 1/4 and to the point of Beginning; Thence Continuing North 00°29'28" West on East Line for a Distance of 53.29 Feet; Thence North 88°16'07" West a Distance of 332.71 Feet; Thence North 00°58'06" East for a Distance of 372.70 Feet to the North Line of Said E. 810.4' - N. 430' - S 1/2 - NE 1/4; Thence North 88°57'47" West on Said North Line for a Distance of 487.61 Feet to the Northwest Corner of Said E. 810.4' - N. 430' - S 1/2 - NE 1/4; Thence South 00°29'28" East on the West Line of Said E. 810.4' - N. 430' - S 1/2 - NE 1/4 for a Distance of 430.15 Feet to the Southwest Corner of Said E. 810.4' - N. 430' - S 1/2 - NE 1/4; Thence South 88°57'47" East on the South Line of Said E. 810.4' - N. 430' - S 1/2 - NE 1/4 for a Distance of 810.69 Feet to the point of Beginning, Containing 5.18 Acres, Inclusive of 0.04 Acres of Public Road Right-of-Way on the East Side Thereof.

Subject to Easements, if any, of Record or Apparent.
COUNTY IN WHICH PROPERTY IS LOCATED: Rock

THE AMOUNT CLAIMED TO BE DUE ON THE MORTGAGE ON THE DATE OF THE NOTICE: \$34,140.67.

THAT no action or proceeding has been instituted at law to recover the debt secured by said mortgage, or any part thereof; that there has been compliance with all pre-foreclosure notice and acceleration requirements of said mortgage, and/or applicable statutes;

PURSUANT to the power of sale contained in said mortgage, the above described property will be sold by the Sheriff of Rock County as follows:

DATE AND TIME OF SALE: February 1, 2018 at 10:00 A.M.
PLACE OF SALE: Rock County Sheriff's Office, 1000 North Blue Mound Avenue, Luverne, MN 56156

to pay the debt then secured by said mortgage and taxes, if any actually paid by the mortgagee, on the premises and the costs and disbursements allowed by law. The time allowed by law for redemption by said mortgagors, their personal representatives or assigns is six (6) months for the date of sale.

THE TIME ALLOWED BY LAW FOR REDEMPTION BY THE MORTGAGOR(S), THE MORTGAGOR(S) PERSONAL REPRESENTATIVES OR ASSIGNS MAY BE REDUCED TO FIVE WEEKS IF A JUDICIAL ORDER IS ENTERED UNDER MINNESOTA STATUTES, SECTION 582.032, DETERMINING, AMONG OTHER THINGS, THAT THE MORTGAGED PREMISES ARE IMPROVED WITH A RESIDENTIAL DWELLING OF LESS THAN FIVE UNITS, ARE NOT PROPERTY USED IN AGRICULTURAL PRODUCTION, AND ARE ABANDONED.

By: /s/ Katherine A. Morgan
Katherine A. Morgan
Bonander Law, PC
430 Holder Street
PO Box 186
Larchwood, IA 51241
Ph. (712) 477-2902

NOTICE OF MORTGAGE FORECLOSURE SALE FORECLOSURE DATA

- (1) Street Address, City and Zip Code of mortgaged premises: 2477 170th Avenue, Edgerton, Minnesota 56128
- (2) Transaction agent; residential mortgage servicer; and lender or broker: Exchange State Bank
- (3) Tax parcel identification number: 01-0020-000
- (4) Transaction Agent's mortgage ID number (MERS number): NMLS#653978
- (5) Name of mortgage originator: Exchange State Bank

(11-30, 12-7, 12-14, 12-21, 12-28, 1-4)

Mortgage foreclosure sale set for Feb. 22

NOTICE OF MORTGAGE FORECLOSURE SALE

THE RIGHT TO VERIFICATION OF THE DEBT AND IDENTITY OF THE ORIGINAL CREDITOR WITHIN THE TIME PROVIDED BY LAW IS NOT AFFECTED BY THIS ACTION.

NOTICE IS HEREBY GIVEN, that default has occurred in conditions of the following described mortgage:

DATE OF MORTGAGE: December 15, 2010
MORTGAGOR: Chad M. Gruis, single.
MORTGAGEE: First Farmers & Merchants National Bank.

DATE AND PLACE OF RECORDING: Recorded December 16, 2010 Rock County Recorder, Document No. 175211.

ASSIGNMENTS OF MORTGAGE: Assigned to: JPMorgan Chase Bank, National Association. Dated December 15, 2010 Recorded December 16, 2010, as Document No. 175212.

TRANSACTION AGENT: NONE
TRANSACTION AGENT'S MORTGAGE IDENTIFICATION NUMBER ON MORTGAGE: NONE
LENDER OR BROKER AND MORTGAGE ORIGINATOR STATED ON MORTGAGE: First Farmers & Merchants National Bank

RESIDENTIAL MORTGAGE SERVICER: JPMorgan Chase Bank, National Association

MORTGAGED PROPERTY ADDRESS: 811 North Spring Street, Luverne, MN 56156

TAX PARCEL I.D. #: 200286000
LEGAL DESCRIPTION OF PROPERTY:
The S. 7 feet of Lot 2 and the N. 65 feet of Lot 4 in Block 6 in Barck, Adams & Howe's Addition to the Village (now City) of Luverne, Rock County, Minnesota.

COUNTY IN WHICH PROPERTY IS LOCATED: Rock
ORIGINAL PRINCIPAL AMOUNT OF MORTGAGE: \$78,963.00
AMOUNT DUE AND CLAIMED TO BE DUE AS OF DATE OF NOTICE, INCLUDING TAXES, IF ANY, PAID BY MORTGAGEE: \$70,718.67

That prior to the commencement of this mortgage foreclosure proceeding Mortgagee/Assignee of Mortgagee complied with all notice requirements as required by statute; That no action or proceeding has been instituted at law or otherwise to recover the debt secured by said mortgage, or any part thereof;

PURSUANT to the power of sale contained in said mortgage, the above described property will be sold by the Sheriff of said county as follows:

DATE AND TIME OF SALE: February 22, 2018 at 10:00 AM
PLACE OF SALE: Sheriff's Office, Main Entrance, Law Enforcement Center, 1000 North Blue Mound Avenue, Luverne, MN

to pay the debt then secured by said Mortgage, and taxes, if any, on said premises, and the costs and disbursements, including attorneys' fees allowed by law subject to redemption within six (6) months from the date of said sale by the mortgagor(s), their personal representatives or assigns unless reduced to Five (5) weeks under MN Stat. §580.07.

TIME AND DATE TO VACATE PROPERTY: If the real estate is an owner-occupied, single-family dwelling, unless otherwise provided by law, the date on or before which the mortgagor(s) must vacate the property if the mortgage is not reinstated under section 580.30 or the property is not redeemed under section 580.23 is 11:59 p.m. on August 22, 2018, unless that date falls on a weekend or legal holiday, in which case it is the next weekday, and unless the redemption period is reduced to 5 weeks under MN Stat. Secs. 580.07 or 582.032.

MORTGAGOR(S) RELEASED FROM FINANCIAL OBLIGATION ON MORTGAGE: None
"THE TIME ALLOWED BY LAW FOR REDEMPTION BY THE MORTGAGOR, THE MORTGAGOR'S PERSONAL REPRESENTATIVES OR ASSIGNS, MAY BE REDUCED TO FIVE WEEKS IF A JUDICIAL ORDER IS ENTERED UNDER MINNESOTA STATUTES, SECTION 582.032, DETERMINING, AMONG OTHER THINGS, THAT THE MORTGAGED PREMISES ARE IMPROVED WITH A RESIDENTIAL DWELLING OF LESS THAN FIVE UNITS, ARE NOT PROPERTY USED IN AGRICULTURAL PRODUCTION, AND ARE ABANDONED."

Dated: December 19, 2017
JPMorgan Chase Bank, National Association
Mortgagee/Assignee of Mortgagee

...continued on next page

Star Herald PUBLIC NOTICES

Star Herald CLASSIFIEDS

...continued from previous page

USSET, WEINGARDEN AND LIEBO, P.L.L.P.
Attorneys for Mortgagee/Assignee of Mortgagee
4500 Park Glen Road #300
Minneapolis, MN 55416
(952) 925-6888
30 - 17-007740 FC

THIS IS A COMMUNICATION FROM A DEBT COLLECTOR.
(1-04, 1-11, 1-18, 1-25, 2-1, 2-8)

Mortgage foreclosure sale set for Feb. 22

NOTICE OF MORTGAGE FORECLOSURE SALE

NOTICE IS HEREBY GIVEN that default has occurred in the conditions of the following described mortgage:

DATE OF MORTGAGE: October 09, 2012
ORIGINAL PRINCIPAL AMOUNT OF MORTGAGE: \$107,257.00
MORTGAGOR(S): Jason Wicks and Shelley Wicks, Husband and Wife
MORTGAGEE: Mortgage Electronic Registration Systems, Inc., as assignee for Premier Home Mortgage, Inc., its successors and/or assigns

DATE AND PLACE OF RECORDING:
Recorded: October 11, 2012 Rock County Recorder
Document Number: 180397

LOAN MODIFICATION:
Dated: November 20, 2015
Recorded: December 14, 2015
Document Number: 187494

LOAN MODIFICATION:
Dated: November 20, 2015
Recorded: June 27, 2016
Document Number: 188640

ASSIGNMENTS OF MORTGAGE:
And assigned to: First Guaranty Mortgage Corporation
Dated: July 31, 2015
Recorded: August 10, 2015 Rock County Recorder
Document Number: 186773

Transaction Agent: Mortgage Electronic Registration Systems, Inc.
Transaction Agent Mortgage Identification Number: 100966251208200245
Lender or Broker: Premier Home Mortgage, Inc.
Residential Mortgage Servicer: RoundPoint Mortgage Servicing Corporation
Mortgage Originator: Not Applicable

COUNTY IN WHICH PROPERTY IS LOCATED: Rock
Property Address: 404 N Estey St, Luverne, MN 56156-1464
Tax Parcel ID Number: 20-1731-000

LEGAL DESCRIPTION OF PROPERTY: The W.90 feet of the S.77 feet of Lot 3 in Block 21 in Warren and Kniss' Second Addition to the City of Luverne, Rock County, Minnesota

AMOUNT DUE AND CLAIMED TO BE DUE AS OF DATE OF NOTICE: \$114,407.01 THAT all pre-foreclosure requirements have been complied with; that no action or proceeding has been instituted at law or otherwise to recover the debt secured by said mortgage, or any part thereof;

PURSUANT to the power of sale contained in said mortgage, the above-described property will be sold by the Sheriff of said county as follows:

DATE AND TIME OF SALE: February 22, 2018 at 10:00 AM
PLACE OF SALE: Law Enforcement Center, Lobby, 1000 N. Blue Mound Ave., Luverne, Minnesota

to pay the debt secured by said mortgage and taxes, if any, on said premises and the costs and disbursements, including attorney fees allowed by law, subject to redemption within six (6) months from the date of said sale by the mortgagor(s), their personal representatives or assigns.

If the Mortgage is not reinstated under Minn. Stat. §580.30 or the property is not redeemed under Minn. Stat. §580.23, the Mortgagor must vacate the property on or before 11:59 p.m. on August 22, 2018, or the next business day if August 22, 2018 falls on a Saturday, Sunday or legal holiday.

Mortgagor(s) released from financial obligation: NONE

THIS COMMUNICATION IS FROM A DEBT COLLECTOR ATTEMPTING TO COLLECT A DEBT. ANY INFORMATION OBTAINED WILL BE USED FOR THAT PURPOSE. THE RIGHT TO VERIFICATION OF THE DEBT AND IDENTITY OF THE ORIGINAL CREDITOR WITHIN THE TIME PROVIDED BY LAW IS NOT AFFECTED BY THIS ACTION.

THE TIME ALLOWED BY LAW FOR REDEMPTION BY THE MORTGAGOR, THE MORTGAGOR'S PERSONAL REPRESENTATIVES OR ASSIGNS, MAY BE REDUCED TO FIVE WEEKS IF A JUDICIAL ORDER IS ENTERED UNDER MINNESOTA STATUTES, SECTION 582.032, DETERMINING, AMONG OTHER THINGS, THAT THE MORTGAGED PREMISES ARE IMPROVED WITH A RESIDENTIAL DWELLING OF LESS THAN FIVE UNITS, ARE NOT PROPERTY USED IN AGRICULTURAL PRODUCTION, AND ARE ABANDONED.

DATED: December 27, 2017
ASSIGNEE OF MORTGAGEE: First Guaranty Mortgage Corporation
Wilford, Geske & Cook P.A.
Attorneys for Assignee of Mortgagee
7616 Currell Blvd Ste 200
Woodbury, MN 55125-2296
(651) 209-3300
File Number: 033794F03

(1-04, 1-11, 1-18, 1-25, 2-1, 2-8)

EMPLOYMENT

Drivers: LOCAL part-time hiker/vehicle transporter opening in Sioux Falls. Excellent hourly pay! Great for CDL Class A or B drivers with 2yrs experience seeking supplemental income. Penske Truck Leasing: 855-516-7827 (12.28-1.14)

Office Help Wanted: Loosbrock Digging Service, Inc., located in Lismore, MN, is currently seeking a Secretary/Bookkeeper to help with various office functions. Experience with Microsoft Office applications and QuickBooks is a plus. Hourly wage will be determined based on experience. If interested in the position, please send resume to: ldsinc@lismoretele.com. We offer Health Insurance and 401(k) benefits. (12.17-1.4)

RN/LPN: Parkview Manor is looking for a full-time RN/LPN! Benefits include health insurance, dental insurance, paid time off, Public Employee Retirement, and holiday pay! Wages are based on experience level. If interested, contact Darnell Krull at (507) 967-2388 or Sam Quam at (507) 967-2482. (tc)

Dietary Aide: Parkview Manor is looking for a part-time Dietary Aide for our afternoon shift. This is a great job for students! If interested, contact Sam or Arlys at (507) 967-2482. (tc)

FOR SALE

Men's black leather coat size large/tall \$50.00, Air Force Parka size large \$40.00, Sony 32" TV with stand \$25.00. Phone 507-215-5525 (1.4-1.21)

CARDS OF THANKS

The family of Marvin Doering wishes to thank everyone in this difficult time of Marvin's passing. Remembering with a card, memorial, flowers, attendance at his visitation/funeral or keeping us in your prayers - your kindness has touched our hearts. Thank you to everyone for their help with the funeral service and to the wonderful ladies that served the lunch. We wish to especially thank Hartquist Funeral Home for all of their amazing help and support. Thank you to Koehn Funeral Home for their help at the cemetery back in South Dakota. Thank you all for the calls, visits and comforting words to Marvin especially in the last 6 months when his health declined. We hope you know how much it all meant to Marv and us and how much you touched his life. As Marv would say "God loves you and so do we." (12.31-1.4)

Our family would like to express our appreciation of all your kindness during De's long journey to heaven. Your thoughtfulness of food, cards and gifts were greatly appreciated. We cherish the doctors, nurses, church, Hospice staff, and all who came to visit him in Hospice! Del had nothing but good to say about his last months in Hospice and was greatly appreciative of his nurses and staff. We'll always remember his smile and kindness and his willingness to help anyone.
Eileen Domagala and families (1.4-1.7)

ADVERTISE TODAY!
with the
Star Herald
Call Rick or Chantel
507-283-2333

EMPLOYMENT

CNA: Parkview Manor is looking for CNAs! Benefits include health insurance, PERA retirement plan, holiday pay, and a \$2,000 scholarship available for students! We will provide training or pay for experience. Wages are based on experience level. If interested, contact Darnell Krull at (507) 967-2388 or Sam Quam at (507) 967-2482. (tc)

Fun and rewarding summer job that looks great on your resume and jobs after retirement! Applications are being accepted for seasonal summer employment at: Palisades State Park (Garretson) and Big Sioux Rec. Area (Brandon). Campground attendant, security, supervisor, education program coordinator, maintenance crew leader, and law enforcement. Crew Leader position will work from April 1 through October 31. Education to implement and lead our summer park programs. Application deadline 2/16/2018. Must be at least 17 years old by date of hire. Salaries from \$9.80-17.00/hour. Information and applications can be found online at: <https://bhr.sd.gov/workforus/gfp.aspx>. Questions can be answered at: Palisades and Big Sioux - 605-594-3824 EOE (1.4-2.11)

JOIN THE KUM & GO TEAM!

NOW HIRING:

ALL SHIFTS,
ALL POSITIONS
FOR ADRIAN,
MN STORES!
APPLY TODAY!



Competitive Wages,
Great Benefit Packages and
Growth Opportunities

Apply Online Today at
www.kumandgo.com

SERVICES

HELP ME!

Is that how you feel at times?
If so, call

**PREMIER DAN
the
HANDY MAN**

I may be able to help you.
(612) 578-3499

- Painting
- Door Installation
- Finish Carpentry
- Auto Detailing
- Appliance Repair
- Knife Sharpening
- Cleaning
- More!

EMPLOYMENT

EMPLOYMENT

Sanford Luverne Medical Center
is currently accepting applications for FT (Full-Time), PT (Part-Time) and PRN (Part-Time as Needed) positions:

- CERTIFIED MEDICATION ASSISTANT - PRN
- CERTIFIED MEDICAL ASSISTANT - PT
- CERTIFIED REGISTERED NURSE ANESTHETIST - FT
- CT TECHNOLOGIST - PT
- HOME HEALTH AIDE - PT, PRN
- HOUSEKEEPING - PT
- LICENSED ALCOHOL AND DRUG COUNSELOR - PT
- LPN, HOSPICE - PRN
- LPN, CLINIC - PT
- PARAMEDIC - FT
- RECEPTIONIST - PT
- RN, INPATIENT - FT

To apply, visit sanfordhealth.jobs search "Luverne" in the location search bar.

SANFORD
HEALTH
"Your Calling Your Place."

Sanford Luverne Medical Center | 877-243-1372

EEQ/AA

**ALL NATURAL
SIMPLY
ESSENTIALS**
RETHINK CHICKEN.
MULTI-BIRD CHICKEN

HELP WANTED

Poultry Production Workers

Starting Pay \$14.50 with excellent benefits!
Now hiring Directly
Simply Essentials in Charles City, IA
1st and 2nd Shifts Available

Requirements:

- Humanely handle live birds
- Perform deboning and/or cutting of chicken
- Weigh, Wrap, and prepare poultry for shipment
- Willingness to learn
- Reliable - have good attendance

Please contact:
Recruiters at Simply Essentials
641-228-4127 ext. 2010
Or email mfranksain@simply-essentials.com

Star Herald CLASSIFIEDS

RENTALS

NOW LEASING

**1 BEDROOM
CENTENNIAL
APARTMENTS**
For those 50+ or Disabled
Income based rent + ALL
utilities included
Pets welcome
(507) 283-2652
LloydManagementInc.com
Equal Housing Opportunity

Farmland for Rent: looking for a farmland renter in Rock County. Rosedell township Section 22, SE 1/4, 160 acres 128 tillable. All offers considered. Call Mary Ann Davis at 612.729.6751. (12.24-1.11)

For Rent: one-large bedroom apartment. Stove and refrigerator furnished. No pets. Call 507-283-4095 or 507-290-1948. (tc)

For Rent: one-bedroom apartment near downtown Luverne. \$290 per month. No Pets. Call 605-201-6427. (tc)

RENTALS

Oakwood Apartments

401 Oak St., Ellsworth

• 1 Bedroom Unit Available

Unit Available

Water, Sewer &
Garbage Included.

Rent Based on Income

AVAILABLE IMMEDIATELY

**Van Binsbergen
& Associates, Inc.**

320-269-6640 ext. 22

Equal Housing Opportunity

www.vanblc.com



MISCELLANEOUS

HAVE A UNIQUE SERVICE OR BUSINESS? Get the word out to over 1.4 million households. Call WIDE AREA CLASSIFIEDS today, 507-359-7326. (tc)



Minnesota Classified Advertising Network

EMPLOYMENT

NOW HIRING WELDERS
Machinist, Powder Coat. Pay based on experience. Resumes: receptionist@rdmofmn.com or stop in and apply: 703 1st Ave SE. Dodge Center, MN 55927

SPORTING GOODS

GUN SHOW JANUARY 5-7
La Crosse Center, South Hall, 300 Harborview Pl, La Crosse, WI. Fri 3-8pm, Sat 9am-5pm, Sun 9am-3pm. Admission: \$6 (14 & Under FREE) Buy/Sell/Trade 608/752-6677 www.bobandrocco.com

Your ad here!
Only \$279 to reach a statewide audience of 3 million readers!!! 1-800-279-2979

MISCELLANEOUS

SPECTRUM TRIPLE PLAY
TV, Internet & Voice for \$29.99 ea. 60 MB per second speed. No contract or commitment. More Channels. Faster Internet. Unlimited Voice. Call 844/290-5838

A PLACE FOR MOM

The nation's largest senior living referral service. Contact our trusted, local experts today! Our service is free/no obligation. Call 844/347-2104

STOP OVERPAYING FOR YOUR PRESCRIPTIONS!

Save! Call our licensed Canadian & International pharmacy, compare prices & get \$25.00 OFF your first prescription! Call 877/210-2257 Promo Code: CDC201725

MISCELLANEOUS

DONATE YOUR CAR

truck or boat to Heritage For The Blind. Free 3-day vacation, tax deductible, free towing, all paperwork taken care of 800/439-1735

DISH NETWORK

190+ channels. Free install. Free hopper HD-DVR. \$49.99/month (24 mos.) Add high speed internet - \$14.95 (where avail.) Call today & save 25%: 1855/562-4309

**ADVERTISE HERE
STATEWIDE IN 260+
NEWSPAPERS FOR
ONLY \$279 PER WEEK!
CALL 800-279-2979**

FDA Registered Hearing Aid! ONLY \$299!

FREE TRIAL Try our Apollo-6200 hearing aid risk-free for 45 days.

- Hearing aids by mail for 38 years
- Over 650,000 satisfied customers

SEND NO MONEY! If you like it then pay only \$299! Comfort fit • Crisp clear sound

- ✓ 100% Risk-FREE
- ✓ 45-day home trial
- ✓ FREE shipping
- ✓ Payment plans Call for details!
- ✓ Licensed hearing aid dispensers on staff

100% digital • Discreet size • Customer favorite

By Phone (Mon-Fri • 8 am - 5 pm CT) **1-855-819-8628** Promo code: 88-120

More Info www.HHEnow.com/minnesota MB17-NM004Gc

HANG UP ON FRAUD.

Stop fraud before it starts. Get a FREE fraud prevention toolkit for older adults.

EMAIL: consumer.protection@state.mn.us

CALL: 651-539-1600 / 800-657-3602 (toll-free outside the Twin Cities)

COMMERCE DEPARTMENT

Ice Fishing

Ballard's Resort on Minnesota's Lake of the Woods offers cabins, fish houses, meals, beverages the works.

Book your winter ice fishing adventure now... **SAVE \$100 or MORE per person!**

Call and ask about the "Winter Fishing Specials".

1-800-776-2675 FishBallards.com

The **Bluestem**
CASUAL • FRESH • LOCAL

CLOSED

Sundays and Wednesdays from **January 10 - April 25**

Except **VALENTINE'S DAY** Wednesday, Feb. 14



Catering on Wednesdays will still be available

507-449-2583
1202 S Kniss, Luverne, MN
www.the-bluestem.com [facebook](#)

The news of Rock County. Updated daily.
Star-Herald.com

Congratulations to **Rock County EYE CLINIC**

on their beautiful state-of-the-art building.

RCM
Reynolds Construction Management
INCORPORATED
General Contractor

Loosbrock Electrical Construction, LLC
Electrical

McClure
PLUMBING, HEATING, AIR CONDITIONING, INC.
Mechanical

SANDS
DRYWALL INC
Gypsum Board

Len's AWNING & CANVAS
Awnings

Rmk Painting
Paint

Bittner Masonry
Masonry

JL Larson
Acoustical Ceilings

Roof Systems
Roofing