



Rock County STAR HERALD

Rock County's oldest business, printing since 1873

Thursday, September 29, 2022



Photos courtesy of Hills-Beaver Creek High School

About 450 high school students sit in silence as they watch a mock accident caused by distracted driving and the events that unfold when the five students in the two vehicles are attended to by Luverne firefighters and Rock County Ambulance paramedics. Students also witnessed the distracted driver arrested by the Rock County Sheriff's Office and the fatally injured being taken away by Hartquist Funeral Home while distraught parents of two of the victims weep at the scene. Discussion followed in the Luverne High School performing arts center.

Mock accident illustrates consequences of distracted driving

By Jason Berghorst

Students from Luverne and Hills-Beaver Creek high schools gathered on the west end of the Luverne school campus Sept. 21 for an eye-opening experience.

About 450 students witnessed a mock accident to demonstrate the dangers of distracted and impaired driving just days before each school's homecoming celebration.

The staged event included heavily damaged cars and five LHS students as actors in the scene. The students were wearing make-up to appear as though they had suffered injuries.

Luverne senior Tyson Cowell played the role of a teenage drunk driver who was arrested by School Resource Officer Jeff Stratton.

Kari Lais and Ryan DeBates, the real-life parents of two other student actors, arrived on the scene, playing the roles of scared, upset parents.

The presentation included the arrival of first responders including the Rock County Sheriff's Department, Rock County Ambulance, Luverne Fire Department and Minnesota Highway Patrol.



At the mock accident Wednesday, Sept. 21, at Luverne High School, Rock County Ambulance and Luverne Fire Department personnel pull one of the victims from a vehicle.

LHS and HBC mock accident/see page 2A

Luverne city administrator search narrows to four candidates

By Lori Sorenson

With the pending retirement of City Administrator John Call in December, the Luverne City Council is working on a transition strategy to replace him.

The Luverne City Administrator Search Committee reviewed 30 resumes and applications for the position, and following seven first-round interviews, four have been recom-

mended as finalists.

They include Rebecca Schrupp of Canby, Erik Hansen of Tracy, Lee Mattson of Waseca and Jill Wolf of Adrian. Luverne City Council members reviewed their resumes and information at Tuesday's meeting to determine the next steps.

This summer the council members

City administrator search/see 3A

New generators come on line with planned outage Sunday

By Lori Sorenson

The city of Luverne is alerting residents and businesses of a planned power outage and sounding of civil defense sirens this weekend.

The outage will be at 7 p.m. Sunday, Oct. 2, in order to bring on line the city's new 3 MW Caterpillar generators installed at the Electrical Power Plant earlier this year.

According to Luverne City Admin-

istrator John Call, the goal of the generator project is to have back-up power for the city in the event it is cut off from transmission lines that carry power into the city.

"These disaster events are usually caused by ice storms, tornados, straight line winds or possibly some type of disaster within the electrical grid system,"

Planned outage/see page 3A

NextEra offers turbine tours

By Lori Sorenson

The Walleye Wind Farm in western Rock County is at peak construction with five turbines now erected among a total of 40 in the project.

NextEra Energy Resources is building the wind farm capable of generating approximately 110 megawatts of energy.

On Tuesday and Wednesday, Sept. 20 and 21, NextEra hosted tours of the construction in progress for local leaders and media.

"Construction is providing a significant economic boost to Rock County and the state, creating up to 185 construction jobs, and stimulating the purchase of regional goods and services from local vendors," said NextEra spokesperson Sarah Borchardt.

"Over the next 30 years, the project is expected to generate up to \$18 million in additional revenue for Rock County."

Turbine tour/see page 5A



Lori Sorenson photo/0929 wind tour blade

NextEra's Sarah Borchardt shows the noise-mitigating serrated edge of a turbine blade during Wednesday's tour.



COMMUNITY CALENDAR

Meetings

Blue Mound Quilters will meet at 6 p.m. Monday, Oct. 3, at the Sewing Basket in Luverne to sew checkbook covers. Materials will be available at the store. Bring a basic sewing kit, lunch, and a sewing machine with a walking foot. Call 507-227-4076 with questions.

Parkinson's Support Group will meet at 2 p.m. Monday, Oct. 3, at Poplar Creek Care Center. Call Dianne Karlstad at 507-530-3307 with questions.

Mobile dental clinic Sept. 29

The mobile dental clinic will be in Luverne on Thursday, Sept. 29, at the Rock County Health and Human Services community room. This clinic provides dental care for adults and children ages 0-100+.

Call 612-746-1530 to schedule an appointment. All forms of insurance accepted. The clinic's appearance in Luverne is organized by the #Luv1LuvAll Rock County Oral Health Task Force.

Paint the Prairie purple Oct. 1

To help raise awareness and show support for the Dementia Walk for a Cure on Oct. 1, organizers encourage "Paint the Prairie Purple" during the week of Sept. 26-30. Pictures of decorated home and business exteriors can be sent to ace.rock@co.rock.mn.us. The event is sponsored by the SW MN Dementia Awareness Network (SWDAN).

Dementia Walk is Oct. 1

The Dementia Walk for a Cure is Saturday, Oct. 1, at the Luverne City Park. Registration begins at 9 a.m. with the walk at 10 a.m. All funds raised will be used to increase awareness and to promote dementia education. In case of inclement weather, the walk will take place at the Generations Event Center in Luverne. For more information or to register contact Linda Wenzel at A.C.E. of SW MN, 507-283-5064.

Historical Society 'drive-in' trivia lunch event Oct. 3

The Rock County Historical Society annual meeting is at noon Monday, Oct. 3, at the Big Top Events Center. Learn about Rock County's restaurant history trivia with the drive-in-themed event. RSVP by Monday, Sept. 26, at the History Center for \$15. Or, purchase tickets at the door for \$25. The History Center phone number is 507-283-2122.

CoffeeBreak starts Oct. 4

The kickoff meeting of CoffeeBreak begins at 9:30 a.m. Tuesday, Oct. 4, and will meet each Tuesday at the Christian Reformed Church, Luverne. There will be StoryHour Bible stories and playtime for ages 3 to kindergarten and a nursery is available. It's free for all faiths and no prior Bible knowledge necessary. Call Kristi Stroeh at 507-227-5102 or email at kristi.stroeh@hotmail.com

Free food for seniors Oct. 6

Nutrition Assistance Program for seniors 60 and older, sponsored by A.C.E. of SW MN, will be from 2 to 3 p.m. Thursday, Oct. 6, with drive-thru distribution in the parking lot off Maple Street at the new office location on the east side of Generations Event Center. Pre-registration is required. Call Linda Wenzel at 507-283-5064.

Shredding truck Oct. 8

St. Catherine Church will host the Dakota Shred-It truck from 9 a.m. to noon Saturday, Oct. 8, at the Luverne Laundry Room parking lot. Freewill donations are accepted.



Pictured at the Sept. 20 Fareway ribbon-cutting are (from left) Tony Schomacker, Andrea Chase, Jeff Cook, John Cramer, Bret Wiltse, Keith Kilgore, Mike McCormick, Garrett Piklapp, Michel Cox, Mayor Pat Baustian, Jeff Keinroth, Koby Pritchard, Brian Tieskotter, Gary and Janine Papik, Dave McDonald, Greg Burger, Jeremy Jacob, Tyler Bryant, Kathleen Schmitt, Mark Tieskotter, Megan Janshen, Holly Sammons, Henry Keizer, Mark DeYoung, Juan Navarro, Rob Stevenson and Becky Walgrave.

Fareway Meat Market celebrates opening with ribbon-cutting

A ribbon-cutting Tuesday, Sept. 20, celebrated the opening of Fareway Meat Market at Main Street and Highway 75 in Luverne. The renovated 2,300 square foot store is the first stand-alone Fareway meat market in Minnesota and offers fresh meat and a full-service butcher counter, plus main course options and a variety of sides and regional products.

"Thanks to local city and economic development officials and property owners for helping make this project possible," said Fareway President Garrett S. Piklapp. "We look forward to serving and becoming an integral part of the community." The store is open from 9 a.m. to 7 p.m.

(Photo courtesy of Luverne Chamber)



Rock County 4-H'ers compete at Minnesota State Horse Show, western heritage

By Mavis Fodness

Six Rock County 4-H'ers earned participation to the Minnesota State 4-H Horse Show Sept. 16-19 in St. Paul.

Riders included Mallie Fick, Morgan Bonnett, Lily Ehlers, Cash Bonnett, Kennedy Safar and Kellie VanDerBrink.

Safar competed in grade 13 events and finished eighth in poles, fifth in jumping figure 8 and fourth in barrels. Safar also competed in the key race.

VanDerBrink served as the county's grand entry rider. She competed in grade 12 events, finishing tenth in jumping figure 8 and fifth in barrels. She also competed in poles and key race.

Ehlers competed in grade 11 western showmanship, western pleasure and western horsemanship.

Morgan Bonnett competed in grade 10 western showmanship, trail, poles, key race, western pleasure and barrels.

Cash Bonnett competed in grade 10 poles, jumping figure eight, key race and barrels.

Mallie Fick showed grade 9 trial, where she received seventh-place ribbon. She also competed in western showmanship and western pleasure.



Photo courtesy of Rock County 4-H

Rock County sent six 4-H'ers to the Minnesota State 4-H Horse Show at the Minnesota State Fairgrounds in St. Paul. Pictured from left are Cash Bonnett, Kennedy Safar, Morgan Bonnett, Lily Ehlers, Kellie VanDerBrink and Mallie Fick.

Western Heritage

The Minnesota State 4-H Western Heritage event conducted Aug. 8 in Sauk Rapids featured four Rock County 4-H'ers earning ribbons at the annual event.

The team of Ayden Bonnett and Cash Bonnett placed second in se-

nior pen-to-pen competition.

Ayden Bonnett finished third in senior breakaway.

Kennedy Safar placed second in senior round pen.

Kellie VanDerBrink finished fifth in senior goat tying.

#TellUsTuesday Results

Scan Here to Vote for this Week's Survey!



What Are You Most Looking Forward To This Fall?

| | |
|-----------------------------|-----|
| Hoodie/Sweater Weather | 45% |
| Leaves Changing | 27% |
| Pumpkin Everything! | 5% |
| No thanks, I prefer summer! | 23% |

Springwater Township Mowing Notice

All landowners should have the shoulders mowed by October 1, 2022.

Springwater Township Board

Are you at risk?

Get Screened for Risks of Stroke and Cardiovascular Disease

5 Screening Package for \$149

Call 877-881-3319

LIFE LINE SCREENING
The Power of Prevention

Dial-a-Specialist

Your One Stop Guide to Local Businesses

DR. MICHAEL SMITH
ROCK COUNTY CHIROPRACTIC
Laser Therapy • Custom Orthotics
Men, Women & Children's Health
Athletic Care • Massage Therapy
Work & Auto Injuries • Postural Restoration
WWW.ROCKCOUNTYCHIROPRACTIC.COM
283-2561 • 103 E. MAIN, LUVERNE

• Chiropractic

Viking Electric LLC
Tim Gangestad
Owner
(507) 290-2595
Conquering all of your electrical needs!
Residential • Commercial • Agricultural

• Electrician

Luverne
MINNESOTA City Offices
Love the life!
PO Box 659, Luverne, MN 56156
507-449-2388 (24 hour voice mail)
www.cityofluverne.org

• City

LUVERNE HEALTH & WELLNESS
Codie Zantenhorst, DC
LuverneChiro.com
Chiropractic Acupuncture Massage
Auto, Work, and Sports Injuries
109 S Freeman Ave Luverne, MN
507.449.4400

• Chiropractic

Bos earns award for protecting drinking water

The Minnesota Department of Health (MDH) and the Minnesota Rural Water Association (MRWA) recognize Doug Bos from Rock County Rural Water for his exceptional efforts to protect community drinking water sources.

Bos received a 2022 Source Water Protection Award from MDH and MRWA.

Preserving quality of drinking water sources is a critical issue in southwest Minnesota, which has limited water resources and nitrate contamination concerns.

Bos partnered with local producers, nonprofit organizations and state and federal agencies to develop new easement programs, which place land in permanent protection.

These easement programs benefit drinking water quality by reducing nitrate contamination and have now been scaled up statewide.

Through this work, Bos has helped secure over 900 acres of perpetual easements.

Bos has also worked extensively with local producers and cooperatives to implement best manage-

ment practices that benefit groundwater quality on 1,700 acres of land, made possible through Clean Water Fund-supported grants.

"Doug has been one of the key leaders in southwest Minnesota in promoting drinking water protection," said Aaron Meyer, MRWA Source Water Protection Planner.

MDH Environmental Health Director Tom Hogan commended Bos. "These investments in local relationships and strategic partnerships have yielded many dividends, and their impacts reverberate across the state," Hogan said.

MDH and MRWA work with public water suppliers and other stakeholders to develop and implement protection plans that include efforts to prevent contamination of the drinking water source.

Prevention is used as the first step in protecting public health and is increasingly important as Minnesota faces threats to water quality.

For more information go to doug.schultz@state.mn.us or contact Doug Schultz at 651-201-4993.

Administrator search/continued from 1A

decided against paying an outside agency to recruit candidates and instead formed a City Administrator Recruitment Committee.

Committee members include Craig Oftedahl, Mike Cox, Ashley Kurtz, Tim Gust, Caroline Thorson, Mayor Baustian and Connie Connell.

"It has been a very thorough process and time-consuming," Oftedahl said.

"It has been an interesting experience and very educational."

Committee members worked on updated job description, position profile, salary range, and geographic scope for the recruitment of a new city administrator.

They asked current department heads what traits and qualities they'd like to see in the new city administrator, and they also surveyed city leaders about knowledge, skills, abilities and minimum training and experience they wanted in a new city administrator.

A starting salary range of \$120,000 to \$145,000 is recommended, considering the city's internal

pay equity and pay plan along with outside market trends.

City Clerk Jessica Mead has also been working with the League of Minnesota Cities and other professional development colleagues to establish a recruitment plan.

Call formally announced his retirement at the May 24 city council meeting.

"The last 17 years in Luverne have been the highlight of my 35-year career in city management," Call wrote in his resignation letter to the council.

"With a progressive mayor and council and highly competent department heads and employees, we have been able to move the city forward in many areas of economic development, housing and quality of life while at the same time delivering great city services on a daily basis."

Call, 63, said he and his wife, Brenda, will continue living in Luverne, and he will work with the council to ensure a smooth transition to the next administrator.

THC public hearing/continued from page 1A

local moratorium adoption, she's not able to sell any of her product in Rock County.

She requested grandfathering her business in to allow her to resume her business and sell her products.

Commissioners tabled Wipf's request until additional information could be researched.

According to the ordinance, it sets forth licensing requirements in an effort to prevent children and young adults (anyone younger than 21) from purchasing and using hemp-derived products.

Hemp-derived products have become increasingly common and are available in a variety of flavors and forms that appeal to children and young adults and may lead to negative health consequences,

the proposed ordinance stated. To view the "Rock County Hemp Derived

Products Ordinance," go to the Rock County website at www.co.rock.mn.us.

LESSONS START OCTOBER 17

figure skating

HOCKEY CLASSES

Learn to Skate

REGISTER FOR LESSONS

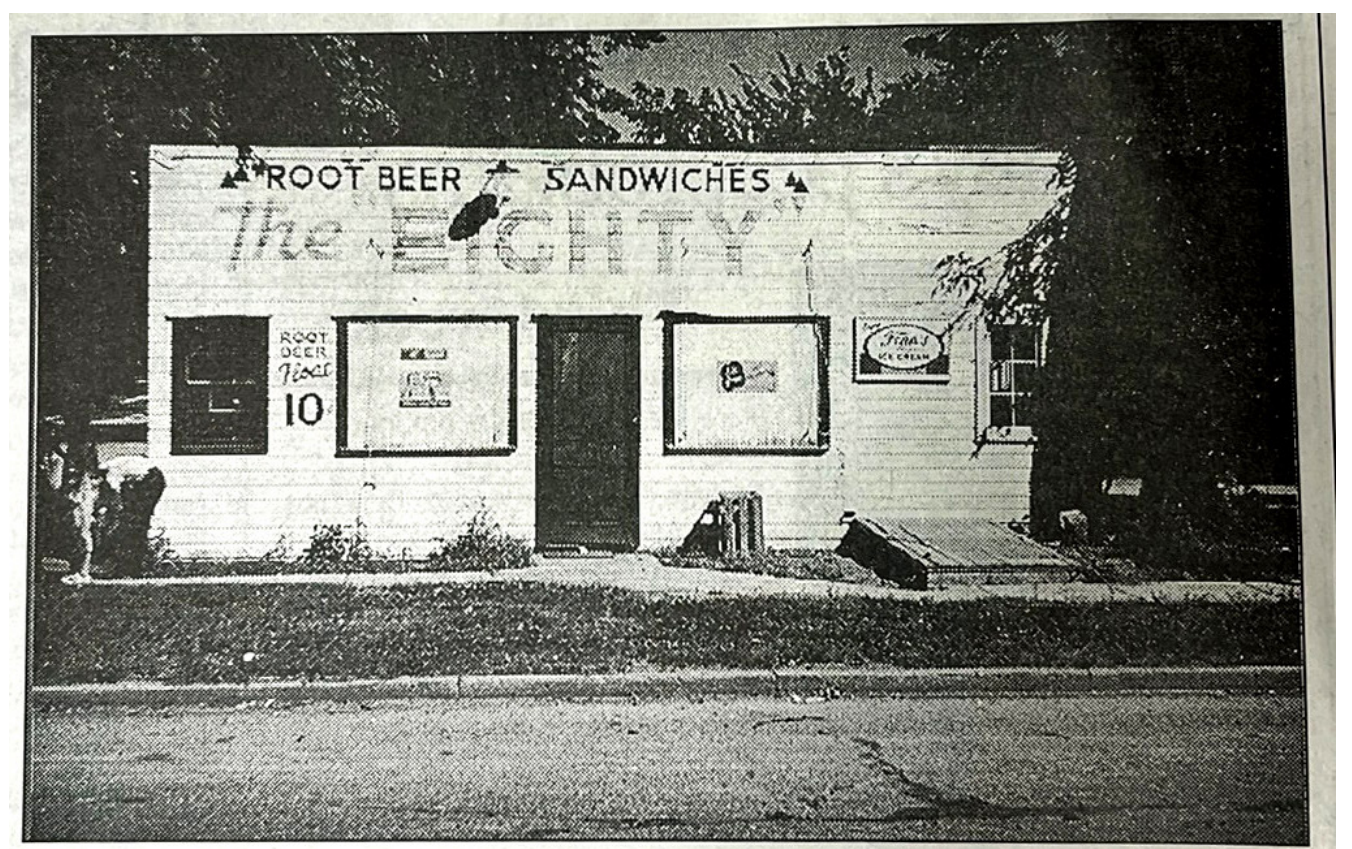
bluemoundfigureskating.com

Follow us for more information!

Questions:

Katie Kopp 507-227-1999 or Sabrina Sowles 507-360-1629

bmfluv@yahoo.com



The Eighty was Luverne's first drive-in. It stood on the southeast corner of the Bishop and Kniss intersection and featured root beer in frosted mugs served by carhops.

Historical Society hosts 'Era of Eateries'

By Lori Sorenson

The Rock County Historical Society annual meeting is at noon Monday, Oct. 3, at the Big Top Events Center with an "Era of Eateries" drive-in themed meal and trivia contest.

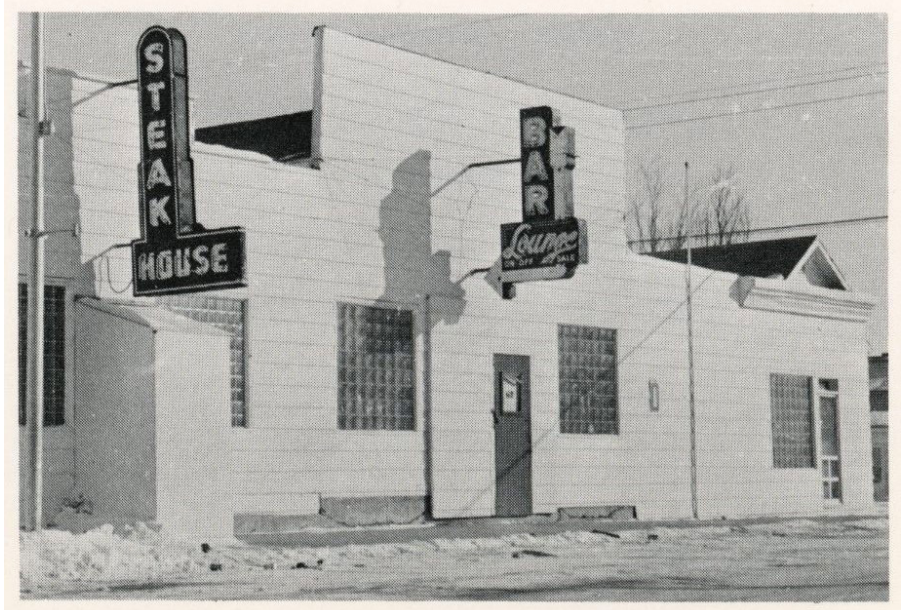
According to History Center director Wendel Buys, planners decided to focus on Rock County's restaurant history for its annual meeting after their social posts about former local restaurants generated so much interest.

"We shared pictures of them as they were in their heyday," he said. "And those Facebook posts were very popular."

Monday noon's meeting will feature 20 restaurants in its program through a trivia game that will include black-white images of the former businesses.

The drive-in-themed meal will be burgers and chips along with mini glass bottles of Coca Cola that were donated by Chesterman Bottling Company.

A short business meeting to elect board members will follow the trivia game and lunch.



The original Magnolia Steakhouse will be among the featured eateries Oct. 3.

"Bring your appetite and your knowledge of Rock County restaurant trivia for a fun gathering over the noon hour," Buys said.

The cost of the meal is \$25,

and proceeds will benefit the ongoing work of the Rock County Historical Society.

The History Center phone number is 507-283-2122.

Planned city power outage/continued from page 1A

Call said. "The generators need to be tested in a real time situation to make sure that they are ready when called upon in the case of a real disaster."

City electric utilities staff will test the system with the assistance of engineers, electrical technicians, and representatives from Caterpillar that will be on-site working with Missouri

River Energy Services to make sure transition goes smoothly.

During the 7 p.m. test Sunday, Luverne electricity customers will experience a short electrical outage lasting approximately 30 seconds up to 2 minutes.

At that time, the generators will start and proceed to carry the load for approximately one hour.

At the conclusion of the generator testing, the civil defense sirens will be activated to let the public know that the testing period is over and that the city is back on the normal electrical grid.

Call said the city will do what it can to make sure that all residents and businesses are aware of Sunday's short power out-

age so that they can plan accordingly.

"The City of Luverne appreciates your patience as the test is required to commission the newly installed generators," Call said.

"With the new generators in service, the city has increased reliability for all of our electricity customers." Questions can be directed to 507-449-2388.

LHS and H-BC mock accident/continued from page 1A

Fire department members used tools to cut open one of the damaged cars, and those playing the roles of injured victims were taken away in ambulances.

Jeff Hartquist and Grant Robinson from Hartquist Funeral Home also arrived on the scene and took one of the student actors away in a hearse.

Following the accident

scene, students moved to the Performing Arts Center and heard a presentation from Matt Logan, who lost his teenage daughter in a distracted driving accident in September of 2012.

The students also heard from a panel of local leaders who discussed how accidents impact families, first responders, schools and the community.

According to organizer Amy Cook, the mock accidents happen every four years. "We want to be able to keep the events impactful and not too frequent," Cook said. "By doing it every four years, all LHS and H-BC students will get to experience it one time during high school."

Cook said she appreciates all of the support that

helps make this event possible, including bleachers from the Rock County Fair Board and the sound system from the Luverne Area Chamber of Commerce.

"I am so grateful to live in a community that supports a great event to bring awareness to students and adults about the importance of responsible driving," Cook said.

GET THE FLU VACCINE

Protect your family and community

DRIVE-THRU FLU VACCINATIONS

DATE AND TIME
Saturday, October 8
9 a.m.-Noon

LOCATION
Sanford Luverne Clinic
1601 Sioux Valley Dr.

Masks encouraged but not required

Call (507) 283-4476 for more information.

SANFORD HEALTH

Two really nice guys ...

District 21A voters face a difficult choice in November

Rock County voters have a difficult decision to make on Election Day, Nov. 8, 2022.



THE NORTHVIEW

By Brenda Winter, columnist

Two really nice guys are running to represent Minnesota District 21A.

The Republican incumbent Joe Schomacker and the Democratic-Farmer Labor challenger Pat Baustian are both really nice guys.

Both live in Luverne. Both are graduates of Luverne High School.

Joe has held the office of state representative since 2012 – so he's got plenty of experience.

Pat served eight years on Luverne's city council before his election as mayor in November 2010 – so he's got plenty of experience.

Pat's been working hard for years to keep businesses on Main Street.

Joe's family owns three Main Street businesses: The Sewing Basket, Schomacker Cleaning, and Schomacker Flooring and Appliance.

Pat proudly served as a member of the South Dakota Air National Guard for many years.

Joe proudly supports the military and law enforcement. So does Pat.

I've crossed Joe's path a time or two at various

public meetings, and I've found him to be an incredibly witty person – something that receives high rank in my book.

But I've also enjoyed generous hospitality at Pat's house. Including the gathering that followed last summer's Class of 1981 40th class reunion. ('81 forever!)

In high school, Pat was the quiet guy in the room. He minded his own business and hung out with the ag guys. He went directly into military service after high school.

Joe was on the debate team before going to college to study public administration, speech communication and political science.

Joe is a single guy who supports his family in their businesses.

Pat has a beautiful wife, four kids and a dog.

So what's a voter to do? I suggest evaluating your core values and researching each candidate's position on issues that matter to you.

Then vote for the candidate whose core values align with yours.

That should make voting for one of two really nice guys a little less difficult.

Star Herald issues all 'thumbs up'

STAR HERALD EDITORIAL

Everything's coming up Thumbs Up this week in the Star Herald's Thumbs-Up, Thumbs-Down editorial.

Thumbs up – to Fairway Meat Market and their grand opening. This business is clearly a class act, from its bow-tie-sporting manager to its attractive meat cases fully stocked with mouth-watering meats and groceries.

Thumbs up – to PrairieE Loft apartments for their steady construction progress and now a finished parking lot (with some help from the City of Luverne). These buildings represent the latest in energy-efficient construction resident amenities. Tenants will be moving in next month.

Thumbs up – to the City of Luverne and its contractor for the newly paved Main Street just in time for the Tri-State Band

Festival. The Saturday morning parade competition is always a sight (and sound) to behold, but the clean, black asphalt really set off the brightly-colored uniforms and flag corps.

Thumbs up – to final stages of the Luverne Loop trail being completed. The Loop has made our "thumbs up" in the past, but it can't be overstated the valuable amenity this trail is to our residents and visitors.

Thumbs up – to Michelle DeKam and the 16 coaches and eight referees who volunteered

their time and energy to make a soccer season happen for 210 kids in kindergarten through seventh grade.

It has been a sight to behold over the past seven weeks on the west edge of Luverne to watch the kids in jerseys running around chasing soccer balls while parents, grandparents and other fans watch from their chairs and blankets on the grass nearby.

Send your suggestions for the Star Herald's Thumbs Up and Thumbs Down to editor@star-herald.com, or call 507-283-2333



Loading of haybales needs to take place off state highway to be safe, legal

Question: Is it legal for farmers to load hay on a state highway? Our neighbor bales several miles of state highway ditches. To load the round bales, he drives down the highway with a pickup and bale wagon. His son is in the ditch with a tractor and loader. The son gets a bale on the loader and driving perpendicular to the road drives up the ditch and puts the bale on the bale wagon. The son with the loader stops with his front wheels on the shoulder of the road and puts the bale on the trailer. The bale wagon is stopped on the state highway in the lane of traffic so the bale can be loaded. Is this legal?

Answer: This would not be safe or legal. The loading would need to take place off the highway.

With harvest season upon us, this is a great time for everyone to remember when sharing the road:

What drivers should know about farm vehicles on the road:

- Farm equipment is large and



ASK A TROOPER

By Sgt. Troy Christianson, Minnesota State Patrol

heavy, making it hard for operators to accelerate, slow down and stop.

- The equipment makes wide turns and sometimes crosses over the center line.

- Farm vehicles can create large blind spots, making it difficult for operators to see approaching vehicles.

Safety guidance for motorists:

- Pay attention at all times when driving.
- Watch for debris dropped by trucks. It is safer to brake or slowly drive through debris than to veer into oncoming cars or off the road.

- When approaching farm equipment, slow down and use caution. Put additional space between your vehicle and the farm equipment ahead. Don't assume the equipment operator can see you.

- Be patient and wait for a safe place to pass.
- Wear seatbelts.
- Drive with headlights on.

Safety guidance for farm equipment operators:

- Use lights and flashers to make equipment more visible.
- Use slow-moving vehicle emblems on equipment traveling less than 30 mph.
- Drive slow-moving vehicles in

the right-hand lane as close to the edge of the roadway as possible.

- Consider using an escort vehicle when moving equipment, especially at night and if the equipment is large enough that it may extend across the center line.

- Avoid encouraging or signaling motorists to pass. Pull over when safe, and let traffic pass.

- Pick up any debris left on the highway by the equipment or contact MnDOT to remove it.

- Plan your routes so wide equipment will not hit or damage signs, guardrails, light poles and other roadway structures.

Question: I have noticed cars that have a high-mounted center brake light that flashes about four times before becoming steadily lit (like other brake lights). I'm seeing car dealers are installing them on some cars. Are these flashing lights legal?

Answer: These types of devices and alterations to the brake lights are not legal according to state and federal law. An auto

dealer would also be in violation if they installed that type of light on a motor vehicle.

Not only are flashing red lights illegal but so are modifications to the rear taillights and brake lights. I've come across several taillights and brake lights that have been covered or tinted. Altering or obscuring any portion of the lamp affects the intensity of light emitted. This could be an issue in a motor vehicle crash both criminally and civilly.

You can avoid a ticket – and a crash – if you simply buckle up, drive at safe speeds, pay attention and always drive sober. Help us drive Minnesota toward zero deaths.

If you have any questions concerning traffic-related laws or issues in Minnesota, send your questions to Sgt. Troy Christianson – Minnesota State Patrol at 2900 48th Street NW, Rochester MN 55901-5848. (Or reach him at, Troy.Christianson@state.mn.us)

E-mail: editor@star-herald.com Web site: star-herald.com
Phone: 507-283-2333 Fax: 507-283-2335

Published Thursdays by Tollefson Enterprises
POSTMASTER: Send address changes to 117 West Main, P.O. Box 837, Luverne, MN 56156. Periodicals postage paid at Luverne, Permit #33 and at additional mailing offices.

General manager: Rick Peterson
Sales: Wyatt VanSteenberg
Office manager: Deb Lusty
Office assistant: Jennifer Nelson
Production Manager: Heather Johnson
Production: Brooke Huisman

News staff:
Lori Sorenson, editor
Mavis Fodness, reporter
Esther Frakes, copy editor
Sports inquiries:
editor@star-herald.com

Rock County
STAR HERALD
Rock County's newspaper since 1873

(ISSN 0889-888X)
SUBSCRIPTION RATES

\$74 per year in Rock County; \$91 per year all other areas. Single copies \$1.25

Entire contents copyrighted by
Tollefson Publishing Roger Tollefson, publisher

The *Star Herald* encourages letters to the editor expressing the opinions of readers and intends to print all letters. Letters not meeting the guidelines will not be printed. The *Star Herald* will verify the authenticity of all letters. Letters must have the name of the writer, a signature and address.

Unsigned letters will not be considered. The *Star Herald* will edit for grammar, spelling and clarity. Any letters containing offensive language, libelous or slanderous material, or misleading or false information will be rewritten before being published. The *Star Herald* will not publish letters written with the sole intent to advertise or serve as a thank-you. Letters with more than 300 words may be edited. The deadline for letters is Monday 10 a.m. They may be delivered or mailed to the editor, *Rock County Star Herald*, P.O. Box 837, 117 W. Main St., Luverne, Minn. 56156.

ON THE RECORD

Dispatch report

Sept. 16

- Public assist was conducted in Adrian.

- Complainant on W. Edgehill Street reported suspicious activity.

- Complainant on N. Cedar Street reported suspicious activity.

- Complainant at the skate park reported suspicious activity.

- Complainant on 101st Street, Beaver Creek, reported suspicious activity.

- Complainant on E. Warren Street and S. McKenzie Street reported a noise complaint.

Sept. 17

- Complainant on 100th Avenue, Luverne, reported property damage at location.

- Complainant on N. Donaldson Street requested a welfare check on a juvenile.

- Complainant on Highway 75, near I-90 overpass, reported debris on the road.

- Assistance from another department was called to assist at location on N. Kniss Avenue.

- Complainant on W. Warren Street reported a noise complaint.

- Complainant at National Guard construction site reported trespassing.

Sept. 18

- Assistance from another department was received eastbound on Interstate 90, mile marker 1, Valley Springs, South Dakota.

- Complainant on N. Kniss Avenue reported harassing communications.

- Assistance from another department was received at location on N. Kniss Avenue.

- A solicitor license was issued.

- Complainant on W. Warren Street reported a noise complaint.

- Complainant on E. 4th Street, Hardwick, reported vandalism.

Sept. 19

- Complainant reported suspicious activity.

- Assistance from another department was received on N. Cedar Street.

Sept. 20

- A warrant was issued in Douglas County, Colorado.

Sept. 21

- Complainant reported identity theft.

- Complainant westbound on Interstate 90, mile marker 12, Luverne, reported a driving complaint.

Sept. 22

- Complainant reported harassing communications.

- Complainant southbound on Highway 75 from Highway 270, Steen, reported a driving complaint.

- Complainant on 31st Street, Ellsworth, reported a fire at location.

- Complainant east-bound on Interstate 90, mile marker 410, Valley Springs, South Dakota, reported debris.

- Complainant east-bound on Interstate 90, mile marker 5, Beaver Creek, reported a driving complaint.

Sept. 23

- Assistance from another department was received.

- Complainant reported identity theft.

- Complainant on S. Church Avenue, Hills, reported a civil issue.

In addition, officers responded to 2 motor vehicle accidents, 1 deer accident, 1 transport, 1 funeral escort, 14 ambulance runs, 3 paper services, 4 animal complaints, 6 fingerprint requests, 6 burn permits, 1 driver's license check, 1 gas drive-off, 1 alarm, 6 drug court tests, 4 purchase and carry permits, 1 stalled vehicle, 22 traffic stops, 7 abandoned 911 calls, 5 welfare checks and 1 report of cattle out.

NextEra hosts Walleye Wind Farm tour/continued from page 1A

Laydown yard

Wednesday's tour started at the NextEra temporary laydown yard north of Beaver Creek.

It's where roughly 250 workers currently report for duty each day for their role in the project that's now at its peak of construction activity.

The turbine blades, tower sections and motors are delivered directly to their respective sites, but the laydown yard houses construction trailers, hundreds of workers' vehicles, and stored equipment, such as wire and transformers.

The 10- to 15-acre site is leased during construction and will be reclaimed back to farm ground when the wind farm is finished.

Blades, tower sections and motors:

The tower sections come mostly from Marmon Energy in Brandon, South Dakota, the nacelles are manufactured by GE in Pensacola Beach, Florida, and the blades ship from North Dakota but are manufactured in Brazil.

The 40 Walleye Wind turbines are comprised of three different sizes:

Thirty-six turbines will have a 2.82-megawatt capacity and four will have a 2.5-megawatt capacity.

The four smaller ones will be nearly 263 feet tall from the ground to the top of the hub.

Of the larger 2.82-megawatt capacity turbines, 28 of them are 374 feet tall to the top of the motor hub and eight are 295 feet.

The blades are 203 feet long, so the total height of the largest turbines from the ground to the tip of the blade is 577 feet.

Each blade has a serrated edge to reduce the "whooshing" sound associated with spinning turbine blades.

This Leading Noise Trailing Edge technology is required by the Minnesota PUC to reduce sound and shadow flicker.

A smooth blue edge on the opposite side of the blade prevents ice build-up.

The hub is what the blades attach to. It is installed onto the machine head or nacelle, which houses the generator, gearbox and various control systems.

All this weighs roughly 250,000 pounds – or 125 tons, which makes it top-heavy when turbines are under construction.

The towers are erected in sections. After the bottom two are in place, the top sections are placed with support from "vortex" wrap to direct wind around the turbine, rather than sway it back and forth.

"The tower constantly sways, even in the lightest wind," said NextEra site manager Allen Collier.

"The tubes that are wrapped around it prior to installation of the nacelle help to break up the wind that flows across the tower causing excess sway and possibly the tower falling."

If wind speeds exceed 22 mph, work is halted.

Within 24 hours of erecting the top tower sections, the heavy nacelles must be placed to prevent the tower from swaying in the wind.

"If the nacelle is not placed, then the crane has to stay at-



Lori Sorenson photos/0929 wind turbine tour

The wind turbine blades are 203 feet long, so the total height of the largest turbines from the ground to the tip of the blade is 577 feet. The blades are equipped with anti-noise and anti-icing technology.



A large crane lifts a heavy nacelle into place atop a tower Wednesday, Sept. 21. The tower sections are stabilize by vortex wrap to prevent the wind from swaying until the hub, blades and nacelle are attached.

tached to provide support to the tower as well," Collier said.

The vortex wrap is removed once the turbine is complete.

Blinking red lights

The turbines are equipped with blinking red lights to alert aircraft traffic of their presence.

However, they'll blink only when aircraft is in the vicinity because they're equipped with ADLS technology.

The Automatic Detection Lighting System operates via a radar tower precisely located relative to where the turbines are erected. It detects when aircraft is in the vicinity and triggers the blinking lights.

Collector substation

The 40 Walleye Wind turbines feed the electrical grid through buried cables that send the power they're generating to a NextEra collector substation.

The collector substation steps it up to a higher voltage and sends it to a "point of interconnection" substation

owned by Northern States Power which sends it to the grid.

The collector substation and NSP substation are located on a permanent 5-acre piece of land northwest of Beaver Creek near the operations building where the Walleye Wind technicians will work.

What happens to old turbines?

As part of the Walleye Wind construction project, the seven towers of the previous MinWind I and II project were taken down this spring.

The Fiberglass blades were crushed to a powder that was recycled into concrete potash, and the metal components were used as scrap metal.

Walleye Wind project developer Danell Herzog repowered a wind farm in Pipestone County two years

ago that replaced 126 turbines with 44 newer, more efficient turbines.

"They were creative in what they did," she said. "They were able to break down the concrete. There was demand for the crushed concrete in the local community."

She said the scrap metal was in high demand.

"We had scrappers and salvagers begging us for the metal tower sections," Herzog said. "We literally had bidding wars over which scrappers could come and take the tower sections away."

She said the blades couldn't be recycled back then because the recycling technology didn't yet exist to crush them for concrete potash.

The nacelles were sold to developers like Elite Clean Energy who had similar turbine technology.

"We further identified a dozen wind tech schools, including Minnesota West Technical and Community College, that have wind technician programs, and we donated the nacelles to them so that kids could work on them," she said.

Community support

Herzog said the Walleye Wind Farm construction has faced challenges with weather and permitting like many of the projects she has overseen,

However, she said Rock County's Walleye Wind Farm has been special in significant ways.

"I have worked all over the country on these projects. People want the wind projects here, where in other areas you end up with a lot of opposition," she said.

"I believe, having worked in this area for awhile, you guys were among the early adopters of wind energy in this country, so it's not new and scary."

Once operational, the wind farm will generate \$400,000 to \$600,000 in annual tax revenues to Rock County and provide electricity to the Minnesota Municipal Power Agency through a 30-year purchase agreement.

PALACE

THEATRE

UPCOMING EVENTS

TALL GRASS GUITAR CLASS BENEFIT CONCERT

SATURDAY, OCT. 1 AT 7:00 PM
PALACE THEATRE • LUVERNE, MN

Tallgrass Guitar Class Benefit Concert

Supporting the Luverne Area Community Foundation

Saturday, October 1 7:00 pm

Tickets: \$25

SUPERPELS

BANK NITE MOVIE: DC League of Superpels

Thursday, October 6 6:00 pm

Sponsored by: First Farmers & Merchants Bank and Papik Motors

FREE ADMISSION

104 E. Main St. • Luverne, MN 56156 • 507.283.4339

WWW.PALACETHEATRE.US

LeafFilter

GUTTER PROTECTION

BACKED BY A YEAR-ROUND CLOG-FREE GUARANTEE

20% OFF

+

10% OFF

YOUR ENTIRE PURCHASE* SENIORS & MILITARY!

FREE GUTTER ALIGNMENT + FREE GUTTER CLEANING*

CALL US TODAY FOR A FREE ESTIMATE

1-833-645-1482

*For those who qualify. One coupon per household. No obligation estimate valid for 1 year. **Offer valid at time of estimate only. †The leading consumer reporting agency conducted a 16 month outdoor test of gutter guards in 2010 and recognized LeafFilter as the "#1 rated professionally installed gutter guard system in America." Manufactured in Plainfield, Michigan and processed at LMT Merox Group in Ohio. See Representative for full warranty details. Registration 139490922 CS# 103579 Registration# HIC-241995 License# 426255078 License# REC-51604 Registration# C137230 License# 535648 Suffolk HIC License# 522294H License# 2102212986 License# 262000022 License# 262000403 License# 2106212946 License# MHIC111225 Registration# 176447 License# 423330 Registration# H731804 License# 50145 License# 408993 Registration# 13949953900 Registration# H 19114 License# 216234 Registration# 9069083 License# 41354 License# 70561026 #10783648-9201 License# 423330 License# 270216945 License# L144769622 License# W005912

Estate Sale

1393 100TH AVE
LUVERNE, MN 56156

Friday, September 30th : 9 AM - 6 PM

Saturday, October 1st : 9 AM - 4 PM

Sunday, October 2nd : 10 AM - 3 PM

Dressers, tables, cupboards, shelving, refrigerator, microwave, K+A Bitzy Designs, wreaths for all seasons, glass & much more!

www.star-herald.com

LIGHTS, CAMERA, ACTION!



Luverne High School celebrated the kickoff to Homecoming Week with Monday night's coronation in the performing arts center. Pictured in front (from left) are Audrie DeBates, Christina Wagner, Jocelyn Hart, Averill Sehr, Joseph Bullerman, King Parker Carbonneau, Queen Elizabeth Wagner, Aubren Hoven, Emma Beyer, Anja Jarchow, Kira John, Allie Kracht, (back) Bella Oye, Jesse Aning, Camden Janiszski, Ross Bergman, Tyson Cowell, Gannon Ahrendt, Camden Hoven, Patrick Kroski, Brady Bork, Gavin Reisch, Tyler Hodge and Kamryn Van Batavia. Mavis Fodness photos/0929 LHS Coronation 2022

Wagner, Carbonneau crowned homecoming queen, king in Luverne

By Mavis Fodness

Luverne High School seniors Elizabeth Wagner and Parker Carbonneau are this year's homecoming queen and king at Luverne High School.

At Monday night's coronation in the performing arts center, the two were crowned from a royal court of 10 seniors.

The other queen candidates were Averill Sehr, Emma Beyer, Jocelyn Hart and Anja Jarchow.

King candidates were Tyson Cowell, Camden Hoven, Ross Bergman and Gannon Ahrendt.

Theme of this year's coronation was "Lights, Camera, Action."

Last year's homecoming queen, Brooklynn Ver Steeg presented Wagner and Carbonneau their respective crowns. Last year's homecoming king, Casey Sehr, was not at the event.

Class representatives included juniors Kira John and Patrick Kroski, sophomores Audrie DeBates and Jesse Aning, and freshmen Allie Kracht and Tyler Hodge.

Pages were Aubren Hoven and Joseph Bullerman.



Luverne High School 2022 Homecoming king and queen, Parker Carbonneau and Elizabeth Wagner

Seniors Bella Oye, Kamryn Van Batavia, Brady Bork and Gavin Reisch served as the coronation attendants.

Seniors Camden Janiszski and Christine Wagner were the master and mistress of ceremonies.



Left: Parker Carbonneau (center, with crown) reacts in disbelief to fellow king candidate Ross Bergman (right) after receiving the king's crown from 2021 LHS Homecoming Queen Brooklynn Ver Steeg at Monday's coronation in the performing arts center. To the left of Carbonneau is king candidate Camden Hoven. Right: Elizabeth Wagner (seated) reacts with a smile when Brooklynn Ver Steeg places the crown on her successor. Seated next to Wagner is queen candidate Anja Jarchow.



1943: Mrs. Charles Brauer's story continues

The following article is part of the Diamond Club Member group that began in the January 7, 1943, issue of the Rock County Star Herald. Members of this group consist of persons of age 75 and older.



BITS BY BETTY

By Betty Mann, president Rock County Historical Society

The following appeared in The Rock County Herald on May 6, 1943.

This is continued from last week's issue of Mrs. Charles Brauer's story.

After living there six years, the Brauers moved to Missouri, in a community south of St. Louis, where a man owned considerable land and employed men to help him, furnishing them with homes to live in. Mr. Brauer worked in the woods, splitting rails, receiving \$2 a day. Mrs. Brauer earned a little pin money by gathering dewberries and selling garden products to the families who worked in the mines.

Mr. Brauer became ill with malaria there, so they moved to Cedar county, Ia. There Mr. Brauer was employed as a railroad section worker for five years. However, he preferred working on the farm so they moved to Wilton, in Muscatine, Ia., where they obtained an 80 acre tract. They raised quite a few dairy cows, sold their milk, and were able to save some money.

From there, they moved to Rock county, and settled in Springwater township where they bought a farm and lived for 22 years. During those years, Mrs. Brauer states, she worked hard, taking the place of an extra man many times during the busy season. She helped with the chores, and even shocked grain.

About 25 years ago, they retired and moved to town. Mr. Brauer died about three years ago.

Mr. and Mrs. Brauer

had three children, only one of whom is now living, Mrs. Meta Weckner of Springwater township. Her other direct descendants include five grandchildren and six great grandchildren.

Mrs. Brauer is a member of St. John's Evangelical Lutheran church in Luverne and has always been active in the work of the Ladies Aid, although she has never held an office.

Her favorite pastimes include piecing quilts, gardening (in summer) and caring for house plants. She has numerous plants of all varieties, and she enjoys working with them and watching them grow.

She attributes her long life to living on common food, and keeping regular hours.

She is the only one of her family now living, she states, and she was the oldest of all of them. She had one brother and three sisters, and one half-brother and two half-sisters.

Donations to the Rock County Historical Society can be sent to the Rock County Historical Society, 312 E. Main Street, Luverne, MN 56156.

Mann welcomes correspondence sent to manmade@iw.net.

MENU AT GENERATIONS

Monday, Oct 3: Baked fish, au gratin potatoes, green beans, dinner roll, dessert.

Tuesday, Oct. 4: Meatloaf, corn, baked potato, bread, dessert.

Wednesday, Oct 5: Baked chicken, peas and carrots, mandarin oranges, rice pilaf, gelatin with whipped topping.

Thursday, Oct. 6: Sloppy Joe on a bun, romaine salad with dressing, seasoned pinto beans, warm peaches.

Friday, Oct. 7: Tur-

key stuffing casserole, California Normandy vegetables, warm apple slices, dessert.

LSS Dining offers well-balanced and affordable meals in a community atmosphere.

Call Lynette Hoiland at 283-9846, extension 11 to reserve one day prior, to arrange to pick up a dinner or for home-delivered meals.

Gift certificates are available at the meal site or online at www.lssmn.org/nutrition.

REMEMBER WHEN

10 years ago (2012)

Former Star Herald reporter Sara Schmuck found herself writing in familiar territory this month when she worked on a piece for Mining & Construction magazine.

It's a publication for the company, Atlas Copco, which is a world leader in the construction, mining and drilling industries, and Schmuck's most recent assignment put her in the Sioux quartzite quarry north of Luverne.

She wrote about (and photographed) a specialized piece of drilling equipment. ...She said the Rock County assignment stemmed from an observation by her father-in-law (Keith Schmuck), who was driving for Henning Construction. He noticed the drilling equipment being delivered to the quarry as he picked up a load of rock.

25 years ago (1997)

Following the recommendation of the Joint Law Committee, both the Luverne City Council and the Rock County Board approved the concept of combining the county sheriff's department and the city police department into one 11-person

law enforcement unit headed by the sheriff.

The final agreement with exact costs will be completed for their formal approval in October and will go into effect Jan. 1, 1998.

County/city attorney Don Klosterbuer presented the committee's decision to the two bodies at their respective meetings Monday and Tuesday. Klosterbuer said the committee vote was seven in favor, three opposed and one abstention.

50 years ago (1972)

Luverne Police estimated damage to two autos Tuesday in a city street crash which occurred 100 ft. west of Cedar St. at around 4:20 p.m.

A 1967 auto driven by Shirley Fodness, Hardwick, received an estimated \$125 damage and a 1965 auto driven by Vivian Hunt received about \$200 damage, according to the police.

No one was hurt.

75 years ago (1947)

C. W. Holden, who for little over a year has been assistant

cashier at the Luverne National Bank, left Tuesday for Rolla, N. Dak., where he will be cashier of the Rolette County Bank. His successor at the Luverne bank has not been named as yet, according to Harold L. Smith, executive officer of the local institution.

100 years ago (1922)

The formal opening of the Armory of Company H, Machine Gun, 5th Minnesota National Guards, will be held next Friday evening, October 6th, at eight o'clock, Governor J. A. O. Preus, Gen. Perry A. Harrison, Adjutant General Walter Rhinow, Colonel Walter F. Fulton, of the Fifth Regiment, Lieut.-Colonel Ivan Bowen, and other officers of the Fifth Regiment are expected to be present and participate in the ceremonies of the evening.

Company H. extends an invitation to the public to attend the evening's program. Gov. Preus, Adjutant Gen'l. Rhinow, General Perry Harrison, Col. Walter Fulson and Lieut. Col. Ivan Bowen are scheduled to address the audience, and talks will also be given by officers of Company H. Mrs. F. F. Michael will favor the audience with a vocal solo and several selections are to be rendered by the Luverne Concert band.

OBITUARIES

William Skewes

William "Bill" Frederick Skewes, 77, a 49-year resident of Evergreen, Colorado, died peacefully on September 11, 2022. His wife, Anne, was at his side at the family home.

Born on February 13, 1945, in Luverne, Minnesota, he is predeceased by his parents, Mortier Boulden Skewes and Mildred Gladys Skewes (nee Pettes).

Bill was a man dedicated to service above self, integrity, politics, and the law. Beginning in high school, Bill began to hone his leadership skills by becoming involved in many activities including being elected as the student body president and vice president of the Minnesota State Student Council Association. He graduated from the University of Minnesota in 1967 with a BA, cum laude, in history, political science and economics. His leadership continued by serving in the Student Senate and as an officer of the Chi Psi Fraternity. Following in his father's footsteps, Bill gradu-



ated from the University of Minnesota Law School in 1970.

Bill's legal career began as the Minnesota Special Assistant Attorney General for Taxation. He yearned to return to Colorado where his family had spent summers throughout his childhood. Thus in 1972, he joined the Denver law firm of Kelly Stansfield and O'Donnell, making partner in 1977. Bill left the firm as a senior partner in 1988 to begin a solo practice in Evergreen. He was admitted to practice law in the states of Minnesota and Colorado, before the federal courts in both states, before the Tenth Circuit Court of Appeals, the United States Tax Court, and the United States Supreme Court.

Bill's leadership was called upon as he served in many positions in the Colorado legal community, including as member of the Board of Directors and president of

the Colorado Association of Corporate Counsel.

Bill brought his talents in law and economics to bear as he served 32 years on the Board of Directors of Credo Petroleum Corporation, as well as its subsidiaries, United Oil Corporation (28 years) and Seco Energy Corporation (27 years). Working on Credo's Board was one of the highlights of Bill's career.

Upon moving his law practice to Evergreen, Bill became active in the community. His belief in giving back through service showed in his work with the local Center for the Arts, Chamber of Commerce, Bear Creek Rodeo Association, Evergreen Chorale, and the Evergreen Rotary Clubs. In 2001 when it became clear an evening Rotary club was needed, Bill helped found the Mountain Foothills Rotary Club and served as its charter president.

Bill's love of politics was demonstrated by his work as the chairman of the Jefferson Country Republican Party, and his work for 12 years as a personal adviser to the then

United States Senator Rudy Boschwitz (R-MN).

Bill was a third-generation Freemason. Bill's father and both grandfathers were Freemasons. Bill was also a York Rite Mason (Knights Templar), a 33rd Degree Scottish Rite Mason, and a member of the El Jebel Shriners. He was a member of four masonic lodges and was a past master at two lodges, Idaho Springs, and Central City. Bill was knighted in the Royal Order of Scotland on July 29, 2017.

While maintaining his practice and community service, one of the highlights of Bill's life was the time that was spent with his children skiing in Vail and Whistler-Blackcomb, exploring New York City and the spectacle of Broadway shows, enjoying the beaches of Hawaii, canoeing the Boundary Waters of Northern Minnesota, fly fishing, and most importantly, watching them grow from precocious children to remarkable adults with their own families.

Bill and his wife, Anne, spent many wonderful times

together skiing, scuba diving, enjoying the company of friends, and traveling around the world and the United States. Bill enjoyed his many times in France and Italy with Anne being his tour guide. Their 16 years of marriage were a blessing to both.

Everywhere Bill went, people immediately gravitated to him for his intellect, humor, compassion, and leadership. Bill was a fabulous father, friend, colleague, and community member. His professionalism and integrity made him an excellent lawyer and his philanthropic endeavors made Evergreen a better community. He will be greatly missed.

Bill is survived by his second wife, Anne Stucker Buzbee Skewes, his first wife, Kathleen Hogan of Evergreen, his sister, Mary S. Fisher of Greensboro, North Carolina, as well as three children, Michelle (Matt) Mason of Greensboro, N.C., Elizabeth B. (Dave Joyce) Skewes of Pueblo, Colorado, and Wiley Boulden (Karissa Underwood) Skewes of Denver, Colorado, and two grandchil-

dren, Ellen and Walter Joyce. The family wishes to express their deepest gratitude to the palliative care group and Mt. Evans Hospice who helped Bill throughout the summer.

A Celebration of Life will be held from 10 a.m. to 1 p.m. on October 22 at Hiwan Golf Club, 30671 Club House Lane, Evergreen, CO. A memorial service and reception will be held at 4 p.m. on October 22 at The Scottish Rite Masonic Center, 1370 Grant Street, Denver, CO 80203.

In lieu of flowers, donations may be made to Scottish Rite Masonic Center in the following ways:

1. Scottish Rite Masonic Center - Electronic Credit Card <https://centennial-lodge-of-perfection.square.site/>

2. Scottish Rite Masonic Center - Check by Mail Payee: Scottish Rite Masonic Center, 1370 Grant Street, Denver, CO 80203

Arrangements were provided by Horan & McConaty Funeral Home of Lakewood, Colorado, www.horancares.com.

(0929 V)

Alvin Boomgaarden

Alvin L. Boomgaarden, 1941. age 99, of Luverne, Minnesota, died Tuesday, September 20, 2022 at Sanford Luverne Medical Center.

Friends and family may greet the family on Sunday, September 25, from 4:00 - 7:00 p.m. at Hartquist Funeral Home in Luverne. Funeral service will be Monday, September 26, at 10:30 AM at the United Methodist Church in Luverne. Burial with full military honors will follow at Maplewood Cemetery in Luverne. To view Alvin's Life Tribute video or sign an online registry, please visit hartquistfuneral.com.

Alvin L. Boomgaarden of Luverne departed this life September 20, 2022, after a full and enjoyable 99-plus years. Born on January 15, 1923 in Lyon County, Iowa to Lewis and Tilla (Kruger) Boomgaarden, Alvin grew up primarily on his parents' farm just north of Magnolia. He attended Magnolia School, graduating with the class of



Thereafter he farmed in the area until drafted into the U.S. Navy for service in World War II in 1944. He served on the Naval destroyer Fred T. Berry, shipping out from Treasure Island, San Francisco Bay, as the war in the Pacific began to wind down. He served with the U.S. occupation forces in Japan and in China into 1946, the year of his discharge.

During the war, Alvin married Elaine Marian Arp of Luverne, and in the early post-war years they began their 65 years of marriage farming near Magnolia. They settled on and purchased a farm north of Magnolia, where they reared a family of sons.

Alvin was a well-liked and respected member of the community. He was active in membership and leadership of the Magnolia School Club, of the Magnolia School

District Board, and of VFW Post 2757 in Luverne.

He and his older brother Jake formed a high-school-sports referee partnership that officiated at football and basketball contests throughout Southwest Minnesota through the mid-1970s.

Alvin retired as an active farmer in the late 1980s and began to enjoy activities of his many grandchildren and great-grandchildren even until the end of his life.

He is predeceased by his parents; his wife Elaine; his brother Jake and sister Lois; an infant son Dale; and his fourth son, Jack.

He is survived by his sons, Randall A. (Joan) of Zumbrota, Minnesota, Wesley L. (LeAnn) of Columbus, Ohio, Jeffrey D. of Credit River, Minnesota; 10 grandchildren; and, at this writing, 17 great-grandchildren.

In lieu of flowers the family asks that donations be made to the Sanford Luverne Hospice Cottage, 217 N. Oakley Street, Luverne, MN 56156.

(0929 V)

Earl Von Holt

Earl Alvin von Holt, 87, Mankato, died Monday, Sept. 19, 2022, at Mayo Clinic Health System - St. Mary's Campus in Rochester.

A memorial service will be at 11 a.m. Thursday, Oct. 6, at Grace Lutheran Church in Mankato, with visitation two hours prior to the service. Burial will take place at 10:30 a.m. Tuesday, Oct. 18, at Fort Snelling National Cemetery in Minneapolis.

Memorials are preferred to Grace Lutheran Church, the American Legion, or to a charity of the donor's choice.

Earl von Holt was born on Aug. 24, 1935, to August and Elizabeth (Beine) von Holt in Luverne. He grew up on a farm near Magnolia and attended Magnolia Public School. He graduated in 1953 and spent the following two years helping his dad and brother, Ray, on the farm.

In 1955 he enlisted in the U.S. Air Force and served in the Strategic Air Command

for four years as an electronic technician on B47 bombers. He was discharged in August 1959.

On Sept. 20, 1959, Earl married Audrey Strassburg, and they began their new life in Minneapolis. Earl worked for Thomas

A. Edison Industries using his USAF training. The company became Wahl & Wahl and eventually Lanier Voicewriter. Earl and Audrey were blessed with a daughter, Lisa, and a son, Eric. In 1981 Earl was transferred to a one-man office in Mankato where he continued dictation sales and service for south central Minnesota until he retired to enjoy his flower and vegetable gardens, his yard and deck. He also enjoyed several part-time jobs and worked at Wis-Pac for several years.

Earl and Audrey started Volksmarching, non-competitive 10K walks, in 1984, becoming leaders of the Riverbend Striders in Mankato. They enjoyed

20 years of organizing area events and walking throughout the United States.

They also enjoyed meeting international students as part of the Friendship Family program at MSU. In 1991 Rizwan "Raz" Shah became a "second son." Raz married Amy and was blessed with two sons, and later, Raz's brother joined their international family.

Earl has been an active member of Grace Lutheran Church in Mankato and the North Mankato American Legion Post 518.

Earl is survived by his wife, Audrey; a daughter, Lisa; a son, Eric; international family, Raz, Amy, Zain, Amaan and Farhan; sister and brother-in-law Avis and Robert Fick; and sister-in-law Virginia von Holt.

He was preceded in death by his parents; a sister, Ruby; and brothers Raymond and Lester.

Arrangements are provided by Mankato Mortuary, www.mankatomortuary.com, and the service will be livestreamed at this site.

(0929 F)

Deborah Taubert

Deborah "Debbie" Taubert, 87, Beaver Creek, died Sunday, Sept. 18, 2022, at the Sanford Luverne Medical Center in Luverne.

A celebration of life will be at 11 a.m. Saturday, Oct. 1, at First Evangelical Free Church in Sioux Falls, South Dakota, with a private family burial in Pleasant View Cemetery, rural Luverne.

Deborah Lundberg was born May 12, 1935, to Roland and Margaret Lundberg in Arpin, Wisconsin. In 1949, when Debbie was 14 years old, her family moved to Tumwater, Washington. She graduated from high school in 1953.

She married Floren Taubert on Dec. 25, 1954. The couple moved across the country to Floren's family



farm in Beaver Creek. They raised six children in the farmhouse in which Floren was born.

Debbie spent her life as a mother, a Sunday school teacher, AWA-NA leader, and helped any children in need.

She loved her time with the children, and she enjoyed reading the Bible, spending time with Jesus in prayer, and journaling about her daily life. She liked playing board and card games, reading to her children and grandchildren, or putting together a puzzle. She loved attending her grandchildren's music and sporting events.

Debbie is survived by her children, Dave (Sharon) Taubert, Annette (Dan) Hill,

Gregg (Sharon) Taubert, Brianna (Debbie) Taubert, Brenda (Donn) Hill, and Brent (Jodi) Taubert; 34 grandchildren; and 33 great-grandchildren; and her siblings, Lois Fullington, Ruth Price, Rachel Olson, Nancy Yeske, Judy Petrezelka and Mark Lundberg.

Deborah was preceded in death by her husband, Floren Taubert; her parents, Roland and Margaret Lundberg; her stepmother, Rose Lundberg; her brothers, Keith Lundberg and Phil Lundberg; and one grandson, Ryan Taubert.

Memorials may be directed to the following: Taubert Family Living Trust, Pleasant View Cemetery, or the Gideons.

Arrangements were provided by Hartquist Funeral Home of Luverne, hartquistfuneral.com.

(0929 F)

Helen Lonneman

Helen Rose Lonneman, 88, Adrian, died Saturday, Sept. 24, 2022, at the Adrian Country Living Cottage.

A funeral Mass was Tuesday, Sept. 27, at St. Adrian Catholic Church in Adrian. Burial was in the St. Adrian Cemetery.

Helen Wieneke was born Jan. 17, 1934, to Cletus and Rose (Recker) Wieneke in Lismore. She graduated from St. Anthony Catholic High School in 1951. She was employed at Brentwood in Adrian.

Helen married Sylvester "Sy" Lonneman on Feb. 1, 1956, at St. Anthony. The couple began farming south of Adrian after their marriage.

Helen was a member of St. Adrian's Catholic Church, president of the Ladies Aid, taught religious education classes, and was a communion distributor to the shut-ins. She was a member of the Adrian Legion Auxiliary and

volunteered at the Adrian Nursing Home.

Helen was a successful fast-pitch softball pitcher and golfer. She and her husband took many fishing trips to Canada and throughout the United States. The couple attended numerous high school and collegiate athletic events involving their children and grandchildren. Helen enjoyed flower and vegetable gardening, crocheting, playing cards, and making quilts, many of which were donated. She was known for her homemade sweet bread during the Christmas season and her specialty pancakes.

Helen is survived by seven children, Mark (Lori) Lonneman of Adrian, Jerry (Connie) Lonneman of Adrian, Cindy Lonneman of Morris, Linda Lonneman (Terry Worth) of Sunrise Beach, Missouri, Kevin (Nancy) Lonneman of Montevideo, Ron (Leah) Lonneman of Adrian, and Allan (Valerie)

Lonneman of Sioux Falls; 14 grandchildren, Aaron Lonneman (fiancée Jesse Howhieler), Shaina (Tyler) Tycz, Kayla and Brady Lonneman; Tammy (Jon) Veld, Andrea (Erik) Kathman, Chad (Carrissa) Lonneman; Andrew (Kelsey) Lonneman; Mitchell Lonneman (fiancée Hannah Willson), and Bailey Lonneman; Chloe, Jacob and Dakota Lonneman; eight great-grandchildren; a brother, Alvin (Connie) Wieneke, Luverne; two brothers-in-law, Anthony Lonneman, Adrian, and Orville Lonneman, Sioux Falls; a sister-in-law, Susie Lonneman, Adrian; and many nieces and nephews.

She was preceded in death by her parents; her husband, Sy, in 2017, two sons, Dean and Tim; a sister, LaVone Wagner; and several brothers- and sisters-in-law.

Arrangements were provided by Dingmann Funeral Home of Adrian, dingmannandsons.com.

(0929 F)

DEATH NOTICE

Myrna Spease

Myrna Spease, 89, Luverne, died Saturday, June 25, 2022, at Benedictine Living Community in St. Peter.

A memorial service will be at 11 a.m. Saturday, Oct. 1, at the First Baptist Church in

Luverne. A time of fellowship will be one hour prior to the service Saturday.

Arrangements are provided by Dingmann Funeral Home of Luverne, dingmannandsons.com (0929 DN)

READ US ONLINE!
star-herald.com



Mavis Fodness photo/0929 Main Street Decorating 2022

It's starting to look a lot like fall

Luverne horticulturalist George Bonnema tapped Generations members to help with this year's annual decorating of Main Street with donated cornstalks. Volunteers included Dale and Patti Nelson, Marcene Hassebroek, Lowell and Shirley Harrison, Rodger and Dianne Ossenfort, Chuck and Barb Tweet, Corrine Bonnema and Ken and Phyllis Vos.

In the photo above at left, Dale Nelson (far right) carries cornstalks to the next light pole while Rodger Ossenfort straightens the decorative stalks into place. Above right, Ken and Phyllis Vos use twine to secure the cornstalks into place around a light pole.



At left, Bonnema ties ears of corn onto the decorative cornstalks Tuesday night, Sept. 20, around the light poles along Main Street Luverne.



Caring FOR YOU IN LUVERNE

At Sanford Health, we're committed to caring for you when you need it, where you need it. That's why we provide care close to where you live, work and play. Schedule an appointment with Rachelle VandeGriend to be seen for all medical concerns including:

- Well child exams
- Obstetrics
- Adult wellness exams
- Sports physicals and injuries

Call (507) 283-4476 to make an appointment at Sanford Luverne Clinic today.

SANFORD HEALTH

Rachelle VandeGriend, CNP

540-791-598 8/22

24/7 ... Rain or Shine ...

Your local, independent agent will be there.
Working for you - meeting your needs.

Buffalo Ridge INSURANCE

Auto-Owners INSURANCE

LIFE • HOME • CAR • BUSINESS

Marilyn Blomendaal, CPCU

Cory Blomendaal, CPCU

Steve Smedley, CIC

Salie Steen

South Hwy. 75, Luverne, MN
507-283-2381

Read Recycle Reuse

Call 507-283-2333 to advertise in the Star Herald

ROCK COUNTY

PHEASANTS forever

38th Annual Banquet
Thursday, October 6
at Big Top Tents & Events
321 W. Hatting St., Luverne, MN 56156

Crowing Time 5:30 - 7:00 p.m. | Meal 7:00 p.m.

Drawings • Raffles • Live Auction • Silent Auction

OVER 15 Guns to be given away!

- Pheasants Forever Membership/Dinner \$60
- Spouse Dinner \$25
- Youth Membership \$25
- Sponsor Member \$250

BANQUET TICKETS ON SALE NOW

Call Darin Kindt 507-920-7544 or Rick Peterson at 507-283-2333

Tickets also available at the Rock County Star Herald office.
Limited tickets will be available at the door.
Pre-paid tickets will be completed and ready at the door.

BUY YOUR TICKETS BEFORE OCTOBER 3 TO BE ENTERED IN THE EARLY BIRD DRAWING

\$20

On Sale Now!
Need not be present to win.

ROOSTER RAFFLE

Get your tickets from HB-C or Luverne Trap Team Members (or Darin or Rick).
Starting October 6, 2022, Ending December 30, 2022
12 Weekly \$200 Winners, Final Week one \$500 Winner
Sponsored by Rock County Pheasants Forever • Permit #X-67001
Winners listed on Star-Herald.com • Updated every Monday

Luverne
Electric Utilities

SIMULATED DISASTER TEST
Sunday, October 2 @ 7:00 p.m.

- **Short power outage**
- **All City of Luverne Residents and Businesses**
- **Generator test to simulate no electricity coming in to Luverne**
- **Civil defense sirens will sound when test is complete**

The City of Luverne Electric Utilities appreciates your patience as the test is required to commission the newly installed generators.
We apologize for the inconvenience.
Contact City Offices at 449-2388 with questions.



Renee Edmundson's second-grade class carries a homemade sign, "The Chargers are going down," Friday morning during the Hills-Beaver Creek School District annual homecoming parade through Hills. Following Edmundson's second-graders is the third-grade class. Samantha McGaffee photos/0929 H-BC Homecoming Parade 2022

Hills-Beaver Creek celebrates homecoming with Friday morning parade, afternoon volleyball



Above left: The Hills-Beaver Creek elementary and secondary student body cheers during a rare Friday afternoon volleyball game between the Patriots and Edgerton Dutchmen. **Above right:** The H-BC freshman class board a fifth-wheel flatbed for the parade route through the city of Hills. **Below left:** homecoming queen Taylor Huisman (left) and king Cody Moser are driven in a jeep by activities director Steve Wiertzema. **Below right:** The third-grade students of Halden Van Wyhe and Danielle Kneip walk in the homecoming parade holding various signs reading "Go H-BC" and "Disconnect the Chargers" for Friday night's football game against Westbrook-Walnut Grove. There was also a sign for the Patriots volleyball players, "Sink the Dutchmen."



Follow these tips for bringing 'outdoor' houseplants back indoors

We are in late September, and if you have had houseplants "vacationing" outdoors for the summer, I have a few tips to help them acclimate to their indoor location.



KNOW IT AND GROW IT

By George Bonnema, Luverne Horticulturalist

First, make sure there are not hitchhikers coming in with the plant. Insect pest populations are kept in check to a degree by outdoor weather and predator insects. That potential is eliminated indoors. Three primary pests to eliminate are aphids, white flies and red spider mites. All three of these insects feed on the sap of plants, and each has their favorite location and host plant. Aphids always feed

on the most tender new growth, so they will be on the tips of the stems and often cause distorted-shaped leaves. White fly larvae feed on the underside of the leaf and usually only the adult stage is noticeable as they fly around when the leaves are disturbed. Red spider mites usually start their attack on the underside of new, tender growth, and the first symptom is yellow speckling leaf color followed by webbing in the leaf and branch crotch. Amazingly, all three of

these pests can be controlled using one insecticide called neem oil. It is an organic product so it is safe to use indoors, but I would rather that you take your plant outside so you can do a thorough spray application. That means spraying both upper and lower leaf surfaces and being thorough is imperative if you want to eliminate the pests before they become a major issue. If you see the insects or there is evidence of them, I recommend two applications 10 days apart. Second factor is light. Outdoors, even in the shade,

daylight floods the plant from all sides. Indoors, light comes through the window from just one side. Add to that the much shorter length of daylight hours and factor in how many cloudy days we have in winter. Not surprising that often there is little growth during winter months. To help the plant get used to the light reduction, bring it in for a few days and then put it back outdoors when the weather permits for a few days. Do this for a couple of weeks and the plant will acclimate to its indoor environment without complaining. When I say complaining, I am referring to the only way a plant has to tell you that it's not happy and that means leaves turn yellow and fall off. The lower light means less energy for the plant, and with less

energy, it cannot support the amount of foliage it has, so it aborts leaves in an effort to survive. It cannot change its location so it will do what it can do to survive in that location. It depends on you to provide the best possible light indoors. Also, consider that plants that flower in the winter will have a higher light/energy requirement than foliage plants. Third consideration is water. Much like us, when we work hard and are growing rapidly, we need more nourishment and water. As the growth rate slows or even approaches dormancy, the plant will use less water and most certainly less fertilizer. The indoor environment will have lower humidity, which also plays into how much water will be required. I prefer a once-per-

week water regimen. Then you know what day to do it and you're less likely to stress the plant to the point of wilting or water-logged soil. If the soil still feels moist after a week, cut back on the quantity of water you are using. If the soil is very dry, give it more water per application. Check repeatedly for a few weeks until you find the correct amount for that plant. As to the use of plant food during winter, one application of water-soluble plant food per month will usually be adequate. If the plant roots are not using the fertilizer, it will build up as salt in the soil and can burn the roots. Bonnema is a gardening enthusiast and former greenhouse owner. He can be reached at flowergb@iw.net.



Samantha McGaffee photo/0929 H-BC Football

Junior Riley Tatge (No. 82) helps tackle a Westbrook-Walnut Grove Charger along with seniors Luke Fuerstenberg (No. 21) and Cody Moser (No. 75) during Friday night's H-BC Homecoming game in Hills. The Patriots downed W-WG 60-14.

Patriot football keeps record perfect

H-BC takes on 4-0 Renville County West Friday night

By Dan Ellingson
For the Star Herald

The Hills-Beaver Creek Patriots' football team has increased its record to 4-0 with a win over the Westbrook-Walnut Grove Chargers in the H-BC Homecoming game last Friday night at Patriot Field.

Next week will be the toughest test of the season for the Patriots as they travel to Renville County West to take on the 4-0 Jaguars.

The game will be a rematch of last year's state quarter-final game at Southwest Minnesota State University Mustang Field when the Patriots defeated RCW to move on to the state quarter-finals.

The 2022 clash of the undefeated teams will begin at 7 p.m. Friday, Sept. 30, in Danube

H-BC 60, WWG 14

After a scoreless first quarter, the Patriots found their offensive groove and thwarted the Chargers by a score of 60-14.

The Patriots' defense was stingy again this week, only giving up 77 total yards and zero points. The defense also scored on a pick six by senior Brayden Metzger while giving up zero points. Both Charger touchdowns were on returns, one punt and one kickoff.

Meanwhile the Patriots' offense racked up 54 points and 485 total yards, 448 of them through the rush.

The Patriots also dominated the time of possession, 29.5 minutes, compared to the Chargers only having the ball for 18.5 minutes.

The H-BC offense ran 56 plays compared to 38 for the visitors.

"The guys up front were able to control the line of scrimmage on both sides of the ball," said coach Rex Metzger, "and that was the difference in the game."

The Patriots exploded for 22 points in the second quarter, led by senior running back Justin Roelfs, who rushed for touchdowns of 44 and 32 yards. Quarterback Sawyer Bosch accounted for a touchdown, a run of two yards, and a pair of two-point conversions. Bosch rushed for one touchdown and passed for another to Jackson Gacke. WWG scored just before the half on a 79-yard punt return to make the score 22-8 at the half.

The Patriots added 24 points to the score in the third quarter. Bosch connected with junior Cooper Gehrke for 27 yards and a touchdown, followed by a successful Bosch to Riley Tatge two-point conversion pass. On the ensuing kickoff, WWG returned Jamin Metzger's kickoff 80 yards for their second return for a touchdown in the game. Justin Roelfs added to this touchdown total with a 5-yard burst, then added on the conversion with a successful run, extending the score to 38-14, in favor of the Patriots.

With the score at 38-14, Patriot

linebacker Brayden Metzger took an interception back to the house for a Patriots touchdown. Sophomore Beau Bakken tackled on the two-point conversion run, and the score stood at 46-14.

In the fourth quarter the Patriots scored two more touchdowns, one on a 10-yard run by Brock Harnack with a successful two-point conversion by freshman speedster Mason Shaffner, who then scored the last Patriots touchdown on a 4-yard run to end the scoring with 3:06 left in the game. Reserves on both sides saw a lot of action during the fourth quarter.

When asked about the keys to the homecoming victory, coach Metzger said, "We created some turnovers and gave ourselves good field position."

Team statistics

HBC: 458 rushing yards, 27 passing yards, 485 total yards, 23 first downs, 7 penalties for 70 yards, one turnover.

WWG: 20 rushing yards, 57 passing yards, 77 total yards, 4 penalties for 25 yards, four turnovers.

Individual statistics

Rushing: Justin Roelfs 25-232 yards, Beau Bakken 5-78 yards, Jamin Metzger 1-43 yards, Sawyer Bosch 8-32 yards, Cooper Gehrke 4-26 yards, Mason Shaffner 3-23 yards, James VandenBosch 4-14 yards.

Passing: Sawyer Bosch 1-5 for 27 yards. Receiving: Cooper Gehrke 1-27 Yards.

Defense: Justin Roelfs four tackles, Blake Leenderts four tackles, two TFL, Brayden Metzger three tackles, one TFL, one Interception, Luke Fuerstenberg 2.5 tackles, one TFL, Cole Rozeboom 1.5 TFL, Riley Tatge .5 TFL.

Cardinals fall to host New Ulm after taking lead into fourth quarter

By John Sichmeller
For the Star Herald

A promising start led to a disappointing finish for the Luverne Cardinals football team against New Ulm Friday night in New Ulm. The Cardinals took a 20-7 lead into halftime and led 26-14 after scoring early in the fourth quarter.

Unfortunately for the Cardinals, New Ulm scored 28 points in the final 8:18 of the game to secure a 42-32 victory.

The loss dropped the Luverne record to 2-2 on the season.

"It was a disappointing loss, but when you give up 28 points in the fourth quarter, you're not going to win very often," said Luverne coach Todd Oye.

"It was a combination of poor play on special teams, offense and defense."

The Luverne offense, which scored a season-best 36 points in a shortened game last week versus Windom, picked up right where it left off last week by scoring on the opening drive. Taking over at their own 41-yard line, the Cardinals utilized a nice third-down catch by running back Tyson Cowell from quarterback Conner Connell to keep their opening drive going.

Four plays later the Cardinals would get in the end zone after Connell squeezed a throw between two New Ulm defenders that found

senior wide receiver Gannon Ahrendt for a 29-yard Cardinal touchdown. After a failed 2-point conversion attempt, Luverne held a 6-0 lead with 5:54 remaining in the first quarter.

After a defensive stop, the Cardinals were not able to advance the ball on their next possession and were forced to punt. The Luverne punt attempt failed when the snap was dropped by the Cardinal punter, giving New Ulm excellent field position as they took over at the Luverne 31-yard line. New Ulm swiftly moved the ball down the field and scored their first points of the game when quarterback Ayden Jensen ran for three yards into the end zone. After a successful point after kick, the Eagles took a 7-6 lead with 2:10 to go in the first quarter.

New Ulm forced the Cardinals to punt on their next possession and the Eagle offense quickly moved the ball down to the 5-yard line. However, senior linebacker Riley Sneller came up with a key interception in the end zone to prevent the Eagles from scoring. The Cardinals kept the momentum going when Connell found wide receiver Gavin DeBeer on the left side of the field for a 70-yard touchdown catch. Sophomore quarterback Carter Sehr ran the ball into the end

LHS football, to 4B

Luverne volleyball suffers road losses

By Stacy Olson
For the Star Herald

The Luverne volleyball team took on Redwood Valley and Pipestone in the past week, dropping both games on the road to put their record at 10-5 for the season.

The Cardinals were scheduled to travel to Worthington Tuesday night to take on the Trojans, and they'll host St. James Area Thursday night and Jackson

County Central next Thursday.

LHS 1, Redwood Valley 3

Luverne played Redwood Valley on Tuesday, Sept. 20. Luverne dropped the first game by a score of 13-25.

The Cardinals made adjustments and came out to take Game 2 25-22, but they lost Game

LHS volleyball, to 4B

H-BC volleyball team takes first set win, still searching for first game win

By Joni Deelstra
For the Star Herald

The H-BC Patriots met four volleyball opponents last week but are still looking for their first win of the season.

H-BC plays at Edgerton Tuesday evening. These two teams met last Friday, and Edgerton topped H-BC 3-1.

H-BC 0, MLA-C 3

The Patriots fell to MLA-C in three sets Tuesday night. H-BC had a good night serving but continued to struggle with passing the ball.

Lanae Elbers played a solid game for the Patriots. She started out with a kill early in the first set to give them the edge early 2-1. Grace Abderson passed the ball to setter Brynn Rauk, who set Elbers up for another kill 6-4. Rauk added a point with a push to an open spot making it 8-6.

The score was tied at 17-17. An ace serve by Elbers kept the score close at 19-20 but MLA-C finished the set 19-25.

Layla Deelstra gave H-BC the first point in the second set with a kill to start 1-3. A pass by Elbers to Rauk, back to Elbers for the kill 2-3. A pass by Olivia Bork, to Bailey Spykerboer to set Rauk up for the kill brought the score to 5-14. Elbers scored off a block and Spykerboer added an ace serve before MLA-C finished the set 13-25.

In the third set, Larissa Steinhoff, Rauk and Elbers connected on a few plays to keep the score close 6-4. Aspen Shimp and Steinhoff both scored off kills to tie the score 17-17, but H-BC went on to lose 19-25.

Team statistics:

Brynn Rauk: 4 kills, 8 set assists, 12/12 serving with 1 ace serve, 4 digs
Olivia Bork: 12/14 serving



Samantha McGaffee photo/0929 H-BC Homecoming Parade 2022

Junior Lanae Elbers hits the ball back to the Edgerton Dutchmen Friday afternoon in a homecoming game played during the school day. Edgerton's sixth- through 12th-grade students and adults watch from the visitors' section, while H-BC's student body crowded the home section.

with 2 ace serves, 6 digs
Bailey Spykerboer: 6/8 serving with 1 ace serve, 5 set assists,

1 block
Larissa Steinhoff: 3 kills, 4/4 serving with 1 ace serve, 12 digs,

1 block
Lanae Elbers: 11 kills, 6/8 serving with 2 ace serves, 4 digs,

3 blocks

H-BC 0, RRC 3

The volleyball season is nearly half over and H-BC continues to battle for their first win. RRC was able to defeat the Patriots in three sets Thursday.

To start the game, Grace Anderson passed to Brynn Rauk to set Lanae Elbers up for the kill 1-1. Bailey Spykerboer added a point off an ace serve 4-8. Layla Deelstra got a kill followed by a push to the back corner to fall into an empty spot by Spykerboer to make it 9-13. A block by Elbers made it 14-18 but RRC took over the set to win 15-25.

A pass from Larissa Steinhoff, set by Deelstra, and kill by Elbers started out the second set. Rauk followed with an ace serve. Deelstra added a kill fol-

H-BC volleyball, to 3B

Tennis team comes off tough week with two losses

Luverne's eye on keeping Battle Racquet trophy for fifth-straight year

By Susan Beers
For the Star Herald

The Luverne Cardinals played two matches in the past week and went 0-2 to move their record to 10-4 on the season.

LHS started the week on Tuesday, Sept. 20, with a 0-7 loss to St. James and a 3-4 loss to Redwood Valley on Thursday, Sept. 22.

The Cardinals are scheduled to travel to Pipestone on Tuesday for a rescheduled match with the Arrows in the annual Battle Racquet Match.

LHS will start team section play on Tuesday, Oct. 4.

LHS 0, St. James 7

In the St. James match, LHS was not able to win one match for the day.

Roselynn Hartshorn was beaten 6-4, 6-4 by Eva Ronsdahl at No. 1 singles. Morgan Hadler lost to Keyana Haler 6-0, 6-0 at No. 2

singles. At No. 3 singles, Cassi Chesley lost to Maya Kulsteth 6-0, 6-4, and Emma Nath was beaten 6-3, 6-1 by Lily Ciske at No. 4 singles.

In doubles play, Sarah Stegenga and Katharine Kelm lost to Alexis Brekken and Allison Bledorn 6-1, 6-0 at No. 1 doubles.

Tori Hemme and Priscilla Muehr were defeated 6-3, 6-0 by Mykera Hanson and Dani Traper at No. 2 doubles, and Augusta Papik and Caitlin Kindt lost 6-3, 6-2 to Mariah Mireles and Mika Wessels at No. 3 doubles.

"St. James is the best team we have played this season. Roselynn played a very solid match but came up just short in both sets," said LHS coach Jon Beers.

"It is never fun to lose every match, but I was happy that the girls didn't give up and kept playing until



Images by CD photo/0929 LHS Tennis

Luverne's No. 1 doubles player Sarah Stegenga hits the ball back across the net in a tennis match against Redwood Valley at home Sept. 22. Stegenga and her partner, Katharine Kelm, lost to the Redwood Valley Cardinals. Next up for the Cardinals are the Pipestone Arrows.

the end of each match."

LHS 3, Redwood Valley 4

In the Redwood Valley match, LHS won two

singles matches and one doubles match in the 4-3 loss.

At No. 2 singles, Hadler defeated Lily Deblieck 6-0, 6-2. Chesley

won a close match 6-1, 5-7, 6-3 against Lauren Dolezal at No. 3 singles. Hartshorn lost 2-6, 6-2, 6-1 in a good three-set match to Brooke Zollner at No. 1 singles, and

Nath was beaten 6-2, 6-1 by McKenna Flinn at No. 4 singles.

The lone doubles victory came at No. 3 doubles as Papik and Kindt won 6-1, 6-7(2), 6-3 over Julian Brown and Michelle Smith.

Stegenga and Kelm lost 6-1, 3-6, 7-6 (5) to Mila Jenniges and Ella Stoneberg at No. 1 doubles, and Hemme and Muehr lost 7-5, 6-1 to Julia Lang and Anneliese Hammer at No. 2 doubles.

"The Redwood Valley match was a hard loss. We lost two three-set matches that if we could have found a way to win one would have given us a team victory," Beers said.

"Morgan played a really good match at No. 3 singles. It was really good to see her pick up a win and should give her some confidence going forward," said Beers.

"All the girls played better against Redwood Valley. Hopefully we can play like that against Pipestone on Tuesday and bring home the Battle Racquet for the fifth straight year."

H-BC volleyball/from page 2B

lowed by an ace serve to make the score 4-2. Elbers and Spykerboer were both able to get a block, but RRC would pull ahead 10-14. Elbers was able to add a couple more kills with assists by Spykerboer and Rauk to make it 15-18. Both teams had several missed serves and RRC went on to take the set 18-25.

H-BC was able to keep the lead most of the third set. Elbers and Steinhoff both scored off kills. Malli Ternus came into the game and had four serves in a row and the Patriots had a good lead 18-13. Steinhoff passed to Rauk to set Deelstra up for the kill to score 20-16. RRC was able to tie the score 23-23. Deelstra got a hit to get the lead back 24-23. The score tied again at 24-24 but H-BC would fall short again 24-26.

Team statistics:

Steinhoff: 5 kills, 5/5 serving, 6 digs
Deelstra: 5 kills, 8/10 serving with 1 ace, 5 digs
Elbers: 9 kills, 2 blocks, 6/7 serving with 1 ace
Rauk: 1 kill, 6/6 serving with 1 ace, 7 set assists, 7 digs
Spykerboer: 5 set assists, 2 kills, 3 digs, 1 block
Anderson: 7/7 serving, 9 digs
Bork: 8/8 serving with 2 aces, 9 digs

H-BC 1, Edgerton 3

H-BC and Edgerton took a new approach to a homecoming volleyball game this year. The game was played on Friday afternoon at 12:30 with H-BC's elementary and secondary students and Edgerton's secondary students present.

The bands from both schools sat together to play the national anthem. Both student bodies displayed school spirit with cheering and flag waving. A traveling trophy was awarded to the winning team to take back to display at their school.

"We wanted to give our volleyball team a homecoming experience they will never forget," said H-BC secondary principal Andrew Kellenberger.

"Having both student bodies in one gymnasium is going to give our teams that state competition crowd with a homecoming spirit feel."

The Patriots started the game with Layla Deelstra passing to setter Brynn Rauk to set Lanae Elbers up for the kill 1-0. Bailey Spykerboer added an ace serve 5-7. Deelstra, Larissa Steinhoff and Elbers all scored off kills, but Edgerton pulled ahead 9-19. Sam-



Setting up a bump is Hills-Beaver Creek junior Layla Deelstra as the Patriots took on the Edgerton Dutchmen in a Friday afternoon volleyball game in Hills. Samantha McGaffee photo

mons and Deelstra both added a kill before the set ended 12-25.

A pass from Grace Anderson to Rauk to set Steinhoff up for the kill got H-BC started 1-1. Deelstra and Spykerboer both added a kill 4-5. A point off a tip by Deelstra, followed by an ace serve from Olivia Bork, brought the score to 11-17. Elbers added a kill with an assist by Spykerboer 12-22. Edgerton won the second set 15-25.

Elbers played a strong third set. She started out the score 3-2 with a block and a kill, and an ace serve by Steinhoff brought the score to 5-2. A short pass by Elbers to Rauk and back to Elbers brought the score to 6-5. Edgerton was able to pull ahead before Spykerboer had a push to an open spot in the back corner to get the ball back 10-12. Steinhoff added a kill followed by two kills from Elbers to get the lead back 15-12. Edgerton made their way back to tie 23-23, but a couple of errors on their side gave the Patriots their first set win 25-23.

Edgerton was able to bounce back in the fourth set. Elbers started off with a kill and a block 2-5. An ace serve by Steinhoff made it 9-20. Elbers added another kill followed by two kills from Deelstra 12-22. A pass from Steinhoff to Spykerboer to set up Aspen Shimp was the last point for H-BC before Edgerton won 13-25.

Team statistics:

Elbers: 10 kills, 7/9 serving

with 1 ace, 2 blocks, 5 digs
Deelstra: 6 kills, 5/6 serving with 1 ace, 4 digs
Steinhoff: 5 kills, 8/8 serving with 2 aces
Bork: 7/9 serving with 1 ace, 6 digs
Anderson: 4/4 serving, 10 digs
Spykerboer: 4 kills, 10 set assists, 4 digs, 1 block
Rauk: 1 kill, 4/5 serving with 1 ace, 13 set assists, 7 digs

H-BC 0, St. Mary's 3

The Patriots crossed the border to take on St. Mary's in Dell Rapids, South Dakota, Monday night. St. Mary's had no problem shutting the Patriots out in three sets.

Lanae Elbers and Larissa Steinhoff both tallied a point off kills in the first set. The Patriots were not able to get much going after that and lost 25-6.

In the second set, Grace Anderson passed to Brynn Rauk to set Elbers up for a kill 0-2. The score was tied at 5-5. Steinhoff added two kills and Elbers scored off a tip over the net before the set ended 25-15.

St. Mary's came out with a big lead in the third set. Elbers passed to Bailey Spykerboer to set Layla Deelstra up for a kill 16-5. Spykerboer added an ace serve followed by a tip over the net by Deelstra to bring the score to 16-8. Both Steinhoff and Elbers added a kill before the set ended 25-13.

Fall turkey hunting opens soon

The Minnesota fall turkey hunting season offers hunters a challenge and another way to experience the outdoors in October. Fall turkey season is open from Saturday, Oct. 1, through Sunday, Oct. 30.

Hunters are allowed to take one turkey of either sex during the fall season. Fall turkey hunters may

use a crossbow, firearm or archery equipment afield; however, hunters who also are hunting deer with legal bows and arrows may only use a legal bow and arrows, not a crossbow.

Fall turkey licenses are available for purchase online, by telephone by calling 888-665-4236 or in person anywhere DNR

licenses are sold.

More information about fall turkey hunting is available on the DNR website: mndnr.gov/Hunting/Turkey.

Or contact James Burnham, hunting and angling recruitment, retention and reactivation coordinator, 651-259-5191.

GET BACK TO FEELING MORE LIKE YOU.

Completing the tasks of everyday life can be overwhelming after an illness or injury. When you're facing physical, occupational or speech challenges, Sanford Health can provide the extra support you need.

Our rehabilitation services can help treat conditions such as:

- Back and neck pain
- Delays in growth and development
- Effects of stroke
- Repetitive motion injuries
- Speech disorders
- Sports injuries

Call (507) 449-1229 to schedule an appointment with physical, occupational or speech therapy in Luverne.

Sanford Luverne Medical Center
1600 N. Kniss Ave.

SANFORD
HEALTH

997-820-444 2/22

**Interested in Advertising?
Call Rick! 283-2333**

LHS volleyball/from page 2B

3 20-25 and finished the night losing the fourth game 16-25.

Senior Emma Beyer led at the service line, completing 15 of 15 serves and recording one ace.

Senior Anja Jarchow also completed 11 of 11 services with two aces.

Jarchow had six kills on the night, and senior Kamryn Van Batavia also charted six kills.

Senior Christina Wagner contributed at the net with two solo blocks and three assists.

Senior Carly Olson recorded 12 digs for the Luverne Cardinals.

Senior setters Averill Sehr and Beyer recorded 10 and nine set assists respectively.



Photo courtesy of the Pipestone County Star

Kamryn Van Batavia attempts to tip the ball over the Pipestone Area defenders Thursday night, Sept. 22, in a volleyball game in Pipestone. The Arrows swept Luverne 3-0 in the match.

LHS o, Pipestone 3

Luverne stayed on the road for the next game on Thursday, Sept. 22, against the Pipestone Arrows.

Pipestone swept Luverne in three games with scores of 16-25, 18-25 and 17-25.

The Cardinals struggled and made adjustments but could not overpower the Arrows.

Carly Olson and Anja Jarchow led from the service line. Both seniors completed eight serves.

Jarchow also led the teams in kills, recording eight on the night.

Emma Beyer charted 13 set assists.

Olson charted eight digs and Van Batavia recorded seven digs in the three games.

At the net, junior Tori

Serie led with one block and three assists.

Senior Elizabeth Wagner also contributed to the Cardinals with four block assists.

LHS football/from page 2B

zone on the two-point conversion attempt, giving Luverne a 14-7 lead with 9:06 remaining in the second quarter.

The Cardinals' defense held strong on the next New Ulm possession, and Luverne took over on their own 20-yard line. The Cardinals put together one of their best drives of the game with good runs from Cowell and Connell and a 23-yard catch from Ahrendt. The Cardinals finished the drive with a Connell pitch to Ahrendt who then threw to junior receiver Elliot Domagala in the end zone for a 13-yard touchdown. The Cardinals were unsuccessful on their two-point conversion attempt and held a 20-7 lead with 37 seconds left in the second quarter.

New Ulm ran just two plays before time expired in the first half.

The Eagles scored the only points of the third quarter when running back Ty Frederick took a 17-yard run into the Cardinal end zone. After a successful point after kick, the Eagles trailed Luverne 20-14 with 2:37 to go in the third quarter.

Luverne was able to answer back on their next drive as they put together a six-play, 64-yard drive. Connell did most of the damage on the drive for the Cardinals as he registered a 47-yard run to get the ball deep in New Ulm territory. Connell finished out the drive with a 6-yard touchdown run. After an unsuccessful two-point conversion

attempt, the Cardinals led 26-14 with 11:54 to go in the game.

The Eagles bounced right back after the Luverne scoring drive with one of their own. Jensen was able to finish the drive with a 20-yard touchdown run with 8:18 to go in the fourth quarter. The New Ulm extra point was good and the score was now 26-21 in favor of Luverne.

The Cardinals were forced to punt on their next possession and the New Ulm offense continued to stay hot as they were able to move the ball quickly back into the Luverne end zone. Frederick finished off the drive with a 19-yard touchdown run for the Eagles. After an unsuccessful two-point conversion attempt, New Ulm now held the lead 27-26 with 5:14 to go in the fourth quarter.

Things continued to go downhill for the Cardinals on their next drive when Sehr's pass was intercepted by the Eagles. Just two plays later Frederick scored on a 13-yard run. New Ulm completed the two-point conversion and now held a 35-26 lead with 4:21 remaining in the game.

The Cardinals answered right back with a score of their own. Connell completed passes to Domagala and Ahrendt to get the Cardinals quickly

inside the New Ulm 20-yard line. Connell connected with Ahrendt for an 18-yard touchdown. After the extra point attempt was missed, the New Ulm lead was now 35-32 with 3:21 left in the fourth quarter.

New Ulm put the game out of reach on their next possession as Jensen completed a 35-yard touchdown pass with just 1:24 remaining in the game, giving New Ulm the lead at 42-32, the final score of the game.

Luverne's next game will be their homecoming game versus Worthington on Friday night at Cardinal Field. Kickoff is set for 7 p.m.

Team statistics:

Luverne: 113 rushing yards, 351 passing yards, 464 total yards, 18 first downs, 5 penalties for 30 yards, 1 turnover.

New Ulm: 179 rushing yards, 245 passing yards, 424 total yards, 18 first downs, 5 penalties for 50 yards, 1 turnover.

Individual Statistics:

Rushing: Tyson Cowell 17-71, Conner Connell 12-39 (1 TD)

Passing: Conner Connell 11-24, 267 yards (3 TD's), Carter Sehr 2-5, 71 yards, Gannon Ahrendt 1-1, 13 yards (1 TD).

Receiving: Gannon Ahrendt 7-157 (2 TD's), Gavin DeBeer 2-82 (1 TD), Conner Connell 2-47, Elliot Domagala 2-46 (1 TD), Tyson Cowell 1-19

Defense: Eli Woodley 7.5 tackles, Conner Connell 6 tackles, Patrick Kroski 5 tackles, Gavin Baum 5 tackles

Basic dog training tools are rather simple

In a recent edition of the Star Herald, I shared what the dog owner needs to be prepared to start a formal obedience training program. If you missed that column, try to look back and read that one first. If you can't find it, reach out to me and I will send it to you. It sets the proper foundation for the work you will begin today to start training your own dog.

The most basic of training tools and the ones all of my dogs start out their young lives with is a 4-foot, non-stretch leash and a slip chain collar. I don't use a retractable leash except for a few very special circumstances.

Every command you will ever give your dog in its entire lifetime will evolve around only three basic commands. They are "here," "sit" and "heel." Even the correction for digging in the flowers will be a version of one of these commands, and you will see the connection as we progress.

Every breed of dog is a descendent of wolves. I read that every dog breed from the biggest to the smallest evolved over the past 10,000 years. This history is why we use wolf pack mentality to train our dogs even yet today.

Let's start with "heel." Start out with the dog at your side on the leash, and as you step forward, give the heel command and then give the leash a fairly stout tug, at which point you repeat the command.

The three-step process of command, light correction, and the repeat of the command reminds them why they got the tug on the leash in the first place. The tug on the leash does not overwhelm the dog but is a correction nonetheless.

The definition of heel is not as finite as the other commands. A dog that is heeling in the proper position can be anywhere from about 12 inches ahead of you to about 12 inches behind you. Obviously the goal is to have the dog right next to you at your side.

As you walk all dogs, they will all have the tendency to pull on the leash to get out ahead of you. They do this because the leader of the pack is always out front. All dogs, no matter their size, will try to be the leader of your pack. This is a vital time to show the dog that you are the pack leader and not them.

The reason most dogs don't listen to their owners is they have not yet learned that the human is the pack leader. They consider themselves the leader.

If the dog pulls on the leash, then you repeat the command "heel" and give the leash a stronger pull while at the same time repeating the command. I always train that you use the



THE OUTDOORS

By Scott Rall
Outdoors columnist

least amount of correction possible to get the outcome you want, but you will need to be prepared to increase the level of correction until you get the compliance you demand.

Dog commands are not recommendations or requests. They are demands and the dog has to see them as such. Until they do, you will never be successful in having a dog that listens reliably.

You might need to use some pretty stout yanks on the leash initially, but they learn very quickly when you mean business and when you don't. This is why dogs often listen to one member of your family and not others.

Every human in the house has to occupy a place in the pack higher than the dog. They will challenge the pack hierarchy on a regular basis to see if they can move up in the order. This is why refresher obedience training needs to be a constant thing in the dog's life.

I have taken dogs that were 2-3 years old that would not go for a walk with their owners and in a period as short as 10 minutes, they will walk with me as though they have been doing it for their entire lives. They quickly learned I was the pack leader.

The slip chain collar will allow you much more control that a traditional web collar. Owners will tell me the dog pulls so hard they start to choke. This is mostly for show. I will set my feet and command heel and give a stronger snap on the leash. This will work. Again, these more substantial corrections normally only need to be completed a few times and the dog will soon get the message that you mean business.

Remember that when in a training session, use a strong, low, dominant voice. As you train, lean over the dog, looking down on it. This is a dominance posture, and the dog will understand more quickly where in the pack he belongs.

Getting a dog to heel reliably usually takes the average dog owner about one week.

SENIOR ATHLETES of the Week

Kaleb Hein

Sport: Football
Parents: Chris and Becky Hein
What I like most about Football: The team experience of working together towards a goal with your friends.
Other extracurricular activities/hobbies: Hockey and Peer Helping
Favorite Class: Statistics



Elizabeth Wagner

Sport: Volleyball
Parents: Matt and Jill Wagner
What I like most about Volleyball: I love playing with my teammates and how the community comes together to support us!
Other extracurricular activities/hobbies: Basketball and track
Favorite Class: Spanish

Camden Hoven

Sport: Cross Country
Parents: Perry and Stephanie Hoven
What I like most about Cross Country: Running during the fall with my teammates and friends.
Other extracurricular activities/hobbies: Golf, Choir, Student Council, Peer Helping, Spring Play and Math League.
Favorite Class: Science



Carly Olson

Sport: Volleyball
Parents: JJ and Stacy Olson
What I like most about Volleyball: Just being with the team.
Other extracurricular activities/hobbies: Softball
Favorite Class: Biology

833-314-1217

BOGO 40% OFF

ENDS 11/30

RENEWAL by ANDERSEN
FULL-SERVICE WINDOW & DOOR REPLACEMENT

DEADLINE FOR CLASSIFIEDS IS THURSDAY @ 10:00AM

VISIT CAMPUS

- ▲ OCTOBER 7, 2022**
Campus Visit Day
- ▲ NOVEMBER 4, 2022**
Campus Visit Day
- ▲ DECEMBER 14, 2022**
Career Exploration Event

SOUTHEAST Technical College
605-367-6040 | admissions@southeasttech.edu
SOUTHEASTTECH.EDU/VISIT

Sunshine Gas
North Highway 75, Luverne
(507) 283-4889

Godfather's Pizza Express
(507) 449-0335

St. Catherine Catholic Church

203 E. Brown St., Luverne
St. Catherine Ph. 283-8502; www.stscl.org
Monsignor Gerald Kosse, Pastor

Sundays 8:30 a.m. Mass. Public Mass will be celebrated at FULL capacity in the church. Masses: 9 a.m. Wednesdays, 10 a.m. Friday at the nursing homes – check the bulletin. All Sunday masses will be live streamed on Facebook at <https://www.facebook.com/pg/stccluverne/videos/>. Visit www.stscl.org for more information.

Luverne Christian Reformed Church

605 N. Estey St., Luverne
Office Ph. 283-8482; Prayer Line Ph. 449-5982
www.luverneccrc.com — office@luverneccrc.com

Sundays 9:30 a.m. Worship service. 6:30 p.m. Evening worship service. We are streaming Sunday services live on YouTube at 9:30 a.m. and 6:30 p.m. Send him a friend request if you're not connected. You may also visit our website for delayed broadcasts. Also our services are on local cable TV at 5:30 p.m. on Wednesdays and at 6:30 p.m. on Thursdays. In all circumstances, may we joyfully declare: "Our help is in the name of the Lord, the Maker of heaven and earth." Psalm 124:8.

First Baptist Church

103 N. Jackson St., P.O. Box 975, Luverne
Ph. 283-4091; email: fbcluv@iw.net — www.fbcluverne.org
Walt Moser, Pastor

Sundays, 10:30 a.m. In-person worship service. Service is also on Facebook Live at 10:30 a.m.

Grace Lutheran Church

500 N. Kniss Ave., Luverne
Ph. 507-283-4431; www.graceluverne.org — graceluverne@iw.net
Dave Christenson, Interim Pastor

Thursday, Sept. 29: 8:30 a.m. Missions in Action. Sunday, Oct. 2: 9 a.m. Worship Service with Holy Communion and Blessing of the Quilts. 10 a.m. Sunday School. 10 a.m. Drums and Jesus. 10:15 a.m. Tenth Grade Confirmation class. 6:30 p.m. Transitional Task Force meeting. Tuesday, Oct. 4: 9 a.m. Staff meeting. Wednesday, Oct. 5: 7 a.m. Men's Bible Study. 1 p.m. Priscilla/Elizabeth Circle meeting. 6:15-7:25 p.m. Confirmation class for 6th grade. 7:30-8:40 p.m. Confirmation class for 7th grade. Online, TV and Radio Worship options are available. Online worship: Sundays 9 a.m. at www.graceluverne.org, click Worship tab; or Facebook page at Grace Lutheran ELCA, Luverne. TV: Vast Channel 3 Mondays at 4:30 p.m. and Fridays at 10 a.m. Radio: KQAD-AM Radio Sundays at 8:15 a.m.

Bethany Lutheran Church

720 N. Kniss Ave., Luverne
Ph. 507-283-4571 or 605-215-9834
Andrew Palmquist, Pastor

Sundays, 10:15 a.m. Worship service; worship online as well (at els.org). Tuesdays, 6:30 p.m. Zoom Bible study. See our Facebook page, Bethany Lutheran Church (Luverne) for other classes and events.

American Reformed Church

304 N. Fairview Dr., Luverne
Ph. 507-283-8600; email: office@arcluverne.org

Friday, Sept. 30: 6:30 a.m. Community Men's Bible study. Sunday, Oct. 2: 9:30 a.m. World Communion Sunday — Worship Service. 10:50 a.m. Sunday School. Wednesday, Oct. 5: 5:30 p.m. Midweek Meal. 6:30 p.m. Pioneer Clubs and youth groups. 6:30 p.m. Connections meeting. 8:15 p.m. Cantata rehearsal. Thursday, Oct. 6: 9 a.m. Cookie Crew. Services are also broadcast on Vast Channel 3 on Mondays at 6 p.m. and Wednesdays at 4 p.m. DVD's available upon request. To stay up to date on announcements, follow us on Facebook and Instagram @arcluverne.

Rock River Community Church

1075 110th Ave., Luverne
Ph. 507-283-9070; email: info@rockrivercommunity.church
Bob Junak, Pastor

Come as you are—Sundays @ 10 a.m.: Main Service. Kids church age 3-6th grade—Nursery. Wednesdays @ 6:30 p.m. Midweek Service—Kids age 3-6th grade.

United Methodist Church

109 N. Freeman Ave., Luverne
Ph. 283-4529

Saturday, Oct. 1: 8 p.m. AA meeting. Sunday, Oct. 2: 9 a.m. Adult Sunday school; coffee hour. 10:30 a.m. Worship Service. 4:30 p.m. Genesis/Revelation Bible Study. Wednesday, Oct. 5: 6:15 p.m. FUEL. 6:30 p.m. Confirmation. 8 p.m. AA meeting. Live streamed on Facebook and radio.

First Presbyterian Church

302 Central Lane, Luverne
Ph. 283-4787; email: Firstpc@iw.net

Sunday, Oct. 2: 9 a.m. Adult Sunday school. 10:15 a.m. Worship service. Youth Sunday school during worship service. In-person Worship service and live on Facebook. Our Facebook page can be found under First Presbyterian Church of Luverne. We are also on the local Luverne cable station at 10 a.m. and 6 p.m. on Tuesdays and 10 a.m. on Thursdays.

St. John Lutheran Church

803 N. Cedar St., Luverne
Ph. 283-2316; email: stjohn@iw.net
www.stjohnlutheranluverne.org

Saturday, Oct. 1: 5:30 p.m. Worship Service. Sunday, Oct. 2: 9 a.m. Worship Service. 10:15 a.m. Sunday School; Adult Bible Study. Monday, Oct. 3: 1 p.m. Quilters met. 2 p.m. Parkinson's Supper. Wednesday, Oct. 5: 9:30 a.m. Bible Study. 6:30 p.m. Catechesis; Kids for Christ. 7:30 p.m. Youth Group. Services will be available on the Vast Channel 3 Sunday and online at the city website, cityofluverne.org.

Living Rock Church

500 E. Main St., Luverne
Ph. 449-0057; www.livingrockswmn.org
Josh Hayden, Pastor

New Life Celebration Church
101 W. Maple, Luverne
Ph. (605) 368-1924; email: newlifecelebration@gmail.com
Food mission every third Thursday.

Zion Evangelical Lutheran Church

305 E. 2nd St., P.O. Box 36, Hardwick
Ph. (507) 669-2855; zionoffice@alliancecom.net
Jesse Baker, Pastor

Sunday, Oct. 2: 9 a.m. Worship service. 10:15 a.m. Sunday School. 10:30 a.m. Bible study. Worship service on Luverne cable at 3:30 p.m. every Thursday and Friday.

Ben Clare United Methodist Church

26762 Ben Clare Ave., Valley Springs, S.D.
igtwb@WOW.net
Bill Bates, Pastor

First Lutheran Church

300 Maple St., Valley Springs, S.D.
Ph. (605) 757-6662 — firstpalisade@alliancecom.net
Mark Eliason, Pastor

Sunday, Oct. 2: 9:30 a.m. Sunday School. 10:30 a.m. Worship Service with Holy Communion. We Are ONLINE! Facebook: @FirstLutheranValley Springs; YouTube: FirstPalisadeLutheranParish.

Palisade Lutheran Church

211 121st St., Garretson, S.D.
Ph. (507) 597-6257 — palisadechurch@alliancecom.net
www.palisadelutheran.org
Mark Eliason, Pastor

Sunday, Oct. 2: 9 a.m. Worship Service with Holy Communion. 10 a.m. Sunday School. We Are ONLINE! Facebook: @PalisadeLC; YouTube: FirstPalisadeLutheranParish. Wednesday, Oct. 5: 9 a.m. Anyone interested in quilting can join the ladies weekly in October at Palisade Lutheran Church. Everyone is welcome! No experience necessary!

First Presbyterian Church

201 S. 3rd St., P.O. Box 73, Beaver Creek
Ph. 507-935-5025

email: lori.firstpres@gmail.com

Sundays, 9:30 a.m. Worship Service. Second Tuesday of each month, 7 p.m. Session meeting.

Magnolia United Methodist Church

501 E. Luverne St., Magnolia
Ph. 605-215-3429

email: magnoliannumc@gmail.com
Nancy Manning, Pastor

Sunday, 9 a.m., in-person with livestream available on the church's Facebook site.

Steen Reformed Church

112 W. Church Ave., Steen
Ph. 855-2336

Jeremy Wiersema, Pastor

Sunday, 9:30 a.m. and 6 p.m. Worship service in-person with livestream available on Facebook and YouTube. Radio worship on KQAD Sundays at 9:30 a.m.

Bethlehem Lutheran Church

112 N. Main St., Hills
Ph. 962-3270 / bethlehemofhills@gmail.com

Nita Parker, Pastor

Sunday, Oct. 2: 9 a.m. Worship at Tuff Chapel. 9 a.m. Sunday school. 10 a.m. Worship Service. Worship will be streamed live to Facebook at Bethlehem of Hills. You can find more info on our website blhills.org.

Hills United Reformed Church

410 S. Central Ave., Hills
Office Ph. 962-3254

hillsurc@alliancecom.net
Alan Camarigg, Pastor

Is it okay to disagree?

Does everyone you know have to think like you think and like what you like? Is it okay for people to agree to disagree?

I have found in life that I don't always agree with everyone. Maybe you have noticed that, too.

When we don't agree, can we still get along?

Every day people make choices. Does that mean I have to hate the people that make choices I don't like? I hope not. It would seem that I would end up hating everyone I know. Everyone I know has made choices that I don't like.

We live in a world surrounded by imperfect people. And we can't expect more out of them than we can deliver ourselves.

The point is, we have to figure out how to get along in spite of the choices that people make that we don't like. It is okay to disagree with someone and still value them.

God has given us permission to bear with one another. Colossians 3:23 says, "Bear with each other and forgive one another if any of you has a grievance against someone. Forgive as the Lord forgave you."

In other words, God is encouraging us to see value in each other beyond the present moment. All people, whether we think they are right or not, were created by God and are loved by God. This means that all of us are valued in God's eyes even if we don't know that or believe it.

So God is calling us to learn to get along. He wants us to

BUILT ON A ROCK

By Pastor Jeremy Wiersema, The Reformed Church of Steen

Every day people make choices. Does that mean I have to hate the people that make choices I don't like? I hope not. It would seem that I would end up hating everyone I know. Everyone I know has made choices that I don't like.

care about each other even when we disagree. There is more to a person than their ideas or opinions. So we must seek out those things in each other instead of focusing on the things that irritate us.

These weekly church page messages are contributed to God's Work through the Church and by these concerned and responsible citizens & businesses:

Call Rick to place your ad!

283-2333

Read us online!

Rock County
STAR HERALD
www.Star-Herald.com

Trust in Him



Papik MOTORS
283-9171
PAPIK.COM
Luverne • Rock Rapids • Sibley

HSS HILLS STAINLESS STEEL & EQUIPMENT CO., INC.
506 W. Koehn, P.O. Box 987, Luverne, MN
PHONE 507-283-4405
Church is Important - Please Attend!

Buffalo Ridge INSURANCE
507-283-2381
www.buffaloridgains.com E-mail: info@buffaloridgains.com

McClure Electric
Alan M. Aanenson, owner
Farm, Home & Commercial Wiring
Luverne, MN Phone 507-283-4716

TUFF MEMORIAL HOME
A HOME WITH A HEART!
Hills, MN • 507-962-3275

MINNWEST BANK
116 East Main Street • Luverne • 507-283-2366
Hwy. 75 • 800 South Kniss • Luverne • 507-283-9131
www.minnwestbank.com • Member FDIC • MoneyLine 888-616 BANK

Advertise Here

SECURITY SAVINGS BANK
bankwithssb.com 507.449.6000
Member FDIC Luverne, MN

HARTQUIST
Funeral and Cremation Services
Pipestone • Luverne • Lake Benton • Jasper • Tyler
www.HartquistFuneral.com

Pizza Ranch
110 E Main, Luverne 507-283-2379

CWG Business Insurance.
Tri-State Region Period!

MANLEY TIRE & OIL SERVICE
Manley Minnesota
1-800-615-3704
Open six days a week • Closed on Sundays
To God be the Glory.

Luverne ANNOUNCER

First Farmers & Merchants
We believe in you.
Member FDIC. And the community.
303 E. Main, Luverne, MN
507-283-4463 | www.ffmbank.com

...continued from previous page

Notice regarding Baumgard estate

STATE OF MINNESOTA
COUNTY OF ROCK

FIFTH JUDICIAL DISTRICT
DISTRICT COURT
PROBATE DIVISION

Estate of
Steven Kyle Baumgard,
Deceased

Court File No. 67-PR-22-222

NOTICE OF INFORMAL APPOINTMENT OF PERSONAL REPRESENTATIVE AND NOTICE TO CREDITORS (INTESTATE)

Notice is given that an application for informal appointment of personal representative has been filed with the Registrar. No will has been presented for probate. The application has been granted.

Notice is also given that the Registrar has informally appointed David Baumgard, whose address is 338 Jesse James Lane, Mahtomedi, Minnesota, 55115, as personal representative of the Estate of the Decedent. Any heir or other interested person may be entitled to appointment as personal representative or may object to the appointment of the personal representative. Unless objections are filed with the Court (pursuant to Minnesota Statutes section 524.3-607) and the Court otherwise orders, the personal representative has full power to administer the Estate including, after 30 days from the date of issuance of letters, the power to sell, encumber, lease or distribute real estate.

Any objections to the appointment of the Personal Representative must be filed with this Court and will be heard by the Court after the filing of an appropriate petition and proper notice of hearing.

Notice is also given that (subject to Minnesota Statutes section 524.3-801) all creditors having claims against the Estate are required to present the claims to the personal representative or to the Court Administrator within four months after the date of this Notice or the claims will be barred.

Dated: Sept. 13, 2022

/s/ Terry S. Vajrt
District Court Judge

Attorney for Personal Representative

/s/ Natalie Reisch

Jeffrey L. Haubrich
Klosterbuer & Haubrich, LLP
120 N. McKenzie
Luverne, MN 56156
Attorney License No: 0300020
Telephone: 507-283-9111
FAX: 507-283-9113
Email: jhaubrich@klawmn.com

Court Administrator

(09-29, 10-06)

Rock County Commissioners meet Aug. 2

Herreid Board Room
Rock County Courthouse

9:00 A.M.
Aug. 2, 2022

The meeting was called to order by the Vice Chair Thompson with Commissioners Overgaard and Williamson present and Commissioners Burger and Reisch absent. Also in attendance were Administrator Kyle Oldre, County Attorney Jeff Haubrich and Star-Herald Reporter Mavis Fodness.

The Pledge of Allegiance was recited by those in attendance. Motion by Williamson, seconded by Overgaard, to approve the August 02, 2022, County Board agenda, declared carried on a voice vote.

Motion by Overgaard, seconded by Williamson, to approve the July 19, 2022, County Board minutes, declared carried on a voice vote.

Eric Hartman, Land Management Office Director presented a conditional use permit for an expansion of an existing feedlot located in the NW 1/4 of Section 33 of Mound Township for Derek, Brad, Austin and Jacob Van Santen; on a recommendation for the Planning & Zoning Board, motion Overgaard, seconded by Williamson, to approve the conditional use permit with conditions identified on the permit, declared carried on a voice vote.

Hartman presented a Preliminary Plat of a proposed subdivision identified as Prairie Ridge Estates located in Section 12 of Luverne Township, on property owned by Dean and Jennifer Tofteland. Motion by Williamson, seconded by Thompson, to approve the Preliminary Plat, declared carried on a 2-0 vote with Commissioner Overgaard abstaining.

Ashley Kurtz, Auditor/Treasurer presented the claims; motion by Overgaard, seconded by Williamson, to approve, declared carried on a unanimous vote. A complete listing the claims is available at the Auditor/Treasurer's office. **AUGUST 2, 2022 CLAIMS OVER \$2,000**

| | |
|---------------------------------------|--------------|
| A & B BUSINESS INC | \$2,795.74 |
| BREMIK MATERIALS, INC | 5,877.16 |
| CONVERGINT TECHNOLOGIES LLC | 21,483.91 |
| ENVIRONMENTAL DUST CONTROL OF MIDWEST | 4,276.20 |
| FLEET SERVICES DIVISION-ADMIN FMR | 7,091.68 |
| JARDINE LOGAN & O'BRIEN P.L.L.P. | 2,162.80 |
| JOHNSON CONTROLS | 24,725.00 |
| LUVERNE BODY SHOP INC | 5,679.60 |
| LUVERNE/CITY OF | 9,375.00 |
| VIKING ELECTRIC LLC | 3,212.62 |
| WIDSETH SMITH NOLTING & ASSOC, INC | 3,376.00 |
| 48 PAYMENTS LESS THAN \$2,000 | 17,947.50 |
| TOTAL | \$108,003.21 |

The County Board was in receipt of the Fund Balance report; motion by Williamson, seconded by Overgaard, to approve, declared carried on a voice vote.

The Administrator presented an update regarding the Preliminary Damage Assessment report from damages that occurred from the July 5, 2022, excessive rain event. The assessment reports identifies (3) applicants with damages totaling \$84,350.00. Motion by Overgaard, seconded by Williamson, to accept state assistance for the July 5, 2022, disaster declaration, declared carried on a voice vote.

Board was updated on Congressionally Directed Spending that two projects regionally have been selected to move forward. 1.) Luverne Daycare for \$2.6 million and 2.) Lewis and Clark water system expansion for \$12 million. No action was taken.

Board was reminded of the upcoming road and bridge tour for the 16th of August and to let the administrator know if they had sites they would like toured.

The County Board was informed of the resignation of Aaron Blank, Team Lead/Dispatcher at the Rock County Sheriff's office; the County Board accepted the resignation with regret and authorized filling the vacant position.

Commissioner Williamson stated that he attended the following meetings: thanked the Fair Board, 4-H and Extension Office for a successful fair and also thanked the community and businesses for supporting the fair.

Commissioner Thompson stated that she attended the following meetings: Library, Southwest Health & Human Services and the County Fair.

Commissioner Overgaard stated that he attended the following meetings: Rural Energy Board, (2) Planning & Zoning, Farm Family of the Year Recognition, County Economic Development Authority and also congratulated the fair board for a successful fair.

Commissioner Burger stated that he attended the following meetings: n/a

Commissioner Reisch stated that he attended the following meetings: n/a

With no further business to come before the County Board, the meeting was declared adjourned by order of the vice chair.

(09-29)

Star Herald CLASSIFIEDS

CARDS OF THANKS

I wish to thank everyone who came to help celebrate my birthday; those who helped prepare for it in any way, and for the cards, gifts and phone calls I received.

God bless you all and thanks again!

Ferd Tilstra
(9.24-9.29)

Whoever put my picture in the paper? Thanks a lot for reminding me of exactly how old I really am.

Robert Fick
(9.29-10.1)

Thank you to everyone who reached out with cards, texts, food and flowers. I had a great birthday celebrated with family.

Thanks again,
Bev Viessman
(9.29-10.1)

MOVING SALE

Moving sale in Luverne: Various household and collectible items. Lots of glasses, place mats, tablecloths, etc. Call for appointment to view: 828-606-2678. Ends 10/7/2022 (9.29-10.1)

EMPLOYMENT

RENTALS

Apartment for Rent - One bedroom main level apartment. NO pets, NO smoking. Call 507-283-9720. (rtc)

House for Rent - Three bedroom home in Ellsworth for rent. \$650 - No pets, no smoking. Owner pays sewer, water and garbage. Call 507-360-3245. (9.29-10.15)

MISCELLANEOUS

HAVE A UNIQUE SERVICE OR BUSINESS? Get the word out to over 1.4 million households. Call WIDE AREA CLASSIFIEDS today, 507-359-7326. (tc)

EMPLOYMENT

Help Wanted: Person to drive a pickup. Full or part-time. Must have a valid driver's license. Call 507-370-1590. (9.10-9.29)

RECYCLE!

RECYCLE!

RECYCLE!

EMPLOYMENT

EMPLOYMENT

Help Wanted

Wild Rose Home Care LLC is looking for a part-time **Personal Care Attendant (PCA)** in Luverne.

Part-time hours 5-10 hours a week and every other weekend working with a female client. Must be able to pass a background check.

Qualified individuals must be dependable and reliable.

WILD Rose Call for application
507-337-1101

EMPLOYMENT

EMPLOYMENT

EMPLOYMENT

WildRose Home Care LLC

is looking for part-time **Homemakers**

in the Worthington and Adrian Areas. 5-10 hours per week. Must be able to pass a background check. This is a new position, qualified individuals must be dependable and reliable.

Call for application
507-337-1101

WILD Rose



Help Wanted

- **Part-time Day & Night Cook** - Will train applicant.
- **Part-time Activities Staff** - Experience with LTC residents preferred.
- **Full-time Housekeeping/ Laundry Staff** - Will train applicant.
- **Full-time and Part-time Certified Nurse Aide (CNA)** - PM Shift
- **Full-time Certified Nurse Aide (CNA)** - Night Shift

New Wage effective immediately!

CNA Positions start out at \$20.00 plus credit for experience and shift differential (PM differential - \$3, Night differential - \$5)

All shifts require every other weekend shifts.

All positions are eligible for PERA retirement. All Full-time positions (30+ hours per week) are eligible for Blue Cross - Blue Shield, Health Insurance.

Send resume to: Suzanne Lenz, 308 Sherman Ave. W. Ellsworth, MN 56129
Email: slenz@frontier.com | Phone: 507-967-2482

HELP WANTED Full-Time Customer Service Representative in Luverne, MN

Security Savings Bank is looking for a Full-Time Customer Service Representative for our Security Savings Bank in Luverne.

Applicants should submit an application/resume via the website bankwithssb.com/about/careers

or apply in person, ask for Ryan or Sheryl for details - 507-449-6000.

Submitting an employment application does not guarantee an interview. Applicants are evaluated based on work history, job skills, credit report, background check and other job-related factors. All compensation and benefit programs are administered in compliance with state and federal law.

Security Savings Bank is an Equal Opportunity Employer and all qualified applicants will receive consideration for employment without regard to race, color, religion, sex (including pregnancy, gender identity, sexual preference or orientation), national origin, age, disability, and marital or veteran status.

SECURITY SAVINGS BANK

Member
FDIC

Join our GROWING Team! In Luverne, MN

Feed Truck Driver/Mill Operator

- \$19/hr+ with experience
- Coordinate with mill manager feed delivery
- Follow biosecurity guidelines
- Ensure timely and accurate feed delivery
- Current CDL license is required

Friendly atmosphere with great team unity.
Great Benefits - fully paid single medical insurance.

Go to www.pipestone.com for a complete job description.
Call 507.825.2532 with questions.

PIPESTONE
Nutrition

NOW HIRING Quality Assurance/Technical Services Manager

GENERAL SUMMARY

Manages Premium Minnesota Pork in all aspects of quality assurance, food safety, and animal welfare activities. Has direct oversight of the management of the Quality Assurance department and carrying out all duties and responsibilities of the department.

EDUCATION and / or EXPERIENCE

Bachelor's degree from college or university preferred; or 3 to 5 years related experience and/or training related to QA Management and/or supervision; or equivalent combination of education and experience.

LANGUAGE SKILLS

Ability to read and interpret documents such as safety rules, operating and maintenance instructions, and procedure manuals. Ability to write routine reports and correspondence. Ability to speak effectively before groups of customers or employees of organization. Knowledge of Microsoft Office programs such as Word, Excel, and PowerPoint are required.

Please send resume to: stephanie@premiumiowapork.com

PREMIUM IOWA PORK, LLC
HOSPERS, IA | LUVERNE, MN

1174 Co Hwy 4 Luverne, MN 56156 507-449-7660



NOW HIRING!

LICENSED DENTAL ASSISTANT
CNA/STERILIZATION PERSON
PATIENT CARE COORDINATOR
NEW CLINIC IN PIPESTONE MN

CARING HANDS DENTAL CLINIC OF PIPESTONE IS CURRENTLY SEEKING to hire a **LDA, a PCC and a CNA/Sterilization person.**

Training available. This new 6 operatory facility serves all patients of all ages, with most insurances, providing our award winning dental care and education. Come join our fast-paced comprehensive professional dental team. Very **competitive wages and benefits** including vacation, weather/sick/PT days, matching 3% IRA, 50% health insurance subsidy, paid CE, paid license, paid dues, paid BLS training, furnished scrubs, family dental care, Star of the North support, and a comfortable family friendly working atmosphere in a very modern office. Caring Hands desires applicants that are professional, ethical and truly care for people. Hourly wage, no commission, no selling. **Wage based on experience. We offer a signing bonus for these positions.**

Please submit your questions or resume to Stacy Schueller, LDA, RF, Clinic Manager, via email to stacy@caringhandsdc.org. Come join a great team of caring professionals.

Visit our website to learn more about our great organization that cares about the patients, the staff and their families. www.caringhandsdentalclinic.com

Lennox, George-Little Rock take People's Choice Awards at Tri-State

Saturday's 71st annual event draws 23 bands, good weather

Class A Parade:
First Place: Murray County Central High School
Second place: Garretson High School

Class AA Parade:
First Place: Sioux Falls Christian High School
Second Place: West Central High School

Class AA Field:
First Place: West Central High School.
Second Place: Lennox High School

Outstanding Wind:
West Central High School

Outstanding Percussion:
West Central High School

Outstanding Auxiliary:
West Central High School

Outstanding Drum Major:
West Central High School

Class AAA Parade:
First Place: Tea High School
Second Place: Stewartville High School

Class AAA Field:
First Place: Brookings High School
Second Place: O'Gorman High School

Outstanding Wind:
Brookings High School

Outstanding Percussion:
Brookings High School

Outstanding Auxiliary:
Sioux Falls O'Gorman

Outstanding Drum Major:
Sioux Falls O'Gorman

Class AAAA Parade:
First Place: Worthington High School



Images by CD photos/0929 Tri-State Band 2022

Luverne High School marching band members perform their 2022 field show called "Haunted" at Saturday's 71st annual Tri-State Band Festival. **Below center:** Harrisburg High School performs in front of the home stands during the afternoon field competition that involved 10 bands.

Second Place: Sioux Falls Roosevelt High School.

Class AAAA Field:
First Place: Brandon Valley High School

Outstanding Wind:
Brandon Valley High School

Outstanding Percussion:
Brandon Valley High School

Outstanding Auxiliary:
Brandon Valley High School

Outstanding Drum Major:
Brandon Valley High School

K.M. Getman Award:
West Central High School

Parade Sweepstakes:
Worthington High School

Field Sweepstakes:



Below: The Sioux Falls Roosevelt High School color guard takes centerstage during their field performance. The judges placed Roosevelt's performance second behind Brandon Valley High School. **Below left:** The Luverne Middle School marching band leads the 15 participating bands down Luverne's Main Street.



Brandon Valley High School
People's Choice Parade:
George-Little Rock

High School
People's Choice Field:
Lennox High School



Star Herald CLASSIFIEDS

EMPLOYMENT EMPLOYMENT EMPLOYMENT



Rock County STAR HERALD — Help Wanted — SPORTS REPORTER

The **Rock County Star Herald** in Luverne, Minnesota, is looking for the right person to help navigate the fast-paced world of **community sports reporting**. Our weekly award-winning newspaper covers two local districts and their high school sports teams, along with community outdoors and recreational activities. We're working to enhance our daily presence with social media posts, sports column/blog and occasional streamed coverage with athletes, coaches and fans. Our vision is to be on the local scene of whatever sports-related news is happening — whenever and wherever it occurs — and share that experience with sports fans to read and watch on social media and to enjoy in print and online pages. **If you share the same vision of a local sports news presence, and if you're passionate about sports with the ability to write about it and share it with others, you may be the person we're looking for.** We're accepting applications now for this **full-time position**. Sports reporting and photography experience is preferred, along with some knowledge of InDesign, PhotoShop and social media platforms.

Email cover letter, resume and work samples to Rick Peterson, general manager, at rick@star-herald.com.



MCAN

Minnesota Classified Advertising Network



| | | |
|---|---|--|
| <p>BUSINESS FOR SALE REPUTABLE CLEANING SERVICE Company for sale in beautiful Crow Wing County. Includes client list. Income \$60,000+ annually. Serious inquiries only. Please leave a message 218/866-0362</p> | <p>FARM EQUIPMENT OWN RURAL LAND? Earn \$5,000+ every year from hunting leases. Upfront payments from our hunters. Reduce risk with free \$5M liability insurance. Call for a free quote 888/871-1982</p> | <p>MISCELLANEOUS DONATE YOUR CAR truck or boat to Heritage For The Blind. Free 3-day vacation, tax deductible, free towing, all paperwork taken care of 844/220-9501</p> |
| <p>WANTED TO BUY WANTED: ALL 1970S MOTORCYCLES Running or not. Titled or not. Cash in exchange. Sell now while prices are high! Call Dan at 612/720-2142</p> | <p>MISCELLANEOUS DIRECTV STREAM Carries the most local MLB Games! CHOICE Package, \$89.99/mo. for 12 months. Stream on 20 devices in your home at once. HBO Max included for 3 mos. (w/CHOICE Package or higher.) No annual contract, no hidden fees! Some restrictions apply. Call IVS 855/803-9309</p> | <p>THE GENERAC PWRCELL a solar plus battery storage system. Save money, reduce your reliance on the grid, prepare for power outages and power your home. Full installation services available. \$0 Down financing option. Request a free, no obligation quote today. Call 888/913-5895</p> |
| <p>BUYING AND SELLING silver bars, silver dollars, rare coins, gold coins, gold jewelry, collector coins. No collection too big. Kuehl's Coins, Fairmont, Minnesota 507/235-3886</p> | <p>DISH NETWORK \$64.99 for 190 Channels! Blazing fast internet, \$19.99/mo. (where available.) Switch & get a FREE \$100 Visa gift card. FREE voice remote. FREE HD DVR. FREE streaming on ALL devices. Call today! 855/562-4309</p> | <p>SAFE STEP North America's #1 Walk-In Tub. Comprehensive lifetime warranty. Top-of-the-line installation and service. Now featuring our FREE shower package and \$1600 off for a limited time! Call today! Financing available. Call Safe Step 855/440-8982</p> |

LOCAL. DIGITAL. ADVERTISING.
Advertise YOUR business on 55" digital screens in 12 locations!
For more information contact: **170,000 monthly impressions!**
Rick Peterson
507-290-0924 • bluemounddigital@gmail.com
Wyatt VanSteenberg
507-220-1994 • wyatt.bluemounddigital@gmail.com
507-283-2333 (Star Herald)