



Rock County STAR HERALD

Rock County's oldest business, printing since 1873

Thursday, March 9, 2023

Veterans banners coming to Main Street

By Lori Sorenson

Luverne's Main Street light pole banners featuring high school graduates will come down this summer at the end of June, and they'll be replaced by banners honoring local veterans.

That's according to the Design Committee of Luverne Initiatives For Tomorrow which recently announced the new banner opportunity to honor the service of past and current veterans.

"Beginning in 2020, parents and supporters have purchased banners honoring graduating seniors on Main Street in Luverne," said Jane Lanphere of the Luverne Chamber, which is coordinating the effort.

"This year the banner sponsors have asked that the senior banners be returned to them by the end of June."

At that point, she said, the LIFT Design Committee was tasked with providing ideas as to what kind of banners should be put up after the student banners are removed.

"The committee has decided that Luverne should replace those banners with banners of Rock County service members," Lanphere said.

"Over the past four months, this project has been developed that allows veterans, families and friends to honor current and past service members by purchasing banners that will be placed on the light poles on Main Street from July 1 through the end of the banner season in mid- to late October."

One side of the banner will display a photo and name and information of the veteran. The other side of the banner will say, "Thank You for Your Service."

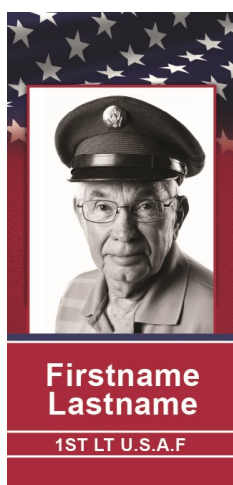
Banners will be returned to purchasers in the fall when they come down.

There are 82 locations for banners in Luverne, and if there are more banners purchased than there are poles to display them, a drawing will determine which banners are assigned.

The cost of the banner is \$120. That fee will be refunded for applications not drawn for a banner, in the event that there are more than 82 requests.

To qualify for the Veterans Banner Program, honorees must be present or past (honorably discharged) members of the United States Armed Forces, and they

Veterans banners/see page 2



Mavis Fodness photos/0309 Princess Gala 2023

Princess for a day

LHS teens play dress-up with elementary and preschool girls

Members of Luverne High School FCCLA (Family, Career and Community Leaders of America) chapter made 32 preschool and elementary students feel like princesses Feb. 28 during the group's annual "Princess Gala" fundraiser conducted in the Luverne Elementary School commons.

The participants were encouraged to dress as their favorite princess with some of the FCCLA members helping with fingernails, makeup, hair braiding and other princess special effects.

"We hope that the participants are able to just feel very special for the night," said adviser Carmen Thompson. "They get to be pampered by the high school girls and feel pretty with their dresses, crowns and getting their nails and hair done."

Organized through Luverne Community Education, the Princess Gala is in its second year. The event provides money for FCCLA members to attend the state convention and fund projects.

Above right, sisters Amelia (left) and Audrey LeBrun dress as princesses Belle and Ariel.

At right, Nora Louwagie (right) applies eyeshadow on first-grader McKinlee Gillette.

Below, from left, are Ingrid Sandager, Madilyn Lysne and Adalynn Sparks



Recent blizzard extends classes in Luverne by two days

By Mavis Fodness

The Luverne School Board added two additional days to the school calendar to compensate for two days district officials called off classes due to blizzard conditions in February.

Students will now have class on Thursday, May 25, and Friday, May 26. The current school year was previously set to end Wednesday, May 24.

Superintendent Craig Of-

tedahhl presented the calendar change to the School Board on Feb. 27.

He said the two extra days would bring the total student-contact days back to the state-mandated 168 days. The school-ending date of May 26 is not unusual for the district.

"That Friday has been our typical release day for the past several years so it won't be out of the norm," Oftedahhl said.

Board members unanimously approved adding the May 25 and 26 class days.

Graduation for the Class of 2023 remains as scheduled Sunday, May 28.

Next year's school calendar

The Luverne School Board also adopted the 2023-24 school calendar at the Feb. 27 meeting.

Students will begin the new school year after Labor Day on

Tuesday, Sept. 5. The last day of school is Wednesday, May 22.

May 23 and 24, 2024, are designated as snow days.

Graduation for the Class of 2024 is Sunday, May 26.

Holidays and breaks are:

- MEA, Oct. 19-20.
- Thanksgiving, Nov. 22-24.
- Christmas, Dec. 22-Jan. 3.
- President's Day, Feb. 16 and 19.
- Easter, March 29 and April 1.

Springwater Township valuations to increase by 65 percent

By Lori Sorenson

Property owners will soon receive valuation notices showing what the Rock County Land Records Office has determined their property's estimated market value to be as of Jan. 2, 2023.

That figure will be used to calculate the 2024 taxes for the property.

According to Rock County Assessor Rachel Jacobs, most farmland in Rock County has increased in value, because land sale amounts have increased.

Rock County's land values are increasing on average 25 percent.

But in Springwater Township, she said she's alerting local officials that property values are set to increase by as much as 65 percent, and she's attempting to explain why.

Typically, she said local townships have only a few land sales in a year, but Springwater Township had 11 land sales in her assessment period of October of 2021 through September of 2022.

Of those 11 sales, six went for \$13,000 per acre or more, and four went for over \$15,000 per acre. One 40-acre parcel sold for over \$17,000 per acre.

"That's high," Jacobs said. "These are some of the highest sales I've seen since working in this office."

She said in a typical year, there might be three land sales in a township over \$10,000 per acre.

"In Springwater I have only one that's below \$10,000 per acre," she said.

"It puts into pretty good perspective what people have been willing to pay for land in Springwater Township."

She said the 11 sales were mostly auction sales between local sellers and buyers, not foreign investors.

By statute, estimated market value must be between 90 per-

Land valuations/see page 5

"It puts into pretty good perspective what people have been willing to pay for land in Springwater Township."

— Rachel Jacobs, assessor



COMMUNITY CALENDAR

Meetings

Beaver Creek Township Board will meet at 2:30 p.m. Tuesday, March 14, in the Township Hall. The annual meeting will follow at 4 p.m.

Parkinsons Support Group will meet at 2 p.m. Thursday, March 16, in Poplar Creek, Luverne. All are welcome. Call 507-935-8173 with questions.

'Crafty Canines' at park March 11

Meet from 1 to 2 p.m. Saturday, March 11, in the Picnic Shelter at the Blue Mounds State Park for a program on "Crafty Canines."

Coyotes, foxes, and wolves are all members of the canine family, and the naturalist will share information about the tricks these clever critters use to survive and serve as a valuable link in the food chain. Program will conclude with some crafty projects to take home. All ages welcome. Call 507-283-6050 for details.

BQA training March 21

Minnesota Extension and Minnesota Beef Council will offer a free online Beef Quality Assurance (BQA) training from 7 to 8:30 p.m. Tuesday, March 21, for producers to receive their three-year BQA certification. Register at z.umn.edu/BQAMarch21 to receive the Zoom link. Call 320-533-4655 with questions. Anyone can complete the online BQA training at www.bqa.org at any time.

Make county 'dementia friendly'

Dementia Friends Minnesota will offer a free event at 12:15 p.m. Wednesday, March 15, at Generations in Luverne to share information about dementia — how to recognize signs of dementia — in order to better interact with caregivers and people living with dementia. Register with Linda Wenzel, 507-238-5064.

Child's Remembrance Garden Wine Tasting, Dinner March 25

A Wine Tasting and Dinner benefiting the Child's Remembrance Garden will be at 6:30 p.m. Saturday, March 25, at Big Top Tents and Events, Luverne. A cash bar is available for those not drinking wine.

Purchase tickets by March 22 at Blue Mound Liquor or by calling 507-449-5052. See childremembrancegarden.org or the group's Facebook.

A photo table will honor children who have gone too soon. To share a photo contact Mary Thompson, 507-920-6226.

'Amphibians and Reptiles' at Blue Mounds March 25

Meet from 10 to 11 a.m. Saturday, March 25, in the Picnic Shelter at the Blue Mounds State Park for a program on "Amphibians and Reptiles."

Learn which amphibians and reptiles you can find in the park and explore the life cycle of these animals to discover how they give clues about the health of an ecosystem. Call 507-283-6050 for details.

Mobile dental clinic March 30

The mobile dental clinic will be in Luverne Thursday, March 30, in the Rock County Health and Human Services community room.

This clinic, organized by #Luv1LuvAll's Rock County Oral Health Task Force, provides dental care for adults and children ages 0 to over 100. Call 612-746-1530 to schedule an appointment. All forms of insurance are accepted.

Tree trimming and pruning help

Project Food Forest is offering to help with any and all tree trimming for trees less than 10 years old. The local organization will provide one-on-one guidance in the process, specifically tailored to individual trees. To schedule a service, email mickey@projectfoodforest.org or call 605-215-1051. The service is available through March 31, weather permitting.



Local skaters take first place in Polar Blast

The Blue Mound Figure Skaters captured first place as a team at the Prairie Polar Blast in Brookings, South Dakota, last weekend. The 29 local skaters represented the club in competition with three other clubs at the event. Pictured are (front, from left) Noel Henrichs, Aliyah Tiesler, Nevaeh DeBoer, Addison Wieneke, Kelsey Baker, Lydia Jarchow, Audrina Tiesler, Afton Nuffer, Aubrey Nuffer, Kallista Van Grootheest, (second row) Brianna Sowles, Grace Kempema, Ellianna Kopp, Ella Sprock, Mya Akin, Katherine Kelm, Emma Schneekloth, Josalyn Hiebert, Autumn DeCesare, Braelinn Papik, (third row) Grace Schneekloth, Lillian Palmquist, Hannah Kempema, Reese Henning, Madilyn Wenzel and Augusta Papik. Not pictured are Haidynn Kingery, Olivia Schneekloth and Emary Zwaan. Coming up, four local skaters will represent the Blue Mound Figure Skaters in the BOLD challenge in Minneapolis this weekend, and the Annual Ice Show is March 17 and 18 in Luverne. (Submitted photo)

Star Herald and Announcer designer earns first place in regional contest

Rock County Star Herald and Announcer production manager Heather Johnson earned a first-place award from the Midwest Free Community Papers Association.

She was recognized for an advertisement she created to promote use of the Midwest Classified Network.

Johnson's ad was chosen from 15 finalists submitted by designers from three states.

The judging was handled by a team of independent judges with experience in ad design.

According to MFCP, the judges were drawn to Johnson's compelling design and her crisp, clear copy writing.

Johnson has been a leading creative designer with the Announcer and Star Herald since 2017.

— BE THE AD THAT GETS —

RIPPED

— FROM THE PAPER —

ONE CALL, ONE CHECK
WE get the word out for YOU!

MIDWEST CLASSIFIEDS NETWORK

Reach a combined circulation of over
1.9 MILLION

or target your ad with four zones to choose from.

CALL YOUR LOCAL NEWSPAPER AD REP OR REACH OUT TO MFCP TODAY!

888-899-MFCP (6327)
 MFCP.org
 director@mfcp.org

MY PAPER
29160 Hell Hollow Road | Richland Center WI 53681 | 888-899-6327

Veterans banners/ from page 1A

must be current, former or deceased residents in Rock County (or have ties to Rock County).

Applicants must be the honorees themselves or be close living relatives or associates of the honorees.

Applications will be accepted now through May 1 at the Luverne Area Chamber Office, 507-283-4061, or online at luvernechamber.com.

Paper applications need to include a 5-by-7 image or larger. Digital applications need images with a resolution of 300 dpi or larger.

Lanphere said she hopes enough applications come in to fill all the light poles in Luverne.

"The banners act as symbols of our gratitude and pay tribute to the commitment and courage displayed by individuals who have served in the Armed Forces," she said.

"Let's thank the brave men and women from Rock County who have served with a banner."

Winter load increases end in south seasonal load limit zones

The Minnesota Department of Transportation announced an end to winter load increases in the south, southeast and metro zones on Monday, March 6.

MnDOT will continue to evaluate weather forecasts to determine the start date for spring load restrictions in these zones.

Ending dates for spring load restrictions are vari-

able and based on how weather is affecting roadway strength.

MnDOT will report start and end dates on its 24-hour automated message center at 1-800-723-6543 for the U.S. and Canada

For questions about legal axle weight or Gross Vehicle Weight Schedule, call the Minnesota De-

partment of Public Safety, State Patrol — Commercial Vehicle Enforcement at 651-350-2000

For questions about oversized/overweight loads/permitting call the Minnesota Department of Transportation Freight and Commercial Vehicle Operations — Oversize/Overweight Permits at 651-296-6000 or email: ofcvopermits.dot@state.mn.us

state.mn.us

All changes are made with a minimum three calendar-day notice.

For the most current information, go to MnDOT's automated 24-hour message center at 800-723-6543 for the U.S. and Canada. This information is also published on the MnDOT seasonal load limits website at mndot.gov/loadlimits.

#TellUsTuesday Results

Scan Here to Vote for this Week's Survey!

How did you spend last week??	%
Clearing snow	6%
Watching TV	25%
Working like usual	19%
Dreaming of someplace warm	50%

Dial-a-Specialist

Your One Stop Guide to Local Businesses

DR. MICHAEL SMITH

ROCK COUNTY
REC
 CHIROPRACTIC

Laser Therapy • Custom Orthotics
 Men, Women & Children's Health
 Athletic Care • Massage Therapy
 Work & Auto Injuries • Postural Restoration

www.rockcountychiropractic.com
 283-2561 • 103 E. MAIN, LUVERNE

• Chiropractic

Viking Electric LLC

Tim Gangestad
 Owner

(507) 290-2595

Conquering all of your electrical needs!
 Residential • Commercial • Agricultural

• Electrician

Luverne

MINNESOTA City
 Love the life! Offices

PO Box 659, Luverne, MN 56156
 507-449-2388 (24 hour voice mail)

www.cityofluverne.org

• City

LUVERNE HEALTH & WELLNESS

Codie Zantenhorst, DC
 LuverneChiro.com

Chiropractic
 Acupuncture
 Massage
 Auto, Work, and Sports Injuries

109 S Freeman Ave Luverne, MN
507.449.4400

• Chiropractic

City permits Sno-Masters trail for riders in town

By Lori Sorenson

Luverne City Council members approved a 2023 snowmobile trail permit in response to residents' complaints earlier this year that snowmobilers were traveling on private property.

The council and the Rock County Sno-Masters Snowmobile Club agreed on a route that snowmobilers can use in town to reach their approved trail system outside of city limits.

Club trail master Greg Vande Velde attended the Feb. 28 City Council meeting to answer questions.

He said the route is similar to the routes that have been used in the past, with a few changes as the trail system was developed.

The city first adopted an ordinance for the Sno-Masters map in 1970, and it's supposed to be permitted regularly for snowmobilers in city limits.

But when there hasn't been snow, the requests haven't been made, and VandeVelde said new riders haven't been up to speed on the trail in town and about trail etiquette.

"I can't police everyone," he said.

"But I do all the signing of the in-town route myself, so I'll make sure that it's marked better so people can stay on the trails better."

Council member Dan Nath had received complaints from residents in his district about snowmobilers trespassing, and he raised the discussion at a previous meeting.

"I think it really wound up being an education more than any-

thing," he said Tuesday. "We just haven't had snow, and we've got a lot of younger riders and they just needed to be made aware."

VandeVelde said he would raise awareness among his members and through social media.

"We need to stay on the trail and respect private property," he said. "You need to have permission, and if you don't, you're trespassing."

He also said he'd educate new riders through the snowmobile safety courses that 12-year-olds take through the Sno-Masters.

Students register through Community Education and take online courses.

The driving course is conducted by the Sno-Masters at their clubhouse in town.

VandeVelde said he appreciated the council's cooperation.

"If you get complaints, please let me know," he said.

"I'm willing to help any way we can if there's a problem. We need to be able to keep the trail in town. It might just take a little education."

Caroline Thorson, mayor pro-tem, said the council also appreciates the Sno-Masters' willingness to work with the council.

"We live in Minnesota and we want to enjoy our winter recreation," she said.

"And so I appreciate the fact that we're able to work together to keep that for our residents."

The total cost of the parking lot improvements at Prairie Loft is \$332,740.50

Airport runway to get new pavement

By Lori Sorenson

The Luverne City Council is seeking bids for paving the Luverne airport runway, according to action at their Tuesday, Feb. 28, meeting.

The project includes asphalt pavement surface treatments, crack repairs, and pavement markings at the Luverne Municipal Airport.

"This is preserving your biggest asset out there, the runway," said Brian Meyer of DGR Engineering.

"We're using your available funds to patch that up and get a new surface on it."

The city will apply for an FAA grant to perform pavement surface treatment and crack repairs on the entire airfield pavements.

The project is estimated at \$477,000, with the local share of 5 percent estimated at \$23,850.

The work is part of normal maintenance and it's been part of the five-year improvement plan, according to council member Kevin Aaker, who serves on the Airport Board.

"We keep it maintained so that we don't have to tear it up and rebuild it," he said.

At Tuesday's meeting, the council approved the specifications and authorized the advertisement for bids

for the Luverne Airport paving project.

The bid date is set for March 22 at 11 a.m.

The contractor will have 15 consecutive calendar days once work is started later this construction season, with a completion deadline of Oct. 13.

Work will not be permitted between July 15 and Aug. 26 because of crop spraying and the airport's annual fly-in celebration.

City improves Prairie Loft parking lot

In other business Tuesday, the Luverne City Council approved a final payment of \$81,924 to Hulstein Excavating for improvements to the parking lot at Prairie Loft Apartments.

The city worked with the developer (GreenSmith Luverne Holdings, LLC), to build two 27-unit apartments for workforce housing.

The city and GreenSmith have a development agreement for the 54 apartments.

The developer is financing the apartment complex that will carry a minimum assessment of \$8 million.

The city's tax increment financing fund will pay for the parking lot, and the new taxes generated by the apartment building will pay off the TIF debt.



Puzzling

Twenty-two teams, many of them generational family members and Rock County Big Buddies pairs, competed in the Generations Puzzle Tournament Saturday in the Generations Event Center. (Lori Sorenson photos)

Generations hosts 22 teams for puzzle tournament

By Lori Sorenson

Competition was intense Saturday morning at the Generations Puzzle Tournament in Luverne where 22 different teams raced against time to complete their puzzles ahead of other puzzle fixers.

Winners in the 300-piece category of adults and youth teams were Heather Roberts and Summer Mollberg with a time of 36 min.

Winners of the 300-piece category of two team members were Zoe Harnack and Brianna Biber with a time of 38 minutes.

Winners of the 500-piece category with two or three team members were Gina Graff, Wyatt Graff and Jodi Fuerstenberg.

Organizers noted that 12 teams were comprised of adults and youth, and nine of them were from the Rock County Big Buddy Program.

Other teams were comprised of three generations. Among them were Jack Leslie, Jill Buss and Lauren Buss and also Roxy Bonnett and daughter-in-law and granddaughter.

Other family teams were Keith Benson and his daughters Jodi Benson and Janelle Lenz, Charlotte Dammer and her granddaughter Kiley, and Cheryl Nath and her granddaughter



Above, Lauren Buss sorts pieces. At right are Amanda Lammert and Estelle Olson.

Elaine Nath.

Attendees were from Worthington, Rushmore, Ellsworth, Wilmont, Kanaranzi, Beaver Creek, Luverne, Sioux Falls and Volga, South Dakota.

Each team got to take their puzzle home, and the first place teams were awarded additional puzzles as prizes. The event wrapped up at 11 a.m. with a pizza party.

"The pizzas were gone quickly, and there were lots of smiles," said Corrine Bonnema, one of the event organizers.



Pictured above are Charlotte and Kiley Dammer. Pictured at right are Summer Mollberg and Heather Roberts. Pictured below are sisters Autumn and April Norman.



Happy 80th Birthday
Kathy Heeren!

Saturday March 18

Greetings may be sent to:
1000 N. Spring St.
Luverne, MN 56156



REQUEST FOR BIDS

Class 5 crushed gravel, pit run and crushed rock to be spread on **Martin Township roads.**

Submit bids on or before **Monday, March 13** to **Allen Nuffer**
363 60th Ave, Hills, MN 56138
605-521-6624

Daylight Saving Time Begins

Don't forget to set your clocks 1 hour ahead on **Sunday, March 12** at 2 a.m.



Good snowshoes are like good friends; they don't let you down

I invested in snowshoes this winter after several treks across open fields in a borrowed pair with my neighbor friend, Wendy.



ON SECOND THOUGHT

By Lori Sorenson, editor

snow, through the grove and around the acreage.

Our boots, secured in the snowshoes, would sink a few inches if we hit fresh, fluffy stuff, but mostly we stayed on the surface.

Colton, with shorter legs and smaller feet, at the midway point of our return hike, decided the snowshoes were cumbersome, so he handed me his pair and took off without them.

With about 200 yards remaining between us and home, I gently suggested he may need them.

"This is much easier," he assured me, his boots crunching across the top of a hard drift.

As the words left his mouth, his right foot punched through the crust and his leg disappeared over his knee.

It was one of those teachable moments when no teaching — or even words for that matter — were necessary.

The point of snowshoes, of course, is to enable walking on snow without falling through. What better way to appreciate the value of snowshoes than to attempt snow walking without them.

It later occurred to me a good pair of snowshoes are like good friends (and good grandmas).

They're comfortable, dependable and can help you stay on top of things through a difficult journey.

Life can get in the way of relationships, but all it takes is an occasional "breakthrough" to realize we're better together.

Where are the mental health care providers?

In rural Minnesota, they are scarcer than ever

STAR HERALD EDITORIAL

Rural residents have dealt with diminishing access to health care for decades, largely because increasing costs of services makes sparsely populated areas less economically feasible to serve than densely populated urban areas.

This problem applies just as much to mental health services as to any other aspect of health care in the United States.

But now more than ever, as the demand for mental health services increases everywhere, mental health providers are struggling to hire and hang on to workers.

In rural areas, where demand is on average higher and the supply lower than in population centers, providers and their clients are especially feeling the strain of a workforce shortage.

Based on a survey and a series of interviews conducted in the fall of 2022 by researchers at the Center for Rural Behavioral Health at Minnesota State University

Mankato, it's apparent that the mental health care workforce shortage is being aggravated by a handful of quite specific and identifiable problems.

They include graduating workers, recruiting them, and keeping them once they are hired.

Bringing these challenges to light and solving them may not fix the workforce shortage completely — the wave of retiring baby boomers plays a significant part in the shortage — but resolving them could help with the supply of mental health care professionals and workers going forward, especially in rural communities.

The disparity in mental health care between urban and rural areas

is seen in provider-to-client ratios. There is one licensed provider for every 197 residents in metro areas compared with one provider for every 741 residents in isolated rural areas.

The study looked at why these disparities exist and considered solutions.

To attract licensed workers to rural areas, researchers suggest increasing the number of internships in rural places.

The rationale is that students are more likely to stay and practice near where they interned.

They also suggest financial assistance for rural clinics to make

Mental health, go to page 5

Mundt: 'It's a privilege to own a vehicle'

To the Editor:

Your right to travel does not mean you have a right to drive or a right to a particular mode of travel. It is a privilege to own a vehicle.

Since God graced humans with legs, you could always give walking a try so your "rights" aren't infringed upon.

Roads and highways are public infrastructure, and state governments are within their rights to require drivers to be properly licensed.

Is there an age limit to your "rights," or are we going to waive that also?

How do you plan on maintaining roads?

It is your choice to travel by vehicle. If you can't handle the responsibilities that come with that, WALK!

Ashley Mundt, Luverne

Forrest: Nutcracker's multiplier effect leads to thriving community

To the Editor:

Studies show that if someone visits your community and stays for two or more hours, the average amount spent in the community is \$200 including visiting an attraction, filling their vehicle with fuel, eating and shopping.

Presently, the Jolly Green Giant in Blue Earth brings in around 50,000 people per year. If Luverne could bring in a similar amount of people per year to see the World's Largest Nutcracker, which is a likely scenario, and have even 5 percent of that number spend two or more hours in the community, that would be 2,500 people spending their time and money in the community. At the rate of \$200 spent per visitor, Luverne could see \$500,000 infused into the economy each year.

There is, as always, more to the story than just the initial \$500,000 infusion from the visitors. We can also consider the Local Multiplier Effect, which is an economic theory put

forth by John Maynard Keynes. The theory states that money spent locally will recirculate a certain number of times, generating significantly more impact than the original investment.

A study in Luverne shows a local multiplier effect of seven, meaning that the \$500,000 infused in the economy of Luverne by people visiting the World's Largest Nutcracker would be recirculated and generate \$3,500,000 for the local economy per year.

The fact that this project will be created using private donations and will sit on private property is a huge bonus. The World's Largest Nutcracker can be a perpetual money maker for Luverne at no cost to the taxpayers.

To me, numbers like this are extremely exciting for the community and can contribute to Luverne not only surviving as a community, but thriving.

Russell Forrest, Luverne

Don't let sparkly new fishing gadgets distract from what's important

About this time each year, fishing enthusiasts start to dream about getting out on the lake and hooking the big one.

Sure enough, this past week the Bass Pro Shop/Cabela's Spring Fishing Classic catalog showed up. It's not really a catalog, but it is 44 pages of all things fishing and fishing-related stuff.

To say I am an avid fisherman would be a gross overstatement. I fish maybe a couple times a year, and for the most part I haven't purchased any new fishing equipment for five years, give or take a year or two.

If you don't count the fishing licenses, about the only other purchase I've made was an aerated minnow box that I use more often as a beer cooler.



FOR WHAT IT'S WORTH

By Rick Peterson, general manager

Thumbing through the Spring Fishing Classic pages, it would appear inflation has had its way with all things fishing. The number of rods and reels offered for sale within the pages is overwhelming, with prices to match. Some of the rod and reel combinations were priced north of \$500.

Today's fish must be fussy eaters because the buffet of artificial lures is sure to appeal to

the finickiest of fish. A single lure can go for as much as \$20 bucks. For \$199.98 you can get yourself a backpack tackle box. — That's the sale price, by the way.

You would think, with the new rod and reel along with your lures stored neatly in your backpack tackle box, you're ready for the water. Oh no, my fishing friend, you need a boat and one of those electronic fish finders.

There is a Humminbird

SOLIX 10 chirp Mega SI G3 fish finder ... whatever the heck that is ... priced at \$2,399.99. And keep in mind their slogan: "You can shop with confidence because Bass Pro Shop will simply not be undersold." That sounds like a fish story to me.

As far as the boat goes, a fishing buddy of mine was at the boat show in St. Cloud a couple of weeks ago and texted me a picture of a fishing boat with a sticker price of \$104,000.

Of all the "must have" items in the catalog, here is one that won't help you catch a fish. It costs less than the rod and reel, is cheaper than five lures ... it's the life jacket.

Have a safe fishing season, catch a big one or two, and wear your life jacket.

Green stresses the importance of print news format

To the Editor:

I recently sent a letter and a copy of last week's Star Herald to the editor of the Minneapolis Star Tribune. I wanted to communicate my feelings about the importance of the print format in communicating the news.

The Star Herald is a prime example of a quality publication that continues to inform its readership.

Too many news rooms are reducing their staff due to economics, with the result that the readership is losing important eyes and ears in their towns' areas of functioning/government/and shared community spirit.

Your newspaper is an important support to the Luverne motto, "Love the Life."

Larry Green, Luverne

E-mail: editor@star-herald.com Web site: star-herald.com
Phone: 507-283-2333 Fax: 507-283-2335

Published Thursdays by Tollefson Enterprises
POSTMASTER: Send address changes to
117 West Main, P.O. Box 837, Luverne, MN 56156.
Periodicals postage paid at Luverne,
Permit #33 and at additional mailing offices.

General manager: Rick Peterson
Sales: Wyatt VanSteenberg
Office manager: Deb Lusty
Office assistant: Jennifer Nelson
Production Manager: Heather Johnson
Production: Brooke Huisman

News staff:
Lori Sorenson, editor
Mavis Fodness, reporter
Esther Frakes, copy editor
Greg Hoogveen, sports editor

Rock County
STAR HERALD
Rock County's newspaper since 1873

(ISSN 0889-888X)

SUBSCRIPTION RATES
\$79 per year in Rock County; \$96 per year all other areas.
Single copies \$1.25

Entire contents copyrighted by
Tollefson Publishing Roger Tollefson, publisher

The *Star Herald* encourages letters to the editor expressing the opinions of readers and intends to print all letters. Letters not meeting the guidelines will not be printed. The *Star Herald* will verify the authenticity of all letters. Letters must have the name of the writer, a signature and address. Unsigned letters will not be considered. The *Star Herald* will edit for grammar, spelling and clarity. Any letters containing offensive language, libelous or slanderous material, or misleading or false information will be rewritten before being published. The *Star Herald* will not publish letters written with the sole intent to advertise or serve as a thank-you. Letters with more than 300 words may be edited. The deadline for letters is Monday 10 a.m. They may be delivered or mailed to the editor, *Rock County Star Herald*, P.O. Box 837, 117 W. Main St., Luverne, Minn. 56156.

FARM LAND SALES (2023 ASSESSMENT)

SALES PERIOD: OCTOBER 1, 2021 - SEPTEMBER 30, 2022

LOCATION	SALES AMT	FINANCE ADJ NET (DOR)	EMV	SALES RATIO	SALE DATE	BUYER	SELLER	DEEDED ACRES	TILLABLE ACRES	CER	% TILLABLE	DEEDED \$/ACRE	TILLABLE \$/ACRE	CRV #	PARCEL NUMBER
34.5 ACRES+ LAND ONLY															
RD TWP	\$ 1,312,000	\$ 910,000	69.36%		10/1/21	STEINHOFF, MATTHEW	FLORENZEN, LOWELL ETAL	160.00	117.80	78.95	73.63%	\$ 8,200	\$ 11,138	1341197	10-0141-000
RD TWP	\$ 1,596,012	\$ 1,308,800	82.00%		10/1/21	GERTZ, WAYNE & LORI, & GARY	FLORENZEN, LOWELL ETAL	139.00	135.81	93.86	97.71%	\$ 11,482	\$ 11,752	1341226	10-0153-100
BP TWP	\$ 1,272,000	\$ 784,000	61.64%		10/12/21	VAN HULZEN, REED	FLOKERT, MARILYN ETAL	80.00	79.00	86.13	88.75%	\$ 15,900	\$ 16,101	1330650	01-0048-000
BC TWP	\$ 1,135,250	\$ 936,300	82.48%		10/21/21	SANKEY, LESLEY & LOREEN	OLSON/BUNK	119.50	115.35	70.41	96.53%	\$ 9,500	\$ 9,842	1336632	02-0293-000
BP TWP	\$ 1,292,000	\$ 1,450,700	112.28%		10/22/21	ARENDS, PAUL & TERESA	FODNESS, ETAL	160.00	143.10	82.08	89.44%	\$ 8,075	\$ 9,029	1339818	01-0127-000
BP TWP	\$ 1,416,000	\$ 691,200	48.81%		10/27/21	ROZEBOOM, KEVIN TRUST	BUYS, HARLAN & VERNA TRUST	160.00	153.70	54.24	96.06%	\$ 8,850	\$ 9,213	1343740	01-0102-000
SPWTR	\$ 1,099,830	\$ 1,071,900	97.46%		11/11/21	ARENDS MANAGEMENT LLC	KENNEDY, JOHN ETAL	120.20	109.00	91.20	90.68%	\$ 9,150	\$ 10,090	1349691	11-0052-100
SPWTR	\$ 2,239,840	\$ 1,562,800	69.77%		11/12/21	KOJIMA, KRISTI TRUST	KAHLSTORF, RENITA ETAL	160.00	154.90	94.41	96.81%	\$ 13,999	\$ 14,460	1357266	11-0048-000
SPWTR	\$ 2,407,005	\$ 1,547,400	64.29%		11/16/21	ARENDS MANAGEMENT LLC	ZIMMERMAN-WILLIAMS LLC	160.20	150.20	95.77	93.76%	\$ 15,025	\$ 16,025	1350804	11-0051-000
KAN TWP	\$ 494,494	\$ 522,000	105.56%		12/3/21	SCHILLING, CARLA/CURTIS & MOLLY	MATTHIEN, LARRY & MARLYS	54.34	52.40	82.12	96.43%	\$ 9,100	\$ 9,437	1355705	05-0006-200
MAG TWP	\$ 1,224,000	\$ 937,400	76.58%		12/15/21	SCHNEIDERMAN FAMILY TRUST	BUST, ETAL	80.00	79.00	94.79	98.75%	\$ 15,300	\$ 15,494	1359035	07-0028-100
SPWTR	\$ 1,280,000	\$ 741,200	57.91%		1/10/22	GATH, DALTON & STETSON	GRAVLEY, BETH	80.00	75.44	91.99	94.30%	\$ 16,000	\$ 16,967	1370219	11-0054-000
SPWTR	\$ 1,809,065	\$ 1,201,500	66.42%		1/11/22	DIETRICH/PAP	GRAVLEY/OOLBEKINK	150.13	133.50	85.97	88.92%	\$ 12,050	\$ 13,551	1370808	11-0220-100
BC TWP	\$ 905,000	\$ 954,300	105.45%		1/20/22	TOFTLAND, DAVID	ANDERSON/HAINS	152.30	132.03	73.48	86.69%	\$ 5,942	\$ 6,855	1373075	02-0115-100
BP TWP	\$ 1,165,000	\$ 1,160,300	99.60%		2/16/22	LINDSEY, MICHAEL & JENNIFER	WILSON, JOHN & CHARLOTTE	157.93	110.00	85.06	69.65%	\$ 7,377	\$ 10,591	1380525	01-0151-000
MARTIN	\$ 1,428,000	\$ 1,353,000	94.75%		3/8/22	BOSCH, TIMOTHY & TRISTA	SIEGFRIED, DANIEL & MARY	145.00	140.53	98.31	96.92%	\$ 9,848	\$ 10,162	1387391	08-0045-000
SPWTR	\$ 2,595,600	\$ 1,552,400	59.81%		3/15/22	HOOGLAND, RANDY & TERRY	HURLBERT, JANE TRUST	199.86	194.11	-	97.12%	\$ 12,987	\$ 13,372	1414113	11-0096-000
SPWTR	\$ 680,888	\$ 380,600	55.90%		3/15/22	LAUKES, TERRY & CHRISTINE	HURLBERT, JANE TRUST	39.50	38.00	96.20%	\$ 17,238	\$ 17,660	1414113	11-0103-000	
SPWTR	\$ 500,000	\$ 394,100	78.82%		3/31/22	GATH, DALTON & STETSON	VAN WESTEN, KEITH	40.00	39.43	93.60	98.58%	\$ 12,500	\$ 12,681	1394041	11-0148-100
SPWTR	\$ 2,157,339	\$ 1,442,000	66.84%		5/10/22	GATH, MARK & LEAH	VAN WESTEN, KEVIN & KATHY	157.47	141.61	94.53	89.93%	\$ 13,700	\$ 15,234	1414064	11-0147-100
LLUV TWP	\$ 421,000	\$ 313,900	74.56%		9/7/22	VAN DYKE, SCOTT	BARSTAD, NORLAF	80.00	51.00	56.15	63.75%	\$ 5,263	\$ 8,255	1465559	06-0232-000
BP TWP	\$ 111,125	\$ 86,600	77.93%		9/30/22	VAN DYKE, JESS & DARCI	INKAMP, THEA	44.45	0.00	46.64	0.00%	\$ 2,500	\$ -	1475748	01-0018-200

LOCATION	SALES AMT	FINANCE ADJ NET (DOR)	EMV	SALES RATIO	SALE DATE	BUYER	SELLER	DEEDED ACRES	TILLABLE ACRES	CER	% TILLABLE	DEEDED \$/ACRE	TILLABLE \$/ACRE	CRV #	PARCEL NUMBER
34.5 ACRES+ LAND & BUILDING															
SPWTR	\$ 670,380	\$ 574,000	85.62%		11/18/21	ARENDS MANAGEMENT LLC	KENNEDY, RICHARD	40.00	29.20	95.07	73.00%	\$ 16,760	\$ 22,958	1349726	11-0052-000
SPWTR	\$ 1,856,000	\$ 1,374,800	74.07%		4/18/22	CHESLEY, JASON/STEPHAN	KLEIN/SCHNEEKLOTH	160.00	126.30	-	78.94%	\$ 11,600	\$ 14,695	1401704	11-0026-000

All farm land sales larger than 34.5 acres, the qualifying acre value for a farm land, for Rock County sold between October 2021 and September 2022. Listed in order of sale date on deed.

Land valuations in county rise 25 percent; Springwater Township to jump 65 percent/from page 1

cent and 105 percent of the actual market value for like properties, so an ag land sale affects neighboring properties' valuations. To bring Springwater Township's tillable land values in line with statute, the new valuations will need to increase 65 percent, based on the 11 recent sales. Jacobs said if it's only one or two sales, the averages aren't as affected. But in Springwater Township, where 11 sales were all comparatively high,

nearly all of Springwater Township's land values will increase. "I have to use those 11 sales to determine estimated market values," she said. Further, Jacobs said Springwater's per-acre land values have historically been lower than most others in Rock County with similar soil types, so the recent land sales will have an even steeper impact on neighboring land values. There are several factors that affect land values,

Farm incomes, grain prices, interest rates, return on other investments and 1031 exchanges are often mentioned as reasons for the increase. Valuation increases don't directly correlate with tax increases. She points out, however, that increased valuations don't necessarily mean taxes will go up. It's true that increases in valuation relative to other properties can affect

taxes, but many other factors also affect taxes. They include changes in a levy, economic development, shifts in classification and operating levies (by school districts, for example). Sometimes local governments can increase their levies, but with other economic growth, property taxes do not rise. Jacobs said she expects property owners will have questions after they receive their valuations,

and she encourages people to contact her at 507-283-5022 or rachel.jacobs@co.rock.mn.us. There are meetings where residents can challenge their assessments. The local Board of Appeals and Equalization meetings will be during the second week in April. If property owners call ahead of those meetings, assessors can research and review the specific parcel(s) to thoroughly answer property owners' questions.

Property owners should have their parcel's address and ID ready to save time. There is a limited amount of time in which to challenge a property's valuation. The valuation notices that go out in the next two weeks will affect taxes payable in 2024. Residents will also soon receive their 2023 tax statements, which show the 2022 assessed value of the property and total taxes owed this year.

ON THE RECORD

Dispatch report

- Feb. 24**
 - Complainant on 50th Avenue reported hazmat material.
 - Complainant on S. Kniss Avenue reported an assault.
 - Complainant on Oak Drive reported a scam.
 - Complainant on County Road 6 and 51st Street requested roadside assist.
 - Complainant on Britz Drive reported a runaway.
 - Complainant on S. Kniss Avenue reported training.
 - Complainant on N. Kniss Avenue reported training.
- Feb. 25**
 - Complainant on N. Spring Street reported threats.
 - An outage was reported.
- Feb. 26**
 - Complainant on W. Bishop Street reported suspicious activity.
 - Complainant on 251st Street and 70th Avenue, Jasper, reported a fire call.
 - Complainant on S. Kniss Avenue reported hazmat material.
- Feb. 27**
 - Complainant reported a driving complaint.
 - Complainant on County Road 5, Luverne, found property.
 - Complainant on 121st Street, Beaver Creek, reported a scam.
 - Complainant in Hardwick reported a miscellaneous public assist.
 - Complainant west-bound on Interstate 90, mile marker 6, Beaver Creek, requested assistance from another

- department.
 - Complainant reported training.
 - March 1**
 - A warrant was issued.
 - Complainant on S. Fourth Street, Beaver Creek, reported a road and drive laws issue.
 - A weather issue was reported.
 - March 2**
 - Complainant on N. Kniss Avenue reported an open door.
 - Complainant west-bound on Interstate 90, mile marker 32, Adrian, requested road repairs.
 - Complainant in Sioux Falls requested assistance from another department.
 - Complainant on E. Maple Street reported a parking complaint.
 - Complainant west-bound on Interstate 90 on-ramp, near Magnolia, requested roadside assist.
 - March 3**
 - Complainant on S. Kniss Avenue reported a parking complaint.
 - Complainant on Crawford and Blue Mound Avenue reported a parking issue.
 - Complainant reported a scam.
 - Complainant on S. Kniss Avenue requested assistance from another department.
- In addition, officers responded to 7 motor vehicle accidents, 2 vehicles in the ditch, 5 escorts, 8 ambulance runs, 4 paper services, 6 animal complaints, 1 fingerprint request, 10 burn permits, 2 background checks, 1 alarm, 7 purchase and carry permits, 52 traffic stops, 20 abandoned 911 calls, 2 tests, 1 welfare check and 1 follow-up.

Luverne man arrested following I-90 pursuit

By Lori Sorenson

The Rock County Sheriff's Office was involved last weekend in a slow-speed pursuit that ended with a spin-out on I-90 near the South Dakota rest area. According to Sheriff Evan Verbrugge, the incident began 12:18 a.m. Sunday when a deputy stopped a motorist in Luverne for no left brake light and failing to use a turn signal. The driver, later identified as Zachary Dietz, 50, Luverne, reportedly refused to stop for the squad car lights and siren and instead left town on I-90 west-bound. The Minnesota State Patrol assisted with stop sticks, holding up west-bound traffic in the process. Dietz drove over the sticks and continued driving with a flat tire before stopping just west of the Beaver Creek exit. According to the report, law enforcement



approached Dietz, but he refused to exit the vehicle and drove off again. The vehicle was a gold Pontiac Grand Prix with South Dakota plates. The next time he stopped, officers broke the driver's window and noticed Dietz had a knife to his neck. When he again drove off, a State Trooper used a maneuver to spin out the Pontiac, which came to stop at the South Dakota rest area on I-90. With assistance from the South Dakota State Patrol, Dietz was arrested without further incident at 1:18 a.m. Dietz at first wouldn't identify himself and is now facing charges of fleeing a peace officer in a motor vehicle, obstructing legal process, possession of marijuana in a motor vehicle and possession of drug paraphernalia. He is being held in the Nobles County Jail until his court appearance.

Mental health/from page 4

more internships and training available. And they recommend introducing students early to mental health care as a profession, especially in rural areas. But even the students who want a career in mental health are limited by lack of college faculty in their field. Two-thirds of programs responding said they turn qualified students away every year, and 90 percent cited lack of teaching faculty as a reason. The reason for this, not surprisingly, is financial limits on colleges and universities. Students are also discouraged from pursuing mental health work in rural areas because of low pay in outstate clinics, so it's thought that upfront tuition waivers and scholarships could offset this trend. Also, grants could support students at the beginning of the educational process.

Lack of access to mental health care leads to ER, jail, addiction, suicide. Early intervention is key with mental health concerns, and left untreated, mental health challenges often progress to drug addiction and suicide. Other outcomes are emergency rooms or jails, especially in rural counties with few alternatives. There they consume valuable resources to treat what could have been an out-patient issue, had care been available. Minnesota is experiencing an unprecedented demand for mental health services, and rural Minnesota is being hit especially hard. The rates of suicide in rural Minnesota are higher and rising faster than in the Twin Cities or other population centers. In 2021 suicide accounted for two-thirds of gun deaths in Minnesota, and the largest proportion of those deaths were in the state's most rural areas.

NOTICE

STUDENTS OF LUVERNE HIGH SCHOOL TAKE NOTICE

The Scholarship Committee of the A.R. Wood Educational Trust is currently accepting applications for initial or renewal scholarships from seniors and previous graduates of Luverne High School.

- To be eligible for consideration candidates must:
 - Be graduates of Luverne High School
 - Rank in the upper fifteenth percent (15%) of his/her graduating class; and
 - Have maintained a 3.0 GPA or better grade point average.

Requests for applications should be directed to:

First Bank & Trust
Wealth Management Services
Attn: Kerri Brand
P.O. Box 1347
Sioux Falls, SD 57101-1347

All requests for applications must be received by First Bank & Trust no later than May 1, 2023. All completed applications must be postmarked and submitted to First Bank & Trust by June 15, 2023.

In accordance with the A.R. Wood Educational Trust, decisions regarding recipients, amounts, and number of awards will be made at the sole discretion of the Scholarship Committee.



Mavis Fodness photos/0223 Read Across America 2023 H-BC

The Hills-Beaver Creek Elementary School student body and staff surround secondary school seniors Britton McKenzie (left) and Leif Tollefson on Thursday, March 2, as they perform a skit based on the Dr. Seuss story, "The Zax" to illustrate the importance of conflict resolution. The skit was part of "Read Across America," which encourages schools across the U.S. to spend the day reading in celebration of the late author's birthday.

H-BC students celebrate 'Read Across America' with skit, activities

By Mavis Fodness

As thousands of students nationwide celebrated Read Across America Day on March 2, students at Hills-Beaver Creek Elementary received an extra special lesson celebrating Dr. Seuss' birthday.

The kindergarten through fifth-grade students were treated to a skit by H-BC secondary students based on the Dr. Seuss story, "The Zax."

The skit's ending was modified to show how to solve conflicts.

"We really wanted them to focus in on how silly the Zax were being by not listening to one another," said media specialist Lexi Moore, who teamed with district social worker Alison Breuer to guide "The Zax" performance.

Seniors Leif Tollefson and Britton McKenzie represented the North-Going Zax and the South-Going Zax from the Dr. Seuss book.

In the book's version, neither Zax wanted to go outside their assigned direction and stood stalemated, staring and arguing with one another.

Moore said the Dr. Seuss story was read to the kindergarten



through second-grade students prior to the skit. "We discussed the many ways the Zax could have resolved their problems and what to do when you don't agree with your friends," Breuer said. "We also reinforced these ideas with a worksheet/coloring contest for grades 3-5."

Senior Amallia Ternus reads Dr. Seuss' "Oh, the Places You'll Go" to fourth-graders. At right: Senior Olivia Bork (far left) grins as the Dr. Seuss trivia team of (from left) Lily Fick, Cheyelen Kraayenhof (standing), Athena Kobernick-Pasch and Quinn Bork (seated) react to answering questions.



The worksheet featured speech bubbles and the students were asked to write the dialogue to help the Zax solve their problem.

In the skit version, they leapfrog out of each other's way, ending the conflict.

Conflict resolution is part of the Patriot Pride program that teaches students positive behavior interven-

tions and supports.

The high school students played an additional role in the Read Across America event.

"Having the high schoolers there modeling both good behavior and showing that they enjoy reading is a giant benefit for the elementary

Reading, continued on page 7

REMEMBER WHEN

10 years ago (2013)

A pair of Luverne High School athletes wrapped up the 2012-13 season at the Minnesota State Class AA Individual Wrestling Tournament at the Xcel Energy Center in St. Paul over the weekend.

Senior Eli Dooyema and sophomore D.J. Reker earned the right to represent Luverne at the state tournament for the first time since 2009 when they placed second in their weight classes at the section tournament.

This is the first time LHS sent multiple wrestlers to compete at the state tournament since the 2002-03 season.

Unfortunately for the LHS entries, both Cardinals went 0-2 without placing at state.

25 years ago (1998)

Luverne's quest to reach the state hockey tournament came to an end when the Cardinals dropped a pair of games during the Junior Gold Maroon Regionals played in Waseca Friday through Sunday.

East St. Paul, the eventual champion, beat the Cards by two goals in the tournament opener Friday. Burnsville ended Luverne's 20-9 season by handing the Cards a one-goal setback in double overtime Saturday.

50 years ago (1973)

The school board of District 670, Luverne, decided Tuesday that the Hardwick school building will be abandoned as a teaching facility after Jan. 1, 1974, unless factors arise to change a situation that now exists. They have a year in which to weigh those factors.

Their action came as the result of orders issued last week by the state fire marshal's office. ...

Ten corrective measures were ordered to be made on the building within 90 days to make the two buildings, which make up the Hardwick school, safe. Through negotiations made over the week end, the board

hopes to be able to use the newer portion of the Hardwick building for another year by making minimal alterations and improvements. Cost of these improvements was estimated at less than \$2,000. The cost to make all the improvements, were the board to comply with the fire marshal's orders, was estimated at from \$40,000 to \$50,000, it was brought out at Tuesday's meeting.

75 years ago (1948)

Greater difficulty in securing teachers for the rural schools of Rock county than has been experienced in the past can be expected in the future, Supt. V.M. Barrett said this week.

A new ruling, approved by the State Board of Education February 25, provides that for the school year 1948-49, no teacher who holds an elementary limited, first grade or second grade certificate shall be granted another renewal unless eight quarter hours of college credit in approved courses are earned.

It further provides that no teacher who has held two limited emergency permits valid in ungraded elementary schools shall be granted a third permit unless eight quarter hours of college credits are earned.

100 years ago (1923)

Evidence anew that the old board of commissioners for Rock county of which W.A. Rowe, of this city, and O.I. Godfrey, of Beaver Creek, were members are justly entitled to the commendation of the taxpayers of this county for the sound and conservative manner in which the affairs of the county were conducted by them, was contained in Sunday's St. Paul Pioneer Press.

This information was conveyed in an article by Jack Hammond, of the Pioneer Press staff, in which it is declared that Rock county's tax rate of 29.62 mills is the lowest in the state; the levies in six counties are 100 mills or more, and that the average rate in the state is 54 mills.

1943: Lars Larson happy about immigrating

The following article is part of the Diamond Club Member group that began in the January 7, 1943, issue of the Rock County Star Herald. Members of this group consist of persons of age 75 and older.

The following appeared in The Rock County Herald on Aug. 26, 1943.

Claims made by friends that the United States was the ideal spot on the globe to live tempted Lars Larson, Hardwick, to leave his home at Aal Hallingdal, Norway, and come to this country. That their claims were not exaggerated in Mr. Larson's mind was evidenced by the fact that he borrowed money to send for the remainder of the family the following year.

Mr. Larson was born January 12, 1863, the son of Mr. and Mrs. Knute Larson. His parents were farmers, living about 18 miles from the capital city of Oslo. Although he was only what is now a short driving distance from the capital, he never saw it until he embarked for the United States in 1882.

He attended school in Norway and stated that classes were held in the various homes of the community until later when a school building was built. The schoolmaster would room and board at his home where the classes were being conducted, and when the classes would be moved, he would move, too. Although children learned to read and write and do arithmetic, religion was one of the main subjects.

After he was confirmed, he began working away from home on farms. A day's work



BITS BY BETTY

By Betty Mann,
Rock County Historian

was begun before sunrise and ended after sunset. Sometimes, when they went into the forests to get their wood for their winter fuel supply, they would start from home at about 2 a.m.

His arrival in this country was delayed by ice off the banks of Newfoundland. When the ship neared the shore, huge ice floes surrounded it, and for 11 days, it made little or no progress. What little headway was gained by the ship during the day was lost at night as the ice floated out to sea. Seals were thick in the vicinity he recalls, many of them sunning themselves on the ice close to the ship. The vessel finally docked at Quebec, and from there, he went by train to Claremont, Iowa, where he had friends.

He worked there seven years, and then at the late Rasmus Halvorson farm for about two years. He bought some land in Battle Plain township, paying \$12 per acre for 80 acres. Later he added another 80 acres for which he paid \$30

CELEBRATIONS

Open house

An open house bridal shower for Alexis Knutson will be from 1 to 3 p.m. Saturday, March 11, at Take 16 Brewing Co. in Luverne.

Card shower

Kathy Heeren will celebrate her 80th birthday on Saturday, March 18. Greetings may be sent to her at 1000 N. Spring Street, Luverne, MN 56156.

MENU

Monday, March 13:

Biscuits and sausage gravy, green beans, cinnamon apple slices, dessert.

Tuesday, March 14:

Meatballs, baked potato with sour cream, stewed tomatoes, dinner roll, milk.

Wednesday, March 15:

Orange chicken, rice pilaf, peas and carrots, peaches, bread.

Half-Price Day sponsored by ACE/Linda Wenzel.

Thursday, March 16:

Sloppy Joe on a bun, salad, vegetarian baked beans, fruit, cookie.

Friday, March 17:

Pork loin with gravy, mashed potatoes, carrots, dinner roll, birthday cake.

LSS Dining offers well-balanced and affordable meals in a community atmosphere.

Call Pam Franken at 283-9846, extension 11 to reserve one day prior, to arrange to pick up a dinner or for home-delivered meals.

Gift certificates are available at the meal site or online at www.lssmn.org/nutrition.

Bits, continued on page 7

OBITUARIES

David Davis

David M. Davis was born July 18, 1951, to Eva E. and Louis S. Davis in Luverne, Minnesota. He died March 1, 2023, in Ocala, Florida.

David began life on the farm north of Beaver Creek, Minnesota, and spent his pre-school and early grade school days as a farm boy riding the family horse, Baldy, many miles and began his love for horses. He could ride bareback almost before he could walk and used the trick of jumping on the horse's neck when feeding to obtain the riding position.

In 1960 Dave's dad sold out and moved the family to Luverne, where he bought a restaurant. Dave, at about 9 years of age, sought ways to be near the horse, or any horse, and discovered a small farm with horses near town. It belonged to Burdell Rowe, and soon Dave had a job of sorts cleaning stalls and fitting horses. He made enough money to buy his first horse which he proceeded to fit, train and show with the tutelage of Mr. Rowe. Dave took the horse to his first show, a small 4-H show, and won first place. He was forever lost to the horse world.

Throughout high school and beyond, he could be found at the Rowe ranch, riding, training and learning from an accomplished horse



trainer, a man with high standards and impeccable judgment. Also, there were the Rowe children, Joe and Shirley, and Dave became as a member of the family as well as lifelong friends.

After graduating from Luverne High School in 1969, Dave was drafted into the U.S. Army and served honorably with a tour in Vietnam. Upon his discharge from the Army and his return, he once again heard the call to the only thing he knew this well and desired to not just continue, but excel to his perfection standards. Thus began Dave's professional career as a horse trainer and breeder.

Dave soaked up equestrian genealogy and pedigree information like a sponge and ultimately became an encyclopedia of knowledge unimaginable in depth and accuracy.

Throughout the '70s, '80s and '90s, Dave trained countless horses in Minnesota, Iowa, Wisconsin and Illinois, and ultimately he settled in Florida about 2003, training at various ranches, and finally in 2019 his dream of having his own place became a reality.

Moreover, his dream of obtaining the best horses to breed and sire that he could become a goal being

realized. It was here that he had finally collected a small group of brood mares with the most desired bloodlines and all the existing frozen semen of a World Champion Quarter Horse named Investment Asset. He began his breeding program, achieving his desired results. The first year's offspring were exacting in features, composition and temperament and were as perfect as Dave had planned for.

In addition, Dave acquired the remaining semen of another Champion stallion directly related to Investment Asset, named Absolute Investment. These two horses were to be the foundation of Dave's breeding program, and with the quality mares he had collected, he expected to produce more very successful show horses and thus had all the ingredients to expect them to achieve World Class Championship status.

Sadly, although some results have been successfully well underway with four two-year-olds and three yearlings on the ground, Dave's life was cut short far too soon, and World Champion status is yet to be realized.

BUT ... stay tuned ... these offspring will undoubtedly be heard of in future years and will continue the legacy begun and produced by David M. Davis, Horse Trainer.

(0309 V)

Gary Mensen

Gary Francis Mensen, 75, of Lubbock, Texas, died Wednesday, Feb. 22, 2023, surrounded by his family.

A memorial service was at St. Elizabeth's Catholic Church on Monday, Feb. 27, 2023. A graveside service followed at Resthaven Memorial Park.

Gary Mensen was born on Nov. 30, 1947, in Ashton, Iowa, to Alphonse and Anna Marie Mensen. He grew up in Wilmont throughout his elementary school years and later moved to Adrian, where he graduated from Adrian High School in 1965. After graduation Gary worked for the highway department and eventually moved on to work at Terrace Park Dairy.

Gary married Barb on July 26, 1969, in Luverne. In 1976 the family moved to Independence, Missouri, where Gary ran his own milk route. In 1978 Gary took a route salesman position for Gary Schwan's in Garden City, Kansas, which later brought him to Canyon, Texas, in 1981. Gary and Barb moved to Lubbock in 2001.

In November of 2018, Gary was diagnosed with myelofibrosis. In May of



2019, Gary and Barb temporarily moved to Dallas, Texas, where Gary received cancer treatment at Baylor, Scott and White. On June 6, 2019, Gary underwent a stem cell transplant made possible by a generous donor from Germany.

In January of 2020, Gary and Barb returned to Lubbock, Texas, where he continued his cancer treatment until March of 2020. In the fall of 2022 the cancer returned. Barb was at his side throughout his journey with cancer.

Gary was a member of Saint Elizabeth's Catholic Church in Lubbock. He served in the Catholic church throughout his life. His perseverance and unwavering faith in God were truly admirable.

Gary joined the Knights of Columbus in 1977 as a 3rd degree Knight. Gary enjoyed spending time with his grandchildren.

Gary was known for his witty jokes and making everyone laugh. He had a caring and outgoing personality.

Gary is survived by

his wife, Barbara Mensen; three children, Brad (Niki) Mensen of Lubbock, Brian (Stephanie) Mensen of Amarillo, Texas, and Jennifer (Craig) Payne of Lubbock; eight grandchildren, Savanna (Michael) Norman of Amarillo, Skylar Mensen and Tory of Amarillo, Morgen Williamson and her husband Jacob Carrasco of Lubbock, Seth (Caitlin) Williamson of College Station, Texas, Alisen Mallory (Dre) of Amarillo, Alyssa (Kevin) Shoemaker of Lubbock, Kirstie Mensen of Gaffney, South Carolina, and Courtney Payne and Riley Smythe of Lubbock; 12 great-grandchildren; siblings Mike (Karen) Mensen of Luverne, Clara (Ron) Arnds of Magnolia, Frances (Roger) Reese of Bridgewater, South Dakota, Colleta (Patrick) Metz of Adrian and Margaret (Lyle) Recker of Sherburn; and numerous cousins, nieces, nephews and friends.

He was preceded in death by his parents; his grandparents; a sister, Pat Emich; and four angel babies.

Arrangements were provided by Sanders Funeral Home of Lubbock, Texas, sandersfuneralhome.com. (0309 F)



Mavis Fodness photo/0223 BPA 2023

A large contingency of Luverne High School students will compete in the upcoming state Business Professionals of America conference slated to begin today, March 9, in Minneapolis. Pictured are (front, from left) Connor Bose, Maddux Domagala, Mallory Von Tersch, Kasey Buss, Jaydon Johnson, (back) Kylie Vander Lugt, Averill Sehr, Ella Lanoue, Augusta Papik, Anya Jarchow, Reese Louwagie and Jacy Hart. Not pictured is Kaylee Voorhees.

LHS sends 13 students to state BPA competition

By Mavis Fodness

Membership grew sixfold in the Luverne High School Business Professionals of America (BPA) chapter this year.

As a result, 13 LHS students will compete in various categories at the state BPA convention in Minneapolis starting today, March 9.

"We had two students who have previously participated in BPA and have been excellent leaders and a great resource to our new members," said first-year adviser Katie Kopp.

BPA prepares students for careers in business and information technology through participation in competitive events.

LHS' students placed at the Region 8 contest in January to qualify for the state contest.

Members competing at

the state convention after placing in regional competition are:

- Ella Lanoue, first, digital communications and design.
 - Jacy Hart, Mallory Von Tersch, Averill Sehr, Reese Louwagie, first, podcast production team.
 - Reese Louwagie, second, fundamental accounting.
 - Kylie Vander Lugt, second, entrepreneurship.
 - Kaylee Voorhees, third, interview skills.
 - Anja Jarchow, third, fundamental word processing; fourth, fundamental accounting.
 - Jacy Hart, fifth, health administration.
- Competing in 11 different categories of open testing will be Augusta Papik, Jaydon Johnson, Connor Bose, Kasey Buss and Maddux Domagala.

State winners will represent Minnesota at the National BPA Conference April 26-30 in Anaheim, California.

Kopp said the BPA's move back to in-person competitions increased interest in the organization.

The flex period during the school day also provides another avenue for student involvement.

"Meeting during the day allows the students to attend sports practice, work, or other activities after school," she said.

"The flex period is where our chapter meets and I can help advise students with their events."

In addition to the competitive events, the state convention also provides opportunities for growth through leadership development, education and community service.

Reading/continued from page 6

students," Breuer said. "I believe they are more likely to remember the lesson and much more likely to go home and share both their

experience and the lesson with their families."

After the skit, the seven high school students read Dr. Seuss books in elemen-

tary classrooms and helped with a Dr. Seuss trivia game in fifth-grade classes.

"It was a great day at H-BC," Moore said.

COLLEGE NEWS

Baustian named to dean's list

Claire Baustian, a graduate of Luverne High School, has been named to the dean's list for the Fall 2022 semester at St. Catherine University in St. Paul. To be named, students must achieve a GPA

of 3.667 or higher on a 4.0 scale.

Claire is a first-year student majoring in nursing and is the daughter of Pat and Katie Baustian of Luverne.

Huisman on president's list

Anna Huisman, Luverne, was named to the president's list at Bemidji State University in Bemidji for the Fall

2022 semester. To be eligible, students must earn at least 12 credits with a 4.0 GPA.



Are you looking for child care?



Parent Aware offers free tools and resources to help families find the quality child care programs their children need to succeed in school and life.

ParentAware.org | 888.291.9811

BUILD DAKOTA SCHOLARSHIP FUND

FULL-RIDE SCHOLARSHIPS AVAILABLE

APPLY BY MARCH 31

SOUTHEAST Technical College

605-367-6040 | admissions@southeasttech.edu
SOUTHEASTTECH.EDU/SCHOLARSHIPS

PALACE THEATRE UPCOMING EVENTS

MEGAN M3GAN PG-13

Friday, March 10 7:00 pm
Saturday, March 11 7:00 pm
Sunday, March 12 2:00 pm

Tickets: \$5 for kids age 3 - 12th grade, \$7 for adults

Green Earth Players Present: Alice in Wonderland

March 24 - 26 and March 30 - April 2

TICKETS ON SALE NOW!

104 E. Main St. • Luverne, MN 56156 • 507.283.4339
WWW.PALACETHEATRE.US

Cardinals 'Rock' state wrestling tournament

Four LHS wrestling sibilings earn podium places in 2023 state tournament

By Greg Hoogeveen

The Luverne wrestling program qualified four individual wrestlers for the 2023 State Tournament held at the Xcel Energy Center Friday, March 3, and Saturday, March 4.

The Cardinals sent two boys, senior DJ Rock at 160 pounds and junior Sam Rock at 170 pounds.

They also sent two girls to this year's tournament, freshman Bernie Rock at 114 pounds and eighth-grader CeCe Rock at 138 pounds.

If the last names make you wonder ... yes, all four are sibilings. The Rock family moved to the Luverne School District last year from Colorado.

All four Rocks wrestled in Colorado. DJ placed fifth at state for two years, and Sam qualified for state one year.

Bernie and CeCe had success but were unable to qualify for state competition.

In the boys' tournament that started on March 3, DJ Rock placed fifth in the 160-pound weight class in a bracket of 16 wrestlers.

DJ wrestled six total matches in the tournament, winning four matches by pins and losing two, one by a pin and one by decision.

Sam Rock placed fifth in the 170-pound weight class in a bracket of 16 wrestlers.

Sam won three matches, two by decision and one by pin, and his losses were both by decision.

In the girls' tournament on March 4, CeCe Rock placed fourth in the 138-pound



Greg Hoogeveen photo/0309 LHS rocks

Rock siblings pose at sendoff rally Tuesday, Feb. 28, before heading to St. Paul for 2023 state wrestling competition. From left, eighth-grader CeCe Rock, senior DJ Rock, junior Sam Rock and freshmen Bernie Rock.

weight class in a bracket of eight wrestlers.

CeCe wrestled three matches, winning two by decision and losing one by decision.

Freshman Bernie Rock placed second in

the 114-pound weight class in a bracket of eight wrestlers.

Bernie won two matches, one by pin and one by decision and lost one by decision.

A rundown of the Rocks' matches are as follows:

DJ Rock - 160lb. weight class

Champ. Round 1 - DJ Rock (Luverne) over Kade Gaydon (Blue Earth Area) (Fall 1:04)
Quarterfinals - Tucker Zigan (LPGE-Browerville Wolves) over DJ Rock (Luverne) (Fall 1:02)
Cons. Round 1 - DJ Rock (Luverne) over Jake Nagel (Frazee) (Fall 1:25)
Cons. Round 2 - DJ Rock (Luverne) over Gaven Cimbura (Osakis) (Fall 3:00)
Cons. Semis - Simon Snyder (New York Mills) over DJ Rock (Luverne) (Dec 6-0)
5th Place Match - DJ Rock (Luverne) over Tucker Zigan (LPGE-Browerville Wolves) (Fall 2:48)

Sam Rock - 170lb. weight class

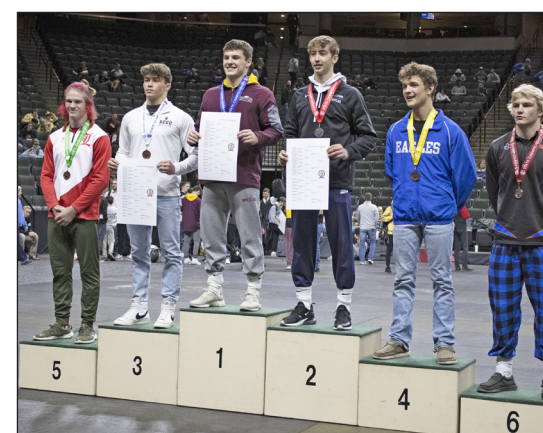
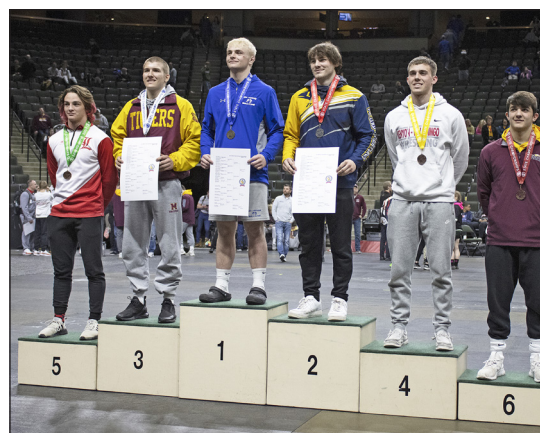
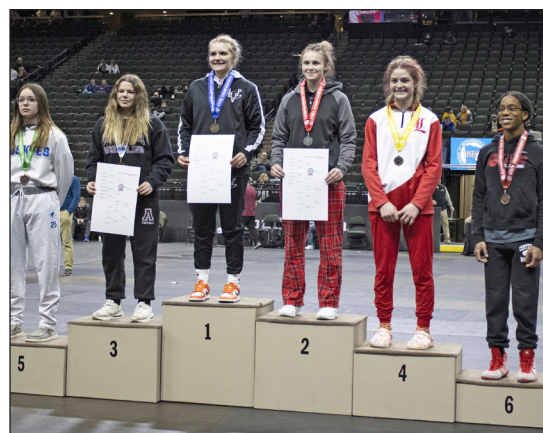
Champ. Round 1 - Maximus Hanson (Belgrade-Brooten-Elrosa) over Sam Rock (Luverne) (Dec 9-2)
Cons. Round 1 - Sam Rock (Luverne) over Preston Mayfield (Frazee) (Fall 3:39)
Cons. Round 2 - Sam Rock (Luverne) over Nick Wagner (Canby) (Dec 6-5)
Cons. Semis - Jaedin Johnson (Kenyon-Wanamingo) over Sam Rock (Luverne) (Dec 4-2)
5th Place Match - Sam Rock (Luverne) over Landon Lehnertz (Dover-Eyota) (Dec 3-1)

Bernie Rock - 114lb. weight class

Quarterfinals - Bernie Rock (Luverne) over Jennifer Nguyen (Fridley) (Fall 3:59)
Semifinals - Bernie Rock (Luverne) over Madelyn Strohmayr (Aitkin) (Dec 4-2)
1st Place Match - Aspen Blasko (Forest Lake) over Bernie Rock (Luverne) (Dec 4-2)

CeCe Rock - 138lb. weight class

Quarterfinals - CeCe Rock (Luverne) over Aliah Fischer (Owatonna) (Dec 8-4)
Semifinals - Abby Ervasti (Bertha-Hewitt-Verdale-Parkers Prairie) over CeCe Rock (Luverne) (Dec 7-2)
3rd Place Match - Alley Altringer (Anoka) over CeCe Rock (Luverne) (MD 11-0)



Lance Ripka submitted photo/0309 wrestling

Left to right, LHS eighth-grader CeCe Rock earned fourth place in girls 138-pound weight class, freshman Bernie Rock earned second place in girls 114-pound weight class, junior Sam Rock earned fifth place in 170-pound weight class and senior DJ Rock finished in fifth place at 160-pound weight class at the 2023 State Wrestling Tournament in St. Paul March 4.

LHS boys' basketball team finishes 2023 season 13-11

By Greg Hoogeveen

The Luverne boys' basketball team ended their post-season hopes at the hands of Redwood Valley Saturday, March 4, in Luverne.

The No. 1 seeded Luverne Cardinals lost a close 68-61 Section 3AA South playoff game to the visiting No. 8 seeded Redwood Valley Cardinals.

Luverne previously beat Redwood twice in the regular season 77-75 at home Dec. 19 and 72-48 in Redwood Jan. 27.

On Saturday the Cardinals had a hard time keeping Redwood players from connecting on 3-point shots, and the visit-

LHS boys basketball/p.13



Greg Hoogeveen photo/0309 LHS BBB cowell

LHS senior Tyson Cowell drives the hoop against Redwood Valley March 4 at home. LHS lost a 68-61 Section 3AA playoff game to Redwood ending their season.

H-BC Patriots end basketball season in section play

By Greg Hoogeveen

The H-BC boys' basketball team traveled to Worthington Saturday, March 4, to take on Murray County Central in Section 3A Tournament play.

The MCC Rebels beat the Patriots 58-39 to advance in the post-season tournament.

H-BC head coach Kale Wiertzema said he was pleased with his team's output this season.

"I do believe we were playing our best basketball toward the end of the year," he said.

The Patriots finished the regular season 11-15 and 6-9 in the Red Rock Conference.

"I am extremely proud of the way this group prepared and

H-BC boys basketball/p.13



Samantha McGaffee photo/0309 HBC BBB Jamin Metzger

H-BC freshman Jamin Metzger drives to the hoop against the MCC Rebels Saturday, March 4, in Worthington. The Patriots lost 58-39 in the Section 3A game to end their 2022-23 season.

Getting a camel through the eye of the needle

By Scott Rall

If you want to start a conversation that has the greatest chance of going sour, all you need to do is to start asking people about wolves in Minnesota.

When you live where I live, in the southwest part of the state, there are no wolves to be concerned about.

If you are a livestock producer in the northern part of the state, it is a totally different matter.

There has never been a species in this state, or any other state for that matter, that has gotten more attention than wolves. Even when the moose population in Minnesota fell to less than 50 percent of what it was only a few short years before, it garnered much less attention than wolves whose populations are growing over management goals. In my opinion, both of these species are the king of their respective worlds.

Wolves have been the subject of more legal attention and action than all of the other species combined over the past 30 years. Wolves were added to the endangered species list many decades ago after they were just about decimated over much of their original range. Many thought the only good wolf was a dead one. I believe that at one time in Minnesota



THE OUTDOORS

By Scott Rall
Outdoors columnist

the total number of wolves was less than 300.

After the addition of federal protection for wolves via the endangered species listing, it was determined that the wolf population would be considered stable and recovered when their numbers reached 1,600 animals across the state. This happened many years ago.

As the goal on wolf numbers had been reached, they no longer needed federal protection. By removing them from the endangered species list, their management would then fall back to the state's natural resources departments. It would then be up to those state wildlife professional to manage wolves in a way so that their numbers would be managed but not lead to the detriment of

the species overall. These state management strategies include limited wolf hunting and trapping.

When Minnesota had its first wolf hunt after delisting more than a decade ago, wolf numbers in Minnesota were estimated to be about 2,500-2,800. Today that number is estimated to be about 2,400. Remember that the species was considered recovered when they hit the 1,600 mark.

Fast-forward from the delisting date and wolves have been added, removed, then added and then removed again about 10 times. All of this flip-flop was a result of judicial action by many different judges in faraway states determining that someone had dropped the ball along the way and that wolves were in danger of again being decimated. There are fierce defenders of wolves and just as many others who think their numbers need to be managed just like any other species in the state, much like deer are.

I don't really have a dog in this fight, but I certainly hate judges making the rules and not state wildlife agency professionals. Wolves are expanding their ranges and they are getting less and less afraid of humans. I saw a door bell cam of two Labradors sitting on their owner's

Outdoors/see p.14

LHS boys' hockey heads to state tournament

By Greg Hoogeveen

The Luverne boys' hockey players were crowned Section 3A Champions Wednesday, March 1, at the Lund Center in St. Peter to win a spot in the Minnesota Class A Boys' State Hockey Tournament.

The Cardinals beat their nemesis, the New Ulm Eagles, 4-2, to move on to state quarter-final competition against Hermantown at the Xcel Energy Center in St. Paul March 8. Game time is 11 a.m.

Luverne faced New Ulm twice in the regular season, losing both games.

In their first meeting on Dec. 9 in New Ulm, the Eagles beat the Cardinals 2-1. In the second game Jan. 26, the Eagles beat the Cardinals 4-1 in Luverne.

In the championship game March 8, Luverne came ready to play and avenge their two season losses to the Eagles.

"In both the semi-finals against Mankato East and the section championship against New Ulm our boys played disciplined and relentless games," head coach Phil Paquette said.

"They did not play tight under pressure or when games got intense - they played unshakable hockey."

The stage was set with the crowd in attendance heavily favoring New Ulm 3 to 1. The Luverne fans were not deterred and cheered on the Cardinals as if they were on home ice.

A minute and 59 seconds after the game puck dropped, senior Brady Bork scored the first goal assisted by junior Elliot Domagala and stunned the New Ulm team and crowd.

New Ulm tied the game at 13:41 in the first period and brought the Eagles crowd back into the game.

At the end of Period 1 the score was tied 1-1.

In the second period sophomore Blaik Bork beat the Eagles goalie on a power play assisted by junior Owen Sugenga and senior Brock Behrend.

The second period closed with Luverne ahead 2-1.

In the third period Blaik Bork scored once again on a power play at 1:10 assisted by Sugenga and Behrend.

At 3:32 in the third, New Ulm was able to get one past LHS goalie junior Tyler Arends to bring the Eagles one goal closer at 3-2.

The Cardinals did not back down, and goalie Arends blocked everything that came at him.

At 9:29 in the third period Elliot Domagala



Greg Hoogeveen photo/0309 bhoc champs

The Cardinals pose with their Section 3A Championship plaque March 1 after beating New Ulm 4-2 in St. Peter. Players are (front, from left) Blaik Bork, Brady Bork, Brock Behrend, Patrick Kroski, Gavin Reisch, Tyler Arends, Xander Remme, (middle) manager Conner Connell, Kaleb Hein, Marcus Vortherms, Maddux Domagala, Owen Sudenga, Ethan Langseth, Sage Viessman, Henry Hartquist, Levi Gonnerman, Alexander Schlosser, (back) Will Serie, Layke Miller, Tucker Dammann, Elliot Domagala, manager Kia Buss, head coach Phil Paquette, assistant coach Kaden Ericson, manager Spencer Kracht, assistant coach Chris DenHoed and manager Jose Medina Najera.

sealed Luverne's win, beating the Eagles goalie one more time assisted by freshman Maddux Domagala.

The Cardinals beat the Eagles 4-2 to punch their ticket to state competition at the Xcel Energy Center Wednesday, March 8.

"Luverne has gotten stronger and more locked in throughout the season and that's what it takes to win section championships and earn a trip to the Minnesota state high school hockey tournament," Piquette said.

"We look ahead to the tourney as one of the greatest experiences a high school athlete can achieve."

Piquette reflected on past tournaments, "Our draw against Hermantown is the third time in three trips to the state tournament."

"In 2014 and 2017 Luverne competed and stood tall against one of the tournament favorites and we expect to do just that this time around - compete and leave it all at the Xcel Energy Center in St. Paul."



Greg Hoogeveen photo/0309 bhoc parents

LHS parents and fans react to Luverne's 4-2 Section 3A Championship win over New Ulm March 1 in St. Peter.

Cardinal girls set sights on section basketball championship

By Greg Hoogeveen

The Luverne girls' basketball team won two big post-season games in the past week to advance to the Section 3AA Championship.

Luverne beat St. James 70-45 in Windom Feb. 28 and took care of Fairmont 54-33 March 2 in Marshall.

Luverne is scheduled to play New London-Spicer for the section championship Friday, March 10, at Southwest Minnesota State University in Marshall.

Game time is 5 p.m.

Head coach TJ Newgard said he's optimistic about his players' post-season success.

"They have earned everything they have gotten, and they are excited for a chance to play in the section championship next week," he said.

LHS 70, St. James 45

The Luverne girls' basketball team traveled to Windom to take on St. James in sub-section play Tuesday, Feb. 28.

The Cardinals beat the Saints 70-45 in commending fashion, leading at half and never looking back.

"We did a really good job of never letting their perimeter players get comfortable," Newgard said.

The Saints had 21 turnovers while shooting only 37 percent inside and 36 percent past the line.

Luverne had a team total of 14 steals, 33 rebounds, 19 points on turnovers and 23 team assists.

"They are deadly from three if you let them get going," Newgard said. "I was proud of our defensive execution."

Luverne was able to spread the ball around, and many players contributed to the win.

Junior Kira John led Luverne with 14 points. She also grabbed eight rebounds, had two assists and three steals.

"I thought Lauren and



Greg Hoogeveen photo/0309 LHS GBB team

The LHS girls' basketball team poses for a photo after their 70-45 win over St. James Feb. 28 in Windom. Pictured are (front, from left) Josi Voorhees, Kiesli Smith, Kayla Blomendaal, Sarah Stegenga, Averill Sehr, Tori Serie, Emma Beyer, (back) manager Kylie Vander Lugt, Dennie Sandbulte, Kira John, Jocelyn Hart, Lauren Hansen, Elizabeth Wagner, Christina Wagner, Jadyen Hart and manager Maria Rops.

Tori were exceptional off the bench," Newgard said.

"Getting 20 points from them is a huge boost and makes us that much more difficult to defend."

Senior Lauren Hansen posted nine points and had two assists.

Junior Tori Serie added 11 points, one rebound and two assists off the bench.

Senior Averill Sehr made 12 points and contributed three rebounds, six assists and three steals in the game.

Senior Christina Wagner added 11 points, four rebounds, two assists and three steals to the Cardinals' win.

Elizabeth Wagner charted nine points, five rebounds, seven assists and two steals.

Senior Emma Beyer and junior Kiesli Smith added two points each. Beyer also had four rebounds, one assist and one steal.

Senior Jocelyn Hart grabbed two rebounds and had one blocked shot.

Junior Sarah Stegenga helped with two rebounds, one steal and one blocked shot.

Juniors Dennie Sandbulte and Kayla Blomendaal each nabbed a rebound, and junior Josie Voorhees added one rebound, one assist and one steal for Luverne.

Senior Jadyen Hart was scoreless Tuesday, but she's credited for team spirit this season, and she came off the bench to hassle the Eagles in the final minutes.

LHS 54, Fairmont 33

The Luverne girls' basketball team traveled to Marshall to take on Fairmont for the Sub-section 3AA Championship at Southwest Minnesota State University Thursday, March 2.

The Cardinals beat Fairmont 54-33 to advance to the Section 3AA Championship Friday, March 10, at SMSU against New London-Spicer at 5 p.m.

"I thought we did a tremendous job of knowing where their best players were and never letting them get going," Newgard said.

"Holding a team to 33 points in a subsection championship game gives you a really good chance to win."

Luverne caused 27 Fair-

Girls basketball/p.13

YOU'RE INVITED TO:

THE 90S REWIND

BLUE MOUND FIGURE SKATERS
32ND ANNUAL · 2023

MARCH 17 7:00 PM
MARCH 18 5:00 PM

BLUE MOUND ICE ARENA · 601 W. HATTING · LUVERNE, MN

ADVANCED TICKETS
\$3.50 | \$7.00
ADULT TICKETS AT DOOR = \$10.00

Luverne Baseball Traveling Team SIGN UP

Monday, March 13
5-7 pm
at **Take 16 Event Center**

Traveling baseball team sign up for anyone grades 3-6 interested in playing traveling baseball, Legion / Jr Legion and Community Education Baseball

Any questions please contact
Tony Sandbulte
507-920-0547

Winter Growth

It's happening beneath the surface, even if it's hard to see now.

You are likely familiar with the adage, "If March comes in like a lion, it will go out like a lamb." I would imagine that is the hope of many of us, as March still feels very much like winter with the decent snowpack on the ground. With the forecast of additional wintery accumulation, one would not be out of order to ask, "Will spring ever come?"

Yet we know that it will. It always does. Spring always follows winter, summer follows spring, fall follows summer, and the seasons come and go every year. The length, intensity, and roller coaster ride of each one can vary, of course, but we can rely on the regular pattern of the four seasons.

It is helpful to remember these objective realities when this winter, in particular, may be testing patience to see sprouts of life emerge from the soil. So, I have often wondered what the purpose of winter was for the natural world. Spring, summer, and fall are easier to see what is happening with times of planting, growth, and harvest. But what grows in the winter?

While the trees and perennial plants around our yard are not doing much in their current state, there is more than meets the eye. First, the excess sugars made during the summer are concentrated in the plant's cells, which work like antifreeze to keep water from damaging the cells when it freezes. Second, the roots below the ground are still developing and storing starches until warmer weather returns.

The Bible uses

BUILT ON A ROCK

By Pastor Joe Steenholdt, Luverne Reformed Church

many illustrations from both agriculture and horticulture. In one instance, in part of Jesus's last discourse with his disciples before going to the cross, he points to the hills of vineyards. He tells his disciples that he is the vine and they are the branches (John 15:5). He tells them that if they abide in him and his words and teachings, they will bear fruit.

Now there may be times like harvest when your life is filled with good fruit and obvious blessings you share with others. But what about those seasons of hardship that seem to stifle the growth or change you want and feel like winter?

Paul also uses horticultural language for God's work of bringing in new believers in Romans 11, which is like grafting branches into a healthy olive tree. He reminds the new believers that they are the branches and solely rely on the root of God's grace. "You do not support the root, but the root supports you." (Rom. 11:18b). God is the source and foundation.

Many of the changes and growth in our lives will not always be noticeable or immediate. So when facing difficult seasons, trust the deep roots of God's eternal promises found throughout the Bible. Like knowing spring will follow winter, we are also assured around this time of year that Easter follows Good Friday.

St. Catherine Catholic Church

203 E. Brown St., Luverne

St. Catherine Ph. 283-8502; www.stscl.org
Monsignor Gerald Kosse, Pastor

Sunday: 8:30 a.m. Mass. Public Mass will be celebrated at FULL capacity in the church. Masses: 9 a.m. Wednesdays, 10 a.m. Friday at the nursing homes — check the bulletin. All Sunday masses will be live streamed on Facebook at <https://www.facebook.com/pg/stccluverne/videos/>. Visit www.stscl.org for more information.

Luverne Christian Reformed Church

605 N. Estey St., Luverne

Office Ph. 283-8482; Prayer Line Ph. 449-5982
www.luverneccr.com — office@luverneccr.com

Joe Steenholdt, Pastor

Sunday: 9:30 a.m. Worship service. 6:30 p.m. Evening worship service. We are streaming Sunday services live on YouTube at 9:30 a.m. and 6:30 p.m. Send him a friend request if you're not connected. You may also visit our website for delayed broadcasts. Also our services are on local cable TV at 5:30 p.m. on Wednesdays and at 6:30 p.m. on Thursdays. In all circumstances, may we joyfully declare: "Our help is in the name of the Lord, the Maker of heaven and earth." Psalm 124:8.

First Baptist Church

103 N. Jackson St., P.O. Box 975, Luverne

Ph. 283-4091; email: fbcluv@iw.net — www.fbcluverne.org

Wait Moser, Pastor

Sundays: 10:30 a.m. In-person worship service. Service is also on Facebook Live at 10:30 a.m.

Grace Lutheran Church

500 N. Kniss Ave., Luverne

Ph. 507-283-4431; www.graceluverne.org — graceluverne@iw.net
Dave Christenson, Interim Pastor

Thursday, March 9: 8:30 a.m. Missions in Action. Sunday, March 12: 9 a.m. Worship Service. 10 a.m. Fellowship Coffee. 10 a.m. Sunday School and Drums. 10 a.m. 5th Grade First Communion class. 4 p.m. MS/HS Youth Gameshow Showdown. 5 p.m. Transitional Task Force meeting. Tuesday, March 14: 9 a.m. Staff meeting. 6:45 p.m. Ministry meetings. 8 p.m. PPC meeting. Wednesday, March 15: 7 a.m. Men's Bible Study. 5-6:30 p.m. Lenten supper. 6:45 p.m. Lenten Service. Online, TV and Radio Worship options are available. Online worship: Sundays 9 a.m. at www.graceluverne.org, click Worship tab; or Facebook page at Grace Lutheran ELCA, Luverne. TV: Vast Channel 3 Mondays at 4:30 p.m. and Fridays at 10 a.m. Radio: KQAD-AM Radio Sundays at 8:15 a.m.

Bethany Lutheran Church

720 N. Kniss Ave., Luverne

Ph. 507-283-4571 or 605-215-9834

Andrew Palmquist, Pastor

Sundays: 9 a.m. Sunday School and Bible class. 10:15 a.m. Worship service; worship online as well (at els.org). Tuesdays, 6:30 p.m. Zoom Bible study. Wednesdays, 7 p.m. Lenten Vespers. See our Facebook page, Bethany Lutheran Church (Luverne) for other classes and events.

American Reformed Church

304 N. Fairview Dr., Luverne

Ph. 507-283-8600; email: office@arcluverne.org

Friday, March 10: 6:30 a.m. Community Men's Bible Study. Sunday, March 12: 9:30 a.m. Worship Service. 10:50 a.m. Sunday School. 11 a.m. Pancake Breakfast. Tuesday, March 14: 12 p.m. Staff meeting. 7 p.m. Consistory meeting. Wednesday, March 15: 5:30 p.m. Midweek meal. 6:30 p.m. Pioneer Clubs and Youth Groups. Thursday, March 16: 9 a.m. Cookie Crew. CommServices are also broadcast on Vast Channel 3 on Mondays at 6 p.m. and Wednesdays at 4 p.m. DVD's available upon request. To stay up to date on announcements, follow us on Facebook and Instagram @arcluverne.

Rock River Community Church

1075 110th Ave., Luverne

Ph. 507-283-9070; email: info@rockrivercommunity.church

Bob Junak, Pastor

Come as you are—Sundays @ 10 a.m.: Main Service. Kids church age 3-6th grade—Nursery. Wednesdays @ 6:30 p.m. Midweek Service—Kids age 3-6th grade.

United Methodist Church

109 N. Freeman Ave., Luverne

Ph. 283-4529

Saturday, March 11: 8 p.m. AA meeting. Sunday, March 12: 9:30 a.m. Adult Sunday school. 10:30 a.m. Worship Service. Prayer Warriors after service. 4:30 p.m. Genesis/Revelation Bible Study. Monday, March 13: 6:30 p.m. Genesis to Revelation Bible Study. Tuesday, March 14: 1:30 p.m. Sewn in Faith. 6 p.m. Teacher's meeting. 7 p.m. Scouts. Wednesday, March 15: 9 a.m. — 7 p.m. Prayer Chapel. 6:15 p.m. FUEL. 6:30 p.m. Confirmation. 7 p.m. Lenten Service at United Methodist. 8 p.m. AA meeting. Live streamed on Facebook and radio.

First Presbyterian Church

302 Central Lane, Luverne

Ph. 283-4787; email: Firstpc@iw.net

Sundays: 9 a.m. Adult Sunday school. 10:15 a.m. Worship service. Youth Sunday school during worship service. In-person Worship

service and live on Facebook. Our Facebook page can be found under First Presbyterian Church of Luverne. We are also on the local Luverne cable station at 10 a.m. and 6 p.m. on Tuesdays and 10 a.m. on Thursdays.

St. John Lutheran Church

803 N. Cedar St., Luverne

Ph. 283-2316; email: stjohn@iw.net

www.stjohnlutheranluverne.org

Saturdays: 5:30 p.m. Worship Service. Sundays: 9 a.m. Worship Service. 10 a.m. Fellowship Time. 10:15 a.m. Sunday School. 10:15 a.m. Adult Bible Study. Wednesdays: 9 a.m. Bible Study. 6:30 p.m. Catechesis Class. 6:30 p.m. Kids for Christ. 7:30 p.m. Youth Group. Services will be available on the Vast Channel 3 Sunday and online at the city website, cityofluverne.org. Holy Communion is offered on 2nd and 4th weekends and Liturgical Feasts.

Living Rock Church

500 E. Main St., Luverne

Ph. 449-0057; www.livingrockswmn.org

Josh Hayden, Pastor

New Life Celebration Church

101 W. Maple, Luverne

Ph. (605) 368-1924; email: newlifecelebration@gmail.com

Zion Evangelical Lutheran Church

305 E. 2nd St., P.O. Box 36, Hardwick

Ph. (507) 669-2855; zionoffice@alliancecom.net

Jesse Baker, Pastor

Sundays: 9 a.m. Worship service. 10:15 a.m. Sunday School. 10:30 a.m. Bible study. Worship service on Luverne cable at 3:30 p.m. every Thursday and Friday.

Ben Clare United Methodist Church

26762 Ben Clare Ave., Valley Springs, S.D.

igtwlb@WOW.net

Bill Bates, Pastor

First Lutheran Church

300 Maple St., Valley Springs, S.D.

Ph. (605) 757-6662 — firstpalisade@alliancecom.net

Mark Eliason, Pastor

Sunday, March 12: 10:30 a.m. Worship at First Lutheran Church. 9:30 a.m. Sunday School. Wednesday, March 15: 7 p.m. Lenten Service at Palisade Lutheran Church. All are welcome. We Are ONLINE! Facebook: @FirstLutheranValley Springs; YouTube: FirstPalisadeLutheranParish.

Palisade Lutheran Church

211 121st St., Garretson, S.D.

Ph. (507) 597-6257 — palisadchurch@alliancecom.net

www.palisadelutheran.org

Thursday, March 9: 1:30 p.m. Palisade WELCA meeting. 7 p.m. Palisade Council meeting. Sunday, March 12: 9 a.m. Worship Service at Palisade Lutheran Church. 10 a.m. Sunday School. Wednesday, March 15: 7 p.m. Lenten service at Palisade Lutheran Church. We Are ONLINE! Facebook: @PalisadeLC; YouTube: FirstPalisadeLutheranParish.

First Presbyterian Church

201 S. 3rd St., P.O. Box 73, Beaver Creek

Ph. 507-935-5025

email: lori.firstpres@gmail.com

Sundays: 9:30 a.m. Worship Service. Second Tuesday of each month, 7 p.m. Session meeting.

Magnolia United Methodist Church

501 E. Luverne St., Magnolia

Ph. 605-215-3429

email: magnoliannumc@gmail.com

Nancy Manning, Pastor

Sundays: 9 a.m., in-person with livestream available on the church's Facebook site.

Steen Reformed Church

112 W. Church Ave., Steen

Ph. 855-2336

Jeremy Wiersema, Pastor

Sundays: 9:30 a.m. and 6 p.m. Worship service in-person with livestream available on Facebook and YouTube. Radio worship on KQAD Sundays at 9:30 a.m.

Bethlehem Lutheran Church

112 N. Main St., Hills

Ph. 962-3270 / bethlehemofhills@gmail.com

Nita Parker, Pastor

Sundays: 9 a.m. Worship at Tuff Chapel. 9 a.m. Sunday school. 10 a.m. Worship Service. Worship will be streamed live to Facebook at Bethlehem of Hills. You can find more info on our website blchills.org.

Hills United Reformed Church

410 S. Central Ave., Hills

Office Ph. 962-3254

hillsurc@alliancecom.net

Alan Camarigg, Pastor

These weekly church page messages are contributed to God's Work through the Church and by these concerned and responsible citizens & businesses:

Call Rick to place your ad!

283-2333

Read us online!

Rock County
STAR HERALD
www.Star-Herald.com

Trust in Him



283-9171
PAPIK.COM

Luverne • Rock Rapids • Sibley



SECURITY SAVINGS BANK

bankwithssb.com 507.449.6000
Member FDIC Luverne, MN



HILLS STAINLESS STEEL & EQUIPMENT CO., INC.
506 W. Koehn, P.O. Box 987, Luverne, MN
PHONE 507-283-4405
Church is Important - Please Attend!



Pipestone • Luverne • Lake Benton • Jasper • Tyler
www.HartquistFuneral.com



507-283-2381 www.buffaloridgeins.com E-mail: info@buffaloridgeins.com



110 E Main, Luverne 507-283-2379

McClure Electric

Alan M. Aanenson, owner
Farm, Home & Commercial Wiring
Luverne, MN Phone 507-283-4716

CWG

Business Insurance.
Tri-State Region *Period!*



Hills, MN • 507-962-3275



Manley Minnesota
1-800-615-3704
Open six days a week • Closed on Sundays
To God be the Glory.



116 East Main Street • Luverne • 507-283-2366
Hwy. 75 • 800 South Kniss • Luverne • 507-283-9131
www.minnwestbank.com • Member FDIC • MoneyLine 888-616 BANK



Advertise Here



We believe in you.
Member FDIC. And the community.
303 E. Main, Luverne, MN
507-283-4463 | www.ffmbank.com

School District #2184 seeks group insurance bids

REQUEST FOR PROPOSALS
Luverne ISD #2184

Notice is hereby given that Luverne ISD #2184 requests proposals for Group Health Insurance.

Specifications will be available from the District's agent of record, National Insurance Services, at 14852 Scenic Heights Road, Suite 210, Eden Prairie, MN 55344, phone 800-627-3660.

Proposals are due no later than 2 p.m. on Tuesday, March 21, 2023, to Luverne ISD #2184 at 709 North Kniss Ave, Luverne, MN 56156 and as specified in the RFP. (03-09, 03-16)

Rock County Highway Dept. seeks sealed proposals by April 3

NOTICE TO CONTRACTORS

BRIDGE REPLACEMENT & APPROACH GRADING / S.A.P. 067-599-185 ETC.
BIDS CLOSE @ 11:00 A.M. APRIL 3, 2023
LIVERNE, MINNESOTA

Sealed "Bid Packets" will be received by the Rock County Highway Department in Luverne, Minnesota until 11:00 A.M. on Monday April 3, 2023.

READ CAREFULLY THE PROVISIONS FOR THE WAGE RATES AS CONTAINED IN THE SPECIAL PROVISIONS, AS THEY WILL AFFECT THIS PROJECT.

Attention is called to the fact that the Contractor must comply with the **Special Equal Employment Opportunity Provisions & Wage Rates** as contained in the Proposal.

Proposals will be opened and read publicly in the presence of the Rock County Highway Engineer at the Rock County Highway Building located at 1120 North Blue Mound Avenue in Luverne, Minnesota immediately following the hour set for receiving bids for the following Rock County Highway work. Bids will be awarded on **Tuesday April 4, 2023**, at the regular Board of Commissioners Meeting.

Construction of Bridges 67K56 & 67K57 / PCST, Box Culverts.

The Major Quantities of Work are: 41 Ft. of 14'x4' PCST, Box Culvert + 2 End Sections; 40 Ft. of 14'x6' PCST, Box Culvert + 2 End Sections; 40 Ft. of 14'x7' PCST, Box Culvert + 2 End Sections; 681 Cu. Yds. Aggregate Backfill & Bedding; 299 Tons Rock Bedding; & 168 Tons Random Riprap Class 2.

Plans, specifications and proposals may be viewed and downloaded on Quest at www.questcdn.com and at the Rock County Highway Department website, www.co.rock.mn.us/highway. Questions may be directed to the office of the Rock County Highway Engineer, 1120 North Blue Mound Avenue, P.O. Box 808, Luverne, MN 56156-0808 / (507) 283 - 5010.

The non-refundable cost for Plans and one proposal will be \$50.00.

Bids must be accompanied by a certified check or corporate surety bond drawn in favor of the Rock County Treasurer in the amount of at least five percent (5%) of the proposal.

Sealed bids shall be clearly marked "PROJECT NO. SAP 067-599-185, Etc."

The Board of Rock County Commissioners reserves the right to reject any or all bids and to waive any defects therein.

Rock County is an Equal Opportunity/Affirmative Action Employer.

Mark R. Sehr, P.E.

Rock County Highway Engineer
(03-09, 03-16, 03-23, 03-30)

Mortgage foreclosure sale set for April 21

NOTICE OF MORTGAGE FORECLOSURE SALE

THE RIGHT TO VERIFICATION OF THE DEBT AND IDENTITY OF THE ORIGINAL CREDITOR WITHIN THE TIME PROVIDED BY LAW IS NOT AFFECTED BY THIS ACTION.

NOTICE IS HEREBY GIVEN that default has occurred in the conditions of the following described mortgage:

DATE OF MORTGAGE: June 24, 2021

ORIGINAL PRINCIPAL AMOUNT OF MORTGAGE: \$78,780.00

MORTGAGOR(S): Noah D. Meyer, a single person

MORTGAGEE: Mortgage Electronic Registration Systems, Inc.

TRANSACTION AGENT: Mortgage Electronic Registration Systems, Inc.

MIN#: 1005210-0808093166-7

LENDER OR BROKER AND MORTGAGE ORIGINATOR STATED ON THE MORTGAGE: Plains Commerce Bank

SERVICER: PennyMac Loan Services, LLC

DATE AND PLACE OF FILING: Filed June 30, 2021, Rock County Recorder, as Document Number 200387

ASSIGNMENTS OF MORTGAGE: Assigned to: PennyMac Loan Services, LLC

LEGAL DESCRIPTION OF PROPERTY:

The South Sixty (S 60) feet of Lot Five (5) in Block Three (3) in Barck, Adams, and Howe's Addition to the City of Luverne, Rock County, Minnesota.

PROPERTY ADDRESS: 703 N Spring Street, Luverne, MN 56156

PROPERTY IDENTIFICATION NUMBER: 20-0258-000

COUNTY IN WHICH PROPERTY IS LOCATED: Rock

THE AMOUNT CLAIMED TO BE DUE ON THE MORTGAGE ON THE DATE OF THE NOTICE: \$87,487.88

THAT all pre-foreclosure requirements have been complied with; that no action or proceeding has been instituted at law or otherwise to recover the debt secured by said mortgage, or any part thereof;

PURSUANT to the power of sale contained in said mortgage, the above described property will be sold by the Sheriff of said county as follows:

DATE AND TIME OF SALE: April 21, 2023, 10:00 A.M.

PLACE OF SALE: Sheriff's Main Office, West Side Sheriff Dept, Front Step, Luverne, MN 56156

to pay the debt secured by said mortgage and taxes, if any, on said premises and the costs and disbursements, including attorneys fees allowed by law, subject to redemption within 6 months from the date of said sale by the mortgagor(s) the personal representatives or assigns.

TIME AND DATE TO VACATE PROPERTY: If the real estate is an owner-occupied, single-family dwelling, unless otherwise provided by law, the date on or before which the mortgagor(s) must vacate the property, if the mortgage is not reinstated under section 580.30 or the property is not redeemed under section 580.23, is 11:59 p.m. on October 21, 2023, or the next business day if October 21, 2023 falls on a Saturday, Sunday or legal holiday..

THE TIME ALLOWED BY LAW FOR REDEMPTION BY THE MORTGAGOR, THE MORTGAGOR'S PERSONAL REPRESENTATIVES OR ASSIGNS, MAY BE REDUCED TO FIVE WEEKS IF A JUDICIAL ORDER IS ENTERED UNDER MINNESOTA STATUTES SECTION 582.032 DETERMINING, AMONG OTHER THINGS, THAT THE MORTGAGED PREMISES ARE IMPROVED WITH A RESIDENTIAL DWELLING OF LESS THAN 5 UNITS, ARE NOT PROPERTY USED FOR AGRICULTURAL PRODUCTION, AND ARE ABANDONED.

THE TIME ALLOWED BY LAW FOR REDEMPTION BY THE MORTGAGOR, THE MORTGAGOR'S PERSONAL REPRESENTATIVES OR ASSIGNS, MAY BE REDUCED TO FIVE WEEKS IF A JUDICIAL ORDER IS ENTERED UNDER MINNESOTA STATUTES SECTION 582.032 DETERMINING, AMONG OTHER THINGS, THAT THE MORTGAGED PREMISES ARE IMPROVED WITH A RESIDENTIAL DWELLING OF LESS THAN 5 UNITS, ARE NOT PROPERTY USED FOR AGRICULTURAL PRODUCTION, AND ARE ABANDONED.

THE TIME ALLOWED BY LAW FOR REDEMPTION BY THE MORTGAGOR, THE MORTGAGOR'S PERSONAL REPRESENTATIVES OR ASSIGNS, MAY BE REDUCED TO FIVE WEEKS IF A JUDICIAL ORDER IS ENTERED UNDER MINNESOTA STATUTES SECTION 582.032 DETERMINING, AMONG OTHER THINGS, THAT THE MORTGAGED PREMISES ARE IMPROVED WITH A RESIDENTIAL DWELLING OF LESS THAN 5 UNITS, ARE NOT PROPERTY USED FOR AGRICULTURAL PRODUCTION, AND ARE ABANDONED.

THE TIME ALLOWED BY LAW FOR REDEMPTION BY THE MORTGAGOR, THE MORTGAGOR'S PERSONAL REPRESENTATIVES OR ASSIGNS, MAY BE REDUCED TO FIVE WEEKS IF A JUDICIAL ORDER IS ENTERED UNDER MINNESOTA STATUTES SECTION 582.032 DETERMINING, AMONG OTHER THINGS, THAT THE MORTGAGED PREMISES ARE IMPROVED WITH A RESIDENTIAL DWELLING OF LESS THAN 5 UNITS, ARE NOT PROPERTY USED FOR AGRICULTURAL PRODUCTION, AND ARE ABANDONED.

THE TIME ALLOWED BY LAW FOR REDEMPTION BY THE MORTGAGOR, THE MORTGAGOR'S PERSONAL REPRESENTATIVES OR ASSIGNS, MAY BE REDUCED TO FIVE WEEKS IF A JUDICIAL ORDER IS ENTERED UNDER MINNESOTA STATUTES SECTION 582.032 DETERMINING, AMONG OTHER THINGS, THAT THE MORTGAGED PREMISES ARE IMPROVED WITH A RESIDENTIAL DWELLING OF LESS THAN 5 UNITS, ARE NOT PROPERTY USED FOR AGRICULTURAL PRODUCTION, AND ARE ABANDONED.

THE TIME ALLOWED BY LAW FOR REDEMPTION BY THE MORTGAGOR, THE MORTGAGOR'S PERSONAL REPRESENTATIVES OR ASSIGNS, MAY BE REDUCED TO FIVE WEEKS IF A JUDICIAL ORDER IS ENTERED UNDER MINNESOTA STATUTES SECTION 582.032 DETERMINING, AMONG OTHER THINGS, THAT THE MORTGAGED PREMISES ARE IMPROVED WITH A RESIDENTIAL DWELLING OF LESS THAN 5 UNITS, ARE NOT PROPERTY USED FOR AGRICULTURAL PRODUCTION, AND ARE ABANDONED.

THE TIME ALLOWED BY LAW FOR REDEMPTION BY THE MORTGAGOR, THE MORTGAGOR'S PERSONAL REPRESENTATIVES OR ASSIGNS, MAY BE REDUCED TO FIVE WEEKS IF A JUDICIAL ORDER IS ENTERED UNDER MINNESOTA STATUTES SECTION 582.032 DETERMINING, AMONG OTHER THINGS, THAT THE MORTGAGED PREMISES ARE IMPROVED WITH A RESIDENTIAL DWELLING OF LESS THAN 5 UNITS, ARE NOT PROPERTY USED FOR AGRICULTURAL PRODUCTION, AND ARE ABANDONED.

THE TIME ALLOWED BY LAW FOR REDEMPTION BY THE MORTGAGOR, THE MORTGAGOR'S PERSONAL REPRESENTATIVES OR ASSIGNS, MAY BE REDUCED TO FIVE WEEKS IF A JUDICIAL ORDER IS ENTERED UNDER MINNESOTA STATUTES SECTION 582.032 DETERMINING, AMONG OTHER THINGS, THAT THE MORTGAGED PREMISES ARE IMPROVED WITH A RESIDENTIAL DWELLING OF LESS THAN 5 UNITS, ARE NOT PROPERTY USED FOR AGRICULTURAL PRODUCTION, AND ARE ABANDONED.

THE TIME ALLOWED BY LAW FOR REDEMPTION BY THE MORTGAGOR, THE MORTGAGOR'S PERSONAL REPRESENTATIVES OR ASSIGNS, MAY BE REDUCED TO FIVE WEEKS IF A JUDICIAL ORDER IS ENTERED UNDER MINNESOTA STATUTES SECTION 582.032 DETERMINING, AMONG OTHER THINGS, THAT THE MORTGAGED PREMISES ARE IMPROVED WITH A RESIDENTIAL DWELLING OF LESS THAN 5 UNITS, ARE NOT PROPERTY USED FOR AGRICULTURAL PRODUCTION, AND ARE ABANDONED.

THE TIME ALLOWED BY LAW FOR REDEMPTION BY THE MORTGAGOR, THE MORTGAGOR'S PERSONAL REPRESENTATIVES OR ASSIGNS, MAY BE REDUCED TO FIVE WEEKS IF A JUDICIAL ORDER IS ENTERED UNDER MINNESOTA STATUTES SECTION 582.032 DETERMINING, AMONG OTHER THINGS, THAT THE MORTGAGED PREMISES ARE IMPROVED WITH A RESIDENTIAL DWELLING OF LESS THAN 5 UNITS, ARE NOT PROPERTY USED FOR AGRICULTURAL PRODUCTION, AND ARE ABANDONED.

THE TIME ALLOWED BY LAW FOR REDEMPTION BY THE MORTGAGOR, THE MORTGAGOR'S PERSONAL REPRESENTATIVES OR ASSIGNS, MAY BE REDUCED TO FIVE WEEKS IF A JUDICIAL ORDER IS ENTERED UNDER MINNESOTA STATUTES SECTION 582.032 DETERMINING, AMONG OTHER THINGS, THAT THE MORTGAGED PREMISES ARE IMPROVED WITH A RESIDENTIAL DWELLING OF LESS THAN 5 UNITS, ARE NOT PROPERTY USED FOR AGRICULTURAL PRODUCTION, AND ARE ABANDONED.

THE TIME ALLOWED BY LAW FOR REDEMPTION BY THE MORTGAGOR, THE MORTGAGOR'S PERSONAL REPRESENTATIVES OR ASSIGNS, MAY BE REDUCED TO FIVE WEEKS IF A JUDICIAL ORDER IS ENTERED UNDER MINNESOTA STATUTES SECTION 582.032 DETERMINING, AMONG OTHER THINGS, THAT THE MORTGAGED PREMISES ARE IMPROVED WITH A RESIDENTIAL DWELLING OF LESS THAN 5 UNITS, ARE NOT PROPERTY USED FOR AGRICULTURAL PRODUCTION, AND ARE ABANDONED.

THE TIME ALLOWED BY LAW FOR REDEMPTION BY THE MORTGAGOR, THE MORTGAGOR'S PERSONAL REPRESENTATIVES OR ASSIGNS, MAY BE REDUCED TO FIVE WEEKS IF A JUDICIAL ORDER IS ENTERED UNDER MINNESOTA STATUTES SECTION 582.032 DETERMINING, AMONG OTHER THINGS, THAT THE MORTGAGED PREMISES ARE IMPROVED WITH A RESIDENTIAL DWELLING OF LESS THAN 5 UNITS, ARE NOT PROPERTY USED FOR AGRICULTURAL PRODUCTION, AND ARE ABANDONED.

THIS IS A COMMUNICATION FROM A DEBT COLLECTOR (03-02, 03-09, 03-16, 03-23, 03-30, 04-06)

Mortgage foreclosure sale set for Feb. 23, 2023

NOTICE OF MORTGAGE FORECLOSURE SALE

THE RIGHT TO VERIFICATION OF THE DEBT AND IDENTITY OF THE ORIGINAL CREDITOR WITHIN THE TIME PROVIDED BY LAW IS NOT AFFECTED BY THIS ACTION.

NOTICE IS HEREBY GIVEN, that default has occurred in the conditions of the following described mortgage:

Mortgagor: Manuel Olson, A Single Person

Mortgagee: Mortgage Electronic Registration Systems, Inc., as mortgagee, as nominee for Reliabank Dakota, its successors and assigns

Dated: September 25, 2018

Recorded: September 27, 2018

Rock County Recorder Document No. 193501

Assigned To: Citizens Bank, N.A.

Dated: October 14, 2020

Recorded: October 15, 2020

Rock County Recorder Document No. 198166

Transaction Agent: Mortgage Electronic Registration Systems, Inc.

Transaction Agent Mortgage Identification Number: 10113490000029609

Lender or Broker: Reliabank Dakota, a Corporation

Residential Mortgage Servicer: Citizens Bank

Mortgage Originator: Reliabank Dakota, a Corporation

LEGAL DESCRIPTION OF PROPERTY: LOT 2 IN BLOCK 2 IN AUDITOR'S PLAT NO. 2 IN THE SW 1/4 OF SECTION 2 IN TOWNSHIP 102 NORTH OF RANGE 45 WEST OF THE 5TH PM, ROCK COUNTY, MINNESOTA.

This is Abstract Property.

TAX PARCEL NO.: 20-0215-000

ADDRESS OF PROPERTY:

728 N Estey St

Luverne, MN 56156

COUNTY IN WHICH PROPERTY IS LOCATED: Rock

ORIGINAL PRINCIPAL AMOUNT OF MORTGAGE: \$85,877.00

AMOUNT DUE AND CLAIMED TO BE DUE AS OF DATE OF NOTICE: \$102,709.00

That prior to the commencement of this mortgage foreclosure proceeding Mortgagee/Assignee of Mortgagee complied with all notice requirements as required by statute; that no action or proceeding has been instituted at law or otherwise to recover the debt secured by said mortgage, or any part thereof;

PURSUANT to the power of sale contained in said mortgage, the above described property will be sold by the Sheriff of said county as follows:

DATE AND TIME OF SALE: February 23, 2023, 10:00 A.M.

PLACE OF SALE: Lobby of Rock County Law Enforcement Center, 1000 N Blue Mound Ave, Luverne, MN

to pay the debt then secured by said Mortgage, and taxes, if any, on said premises, and the costs and disbursements, including attorneys' fees allowed by law subject to redemption within 6 Months from the date of said sale by the mortgagor(s), their personal representatives or assigns.

DATE TO VACATE PROPERTY: The date on or before which the mortgagor must vacate the property if the mortgage is not reinstated under Minnesota Statutes section 580.30 or the property redeemed under Minnesota Statutes section 580.23 is August 23, 2023 at 11:59 p.m. If the foregoing date is a Saturday, Sunday or legal holiday, then the date to vacate is the next business day at 11:59 p.m.

MORTGAGOR(S) RELEASED FROM FINANCIAL OBLIGATION ON MORTGAGE: NONE

THE TIME ALLOWED BY LAW FOR REDEMPTION BY THE MORTGAGOR, THE MORTGAGOR'S PERSONAL REPRESENTATIVES OR ASSIGNS, MAY BE REDUCED TO FIVE WEEKS IF A JUDICIAL ORDER IS ENTERED UNDER MINNESOTA STATUTES SECTION 582.032 DETERMINING, AMONG OTHER THINGS, THAT THE MORTGAGED PREMISES ARE IMPROVED WITH A RESIDENTIAL DWELLING OF LESS THAN FIVE UNITS, ARE NOT PROPERTY USED IN AGRICULTURAL PRODUCTION, AND ARE ABANDONED.

THE TIME ALLOWED BY LAW FOR REDEMPTION BY THE MORTGAGOR, THE MORTGAGOR'S PERSONAL REPRESENTATIVES OR ASSIGNS, MAY BE REDUCED TO FIVE WEEKS IF A JUDICIAL ORDER IS ENTERED UNDER MINNESOTA STATUTES SECTION 582.032 DETERMINING, AMONG OTHER THINGS, THAT THE MORTGAGED PREMISES ARE IMPROVED WITH A RESIDENTIAL DWELLING OF LESS THAN FIVE UNITS, ARE NOT PROPERTY USED IN AGRICULTURAL PRODUCTION, AND ARE ABANDONED.

THE TIME ALLOWED BY LAW FOR REDEMPTION BY THE MORTGAGOR, THE MORTGAGOR'S PERSONAL REPRESENTATIVES OR ASSIGNS, MAY BE REDUCED TO FIVE WEEKS IF A JUDICIAL ORDER IS ENTERED UNDER MINNESOTA STATUTES SECTION 582.032 DETERMINING, AMONG OTHER THINGS, THAT THE MORTGAGED PREMISES ARE IMPROVED WITH A RESIDENTIAL DWELLING OF LESS THAN FIVE UNITS, ARE NOT PROPERTY USED IN AGRICULTURAL PRODUCTION, AND ARE ABANDONED.

THE TIME ALLOWED BY LAW FOR REDEMPTION BY THE MORTGAGOR, THE MORTGAGOR'S PERSONAL REPRESENTATIVES OR ASSIGNS, MAY BE REDUCED TO FIVE WEEKS IF A JUDICIAL ORDER IS ENTERED UNDER MINNESOTA STATUTES SECTION 582.032 DETERMINING, AMONG OTHER THINGS, THAT THE MORTGAGED PREMISES ARE IMPROVED WITH A RESIDENTIAL DWELLING OF LESS THAN FIVE UNITS, ARE NOT PROPERTY USED IN AGRICULTURAL PRODUCTION, AND ARE ABANDONED.

THE TIME ALLOWED BY LAW FOR REDEMPTION BY THE MORTGAGOR, THE MORTGAGOR'S PERSONAL REPRESENTATIVES OR ASSIGNS, MAY BE REDUCED TO FIVE WEEKS IF A JUDICIAL ORDER IS ENTERED UNDER MINNESOTA STATUTES SECTION 582.032 DETERMINING, AMONG OTHER THINGS, THAT THE MORTGAGED PREMISES ARE IMPROVED WITH A RESIDENTIAL DWELLING OF LESS THAN FIVE UNITS, ARE NOT PROPERTY USED IN AGRICULTURAL PRODUCTION, AND ARE ABANDONED.

THE TIME ALLOWED BY LAW FOR REDEMPTION BY THE MORTGAGOR, THE MORTGAGOR'S PERSONAL REPRESENTATIVES OR ASSIGNS, MAY BE REDUCED TO FIVE WEEKS IF A JUDICIAL ORDER IS ENTERED UNDER MINNESOTA STATUTES SECTION 582.032 DETERMINING, AMONG OTHER THINGS, THAT THE MORTGAGED PREMISES ARE IMPROVED WITH A RESIDENTIAL DWELLING OF LESS THAN FIVE UNITS, ARE NOT PROPERTY USED IN AGRICULTURAL PRODUCTION, AND ARE ABANDONED.

Dated: December 21, 2022

Citizens Bank, N.A., Assignee of Mortgagee

By: HALLIDAY, WATKINS & MANN, P.C.

Attorneys for:

Citizens Bank, N.A., Assignee of Mortgagee

1333 Northland Drive, Suite 205

Mendota Heights, MN 55120

801-355-2886

651-228-1753 (fax)

THIS COMMUNICATION IS FROM A DEBT COLLECTOR ATTEMPTING TO COLLECT A DEBT. ANY INFORMATION OBTAINED WILL BE USED FOR THAT PURPOSE.

MN21097. (12-29, 01-05, 01-12, 01-19, 01-26, 02-02)

Notice of postponement of mortgage foreclosure sale

NOTICE IS HEREBY GIVEN, that the above Mortgage Foreclosure Sale is hereby postponed to March 15, 2023, at 10 a.m., Lobby at Rock County Law Enforcement Center, 1000 N. Blue Mound Ave., Luverne, MN in said County and State.

Dated: February 28, 2023

By: Halliday, Watkins & Mann, P.C.

Attorneys for:

Citizens Bank, N.A., Assignee of Mortgagee

1333 Northland Drive, Suite 205

Mendota Heights, MN 55120

801-355-2886

MN21097

(03-09)

Mortgage foreclosure sale set for April 27, 2023

NOTICE OF MORTGAGE FORECLOSURE SALE

NOTICE IS HEREBY GIVEN that default has occurred in the conditions of the following described mortgage:

DATE OF MORTGAGE: February 9, 2012

ORIGINAL PRINCIPAL AMOUNT OF MORTGAGE: \$240,000.00

MORTGAGOR(S): Justin Birger, Her Husband and Laressa Birger, His Wife

MORTGAGEE: Mortgage Electronic Registration Systems, Inc., as mortgagee, as nominee for Dacotah Bank, its successors and assigns

DATE AND PLACE OF RECORDING:

Recorded: February 21, 2012 Rock County Recorder

Document Number: 178607

ASSIGNMENTS OF MORTGAGE:

And assigned to: Colonial Savings, F.A.

Dated: January 19, 2017

Recorded: February 13, 2017 Rock County Recorder

Document Number: 190119

Transaction Agent: Mortgage Electronic Registration Systems, Inc.

Transaction Agent Mortgage Identification Number: 10079350000021541

Lender/Broker/Mortgage Originator: Dacotah Bank

Residential Mortgage Servicer: Colonial Savings, FA

COUNTY IN WHICH PROPERTY IS LOCATED: Rock

Property Address: 302 E 7th St, Hills, MN 56138

Tax Parcel ID Number: 15-0316-000

LEGAL DESCRIPTION OF PROPERTY: Lot Three (3) and Four (4) in Block Two (2) of Parkview Second Addition to the City of Hills, Rock County, Minnesota

AMOUNT DUE AND CLAIMED TO BE DUE AS OF DATE OF NOTICE: \$196,278.85

THAT all pre-foreclosure requirements have been complied with; that no action or proceeding has been instituted at law or otherwise to recover the debt secured by said mortgage, or any part thereof; that this is registered property;

or proceeding has been instituted at law or otherwise to recover the debt secured by said mortgage, or any part thereof; that this is registered property;

PURSUANT to the power of sale contained in said mortgage, the above-described property will be sold by the Sheriff of said county as follows:

DATE AND TIME OF SALE: April 27, 2023, at 10:00 A.M.

PLACE OF SALE: County Sheriff's office, in the lobby of the Rock County Law Enforcement Center, 1000 N. Blue Mound Avenue, Luverne, Minnesota

to pay the debt secured by said mortgage and taxes, if any, on said premises and the costs and disbursements, including attorney fees allowed by law, subject to redemption within six (6) months from the date of said sale by the mortgagor(s), their personal representatives or assigns.

If the Mortgage is not reinstated under Minn. Stat. §580.30 or the property is not redeemed under Minn. Stat. §580.23, the Mortgagor must vacate the property on or before 11:59 p.m. on October 27, 2023, or the next business day if October 27, 2023 falls on a Saturday, Sunday or legal holiday.

Mortgagor(s) released from financial obligation: NONE

THIS COMMUNICATION IS FROM A DEBT COLLECTOR ATTEMPTING TO COLLECT A DEBT. ANY INFORMATION OBTAINED WILL BE USED FOR THAT PURPOSE.

THE RIGHT TO VERIFICATION OF THE DEBT AND IDENTITY OF THE ORIGINAL CREDITOR WITHIN THE TIME PROVIDED BY LAW IS NOT AFFECTED BY THIS ACTION.

THE TIME ALLOWED BY LAW FOR REDEMPTION BY THE MORTGAGOR, THE MORTGAGOR'S PERSONAL REPRESENTATIVES OR ASSIGNS, MAY BE REDUCED TO FIVE WEEKS IF A JUDICIAL ORDER IS ENTERED UNDER MINNESOTA STATUTES SECTION 582.032 DETERMINING, AMONG OTHER THINGS, THAT THE MORTGAGED PREMISES ARE IMPROVED WITH A RESIDENTIAL DWELLING OF LESS THAN FIVE UNITS, ARE NOT PROPERTY USED IN AGRICULTURAL PRODUCTION, AND ARE ABANDONED.

THE TIME ALLOWED BY LAW FOR REDEMPTION BY THE MORTGAGOR, THE MORTGAGOR'S PERSONAL REPRESENTATIVES OR ASSIGNS, MAY BE REDUCED TO FIVE WEEKS IF A JUDICIAL ORDER IS ENTERED UNDER MINNESOTA STATUTES SECTION 582.032 DETERMINING, AMONG OTHER THINGS, THAT THE MORTGAGED PREMISES ARE IMPROVED WITH A RESIDENTIAL DWELLING OF LESS THAN FIVE UNITS, ARE NOT PROPERTY USED IN AGRICULTURAL PRODUCTION, AND ARE ABANDONED.

THE TIME ALLOWED BY LAW FOR REDEMPTION BY THE MORTGAGOR, THE MORTGAGOR'S PERSONAL REPRESENTATIVES OR ASSIGNS, MAY BE REDUCED TO FIVE WEEKS IF A JUDICIAL ORDER IS ENTERED UNDER MINNESOTA STATUTES SECTION 582.032 DETERMINING, AMONG OTHER THINGS, THAT THE MORTGAGED PREMISES ARE IMPROVED WITH A RESIDENTIAL DWELLING OF LESS THAN FIVE UNITS, ARE NOT PROPERTY USED IN AGRICULTURAL PRODUCTION, AND ARE ABANDONED.

THE TIME ALLOWED BY LAW FOR REDEMPTION BY THE MORTGAGOR, THE MORTGAGOR'S PERSONAL REPRESENTATIVES OR ASSIGNS, MAY BE REDUCED TO FIVE WEEKS IF A JUDICIAL ORDER IS ENTERED UNDER MINNESOTA STATUTES SECTION 582.032 DETERMINING, AMONG OTHER THINGS, THAT THE MORTGAGED PREMISES ARE IMPROVED WITH A RESIDENTIAL DWELLING OF LESS THAN FIVE UNITS, ARE NOT PROPERTY USED IN AGRICULTURAL PRODUCTION, AND ARE ABANDONED.

THE TIME ALLOWED BY LAW FOR REDEMPTION BY THE MORTGAGOR, THE MORTGAGOR'S PERSONAL REPRESENTATIVES OR ASSIGNS, MAY BE REDUCED TO FIVE WEEKS IF A JUDICIAL ORDER IS ENTERED UNDER MINNESOTA STATUTES SECTION 582.032 DETERMINING, AMONG OTHER THINGS, THAT THE MORTGAGED PREMISES ARE IMPROVED WITH A RESIDENTIAL DWELLING OF LESS THAN FIVE UNITS, ARE NOT PROPERTY USED IN AGRICULTURAL PRODUCTION, AND ARE ABANDONED.

DATED: March 1, 2023

MORTGAGEE: Colonial Savings, F.A.

Wilford, Geske & Cook, P.A.

<

Star Herald PUBLIC NOTICES

Page 12 March 9, 2023

...continued from previous page

Dewild, Grant, Reckert Engineering - \$1,000 for Robotics
Millwrights & Machinery Erectors - \$350 for Robotics
Darold and Helen Laabs - \$500 for Elementary Media Center
American Legion Post 478 - Hardwick - \$1,000 for Robotics
I & S Group - \$350 for Robotics
Viking Electric - \$100 for Robotics
JSA Consulting - \$100 for Robotics
Skattum Confinement Systems - \$100 for Robotics
Cattnach Insurance Agency - \$100 for Robotics
All State Realty - \$75 for Robotics
Donors Choose - Clean Up Do Our Part Supplies for Molly Carbonneau's Classroom
Motion unanimously carried.

Election of officers was conducted. Eric Hartman nominated Tim Jarchow as Chairperson. Motion made by Ryan DeBates, second by David Wrigg, to approve Tim Jarchow as Chairperson. Motion unanimously carried. Chairperson Jarchow took over the meeting. Tim Jarchow nominated Eric Hartman as Vice-Chairperson. Motion made by David Wrigg, second by Zach Nolz, to approve Eric Hartman as Vice-Chairperson. Motion unanimously carried. Eric Hartman nominated David Wrigg as Clerk. Motion made by Ryan DeBates, second by Randy Saker, to approve David Wrigg as Clerk. Motion unanimously carried. Eric Hartman nominated Michael DeBates as Treasurer. Motion made by Zach Nolz, second by Eric Hartman, to approve Michael DeBates as Treasurer. Motion unanimously carried.

Matt Knips from Dewild, Grant and Reckert Engineering reviewed the proposed parking lots project with the School Board. It was noted that information and discussion had been held at a November meeting. The project is divided into 4 parcels - Elementary bus parking lot, Bus garage parking lot, South West student/staff parking lot and South East student/staff parking lot. Estimated cost for all four projects is \$1,851,000.00. The cost estimate is for concrete parking lots. It was recommended that the School Board set a base bid for the Elementary bus parking lot and the Bus Garage parking lot with alternate bids for each of the student/staff parking lots. This will give the School Board a little flexibility depending on how the bids are priced. Motion made by Randy Saker, second by Eric Hartman, to call for bids for the parking lot projects with discussion on bids received at the February 23 school board meeting. Motion unanimously carried.

Justin McGraw with Conway, Deuth and Schmiessing, PLLP, reviewed the 2021-2022 Fiscal Year Audit Report with the School Board members via zoom. The School District general fund expenditures did exceed the general fund revenues as planned. The School District's expenditures will exceed revenues again in the 2022-2023 fiscal year, but will taper off after those planned projects are completed. The Food Service fund recovered from the 2020-2021 fiscal year deficit and now has a positive fund balance. The Community Service Fund had a slight decrease in fund balance. Fund balances as of June 30, 2022, were noted as follows: General Fund - \$9,662,500; Food Service Fund - \$98,750; Community Service Fund - \$134,011; for a grand total of \$9,895,261. Motion made by Ryan DeBates, second by Eric Hartman, to accept the Fiscal Year 2021-2022 Audit Report as presented. Motion unanimously carried.

Business Manager Tyler Reisch reviewed the school district and student activity bills. Motion made by Michael DeBates, second by Zach Nolz, to approve payment of the bills as presented in the amount \$3,236,367.21. Motion unanimously carried.

Motion made by David Wrigg, second by Ryan DeBates, to receive the Student Activity report showing the balances as of December 31, 2022. Motion unanimously carried.

The proposed Committee Assignments were reviewed. Motion made by Eric Hartman, second by Randy Saker, to approve the committee assignments as presented. Motion unanimously carried.

Motion made by Zach Nolz, second by David Wrigg, to approve the following: RESOLUTION DIRECTING THE ADMINISTRATION TO MAKE RECOMMENDATIONS FOR REDUCTIONS IN PROGRAMS AND POSITIONS AND REASONS THEREFORE

WHEREAS, the financial condition of the School District dictates that the School Board must reduce expenditures, and,

WHEREAS, there has been a reduction in student enrollment, and WHEREAS, this (reduction of expenditures) and (decrease in student enrollment) must include discontinuance of positions and discontinuance or curtailment of programs, and,

WHEREAS, a determination must be made as to which teachers' contract must be terminated and not renewed and which teachers may be placed on unrequested leave of absence without pay or fringe benefits in effecting discontinuance of positions;
BE IT RESOLVED, by the School Board of Independent School District No. 2184, as follows:

That the School Board hereby directs the Superintendent of Schools and administration to consider the discontinuance of programs or positions (to effectuate economies in the School District and reduce expenditures) and, (as a result of reduction in enrollment), make recommendations to the School Board for discontinuance of programs, curtailment of programs, discontinuance of positions or curtailment of positions. Motion unanimously carried.

Motion made by David Wrigg, second by Zach Nolz, to approve the custodial seniority list as presented. Motion unanimously carried. Motion made by Ryan DeBates, second by Eric Hartman, to approve the Paraprofessional/Food Service/Administrative Assistant seniority list as presented. Motion unanimously carried. Motion made by Eric Hartman, second by David Wrigg, to approve the Alternative School seniority list as presented. Motion unanimously carried. Motion made by Ryan DeBates, second by David Wrigg, to approve the ECFE/Learning Readiness/Discovery Time seniority list as presented. Motion unanimously carried. Motion made by Eric Hartman, second by Zach Nolz to approve the preliminary licensed staff seniority list as presented. This will be posted for staff to review for 30 days. Motion unanimously carried.

Motion made by David Wrigg, second by Zach Nolz, to accept the resignation of Olga Blyas Food Service Worker effective January 12, 2023. Motion unanimously carried.

Motion made by Ryan DeBates, second by David Wrigg, to accept the resignation of Angela Sneller, Elementary Administrative Assistant, effective January 27, 2023. Motion unanimously carried.

Motion made by Ryan DeBates, second by Eric Hartman, to approve the hiring of Sara Gorter as Speech-Language Pathologist beginning with the 2023-2024 school year. Motion unanimously carried.

Motion made by Michael DeBates, second by Zach Nolz, to accept the resignation of Danielle Watts-Boll as Paraprofessional effective February 6, 2023. Motion unanimously carried.

Motion made by David Wrigg, second by Zach Nolz, to approve the hiring of Nathan Rud as Head Boys Tennis coach. Motion unanimously carried.

Motion made by Eric Hartman, second by Ryan DeBates, to accept the resignation of Meegan Gyberg as Paraprofessional effective February 8, 2023. Motion unanimously carried.

Motion made by David Wrigg, second by Zach Nolz, to approve the hiring of Bergin Flom as Assistant Gymnastics coach for the remaining five weeks of the season due to Chris Nowatki's medical issues. Motion unanimously carried.

Committee reports were given. Eric Hartman reported on the Agriculture Scholarship committee meeting. They awarded four scholarships for a total of \$4,000. Tim Jarchow reported the Staff Development committee met to finalize plans for the January 16 inservice. Those members who attended the Minnesota School Board Association convention felt it was a very worthwhile convention.

The upcoming meeting dates were reviewed. Motion made by Eric Hartman, second by David Wrigg, to adjourn the meeting. Motion unanimously carried. Dated: January 26, 2023

David Wrigg, Clerk
(03-09)

Rock County Commissioners meet Feb. 7

Herred Board Room 9:00 A.M.
Rock County Courthouse Feb. 7, 2023

The meeting was called to order by Chair Thompson with Commissioners Overgaard, Williamson, Burger and Reisch present. Also in attendance were County Attorney Jeff Haubrich and Deputy Administrator Susan Skattum and Mavis Fodness.

The Pledge of Allegiance was recited by those in attendance. Motion by Overgaard, seconded by Reisch, to approve the February 07, 2023, County Board agenda, declared carried on a voice vote.

Motion by Burger, seconded by Williamson, to approve the January 17, 2023 County Board minutes, declared carried on a voice vote.

Motion by Overgaard, seconded by Reisch, to approve the consent agenda, declared carried on a voice vote.

1. Safe Assure Renewal - \$7,382.68; service contract agreement for safety training and compliance.

Adam Buss, New York Life Insurance Company Registered Representative, informed the County Board of a variety of benefits to offer to Rock County employees to include a whole life insurance option; Mr. Buss requested the opportunity to give Rock County a quote. After considerable discussion, the request was tabled.

Ashley Kurtz, Auditor/Treasurer presented the claims and per diems of \$900.00; motion by Overgaard, seconded by Burger, to approve the claims and per diems, declared carried on a voice vote. A complete listing of the claims is available upon request at the Auditor/Treasurer's office.

FEBRUARY 7, 2023 CLAIMS OVER \$2,000

A & B BUSINESS INC	\$2,849.60
AMC / MACA	7,875.00
CONVERGINT TECHNOLOGIES LLC	10,000.00
ELLIS & EASTERN	13,912.50
ERICKSON ENGINEERING	10,050.50
HOWES OIL CO	3,961.50
LITTLE FALLS MACHINE INC	3,321.66
LUVERNE/CITY OF	29,558.37
MORRIS ELECTRONICS	10,076.30
MOTOROLA SOLUTIONS INC	6,825.00
NOBLES COUNTY AUDITOR-TREASURER	5,580.00
PLUM CREEK LIBRARY SYSTEM	3,250.00
PRODUCTIVITY PLUS ACCOUNT	4,740.36
REVIZE LLC	2,200.00
ROCK COUNTY OPPORTUNITIES	3,251.37
RURAL MN ENERGY BOARD	2,500.00
SAFEASSURE CONSULTANTS INC	7,382.68
SHORT-ELLIOTT-HENDRICKSON, INC	4,270.29
SOUTHWEST HEALTH & HUMAN SERVICES	34,600.98
STAPLES ENTERPRISES INC	4,717.26
SW REGIONAL SOLID WASTE COMMISSION	2,500.00
TRANSOURCE TRUCK & EQUIPMENT INC	4,184.17
WIDSETH SMITH NOLTING & ASSOC, INC	10,014.00
ZIEGLER INC	37,246.07
87 PAYMENTS LESS THAN \$2,000	36,740.73
TOTAL	\$261,608.34

The County Board was in receipt of the Fund Balance report which reflected the last settlement of the 2022 property tax collection, and bond payments for Northland Securities. Motion by Reisch, seconded by Thompson, to approve the Fund Balance, declared carried on a voice vote.

The County Board was in receipt of a Gravel Tax Collection & Distribution report for Y2022; the total collected for 2022 was \$186,532.23, an increase of twenty-eight percent from 2021. The gravel tax revenue was distributed as follows:

Road & Bridge	75,312.44
Special Reserve Fund	26,580.85
Admin Fees	9,326.50
Townships	75,312.44

The County Board was in receipt of a year to date report identifying how Rock County has spent their \$1,809,330 in ARPA Funds and \$50,000 in Local Assistance & Tribal Consistency Funds; distribution is as follows:

Rock County Ag Society	Fair COVID Expenses	41,074.00
Alliance Communications	Fiber Construction	31,600.00
Rock County Ag Society	State Contribution	81,686.00
Service Master Recovery Management	Duct Cleaning	62,563.20
City of Hills	Initial Allocation	100,000.00
City of Beaver Creek	Initial Allocation	18,538.00
City of Beaver Creek	Initial Allocation	81,462.00
City of Steen	Initial Allocation	100,000.00
Sanford Luverne Medical Center	Power Lift	42,402.05
City of Magnolia	Initial Allocation	100,000.00
City of Hardwick	Initial Allocation	100,000.00
City of Kenneth	Initial Allocation	100,000.00
Generations	Room Rental	325.00
Rock County EDA	Initial Allocation	50,000.00
Rock County EDA	Initial Allocation	25,000.00
City of Hills	Initial Allocation	100,000.00
City of Luverne	Initial Allocation	100,000.00
*Rock County Rural Water	Application pending	100,000.00
*Lincoln Pipestone Rural Water	Application pending	100,000.00
Remaining Balance ARPA		474,679.75

The Auditor/Treasurer requested approval to re-issue lost warrant #10214, payable to Lewis & Clark for the amount of \$13,354.27; motion by Reisch, seconded by Williamson, to approve, declared carried on a voice vote.

The Auditor/Treasurer led a discussion regarding election voting options and whether or not to eliminate the mail ballot process; precincts would replace the mail ballot process with a designated polling place for each precinct, equipped with electronic ballot machines and judges. The Auditor/Treasurer also identified how precinct locations can be shared, along with election judges, but rosters and ballots may be an issue at a shared location. Before any changes are implemented, it was determined to schedule a meeting for townships and small city officials to attend to determine if any changes need to be made.

Mark Sehr, Engineer, requested to approve Resolution No. 03-23, a bridge priority listing for replacement or major rehabilitation and authorizing MnDOT to release funds from with the Town Bridge Account or the State Transportation Fund. Motion by Burger, seconded by Overgaard, to approve, declared carried on a voice vote.

The County Board reviewed a previous request from the City of Luverne for a contribution of \$1,000,000 for the proposed daycare building renovation project. Motion by Reisch, to pledge \$450,000 of the county's ARPA funds to the Daycare project; Commissioner Thompson seconded the motion and called for a roll call vote with Commissioners Thompson and Reisch voting aye and Commissioners Williamson, Overgaard and Burger voting nay; motion failed. Additional conversation followed resulting in a motion by Commissioner Overgaard to pledge \$250,000 payable immediately and an additional \$200,000 contingent on the fundraising campaign which will determine whether or not the project will move forward. Commissioner Reisch seconded by motion and a roll call vote was taken with Commissioners Overgaard, Reisch and Thompson voting aye and Commissioners Williamson and Burger voting nay; motion was declared carried.

The Administrator presented an update regarding repair to be made to the Terrace and Tunnel structures stating that the Engineer's work is complete and that the project will go to bid this spring. The Administrator also provided updates on the following building projects:

-HVAC at Human Services Building - the timeline is scheduled for April - July where SWHHS and Extension staff will vacate the building and move the TCI/Tri State building across the street; RNCC will assist with moving. A lease agreement with the City of Luverne is forthcoming.
-Chiller at the Courthouse and Library - scheduled for September

The County Board was in receipt price quote from Johnson Controls Inc totaling 17,067.00 for repairs and replacement of boiler at the Library building; motion by Reisch, seconded by Thompson to approve, declared carried on a voice vote.

The County Board discussed the appointment of a representative to the Regional Trails Group; it was determined that Commissioner Thompson would fill that role.

The Administrator presented a 3-year service contract from David Drowns Associates to provide ongoing maintenance for classification and compensation systems at Rock County. The ongoing maintenance efforts will ensure that Rock County stays relatively current with the market and compensation. The annual cost of the contract is \$11,475. Motion by Reisch, seconded by Overgaard to approve, declared carried on a voice vote.

Motion by Burger, seconded by Williamson, to approve the Southwest Adult Mental Health Consortium Fiscal Host Master Agreement, declared carried on a voice vote. The Southwest Adult Mental Health Consortium is an 18-county joint powers agreement with Des Moines Valley serving as the fiscal host. The Administrator discussed legislative issues and the impact:

-Family Paid Leave - a .7% payroll tax, is expected to pass; impact will be if the tax is paid by the employer or split between the employer and employee
-Juneteenth/June 13 Holiday - passed and is a state and federal holiday
-County Program Aid (CPA) - adjustments are proposed to the funding

formula which may result in additional funds

-Cannabis - still being addressed
Commissioner Williamson stated that he attended the following meetings/events: Rock Nobles Cattlemen's Banquet, Beaver Creek Township. Commissioner Reisch stated that he attended the following meetings/events: Rock Nobles Cattlemen's Banquet, Liaison, Southwest Minnesota Opportunity Council. Commissioner Overgaard stated that he attended the following meetings/events: Hardwick Economic Development, Solid Waste, Rural Energy, Liaison, Rock Nobles Cattlemen's Banquet. Commissioner Burger stated that he attended the following meetings/events: Rock Nobles Cattlemen's Banquet
Commissioner Thompson stated that she attended the following meetings/events: Plum Creek Library, Southwest Health & Human Services, ACE, Rock Nobles Cattlemen's Banquet.
With no further business to come before the County Board, the meeting was declared adjourned.

(03-09)

H-BC School Board meets Feb. 13

Hills-Beaver Creek Dist. 671

Minutes

Feb. 13, 2023

The Hills-Beaver Creek School Board met for its semi-monthly meeting at 7:01 p.m. in the H-BC Secondary School Board room, 301 N Summit Ave, Hills, MN. Board members and Administration present were Bosch, Gehrke, Harnack, Helgeson, Rauk, Rozeboom and Uittenbogaard. Superintendent Holthaus, Principal Kellenberger, and Business Manager Rozeboom were also in attendance. Motion by Rozeboom, second by Harnack, and carried to approve the agenda.

No Visitors.

PATRIOT PRIDE:

-9th Grade Boys Basketball Red Rock Conference Tournament Champions!
-School Board Recognition Month
-Mock Trial Final Competition 2/10
-Riley Tatge MVP of the Dakota Classic Basketball Tournament
-8th Grade Girls Basketball Red Rock Conference Tournament Champions!

Committee Reports/Updates:

-Staff Development/TAB- 2/1
-Community Education Meeting 2/7
-Personnel/Finance Meeting - after board meeting 2/13
-MSHSL Meeting 2/15
Motion by Bosch, second by Harnack, and carried to approve Consent Agenda:

-Minutes—1/23/2023 and 2/6/2023

-Bills

-Imprest Cash Reports 2/1/2023 and 2/13/2023

-Assign Arielle Larson as Part Time Secondary Paraprofessional.

Motion by Rozeboom, second by Uittenbogaard, and carried to approve Resolution Establishing an Absentee Ballot Board for Special Election on April 11, 2023.

Motion by Rauk, second by Harnack, and carried to approve offering the Drug Abuse Resistance Education to 5th graders for the remainder of the school year.

Motion by Bosch, second by Helgeson, and carried to approve Donation Resolution: -\$4,714 from Luverne Area Community Foundation for Elementary School Classroom Libraries

-\$20 from Blackbaud Giving Fund for Elementary Student Council

-\$20 from Blackbaud Giving Fund for Secondary Student Council

DISTRICT NON-ACTION ITEMS:

•Secondary Principal Report

•Superintendent/Elementary Principal Report

•Legislative Update - Rozeboom

AGENDA ITEMS FOR THE NEXT REGULARLY SCHEDULED MEETING

DATES TO REMEMBER:

Regular Board Meeting, Monday, February 27

Regular Board Meeting, Monday, March 13

ENTER CLOSED SESSION

Motion by Rozeboom, second by Harnack, and carried to approve entering closed session for the purposes of developing or considering offers or counteroffers for the purchase or sale of real property, pursuant to Minnesota Statutes Section 13D.05, subdivision 3(c)(3). The real property is described as:

The East half (E 1/2) of the Southwest quarter (SW 1/4) of the Northeast quarter NE 1/4 of Sec. 28, TWP 102 Range 46 West of the 5th P.M.; [contains approximately 20 acres]

All of Block Twenty (20) and the following lots in Block Twenty-nine (29): all of Lots 1,2,3,4,5,6,7, the South 40.5 feet of Lot 8, all of Lots 12, 13, 14, First Addition, City of Beaver Creek, Minnesota, [contains approximately 5.68 acres]

Blocks ten (10) and (19), Original Plat, City of Beaver Creek, Minnesota [contains approximately 4.96 acres]

City of Beaver Creek First Addition Lots 5 Thru 12 Block 23 & All of Blocks 24, 25 & 26

City of Beaver Creek Crawford's Addition Blocks 3-4-5- & 6

City of Beaver Creek Outlot 6-7-8-9-10-11-12-13-14

RECONVENE FROM CLOSED SESSION

Motion by Bosch, second by Rozeboom, and carried to approve adjournment of meeting.

Time of Adjournment: 8:07 p.m.

Tamara Rauk, Clerk
(03-09)

City of Luverne Board of Appeals and Adjustments sets public hearing for March 20

Notice of Public Hearig for a Variance

to the City of Luverne Zoning Ordinance

NOTICITE IS HEREBY GIVEN, by the City of Luverne Board of Appeals and Adjustments that a public hearing will be held in the Council Chambers located in the City Offices Building, 305 East Luverne Street, Luverne, Minnesota, commencing at 5:00 p.m. on Monday, March 20, 2023. The purpose of the hearing is to make a ruling on a requested variance by Vance and Rebecca Walgrave, to City Code Section 153.151 for allowable free-standing sign area, 924 South Kniss (20-0610-000) City of Luverne, Minnesota.

All persons wishing to be heard in favor of or in opposition to the variance request should be present at the hearing or present written comments prior thereto to the Building/ Zoning Official. Anyone needing reasonable accommodations or an interpreter should contact the City Clerk's Office, 305 East Luverne Street, Luverne, MN. (507) 449-9898.

By order of the City of Luverne Board of Appeals and Adjustments, Luverne, Minnesota, this 9th day of March, 2023.

Jessica Mead
City Clerk
(03-09)

Read the Public Notices online

www.star-herald.com

LHS boys/cont from page 8

ing Cardinals out-rebounded the LHS Cardinals 35-27.

"The game was close all the way through. Redwood made a run in the second half to get up 10, but our kids fought hard to get it right back to a two-point game," head coach Sichelmeier said.

"We had some really good shots to get the lead but just couldn't get over the hump at the end."

Redwood shot 63 percent inside the paint and scored 19 points on turnovers.

Luverne players struggled to get inside shots to fall, and they made only six of 17 beyond the three-point line.

Junior Gavin DeBeer led Luverne with 19 points. He also had three rebounds, four assists and one steal.

Senior Gannon Ahrendt posted 15 points, nine rebounds, two assists

and two steals in his final game for Luverne.

Sophomore Carter Sehr made 12 points, had five rebounds and one steal.

Senior Marcus Feit added six points, two rebounds and three steals for Luverne.

Senior Riley Sneller contributed five points.

Senior Tyson Cowell made five points and had three rebounds, two assists, two steals and one blocked shot.

"I was really proud of how this team developed throughout the year," Sichelmeier said.

"The seniors provided great leadership all year and they were great role models for our younger players."

Luverne finished its 2022-23 regular season with a record of 13-11 and a Big South West Conference record of 5-6.

H-BC boys/cont from page 8

executed to finish out the season," Wiertzema said.

"We played well enough to win defensively but fell into too many scoring droughts which included too many turnovers."

Freshman Jamin Metzger led the Patriots with 13 points. He also grabbed five rebounds and had one steal.

Senior Brock Harnack finished his last game as a Patriot with eight points, one assist, one steal and one blocked shot.

Sophomore Beau Bakken added four points, eight rebounds, one assist, one steal and two blocked shots.

Sophomore Sawyer Bosch netted four points, had six rebounds, one assist and one steal.

Freshman Micah Bush had four points, four rebounds, two assists and one steal.

Junior Riley Tatge contributed three points, four rebounds and one blocked shot.

Senior Brayden Metzger had two points, one rebound and three assists in his final game for H-BC.

Sophomore Cameron Allen made one free throw, grabbed four rebounds, had two assists and one blocked shot.

Senior Josh Wiersema came off the bench to help H-BC with one rebound in his final game with the Patriots.

Senior Eli Taubert, sophomore Jackson Gacke and freshman EJ Wegener joined the game in the final minutes to be a part of Hills-Beaver Creek's final 2023 playoff competition.

girls' basketball/cont from page 9

mont turnovers in the game, netting 23 points.

As a team the Cardinals had 16 steals, 37 rebounds, three blocked shots and 17 team assists.

Christina Wagner led Luverne with 17 points. She also had four rebounds, three assists and two steals.

"Christina really had a great game," Newgard said. "You could definitely tell things didn't run as smoothly when she was out with a little bit of foul trouble."

John posted nine points inside, five rebounds, three assists, two steals and two blocked shots.

Elizabeth Wagner added eight points, three rebounds, one assist and four blocked shots in the game. She was also on the floor at least three times fighting for the ball.

Hansen came off the bench to sink two 3-point shots for six points and grab two rebounds and blocked one shot.

Sandbulte contributed four points.

Beyer and Serie both added three points each.

Beyer posted two rebounds, two assists and five big steals for Luverne.

Serie helped with two rebounds and one assist.

Sehr and Jocelyn Hart added two points each.

Sehr contributed two rebounds, six assists and one steal.

Hart grabbed four rebounds and one steal.

"I'm really proud of this team and their businesslike approach to the game," Newgard said.

"They have had some major goals since they were young, and winning this game was one of them."

Luverne's win at SMSU was special to Cardinals twin sisters Christina and Elizabeth Wagner, who have committed to play for the SMSU Mustangs girls' basketball team next year.

Star Herald CLASSIFIEDS

EMPLOYMENT	EMPLOYMENT	EMPLOYMENT	EMPLOYMENT	MISCELLANEOUS	WANTED
------------	------------	------------	------------	---------------	--------

CITY OF ADRIAN

Public Works Employee

The City of Adrian is accepting applications until 4:00 p.m. on Monday March 27th, 2023 for a full-time Public Works Employee. High School Diploma or GED required, valid MN Driver's License required, CDL License or ability to obtain. Class D Wastewater license and/or Class C Water license preferred or ability to obtain necessary license(s). Applications and vacancy announcement available at Adrian City Hall, 209 Maine Ave, Suite 106 Adrian, MN 56110 and on our website at www.adrian.govoffice2.com

EOE



HELP WANTED

FULL AND PART-TIME POSITIONS
ON-THE-JOB TRAINING • COMPETITIVE PAY
FUN ATMOSPHERE!

SEND AN APPLICATION TO:
james.montag@icloud.com or call 712-470-0493

HAVE A UNIQUE SERVICE OR BUSINESS? Get the word out to over 1.4 million households. Call WIDE AREA CLASSIFIEDS today, 507-359-7326. (tc)

WANTED

In search of a prom date. Ideal candidate is 5'10", blonde hair, blue eyes, great smile, kind-hearted, funny and a music lyric guru (bonus points if she likes golf!). Non-negotiable - legal name is **Lauren Hansen**. Please contact **Henry Hartquist** (3.9-3.11)

CITY CLERK / TREASURER

The **City of Jasper** is seeking applications for a full-time **City Clerk / Treasurer** position. The position performs a wide range of municipal administrative and financial work. This is a full-time position (35+ hours per week). Benefits and salary will be based on experience and qualifications. Application review will begin immediately. Application deadline is March 17, 2023. A complete job description and applications are available at the Jasper City Office, 105 Wall Street East, or call (507) 348-3701.

THE CITY OF JASPER IS AN EQUAL OPPORTUNITY EMPLOYER.

Help Wanted

Business Office Manager

The applicant should have accounting training and/or experience. Duties include: Payroll, payables and private party billing. We have a 3rd party that does our Medicare/Medicaid billing. Human Resources experience is beneficial. This is a 32 hour per week position. Benefits include: Blue Cross / Blue Shield health insurance and Minnesota PERA retirement.

Please email: admin@parkviewmanormn.com
Or send resume to: Administrator
308 Sherman Ave W, Ellsworth, MN 56129

EMPLOYMENT

TITAN MACHINERY

Precision Farming Specialist

401(k) with company matching on your FIRST DAY of employment

Titan Machinery needs to add a Precision Technology Expert to our team in Luverne, MN!

As an Precision Farming Specialist, you will be a valued member of Team Titan by:

- **Taking Care of Our Customers:** Build strong business relationships with current and future customers through displaying a high level of initiative, integrity, and by meeting your commitments
- **Being an Expert:** Maintain up-to-date product knowledge and precision expertise by continual training and learning. Know your customers, your products, and the precision processes
- **Showing Commitment to Excellence:** Complete accurate, detailed and timely documentation related to the precision sales and support process
- **Being Safe:** Show a focus on always keeping yourself and your team members safe

This position is a great fit for your career if you:

- Have 1+ years of related experience or related education/training
- Love a fast-paced role with a flexible schedule, and have a "work hard, play hard" attitude
- Can use a computer as needed to complete your work
- Enjoy building deep and lasting relationships with customers and employees
- Love to learn and stay up-to-date on product training

Benefits include, but are not limited to:

- HSA (Health Savings Account)-\$1500 tax-free each year, paid to your account by Titan Machinery
- Competitive Wages
- Health, Vision, and Dental Benefits

Apply online at www.titanmachinery.com/careers or direct inquiries to: **Titan Machinery, HR** 644 East Beaton Drive West Fargo, ND 58078-2648 701-356-0130 EEO/AA: Women, minorities and the disabled are encouraged to apply.



EMPLOYMENT

Nobles County Community Services has an opening for a Public Health Nurse or Registered Nurse.

If you have a passion for public health and serving the community this could be the career for you! Join our public health service unit and you'll be part of a skilled, caring, and knowledgeable professional team whose talents and contributions promote, strengthen and protect the health of individuals, families, and communities in Nobles County. This position will provide comprehensive direct care needs assessments, education, and planning to assist individuals in maintaining their independence in their home community. Excellent Benefit Package. Weekends and Holidays off! **APPLY TO:** Nobles County Administration Office. Visit our website at www.co.nobles.mn.us for application and to view full job description and benefit sheet. **Deadline: Open until filled.** EEO/AA Employer (3.2-3.18)

Now Hiring! Sign on bonus of \$1,200 1st shift available, 7 a.m. - 7 p.m.; 3-day/4-day schedule \$17.62 per hour. Willing to train the right candidate, experienced preferred. **APPLY today!** Send all resumes to kalcala@glanbia.com or visit our page at www.Glanbia.com (3.4-3.23)

CREATE YOUR CAREER WITH US

What's Brewing in Luverne, MN?

HIRING EVENT

Tuesday, March 14
4:00 p.m.-8:00 p.m.
Take 16 Brewery
509 E. Main Street, Luverne, MN 56156

We have openings for Patient Access Representatives, Pharmacy Techs, Environmental Services Aides, Food Service Assistants, CNAs, and nurses. We offer competitive pay, comprehensive benefits, opportunities for growth and flexible scheduling to fit your life.

For information on all open positions, visit sanfordcareers.com and search "Luverne, MN".

Equal Employment Opportunity/ Affirmative Action • 1-877-673-0854




CITY OF LUVERNE

WATER/WASTEWATER OPERATOR

Entry level position to become an operator skilled in the technical work needed to operate, maintain and repair process, control and support systems at the City of Luverne newly remodeled Class A Wastewater Treatment Facility and Class C Water Treatment Facility. Full-time, union position, excellent benefits package, starting salary range of \$18.25-\$22.71/hour (DOQ).

Min. Req.: high school diploma or equivalent, 35-mile response area requirement must be met within 6 months of hire, MN Class B CDL or able to obtain one within 12 months of hire, have certification, or work progressively towards certification within 24 months as a Wastewater Treatment Facility Operator at a Class "D" level by the MPCA, have certification, or work progressively towards certification within 24 months as a Water Supply System Operator at a Class "D" level by the MN Department of Health.

Visit www.cityofluverne.org/employment for further details and information on how to apply.

Applications must be received by 4:00 p.m. on Thursday, March 23, 2023



The City of Luverne is an Affirmative Action/Equal Employment Opportunity Employer.

mcAN Minnesota Classified Advertising Network

LOCAL. DIGITAL. ADVERTISING.

170,000 monthly impressions!

Advertise YOUR business on 55" digital screens in 12 locations!

For more information contact: **Rick Peterson** 507-290-0924 bluemounddigital@gmail.com

Wyatt VanSteenberg 507-220-1994 wyatt.bluemounddigital@gmail.com

507-283-2333 (Star Herald)



<p>WANTED TO BUY</p> <p>WANTED: ALL 1970S MOTORCYCLES Running or not. Titled or not. Cash in exchange. Sell now while prices are high! Call Dan at 612/720-2142</p> <p>BUYING AND SELLING silver bars, silver dollars, rare coins, gold coins, gold jewelry, any gold-silver items, collector coins. Kuehl's Coins, Fairmont, Minnesota 507/235-3886</p>	<p>MISCELLANEOUS FREE</p> <p>HIGH-SPEED INTERNET for those that qualify. Government program for recipients of select programs include Medicaid, SNAP, Housing Assistance, WIC, Veterans Pension, Survivor Benefits, Lifeline, Tribal. 15 GB internet service. Bonus offer: Android tablet FREE with one-time \$20 copay. Free shipping & handling. Call Maxisip Telecom today! 866/433-5324</p>	<p>MISCELLANEOUS</p> <p>DONATE YOUR CAR truck or boat to Heritage For The Blind. Free 3-day vacation, tax deductible, free towing, all paperwork taken care of 844/220-9501</p> <p>DISH NETWORK: Only from Dish, 3-year TV price guarantee! 99% signal reliability, backed by guarantee. Includes Multi-Sport with NFL Redzone. Switch and get a FREE \$100 gift card. Call today! 855/562-4309</p> <p>THE GENERAC PWRCELL a solar plus battery storage system. Save money, reduce your reliance on the grid, prepare for power outages and power your home. Full installation services available. \$0 Down financing option. Request a free, no obligation quote today. Call 888/913-5895</p>
<p>Classified Advertising that is Easy!</p> <p>THE MINNESOTA CLASSIFIED AD NETWORK Make an impact with your advertising dollar with classified advertising that reaches over 2.5 million readers!</p> <p>CONTACT YOUR newspaper representative for more information. ccn provides complete details. The 24 Network is a program of the MNA, phone 888-878-2979</p>	<p>CARING FOR AN AGING LOVED ONE? Wondering about options like senior-living communities and in-home care? Caring.com's Family Advisors are here to help take the guesswork out of senior care for you and your family. Call for your free, no-obligation consultation: 866/924-8422</p>	

Outdoors/continued from page 8

front porch when one, then three, then five wolves appeared and killed both dogs within 15 feet of the front door. It was hard to watch, and I can only imagine waking up with nothing but a few bones left of what was your hunting dogs the day before.

Minnesota just floated a bill in this year's legislative session that would prohibit the hunting or trapping of wolves even if they are again delisted ... even if their populations were twice the number they are today. What a short-sighted action this is!

Name one creature in the continent of North America that is not managed to sustain and protect it but at the same time keeping their numbers in a range that meets the needs and desires of that state's citizens. Those clamoring for more wolves don't probably have to deal with the loss of their pets or livestock.

There is no doubt that wolves in Minnesota are iconic animals. There is also no doubt that the deer hunting heritage in our great state sup-

ports lots of jobs and industries. Many reports from hunters show lots of wolf sightings and few to no deer sightings at all. There has to be a balance and all methods of achieving that balance need to be on the table for wildlife agencies to use if and when they need to.

Visiting wolf territory in Minnesota is a beautiful place. Just make sure that your dogs are on a leash and your livestock is protected.

I certainly hope we can find the balance between "the only good wolf is a dead one" and those who think wolves should be left to do what nature intended them to do with no population management whatsoever.

I think trying to find the perfect wolf population is going to be harder than getting a camel through the eye of a needle.

Scott Rall, Worthington, is a habitat conservationist, avid hunting and fishing enthusiast and is president of Nobles County Pheasants Forever. He can be reached at scottarall@gmail.com.



Fighting a losing battle

Lori Sorenson photo/0309 highway 75 patching

Minnesota Department of Transportation crews attempt to fill potholes on North Highway 75 near the Dodge Street crossing Friday, March 3, in Luverne. Despite a fresh layer of asphalt last year, recent frost heaves and heavy traffic have again crumbled the highway surface in town. According to the state's 10-year highway improvement plan, Highway 75 will be resurfaced in 2025 between Main Street and Veterans Drive with improved pedestrian crossings. The estimated investment in the 1.2-mile stretch is \$4.1 million.

Agricultural producers have until March 15 to enroll in USDA's key commodity safety net programs

Agricultural producers who have not yet enrolled in the Agriculture Risk Coverage (ARC) or Price Loss Coverage (PLC) programs for the 2023 crop year have until March 15, 2023, to elect and enroll in a contract.

The U.S. Department of Agriculture (USDA) offers these two safety net programs to provide vital income support to farmers experiencing substantial

declines in crop prices or revenues.

Producers can elect coverage and enroll in ARC-County or PLC, which are both commodity-by-commodity, or ARC-Individual, which covers the entire farm.

Although election changes for 2023 are optional, producers must enroll through a signed contract each year.

Additionally, if a

producer has a multi-year contract on their farm and makes an election change for 2023, they will need to sign a new contract.

If producers do not submit an election by the March 15 deadline, the election remains the same as the 2022 election for commodities on the farm.

Farm owners cannot enroll in either program unless they have a share interest in the commodity. In

Minnesota, producers have completed 81,878 contracts to date, representing 78.63 percent of the more than 104,135 expected contracts.

Producers who do not complete enrollment by the deadline will not be enrolled in ARC or PLC for the 2023 year and will not receive a payment if triggered.

The Rock County Farm Service Agency can be reached at 507-283-2369.

Luverne gears up for Big South speech contest

By Mavis Fodness

Luverne High School speech team will take a sixth-place team finish into next week's Big South Tournament on Thursday, March 16.

They will follow that with an invitational appearance at Russell-Tyler-Ruthon on March 18.

The team competed at Montevideo on March 4. Results were as follows:

- Original oratory: Roselynn Hartshorn, fourth; William Johnson, ribbon.
- Creative expression: Brianna Kinsinger, sixth.
- Great speeches: Nora Louwagie, fifth.
- Extemporaneous speaking: Parker Carbonneau, second; Zander Carbonneau, third.
- Informative speeches: Jessika Tunnissen, second.
- Discussion: Cassi Chesley, second.

MINNESOTA DEPARTMENT OF VETERANS AFFAIRS



Meaningful Careers Start Here

Apply at mn.gov/careers

Search for Job ID# 63110

Certified Nursing Assistants (CNAs), Evening Shift

- \$2,500 sign-on bonus for CNAs (conditions apply).
- Applicant reimbursement for eligible training expenses.
- Competitive pay for all roles.
- Low cost, medical and dental insurance.
- Paid holidays, generous vacation, sick and parental leave, and State of Minnesota retirement plan.
- Recognized as a Best Nursing Home 2023 by US News and World Report.

Questions?
Contact Human Resources at:
mdva.luverne@state.mn.us or 507-920-0000

Serving those who have served.

Give Where You Live
today, tomorrow & beyond

 **LUVERNE AREA COMMUNITY FOUNDATION**

GRANT APPLICATIONS DUE MARCH 31, 2023

Who can apply?
Not-for-profit organizations (either singly or as a consortium), government agencies, academic and research institutions located within Rock County are among the organizations eligible to request support from the Luverne Area Community Foundation.

The Luverne Area Community Foundation invites applications that will enhance the quality of life in the following areas:

- Arts & Humanities
- Community & Civic Affairs
- Social & Economic Growth
- Nutrition
- Environment
- Recreation
- Education
- Support Programs - children to senior citizen
- Community Health & Wellness including physical & mental health

How to apply?

APPLY ONLINE AT:
<http://www.luvacf.org/application-information.html>
or contact Emily Crabtree at
507-220-2424 or emily@luvacf.org

 **LUVERNE AREA COMMUNITY FOUNDATION**
P.O. Box 623 | 102 E. Main | Luverne, MN | 507-220-2424
Office Hours: T-TH 9:00-12:00 & 1:00-4:00
www.luvacf.org

GET THE STAR HERALD SUBSCRIPTION THAT fits your lifestyle!

Get the Star Herald Online

12 months	\$46
24 Hour Access	99¢
Print Edition Only	
In County: 12 months	\$79
In County: 6 months	\$59
Out of County*: 12 months	\$96
Out of County*: 6 months	\$73
Online + Print Edition	
In County: 12 months	\$96
Out of County*: 12 months	\$120

*Mailed as periodicals. Allow up to 2 weeks out of state.

Call 507-283-2333



Rock County
STAR HERALD



CARDINAL GIRLS' HOCKEY

2023 STATE TOURNAMENT QUALIFIERS

A PRODUCTION OF THE STAR HERALD & FEATURED ADVERTISERS

March 9, 2023

Roll Cards, roll!

Luverne High School girls' hockey team rolls through section championship on their way to fourth-in-row state hockey tournament competition in St. Paul



Team members celebrate their section win. Pictured are (front, from left) manager Hadley Vanderburg, Kassidy Saarloos, Izzy Steensma, Tenley Behr, Kamryn Van Batavia, Mallory Von Tersch, Mallory Nelson, Anika Boll, Ellie Van Batavia, Macie Edstrom, Emma Saarloos, (second row) Greta McClure, Ella Apel, Payton Behr, Paula Martinez, Hannah Woodley, Zariah Holmgren, Rylee Kurtz, Marlee Nelson, manager Kenedee Franken, (back row) assistant coach Ellen Wenninger, assistant coach Skyler Wenninger, coach Tony Sandbulte and assistant coach Matt McClure. Greg Hoogeveen photo.

Journey to state paved with firm belief in 'team first, work hard and have fun'

By Star Herald staff

The Luverne girls' hockey team wrapped up its 2022-23 season with a fourth-year-in-row trip to the Minnesota State High School League Girls' Hockey State Tournament at Xcel Energy Center in Saint Paul Feb. 22-25.

Head coach Tony Sandbulte reflected on the

season last week.

"Our team beliefs are team first, work hard, and have fun," he said. "When we are doing that, we are a strong team."

He said his players did just that throughout the 2022-23 hockey season.

The Cardinal girls punched their ticket to state after shutting out

New Ulm 4-0 in the Section 3A championship to advance.

The sixth-seeded Cardinals faced third-seeded Orono in the opening round of play, losing 6-0 to the eventual second-place state champs.

The LHS girls bowed out of the state tournament and their 2023 season on

Feb. 23 when they dropped a 5-3 game to Mankato East in the consolation round.

The Cardinal girls finished the season with a remarkable 23-8 record and perfect 14-0 Big South Conference record.

Coach Sandbulte has long held that his team built a successful momen-

tum one game at a time, overcoming challenges that began years ago.

"I love the process of seeing a team grow and work together," he said last week.

"This was a group of young and old that sold out for a common goal."

Journey to state/see p. 3

**HOW DO YOU GET TO
STATE HOCKEY?
DESIRE. DEDICATION.
DETERMINATION. DISCIPLINE.
AND, 50 YEARS AGO, TITLE IX.
*You make us proud!***



Photo by Jim Juhl/Myhre Studio

LHS team members include (front, from left) Emma Saarloos, Ella Apel, Izzy Steensma, Payton Behr, Kamryn Van Batavia, Mallory Nelson, Tenley Behr, Anika Boll, Marlee Nelson, Mallory Von Tersch, (back row) coach Tony Sandbulte, manager Kenedee Franken, Rylee Kurtz, Paula Martinez, Ellie Van Batavia, Hannah Woodley, Zariah Holmgren, Greta McClure, Kassidy Saarloos, Macie Edstrom, assistant coach Matt McClure and assistant coach Ellen Wenninger.

**Congratulations Luverne Cardinals
on an outstanding season!**



PEPSI BOTTLING CO. 1801 FORMAN DR., PIPESTONE, MN 56164



The LHS girls' hockey team chartered bus is escorted through town by the Luverne Fire Department with fans in tow. (Greg Hoogeveen photo)

Journey to state paved with beliefs in 'team first, work hard and have fun'/from page 1

'Success builds success'

The Cardinals first made it to the state tournament seven years ago.

"I've chatted with some girls from our first team making the tournament in 2016," Sandbulte said after the 2022 season.

"And I told them, 'See what you started?' Success builds success."

He said that success starts and ends with the team.

"We always focus on having a team-first mentality. When everyone is working for the greater good of the team, good things tend to happen."

And that, he said, takes

focus and hard work between competitions.

"We always want to be at our best at the right time," Sandbulte said

"When the girls enjoy coming to practice and have fun playing hockey, it usually shows in the final outcome."

Section 3A semifinals

The Luverne girls' hockey team finished its regular season with a 19-6 record after beating Fairmont 7-0 at home Tuesday, Feb. 7.

The Cardinals competed in their first round of post-season play Feb. 11 when

Journey to state/see p. 4



The Cardinal girls board a chartered bus Feb. 21 headed for state playoffs in St. Paul.

Greg Hoogeveen photo

STOP IN AND SEE US IN OUR GRAB & GO STOREFRONT

602 East Main
Luverne, MN
507.449.7608
bluestemcatering@outlook.com
www.bluestemcateringco.com

MANLEY
TIRE & OIL SERVICE, INC.

www.manleytire.com
1-800-615-3704

Luverne ACE

So much more than just a Hardware store

210 East Lincoln • Luverne • 507-283-4161

DEN HERDER CONSTRUCTION, INC.

P.O. Box 522 • Luverne, MN 56156-0522
Cal Den Herder 507-920-8917
Colby Den Herder 507-220-2239



Athletic director Todd Oye introduces the girls' hockey team Monday, Feb. 20, during a student body pep rally in the Performing Arts Center to send the team off to state competition at the Xcel Energy Center in St. Paul. Pictured are (front row) Payton Behr, Zariah Holmgren, Kenedee Franken (manager), Hadley Vanderburg Manager), Anika Boll, Mallory Von Tersch, Mallory Nelson, Kamryn Van Batavia, coach Tony Sandbulte (back) Kassidy Saarloos, Macie Edstrom, Marlee Nelson, Emma Saarloos, Paula Martinez, Ella Apel, Greta McClure, Hannah Woodley, Rylee Kurtz. Not pictured – Tenley Behr, Isabella Steensma and Ellie Van Batavia Greg Hoogeveen photo.

Journey to state paved with beliefs in 'team first, work hard and have fun'/from page 3



LHS girl's hockey players and head coach Tony Sandbulte stand at the end of the rally, thanking everyone attending for their support. Greg Hoogeveen photo

they hosted Windom in the Blue Mound Ice Arena.

The Luverne girls' hockey team came ready to play against Windom, and the excitement was evident on their faces.

Sophomore Payton Behr made the game's first goal at 3:15 in the first period assisted by senior Kamryn Van Batavia and eighth-grader Tenley Behr.

Junior Anika Boll made the Cardinals' second goal at 12:10 assisted by eighth-grader Kassidy Saarloos and freshman Ella Apel, ending the first period ahead by two points.

In the second period Windom scored their only goal at 5:51.

Eighth-grader Izzy Steensma answered the Eagles' goal with two of her own in the second period. She scored her first at 8:20 unassisted and her second at 9:52 assisted by eighth-grader Tenley

Behr and senior Mallory Nelson.

Luverne pulled away 4-1 after the second period and scored four more goals to win the game 8-1.

Kamryn Van Batavia beat the Eagles goalie eight seconds into the period on a power play. Her sister, seventh-grader Ellie Van Batavia, and Apel assisted in the play.

Steensma scored her third (hat trick) goal at 1:27 assisted by Tenley Behr and freshman Greta McClure.

Kamryn Van Batavia got her second score unassisted at 4:21.

McClure finished the scoring at 15:27 in the third period assisted by Ellie Van Batavia and Tenley Behr.

Beating Windom in the Section 3A finals advanced the Cards to the section

Journey to state/see next page

**808 S. Kniss
Luverne, MN
507-283-2381**

Buffalo Ridge
INSURANCE

**New Prairie
Insulation**
Beaver Creek, Minn.
507-673-2548

**507-920-5631
Merlin Cleveringa**
Adam Uithoven 507-227-1770 | Derek Sandbulte 507-227-1065

**Luverne
507-283-2698 Home
Lic. #BC-20552185**

800-844-2341

**Mark's
PLUMBING, HEATING, A/C, LLC**
507-283-9245

TEMPSTAR
Heating and Cooling Products

608 W. HATTING, LUVERNE
MARK & CINDY KURTZ, OWNER
Master Plumber Lic. #066849-PM

**Real Estate
Retrievers**

Allstate Realty Team ~ Rewarding you with Results

LUVERNE, MN 507-283-4216
HILLS, MN 507-962-3433
PIPESTONE, MN 507-562-0450
EDGERTON, MN 507-631-1717

REALESTATERETRIEVERS.COM

championship game against New Ulm on Tuesday, Feb. 14, in St. Peter.

Section 3A Championship Game

Those who braved the elements to attend the Valentine's Day game in St. Peter were not disappointed.

The Luverne girls' hockey team earned a berth into the state playoffs after taking down New Ulm 4-0 to claim the 2023 Section 3A Championship trophy.

This is Luverne's fourth year in a row being crowned the 3A champs, and it was the third time the Cardinals

beat New Ulm this year, after taking down the Eagles 4-1 in their season opener Nov. 15 in New Ulm.

The two teams met again at the Blue Mound Ice Arena in Luverne Jan. 19, when the Cardinals claimed a 4-1 win over the Eagles.

Tuesday's 4-0 win iced the Cardinals' ticket to state.

The first period was a back-and-forth game with both teams not wanting to get caught making a mistake and giving up a goal.

The Cardinals had 10 shots on the Eagles' goalie, but she stood strong and shut Luverne down.



The Luverne girls' hockey team celebrates their 8-1 win over Windom Saturday, Feb. 11, in the Section 3A semifinal game at the Blue Mound Ice Arena. Greg Hoogveen photo



LHS senior goalie Mallory Von Tersch makes a glove save against Windom. Eighth-grader Kassidy Saarloos screens a defender from getting a deflection. Greg Hoogveen photo

New Ulm placed five shots on senior Mallory Von Tersch, but she deflected them with ease.

The first period closed in a scoreless 17 minutes of play.

In the second period Luverne stepped up its puck control and attacks on the New Ulm goalkeeper.

Finally, at 5:30 in the second period, senior Kamryn Van

Batavia scored Luverne's first goal.

She beat the Eagles goalie by drawing her out of the net and sneaking a backside stick shot past her.

Van Batavia was assisted by her little sister, seventh-grader Ella Van Batavia, and sophomore Payton Behr.

Journey to state/next page



MINNWEST BANK[®]

116 East Main Street • Luverne • 507-283-2366
 Hwy. 75 • 800 South Kniss • Luverne • 507-283-9131

www.minnwestbank.com • Member FDIC • MoneyLine 888-616 BANK



102 E. Maple
 Luverne, MN
507-283-9151



LUverne
 Area Chamber & CVB


Luverne, MN 56156 ~ 507-283-4061

Quality Service Since 1927!

McClure Electric

121 N. Cedar, Luverne, MN | 507-283-4716

Alan M. Aanenson, owner




State Farm[™]

Jason Vote, Agent

311 W Gabrielson Rd #3
 Luverne, MN 56156
 507-283-4401



Henning
 CONSTRUCTION INC

ADRIAN - LUVERNE, MINNESOTA
 201 Louisiana Ave | Adrian, MN | 507-483-2486
www.henninginc.com



Cardinal seniors Mallory Nelson, Kamryn Van Batavia and Mallory Von Tersch share a moment with coach Tony Sandbulte after the Windom game at home Saturday, Feb. 11. (Submitted photo) Kamryn Van Batavia, Ella Apel and Tenley Behr celebrate a goal against Windom in their 8-1 win Saturday, Feb. 11. Greg Hoogveen photo

Journey to state paved with beliefs in 'team first, work hard and have fun'/from page 5

From that point, it felt like a weight was lifted and the Cardinals were free to have fun and play their game.

Payton Behr scored Luverne's second goal at 10:14, driving directly at the Eagles goalie and beating her below the pads to the back of the net.

Behr was assisted by Kamryn Van Batavia and eighth-grader Kassidy Saarloos.

The second period ended with Luverne in command with a 2-0 lead.

Second period shots on goal favored Luverne 9-4.

In the third period the Cardinals kept up their

pressure play and controlled the puck.

At 10:09 in the third period Kamryn Van Batavia had a breakaway shot bounce off the Eagles goalie.

Eighth-grader Izzy Steensma was able to follow the deflection to the side of the net and poke it in

behind the goalie, scoring Luverne's third goal.

Kamryn Van Batavia scored her second goal at 11:24 in the third period with a goalie-beating breakaway wrist shot.

She was assisted by her sister, seventh-grader Ellie Van Batavia, and fellow senior Mallory

Nelson. The game ended with Luverne winning 4-0 against New Ulm.

LHS senior goalie Mallory Von Tersch faced 15 shots in the game and deflected all of them to get her ninth shutout for the season.

Journey to state/next page

HARTQUIST
FUNERAL & CREMATION SERVICES
Celebrating Life
Pipestone Luverne Lake Benton Jasper Tyler
www.HartquistFuneral.com

KLOSTERBUER & HAUBRICH, LLP
DONALD R. KLOSTERBUER
JEFFREY L. HAUBRICH
DAVID A. OWENS
120 N MCKENZIE, LUVERNE, MN
507-283-9111

CHS

Dr. Tanner Brolsma
LUVERNE
Family Dental
115 East Main Street
Luverne, MN 56156
(507) 283-9129

H&A
HEIDEBRINK & ASSOCIATES
224 E MAIN ST
LUVERNE, MN 56156
PHONE 507-283-4085
HEIDEBRINKAGENCY.COM
FARM · HOME · BUSINESS · LONG TERM CARE · AUTO · CROP · LIFE · HEALTH

Luverne
BODY SHOP
AUTO GLASS
KEVIN AAKER
kevin@luvernebodyshop.com
ANDREW HEMME
andrew@luvernebodyshop.com
920 Commerce Rd.
Luverne, MN 56156
507.283.8711

Below, seniors Mallory Nelson, Kamryn Van Batavia and Mallory Von Tersch accept the Section 3A Championship plaque from LHS athletic director Todd Oye Tuesday, Feb. 14.

Greg Hoogeveen photo



The Cardinal girls take a moment to pose for parents after returning to the Blue Mound Ice Arena following their section victory in St. Peter on Feb. 14. Pictured are (front, from left) Kenedee Franken, Mallory Von Tersch, Ellie Van Batavia, Macie Edstrom, Izzy Steensma, Marlee Nelson, (back) Greta McClure, Hannah Woodley, Zariah Holmgren, Payton Behr, Kamryn Van Batavia, Mallory Nelson, Rylee Kurtz, Anika Boll, Tenley Behr, Kassidy Saarloos, Emma Saarloos and Paula Martinez. (Submitted photo)

Journey to state/continued from page 6

State playoffs

The Cardinals' first game at state was Feb. 22, at the Xcel Energy Center.

They traveled to St. Paul a day early to beat a heavily forecast blizzard that indeed closed roads and much of the state from Feb. 21 to 23.

With most other events canceled across the state, the Minnesota Girls' State Hockey Tournament continued

as scheduled with the teams and players secured in place ahead of time.

It meant that the Cardinals' cheering section was meager, but the team showed up ready to play.

The sixth-seeded Luverne team faced eventual second-place champion Orono, the third seed, in opening round play.

Journey to state/continued on next page



HOWLING DOG SALOON
507-449-0454
NOW HIRING!



Viking Electric LLC
Tim Gangestad
Owner
(507) 290-2595
vikingelectricmn@gmail.com
Conquering all of your electrical needs!
Residential • Commercial • Agricultural




JOHN DEERE | **C&B**
C&B – Luverne

Country Cupboards
"Where Fine Craftsmen Produce Work With Pride!"
2 miles south of Luverne on Hwy. 75
Phone 507-283-8176

Kozlowski
Insurance Agency & Financial Services, Inc.
212 S Kniss, Luverne • (507) 283-3704 or (877) 631-3704

Meulebroeck, Taubert & Co., PLLP
Certified Public Accountants
• Tax planning & preparation • Accounting, Payroll & Bookkeeping services
• Agri-plan™ - pretax medical deductions
109 S. Freeman, Luverne, MN
507-283-4055

Journey to state paved with beliefs in 'team first, work hard and have fun'/from page 7



Above, the Luverne High School pep band plays for fans in the opening of the game against Windom.

At right, Cardinal players celebrate their 4-0 win over New Ulm Tuesday, Feb. 14, in St. Peter.

Greg Hoogeveen photos

“Our hockey community invests in our team. And these girls put in the work to produce a product we are very proud of.”

— Coach Tony Sandbulte



Orono 6, LHS 0

“Orono is a very good team,” LHS head coach Tony Sandbulte said.

“Their team depth was very impressive and ultimately the difference in the game.”

The Luverne girls’ hockey team took on the 24-3-4 Orono Spartans in the Class A Quarterfinal hockey game Wednesday, Feb. 22, at the Xcel Energy Center in St. Paul, losing 6-0 to a tough

team.

Luverne entered the game 23-6 with a young team consisting of three seniors, one junior, two sophomores, five freshmen, six eighth-graders and one seventh-grader.

Orono senior goalie Celia Dahl faced only 13 shots from the Cardinals in the game.

Luverne’s attempted goals came from eighth-grader Tenley Behr with three, freshman Ella Apel

Luverne Flowers & Greenhouses
LUVERNE LANDSCAPING, L.L.C
KEVIN AND KATHY JACOBSMA
 Shop: 507-283-4451 811 W. Warren, Luverne, MN

McClure
 PLUMBING, HEATING, AIR CONDITIONING, INC.
 412 S KNISS AVE. LUVERNE, MN 56156
 PHONE 507-449-2828
 FAX 507-449-2829

EISMA AND EISMA
ATTORNEYS AT LAW
 130 East Main St. Luverne MN
 507-283-4828

Dingmann
 Funeral Home • Cremation Service
 www.dingmannandson.com

Luverne 507-283-4567
 Worthington 507-372-4250
 Adrian 507-483-2761

Bill Korth
 Auction Service
 Licensed Auctioneer
 710 N. Oakley
 Luverne, MN 56156
 Home: 507-283-4766
 Cell: 507-227-4958

Nutrien
Ag Solutions™
 612 W Hatting Street, Luverne, MN 56156
 www.nutrienagsolutions.com • 507-449-7679



Above, the Cardinal girls line up ahead of their game with Orono in the opening round of state playoffs in the Xcel Energy Center.

At right, Tenley Behr (3) and goalie Mallory Von Tersch track a blocked shot during the game with Orono. Photo courtesy Jason Wachter, The Rink Live



with one, senior Mallory Nelson with one, sophomore Payton Behr with two, seventh-grader Ellie Van Batavia with one, senior Kamryn Van Batavia with three, eighth-grader Macy Edstrom with one and eighth-grader Rylee Kurtz with one shot.

Luverne's goalie, senior Mallory Von Tersch, defended 39 shots in the game, letting six pucks slip through for goals.

The Spartan win sent them to a Class A Semifinal game against Proctor/Hermantown

Journey to state/next page



D. & G.
Drinking Water Systems

Water made by reverse osmosis process
Rentals • Sales • Service

610 West Hatting
Luverne, MN
507-283-4630 • Darin Smeins
Lic. # WM068242



BANK WITH PEOPLE YOU KNOW AND TRUST.

SECURING YOUR FUTURE

SECURITY SAVINGS BANK bankwithssb.com

Member FDIC

BIG
Oru's
BAR




UPTOWN ADRIAN, MN
507-483-2885



taco john's
SINCE 1969

South Hwy. 75, Luverne
507-283-4562



Wayne's
BODY SHOP

TIM WALGRAVE • JOSH VANDENHOEK • SETH MILLER
310 W. Hatting Street, Luverne MN
Office: 507-449-8315 Fax: 507-449-8326

Ketterling Services, Inc.
401 S. Cedar St. • Luverne, MN • 507-283-2863 • www.ketterlingservicesinc.com
Hours: Tues.-Fri. 8:30 a.m. to Noon & 1 p.m. to 5 p.m.

Roll-Off Service for Building Demo & Remodeling

SANITATION:
Commercial
Residential
Rural



RECYCLING:
Collection
Dropoff

Monthly - Weekly - Daily

Journey to state paved with beliefs in 'team first, work hard and have fun'/from page 7

and Luverne's loss sent the Cardinals to a consolation semifinal game against Mankato East at the TRIA rink Thursday, Feb. 23.

Class A Consolation Semifinal Mankato East 5, LHS 3

In the Cardinals' second hockey game of the tournament, they faced a familiar opponent, Mankato East, Feb. 23, at the TRIA Rink in St. Paul.

Having played the Cougars twice this year already, losing close games 3-4 Dec. 10 and 1-2 Dec. 28, Luverne was aware of changes they may need to make to win.

Unfortunately, plans and execution do not always come together.

Luverne lost to Mankato East 5-3 and ended the Cardinals' state hockey experience this year.

"Mankato East had our number this year. I felt we played really well; however, we didn't get the bounce or calls in this one," Sandbulte said.

"They scored a couple of early power-play goals that gave them leverage the rest of the way."

The Cougars started the game strong with Luverne on their heels after building a 3-0 lead in the first period.

In the second period senior Kamryn Van Batavia scored a power play goal for Luverne at 12:15 unassisted.

After two periods Luverne was on the board but still trailed

Mankato East 3-1.

In the third period the Cougars scored at 4:43 to go ahead 4-1.

Not to be outdone, Kamryn Van Batavia scored her second goal at 7:02 on another power play to cut the lead in half, 4-2.

Eighth-grader Isabella Steensma scored at 15:46 in the third period assisted by fellow eighth-

grader Macie Edstrom, bringing Luverne one goal closer to tying the game at 4-3.

At 16:38 in the third period, on a power play, Mankato East slipped in one more goal to ice the contest and dash any hopes the Cardinals had of going into overtime.

"Overall, I'm very proud of our

hockey team and the season they had," Sandbulte said. "It was another fun and memorable season."

The Cougars had 14 total shots on goal in the game.

Senior Mallory Von Tersch had three get past her in the first period, two on power plays.

After that Von Tersch hunkered down and was able to stop



Eighth-graders Cassidy Saarloos (6), Macie Edstrom (16), Tenley Behr (3) and Isabella Steensma (4) help defend senior goalie Mallory Von Tersch and Luverne's goal against Orono Wednesday, Feb. 22, at the Xcel Energy Center. The Luverne Cardinals lost the game 6-0. Photo courtesy Jason Wachter, The Rink Live photo



**Congratulations to the
Luverne High School
girls' hockey team!**

!! ROLL CARDS ROLL !!

**Dave & Jessica
Van Batavia & Family**



Congratulations!
STUDENT ATHLETES

TITAN MACHINERY
410 W Koehn Ave · Luverne, MN · 507.283.2319
www.titanmachinery.com




North Highway 75, Luverne (507) 283-4889



**GrandStay Hotel & Suites
of Luverne**
908 S. Kniss Ave
Luverne, MN 56156
507-449-4949

HOTEL & SUITES

**Luverne
Rotary Club**



Luverne, MN

ST. CATHERINE'S CHURCH




203 E. Brown St.



Cardinal players huddle up after their 5-3 loss to Mankato East on Feb. 23 in the TRIA Rink in St. Paul.

At right, Cardinal hockey players greet their young fans ahead of the consolation playoff game in St. Paul Feb. 23.



several break-aways by a quick Mankato East team.

Luverne was able to get 41 shots on the Cougar goalie in the game, with only three getting past her pads.

Despite ending the season with the loss, Coach Sandbulte praised his

players for their effort and determination.

"They're a great group and it was a true pleasure coaching them," he said.

"I couldn't be more proud."

He also thanked par-

Journey to state/see p. 13



Southwestern Mental Health

Congratulations Luverne Girls Hockey Team!

Reach Us At:
507-376-4141

Visit Our Website:
swmhc.org

Main Locations:
Luverne & Worthington

CATTNACH
INSURANCE AGENCY

Auto • Farm/Home • Crop/Hail • Commercial Life • Health • Long Term Care • Disability

info@Cattnach.com
www.cattnach.com

South Hwy. 75, Luverne, MN
507-283-8383

Luverne

Optimist Club

Supporter of youth recreation in Rock County.

Luverne
MINNESOTA
Love the life!

City of Luverne

305 East Luverne Street
Luverne, MN 56156
City Office 507-449-2388
Public Works 507-449-5043
Public Utilities 507-449-2388
www.cityofluverne.org

Rock County Abstract & Title, Inc.

LORI DERAGISCH
President
LDRCAT@iw.net

110 N Oakley St
Luverne, MN
Phone 507-283-8460
Fax 507-283-8461

Congratulations Cardinals

on your dedication, hard work and years of practice!



LHS

Team members pictured are (front, from left) manager Hadley Vanderburg, Kassidy Saarloos, Izzy Steensma, Tenley Behr, Kamryn Van Batavia, Mallory Von Tersch, Mallory Nelson, Anika Boll, Ellie Van Batavia, Macie Edstrom, Emma Saarloos, (second row) Greta McClure, Ella Apel, Payton Behr, Paula Martinez, Hannah Woodley, Zariah Holmgren, Rylee Kurtz, Marlee Nelson, manager Kenedee Franken, (back row) assistant coach Ellen Wenninger, assistant coach Skyler Wenninger, coach Tony Sandbulte and assistant coach Matt McClure.

12U

12U team members include (front, from left) Kendyl Behr, Summer Mollberg, Harper Renken, Brynlee Lass, Addisyn Lais, Mollee Pick, coach Makayla Sterrett, (back) coach Adam Nelson, Mallorie Edstrom, Samantha VanMaanen, Ayla Nelson, Kloe Brockberg, Tenlee Pick, Destiny Kubesh, Kloey Crable and coach Amanda VanMaanen.



Thank you to everyone who has supported the **Luverne Hockey Association**

in the beginning, today and in the future.

Thank you also to coaches, parents, kids and the community for your encouragement. Without you, this wouldn't be possible!



Journey to state paved with beliefs in 'team first, work hard and have fun'/from page 11

ents, fans and community members for their support throughout the season.

“Our hockey community invests in our team,” Sandbulte said.

“And these girls put in the work to produce a product we are very proud of.”

Leaders on the ice

A Minnesota State High School League post-season writeup on Feb. 23, featured the young Luverne team.

“When the hockey season started, the team from Luverne faced a minor travel issue,” the story read.

“The Cardinals practice and play at city-owned Blue Mound Ice Arena, which is a mile and a half from the high school. The issue came when the school day ended and the girls needed to get to the rink.”

Traditionally, players who are able to drive transport younger teammates.

This season, only three players were licensed to drive when practice started.

“The whole team would load up in three cars,” Sandbulte told the MSHSL.

“I’m not sure it was always legal but they got there and we had practice.”

Sophomore Payton Behr got her driver’s license in

January, adding a fourth vehicle to the caravan.

“That’s what small town hockey is, that’s what you have to do,” Sandbulte said.

Coch Coach Tony Sandbulte praises senior leaders on the Cardinals team

We’re fortunate to have three senior leaders that have carried this team and

have sold out to our beliefs.

Senior Mallory Von Tersch is our backstop and is willing to do what’s best for the team. Last year she skated out as a defenseman,

and this year she was able to be a leader in the net.

Senior Mallory Nelson, who has the most games started as a Luverne blue liner.

She is playing her best games to date and is not afraid to lead a young core of defensemen.

Senior Kamryn Van Batavia is an outstanding offensive force that has guided our program to four straight state tournament appearances.

Kam’s positive energy and effort flow throughout the entire team.

All three of our seniors have led by example and have taken this team to new heights. I couldn’t be more proud of our seniors and the legacy they’ll leave behind.

Mallory Nelson

Being section champions and going to state for the fourth year in a row is a huge accomplishment. Being able to be the first Luverne girls’ hockey team conference winners is an honor.

My reflections on my hockey career would be to work hard no matter what. Enjoy being able to be with

Journey to state/next page

2022-23 LHS girls’ hockey schedule

Regular Season

Tue Nov 15	W 4-1	@ New Ulm	New Ulm Civic Center
Thu Nov 17	W 8-0	Windom	Blue Mound Ice Arena
Sat Nov 19	W 5-1	@ Minnesota River	Le Sueur Arena
Tue Nov 22	W 8-0	@ Fairmont	Fairmont-Martin County Arena
Tue Nov 29	W 3-0	Marshall	Blue Mound Ice Arena
Sat Dec 3	W 6-0	Waseca	Blue Mound Ice Arena
Tue Dec 6	W 17-1	Austin	Blue Mound Ice Arena
Sat Dec 10	L 3-4	@ Mankato East	Mankato All Seasons Arena
Sat Dec 17	W 3-1	River Lakes	Blue Mound Ice Arena
Mon Dec 26	W 2-0	River Lakes	Schwan's Super Rink 2
Tue Dec 27	L 2-3	Mounds View/Irondale	Schwan's Super Rink 2
Wed Dec 28	L 1-2	@ Mankato East	Schwan's Super Rink 2
Mon Jan 9	W 12-0	@ Worthington	Worthington Hockey Arena
Tue Jan 10	L 2-3	@ Albert Lea	Albert Lea City Arena
Fri Jan 13	W 8-1	@ Breckenridge-Wahpeton	Ellen Stern & Harry Stern Sports Arena
Sat Jan 14	L 0-10	Warroad	Ellen Stern & Harry Stern Sports Arena
Tue Jan 17	W 4-0	Minnesota River	Blue Mound Ice Arena
Thu Jan 19	W 4-1	New Ulm	Blue Mound Ice Arena
Sat Jan 21	W 3-2	@ Dodge County	Dodge County Ice Arena
Tue Jan 24	W 11-0	Worthington	Blue Mound Ice Arena
Thu Jan 26	W 4-2	@ Marshall	Red Baron Arena
Sat Jan 28	L 0-3	Breck	Blue Mound Arena
Thu Feb 2	W 4-2	@ Windom	Windom Arena
Sat Feb 4	W 6-1	@ Waseca	Waseca Community Arena
Tue Feb 7	W 7-0	Fairmont	Blue Mound Ice Arena

Regular season record 21-6.

Big South Conference 14-0

Post season

Sat Feb 11	W 8-1	Windom	Blue Mound Ice Arena - Section 3A Semifinal
Tue Feb 14	W 4-0	New Ulm	Lund Arena - Section 3A Championship
Wed Feb 22	L 0-6	Orono	Xcel Energy Center - Class A Quarterfinal
Thurs Feb 23	L 3-5	Mankato East	TRIA Rink - Class A Consolation Semifinal

Post season record 2-2.




Heartland Mutual
Insurance Company

Specializing in
Farm & Home Insurance

“Serving our Policyholders for over 125 years”

Lismore • 507-472-8216 | Luverne • 507-283-9182



Loosbrock Electrical Construction, LLC

Scott Loosbrock
Owner

Licensed • Bonded • Insured
Residential • Commercial • Industrial • Agriculture

scott@loosbrockelectric.com
www.loosbrockelectric.com

507-360-5418



a place to grow...
a place to excel...
a place to stand out...

Luverne Public Schools

www.isd2184.net



First Farmers & Merchants

TEAMWORK FOR THE WIN!

Congrats to the Luverne Varsity Girls Hockey Team for making it to State!

We believe in you.
Member FDIC. And the community.

303 E Main St | Luverne | 507-283-4463



CWG
Business Insurance.

Period!

Continental Western Group
A BERKLEY COMPANY

Tri-State Region
Ten Roundwind Road
Luverne, Minnesota 56156
(507) 283-9561; (800) 533-0303
www.cwgins.com

FREE in-home water test



Culligan Water
of Southern Minnesota

CULLIGANMN.COM

507-283-9105



Greg Hoogeveen photo

Cardinal leaders on the ice
Individually several Cardinals achieved significant milestones this season



Greg Hoogeveen photo

**Senior No. 14
Kamryn Van Batavia**

- 61 goals for the season (first place in the state),
- 81 points (fifth place in the state),
- 74 shots on goal (sixth place in the state),
- 12 power play goals (fourth in the state), and nine game-winning goals (fourth in the state).
- Named to Big South All-Conference
- Named Ms. Hockey Finalist
- Named to All-State



Greg Hoogeveen photo

**Senior No. 1
Mallory Von Tersch**

- Ended the season with a 20-8 record and 10 total shutouts during regular and post-season play.

The 10 shutouts tied her for sixth place in the state in that category according to the Minnesota Girls' Hockey Hub.

**Senior No. 9
Mallory Nelson**

- Big South All-Conference Honorable Mention

Sophomore Payton Behr

- Led the Cardinals with 32 total assists, putting her at No. 18 in the leader board for the state according to the Minnesota Girls' Hockey Hub.
- Big South All-Conference

Eighth-grader Tenley Behr

- Big South All-Conference Honorable Mention

Cardinal leaders off the ice

Section 3A Coach of the Year - Tony Sandbulte

Section 3A Assistant Coach of the Year - Matt McClure

We're fortunate to have three senior leaders that have carried this team and have sold out to our beliefs.

— Cardinals' head coach Tony Sandbulte

Luverne
Aquatics & Fitness

**Luverne Area
Community Foundation**
102 E. Main St. • P.O. Box 623 • Luverne, MN 5616
www.luvacf.org • (507) 220-2424
Give Where You Live
today, tomorrow & beyond

Quality
PRINTING, INC.
PAPER, SIGNS & PROMOTIONAL ITEMS
401 W Hatting St., Luverne, MN 56156
507-283-1716
qualityprinting-luverne.com

Pizza Ranch
110 E. Main, Luverne 507-283-2379

Journey to state paved with beliefs in 'team first, work hard and have fun'/from page 13

your teammates and enjoy all five years on varsity hockey because they go by fast.

Mallory Von Tersch

The most remarkable thing about our season this year was how well the younger girls adapted to playing with the returning players.

We had seven girls that were new to our team this year, which is a lot when you only have 18 on the team. All of them came onto the team this year ready to play and learn the next level, and all of them succeeded. The growth that they had from the beginning of the year to the end was amazing to us older girls, and it was a key factor of how we got to the state tournament.

I attribute my success to working hard and having fun. Our team likes to have fun on our bus trips, and then play a serious hockey game.

The motivation that you get from a team bond like ours is like no other. You want to play and you want to play well because you know that all of your friends are counting on you and are going to play their best, too.



Seniors Mallory Nelson, Kamryn Van Batavia and Mallory Von Tersch pose with their new Section 3A Champion plaque after beating New Ulm 4-0 Tuesday, Feb. 14, in St. Peter. Greg Hoogeveen photo

My advice to younger players is to enjoy everything with your team. Everyone says it goes by so fast, and while that advice is true — they don't tell you that you will feel like you have been playing in a Luverne varsity jersey your whole life.

Every year on the team is a different year and you will have a different role, so

just trust your coaches and take it all in.

Kamryn Van Batavia

It's been amazing to see how much our team grew from when we started the season compared to where we ended.

The state tournament was not only a great end to my senior year, but also a reward for the hard

work that everyone put in to improve all season. It's like one last hurrah to give our all and make as many memories as we can.

My success is driven by my love for the game as well as my team. I've been playing hockey since I was two, meaning that I've dedicated a lot of time to working hard both during the season and in the off season.

Take a second to look at the crowd, the people who are there to cheer you on at each game — our community. Give back to it when you can, and don't take it for granted.

Kamryn Van Batavia

In that time, I've played with hundreds of girls who all played a roll in challenging me to be a better player.

I also have to give credit to my dad. Hockey is what brought us close and we've spent countless late nights at the rink working on the things that need improvement.

My advice to younger girls is to hold on tight, because it's the fastest ride of your life. Wear the Luverne jersey with pride. Be present with your team. Bond over the wins, and be there for each other even when you lose.

Take a second to look at the crowd, the people who are there to cheer you on at each game - our community. Give back to it when you can, and don't take it for granted.

Congratulations on a great season!

COACHES • PLAYERS



Luverne Cardinals





Let the **Papik team** take care of all of your automotive needs.
We make it easy!



507-283-9171 712-472-2595 WWW.PAPIK.COM



Congratulations Mallory and your Cardinal Teammates!

NELSON FARMS

1289 200th Ave, Magnolia, MN

Congratulations Cardinals!



Section 3A Champions State Tournament Qualifiers



Team members pictured are (front, from left) manager Hadley Vanderburg, Kassidy Saarloos, Izzy Steensma, Tenley Behr, Kamryn Van Batavia, Mallory Von Tersch, Mallory Nelson, Anika Boll, Ellie Van Batavia, Macie Edstrom, Emma Saarloos, (second row) Greta McClure, Ella Apel, Payton Behr, Paula Martinez, Hannah Woodley, Zariah Holmgren, Rylee Kurtz, Marlee Nelson, manager Kenedee Franken, (back row) assistant coach Ellen Wenninger, assistant coach Skyler Wenninger, coach Tony Sandbulte and assistant coach Matt McClure.

**We're proud to support
Luverne High School activities and
be a part of this winning community!**



205 E. Warren Street, Luverne, MN  507-283-4429 sunshinefoodstores.com