

Milwaukee

Save \$70

AS SEEN ON TV

**229<sup>99</sup>**

**M18™ Cordless Grease Gun Kit**  
2-Speed; 10,000 PSI max  
2646-21CT 3499-2405



**DEWALT**

**100<sup>00</sup> OFF**  
REG. PRICE

**Cordless Trimmer & Blower Combo Kit**  
20V MAX™, 4.0AH Li-Ion  
DCK0215M1 3294-3101



AS SEEN ON TV



**22<sup>99</sup>**

PURINA

**Start & Grow® Chick Feed**  
50 lbs. Non-medicated  
3004800-306 0052-5199



**16<sup>99</sup>**

**Fancy Annual Hanging Baskets**

2966-0018, 0019, 1841, 6073, 6082, 7196, 7281, 7352, 7261

## SHOW YOUR YARD SOME LOVE



**9<sup>99</sup>**

**One Gallon Spruce Trees**

2205-4754, 4853, 5009 Stocked in select locations.



**11<sup>99</sup>**

**Weed & Feed**

24-0-4; 5,000 sq. ft. 720-2013 567-0204;  
720-2016 567-0210; 5031-0428 Brands may vary.  
15,000 sq. ft. 720-2014 567-0238

**29<sup>99</sup>**



**24<sup>99</sup>**

**Smart Patch Grass Seed**

Sun & Shade, 10 lbs.  
100545664 0672-0620

**17<sup>99</sup>**

**WeatherFLEX® Hose**

5/8" x 50'  
CSNWF58050 0388-5000



**37<sup>99</sup>**

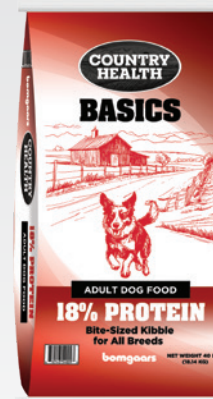
**Lawn & Garden Batteries**

250 CCA, U1-B 6880-0054  
350 CCA, U1-A, U1R-A 6880-0062, 0070



**41<sup>99</sup>**

*Bomgaars Exclusives*



**15<sup>99</sup>**

COUNTRY HEALTH

**Country Health 18% Protein Dog Food**  
40 lbs.

26780400 0863-5050

**bomgaars REWARDS**  
MEMBERS-ONLY PRICES & PERKS

*Start Saving Today!*

SCAN THE CODE TO GET STARTED



NatureWise

MEMBER PRICE

**11<sup>99</sup>**

**NatureWise® Scratch Grains**  
40 lbs.

91598-40 0052-4126



**DEWALT**

MEMBER PRICE

**80<sup>00</sup> OFF**  
REG. PRICE

**DeWALT® Bluetooth Cordless Jobsite Radio**  
12V/20V MAX™  
DCR028B 6298-9813



Kinco

MEMBER PRICE

**12<sup>99</sup>**

**KincoPRO™ Premium Grain Goatskin & Synthetic Hybrid Glove**  
Small or Medium  
103W 0536-7506/7507



**15% OFF**  
REG. PRICE

**Candy & Snack Tubs**  
460-7500/7599



**44<sup>99</sup>**

**Precision Drop Spreader**  
75 lb. capacity, 19" spread pattern  
DS4500RDGY 0619-0130 **Stocked in select locations.** Available to all.



**49<sup>99</sup>**

**Turf Builder® EdgeGuard® Mini Broadcast Spreader**  
Holds up to 5,000 sq. ft. of product  
S176121 0889-0305



**89<sup>99</sup>**

**Agri-Fab Broadcast Spreader**  
85 lb. capacity; 10' spread width  
45-0388-KD 0619-2060



**199<sup>99</sup>**

**Agri-Fab Spreader**  
130 lb. capacity, 10-12' spread width  
45-0463 0260-0577



**229<sup>99</sup>**

**Commercial Tow-Behind Broadcast Spreader**  
200 lb. capacity, 10-12' spread width  
TBST019 0260-0700 **Stocked in select locations.**  
Available to all.

**BIOADVANCED**  
SERVICE-BASED SOLUTIONS



**24<sup>99</sup>**

**Weed & Grass Killer**  
32 oz. Concentrate  
704195A 0411-0400

RTU 24 oz.  
704197A 0411-0401 ..... **6<sup>99</sup>**

RTU Gallon  
704198A 0411-0402 ..... **14<sup>99</sup>**



**19<sup>99</sup>**

**Brush Killer Plus**  
32 oz. Concentrate  
BY704640B 0411-0681

RTU Gallon  
BY704655A 0411-0706 ..... **15<sup>99</sup>**

**4<sup>99</sup>**

**Lawn Weed & Crabgrass Killer**  
24 oz. RTU  
BY704125A 0411-0607



## MAKE YOUR LAWN LOOK GREAT



**21<sup>99</sup>**

**Lifeyme Grass Seed**  
5 lbs., Assorted Mixes  
0677-0011, 0032/0040

25 lb. Sun & Shade Mix  
LTM SS25 0677-0029 ..... **89<sup>99</sup>**



**19<sup>99</sup>**

**1-0-0 Mineral Supplement**  
15 lbs.  
100544883 3409-0150



**8<sup>99</sup>**

**All Purpose Fertilizer**  
20 lbs., 10-10-10  
720-1180 0567-0056

12-12-12 Fertilizer  
720-2190 0567-0068; 5031-0426 ... **19<sup>99</sup>**



**9<sup>99</sup>**

**True Organic Plant Foods**  
4 lbs.  
0890-7000/7006

**69¢**

**Bulk Jobe's Fertilizer Spikes**

890-0707/0765



**17<sup>99</sup>**

**Annual® Grub Beater® Granules**  
6 lbs.  
603 0506-0554



**9<sup>99</sup>**

**Insect Killer Lawn Granules**  
10 lbs.  
100547217 3419-0504

## KEEP THE PESTS AWAY



**6<sup>99</sup>**

**Insect Killer Dust**  
1 lb.  
100550409 3419-0108  
3 lbs.  
100550432 3419-0110 ..... **16<sup>99</sup>**



**14<sup>99</sup>**

**Repels-All Animal Repellent Granules**  
3 lbs.  
23614 0506-0926  
RTU, 32 oz.  
2386 0506-0942 ..... **9<sup>99</sup>**



**14<sup>99</sup>**

**Snake Stopper Repellent**  
4 lbs., Granules  
8754 0506-2154



**89<sup>99</sup>** 

**6 cu. ft. Wheelbarrow**  
Steel Handles, Poly Tray  
33412 0045-5677

## STEP UP YOUR GARDEN GAME

*Your choice!*  
**3<sup>99</sup>**

**Landscaper's Select Garden Tools**

0319-5203/5206; 5053-1516/1520 Brands may vary.



**18<sup>99</sup>**

**Fiberglass Handle Shovels**

BDRPS205MS 0059-0013;  
BDTS205MS 0059-0043



**12<sup>99</sup>**

**Fiberglass Handle Garden Hoes**

BDST216MS 0059-0230; BDST227MS 0059-0233



## Watering Essentials

**5<sup>99</sup>**

**Plastic Nozzle**  
9-Pattern

GN434513L 0392-0594



**9<sup>99</sup>**

**Oscillating Sprinkler**  
Covers up to 4,069 sq. ft.

YM17022-003U 0392-1045



**9<sup>99</sup>**

**Brass "Y" Connector**  
With shut-off valves

GB9105A3L 0392-0502



**16<sup>99</sup>**

**Watering Wand**  
36 in., Brass

GW54511/36 0392-1120



**17<sup>99</sup>**

**Oscillating Sprinkler**  
Covers up to 2,400 sq. ft.

GO123-1 0392-1005



**15<sup>99</sup>**

**Soaker Hose**  
1/2" x 50'

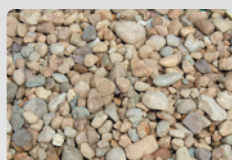
P174-161102 0388-6020



**13<sup>99</sup>**

**Sprinkler & Soaker Hose**  
1/2" x 50'

CELTECV050 0388-5045



**15% OFF**  
REG. PRICE

**Bagged Landscaping Rock**

3315-5004/5187

**3<sup>49</sup>**

**Landscaping Mulch**

2 cu. ft. Red, Brown or Black

3408-0507/0531, 1200/1202 Brands may vary.

**5<sup>49</sup>**

**100% Cypress Mulch**

2 cu. ft.

CYPRESS 3408-0250



**14<sup>99</sup>**

**Miracle-Gro® Potting Soil**  
2 cu. ft.

MR75652300 3403-0346



**2<sup>49</sup> Your choice!**

**Top Soil**

3412-3025; 3415-0409, 4000



**15% OFF**  
REG. PRICE

**Black Gold® Potting Mixes**  
8 qt.

3455-0021, 0104, 0211, 0302, 0328, 0344, 0386, 0427

## Save on **Harvest King** Sprayers



**12<sup>99</sup>**

**Hand Sprayer**  
48 oz.

HK-1001M 0647-0265

**19<sup>99</sup>**

**Pump Sprayer**  
One Gallon

HK-26018M 0647-0918



**69<sup>99</sup>**

**Backpack Sprayer**

4 Gallons

HK-61805M 0647-0041



**49<sup>99</sup> Your choice!**

**Flexzilla Swivel Grip Hose**  
5/8" x 50'; Green, Brown or Clay

0383-0041, 0090/0091



**3499<sup>99</sup>** EDLP Husqvarna

**Husqvarna® ZTR Mower**  
54" cutting deck, 23 HP Kawasaki Engine  
967954006 0522-0090



Save \$200

**3399<sup>99</sup>** Cub Cadet

**Cub Cadet® ZTR Mower**  
54" cutting deck; 24 HP Kohler 7000 Series V-Twin OHV Engine  
17RREACM010 0418-0007

**FINANCING**  
*-available-*

See an associate for details.



**4199<sup>99</sup>** EDLP



**Bad Boy® MZ Magnum ZTR Mower**  
54" cutting deck; 25 HP Kohler 7000 Series V-Twin OHV Engine  
BMZ54KT740 0479-5007

**BOMGAARS** **REBATE**

**20" Push Lawn Mower**

125cc Engine  
11A-02BT729 0414-0109  
While supplies last.



**SALE** \$239<sup>99</sup> EACH  
**MAIL-IN REBATE** -\$40<sup>00</sup>

**FINAL COST** \$199<sup>99</sup>

LIMIT FOUR REBATES PER HOUSEHOLD.

\*Rebate in form of a Bomgaars In-Store Merchandise Coupon.

**EXPIRES 05/06/24**

**SENIX**

**249<sup>99</sup>**

**Senix 15" Mini Cultivator**  
4-Cycle  
TL4QL-L1  
0342-4011



**CHAMPION**

**699<sup>99</sup>**

**Champion 19" Rear Tine Tiller**  
212cc Engine  
100380  
0459-0700



**ECHO**

**229<sup>99</sup>** EDLP

**Straight Shaft Trimmer**  
21.2cc, 2-Stroke Engine  
SRM-225 541-0337  
Stocked in select locations.  
Available to all.



**Earthquake**

**599<sup>99</sup>**

**Victory™ 16" Rear Tine Tiller**  
209cc Viper Engine  
39381 0346-2050



Power equipment brands & availability may vary by location. All shown are available by request.

**TAKE A SEAT**



**19<sup>99</sup>**

**Adirondack Chairs**  
Assorted colors  
3303-0001, 0003, 0006/0007



*Your choice!*

**29<sup>99</sup>**

**Premium Patriotic Chair**  
American Flag or Camo Flag  
PQACH-006-FLG 3293-6002, 6010



**149<sup>99</sup>**

**Double Glider**  
CAM/TT-2 0467-1000



**49<sup>99</sup>**

**Anti-Gravity Chairs**  
25", Blue or Red  
909029, 909027 0371-0638/0639



**74<sup>99</sup>**

**HighView Director's Chair**  
DRCH-011-BKG-BSE 3293-6008



**649<sup>99</sup>**

**Sportsman 1100 Pellet Grill**  
Over 1,600 sq. in. cooking area  
PB1100SPW 646-0166



**529<sup>99</sup>**

**Sportsman Pellet Grill**  
820 sq. in. cooking area  
PB820SP 646-0164



**529<sup>99</sup>**

**Ultimate Lift-Off 4-Burner Gas Griddle**  
647 sq. in. cooking area, Lift-off cooking top  
PB4BGD2 0646-0170



**399<sup>99</sup>**

**Deluxe 4-Burner Gas Griddle with Folding Side Shelves**  
753 sq. in. cooking area  
10963 0646-0168



**Char-Broil**

**149<sup>99</sup>**

**Char-Broil® Barrel Charcoal Grill**  
840 sq. in. grilling space  
23307840 0645-0495



**9<sup>99</sup>**

**Royal Oak Briquets**  
14 lbs.  
800002199 0891-0012



**14<sup>99</sup>**

**Pit Boss Grilling Pellets**  
40 lbs. Assorted flavors  
0646-1000/1002



**8<sup>99</sup>**

**Lumber Jack Grilling Pellets**  
20 lbs. Assorted flavors  
0654-0018/0208



**20% OFF**  
REG. PRICE

**B&B Chips, Chunks & Charcoal**  
0891-0001/0004, 0013/0021



*Your choice!*

**20000 OFF**  
REG. PRICE

**27 Ton Log Splitter**  
208cc; FNA or Briggs & Stratton Engine  
BDFNA27T 0459-0007; BDBS27T 0459-0008

Models may vary by location. Stocked in select locations. Available to all.



**5000 OFF**  
REG. PRICE

**DeWALT® Ultra Quiet Inverter/Generator**  
2200W; CO-Protect Technology  
DXGNI2200 0529-1040



*Your choice!*

**5000 OFF**  
REG. PRICE

**Troy-Bilt 18" or 20" Bar Length Chainsaw**  
42cc or 46cc  
41AY4218766, 41BY46CS766 0342-2020, 2040  
While supplies last.

**TROY-BILT**



**124<sup>99</sup>**

**AR Blue Clean® Electric Pressure Washer**  
1600 PSI, 1.7 GPM  
BC111HS-X 0525-1203



**BOMGAARS** **REBATE**

**CHAMPION**  
POWER EQUIPMENT

**Gas-Powered Pressure Washer**  
2800 PSI, 2.1 GPM  
100778 0538-7080

While supplies last.



**SALE**  
MAIL-IN  
REBATE

**\$399<sup>99</sup>**  
EACH  
**-\$50<sup>00</sup>**

**FINAL COST \$349<sup>99</sup>**

LIMIT FOUR REBATES PER HOUSEHOLD.

\*Rebate in form of a Bomgaars In-Store Merchandise Coupon.

**EXPIRES 05/06/24**

# ENJOY THE GREAT OUTDOORS



**15% OFF**  
REG. PRICE  
All In-Stock  
Open Water Rods and  
Rod & Reel Combos  
Dept. 660-46-06, 09



**15% OFF**  
REG. PRICE  
All Kayaks  
Dept. 660-45-1

Great price!



**3<sup>99</sup>**  
Blazer 22LR Ammo  
50 count, 40 grain  
21 3100-0095

**49<sup>99</sup>**  
0° Sleeping Bag  
Traditional Flannel  
BAG-005-BSE 0799-4804



**24<sup>99</sup>**  
3-Person Dome Tent  
TNT-001-BSE 0799-4820



Your  
choice!  
**9<sup>99</sup>**

LED A19 Bulbs  
Soft White or Daylight, 10-Pack,  
60W equivalent  
A19-10PK3, A19-10PK5 3703-0072, 0078



**19<sup>99</sup>**

4' LED Shop Light  
EL-SHP7500LM 3703-0010; EL-5500LM 3703-9902  
Selection may vary by location.



**10% OFF**  
REG. PRICE  
All Koch® Rope  
Dept. 300-08-02

**Koch**  
INDUSTRIES INC

## EARLY SEASON CANNING SALE

Shop early for the best selection of the season!



**15% OFF**  
REG. PRICE  
Canning Supplies  
Dept. 660-45-1; 5021-0112/0120  
Brands may vary by location.



**3/\$6**  
Giants Sunflower  
Seeds  
Assorted Flavors,  
5-5.75 oz.  
0480-0001/0009



**4<sup>99</sup>**  
KrackCorn®  
11 oz. or 8.5 oz.  
Cheese  
0633-3001/3002



Stock up  
& save!

**2/\$15**  
Wiley Wallaby  
Licorice  
Family Size, 24 oz.  
0662-2725/2737



**10<sup>99</sup>**  
Cattleman's Cut  
Smoked Meat Sticks  
12 oz., Assorted Flavors  
0665-5196/5198



**2<sup>99</sup>**  
Bing Bites  
5 oz.  
15307 2810-1055

**3<sup>99</sup>**  
Concrete Mix  
60 lbs.  
100171 0638-0042





**21<sup>99</sup>**

**Ariat® Rebar Men's Short-Sleeve Pocket T-Shirts**

Sizes M-2XL  
4031-2085/2118, 2150/2184, 2225/2259

Big & Tall

4031-2126/2142, 2192/2218, 2267/2283.....

**24<sup>99</sup>**



**20% OFF**  
REG. PRICE

**All In-Stock Ariat® Men's Durastretch Work Pants**

4031-0200/0261, 0371/0389, 1200/1259



**18% OFF**  
REG. PRICE

**All In-Stock Ariat® Women's Jeans**

431-11-00



**31<sup>99</sup>**

**KEY® Men's Highback Overall**

Sizes 30-46

273.41 0165-5374/5614, 5896/6133

Sizes 48-60

0165-5630/5749, 6141.....

**34<sup>99</sup>**



UNDER ARMOUR

**20% OFF**  
REG. PRICE

**All In-Stock Under Armour® Apparel**

Dept. 430; 450-35-00



**17<sup>99</sup>**

**Wrangler® Men's Blue Ridge Jeans**

Sizes 30-42

35BRCAS, 35BRCSW  
0916-9013/9328, 9500/9774

Sizes 44-48

0916-9336/9419,

9782/9865.....

**20<sup>99</sup>**



**39<sup>99</sup>**

**KEY® Men's Unlined Coverall**

Sizes S-4XL, Short, Tall or Regular

995 168-1205/1560, 3491/3631



**2<sup>99</sup>**



**Women's Garden Gloves**

Small or Medium, Nitrile Palm

1891W 0536-2207/2215



## FIND YOUR FAVORITE FOOTWEAR HERE



**15<sup>99</sup>**

**C.W. HART**

**Boot & Shoe Scrubber**

CWH-BS1 6212-2100



**5<sup>99</sup>**

**All Purpose Boot Tray**

29" x 15"

CWH-BT1 6212-2000



**29<sup>99</sup>** **SERVUS**  
by Honeywell

**15" PVC Rubber Boot**

Sizes 5-13

18801 0571-9028/9101



**20% OFF**  
REG. PRICE

**All In-Stock Aerosoft Sandals**

4902-0200/0205, 0254/0259, 0360/0393



**20% OFF**  
REG. PRICE

**All In-Stock Skechers® Footwear**

4911-0003/0097, 0720/0761, 1350/1359, 1380/1439, 2011/2054,  
3600/3612, 3700/3732, 3922/3927, 3930/3943, 4008/4014,  
4100/4130, 4178/4207, 4224/4233, 4390/4479



ARIAT

**189<sup>99</sup>**

**Ariat® Men's WorkHog Work Boot**

Sizes 7-14, Medium & Wide

Widths

10005888 4900-6671/6861



**94<sup>99</sup>**

**DeWALT® Men's Flex Moc Work Boot**

Sizes 7-14M

DXWP10034 4904-0700/0711





**5.00 OFF**  
REG. PRICE

**Wildology**  
SUPER NUTRITION FOR HAPPY PETS

**Wildology Dog & Puppy Food**

28 - 30 lbs.  
0853-8403, 8410/8424



**6.00 OFF**  
REG. PRICE



**Blue Wilderness Dog & Puppy Food**

28 lbs. & larger  
0853-3822, 4028, 4143, 4210, 4226, 4268, 4309, 4333



**3.00 OFF**  
REG. PRICE

**IAMS**

**IAMS Dog & Puppy Food**

29.1 lbs. & larger  
0857-0056, 0534, 0552, 0627/0636, 0680, 0732, 0734, 0780



**4.00 OFF**  
REG. PRICE

**PURINA**  
**PRO PLAN**

**Pro Plan Dog & Puppy Food**

24 lbs. & larger  
0860-3004, 3010, 3015/3103, 3129/3187, 3484, 3600

**HEARTLAND**  
**HARVEST**

**2.00 OFF**  
REG. PRICE

**Heartland Harvest Dog Food**

40 lbs.  
HH001, HH002, HH003  
0852-1001/1003



**29.99**

**Kibbles 'n Bits**

**Original Dog Food**

45 lbs.  
7910051634 0860-6149



**Pet Barn Dog Houses**

Small **59.99**

Medium **74.99**

Large **99.99**

25162 0849-0592 ...  
25163 0849-0576 ...  
25164 0849-0584 ...



*Loyall Life*

**16.99**

**Loyall Life Cat & Kitten Food**

20 lbs.  
136113-20 0852-8020



**16.99**

**Meow Mix Original Cat Food**

16 lbs.  
2927450225 0860-4804



**21.99**

**Cat Cafe Cat Food**

30 lbs.  
14033 0860-6201



**4.99**

**Country Vet Dog Biscuits**

4 lbs.  
0863-1451/1518



**10/\$10**

**Pig-Ear Treats**

PIE-1PCE 860-0001  
Priced Individually.



**15% OFF**  
REG. PRICE

**Benebone Dog Chew Toys**

0830-0001/0022



**20% OFF**  
REG. PRICE

**Tuffy's Dog Toys**

0836-9317/9979



**25% OFF**  
REG. PRICE

**Safe-Guard Canine Dewormers**

0648-1931/1933



**20<sup>99</sup>**

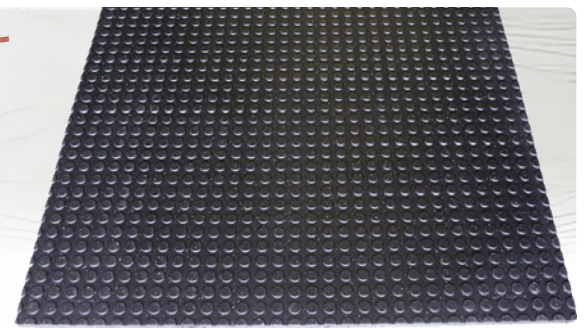
**Hi-Pro Egg Layer Feed**  
50 lbs., 21% Protein  
309000 052-4307



**\$2 OFF**

**Equine Senior Horse Feed**  
50 lbs.  
3006848-506 052-4737

**Strategy Horse Feed Professional Formula**  
50 lbs. For maintenance, growing, breeding and performance horses  
3004620-206 052-4779

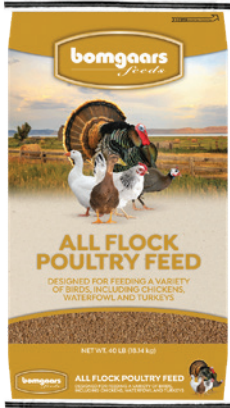


**44<sup>99</sup>**

**6' x 4' Rubber Stall Mat**  
3/4" thick  
1202220 0409-1005

**13<sup>99</sup>**

**All Flock Poultry Feed**  
40 lbs. Crumbles  
80962 0052-4141



**14<sup>49</sup>**

**16% Rabbit Pellets**  
40 lbs.  
80932 052-3812



**15<sup>99</sup>**

**Hog Feed**  
40 lbs.  
80952 052-3903



*Great deals on fencing*



**20% OFF**  
REG. PRICE

**OK BRAND**  
FENCING PRODUCTS

**OK Steel Field Fence, Horse Fence or Sheep & Goat Fence**

Dept. 505-08-00

**19<sup>99</sup>**

**Poultry Pro Feeder Kit**  
Turn any bucket into a poultry feeder!

PPF1 0022-6200 Bucket/container sold separately.



**5<sup>99</sup>**

**Small Flake Pine Shavings**  
4 cu. ft. usable volume  
FINE SHAVINGS 859-1803



*Protect the Herd*

**59<sup>99</sup>**

**Vedco® ProMectin® B Pour-On for Cattle**  
5 Liter. See label for uses

VINV-PROM-1806 003-8267 Applicator sold separately. Brands may vary.



**10% OFF**  
REG. PRICE

**In-Stock T-Post**

040-3105/3164, 3600/3626, 3700/3706, 3800/3802



## TACKLE TOUGH JOBS



**649<sup>99</sup>**  
**6' Landscape Rake**  
CAT I 3-point hitch  
TYR-72-YK 5481-5061

**15<sup>99</sup>**

**RM18 Fast-Acting Weed & Grass Killer**  
Quart

75435 0412-4309

**One Gallon**

75436 0412-4310

**2.5 Gallons**

75437 0412-4315

**44<sup>99</sup>**

**84<sup>99</sup>**



**14<sup>99</sup>**

**Amine 400 2, 4-D Weed Killer**  
Quart

8141082 0412-0094

**One Gallon**

8141072 0412-0119

**2.5 Gallons**

8141122 0412-0169

One & 2.5 Gallons not available for sale in AR or TX.



**249<sup>99</sup>**

**15 Gallon Trailer Sprayer**  
1.2 GPM, 2-Nozzle Boom

5303198 5398-0001



# HOT DEALS TO HIT THE ROAD

**20% OFF**  
REG. PRICE

Select Truck Tool Boxes  
DeeZee, Bomgaars by DeeZee or Better Built  
0834-6092/7553, 7602/7611, 7751/9202 Brands vary by location.



**15% OFF**  
REG. PRICE

Car Care/Cleaning Accessories  
0358-Code; 5042-0238/0245  
Selection varies by location.

**10<sup>99</sup>**  
6-Pack Shop Towels

5441601 0109-0026



**16<sup>30</sup>**

BlueDEF™  
2.5 Gallons  
DEF002 0438-9715



Harvest King Automotive Chemicals  
Non-Chlorinated Brake Cleaner or  
Engine Degreaser

0098-1006, 1110 ..... **2<sup>99</sup>**  
Brake Parts Cleaner, Silicone Spray,  
Penetrating Lubricant or Grease Spray  
0098-1010/1098 ..... **3<sup>99</sup>**  
Motor Treatment  
0098-1101 ..... **4<sup>99</sup>**

**20% OFF**  
REG. PRICE

Windshield Wiper Blades

0035-Code; 5042-1325/1341  
Selection varies by location.



Mystik Grease

JT-6 #2 Grease  
0010-0022 ..... **3<sup>49</sup>**  
Hi-Temp  
0010-0024 ..... **4<sup>49</sup>**  
3% Moly  
0010-0026 ..... **5<sup>29</sup>**  
Synthetic Blend  
0010-0028 ..... **5<sup>49</sup>**  
Marine  
0010-0032 ..... **5<sup>49</sup>**



**15% OFF**  
REG. PRICE

Replacement Tires & Inner Tubes  
5012-, 5013- & 5015-Code



**15% OFF**  
REG. PRICE

Powersport Batteries  
6880-0161/1466

**94<sup>99</sup>**

4' Hi-Lift Jack  
HL-484 0287-4859



**239<sup>99</sup>**

EZ Max Mower Lift  
24" height  
45001 0226-8404



**21<sup>99</sup>**

Utility Jug  
5 Gallons  
5UJ-3953 0511-0953



**22<sup>99</sup>**

Utility Jug  
5 Gallons; Red, Yellow or Blue  
0511-0979/0999



## MANUFACTURER REBATE

Valvoline® Daily  
Protection Motor Oil  
5 Quarts; 5W20, 5W30 or 10W30  
0143-0115/0131

Valvoline



SALE **\$24<sup>99</sup>** EACH  
MAIL-IN REBATE **-\$5<sup>00</sup>**

FINAL COST **\$19<sup>99</sup>**

Quart; 5W20, 5W30 or 10W30  
0143-0032/0058 ..... **5<sup>99</sup>**

REBATE LIMITS APPLY - SEE STORE FOR DETAILS

## MANUFACTURER REBATE

Rotella T4 Engine Oil  
5 Gallons, 15W40  
550045128 0087-2318



SALE **\$74<sup>99</sup>** EACH  
MAIL-IN REBATE **-\$20<sup>00</sup>**

FINAL COST **\$54<sup>99</sup>**

Gallon, 15W40  
550045126 0087-2277 ..... **17<sup>99</sup>**

REBATE LIMITS APPLY - SEE STORE FOR DETAILS



**15% OFF**  
REG. PRICE

Oil & Fuel Filters  
0405- & 0406-Code; 5042-0424/0506  
Brands vary by location.

## BOMGAARS REBATE



Fill-Rite®  
Fuel Transfer  
Pump

Up to 15 GPM  
FR1210HA1 5033-8032

SALE **\$510<sup>99</sup>** EACH  
MAIL-IN REBATE **-\$50<sup>00</sup>**

FINAL COST **\$460<sup>99</sup>**

LIMIT ONE REBATE PER HOUSEHOLD.

\*Rebate in form of a Bomgaars In-Store Merchandise Coupon.

EXPIRES 05/06/24



**DEWALT**

Select 20V MAX™ Bare Power Tools  
6298-List

**10<sup>00</sup> OFF**  
REG. PRICE

Does Not Include Bare Outdoor Power Equipment, Handheld Lights/Flashlights, Cordless Nailers/Staplers, Sprayers, Air Compressors or Discontinued Bare Power Tools.

**bomgaars COUPON**

**BUY ONE**  
Select 20V MAX™ Bare Power Tool  
6298-6016, 8005/8020, 8039/8047, 8055/8068, 8089, 8097/8101, 8130, 8139/8153, 8180, 8196, 8211/8212, 8229, 8261/8327, 8401/8525, 8609/8658, 8707/8947 (left)

**GET ONE**  
20V MAX™ 5.0AH Li-Ion Battery DCB205 6298-9466

**& GET ONE**  
20V MAX™ Battery Charger  
DCB115/DCB1104 6298-9705

EXPIRES 05/06/24  
No retail value. See store associate for actual coupon.

20V  
BRUSHLESS  
WITH  
FLEXVOLT  
ADVANTAGE



**100<sup>00</sup> OFF**  
REG. PRICE

Hammer Drill/Impact Driver Combo Kit 20V MAX™ XR, 5.0AH Li-Ion DCK2100P2 6298-2075

**bomgaars COUPON**

**BUY ONE**  
20V MAX™ Hammer Drill/Impact Driver Combo Kit DCK2100P2 6298-2075 (left)

**GET ONE** of the following Bare Tools or Battery:  
or Recip Saw  
DCS380B 6298-8020  
or Oscillating Multi-Tool  
DCS356B 6298-8097  
or 4-1/2" Cut-Off Grinder  
DCG412B 6298-8012  
or 5.0AH Battery  
DCB205 6298-9466



EXPIRES 05/06/24

No retail value. See store associate for actual coupon.

**10<sup>00</sup> OFF**  
REG. PRICE

12" Compound Miter Saw Sliding Double-Bevel, 15.0 AMP, 3,800 RPM DWS780 6294-7026



**bomgaars COUPON**

**BUY ONE**  
12" Compound Miter Saw DWS780 6294-7026 (left)

**GET ONE**  
Heavy Duty Miter Saw Stand DWX723 6294-7068

EXPIRES 05/06/24  
No retail value. See store associate for actual coupon.

**50<sup>00</sup> OFF**  
REG. PRICE

12" Compound Miter Saw Single-Bevel 15 AMP DWS715 6294-7035



**30<sup>00</sup> OFF**  
REG. PRICE

10" Compound Miter Saw DWS713 6294-6979



Buy a DEWALT® Bucket for **4<sup>99</sup>** 6295-0001

and get **20% OFF** REG. PRICE

on DEWALT® Accessories, Abrasives, Hand Tools & Mechanics Tools\*

6291, 6293, 6295, 6297, 6299, 6300-Codes,

Regularly Priced Items Only. Excludes Discontinued Items & Plastic Storage.

**DEWALT**



Your choice!

**100<sup>00</sup> OFF**  
REG. PRICE

8-1/4" Compact Jobsite Table Saw w/ Site-Pro Guarding System; 15 Amp DWE7485 6294-7261

10" Job Site Table Saw w/32-1/2" Rip Capacity & Rolling Stand DWE7491RS 6294-7282

**70<sup>00</sup> OFF**  
REG. PRICE

Compact 2.0AH Li-Ion Battery 20V MAX™ DCB203 6298-9549

Compact POWERSTACK™ Batteries 20V MAX™ Li-Ion, 1- or 2-pack DCBP034 6298-9550, DCBP034-2 6298-9551



**110<sup>00</sup> OFF**  
REG. PRICE

20V MAX™ 5.0AH Li-Ion Battery 1- or 2-Pack DCB205 6298-9466; DCB205-2 6298-9474

20V MAX™ 5.0AH POWERSTACK™ Li-Ion Battery 1- or 2-Pack DCBP520 6298-9554, DCBP520-2 6298-9555



**50<sup>00</sup> OFF**  
REG. PRICE  
Jobsite Bluetooth® Speaker 12V/20V MAX™ DCR010 6298-8950



**40<sup>00</sup> OFF**  
REG. PRICE  
USB-C Bluetooth® Speaker Rechargeable DCR008 6298-8955  
Speaker only; battery & adapter sold separately.



**100<sup>00</sup> OFF**  
REG. PRICE *Your choice!*

**Grease Gun Kit**  
20V MAX™, 4.0AH Li-Ion  
DCG571M1 6298-1909

**High-Torque 1/2" Impact Wrench Kit**  
20V MAX™ XR, 5.0AH Li-Ion  
DCF900P1 6298-1695



**18% OFF**  
REG. PRICE   
**All In-Stock Dickies® Men's Work Jeans**  
Dept. 451-11-00

**6<sup>49</sup>**

**Trail Mix**  
22 oz.  
6655-0372/0421



**21<sup>99</sup>**

**GaaHuu Sandals**  
Sizes 6-11  
60005200, 60007001 4992-1006/1017



**39<sup>99</sup>**

**Vintage Tractor Hydraulic Fluid**  
5 Gallons  
HKS001US 0008-4018



**47<sup>99</sup>**

**Tractor Hydraulic Fluid**  
5 Gallons  
HKS002US 0008-4024



**2/\$4**

**4" Vegetables**  
Chef Jeff's or Midwest Best  
2966-1198, 1643, 1651

**12<sup>99</sup>**

**Trimec Lawn Weed Killer**  
One Quart, Concentrate  
791600 0436-0880

One Gallon, Concentrate **37<sup>99</sup>**  
792000 0436-0947



**11<sup>99</sup>**

**MaxLawn 12-24-6 Starter Fertilizer**  
5,000 sq. ft. coverage  
720-2040 0567-0014; 100206624  
6403-0001 Brands may vary.



**23<sup>99</sup>**

**Roundup® Lawn & Garden Sprayer**  
2 Gallons; 3-Way Adjustable Multi Nozzle System  
190487 0173-0052



**FEED THE BIRDS**

**7<sup>99</sup>**

**Nyjer Thistle Seed**  
4 lbs.  
150030 3320-7256



**13<sup>99</sup>**

**Backyard Blends Wild Bird Mix**  
40 lbs.  
182010 3320-7037



**BOMGAARS  REBATE**

**Running Horse Apple Cinnamon Treats**  
4 lbs.  
P16035 0052-0909

**SALE \$6<sup>99</sup> EACH**  
**MAIL-IN REBATE -\$5<sup>00</sup>**  
**FINAL COST \$1<sup>99</sup>**



LIMIT FOUR REBATE PER HOUSEHOLD.  
\*Rebate in form of a Bomgaars In-Store Merchandise Coupon.  
**EXPIRES 05/06/24**

*Exclusively at Bomgaars*

**bomgaars**  
*feeds*

**11<sup>99</sup>**  
**Basics 12% Sweet Livestock Feed**  
50 lbs.  
33320 0052-3505



**COUNTRY HEALTH**

**13<sup>99</sup>**  
**High Protein Cat Food**  
20 lbs.  
P455 0863-6060



**bomgaars**  
bomgaars.com  

 **JOHN DEERE FINANCIAL**



Product availability subject to manufacturer's ability to deliver merchandise by ad dates. We reserve the right to post price changes, limit quantities and correct print errors. Some items not available in all stores. Merchandise may vary from illustration. No discounts on previous purchases, gift cards, or special orders. All prices subject to stock on hand. Bomgaars Rebate merchandise coupons are one-time use and are not valid towards purchases made on Bomgaars.com. Please allow 6-8 weeks for processing.



# energy they need, flavor they love

**bomgaars**  
Prices Valid April 30 - May 6, 2024

## ADULT DOG FOOD MEGA PACKS 96<sup>99</sup> EDLP



**Adult Ages 1-6,  
Chicken & Barley,  
45 lbs.** 605516 858-0203



**Adult Small Bite  
Ages 1-6, Chicken &  
Barley, 45 lbs.**  
605515 858-0279



**Large Breed Ages 1-5,  
Chicken & Barley,  
45 lbs.** 605517 858-0386



**Sensitive Stomach  
& Skin Chicken, 36 lbs.**  
605718 858-0857



**200 OFF  
REG. PRICE**  
**Small Paws™ Dog Food**  
Puppy, Adult 1-6, Adult 7+,  
Adult 11+, Light, 4.5 lbs.  
9094, 9096, 9098, 2533, 9100,  
2896 858-1309, 1325, 1341/1383

**BIG ON  
LOVE,  
SMALL IN  
SIZE**

**55<sup>99</sup>**  
**Small Paws™ Adult  
Dog Food**  
15.5 lbs.  
9097 858-1333



**78<sup>99</sup>**  
**Adult Dog Food  
Large Breed, 35 lbs.**  
11003 858-0385



**46<sup>99</sup>**  
**Adult Dog Food**  
15 lbs. 603796 858-0210

35 lbs. 11000 858-0202 ..... **78<sup>99</sup>**



**19<sup>99</sup>**  
**Adult Dog Food  
Small Bites, 5 lbs.**  
8183 858-0252

15 lbs. 603798

858-0260 ..... **46<sup>99</sup>**

35 lbs. 10998

858-0278 ..... **78<sup>99</sup>**



**18<sup>99</sup>**  
**Puppy Food  
Small Bites, 4.5 lbs.**  
7139 858-0012

12.5 lbs. 607793 858-0038 ..... **38<sup>99</sup>**



**72<sup>99</sup>**  
**Puppy Food**  
27.5 lbs. 607792  
858-0161



**72<sup>99</sup>**  
**Puppy Food  
Large Breed, 27.5 lbs.**  
607794 858-0103



# science led. farm fed.



**19<sup>99</sup>**  
**Adult 7+ Dog Food**  
**Small Bites, 5 lbs.**  
 8159 858-0393  
 15 lbs. 603799  
 858-0377 ..... **46<sup>99</sup>**



**46<sup>99</sup>**  
**Adult 7+ Dog Food**  
 15 lbs. 603797 858-0591  
**6+ Large Breed,**  
**33 lbs. 2044**  
 858-0153 ..... **78<sup>99</sup>**



**46<sup>99</sup>**  
**Adult Dog Food**  
**Light, 15 lbs.** 603933 858-0476  
 30 lbs. 603938,  
 603940 858-0468, 0137 ..... **78<sup>99</sup>**



**19<sup>99</sup>**  
**Adult Dog Food**  
**Small Bites, 4.5 lbs.**  
 8555 858-0749  
 33 lbs. 2036, 2037  
 858-0773, 1028 ..... **81<sup>99</sup>**



**19<sup>99</sup>**  
**Adult Dog Food**  
**Light, Small Bites 5 lbs.**  
 9301 858-0400  
 15 lbs. 603931  
 858-0418 ..... **46<sup>99</sup>**  
 30 lbs. 603939  
 858-0426 ..... **78<sup>99</sup>**



**22<sup>49</sup>**  
**Adult Dog Food**  
**Oral Care, 4 lbs.**  
 9281 858-1002



**24<sup>49</sup>**  
**Adult 7+ Dog Food**  
**Youthful Vitality, Regular or**  
**Small & Mini Breed, 3.5 lbs.**  
 10770, 10772 858-1705, 1713  
 12.5 lbs. 10771, 10773  
 858-1755, 1763 ..... **57<sup>99</sup>**  
 21.5 lbs. 10774  
 858-1797 ..... **83<sup>99</sup>**



**24<sup>49</sup>**  
**Adult Dog Food**  
**Perfect Digestion, 3.5 lbs.**  
 605508 858-5400  
 12 lbs. 605509  
 858-5401 ..... **57<sup>99</sup>**  
 22 lbs. 605510  
 858-5402 ..... **83<sup>99</sup>**



**22<sup>49</sup>**  
**Adult Dog Food**  
**Perfect Weight,**  
**Small & Mini Breed,**  
**4 lbs.** 3821 858-1135  
 12.5 lbs. 607828  
 858-1151 ..... **57<sup>99</sup>**



**24<sup>49</sup>**  
**Adult Dog Food**  
**Perfect Weight, 4 lbs.**  
 2972, 605047 858-1127, 1138  
 12 lbs. 607826, 607829  
 858-1143, 1154 ..... **57<sup>99</sup>**  
 25 lbs. 607827,  
 607830, 607831  
 858-1169, 1172, 1174 ..... **85<sup>99</sup>**



**22<sup>99</sup>**  
**Adult Dog Food**  
**Sensitive Stomach & Skin,**  
**Small & Mini Breed,**  
**4 lbs.** 10439 858-0963  
 15 lbs. 10440  
 858-0971 ..... **55<sup>99</sup>**



**22<sup>49</sup>**  
**Adult Dog Food**  
**Sensitive Stomach & Skin, 4 lbs.**  
 10115, 605051 858-0830, 0834  
 15 lbs. 605052, 8860  
 858-0844, 0848 ..... **55<sup>99</sup>**  
**Grain-Free, 24 lbs.**  
 603929 858-0850 ..... **81<sup>99</sup>**  
 30 lbs. 605053, 8839, 605054  
 858-0854, 0856, 0858 ..... **81<sup>99</sup>**

# life out there starts right here



**10¢ OFF**  
REG. PRICE  
**Canned Dog Food**  
Assorted Flavors, 12.5-13 oz.  
858-List



**100 OFF**  
REG. PRICE  
**Canine Treats**  
Assorted Varieties, 7.1 - 8 oz.  
858-6078/6606



**55<sup>99</sup>**  
**Adult & Puppy Food**  
Adult, Small Bite Senior or  
Puppy, 12.5-15 lbs.  
604930, 604932, 604935, 604938  
858-5002, 5012, 5022, 5036



**81<sup>99</sup>**  
**Adult Dog Food**  
Adult, Large Breed, Adult 6+ or  
Senior 7+, 30 lbs.  
604933, 604936, 604939, 604940 858-5014,  
5030, 5038, 5044

**10¢ OFF**  
REG. PRICE  
**Wet Dog Food**  
Assorted Flavors, 3.5 oz.  
858-1903/1937



**10¢ OFF**  
REG. PRICE  
**Canned Cat Food**  
Assorted Flavors, 5.5 oz.  
858-List



**10¢ OFF**  
REG. PRICE  
**Cat Food Pouches**  
Assorted Flavors, 2.8 oz.  
858-List



**36<sup>49</sup>**  
**Kitten & Adult Cat Food**  
Kitten, Adult, or Senior 7+, 6-7 lbs.  
604952, 604954, 604957  
858-5502, 5512, 5522



**62<sup>99</sup>**  
**Adult Cat Food**  
Adult or Senior 7+, 15 lbs.  
604955, 604958  
858-5514, 5524



**38<sup>49</sup>**  
**Adult Cat Food**  
Perfect Digestion, 6 lbs.  
605512 858-5901



**24<sup>99</sup>**  
**Adult 7+ Cat Food**  
Youthful Vitality,  
3.5 lbs. 605511 858-5900  
6 lbs. 10778  
858-3818..... **37<sup>49</sup>**



# fueling every season of life



**20<sup>99</sup>**  
**Adult Cat Food**  
 4 lbs. 6797 858-2117

7 lbs. 2045 ..... **32<sup>99</sup>**  
 858-2109 .....  
 16 lbs. 10405 ..... **58<sup>99</sup>**  
 858-2084 .....



**20<sup>99</sup>**  
**Adult Cat Food Light, 4 lbs.**  
 6711 858-2266

7 lbs. 2047 ..... **32<sup>99</sup>**  
 858-2258 .....  
 16 lbs. 10406 ..... **58<sup>99</sup>**  
 858-2232 .....



**20<sup>99</sup>**  
**Adult Cat Food Indoor, 3.5 lbs.**  
 5532 858-2315

7 lbs. 8879 ..... **32<sup>99</sup>**  
 858-2231 .....  
 15.5 lbs. 8873 ..... **58<sup>99</sup>**  
 858-2323 .....



**20<sup>99</sup>**  
**Adult 7+ Cat Food Indoor, 3.5 lbs.**  
 6446 858-2274

7 lbs. 8880 ..... **32<sup>99</sup>**  
 858-2282 .....



**20<sup>99</sup>**  
**Adult 7+ Cat Food**  
 4 lbs. 7104 858-2381

16 lbs. 10407 ..... **58<sup>99</sup>**  
 858-2357 .....



**20<sup>99</sup>**  
**Adult 11+ Cat Food**  
 3.5 lbs. 1462 858-2399

7 lbs. 1463 ..... **32<sup>99</sup>**  
 858-2406 .....



**19<sup>99</sup>**  
**Kitten Food**  
 3.5 lbs. 7123, 607768  
 858-2018, 2027

7 lbs. 9391, 607788 ..... **32<sup>99</sup>**  
 858-2000, 2028 .....  
 15.5 lbs. 9392 ..... **58<sup>99</sup>**  
 858-2026 .....



**24<sup>99</sup>**  
**Adult Cat Food Perfect Weight, 3 lbs.**  
 2968 858-3347

7 lbs. 2969 ..... **38<sup>49</sup>**  
 858-3363 .....  
 15.5 lbs. 2970 ..... **64<sup>99</sup>**  
 858-3389 .....



**22<sup>49</sup>**  
**Adult Cat Food Hairball Control, 3.5 lbs.**  
 7156, 7533 858-2505, 2589

7 lbs. 8881, 8882, 8883 ..... **36<sup>49</sup>**  
 858-2513, 2555, 2597 .....  
 15.5 lbs. 8875, 8876, 8877 ..... **62<sup>99</sup>**  
 858-2521, 2563, 2604 .....



**22<sup>49</sup>**  
**Adult Cat Food Sensitive Stomach & Skin, 3.5 lbs.** 8523 858-2737

7 lbs. 8884 ..... **36<sup>49</sup>**  
 858-2745 .....  
**Adult & Grain Free, 13 & 15.5 lbs.** 603928, 8878 858-2750, 2761 ..... **62<sup>99</sup>**



**22<sup>49</sup>**  
**Adult Cat Food Urinary Hairball Control, 3.5 lbs.** 10135 858-2654

7 lbs. 10136 ..... **36<sup>49</sup>**  
 858-2662 .....  
 15.5 lbs. 10137 ..... **62<sup>99</sup>**  
 858-2670 .....



**36<sup>49</sup>**  
**Adult Cat Food Multiple Benefit, 7 lbs.** 3087 858-2828

15.5 lbs. 3088 ..... **62<sup>99</sup>**  
 858-2836 .....